



# 48" Dozer Blade

Model No. 79355 – 8900001 & Up

---

# Parts Catalog

## ORDERING REPLACEMENT PARTS

To order replacement parts, please supply: the part number, the quantity, and the description of each part desired.

## Contents

Description	Page	Description	Page
Frame Assembly .....	1	Toro Part Number Index .....	4
Blade Assembly .....	2	Maintenance .....	5
Mounting Assembly .....	3	<b>Note:</b>	

## Accessories

Description	Model / Parts No.	Description	Model / Parts No.
-------------	-------------------	-------------	-------------------

## Part Description Abbreviations

Part descriptions in this catalog may include the following abbreviations.

Abbreviation	Meaning	Abbreviation	Meaning
AR .....	as required	HWHTF .....	hex washer head thread forming
ASM .....	assembly	INC .....	incorporated
CARR .....	carriage	LH .....	left hand
DEG .....	degrees	PH .....	pan head
FH .....	flat head	PPH .....	Phillips pan head
GA .....	gauge	PTO .....	power take off
HF .....	hex flange	RH .....	right hand
HFW .....	hex flange washer	SFH .....	slotted fillister head
HH .....	hex head	SH .....	square head
HHF .....	hex head flange	SHWH .....	slotted hex washer head
HHST .....	hex head self tapping	SPH .....	slotted pan head
HJ .....	hex jam	STD .....	standard
HOC .....	height-of-cut	TAP .....	self tapping
HS .....	hex socket	TH .....	truss head
HSBH .....	hex socket button head	TTH .....	Torx truss head
HSFH .....	hex socket flat head	WH .....	wing head
HSH .....	hex socket head		
HWH .....	hex washer head		

## Important Format Explanations

This catalog uses special formats to convey information in illustrations and parts lists. Specifically, one format is used in conjunction with service assemblies and another with quantities associated with reference numbers.

### Service Assemblies

Parts within service assemblies have reference numbers in the form X:Y. X is the reference number of the service assembly and Y is a sequential number unique to each part within the service assembly.

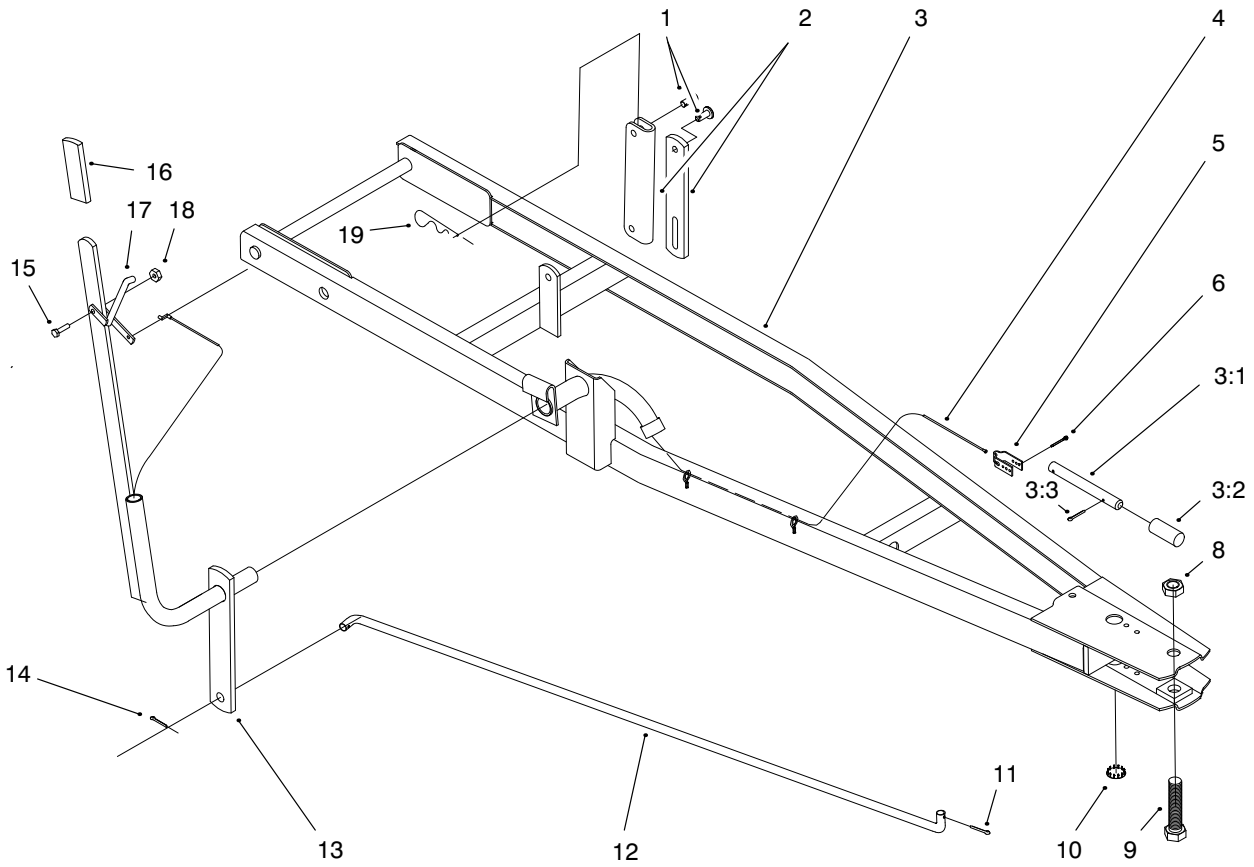
For example, a wheel assembly might be identified by reference number 6, the tire by 6:1, the valve by 6:2, and the wheel by 6:3. When you order the assembly identified by reference number 6, you receive all parts identified by reference numbers 6:1, 6:2, and 6:3. However, you may also order any part individually.

Reference numbers of this type appear in part lists and as callouts in illustrations.

## **Reference Numbers with Quantities**

Illustrations may have a quantity in parentheses next to a reference number, in the form  $X (Y)$ .  $X$  is the reference number.  $Y$  in parentheses is the quantity of the part identified by the reference number.

For example, the illustration callout 4 (2) indicates that two parts are used in that instance.

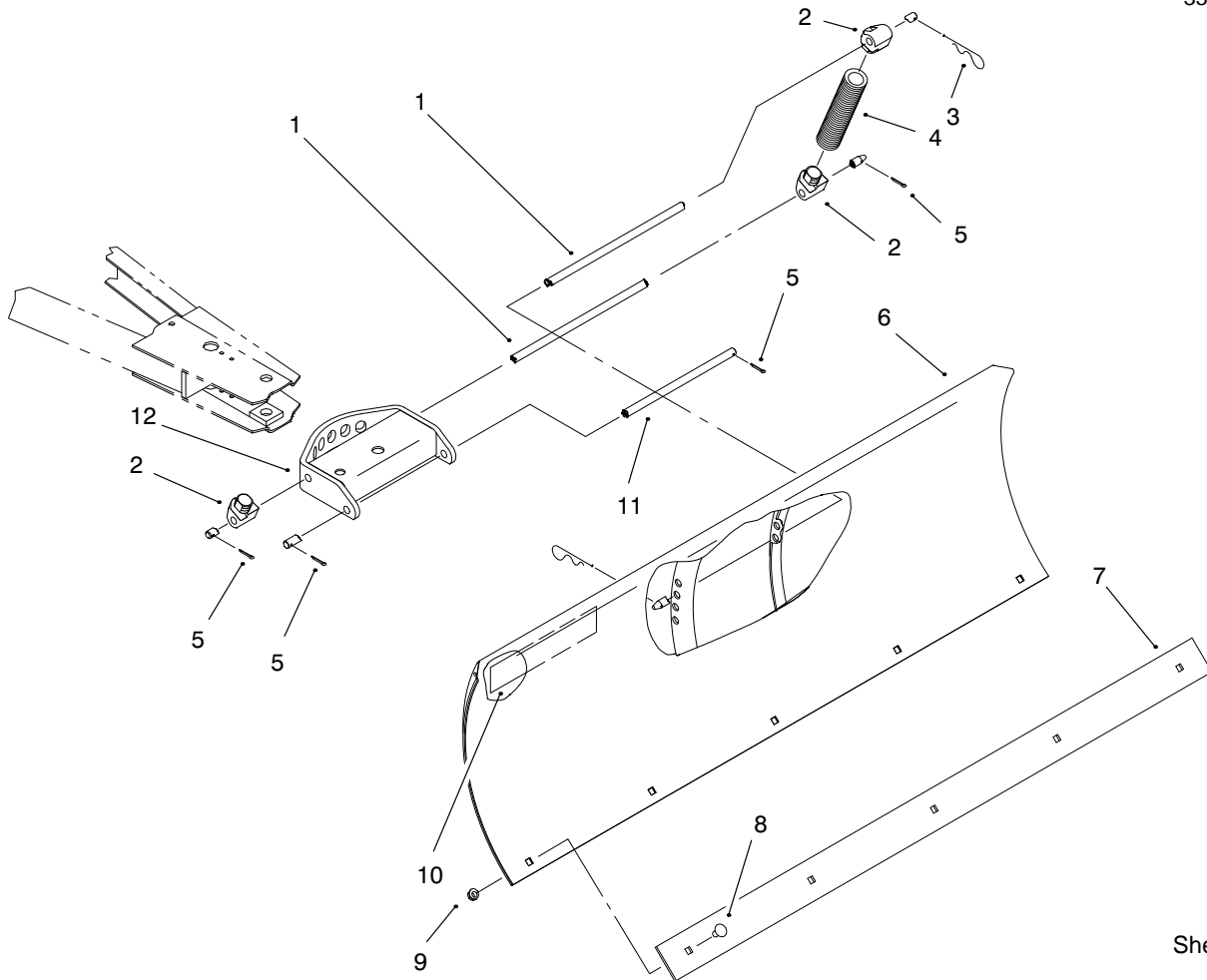


Sheet No.:2

## Frame Assembly

Ref. No.	Part No.	Qty.	Description
1	283-2	2	Pin-Clevis
1	98-5055	2	Pin
2	94-7793-03	1	Link-Lift
2	94-7987-03	1	Link-Lift
3	94-7792-01	1	Frame-ASM
3:1	88-6520	1	Index Pin
3:2	2354	1	Spring-Compression
3:3	3272-11	1	Pin-Cotter
4	94-7788	1	Cable-Indexing
5	94-7782	1	Bracket-Cable
6	3272-12	1	Pin-Cotter
8	3296-15	1	Nut-Hex Lock
9	3216-7	1	Screw-HH
10	4944	2	Plug
11	3272-11	1	Pin-Cotter
12	94-7787	1	Rod-Blade Control
13	98-5053-01	1	Lever Indexing
14	9335124	1	Hairpin
15	321-6	1	Screw-HH
16	5359	1	Grip-Handle
17	98-1743	1	Lever
18	32146-17	1	Nut-Lock
19	9335054	2	Hairpin

Ref. No.	Part No.	Qty.	Description



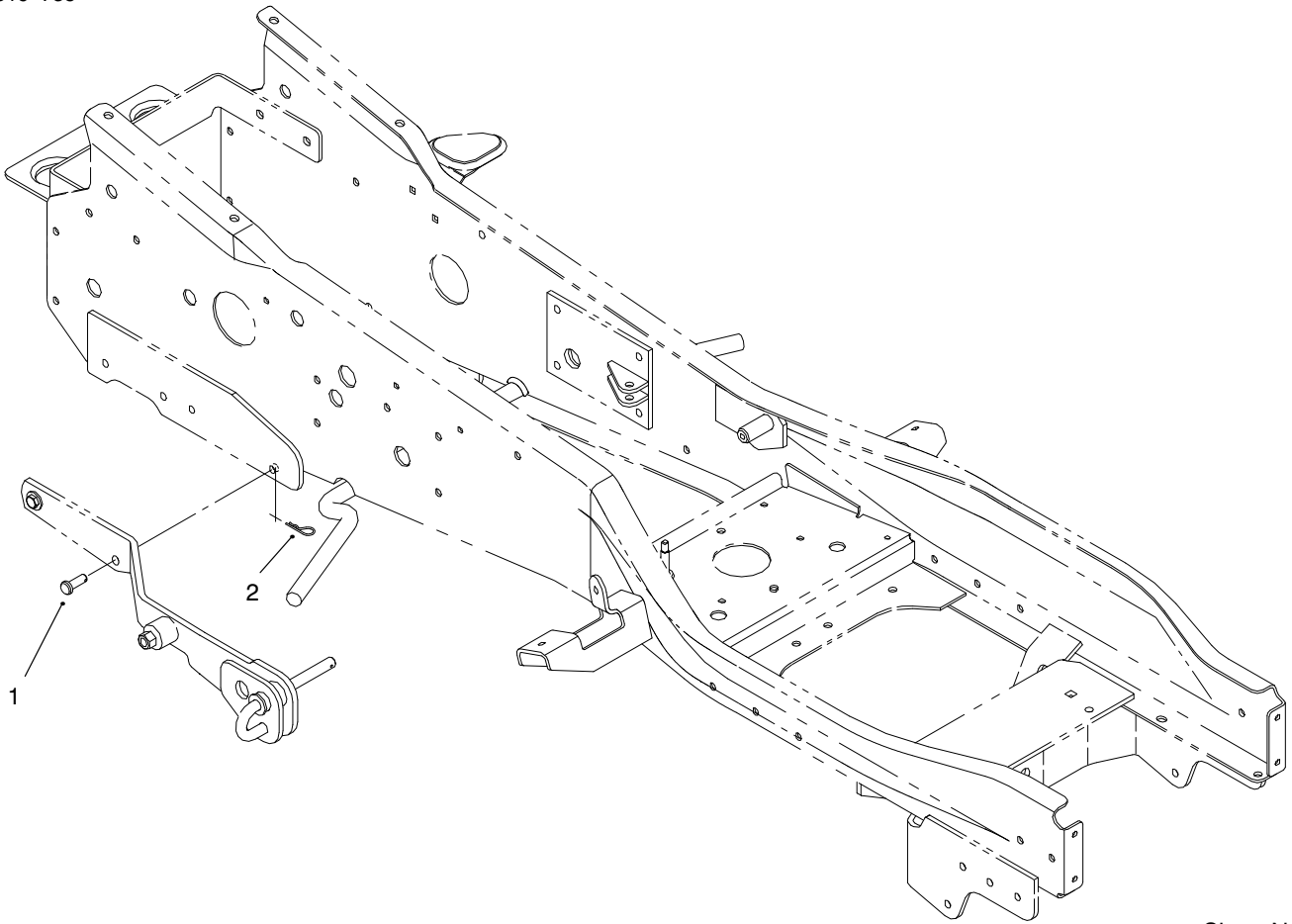
Sheet No.:3

### Blade Assembly

Ref. No.	Part No.	Qty.	Description
1	5120	2	Rod-Blade Pivot
2	88-2080	4	Lug-Spring
3	9335124	2	Hairpin
4	93-1611-01	2	Spring-Return
5	3272-11	4	Pin-Cotter
6	78-1330-01	1	Wa-Blade
7	93-1612-01	1	Plate-Blade Edge
8	3231-1	5	Screw-CARR
9	3296-39	5	Nut-Lock
10	92-8748	1	Decal-Attachment
11	4564	1	Rod-Lower
12	78-8760	1	Wa-Quadrant
*	92-6840	2	Blade Skid Kit (Optional)

Ref. No.	Part No.	Qty.	Description

\*Not Illustrated



Sheet No.:4

## Mounting Assembly

Ref. No.	Part No.	Qty.	Description
1	283-2	2	Pin-Clevis
2	9335044	2	Hairpin

Ref. No.	Part No.	Qty.	Description

# Toro Part Number Index

Part No.	Page No.	Ref. No.	Qty.	Description
2354	1	3:2	1	Spring-Compression
4564	2	11	1	Rod-Lower
4944	1	10	2	Plug
5120	2	1	2	Rod-Blade Pivot
5359	1	16	1	Grip-Handle
9335044	3	2	2	Hairpin
9335054	1	19	2	Hairpin
9335124	1	14	1	Hairpin
9335124	2	3	2	Hairpin
78-1330-01	2	6	1	Wa-Blade
78-8760	2	12	1	Wa-Quadrant
88-2080	2	2	4	Lug-Spring
88-6520	1	3:1	1	Index Pin
92-8748	2	10	1	Decal-Attachment
93-1611-01	2	4	2	Spring-Return
93-1612-01	2	7	1	Plate-Blade Edge
94-7782	1	5	1	Bracket-Cable
94-7787	1	12	1	Rod-Blade Control
94-7788	1	4	1	Cable-Indexing
94-7792-01	1	3	1	Frame-ASM
94-7793-03	1	2	1	Link-Lift
94-7987-03	1	2	1	Link-Lift
98-1743	1	17	1	Lever
98-5053-01	1	13	1	Lever Indexing
98-5055	1	1	2	Pin
283-2	1	1	2	Pin-Clevis
283-2	3	1	2	Pin-Clevis
321-6	1	15	1	Screw-HH
3216-7	1	9	1	Screw-HH
3231-1	2	8	5	Screw-CARR
3272-11	1	3:3	1	Pin-Cotter
3272-11	1	11	1	Pin-Cotter
3272-11	2	5	4	Pin-Cotter
3272-12	1	6	1	Pin-Cotter
3296-15	1	8	1	Nut-Hex Lock
3296-39	2	9	5	Nut-Lock
32146-17	1	18	1	Nut-Lock

\*Not Illustrated

**MAINTENANCE RECORD**

Date								