



**Count on it.**

**Operator's Manual**

**Soil Cultivator  
Compact Utility Loader**

Model No. 23102—Serial No. 280000001 and Up



This product complies with all relevant European directives. For details, please see the Declaration of Incorporation (DOI) at the back of this publication.

**⚠ WARNING**

**CALIFORNIA  
Proposition 65 Warning**

**This product contains a chemical or chemicals known to the State of California to cause cancer, birth defects, or reproductive harm.**

<b>Model No.</b> _____
<b>Serial No.</b> _____

This manual identifies potential hazards and has safety messages identified by the safety alert symbol (Figure 2), which signals a hazard that may cause serious injury or death if you do not follow the recommended precautions.



**Figure 2**

1. Safety alert symbol

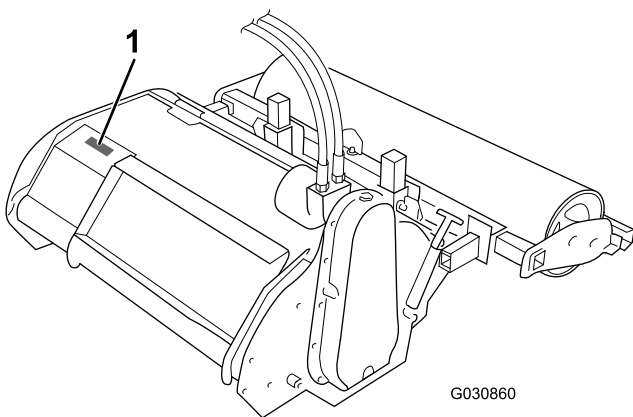
# Introduction

This soil cultivator is intended to be used on a Toro compact utility loader. It is designed primarily for burying stones, soil clods, debris, and grass which creates the perfect germination environment for fresh seeds or sod on residential or commercial properties. It is not designed for use on non-Toro traction units.

Read this information carefully to learn how to operate and maintain your product properly and to avoid injury and product damage. You are responsible for operating the product properly and safely.

You may contact Toro directly at [www.Toro.com](http://www.Toro.com) for product safety and operation training materials, accessory information, help finding a dealer, or to register your product.

Whenever you need service, genuine Toro parts, or additional information, contact an Authorized Service Dealer or Toro Customer Service and have the model and serial numbers of your product ready. Figure 1 identifies the location of the model and serial numbers on the product. Write the numbers in the space provided.



**Figure 1**

1. Model and serial number location

This manual uses 2 words to highlight information.

**Important** calls attention to special mechanical information and **Note** emphasizes general information worthy of special attention.

# Contents

Safety .....	3
Stability Ratings.....	4
Safety and Instructional Decals .....	4
Setup .....	5
Installing the Roller.....	5
Product Overview .....	6
Specifications .....	6
Attachments/Accessories.....	6
Operation .....	6
Removing the Roller .....	6
Setting the Digging Depth .....	7
Adjusting the Grader Blade.....	7
Changing the Horizontal Position of the Roller .....	8
Operating the Cultivator.....	8
Operating Tips .....	9
Maintenance .....	10
Recommended Maintenance Schedule(s) .....	10
Greasing the Cultivator .....	10
Changing the Drive-Chain Oil.....	10
Adjusting the Drive-Chain Tension .....	11
Replacing Tines.....	11
Storage .....	12
Troubleshooting .....	13

# Safety

Improper use or maintenance by the operator or owner can result in injury. To reduce the potential for injury, comply with these safety instructions and those in the traction unit *Operator's Manual*. Always pay attention to the safety alert symbol, which means *Caution, Warning, or Danger*—personal safety instruction. Failure to comply with the instruction may result in personal injury or death.

To ensure optimum performance and continued safety certification of the machine, use only genuine Toro replacement parts and accessories. Replacement parts and accessories made by other manufacturers could be dangerous, and such use could void the product warranty.

## ⚠ WARNING

There may be buried power, gas, and/or telephone lines in the work area. Shock or explosion may occur if you dig into them.

Have the property or work area marked for buried lines and do not dig in marked areas. Contact your local marking service or utility company to have the property marked (for example, in the United States, call 811 for the nationwide marking service).

## ⚠ DANGER

This product is capable of amputating hands and feet. Always follow all safety instructions to avoid serious injury.

- Keep hands, feet, and any other part of your body or clothing away from moving parts.
- Before adjusting, cleaning, repairing, or inspecting the cultivator, lower the cultivator to the ground, stop the engine, wait for all moving parts to stop, and remove the key.

## ⚠ WARNING

Tines can throw dirt, debris, and small rocks injuring the operator or bystanders; keep all bystanders away from the work area.

Wear a hard hat, safety glasses, hearing protection, and substantial footwear while operating the cultivator.

## ⚠ WARNING

When the engine is off, attachments in the raised position can gradually lower. Someone nearby may be pinned or injured by the attachment as it lowers.

Always lower the attachment lift each time you shutoff the traction unit.

## ⚠ WARNING

When going up or down hill, the machine could overturn if the heavy end is toward the downhill side. Someone may be pinned or seriously injured by the machine if it overturns.

Operate up and down slopes with the heavy end of the machine uphill. An attached cultivator makes the front end heavy.

## ⚠ WARNING

If you do not fully seat the attachment locking pins in the attachment mount plate holes, the attachment could fall off the traction unit severely injuring you or bystanders.

- Ensure that you fully seat the attachment locking pins through the holes in the attachment mount plate before lifting the attachment.
- Ensure that the attachment mount plate is free of any dirt or debris that may hinder the connection of the traction unit to the attachment.
- Refer to your traction unit *Operator's Manual* for detailed information on safely connecting an attachment to your traction unit.

## ⚠ WARNING

Hydraulic fluid escaping under pressure can penetrate skin and cause injury. Fluid injected into the skin must be surgically removed within a few hours by a doctor familiar with this form of injury; otherwise, gangrene may result.

- Keep your body and hands away from pin hole leaks or nozzles that eject high-pressure hydraulic fluid.
- Use cardboard or paper to find hydraulic leaks; never use your hands.

## ⚠ CAUTION

Hydraulic couplers, hydraulic lines/valves, and hydraulic fluid may be hot and can burn you if you touch them.

- Wear gloves when operating the hydraulic couplers.
- Allow the traction unit to cool before touching hydraulic components.
- Do not touch hydraulic-fluid spills.

## Stability Ratings

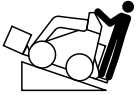

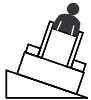
To determine the degree of slope you can traverse with the cultivator installed on a traction unit, find the stability rating for the hill position you want to travel in the appropriate table below, then find the degree of slope for the same rating and hill position in the Stability Data section of the traction unit *Operator's Manual*.

## ⚠ WARNING

Exceeding the maximum recommended slope can cause the traction unit to tip, crushing you or bystanders.

Do not drive the traction unit on a slope steeper than the maximum recommended slope, as determined in the following tables and the traction unit *Operator's Manual*.

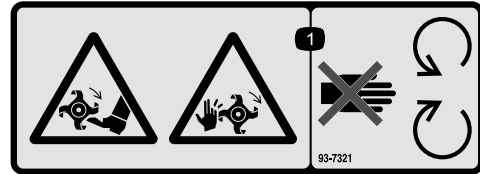
**Important:** If you have a traction unit other than the TX, use the counterweight on the traction unit when using the cultivator. Failure to use the counterweight causes the traction unit to become unstable.

Orientation	Stability Rating
<p>Front Uphill</p> 	<b>B</b>
<p>Rear Uphill</p> 	<b>D</b>
<p>Side Uphill</p> 	<b>C</b>

## Safety and Instructional Decals



Safety decals and instructions are easily visible to the operator and are located near any area of potential danger. Replace any decal that is damaged or lost.



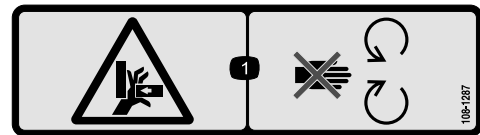
93-7321

1. Cutting/dismemberment hazard of hands and feet, rotating knives—stay away from moving parts.



100-4708

1. Thrown object hazard—keep bystanders a safe distance from the traction unit.



108-1287

1. Crushing hazard, hand—stay away from moving parts.

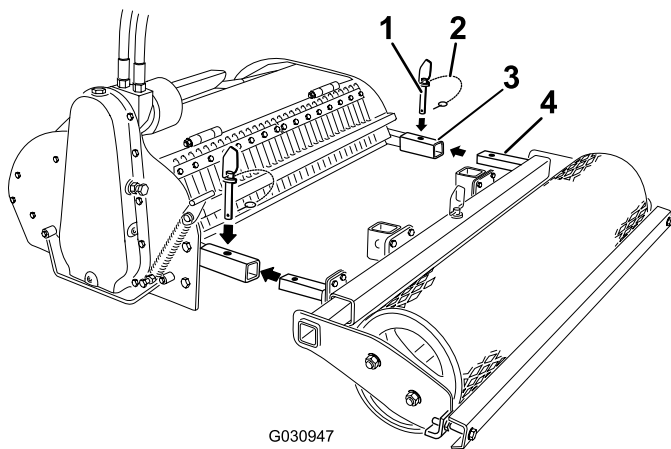
# Setup

## Installing the Roller

1. Remove the roller from the shipping stand.
2. Install the cultivator on the traction unit and remove it from the shipping stand.

**Note:** Refer to your traction unit *Operator's Manual* for more information on installing attachments on your traction unit.

3. Lower the cultivator to the ground.
4. Remove the snap-ring clevis pins from the drift pins (Figure 3).
5. Remove the drift pins from the arms of the cultivator (Figure 3).



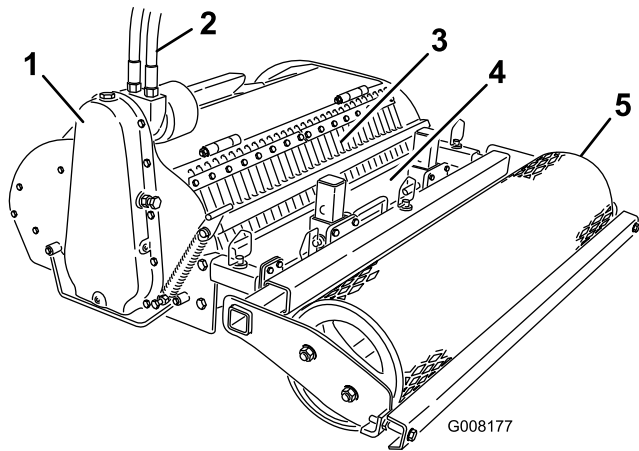
G030947

**Figure 3**

- |                         |                   |
|-------------------------|-------------------|
| 1. Drift pin            | 3. Cultivator arm |
| 2. Snap-ring clevis pin | 4. Roller arm     |

- 
6. Slide the arms on the roller into the arms on the cultivator and connect them with the drift pins (Figure 3).
  7. Secure the drift pins with the attached snap-ring clevis pins.

# Product Overview



**Figure 4**

- |                                 |                 |
|---------------------------------|-----------------|
| 1. Drive-chain housing          | 4. Grader blade |
| 2. Hydraulic hoses              | 5. Roller       |
| 3. Digging tines and tine guard |                 |

## Specifications

**Note:** Specifications and design are subject to change without notice.

Width	130 cm (51 inches)
Length	130 cm (51 inches)
Height	53 cm (21 inches)
Weight	250 kg (550 lb)

## Attachments/Accessories

A selection of Toro approved attachments and accessories is available for use with the machine to enhance and expand its capabilities. Contact your Authorized Service Dealer or Distributor or go to [www.Toro.com](http://www.Toro.com) for a list of all approved attachments and accessories.

To best protect your investment and maintain optimal performance of your Toro equipment, count on Toro genuine parts. When it comes to reliability, Toro delivers replacement parts designed to the exact engineering specification of our equipment. For peace of mind, insist on Toro genuine parts.

# Operation

Refer to your traction unit *Operator's Manual* for more information on installing and removing attachments on your traction unit.

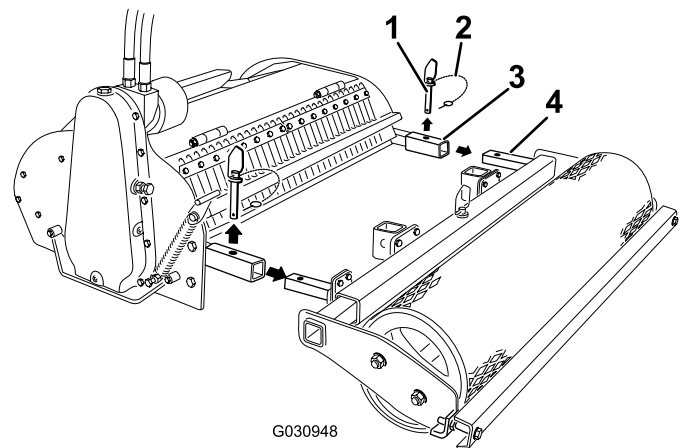
**Important:** Always use the traction unit to lift and move the attachment.

**Note:** Determine the left and right sides of the machine from the normal operating position.

## Removing the Roller

To use the cultivator as a tiller without the grader or roller, or to perform various adjustments and maintenance procedures, remove the roller and grader as follows:

1. Tilt the attachment to raise the roller off of the ground.
2. Remove the drift pins from the arms of the cultivator (Figure 5).



**Figure 5**

- |                         |                   |
|-------------------------|-------------------|
| 1. Drift pin            | 3. Cultivator arm |
| 2. Snap-ring clevis pin | 4. Roller arm     |

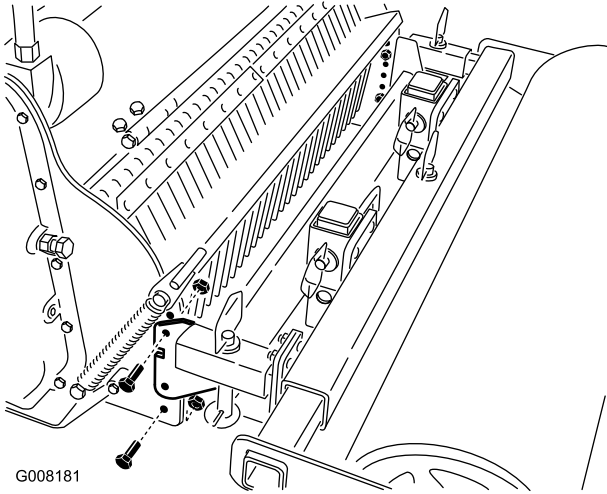
3. Pull the roller off the cultivator (Figure 5).
4. Store the pins in the arms of the roller for future use.

**Note:** To install the roller, refer to [Installing the Roller \(page 5\)](#).

# Setting the Digging Depth

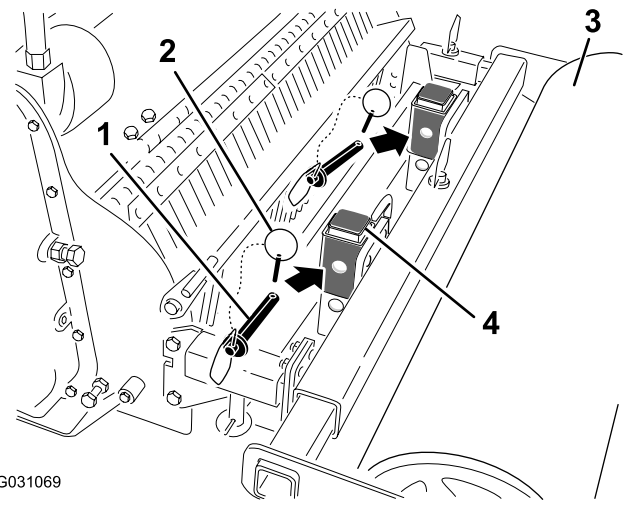
Set the dig depth of the cultivator according to the work you are performing up to 13.9 cm (5.5 inches). The depth of cut is determined by the position of the roller. You can move the roller up and down by changing the mounting location of the arms on the cultivator as follows:

1. Remove the roller from the cultivator.
2. Remove the bolts securing the arms to the cultivator (Figure 6).



**Figure 6**

3. Move the arms to the set of holes corresponding to the desired depth (Figure 6).
  - Move the arms up to set the digging depth deeper
  - Move the arms down to set the digging depth shallower.
4. Secure the arms using the bolts and nuts removed previously.
5. Install the roller.



**Figure 7**

- |                         |                               |
|-------------------------|-------------------------------|
| 1. Drift pin            | 3. Roller                     |
| 2. Snap-ring clevis pin | 4. Grader-blade mounting post |

3. Slide the grader blade up or down to the desired hole position.
4. Place the drift pins into mounting posts.
5. Place the attached snap-ring clevis pins into the 2 drift pins.
6. Swing the snap rings down over the ends of the pin to secure the grader blade.
7. Lower the roller to the ground.

# Adjusting the Grader Blade

You can adjust the grader blade that sits just behind the roller to give the desired finish. Typically, you should adjust it so that the edge of the blade is just slightly higher than the bottom of the roller.

1. Tilt the attachment to raise the roller off the ground.
2. Remove the drift pins from the grader-blade mounting posts (Figure 7).

# Changing the Horizontal Position of the Roller

The roller has 3 horizontal positions. To cultivate along the edge of the work area, align the edges of the roller with the edges of the cultivator. To cultivate an area with no messy edges between cultivation passes, offset the roller to either side so that about 15 cm (6 inches) of the roller overlaps the last cultivating pass.

1. Remove the drift pin (Figure 8).

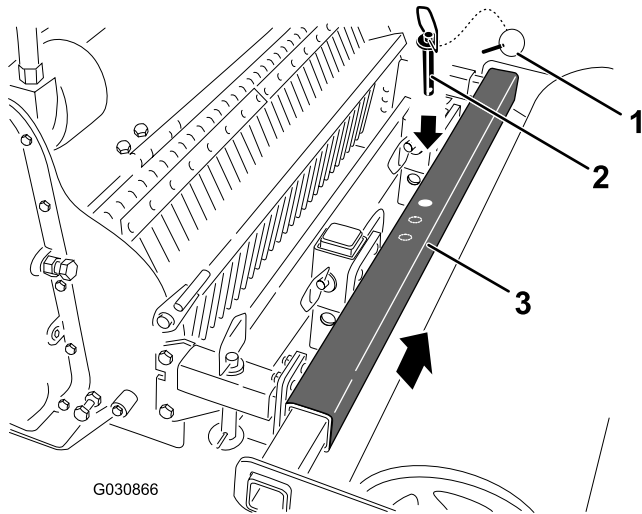


Figure 8

1. Snap-ring clevis pin
2. Drift pin
3. Roller-support bar

2. Slide the roller to the desired position (Figure 8).
3. Insert the drift pin through the roller-support bar.
4. Insert the attached snap-ring clevis pin through the drift pin to secure the roller.

# Operating the Cultivator

1. Lower the cultivator to the ground and ensure that the chain case is perpendicular to the ground (Figure 9).

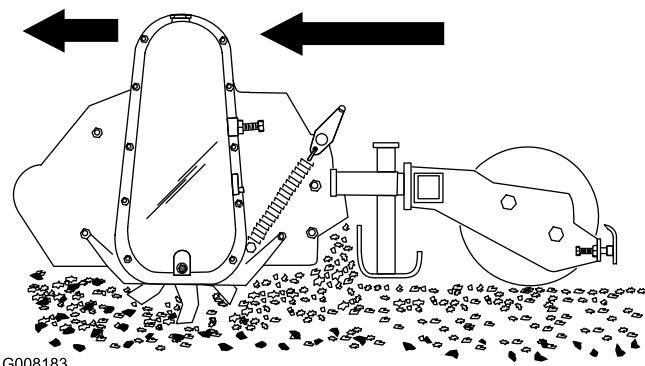


Figure 9

2. Pull the auxiliary-hydraulics lever to the operator grip to start the cultivator.
3. Slowly lower the cultivator until the blades dig into the soil and the roller touches the ground.
4. Slowly move rearward.
5. When the pass is finished, stop the hydraulics and raise the cultivator.

**Important:** Do not drive the machine across pavement or other hard surfaces without first raising the cultivator. Crossing hard surfaces with the tines lowered damages the tines and the property.



# Operating Tips

- Inspect the area where the cultivator is to be used and remove all objects such as large rocks, trash, and branches before cultivating to prevent equipment damage.
- Always begin cultivating with the slowest ground speed possible. Increase speed if conditions permit.
- Always use full throttle (maximum engine speed).
- Cultivate in long, straight passes. Turning with the tines lowered causes equipment and property damage.
- If a rock or other obstruction gets into the tines, stop the hydraulics and drive the traction unit forward until the obstruction is dislodged.
- If you are using a traction unit with a flow divider (some wheeled units have flow dividers; refer to your traction unit *Operator's Manual*), you can use the flow divider to achieve the optimal rotor and ground speed for your soil conditions as follows:
  1. Set the flow divider to the 9 o'clock position and the speed selector to the turtle position.
  2. Pull the auxiliary hydraulics lever to the operator grip to start the cultivator.
  3. Move the flow divider lever while moving the traction unit rearward until the cultivation results are ideal.

# Maintenance

## Recommended Maintenance Schedule(s)

Maintenance Service Interval	Maintenance Procedure
After the first 5 hours	<ul style="list-style-type: none"><li>• Adjust the drive-chain tension.</li></ul>
Every 25 hours	<ul style="list-style-type: none"><li>• Grease the cultivator.</li><li>• Adjust the drive-chain tension.</li></ul>
Every 200 hours	<ul style="list-style-type: none"><li>• Change the drive-chain oil.</li></ul>
Before storage	<ul style="list-style-type: none"><li>• Grease the cultivator.</li><li>• Paint chipped surfaces.</li></ul>

### ⚠ CAUTION

If you leave the key in the ignition switch, someone could start the engine. Accidental starting of the engine could seriously injure you or other bystanders.

Remove the key from the ignition switch before you do any maintenance.

## Greasing the Cultivator

**Service Interval:** Every 25 hours

Before storage

Grease the 2 fittings on the ends of the roller and 1 fitting on the 4-bolt flange on the left side of the main housing.

**Grease Type:** General-purpose grease

**Important:** Grease immediately after every washing

1. Turn the key in the ignition switch to the OFF position and remove the key.
2. Clean the grease fittings with a rag.
3. Connect a grease gun to each fitting.
4. Pump grease into the fittings until grease begins to ooze out of the bearings.
5. Wipe up any excess grease.

## Changing the Drive-Chain Oil

**Service Interval:** Every 200 hours

Check the gear lubrication oil level in the gear case every 25 operating hours and change it every 200 operating hours or once a year, whichever comes first.

**Oil Type:** 85 W 140

1. Park the cultivator on a flat surface and ensure that the drive chain cover is perpendicular to the ground.
2. Raise the attachment high enough to get a pan under the drive-chain case and support it with jack stands.

### ⚠ WARNING

Mechanical or hydraulic jacks or the lift arms may fail to support the cultivator and cause a serious injury; use jack stands to support the cultivator.

Do not use the lift arms alone or hydraulic jacks.

3. Turn the key in the ignition switch to the OFF position and remove the key.
4. Open the oil-fill hole on top of the drive-chain case (Figure 10).

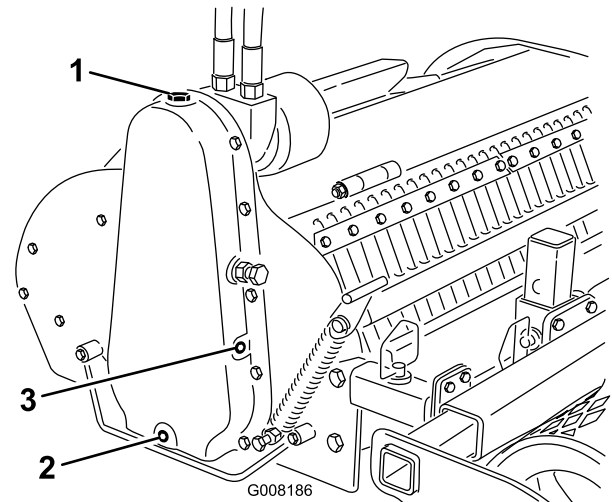


Figure 10

1. Oil-fill hole
2. Drain plug
3. Side plug

5. Place a large drip pan under the drive-chain case.

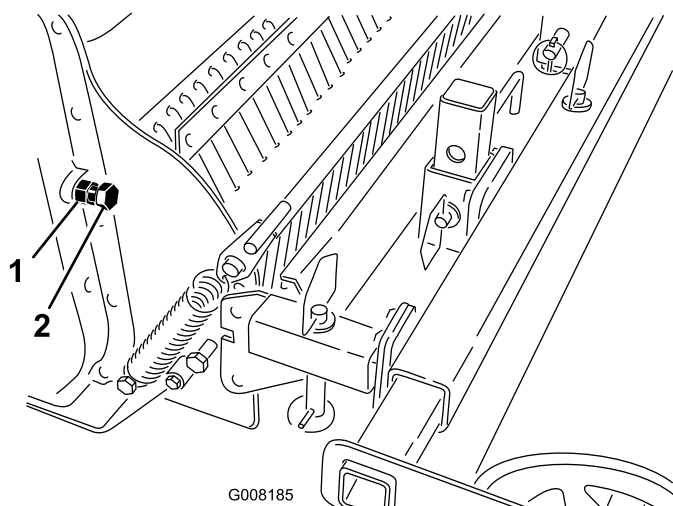
6. Remove the drain plug (Figure 10).
7. When all of the oil has drained from the case, replace and tighten the drain plug.
8. Remove the side plug (Figure 10).
9. Pour oil into the fill hole slowly until oil runs out the side-plug hole.
10. Replace the side plug and oil-fill hole plug and tighten them.
11. Wipe up any spilled oil.

## Adjusting the Drive-Chain Tension

**Service Interval:** After the first 5 hours

Every 25 hours

1. Lower the loader arms, turn the key in the ignition switch to the OFF position, and remove the key.
2. Loosen the jam nut on the chain-adjusting screw (Figure 11).



**Figure 11**

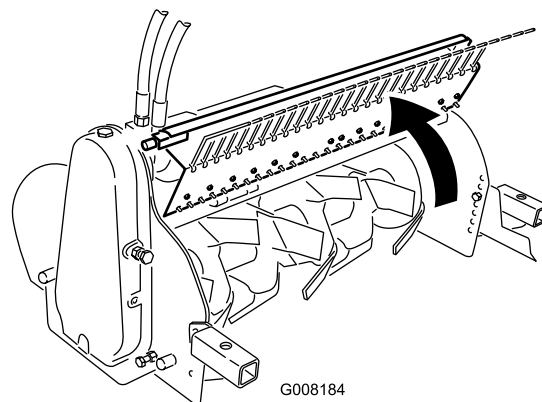
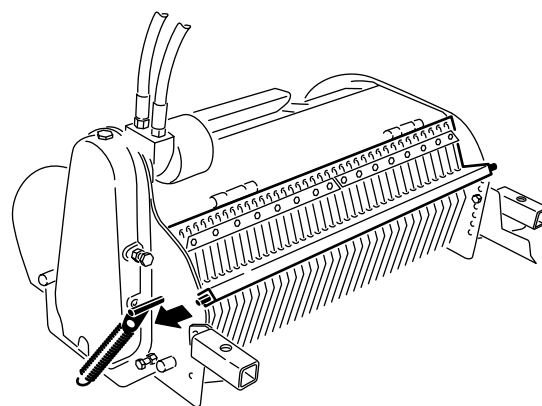
1. Jam nut
2. Chain-adjusting screw

3. Turn the screw by hand until you feel resistance (Figure 11).
4. Mark the screw with a pencil and then unscrew it 1 turn.
5. Tighten the jam nut.

## Replacing Tines

Check and replace tines when they become worn or dull. Worn or dull tines degrade the performance of the cultivator

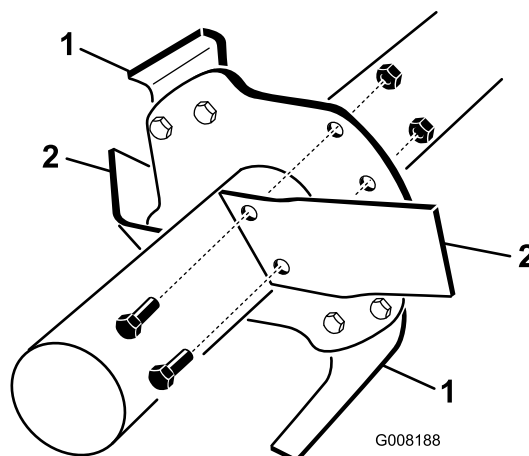
1. Lower the loader arms, turn the key in the ignition switch to the OFF position, and remove the key.
2. Remove the roller assembly from the cultivator.
3. Lift up and release the spring catch on the side of the cultivator (Figure 12).



**Figure 12**

4. Open the tine cover (Figure 12).
5. Remove old tines, 1 at a time, and install the new tines (Figure 13).

**Note:** Each center hub has 4 tines (2 right-hand and 2 left-hand). The left and right tines are alternated on the hub. Ensure that you replace each tine with the same type of tine that was installed previously.



**Figure 13**

1. Left tine
2. Right tine

6. Torque the tine-mounting bolts to 86 to 104 N-m (63 to 77 ft-lb).
7. Close the tine cover and secure it with the spring latch.

8. Install the roller assembly.

## Storage

1. Before long-term storage, wash the attachment with mild detergent and water to remove dirt and grime.
2. Grease all fittings.
3. Check and adjust the tension of the drive chain.
4. Check and tighten all bolts, nuts, and screws. Repair or replace any damaged or worn parts.
5. Ensure that all hydraulic couplers are connected together to prevent contamination of the hydraulic system.
6. Paint all scratched or bare metal surfaces. Paint is available from your Authorized Service Dealer.
7. Store the attachment in a clean, dry garage or storage area. Cover it to protect it and keep it clean.

# Troubleshooting

Problem	Possible Cause	Corrective Action
The cultivator does not operate.	<ol style="list-style-type: none"> <li>1. A hydraulic coupler is not completely connected.</li> <li>2. A hydraulic coupler is damaged.</li> <li>3. There is an obstruction in a hydraulic hose.</li> <li>4. A hydraulic hose is kinked.</li> <li>5. The auxiliary valve on the traction unit is not opening.</li> <li>6. A hydraulic valve or the drive motor is damaged.</li> <li>7. There is an obstruction in the cultivator (eg, rock or root).</li> <li>8. The drive chain is loose.</li> <li>9. The drive chain is broken.</li> </ol>	<ol style="list-style-type: none"> <li>1. Check and tighten all couplers.</li> <li>2. Check the couplers and replace any that are damaged.</li> <li>3. Find and remove the obstruction.</li> <li>4. Replace the kinked hose.</li> <li>5. Repair the valve.</li> <li>6. Contact your Authorized Service Dealer.</li> <li>7. Find and remove the obstruction.</li> <li>8. Adjust the chain tension.</li> <li>9. Repair or replace the chain.</li> </ol>

# Declaration of Incorporation

Model No.	Serial No.	Product Description	Invoice Description	General Description	Directive
23102	280000001 and Up	Soil Cultivator, Compact Utility Loader	SOIL CULTIVATOR	Compact Utility Loader	2006/42/EC

Relevant technical documentation has been compiled as required per Part B of Annex VII of 2006/42/EC.

We will undertake to transmit, in response to requests by national authorities, relevant information on this partly completed machinery. The method of transmission shall be electronic transmittal.

This machinery shall not be put into service until incorporated into approved Toro models as indicated on the associated Declaration of Conformity and in accordance with all instructions, whereby it can be declared in conformity with all relevant Directives.

Certified:



Joe Hager  
Sr. Engineering Manager  
8111 Lyndale Ave. South  
Bloomington, MN 55420, USA  
June 22, 2015

EU Technical Contact:

Marc Vermeiren  
Toro Europe NV  
B-2260 Oevel-Westerloo  
Belgium

Tel. 0032 14 562960  
Fax 0032 14 581911

## International Distributor List

<b>Distributor:</b>	<b>Country:</b>	<b>Phone Number:</b>	<b>Distributor:</b>	<b>Country:</b>	<b>Phone Number:</b>
Agrolanc Kft	Hungary	36 27 539 640	Maquiver S.A.	Colombia	57 1 236 4079
Asian American Industrial (AAI)	Hong Kong	852 2497 7804	Maruyama Mfg. Co. Inc.	Japan	81 3 3252 2285
B-Ray Corporation	Korea	82 32 551 2076	Mountfield a.s.	Czech Republic	420 255 704 220
Brisa Goods LLC	Mexico	1 210 495 2417	Mountfield a.s.	Slovakia	420 255 704 220
Casco Sales Company	Puerto Rico	787 788 8383	Munditol S.A.	Argentina	54 11 4 821 9999
Ceres S.A.	Costa Rica	506 239 1138	Norma Garden	Russia	7 495 411 61 20
CSSC Turf Equipment (pvt) Ltd.	Sri Lanka	94 11 2746100	Oslinger Turf Equipment SA	Ecuador	593 4 239 6970
Cyril Johnston & Co.	Northern Ireland	44 2890 813 121	Oy Hako Ground and Garden Ab	Finland	358 987 00733
Cyril Johnston & Co.	Republic of Ireland	44 2890 813 121	Parkland Products Ltd.	New Zealand	64 3 34 93760
Fat Dragon	China	886 10 80841322	Perfetto	Poland	48 61 8 208 416
Femco S.A.	Guatemala	502 442 3277	Pratoverde SRL.	Italy	39 049 9128 128
FIVEMANS New-Tech Co., Ltd	China	86-10-6381 6136	Prochaska & Cie	Austria	43 1 278 5100
ForGarder OU	Estonia	372 384 6060	RT Cohen 2004 Ltd.	Israel	972 986 17979
G.Y.K. Company Ltd.	Japan	81 726 325 861	Riversa	Spain	34 9 52 83 7500
Geomechaniki of Athens	Greece	30 10 935 0054	Lely Turfcare	Denmark	45 66 109 200
Golf international Turizm	Turkey	90 216 336 5993	Lely (U.K.) Limited	United Kingdom	44 1480 226 800
Hako Ground and Garden	Sweden	46 35 10 0000	Solvart S.A.S.	France	33 1 30 81 77 00
Hako Ground and Garden	Norway	47 22 90 7760	Spypros Stavrinides Limited	Cyprus	357 22 434131
Hayter Limited (U.K.)	United Kingdom	44 1279 723 444	Surge Systems India Limited	India	91 1 292299901
Hydroturf Int. Co Dubai	United Arab Emirates	97 14 347 9479	T-Markt Logistics Ltd.	Hungary	36 26 525 500
Hydroturf Egypt LLC	Egypt	202 519 4308	Toro Australia	Australia	61 3 9580 7355
Irrimac	Portugal	351 21 238 8260	Toro Europe NV	Belgium	32 14 562 960
Irrigation Products Int'l Pvt Ltd.	India	0091 44 2449 4387	Valtech	Morocco	212 5 3766 3636
Jean Heybroek b.v.	Netherlands	31 30 639 4611	Victus Emak	Poland	48 61 823 8369

### European Privacy Notice

#### The Information Toro Collects

Toro Warranty Company (Toro) respects your privacy. In order to process your warranty claim and contact you in the event of a product recall, we ask you to share certain personal information with us, either directly or through your local Toro company or dealer.

The Toro warranty system is hosted on servers located within the United States where privacy law may not provide the same protection as applies in your country.

BY SHARING YOUR PERSONAL INFORMATION WITH US, YOU ARE CONSENTING TO THE PROCESSING OF YOUR PERSONAL INFORMATION AS DESCRIBED IN THIS PRIVACY NOTICE.

#### The Way Toro Uses Information

Toro may use your personal information to process warranty claims, to contact you in the event of a product recall and for any other purpose which we tell you about. Toro may share your information with Toro's affiliates, dealers or other business partners in connection with any of these activities. We will not sell your personal information to any other company. We reserve the right to disclose personal information in order to comply with applicable laws and with requests by the appropriate authorities, to operate our systems properly or for our own protection or that of other users.

#### Retention of your Personal Information

We will keep your personal information as long as we need it for the purposes for which it was originally collected or for other legitimate purposes (such as regulatory compliance), or as required by applicable law.

#### Toro's Commitment to Security of Your Personal Information

We take reasonable precautions in order to protect the security of your personal information. We also take steps to maintain the accuracy and current status of personal information.

#### Access and Correction of your Personal Information

If you would like to review or correct your personal information, please contact us by email at [legal@toro.com](mailto:legal@toro.com).

### Australian Consumer Law

Australian customers will find details relating to the Australian Consumer Law either inside the box or at your local Toro Dealer.



# Toro Compact Utility Equipment Warranty

A One-Year Limited Warranty

Compact Utility Equipment  
(CUE) Products

## Conditions and Products Covered

The Toro Company and its affiliate, Toro Warranty Company, pursuant to an agreement between them, jointly warrant your Toro Compact Utility Equipment ("Product") to be free from defects in materials or workmanship. The following time periods apply from the date of purchase:

Products	Warranty Period
Pro Sneak Compact Utility Loaders, Trenchers, Stump Grinders, and Attachments	1 year or 1000 operating hours, whichever occurs first
Kohler Engines	3 years*
All other Engines	2 years*

Where a warrantable condition exists, we will repair the Product at no cost to you including diagnosis, labor, and parts.

\*Some engines used on Toro Products are warranted by the engine manufacturer.

## Instructions for Obtaining Warranty Service

If you think that your Toro Product contains a defect in materials or workmanship, follow this procedure:

1. Contact any Authorized Toro Compact Utility Equipment (CUE) Service Dealer to arrange service at their dealership. To locate a dealer convenient to you, access our website at [www.Toro.com](http://www.Toro.com). You may also call our Toro Customer Care Department toll free at the number below.
2. Bring the product and your proof of purchase (sales receipt) to the Service Dealer.
3. If for any reason you are dissatisfied with the Service Dealer's analysis or with the assistance provided, contact us at:

SWS Customer Care Department  
Toro Warranty Company  
8111 Lyndale Avenue South  
Bloomington, MN 55420-1196  
Toll Free: 888-384-9940

## Owner Responsibilities

You must maintain your Toro Product by following the maintenance procedures described in the *Operator's Manual*. Such routine maintenance, whether performed by a dealer or by you, is at your expense. Parts scheduled for replacement as required maintenance ("Maintenance Parts"), are warranted for the period of time up to the scheduled replacement time for that part. Failure to perform required maintenance and adjustments can be grounds for disallowing a warranty claim.

## Items and Conditions Not Covered

Not all product failures or malfunctions that occur during the warranty period are defects in materials or workmanship. This express warranty does not cover the following:

- Product failures which result from the use of non-Toro replacement parts, or from installation and use of add-on, modified, or unapproved accessories
- Product failures which result from failure to perform required maintenance and/or adjustments
- Product failures which result from operating the Product in an abusive, negligent or reckless manner
- Parts subject to consumption through use unless found to be defective. Examples of parts which are consumed, or used up, during normal product operation include, but are not limited to, belts, wipers, spark plugs, tires, filters, gaskets, wear plates, seals, O-rings, drive chains, clutches.
- Failures caused by outside influence. Items considered to be outside influence include, but are not limited to, weather, storage practices, contamination, use of unapproved coolants, lubricants, additives, or chemicals, etc.
- Normal "wear and tear" items. Normal "wear and tear" includes, but is not limited to, worn painted surfaces, scratched decals, etc.
- Repairs necessary due to failure to follow recommended fuel procedure (consult *Operator's Manual* for more details)
  - Removing contaminants from the fuel system is not covered
  - Use of old fuel (more than one month old) or fuel which contains more than 10% ethanol or more than 15% MTBE
  - Failure to drain the fuel system prior to any period of non-use over one month
- Any component covered by a separate manufacturer's warranty
- Pickup and delivery charges

## General Conditions

Repair by an Authorized Toro Compact Utility Equipment (CUE) Service Dealer is your sole remedy under this warranty.

**Neither The Toro Company nor Toro Warranty Company is liable for indirect, incidental or consequential damages in connection with the use of the Toro Products covered by this warranty, including any cost or expense of providing substitute equipment or service during reasonable periods of malfunction or non-use pending completion of repairs under this warranty. All implied warranties of merchantability and fitness for use are limited to the duration of this express warranty. Some states do not allow exclusions of incidental or consequential damages, or limitations on how long an implied warranty lasts, so the above exclusions and limitations may not apply to you.**

This warranty gives you specific legal rights, and you may also have other rights which vary from state to state.

Except for the engine warranty coverage and the Emissions warranty referenced below, if applicable, there is no other express warranty. The Emissions Control System on your Product may be covered by a separate warranty meeting requirements established by the U.S. Environmental Protection Agency (EPA) or the California Air Resources Board (CARB). The hour limitations set forth above do not apply to the Emissions Control System Warranty. Refer to the California Emission Control Warranty Statement supplied with your Product or contained in the engine manufacturer's documentation for details.

## Countries Other than the United States or Canada

Customers who have purchased Toro products outside the United States or Canada should contact their Toro Distributor (Dealer) to obtain guarantee policies for your country, province, or state. If for any reason you are dissatisfied with your Distributor's service or have difficulty obtaining guarantee information, contact the Toro importer. If all other remedies fail, you may contact us at Toro Warranty Company.

**Australian Consumer Law:** Australian customers will find details relating to the Australian Consumer Law either inside the box or at your local Toro Dealer.