



Muffler Kit

Grandstand® Mowers

Model No. 132-1547

Model No. 132-1548

Model No. 132-1549

Installation Instructions

Note: Determine the left and right sides of the machine from the normal operating position.

⚠ WARNING

CALIFORNIA Proposition 65 Warning

This product contains a chemical or chemicals known to the State of California to cause cancer, birth defects, or reproductive harm.

Installation

Loose Parts

Use the chart below to verify that all parts have been shipped.

Description	Qty.	Use
Muffler	1	Install the kit.
Right bracket	1	
Left bracket	1	
Spacer	2	
Bolt (5/16 x 1 inch)	2	
Nut (5/16 inch)	2	
Gasket	2	



Installing the Kit

Kawasaki Engines

Removing the Existing Brackets and Muffler

1. Remove the left bracket (Figure 1).

Note: Retain the 2 lock washers and 2 bolts (M8).

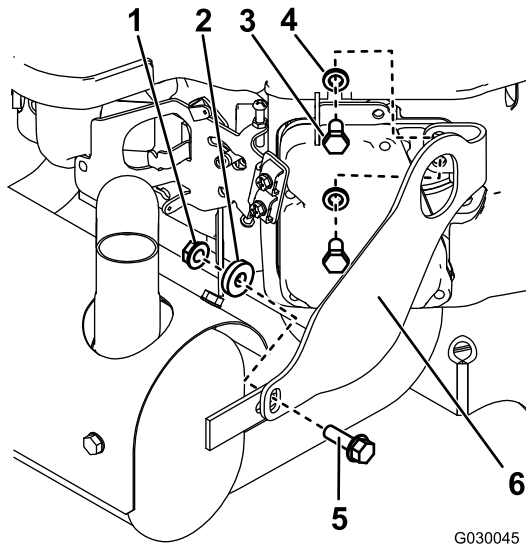


Figure 1

- | | |
|--------------|-------------------------|
| 1. Nut | 4. Lock washer |
| 2. Spacer | 5. Bolt (5/16 x 1 inch) |
| 3. Bolt (M8) | 6. Left bracket |

2. Remove the right bracket (Figure 2).

Note: Retain the 2 lock washers and 2 bolts (M8).

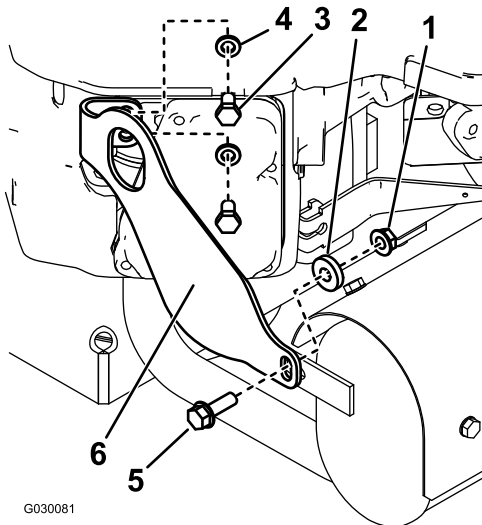


Figure 2

- | | |
|--------------|-------------------------|
| 1. Nut | 4. Lock washer |
| 2. Spacer | 5. Bolt (5/16 x 1 inch) |
| 3. Bolt (M8) | 6. Right bracket |

3. Remove the muffler (Figure 3).

Note: Retain the 4 nuts (M8), 4 lock washers, and 4 bolts (M8).

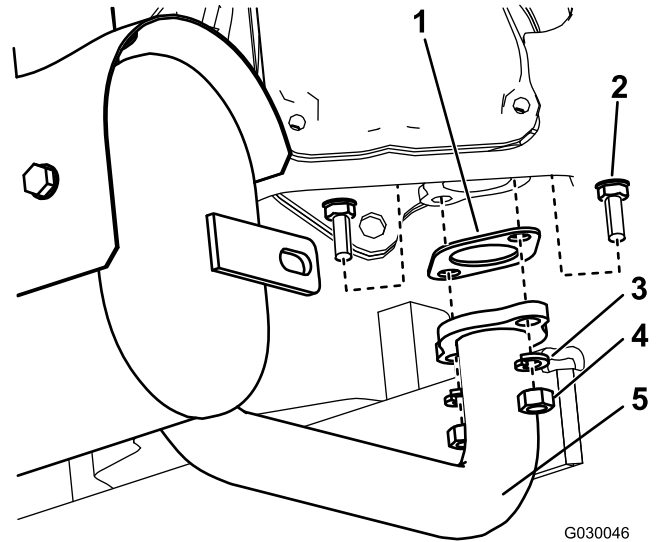


Figure 3

Left side of muffler shown

- | | |
|----------------|-------------|
| 1. Gasket | 4. Nut (M8) |
| 2. Bolt (M8) | 5. Muffler |
| 3. Lock washer | |

Installing the New Muffler and Brackets

1. Install the new muffler and 2 new gaskets to the engine using the nuts (M8), lock washers, and bolts (M8) that you removed from the previous muffler (see Figure 3).
2. Install the new right bracket to the engine using 2 bolts (M8) and 2 lock washers that you previously removed (see Figure 2).
3. Install the new left bracket to the engine using the 2 bolts (M8) and 2 lock washers that you previously removed (see Figure 1).
4. Fasten the muffler to each bracket using a nut (5/16 inch), spacer, and bolt (5/16 x 1 inch) as shown in Figure 1 and Figure 2.
5. Torque all fasteners to 26 to 31 N-m (19 to 23 ft-lb).

Important: Tighten the fasteners securing the muffler to the engine before tightening the fasteners securing the brackets to the muffler.

Installing the Kit

Kohler Engines

Removing the Existing Brackets and Muffler

1. Remove the left bracket.

Note: Retain the 3 bolts (M6).

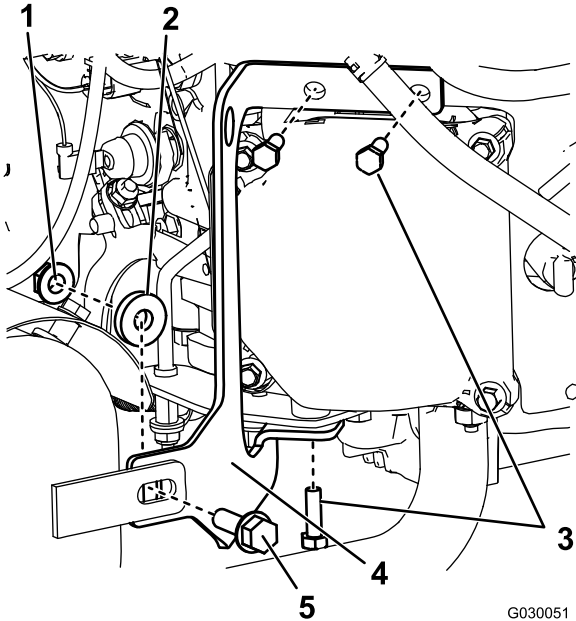


Figure 4

- | | |
|--------------|-------------------------|
| 1. Nut | 4. Left bracket |
| 2. Spacer | 5. Bolt (5/16 x 1 inch) |
| 3. Bolt (M6) | |

2. Remove the right bracket (Figure 5).

Note: Retain the 3 bolts (M6).

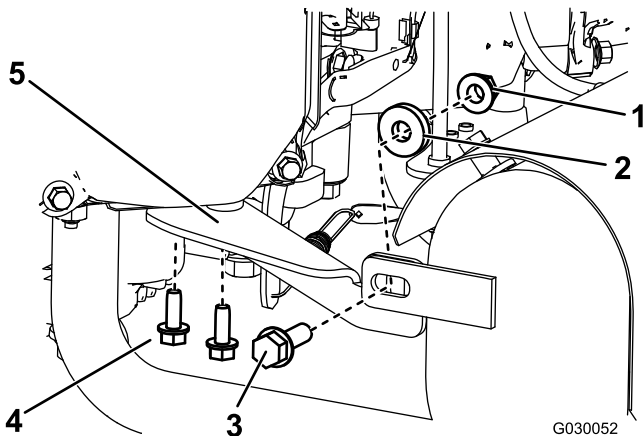


Figure 5

- | | |
|-------------------------|------------------|
| 1. Nut | 4. Bolt (M6) |
| 2. Spacer | 5. Right bracket |
| 3. Bolt (5/16 x 1 inch) | |

3. Remove the muffler (Figure 6).

Note: Retain the 4 nuts (M8) and 4 bolts (M8).

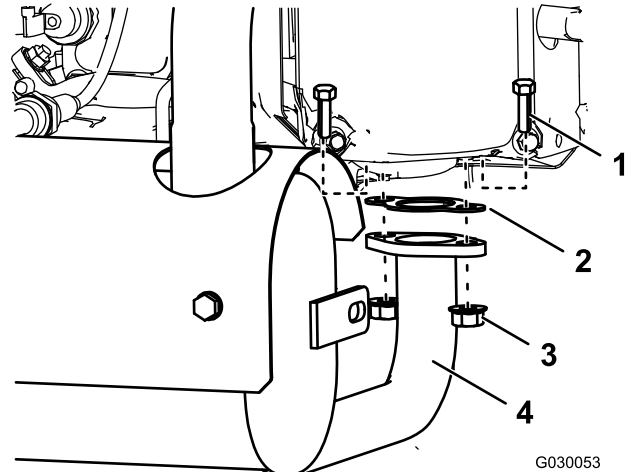


Figure 6

Left side of muffler shown

- | | |
|--------------|-------------|
| 1. Bolt (M8) | 3. Nut (M8) |
| 2. Gasket | 4. Muffler |

Installing the New Muffler and Brackets

1. Install the new muffler and 2 new gaskets to the engine using the nuts (M8) and bolts (M8) that you removed from the previous muffler (see Figure 6).
2. Apply thread-locking compound to 2 bolts (M6) that you previously removed and install the new right bracket to the engine (see Figure 5).
3. Apply thread-locking compound to the other 3 bolts (M6) that you previously removed and install the new left bracket to the engine (see Figure 4).
4. Fasten the muffler to each bracket using a nut (5/16 inch), spacer, and bolt (5/16 x 1 inch) as shown in Figure 4 and Figure 5.
5. Torque the fasteners (M8) securing the muffler to the engine to 26 to 31 N-m (19 to 23 ft-lb).

Important: Tighten the fasteners securing the muffler to the engine before tightening the fasteners securing the brackets to the muffler.

6. Torque the fasteners (M6) securing the brackets to the engine and the fasteners (5/16 inch) securing the brackets to the muffler to 6 to 8.7 N-m (53 to 77 in-lb).



Count on it.