

Jack Mount Kit

Kit No. 126-5251

Installation Instructions

▲ WARNING

CALIFORNIA Proposition 65 Warning

This product contains a chemical or chemicals known to the State of California to cause cancer, birth defects, or reproductive harm.

Loose Parts

Use the chart below to verify that all parts have been shipped.

Note: This kit is used only on the frame type shown in [Figure 1](#).

Note: If the frame does not have side mounting holes, see step 3 of the **Installation Instructions** section.

Item No.	Part No.	Description	Qty
1	126-5250	Asm-Jack Mount W/Decal	1
1:1	127-6663	Decal-Warning Jack	1
2	3230-23	Bolt-Carriage 5/16-18 x 3/4 short neck	2

Item No.	Part No.	Description	Qty
3	3231-27	Bolt-Carriage 3/8-16 x 7/8	1
4	104-8300	Nut-Nyloc 5/16-18 Flg	2
5	104-8301	Nut-Nyloc 3/8-16 Flg	1

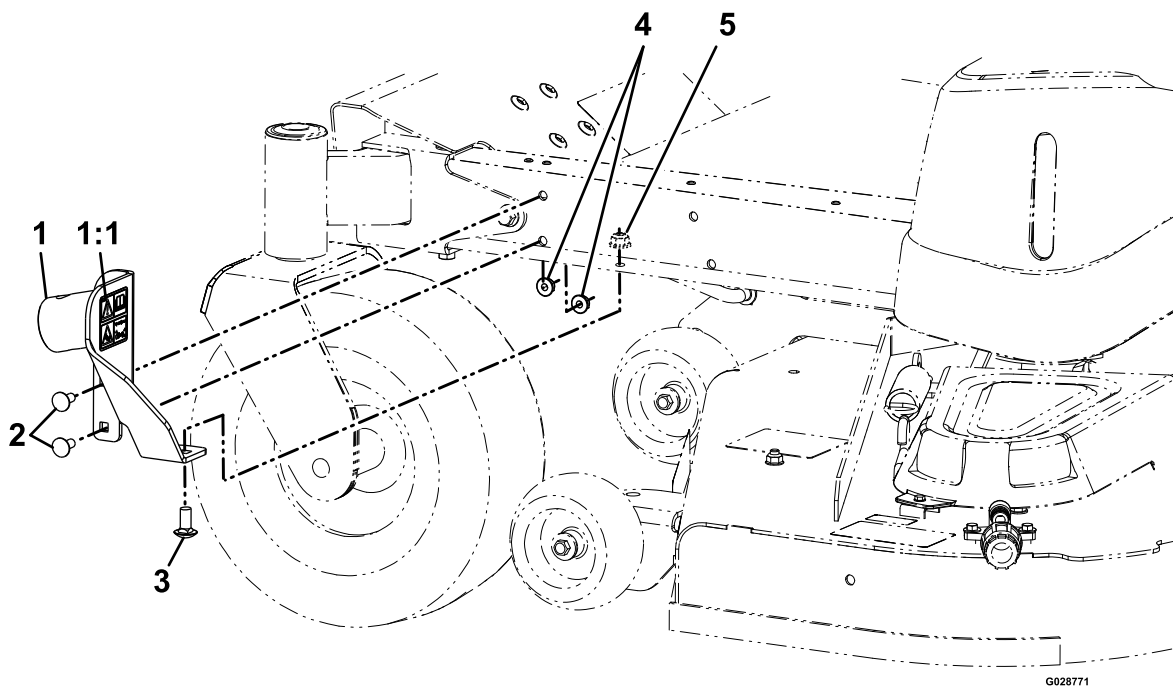


Figure 1



Safety Alert Symbol

This Safety Alert Symbol (Figure 2) is used both in this instruction sheet and on the machine to identify important safety messages which must be followed to avoid accidents

This symbol means: **ATTENTION! BECOME ALERT! YOUR SAFETY IS INVOLVED!**



Figure 2
Safety Alert Symbol

The safety alert symbol appears above information which alerts you to unsafe actions or situations and will be followed by the word **DANGER**, **WARNING**, or **CAUTION**.

DANGER: Indicates an imminently hazardous situation which, if not avoided, **Will** result in death or serious injury.

WARNING: Indicates a potentially hazardous situation which, if not avoided, **Could** result in death or serious injury.

CAUTION: Indicates a potentially hazardous situation which, if not avoided, **May** result in minor or moderate injury.

This manual uses two other words to highlight information. **Important** calls attention to special mechanical information and **Note** emphasizes general information worthy of special attention.

WARNING

While maintenance or adjustments are being made, someone could start the engine. Accidental starting of the engine could seriously injure you or other bystanders.

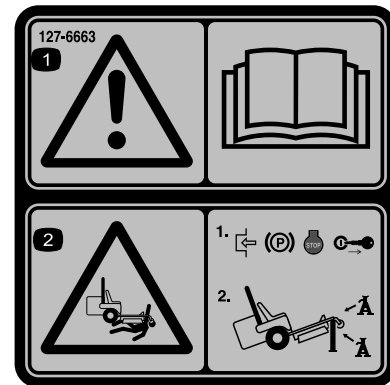
Remove the key from the ignition switch, engage parking brake, and pull the wire(s) off the spark plug(s) before you do any maintenance. Also push the wire(s) aside so it does not accidentally contact the spark plug(s).

Note: Determine the left and right sides of the machine from the normal operating position.

Note: Park the unit on a level surface. Make sure all moving parts have stopped, parking brake is engaged, the key has been removed, and the spark plug wire has been disconnected. Allow unit to cool before starting these instructions.

Safety and Instructional Decals

- Keep all safety signs legible. Remove all grease, dirt and debris from safety signs and instructional labels.
- Replace all worn, damaged, or missing safety signs.
- When replacement components are installed, be sure that current safety signs are affixed to the replaced components.
- If an attachment or accessory has been installed, make sure current safety signs are visible.
- New safety signs may be obtained from your authorized equipment dealer or distributor.
- Safety signs may be affixed by peeling off the backing to expose the adhesive surface. Apply only to a clean, dry surface. Smooth to remove any air bubbles.
- Familiarize yourself with the following safety signs and instruction labels. They are critical to the safe operation of your commercial mower.



127-6663

1. Warning—read the Operator's manual.
2. Crushing hazard—
 - 1) Engage the parking brake, stop the engine, and remove the key from the ignition.
 - 2) Jack the machine using a manufacturer-approved jack, and always use jack stands.

Installation Instructions

1. Stop the machine, disengage the blade control switch (PTO), and set the parking brake.
2. Stop the engine, remove the key, and wait for all moving parts to stop before leaving the operating position.
3. Align the holes in the jack mount with the holes on the front left side of the frame:

- For frames with side mounting holes:

Align the holes as shown in [Figure 1](#).

Note: Only use the holes shown in [Figure 1](#). If the mount holes are occupied by another accessory, it must be fully removed before installing the jack mount.

- For frames with no side mounting holes:

- A. Locate the two holes under the frame on the front left side as shown in [Figure 3](#).

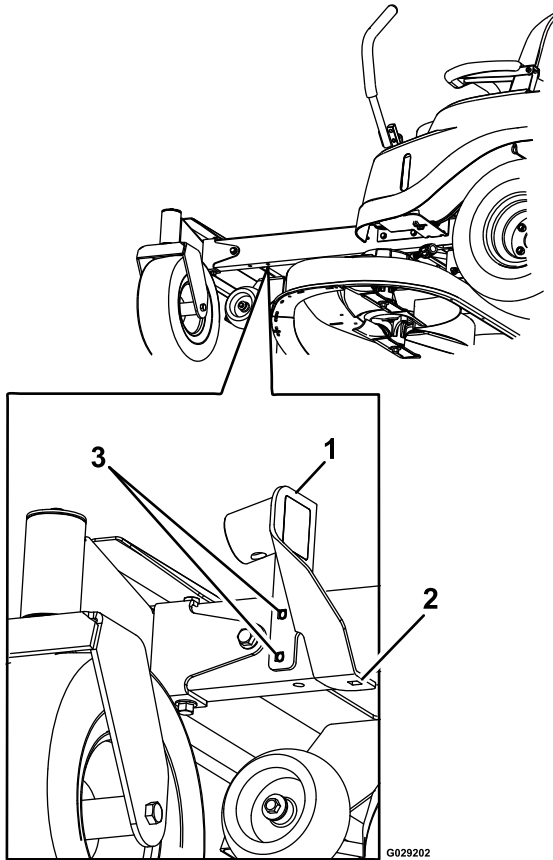


Figure 3

1. Jack mount
2. Align rear hole in frame and jack mount hole
3. Mark these hole locations

- B. Align the rear hole of the frame with the hole in the jack mount and mark the two mounting hole locations.
- C. Remove the jack mount. Center punch and drill two 11/32 inch diameter holes.

4. Using two 5/16-18 x 3/4 inch carriage bolts and two 5/16 inch nyloc nuts, secure the jack mount to the side of the frame.
5. Secure the bracket to the underside of the frame using one 3/8-16 x 7/8 inch carriage bolt and one 3/8 inch nyloc nut.

Operation

Using the Jack Kit

The jack kit raises the front end of the mower to allow you to clean under the mower deck and change the blades.

⚠ WARNING

The mower could fall onto someone and cause serious injury or death.

- Read and understand the operator's manual before performing maintenance.
- Always turn the engine off, set the parking brake and remove the key before performing any maintenance to the mower.
- Do Not keep the mower raised on the jack for extended periods of time.
- Always use a jack on a level surface.
- Ensure the jack is secured properly to the mount using the jack pin.
- The jack mount and jack are intended for use with the mower as described in this instruction sheet. Other uses may cause unseen damage or failure of the jack.
- Do Not rely solely on the jack for support. Use adequate jack stands or equivalent support.
- Do Not mount or dismount the mower while the jack is raised.
- Prior to each use, inspect jack and mount kit for proper working function and no visible signs of damage.

Note: Only use a manufacturer-approved jack(s) rated at 2,000 lb (907.2 kg) or higher lift capacity with the jack mount.

1. Disengage the blade control switch (PTO), place the unit in neutral, and set the parking brake.
2. Stop the engine, remove the key, and wait for all moving parts to stop before leaving the operating position.
3. Raise the mower deck to the transport position.
4. Insert the jack tube onto the jack mount, align the mounting holes, and secure the jack with the jack pin (see [Figure 4](#)).

Note: The jack is not supplied with this kit.

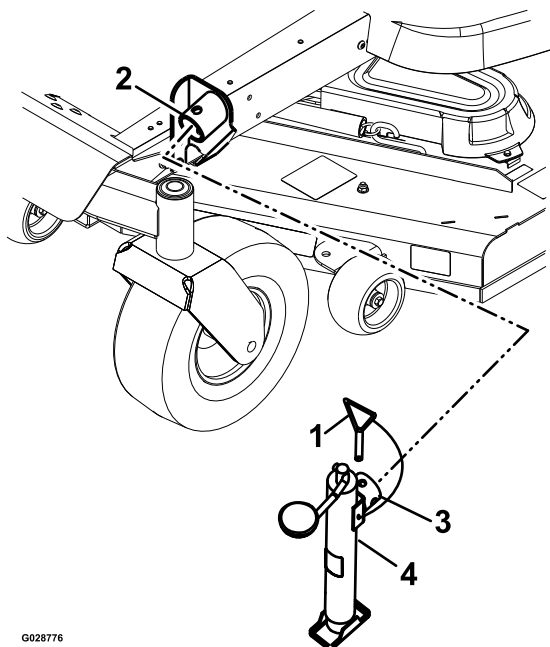


Figure 4

- | | |
|--------------------|---------------------------------|
| 1. Jack pin | 3. Jack tube |
| 2. Jack-mount tube | 4. Jack (not supplied with kit) |

G028776

5. Rotate the handle on the jack to raise the mower to the desired height. Do Not over extend the jack.

⚠ WARNING

Raising the mower could cause fuel leakage.

- Check for any fuel leakage before performing maintenance.
- If leakage occurs, immediately lower mower and drain fuel to eliminate hazard.

6. Lower the mower onto jack stands or an equivalent support.

Important: Only use the very front edge of the machine for jack stand placement points (as shown in [Figure 5](#)). On steering wheel units, Do Not use the cutting deck for jack stand points as damage may occur to the steering mechanism.

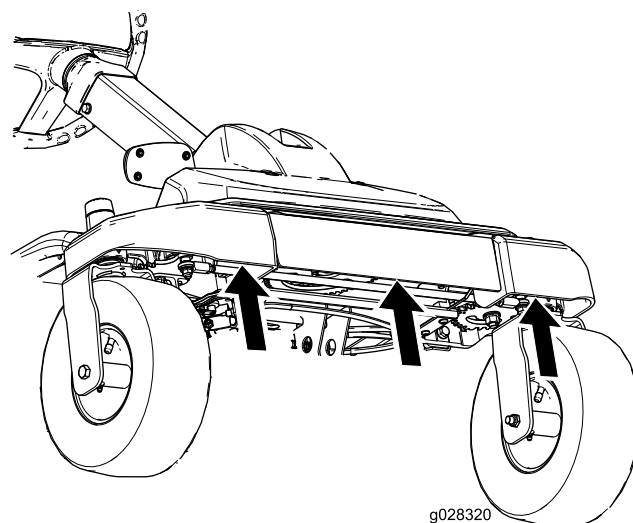


Figure 5

Correct jack stand placement points

G028320

7. Perform the maintenance.
8. When the maintenance is completed, remove the jack stands or equivalent support.
9. Rotate the handle on the jack to lower the mower.
10. Remove and store the jack.

Note: The mower is not designed to store the jack when it is not being used. Do Not drive the mower with the jack installed.