



Count on it.

Parts Catalog

Pro Sweep Turf Sweeper

Model No. 07068—Serial No. 315000001 and Up



Ordering Replacement Parts

To order replacement parts, please supply the part number, the quantity, and the description of each part desired.

Understanding Reference Numbers

Each identified part in an illustration has a reference number. The reference number for a part also appears in the parts list, along with other information about the part.

This catalog uses two special reference number formats, one to indicate parts in a service assembly and another to indicate the quantity of a given part in an illustration.

Service Assembly Reference Numbers

Parts in service assemblies have reference numbers in the form a:b. The a represents the reference number of the entire service assembly and the b represents a sequential number unique to each part within the service assembly.

For example, a wheel assembly might be identified by reference number 6, the tire by 6:1, the valve by 6:2, and the wheel by 6:3. When you order the assembly identified by reference number 6, you receive all parts identified by reference numbers 6:1, 6:2, and 6:3. However, you may also order any part individually. Reference numbers of this type appear in illustration and in parts lists.

Reference Numbers Indicating Quantity

In an illustration, if a reference number indicates more than one part, the reference number has the form nX y. The n represents the quantity of the part, the X is the multiplication symbol, and the y represents the reference number.

For example, in an illustration, the reference number 2X 37 means that two of the parts identified by reference number 37 are indicated.

List of Abbreviations

AR: as required

ASM: assembly

BBC: blade brake control

BHTF: button head thread forming

CARR: carriage

CCW: counter clockwise

CW: clockwise

DEG: degrees

DPA: Dual Point Adjustment

ECM: electronic control module

EXT: external

FH: flat head

GA: gauge

HD: heavy-duty

HF: hex flange

HH: hex head

HHF: hex head flange

HHFTF: hex head flange thread forming

HJ: hex jam

HLH: hex lag head

HOC: height-of-cut

HP: high pressure

HSBH: hex socket button head

HSFH: hex socket flat head

HSH: hex socket head

HWH: hex washer head

HWHTF: hex washer head thread forming

HYD: hydraulic

LH: left hand

LP: low pressure

LPG: Liquefied Petroleum Gas

NI: nylon insert

NPTF: national pipe thread fine

PFH: phillips flat head

PPH: phillips pan head

PPHTF: phillips pan head thread forming

PRH: phillips round head

PTH: phillips truss head

PTO: power-take-off

RH: right hand

ROPS: roll-over protection system

RRB: rear roller brush

SFH: slotted fillister head

SHH: slotted hex head

SHWH: slotted hex washer head

SPH: slotted pan head

SQH: square head

SRH: slotted round head

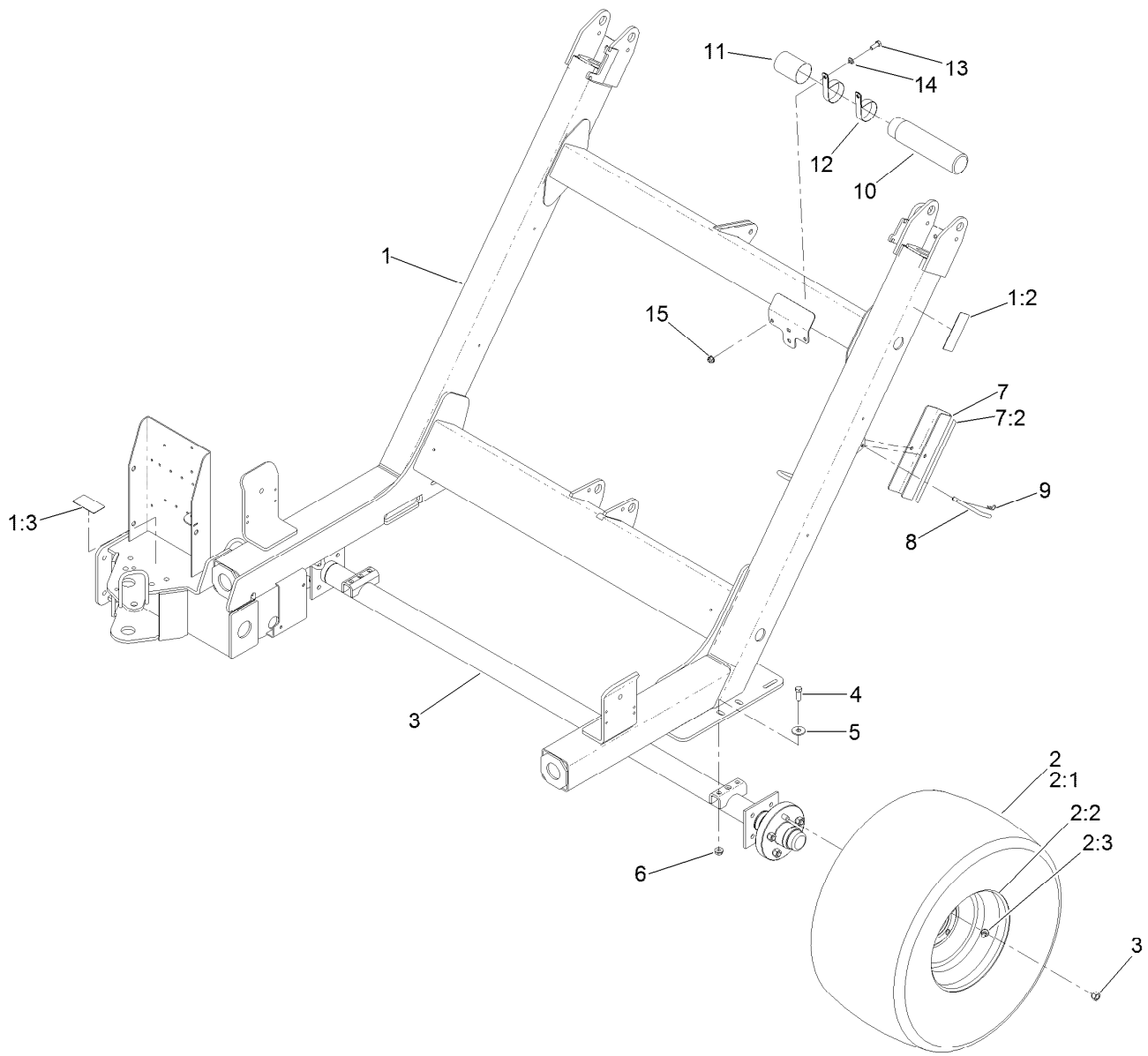
STD: standard

TAP: self tapping

TTH: torx truss head

Contents

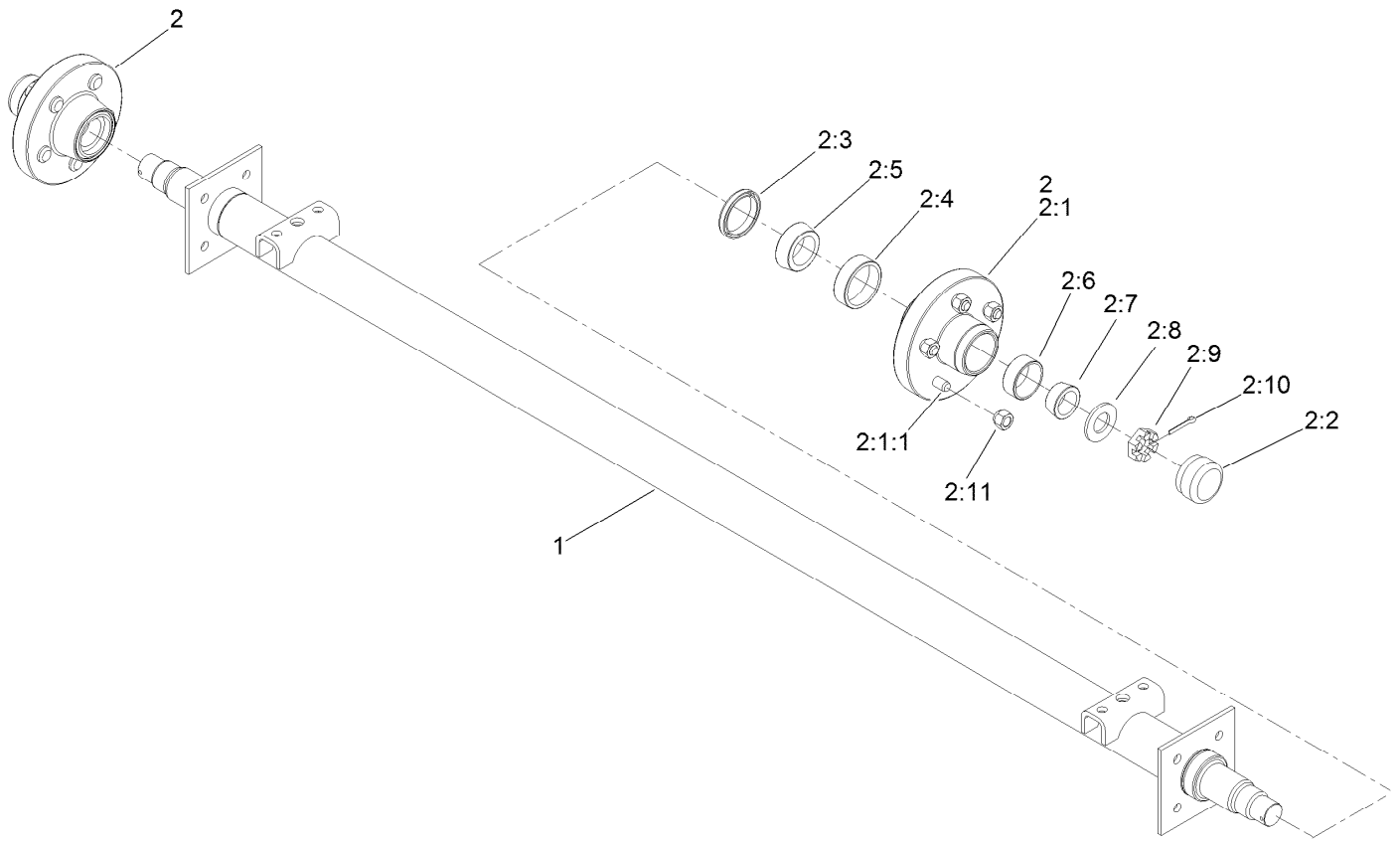
Main Frame and Axle Assembly	4
Trailer Axle Assembly No. 107-1529	5
Pitch Frame and Cylinder Assembly	6
Hydraulic Cylinder Assembly No. 107-1310	7
Saddle Frame Assembly	8
Brush Housing Assembly	9
Brush, Motor and Shield Assembly	10
Hydraulic Motor Assembly No. 105-9455	11
Brush Assembly No. 117-8310	12
Roller Assembly	13
Hopper and Baffle Assembly	14
Hopper Lid and Baffle Assembly	15
Hydraulic Manifold Valve and Hose Routing Assembly	16
Hydraulic Manifold Assembly	17
Hydraulic Manifold Assembly No. 112-6752	18
Hydraulic Fitting Assembly	19
Cable Tie Assembly	20
Tongue Assembly	21
Hydraulic Cylinder Assembly No. 115-8933	22
Electrical Assembly	23
Proximity Sensor System Assembly	24
Windrow Assembly	25
Attachments and Accessories	26



Main Frame and Axle Assembly

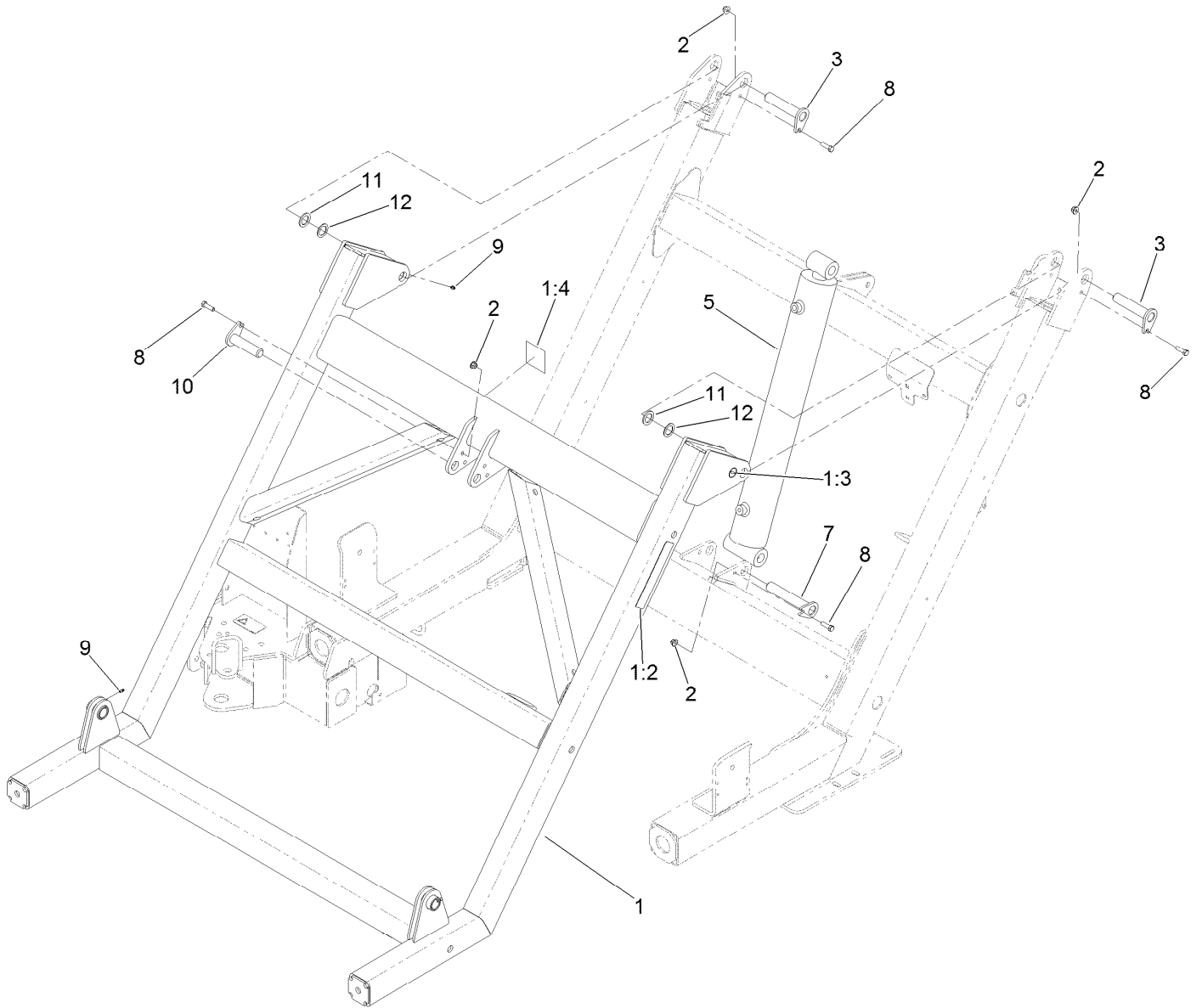
Ref.	Part Number	Qty.	Description
1	115-8985	1	Frame-Main
1:2	108-0865	2	Decal-Pinchpoint
1:3	108-0866	1	Decal-Pinchpoint
2	112-6819	2	Tire And Wheel ASM
2:1	93-6152	1	Tire
2:2	112-6818	1	Wheel
2:3	232-24	1	Stem-Valve
3	107-1529	1	Trailer Axle ASM
4	324-5	4	Screw-HH
5	63-3340	4	Washer-Support
6	32128-42	4	Nut-HF

Ref.	Part Number	Qty.	Description
7	108-0777	1	Stop-Cylinder
7:2	93-9852	1	Decal-Warning
8	63-7880	1	Pin-Latch, Brake
9	3290-250	1	Pin-Cotter
10	104-7050	1	Tube-Manual
11	104-7048	1	Cap-Housing
12	2412-133	2	R-Clamp
13	323-6	2	Screw-HH
14	3256-24	2	Washer-Flat
15	104-8301	2	Nut-Flange, NI



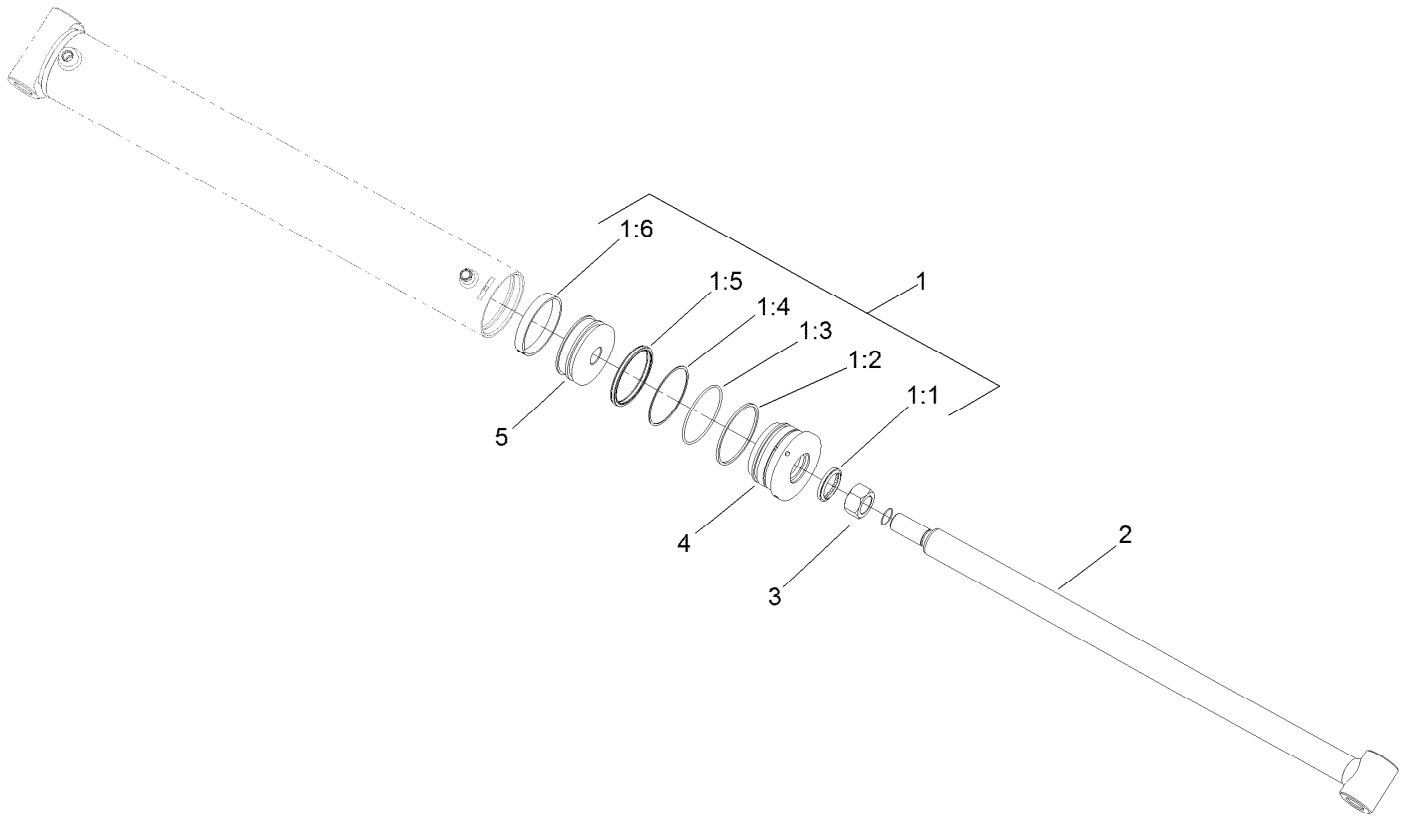
Trailer Axle Assembly No. 107-1529

<i>Ref.</i>	<i>Part Number</i>	<i>Qty.</i>	<i>Description</i>
1	107-1300	1	Axle-Trailer
2	108-0689	2	Wheel Hub Kit
2:1	107-1528	1	Hub-Wheel
2:1:1	107-1503	5	Stud-Wheel
2:2	108-0693	1	Cap-Grease
2:3	108-0694	1	Seal-Grease
2:4	108-0695	1	Cup-Bearing, Inner
2:5	108-0696	1	Cone-Bearing, Inner
2:6	108-0697	1	Cup-Bearing, Outer
2:7	108-0698	1	Cone-Bearing, Outer
2:8	3256-62	1	Washer-Flat
2:9	99-4508	1	Nut-Castle
2:10	3272-22	1	Pin-Cotter
2:11	242-50	5	Nut-Lug



Pitch Frame and Cylinder Assembly

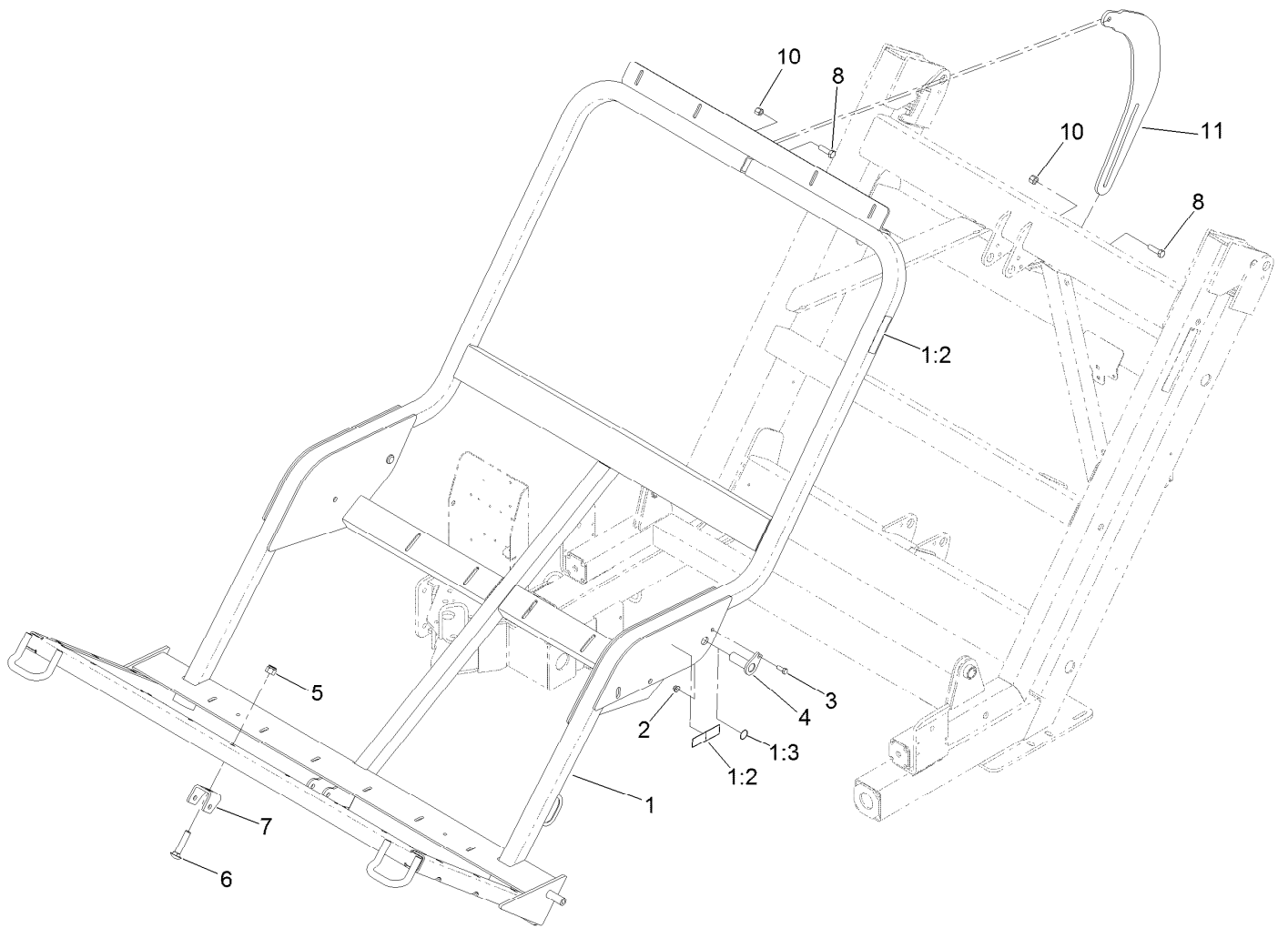
Ref.	Part Number	Qty.	Description
1	108-0778	1	Frame-Pitch
1:2	108-0863	2	Decal-Caution, Bystanders (Ce)
1:3	58-6520	2	Decal-Grease
1:4	93-9899	1	Decal-Warning
2	104-8301	4	Nut-Flange, NI
3	107-1258	2	Pin-Flag
5	107-1310	1	Cylinder-HYD
7	108-0669	1	Pin-Flag
8	323-7	4	Screw-HH
9	302-5	4	Fitting-Grease
10	108-0826	1	Pin-Flag
11	92-7845	2	Spacer-Hardened
12	10-8110	4	Washer-Thrust



Hydraulic Cylinder Assembly No. 107-1310

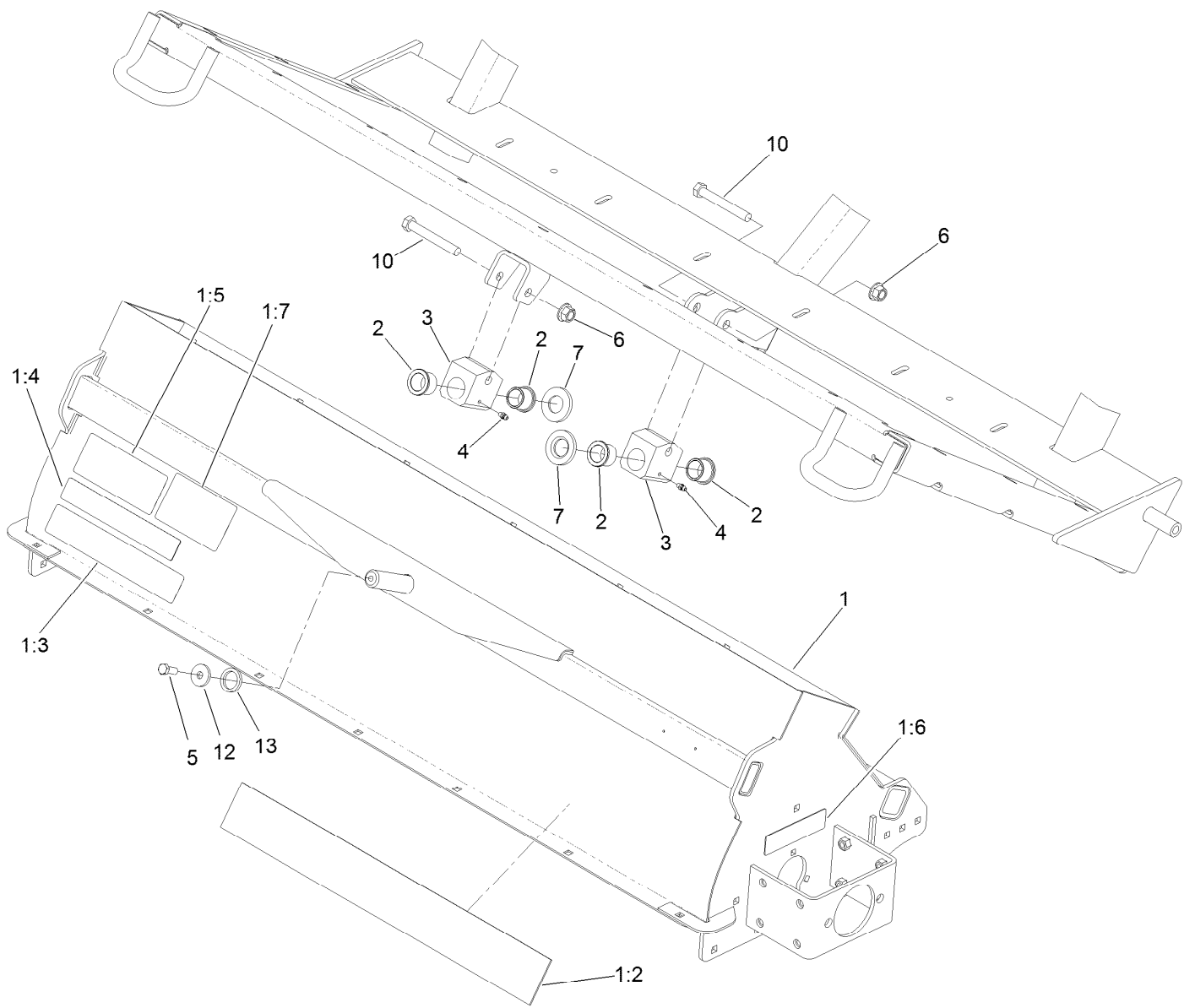
Ref.	Part Number	Qty.	Description
1	108-2439	1	Seal Kit
1:1		1	Wiper ●
1:2		1	O-Ring ●
1:3		1	O-Ring ●
1:4		1	Ring-Back Up ●
1:5		1	Seal ●
1:6		1	Ring-Wear ●
2		1	Rod ASM ●
3		1	Locknut ●
4		1	Head ●
5		1	Piston ●

● Not serviced separately



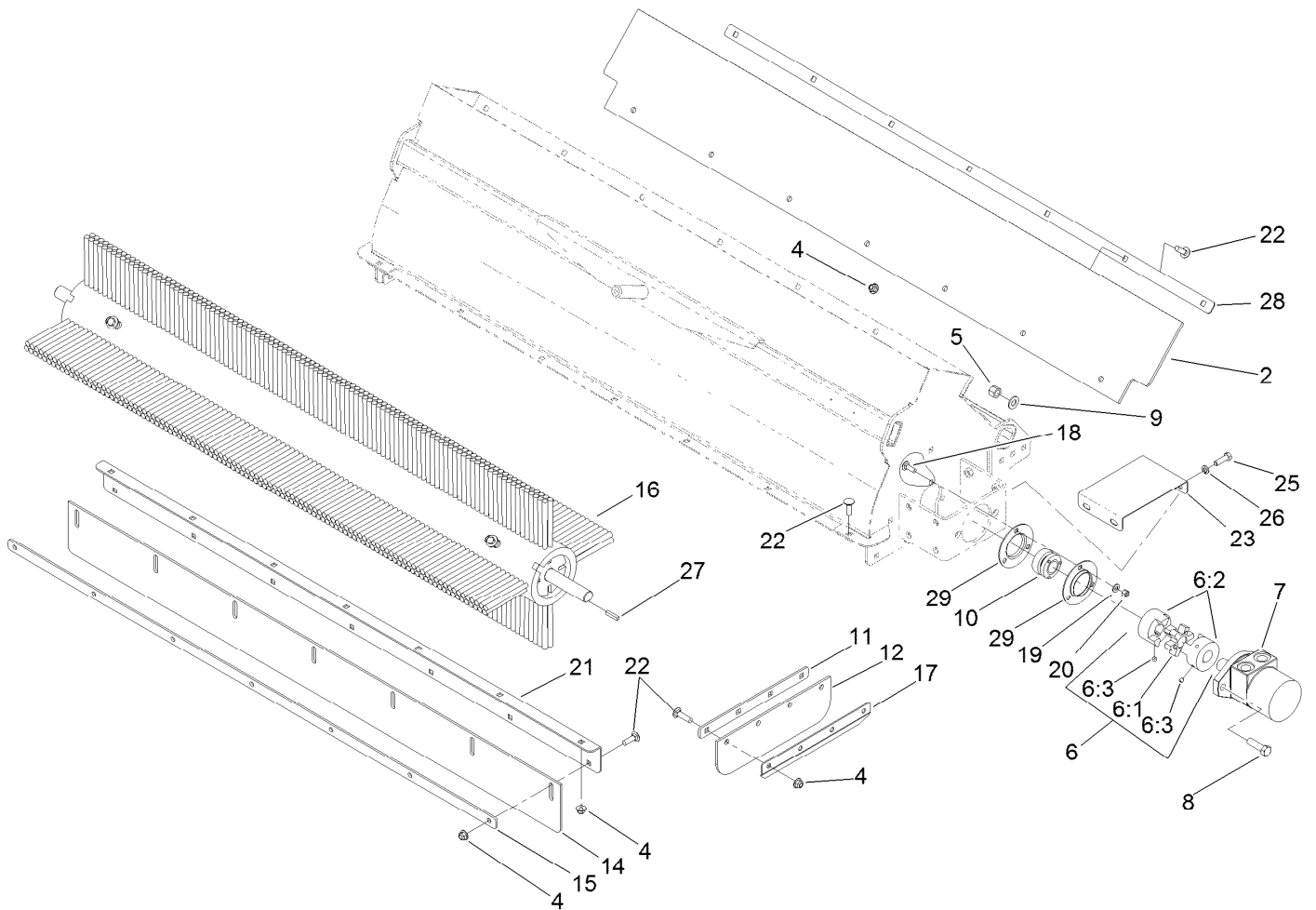
Saddle Frame Assembly

<i>Ref.</i>	<i>Part Number</i>	<i>Qty.</i>	<i>Description</i>
1	117-8320	1	Saddle ASM
1:2	108-0872	4	Decal-Warning
1:3	58-6520	2	Decal-Grease
2	104-8301	2	Nut-Flange, NI
3	323-6	2	Screw-HH
4	108-0657	2	Pin-Flag
5	3296-53	1	Nut-Lock, NI
6	3233-32	1	Bolt-Carriage
7	117-8305-03	1	Saddle-Pivot
8	325-7	2	Screw-HH
10	3296-23	2	Nut-Lock, NI
11	108-0759-01	1	Link



Brush Housing Assembly

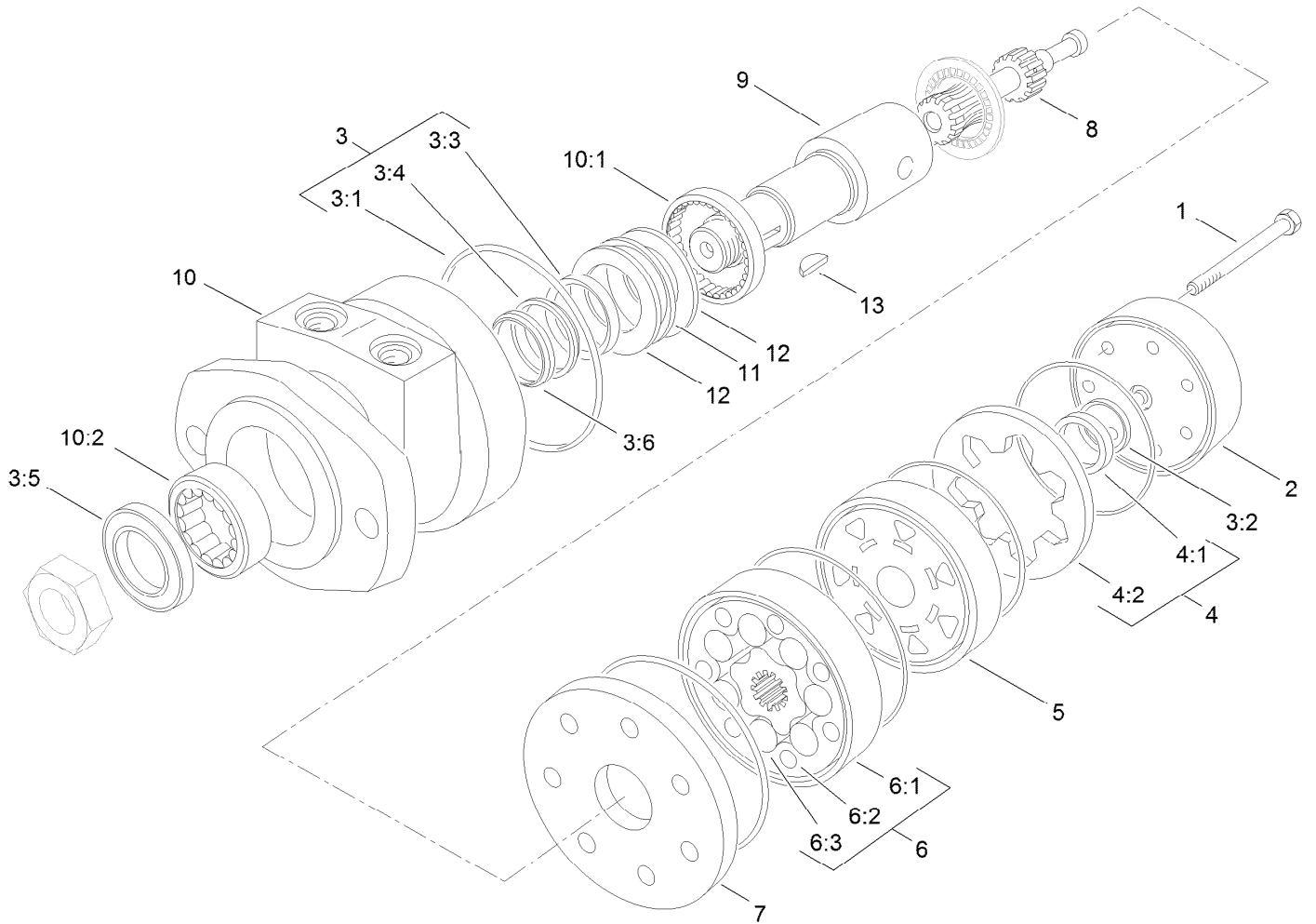
<i>Ref.</i>	<i>Part Number</i>	<i>Qty.</i>	<i>Description</i>	<i>Ref.</i>	<i>Part Number</i>	<i>Qty.</i>	<i>Description</i>
1	117-8309	1	Brush Housing ASM	3	117-8307	2	Mount-Pivot
1:2	117-8365	1	Decal	4	302-5	2	Fitting-Grease
1:3	108-0868	1	Decal-Pinchpoint	5	323-6	1	Screw-HH
1:4	108-0862	1	Decal-Warning, Shields	6	99-5107	2	Nut-Lock
1:5	108-0873	1	Decal-Danger	7	117-8302	2	Washer
1:6	108-0870	1	Decal-Warning, Shields	10	325-35	2	Screw-HH
1:7	110-7999	1	Decal-Warning, Offset Lift	12	53-6380	1	Washer-Flat
2	94-8949	4	Bushing-Flange	13	115-5666	1	Spacer-Hardened



Brush, Motor and Shield Assembly

Ref.	Part Number	Qty.	Description
2	108-0686	1	Shield-Rubber, Top
4	104-8301	29	Nut-Flange, NI
5	3296-23	2	Nut-Lock, NI
6	108-0760	1	Coupling-Jaw, Stock
6:1	108-0761	1	Spider-Coupling
6:2	108-0762	2	Coupling-Jaw
6:3	3246-2	4	Screw-Set, HSH
7	105-9455	1	Motor
8	325-7	2	Screw-HH
9	3256-26	2	Washer-Flat
10	115-8975	2	Bearing-Self-Aligning
11	108-0668-03	2	Plate-Skirt, Side
12	115-9093	2	Shield, Rubber-Side
14	115-9092	1	Shield, Rubber-Front

Ref.	Part Number	Qty.	Description
15	108-0667-03	1	Plate-Skirt, Front
16	117-8310	1	Brush ASM
17	107-1439-03	2	Plate-Angle
18	3230-2	6	Bolt-CARR
19	3256-23	6	Washer-Flat
20	3296-29	6	Nut-Lock, NI
21	107-1280-01	1	Angle-Front
22	3231-25	29	Bolt-CARR
23	108-0781	2	Cover-Coupler
25	323-6	8	Screw-HH
26	3253-21	8	Washer-Lock
27	13-2840	1	Key-Square
28	108-0844-03	1	Plate-Shield, Top
29	107-1474	4	Flange-3 Bolt

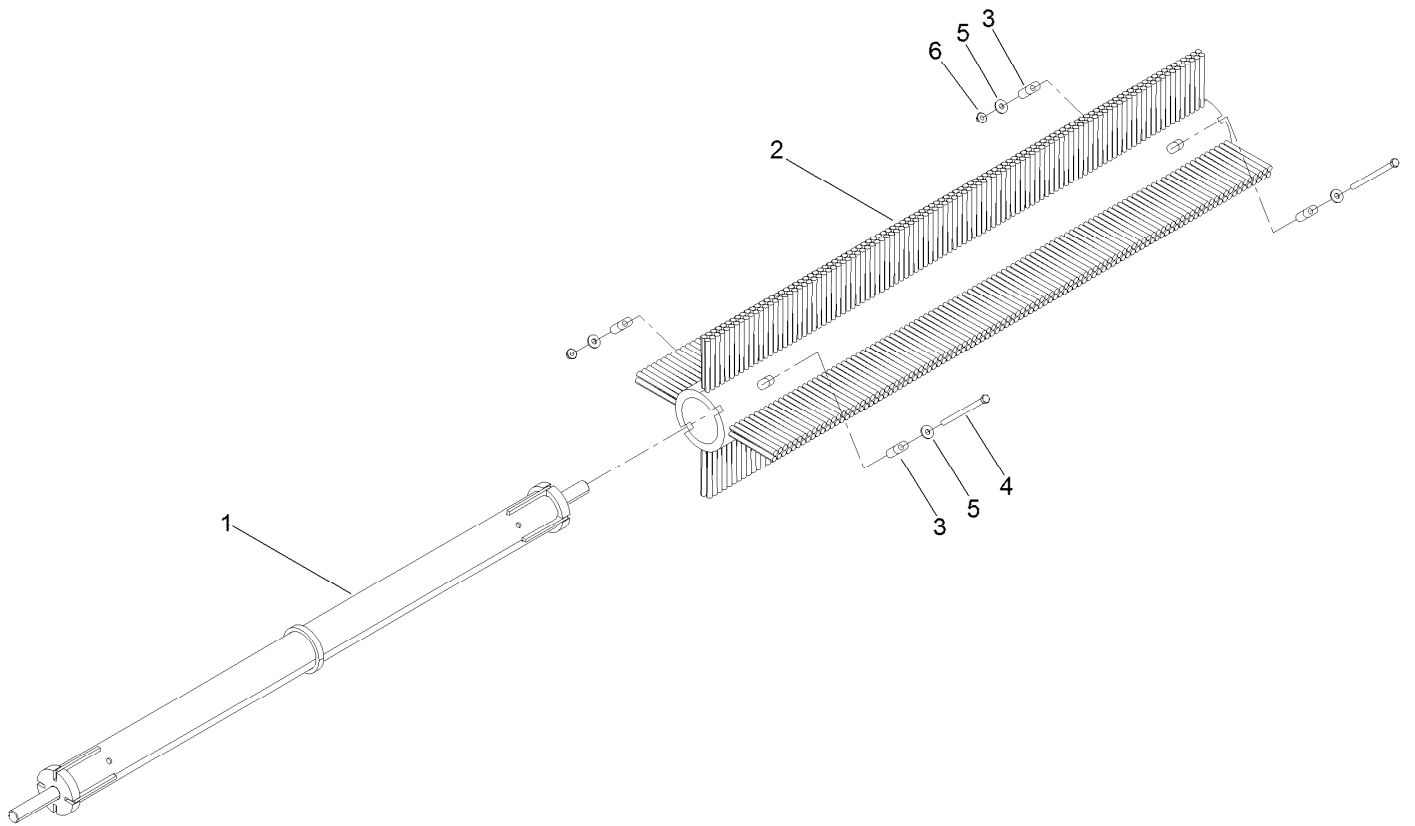


Hydraulic Motor Assembly No. 105-9455

Ref.	Part Number	Qty.	Description	Ref.	Part Number	Qty.	Description
1	322-33	5	Screw-HH	6	106-1984	1	Rotor Set
2	106-1981	1	Cover-End	6:1		1	Stator ■
3	106-1989	1	Seal Kit	6:2		7	Vane ■
3:1		6	Seal-Ring ■	6:3		1	Rotor ■
3:2		1	Seal-Commutator ■	7	106-1985	1	Plate-Wear
3:3		1	Seal-Dirt And Water ■	8	106-1986	1	Link-Drive
3:4		1	Washer-Backup ■	9	106-1987	1	Shaft-Coupling
3:5		1	Seal-Shaft ■	10	106-1988	1	Housing ASM
3:6		1	Ring-Back Up ●■	10:1		1	Bearing ■
4	106-1982	1	Commutator ASM	10:2		1	Bearing ■
4:1		1	Commutator ■	11		1	Bearing-Thrust ■
4:2		1	Ring-Commutator ■	12		1	Washer-Thrust ■
5	106-1983	1	Manifold	13	106-1990	1	Key-Woodruff

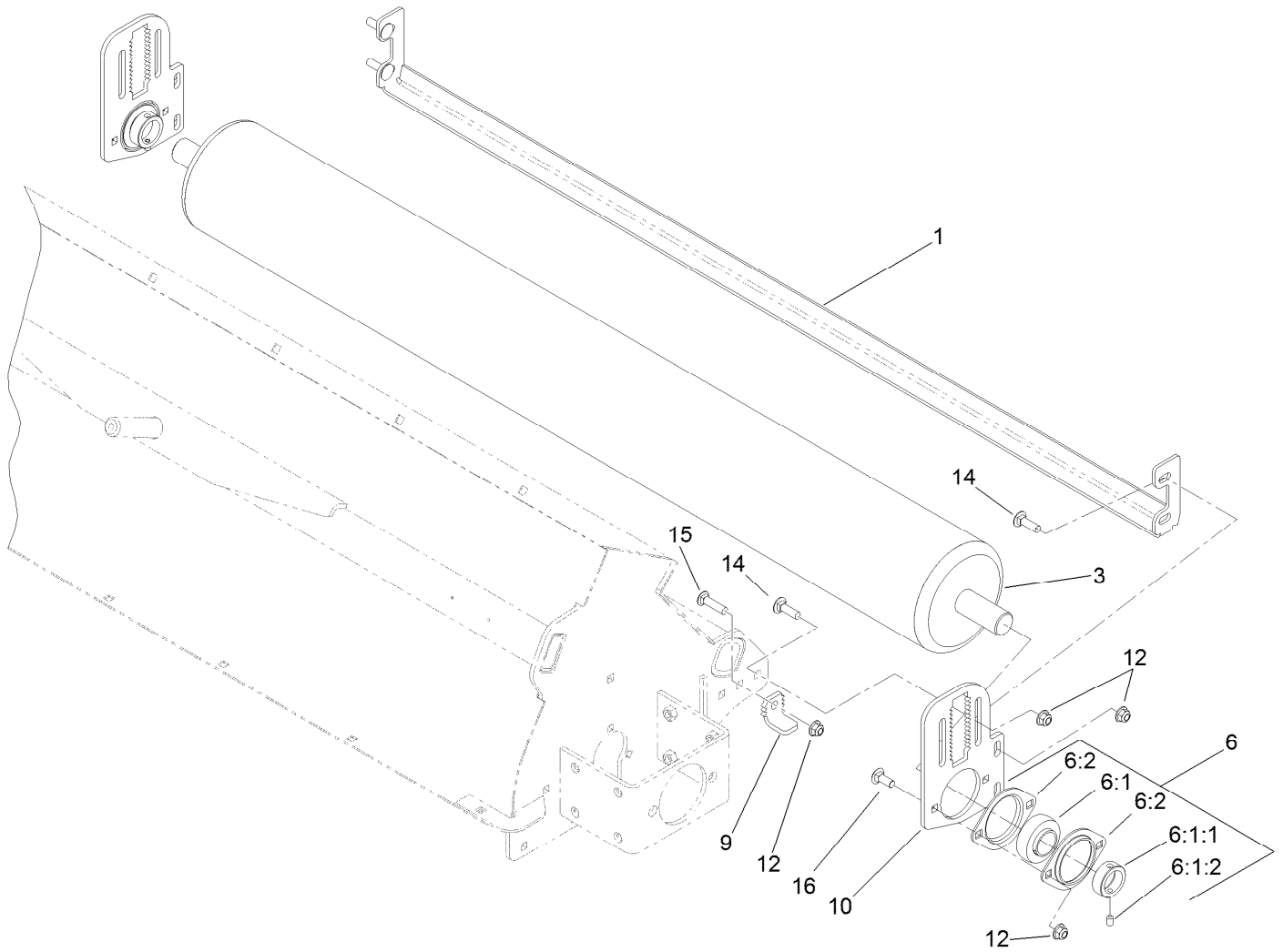
● Not illustrated

■ Not serviced separately



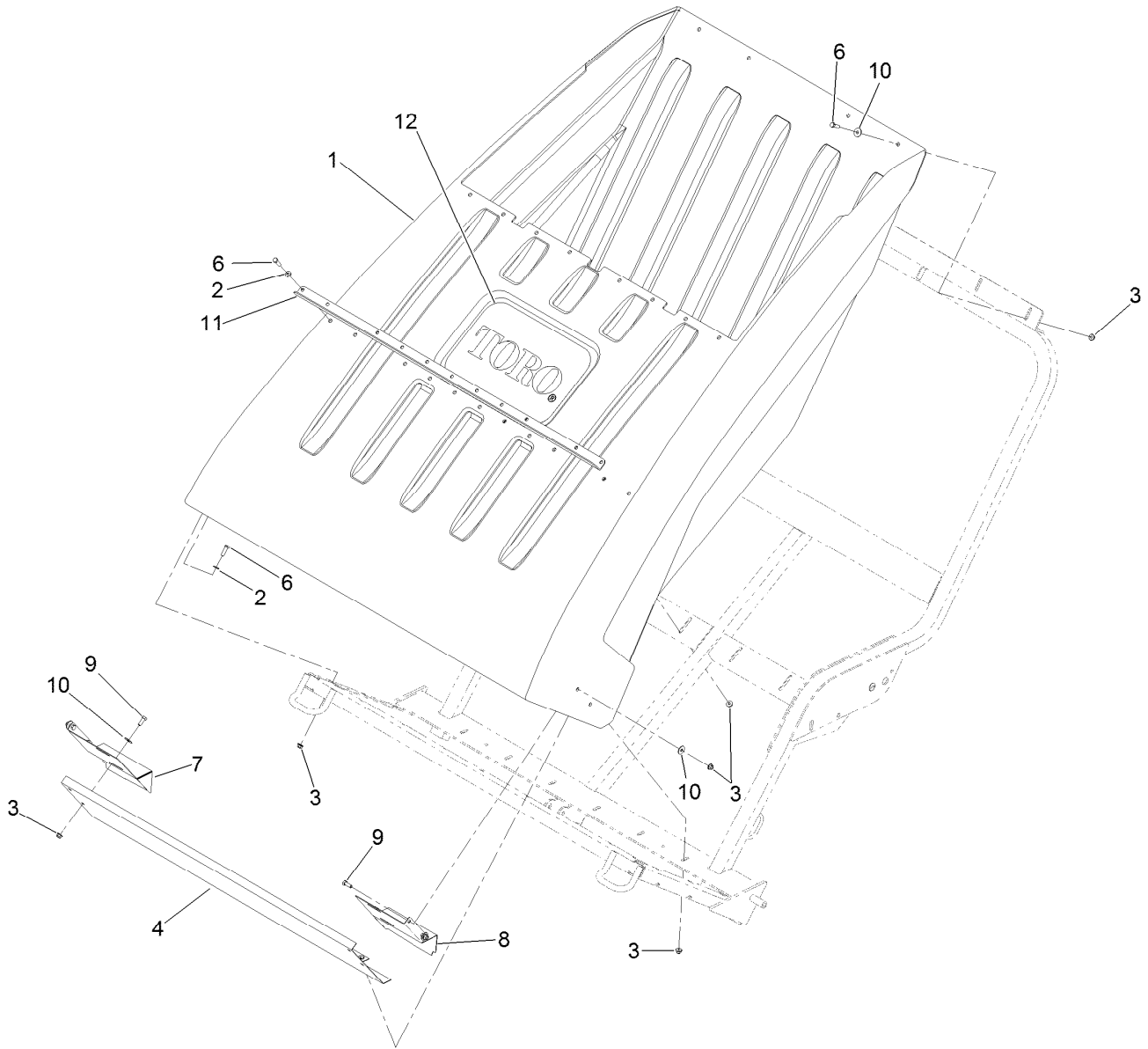
Brush Assembly No. 117-8310

<i>Ref.</i>	<i>Part Number</i>	<i>Qty.</i>	<i>Description</i>
1	115-8930	1	Axle-Brush
2	115-8982	1	Brush-Paddle
3	115-8962	4	Key
4	323-58	2	Bolt-TAP, HH
5	80-6990	4	Washer-Hardened
6	104-8301	2	Nut-Flange, NI



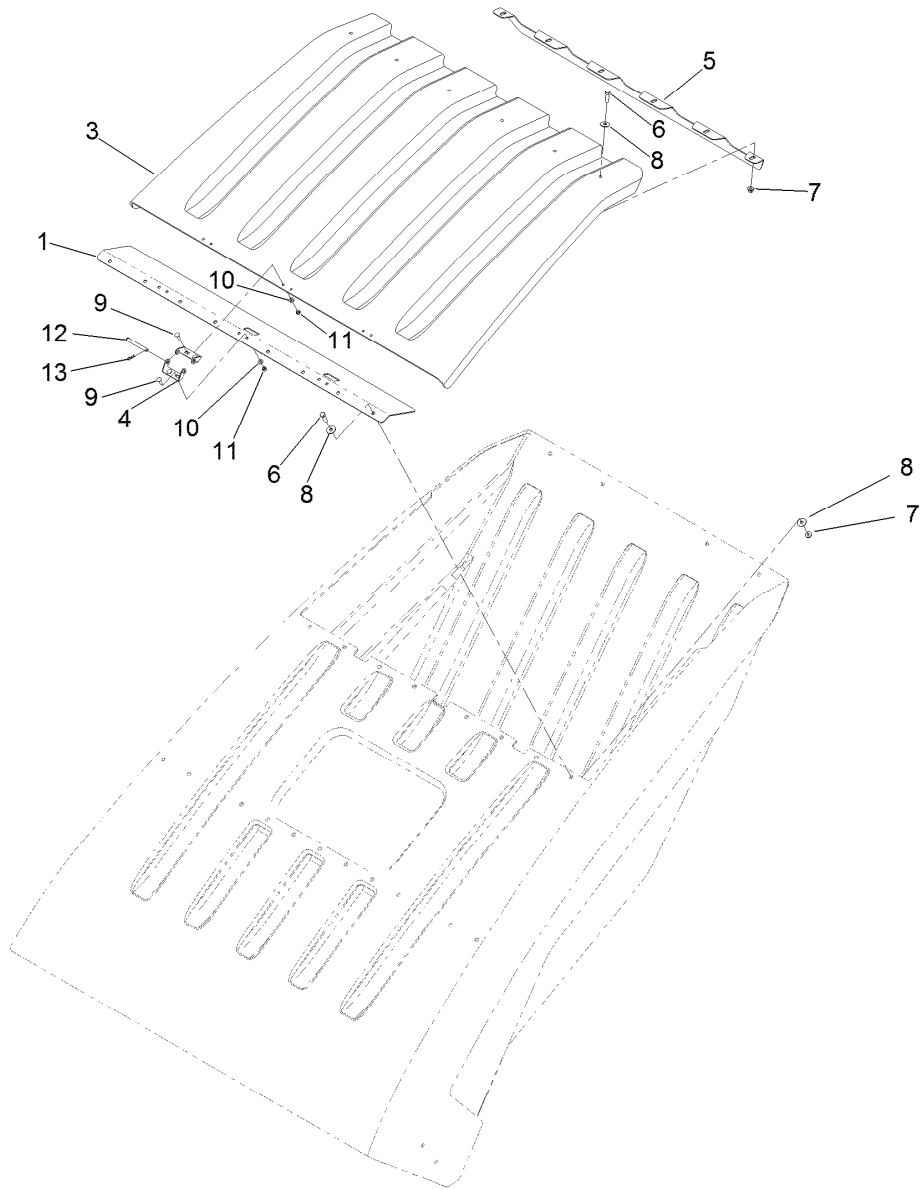
Roller Assembly

<i>Ref.</i>	<i>Part Number</i>	<i>Qty.</i>	<i>Description</i>
1	107-1477-01	1	Angle-Scraper
3	107-1294-03	1	Roller ASM
6	107-1358	2	Bearing-Flange
6:1	107-1357	1	Bearing
6:1:1	251-246	1	Collar W/Set Screws
6:1:2	3246-17	1	Setscrew-HSH
6:2	107-1356	2	Flange-2 Bolt
9	107-1438	2	Key-Adjuster, Bent
10	107-1437-01	2	Plate-Adjuster
12	104-8301	14	Nut-Flange, NI
14	3231-25	8	Bolt-CARR
15	3231-4	2	Screw-CARR
16	3231-2	4	Bolt-CARR



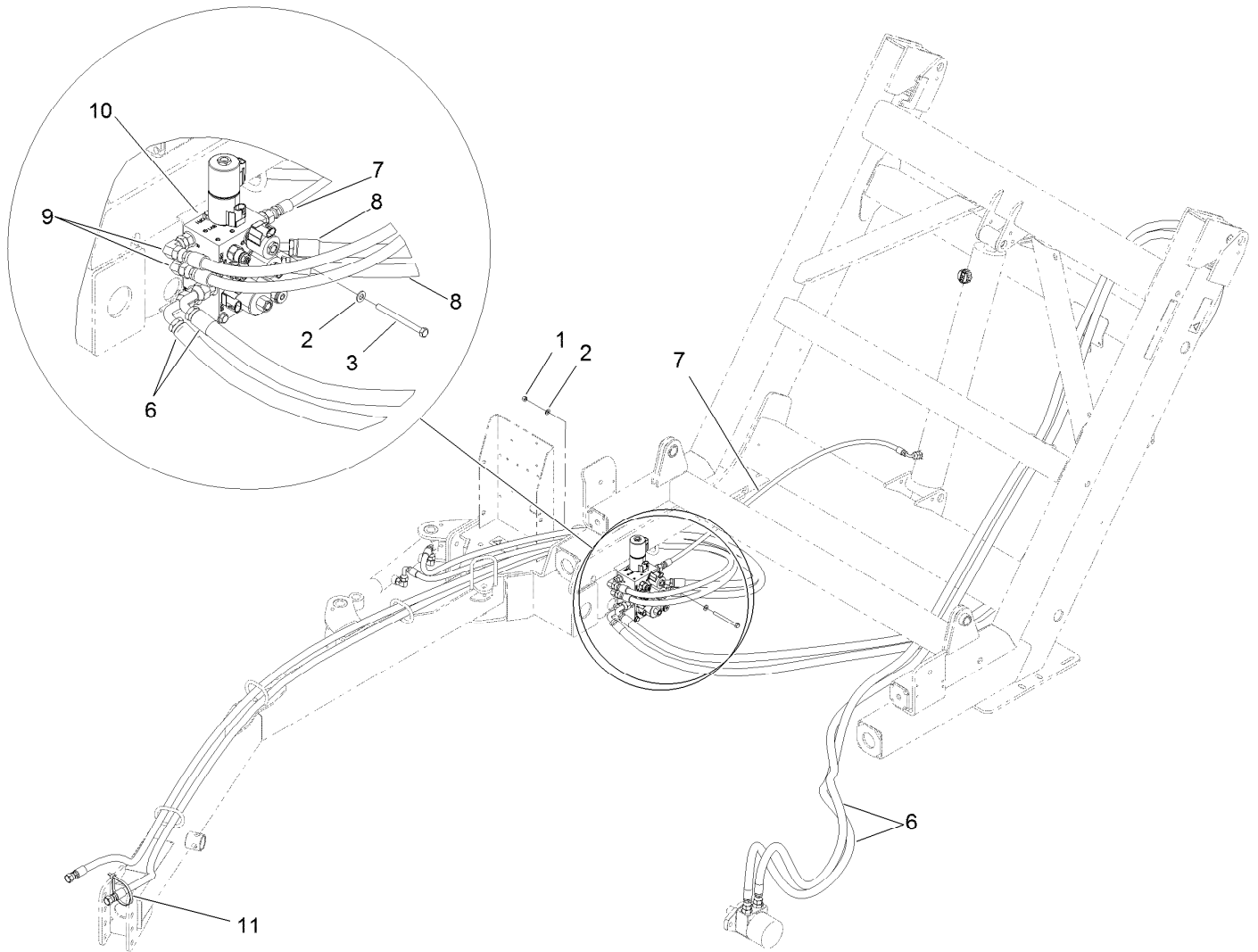
Hopper and Baffle Assembly

Ref.	Part Number	Qty.	Description
1	107-1272	1	Hopper-Dump
2	3256-24	24	Washer-Flat
3	104-8301	45	Nut-Flange, NI
4	107-1225-03	1	Baffle-Hopper
6	323-7	32	Screw-HH
7	107-1462-03	1	Plate-Side, Baffle LH
8	107-1442-03	1	Plate-Side, Baffle RH
9	323-6	8	Screw-HH
10	3256-35	24	Washer-Flat
11	115-9063-03	1	Support-Hopper
12	107-1454	1	Decal



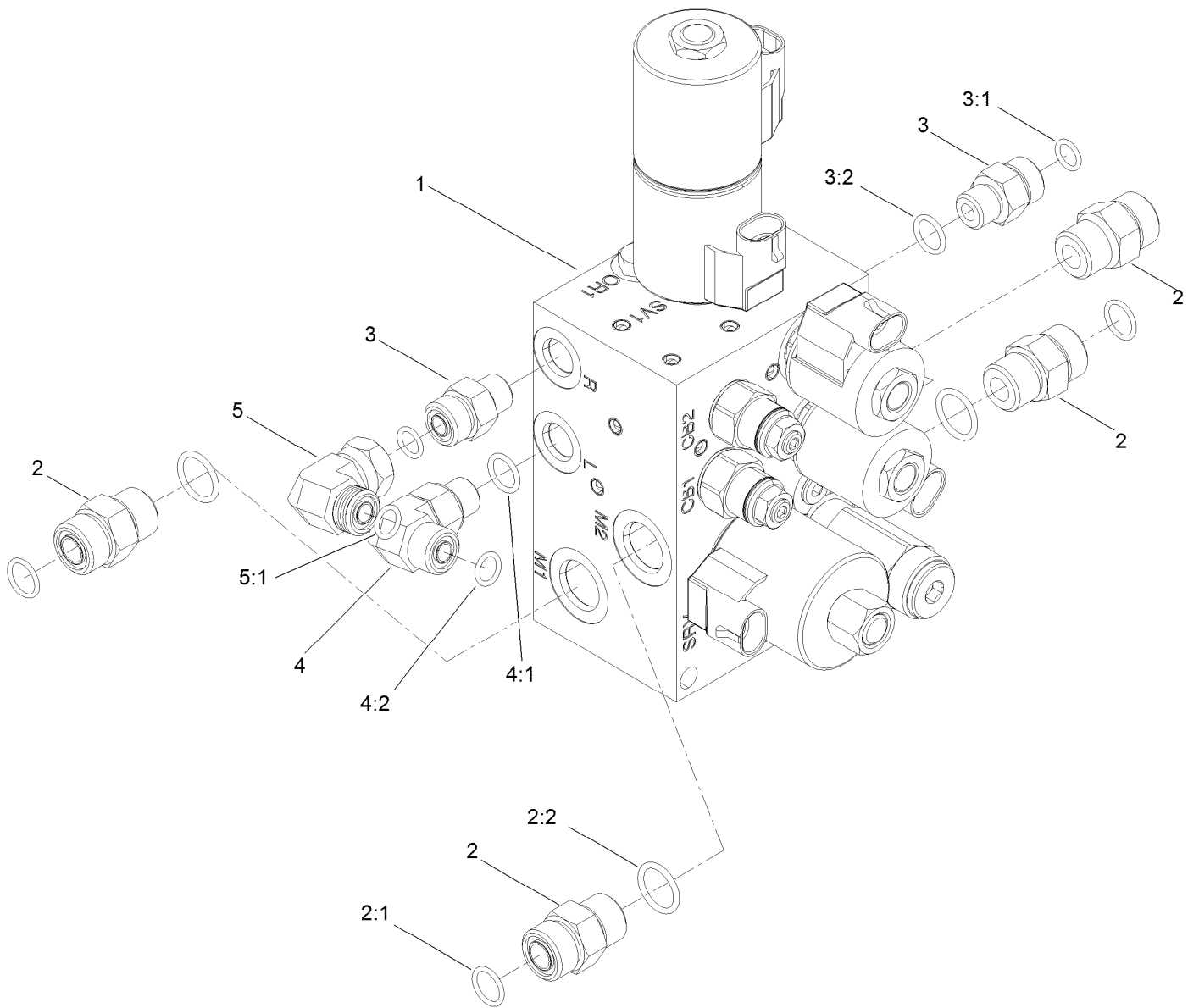
Hopper Lid and Baffle Assembly

Ref.	Part Number	Qty.	Description
1	108-0678-03	1	Plate-Baffle, Hopper
3	107-1273	1	Lid-Hopper
4	107-1549	6	Hinge-Half
5	107-1487-03	1	Door-Baffle
6	323-7	14	Screw-HH
7	104-8301	14	Nut-Flange, NI
8	3256-35	22	Washer-Flat
9	3229-2	12	Screw-CARR
10	3256-22	12	Washer-Flat
11	3296-42	12	Nut-Lock, NI
12	80-2570	3	Pin-Clevis
13	3290-307	3	Pin-Cotter



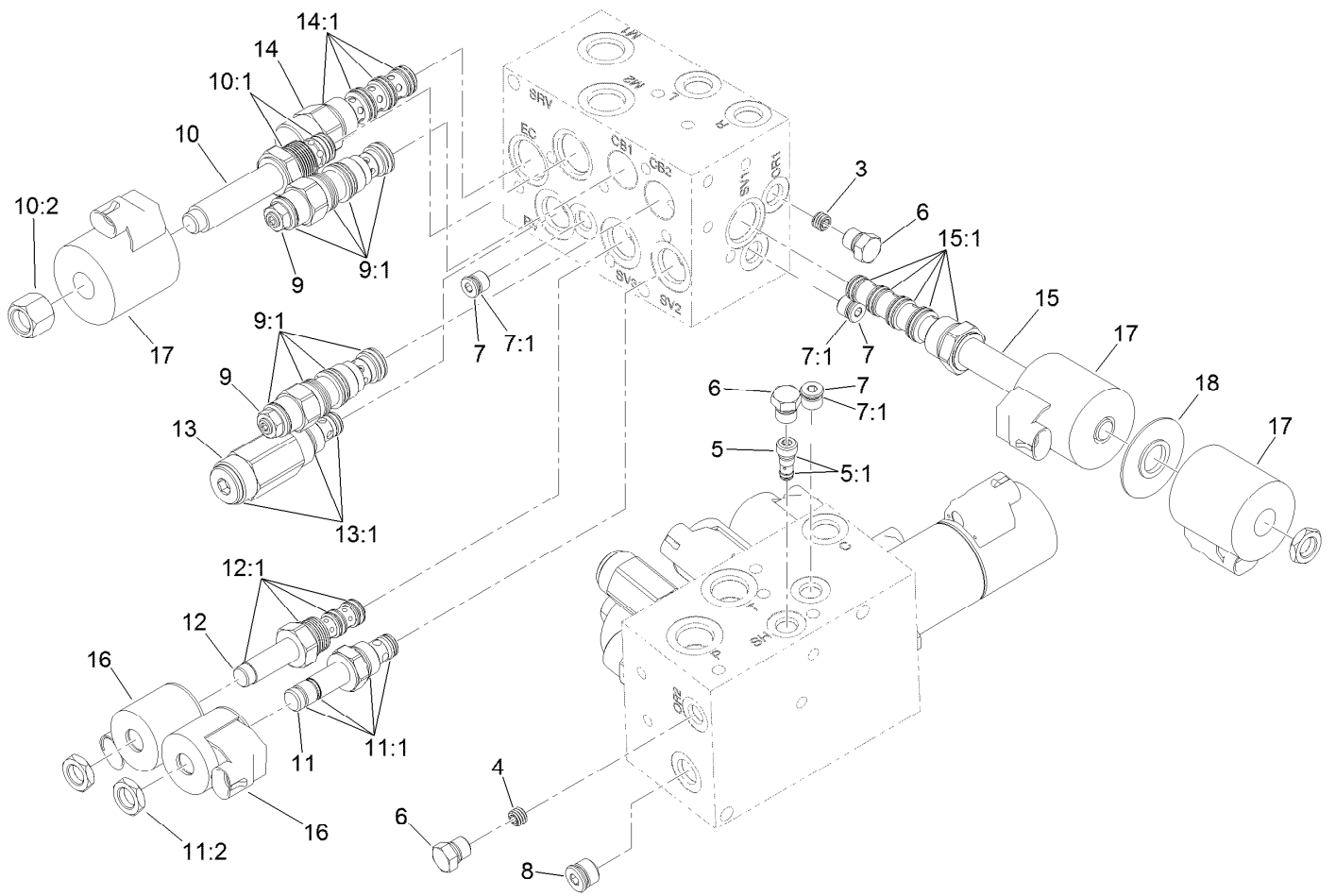
Hydraulic Manifold Valve and Hose Routing Assembly

<i>Ref.</i>	<i>Part Number</i>	<i>Qty.</i>	<i>Description</i>
1	3296-29	2	Nut-Lock, NI
2	3256-23	4	Washer-Flat
3	322-23	2	Screw-HH
6	107-1394	2	HYD Hose ASM
7	107-1396	1	HYD Hose ASM
8	107-1395	2	HYD Hose ASM
9	114-7702	2	HYD Hose ASM
10	117-8366	1	Hydraulic Manifold ASM
11	3334-945	1	Tie-Cable



Hydraulic Manifold Assembly

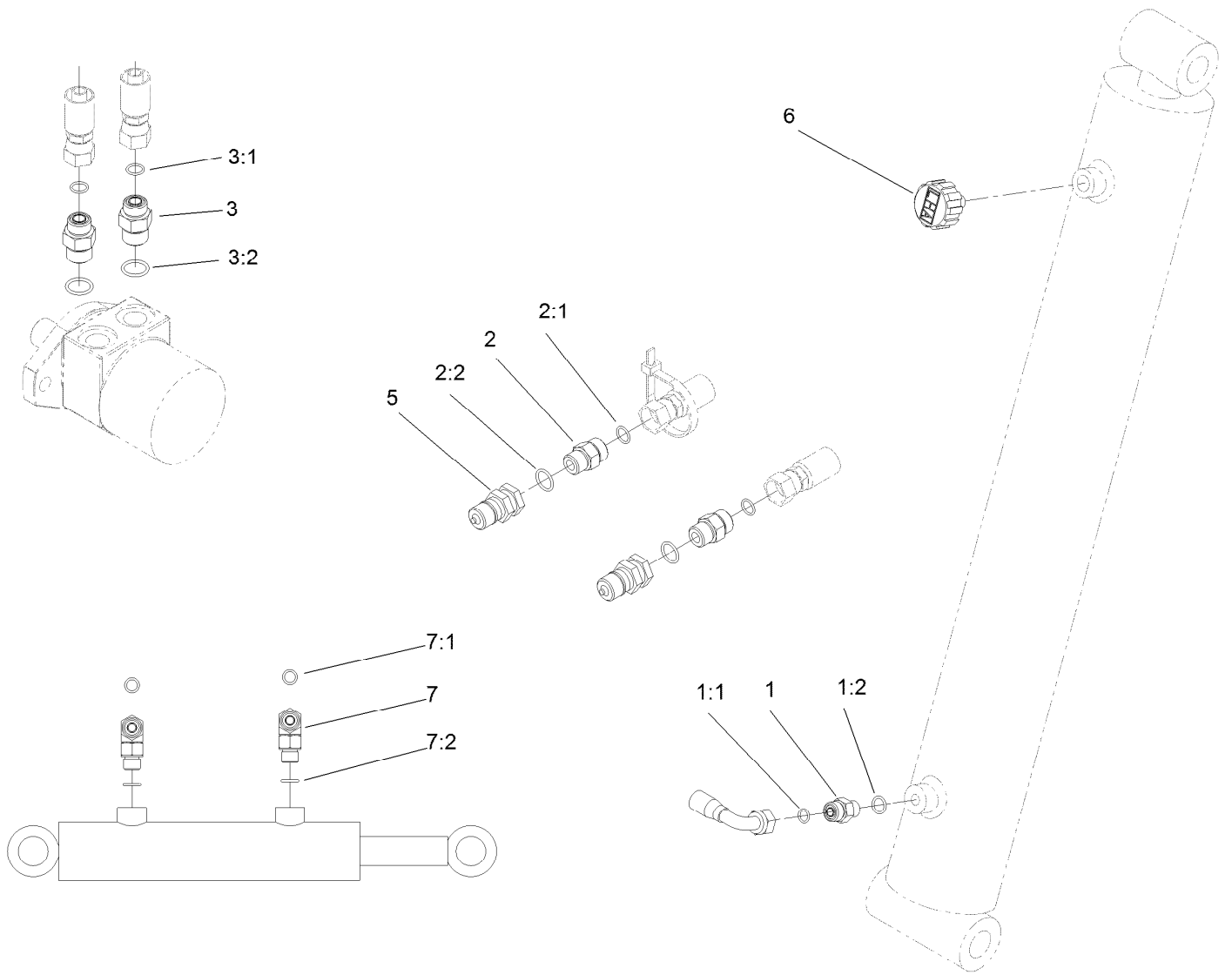
Ref.	Part Number	Qty.	Description
1	112-6752	1	Manifold-Hydraulic
2	340-4	4	Fitting-HYD, Straight
2:1	237-30	1	O-Ring
2:2	237-79	1	O-Ring
3	340-2	2	Fitting-HYD, Straight
3:1	237-22	1	O-Ring
3:2	237-42	1	O-Ring
4	340-77	1	Fitting-HYD, 90 DEG
4:1	237-22	1	O-Ring
4:2	237-42	1	O-Ring
5	340-159	1	Fitting-HYD, 90 DEG
5:1	237-22	2	O-Ring



Hydraulic Manifold Assembly No. 112-6752

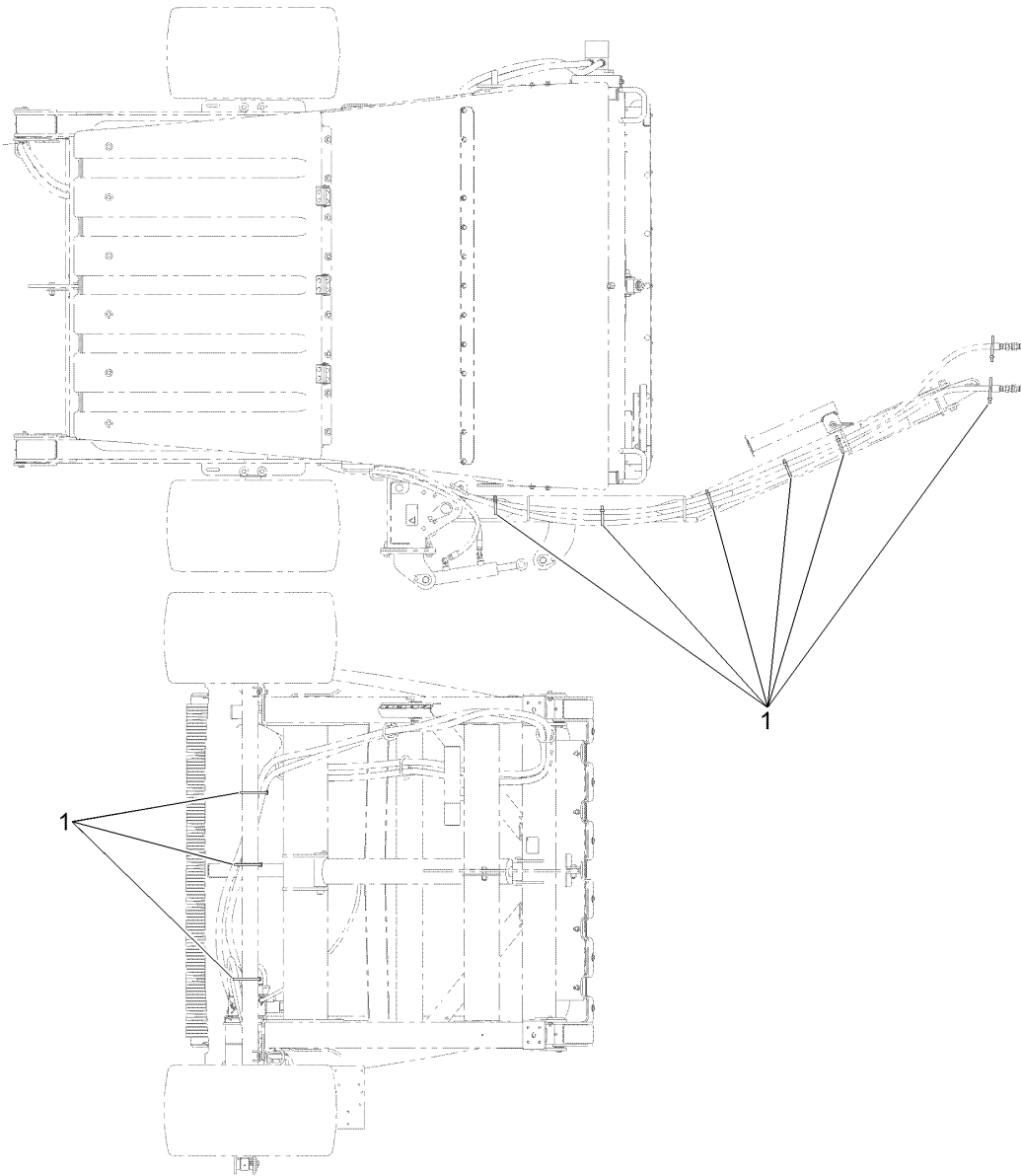
Ref.	Part Number	Qty.	Description	Ref.	Part Number	Qty.	Description
3	107-7525	1	Plug-Orifice, .050	11:1	105-9156	1	Seal Kit
4	112-9202	1	Orifice-Flow, Control (.060)	11:2	110-2634	1	Nut-Coil
5	117-8313	1	Shuttle-Load	12	106-1995	1	Valve-3 Way
5:1	117-7597	1	Seal Kit	12:1	110-8773	1	Seal Kit
6	117-0115	1	Plug-HYD	13	117-8312	1	Valve-Relief
7	353-990	1	Plug ASM	13:1	105-9156	1	Seal Kit
7:1	237-78	1	O-Ring	14	117-8314	1	Compensator-Pressure
8	106-1026	1	Plug-HYD	14:1	110-8908	1	Spool Valve Seal Kit
9	114-5082	2	Valve-Balance, Counter	15	117-8311	1	Valve-Solenoid
9:1	114-5083	1	Seal Kit	15:1	117-7596	1	Seal Kit
10	110-8768	1	Valve-Relief, Solenoid	16	105-9333	2	Coil-12Vdc
10:1	110-6316	1	Seal Kit ●	17	110-2630	3	Coil-12Vdc
10:2	110-2635	1	Nut-Coil	18	117-8316	1	Spacer-E Coil
11	107-7516	1	Solenoid Valve ASM				

● Not illustrated



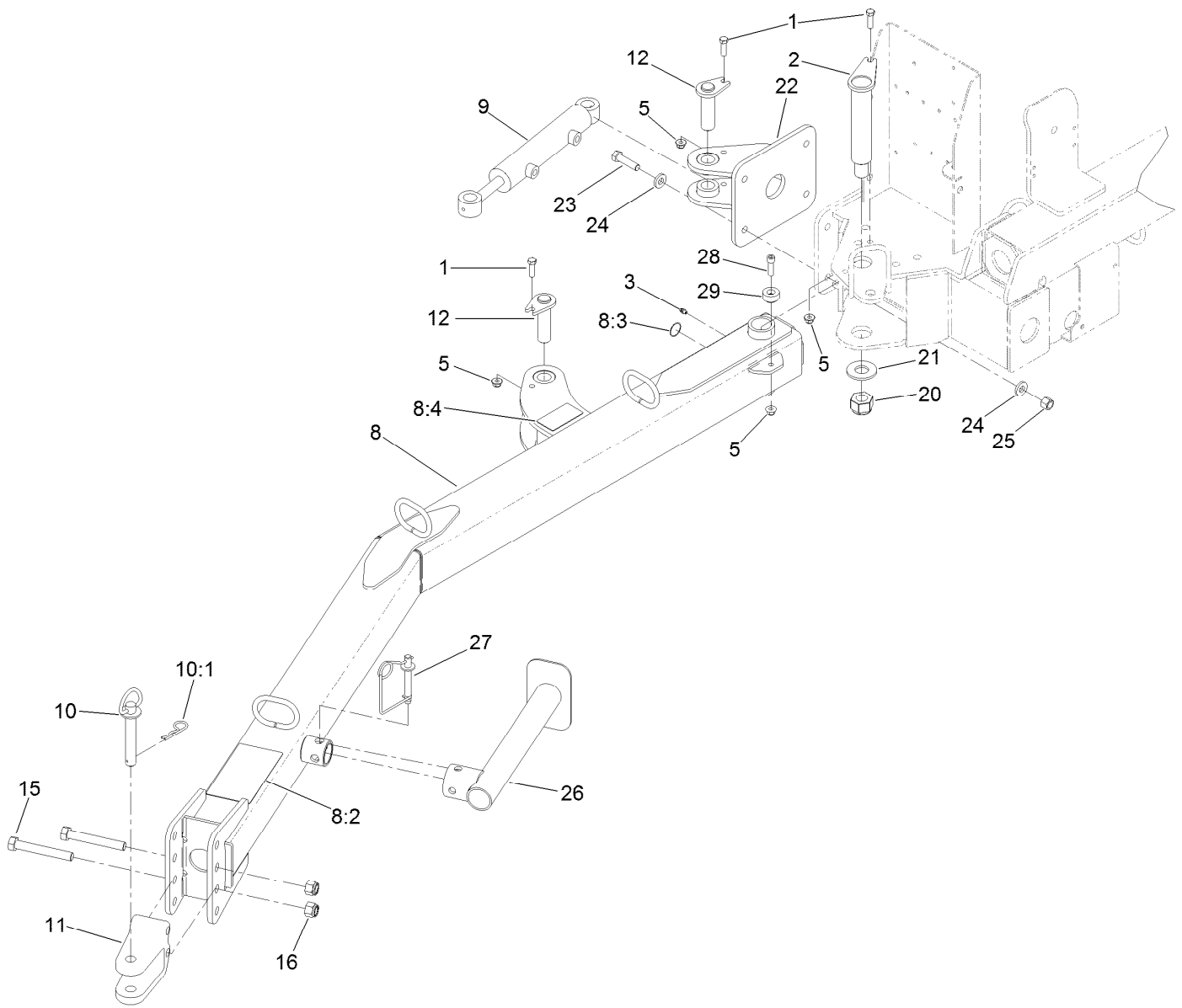
Hydraulic Fitting Assembly

Ref.	Part Number	Qty.	Description
1	107-1463	1	Fitting-Valve, Check
1:1	237-22	1	O-Ring
1:2	237-42	1	O-Ring
2	340-4	2	Fitting-HYD, Straight
2:1	237-30	1	O-Ring
2:2	237-79	1	O-Ring
3	340-6	2	Fitting-HYD, Straight
3:1	237-30	1	O-Ring
3:2	237-80	1	O-Ring
5	105-4170	2	Coupler-Male
6	68-6150	1	Breather
7	340-77	2	Fitting-HYD, 90 DEG
7:1	237-22	1	O-Ring
7:2	237-42	1	O-Ring



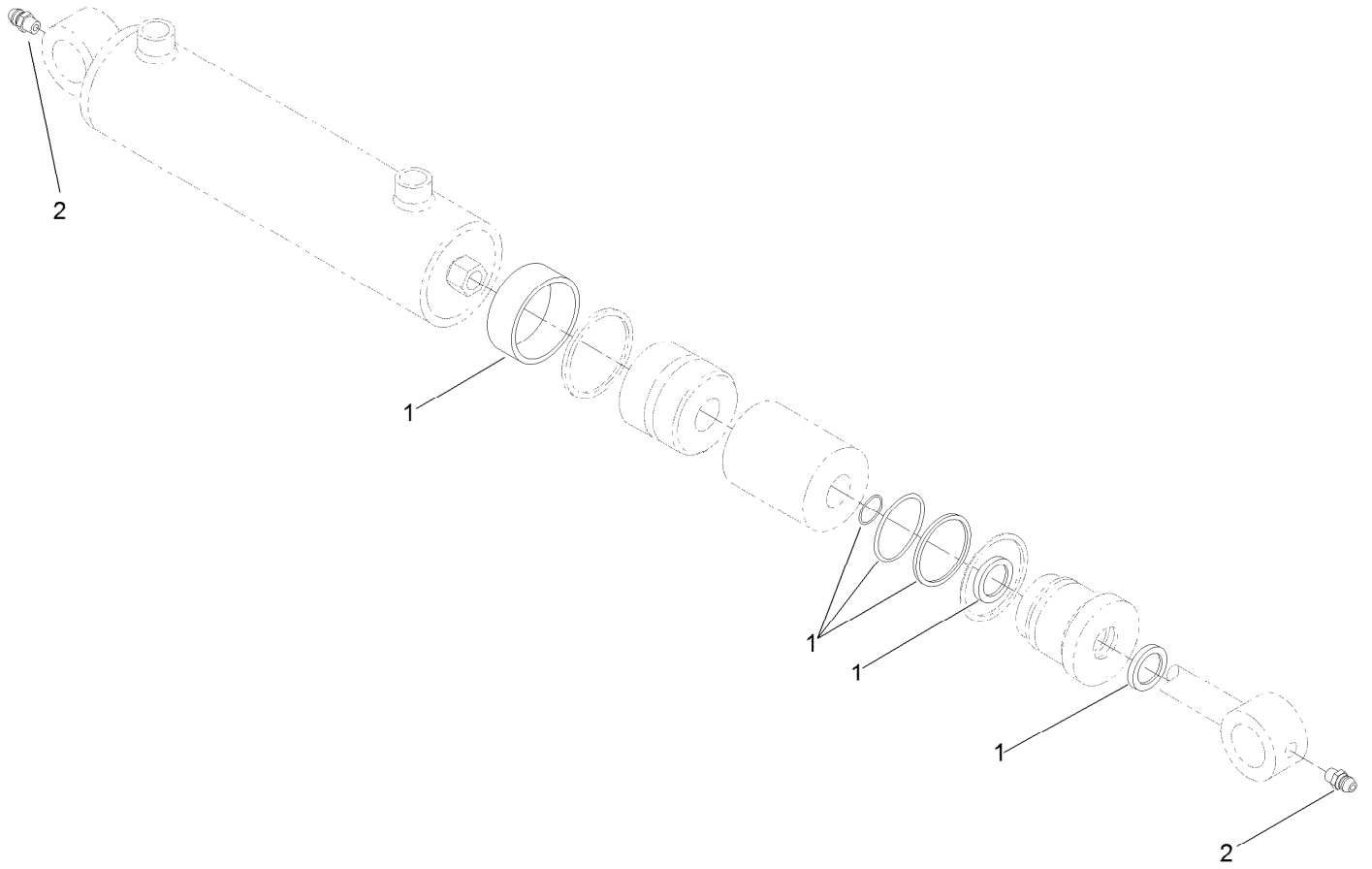
Cable Tie Assembly

<i>Ref.</i>	<i>Part Number</i>	<i>Qty.</i>	<i>Description</i>
1	3334-945	9	Tie-Cable



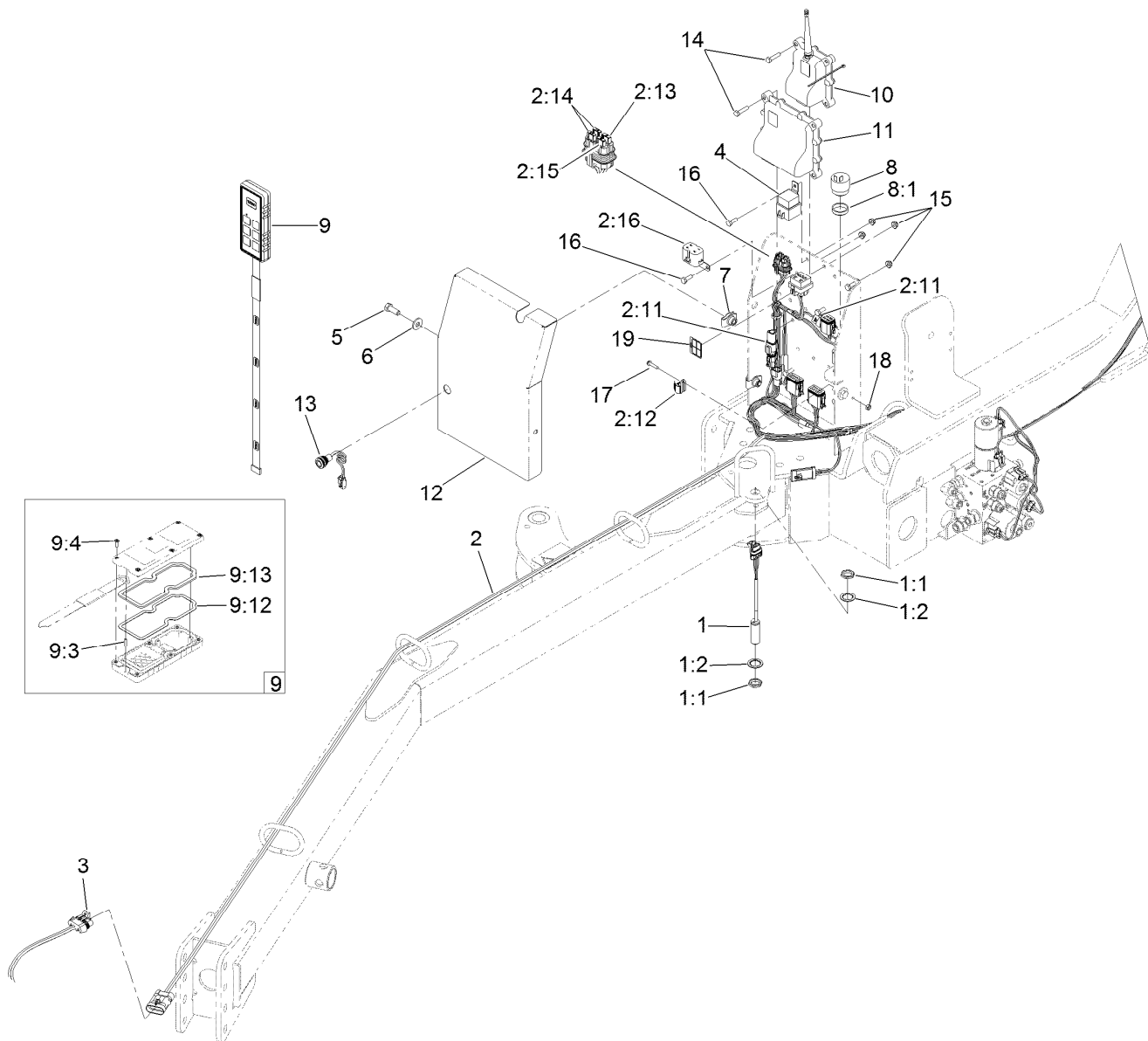
Tongue Assembly

Ref.	Part Number	Qty.	Description	Ref.	Part Number	Qty.	Description
1	323-7	3	Screw-HH	15	327-23	2	Screw-HH
2	115-2927	1	Pin ASM	16	3296-53	2	Nut-Lock, NI
3	302-5	1	Fitting-Grease	20	104-2024	1	Nut-Hex, NI
5	104-8301	4	Nut-Flange, NI	21	112-4953	1	Washer-Plain
8	115-8991	1	Tongue-Hitch	22	115-9010-01	1	Bracket ASM
8:2	108-0861	1	Decal-Danger, Sweeper	23	325-8	4	Screw-HH
8:3	58-6520	1	Decal-Grease	24	107-3395	8	Washer-Hardened
8:4	108-0866	1	Decal-Pinchpoint	25	3296-23	4	Nut-Lock, NI
9	115-8933	1	Hydraulic Cylinder ASM	26	117-8325-01	1	Stand ASM
10	13-6200	1	Pin-Hitch, Pointed	27	99-5610	1	Pin
10:1	3290-343	1	Pin-Hair	28	3274-1	1	Screw-HSH
11	47-3550	1	Hitch-Clevis	29	117-8533	1	Plate-Sensing
12	115-8934	2	Pin ASM				



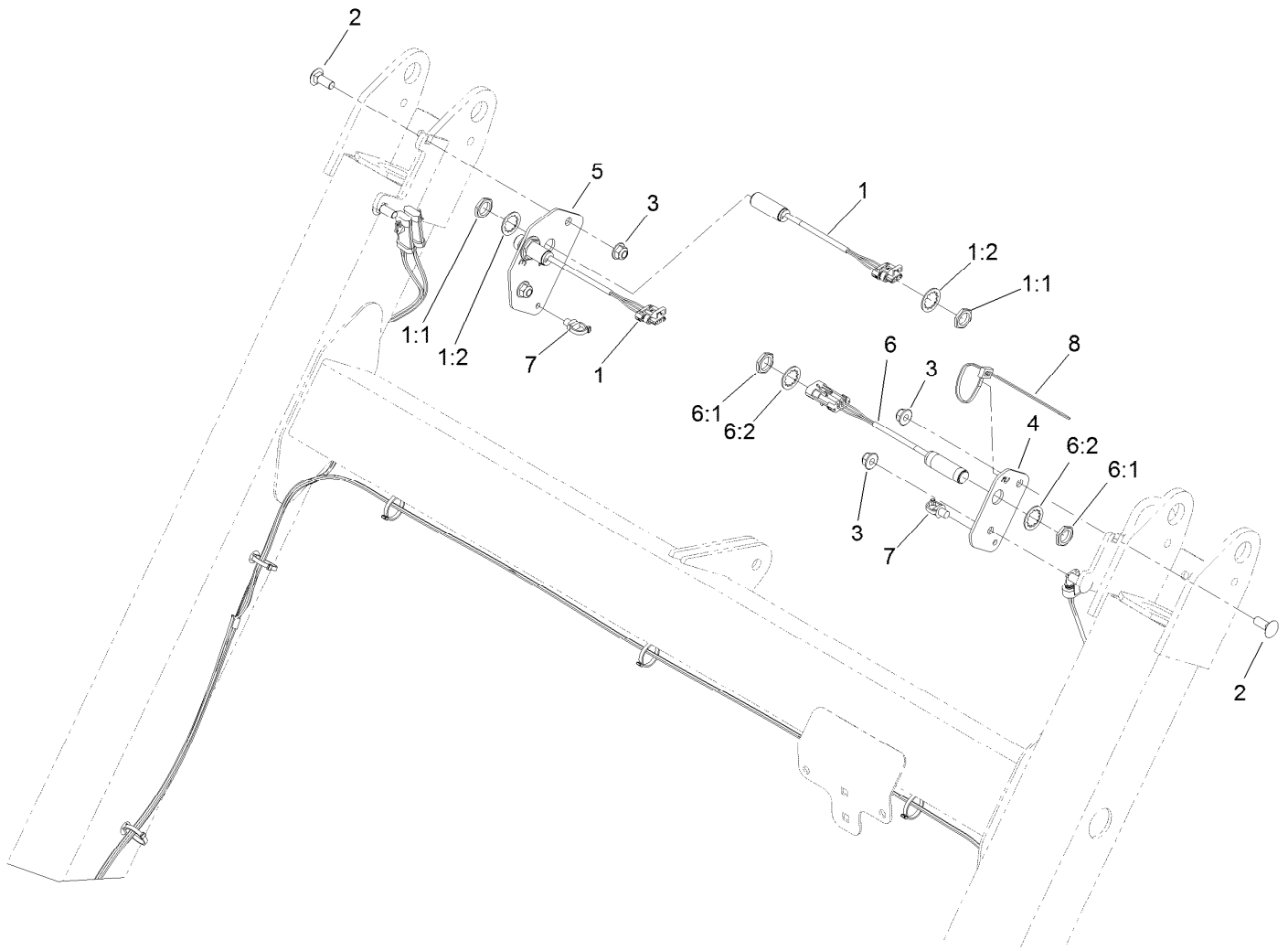
Hydraulic Cylinder Assembly No. 115-8933

<i>Ref.</i>	<i>Part Number</i>	<i>Qty.</i>	<i>Description</i>
1	107-1977	1	Seal Kit
2	302-5	2	Fitting-Grease



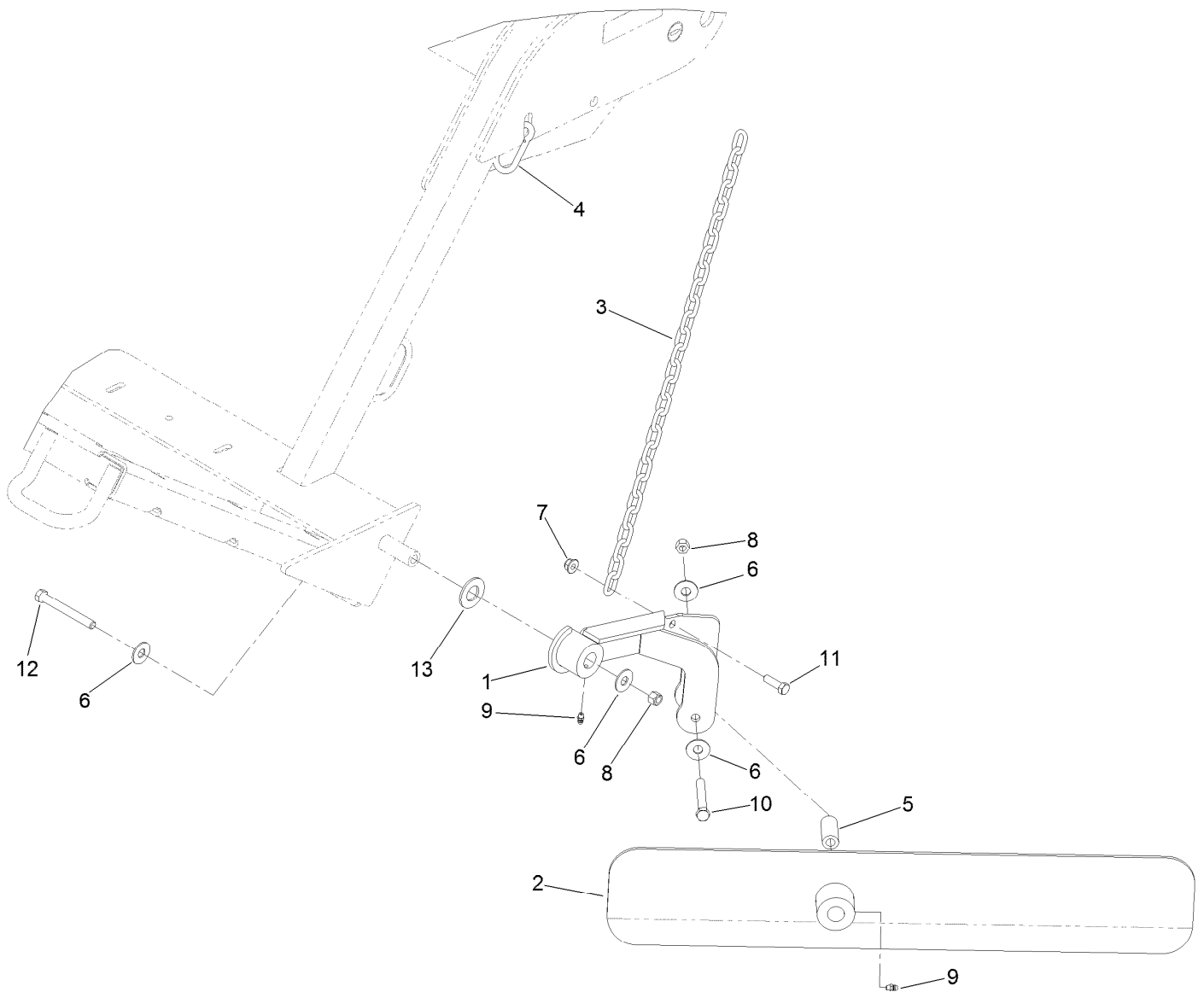
Electrical Assembly

Ref.	Part Number	Qty.	Description	Ref.	Part Number	Qty.	Description
1	115-5300	1	Proximity Switch ASM	8:1	104-5107	1	Nut-Plastic, Knurled
1:1	117-3207	2	Nut-Hex	9	125-1300	1	Remote ASM
1:2	117-3208	2	Washer-Lock, Internal Tooth	9:3	121-2906	1	Pin-Lanyard
2	122-0235	1	Harness-Wire	9:4	121-2908	6	Screw-PPH
2:11	32180-043	2	Resistor-120 Ohm	9:12	125-1294	1	Backer-Gasket
2:12	32180-089	1	Cap-Plug, 3 Way	9:13	125-1295	1	Gasket (HH-Small)
2:13	121-8861	1	Fuse-Mini Blade, 2 Amp	10	125-1230	1	Controller
2:14	121-8865	2	Fuse-Mini Blade, 7.5 Amp	11	125-1360	1	Controller
2:15	121-8867	1	Fuse-Mini Blade, 15 Amp	12	131-9359-01	1	Cover
2:16	32180-179	1	Cover-Bussman	13	122-0630	1	Lamp-Led, Red Indicator
3	115-8141	1	Harness-Wire	14	321-7	8	Screw-HH
4	99-7430	1	Relay	15	104-7201	11	Nut-Flange, NI
5	323-6	3	Screw-HH	16	321-4	3	Screw-HH
6	80-6990	3	Washer-Hardened	17	106-9169	1	Screw-HWH
7	105-4886	3	Nut-Tinnerman	18	3296-2	1	Nut-Lock, NI
8	80-9330	1	Audio Alarm ASM	19	131-6766	1	Decal-Fuses



Proximity Sensor System Assembly

Ref.	Part Number	Qty.	Description
1	115-5300	2	Proximity Switch ASM
1:1	117-3207	2	Nut-Hex
1:2	117-3208	2	Washer-Lock, Internal Tooth
2	3231-2	4	Bolt-CARR
3	104-8301	4	Nut-Flange, NI
4	131-9352-01	1	Plate-Switch, LH
5	131-9351-01	1	Plate-Switch, RH
6	115-0282	1	Proximity Sensor ASM
6:1	117-3207	2	Nut-Hex
6:2	117-3208	2	Washer-Lock, Internal Tooth
7	32180-030	2	Clip-Tie
8	3290-378	1	Tie-Cable



Windrow Assembly

Ref.	Part Number	Qty.	Description
1	107-1506-01	1	Arm ASM
2	108-0836-01	1	Windrow Blade ASM
3	SV139-00	1	Chain-Link
4	107-1507	1	Link-Snap
5	104-0958	1	Spacer-Windrow
6	3256-5	4	Washer-Flat
7	104-8301	1	Nut-Flange, NI
8	3296-48	2	Nut-Lock, NI
9	302-5	2	Fitting-Grease
10	324-13	1	Screw-HH
11	323-7	1	Screw-HH
12	324-26	1	Screw-HH
13	104-8076	1	Washer

Attachments and Accessories

For 07068 Pro Sweep Turf Sweeper

Product Name	Model/Part
Brake Kit	07086
Wheel Scraper Kit.....	107-1370
Slow-Moving Vehicle Sign Kit	107-1372
Wire Harness	115-8141
Sidewind Jack.....	T0000-3423

Notes:



Count on it.