



Count on it.

Parts Catalog

18in Walk-Behind Aerator

Model No. 23516—Serial No. 315000001 and Up

Model No. 33516—Serial No. 315000001 and Up



Ordering Replacement Parts

To order replacement parts, please supply the part number, the quantity, and the description of each part desired.

Understanding Reference Numbers

Each identified part in an illustration has a reference number. The reference number for a part also appears in the parts list, along with other information about the part.

This catalog uses two special reference number formats, one to indicate parts in a service assembly and another to indicate the quantity of a given part in an illustration.

Service Assembly Reference Numbers

Parts in service assemblies have reference numbers in the form a:b. The a represents the reference number of the entire service assembly and the b represents a sequential number unique to each part within the service assembly.

For example, a wheel assembly might be identified by reference number 6, the tire by 6:1, the valve by 6:2, and the wheel by 6:3. When you order the assembly identified by reference number 6, you receive all parts identified by reference numbers 6:1, 6:2, and 6:3. However, you may also order any part individually. Reference numbers of this type appear in illustration and in parts lists.

Reference Numbers Indicating Quantity

In an illustration, if a reference number indicates more than one part, the reference number has the form nX y. The n represents the quantity of the part, the X is the multiplication symbol, and the y represents the reference number.

For example, in an illustration, the reference number 2X 37 means that two of the parts identified by reference number 37 are indicated.

List of Abbreviations

AR: as required

ASM: assembly

BBC: blade brake control

BHTF: button head thread forming

CARR: carriage

CCW: counter clockwise

CW: clockwise

DEG: degrees

DPA: Dual Point Adjustment

ECM: electronic control module

EXT: external

FH: flat head

GA: gauge

HD: heavy-duty

HF: hex flange

HH: hex head

HHF: hex head flange

HHFTF: hex head flange thread forming

HJ: hex jam

HLH: hex lag head

HOC: height-of-cut

HP: high pressure

HSBH: hex socket button head

HSFH: hex socket flat head

HSH: hex socket head

HWH: hex washer head

HWHTF: hex washer head thread forming

HYD: hydraulic

LH: left hand

LP: low pressure

LPG: Liquefied Petroleum Gas

NI: nylon insert

NPTF: national pipe thread fine

PFH: phillips flat head

PPH: phillips pan head

PPHTF: phillips pan head thread forming

PRH: phillips round head

PTH: phillips truss head

PTO: power-take-off

RH: right hand

ROPS: roll-over protection system

RRB: rear roller brush

SFH: slotted fillister head

SHH: slotted hex head

SHWH: slotted hex washer head

SPH: slotted pan head

SQH: square head

SRH: slotted round head

STD: standard

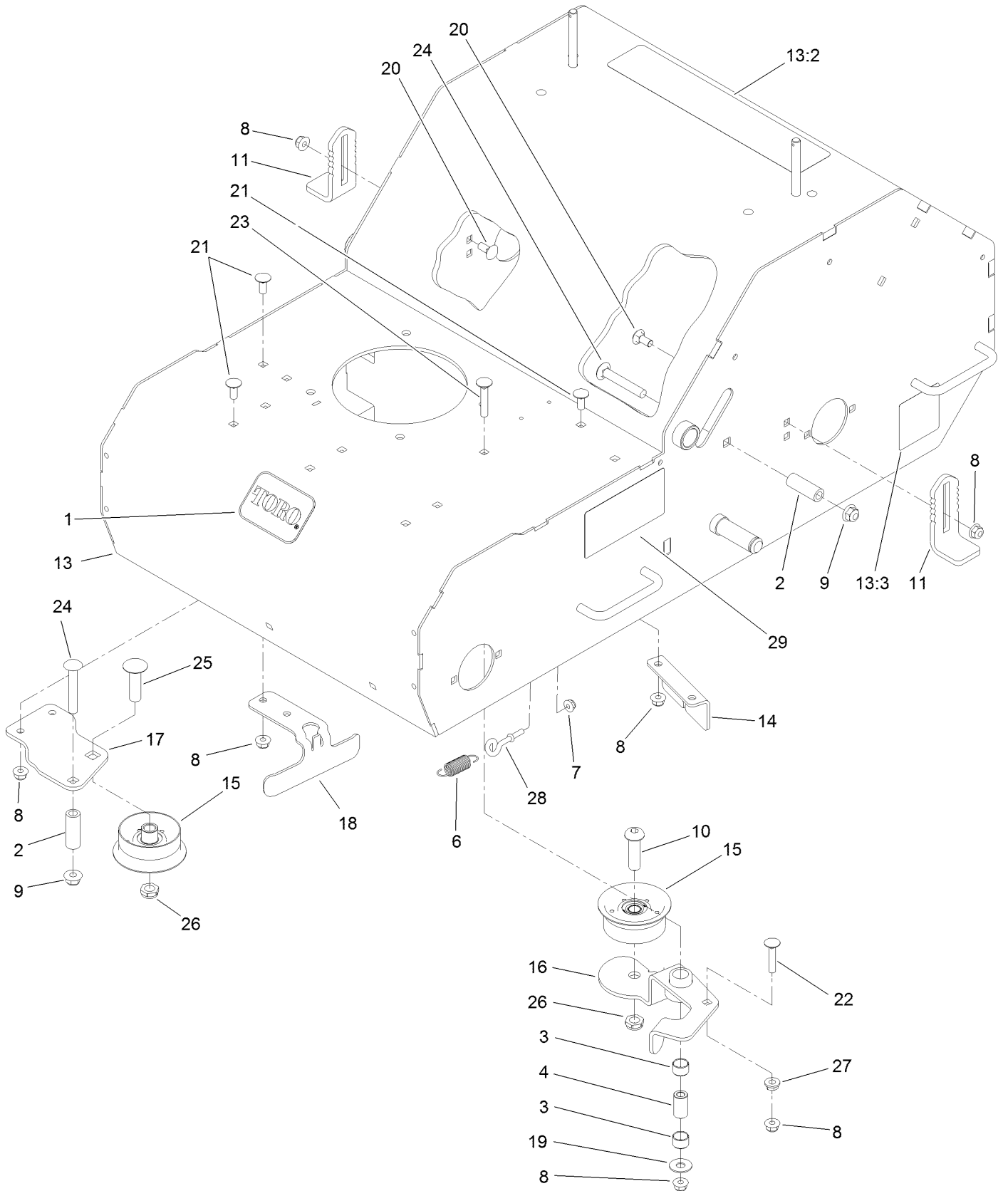
TAP: self tapping

TTH: torx truss head

Contents

Frame Assembly.....	4
Idler Sprocket and Weight Assembly.....	6
Engine Assembly.....	8
Transmission and Wheel Assembly.....	10
Handle Assembly.....	12
Wheel Assembly.....	14
Tine Wheel Assembly.....	16

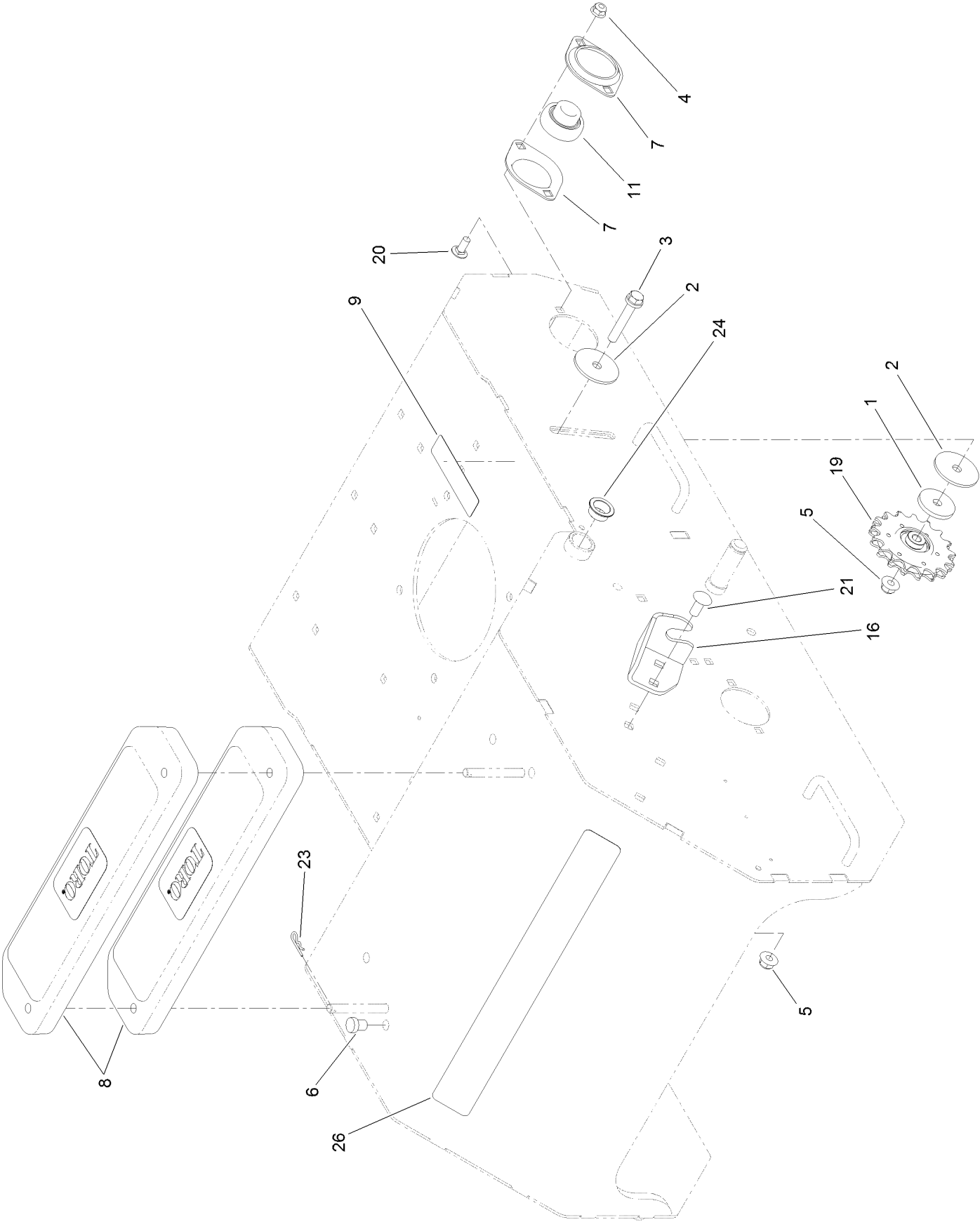
Frame Assembly



Frame Assembly (continued)

<i>Ref.</i>	<i>Part Number</i>	<i>Qty.</i>	<i>Description</i>	<i>Ref.</i>	<i>Part Number</i>	<i>Qty.</i>	<i>Description</i>
1	70-2200	1	Decal	16	130-2128-03	1	Arm-Idler
2	95-6448	3	Spacer	17	130-2131-03	1	Bracket-Mount, Pulley
3	103-6111	2	Bearing	18	130-2132-03	1	Guide-Belt
4	103-7108	1	Bushing-Arm, Idler	19	1126	1	Washer-Flat
6	104-0869	1	Spring-Brake	20	3230-1	4	Bolt-CARR
7	104-7201	1	Nut-Flange, NI	21	3230-23	6	Screw-CARR
8	104-8300	10	Nut-Flange, NI	22	3230-4	1	Screw-CARR
9	104-8301	3	Nut-Flange, NI	23	3230-5	1	Screw-CARR
10	108-1993	1	Screw-HSBH	24	3231-44	3	Screw-CARR
11	116-9886	2	Stop-Depth	25	3233-30	1	Screw-CARR
13	125-3855	1	Frame ASM	26	3296-45	2	Nut-Lock, NI
13:2	121-2009	1	Decal-Warning, Aerator	27	32128-20	1	Nut-HF
13:3	121-6150	2	Decal-Warning	28	611243	1	Bolt-Eye
14	125-3941-03	1	Bracket-Mount, Cable	29	130-2155	1	Decal-Lift Lock
15	127-4068	2	Pulley-Idler, Flat				

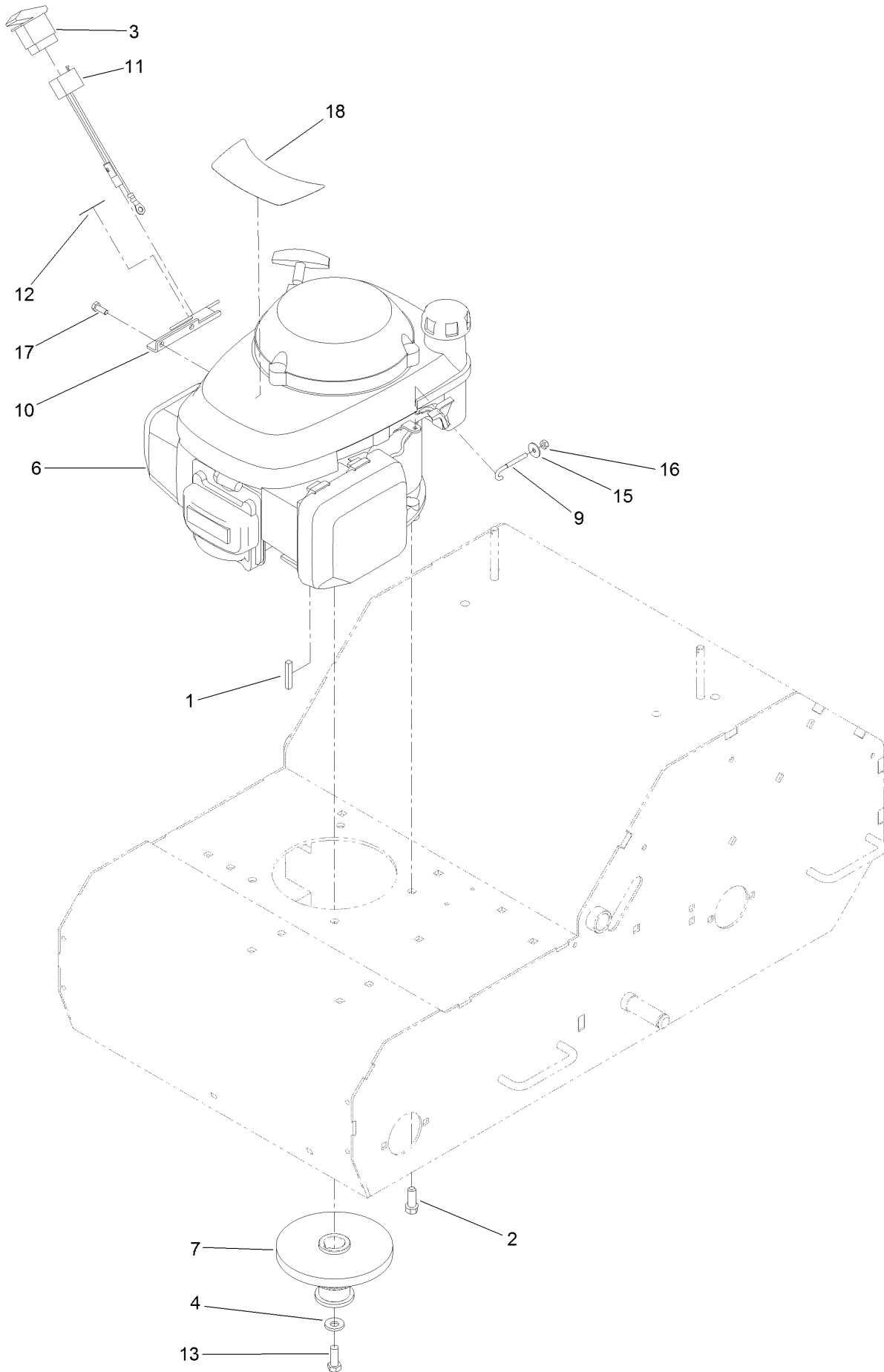
Idler Sprocket and Weight Assembly



Idler Sprocket and Weight Assembly (continued)

<i>Ref.</i>	<i>Part Number</i>	<i>Qty.</i>	<i>Description</i>	<i>Ref.</i>	<i>Part Number</i>	<i>Qty.</i>	<i>Description</i>
1	5-1720	1	Washer	11	106-8448	2	Bearing-Race, Extended
2	83-1040	2	Washer-Flat	16	130-2147	1	Bracket-Cable
3	100-2592	1	Screw-HHF	19	130-2114	1	Sprocket-Idler
4	104-8300	4	Nut-Flange, NI	20	3230-23	4	Screw-CARR
5	104-8301	4	Nut-Flange, NI	21	3231-27	2	Screw-CARR
6	105-4740	4	Bumper-Rubber	23	3290-307	2	Pin-Cotter
7	105-9714	4	Flange-Bearing	24	108519	2	Bushing-Bronze
8	112-7059-01	2	Weight-Cast	26	130-2161	1	Decal-Operation
9	117-2718	1	Decal-Arrester, Spark				

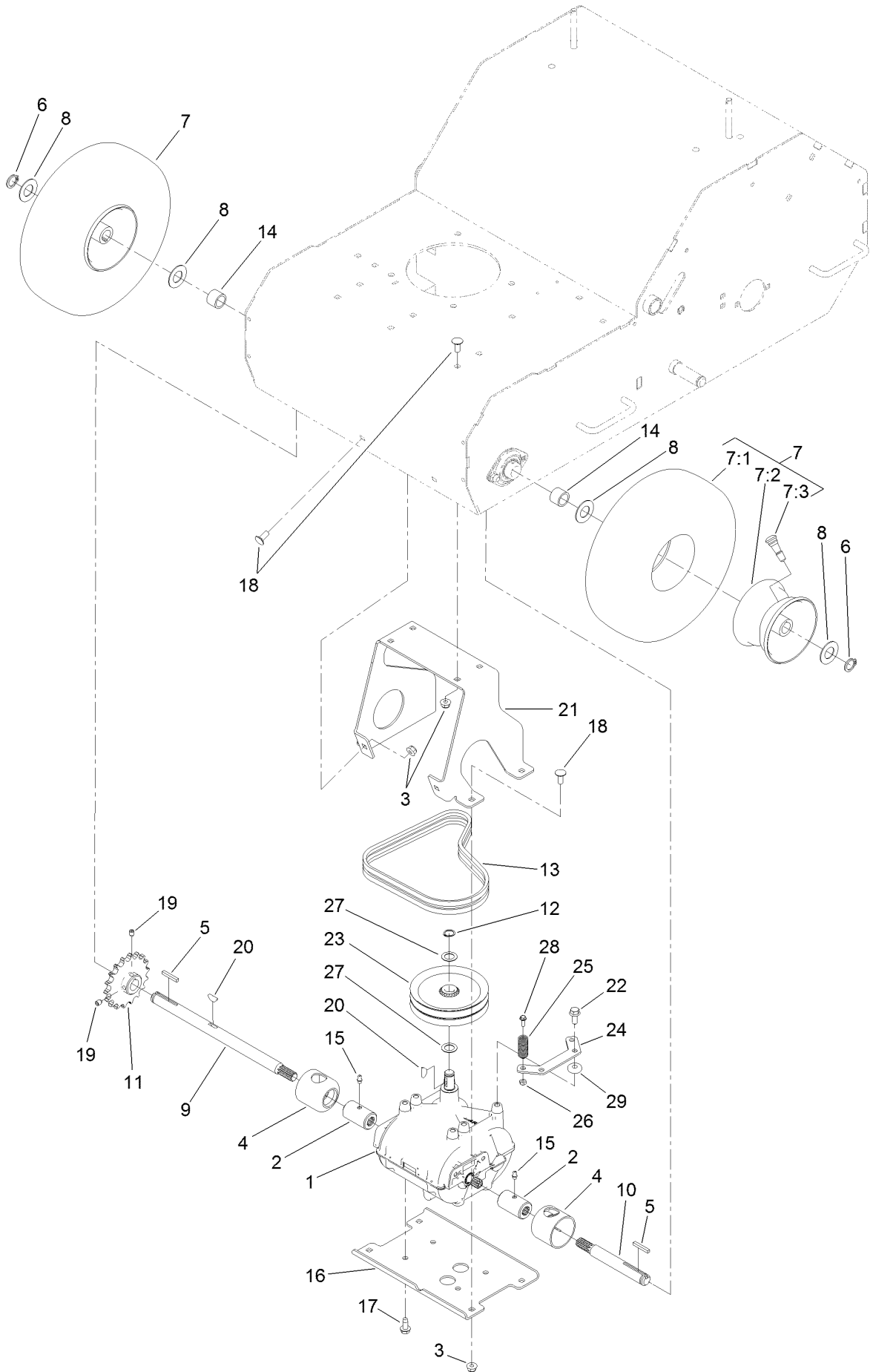
Engine Assembly



Engine Assembly (continued)

<i>Ref.</i>	<i>Part Number</i>	<i>Qty.</i>	<i>Description</i>	<i>Ref.</i>	<i>Part Number</i>	<i>Qty.</i>	<i>Description</i>
1	67-7490	1	Key-Square	10	121-6200-03	1	Bracket-Switch
2	95-1726	4	Screw-Taptite	11	121-6201	1	Harness-Wire
3	95-8999	1	Switch	12	121-6229	1	Decal-On/Off
4	98-5975	1	Washer-Belleville	13	3211-4	1	Screw-HH
6	112-8771	1	Engine-Honda, Gsv190La A3T	15	3256-61	1	Washer-Flat
7	127-4097	1	Pulley-Engine, Double	16	3296-2	1	Nut-Lock, NI
9	121-6186	1	Hook-Override	17	33113-016	2	Screw-HH
				18	117-5245	1	Decal-Engine

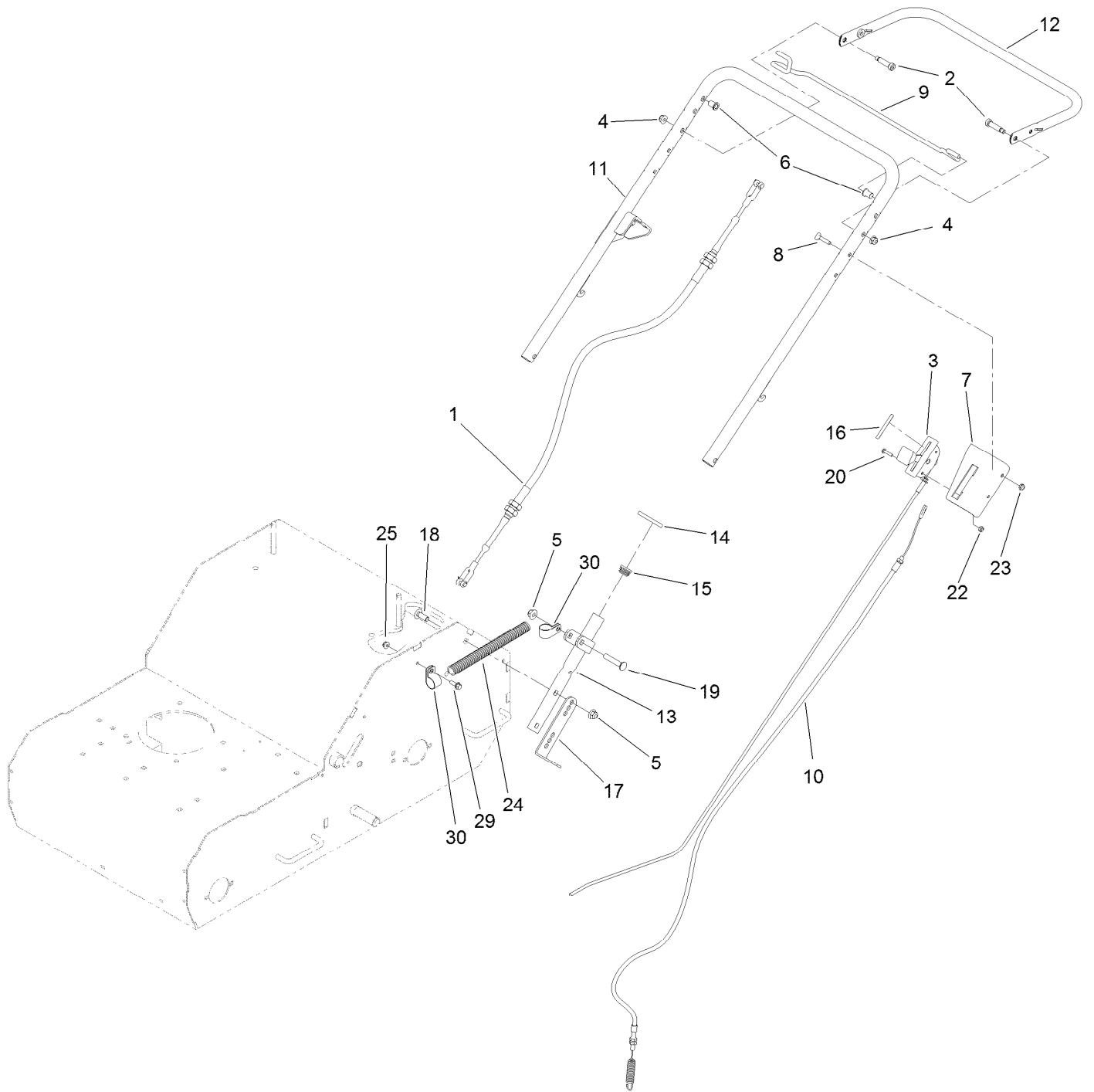
Transmission and Wheel Assembly



Transmission and Wheel Assembly (continued)

<i>Ref.</i>	<i>Part Number</i>	<i>Qty.</i>	<i>Description</i>	<i>Ref.</i>	<i>Part Number</i>	<i>Qty.</i>	<i>Description</i>
1	131-5740	1	Transmission-Gear	15	302-19	2	Fitting-Grease
2	1-323680	2	Coupler	16	125-3823-03	1	Mount-Transmission, Lower
3	104-8300	10	Nut-Flange, NI	17	9264964	4	Screw-HWH, Thread Cut
4	51-4220	2	Guard-Coupler	18	3230-23	10	Screw-CARR
5	92-2649	2	Key-Square	19	3246-3	2	Screw-HSH
6	32120-93	2	Ring-Retaining	20	3257-5	2	Key-Woodruff
7	120-3707	2	Wheel ASM	21	125-3938-03	1	Channel-Mount, Transmission
7:1	121-6081	1	Tire	22	3234-47	2	Screw-HHF
7:2	120-3706	1	Wheel-Rim	23	127-4003	1	Sheave
7:3	5108	1	Valve	24	130-2105-03	1	Guide-Spring, Mount
8	3256-39	4	Washer-Flat	25	127-4077	2	Spring-Retainer
9	121-4878	1	Shaft-Transmission	26	3296-2	2	Nut-Lock, NI
10	121-4879	1	Shaft-Transmission	27	108-0015	2	Washer-Flat
11	130-2115	1	Sprocket	28	32105-23	2	Screw
12	32120-64	1	Ring-Snap, External	29	115-5118	2	Washer
13	130-2142	1	Belt-V, Matched Pair				
14	83-0730	2	Spacer-Lockup				

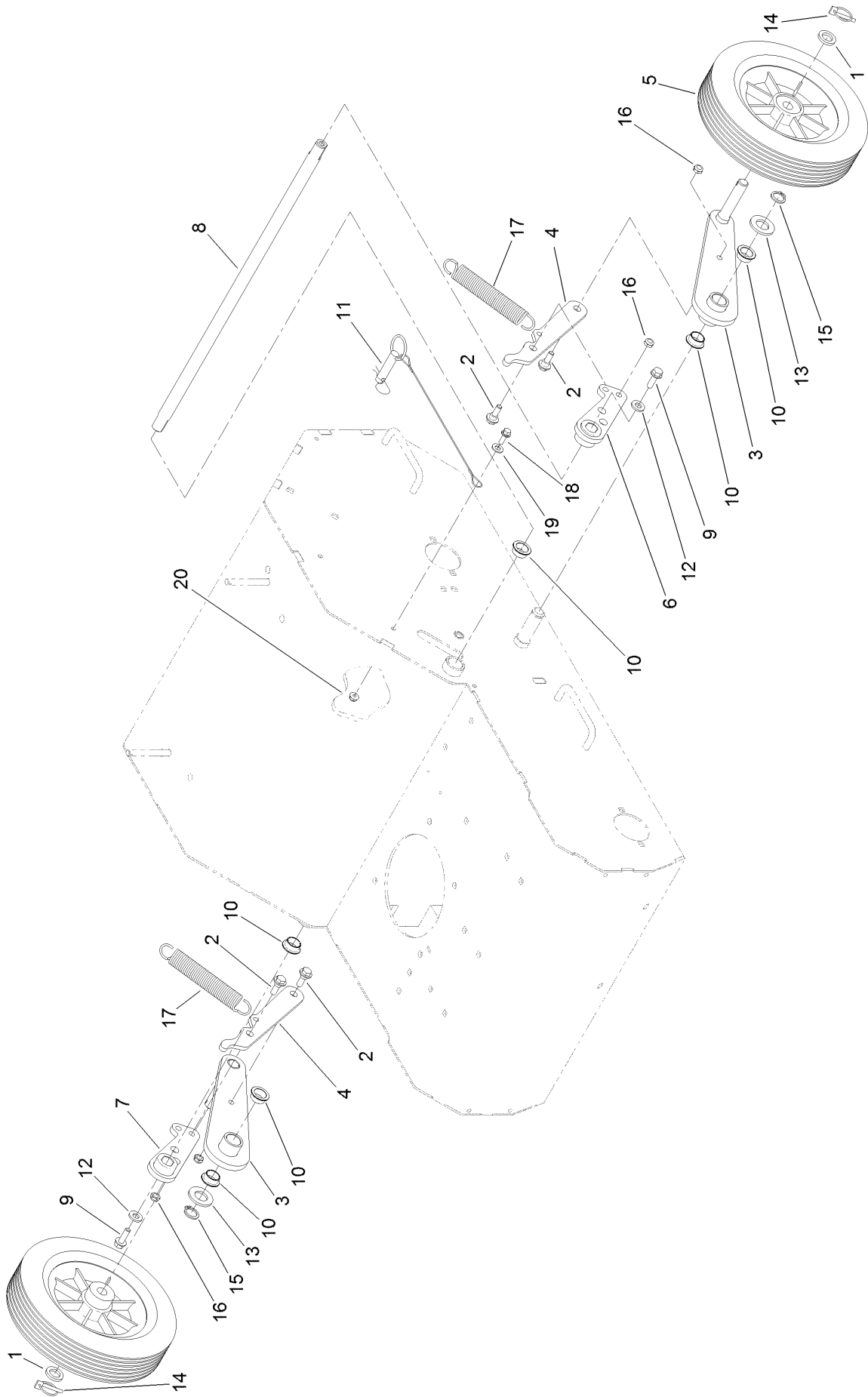
Handle Assembly



Handle Assembly (continued)

<i>Ref.</i>	<i>Part Number</i>	<i>Qty.</i>	<i>Description</i>	<i>Ref.</i>	<i>Part Number</i>	<i>Qty.</i>	<i>Description</i>
1	130-2160	1	Cable-Push/Pull	14	121-6202	2	Ring-Handle Lock
2	65-9340	2	Bolt-Shoulder	15	121-4870	2	Plug
3	130-2136	1	Control-Throttle	16	121-6222	1	Decal-Throttle/Choke
4	104-8300	2	Nut-Flange, NI	17	130-2150-03	2	Spring-Post
5	104-8301	6	Nut-Flange, NI	18	3231-22	4	Screw-CARR
6	109-2713	2	Bushing	19	3231-6	2	Screw-CARR
7	127-4058-03	1	Bracket-Throttle	20	106-9169	2	Screw-HWH
8	109-8144	3	Bolt-Handle	22	3296-2	2	Nut-Lock, NI
9	130-2130	1	Bail-Traction	23	3296-56	2	Nut-Lock, NI
10	121-4860	1	Cable-Idler	24	121-5799	1	Conduit-Convuluted
11	121-4862-03	1	Handle	25	104-7201	1	Nut-Flange, NI
12	130-2102-03	1	Handle-Lift	29	3234-4	1	Screw-HHF
13	121-4866-03	2	Mount-Handle	30	2412-41	2	Clamp

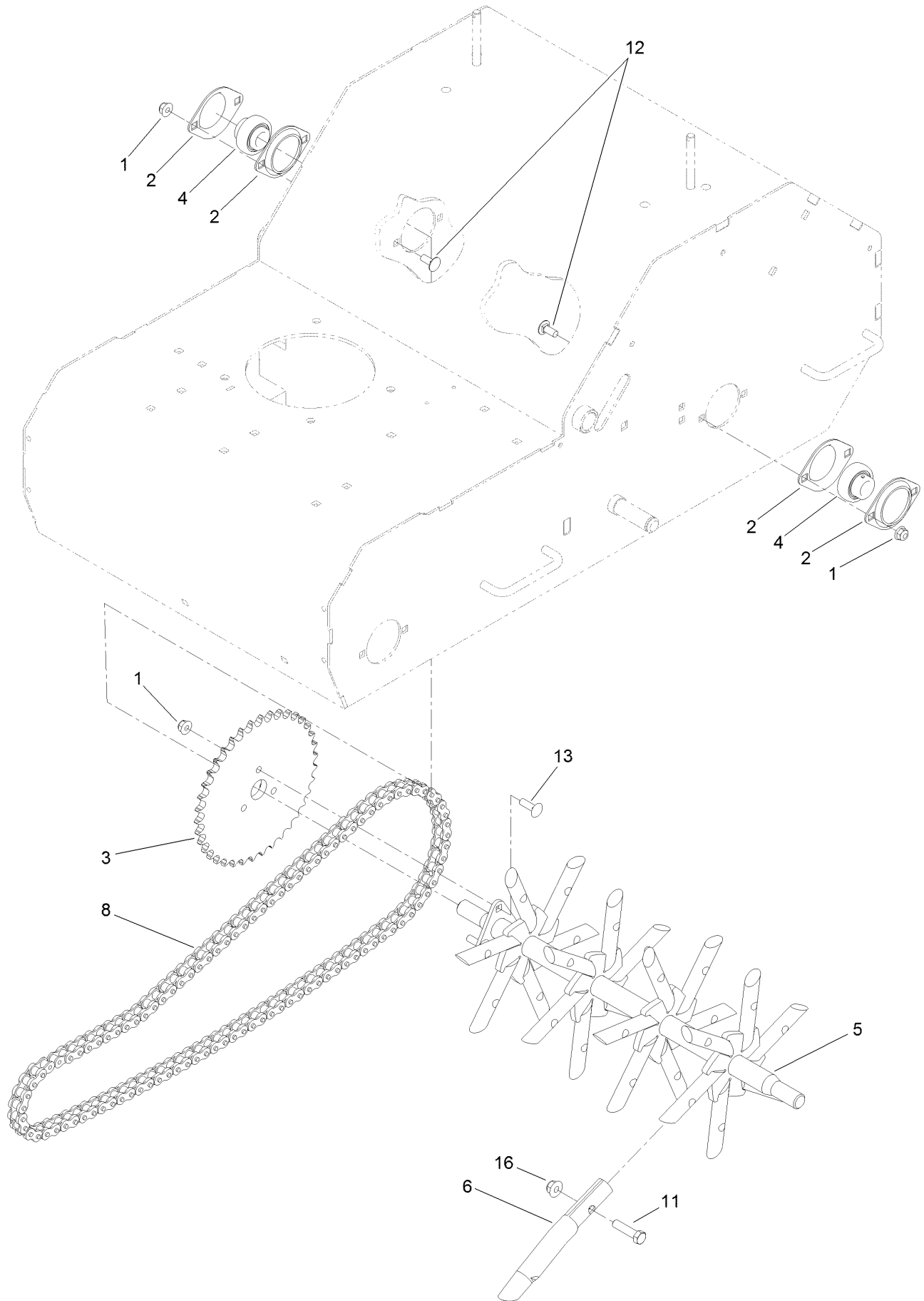
Wheel Assembly



Wheel Assembly (continued)

<i>Ref.</i>	<i>Part Number</i>	<i>Qty.</i>	<i>Description</i>	<i>Ref.</i>	<i>Part Number</i>	<i>Qty.</i>	<i>Description</i>
1	63-9710	2	Spacer-Bearing	11	106-9951	1	Hitch Pin ASM
2	116-2670	4	Screw-Shoulder	12	100-4852	2	Washer-Hardened
3	121-4886-03	2	Arm-Wheel	13	3256-28	2	Washer-Flat
4	130-2148-03	2	Link-Connecting, Pinned	14	3290-495	2	Pin-Klik
5	120-3560	2	Wheel-10 Inch	15	32120-93	2	Ring-Retaining
6	130-2157-03	1	Hub-Lift, LH	16	3296-47	4	Nut-Lock, NI
7	130-2158-03	1	Hub-Lift, RH	17	125-3786	2	Spring-Extension
8	125-3856	1	Shaft-Pivot	18	3234-4	1	Screw-HHF
9	3234-17	2	Screw-HHF	19	3256-23	1	Washer-Flat
10	108519	4	Bushing-Bronze	20	104-7201	1	Nut-Flange, NI

Tine Wheel Assembly



Tine Wheel Assembly (continued)

<i>Ref.</i>	<i>Part Number</i>	<i>Qty.</i>	<i>Description</i>	<i>Ref.</i>	<i>Part Number</i>	<i>Qty.</i>	<i>Description</i>
1	104-8300	7	Nut-Flange, NI	8	130-2112	1	Chain
2	105-9714	4	Flange-Bearing	11	323-8	24	Screw-HH
3	130-2116	1	Sprocket	12	3230-23	4	Screw-CARR
4	106-8448	2	Bearing-Race, Extended	13	3230-22	3	Screw-CARR
5	125-3852-01	1	Wheel-Tine	16	104-8301	24	Nut-Flange, NI
6	126-2143	24	Tine-Coring (3/4 Inch)				

Notes:

Notes:



Count on it.