



Front Pivot Arm Kit

Heavy-Duty Recycler®/Rear Bagger Lawn Mower

Model No. 131-5304

Installation Instructions

▲ WARNING

CALIFORNIA Proposition 65 Warning

This product contains a chemical or chemicals known to the State of California to cause cancer, birth defects, or reproductive harm.

Important: Save all the parts that you remove from the machine in this procedure except the front pivot arm and the 2 Belleville washers.

1. Remove the flange nut and the wheel from the machine (Figure 1).

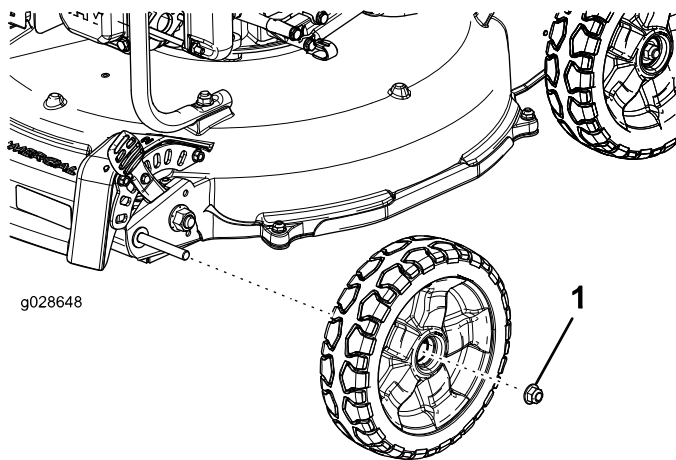


Figure 1

1. Flange nut

2. Remove the locknut that secures the spring arm and the front pivot arm to the machine (Figure 2).

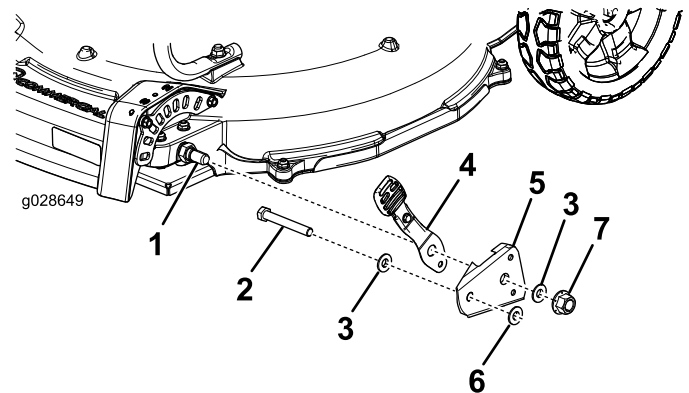


Figure 2

- | | |
|--------------------------------|------------------------------|
| 1. Axle | 5. Front pivot arm (discard) |
| 2. Bolt (3/8 x 2-3/4 inches) | 6. Wheel spacer |
| 3. Belleville washer (discard) | 7. Locknut |
| 4. Spring arm | |

3. Remove the wheel spacer, front pivot arm, spring arm, bolt (3/8 x 2-3/4 inches), and 2 Belleville washers (Figure 2).
4. Discard the front pivot arm and the 2 Belleville washers.
5. Install the bolt (3/8 x 2-3/4 inches) into the new front pivot arm from the inside as shown in Figure 3.



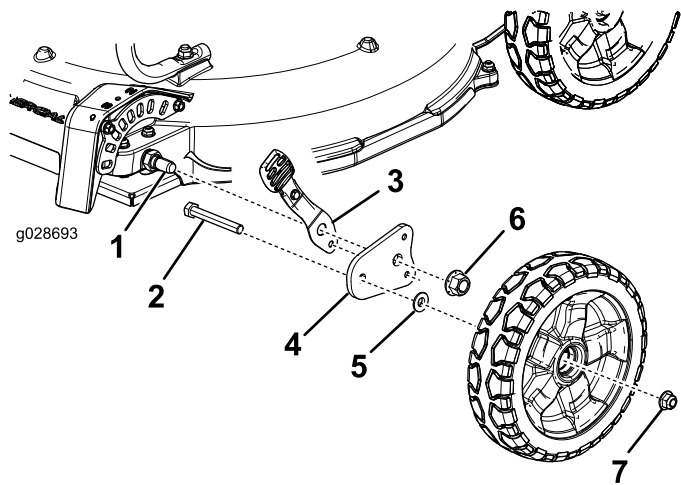


Figure 3

- | | |
|------------------------------|-----------------|
| 1. Axle | 5. Wheel spacer |
| 2. Bolt (3/8 x 2-3/4 inches) | 6. Locknut |
| 3. Spring arm | 7. Flange nut |
| 4. New front pivot arm | |

-
6. Install the spring arm and the new front pivot arm (with the bolt—3/8 x 2-3/4 inches) and secure them with the locknut (Figure 3).

Note: Torque the locknut to 68 to 81 N-m (50 to 60 ft-lb).

7. Install the wheel spacer and wheel onto the machine and secure them with the flange nut (Figure 3).

Note: Torque the flange nut to 28 to 45 N-m (250 to 400 in-lb).

8. Repeat this procedure for the other front wheel assembly.