



**Count on it.**

**Parts Catalog**

**Commercial Walk-Behind Mower  
16HP, T-Bar, Hydro Drive with 91cm TURBO  
FORCE® Cutting Unit**

Model No. 30071—Serial No. 315000001 and Up



# Ordering Replacement Parts

To order replacement parts, please supply the part number, the quantity, and the description of each part desired.

## Understanding Reference Numbers

Each identified part in an illustration has a reference number. The reference number for a part also appears in the parts list, along with other information about the part.

This catalog uses two special reference number formats, one to indicate parts in a service assembly and another to indicate the quantity of a given part in an illustration.

## Service Assembly Reference Numbers

Parts in service assemblies have reference numbers in the form a:b. The a represents the reference number of the entire service assembly and the b represents a sequential number unique to each part within the service assembly.

For example, a wheel assembly might be identified by reference number 6, the tire by 6:1, the valve by 6:2, and the wheel by 6:3. When you order the assembly identified by reference number 6, you receive all parts identified by reference numbers 6:1, 6:2, and 6:3. However, you may also order any part individually. Reference numbers of this type appear in illustration and in parts lists.

## Reference Numbers Indicating Quantity

In an illustration, if a reference number indicates more than one part, the reference number has the form nX y. The n represents the quantity of the part, the X is the multiplication symbol, and the y represents the reference number.

For example, in an illustration, the reference number 2X 37 means that two of the parts identified by reference number 37 are indicated.

# List of Abbreviations

**AR:** as required

**ASM:** assembly

**BBC:** blade brake control

**BHTF:** button head thread forming

**CARR:** carriage

**CCW:** counter clockwise

**CW:** clockwise

**DEG:** degrees

**DPA:** Dual Point Adjustment

**ECM:** electronic control module

**EXT:** external

**FH:** flat head

**GA:** gauge

**HD:** heavy-duty

**HF:** hex flange

**HH:** hex head

**HHF:** hex head flange

**HHFTF:** hex head flange thread forming

**HJ:** hex jam

**HLH:** hex lag head

**HOC:** height-of-cut

**HP:** high pressure

**HSBH:** hex socket button head

**HSFH:** hex socket flat head

**HSH:** hex socket head

**HWH:** hex washer head

**HWHTF:** hex washer head thread forming

**HYD:** hydraulic

**LH:** left hand

**LP:** low pressure

**LPG:** Liquefied Petroleum Gas

**NI:** nylon insert

**NPTF:** national pipe thread fine

**PFH:** phillips flat head

**PPH:** phillips pan head

**PPHTF:** phillips pan head thread forming

**PRH:** phillips round head

**PTH:** phillips truss head

**PTO:** power-take-off

**RH:** right hand

**ROPS:** roll-over protection system

**RRB:** rear roller brush

**SFH:** slotted fillister head

**SHH:** slotted hex head

**SHWH:** slotted hex washer head

**SPH:** slotted pan head

**SQH:** square head

**SRH:** slotted round head

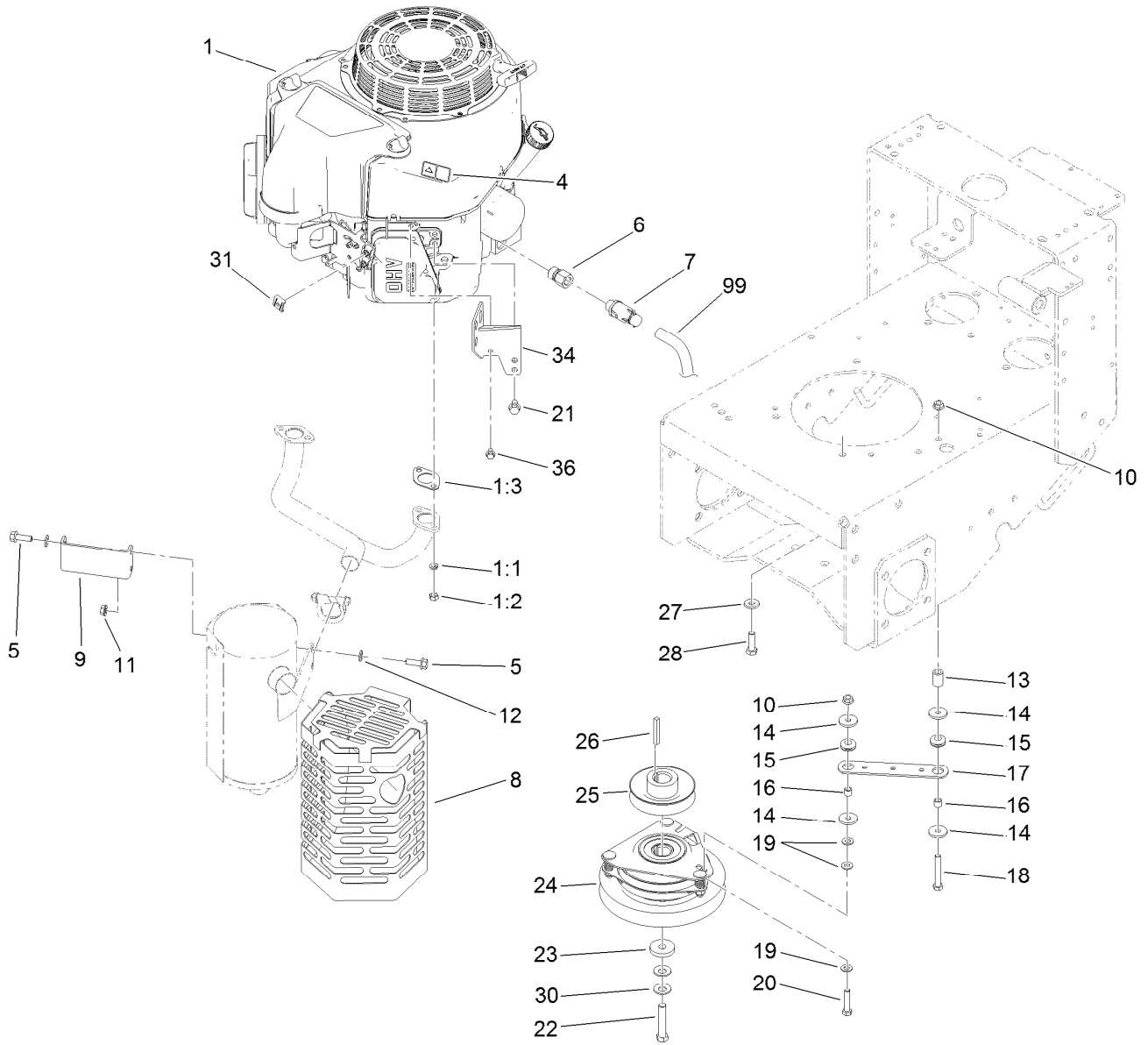
**STD:** standard

**TAP:** self tapping

**TTH:** torx truss head

# Contents

Engine and Clutch Assembly .....	4
Fuel System Assembly .....	5
Ground Drive Assembly .....	6
Hydraulic Motor Assembly No. 104-1171 .....	7
Hydraulic System Assembly .....	8
Hydraulic Pump Assembly No. 115-4480 .....	10
Hydraulic Pump Assembly No. 115-4481 .....	11
Hydraulic Hose Assembly .....	12
Upper Control Assembly .....	13
Control Panel Assembly .....	14
Electrical System Assembly .....	15
Parking Brake Assembly .....	16
Power-Take-Off Idler Assembly .....	17
Carrier Frame Assembly .....	18
Deck Drive and Baffle Assembly .....	19
Deck Decal Assembly No. 115-4230 .....	20
Spindle Assembly No. 110-6950 .....	21
Spindle Assembly No. 110-0728 .....	22
Deck Deflector, Roller and Cover Assembly .....	23
Deflector Assembly No. 110-0790 .....	24
Attachments and Accessories .....	25



## Engine and Clutch Assembly

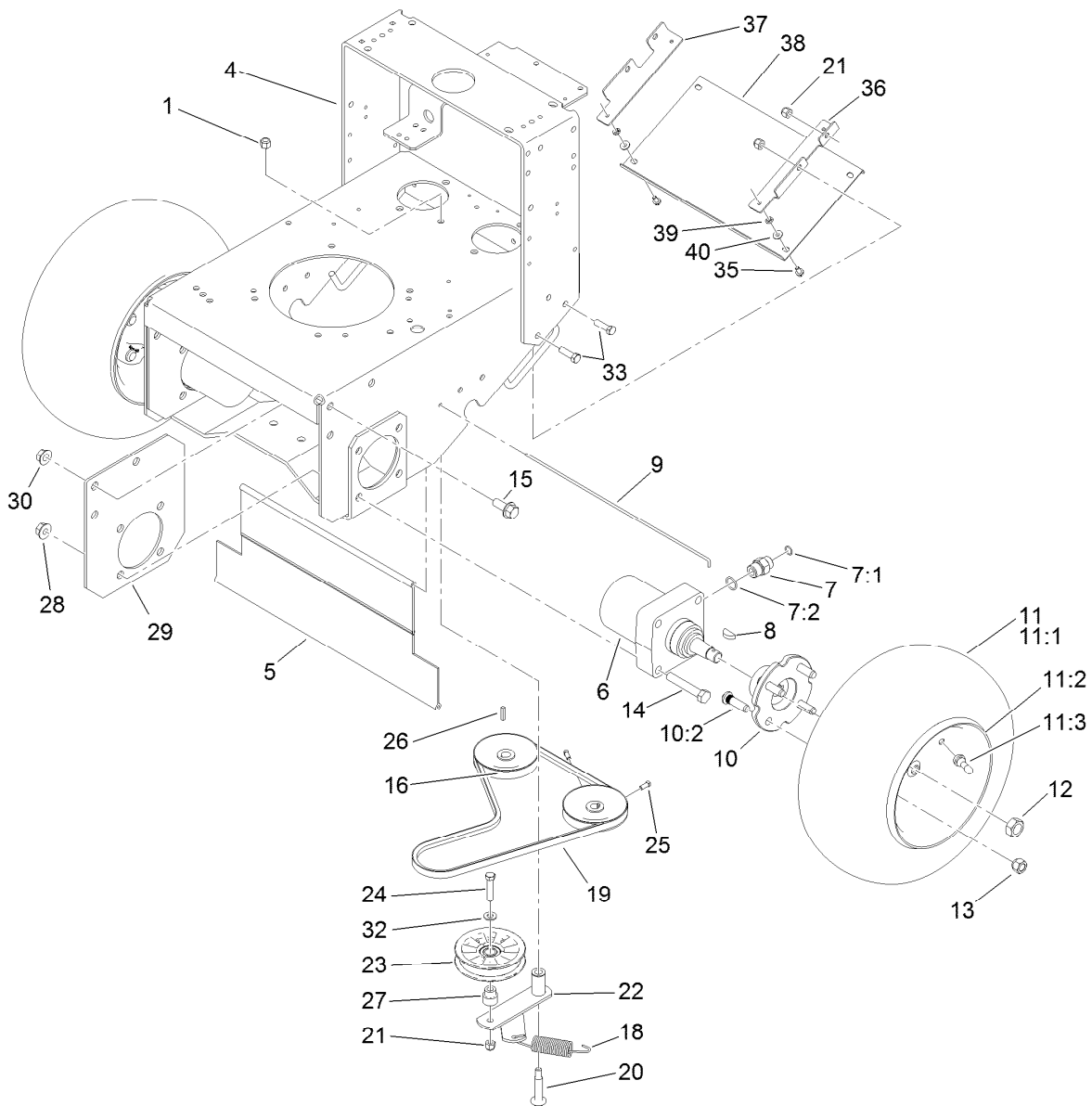
Ref.	Part Number	Qty.	Description
1		1	Engine-Kawasaki, Fs481V ●■
1:1	114-3550	4	Washer-Lock, Spring
1:2	114-3549	4	Nut
1:3	1-653313	2	Gasket-Exhaust
4	106-5517	1	Decal-Warning, Hot Surface
5	33104-025	4	Screw-HHF
6	103-1966	1	Adapter
7	120-4321	1	Valve-Drain, Oil
8	119-3629-03	1	Shield-Muffler
9	119-3635-03	1	Bracket-Shield, Muffler
10	32128-20	2	Nut-HF
11	117-1350	4	Nut-HF, Lock
12	1-303334	4	Washer-Spring
13	104-6373	1	Tube-Retainer
14	1-613235	4	Washer
15	1-633630	2	Grommet
16	1-633545	2	Spacer

Ref.	Part Number	Qty.	Description
17	1-633543-03	1	Strap-Clutch, Brake
18	322-11	1	Screw-HH
19	3256-23	3	Washer-Flat
20	322-7	1	Screw-HH
21	33104-016	2	Screw-HHF
22	3212-9	1	Screw-HH
23	107-4136	1	Washer
24	105-2635	1	Clutch / Brake ASM
25	44-5940	1	Pulley
26	608006	1	Key-Square
27	98-5975	4	Washer-Belleville
28	323-7	4	Screw-HH
30	1-603610	2	Washer-Spring
31	81-1690	1	Clamp-Cable
34	117-8561-03	1	Bracket-Muffler
36	33103-012	1	Screw-HHF
99	103-1964	1	Hose-Drain, Oil

● Not serviced separately

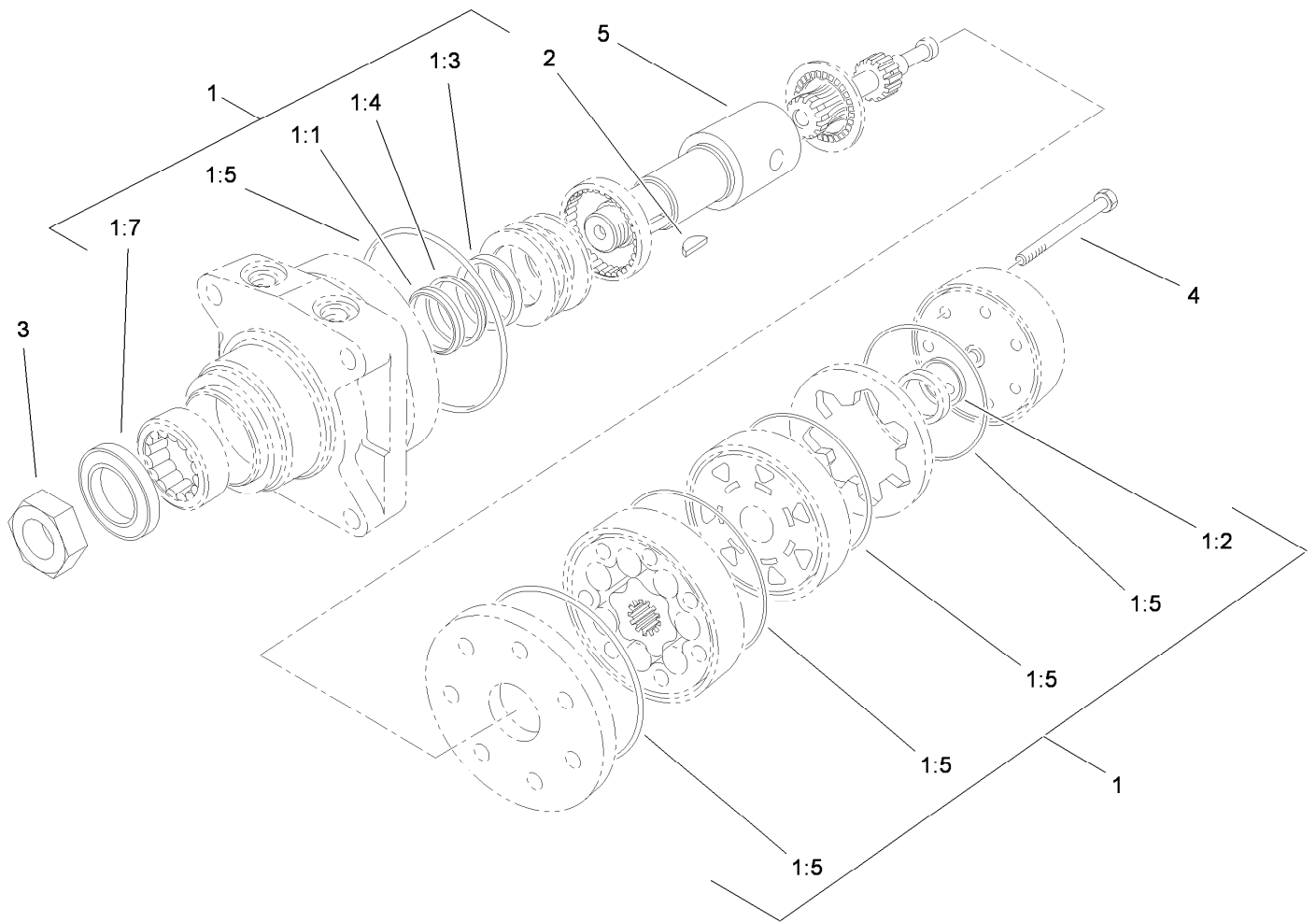
■ Obtain parts from [www.kawpowerpc.com](http://www.kawpowerpc.com)





## Ground Drive Assembly

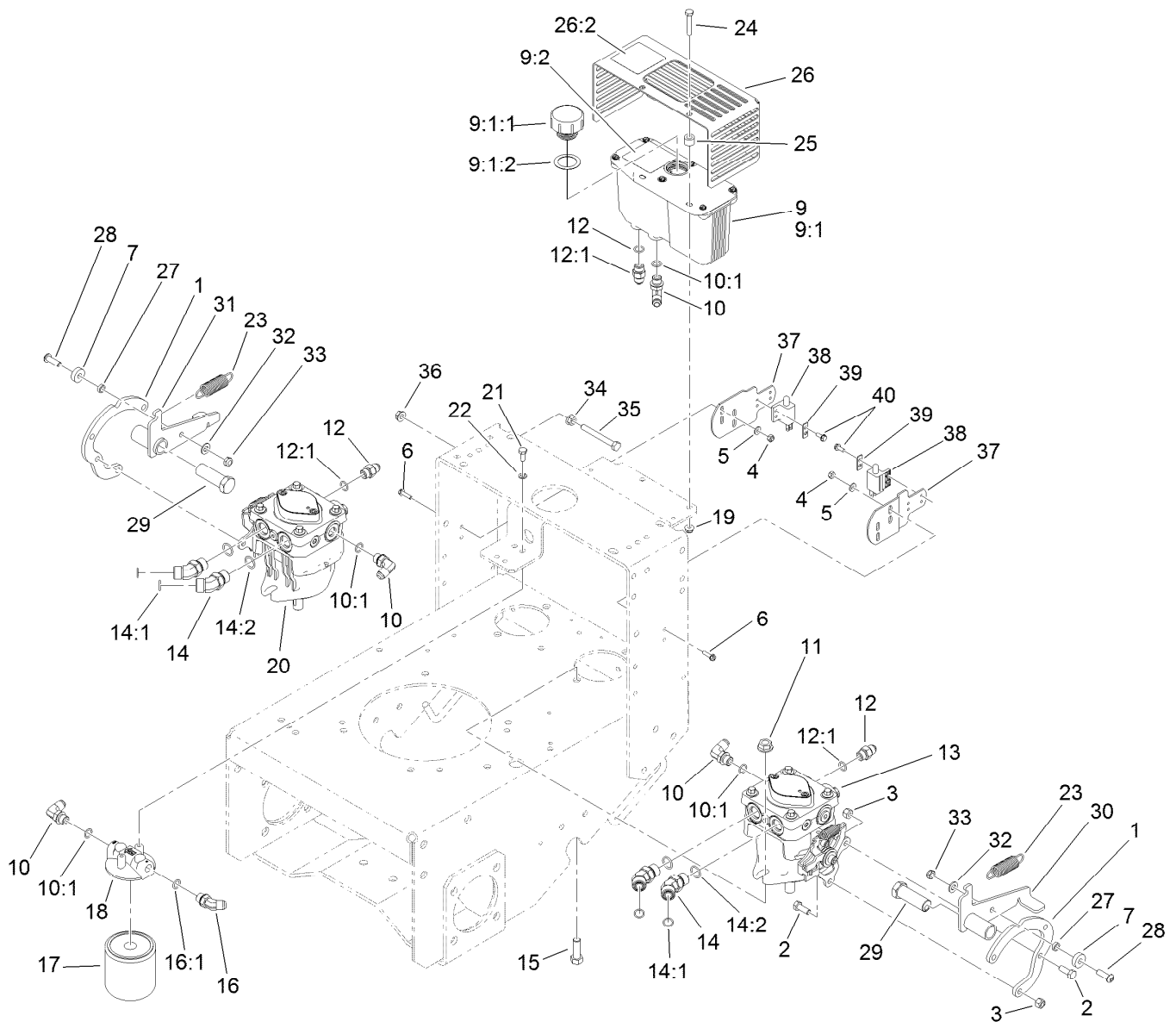
Ref.	Part Number	Qty.	Description	Ref.	Part Number	Qty.	Description
1	3296-6	1	Nut-Lock	19	110-5049	1	Belt-V
4	117-3528-01	1	Frame-Hydro	20	27-6230	1	Bolt-Wheel
5	95-1526	1	Shield-Trailing	21	3296-39	5	Nut-Lock, NI
6	104-1171	2	HYD Motor ASM	22	86-4770	1	Idler Lever ASM
7	340-6	4	Fitting-HYD, Straight	23	109-4077	1	Pulley-Idler, Flat
7:1	237-30	1	O-Ring	24	323-9	1	Screw-HH
7:2	237-80	1	O-Ring	25	120-6467	4	Screw-Set, SQH
8	3257-8	2	Key-Woodruff	26	1-807272	2	Key
9	95-1529	1	Rod-Shield	27	1-603496	1	Bushing-Idler
10	105-0800	2	Wheel Hub ASM	28	32128-49	8	Nut-HHF
10:2	10-6830	4	Stud-Type, Drive	29	108-6657-01	2	Plate-Frame
11	106-0892	2	Wheel And Tire ASM	30	32128-23	6	Nut-HF
11:1	104-6322	1	Tire	32	3256-24	1	Washer-Flat
11:2	106-0893	1	Wheel	33	323-7	4	Screw-HH
11:3	232-27	1	Stem-Valve	35	32144-4	4	Screw-HWH
12	85-7310	2	Nut-Motor, Wheel	36	110-5012-01	1	Angle-Mounting, Left
13	242-50	8	Nut-Lug	37	110-5013-01	1	Angle-Mounting, Right
14	325-12	8	Screw-HH	38	110-5014-01	1	Panel-Bottom
15	3234-32	6	Screw-HHF	39	106-8737	4	Nut-Retainer
16	105-5648	2	Pulley-Pump	40	3256-1	4	Washer-Flat
18	68-9950	1	Spring-Traction				



## Hydraulic Motor Assembly No. 104-1171

Ref.	Part Number	Qty.	Description
1	1-000119	1	Seal Kit
1:1		1	Ring-Back Up ●
1:2		1	Seal-Commutator ●
1:3		1	Seal-Shaft (Viton) ●
1:4		1	Washer-Back Up, Steel ●
1:5		5	Ring-Seal (Viton) ●
1:7		1	Seal-Dirt And Water ●
2	3257-8	1	Key-Woodruff
3	85-7310	1	Nut-Motor, Wheel
4	106-5549	6	Bolt-Special
5	106-8764	1	Shaft-Coupling

● Not serviced separately

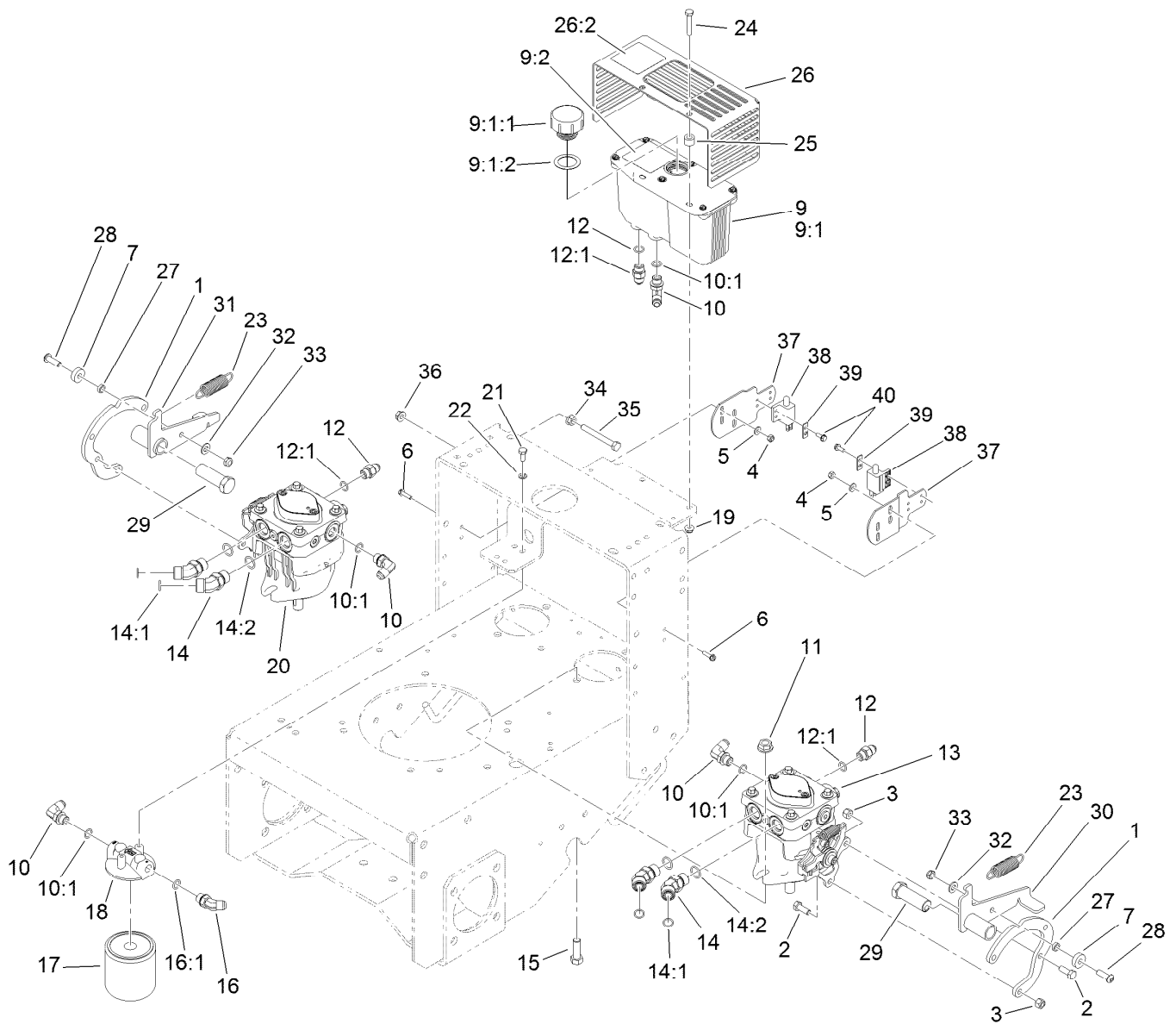


## Hydraulic System Assembly

Ref.	Part Number	Qty.	Description	Ref.	Part Number	Qty.	Description
1	112-9722	2	Bracket-Adapter, Pump	14	340-101	4	Fitting-HYD, 45 DEG
2	322-4	4	Screw-HH	14:1	237-30	1	O-Ring
3	3296-29	4	Nut-Lock, NI	14:2	237-79	1	O-Ring
4	3296-2	4	Nut-Lock, NI	15	324-5	4	Screw-HH
5	3256-14	4	Washer-Flat	16	353-212	1	Fitting-Elbow, 45 DEG
6	32105-13	4	Screw-HWH	16:1	237-42	1	O-Ring
7	251-259	2	Bearing-Ball	17	1-633750	1	Filter-Oil, HYD
9	107-8433	1	HYD Reservoir ASM	17	1-633752	1	Filter-Oil, HYD (Winter)
9:1		1	Reservoir-HYD ●	18	104-7836	1	Head-Filter
9:1:1	103-1948	1	Cap-Reservoir, HYD	19	104-7201	2	Nut-HF
9:1:2	103-1949	1	Gasket-Cap	20	115-4481	1	HYD Pump ASM
9:2	115-4212	1	Decal-Warning	21	321-3	2	Screw-HH
10	353-374	4	Fitting-Elbow, 90 DEG	22	3253-3	2	Washer-Lock
10:1	237-42	1	O-Ring	23	105-1210	2	Spring-Extension
11	32128-42	4	Nut-HF	24	321-9	2	Screw-HH
12	353-384	3	Fitting-Straight	25	105-3619	2	Spacer
12:1	237-42	1	O-Ring	26	112-7060	1	Shield ASM
13	115-4480	1	HYD Pump ASM	26:2	115-4212	1	Decal-Warning

● Not serviced separately



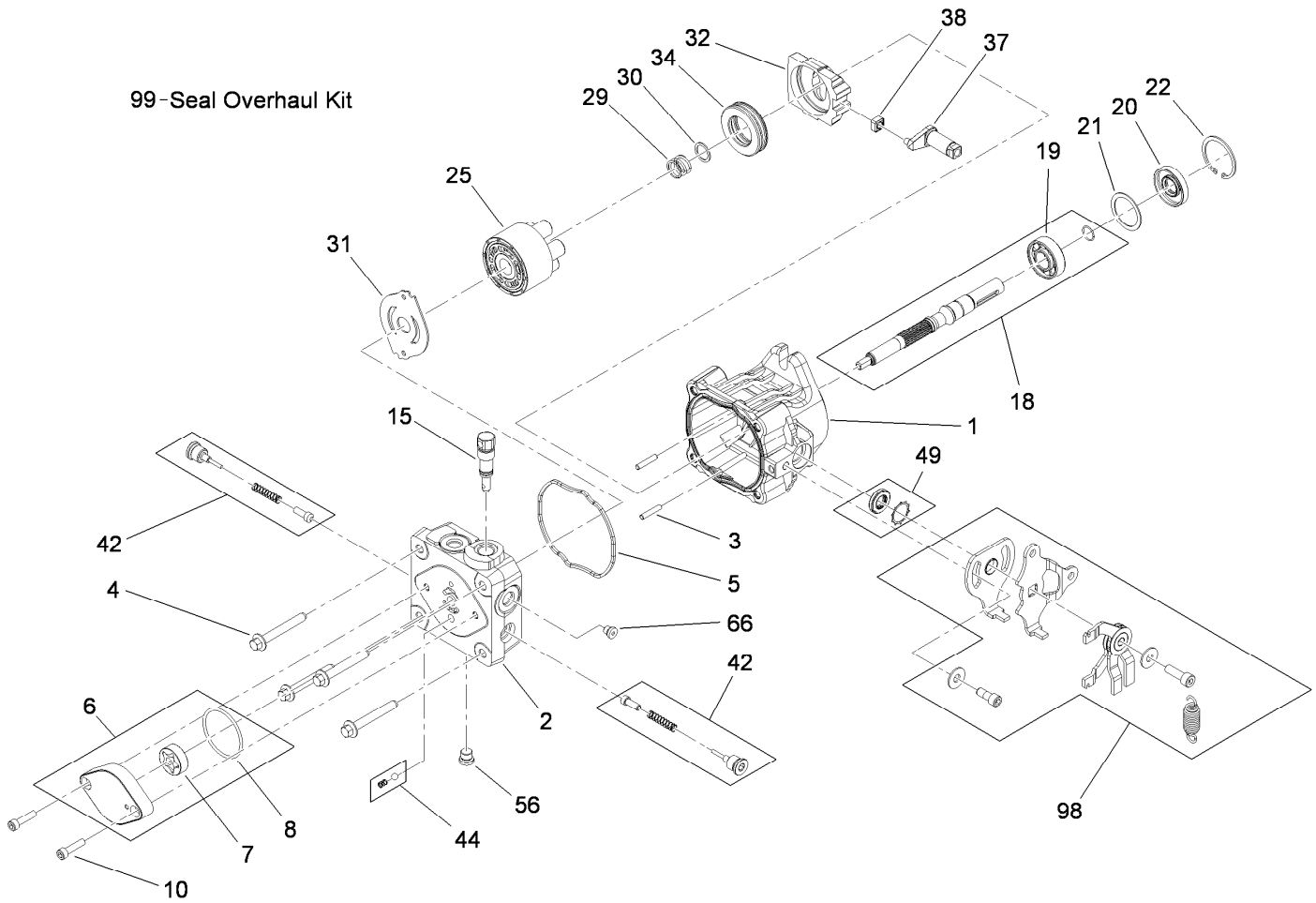


## Hydraulic System Assembly (continued)

Ref.	Part Number	Qty.	Description	Ref.	Part Number	Qty.	Description
27	82-4240	2	Spacer-Bearing	34	109-5715	2	Nut-HHF, Smooth
28	3274-104	2	Screw-HSBH	35	322-13	2	Screw-HH
29	112-9724	2	Pin-Adjustment, Neutral	36	32128-25	2	Nut-HF
30	112-9725	1	LH Detent Arm ASM	37	112-9723-01	2	Bracket-Neutral
31	112-9726	1	RH Detent Arm ASM	38	1-513152	2	Switch-Closed, Normally
32	3256-23	2	Washer-Flat	39	82-4570	2	Plate-Switch
33	3296-47	2	Nut-Lock, NI	40	32144-1	4	Screw-Taptite

● Not serviced separately

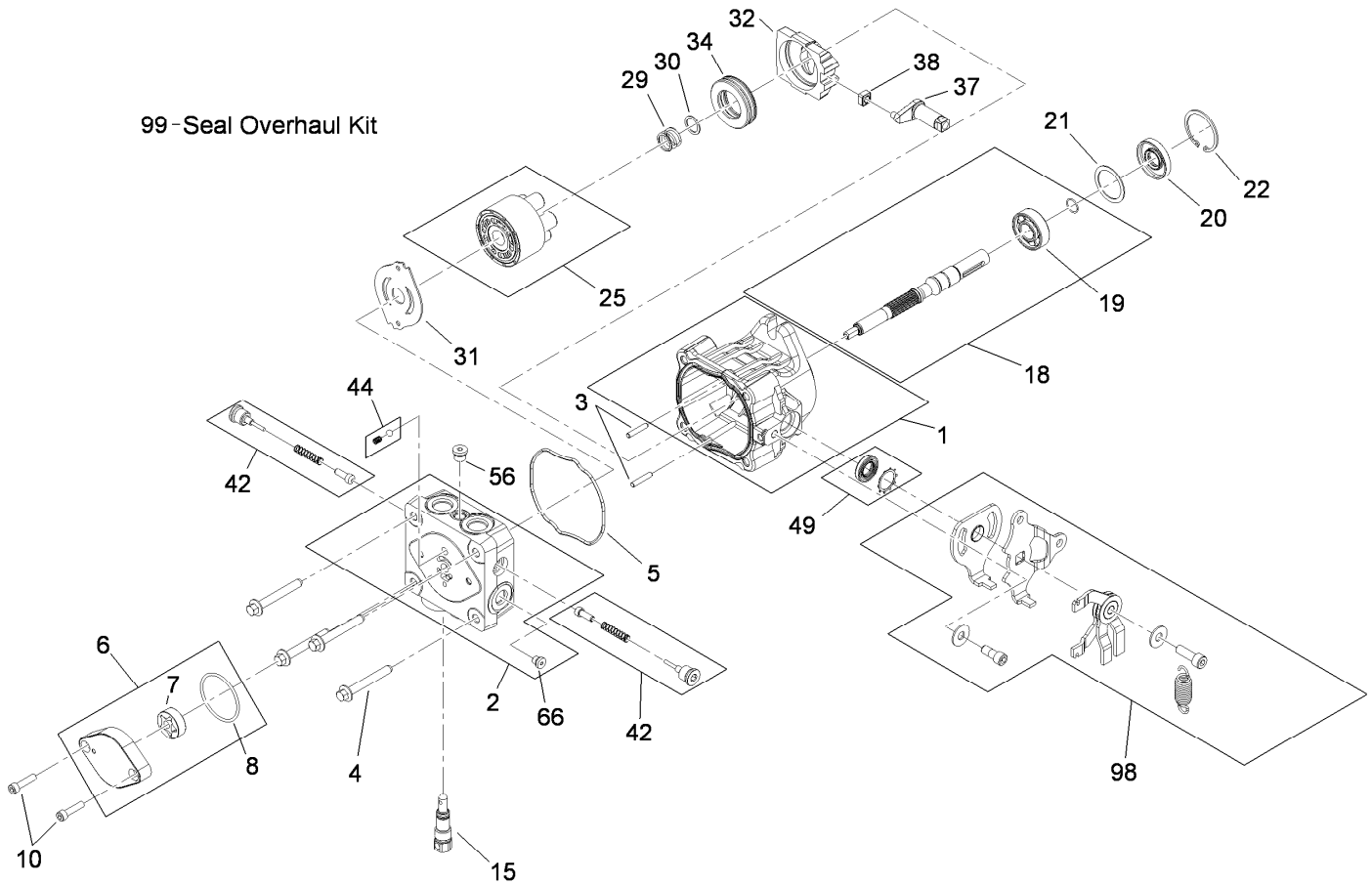
99-Seal Overhaul Kit



## Hydraulic Pump Assembly No. 115-4480

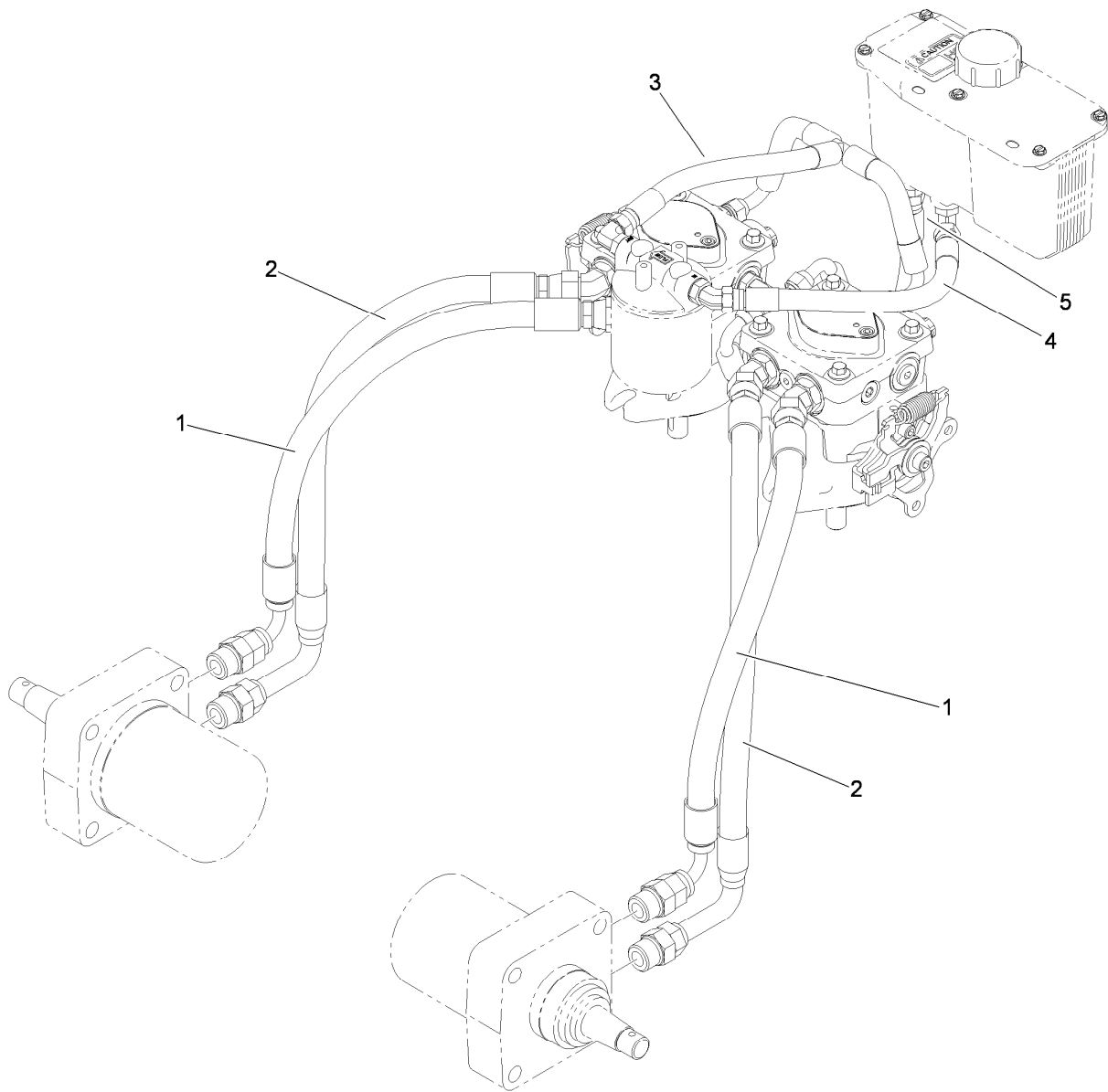
Ref.	Part Number	Qty.	Description	Ref.	Part Number	Qty.	Description
1	115-4464	1	Housing Kit	29	94-1936	1	Spring-Block
2	106-8752	1	End Cap Kit (W/Poppets)	30	94-1937	1	Washer-Thrust
3	106-8753	2	Pin-Headless, Straight	31	105-6185	1	Plate-Valve
4	106-8754	4	Bolt-HF	32	94-1907	1	Swashplate-Variable
5	106-8755	1	O-Ring	34	94-6922	1	Bearing-Thrust
6	106-8756	1	Charge Pump Kit	37	115-4458	1	Arm-Trunnion, Tapered Square
7	104-2122	1	Gerotor ASM	38	94-1910	1	Guide-Slot
8	106-8757	1	O-Ring	42	98-3252	2	Valve-Check (W/Poppet)
10	104-2111	2	Capscrew	44	106-8760	1	Charge Relief Valve Kit
15	106-8759	1	Bypass Valve Kit	49	114-8155	1	Trunnion Seal Kit
18	103-2664	1	Input Shaft Kit	56	106-8762	1	Plug-HSH
19	104-5311	1	Bearing-Ball	66	106-8763	1	Plug-HSH
20	104-5310	1	Seal-Lip	98	115-4459	1	Kit-Return
21	104-5308	1	Spacer	99	105-6184	1	Seal Overhaul Kit
22	104-5309	1	Ring-Retaining				
25	103-2666	1	Cylinder Block Kit				

99-Seal Overhaul Kit



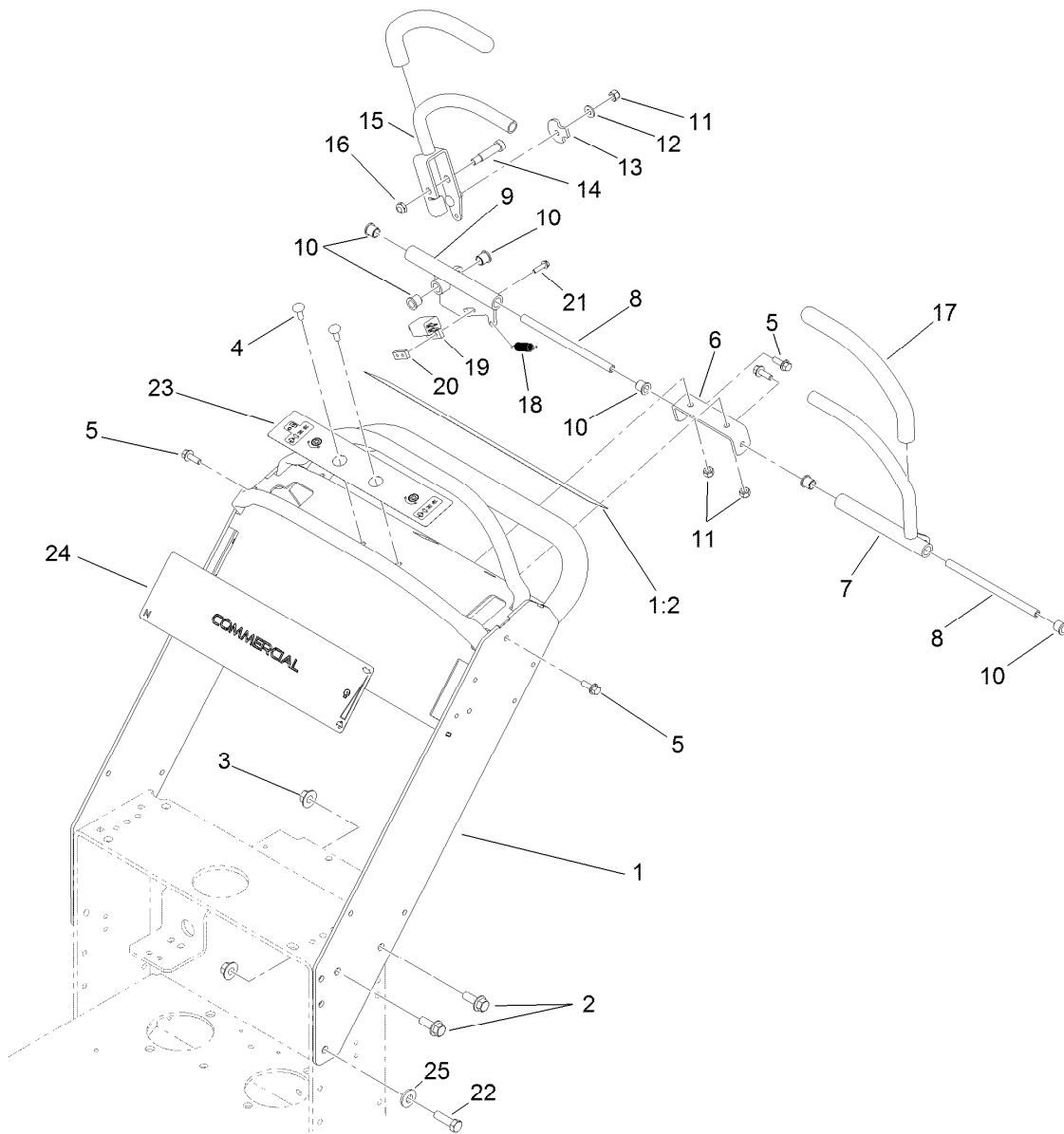
## Hydraulic Pump Assembly No. 115-4481

Ref.	Part Number	Qty.	Description	Ref.	Part Number	Qty.	Description
1	115-4464	1	Housing Kit	29	94-1936	1	Spring-Block
2	106-8752	1	End Cap Kit (W/Poppets)	30	94-1937	1	Washer-Thrust
3	106-8753	2	Pin-Headless, Straight	31	105-6185	1	Plate-Valve
4	106-8754	4	Bolt-HF	32	94-1907	1	Swashplate-Variable
5	106-8755	1	O-Ring	34	94-6922	1	Bearing-Thrust
6	106-8756	1	Charge Pump Kit	37	115-4458	1	Arm-Trunnion, Tapered Square
7	104-2122	1	Gerotor ASM	38	94-1910	1	Guide-Slot
8	106-8757	1	O-Ring	42	98-3252	2	Valve-Check (W/Poppet)
10	104-2111	2	Capscrew	44	106-8760	1	Charge Relief Valve Kit
15	106-8759	1	Bypass Valve Kit	49	114-8155	1	Trunnion Seal Kit
18	103-2664	1	Input Shaft Kit	56	106-8762	1	Plug-HSH
19	104-5311	1	Bearing-Ball	66	106-8763	1	Plug-HSH
20	104-5310	1	Seal-Lip	98	115-4459	1	Kit-Return
21	104-5308	1	Spacer	99	105-6184	1	Seal Overhaul Kit
22	104-5309	1	Ring-Retaining				
25	103-2666	1	Cylinder Block Kit				



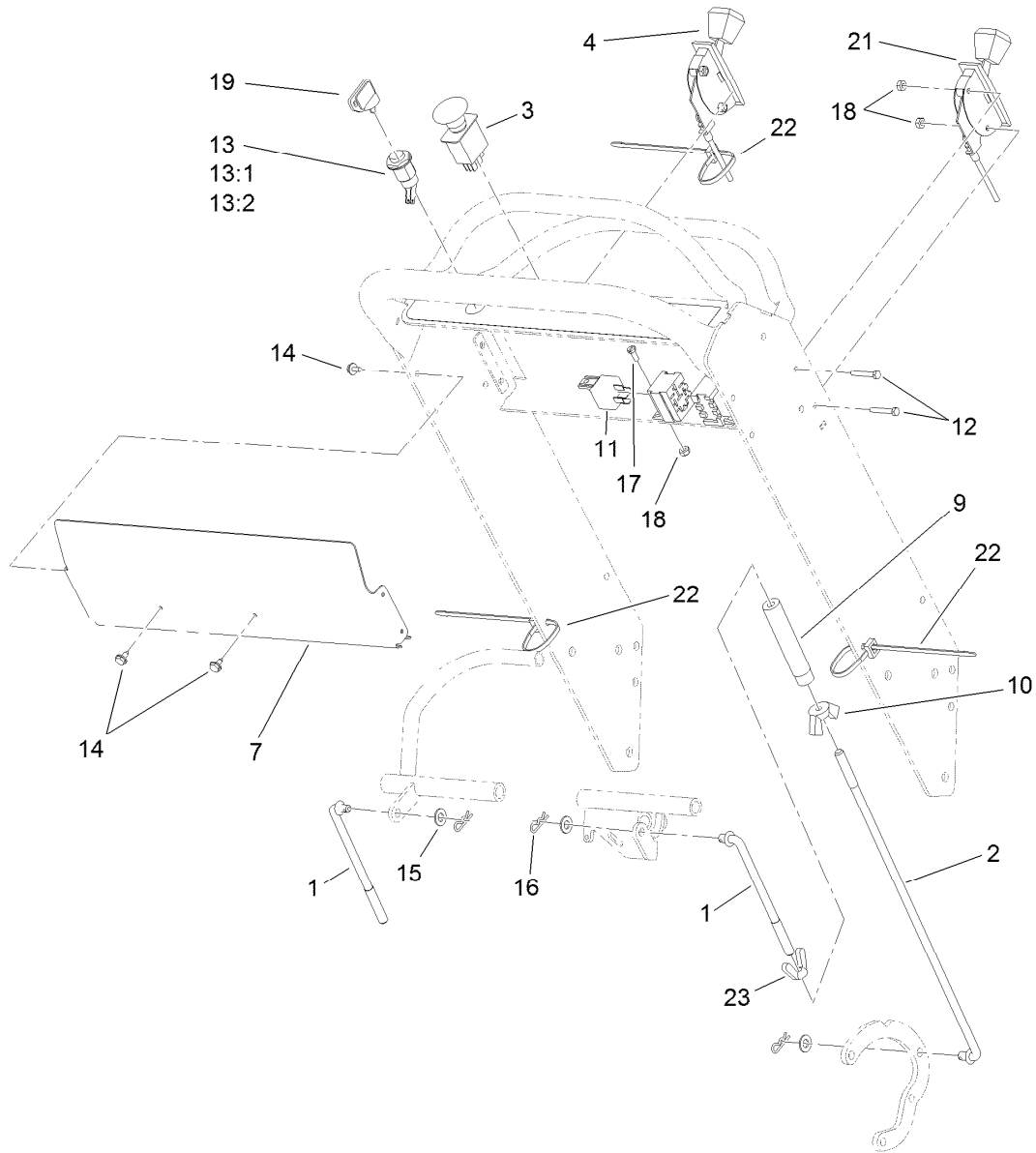
## Hydraulic Hose Assembly

<i>Ref.</i>	<i>Part Number</i>	<i>Qty.</i>	<i>Description</i>
1	112-9704	2	HYD Hose ASM
2	114-3430	2	HYD Hose ASM
3	105-5697	1	HYD Hose ASM
4	105-5699	1	HYD Hose ASM
5	114-3434	1	HYD Hose ASM



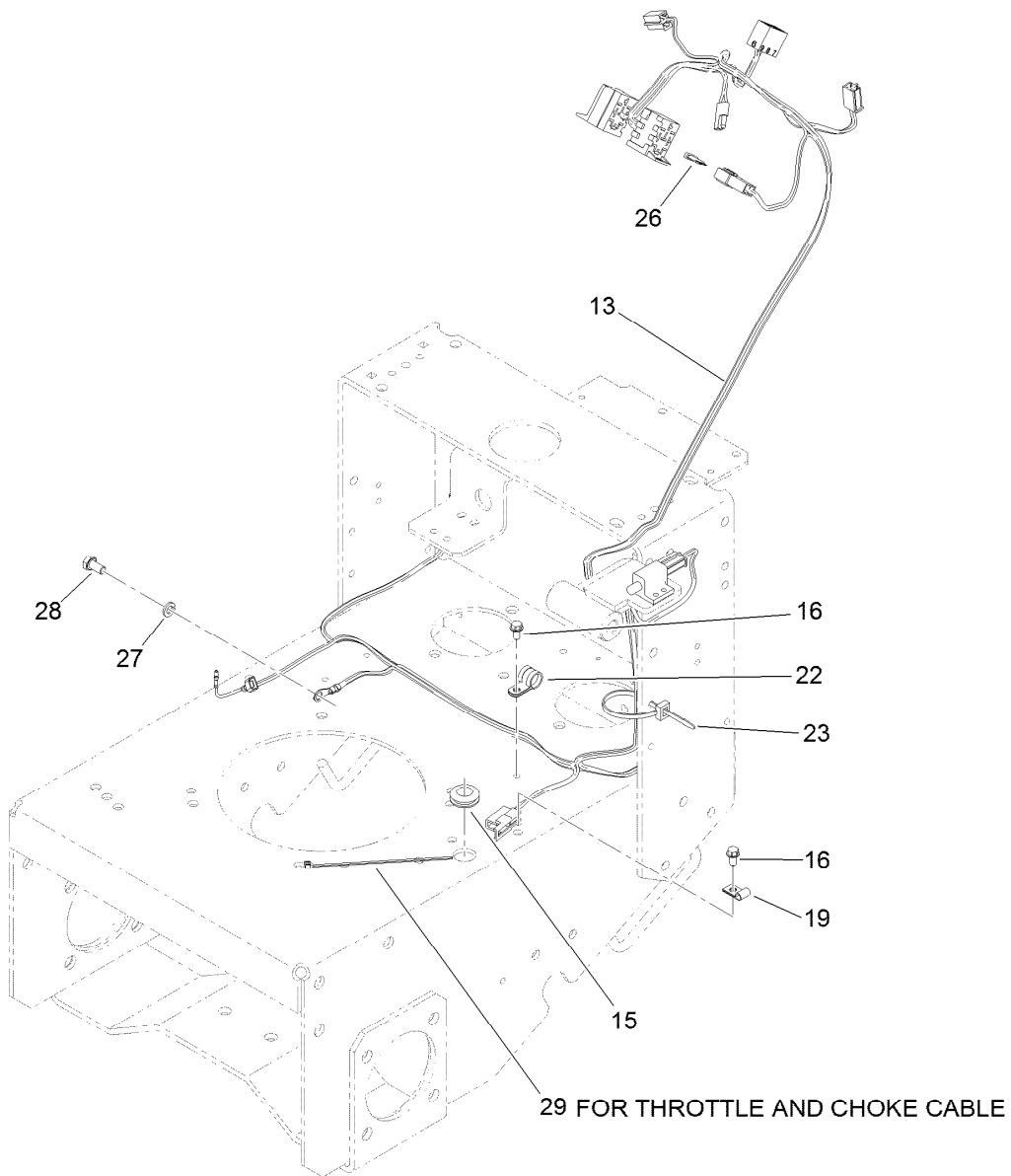
## Upper Control Assembly

Ref.	Part Number	Qty.	Description	Ref.	Part Number	Qty.	Description
1	114-3437	1	Handle ASM	13	114-0268	1	Cam-Lever
1:2	114-3422	1	Decal-Warning, Control	14	114-0239	1	Screw-HSH
2	3234-11	4	Screw-HHF	15	114-0238-03	1	Lever
3	32128-21	4	Nut-HF	16	3296-47	1	Nut-Lock, NI
4	3229-1	2	Bolt-CARR	17	119-0222	2	Grip
5	3234-4	4	Screw-HHF	18	114-0249	1	Spring-Extension
6	114-0235	1	Bracket-Support	19	1-513152	1	Switch-Closed, Normally
7	114-0272-03	1	Lever-Control	20	1-633181	1	Plate-Tapped
8	119-1885	2	Shaft-Pivot, Motion Control	21	32105-13	2	Screw-HWH
9	114-0234	1	Motion Control ASM	22	323-7	2	Screw-HH
10	103-9928	6	Bearing	23	114-3424	1	Decal-Control
11	3296-42	3	Nut-Lock, NI	24	114-3442	1	Decal-Panel, Control
12	3256-22	1	Washer-Flat	25	98-5975	2	Washer-Belleville



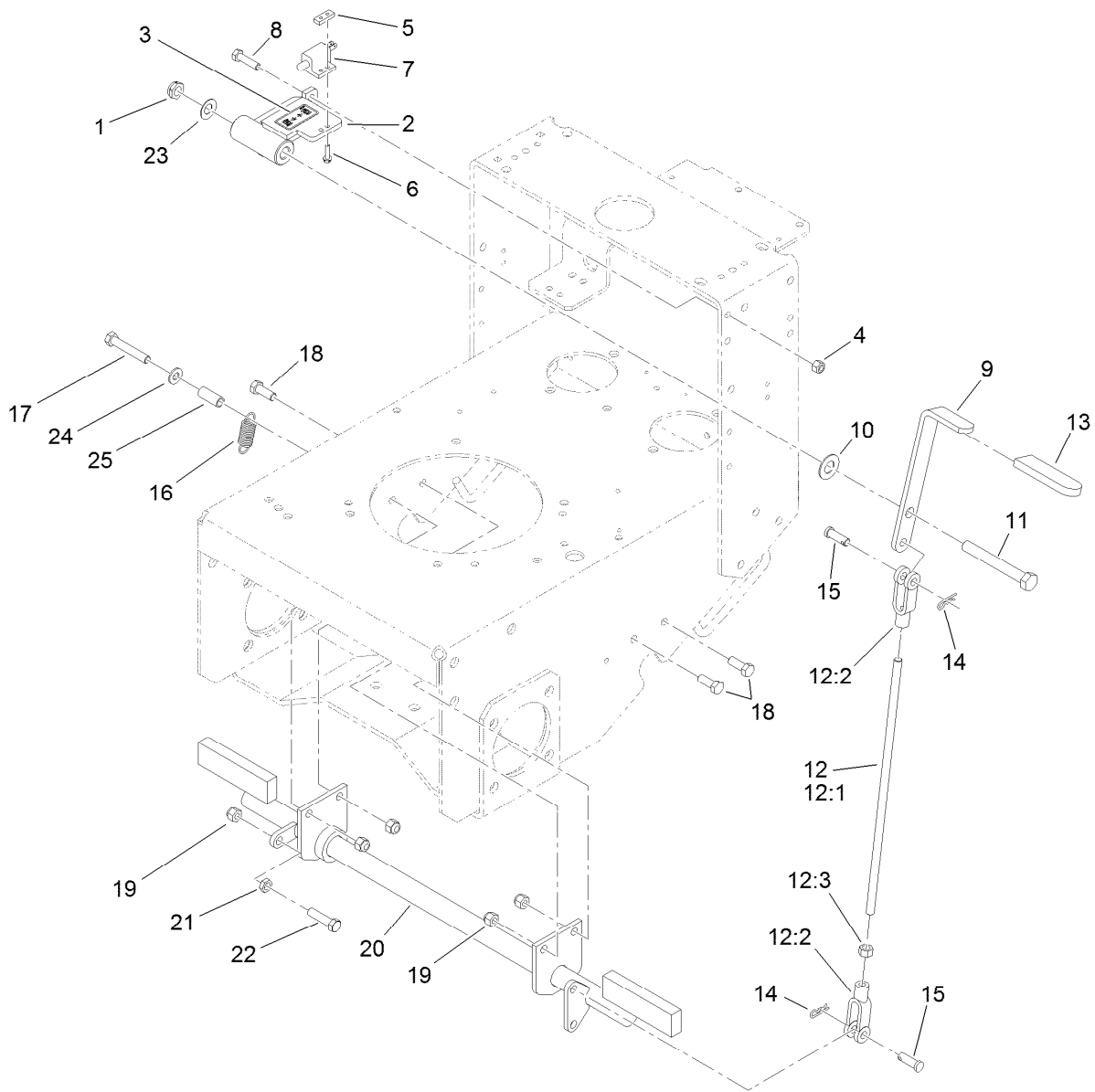
## Control Panel Assembly

<i>Ref.</i>	<i>Part Number</i>	<i>Qty.</i>	<i>Description</i>	<i>Ref.</i>	<i>Part Number</i>	<i>Qty.</i>	<i>Description</i>
1	114-0275	2	Rod-Control, Upper	13:2	3254-5	1	Washer-Tooth, Internal
2	114-0276	2	Rod-Control, Lower	14	32104-76	4	Screw-HWHTF
3	114-0279	1	Switch-PTO	15	3256-23	4	Washer-Flat
4	119-6539	1	Cable-Throttle	16	3290-307	4	Pin-Hair
7	114-0270-03	1	Cover-Panel, Control	17	32105-8	2	Screw-SHH
9	95-1504	2	Turnbuckle	18	3296-2	6	Nut-Lock, NI
10	32103-3	2	Nut-Wing	19	63-8360	1	Key-Ignition
11	105-4145	2	Relay	21	110-4995	1	Cable-Choke
12	3290-360	4	Screw-HH	22	3290-378	2	Tie-Cable
13	29-5560	1	Switch-On / Off	23	114-0281	2	Nut-Wing, LH
13:1	218-461	1	Nut-HH				



## Electrical System Assembly

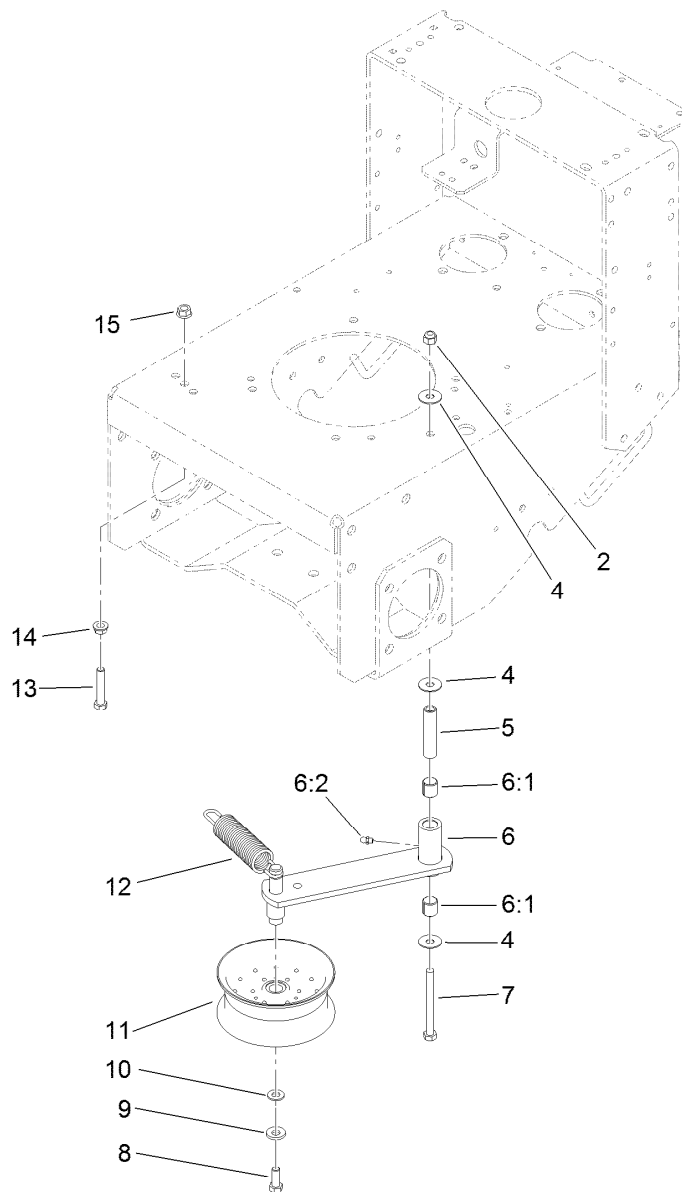
<i>Ref.</i>	<i>Part Number</i>	<i>Qty.</i>	<i>Description</i>
13	114-3420	1	Harness-Wire
15	112-7069	1	Grommet
16	32144-4	2	Screw-HWH
19	2412-72	1	Clip-Closed, Insulated
22	2412-134	1	Clamp-R
23	3290-378	1	Tie-Cable
26	218-578	1	Fuse-Blade, 10 Amp
27	3253-4	1	Washer-Lock
28	33114-016	1	Screw-HH
29	3290-378	1	Tie-Cable



## Parking Brake Assembly

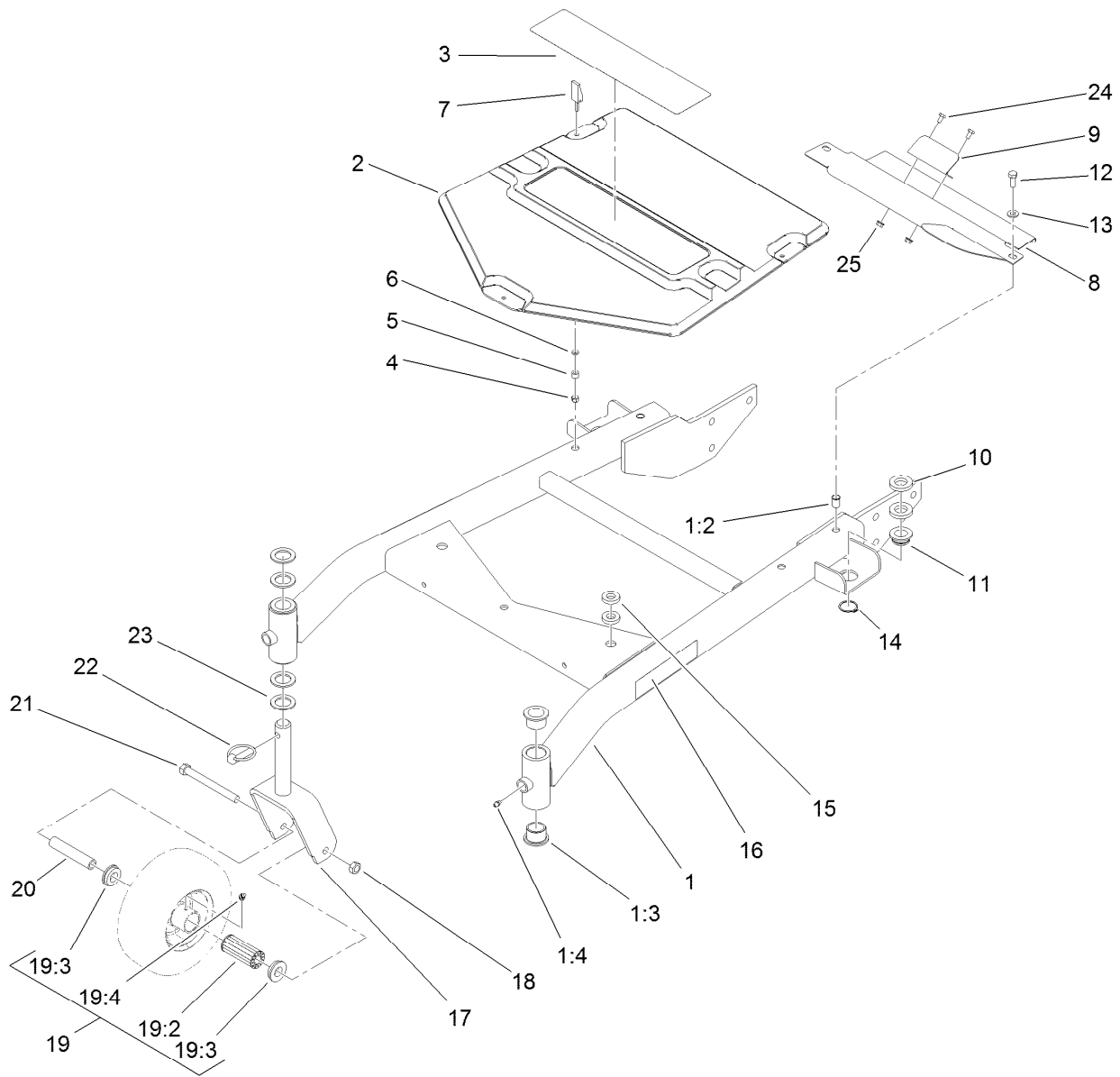
<i>Ref.</i>	<i>Part Number</i>	<i>Qty.</i>	<i>Description</i>	<i>Ref.</i>	<i>Part Number</i>	<i>Qty.</i>	<i>Description</i>
1	3296-45	1	Nut-Lock, NI	12:3	3219-3	1	Nut-Hex
2	112-8716-01	1	Support-Handle	13	1-303020	1	Grip-Lever
3	112-8721	1	Decal-Brake	14	3290-307	2	Pin-Hair
4	3296-29	2	Nut-Lock, NI	15	1-808285	2	Pin-Clevis
5	1-633181	1	Plate-Tapped	16	613386	1	Spring-Brake
6	32105-13	2	Screw-HWH	17	323-11	1	Screw-HH
7	1-513152	1	Switch-Closed, Normally	18	323-6	3	Screw-HH
8	322-6	2	Screw-HH	19	3296-39	5	Nut-Lock, NI
9	106-0671-01	1	Handle-Brake	20	110-4976-01	1	Shaft-Brake, Parking
10	257-7	1	Bearing-Thrust	21	3218-3	1	Nut-Jam
11	325-17	1	Screw-HH	22	323-8	1	Screw-HH
12	115-1465	1	Brake Rod ASM	23	112-9972	1	Washer-Conical, Spring
12:1	108-2747	1	Rod-Brake	24	3256-24	1	Washer-Flat
12:2	1-633131	2	Yoke-Linkage, Brake	25	114-1337	1	Spacer-Spring





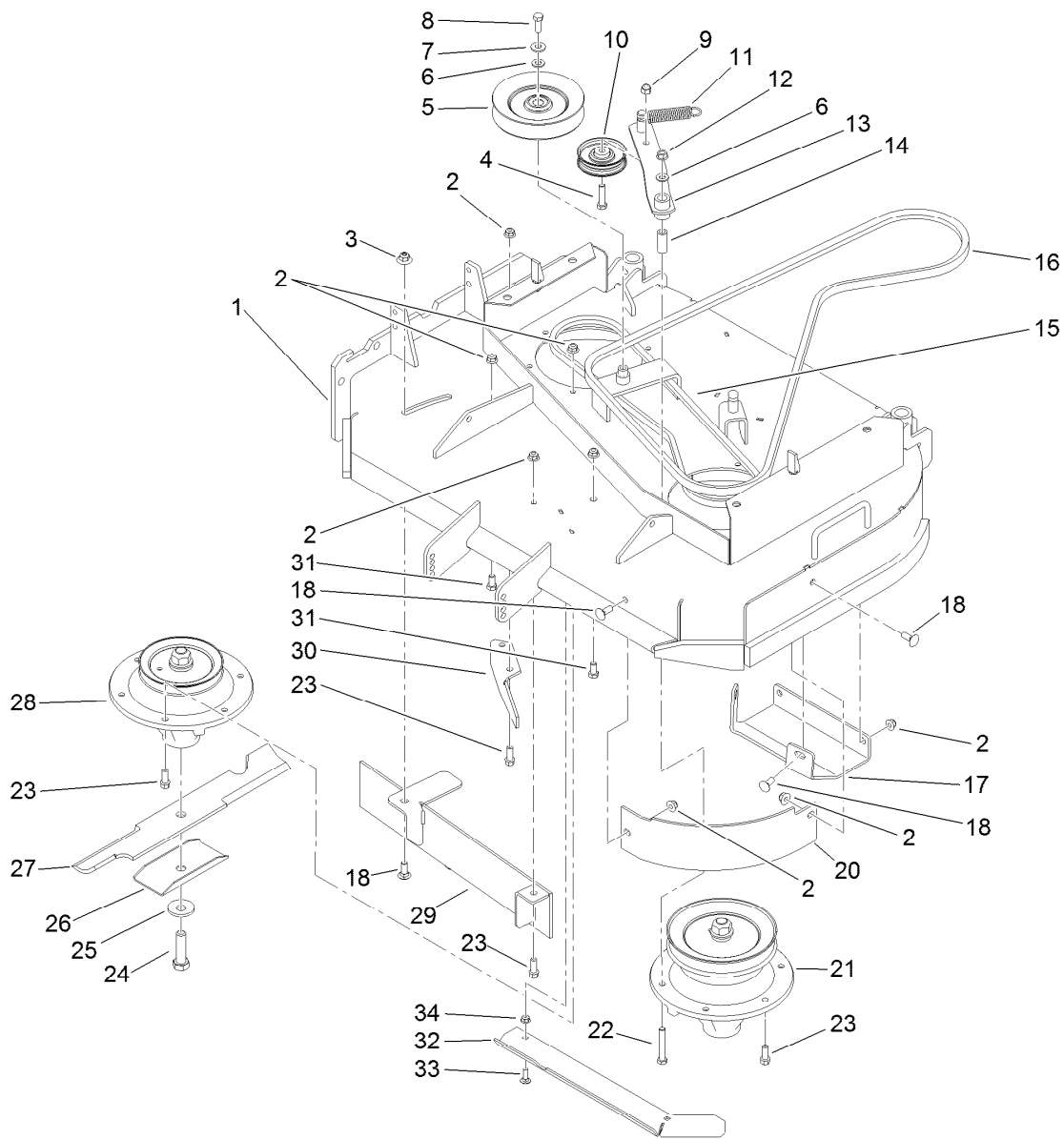
## Power-Take-Off Idler Assembly

Ref.	Part Number	Qty.	Description
2	3296-39	1	Nut-Lock, NI
4	52-2860	3	Washer
5	104-6377	1	Tube-Idler
6	112-7055	1	Idler Arm ASM
6:1	1-513034	2	Sleeve-Bearing
6:2	302-5	1	Fitting-Grease
7	323-42	1	Screw-HH
8	323-6	1	Screw-HH
9	98-5975	1	Washer-Belleville
10	3256-24	1	Washer-Flat
11	116-4666	1	Idler-Pulley, Flat
12	105-8443	1	Spring-Extension
13	323-10	1	Screw-HH
14	3290-357	1	Nut-HHF, Whiz
15	32128-21	1	Nut-HF



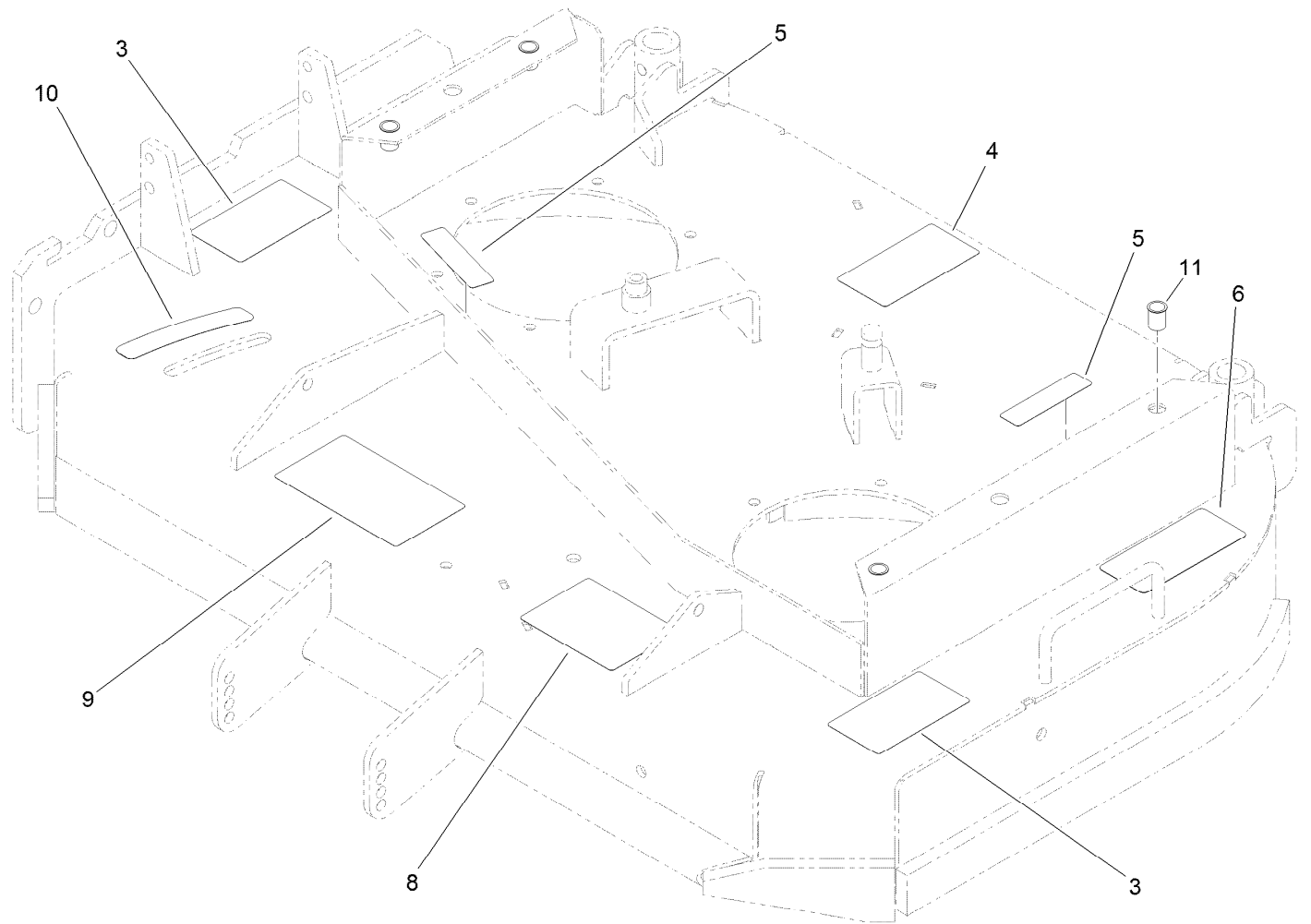
## Carrier Frame Assembly

<i>Ref.</i>	<i>Part Number</i>	<i>Qty.</i>	<i>Description</i>	<i>Ref.</i>	<i>Part Number</i>	<i>Qty.</i>	<i>Description</i>
1	110-6960	1	Carrier Frame ASM	14	32120-33	2	Ring-Retaining
1:2	32148-9	2	Insert-Nut	15	1-323539	4	Spacer
1:3	94-1291	4	Bushing	16	106-0636	2	Decal
1:4	302-5	2	Fitting-Grease	17	105-3159-01	2	Fork-Castor
2	110-6970	1	Cover-Frame, Carrier	18	32153-5	2	Nut-Hex
3	112-9710	1	Decal	19	110-5024	2	Wheel And Tire ASM
4	1-804254	3	Nut-Lock, HH	19:2	112-7066	1	Bearing-Roller
5	106-6778	3	Bushing-Latch, Swell	19:3	1-513810	2	Bushing
6	99-3058	3	Washer	19:4	302-61	1	Fitting-Grease
7	106-6777	3	Handle-Latch, Swell	20	100-6453	2	Bushing-Spanner
8	119-7858-01	1	Shield-Belt	21	325-19	2	Screw-HH
9	119-7859-01	1	Shield-Heat, Manifold	22	283-71	2	Pin-Lynch
10	104-1105	4	Spacer-Support, Deck	23	3-6781	8	Washer-Thrust
11	1-513336	2	Bushing-Deck	24	321-2	2	Screw-HH
12	323-6	2	Screw-HH	25	32128-32	2	Nut-HHF
13	3256-24	2	Washer-Flat				



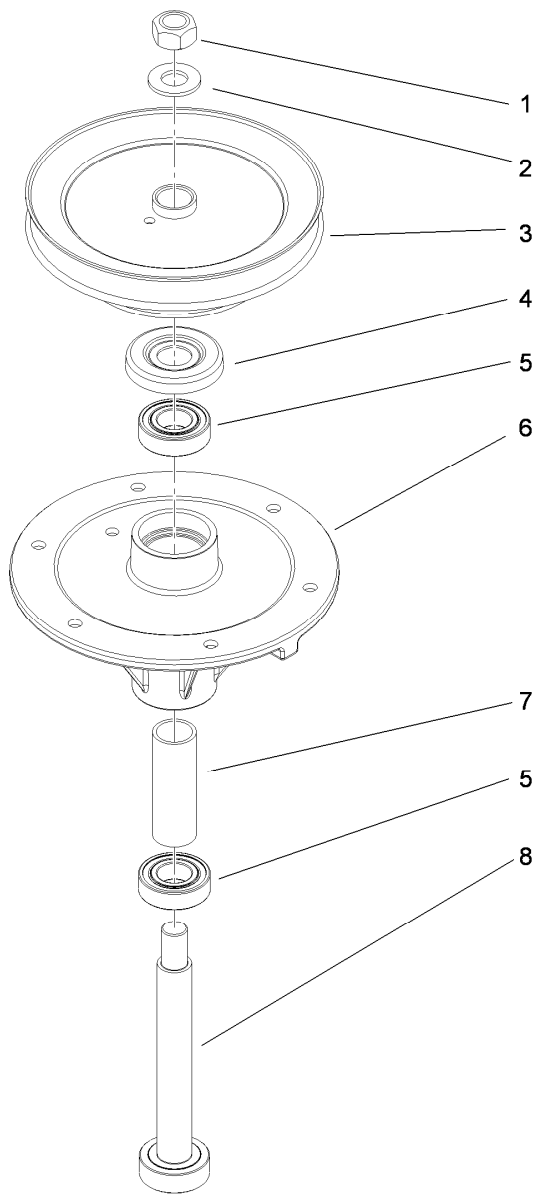
## Deck Drive and Baffle Assembly

<i>Ref.</i>	<i>Part Number</i>	<i>Qty.</i>	<i>Description</i>	<i>Ref.</i>	<i>Part Number</i>	<i>Qty.</i>	<i>Description</i>
1	115-4230	1	Deck And Decal ASM	18	3231-2	7	Bolt-CARR
2	104-8301	22	Nut-Flange, NI	20	110-6903-03	1	Baffle-Front, LH
3	109-6658	1	Nut-Flange, NI	21	110-6950	1	Spindle ASM
4	323-8	1	Screw-HH	22	323-12	1	Screw-HH
5	1-633166	1	Pulley-Idler	23	92-1624	14	Screw-HWH
6	3256-24	2	Washer-Flat	24	51-4060	2	Screw-Blade
7	98-5975	1	Washer-Belleville	25	103-0865	2	Washer-Blade Bolt, Heavy
8	323-6	1	Screw-HH	26	108-2727	2	Stiffener-Blade
9	3296-39	1	Nut-Lock, NI	27	105-7781-03	2	Blade-18In, Hi Flow
10	51-3660	1	Pulley-Idler	28	110-0728	1	Spindle ASM
11	105-2673	1	Spring-Extension	29	121-1779-03	1	Baffle
12	32128-21	1	Nut-HF	30	110-0754-01	1	Baffle-Discharge
13	105-0889	1	Idler Arm ASM	31	323-4	2	Screw-HH
14	51-3641	1	Sleeve-Pivot, Idler	32	119-7839-01	1	Extender-Deck
15	110-6953	1	Belt-V	33	3230-2	2	Bolt-CARR
16	105-0886	1	Belt-Drive, PTO	34	104-8300	2	Nut-Flange, NI
17	110-2037-01	1	Plate-Skid				



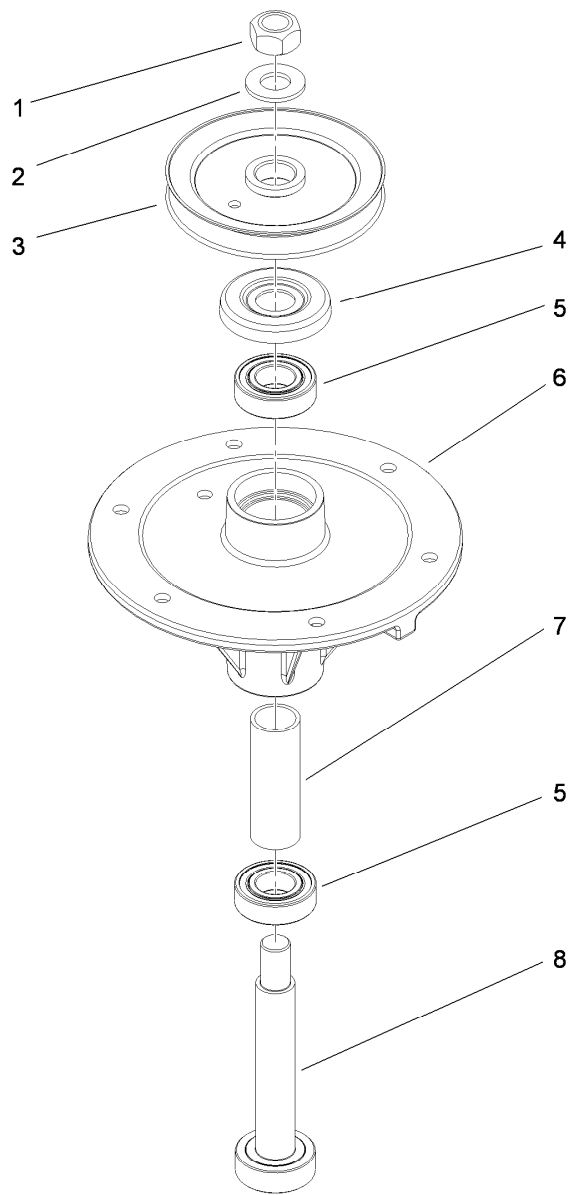
## Deck Decal Assembly No. 115-4230

<i>Ref.</i>	<i>Part Number</i>	<i>Qty.</i>	<i>Description</i>
3	114-3449	2	Decal-Danger
4	104-8185	1	Decal
5	119-0217	2	Decal-Danger
6	93-7818	1	Decal-Torque, Blade Bolt
8	99-8939	1	Decal-Anti Scalp
9	110-2068	1	Decal-Adjustment, Baffle
10	110-2067	1	Decal-Setting, Baffle
11	32148-9	4	Insert-Nut



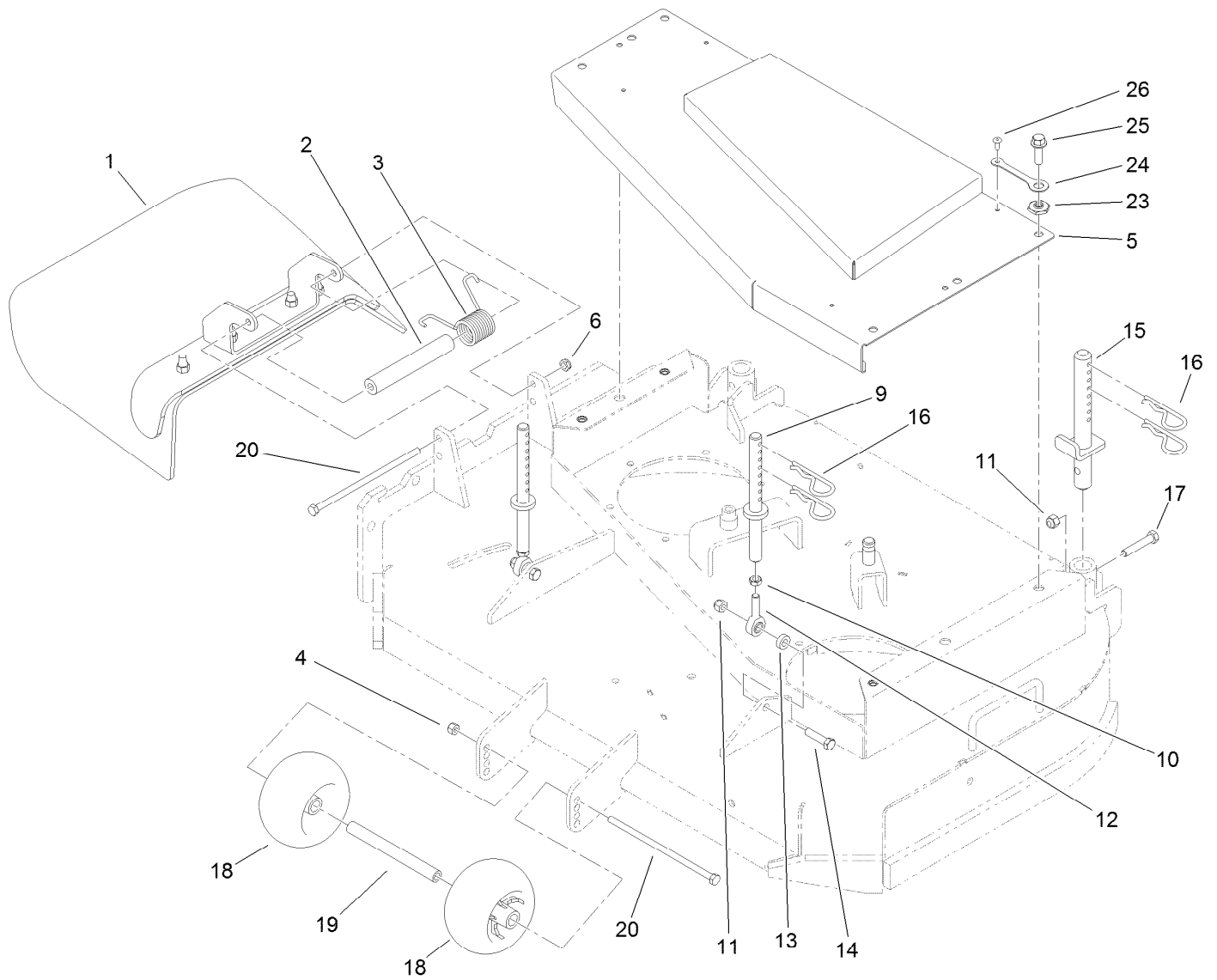
## Spindle Assembly No. 110-6950

<i>Ref.</i>	<i>Part Number</i>	<i>Qty.</i>	<i>Description</i>
1	3219-7	1	Nut-Hex
2	7-4150	1	Washer
3	110-6951	1	Pulley And Hub ASM
4	106-0873	1	Shield-Bearing
5	116-0720	2	Bearing-Ball
6	108-6696	1	Housing-Spindle
7	110-0727	1	Spacer-Bearing
8	110-0725	1	Shaft-Spindle



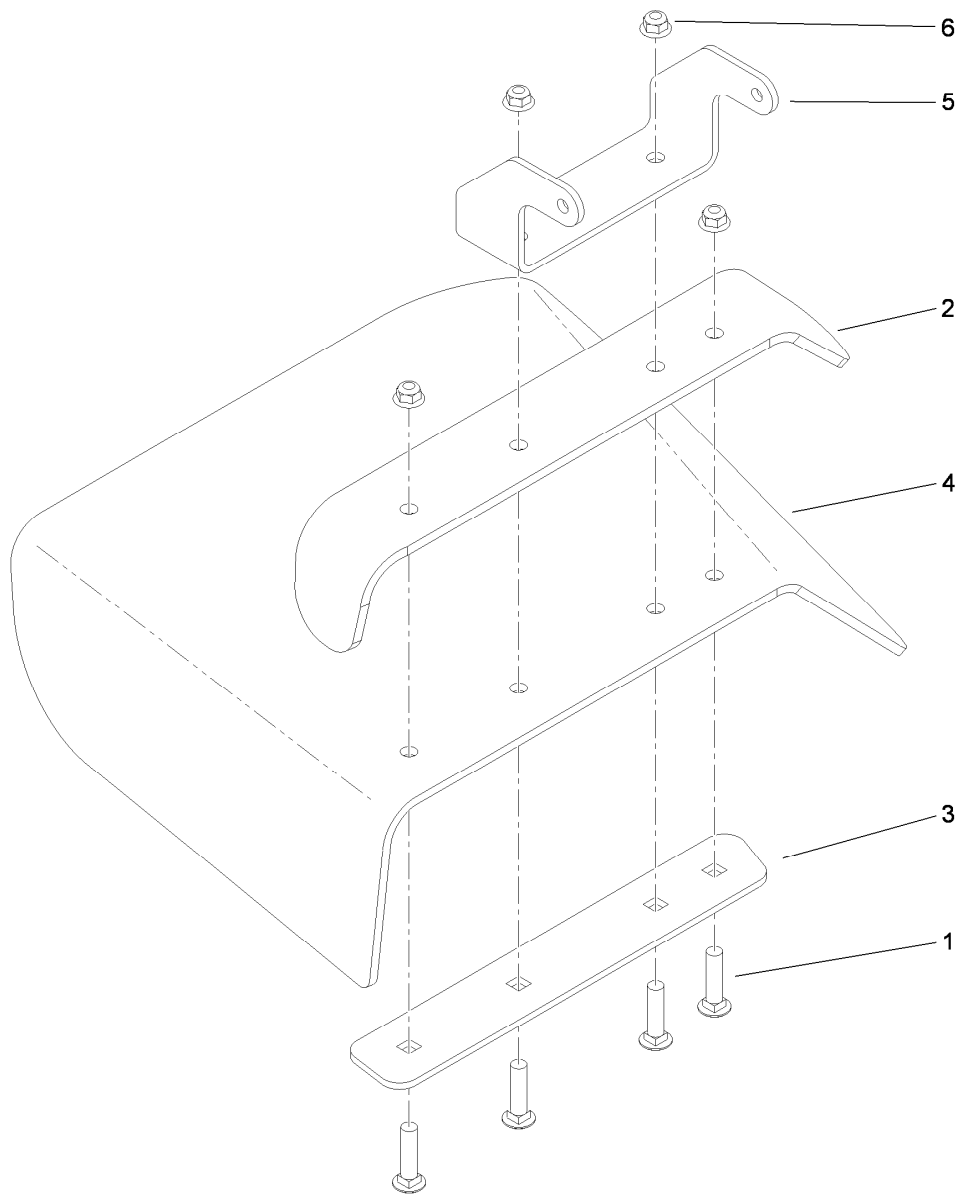
## Spindle Assembly No. 110-0728

<i>Ref.</i>	<i>Part Number</i>	<i>Qty.</i>	<i>Description</i>
1	3219-7	1	Nut-Hex
2	7-4150	1	Washer
3	104-1181	1	Pulley ASM
4	106-0873	1	Shield-Bearing
5	116-0720	2	Bearing-Ball
6	108-6696	1	Housing-Spindle
7	110-0727	1	Spacer-Bearing
8	110-0726	1	Shaft-Spindle



## Deck Deflector, Roller and Cover Assembly

<i>Ref.</i>	<i>Part Number</i>	<i>Qty.</i>	<i>Description</i>	<i>Ref.</i>	<i>Part Number</i>	<i>Qty.</i>	<i>Description</i>
1	110-0790	1	Deflector ASM	14	323-8	2	Screw-HH
2	105-4622	1	Spacer	15	110-2086	2	Rear Pin ASM
3	108-4052	1	Spring-Torsion	16	3290-256	6	Pin-Hair
4	3296-29	1	Nut-Lock, NI	17	323-10	2	Screw-HH
5	119-6512-01	1	Cover-Belt, Deck	18	1-603299	2	Roller-Scalp, Anti
6	3296-47	1	Nut-Lock, NI	19	98-5967	1	Spacer-Wheel
9	108-2674	2	Front Pin ASM	20	322-50	2	Screw-HH
10	3220-3	2	Nut-HJ	23	117-8347	4	Nut-Shoulder
11	3296-39	4	Nut-Lock, NI	24	117-8339	4	Lanyard-3 Inch
12	1-613204	2	Balljoint	25	3234-24	4	Screw-HHF
13	104-1156	2	Spacer	26	114439	4	Rivet-Pop



## Deflector Assembly No. 110-0790

<i>Ref.</i>	<i>Part Number</i>	<i>Qty.</i>	<i>Description</i>
1	3231-4	4	Screw-CARR
2	110-0792-01	1	Deflector
3	110-0793-03	1	Strap-Discharge
4	110-0791	1	Deflector-Rubber
5	107-4164-01	1	Bracket-Mounting, Deflector
6	104-8301	4	Nut-Flange, NI



# Attachments and Accessories

## For 30071 Commercial Walk-Behind Mower 16HP, T-Bar, Hydro Drive with 91cm TURBO FORCE Cutting Unit

<b>Product Name</b>	<b>Model/Part</b>
Blade-Recycler, 18in.....	105-7779-03
Blade-Med Flow, 18in .....	105-7794-03
Blade-Low Flow, 18in.....	105-7795-03
Blade-Atomic, 18in .....	105-7796-03
Blade-Hi Flow, 18in (6 Pack).....	108-1117
Blade-Atomic, 18in (6 Pack) .....	108-1118
Blade-Lo Flow, 18in (6 Pack) .....	110-0406
Blade-Recycler, 18in (6 Pack).....	110-0408
Blade-Med Flow, 18in (6 Pack) .....	110-0409
36in Bagger Enhancement Kit .....	110-2026
36in Recycler Kit.....	110-2080
Weight-Cast.....	112-7059-01
Oil-Synthetic, All Season .....	117-0066
Oil Filter .....	119-5852
Filter-fuel.....	120-2235
Element-Filter, Air .....	120-7447
Soft Bag (3 Bushel).....	30104
Tru Trak Sulky.....	30110
Toro 4-cycle Sae 30 Oil (32oz Bottle).....	38903
Spark Plug .....	92-2153

**Notes:**

**Notes:**



**Count on it.**