

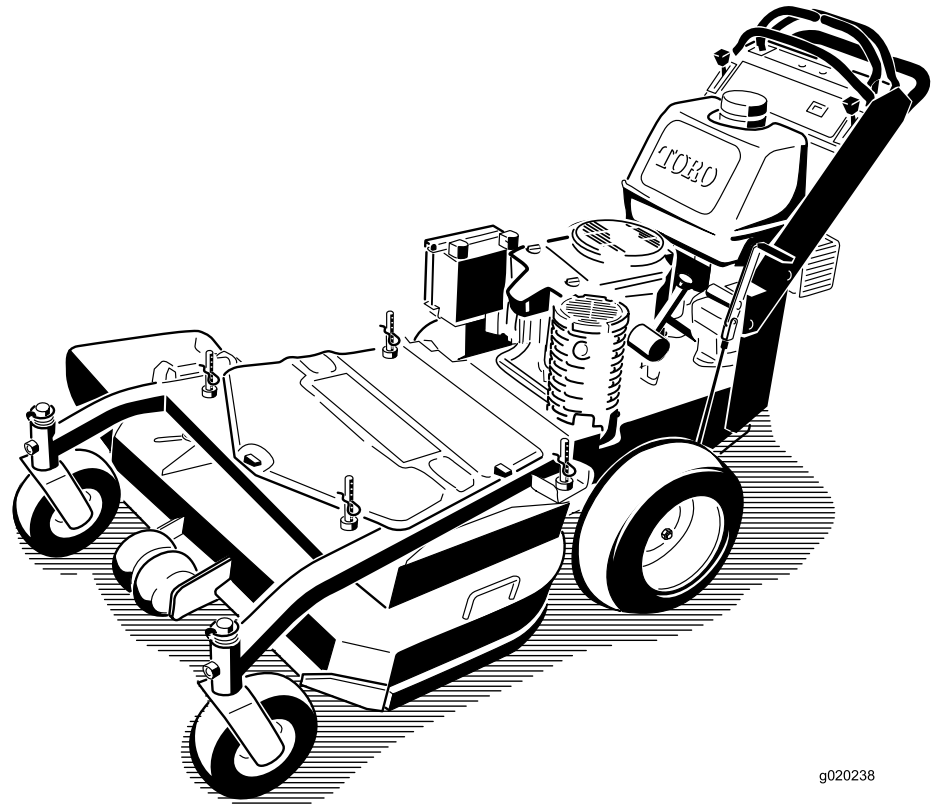


Count on it.

Operator's Manual

**Commercial Walk-Behind Mower
16HP, T-Bar, Hydro Drive with 91cm TURBO
FORCE® Cutting Unit**

Model No. 30071—Serial No. 31500001 and Up



g020238



⚠ WARNING

CALIFORNIA Proposition 65 Warning

This product contains a chemical or chemicals known to the State of California to cause cancer, birth defects, or reproductive harm.

The engine exhaust from this product contains chemicals known to the State of California to cause cancer, birth defects, or other reproductive harm.

This product complies with all relevant European directives; for details, please see the separate product specific Declaration of Conformity (DOC) sheet.

Introduction

This rotary-blade, lawn mower is intended to be used by residential homeowners or professional, hired operators. It is designed primarily for cutting grass on well-maintained lawns on residential or commercial properties. It is not designed for cutting brush or for agricultural uses.

Read this information carefully to learn how to operate and maintain your product properly and to avoid injury and product damage. You are responsible for operating the product properly and safely.

You may contact Toro directly at www.Toro.com for product and accessory information, help finding a dealer, or to register your product.

Whenever you need service, genuine Toro parts, or additional information, contact an Authorized Service Dealer or Toro Customer Service and have the model and serial numbers of your product ready. [Figure 1](#) identifies the location of the model and serial numbers on the product. Write the numbers in the space provided.

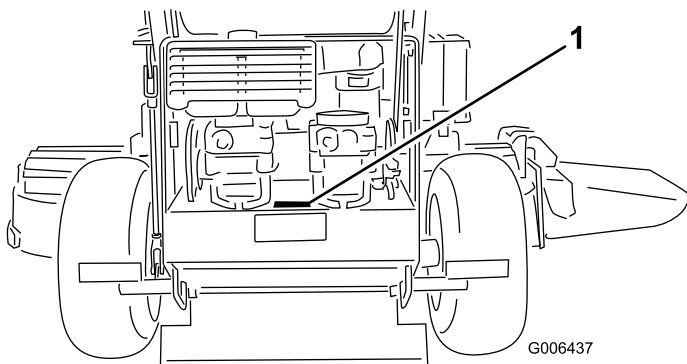


Figure 1

1. Location of the model and serial numbers

Model No. _____

Serial No. _____

This manual identifies potential hazards and has safety messages identified by the safety alert symbol ([Figure 2](#)), which signals a hazard that may cause serious injury or death if you do not follow the recommended precautions.



Figure 2

1. Safety alert symbol

This manual uses 2 words to highlight information.

Important calls attention to special mechanical information and **Note** emphasizes general information worthy of special attention.

Contents

Safety	4	Adjusting the PTO-Drive-Belt-Idler-Spring Anchor.....	31
General Lawn Mower Safety	4	Replacing the Pump-Drive Belt	31
Sound Pressure	5	Controls System Maintenance	32
Sound Power	5	Adjusting the Motion-Control-Handle Positions.....	32
Vibration Level	5	Hydraulic System Maintenance	34
Slope Indicator	6	Servicing the Hydraulic System.....	34
Safety and Instructional Decals	7	Mower Deck Maintenance.....	37
Product Overview	10	Servicing the Cutting Blades.....	37
Controls	10	Correcting the Mower Quality of Cut	38
Specifications	11	Setting up the Frame.....	38
Operation	11	Checking the Mower Deck Front-to-Rear Pitch	40
Adding Fuel.....	11	Changing the Mower Deck Front-to-Rear Pitch	40
Checking the Engine-Oil Level.....	12	Checking the Mower Deck Side-to-Side Height.....	41
Putting Safety First	12	Changing the Mower Deck Side-to-Side Height.....	41
Operating the Parking Brake	12	Matching the Height-of-Cut.....	41
Starting and Stopping the Engine.....	13	Replacing the Grass Deflector.....	42
Operating the Mower Blade Control (PTO).....	14	Cleaning	42
The Safety-Interlock System	14	Cleaning under the Mower	42
Driving Forward or Backward	15	Disposing of Waste.....	42
Stopping the Machine	15	Storage	43
Pushing the Machine by Hand	16	Cleaning and Storage	43
Transporting Machines.....	16	Troubleshooting	44
Side Discharging or Mulching the Grass.....	16		
Adjusting the Height-of-Cut	17		
Adjusting the Anti-Scalp Rollers	17		
Adjusting the Flow Baffle	17		
Positioning the Flow Baffle.....	18		
Maintenance	19		
Recommended Maintenance Schedule(s)	19		
Lubrication	20		
Lubricating the Machine.....	20		
Lubricating the Bearings.....	20		
Greasing the PTO Drive Belt Idler.....	20		
Engine Maintenance	21		
Servicing the Air Cleaner.....	21		
Servicing the Engine Oil.....	21		
Servicing the Spark Plugs.....	23		
Fuel System Maintenance	24		
Draining the Fuel Tank	24		
Replacing the Fuel Filter.....	25		
Electrical System Maintenance	25		
Servicing the Fuses.....	25		
Drive System Maintenance	26		
Adjusting the Tracking	26		
Checking the Tire Pressure	26		
Replacing the Caster Wheel Fork Bushings.....	26		
Servicing the Caster Wheel and Bearings.....	27		
Adjusting the Electric Clutch.....	28		
Cooling System Maintenance	28		
Cleaning the Air Intake Screen.....	28		
Brake Maintenance	29		
Servicing the Brakes.....	29		
Belt Maintenance	30		
Inspecting the Belts	30		
Replacing the Mower Belt.....	30		
Replacing the PTO-Drive Belt.....	30		

Safety

This machine has been designed in accordance with EN ISO 5395:2013.

Improperly using or maintaining the machine can result in injury. To reduce the potential for injury, comply with these safety instructions and always pay attention to the safety alert symbol, which means *Caution, Warning, or Danger*—personal safety instruction. Failure to comply with the instruction may result in personal injury or death.

General Lawn Mower Safety

This cutting machine is capable of amputating hands and feet and throwing objects. Failure to observe the following safety instructions could result in serious injury or death.

Training

- Read the instructions carefully. Be familiar with the controls and the proper use of the equipment.
- Never allow children or people unfamiliar with these instructions to use the mower. Local regulations can restrict the age of the operator.
- Keep in mind that the operator or user is responsible for accidents or hazards occurring to other people or their property.
- Understand explanations for all pictograms used on the mower or in the instructions.

Gasoline

WARNING-Gasoline is highly flammable. Take the following precautions.

- Store fuel in containers specifically designed for this purpose.
- Refuel outdoors only and do not smoke while refueling.
- Add fuel before starting the engine. Never remove the cap of the fuel tank or add gasoline while the engine is running or when the engine is hot.
- If gasoline is spilled, do not attempt to start the engine but move the mower away from the area of spillage and avoid creating any source of ignition until gasoline vapors have dissipated.
- Replace all fuel tank and container caps securely.

Preparation

- While mowing, always wear substantial footwear and long trousers. Do not operate the equipment when barefoot or wearing open sandals.
- Thoroughly inspect the area where the equipment is to be used and remove all stones, sticks, wires, bones and other foreign objects.

- Before using, always visually inspect to see that guards, and safety devices, such as deflectors and/or grass catchers, are in place and working correctly.
- Before using, always visually inspect to see that the blades, blade bolts and cutter assembly are not worn or damaged. Replace worn or damaged blades and bolts in sets to preserve balance.

Starting

- Disengage all blade and drive clutches and shift into neutral before starting the engine.
- Do not tilt mower when starting the engine or switching on the motor, unless the mower has to be tilted for starting. In this case, do not tilt it more than absolutely necessary and lift only the part, which is away from the operator.
- Start the engine or switch on the motor carefully according to instructions and with feet well away from the blade(s) and not in front of the discharge chute.

Operation

- Never mow while people, especially children, or pets are nearby.
- Mow only in daylight or in good artificial light.
- Avoid operating the lawn mower in wet grass, where feasible.
- Stay alert for holes in the terrain and other hidden hazards.
- Never direct discharge of material towards bystanders.
- Do not put hands or feet near or under rotating parts. Keep clear of the discharge opening at all times.
- Never pick up or carry a lawn mower while the engine is running.
- Use extreme caution when reversing or pulling a pedestrian controlled lawn mower towards you.
- Walk, never run.
- Slopes:
 - Do not mow excessively steep slopes.
 - Exercise extreme caution when on slopes.
 - Mow across the face of slopes, never up and down and exercise extreme caution when changing direction on slopes.
 - Always be sure of your footing on slopes.
- Use low throttle settings when engaging the traction-clutch, especially in high gears. Reduce speed on slopes and in sharp turns to prevent overturning or loss of control.
- Stop the blade if the lawn mower has to be tilted for transportation when crossing surfaces other than grass and when transporting the lawn mower to and from the area to be mowed.

- Do not operate the engine in a confined space where dangerous carbon monoxide fumes can collect.
- Stop the engine
 - whenever you leave the lawn mower.
 - before refueling.
 - before removing the grass catcher.
 - before making height adjustment unless adjustment can be made from the operator's position.
- Stop the engine and disconnect the spark-plug wire or turn off and remove the key.
 - before clearing blockages or unclogging chute.
 - before checking, cleaning or working on the lawn mower.
 - after striking a foreign object, inspect the lawn mower for damage and make repairs before restarting and operating the lawn mower.
 - if lawn mower starts to vibrate abnormally (check immediately).
- Use care when using sulkies, and
 - use only approved drawbar hitch points.
 - limit loads to those you can safely control.
 - do not turn sharply: use care when reversing.
 - do not carry passengers.
- Watch out for traffic when crossing or near roadways.
- Before leaving the operator's position
 - disengage the power take-off and lower the attachments.
 - change into neutral and set the parking brake.
 - stop the engine and remove the key.

Maintenance and Storage

- Keep all nuts, bolts and screws tight to be sure the equipment is in safe working condition.
- Do not use pressure cleaning equipment on machine.
- Never store the equipment with gasoline in the tank and inside a building where fumes can reach an open flame or spark.
- Allow the engine to cool before storing in any enclosure.
- To reduce the fire hazard, keep the engine, silencer, battery compartment and gasoline storage are free of grass, leaves, or excessive grease.
- Check grass catcher components and the discharge guard frequently and replace with manufacturer's recommended parts, when necessary.
- Replace worn or damaged parts for safety.

- Replace faulty silencers.
- If the fuel tank has to be drained, do this out-doors.
- Do not change the engine governor settings or overspeed the engine. Operating an engine at excessive speed can increase the hazard of personal injury.
- On multibladed lawn mowers, take care as rotating one blade may cause others to rotate.
- Be careful during adjustment of the lawn mower to prevent entrapment of the fingers between moving blades and fixed parts of the lawn mower.
- **To ensure the best performance and safety, purchase only genuine Toro replacement parts and accessories. Do not use *will fit* parts and accessories; they may cause a safety hazard.**

Sound Pressure

This unit has a sound pressure level at the operator's ear of 88 dBA, which includes an Uncertainty Value (K) of 1 dBA.

The sound pressure level was determined according to the procedures outlined in EN ISO 5395:2013.

Sound Power

This unit has a guaranteed sound power level of 100 dBA, which includes an Uncertainty Value (K) of 1 dBA.

The sound power level was determined according to the procedures outlined in ISO 11094.

Vibration Level

Hand-Arm

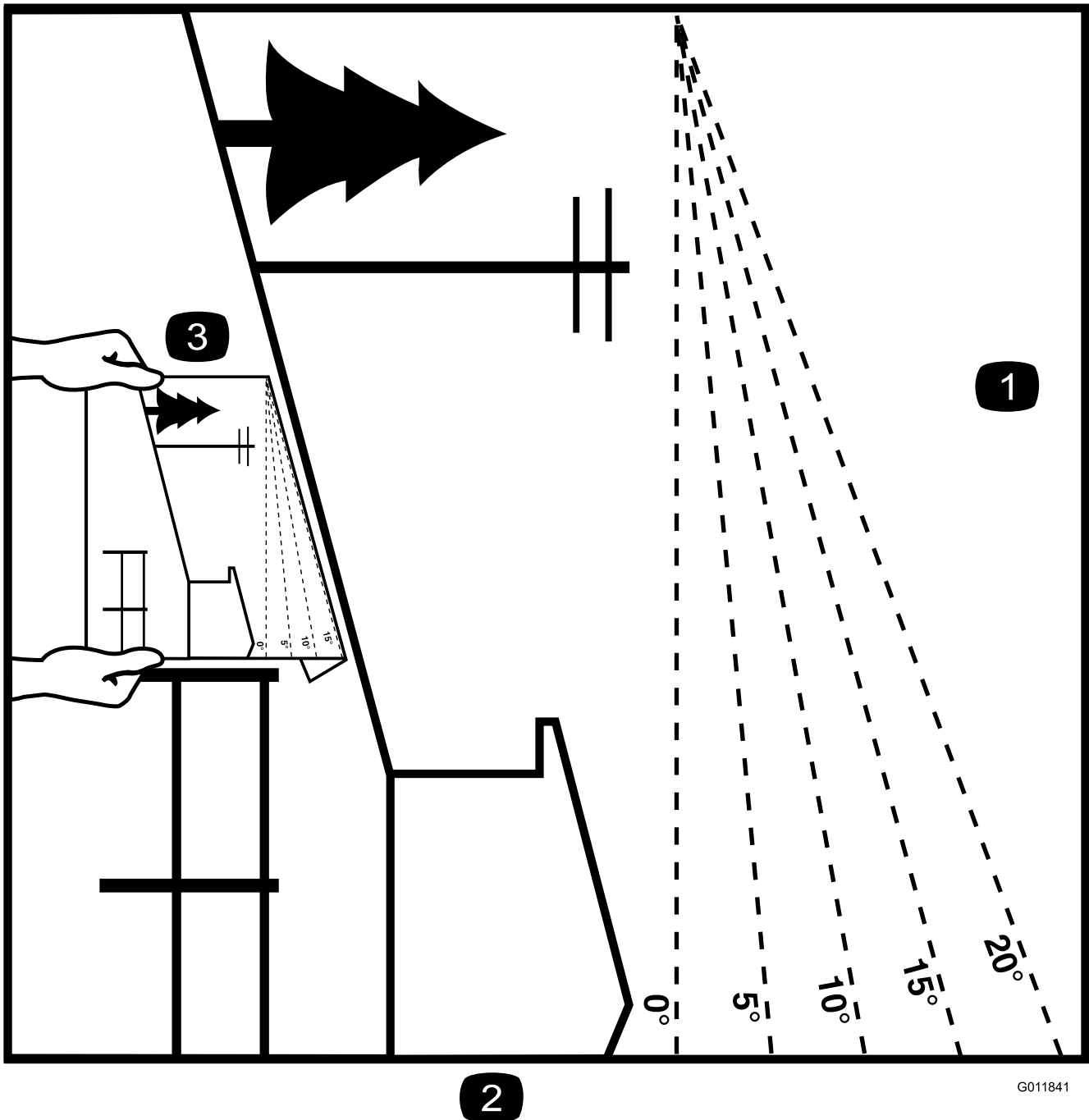
Measured vibration level for right hand = 2.8 m/s²

Measured vibration level for left hand = 2.1 m/s²

Uncertainty Value (K) = 1.4 m/s²

Measured values were determined according to the procedures outlined in EN ISO 5395:2013.

Slope Indicator



G011841

2

Figure 3

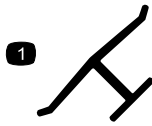
This page may be copied for personal use.

1. The maximum slope you can safely operate the machine on is **20 degrees**. Use the slope chart to determine the degree of slope of hills before operating. **Do not operate this machine on a slope greater than 20 degrees**. Fold along the appropriate line to match the recommended slope.
2. Align this edge with a vertical surface, a tree, building, fence pole, etc.
3. Example of how to compare slope with folded edge.

Safety and Instructional Decals

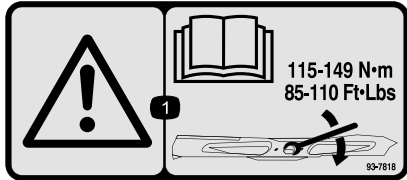


Safety decals and instructions are easily visible to the operator and are located near any area of potential danger. Replace any decal that is damaged or lost.



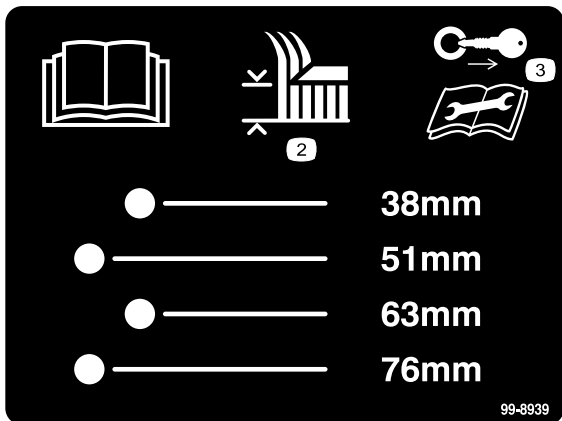
Manufacturer's Mark

1. Indicates the blade is identified as a part from the original machine manufacturer.



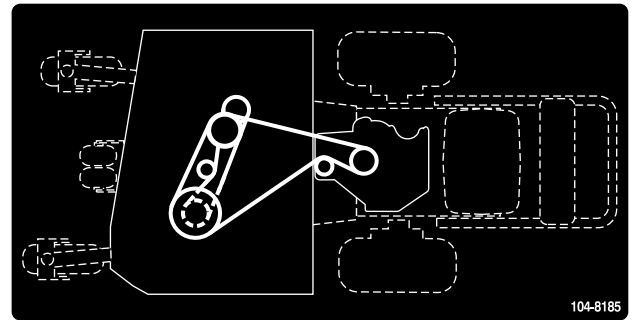
93-7818

1. Warning—read the *Operator's Manual* for instructions on torquing the blade bolt/nut to 115-149 N-m (85-110 ft-lb).

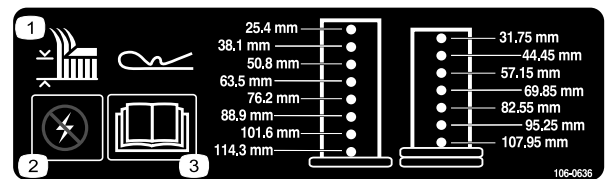


99-8939

1. Read the *Operator's Manual*.
2. Height of cut
3. Remove the ignition key and read the instructions before servicing or performing maintenance.



104-8185



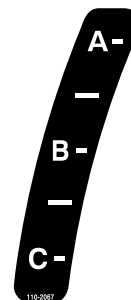
106-0636

1. Height-of-cut
2. Warning—power
3. Read the *Operator's Manual* for more information.









106-5517

1. Warning—Do Not touch the hot surface.



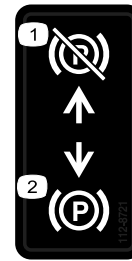
110-2067

ADJUSTABLE BAFFLE BAFLE AJUSTABLE

A	<ul style="list-style-type: none"> • Short, light grass • Dry conditions • Maximum dispersion 	 	<ul style="list-style-type: none"> • <i>Césped corto y ligero</i> • <i>Condiciones secas</i> • <i>Maxima dispersion</i>
B	<ul style="list-style-type: none"> • Bagging setting 	 	<ul style="list-style-type: none"> • <i>Posicion para usar con bolsa</i>
C	<ul style="list-style-type: none"> • Tall, dense grass • Wet conditions • Maximum ground speed 	 	<ul style="list-style-type: none"> • <i>Césped alto y denso</i> • <i>Condiciones mojadas</i> • <i>Maxima velocidad</i>

110-2068

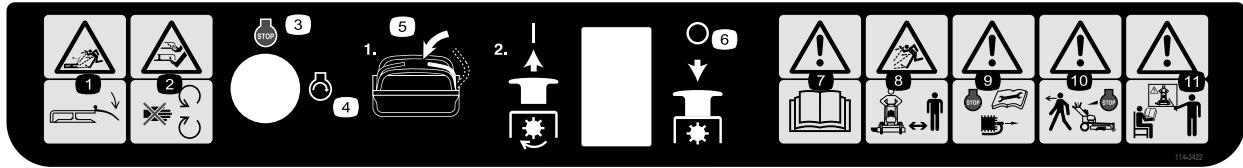
110-2068



112-8721

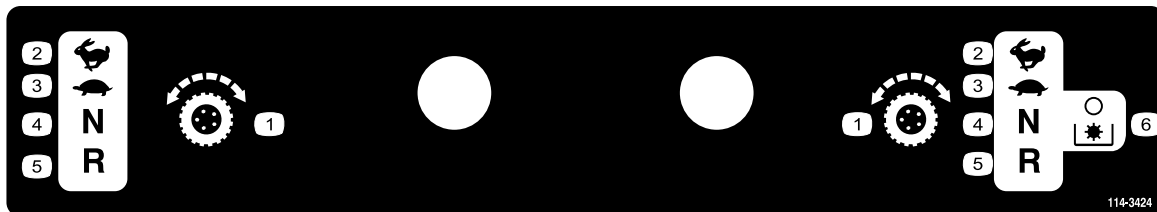
1. Parking brake—off
2. Parking brake—on

1. Read the *Operator's Manual*.



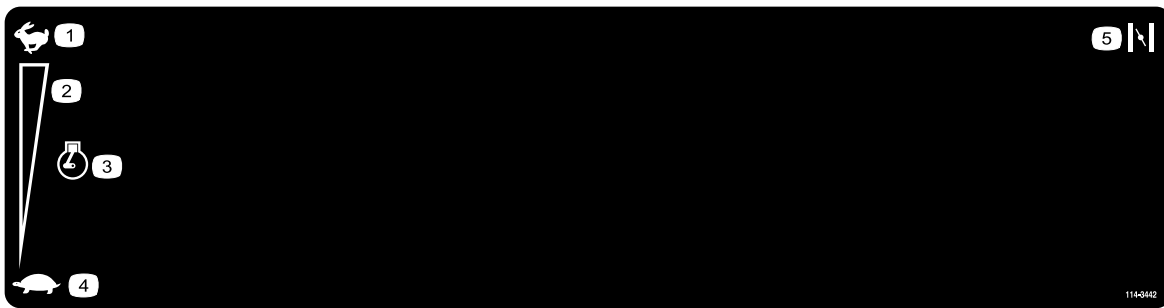
114-3422

- | | | | |
|---|--|---|--|
| <ol style="list-style-type: none"> 1. Thrown object hazard—keep deflector in place. 2. Cutting, dismemberment hazard of hand or foot—stay away from moving parts. 3. Engine—stop | <ol style="list-style-type: none"> 4. Engine—start 5. Move the motion control lever to the neutral position, then pull out on PTO (Power Take Off) switch to engage the blades. 6. Push in on the PTO (Power Take Off) to disengage the blades. | <ol style="list-style-type: none"> 7. Warning—read the <i>Operator's Manual</i>. 8. Thrown object hazard—keep bystanders a safe distance from the machine. 9. Warning—stop the engine and remove the spark plug wire before performing any maintenance on the machine. | <ol style="list-style-type: none"> 10. Warning—stop the engine before leaving the machine. 11. Warning—do not operate this machine unless you are trained. |
|---|--|---|--|



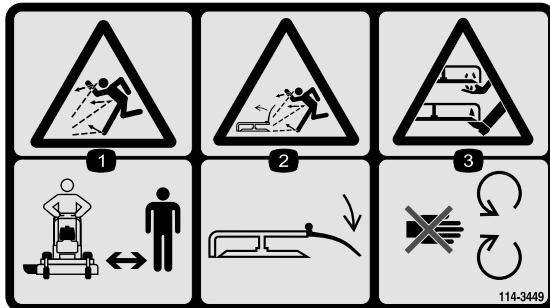
114-3424

- | | | |
|--|---|---|
| <ol style="list-style-type: none"> 1. Traction control 2. Fast | <ol style="list-style-type: none"> 3. Slow 4. Neutral | <ol style="list-style-type: none"> 5. Reverse 6. Disengage the PTO (Power Take-off) |
|--|---|---|



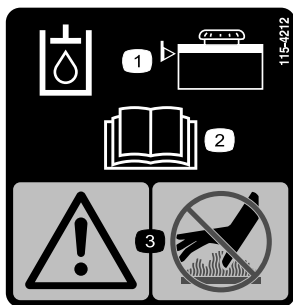
114-3442

- 1. Fast
- 2. Continuous variable setting
- 3. Engine
- 4. Slow
- 5. Choke



114-3449

- 1. Thrown object hazard—keep bystanders a safe distance from the machine.
- 2. Thrown object hazard, mower—keep the deflector in place.
- 3. Cutting/dismemberment of hand or foot—stay away from moving parts.



115-4212

- 1. Hydraulic oil level
- 2. Read the *Operator's Manual*.
- 3. Warning—do not touch the hot surface.



119-0217

- 1. Warning—stop the engine; stay away from moving parts; keep all guards and shields in place.

Product Overview

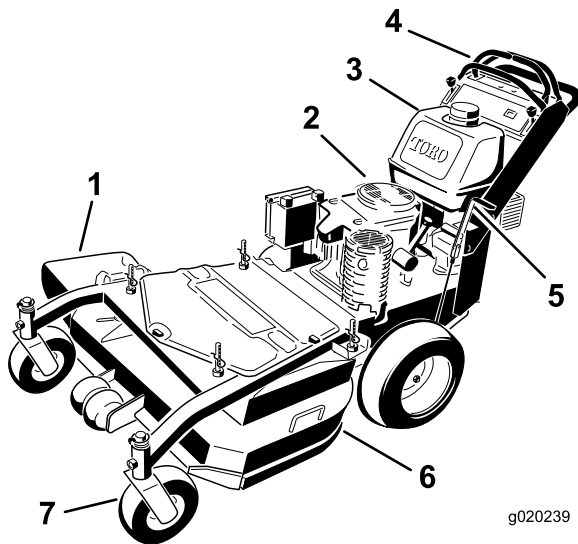


Figure 4

- | | |
|-------------------------|-----------------------|
| 1. Side-discharge chute | 5. Parking brake |
| 2. Engine | 6. Mower deck |
| 3. Gas tank | 7. Front caster wheel |
| 4. Controls | |

Controls

Become familiar with all the controls (Figure 5) before you start the engine and operate the machine.

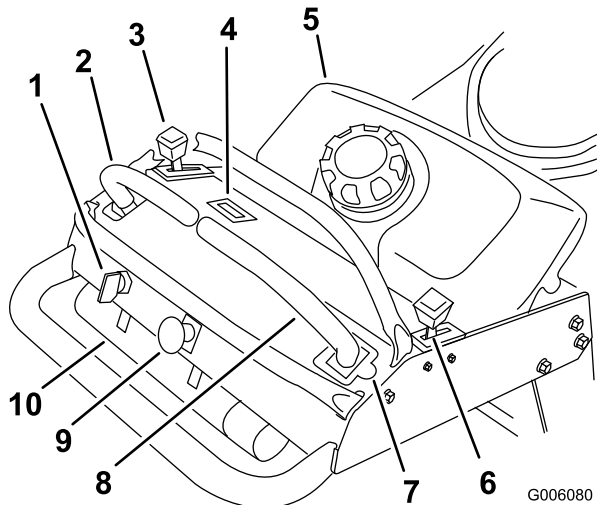


Figure 5

- | | |
|------------------------------|---|
| 1. Ignition switch | 6. Choke |
| 2. Left motion-control lever | 7. Neutral-Lock position for the right motion-control lever |
| 3. Throttle control | 8. Right motion-control lever |
| 4. Hour meter | 9. Blade-control switch (PTO) |
| 5. Fuel tank | 10. Operator-manual tube |

Throttle Control

The throttle control has 2 positions: **Fast** and **Slow**.

Choke

Use the choke to start a cold engine.

Blade-Control Switch (PTO)

The blade-control switch (PTO) is used to engage the electric clutch to drive the mower blades with the right motion-control lever in the center, unlocked position. Pull the switch up to engage the blades and release. To disengage the blades, push the blade-control switch (PTO) down or move or release the right motion-control lever into the Neutral-Lock position.

Ignition Switch

This switch is used to start the mower engine and has 3 positions: Start, Run, and Off.

Motion-Control Levers

The motion-control levers are used to drive the machine forward, reverse, and turn either direction.

Neutral-Lock Position

The Neutral-Lock position is used with the safety interlock system to engage and disengage the mower blades and to determine the Neutral position.

Fuel Shut-off Valve

Close the fuel shut-off valve (under the fuel tank) when transporting or storing the mower.

Hour Meter

Shows the total hours the machine has been operated. This operates only when the mower blades are operating.

The hour meter will flash 3 hours before and after a service interval. The service intervals are set for the first 8 hours, every 100 hours there after, and every 400 hours.

Note: Make sure maintenance is done at all recommended intervals shown in the Recommended Maintenance Schedule.

Attachments/Accessories

A selection of Toro approved attachments and accessories is available for use with the machine to enhance and expand its capabilities. Contact your Authorized Service Dealer or Distributor or go to www.Toro.com for a list of all approved attachments and accessories.

Specifications

Note: Specifications and design are subject to change without notice.

Width with deflector down	130 cm (51-1/8 inches)
Length	199 cm (78-1/2 inches)
Height	117 cm (46 inches)
Weight	303 kg (667 lb)

Operation

Adding Fuel

- For best results, use only clean, fresh, unleaded gasoline with an octane rating of 87 or higher ((R+M)/2 rating method).
- Oxygenated fuel with up to 10% ethanol or 15% MTBE by volume is acceptable.
- **Ethanol:** Gasoline with up to 10% ethanol (gasohol) or 15% MTBE (methyl tertiary butyl ether) by volume is acceptable. Ethanol and MTBE are not the same. Gasoline with 15% ethanol (E15) by volume is not approved for use. **Never use gasoline that contains more than 10% ethanol by volume**, such as E15 (contains 15% ethanol), E20 (contains 20% ethanol), or E85 (contains up to 85% ethanol). Using unapproved gasoline may cause performance problems and/or engine damage which may not be covered under warranty.
- **Do not** use ethanol blends of gasoline (such as E15 or E85) with more than 10% ethanol by volume. Performance problems and/or engine damage may result which may not be covered under warranty.
- **Do not** use gasoline containing methanol.
- **Do not** store fuel either in the fuel tank or fuel containers over the winter unless a fuel stabilizer is used.
- **Do not** add oil to gasoline.

⚠ DANGER

In certain conditions, gasoline is extremely flammable and highly explosive. A fire or explosion from gasoline can burn you and others and can damage property.

- **Fill the fuel tank outdoors, in an open area, when the engine is cold. Wipe up any gasoline that spills.**
- **Never fill the fuel tank inside an enclosed trailer.**
- **Do not fill the fuel tank completely full. Add gasoline to the fuel tank until the level is 6 to 13 mm (1/4 to 1/2 inch) below the bottom of the filler neck. This empty space in the tank allows gasoline to expand.**
- **Never smoke when handling gasoline, and stay away from an open flame or where gasoline fumes may be ignited by a spark.**
- **Store gasoline in an approved container and keep it out of the reach of children. Never buy more than a 30-day supply of gasoline.**
- **Do not operate without entire exhaust system in place and in proper working condition.**

⚠ DANGER

In certain conditions during fueling, static electricity can be released causing a spark which can ignite the gasoline vapors. A fire or explosion from gasoline can burn you and others and can damage property.

- Always place gasoline containers on the ground away from your vehicle before filling.
- Do not fill gasoline containers inside a vehicle or on a truck or trailer bed because interior carpets or plastic truck bed liners may insulate the container and slow the loss of any static charge.
- When practical, remove gas-powered equipment from the truck or trailer and refuel the equipment with its wheels on the ground.
- If this is not possible, then refuel such equipment on a truck or trailer from a portable container, rather than from a gasoline dispenser nozzle.
- If a gasoline dispenser nozzle must be used, keep the nozzle in contact with the rim of the fuel tank or container opening at all times until fueling is complete.

⚠ WARNING

Gasoline is harmful or fatal if swallowed. Long-term exposure to vapors can cause serious injury and illness.

- Avoid prolonged breathing of vapors.
- Keep face away from nozzle and gas tank or conditioner opening.
- Keep gas away from eyes and skin.

Using Stabilizer/Conditioner

Use a fuel stabilizer/conditioner in the machine to provide the following benefits:

- Keeps gasoline fresh during storage of 90 days or less. For longer storage it is recommended that the fuel tank be drained.
- Cleans the engine while it runs
- Eliminates gum-like varnish buildup in the fuel system, which causes hard starting

Important: Do not use fuel additives containing methanol or ethanol.

Add the correct amount of gas stabilizer/conditioner to the gas.

Note: A fuel stabilizer/conditioner is most effective when mixed with fresh gasoline. To minimize the chance of varnish deposits in the fuel system, use fuel stabilizer at all times.

Filling the Fuel Tank

1. Shut the engine off and set the parking brake.
2. Clean around each fuel tank cap and remove the cap.
3. Add unleaded regular gasoline to both fuel tanks, until the level is 6 to 13 mm (1/4 to 1/2 inch) below the bottom of the filler neck.

This space in the tank allows gasoline to expand. Do not fill the fuel tanks completely full.
4. Install fuel tank caps securely.
5. Wipe up any gasoline that may have spilled.

Checking the Engine-Oil Level

Before you start the engine and use the machine, check the oil level in the engine crankcase; refer to [Checking Oil Level in Engine Maintenance \(page 21\)](#).

Note: Determine the left and right sides of the machine from the normal operating position.

Putting Safety First

Carefully read all the safety instructions and decals in the safety section. Knowing this information could help you or any bystanders avoid injury.

The use of protective equipment for eyes, hearing, feet, and head is recommended.

⚠ CAUTION

This machine produces sound levels in excess of 85 dBA at the operator's ear and can cause hearing loss through extended periods of exposure.

Wear hearing protection when operating this machine.

Operating the Parking Brake

Always set the parking brake when you stop the machine or leave it unattended. Before each use, check the parking brake for proper operation.

If the parking brake does not hold securely, adjust it. Refer to [Servicing the Brakes \(page 29\)](#).

⚠ CAUTION

Children or bystanders may be injured if they move or attempt to operate the machine while it is unattended.

Always remove the ignition key and set the parking brake when leaving the machine unattended, even if just for a few minutes.

Setting the Parking Brake

Pull the parking brake lever rearward (Figure 6).

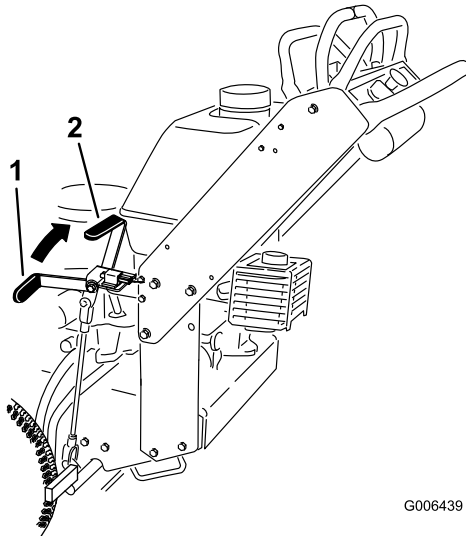


Figure 6

1. Parking brake lever (in the released position)
2. Parking brake lever (in the engaged position)

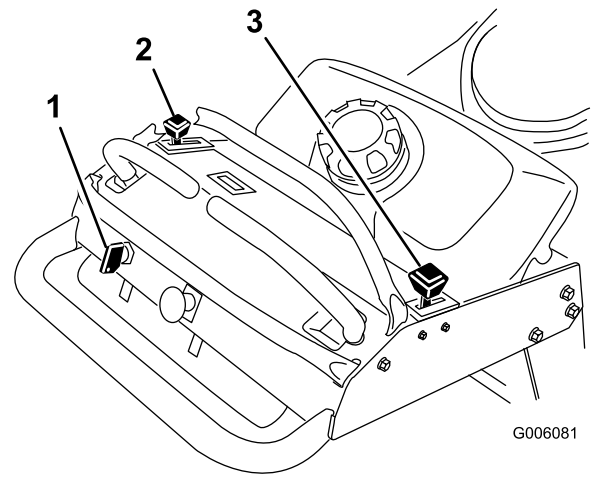


Figure 7

1. Ignition switch
2. Throttle lever
3. Choke

Releasing the Parking Brake

Push the parking brake lever forward.

Starting and Stopping the Engine

Starting the Engine

1. Connect the wires to the spark plugs.
2. Open the fuel valve.
3. Set the parking brake.
4. Move the throttle control to fast and move the choke lever to the on position before starting a cold engine (Figure 7).

Note: A warm or hot engine may not require choking. To start a warm engine, move throttle control midway between the Fast and Slow positions.

5. Turn the ignition key to the start position to energize the starter. When the engine starts, release the key.

Note: Do not engage the starter for more than 5 seconds at a time. If the engine fails to start, allow for a 15 second cool-down period between attempts. Failure to follow these instructions can burn out the starter motor.

6. When engine starts, move the throttle control between the fast and slow position and move the choke lever to the off position. Allow the engine to warm up and then move the throttle control to the fast position.

Stopping the Engine

1. Move the motion-control levers to the Neutral position and move the right motion-control lever into the Neutral-Lock position.
2. Move the throttle lever to slow (Figure 7).
3. If the engine has been working hard or is hot, let the engine idle for 30 to 60 seconds before turning the engine off.
4. To stop the engine, turn the ignition key to off.

Important: Make sure fuel shut off valve is closed before transporting or storing the machine, as fuel leakage may occur. Before storing the machine, pull wire off spark plug(s) to prevent possibility of accidental starting.

Operating the Mower Blade Control (PTO)

The blade-control switch (PTO) is used in conjunction with the right motion-control lever to engage and disengage the mower blades.

Engaging the Mower Blades (PTO)

1. To engage the mower blades, move the right motion-control lever to the center, unlocked position (Figure 8).
2. Pull the blade-control switch (PTO) up and release it while holding down the right motion-control lever in the center, unlocked position.

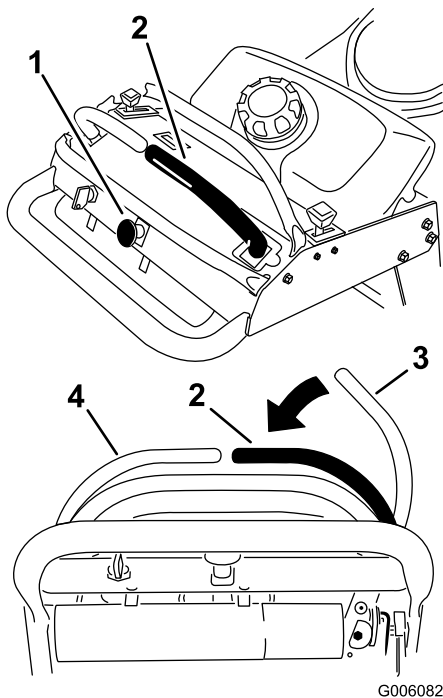


Figure 8

- | | |
|--|--|
| 1. Blade-control switch (PTO) | 3. Right motion-control lever in Neutral-Lock position |
| 2. Right motion-control lever pushed down into the center, unlocked position | 4. Left motion-control lever |

Disengaging the Mower Blades (PTO)

The following are 2 options for disengaging the mower blades.

- Push the blade-control switch (PTO) down to the Off position.
- Move the motion-control levers to the Neutral position and move the right motion-control lever into the Neutral-Lock position.

The Safety-Interlock System

⚠ CAUTION

If the safety-interlock switches are disconnected or damaged, the machine could operate unexpectedly, causing personal injury.

- Do not tamper with the interlock switches.
- Check the operation of the interlock switches daily and replace any damaged switches before operating the machine.

Understanding the Safety-Interlock System

The safety-interlock system is designed to prevent the mower blades from rotating unless:

- The right motion-control lever is moved to the center, unlocked position.
- The blade-control switch (PTO) is pulled to the On position.

The safety-interlock system is designed to stop the mower blades if you move or release the right motion-control lever into the Neutral-Lock position.

Testing the Safety-Interlock System

Service Interval: Before each use or daily

Note: If the safety system does not operate as described below, have an Authorized Service Dealer repair the safety system immediately.

1. Start the engine; refer to Starting and Stopping the Engine in [Starting and Stopping the Engine \(page 13\)](#).
2. Set the parking brake.
3. Move the right motion-control lever to the center, unlocked position.

Note: The blades should not rotate.

4. Move the motion-control levers forward.

Note: The engine should kill.

5. Start the engine and release the parking brake.
6. Move the right motion-control lever to the center, unlocked position.
7. Continue holding the right motion-control lever in the center, unlocked position and pull up on the blade-control switch (PTO) and release.

Note: The clutch should engage and the mower blades begin rotating.

8. Move or release the right motion-control lever into the Neutral-Lock position.

Note: The blades should stop rotating.

9. Move the right motion-control lever to the center, unlocked position.

- Continue holding the right motion-control lever in the center, unlocked position and pull up on the blade control switch (PTO) and release.

The clutch should engage and the mower blades begin rotating.

- Push the blade-control switch (PTO) down to the Off position.

Note: The blades should stop rotating.

- With the engine running, pull up the blade-control switch (PTO) and release without holding right motion-control lever to the center, unlocked position.

Note: The blades should not rotate.

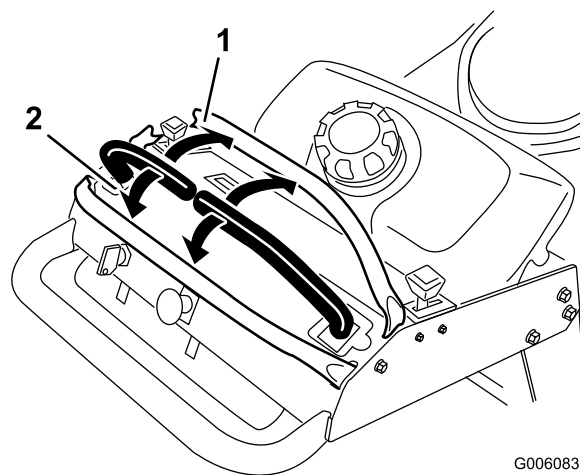


Figure 9

1. Forward

2. Backward

Driving Forward or Backward

The throttle control regulates the engine speed as measured in rpm (revolutions per minute). Place the throttle control in the fast position for best performance. Always operate in the full throttle position when mowing.

⚠ CAUTION

Machine can spin very rapidly. Operator may lose control of machine and cause personal injury or damage to machine.

- Use caution when making turns.
- Slow the machine down before making sharp turns.

Driving Forward

- Release the parking brake; refer to Releasing the Parking Brake in [Starting and Stopping the Engine \(page 13\)](#).
- Move the right motion-control lever to the center, un-locked position.
- To go forward, slowly push the motion-control levers forward ([Figure 9](#)).

Note: The engine will kill if the traction-control levers are moved with the parking brake engaged.

To go straight, apply equal pressure to both motion-control levers ([Figure 9](#)).

To turn, move the motion-control lever toward the Neutral position in the direction you want to turn ([Figure 9](#)).

The farther you move the traction-control levers in either direction, the faster the machine will move in that direction.

To stop, pull the motion-control levers back to the Neutral position.

Driving Backward

- Move the right motion-control lever to the center, unlocked position.
- To go backward, slowly pull the motion-control levers rearward ([Figure 9](#)).

To go straight, apply equal pressure to both motion-control levers ([Figure 9](#)).

To turn, release pressure on the motion-control lever toward the direction you want to turn ([Figure 9](#)).

To stop, push the motion-control levers to the Neutral position.

Stopping the Machine

To stop the machine, move the motion-control levers to the Neutral position, move the right motion-control lever into the Neutral-Lock position, disengage the power take-off (PTO), and turn the ignition key to the Off position.

Set the parking brake when you leave the machine; refer to Setting the Parking Brake in [Starting and Stopping the Engine \(page 13\)](#).

Remove the key from the ignition switch.

⚠ CAUTION

Children or bystanders may be injured if they move or attempt to operate the tractor while it is unattended.

Always remove the ignition key and set the parking brake when leaving the machine unattended, even if just for a few minutes.

Pushing the Machine by Hand

The by-pass valves allow the machine to be pushed by hand without the engine running.

Important: Always push the machine by hand. Never tow the machine because hydraulic damage may occur.

1. Disengage the PTO, move the motion-control levers to the Neutral-Locked position and set the parking brake.
2. Open the by-pass valve on both pumps by turning them counter clockwise 1 to 2 turns. This allows hydraulic fluid to by-pass the pumps and the wheels to turn (Figure 10).

Note: Rotate the by-pass valves a maximum of 2 turns so the valve does not come out of the body causing fluid to run out.

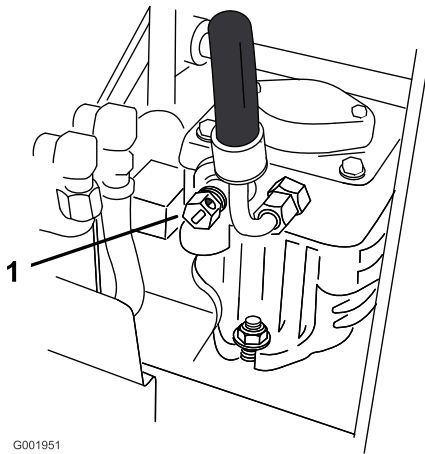


Figure 10

1. Pump by-pass valve
-
3. Release the parking brake.
 4. Push the machine to the desired location.
 5. Set the parking brake.
 6. Close the by-pass valves, but do not overtighten them.

Important: Do not start or operate the machine with the by-pass valves open. Damage to system may occur.

Transporting Machines

Use a heavy-duty trailer or truck to transport the machine. Ensure that the trailer or truck has all necessary brakes, lighting, and marking as required by law. Please carefully read all the safety instructions. Knowing this information could help you, your family, pets, or bystanders avoid injury.

To transport the machine:

1. If using a trailer, connect it to the towing vehicle and connect the safety chains.
2. If applicable, connect the trailer brakes.

3. Load the machine onto the trailer or truck.
4. Stop the engine, remove the key, set the brake, and close the fuel valve.
5. Use the metal tie down loops on the machine to securely fasten the machine to the trailer or truck with straps, chains, cable, or ropes (Figure 11).
6. Fasten the front of the machine to the trailer or truck with straps, chains, cable, or ropes.

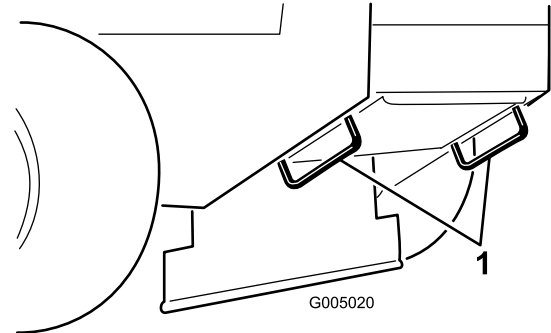


Figure 11

1. Tie down loop

Side Discharging or Mulching the Grass

This mower has a hinged grass deflector that disperses clippings to the side and down toward the turf.

⚠ DANGER

Without the grass deflector, discharge cover, or complete grass catcher assembly mounted in place, you and others are exposed to blade contact and thrown debris. Contact with rotating mower blade(s) and thrown debris will cause injury or death.

- Never remove the grass deflector from the mower because the grass deflector routes material down toward the turf. If the grass deflector is ever damaged, replace it immediately.
- Never put your hands or feet under the mower.
- Never try to clear discharge area or mower blades unless you release the bail and the power take off (PTO) is off. Rotate the ignition key to Off. Also remove the key and pull the wire(s) off the spark plug(s).

Adjusting the Height-of-Cut

The height-of-cut can be adjusted from 25 to 114 mm (1 to 4-1/2 inch) in 6 mm (1/4 inch) increments. Adjustment is done by relocating 4 hairpin cotter pins in different hole location and by adding or removing spacers.

Note: All height-of-cut pins need at least 1 spacer or damage can occur to bushing if none are used.

Note: All height-of-cut pins can use 2 spacers maximum.

1. Select hole in height-of-cut post and number of spacers corresponding to the height-of-cut desired (Figure 12).
2. Using the lift handle, raise side of deck and remove hairpin cotter (Figure 12).
3. Add or remove spacers if needed and then align holes and insert hairpin cotter (Figure 12).

Note: Spare height-of-cut spacers may be stored on posts and retained by a hairpin cotter.

Important: All 4 hairpin cotter pins must be in the same hole location and with the correct number of spacers for a level cut.

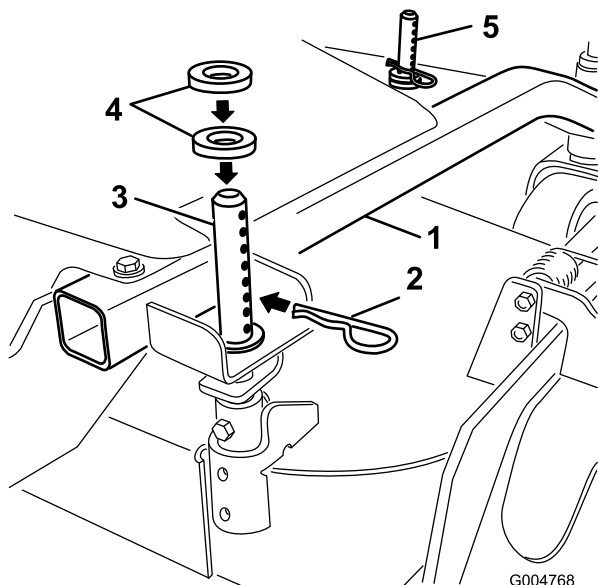


Figure 12

1. Carrier frame
2. Hairpin cotter
3. Back height-of-cut post
4. Spacers
5. Front height-of-cut post

Adjusting the Anti-Scalp Rollers

The anti-scalp rollers need to be adjusted in the proper hole location for each height-of-cut position. There needs to be 10 mm (3/8 inch) minimum clearance above the ground.

Note: If the anti-scalp rollers are adjusted too low it can cause excess wear of the rollers.

1. After adjusting height-of-cut, check the anti-scalp rollers so that there is a minimum of 10 mm (3/8 inch) clearance above the ground (Figure 13).
2. If adjustment is needed, remove the bolt, washers and nut (Figure 13).
3. Select a hole position so the anti-scalp rollers are a minimum of 10 mm (3/8 inch) off the ground (Figure 13).
4. Install the bolt and nut (Figure 13).

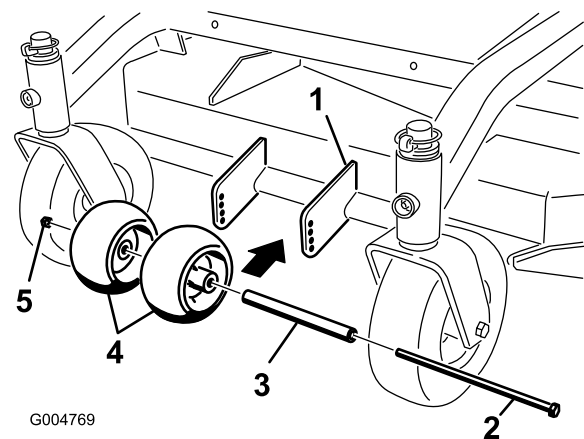


Figure 13

1. Mower deck
2. Bolt
3. Spacer
4. Anti-scalp rollers
5. Nut

5. In certain mowing conditions and terrain, a mismatch of cutting height may be seen. Adjusting the outside anti-scalp rollers to the minimum setting of 10 mm (3/8 inch) will help prevent the mower deck cutting too low on the outside and minimize the mismatch.

Adjusting the Flow Baffle

The mower discharge flow can be adjusted for different types of mowing conditions. Position the cam lock and baffle to give the best quality of cut.

1. Disengage the PTO, move the motion-control levers to the Neutral-Locked position and set the parking brake.
2. Stop the engine, remove the key, and wait for all moving parts to stop before leaving the operating position.
3. To adjust the baffle, loosen the nut (Figure 14).
4. Adjust the baffle and nut in the slot to the desired discharge flow and tighten the nut.

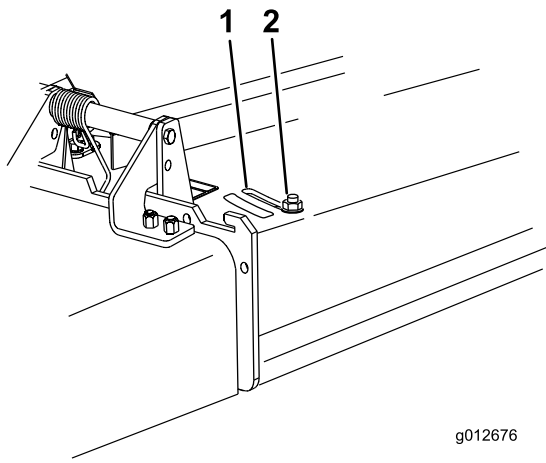


Figure 14

1. Slot 2. Nut

g012676

Position B

Use this position when bagging ([Figure 16](#)).

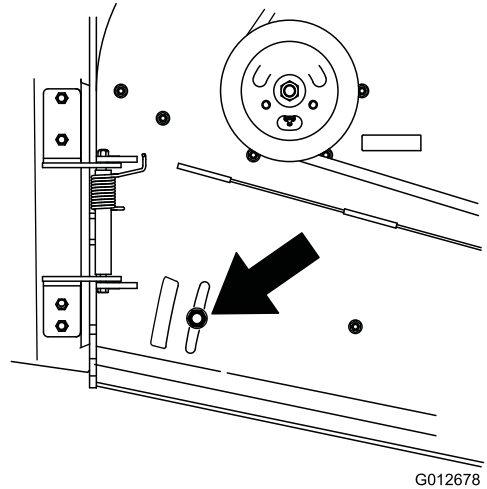


Figure 16

G012678

Positioning the Flow Baffle

The following figures are only recommendations for use. Adjustments will vary by grass type, moisture content, and height of grass.

Note: If the engine power draws down and the mower ground speed is the same, open up the baffle.

Position A

This is the full rear position (see [Figure 15](#)). The suggested use for this position is as follows:

- Use for short, light grass mowing conditions.
- Use in dry conditions.
- For smaller grass clippings.
- Propels grass clippings farther away from the mower.

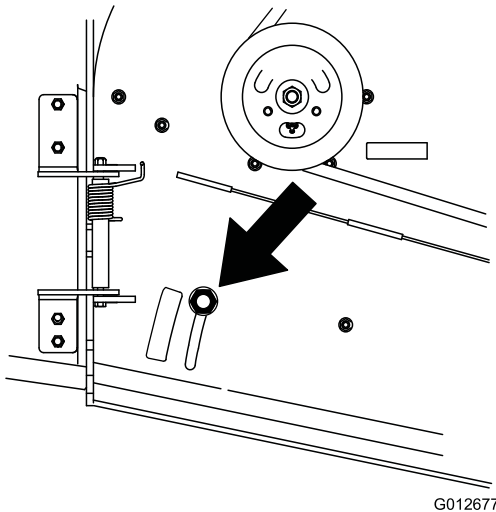


Figure 15

G012677

Position C

This is the full open position. The suggested use for this position is as follows ([Figure 17](#)):

- Use in tall, dense grass mowing conditions.
- Use in wet conditions.
- Lowers the engine power consumption.
- Allows increased ground speed in heavy conditions.

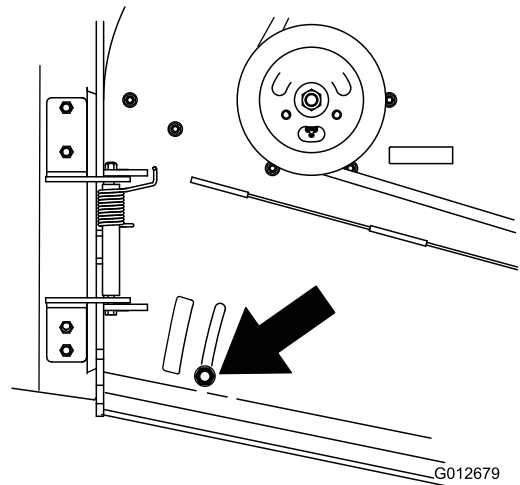


Figure 17

G012679

Maintenance

Note: Determine the left and right sides of the machine from the normal operating position.

Recommended Maintenance Schedule(s)

Maintenance Service Interval	Maintenance Procedure
After the first 8 hours	<ul style="list-style-type: none">• Change the engine oil.• Check the hydraulic fluid.• Change the hydraulic filter.
Before each use or daily	<ul style="list-style-type: none">• Check the safety-interlock system.• Grease the front caster pivot bearing.• Check the engine oil level.• Clean the air intake screen.• Check the brakes.• Inspect the blades.• Clean the mower deck.
Every 25 hours	<ul style="list-style-type: none">• Clean foam air cleaner element.• Check the hydraulic fluid.
Every 50 hours	<ul style="list-style-type: none">• Grease the PTO belt idler.• Check the paper air cleaner element.• Check the tire pressure. or monthly, whichever occurs first.• Inspect the belts for cracks and wear.
Every 100 hours	<ul style="list-style-type: none">• Change the engine oil.• Check the spark plugs.• Adjust the electric clutch.• Check the hydraulic lines.
Every 200 hours	<ul style="list-style-type: none">• Replace the paper air cleaner element.• Change the oil filter.• Replace the fuel filter. or yearly, whichever occurs first.• Change the hydraulic fluid.• Change the hydraulic filter.
Every 400 hours	<ul style="list-style-type: none">• Grease the front wheel bearings (more often in dirty or dusty conditions).
Before storage	<ul style="list-style-type: none">• Paint chipped surfaces.• Perform all maintenance procedures listed above before storage.

Important: Refer to your engine owner's manual for additional maintenance procedures.

▲ CAUTION

If you leave the key in the ignition switch, someone could accidentally start the engine and seriously injure you or other bystanders.

Remove the key from the ignition and disconnect the spark plug wires from the spark plugs before you do any maintenance. Set the wires aside so that they do not accidentally contact the spark plugs.

Lubrication

Grease with No. 2 general-purpose, lithium-based or molybdenum-based grease.

Lubricating the Machine

1. Disengage the PTO and set the parking brake.
2. Stop the engine, remove the key, and wait for all moving parts to stop before leaving the operating position.
3. Clean the grease fittings with a rag. Make sure to scrape any paint off the front of the fitting(s).
4. Connect a grease gun to the fitting. Pump grease into the fittings until grease begins to ooze out of the bearings.
5. Wipe up any excess grease.

Lubricating the Bearings

Service Interval: Before each use or daily—Grease the front caster pivot bearing.

Every 400 hours—Grease the front wheel bearings (more often in dirty or dusty conditions).

Lubricate the front caster wheel bearings and front pivots (Figure 18).

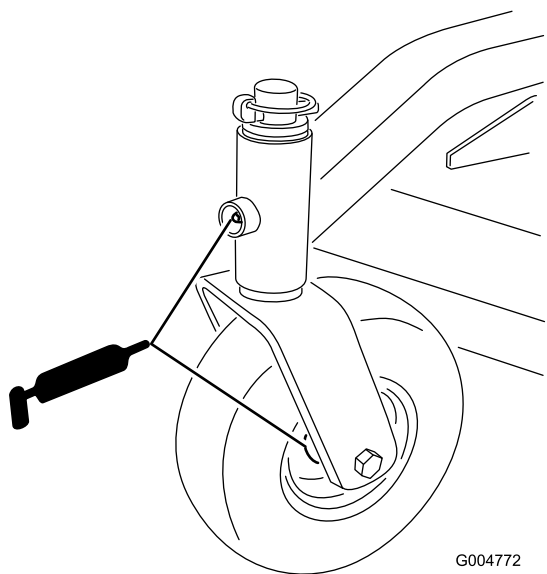


Figure 18

Greasing the PTO Drive Belt Idler

Service Interval: Every 50 hours—Grease the PTO belt idler.

Grease the idler pulley pivot (Figure 19).

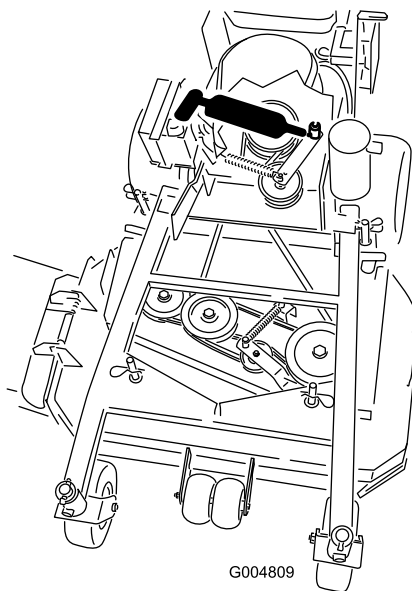


Figure 19

Engine Maintenance

Servicing the Air Cleaner

Service Interval/Specification

Service Interval: Every 25 hours

Every 50 hours

Every 200 hours/Yearly (whichever comes first)

Inspect the foam and paper elements and replace them if they are damaged or excessively dirty.

Note: Service the air cleaner more frequently (every few operating hours) if the operating conditions are extremely dusty or sandy.

Important: Do not oil the foam or paper element.

Removing the Foam and Paper Elements

1. Disengage the PTO and set the parking brake.
2. Stop the engine, remove the key, and wait for all moving parts to stop before leaving the operating position.
3. Clean around the air cleaner to prevent dirt from getting into the engine and causing damage (Figure 20).
4. Unscrew the cover knobs and remove the air cleaner cover (Figure 20).
5. Unscrew the hose clamp and remove the air cleaner assembly (Figure 20).
6. Carefully pull the foam element off the paper element (Figure 20).

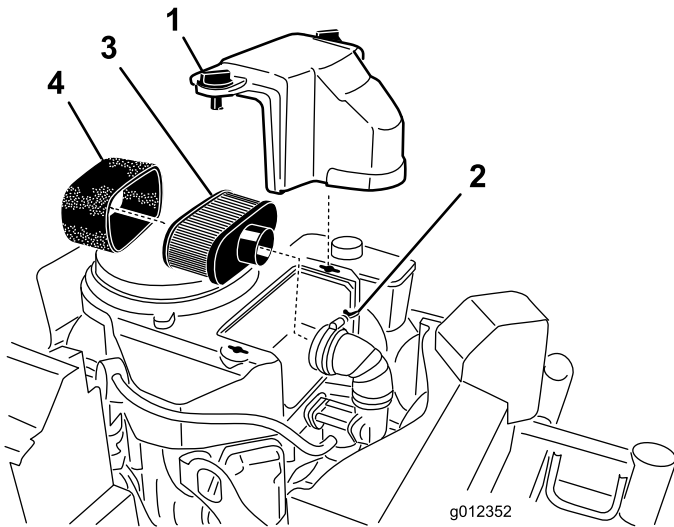


Figure 20

- | | |
|---------------|------------------|
| 1. Cover | 3. Paper element |
| 2. Hose clamp | 4. Foam element |

Cleaning the Foam Air-Cleaner Element

1. Wash the foam element in liquid soap and warm water. When the element is clean, rinse it thoroughly.
2. Dry the element by squeezing it in a clean cloth.

Important: Replace the foam element if it is torn or worn.

Servicing the Paper Air-Cleaner Element

1. Do not clean the paper filter. Replace it (Figure 20).
2. Inspect the element for tears, an oily film, or damage to the rubber seal.
3. Replace the paper element if it is damaged.

Installing the Foam and Paper Elements

Important: To prevent engine damage, always operate the engine with the complete foam and paper air cleaner assembly installed.

1. Carefully slide the foam element onto the paper air cleaner element (Figure 20).
2. Place the air cleaner assembly onto the air cleaner base and secure it with the 2 wing nuts (Figure 20).
3. Place the air cleaner cover into position and tighten the cover knob (Figure 20).

Servicing the Engine Oil

Service Interval: Before each use or daily

After the first 8 hours

Every 100 hours

Every 200 hours—Change the oil filter.

Note: Change the oil more frequently when the operating conditions are extremely dusty or sandy.

Oil Type: Detergent oil (API service SF, SG, SH, or SJ)

Crankcase Capacity: 1.7 L (58 oz) with the filter removed;
1.5 L (51 oz) without the filter removed

Viscosity: Refer to the table (Figure 21).

USE THESE SAE VISCOSITY OILS

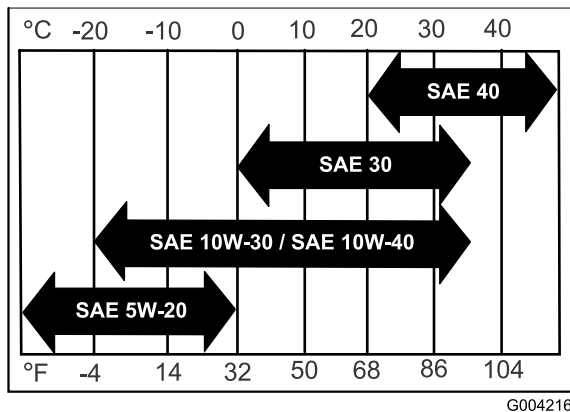


Figure 21

Changing the Engine Oil

1. Start the engine and let it run 5 minutes.
 - Note:** This warms the oil so it drains better.
2. Park the machine so that the drain side is slightly lower than the opposite side to ensure that the oil drains completely.
3. Disengage the PTO and set the parking brake.
4. Stop the engine, remove the key, and wait for all moving parts to stop before leaving the operating position.
5. Slide the drain hose over the oil-drain valve.
6. Place a pan below the drain hose. Rotate the oil-drain valve to allow oil to drain ([Figure 23](#)).
7. When oil has drained completely, close the drain valve.
8. Remove the drain hose ([Figure 23](#)).

Note: Dispose of the used oil at a recycling center.

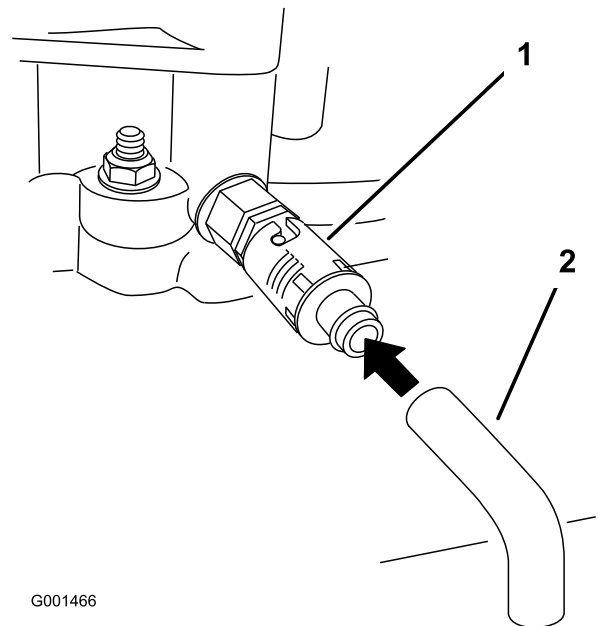


Figure 23

1. Oil-drain valve
2. Oil-drain hose

Checking the Engine-Oil Level

1. Park the machine on a level surface.
2. Disengage the PTO and set the parking brake.
3. Stop the engine, remove the key, and wait for all moving parts to stop before leaving the operating position.
4. Clean around the oil dipstick ([Figure 22](#)) so that dirt cannot fall into the filler hole and damage the engine.

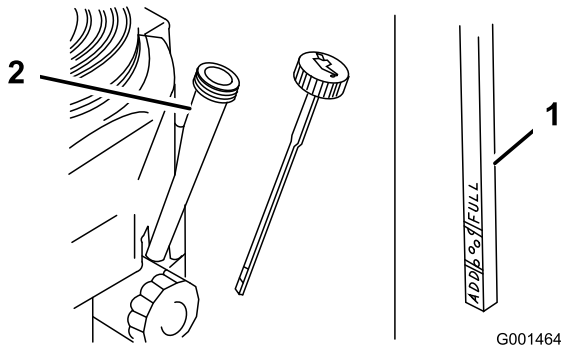


Figure 22

1. Oil dipstick
2. Filler tube

5. Unscrew the oil dipstick and wipe the end clean ([Figure 22](#)).
6. Slide the oil dipstick fully into the filler tube, but do not thread onto tube ([Figure 22](#)).
7. Pull the dipstick out and look at the end. If the oil level is low, slowly pour only enough oil into the filler tube to raise the level to the Full mark.

Important: Do not overfill the crankcase with oil and run the engine; engine damage can result.

9. Slowly pour approximately 80% of the specified oil into the filler tube ([Figure 22](#)).
10. Check the oil level; refer to [Checking the Engine-Oil Level](#) (page 12).
11. Slowly add the additional oil to bring it to the Full mark.

Changing the Oil Filter

Note: Change the oil filter more frequently when the operating conditions are extremely dusty or sandy.

1. Drain the oil from the engine; refer to [Changing the Engine Oil](#) (page 22).
2. Remove the old filter ([Figure 24](#)).

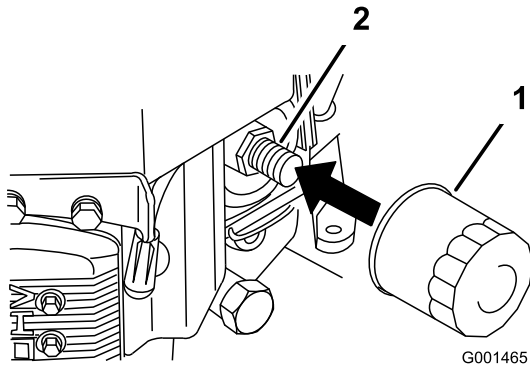


Figure 24

1. Oil filter
2. Adapter

3. Apply a thin coat of new oil to the rubber gasket on the replacement filter ([Figure 24](#)).
4. Install the replacement oil filter to the filter adapter, turn the oil filter clockwise until the rubber gasket contacts the filter adapter, then tighten the filter an additional 3/4 turn ([Figure 24](#)).
5. Fill the crankcase with the proper type of new oil; refer to [Servicing the Engine Oil](#) (page 21).
6. Run the engine for about 3 minutes, stop the engine, and check for oil leaks around the oil filter and drain valve.
7. Check the engine oil level and add oil if needed.
8. Wipe up any spilled oil.

Servicing the Spark Plugs

Service Interval/Specification

Service Interval: Every 100 hours

Ensure that the air gap between the center and side electrodes is correct before installing the spark plug. Use a spark plug wrench for removing and installing the spark plugs and a gapping tool/feeler gauge to check and adjust the air gap. Install a new spark plug if necessary.

Type: Champion® RCJ8Y or equivalent Air Gap: 0.75 mm (0.030 inch)

Removing the Spark Plugs

1. Disengage the PTO and set the parking brake.
2. Stop the engine, remove the key, and wait for all moving parts to stop before leaving the operating position.
3. Disconnect the wires from the spark plugs ([Figure 25](#)).

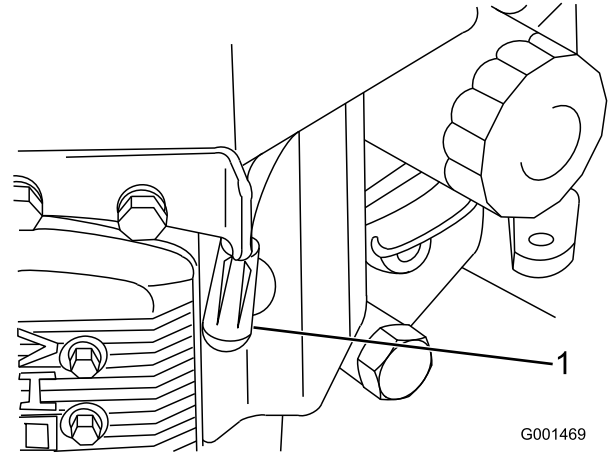


Figure 25

1. Spark-plug wire/spark plug

4. Clean around the spark plugs to prevent dirt from falling into the engine and potentially causing damage.
5. Remove the spark plugs and the metal washers.

Checking the Spark Plugs

1. Look at the center of the spark plugs ([Figure 26](#)). If you see light brown or gray on the insulator, the engine is operating properly. A black coating on the insulator usually means that the air cleaner is dirty.
2. If needed, clean the spark plug with a wire brush to remove carbon deposits.

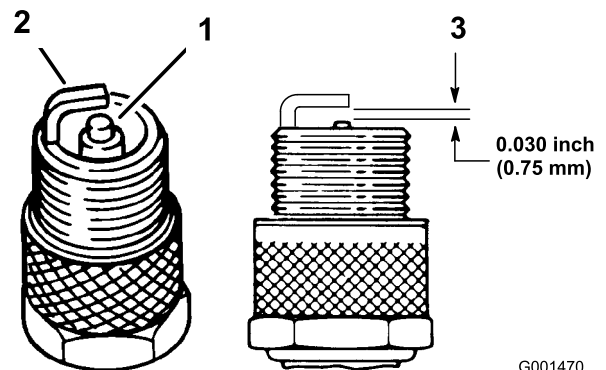


Figure 26

1. Center-electrode insulator
2. Side electrode
3. Air gap (not to scale)

Important: Always replace the spark plugs when it has worn electrodes, an oily film on it, or has cracks in the porcelain.

3. Check the gap between the center and side electrodes (Figure 26). Bend the side electrode (Figure 26) if the gap is not correct.

Installing the Spark Plugs

1. Install the spark plugs and the metal washer.

Note: Ensure that the air gap is set correctly (Figure 26).

2. Tighten the spark plugs to 22 N-m (16 ft-lb).
3. Connect the wires to the spark plugs (Figure 26).

Fuel System Maintenance

Draining the Fuel Tank

⚠ DANGER

In certain conditions, gasoline is extremely flammable and highly explosive. A fire or explosion from gasoline can burn you and others and can damage property.

- Drain gasoline from the fuel tank when the engine is cold. Do this outdoors in an open area. Wipe up any gasoline that spills.
 - Never smoke when draining gasoline, and stay away from an open flame or where a spark may ignite the gasoline fumes.
1. Park the machine on a level surface, to ensure that the fuel tank drains completely.
 2. Disengage the power take-off (PTO), set the parking brake, turn the ignition key to the Off position, and remove the key.
 3. Close the fuel shut-off valve at the fuel tank (Figure 27).

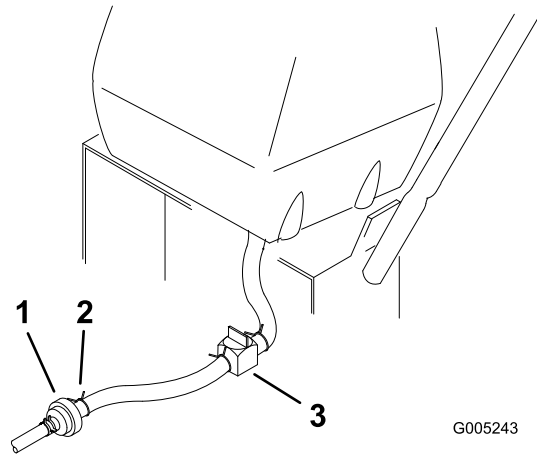


Figure 27

1. Fuel filter
2. Clamp
3. Fuel shut-off valve

4. Squeeze the ends of the hose clamp together and slide it up the fuel line away from fuel filter (Figure 27).
5. Pull the fuel line off the fuel filter (Figure 27).
6. Open the fuel shut-off valve and allow the gasoline to drain into a gas can or drain pan.

Note: Now is the best time to install a new fuel filter because the fuel tank is empty. Refer to [Replacing the Fuel Filter \(page 25\)](#).

7. Install the fuel line onto the fuel filter.

8. Slide the hose clamp close to the valve to secure the fuel line.
9. Wipe up any spilled fuel.

Replacing the Fuel Filter

Service Interval: Every 200 hours or yearly, whichever occurs first.

Never install a dirty filter if it is removed from the fuel line.

Note: Note how the fuel filter is installed in order to install the new filter correctly.

Note: Wipe up any spilled fuel.

1. Disengage the PTO and set the parking brake.
2. Stop the engine, remove the key, and wait for all moving parts to stop before leaving the operating position.
3. Close fuel shut-off valve at the fuel tank (Figure 28).
4. Squeeze the ends of the hose clamps together and slide them away from the filter (Figure 28).

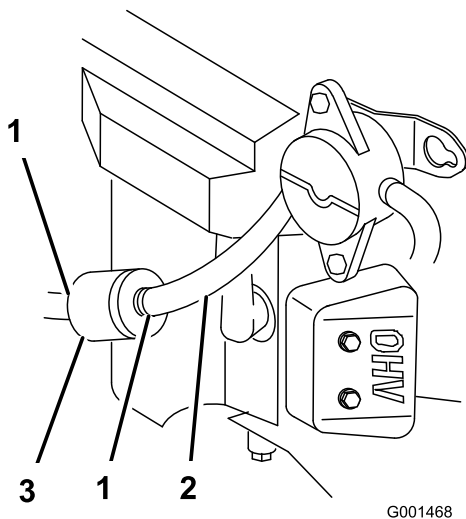


Figure 28

1. Hose clamp
2. Fuel line
3. Filter

5. Remove the filter from the fuel lines.
6. Install a new filter and move the hose clamps close to the filter.
7. Open fuel shut-off valve at fuel tank (Figure 28).
8. Check for fuel leaks and repair if needed.
9. Wipe up any spilled fuel.

Electrical System Maintenance

Servicing the Fuses

The electrical system is protected by fuses. It requires no maintenance. If a fuse blows, check the component or circuit for a malfunction or short.

1. Remove the cover under the control panel.
2. Pull out on the fuse to remove or replace it (Figure 29).
3. Install the cover under the control panel.

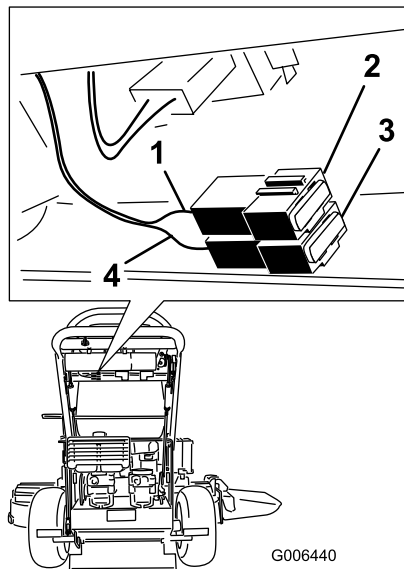


Figure 29

1. Fuse, 10 amp, blade type
2. Fuse, 20 amp, blade type

Drive System Maintenance

Adjusting the Tracking

If the machine does not track straight, adjustment is required.

1. Check the rear tire pressure. Refer to [Checking the Tire Pressure](#) (page 26).
2. Loosen the wing nuts on the right control rod and rotate the turnbuckle in or out to ensure the right control lever is centered in the Neutral-Lock position.
3. Secure the turnbuckle in position with the wing nuts ([Figure 30](#)).

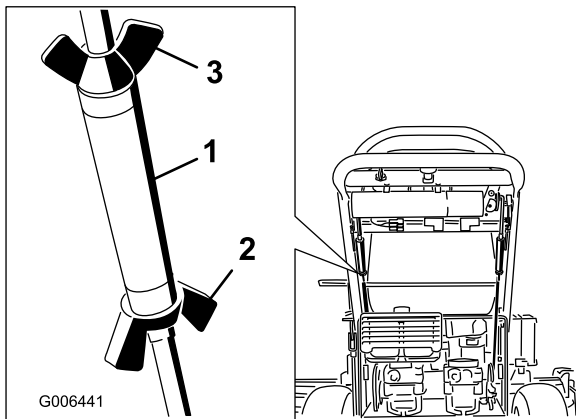


Figure 30

1. Turnbuckle
2. Bottom wing nut
3. Top wing nut (left hand threaded)

4. Loosen the wing nuts on the left control rod and rotate the turnbuckle in or out to change the tracking.
5. Secure the turnbuckle in position with the wing nuts ([Figure 30](#)).
6. Check for proper tracking.
7. Adjust the left control rod if a change is needed.

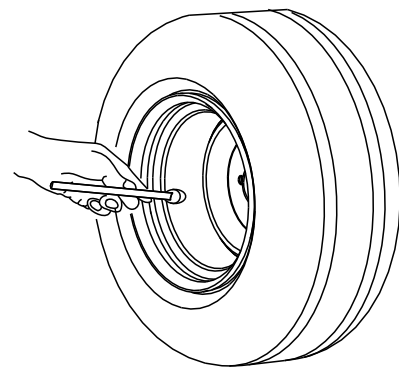
Checking the Tire Pressure

Service Interval: Every 50 hours or monthly, whichever occurs first.

Check the pressure at the valve stem ([Figure 31](#)).

Maintain the air pressure in the rear tires at 83 to 97 kPa (12 to 14 psi). Uneven tire pressure can cause an uneven cut.

Note: The front tires are semi-pneumatic tires and do not require air pressure maintenance.



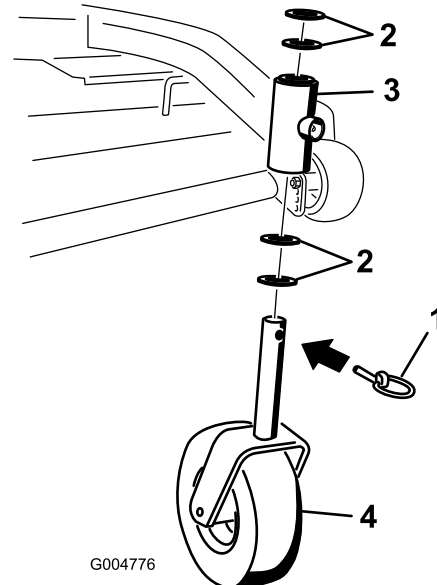
G001055

Figure 31

Replacing the Caster Wheel Fork Bushings

The caster wheel forks are mounted in bushings pressed into the top and bottom of the carrier frame mounting pivot tubes. To check the bushings, move the caster forks back and forth and side-to-side. If a caster fork is loose, the bushings are worn and must be replaced.

1. Raise the cutting unit so the caster wheels are off the floor, then support the front of the mower with jack stands.
2. Remove the locking pin and spacer(s) from the top of the caster wheel fork ([Figure 32](#)).



G004776

Figure 32

1. Locking pin
2. Spacers
3. Carrier-frame pivot tube
4. Caster-wheel fork

3. Pull the caster wheel fork out of the mounting tube, leaving the spacer(s) on the bottom of the fork.
4. Note the location of the spacers on each fork to ensure correct installation, and to maintain a level deck.

5. Insert a pin punch into the mounting tube and carefully drive out the bushings (Figure 33).

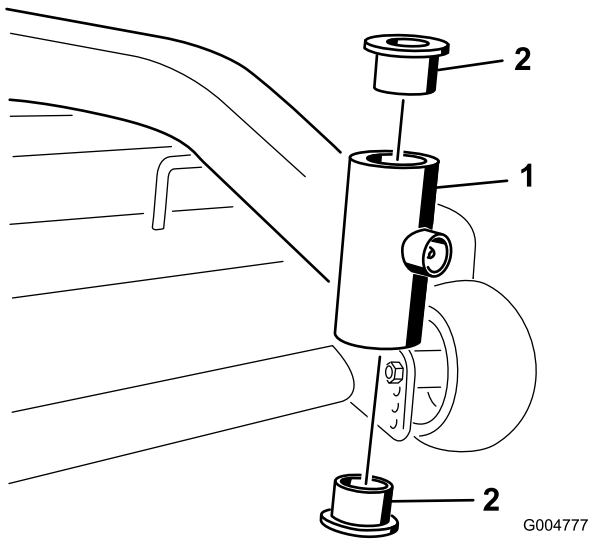


Figure 33

1. Mounting tube
2. Bushing

6. Clean the inside of the mounting tube.
7. Grease the inside and outside of the new bushings.
8. Use a hammer and flat plate to carefully drive the bushings into the pivot tubes.
9. Inspect the caster wheel fork for wear and replace if necessary (Figure 33).
10. Slide the caster wheel fork through the bushings in the mounting tube.
11. Replace the spacer(s) onto the fork and secure with the retaining ring (Figure 33).

Important: The inside diameter of the bushings may collapse slightly when installed. If the caster wheel fork does not slide into the new bushings, ream both bushings to an inside diameter of 1.126 inch (29 mm).

12. Grease the fitting on the carrier frame pivot tubes using No. 2 general-purpose, lithium-based or molybdenum-based grease.

Servicing the Caster Wheel and Bearings

The caster wheels rotate on a roller bearing supported by a spanner bushing. If the bearing is kept well lubricated, wear will be minimal. Failure to keep the bearing well lubricated will cause rapid wear. A wobbly caster wheel usually indicates a worn bearing.

1. Remove the locknut and wheel bolt holding the caster wheel to the caster fork (Figure 34).

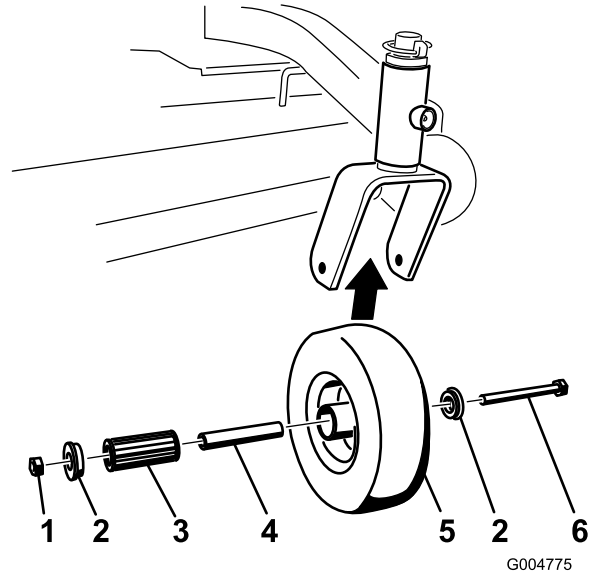


Figure 34

1. Locknut
2. Wheel bolt
3. Bushing
4. Spanner bushing
5. Roller bearing

2. Remove 1 bushing, then pull the spanner bushing and roller bearing out of the wheel hub (Figure 34).
3. Remove the other bushing from the wheel hub and clean any grease and dirt from the wheel hub (Figure 34).
4. Inspect the roller bearing, bushings, spanner bushing, and inside of the wheel hub for wear; replace any defective or worn parts (Figure 34).
5. To assemble, place 1 bushing into the wheel hub. Grease the roller bearing and spanner bushing and slide them into the wheel hub.
6. Place the second bushing into the wheel hub (Figure 34).
7. Install the caster wheel into the caster fork and secure with the wheel bolt and locknut.
8. Tighten the locknut until the spanner bushing bottoms against the inside of the caster forks (Figure 34).
9. Grease the fitting on the caster wheel.

Adjusting the Electric Clutch

Service Interval: Every 100 hours

The clutch is adjustable to ensure proper engagement and proper braking.

1. Insert a 0.381–0.533 mm (0.015–0.021 inch) feeler gauge through 1 inspection slot in the side of the assembly.
Note: Make sure it is between the armature and the rotor friction surfaces.
2. Tighten the locknuts until there is slight binding on the feeler gauge but it can be moved easily within the air gap (Figure 35).
3. Repeat this for the remaining slots.
4. Check each slot again and make slight adjustments until the feeler gauge between the rotor and armature with very slight contact between them.

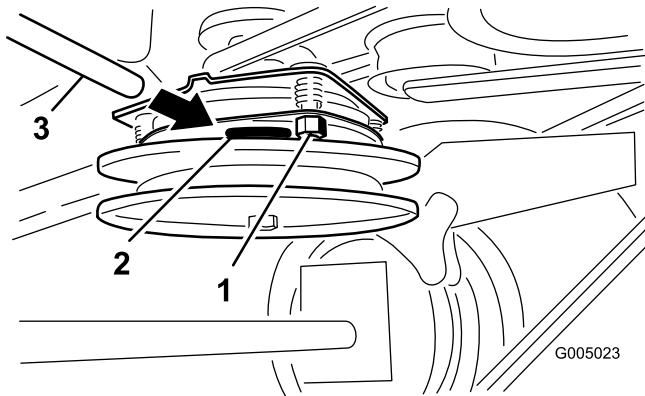


Figure 35

- | | |
|------------------|-----------------|
| 1. Adjusting nut | 3. Feeler gauge |
| 2. Slot | |

Cooling System Maintenance

Cleaning the Air Intake Screen

Service Interval: Before each use or daily

Remove any build-up of grass, dirt, or other debris from the cylinder and cylinder head cooling fins, air intake screen on flywheel end, and carburetor-governor levers and linkage. This will help ensure adequate cooling and correct engine speed and will reduce the possibility of overheating and mechanical damage to the engine.

Brake Maintenance

Servicing the Brakes

Always set the parking brake when you stop the machine or leave it unattended. If the parking brake does not hold securely, an adjustment is required.

Checking the Brakes

Service Interval: Before each use or daily

Check the brakes on both a level surface and slope.

1. Park the machine on a level surface, disengage the PTO.
2. Stop the engine, remove the key, and wait for all moving parts to stop before leaving the operating position.
3. Apply the parking brake.

Note: Setting the parking brake should take a reasonable amount of force. If the parking brake does not hold securely, adjust it. Refer to [Adjusting the Brakes \(page 29\)](#).

Note: When the brake is engaged, the brake handle should be in the 1 o'clock position ([Figure 36](#)).

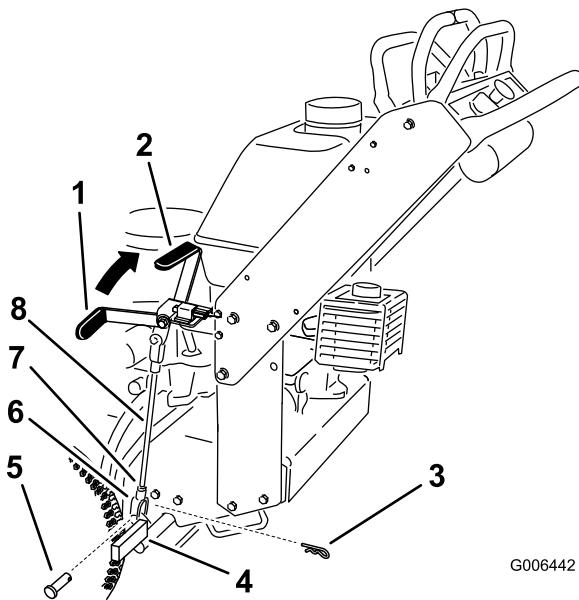


Figure 36

- | | |
|--|---------------|
| 1. Parking brake lever (released position) | 5. Clevis pin |
| 2. One o'clock position | 6. Yoke |
| 3. Hairpin cotter | 7. Jam nut |
| 4. Lower brake lever | 8. Brake rod |

1. Park the machine on a level surface, disengage the PTO, and set the parking brake.
2. Stop the engine, remove the key, and wait for all moving parts to stop before leaving the operating position.
3. Check the brake before you adjust it; refer to [Checking the Brakes \(page 29\)](#).
4. Release the parking brake; refer to [Releasing the Parking Brake \(page 13\)](#).
5. Loosen the top and bottom jam nuts ([Figure 36](#)).
6. To adjust the brake, remove the hair pin cotter and clevis pin from the lower brake lever ([Figure 36](#)).
7. Rotate the brake rod in the yokes.
 - To tighten the brake, lengthen the rod between the yokes.
 - To loosen the brake, shorten the rod between the yokes ([Figure 36](#)).
- Note:** The brake rod should be threaded into both yokes the same distance.
8. Secure the yoke to lower brake lever with the hair pin cotter and clevis pin ([Figure 36](#)).
9. Tighten the top and bottom jam nuts ([Figure 36](#)).
10. Check the brake operation again; refer to [Checking the Brakes \(page 29\)](#).

Adjusting the Brakes

If the parking brake does not hold securely, an adjustment is required.

Belt Maintenance

Inspecting the Belts

Service Interval: Every 50 hours

Check the belts for cracks, frayed edges, burn marks, wear, signs of overheating, or any other damage. Replace any damaged belts.

Replacing the Mower Belt

Important: The fasteners on the covers of this machine are designed to remain with the cover after removal.

1. Disengage the PTO and set the parking brake.
2. Stop the engine, remove the key, and wait for all moving parts to stop before leaving the operating position.
3. Unlatch and remove the carrier frame cover.
4. Remove the belt cover bolts and remove the belt cover.
5. Remove the PTO-drive belt. Refer to [Replacing the PTO-Drive Belt \(page 30\)](#).
6. Disconnect the idler arm spring to relieve tension on the idler arm and idler pulley, then remove the worn mower belt ([Figure 37](#)).
7. Install the new mower belt around the 2 outside spindle pulleys, the idler pulley, and in the lower groove of the double spindle pulley ([Figure 37](#)).
8. Connect the idler arm spring ([Figure 37](#)).
9. Install the PTO-drive belt. Refer to [Replacing the PTO-Drive Belt \(page 30\)](#).
10. Adjust the belt guide an 3 mm (1/8 inch) from the belt ([Figure 37](#)).
11. Install the belt cover onto the cutting unit and secure it with the bolts.
12. Install the carrier frame cover onto the cutting unit and secure the latches.

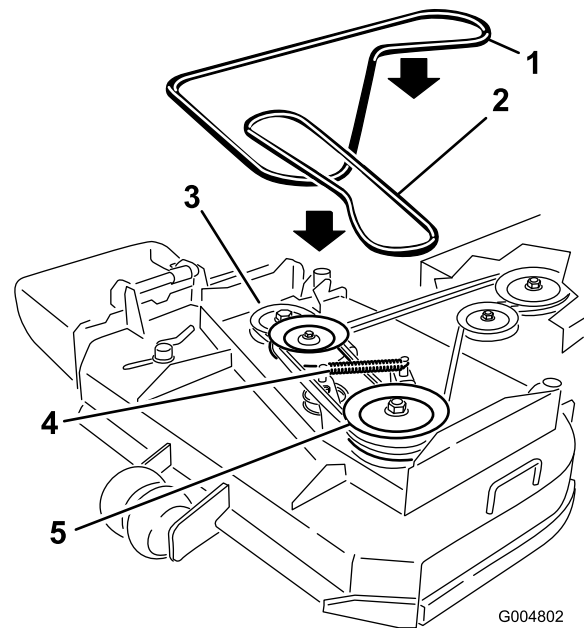


Figure 37

- | | |
|----------------------|----------------------|
| 1. Mower deck belt | 4. Idler arm spring |
| 2. PTO drive belt | 5. Drive belt pulley |
| 3. Drive belt pulley | |

Replacing the PTO-Drive Belt

Important: The fasteners on the covers of this machine are designed to remain with the cover after removal.

1. Disengage the PTO and set the parking brake.
2. Stop the engine, remove the key, and wait for all moving parts to stop before leaving the operating position.
3. Unlatch and remove the carrier frame cover.
4. Remove the belt cover bolts and remove the belt cover.
5. Remove the heat shield from the engine deck and carrier frame.
6. Roll the belt off of the center pulley on the mower deck ([Figure 38](#)).

Important: Use caution when removing the belt as tension will increase because of the spring loaded idler pulley.

7. Remove the belt from the engine pulley and the spring loaded idler pulley ([Figure 38](#)).
8. Install the new belt onto the engine pulley and spring loaded idler pulley ([Figure 38](#)).
9. Roll the belt onto the center pulley on the mower deck ([Figure 38](#)).

Important: Use caution when install the belt as tension will increase because of the spring loaded idler pulley.

10. Install the heat shield to the engine deck and carrier frame.

11. Install the belt cover onto the cutting unit and secure it with the bolts.
12. Install the carrier frame cover onto the carrier frame and secure the latches.

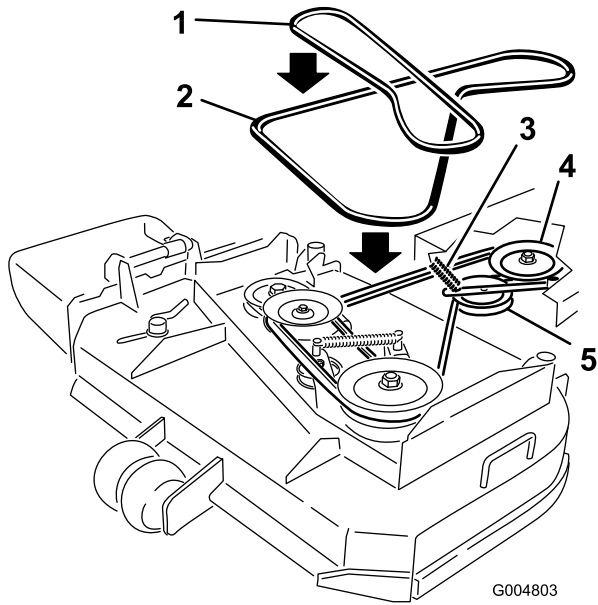


Figure 38

- | | |
|-------------------------|------------------|
| 1. Mower deck belt | 4. Clutch pulley |
| 2. PTO drive belt | 5. Idler pulley |
| 3. Idler arm and spring | |

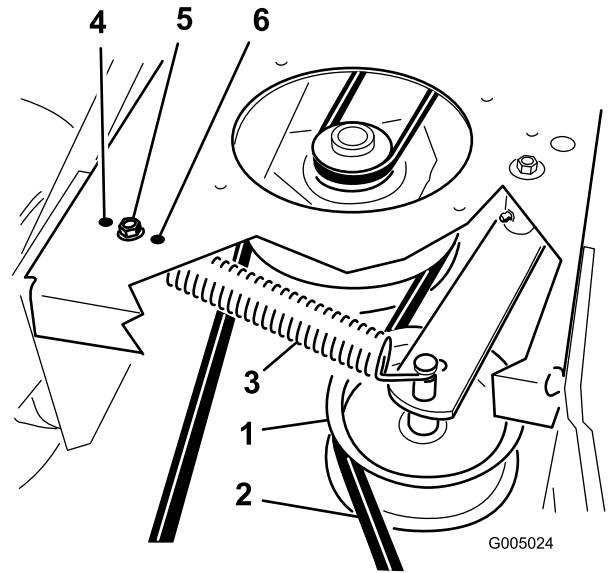


Figure 39

- | | |
|--------------------------------|--|
| 1. PTO-drive-belt-idler pulley | 4. Most tension for worn belts |
| 2. PTO-drive belt | 5. Medium tension for normal belt conditions |
| 3. Idler spring | 6. Least tension for new belts |

Adjusting the PTO-Drive-Belt-Idler-Spring Anchor

The position of the PTO idler can be adjusted to increase or decrease belt tension.

Use [Figure 39](#) for the idler position options.

Replacing the Pump-Drive Belt

1. Disengage the PTO and set the parking brake.
2. Stop the engine, remove the key, and wait for all moving parts to stop before leaving the operating position.
3. Remove the PTO-drive belt. Refer to [Replacing the PTO-Drive Belt \(page 30\)](#).
4. Raise the machine and support it with jack stands.
5. Disconnect the clutch wire connector from the wiring harness.
6. Disconnect the clutch retainer from the engine deck ([Figure 40](#)).

Controls System Maintenance

Adjusting the Motion-Control-Handle Positions

Adjusting the Right Motion-Control Lever

If the motion-control levers do not align horizontally, adjust the right motion-control lever.

Note: Adjust the horizontal alignment before the front to back alignment.

1. Disengage the PTO, move the right motion-control lever to the Neutral position and set the parking brake.
2. Stop the engine, remove the key, and wait for all moving parts to stop before leaving the operating position.
3. Push the right motion-control lever down out of Locked-Neutral position (Figure 41).
4. Check if it aligns horizontally with the left motion-control lever (Figure 41).

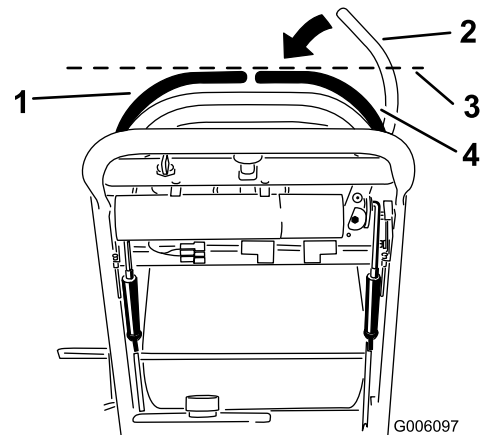


Figure 41

1. Left motion-control lever
2. Right motion-control lever
3. Check the horizontal alignment here
4. Right motion-control lever in Neutral-Locked position

To adjust the right motion-control lever horizontally, the cam needs to be adjusted.

1. Remove the cover under the control panel.
2. Loosen the nut and bolt holding the cam (Figure 42).

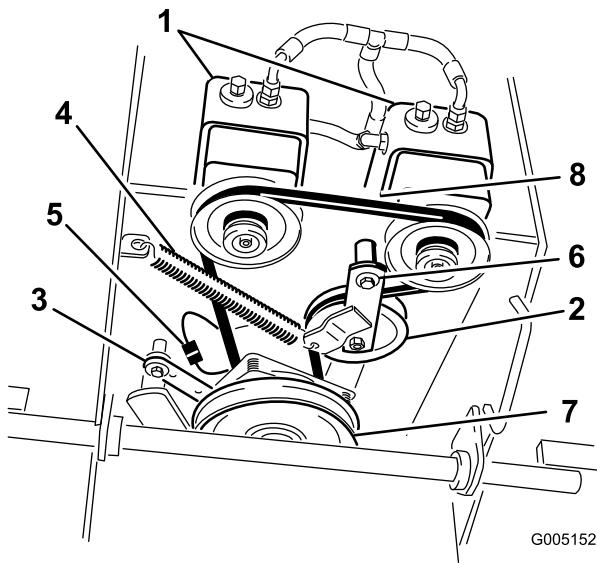


Figure 40

1. Hydraulic pumps
 2. Idler pulley
 3. Clutch retainer
 4. Tension spring
 5. Clutch wire connector
 6. Pivot bolt
 7. Drive pulley
 8. Pump drive belt
7. Unhook the idler spring from the frame (Figure 40).
 8. Install the new belt around clutch and the 2 drive pulleys.
 9. Install the idler spring between idler arm and frame bracket (Figure 40).
 10. Install the clutch retainer to the engine deck (Figure 40).
 11. Connect the clutch wire connector to the wiring harness.
 12. Install the PTO-drive belt.

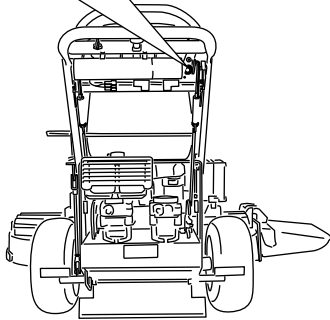
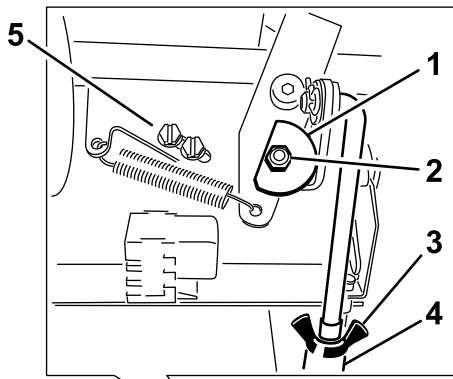


Figure 42

- | | |
|-----------------|------------------|
| 1. Cam | 4. Turnbuckle |
| 2. Nut and bolt | 5. Switch screws |
| 3. Wing nut | |

- Adjust the cam until it aligns with the left motion-control lever and tighten the nut and bolt for the cam.

After the cam is adjusted, the lever switch needs to be checked.

- Check the gap between the control lever and switch as shown in [Figure 43](#).

Note: The gap needs to be an 3 mm (1/8 inch).

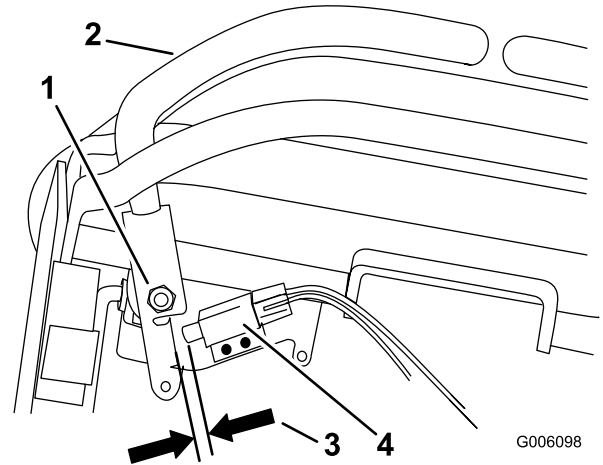


Figure 43
Shown from the front

- | | |
|-------------------------------------|--|
| 1. Right motion-control lever pivot | 3. 3 mm (1/8 inch) gap needed between switch and control lever |
| 2. Right motion-control lever | 4. Switch |

- If needed, loosen the screws holding the switch and adjust the switch ([Figure 43](#)).
- Tighten the screws and install the cover under the control panel.

Adjusting the Neutral Position for the Motion-Control Levers

Important: Ensure the tracking of the mower is correct after adjusting the motion-control levers. After adjusting the tracking, the motion-control levers may not align the exactly front to back ([Figure 44](#)).

If the motion-control levers do not align front to back, or the right control-lever does not move easily into the Neutral-Lock position, adjust it. Adjust each lever and control rod separately.

Note: Adjust the horizontal alignment before the front to back alignment.

- After the horizontal alignment is finished, check the front to back alignment ([Figure 44](#)).

Hydraulic System Maintenance

Servicing the Hydraulic System

Fluid Type: Toro Hypr-Oil 500 synthetic motor oil or equivalent synthetic oil.

Important: Use oil specified or equivalent. Other fluids could cause system damage.

Hydraulic System Oil Capacity: 2.0 L (67 oz)

Checking the Hydraulic Fluid

Service Interval: After the first 8 hours—Check the hydraulic fluid.

Every 25 hours—Check the hydraulic fluid.

Every 200 hours—Change the hydraulic fluid.

Note: There are 2 ways of checking the hydraulic oil. One is when the oil is warm and one is when the oil is cold. The baffle inside the tank has 2 levels depending if the oil is warm or cold.

1. Position the machine on a level surface.
2. Disengage the power take off (PTO) and shut off the engine.
3. Wait for all moving parts to stop before leaving the operating position and set the parking brake.
4. Clean area around the cap and filler neck of the hydraulic tank (Figure 46).

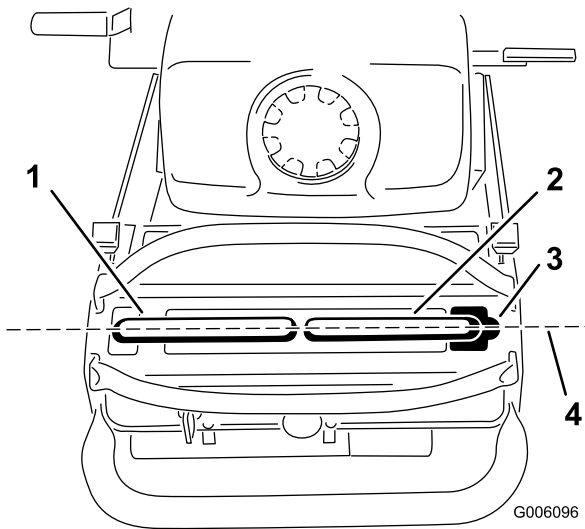


Figure 44

1. Left motion-control lever
2. Right motion-control lever
3. Neutral-Locked position
4. Align the control levers front to back here

2. Loosen the wing nuts on the right control rod and rotate the turnbuckle in or out to ensure the right control lever is centered in the Neutral-Lock position.
3. Secure the turnbuckle in position with the wing nuts (Figure 45).

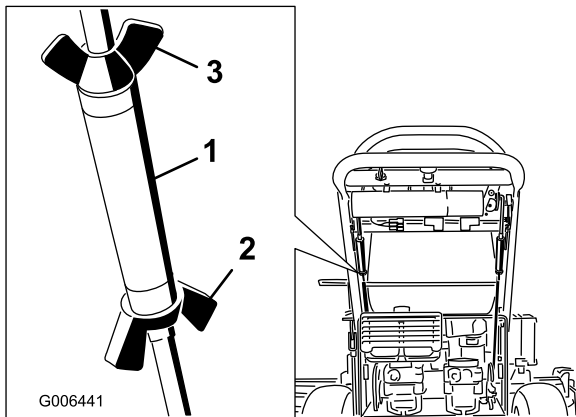


Figure 45

1. Turnbuckle
2. Bottom wing nut
3. Top wing nut (left hand threaded)

4. Loosen the wing nuts on the left control rod and rotate the turnbuckle in or out to change the tracking.
5. Secure the turnbuckle in position with the wing nuts (Figure 45).
6. Check for proper tracking. Adjust the left control rod if a change is needed. Refer to [Adjusting the Tracking](#) (page 26).

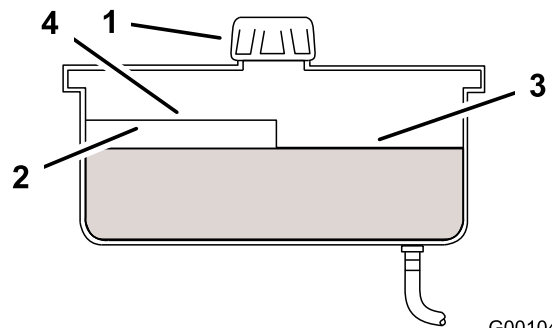


Figure 46

1. Cap
2. Baffle
3. Cold fluid level—full
4. Hot fluid level—full

5. Remove the cap from filler neck and check the fluid level in the reservoir. (Figure 46).
6. Add fluid to the reservoir until it reaches the cold level of the baffle.
7. Run the machine at low idle for 15 minutes to allow any air to purge out of the system and warm the fluid. Refer to [Starting and Stopping the Engine](#) (page 13).

- Recheck the fluid level while the fluid is warm. Add fluid to the reservoir until it reaches the hot level of the baffle.

Note: The fluid level should be to the top of the hot level of the baffle, when the fluid is warm (Figure 46).

- Install the cap on the filler neck.

⚠ WARNING

Hydraulic fluid escaping under pressure can penetrate skin and cause injury.

- If hydraulic fluid is injected into the skin it must be surgically removed within a few hours by a doctor familiar with this type of injury. Gangrene may result if this is not done.
- Keep body and hands away from pin hole leaks or nozzles that eject high pressure hydraulic fluid.
- Use cardboard or paper to find hydraulic leaks.
- Safely relieve all pressure in the hydraulic system before performing any work on the hydraulic system.
- Make sure all hydraulic fluid hoses and lines are in good condition and all hydraulic connections and fittings are tight before applying pressure to hydraulic system.

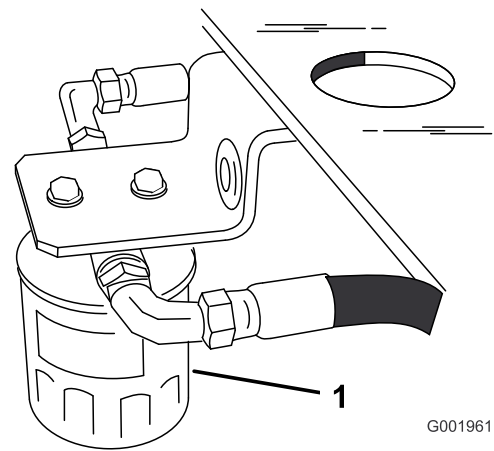


Figure 47

- Remove the old filter and wipe the filter adapter gasket surface clean (Figure 47).
- Apply a thin coat hydraulic fluid to the rubber gasket on the replacement filter.
- Install the replacement hydraulic filter onto the filter adapter.

Note: Do not tighten.

- Remove the plastic bag from the reservoir opening and allow the filter to fill with hydraulic fluid.
- When the hydraulic filter is full, turn the oil filter clockwise until the rubber gasket contacts the filter adapter, then tighten the filter an additional 1/2 turn (Figure 48).

Replacing the Hydraulic Filter

Service Interval: After the first 8 hours—Change the hydraulic filter.

Every 200 hours—Change the hydraulic filter.

⚠ WARNING

Hot hydraulic fluid can cause severe burns.

Allow the hydraulic fluid to cool before performing any maintenance to the hydraulic system.

- Disengage the PTO and set the parking brake.
- Stop the engine and wait for all moving parts to stop before leaving the operating position.

Important: Do not substitute automotive oil filter or severe hydraulic system damage may result.

- Remove the hydraulic reservoir cap and temporarily cover the opening with a plastic bag and rubber band to prevent all of the hydraulic fluid from draining out.
- Locate the filter under the fuel tank and place a drain pan under the filter (Figure 47).

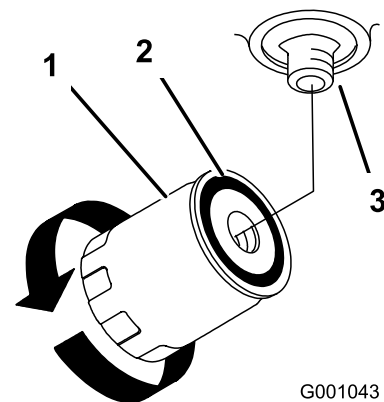


Figure 48

- | | |
|---------------------|------------|
| 1. Hydraulic filter | 3. Adapter |
| 2. Gasket | |

- Clean up any spilled fluid.
- Check the fluid in the reservoir, add fluid to the tank until it reaches the cold baffle of the tank.

Important: Use oil specified or equivalent. Other fluids could cause system damage.

- Start the engine and let it run for about 2 minutes to purge the air from the system.

13. Stop the engine and check for leaks.

Note: If 1 or both wheels will not drive, refer to [Bleeding the Hydraulic System \(page 36\)](#).

14. Recheck level and add fluid, if required. **Do not overfill.**

Bleeding the Hydraulic System

The system is self bleeding, however, it may be necessary to bleed the system if the fluid is changed or after work is performed on the system.

1. Disengage the PTO and set the parking brake.
2. Stop the engine and wait for all moving parts to stop before leaving the operating position.
3. Raise the rear of the machine up onto jack stands high enough to raise the drive wheels off the ground.
4. Start the engine and move the throttle control to the idle position.

If the drive wheel does not rotate, it is possible to assist the purging of the system by carefully rotating the tire in the forward direction.

5. Check the hydraulic fluid level. As it drops, add fluid as required to maintain the proper level.
6. Repeat this procedure for the opposite wheel.
7. Thoroughly clean the area around each of the charge pump housings.

Checking the Hydraulic Lines

Service Interval: Every 100 hours

Check hydraulic lines and hoses for leaks, loose fittings, kinked lines, loose mounting supports, wear, weather and chemical deterioration. Make necessary repairs before operating.

Note: Keep areas around hydraulic system clean from grass and debris build up.

WARNING

Hydraulic fluid escaping under pressure can penetrate skin and cause injury.

- If hydraulic fluid is injected into the skin it must be surgically removed within a few hours by a doctor familiar with this type of injury. Gangrene may result if this is not done.
- Keep body and hands away from pin hole leaks or nozzles that eject high pressure hydraulic fluid.
- Use cardboard or paper to find hydraulic leaks.
- Safely relieve all pressure in the hydraulic system before performing any work on the hydraulic system.
- Make sure all hydraulic fluid hoses and lines are in good condition and all hydraulic connections and fittings are tight before applying pressure to hydraulic system.

Mower Deck Maintenance

Servicing the Cutting Blades

To ensure a superior quality of cut, keep the blades sharp. For convenient sharpening and replacement, keep extra blades on hand.

⚠ WARNING

A worn or damaged blade can break, and a piece of the blade could be thrown into the operator's or bystander's area, resulting in serious personal injury or death.

- Inspect the blades periodically for wear or damage.
- Replace a worn or damaged blade.

Preparing to Inspect or Service the Blades

Park the machine on a level surface, disengage the blades, and set the parking brake.

Turn the ignition key to the Off position.

Remove the key and disconnect the spark plug wires from the spark plugs.

Inspecting the Blades

1. Inspect the cutting edges (Figure 49).

Note: If the edges are not sharp or have nicks, remove and sharpen the blades. Refer to [Sharpening the Blades](#) (page 38).

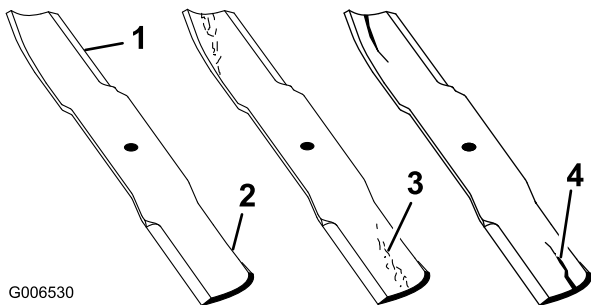


Figure 49

1. Cutting Edge
2. Sail
3. Wear/slot forming in curved area
4. Crack in the curved area

2. Inspect the blades, especially the curved area (Figure 49). If you notice any cracks, wear, or a slot forming in this area (item 3. in Figure 49), immediately install a new blade.

Checking for Bent Blades

1. Disengage the PTO, move the motion-control levers to the Neutral-Locked position, and set the parking brake.
2. Stop the engine, remove the key, and wait for all moving parts to stop before leaving the operating position.
3. Rotate the blades until the ends face forward and backward. Measure from a level surface to the cutting edge, position A, of the blades (Figure 50).

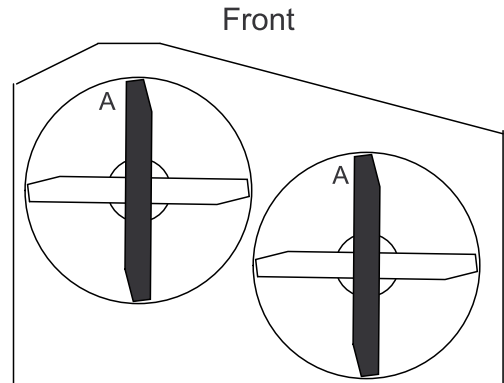


Figure 50

4. Rotate the opposite ends of the blades forward.
5. Measure from a level surface to the cutting edge of the blades at the same position as in step 3 above. The difference between the dimensions obtained in steps 3 and 4 must not exceed 3 mm (1/8 inch). If this dimension exceeds 3 mm (1/8 inch), the blade is bent and must be replaced; refer to [Removing the Blades](#) (page 37) and [Installing the Blades](#) (page 38).

⚠ WARNING

A blade that is bent or damaged could break apart and could seriously injure or kill you or bystanders.

- Always replace bent or damaged blade with a new blade.
- Never file or create sharp notches in the edges or surfaces of blade.

Removing the Blades

Blades must be replaced if a solid object is hit, if the blade is out of balance, or is bent. To ensure optimum performance and continued safety conformance of the machine, use genuine Toro replacement blades. Replacement blades made by other manufacturers may result in non-conformance with safety standards.

1. Hold the blade end using a rag or thickly-padded glove.
2. Remove the blade bolt, curved washer, blade stiffener, and blade from the spindle (Figure 51).

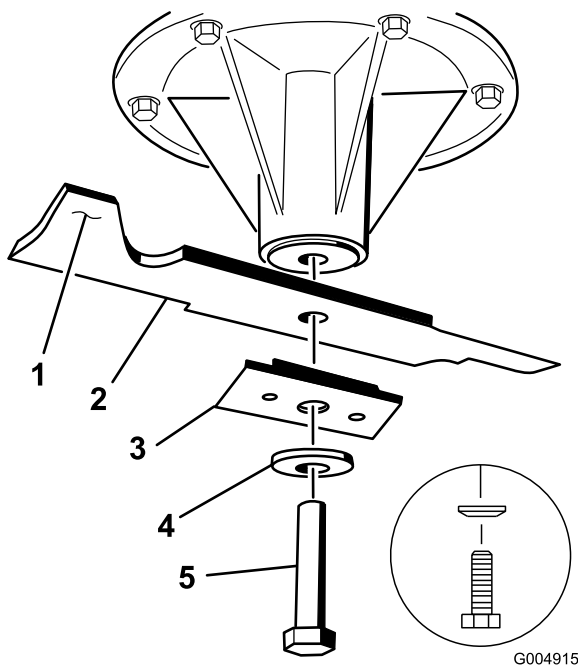


Figure 51

- | | |
|---------------------------|------------------|
| 1. Sail area of the blade | 4. Curved washer |
| 2. Blade | 5. Blade bolt |
| 3. Blade stiffener | |

Sharpening the Blades

- Use a file to sharpen the cutting edge at both ends of the blade (Figure 52). Maintain the original angle. The blade retains its balance if the same amount of material is removed from both cutting edges.

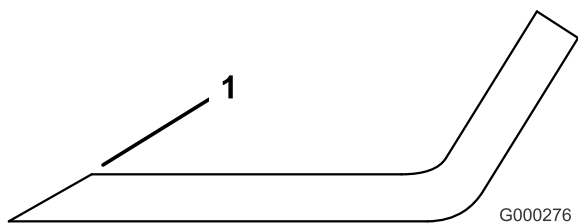


Figure 52

- Sharpen at original angle
- Check the balance of the blade by putting it on a blade balancer (Figure 53). If the blade stays in a horizontal position, the blade is balanced and can be used. If the blade is not balanced, file some metal off the end of the sail area only (Figure 53). Repeat this procedure until the blade is balanced.

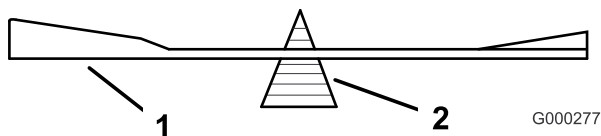


Figure 53

- | | |
|----------|-------------|
| 1. Blade | 2. Balancer |
|----------|-------------|

Installing the Blades

Important: The sail part of the blade must be pointing upward, toward the inside of the mower to ensure proper cutting (Figure 53).

- Install the blade, stiffener, curved washer, and blade bolt to the spindle (Figure 53).
- Torque the blade bolt to 115-140 N-m (85-110 ft-lb).

Correcting the Mower Quality of Cut

If 1 deck blade cuts lower than the other, correct as follows.

Note: Tire air pressure is critical in these procedures. Make sure all tires have the correct pressure.

- Disengage the PTO and set the parking brake.
- Stop the engine, remove the key, and wait for all moving parts to stop before leaving the operating position.
- Disconnect the spark plug wire(s) from the spark plug(s).
- Adjust the tire pressure in the rear tires to specifications; refer to [Drive System Maintenance \(page 26\)](#).
- Check that the blades and spindle shafts are not bent. Refer to [Checking for Bent Blades \(page 37\)](#).
- Set the height-of-cut to the 101.6 mm (4 inch) position. Refer to [Adjusting the Height-of-Cut \(page 17\)](#).
- Perform the steps in the following sections: [Setting up the Frame \(page 38\)](#), [Checking the Mower Deck Front-to-Rear Pitch \(page 40\)](#), and [Checking the Mower Deck Side-to-Side Height \(page 41\)](#).

Setting up the Frame

Checking the Carrier Frame and Engine Deck Alignment

Note: Misalignment can cause excess wear on the PTO drive belt.

- Disengage the PTO and set the parking brake.
- Stop the engine, remove the key, and wait for all moving parts to stop before leaving the operating position.
- Place a long straight edge on top of the engine deck as shown in Figure 54.
- At the carrier frame cross channel, measure the height at location A (Figure 54).

Note: This measurement must be 33 mm (1-5/16 inch), plus or minus 6 mm (1/4 inch).

- If the height at location A is not correct, adjust it.
- Loosen the carrier frame mounting bolts on both sides of the machine (Figure 54).

- Align the carrier frame and engine deck to match 33 mm (1-5/16 inch), plus or minus 6 mm (1/4 inch) at location **A** (Figure 54).
- Tighten the carrier frame mounting bolts on both sides of the machine.

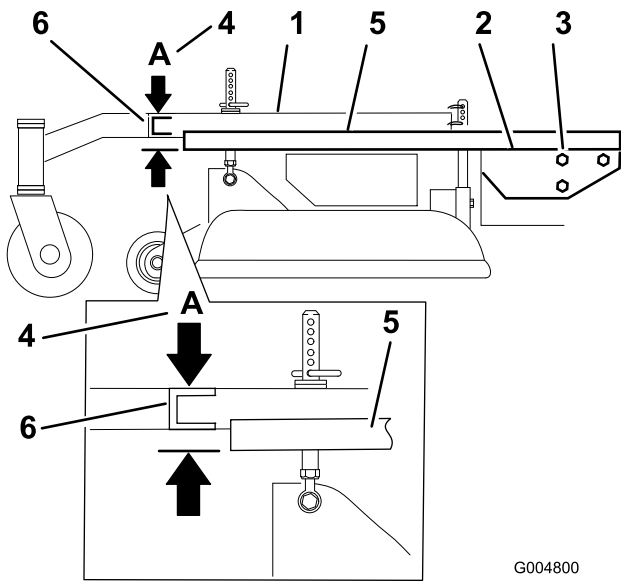


Figure 54

- | | |
|---------------------------------|--|
| 1. Carrier frame | 4. Location A, 33 mm (1-5/16 inch) plus or minus 6 mm (1/4 inch) |
| 2. Top of engine deck | 5. Straight edge |
| 3. Carrier frame mounting bolts | 6. Carrier frame cross channel |

Checking the Engine Deck Height

- Disengage the PTO and set the parking brake.
- Stop the engine, remove the key, and wait for all moving parts to stop before leaving the operating position.
- Adjust the tire pressure in the rear tires to specifications; refer to [Drive System Maintenance](#) (page 26).
- Measure engine deck height at location **A** (Figure 55).
- Measure engine deck height at location **B** (Figure 55).
- If the height at location **A** and **B** are not the same, change tire pressure slightly to make them the same.

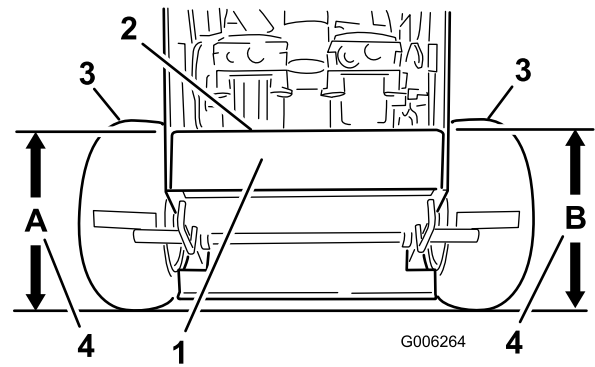


Figure 55

- | | |
|-------------------------|-------------------------------------|
| 1. Back view of machine | 3. Tires |
| 2. Top of engine deck | 4. Same height at locations A and B |

Checking the Carrier Frame Front-to-Rear Pitch

The carrier frame must have a pitch between 3 mm (1/8 inch) to 9 mm (3/8 inch) over the length of 61 cm (24 inches) on the carrier frame (Figure 56).

- Measure out 61 cm (24 inches) on the carrier frame (Figure 56).

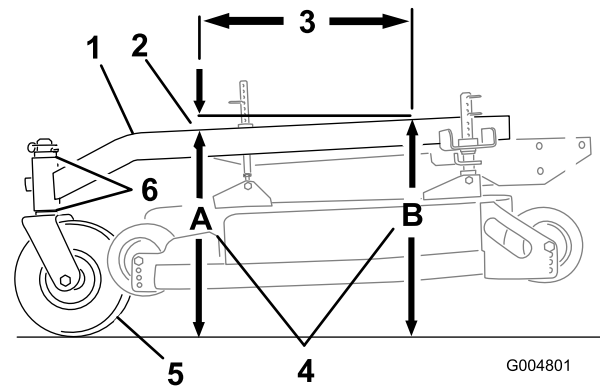


Figure 56

- | | |
|--|--------------------------------|
| 1. Carrier frame | 4. Height at locations A and B |
| 2. 3 to 10 mm (1/8 inch to 3/8 inch) pitch over 61 cm (24 inch) length | 5. Caster wheel |
| 3. 61 cm (24 inches) | 6. Caster spacers |

- Measure carrier frame height at location **A** (Figure 56).
- Measure carrier frame height at location **B** (Figure 56).
- The height at location **A** must be an 3 mm to 10 mm (1/8 to 3/8 inch) lower than location **B** (Figure 56).
- If the carrier frame is not correct, move the caster spacers to make it an 3 mm to 10 mm (1/8 to 3/8 inch) pitch (Figure 56).

Note: Move spacers from top or bottom to make the correct pitch.

- The tire pressure may also be adjusted slightly to make an 3 mm to 10 mm (1/8 to 3/8 inch) pitch.

Checking the Carrier Frame Side-to-Side Height

The carrier frame needs to be parallel side-to-side from the ground.

- Disengage the PTO and set the parking brake.
- Stop the engine, remove the key, and wait for all moving parts to stop before leaving the operating position.
- Adjust the tire pressure in the rear tires to specifications; refer to [Drive System Maintenance \(page 26\)](#).
- Measure carrier frame height at location **A** ([Figure 57](#)).
- Measure carrier frame height at location **B** ([Figure 57](#)).

Note: If the carrier frame height is not the same move spacers from top or bottom of caster wheel, to make it level. The tire pressure may also be adjusted slightly to make it level.

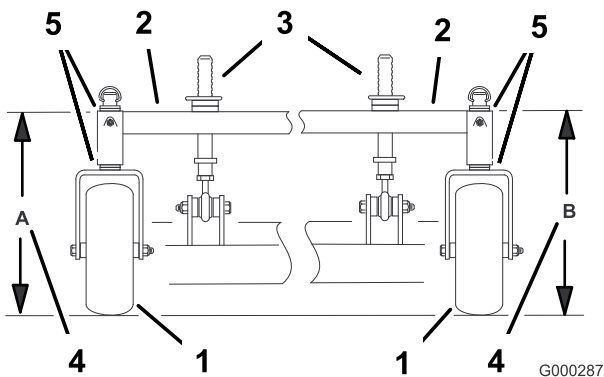


Figure 57

- | | |
|-----------------------------|-------------------------------------|
| 1. Caster wheel | 4. Same height at locations A and B |
| 2. Carrier frame | 5. Caster spacers |
| 3. Front height-of-cut pins | |

Checking the Mower Deck Front-to-Rear Pitch

- Adjust the tire pressure in the rear tires to specifications; refer to [Drive System Maintenance \(page 26\)](#).
- Position 1 blade front-to-rear. Measure at **A** and **B** locations from a level surface to the cutting edge of the blade tips ([Figure 58](#)).
- The mower blade should be a 6 mm (1/4 inch) lower in front at **A** than in the rear at **B**.
- Rotate blades and repeat for other blades. If it is not correct, proceed to [Changing the Mower Deck Front-to-Rear Pitch \(page 40\)](#).

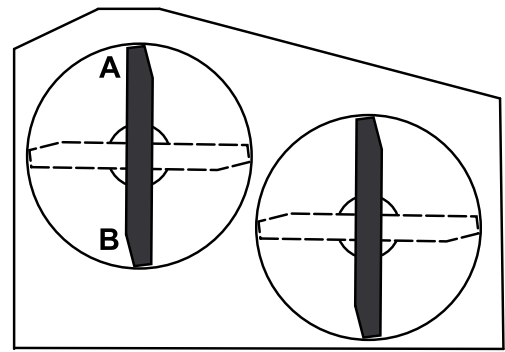


Figure 58

G004906

Changing the Mower Deck Front-to-Rear Pitch

Changing the front-to-rear pitch is done by adjusting the front height-of-cut posts.

To change the front-to-rear pitch, the front height-of-cut posts can be adjusted ([Figure 59](#)).

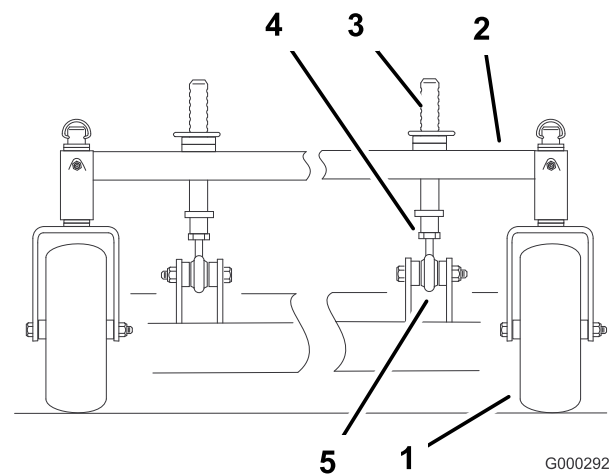


Figure 59

G000292

- | | |
|-----------------------------|---------------|
| 1. Caster wheel | 4. Jam nut |
| 2. Carrier frame | 5. Ball joint |
| 3. Front height-of-cut pins | |

To raise the front of the deck, loosen jam nut and rotate the front pin clockwise ([Figure 59](#)).

To lower the front of the deck, loosen jam nut and rotate the front pin counter clockwise ([Figure 59](#)).

- Position the blades front-to-rear.
- Measure at **C** and **D** locations ([Figure 59](#)) from a level surface to the cutting edge of the blades.
- Check the side-to-side leveling of the cutting unit.
- Tighten the jam nuts ([Figure 59](#)).

Checking the Mower Deck Side-to-Side Height

1. Adjust the rear tire pressure to specifications; refer to [Drive System Maintenance \(page 26\)](#).
2. Position the blades side-to-side.
3. Measure at **C** and **D** locations from a level surface to the cutting edge of blade tips ([Figure 60](#)).

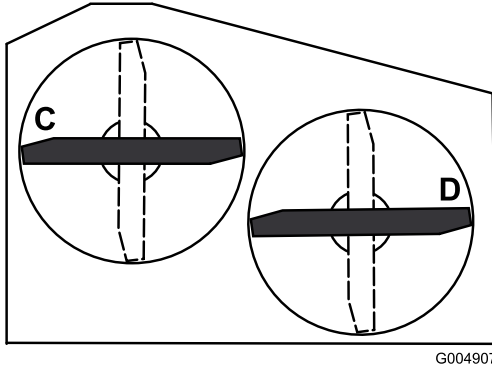


Figure 60

4. The difference between measurements **C** and **D** should be no more than 6 mm (1/4 inch).

Changing the Mower Deck Side-to-Side Height

Changing the side-to-side height is done by adjusting the rear tire pressure and caster spacers.

1. Change the rear tire pressure.
Note: Do this to the corresponding side that needs adjustment.
2. Adjust the caster spacer.
3. Recheck the front-to-rear pitch and side to side leveling of the cutting unit.

Matching the Height-of-Cut

1. Check the rear tire pressure.
2. Set the height-of-cut to the 102 mm (4 inches) position following the height-of-cut decal.
3. With the machine on level surface, position 1 blade front-to-rear.
4. Measure at **A** and from level surface to the cutting edge of the blade tips ([Figure 61](#)).

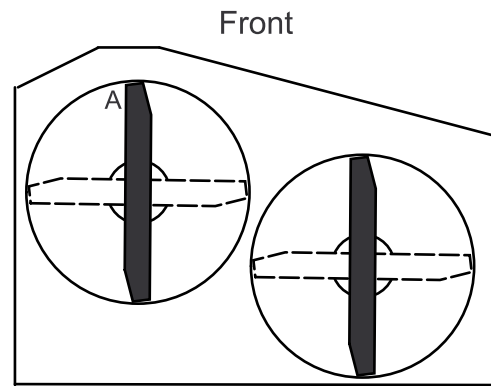


Figure 61

G000296

5. The measurement should be 102 mm (4 inches).
6. If it does not measure correctly:
 - A. Adjust the rear tire pressure.
 - B. Adjust the caster fork spacers.
 - C. Adjust the front mower-deck-support pins.
7. Check the carrier frame front-to-rear pitch.

Replacing the Grass Deflector

⚠ WARNING

An uncovered discharge opening could allow the lawn mower to throw objects at you or bystanders, resulting in serious injury. Also, contact with the blade could occur.

Never operate the lawn mower unless you install a cover plate, a mulch plate, grass deflector or bagger.

1. Remove the locknut, bolt, spring and spacer holding the deflector to the pivot brackets (Figure 62).

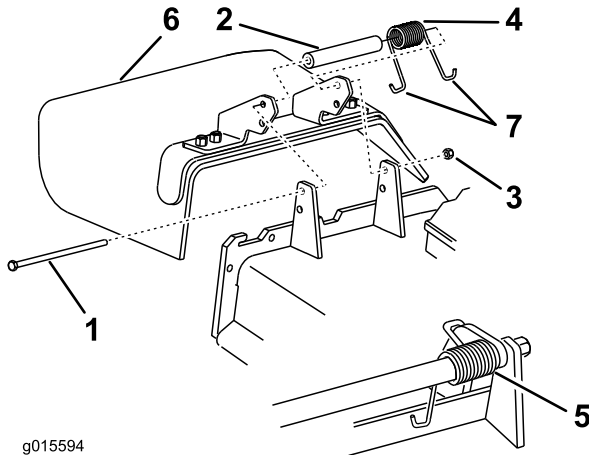


Figure 62

- | | |
|------------|-------------------------|
| 1. Bolt | 5. Spring installed |
| 2. Spacer | 6. Grass deflector |
| 3. Locknut | 7. J-hook end of spring |
| 4. Spring | |

2. Remove damaged or worn grass deflector.
3. Place spacer and spring onto grass deflector.
4. Place 1 J-end of the spring behind the deck edge.

Note: Make sure that 1 J-end of the spring is installed behind the deck edge before installing the bolt as shown in Figure 62.

5. Install bolt and nut.
6. Place 1 J-hook end of the spring around the grass deflector (Figure 62).

Important: The grass deflector must be able to rotate. Lift the deflector up to the fully open position and ensure that it rotates into the fully down position.

Cleaning

Cleaning under the Mower

Service Interval: Before each use or daily

Remove the grass buildup under the mower daily.

1. Disengage the PTO, move the motion-control levers to the Neutral-Locked position, and set the parking brake.
2. Stop the engine, remove the key, and wait for all moving parts to stop before leaving the operating position.
3. Raise the front of the machine and use jack stands to support the machine.

Disposing of Waste

Engine oil, batteries, hydraulic oil, and engine coolant are pollutants to the environment. Dispose of these according to your state and local regulations.

Storage

Cleaning and Storage

1. Disengage the power take off (PTO), set the parking brake, and turn the ignition key to off and remove the key.
2. Remove grass clippings, dirt, and grime from the external parts of the entire machine, especially the engine.
3. Clean dirt and chaff from the outside of the engine's cylinder head fins and blower housing.

Important: You can wash the machine with mild detergent and water. Do not pressure wash the machine. Avoid excessive use of water, especially near the drive system and engine. Pressure washing can force dirt and water into critical parts, such as spindle bearings and electrical switches.

4. Check the brake; refer to [Checking the Brakes \(page 29\)](#).
5. Service the air cleaner; refer to [Servicing the Air Cleaner \(page 21\)](#).
6. Grease the machine; refer to [Lubricating the Machine \(page 20\)](#).
7. Change the engine oil; refer to [Changing the Engine Oil \(page 22\)](#).
8. Check the tire pressure; refer to [Checking the Tire Pressure \(page 26\)](#).
9. For long-term storage:
 - A. Add stabilizer/conditioner additive to fuel in the tank.
 - B. Run engine to distribute conditioned fuel through the fuel system (5 minutes).
 - C. Stop engine, allow to cool and drain the fuel tank; refer to [Fuel System Maintenance \(page 24\)](#), or operate engine until it stops.
 - D. Start engine and run until it stops. Repeat, on Choke until the engine does not start.
 - E. Dispose of fuel properly. Recycle as per local codes.

Note: Do not store stabilizer/conditioned gasoline over 90 days.
10. Remove the spark plug(s) and check its condition; refer to [Servicing the Spark Plugs \(page 23\)](#). With the spark plug(s) removed from the engine, pour 2 tablespoons of engine oil into the spark plug hole. Now use the starter to crank the engine and distribute the oil inside the cylinder. Install the spark plug(s). Do not install the wire on the spark plug(s).
11. Check and tighten all bolts, nuts, and screws. Repair or replace any part that is damaged or defective.

12. Paint all scratched or bare metal surfaces. Paint is available from your Authorized Service Dealer.
13. Store the machine in a clean, dry garage or storage area. Remove the key from the ignition switch and keep it in a memorable place. Cover the machine to protect it and keep it clean.

Troubleshooting

Problem	Possible Cause	Corrective Action
The engine will not start, starts hard, or fails to keep running.	<ol style="list-style-type: none"> 1. The fuel tank is empty. 2. The fuel-shutoff valve is closed. 3. The choke is not in the correct position. 4. The air cleaner is dirty. 5. The spark-plug wire is loose or disconnected. 6. The spark plug is pitted or fouled, or the gap is incorrect. 7. There is dirt in the fuel filter. 8. Dirt, water, or stale fuel is in the fuel system. 	<ol style="list-style-type: none"> 1. Fill the fuel tank with gasoline. 2. Open the fuel-shutoff valve. 3. Close the choke if the engine is cold; open the choke if the engine is warm. 4. Clean or replace the air-cleaner element. 5. Install the wire on spark plug. 6. Install a new, correctly gapped spark plug. 7. Replace the fuel filter. 8. Contact an Authorized Service Dealer.
The engine loses power.	<ol style="list-style-type: none"> 1. The engine load is excessive. 2. The air cleaner is dirty. 3. The oil level in the crankcase is low. 4. The cooling fins and air passages under the engine blower housing are plugged. 5. The spark plug is pitted or fouled, or the gap is incorrect. 6. The vent hole in the fuel cap is plugged. 7. There is dirt in the fuel filter. 8. Dirt, water, or stale fuel is in the fuel system. 	<ol style="list-style-type: none"> 1. Reduce the ground speed. 2. Clean the air-cleaner element. 3. Add oil to the crankcase. 4. Remove the obstruction from the cooling fins and air passages. 5. Install a new, correctly gapped spark plug. 6. Clean or replace the fuel cap. 7. Replace the fuel filter. 8. Contact an Authorized Service Dealer.
The engine overheats.	<ol style="list-style-type: none"> 1. The engine load is excessive. 2. The oil level in the crankcase is low. 3. The cooling fins and air passages under the engine blower housing are plugged. 	<ol style="list-style-type: none"> 1. Reduce the ground speed. 2. Add oil to the crankcase. 3. Remove the obstruction from the cooling fins and air passages.
The machine does not drive.	<ol style="list-style-type: none"> 1. The shift lever is in neutral. 2. The traction belt is worn, loose, or broken. 3. The traction belt is off a pulley. 4. The idler spring is broken or missing. 	<ol style="list-style-type: none"> 1. Move the shift lever to a drive gear position. 2. Change the belt. 3. Change the belt. 4. Replace the spring.
There is abnormal vibration.	<ol style="list-style-type: none"> 1. One/several cutting blades is/are bent or unbalanced. 2. A blade mounting bolt is loose. 3. The engine mounting bolts are loose. 4. The engine pulley, idler pulley, or blade pulley is loose. 5. The engine pulley is damaged. 6. The blade spindle is bent. 	<ol style="list-style-type: none"> 1. Install new cutting blade(s). 2. Tighten the blade mounting bolt. 3. Tighten the engine mounting bolts. 4. Tighten the appropriate pulley. 5. Contact an Authorized Service Dealer. 6. Contact an Authorized Service Dealer.
The machine produces an uneven cutting height.	<ol style="list-style-type: none"> 1. The blade(s) is/are not sharp. 2. One/several cutting blade(s) is/are bent. 3. The mower is not level. 4. The underside of the mower is dirty. 5. The tire pressure is not correct. 6. A blade spindle is bent. 	<ol style="list-style-type: none"> 1. Sharpen the blade(s). 2. Install new cutting blade(s). 3. Level the mower from side-to-side and front-to-rear. 4. Clean the underside of the mower. 5. Adjust the tire pressure. 6. Contact an Authorized Service Dealer.

Problem	Possible Cause	Corrective Action
The blades do not rotate.	<ol style="list-style-type: none">1. The mower deck belt is worn or loose.2. The mower deck belt is broken.3. The mower deck belt is off pulley.4. The idler spring is broken or missing.	<ol style="list-style-type: none">1. Check the belt tension.2. Install a new deck belt.3. Inspect the belt and replace it if it is damaged. Check the pulleys and idlers and adjust the belt tension.4. Replace the spring.

Notes:

International Distributor List

Distributor:	Country:	Phone Number:	Distributor:	Country:	Phone Number:
Agrolanc Kft	Hungary	36 27 539 640	Maquiver S.A.	Colombia	57 1 236 4079
Balama Prima Engineering Equip.	Hong Kong	852 2155 2163	Maruyama Mfg. Co. Inc.	Japan	81 3 3252 2285
B-Ray Corporation	Korea	82 32 551 2076	Mountfield a.s.	Czech Republic	420 255 704 220
Casco Sales Company	Puerto Rico	787 788 8383	Mountfield a.s.	Slovakia	420 255 704 220
Ceres S.A.	Costa Rica	506 239 1138	Munditol S.A.	Argentina	54 11 4 821 9999
CSSC Turf Equipment (pvt) Ltd.	Sri Lanka	94 11 2746100	Norma Garden	Russia	7 495 411 61 20
Cyril Johnston & Co.	Northern Ireland	44 2890 813 121	Oslinger Turf Equipment SA	Ecuador	593 4 239 6970
Cyril Johnston & Co.	Republic of Ireland	44 2890 813 121	Oy Hako Ground and Garden Ab	Finland	358 987 00733
Equiver	Mexico	52 55 539 95444	Parkland Products Ltd.	New Zealand	64 3 34 93760
Femco S.A.	Guatemala	502 442 3277	Perfetto	Poland	48 61 8 208 416
ForGarder OU	Estonia	372 384 6060	Pratoverde SRL.	Italy	39 049 9128 128
G.Y.K. Company Ltd.	Japan	81 726 325 861	Prochaska & Cie	Austria	43 1 278 5100
Geomechaniki of Athens	Greece	30 10 935 0054	RT Cohen 2004 Ltd.	Israel	972 986 17979
Golf international Turizm	Turkey	90 216 336 5993	Riversa	Spain	34 9 52 83 7500
Guandong Golden Star	China	86 20 876 51338	Lely Turfcare	Denmark	45 66 109 200
Hako Ground and Garden	Sweden	46 35 10 0000	Solvart S.A.S.	France	33 1 30 81 77 00
Hako Ground and Garden	Norway	47 22 90 7760	Spypros Stavrinides Limited	Cyprus	357 22 434131
Hayter Limited (U.K.)	United Kingdom	44 1279 723 444	Surge Systems India Limited	India	91 1 292299901
Hydroturf Int. Co Dubai	United Arab Emirates	97 14 347 9479	T-Markt Logistics Ltd.	Hungary	36 26 525 500
Hydroturf Egypt LLC	Egypt	202 519 4308	Toro Australia	Australia	61 3 9580 7355
Irrimac	Portugal	351 21 238 8260	Toro Europe NV	Belgium	32 14 562 960
Irrigation Products Int'l Pvt Ltd.	India	0091 44 2449 4387	Valtech	Morocco	212 5 3766 3636
Jean Heybroek b.v.	Netherlands	31 30 639 4611	Victus Emak	Poland	48 61 823 8369

European Privacy Notice

The Information Toro Collects

Toro Warranty Company (Toro) respects your privacy. In order to process your warranty claim and contact you in the event of a product recall, we ask you to share certain personal information with us, either directly or through your local Toro company or dealer.

The Toro warranty system is hosted on servers located within the United States where privacy law may not provide the same protection as applies in your country.

BY SHARING YOUR PERSONAL INFORMATION WITH US, YOU ARE CONSENTING TO THE PROCESSING OF YOUR PERSONAL INFORMATION AS DESCRIBED IN THIS PRIVACY NOTICE.

The Way Toro Uses Information

Toro may use your personal information to process warranty claims, to contact you in the event of a product recall and for any other purpose which we tell you about. Toro may share your information with Toro's affiliates, dealers or other business partners in connection with any of these activities. We will not sell your personal information to any other company. We reserve the right to disclose personal information in order to comply with applicable laws and with requests by the appropriate authorities, to operate our systems properly or for our own protection or that of other users.

Retention of your Personal Information

We will keep your personal information as long as we need it for the purposes for which it was originally collected or for other legitimate purposes (such as regulatory compliance), or as required by applicable law.

Toro's Commitment to Security of Your Personal Information

We take reasonable precautions in order to protect the security of your personal information. We also take steps to maintain the accuracy and current status of personal information.

Access and Correction of your Personal Information

If you would like to review or correct your personal information, please contact us by email at legal@toro.com.

Australian Consumer Law

Australian customers will find details relating to the Australian Consumer Law either inside the box or at your local Toro Dealer.



The Toro Total Warranty

Landscape
Contractor
Equipment (LCE)

Conditions and Products Covered

The Toro Company and its affiliate, Toro Warranty Company, pursuant to an agreement between them, jointly promise to the original purchaser to repair the Toro Products listed below if defective in materials or workmanship.

The following time periods apply from the date of purchase by the original owner:

Products	Warranty Period
Walk Behind Mowers	
53 cm Mowers – Residential use ¹	2 years
53 cm Mowers – Commercial use	1 year
76 cm Mowers – Residential use ¹	2 years
76 cm Mowers – Commercial use	1 year
Mid-Size Walk-Behind Mowers	2 years
• Engine	2 years ²
Grand Stand® Mowers	5 years or 1,200 hours ³
• Engine	2 years
• Frame	Lifetime (original owner only) ⁴
Z Master® 2000 Series Mowers	4 years or 500 hours ³
• Engine	2 years ²
• Frame	Lifetime (original owner only) ⁴
Z Master® 3000 Series Mowers	5 years or 1,200 hours ³
• Engine	2 years ²
• Frame	Lifetime (original owner only) ⁴
Z Master® 5000 and 6000 Series Mowers	5 years or 1,200 hours ³
• Engine	2 years ²
• Frame	Lifetime (original owner only) ⁴
Z Master® 7000 Series Mowers	5 years or 1,200 hours ³
• Engine	2 years ²
• Frame	Lifetime (original owner only) ⁴
All Mowers	
• Battery	2 years
• Attachments	2 years

¹Residential use means use of the product on the same lot as your home. Use at more than one location is considered commercial use and the commercial warranty would apply.

²Some engines used on Toro LCE Products are warranted by the engine manufacturer.

³Whichever occurs first.

⁴Lifetime Frame Warranty - If the main frame, consisting of the parts welded together to form the tractor structure that other components such as the engine are secured to, cracks or breaks in normal use, it will be repaired or replaced under warranty at no cost for parts and labor. Frame failure due to misuse or abuse and failure or repair required due to rust or corrosion are not covered.

This warranty includes the cost of parts and labor, but you must pay transportation costs.

Instructions for Obtaining Warranty Service

If you think that your Toro Product contains a defect in materials or workmanship, follow this procedure:

1. Contact your seller to arrange service of the product. If for any reason it is impossible for you to contact your seller, you may contact any Toro Authorized Distributor to arrange service.
2. Bring the product and your proof of purchase (sales receipt) to the Service Dealer.
3. If for any reason you are dissatisfied with the Service Dealer's analysis or with the assistance provided, contact us at:

RLC Customer Care Department

Toro Warranty Company
8111 Lyndale Avenue South
Bloomington, MN 55420-1196
001-952-948-4707

See attached Distributor List.

Owner Responsibilities

You must maintain your Toro Product by following the maintenance procedures described in the *Operator's Manual*. Such routine maintenance, whether performed by a dealer or by you, is at your expense.

Items and Conditions Not Covered

There is no other express warranty except for special emission system coverage and engine warranty coverage on some products. This express warranty does not cover the following:

- Cost of regular maintenance service or parts, such as filters, fuel, lubricants, oil changes, spark plugs, air filters blade sharpening or worn blades, cable/linkage adjustments, or brake and clutch adjustments
- Components failing due to normal wear
- Any product or part which has been altered or misused or neglected and requires replacement or repair due to accidents or lack of proper maintenance
- Pickup and delivery charges
- Repairs or attempted repairs by anyone other than an Authorized Toro Service Dealer
- Repairs necessary due to failure to follow recommended fuel procedure (consult *Operator's Manual* for more details)
 - Removing contaminants from the fuel system is not covered
 - Use of old fuel (more than one month old) or fuel which contains more than 10% ethanol or more than 15% MTBE
 - Failure to drain the fuel system prior to any period of non-use over one month

General Conditions

The purchaser is covered by the national laws of each country. The rights to which the purchaser is entitled with the support of these laws are not restricted by this warranty.