

**TORO**

# High Height-of-Cut Kit

## Greensmaster® DPA Reel Mowers

Model No. 120-9600

### Installation Instructions

#### ▲ WARNING

##### CALIFORNIA Proposition 65 Warning

This product contains a chemical or chemicals known to the State of California to cause cancer, birth defects, or reproductive harm.

1. Disengage the drives, lower the reels, set the parking brake, and stop the engine before adjusting the rollers.
2. Loosen the screws securing the front roller shaft to the height-of-cut arms (Figure 1).
3. Remove the front roller (Figure 1).
4. Remove the plow bolts, washers and nuts securing the height-of-cut arms to the cutting unit side plate (Figure 1).
5. Remove the height-of-cut arms.
6. Remove the adjusting screws from the height-of-cut arms (Figure 1).
8. Loosely mount the height-of-cut arms to the cutting unit side plates with the plow bolts, washers, and nuts previously removed.
9. Install the roller into the height-of-cut arms.
10. Center the roller between the height-of-cut arms. Install and tighten the new screws securing the roller shaft to the height-of-cut arms.
11. Remove the screws and nuts securing the rear roller brackets and spacers to the side plate mounting flanges (Figure 2). Discard the screws and nuts.

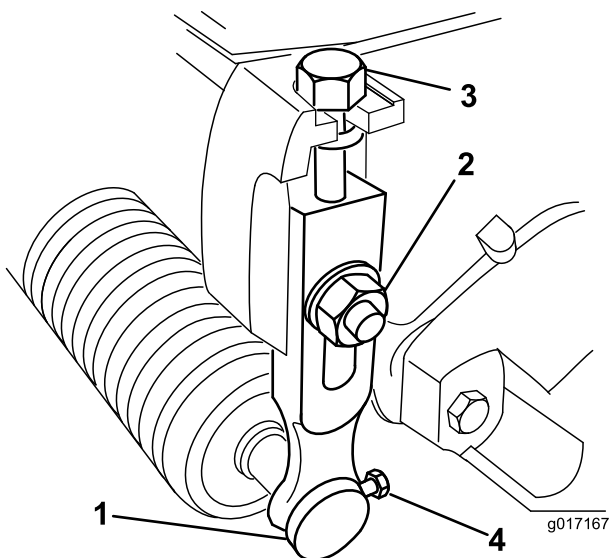


Figure 1

- |                                      |                    |
|--------------------------------------|--------------------|
| 1. Height-of-cut arm                 | 3. Adjusting screw |
| 2. Plow bolt, washer, and flange nut | 4. Screw           |

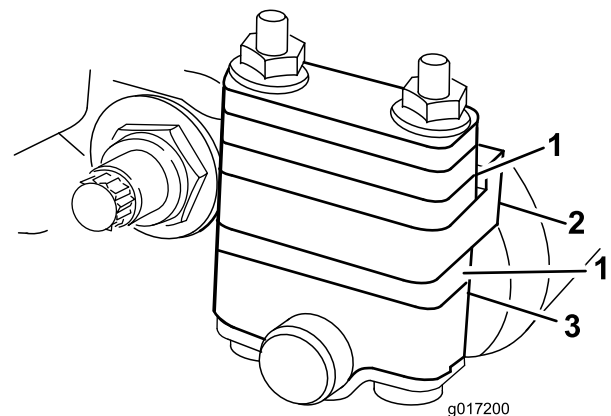


Figure 2

- |                               |                        |
|-------------------------------|------------------------|
| 1. Spacers                    | 3. Rear roller bracket |
| 2. Side plate mounting flange |                        |

**Note:** Older Flex 21 cutting units do not have a side plate mounting flange (Figure 2). Skip steps 11-14 if the kit is being installed on an older model unit and discard the spacers.

7. Apply an anti-seize lubricant to the threads of the adjusting screws. Thread the screws into the new height-of-cut arms.



12. Use the chart below to determine the amount of spacers that need to be positioned below the side plate mounting flanges to attain the desired height-of-cut.

Rear Roller Spacers	Height-of-Cut (mm)	Height-of-Cut (inches)
0	9.5 to 11.9 mm	0.375 to 0.469 inches
1	>11.9 to 14.3 mm	0.469 to 0.563 inches
2	>14.3 to 16.7 mm	0.563 to 0.656 inches
3	>16.7 to 19.1 mm	0.656 to 0.750 inches
4	>19.1 mm	0.750 inches

13. Using the screws, included in the kit, install the rear roller brackets and the required amount of spacers to the under side of the side plate mounting flanges.
14. Install the remaining spacers onto the screws above the side plate mounting flanges and secure with the supplied nuts.
15. Adjust to the desired height of cut and tighten the height-of-cut arm mounting fasteners.

**Note:** As the reel wears, the standard height-of-cut arms may need to be installed to attain desired height of cut.