



## Loose Steering Valve Retaining Bolts

**Product: Reelmaster® 5010 Products**

**August 7, 2014**

<b>Affected Units:</b>	<b>Models:</b>	<b>Serial Numbers:</b>
Reelmaster 5410-D T4i/ROW & CANADA	03670	314000103 – 314000193
Reelmaster 5410-D T4	03672	314000147 – 314000162
Reelmaster 5410-D T4i/ROW & CANADA	03675	315000101 - 315000161
Reelmaster 5510-D T4i/ROW & CANADA	03676	315000101 - 315000127
Reelmaster 5610-D T4i/ROW & CANADA	03680	314000144 - 314000247
Reelmaster 5610-D T4	03687	314000137 - 314000146
Reelmaster 5510-G	03689	314000101 - 314000113
Reelmaster 5610-D T4i/ROW 2WD & CAN	03690	314000110 - 314000135
Reelmaster 5610-D JAPAN/ROW 4WD	03691	314000123 - 314000208
Reelmaster 5410-D USA	03670N	314000101 - 314000229
Reelmaster 5410-D T4 USA	03672A	314000101 - 314000129
Reelmaster 5410-D USA	03675N	315000105 - 315000146
Reelmaster 5510-D T4i/ROW & CANADA	03676N	315000102 - 315000143
Reelmaster 5510-D 2WD USA	03677N	315000101 - 315000120
Reelmaster 5610-D USA	03680N	314000101 - 314000347
Reelmaster 5610-D T4	03687A	314000101 - 314000118
Reelmaster 5610-D USA	03690N	314000101 - 314000154

---

On Reelmaster 5010's built between Jan 1, 2014 and July 30, 2014. The four hex-socket-head cap screws fastening the steering valve to the steering column may not have been tightened to the proper torque specification. The bolts could back out causing the steering valve to separate from the steering column, which could result in a loss of steering. To address this issue, a mandatory product rework has been issued.

The rework will be conducted free of charge by your local Toro Commercial Products Distributor or Dealer. The rework consists of verifying the bolts are torqued to the proper specification.

The affected unit(s) should not be operated until the steering valve bolt torque has been verified. If you chose to continue to operate an affected unit you **MUST** check that the bolts are torqued to 7lb\*ft (9N\*m) following the attached instructions and then have the bolt torque validated by the Toro Distributor once an appointment has been scheduled.

Contact your local Toro Commercial Products Distributor for more details about this rework program and to schedule an appointment to have your machine(s) inspected. Please reference Commercial Service Bulletin Rotaries #10-02 when making your inquiry or scheduling your appointment.

## Installation Instructions

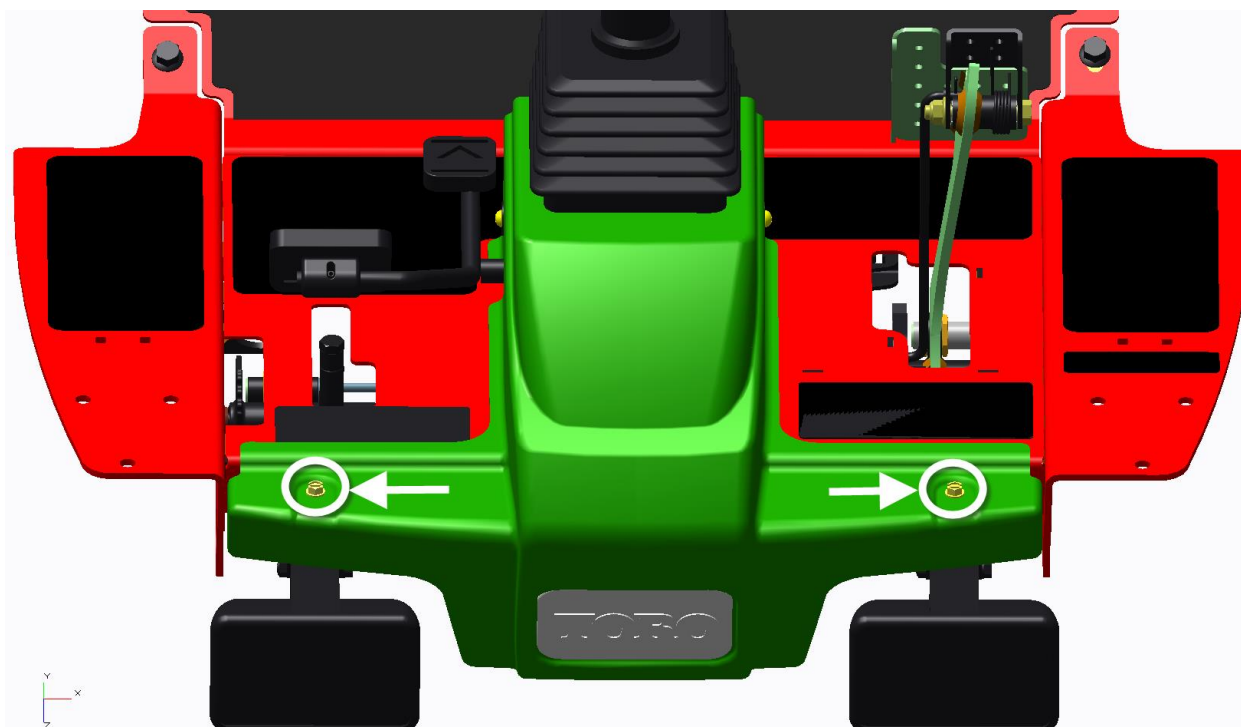
---

### Situation:

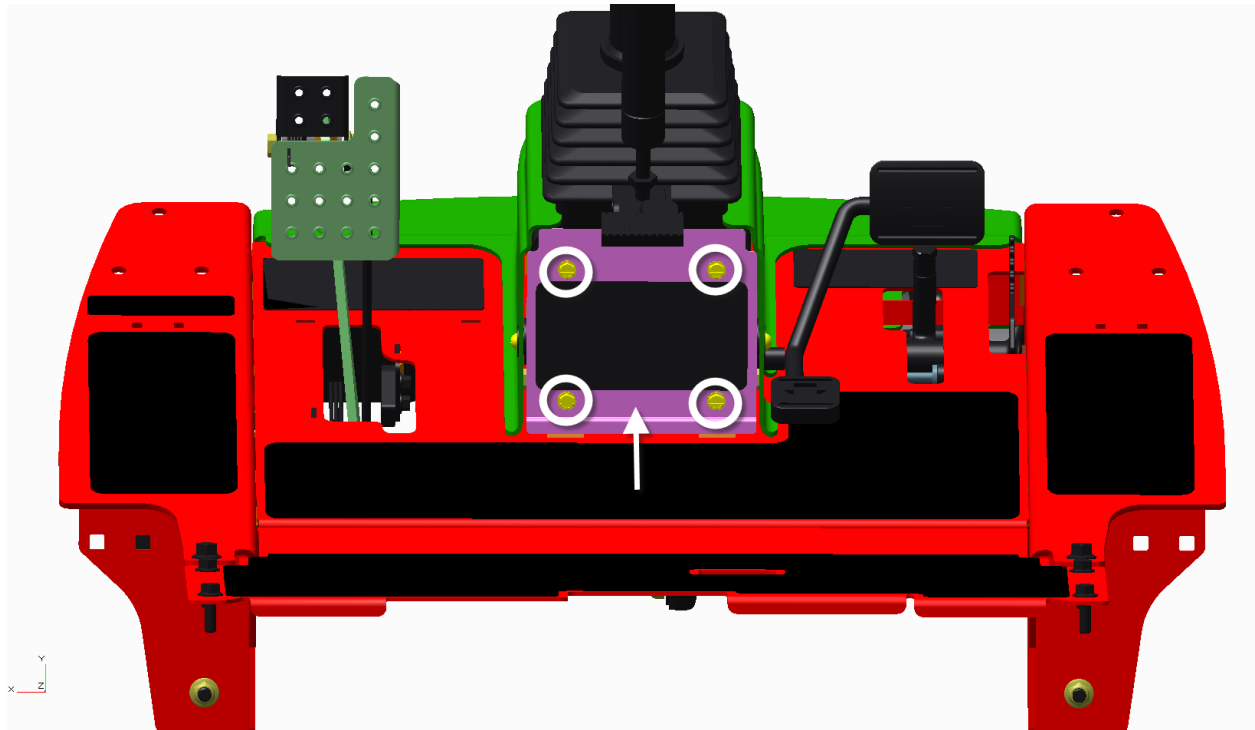
Torque steering valve bolts on all affected units to 7 lb-ft (9N-m).

### Instructions:

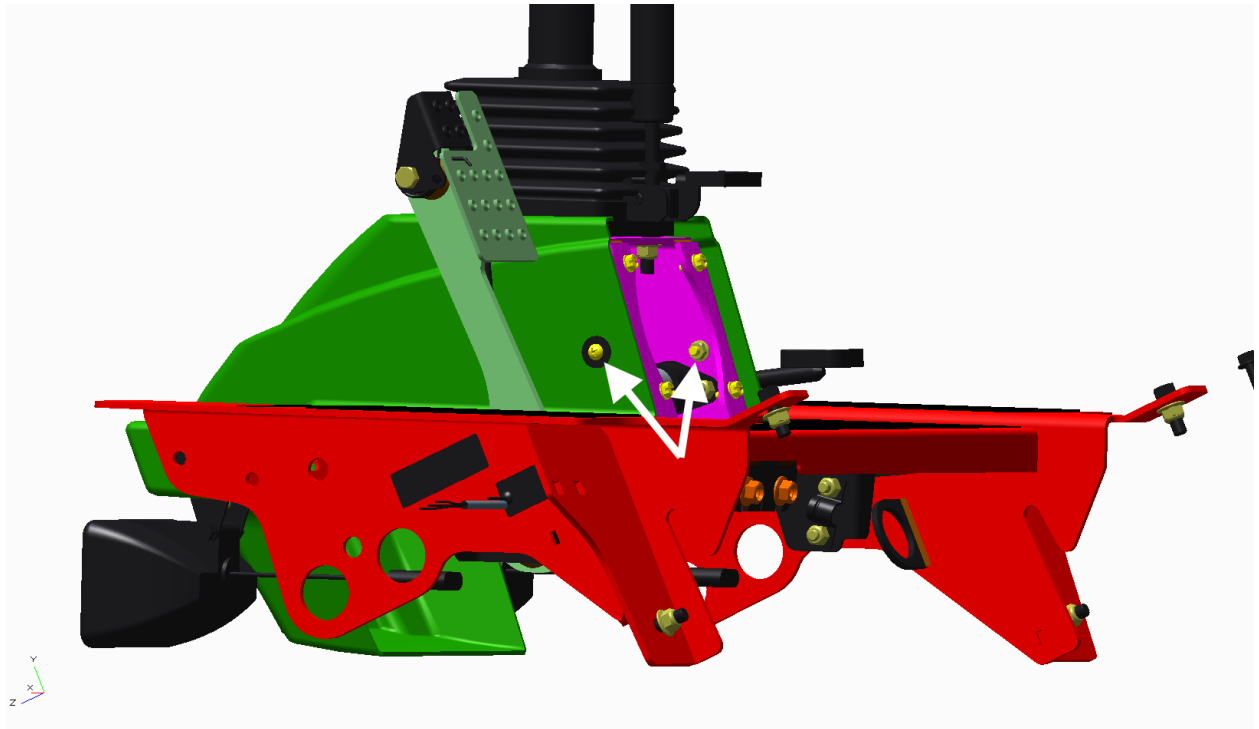
1. Remove two bolts



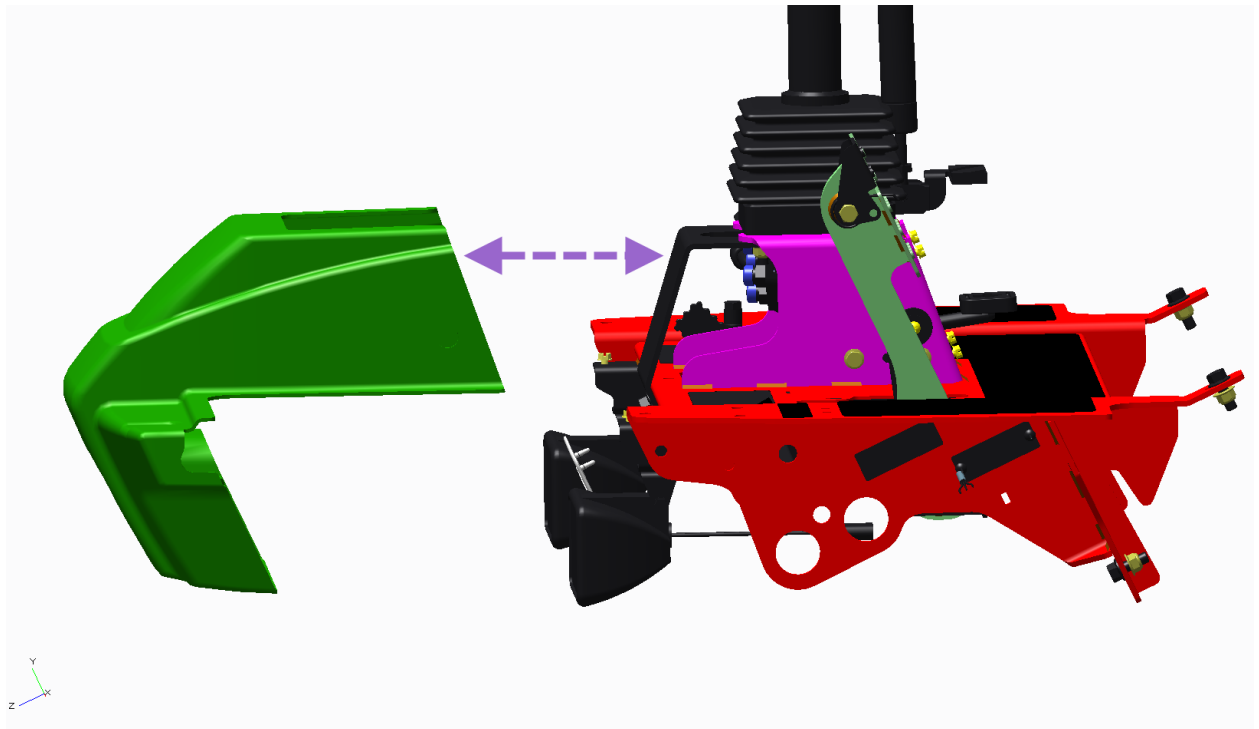
2. Remove four bolts. Remove cover



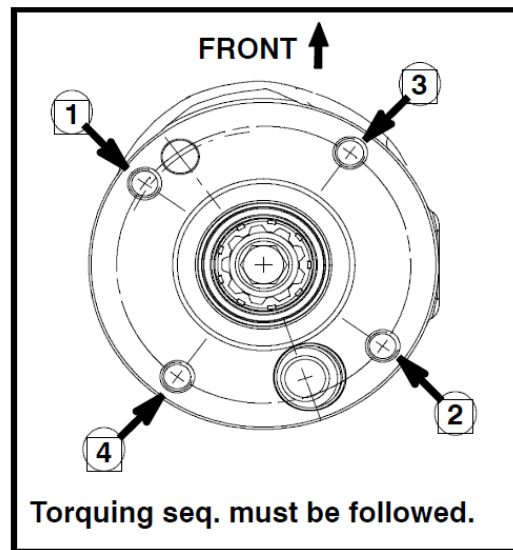
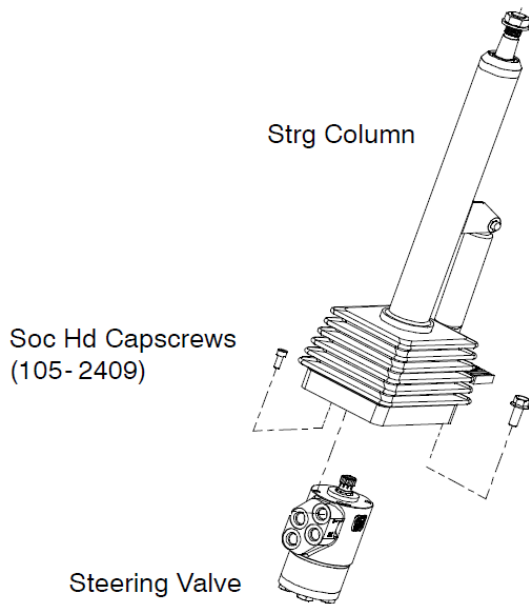
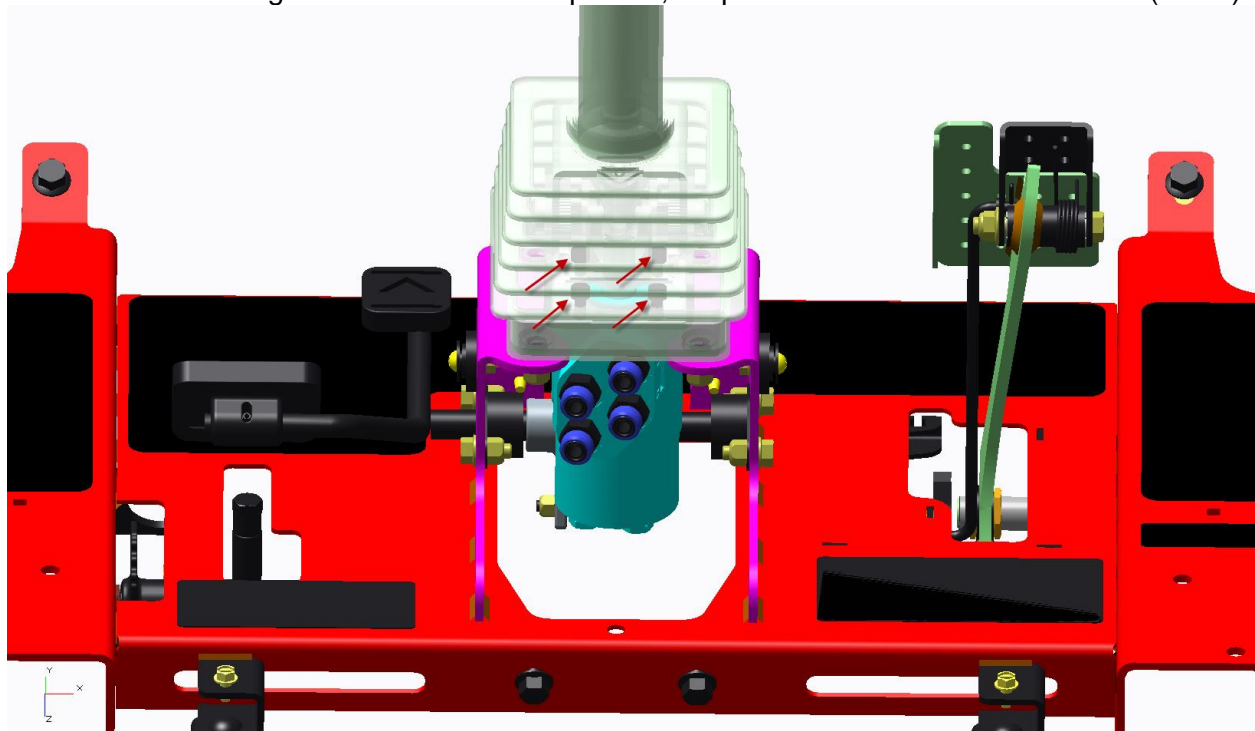
3. Remove two side bolts.



4. Remove shroud.



5. Lift rubber steering boot. In a criss cross pattern, torque four allen head bolts to 7lb\*ft (9N\*m).



6. Assemble in reverse order.