



Wheel Tooth Kit

STX-26 or STX-38 Stump Grinder

Model No. 115-9385

Installation Instructions

⚠ WARNING

CALIFORNIA Proposition 65 Warning

This product contains a chemical or chemicals known to the State of California to cause cancer, birth defects, or reproductive harm.

Installing the Kit

Due to the high amount of wear placed on the teeth, rotate and replace them periodically.

To install a tooth, align 1 of the 3 flat sides with the flat side on the cutting wheel. Secure the tooth with a spacer and nut and torque the nut to 37 to 45 N-m (27 to 33 ft-lb).

Each tooth is indexed with 3 positions so that you can rotate it twice, exposing a new sharp edge before replacing the tooth. To rotate a tooth, loosen the nut securing the tooth (Figure 1). Push the tooth forward and rotate it 1/3 of a turn, bringing an unused edge to the outside. Torque the nut securing the tooth to 37 to 45 N-m (27 to 33 ft-lb).

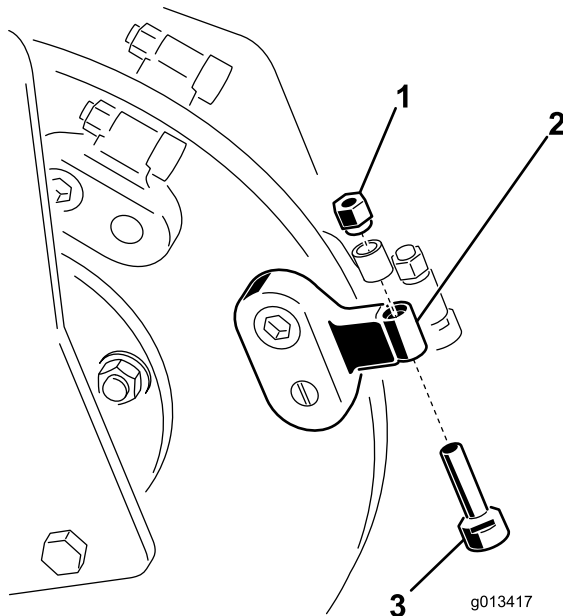


Figure 1

1. Nut
2. Tooth holder

3. Tooth

