



**Z Stand® Kit**  
**200 and 500 Series Z Master®**  
 Model No. 105-1622

## Installation Instructions

### ⚠ WARNING

**CALIFORNIA**  
**Proposition 65 Warning**

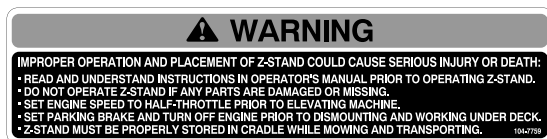
This product contains a chemical or chemicals known to the State of California to cause cancer, birth defects, or reproductive harm.

## Safety

### Safety and Instructional Decals



Safety decals and instructions are easily visible to the operator and are located near any area of potential danger. Replace any decal that is damaged or lost.



104-7759

## Installation

### Loose Parts

Use the chart below to verify that all parts have been shipped.

Description	Qty.	Use
Hub	1	Assemble the Z Stand hub.
Bracket latch	1	
Bolt (3/8 x 1-1/2 inches)	1	
Lock nut (3/8 inch)	1	
Bolt (3/8 x 3-1/2 inches)	2	Install the Z Stand hub.
Lock nut (3/8 inch)	2	



Description	Qty.	Use
Z Stand	1	Install the Z Stand.
Washers	2	
Lynch pin	1	
Hair pin cotter pin	1	
Clevis pin	1	
Bracket	1	Install the Z Stand bracket.
Bolt (5/16 x 3-1/4 inches)	1	
Lock nut (5/16 inch)	1	
Bolt (1/4 x 3/4 inches)	1	
Lock nut (1/4 inch)	1	
Lanyard	1	

**Note:** The following instructions are for installing the Z Stand® on a 200 or 500 Series Z Master.

## Assembling the Z Stand Hub

1. Install the bracket latch to the hub with a bolt (3/8 x 1-1/2 inches) and lock nut (3/8 inch) (Figure 1).
2. Tighten the lock nut and bolt. Then, unscrew it one full turn or until the latch will freely rotate (Figure 1).

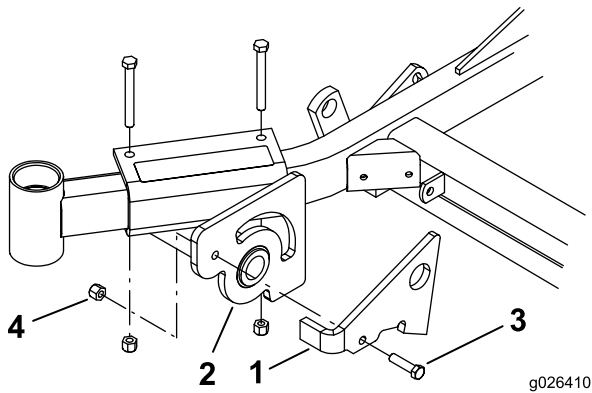


Figure 1

- |                  |                              |
|------------------|------------------------------|
| 1. Bracket latch | 3. Bolt (3/8 x 1-1/2 inches) |
| 2. Hub           | 4. Lock nut (3/8 inch)       |

## Installing the Z Stand Hub

1. Place the hub on the right front frame as shown in Figure 2 and Figure 3.
2. Install the hub assembly the specific distance from the caster housing as shown in Figure 2 and listed below.
  - 52 inch mower decks = 32 mm (1-1/4 inches)
  - 60/62 inch mower decks = 70 mm (2-3/4 inches)
  - 72 inch mower decks = 165 mm (6-1/2 inches)

**Note:** Note the location to attach hub to front frame is determined by the size deck you have.

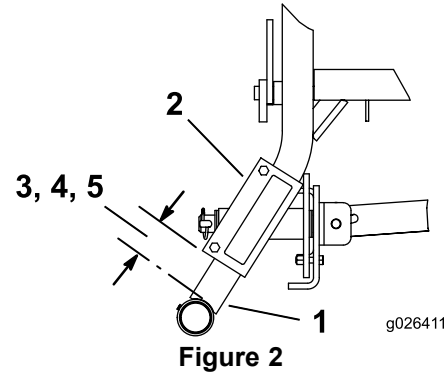


Figure 2

- |   |  |
|---|--|
| 1. Right front frame                        | 4. 70 mm (2-3/4 inches)—62 inch mower decks  |
| 2. Hub                                      | 5. 165 mm (6-1/2 inches)—72 inch mower decks |
| 3. 32 mm (1-1/4 inches)—52 inch mower decks |  |
- 
3. Install the hub to frame with 2 bolts (3/8 x 3-1/2 inches) and 2 lock nuts (3/8 inch) (Figure 3).

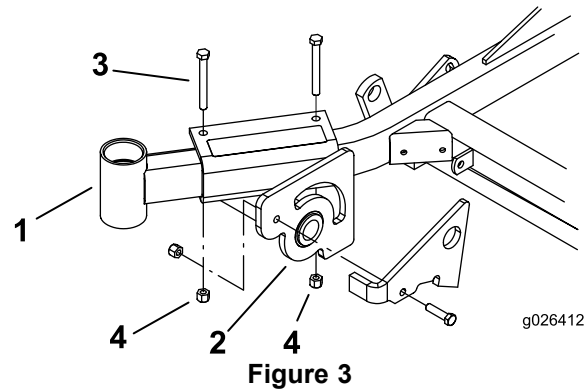


Figure 3

- |                      |                              |
|----------------------|------------------------------|
| 1. Right front frame | 3. Bolt (3/8 x 3-1/2 inches) |
| 2. Hub               | 4. Lock nuts (3/8 inch)      |

# Installing the Z Stand

1. Place only 1 thrust washer onto the pivot pin (Figure 4).

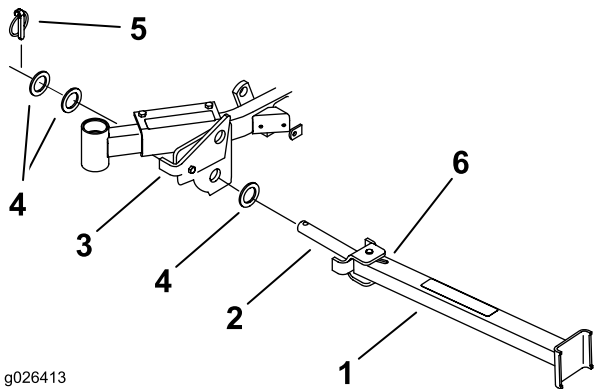
**Note:** Do not use more than 1 thrust washer next to the Z Stand tube.

2. Insert the pivot pin into the hub as shown in Figure 4.

**Note:** When inserting the pivot pin, make sure the position of the slot in the Z Stand tube is as shown in Figure 4.

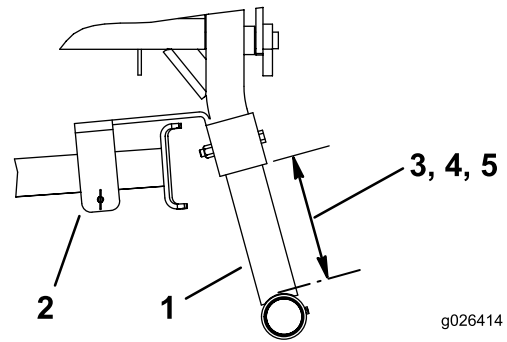
3. Place as many thrust washers onto the end of the pivot pin without forcing the lynch pin into the hole (Figure 4).

4. Install the lynch pin (Figure 4).



**Figure 4**

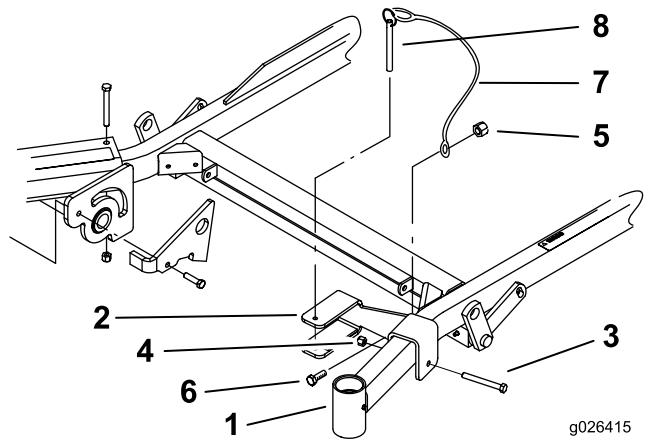
- |              |                     |
|--------------|---------------------|
| 1. Z Stand   | 4. Thrust washer    |
| 2. Pivot pin | 5. Lynch pin        |
| 3. Hub       | 6. Slot in the tube |



**Figure 5**

- |  |  |
|--|--|
| 1. Left-front caster frame               | 4. 175 mm (6-7/8 inches)—62 inch mower decks |
| 2. Z Stand bracket                       | 5. 248 mm (9-3/4 inches)—72 inch mower decks |
| 3. 127 mm (5 inches)—52 inch mower decks |  |

3. Install the bracket with a bolt (5/16 x 3-1/4 inches) and a lock nut (5/16 inch) (Figure 6).
4. Install the lanyard to the bracket pin. Use the large loop on the lanyard (Figure 6).
5. Install the lanyard with a bolt (1/4 x 3/4 inches) and lock nut (1/4 inch) (Figure 6).



**Figure 6**

- |                               |                            |
|-------------------------------|----------------------------|
| 1. Left front caster housing  | 5. Lock nut (1/4 inch)     |
| 2. Bracket                    | 6. Bolt (1/4 x 3/4 inches) |
| 3. Bolt (5/16 x 3-1/4 inches) | 7. Lanyard                 |
| 4. Lock nut (5/16 inch)       | 8. Bracket pin             |

# Installing the Z Stand Bracket

1. Place the bracket on the left front frame as shown in Figures Figure 5 and Figure 6.

2. Install the bracket the specific distance from the caster frame as shown in Figure 5 and listed below.

52 inch mower decks = 127 mm (5 inches)

60/62 inch mower decks = 175 mm (6-7/8 inches)

72 inch mower decks = 248 mm (9-3/4 inches)

**Note:** The location to attach the bracket to the front frame is determined by the mower deck size you have.

# Operation

## Using the Z Stand

The Z Stand is used for raising the front end of the machine. This allows for cleaning of the deck and removal of the blades.

### **⚠ WARNING**

The machine could fall onto someone and cause serious injury or death.

- Use extreme caution when operating the machine on the Z Stand.
- Use the Z Stand only for cleaning deck and removing blades.
- Do not keep the machine on the Z Stand for extended periods of time.
- Always shut the engine off and set the parking brake.

## Driving up onto the Z Stand

1. Raise the mower to transport position.
2. Remove the bracket pin (Figure 7).

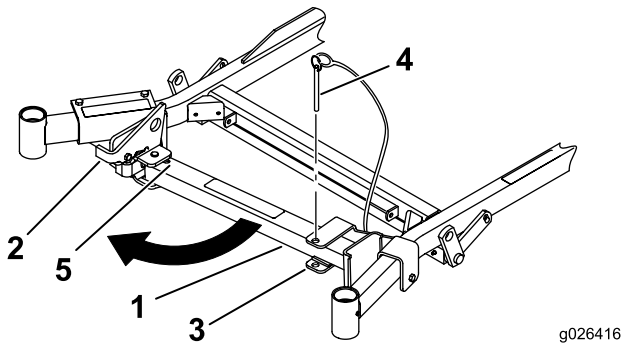


Figure 7

- |            |                   |
|------------|-------------------|
| 1. Z Stand | 4. Bracket Pin    |
| 2. Latch   | 5. Bottom of slot |
| 3. Bracket |                   |

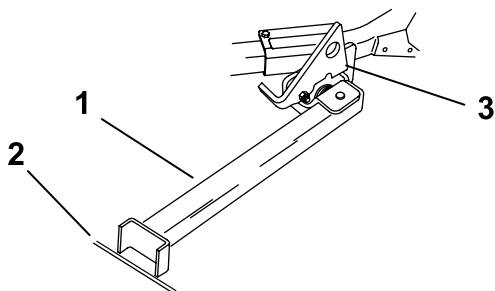


Figure 8

- |                                     |                                   |
|-------------------------------------|-----------------------------------|
| 1. Z Stand (Positioned in the slot) | 3. Latch resting on the pivot tab |
| 2. Crack in the side walk or turf   |                                   |

3. Raise the latch. Swing the stand foot out to the front and slide the stand toward the machine, into the bottom of slot (Figure 7 and Figure 8).
4. Set the foot of the stand on the ground and rest the latch on pivot tab (Figure 8).
5. Start the engine and place the throttle at half throttle.

**Note:** For best results, place the foot of stand into seams in sidewalks or into turf (Figure 8).

6. Drive onto the stand. Stop when latch drops over tab into the locked position (Figure 9). Once onto the stand, engage the parking brake. Shut off the engine.
7. Chock or block the drive wheels.

### **⚠ WARNING**

The parking brake may not hold machine parked on the Z Stand and could cause personal injury or property damage.

Do not park on the Z Stand unless the wheels are chocked or blocked.

8. Perform your maintenance.
9. Remove the chocks or blocks.

## Driving off the Z Stand

1. Raise the latch to the unlocked position (Figure 9).
2. Start the engine and place the throttle at half throttle.
3. Disengage the parking brake.
4. Slowly drive backwards off of the stand.
5. Return the stand to its rest position (Figure 7).

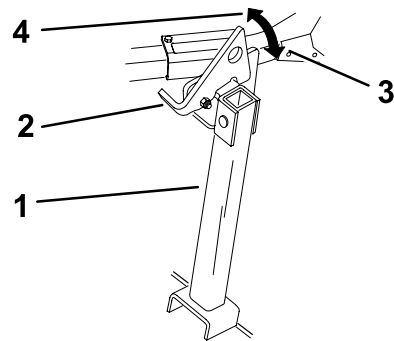


Figure 9

- |            |                      |
|------------|----------------------|
| 1. Z Stand | 3. Locked position   |
| 2. Latch   | 4. Unlocked position |