



Count on it.

Parts Catalog

**TimeCutter® SS 5000 Riding
Mower**

Model No. 74637—Serial No. 314000001 and Up



Ordering Replacement Parts

To order replacement parts, please supply the part number, the quantity, and the description of each part desired.

Understanding Reference Numbers

Each identified part in an illustration has a reference number. The reference number for a part also appears in the parts list, along with other information about the part.

This catalog uses two special reference number formats, one to indicate parts in a service assembly and another to indicate the quantity of a given part in an illustration.

Service Assembly Reference Numbers

Parts in service assemblies have reference numbers in the form a:b. The a represents the reference number of the entire service assembly and the b represents a sequential number unique to each part within the service assembly.

For example, a wheel assembly might be identified by reference number 6, the tire by 6:1, the valve by 6:2, and the wheel by 6:3. When you order the assembly identified by reference number 6, you receive all parts identified by reference numbers 6:1, 6:2, and 6:3. However, you may also order any part individually. Reference numbers of this type appear in illustration and in parts lists.

Reference Numbers Indicating Quantity

In an illustration, if a reference number indicates more than one part, the reference number has the form nX y. The n represents the quantity of the part, the X is the multiplication symbol, and the y represents the reference number.

For example, in an illustration, the reference number 2X 37 means that two of the parts identified by reference number 37 are indicated.

List of Abbreviations

AR: as required

ASM: assembly

BBC: blade brake control

BHTF: button head thread forming

CARR: carriage

CCW: counter clockwise

CW: clockwise

DEG: degrees

DPA: Dual Point Adjustment

ECM: electronic control module

EXT: external

FH: flat head

GA: gauge

HD: heavy-duty

HF: hex flange

HH: hex head

HHF: hex head flange

HHFTF: hex head flange thread forming

HJ: hex jam

HLH: hex lag head

HOC: height-of-cut

HSBH: hex socket button head

HSFH: hex socket flat head

HSH: hex socket head

HWH: hex washer head

HWHTF: hex washer head thread forming

HYD: hydraulic

LH: left hand

LP: Liquefied Petroleum Gas

LPG: Liquefied Petroleum Gas

NI: nylon insert

NPTF: national pipe thread fine

PFH: phillips flat head

PPH: phillips pan head

PPHTF: phillips pan head thread forming

PRH: phillips round head

PTH: phillips truss head

PTO: power-take-off

RH: right hand

ROPS: roll-over protection system

RRB: rear roller brush

SFH: slotted fillister head

SHH: slotted hex head

SHWH: slotted hex washer head

SPH: slotted pan head

SQH: square head

SRH: slotted round head

STD: standard

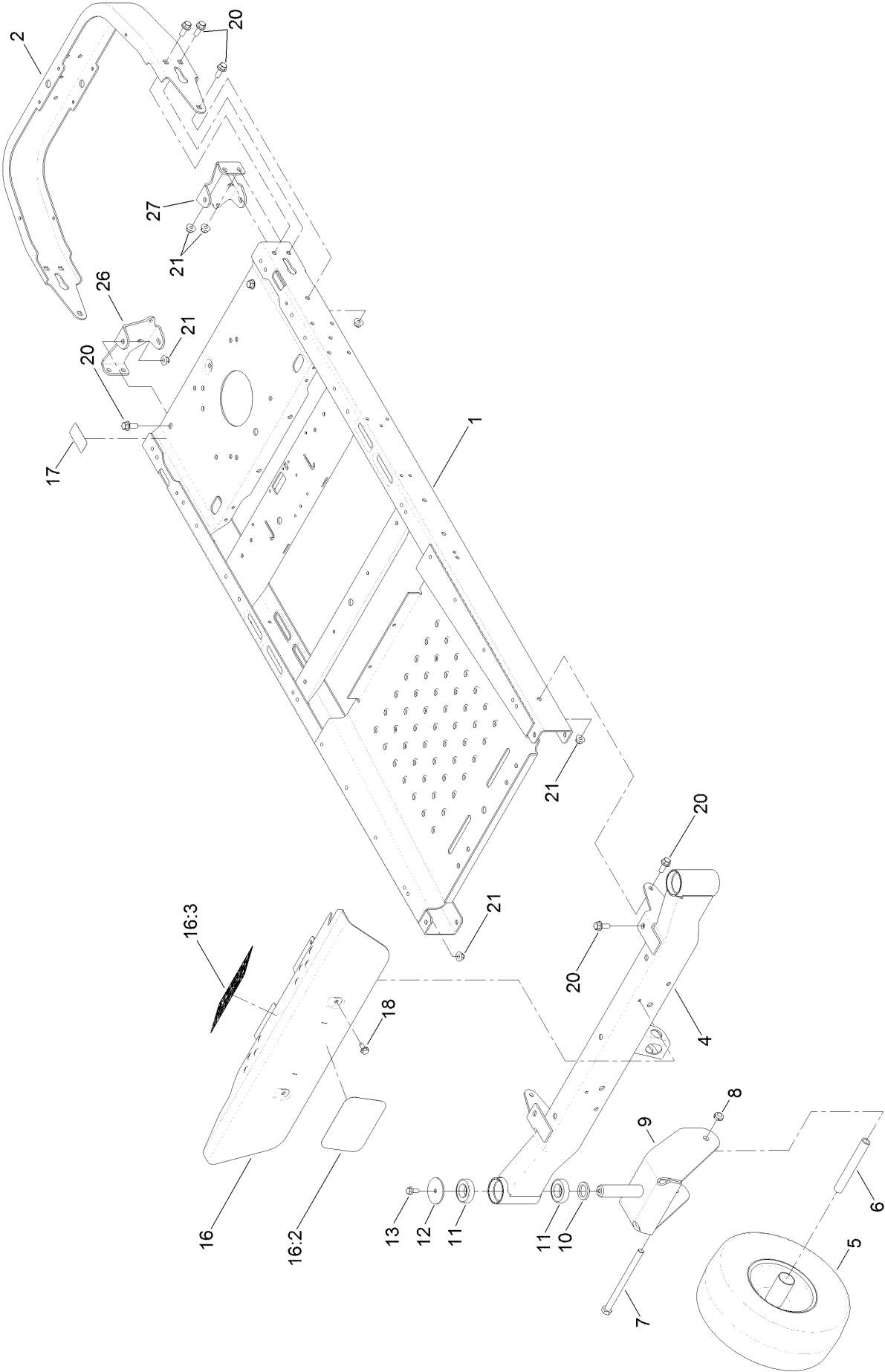
TAP: self tapping

TTH: torx truss head

Contents

| | |
|--|----|
| Frame, Front Axle and Caster Wheel Assembly | 4 |
| 13 Inch Wheel and Tire Assembly No. 119-3473 | 6 |
| Motion Control Assembly | 8 |
| Belt and Pulley Assembly | 10 |
| Hydro Transaxle Drive and Rear Wheel Assembly | 12 |
| Left Hand Hydro Transaxle Assembly No. 119-3350 | 14 |
| Right Hand Hydro Transaxle Assembly No. 119-3351 | 16 |
| Clutch Assembly | 18 |
| Engine and Muffler Assembly | 20 |
| Body Styling and Fuel Pod Assembly | 22 |
| Fuel Delivery Assembly | 24 |
| Battery and Electrical Assembly | 26 |
| Seat Assembly | 28 |
| Deck Lift Assembly | 30 |
| 50 Inch Deck Assembly | 32 |
| 50 Inch Deck Decal Assembly No. 119-8841 | 34 |
| 50 Inch Deck Belt, Spindle and Blade Assembly | 36 |
| Attachments and Accessories | 38 |

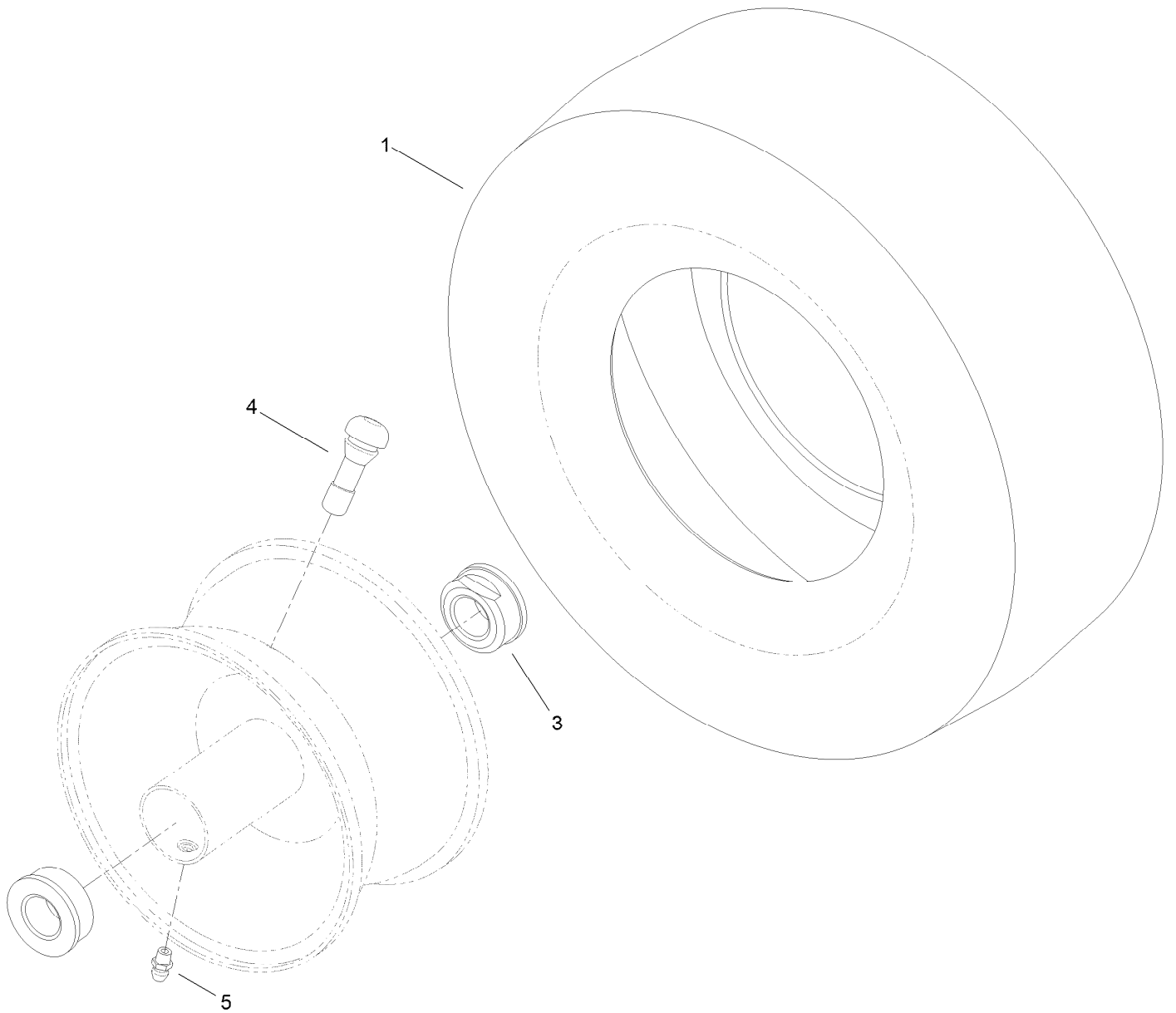
Frame, Front Axle and Caster Wheel Assembly



Frame, Front Axle and Caster Wheel Assembly (continued)

| <i>Ref.</i> | <i>Part Number</i> | <i>Qty.</i> | <i>Description</i> | <i>Ref.</i> | <i>Part Number</i> | <i>Qty.</i> | <i>Description</i> |
|-------------|--------------------|-------------|-------------------------------|-------------|--------------------|-------------|------------------------|
| 1 | 120-7963-01 | 1 | Frame | 12 | 119-8915 | 2 | Washer |
| 2 | 117-7415-01 | 1 | Bumper-Rear (Wide) | 13 | 3234-47 | 2 | Screw-HHF |
| 4 | 120-5513-01 | 1 | Axle-Front, Wide | 16 | 125-0074 | 1 | Footrest ASM |
| 5 | 119-3473 | 2 | 13 Inch Wheel And Tire ASM | 16:2 | 99-4693 | 1 | Decal |
| 6 | 119-3475 | 2 | Spanner | 16:3 | 120-2239 | 1 | Decal-Danger |
| 7 | 325-37 | 2 | Screw-HH | 17 | 121-2989 | 2 | Decal-Bypass |
| 8 | 3296-45 | 2 | Nut-Lock, NI | 18 | 32144-70 | 2 | Screw-HWHTF |
| 9 | 119-3349-01 | 2 | Fork-Caster (Wide) | 20 | 3234-42 | 14 | Screw-HHF |
| 10 | 117-7394 | 2 | Washer-Thrust | 21 | 104-8301 | 14 | Nut-Flange, NI |
| 11 | 109-3678 | 4 | Bearing-Ball | 26 | 121-0737-01 | 1 | Mount-Hydro, Rear (RH) |
| | | | | 27 | 121-0738-01 | 1 | Mount-Hydro, Rear (LH) |

13 Inch Wheel and Tire Assembly No. 119-3473

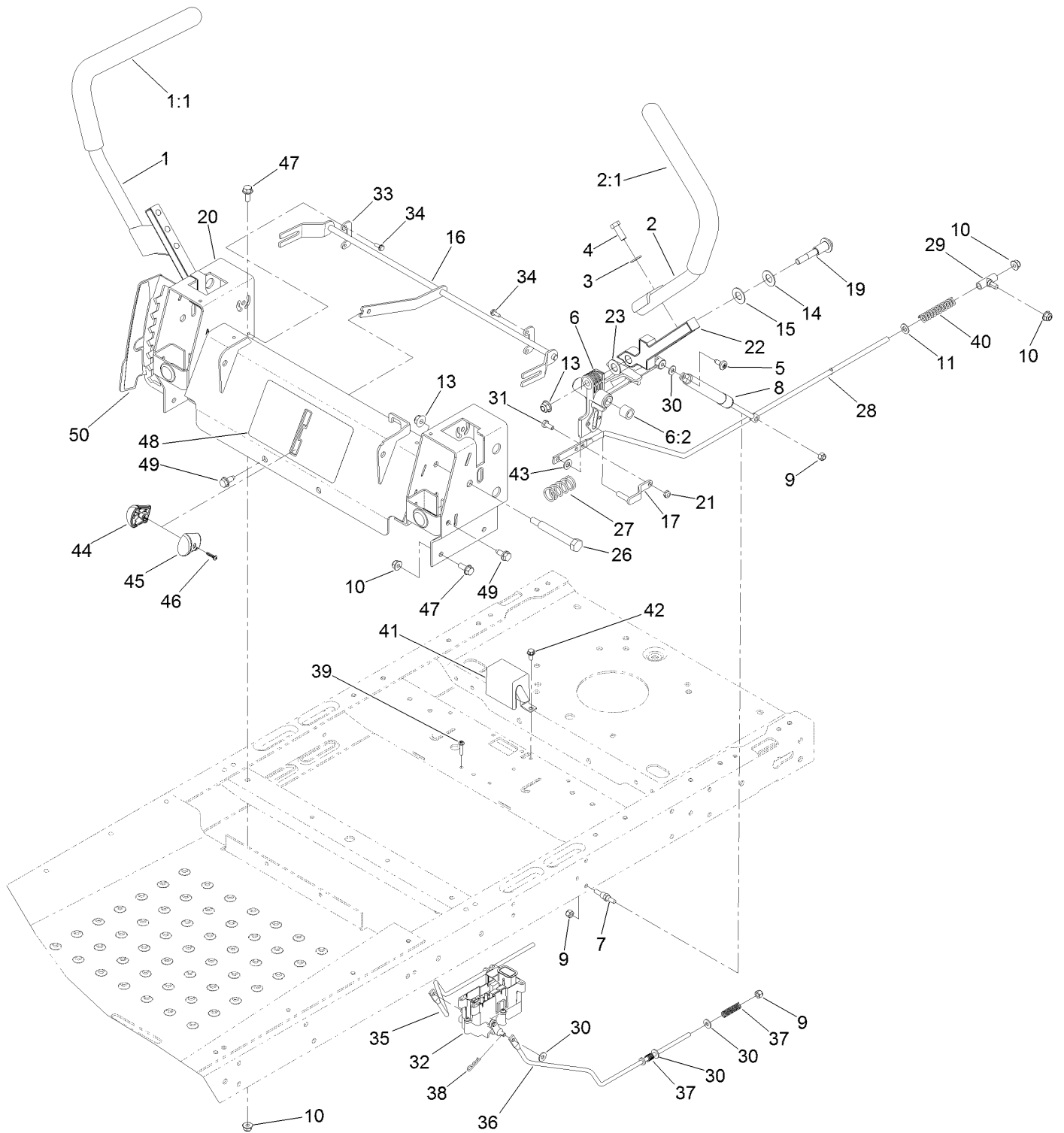


13 Inch Wheel and Tire Assembly No. 119-3473 (continued)

| <i>Ref.</i> | <i>Part Number</i> | <i>Qty.</i> | <i>Description</i> |
|-------------|--------------------|-------------|--------------------|
| 1 | 119-3471 | 1 | Tire-13 Inch |
| 3 | 114-1640 | 2 | Bushing-Flange |

| <i>Ref.</i> | <i>Part Number</i> | <i>Qty.</i> | <i>Description</i> |
|-------------|--------------------|-------------|--------------------|
| 4 | 232-27 | 1 | Stem-Valve |
| 5 | 302-5 | 1 | Fitting-Grease |

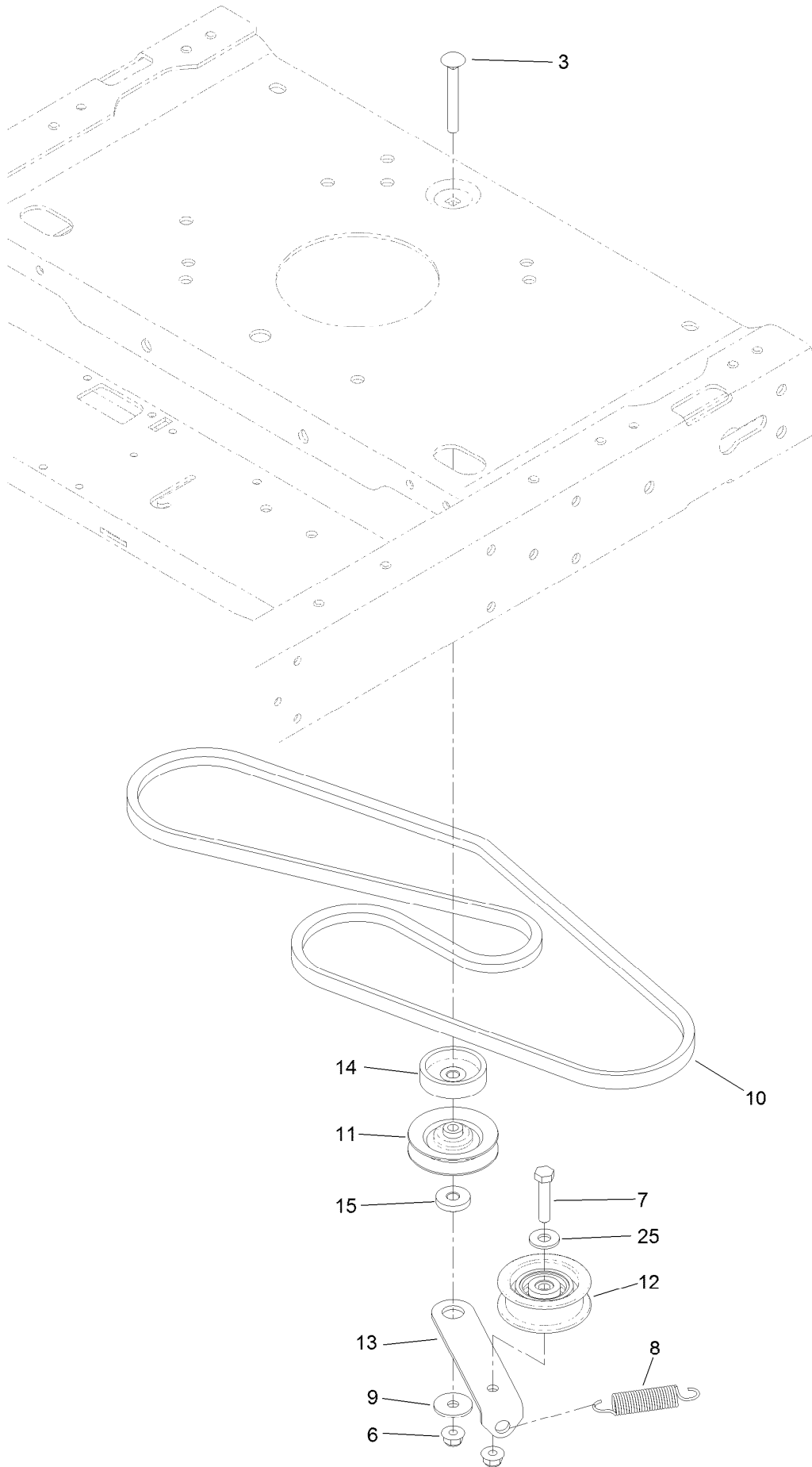
Motion Control Assembly



Motion Control Assembly (continued)

| <i>Ref.</i> | <i>Part Number</i> | <i>Qty.</i> | <i>Description</i> | <i>Ref.</i> | <i>Part Number</i> | <i>Qty.</i> | <i>Description</i> |
|-------------|--------------------|-------------|------------------------|-------------|--------------------|-------------|--------------------------|
| 1 | 121-0731 | 1 | Handle-Control, RH | 27 | 119-8876 | 2 | Spring-Return |
| 1:1 | 121-0726 | 1 | Grip | 28 | 117-5388 | 2 | Rod-Hydro |
| 2 | 121-0730 | 1 | Handle-Control, LH | 29 | 119-8842 | 2 | Mount-Rod, Hydro |
| 2:1 | 121-0726 | 1 | Grip | 30 | 119-8952 | 8 | Washer |
| 3 | 3256-24 | 4 | Washer-Flat | 31 | 321-3 | 2 | Screw-HH |
| 4 | 323-6 | 4 | Screw-HH | 32 | 121-3017 | 1 | Brake Control Module ASM |
| 5 | 120-7950 | 2 | Screw-Shoulder | 33 | 117-5385 | 2 | Retainer |
| 6 | 119-3470 | 2 | Actuator Arm ASM | 34 | 32144-1 | 4 | Screw-Taptite |
| 6:2 | 256-156 | 2 | Bushing-Flange | 35 | 121-2976 | 1 | Rod-Brake, Wide (RH) |
| 7 | 110-6810 | 2 | Stud-Damper | 36 | 121-2977 | 1 | Rod-Brake, Wide (LH) |
| 8 | 103-2913 | 2 | Damper-Control, Motion | 37 | 117-1169 | 4 | Spring-Compression |
| 9 | 3296-42 | 6 | Nut-Lock, NI | 38 | 3290-307 | 2 | Pin-Hair |
| 10 | 104-8300 | 10 | Nut-Flange, NI | 39 | 32144-36 | 4 | Screw-PPH |
| 11 | 3256-23 | 2 | Washer-Flat | 40 | 1-603807 | 2 | Spring-Return, Neutral |
| 13 | 104-8301 | 4 | Nut-Flange, NI | 41 | 119-8859 | 1 | Cover-Brake |
| 14 | 119-8925 | 2 | Washer-Belleville | 42 | 32144-4 | 1 | Screw-HWH |
| 15 | 117-1240 | 2 | Washer | 43 | 93-6079 | 2 | Spacer-Nylon |
| 16 | 119-3300 | 1 | Control-Speed | 44 | 119-8935 | 1 | Knob-RH |
| 17 | 119-3303 | 2 | Pin-Rod, Hydro | 45 | 119-8936 | 1 | Knob-LH |
| 19 | 117-1198 | 2 | Bolt-Pivot | 46 | 94-4496 | 1 | Screw-PPH |
| 20 | 125-5474-03 | 1 | Control Box ASM | 47 | 3234-47 | 6 | Screw-HHF |
| 21 | 3296-56 | 2 | Nut-Lock, NI | 48 | 130-0780 | 1 | Decal-Speed Control |
| 22 | 115-5098-05 | 2 | Lever-Control | 49 | 32144-70 | 4 | Screw-HWHTF |
| 23 | 120-2273 | 2 | Washer-Nylon | 50 | 119-8870 | 1 | Decal-HOC |
| 26 | 115-5099 | 2 | Bolt-Pivot | | | | |

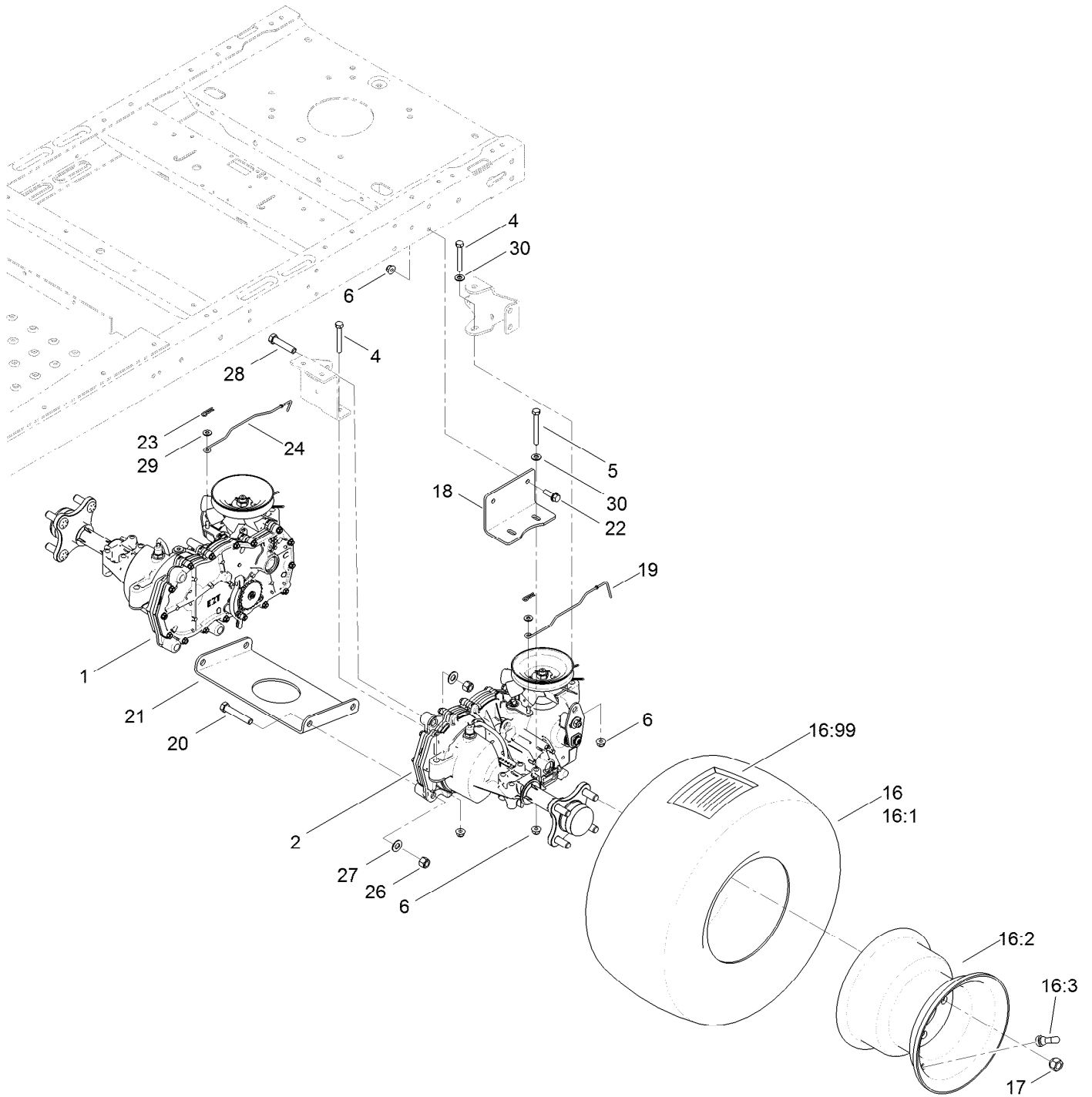
Belt and Pulley Assembly



Belt and Pulley Assembly (continued)

| <i>Ref.</i> | <i>Part Number</i> | <i>Qty.</i> | <i>Description</i> | <i>Ref.</i> | <i>Part Number</i> | <i>Qty.</i> | <i>Description</i> |
|-------------|--------------------|-------------|----------------------|-------------|--------------------|-------------|--------------------|
| 3 | 3230-8 | 1 | Screw-CARR | 11 | 119-8822 | 1 | Pulley-Idler |
| 6 | 104-8300 | 2 | Nut-Flange, NI | 12 | 106-2176 | 1 | Pulley-Idler |
| 7 | 322-7 | 1 | Screw-HH | 13 | 119-3326 | 1 | Arm-Idler |
| 8 | 104-6415 | 1 | Spring-Return, Pedal | 14 | 119-3353 | 1 | Spacer |
| 9 | 5-4460 | 1 | Washer-Pivot | 15 | 119-3327 | 1 | Spacer-Arm, Idler |
| 10 | 119-3321 | 1 | V-Belt | 25 | 3256-3 | 1 | Washer-Flat |

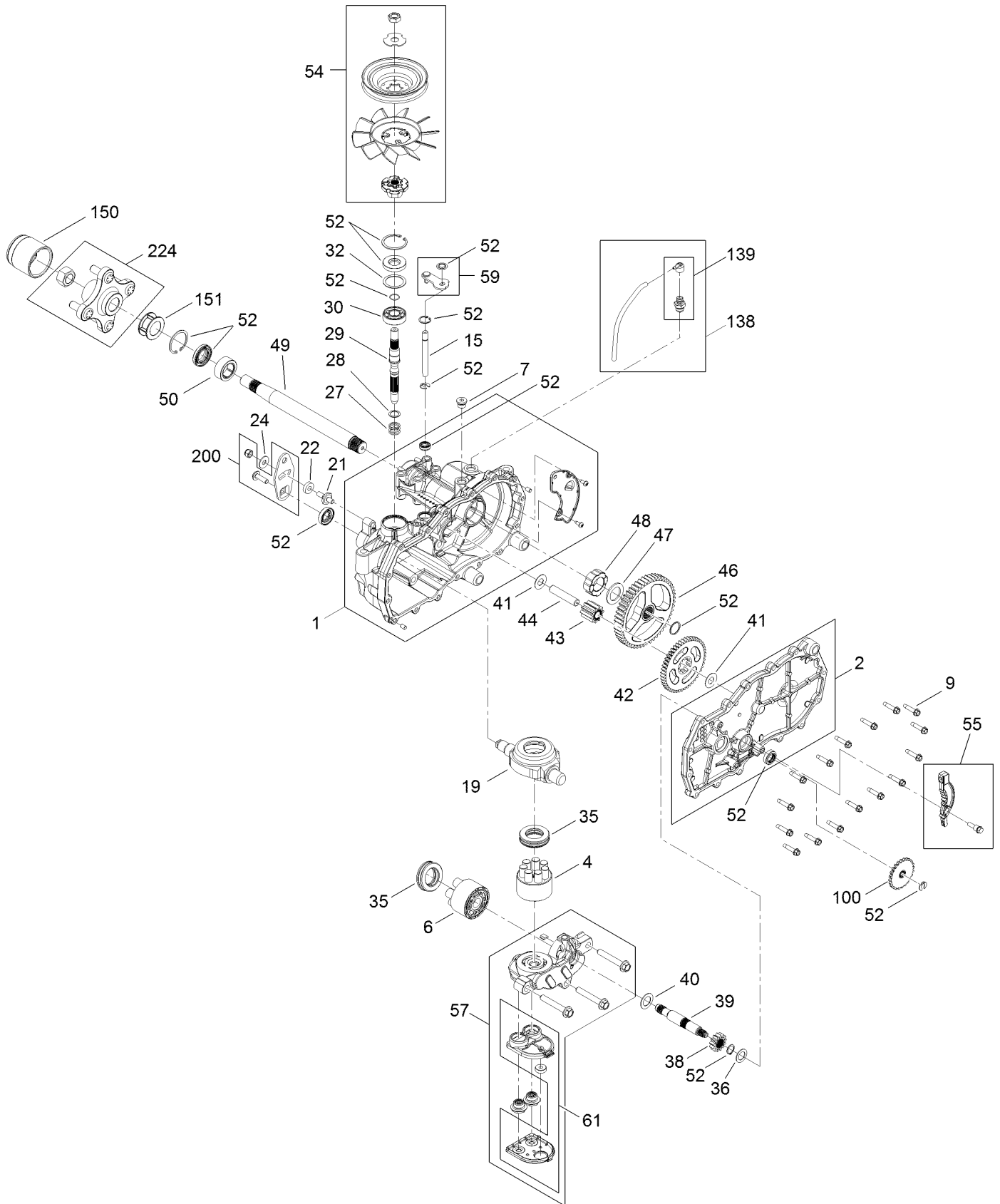
Hydro Transaxle Drive and Rear Wheel Assembly



Hydro Transaxle Drive and Rear Wheel Assembly (continued)

| <i>Ref.</i> | <i>Part Number</i> | <i>Qty.</i> | <i>Description</i> | <i>Ref.</i> | <i>Part Number</i> | <i>Qty.</i> | <i>Description</i> |
|-------------|--------------------|-------------|------------------------|-------------|--------------------|-------------|--------------------|
| 1 | 119-3351 | 1 | RH Hydro Transaxle ASM | 19 | 121-2971 | 1 | Rod-Bypass, LH |
| 2 | 119-3350 | 1 | LH Hydro Transaxle ASM | 20 | 324-10 | 4 | Screw-HH |
| 4 | 322-11 | 4 | Screw-HH | 21 | 119-3342-03 | 1 | Cross Plate-Hydro |
| 5 | 322-13 | 4 | Screw-HH | 22 | 3234-29 | 4 | Screw-HHF |
| 6 | 104-8300 | 12 | Nut-Flange, NI | 23 | 3290-307 | 2 | Pin-Hair |
| 16 | 119-8908 | 2 | Wheel And Tire ASM | 24 | 121-0752 | 1 | Rod-Bypass, RH |
| 16:1 | 119-8909 | 1 | Tire | 26 | 3296-48 | 6 | Nut-Lock, NI |
| 16:2 | 217-60 | 1 | Rim | 27 | 3256-25 | 6 | Washer-Flat |
| 16:3 | 232-27 | 1 | Stem-Valve | 28 | 324-8 | 2 | Screw-HH |
| 16:99 | 232-37 | 1 | Tube | 29 | 119-8952 | 2 | Washer |
| 17 | 242-50 | 8 | Nut-Lug | 30 | 3256-23 | 6 | Washer-Flat |
| 18 | 117-7264-03 | 2 | Mount-Hydro | | | | |

Left Hand Hydro Transaxle Assembly No. 119-3350



Left Hand Hydro Transaxle Assembly No. 119-3350 (continued)

| <i>Ref.</i> | <i>Part Number</i> | <i>Qty.</i> | <i>Description</i> | <i>Ref.</i> | <i>Part Number</i> | <i>Qty.</i> | <i>Description</i> |
|-------------|--------------------|-------------|-----------------------|-------------|--------------------|-------------|---------------------------|
| 1 | 106-8695 | 1 | Main Housing ASM | 42 | 104-5317 | 1 | Gear-10T/48T |
| 2 | 106-8696 | 1 | Side ASM | 43 | 104-5318 | 1 | Gear-Jackshaft, 10T |
| 4 | 110-8561 | 1 | Pump Block ASM | 44 | 104-5329 | 1 | Pin-Jackshaft |
| 6 | 103-2666 | 1 | Cylinder Block Kit | 46 | 112-9855 | 1 | Gear-52T, Bull |
| 7 | 104-2189 | 1 | Plug-Thread, Straight | 47 | 112-9856 | 1 | Washer |
| 9 | 104-5305 | 16 | Screw-HHF | 48 | 112-9857 | 1 | Bearing-Sleeve |
| 15 | 106-8678 | 1 | Rod-Bypass | 49 | 120-7104 | 1 | Shaft-Axle |
| 19 | 104-5304 | 1 | Swashplate-Trunnion | 50 | 112-9859 | 1 | Bushing-Axle |
| 21 | 104-2116 | 1 | Stud | 52 | 106-8686 | 1 | Seal Kit ● |
| 22 | 112-9853 | 1 | Puck-Friction | 54 | 121-5746 | 1 | Fan Pulley Kit |
| 24 | 114-8491 | 1 | Washer | 55 | 106-8688 | 1 | Brake Arm Kit |
| 27 | 120-5537 | 1 | Spring-Compression | 57 | 112-9861 | 1 | Center Section Filter Kit |
| 28 | 120-5538 | 1 | Washer | 58 | 104-2147 | 1 | Sealant ● |
| 29 | 104-5306 | 1 | Shaft-Input | 59 | 120-5549 | 1 | Bypass Kit |
| 30 | 104-5311 | 1 | Bearing-Ball | 61 | 114-1634 | 1 | Filter Kit |
| 32 | 104-5308 | 1 | Spacer | 100 | 106-8694 | 1 | Disc-Brake, Cog |
| 35 | 94-6922 | 2 | Bearing-Thrust | 138 | 112-9866 | 1 | Breather Kit |
| 36 | 104-5339 | 1 | Washer-Flat | 139 | 114-1635 | 1 | Breather ASM |
| 38 | 104-5316 | 1 | Gear-Pinion, 13T | 150 | 115-5057 | 1 | Cover-Nut, Axle |
| 39 | 106-8683 | 1 | Shaft-Motor | 151 | 120-7109 | 1 | Tube-Axle |
| 40 | 104-5360 | 1 | Washer | 200 | 117-5362 | 1 | Arm Control Kit |
| 41 | 119-5541 | 2 | Washer | 224 | 109-5939 | 1 | Hub Kit |

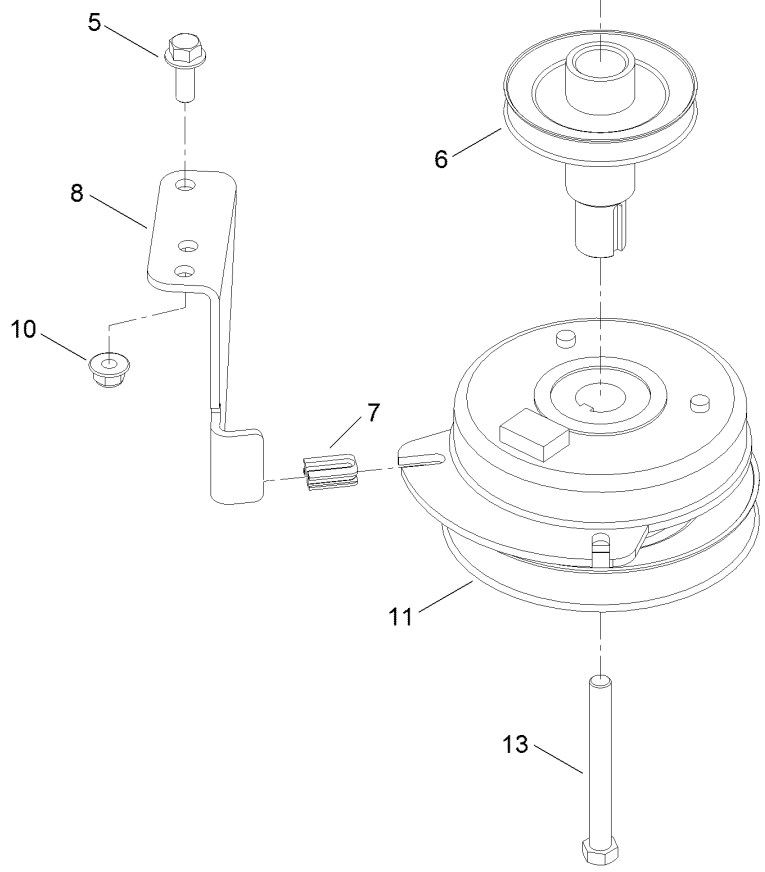
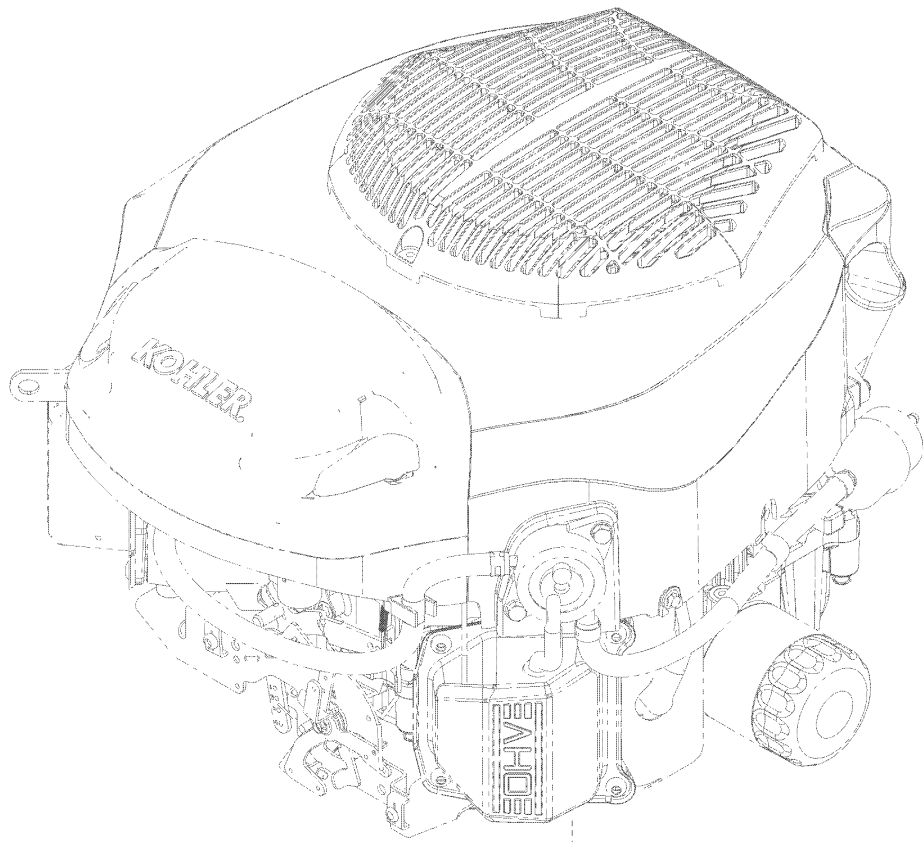
● Not illustrated

Right Hand Hydro Transaxle Assembly No. 119-3351 (continued)

| <i>Ref.</i> | <i>Part Number</i> | <i>Qty.</i> | <i>Description</i> | <i>Ref.</i> | <i>Part Number</i> | <i>Qty.</i> | <i>Description</i> |
|-------------|--------------------|-------------|-----------------------|-------------|--------------------|-------------|---------------------------|
| 1 | 106-8674 | 1 | Main Housing ASM | 42 | 104-5317 | 1 | Gear-10T/48T |
| 2 | 106-8675 | 1 | Side ASM | 43 | 104-5318 | 1 | Gear-Jackshaft, 10T |
| 4 | 110-8561 | 1 | Pump Block ASM | 44 | 104-5329 | 1 | Pin-Jackshaft |
| 6 | 103-2666 | 1 | Cylinder Block Kit | 46 | 112-9855 | 1 | Gear-52T, Bull |
| 7 | 104-2189 | 1 | Plug-Thread, Straight | 47 | 112-9856 | 1 | Washer |
| 9 | 104-5305 | 16 | Screw-HHF | 48 | 112-9857 | 1 | Bearing-Sleeve |
| 15 | 106-8678 | 1 | Rod-Bypass | 49 | 120-7104 | 1 | Shaft-Axle |
| 19 | 104-5304 | 1 | Swashplate-Trunnion | 50 | 112-9859 | 1 | Bushing-Axle |
| 21 | 104-2116 | 1 | Stud | 52 | 106-8686 | 1 | Seal Kit ● |
| 22 | 112-9853 | 1 | Puck-Friction | 54 | 121-5746 | 1 | Fan Pulley Kit |
| 24 | 114-8491 | 1 | Washer | 55 | 106-8688 | 1 | Brake Arm Kit |
| 27 | 120-5537 | 1 | Spring-Compression | 57 | 112-9862 | 1 | Center Section Filter Kit |
| 28 | 120-5538 | 1 | Washer | 58 | 104-2147 | 1 | Sealant ● |
| 29 | 104-5306 | 1 | Shaft-Input | 59 | 107-2489 | 1 | Bypass Arm Kit |
| 30 | 104-5311 | 1 | Bearing-Ball | 61 | 114-1634 | 1 | Filter Kit |
| 32 | 104-5308 | 1 | Spacer | 100 | 106-8694 | 1 | Disc-Brake, Cog |
| 35 | 94-6922 | 2 | Bearing-Thrust | 138 | 112-9866 | 1 | Breather Kit |
| 36 | 104-5339 | 1 | Washer-Flat | 139 | 114-1635 | 1 | Breather ASM |
| 38 | 104-5316 | 1 | Gear-Pinnion, 13T | 150 | 115-5057 | 1 | Cover-Nut, Axle |
| 39 | 106-8683 | 1 | Shaft-Motor | 151 | 120-7109 | 1 | Tube-Axle |
| 40 | 104-5360 | 1 | Washer | 200 | 117-5362 | 1 | Arm Control Kit |
| 41 | 119-5541 | 2 | Washer | 224 | 109-5939 | 1 | Hub Kit |

● Not illustrated

Clutch Assembly



Clutch Assembly (continued)

| <i>Ref.</i> | <i>Part Number</i> | <i>Qty.</i> | <i>Description</i> | <i>Ref.</i> | <i>Part Number</i> | <i>Qty.</i> | <i>Description</i> |
|-------------|--------------------|-------------|--------------------|-------------|--------------------|-------------|--------------------|
| 5 | 3234-42 | 1 | Screw-HHF | 10 | 104-8301 | 1 | Nut-Flange, NI |
| 6 | 119-3318 | 1 | Pulley-Engine | 11 | 127-3408 | 1 | Clutch-PTO |
| 7 | 120-2217 | 1 | Isolator-Clutch | 13 | 3212-17 | 1 | Screw-HH |
| 8 | 119-8885 | 1 | Stop-Clutch | | | | |

Engine and Muffler Assembly (continued)

| <i>Ref.</i> | <i>Part Number</i> | <i>Qty.</i> | <i>Description</i> | <i>Ref.</i> | <i>Part Number</i> | <i>Qty.</i> | <i>Description</i> |
|-------------|--------------------|-------------|--------------------------------|-------------|--------------------|-------------|--------------------|
| 1 | | 1 | Engine Kohler-Kt735-3026 ●■ | 9 | 117-1261 | 1 | Oil Drain Hose ASM |
| 1:1 | 110-6697 | 2 | Gasket-Exhaust | 12 | 3253-4 | 4 | Washer-Lock |
| 1:3 | 281-2 | 1 | Plug-Pipe, SQH | 14 | 32144-109 | 4 | Screw-Taptite |
| 2 | 614249 | 1 | Tie-Cable | 17 | 3256-24 | 3 | Washer-Flat |
| 3 | 3274-10 | 4 | Screw-HSH | 24 | 121-2973-03 | 1 | Shield-Heat |
| 4 | 117-7462 | 1 | Muffler-Kohler | 25 | 46-8560 | 2 | Screw-HHFTF |

● Not serviced separately

■ Obtain parts from www.kohlerplus.com

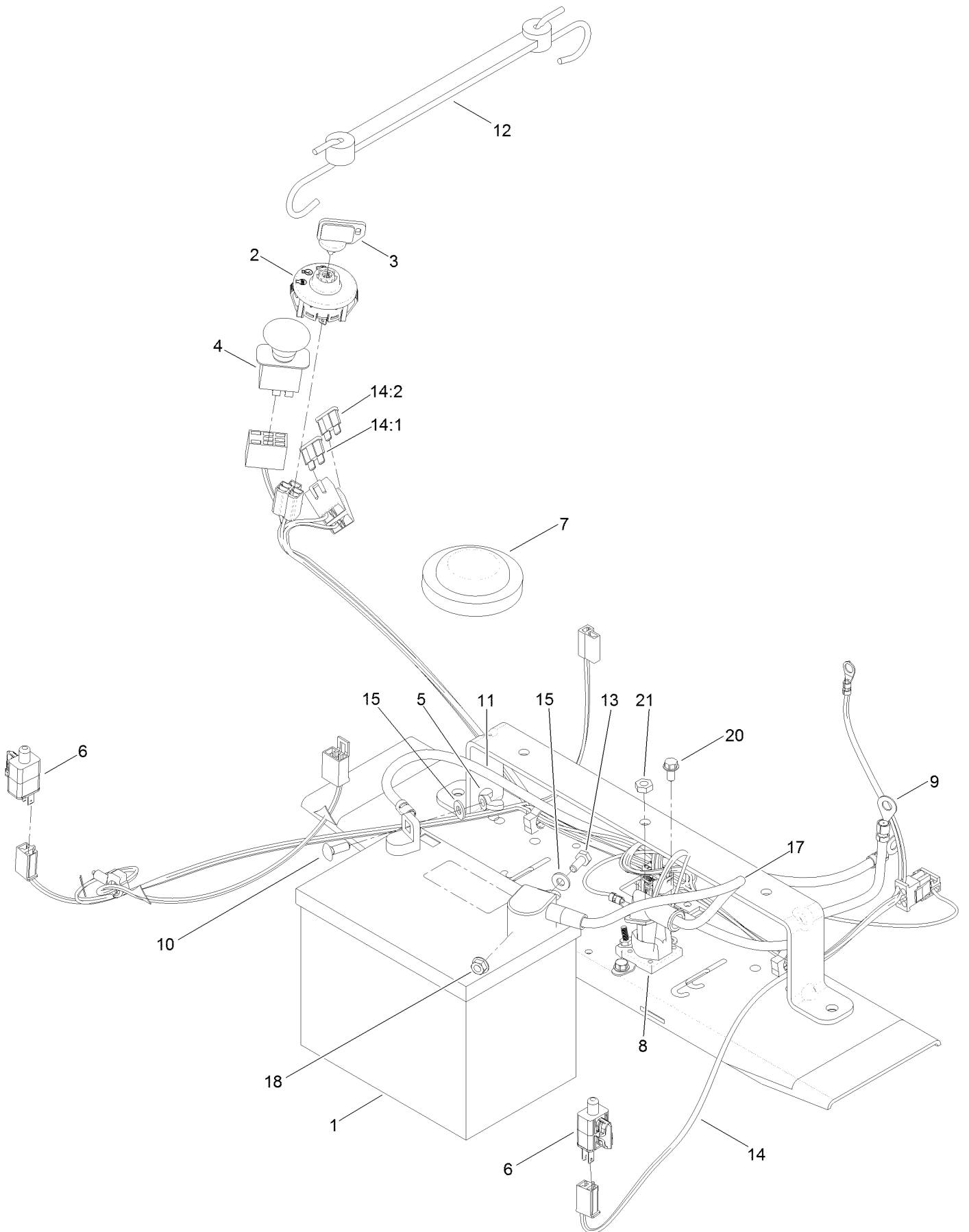
Body Styling and Fuel Pod Assembly (continued)

| <i>Ref.</i> | <i>Part Number</i> | <i>Qty.</i> | <i>Description</i> | <i>Ref.</i> | <i>Part Number</i> | <i>Qty.</i> | <i>Description</i> |
|-------------|--------------------|-------------|-------------------------|-------------|--------------------|-------------|-------------------------|
| 1 | 119-3338 | 1 | Pod-RH | 10 | 120-7950 | 6 | Screw-Shoulder |
| 2 | 119-3337 | 1 | Pod-LH | 11 | 609830 | 2 | Spring |
| 3 | 121-0773 | 1 | Decal-Panel, Control | 12 | 115-9656 | 1 | Cable-Choke |
| 4 | 131-1006 | 1 | Cable-Throttle | 13 | 3253-21 | 1 | Washer-Lock |
| 5 | 3258-166 | 3 | Screw-PRH | 14 | 3220-3 | 1 | Nut-HJ |
| 6 | 107069 | 3 | Clip | 15 | 119-3304-03 | 1 | Guard-Rear |
| 7 | 120-5461 | 1 | Cap-Fuel, Ratcheting | 16 | 99-4693 | 1 | Decal |
| 8 | 119-3377-03 | 1 | Plate-Control | 17 | 119-3395-03 | 1 | Support-Tank, Front |
| 9 | 119-3324 | 1 | Fuel Tank ASM | 18 | 32144-70 | 6 | Screw-HWHTF |
| 9:1 | 121-0793 | 1 | Connector-Elbow, 90 DEG | 19 | 119-8814 | 1 | Decal-Control Lever, LH |
| 9:2 | 46-6560 | 2 | Bushing | 20 | 119-8815 | 1 | Decal-Control Lever, RH |
| 9:4 | 117-7400 | 1 | Fitting-Plastic | | | | |

Fuel Delivery Assembly (continued)

| <i>Ref.</i> | <i>Part Number</i> | <i>Qty.</i> | <i>Description</i> | <i>Ref.</i> | <i>Part Number</i> | <i>Qty.</i> | <i>Description</i> |
|-------------|--------------------|-------------|--------------------|-------------|--------------------|-------------|--------------------|
| 3 | 109-0273 | 1 | Hose-Fuel | 10 | 117-5399 | 1 | Adaptor-Orifice |
| 6 | 108-9698 | 1 | Hose-Fuel | 11 | 110-1876 | 1 | Hose-Fuel |
| 8 | 2412-98 | 3 | Clamp-Hose | 13 | 3334-945 | 2 | Tie-Cable |
| 9 | 614249 | 3 | Tie-Cable | | | | |

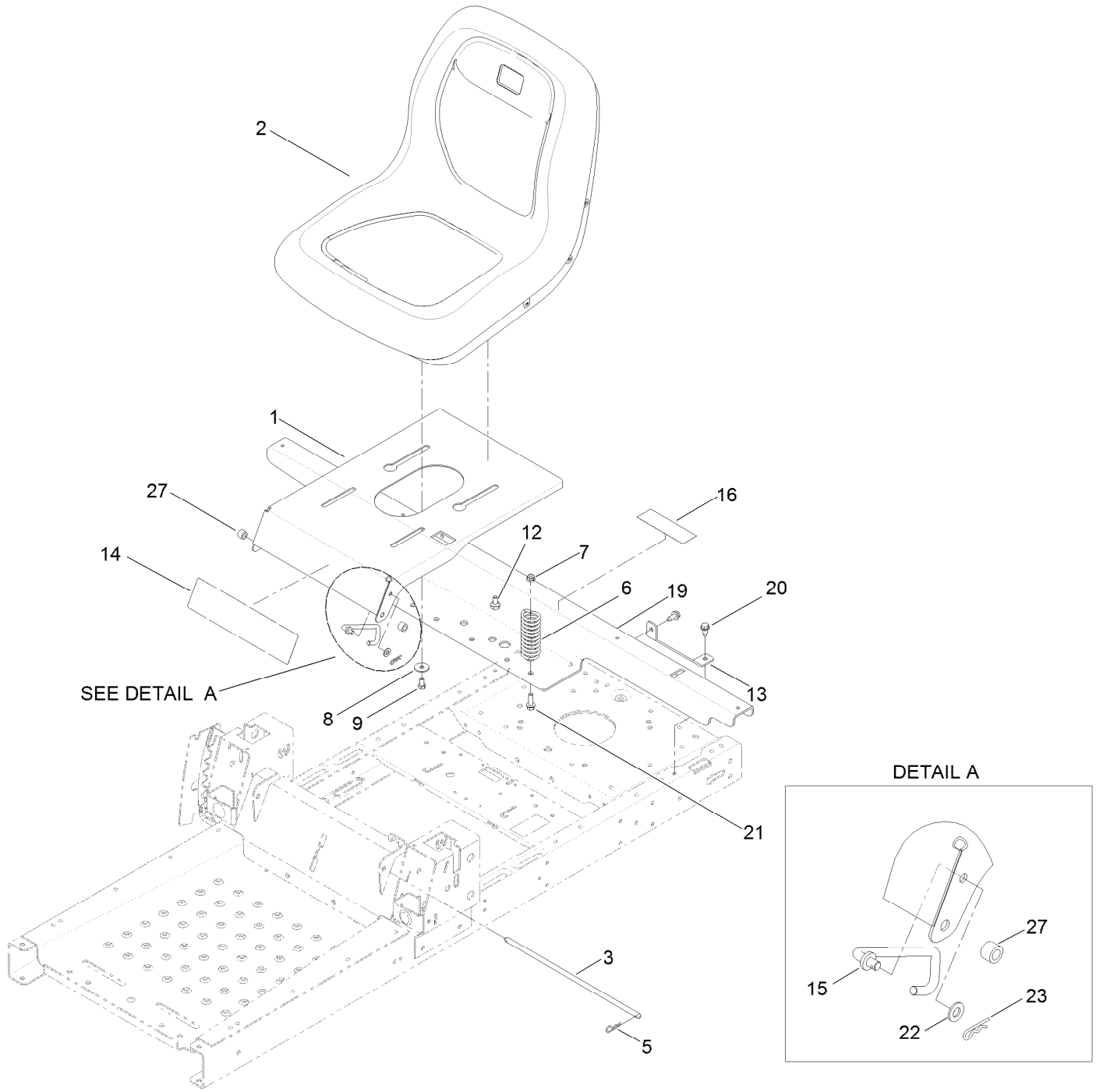
Battery and Electrical Assembly



Battery and Electrical Assembly (continued)

| <i>Ref.</i> | <i>Part Number</i> | <i>Qty.</i> | <i>Description</i> | <i>Ref.</i> | <i>Part Number</i> | <i>Qty.</i> | <i>Description</i> |
|-------------|--------------------|-------------|-------------------------|-------------|--------------------|-------------|--------------------|
| 1 | 105-1692 | 1 | Battery | 12 | 104-2466 | 1 | Holddown-Battery |
| 2 | 117-2221 | 1 | Switch-Ignition | 13 | 321-3 | 1 | Screw-HH |
| 3 | 63-8360 | 1 | Key-Ignition | 14 | 121-5652 | 1 | Harness-Wire |
| 4 | 103-5221 | 1 | Switch-PTO | 14:1 | 109103 | 1 | Fuse-Blade, 30 Amp |
| 5 | 32103-22 | 1 | Nut-Wing | 14:2 | 109102 | 1 | Fuse-Blade, 25 Amp |
| 6 | 110-6765 | 2 | Switch | 15 | 3256-22 | 2 | Washer-Flat |
| 7 | 100-3524 | 1 | Switch-Seat | 17 | 119-8897 | 1 | Cable-Battery, Red |
| 8 | 117-1197 | 1 | Solenoid | 18 | 32128-33 | 2 | Nut-HF |
| 9 | 121-0711 | 1 | Cable-Battery, Positive | 20 | 32144-4 | 2 | Screw-HWH |
| 10 | 3229-1 | 1 | Bolt-CARR | 21 | 3220-2 | 2 | Nut-Jam |
| 11 | 121-5726 | 1 | Cable-Battery, Black | | | | |

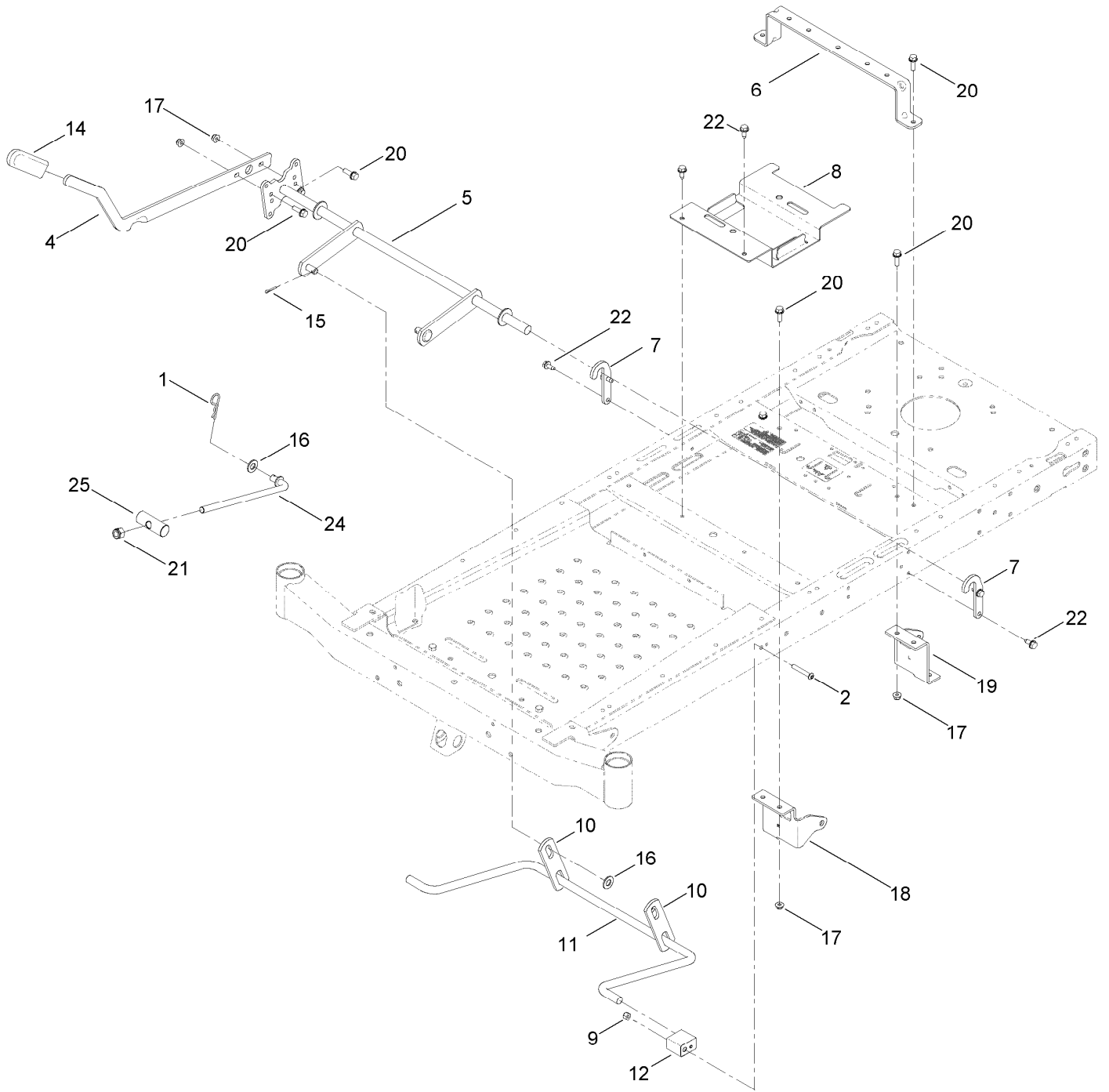
Seat Assembly



Seat Assembly (continued)

| <i>Ref.</i> | <i>Part Number</i> | <i>Qty.</i> | <i>Description</i> | <i>Ref.</i> | <i>Part Number</i> | <i>Qty.</i> | <i>Description</i> |
|-------------|--------------------|-------------|--------------------|-------------|--------------------|-------------|--------------------|
| 1 | 119-3391-01 | 1 | Pan-Seat | 14 | 119-8903 | 1 | Decal-Timecutter |
| 2 | 119-8829 | 1 | Seat-18 Inch | 15 | 119-8972 | 1 | Stop-Seat |
| 3 | 115-4966 | 1 | Rod-Stop | 16 | 106-8717 | 1 | Decal-Service |
| 5 | 3290-250 | 2 | Pin-Hair | 19 | 119-3414-03 | 1 | Support-Pod |
| 6 | 92-7054 | 3 | Spring-Compression | 20 | 32144-70 | 4 | Screw-HWHTF |
| 7 | 104-8300 | 3 | Nut-Flange, NI | 21 | 3234-29 | 3 | Screw-HHF |
| 8 | 5-4460 | 2 | Washer-Pivot | 22 | 3256-23 | 1 | Washer-Flat |
| 9 | 322-2 | 2 | Screw-HH | 23 | 3290-307 | 1 | Pin-Hair |
| 12 | 37-8771 | 2 | Bolt-Shoulder | 27 | 115-4986 | 2 | Spacer |
| 13 | 119-3431-03 | 2 | Support-Tank, Rear | | | | |

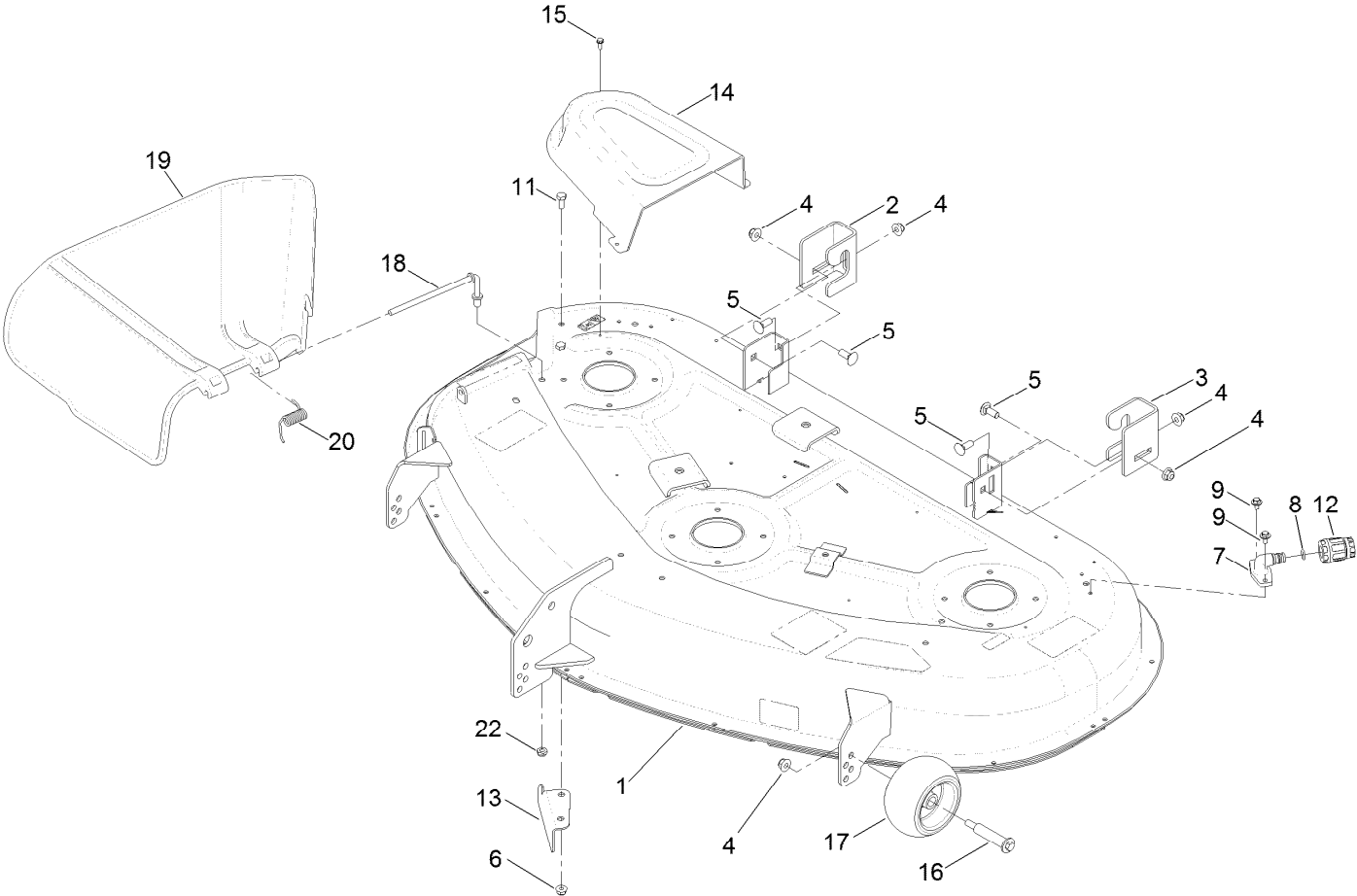
Deck Lift Assembly



Deck Lift Assembly (continued)

| <i>Ref.</i> | <i>Part Number</i> | <i>Qty.</i> | <i>Description</i> | <i>Ref.</i> | <i>Part Number</i> | <i>Qty.</i> | <i>Description</i> |
|-------------|--------------------|-------------|--------------------|-------------|--------------------|-------------|-------------------------|
| 1 | 1-806005 | 1 | Pin-Hair | 14 | 1-633268 | 1 | Grip-Lever |
| 2 | 120-5499 | 2 | Screw-HSBH | 15 | 3272-10 | 2 | Pin-Cotter |
| 4 | 119-3427-03 | 1 | Lever-Lift | 16 | 3256-26 | 3 | Washer-Flat |
| 5 | 119-3424-03 | 1 | Lift-Deck | 17 | 104-8300 | 6 | Nut-Flange, NI |
| 6 | 117-7337-03 | 1 | Brace-Seat, Rear | 18 | 119-8861-01 | 1 | Mount-Hydro, Front (RH) |
| 7 | 119-8875 | 2 | Bracket-Lift | 19 | 119-8862-01 | 1 | Mount-Hydro, Front (LH) |
| 8 | 119-3406-03 | 1 | Bracket-Battery | 20 | 3234-29 | 6 | Screw-HHF |
| 9 | 3296-29 | 2 | Nut-Lock, NI | 21 | 3296-19 | 1 | Nut-Hex |
| 10 | 108-7840 | 2 | Link-Lift | 22 | 32144-70 | 6 | Screw-HWHTF |
| 11 | 119-3347 | 1 | Arm-Lift, Rear | 24 | 104-8047 | 1 | Rod-Trunion |
| 12 | 108-7845 | 2 | Block-Pivot | 25 | 119-8810 | 1 | Pin-Pivot |

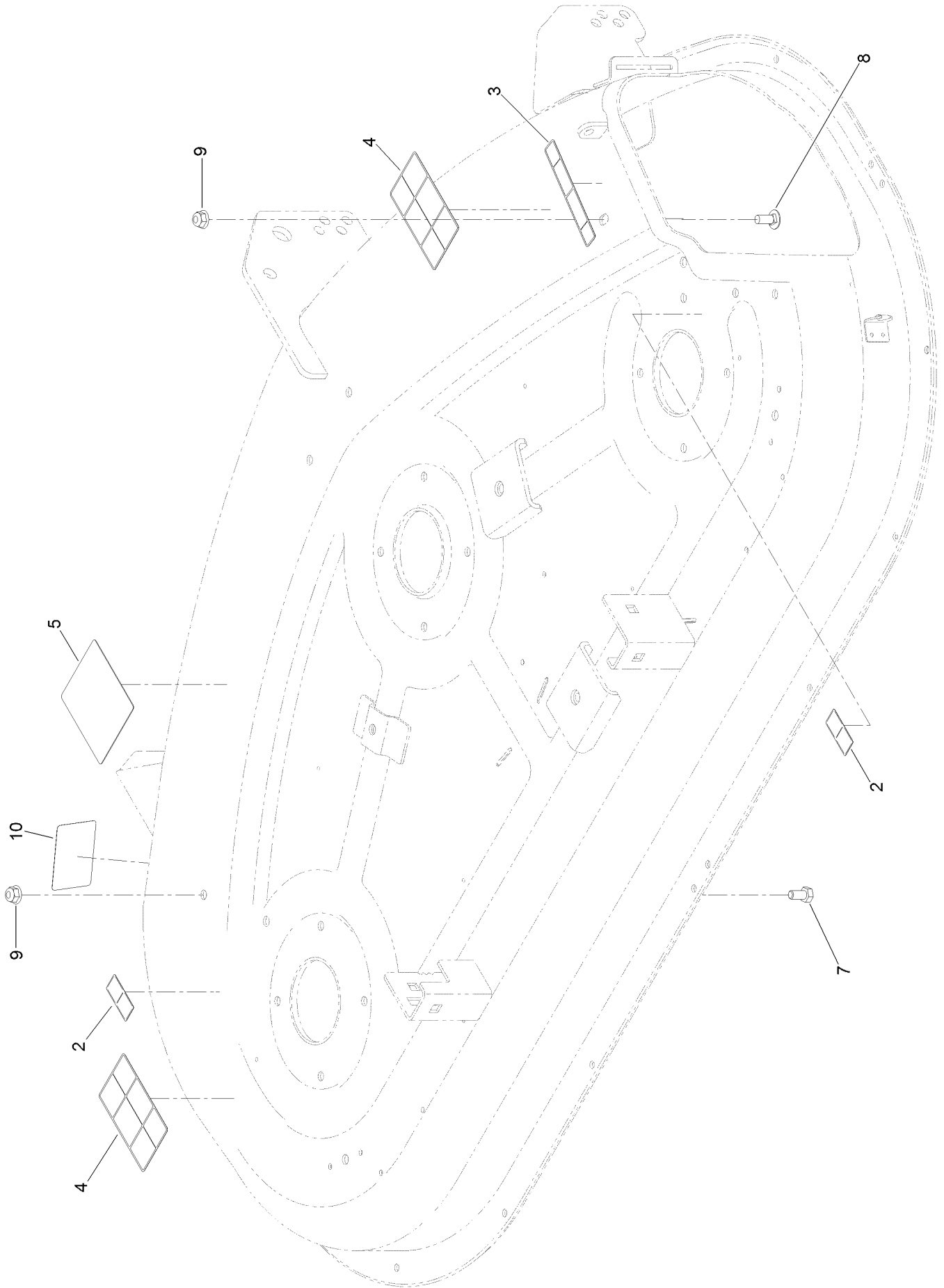
50 Inch Deck Assembly



50 Inch Deck Assembly (continued)

| <i>Ref.</i> | <i>Part Number</i> | <i>Qty.</i> | <i>Description</i> | <i>Ref.</i> | <i>Part Number</i> | <i>Qty.</i> | <i>Description</i> |
|-------------|--------------------|-------------|-------------------------------|-------------|--------------------|-------------|--------------------|
| 1 | 119-8841 | 1 | 50 Inch Deck And Decal ASM | 12 | 95-3270 | 1 | Connector-Hose |
| 2 | 119-3494 | 1 | Bracket-Hanger, RH | 13 | 112-3983-03 | 1 | Baffle-Cutoff |
| 3 | 119-3496 | 1 | Bracket-Hanger, LH | 14 | 108-7890 | 2 | Cover-Belt |
| 4 | 104-8301 | 7 | Nut-Flange, NI | 15 | 32144-1 | 6 | Screw-Taptite |
| 5 | 3231-2 | 4 | Bolt-CARR | 16 | 112-3977 | 3 | Bolt-Shoulder |
| 6 | 104-8300 | 2 | Nut-Flange, NI | 17 | 1-603299 | 3 | Roller-Scalp, Anti |
| 7 | 95-2747 | 2 | Fitting-Washout | 18 | 112-3950 | 1 | Rod-Pivot |
| 8 | 46-6290 | 2 | O-Ring, Seal | 19 | 108-7895 | 1 | Deflector |
| 9 | 46-8560 | 4 | Screw-HHFTF | 20 | 110-6694 | 1 | Spring-Torsion |
| 11 | 322-3 | 2 | Screw-HH | 22 | 3296-59 | 1 | Nut-Lock, NI |

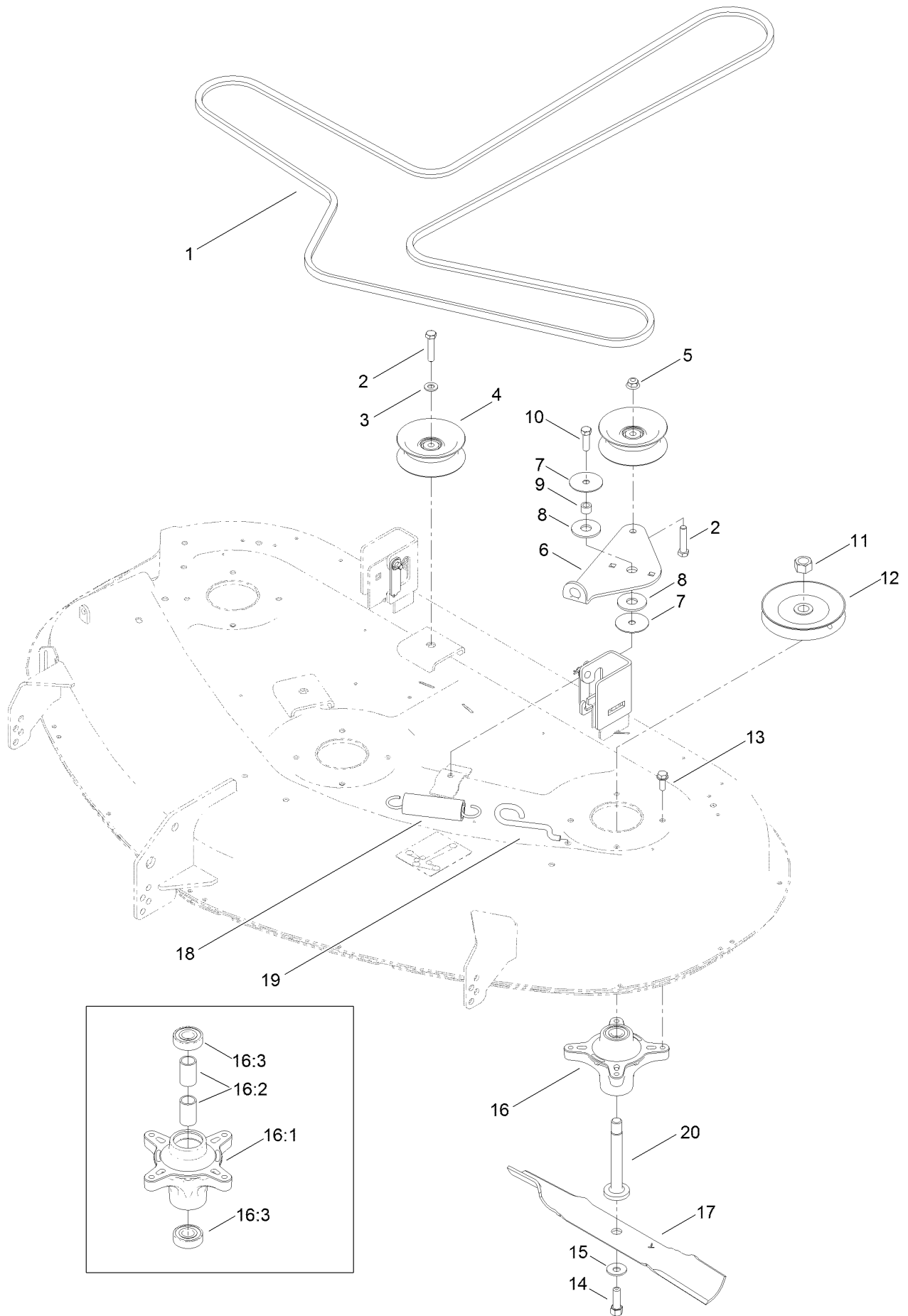
50 Inch Deck Decal Assembly No. 119-8841



50 Inch Deck Decal Assembly No. 119-8841 (continued)

| <i>Ref.</i> | <i>Part Number</i> | <i>Qty.</i> | <i>Description</i> | <i>Ref.</i> | <i>Part Number</i> | <i>Qty.</i> | <i>Description</i> |
|-------------|--------------------|-------------|---------------------|-------------|--------------------|-------------|--------------------|
| 2 | 114-1606 | 2 | Decal-Danger | 7 | 322-2 | 1 | Screw-HH |
| 3 | 93-7009 | 1 | Decal-Danger | 8 | 3230-23 | 1 | Screw-CARR |
| 4 | 110-6691 | 2 | Decal-Danger | 9 | 104-8300 | 2 | Nut-Flange, NI |
| 5 | 99-3943 | 1 | Decal-Routing, Belt | 10 | 112-9840 | 1 | Decal-Scalp, Anti |

50 Inch Deck Belt, Spindle and Blade Assembly



50 Inch Deck Belt, Spindle and Blade Assembly (continued)

| <i>Ref.</i> | <i>Part Number</i> | <i>Qty.</i> | <i>Description</i> | <i>Ref.</i> | <i>Part Number</i> | <i>Qty.</i> | <i>Description</i> |
|-------------|--------------------|-------------|----------------------------|-------------|--------------------|-------------|---------------------------|
| 1 | 119-8820 | 1 | V-Belt | 13 | 32144-41 | 12 | Screw-Taptite |
| 2 | 323-9 | 3 | Screw-HH | 14 | 26-0671 | 3 | Screw-HH |
| 3 | 3256-24 | 2 | Washer-Flat | 15 | 3290-465 | 3 | Washer-Belleville |
| 4 | 106-2175 | 3 | Pulley-Idler, Flat | 16 | 121-0751 | 3 | Spindle ASM |
| 5 | 104-8301 | 1 | Nut-Flange, NI | 16:1 | 117-7267 | 1 | Spindle |
| 6 | 114-8540 | 1 | Arm-Idler | 16:2 | 120-7935 | 2 | Spacer |
| 7 | 120-2229 | 2 | Washer-Idler Pivot | 16:3 | 100-1048 | 2 | Bearing-Ball |
| 8 | 114-0463 | 2 | Washer-Friction, Composite | 17 | 115-5059-03 | 3 | Blade-Hi Lift, 17.50 Inch |
| 9 | 115-4986 | 1 | Spacer | 18 | 1-603414 | 1 | Spring-Extension |
| 10 | 323-7 | 1 | Screw-HH | 19 | 112-3973 | 1 | Hook-Return, Spring |
| 11 | 3219-6 | 3 | Nut-Hex | 20 | 117-7268 | 3 | Shaft-Spindle |
| 12 | 125-5575 | 3 | Pulley | | | | |

Attachments and Accessories

For 74637 TimeCutter SS 5000 Riding Mower

| Product Name | Model/Part |
|--|-------------------|
| Armrest Kit (Milsco) | 105-6978 |
| Deck Ring Kit | 114-1608 |
| Hourmeter Kit, 2011 and After TimeCutter Riding Mower | 120-5498 |
| Striping Kit | 120-7905 |
| Foot Assist Deck Lift Kit, 2011 and After Zero-Turn-Radius Riding Mower | 79010 |
| Sunshade Kit, 2011 and After Zero-Turn-Radius Riding Mower | 79011 |
| Replacement Blade Kit, 2007 and After TimeCutter Riding Mower with 50in Mower | 79016 |
| 50in Recycler Kit, 2007 and After Riding Mower | 79019 |
| Floor Mat Kit, 2011 and After Zero-Turn-Radius Riding Mower with 50in Cutting Unit | 79021 |
| Cargo Carrier | 79030 |
| Front Weight Kit | 79031 |
| Storage Cover | 79317 |
| 50in Bagger, 2011 and After TimeCutter 5000 Series Riding Mower | 79335 |

Notes:



Count on it.