

# Anti-Scalp and Wear Bar Kit

## Zero-Turn-Radius Rear-Discharge Riding Mower

Model No. 127-6650

### Installation Instructions

#### ▲ WARNING

#### CALIFORNIA Proposition 65 Warning

This product contains a chemical or chemicals known to the State of California to cause cancer, birth defects, or reproductive harm.

**Note:** Determine the left and right sides of the machine from the normal operating position.

## Installation

### Loose Parts

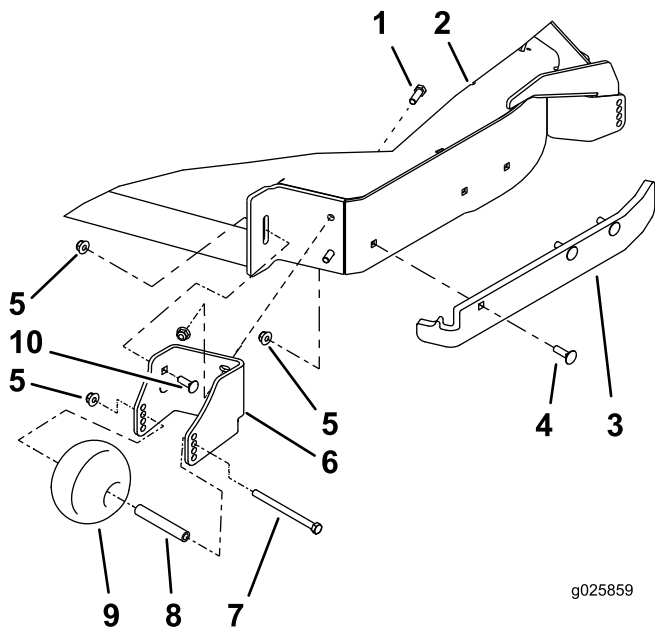
Use the chart below to verify that all parts have been shipped.

Description	Qty.	Use
Left-hand roller bracket	1	Install the wheels.
Right-hand roller bracket	1	
Left-hand bumper	1	
Right-hand bumper	1	
Anti-scalp roller	2	
Spacer	2	
Bolt (3/8 x 5 inches)	2	
Bolt (3/8 x 1-1/8 inches)	4	
Carriage bolt (3/8 x 1-1/8 inches)	4	
Carriage bolt (3/8 x 1-1/4 inches)	6	
Flange nut (3/8 inch)	16	

## Installing the Anti-Scalp Rollers

- Disengage the blade control switch (PTO), move the motion-control levers to the neutral-locked position, and set the parking brake.
- Stop the engine, remove the key, and wait for all moving parts to stop before leaving the operating position.
- Raise the mower deck to the transport position.
- Remove the existing plastic bumpers from the left and right sides of the mower deck. Retain all components for future installation.
- Loosely, install the left-hand and right-hand roller brackets to the front of the deck with 4 bolts (3/8 x 1-1/8 inches), 4 carriage bolts (3/8 x 1-1/8 inches), and 8 flange nuts (3/8 inch). See Figure 1 for the correct location for the bolts.
- Install the left-hand and right-hand bumpers to the side of the deck with 6 carriage bolts (3/8 x 1-1/4 inches) and 6 flange nuts (3/8 inch) (Figure 1).





g025859

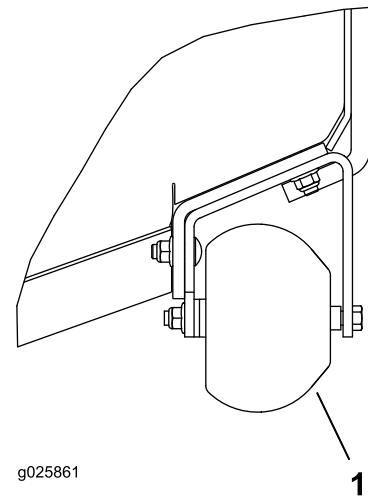
**Figure 1**

Left side shown

- |                                       |  |
|---------------------------------------|--|
| 1. Bolt (3/8 x 1-1/8 inches)          | 6. Left-hand roller bracket            |
| 2. Left side of the mower deck        | 7. Bolt (3/8 x 5 inches)               |
| 3. Left-hand bumper                   | 8. Spacer                              |
| 4. Carriage bolt (3/8 x 1-1/4 inches) | 9. Anti-scalp roller                   |
| 5. Flange nut (3/8 inch)              | 10. Carriage bolt (3/8 x 1-1/8 inches) |

**Note:** Install the rollers with the taper to the outside of the mower deck (Figure 2).

7. Tighten the anti-scalp roller bracket hardware.
8. Install the spacers into the rollers (Figure 1).
9. Install the rollers into the brackets with 2 bolts (3/8 x 5 inches) and 2 flange nuts (3/8 inch) to match the desired height-of-cut (Figure 1 and Figure 2).



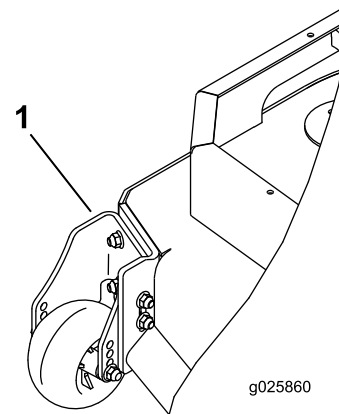
g025861

**Figure 2**

Left side shown

1. Install the rollers with the taper to the outside of the mower deck

10. Torque the bolts for the rollers to 41-47 N-m (30-35 ft-lb).



g025860

**Figure 3**

1. Right side installed

# Operation

## Adjusting the Anti-Scalp Rollers

Whenever you change the height-of-cut, it is recommended to adjust the height of the anti-scalp rollers.

1. Disengage the blade control switch (PTO), move the motion-control levers to the neutral-locked position, and set the parking brake.
2. Stop the engine, remove the key, and wait for all moving parts to stop before leaving the operating position.
3. Adjust the anti-scalp rollers to match the closest height-of-cut position (Figure 4).

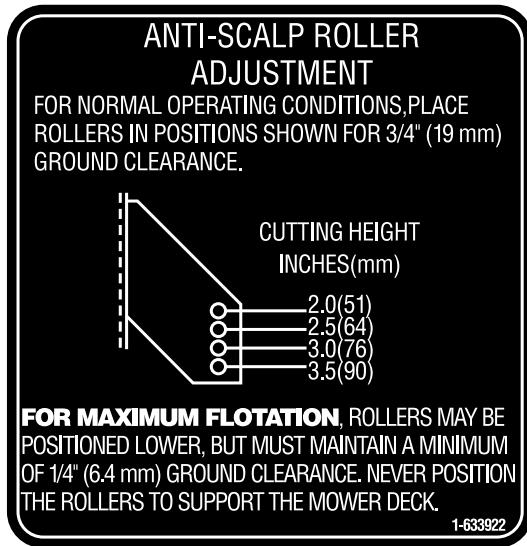


Figure 4

**Note:** For cutting heights above 3.5 inches (90 mm), use the bottom hole. The rollers will still be effective against scalping.

**Notes:**