



**Count on it.**

**Parts Catalog**

**ProPass 200 Top Dresser  
with Twin Spinner**

Model No. 44701—Serial No. 310001001 and Up



# Ordering Replacement Parts

To order replacement parts, please supply the part number, the quantity, and the description of each part desired.

## Understanding Reference Numbers

Each identified part in an illustration has a reference number. The reference number for a part also appears in the parts list, along with other information about the part.

This catalog uses two special reference number formats, one to indicate parts in a service assembly and another to indicate the quantity of a given part in an illustration.

## Service Assembly Reference Numbers

Parts in service assemblies have reference numbers in the form a:b. The a represents the reference number of the entire service assembly and the b represents a sequential number unique to each part within the service assembly.

For example, a wheel assembly might be identified by reference number 6, the tire by 6:1, the valve by 6:2, and the wheel by 6:3. When you order the assembly identified by reference number 6, you receive all parts identified by reference numbers 6:1, 6:2, and 6:3. However, you may also order any part individually. Reference numbers of this type appear in illustration and in parts lists.

## Reference Numbers Indicating Quantity

In an illustration, if a reference number indicates more than one part, the reference number has the form nX y. The n represents the quantity of the part, the X is the multiplication symbol, and the y represents the reference number.

For example, in an illustration, the reference number 2X 37 means that two of the parts identified by reference number 37 are indicated.

# List of Abbreviations

**AR:** as required

**ASM:** assembly

**BBC:** blade brake control

**BHTF:** button head thread forming

**CARR:** carriage

**CCW:** counter clockwise

**CW:** clockwise

**DEG:** degrees

**DPA:** Dual Point Adjustment

**ECM:** electronic control module

**EXT:** external

**FH:** flat head

**GA:** gauge

**HD:** heavy-duty

**HF:** hex flange

**HH:** hex head

**HHF:** hex head flange

**HHFTF:** hex head flange thread forming

**HJ:** hex jam

**HLH:** hex lag head

**HOC:** height-of-cut

**HSBH:** hex socket button head

**HSFH:** hex socket flat head

**HSH:** hex socket head

**HWH:** hex washer head

**HWHTF:** hex washer head thread forming

**HYD:** hydraulic

**LH:** left hand

**LP:** Liquefied Petroleum Gas

**LPG:** Liquefied Petroleum Gas

**NI:** nylon insert

**NPTF:** national pipe thread fine

**PFH:** phillips flat head

**PPH:** phillips pan head

**PPHTF:** phillips pan head thread forming

**PRH:** phillips round head

**PTH:** phillips truss head

**PTO:** power-take-off

**RH:** right hand

**ROPS:** roll-over protection system

**RRB:** rear roller brush

**SFH:** slotted fillister head

**SHH:** slotted hex head

**SHWH:** slotted hex washer head

**SPH:** slotted pan head

**SQH:** square head

**SRH:** slotted round head

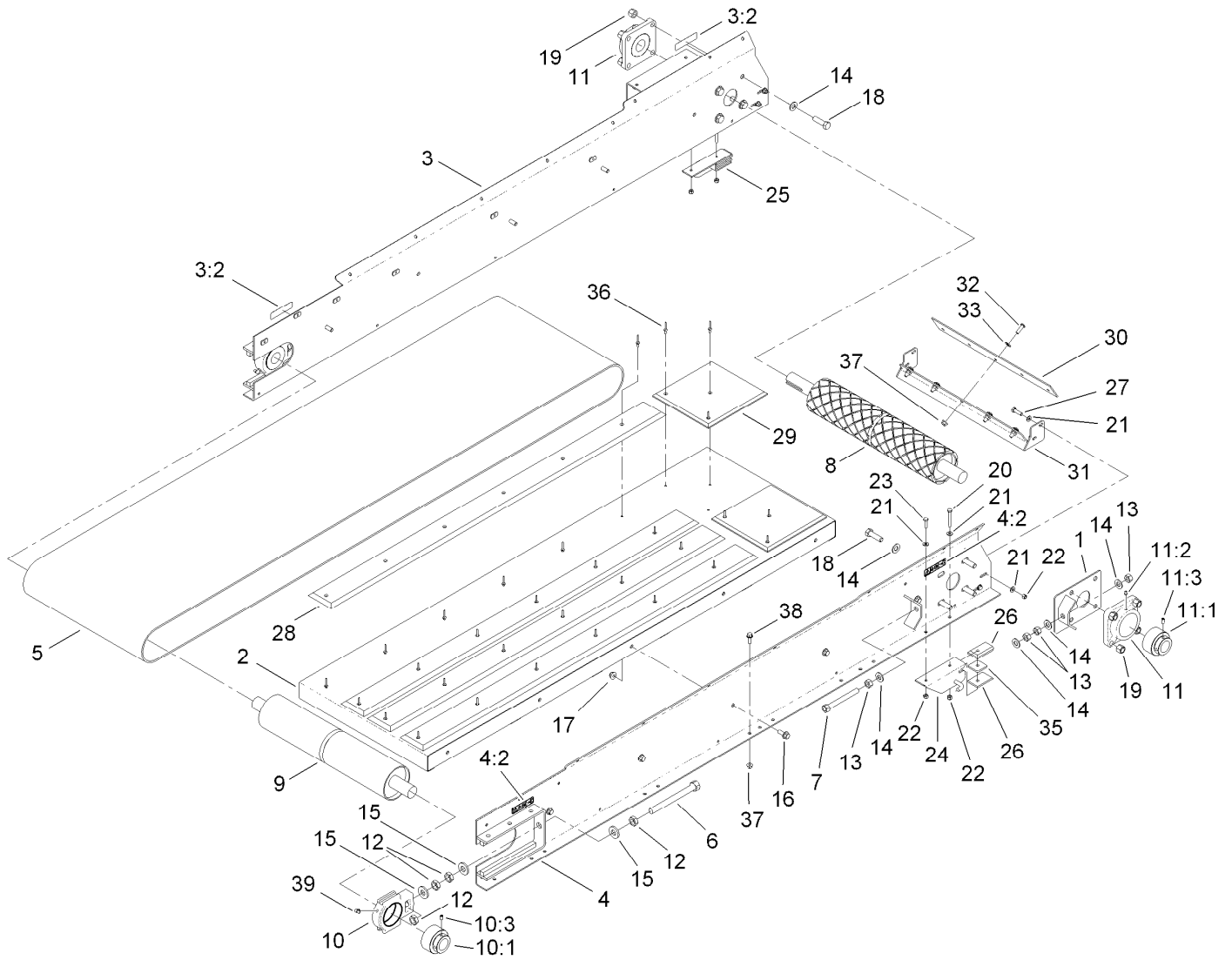
**STD:** standard

**TAP:** self tapping

**TTH:** torx truss head

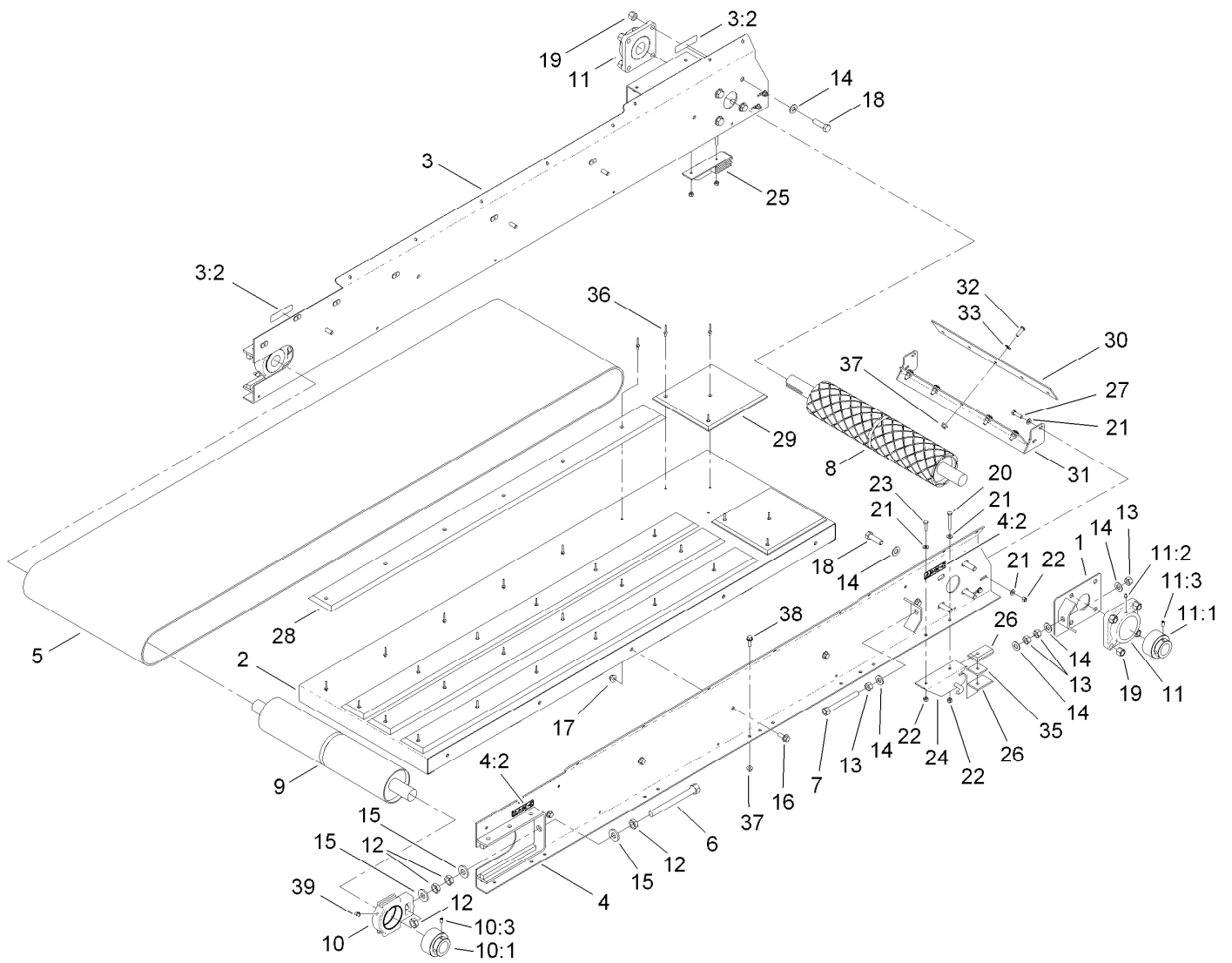
# Contents

Bed Assembly .....	4
Bed Cover Assembly .....	6
Belt Drive Assembly .....	7
Hopper Assembly .....	8
Tailgate Assembly .....	9
Hydraulic System Assembly .....	10
Electrical Assembly .....	12
Twin Spinner Assembly .....	13
Hydraulic Motor Assembly No. T0001-9863 .....	15
Twin Spinner Hydraulic Assembly .....	16
Attachments and Accessories .....	17



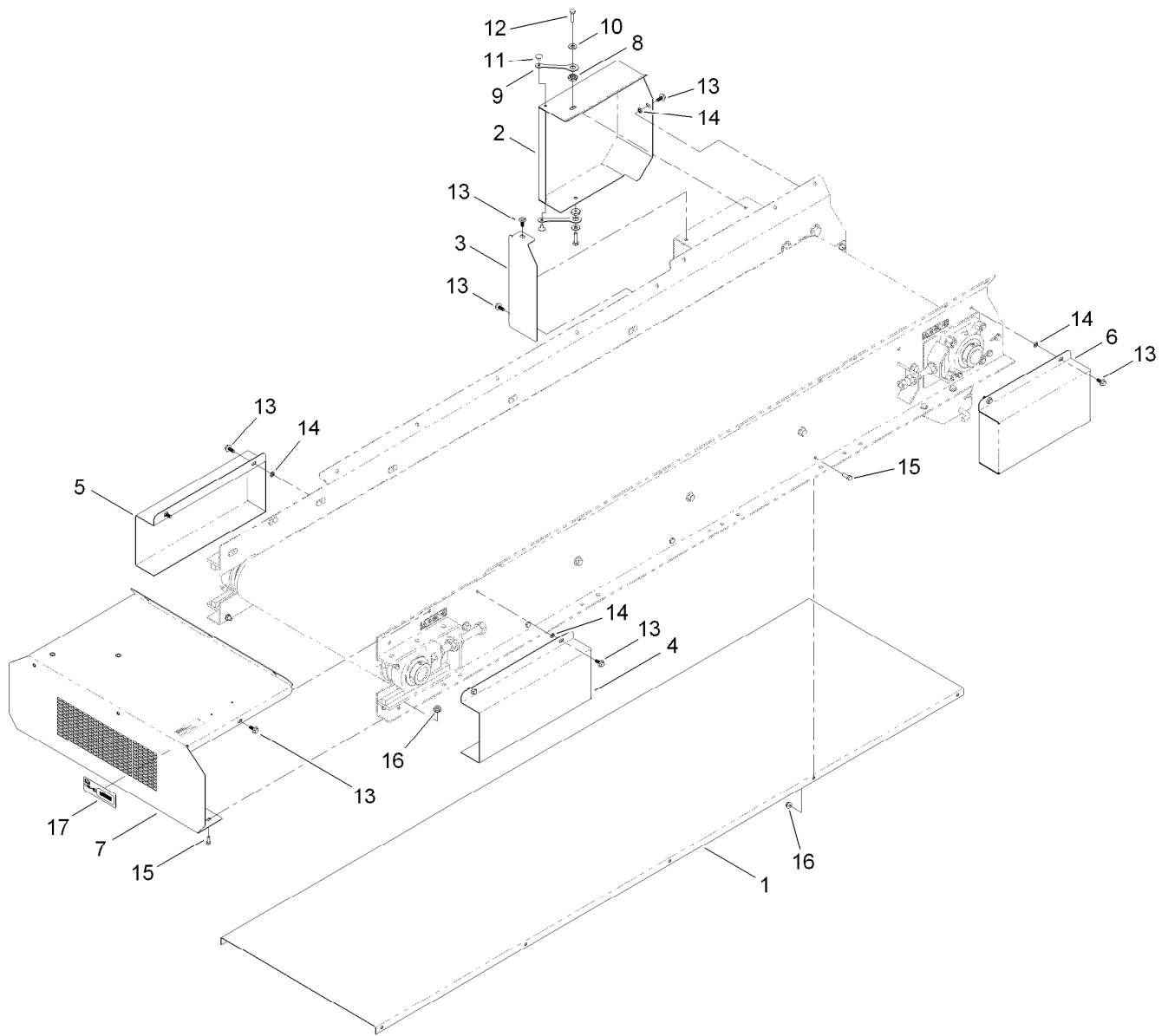
## Bed Assembly

Ref.	Part Number	Qty.	Description	Ref.	Part Number	Qty.	Description
1	T36051675-01	1	Alignment Plate ASM	15	99-7667	6	Washer-Flat
2	T36051600-01	1	Conveyor Bed ASM	16	3234-42	10	Screw-HHF
3	119-6797	1	Right Conveyor Side ASM	17	104-8301	10	Nut-Flange, NI
3:2	119-0217	2	Decal-Danger	18	325-7	8	Screw-HH
4	119-6796	1	Left Conveyor ASM	19	3296-23	8	Nut-Lock, NI
4:2	119-0217	2	Decal-Danger	20	321-11	2	Screw-HH
5	T60191015	1	Belt-Conveyor	21	3256-22	12	Washer-Flat
6	T36051670-01	2	Tensioner Rod ASM	22	3296-42	8	Nut-Lock, NI
7	T36051660-01	1	Alignment Rod ASM	23	321-6	2	Screw-HH
8	T36051610	1	Roller-Drive	24	T36051560-01	1	Left Attachment ASM
9	T36051620	1	Roller-Idler	25	T36051570-01	1	Right Attachment ASM
10	T60114107	2	Take-Up Bearing ASM	26	T36051580	4	Bar-Bearing
10:1	119-6902	1	Bearing-Collar Lock	27	321-4	4	Screw-HH
10:3	3246-17	1	Setscrew-HSH	28	T36051690	4	Slider-Belt
11	T60116255	2	4-Bolt Bearing ASM	29	T36051680	2	Slider-Belt, Rear
11:1	119-6902	1	Bearing-Collar Lock	30	T36051135	1	Plate-Scraper
11:2	302-19	1	Fitting-Grease	31	T36051132-01	1	Scraper ASM
11:3	3246-17	1	Setscrew-HSH	32	119-6903	5	Screw-HSBH
12	3220-6	8	Nut-Jam	33	107-0279	5	Washer
13	3217-9	4	Nut-HH	35	T0000-2189	2	Spacer-Attachment
14	3256-26	12	Washer-Flat	36	3269-4	30	Rivet-Pop



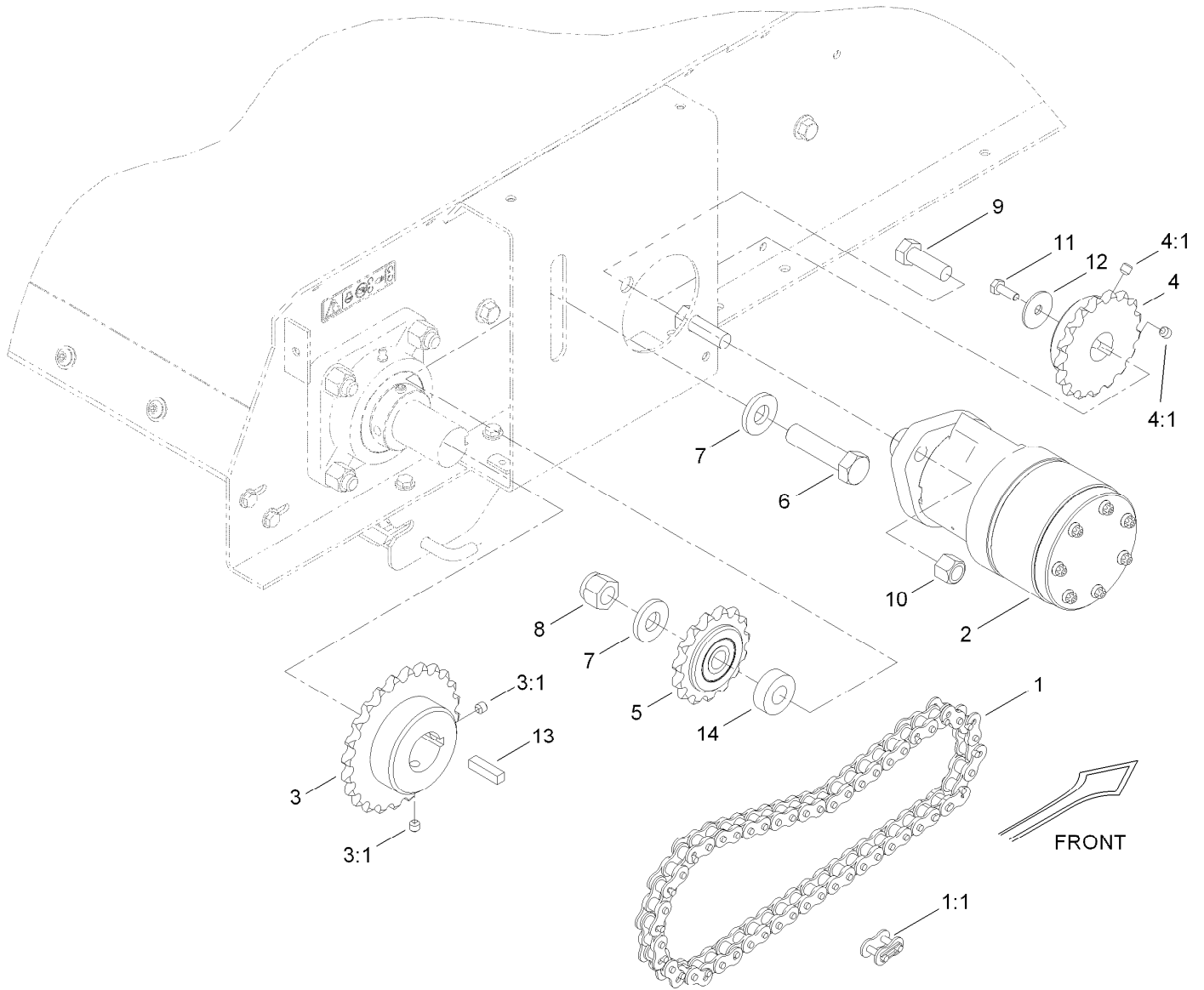
## Bed Assembly (continued)

<i>Ref.</i>	<i>Part Number</i>	<i>Qty.</i>	<i>Description</i>	<i>Ref.</i>	<i>Part Number</i>	<i>Qty.</i>	<i>Description</i>
37	104-8300	15	Nut-Flange, NI	38	3234-29	10	Screw-HHF
				39	302-60	2	Fitting-Grease



## Bed Cover Assembly

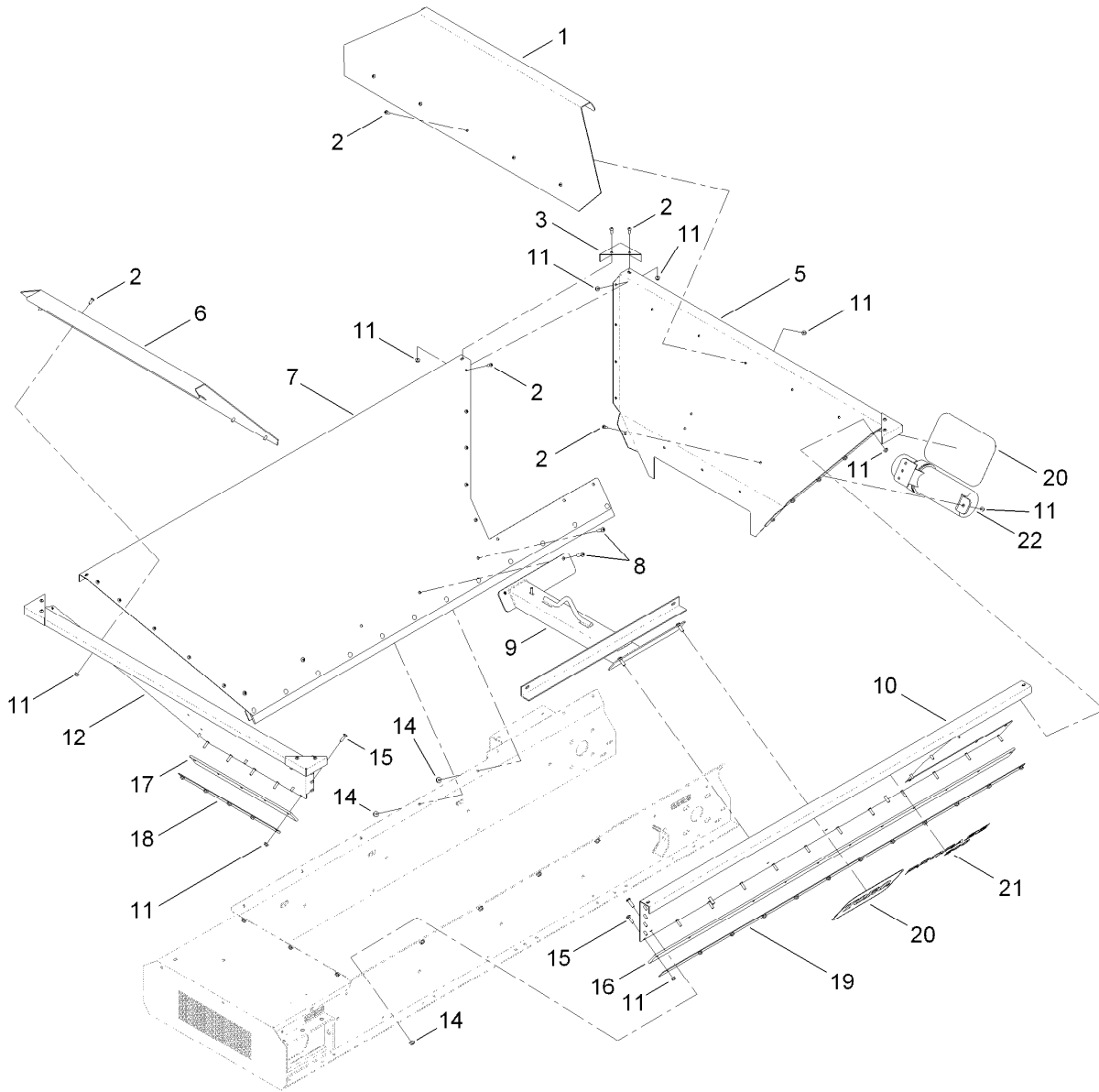
<i>Ref.</i>	<i>Part Number</i>	<i>Qty.</i>	<i>Description</i>	<i>Ref.</i>	<i>Part Number</i>	<i>Qty.</i>	<i>Description</i>
1	T36051704	1	Guard-Bottom	10	3256-2	2	Washer-Flat
2	T36051640-03	1	Guard-Drive, RH	11	146489	2	Rivet
3	T36051645-01	1	Cap-Guard	12	321-6	2	Screw-HH
4	T36051630-03	1	Guard-Idler, LH	13	99-6810	11	Screw-HHF
5	T36051635-03	1	Guard-Idler, RH	14	106-8737	7	Nut-Retainer
6	T36051650-03	1	Guard-Drive, LH	15	321-4	12	Screw-HH
7	T0000-7789-01	1	Guard-Rinse, Front	16	104-7201	12	Nut-HF
8	119-0851	2	Nut-Shoulder	17	119-6809	1	Decal-Propass, Clean Out
9	117-8339	2	Lanyard-3 Inch				



## Belt Drive Assembly

Ref.	Part Number	Qty.	Description
1	T36051800	1	Chain-Drive, #50
1:1	T60151066	1	Link-Connector, #50
2	T56011000	1	HYD Motor ASM
3	T60133052	1	Sprocket
3:1	3246-2	2	Screw-Set, HSH
4	T60133080	1	Sprocket
4:1	3246-2	2	Screw-Set, HSH
5	T60134080	1	Sprocket-Idler
6	327-8	1	Screw-HH

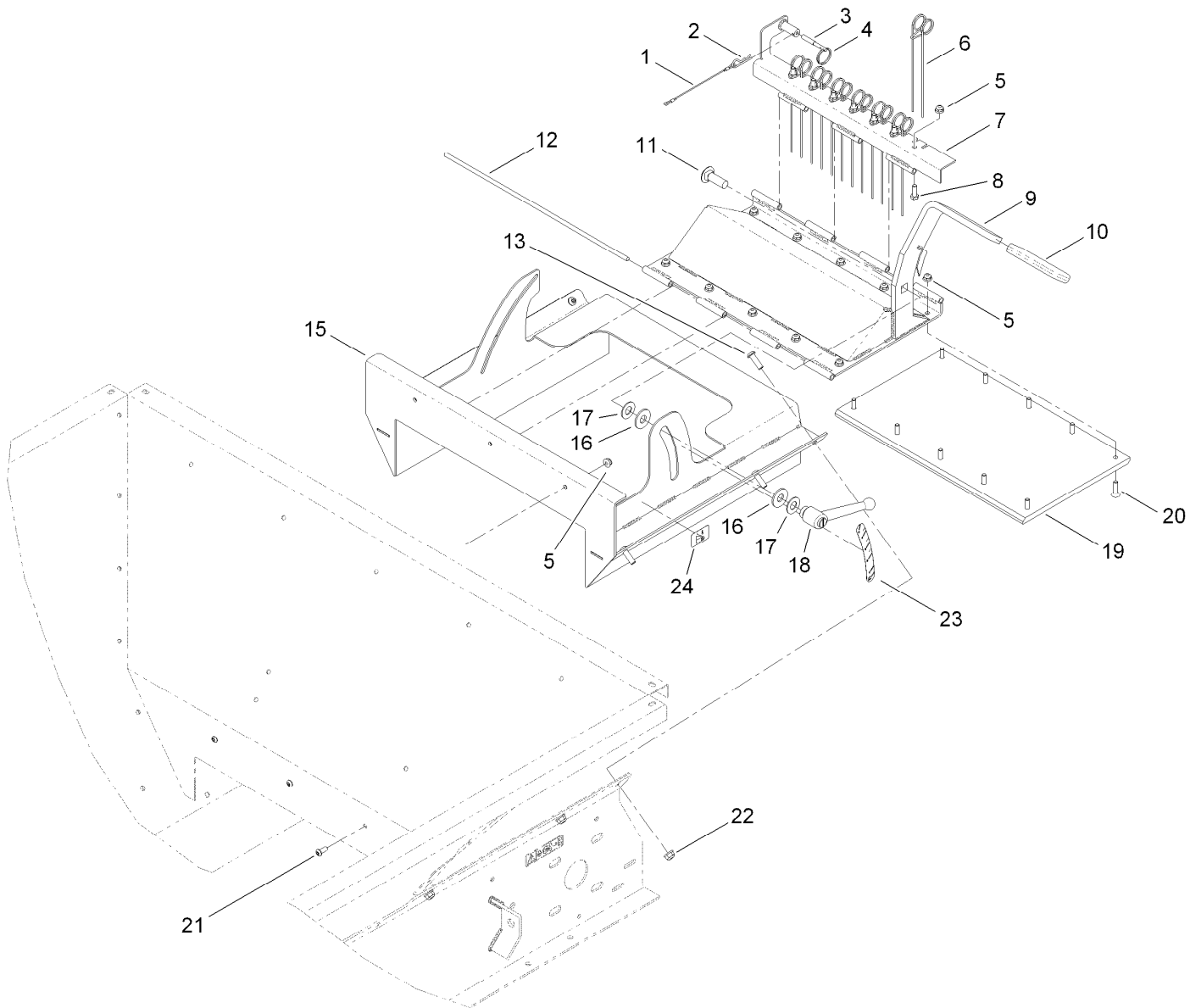
Ref.	Part Number	Qty.	Description
7	99-7667	2	Washer-Flat
8	3296-53	1	Nut-Lock, NI
9	325-6	2	Screw-HH
10	3296-23	2	Nut-Lock, NI
11	321-4	1	Screw-HH
12	3256-57	1	Washer-Flat
13	T36051810	1	Key-Drive
14	119-6905	1	Spacer



## Hopper Assembly

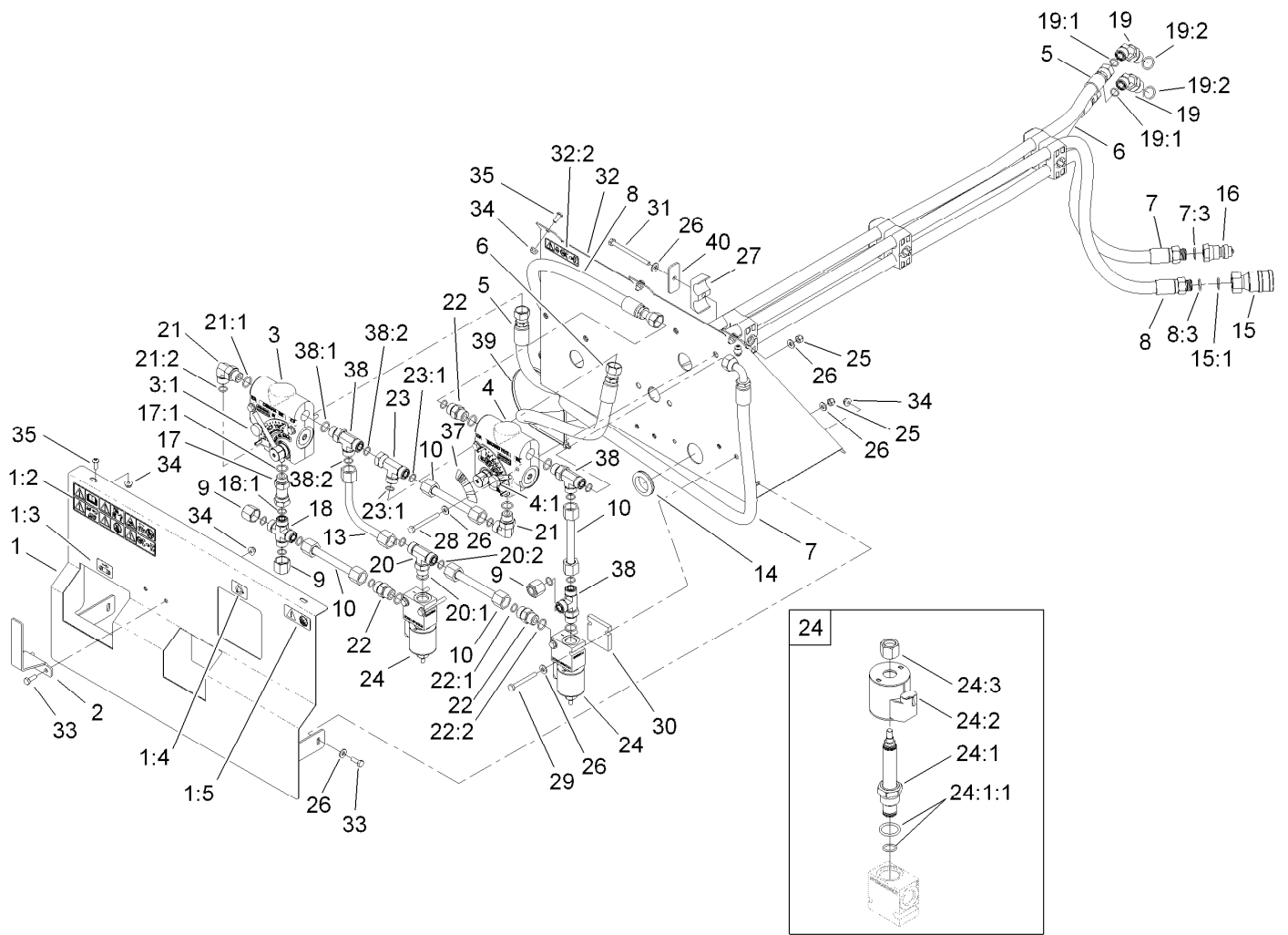
<i>Ref.</i>	<i>Part Number</i>	<i>Qty.</i>	<i>Description</i>	<i>Ref.</i>	<i>Part Number</i>	<i>Qty.</i>	<i>Description</i>
1	T0001-2184-01	1	Extension-Hopper, Rear	12	T36051102-01	1	Wall-Hopper, Front
2	119-6906	49	Screw-HSBH	14	104-8300	10	Nut-Flange, NI
3	T36051116-01	4	Cap-Corner	15	3229-2	29	Screw-CARR
5	T0000-7799-01	1	Wall-Hopper, Rear	16	T01-34550B	2	Skirt-Conveyor, Rubber
6	T0001-1626-01	1	Extension-Hopper, Front	17	T01-34551B	1	Rubber-Seal, Front
7	T36051112-01	1	Wall-Hopper, Right	18	T36051140-01	1	Retainer-Skirt, Front
8	119-6903	10	Screw-HSBH	19	T36051540-01	2	Retainer-Skirt, Conveyor
9	T01-44788D-03	1	Lift ASM	20	66-6140	3	Decal
10	T36051108-01	1	Wall-Hopper, Left	21	119-6800	2	Decal-Propass 200
11	104-7201	78	Nut-HF	22	T0004-1839	1	Canister-Manual





## Tailgate Assembly

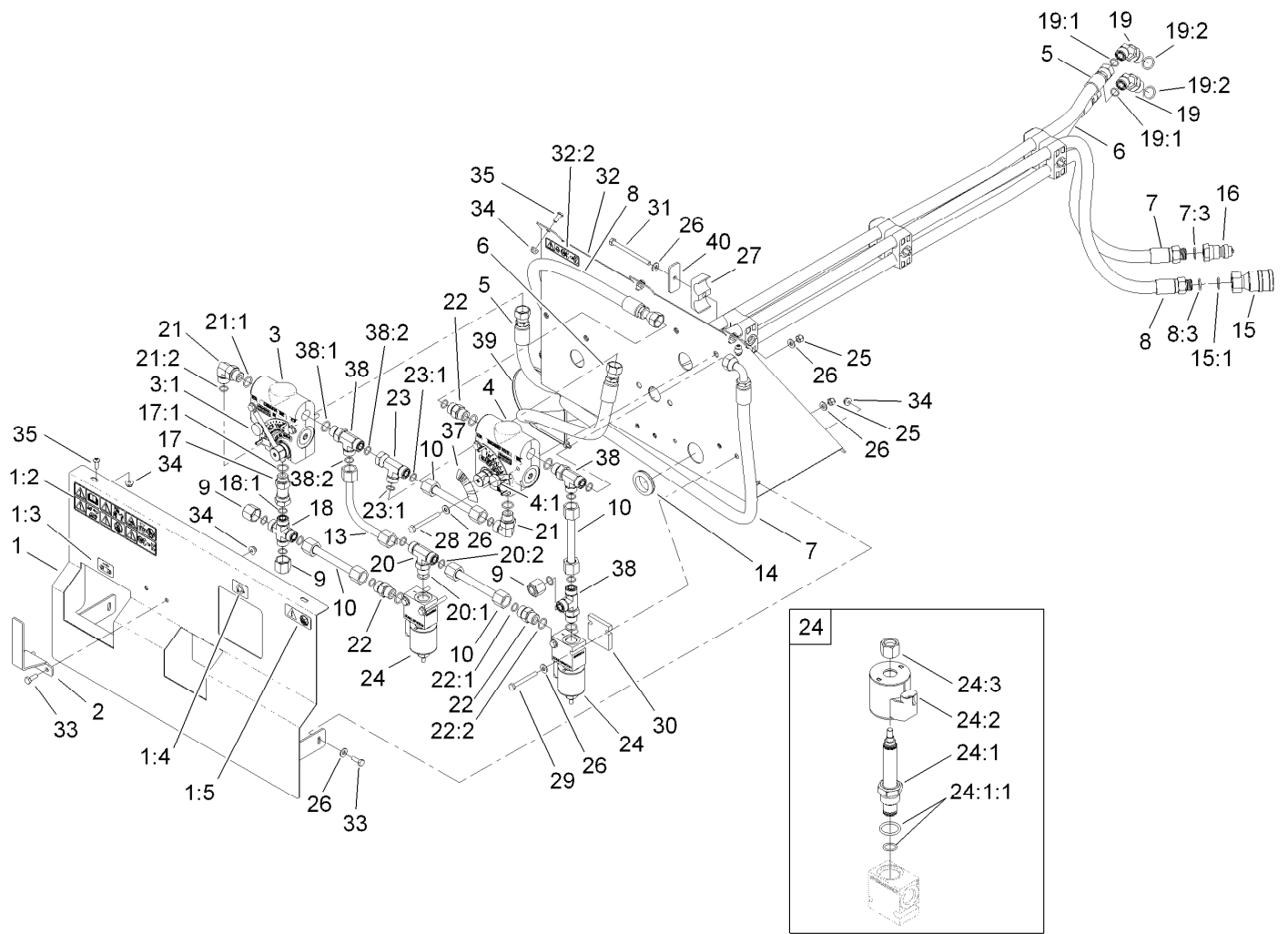
<i>Ref.</i>	<i>Part Number</i>	<i>Qty.</i>	<i>Description</i>	<i>Ref.</i>	<i>Part Number</i>	<i>Qty.</i>	<i>Description</i>
1	28-8070	1	Lanyard	13	119-6903	6	Screw-HSBH
2	3290-467	1	Pin-Hair	15	T0000-2561-01	1	Frame-Gate
3	T0001-6926	1	Pin-Tailgate	16	T0000-2623	2	Washer-Poly, Ultra High Molecular Weight
4	106-1392	1	Ring-Retaining, Spiral (EXT)	17	110-6894	2	Washer-Pivot
5	104-7201	20	Nut-HF	18	T0002-0682	1	Handle-Adjustable
6	T0000-2597	7	Tine-Gate	19	T36051127	1	Pad-Wear, Gate
7	T0000-2588-01	1	Gate Tine ASM	20	3290-141	10	Screw-HSFH
8	321-4	7	Screw-HH	21	119-6906	3	Screw-HSBH
9	T0000-2564-01	1	Gate	22	104-8300	6	Nut-Flange, NI
10	T62021000	1	Grip-Handle	23	119-6808	1	Decal-Propass, Volume
11	3233-2	1	Screw-CARR	24	119-6818	1	Decal-Tail Gate
12	T0000-2585	2	Rod-Hinge				



## Hydraulic System Assembly

Ref.	Part Number	Qty.	Description	Ref.	Part Number	Qty.	Description
1	119-6792	1	Hydraulic Guard ASM	13	119-6939	1	HYD Tube ASM
1:2	119-6806	1	Decal-Danger	14	240-3	1	Grommet-Rubber
1:3	119-6854	1	Decal-Speed, Conveyor	15	98-4699	1	Female-Disconnect, Quick
1:4	119-6853	1	Decal-Speed, Attachment	15:1	100-4165	1	Seal Kit
1:5	115-2047	1	Decal-Surface, Hot	16	98-4698	1	Male-Disconnect, Quick
2	T36053030-01	1	Hanger-Hose	17	100-7671	1	Adapter-HYD
3	119-6942	1	HYD Valve Control ASM	17:1	237-79	1	O-Ring
3:1	119-6944	1	Handle	18	100-7670	1	Adapter-HYD
4	119-6941	1	HYD Valve Control ASM	18:1	237-30	4	O-Ring
4:1	119-6944	1	Handle	19	340-89	2	Fitting-HYD, 45 DEG
5	119-6923	1	HYD Hose ASM	19:1	237-30	1	O-Ring
6	119-6924	1	HYD Hose ASM	19:2	237-80	1	O-Ring
7	119-6935	1	HYD Hose ASM	20	340-157	1	Fitting-HYD, Tee
7:3	237-79	1	O-Ring	20:1	237-79	1	O-Ring
8	119-6934	1	HYD Hose ASM	20:2	237-30	2	O-Ring
8:3	237-79	1	O-Ring	21	340-98	2	Fitting-HYD, 90 DEG
9	340-152	3	Cap-HYD	21:1	237-79	1	O-Ring
10	119-6936	4	HYD Tube ASM	21:2	237-30	1	O-Ring

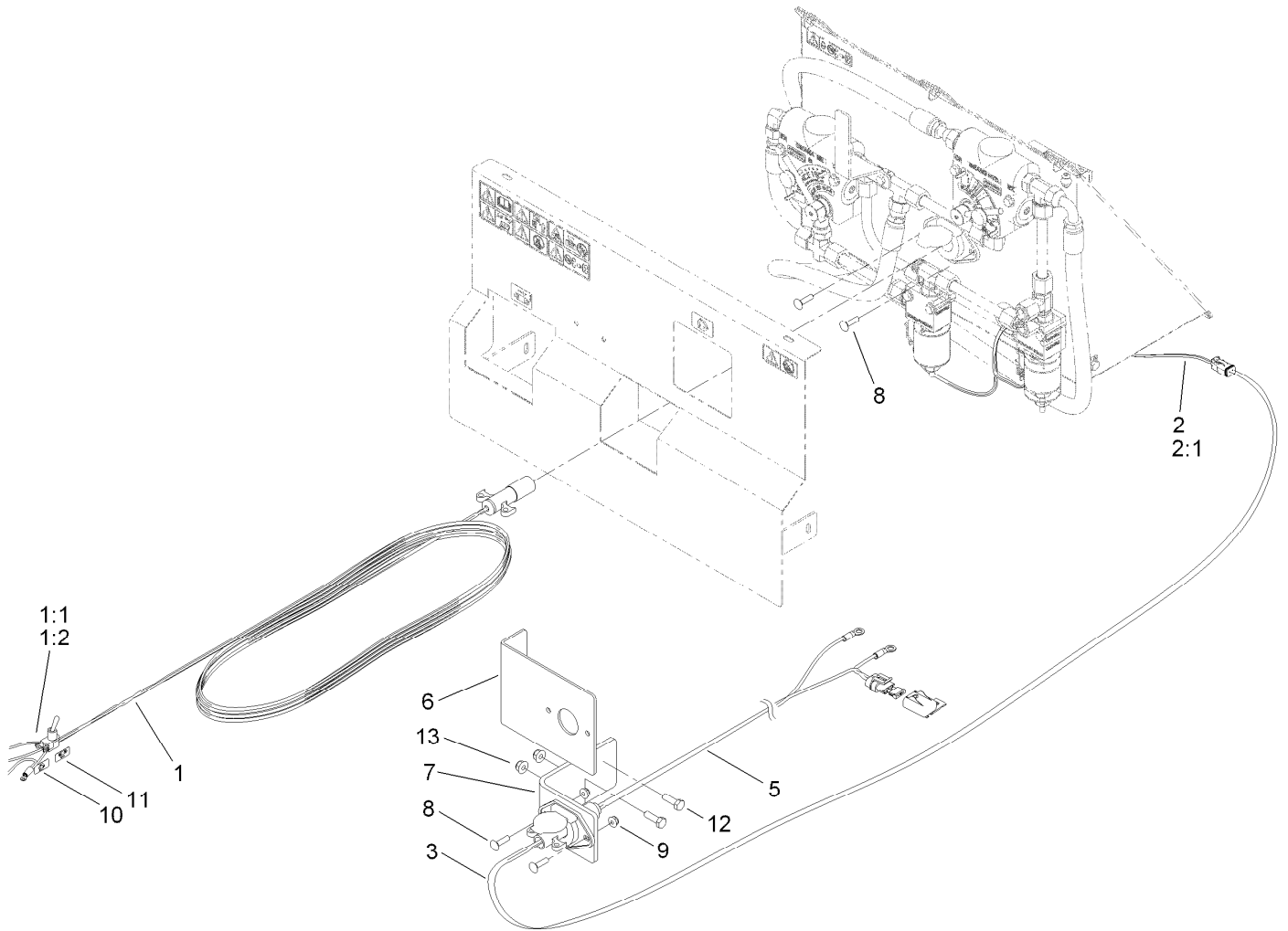
● Not illustrated



## Hydraulic System Assembly (continued)

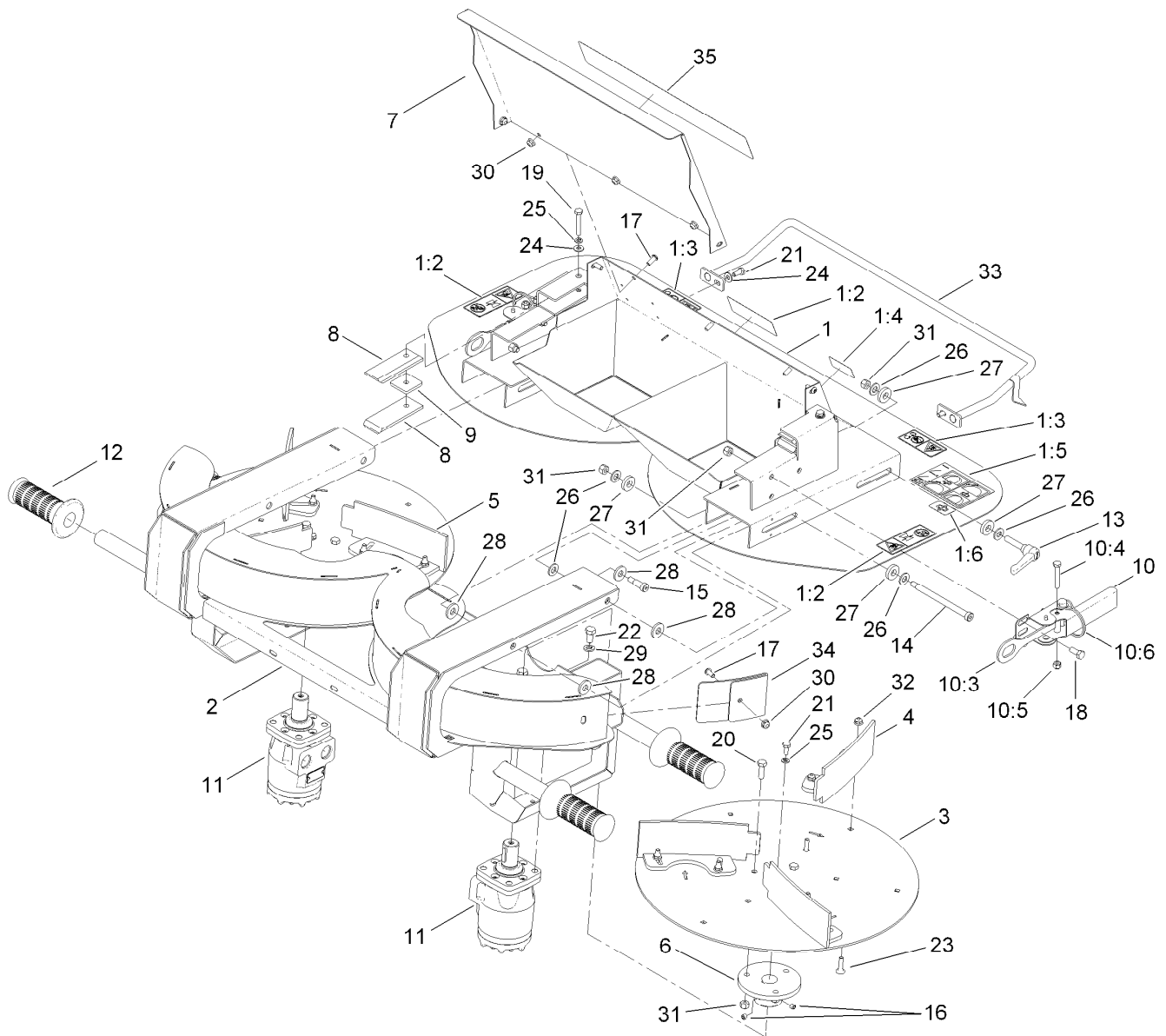
Ref.	Part Number	Qty.	Description	Ref.	Part Number	Qty.	Description
22	340-4	3	Fitting-HYD, Straight	29	321-18	4	Screw-HH
22:1	237-30	1	O-Ring	30	T36053010	2	Spacer-Valve
22:2	237-79	1	O-Ring	31	321-19	3	Screw-HH
23	340-104	1	Tee-Fitting	32	119-6794	1	Mount-Panel, HYD Valve
23:1	237-30	2	O-Ring	32:2	119-0217	1	Decal-Danger
24	T56054023	2	Solenoid Valve ASM	33	321-4	4	Screw-HH
24:1	105-9158	1	Valve-Solenoid, N.O.	34	104-7201	11	Nut-HF
24:1:1	105-9159	1	Seal Kit ●	35	119-6906	7	Screw-HSBH
24:2	110-6344	1	Coil-12V, Dc	37	119-6820	1	Decal-Spinner, Speed
24:3	110-2635	1	Nut-Coil	38	340-109	3	Fitting-HYD, Tee
25	3296-42	8	Nut-Lock, NI	38:1	237-79	1	O-Ring
26	3256-22	18	Washer-Flat	38:2	237-30	2	O-Ring
27	56-7974	12	Clamp-Tube	39	3290-379	1	Tie-Cable
28	321-15	4	Screw-HH	40	T36033040	3	Plate-Clamp

● Not illustrated



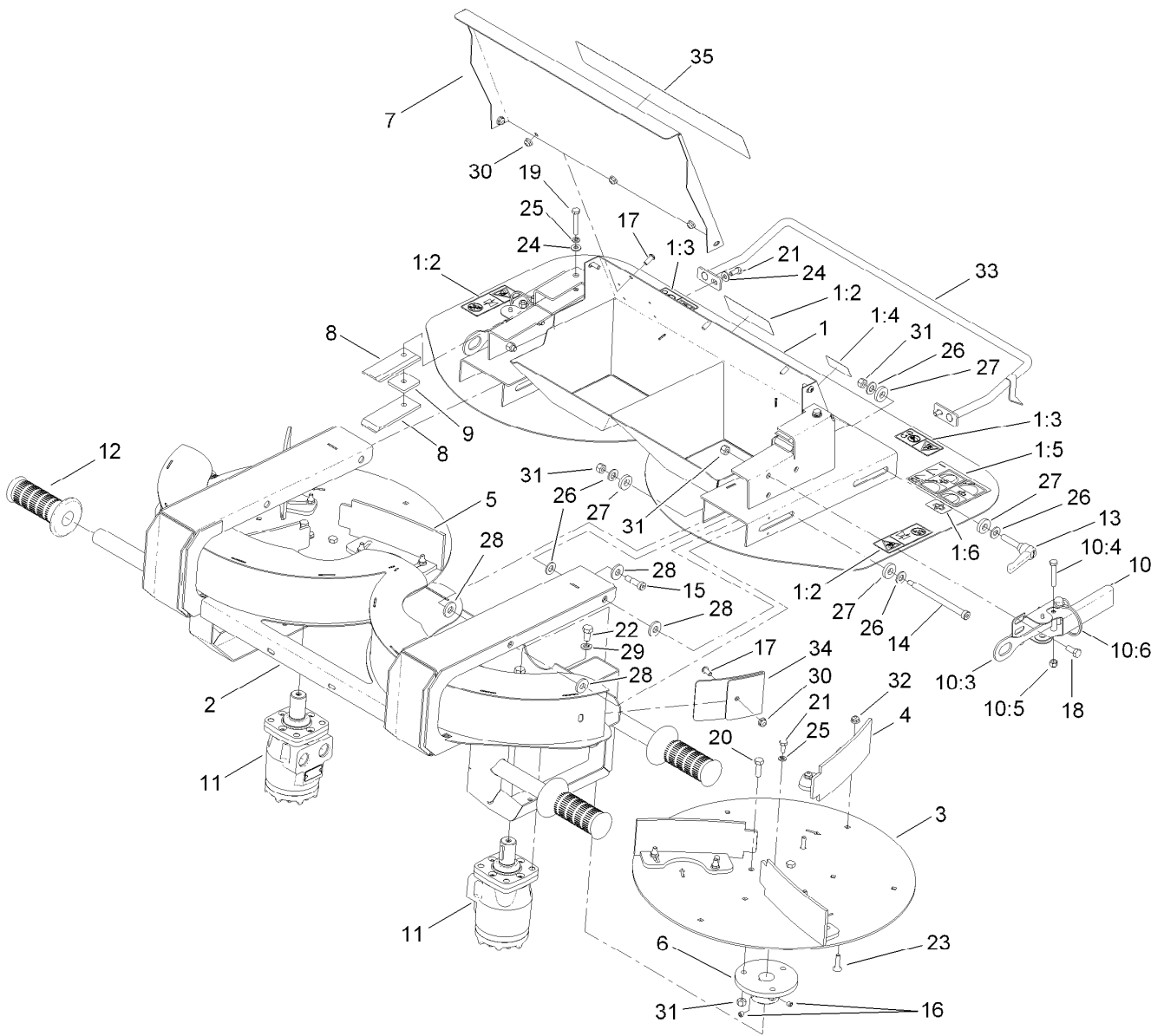
## Electrical Assembly

Ref.	Part Number	Qty.	Description
1	119-6948	1	Pendant ASM
1:1	119-7551	1	Switch-Toggle, 2-Way
1:2	119-7553	1	Switch-Toggle
2	119-6949	1	Harness-Wire, Main Valve
2:1	109355	1	Fuse-Blade, 15 Amp
3	119-6911	1	Harness-Wire, Intermediate Power
5	119-6910	1	Harness-Wire, Universal Power Lead
6	T36054020	1	Bracket-Socket
7	T36054030	1	Bracket-Socket, Heavy
8	3229-2	4	Screw-CARR
9	104-7201	4	Nut-HF
10	119-6855	1	Decal-Attachment Speed
11	119-6856	1	Decal-Conveyor Speed
12	322-5	2	Screw-HH
13	104-8300	2	Nut-Flange, NI



## Twin Spinner Assembly

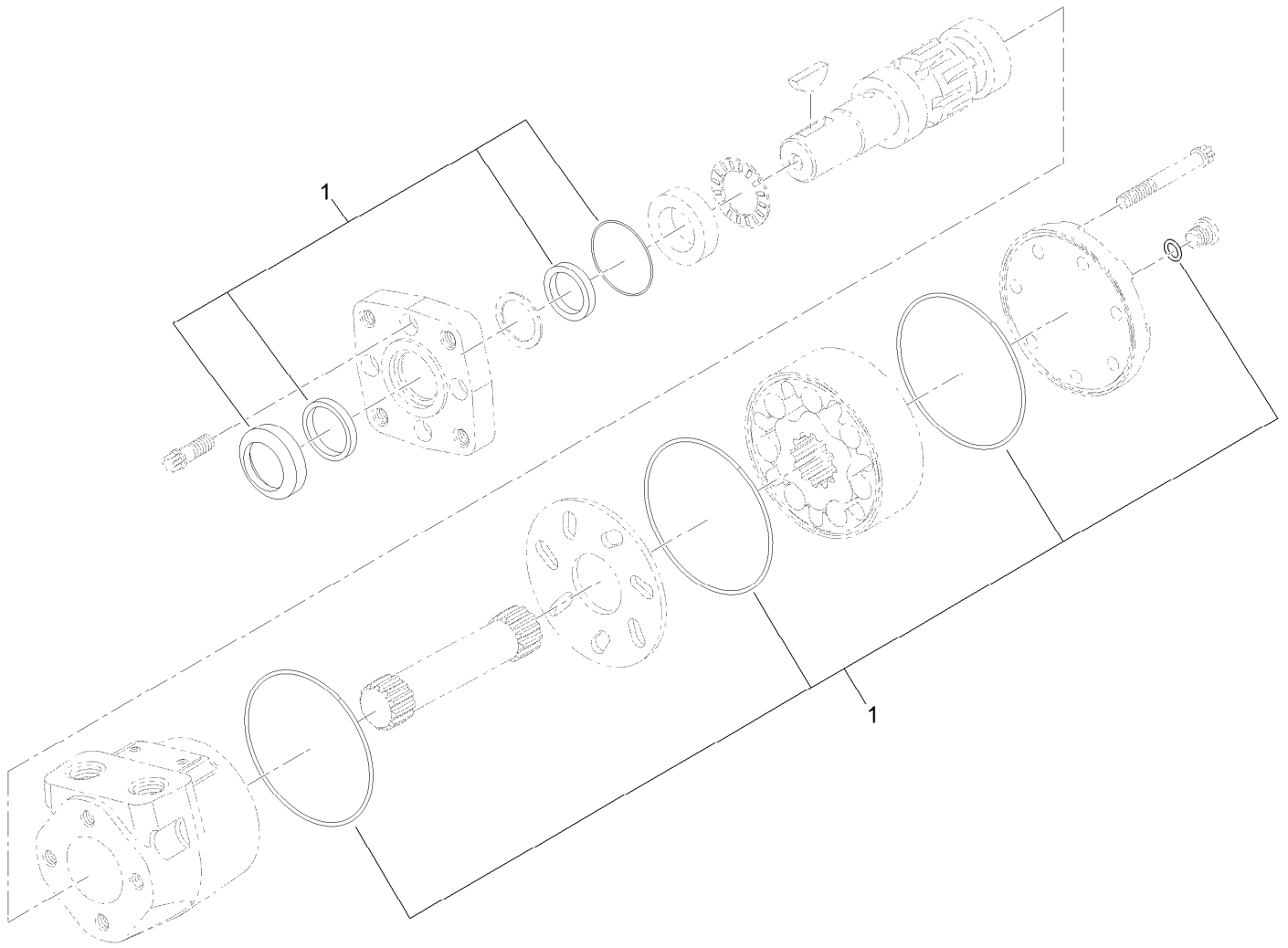
Ref.	Part Number	Qty.	Description	Ref.	Part Number	Qty.	Description
1	119-6793	1	Top Plate ASM	12	T62021010	4	Grip-Vinyl, Black
1:2	119-6804	3	Decal-Warning, Bystanders	13	T0000-2676	2	Handle-Adjustable
1:3	119-6805	2	Decal-Warning, Moving Parts	14	119-6914	2	Screw-Shoulder, HSH
1:4	119-6810	1	Decal-Propass, Lift	15	119-6915	2	Screw-Shoulder, HSH
1:5	119-6817	1	Decal-Fine Tuning	16	3246-2	4	Screw-Set, HSH
1:6	119-6816	1	Decal-Adjustment, Slide	17	119-6906	7	Screw-HSBH
2	T36054605-01	1	Spinner Frame ASM	18	322-3	6	Screw-HH
3	T36054790-01	2	Disk-Spinner	19	321-10	2	Screw-HH
4	T0001-2003-01	3	Left Curved Paddle ASM	20	322-5	6	Screw-HH
5	T0001-2002-01	3	Right Curved Paddle ASM	21	321-3	4	Screw-HH
6	T36054780	2	Hub-Disk, Spinner	22	323-4	8	Screw-HH
7	T0000-7676-01	1	Guard-Deflector, Sand	23	119-6920	12	Bolt-Carriage
8	T0000-2191	4	Slide-Attachment	24	3256-22	4	Washer-Flat
9	T0000-2189	2	Spacer-Attachment	25	3253-3	4	Washer-Lock
10	T36054750	2	Quick Attach Latch ASM	26	3256-24	10	Washer-Flat
10:3	T0002-1281-01	1	Hook ASM	27	T0000-2386	8	Washer-Plain
10:4	321-10	1	Screw-HH	28	T0000-2160	8	Washer-Plain
10:5	3296-42	1	Nut-Lock, NI	29	3253-21	8	Washer-Lock
10:6	100-1663	1	Pin-Hitch	30	104-7201	7	Nut-HF
11	T0001-9863	2	HYD Motor ASM	31	3296-29	16	Nut-Lock, NI
				32	119-6921	12	Nut-Hex, Flange



## Twin Spinner Assembly (continued)

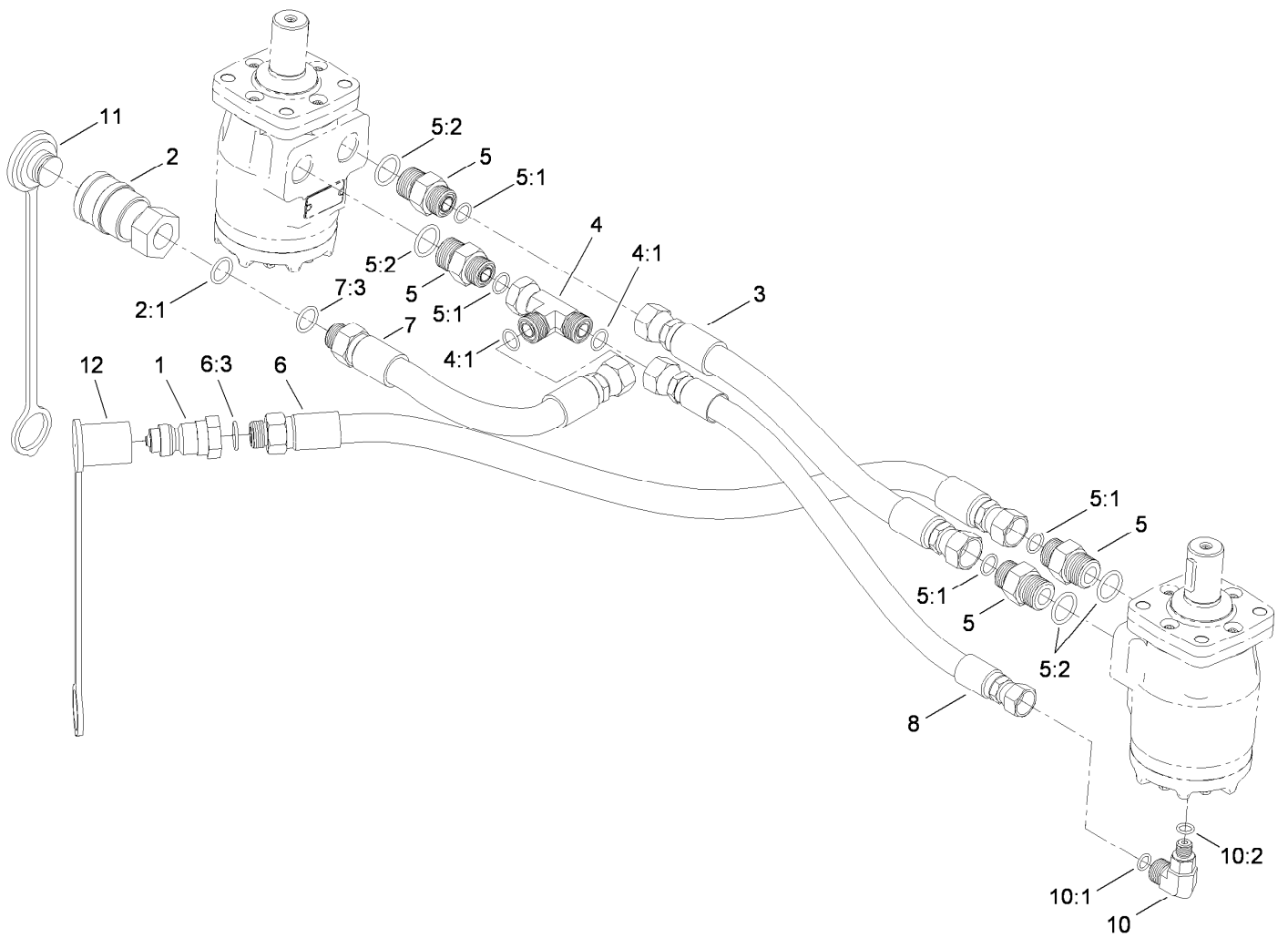
<i>Ref.</i>	<i>Part Number</i>	<i>Qty.</i>	<i>Description</i>
33	T0000-7686-01	1	Handle-Slide

<i>Ref.</i>	<i>Part Number</i>	<i>Qty.</i>	<i>Description</i>
34	T0002-2373-01	2	Plate-Wear, Spinner
35	119-6814	1	Decal-Operating System



## Hydraulic Motor Assembly No. T0001-9863

<i>Ref.</i>	<i>Part Number</i>	<i>Qty.</i>	<i>Description</i>
1	T56013016	1	Seal Kit



## Twin Spinner Hydraulic Assembly

<i>Ref.</i>	<i>Part Number</i>	<i>Qty.</i>	<i>Description</i>	<i>Ref.</i>	<i>Part Number</i>	<i>Qty.</i>	<i>Description</i>
1	98-4698	1	Male-Disconnect, Quick	7	120-0812	1	HYD Hose ASM
2	98-4699	1	Female-Disconnect, Quick	7:3	237-79	1	O-Ring
2:1	100-4165	1	Seal Kit	8	120-0810	1	HYD Hose ASM
3	117-0180	1	Hose-HYD	10	340-97	1	Fitting-HYD, 90 DEG
4	340-104	1	Tee-Fitting	10:1	237-22	1	O-Ring
4:1	237-30	2	O-Ring	10:2	237-78	1	O-Ring
5	340-6	4	Fitting-HYD, Straight	11	T56152150	1	Plug-Quick Connect, 1/2 Inch
5:1	237-30	1	O-Ring	12	T56152152	1	Cap-Quick Connect, 1/2 Inch
5:2	237-80	1	O-Ring				
6	120-0842	1	HYD Hose ASM				
6:3	237-79	1	O-Ring				



# Attachments and Accessories

## For 44701 ProPass 200 Top Dresser with Twin Spinner

<b>Product Name</b>	<b>Model/Part</b>
Twin Spinner .....	44702
Conveyor and Swivel Kit .....	44703
Tow-Type Chassis .....	44704
Fender Kit, Tow-Type Chassis .....	44705
Hose Assembly Kit, Tow-Type Chassis .....	44706
Toro Workman Chassis .....	44707
Storage Stand .....	44712
Hydraulic Power Pack .....	44713

**Notes:**

**Notes:**



**Count on it.**