



Count on it.

Parts Catalog

Polar Trac Kit

Groundsmaster® 7200 Series Mower

Model No. 30370—Serial No. 314000001 and Up



Ordering Replacement Parts

To order replacement parts, please supply the part number, the quantity, and the description of each part desired.

Understanding Reference Numbers

Each identified part in an illustration has a reference number. The reference number for a part also appears in the parts list, along with other information about the part.

This catalog uses two special reference number formats, one to indicate parts in a service assembly and another to indicate the quantity of a given part in an illustration.

Service Assembly Reference Numbers

Parts in service assemblies have reference numbers in the form a:b. The a represents the reference number of the entire service assembly and the b represents a sequential number unique to each part within the service assembly.

For example, a wheel assembly might be identified by reference number 6, the tire by 6:1, the valve by 6:2, and the wheel by 6:3. When you order the assembly identified by reference number 6, you receive all parts identified by reference numbers 6:1, 6:2, and 6:3. However, you may also order any part individually. Reference numbers of this type appear in illustration and in parts lists.

Reference Numbers Indicating Quantity

In an illustration, if a reference number indicates more than one part, the reference number has the form nX y. The n represents the quantity of the part, the X is the multiplication symbol, and the y represents the reference number.

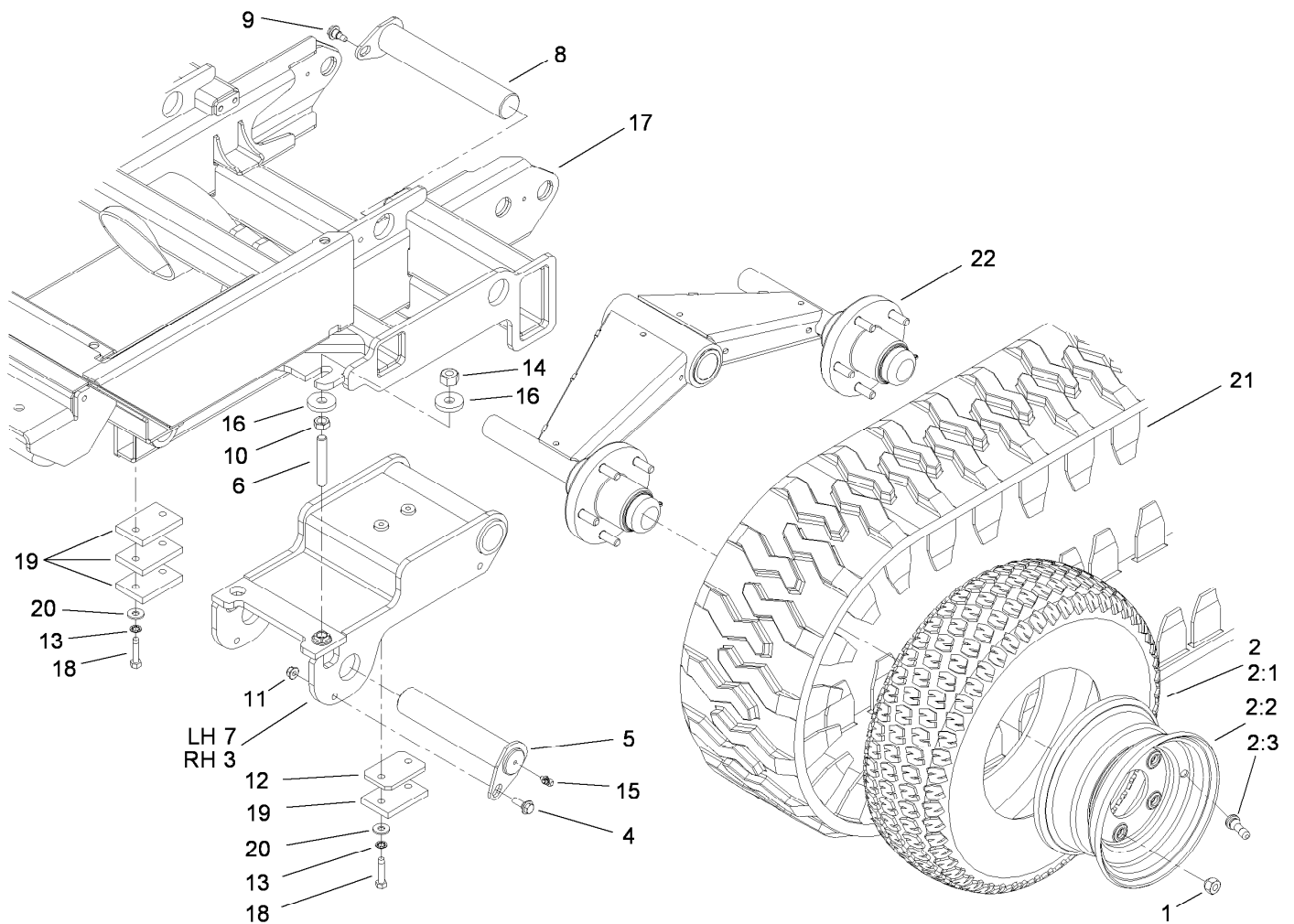
For example, in an illustration, the reference number 2X 37 means that two of the parts identified by reference number 37 are indicated.

List of Abbreviations

AR: as required	HLH: hex lag head	PTO: power-take-off
ASM: assembly	HOC: height-of-cut	RH: right hand
BBC: blade brake control	HSBH: hex socket button head	ROPS: roll-over protection system
BHTF: button head thread forming	HSFH: hex socket flat head	RRB: rear roller brush
CARR: carriage	HSH: hex socket head	SFH: slotted fillister head
CCW: counter clockwise	HWH: hex washer head	SHH: slotted hex head
CW: clockwise	HWHTF: hex washer head thread forming	SHWH: slotted hex washer head
DEG: degrees	HYD: hydraulic	SPH: slotted pan head
DPA: Dual Point Adjustment	LH: left hand	SQH: square head
ECM: electronic control module	LP: Liquefied Petroleum Gas	SRH: slotted round head
EXT: external	LPG: Liquefied Petroleum Gas	STD: standard
FH: flat head	NI: nylon insert	TAP: self tapping
GA: gauge	NPTF: national pipe thread fine	TTH: torx truss head
HD: heavy-duty	PFH: phillips flat head	
HF: hex flange	PPH: phillips pan head	
HH: hex head	PPHTF: phillips pan head thread forming	
HHF: hex head flange	PRH: phillips round head	
HHFTF: hex head flange thread forming	PTH: phillips truss head	
HJ: hex jam		

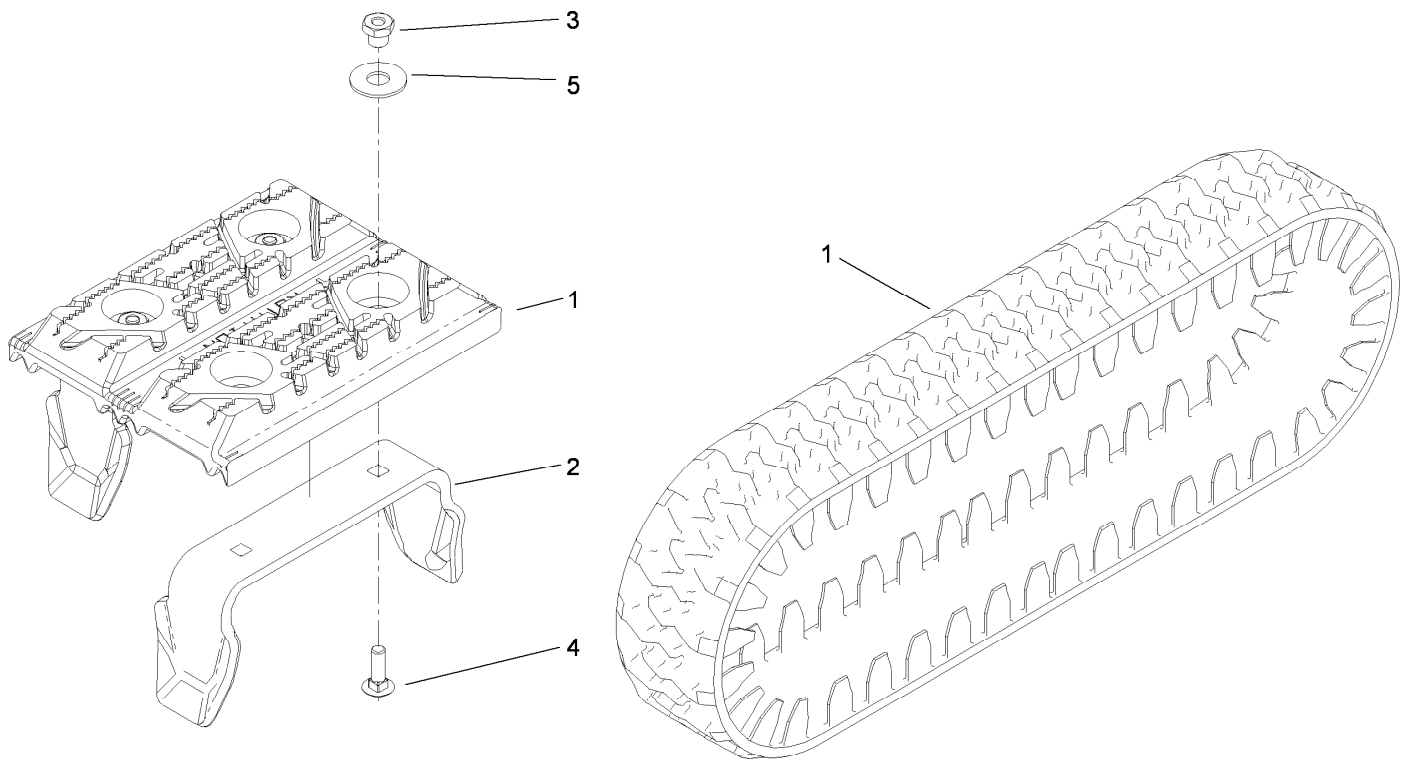
Contents

Track and Frame Assembly	4
Drive Track Assembly No. 108-5164	5
Bogie Assembly No. 112-1693.....	6
Foot Control Assembly	7
Lift Arm and Hydraulic Assembly.....	8
Hydraulic Cylinder Assembly No. 117-9227.....	10
2-Spool Hydraulic Valve Assembly No. 110-3588.....	11
Change Over Assembly	12
Skid Plate Assembly	14



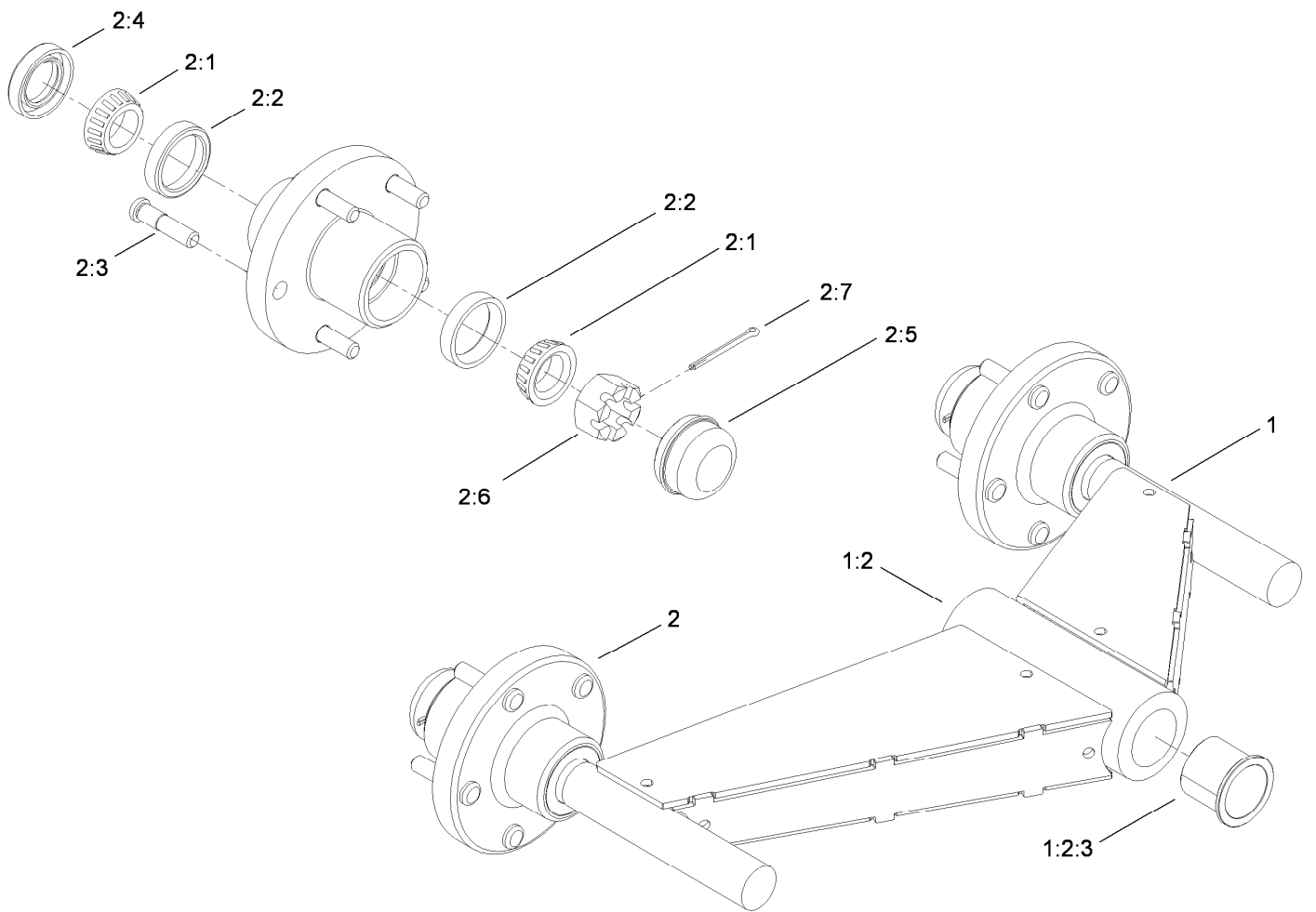
Track and Frame Assembly

Ref.	Part Number	Qty.	Description	Ref.	Part Number	Qty.	Description
1	23-7270	20	Nut-Wheel	11	104-8300	2	Nut-Flange, NI
2	110-5465	6	Wheel And Tire ASM	12	110-5454	2	Plate-Spacer
2:1	98-2662	1	Tire	13	3254-2	8	Washer-Lock, Internal
2:2	110-5466	1	Wheel	14	3296-25	2	Nut-Lock, NI
2:3	232-27	1	Stem-Valve	15	302-60	2	Fitting-Grease
3	110-9793-03	1	Pivot-RH	16	30-8770	4	Washer
4	27-0410	2	Screw-Shoulder	17	110-9767-03	1	Frame
5	108-9857	2	Pin-Pivot, Lower	18	32144-57	8	Screw
6	105-1088	2	Stud	19	69-9290	8	Pad-Bumper
7	108-5195-03	1	Pivot-LH	20	3256-3	8	Washer-Flat
8	110-9765	2	Pin-Pivot, Upper	21	108-5164	2	Track-Drive
9	99-5105	2	Bolt-Shoulder	22	112-1693	2	Bogie
10	3218-5	2	Nut-Jam				



Drive Track Assembly No. 108-5164

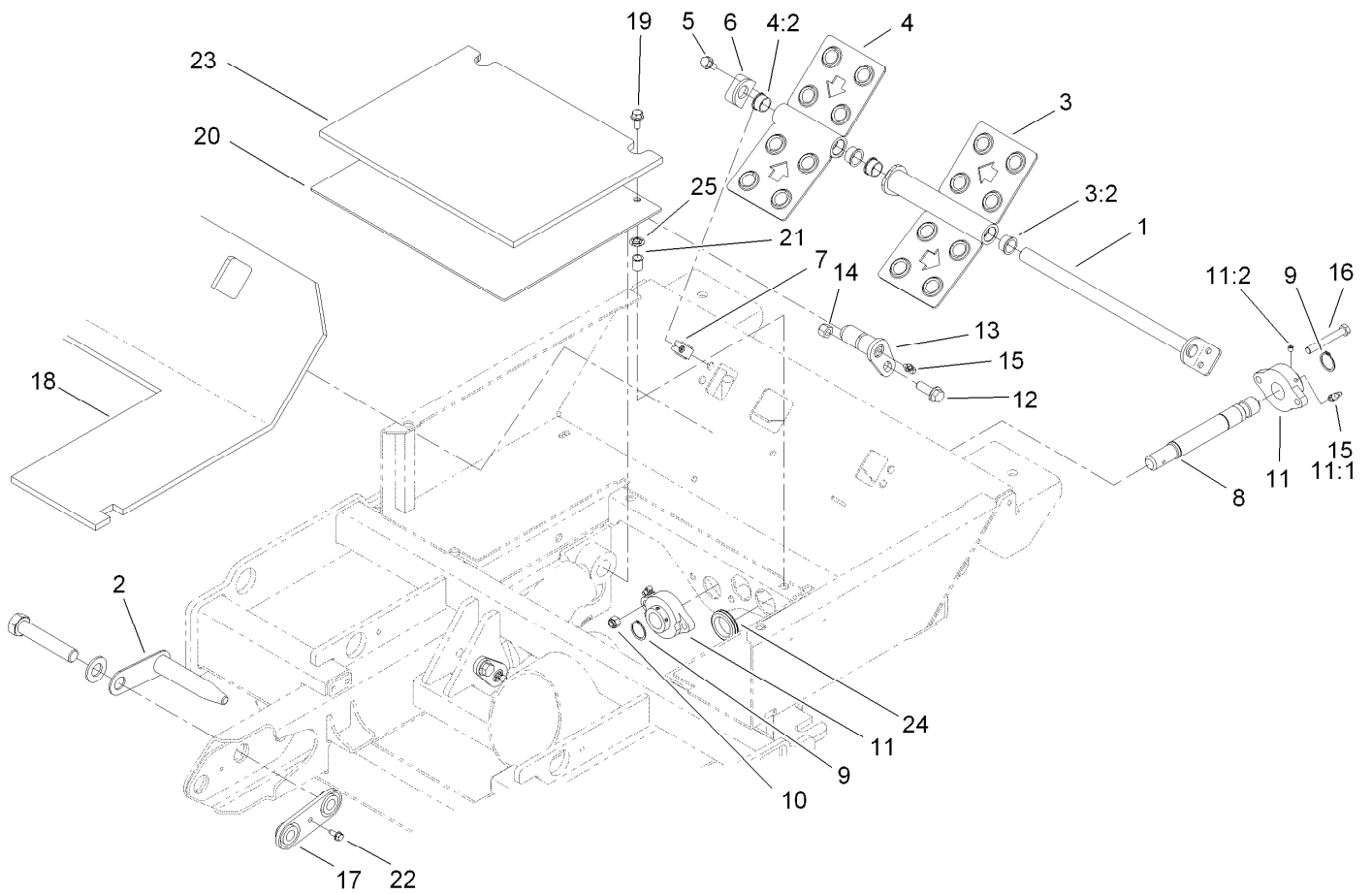
<i>Ref.</i>	<i>Part Number</i>	<i>Qty.</i>	<i>Description</i>
1	110-9786	1	Track-Rubber, Molded
2	110-9787	40	Guide-Track
3	110-9788	80	Nut-T, Plated
4	3230-2	80	Bolt-CARR
5	110-9789	80	Washer-Flat



Bogie Assembly No. 112-1693

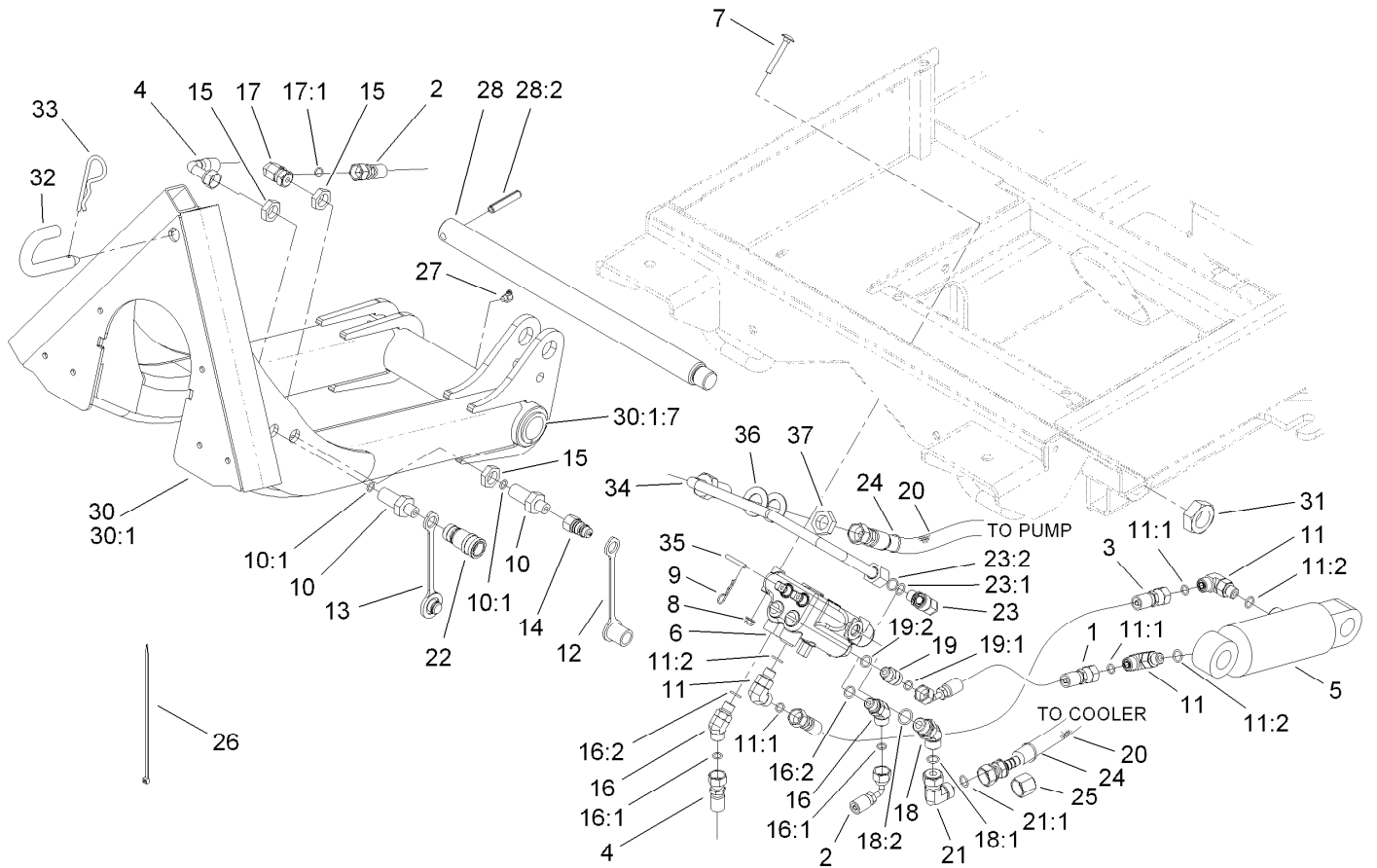
Ref.	Part Number	Qty.	Description
1		1	Pivot Arm ASM ●
1:2		1	Hub ASM ●
1:2:3	95-8805	2	Bushing
2	107-2615	2	Hub ASM
2:1	254-92	2	Cone-Bearing, Outer
2:2	254-72	2	Bearing-Cup, Tapered
2:3	127-6476	5	Stud-Wheel (Silver)
2:3	69-2990	5	Stud-Wheel (Black)
2:4	112-1690	1	Seal-Oil
2:5	112-1494	1	Cap-Dust
2:6	32136-11	1	Nut-Hex, Slot
2:7	3272-20	1	Pin-Cotter

● Not serviced separately



Foot Control Assembly

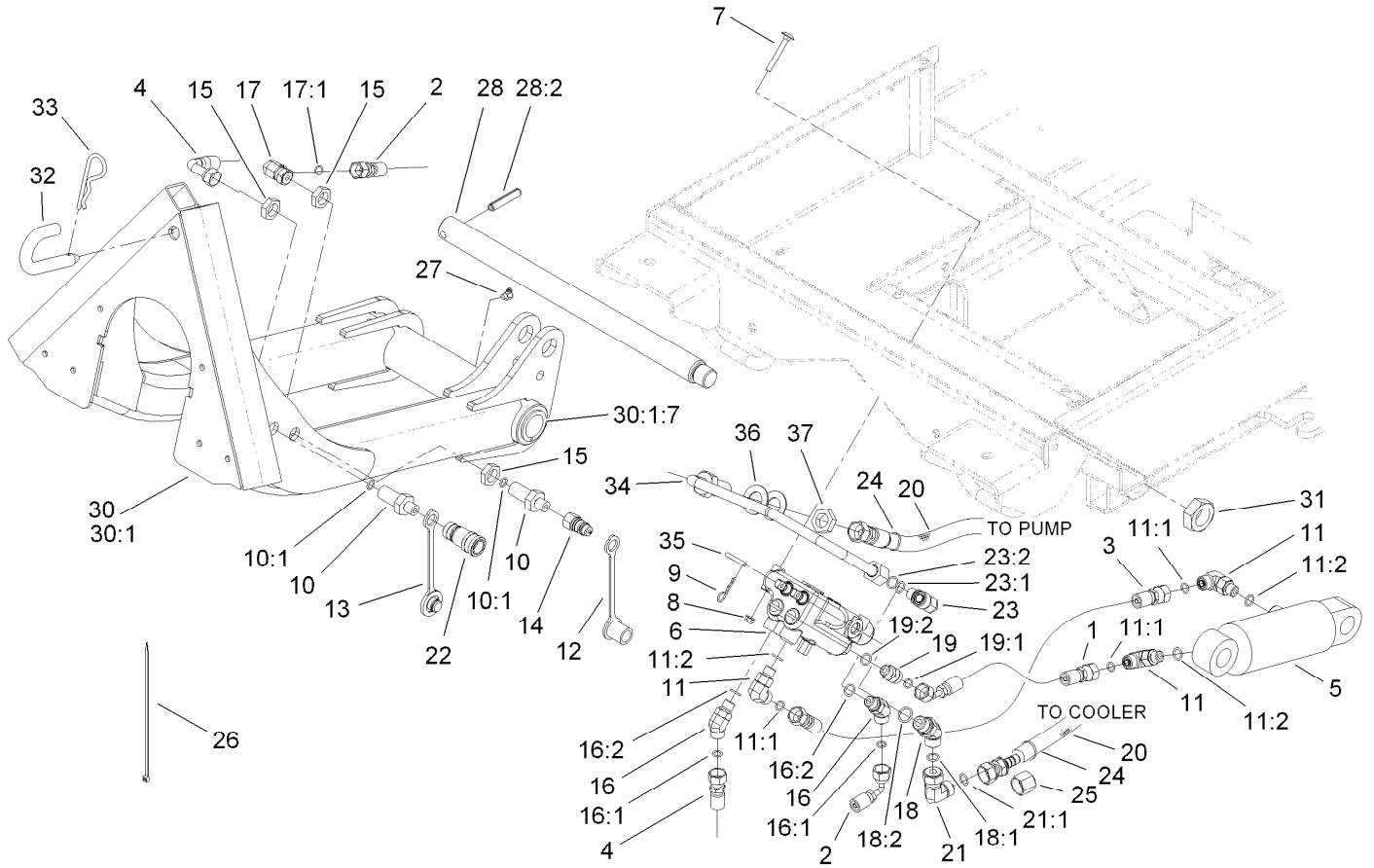
<i>Ref.</i>	<i>Part Number</i>	<i>Qty.</i>	<i>Description</i>	<i>Ref.</i>	<i>Part Number</i>	<i>Qty.</i>	<i>Description</i>
1	108-5181	1	Shaft-Control, Pivot	12	3234-15	2	Screw-HHF
2	108-9870	2	Pin-Coupler	13	98-2654	2	Pin-Pivot
3	112-9587	1	RH Pedal ASM	14	3296-48	2	Nut-Lock, NI
3:2	256-252	2	Bearing-Flange	15	302-60	4	Fitting-Grease
4	112-9588	1	LH Pedal ASM	16	323-13	2	Screw-HH
4:2	256-252	2	Bearing-Flange	17	110-9785	2	Plate-Retainer
5	3234-5	4	Screw-HHF	18	112-9556	1	Floormat-Platform
6	108-5178	1	Ear-Pivot	19	3234-5	2	Screw-HHF
7	110-3510	4	Nut-Retainer	20	108-9866-03	1	Plate-Cover
8	107-2604	1	Shaft	21	32148-7	2	Nut-Insert
9	32151-29	2	Ring-Retaining	22	32144-10	2	Screw-HWH
10	3296-39	2	Nut-Lock, NI	23	112-9555	1	Panel-Access, Floor
11	107-7851	2	Bearing-Flange, 2 Bolt	24	240-3	4	Grommet-Rubber
11:1	302-5	1	Fitting-Grease	25	117-2749	2	Nut-Push
11:2	3245-35	2	Screw-Set, HSH				



Lift Arm and Hydraulic Assembly

Ref.	Part Number	Qty.	Description	Ref.	Part Number	Qty.	Description
1	110-8223	1	Hose-HYD	16	340-87	2	Fitting-HYD, 45 DEG
2	110-8222	1	Hose-HYD	16:1	237-22	1	O-Ring
3	110-8224	1	Hose-HYD	16:2	237-42	1	O-Ring
4	110-8225	1	Hose-HYD	17	340-159	1	Fitting-HYD, 90 DEG
5	117-9227	1	Cylinder-HYD	17:1	237-22	2	O-Ring
6	110-3588	1	Valve-Hydraulic, 2 Spool	18	340-101	1	Fitting-HYD, 45 DEG
7	3230-33	2	Screw-CARR	18:1	237-30	1	O-Ring
8	104-7201	2	Nut-HF	18:2	237-79	1	O-Ring
9	9335044	2	Pin-Hair	19	340-2	1	Fitting-HYD, Straight
10	108-9800	2	Fitting-Bulkhead	19:1	237-22	1	O-Ring
10:1	237-22	1	O-Ring	19:2	237-42	1	O-Ring
11	340-77	3	Fitting-HYD, 90 DEG	20	112-1685	2	Cover-Hose
11:1	237-22	1	O-Ring	21	94-6031	1	Fitting-HYD
11:2	237-42	1	O-Ring	21:1	237-30	1	O-Ring
12	353-985	1	Cap-Dust	22	63-1220	1	Coupler-Disconnect, Quick
13	353-984	1	Plug-Dust	23	340-99	1	Fitting-HYD, 90 DEG
14	63-1240	1	Nipple-Disconnect, Quick	23:1	237-30	1	O-Ring
15	340-70	3	Nut-Lock	23:2	237-42	1	O-Ring

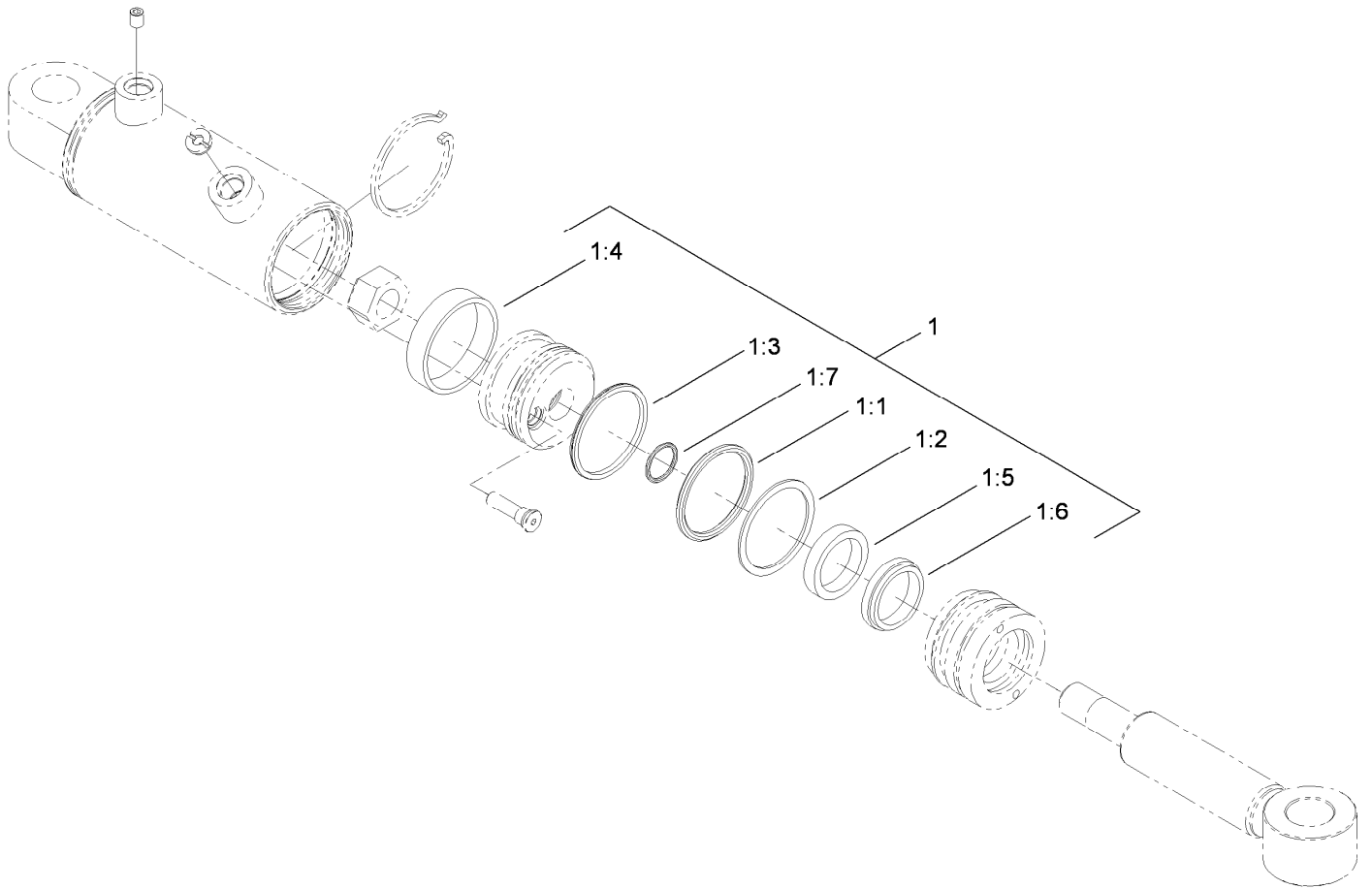
● Not serviced separately



Lift Arm and Hydraulic Assembly (continued)

<i>Ref.</i>	<i>Part Number</i>	<i>Qty.</i>	<i>Description</i>	<i>Ref.</i>	<i>Part Number</i>	<i>Qty.</i>	<i>Description</i>
24	3290-378	8	Tie-Cable	30:1:7	104-0015	2	Bushing-Flange
25	340-152	2	Cap-HYD	31	3296-49	1	Nut-Lock, NI
26	3290-379	4	Tie-Cable	32	110-9792	1	Pin-Lock
27	302-11	1	Fitting-Lube, 45 DEG	33	3290-256	1	Pin-Hair
28	117-9239	1	Pin ASM	34	112-9590	1	Tube-HYD
28:2	32121-110	1	Pin-Roll, Slotted	35	108-9871	2	Link-Lever, Valve
30	112-6370-03	1	Lift Arm ASM	36	69-8930	2	Washer
30:1		1	Arm-Lift ●	37	340-127	1	Nut-Bulkhead

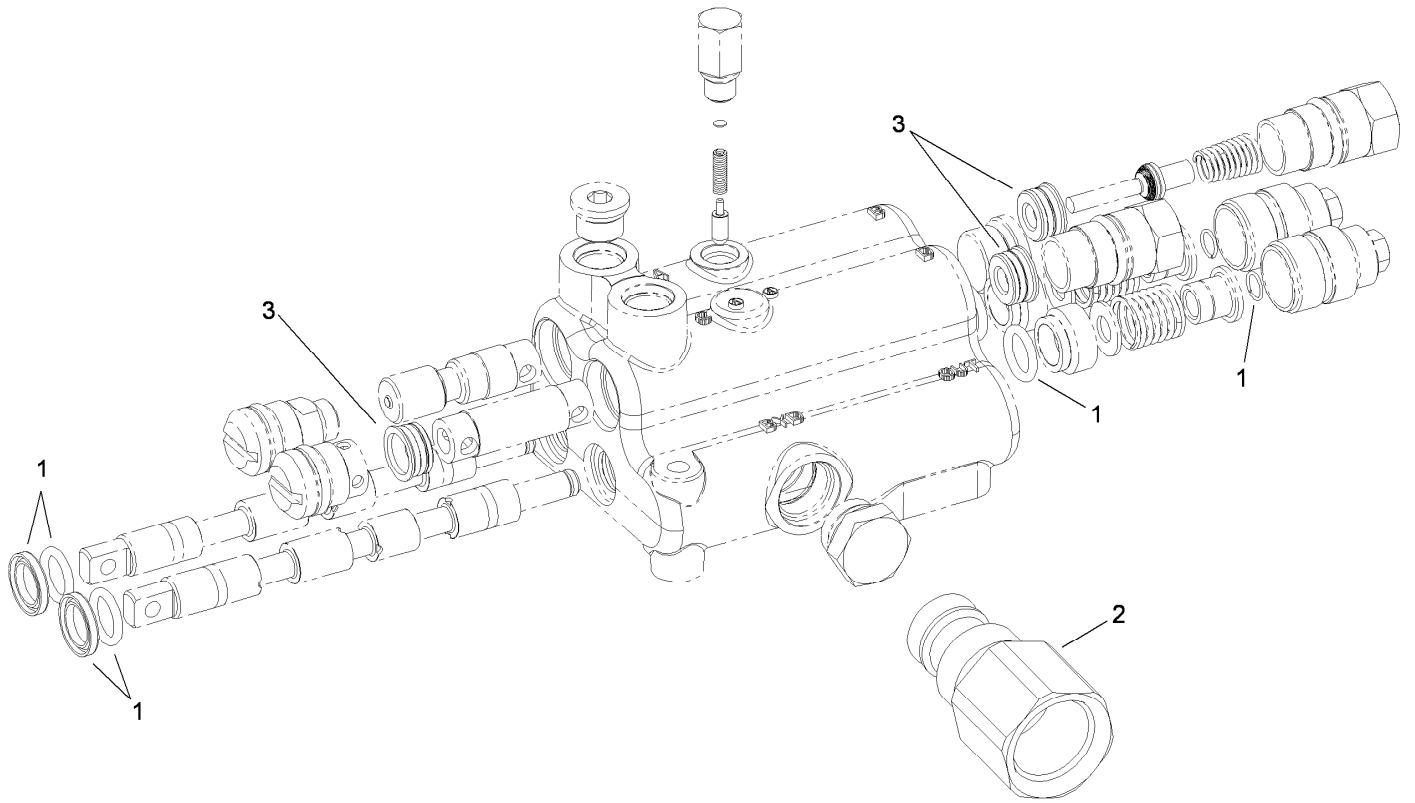
● Not serviced separately



Hydraulic Cylinder Assembly No. 117-9227

<i>Ref.</i>	<i>Part Number</i>	<i>Qty.</i>	<i>Description</i>
1	114-4049	1	Seal Kit
1:1		1	O-Ring ●
1:2		1	Backup ●
1:3		1	Seal-Bp ●
1:4		1	Ring-Wear ●
1:5		1	Polypak ●
1:6		1	Seal-Dust ●
1:7		1	O-Ring ●

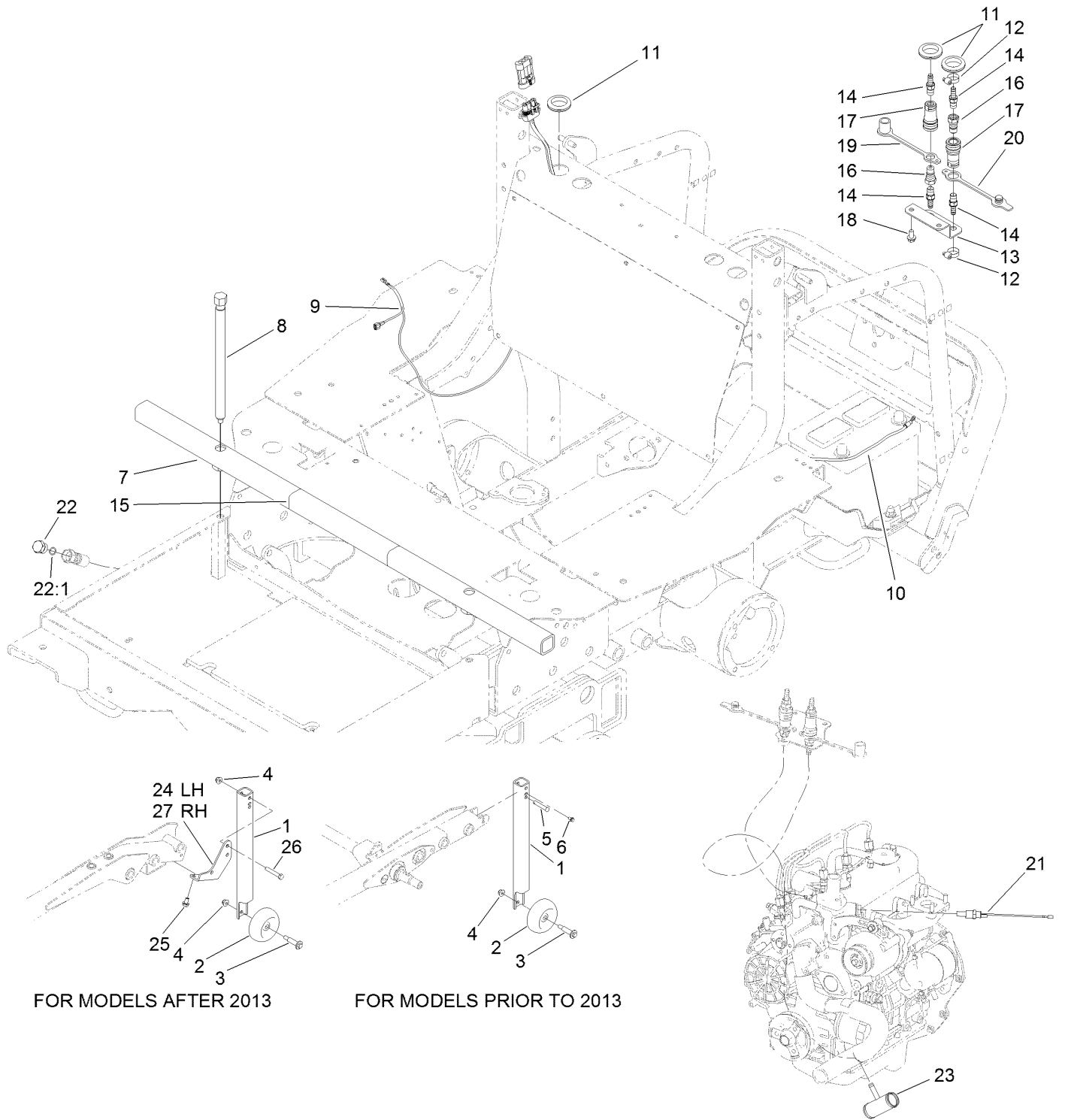
● Not serviced separately



2-Spool Hydraulic Valve Assembly No. 110-3588

<i>Ref.</i>	<i>Part Number</i>	<i>Qty.</i>	<i>Description</i>
1	99-3530	1	Seal Kit
2	110-5490	1	Power Beyond Sleeve Kit
3	117-9228	3	Seat-Hardened

Change Over Assembly

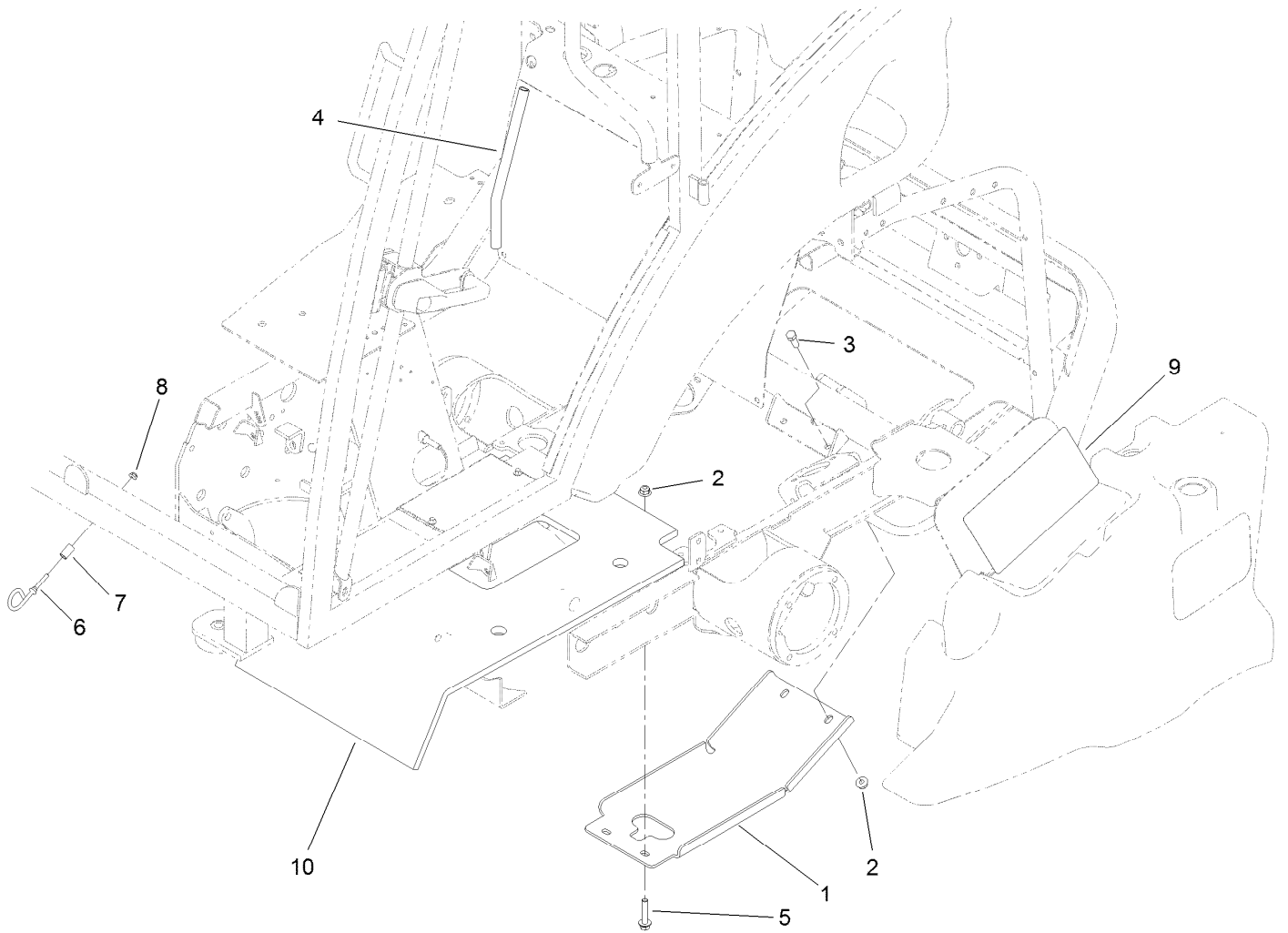


FOR MODELS AFTER 2013

FOR MODELS PRIOR TO 2013

Change Over Assembly (continued)

<i>Ref.</i>	<i>Part Number</i>	<i>Qty.</i>	<i>Description</i>	<i>Ref.</i>	<i>Part Number</i>	<i>Qty.</i>	<i>Description</i>
1	110-5491-03	2	Tube-Upright, Deck Removal	15	112-6312	3	Decal-Warning
2	701756	2	Wheel-Gage	16	108-9899	2	Coupler
3	56-6591	2	Screw-Shoulder, HWH	17	108-9898	2	Coupler
4	104-8301	6	Nut-Flange, NI	18	32144-14	2	Screw-HWHTF
5	283-82	2	Pin-Clevis	19	106-7881	1	Cap-Dust, HYD
6	32144-4	2	Screw-HWH	20	106-7882	1	Plug-Dust, HYD
7	110-5456-03	1	Tube ASM	21	112-6347	1	Switch-Temp, Dual
8	112-6358	2	Screw	22	106-8100	2	Plug-HYD
9	110-1667	1	Harness-Wire	22:1	237-79	1	O-Ring
10	108-9455	1	Harness-Wire, Fusible Link	23	93-5052	1	Fitting Radiator
11	240-3	3	Grommet-Rubber	24	121-3357-01	1	Bracket-Conversion, LH
12	2412-36	4	Clamp-Hose	25	32144-15	4	Screw-HHFTF
13	112-1498	1	Plate-Bulkhead	26	323-11	4	Screw-HH
14	108-0342	4	Fitting-Straight	27	121-3358-01	1	Bracket-Conversion, RH



Skid Plate Assembly

Ref.	Part Number	Qty.	Description
1	110-5516-03	1	Plate-Skid
2	104-8301	4	Nut-Flange, NI
3	323-6	2	Screw-HH
4	112-9581	2	Seal-Bulb
5	3234-19	2	Screw-HHF
6	107-3908	1	Guide-Rope, Upper
7	85-0290	1	Spacer-Pivot, Seat
8	104-7201	1	Nut-HF
9	114-4043	1	Decal-Service Instructions
10	127-6456	1	Foam-Seat

Notes:



Count on it.