



**Count on it.**

**Parts Catalog**

**18in Walk-Behind Aerator**

Model No. 23516—Serial No. 314000001 and Up

Model No. 33516—Serial No. 314000001 and Up



# Ordering Replacement Parts

To order replacement parts, please supply the part number, the quantity, and the description of each part desired.

## Understanding Reference Numbers

Each identified part in an illustration has a reference number. The reference number for a part also appears in the parts list, along with other information about the part.

This catalog uses two special reference number formats, one to indicate parts in a service assembly and another to indicate the quantity of a given part in an illustration.

## Service Assembly Reference Numbers

Parts in service assemblies have reference numbers in the form a:b. The a represents the reference number of the entire service assembly and the b represents a sequential number unique to each part within the service assembly.

For example, a wheel assembly might be identified by reference number 6, the tire by 6:1, the valve by 6:2, and the wheel by 6:3. When you order the assembly identified by reference number 6, you receive all parts identified by reference numbers 6:1, 6:2, and 6:3. However, you may also order any part individually. Reference numbers of this type appear in illustration and in parts lists.

## Reference Numbers Indicating Quantity

In an illustration, if a reference number indicates more than one part, the reference number has the form nX y. The n represents the quantity of the part, the X is the multiplication symbol, and the y represents the reference number.

For example, in an illustration, the reference number 2X 37 means that two of the parts identified by reference number 37 are indicated.

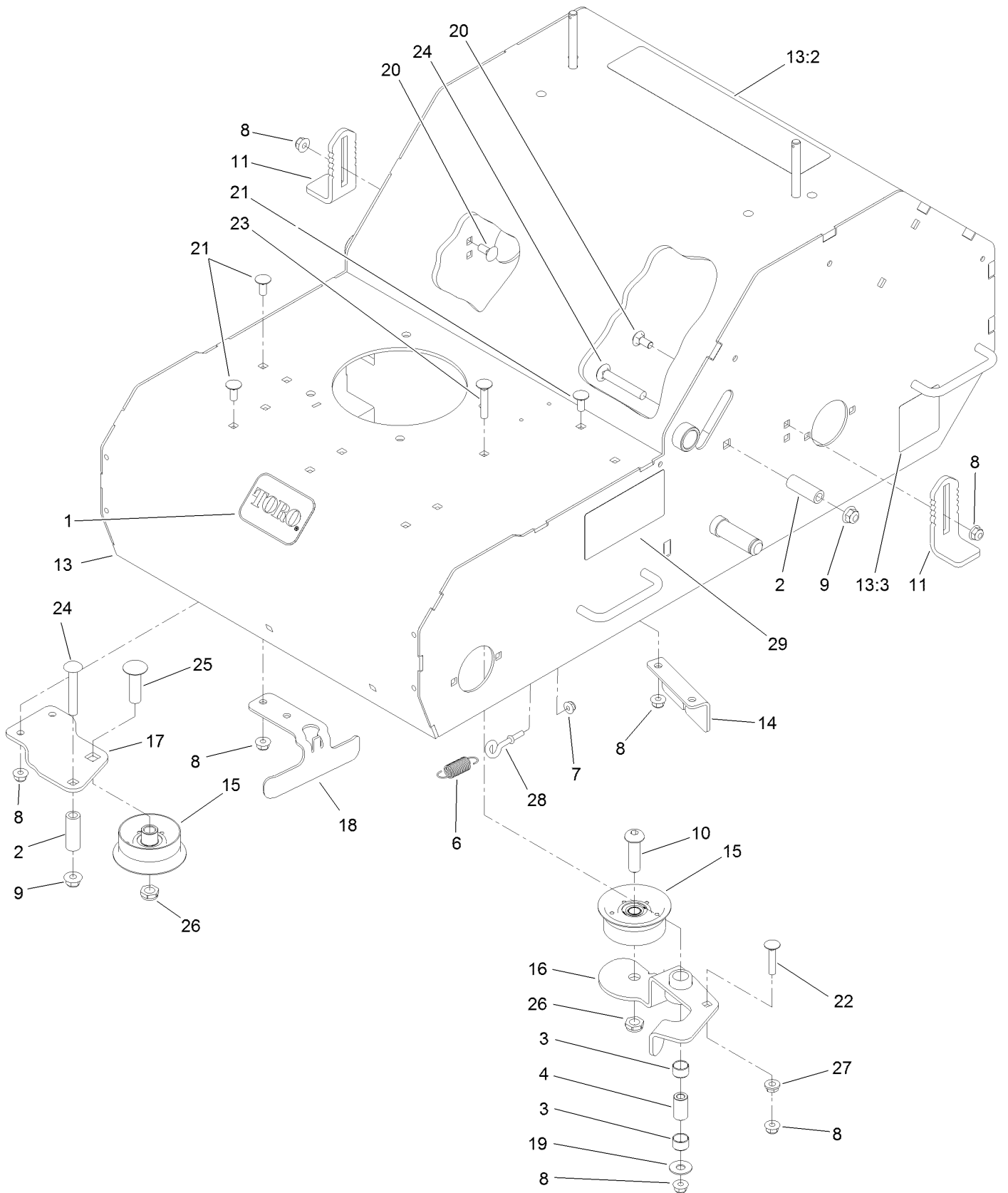
# List of Abbreviations

|  |  |  |
|--|--|--|
| <b>AR:</b> as required                       | <b>HLH:</b> hex lag head                       | <b>PTO:</b> power-take-off               |
| <b>ASM:</b> assembly                         | <b>HOC:</b> height-of-cut                      | <b>RH:</b> right hand                    |
| <b>BBC:</b> blade brake control              | <b>HSBH:</b> hex socket button head            | <b>ROPS:</b> roll-over protection system |
| <b>BHTF:</b> button head thread forming      | <b>HSFH:</b> hex socket flat head              | <b>RRB:</b> rear roller brush            |
| <b>CARR:</b> carriage                        | <b>HSH:</b> hex socket head                    | <b>SFH:</b> slotted fillister head       |
| <b>CCW:</b> counter clockwise                | <b>HWH:</b> hex washer head                    | <b>SHH:</b> slotted hex head             |
| <b>CW:</b> clockwise                         | <b>HWHTF:</b> hex washer head thread forming   | <b>SHWH:</b> slotted hex washer head     |
| <b>DEG:</b> degrees                          | <b>HYD:</b> hydraulic                          | <b>SPH:</b> slotted pan head             |
| <b>DPA:</b> Dual Point Adjustment            | <b>LH:</b> left hand                           | <b>SQH:</b> square head                  |
| <b>ECM:</b> electronic control module        | <b>LP:</b> Liquefied Petroleum Gas             | <b>SRH:</b> slotted round head           |
| <b>EXT:</b> external                         | <b>LPG:</b> Liquefied Petroleum Gas            | <b>STD:</b> standard                     |
| <b>FH:</b> flat head                         | <b>NI:</b> nylon insert                        | <b>TAP:</b> self tapping                 |
| <b>GA:</b> gauge                             | <b>NPTF:</b> national pipe thread fine         | <b>TTH:</b> torx truss head              |
| <b>HD:</b> heavy-duty                        | <b>PFH:</b> phillips flat head                 |  |
| <b>HF:</b> hex flange                        | <b>PPH:</b> phillips pan head                  |  |
| <b>HH:</b> hex head                          | <b>PPHTF:</b> phillips pan head thread forming |  |
| <b>HHF:</b> hex head flange                  | <b>PRH:</b> phillips round head                |  |
| <b>HHFTF:</b> hex head flange thread forming | <b>PTH:</b> phillips truss head                |  |
| <b>HJ:</b> hex jam                           |  |  |

# Contents

|   |    |
|---|----|
| Frame Assembly.....                     | 4  |
| Idler Sprocket and Weight Assembly..... | 6  |
| Engine Assembly.....                    | 8  |
| Transmission and Wheel Assembly.....    | 10 |
| Handle Assembly.....                    | 12 |
| Wheel Assembly.....                     | 14 |
| Tine Wheel Assembly.....                | 16 |

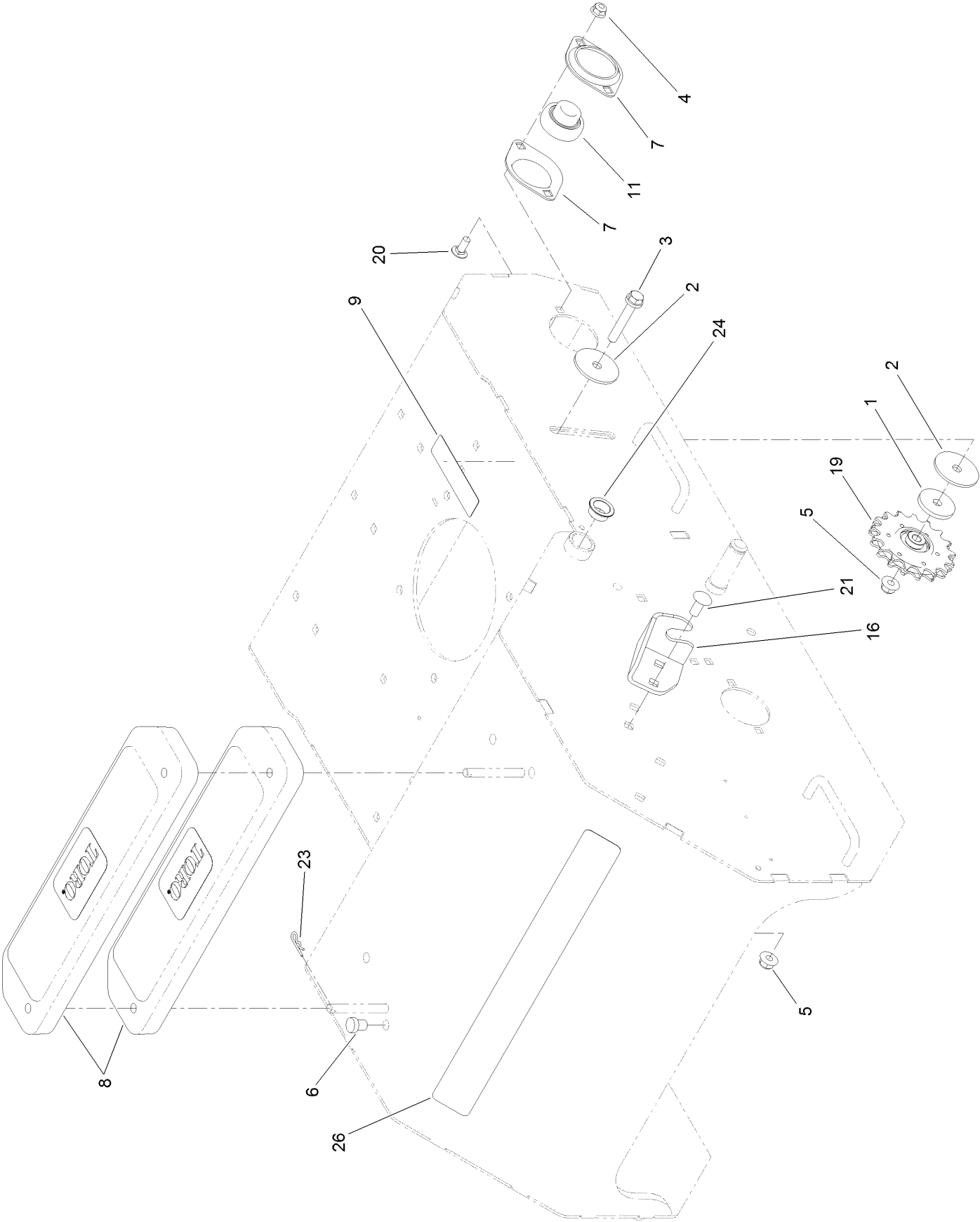
# Frame Assembly



## Frame Assembly (continued)

| <i>Ref.</i> | <i>Part Number</i> | <i>Qty.</i> | <i>Description</i>     | <i>Ref.</i> | <i>Part Number</i> | <i>Qty.</i> | <i>Description</i>    |
|-------------|--------------------|-------------|------------------------|-------------|--------------------|-------------|-----------------------|
| 1           | 70-2200            | 1           | Decal                  | 16          | 130-2128-03        | 1           | Arm-Idler             |
| 2           | 95-6448            | 3           | Spacer                 | 17          | 130-2131-03        | 1           | Bracket-Mount, Pulley |
| 3           | 103-6111           | 2           | Bearing                | 18          | 130-2132-03        | 1           | Guide-Belt            |
| 4           | 103-7108           | 1           | Bushing-Arm, Idler     | 19          | 1126               | 1           | Washer-Flat           |
| 6           | 104-0869           | 1           | Spring-Brake           | 20          | 3230-1             | 4           | Bolt-CARR             |
| 7           | 104-7201           | 1           | Nut-HF                 | 21          | 3230-23            | 6           | Screw-CARR            |
| 8           | 104-8300           | 10          | Nut-Flange, NI         | 22          | 3230-4             | 1           | Screw-CARR            |
| 9           | 104-8301           | 3           | Nut-Flange, NI         | 23          | 3230-5             | 1           | Screw-CARR            |
| 10          | 108-1993           | 1           | Screw-HSBH             | 24          | 3231-44            | 3           | Screw-CARR            |
| 11          | 116-9886           | 2           | Stop-Depth             | 25          | 3233-30            | 1           | Screw-CARR            |
| 13          | 125-3855           | 1           | Frame ASM              | 26          | 3296-45            | 2           | Nut-Lock, NI          |
| 13:2        | 121-2009           | 1           | Decal-Warning, Aerator | 27          | 32128-20           | 1           | Nut-HF                |
| 13:3        | 121-6150           | 2           | Decal-Warning          | 28          | 611243             | 1           | Bolt-Eye              |
| 14          | 125-3941-03        | 1           | Bracket-Mount, Cable   | 29          | 130-2155           | 1           | Decal-Lock, Lift      |
| 15          | 127-4068           | 2           | Pulley-Idler, Flat     |             |                    |             |                       |

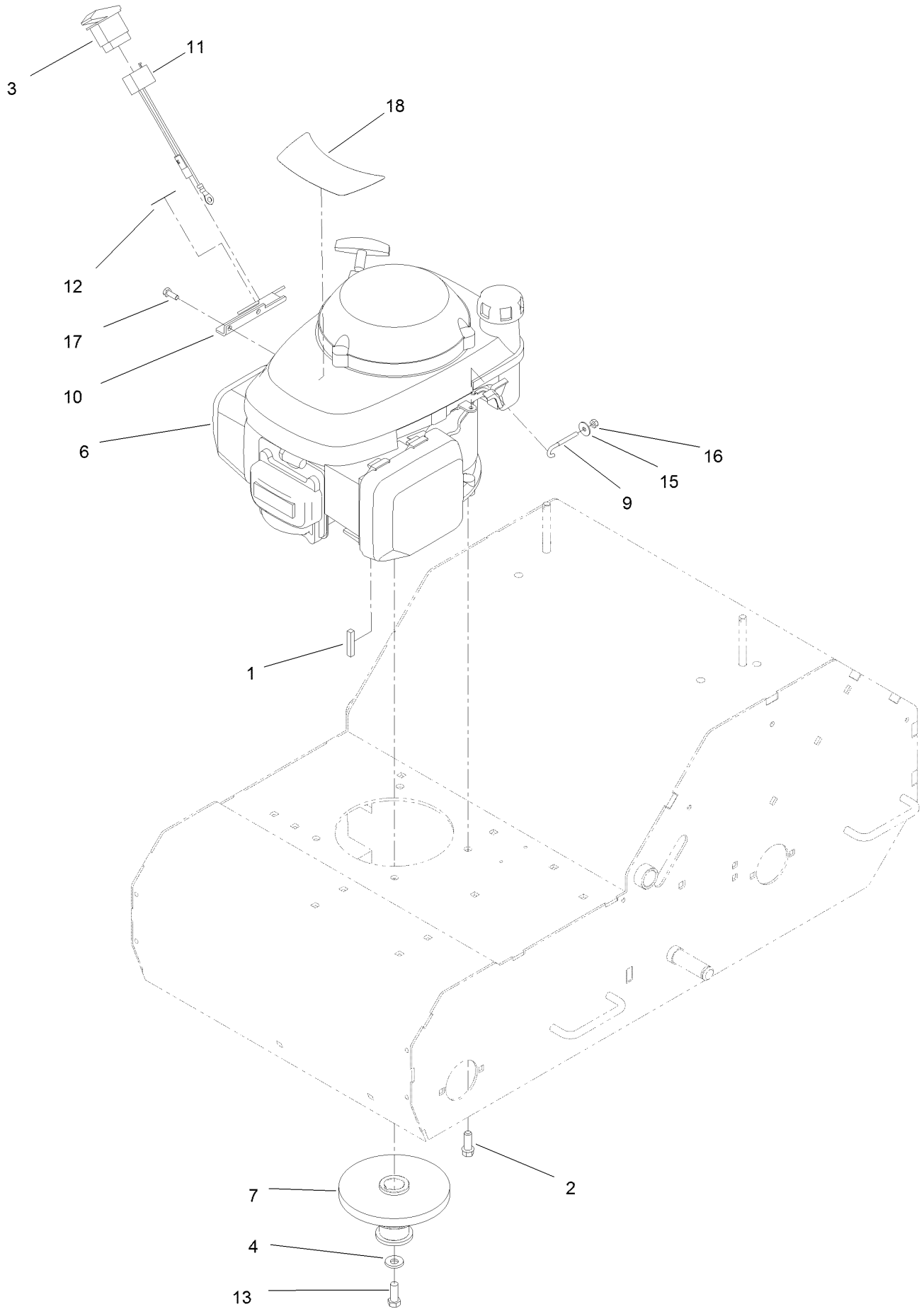
# Idler Sprocket and Weight Assembly



## Idler Sprocket and Weight Assembly (continued)

| <i>Ref.</i> | <i>Part Number</i> | <i>Qty.</i> | <i>Description</i>    | <i>Ref.</i> | <i>Part Number</i> | <i>Qty.</i> | <i>Description</i>     |
|-------------|--------------------|-------------|-----------------------|-------------|--------------------|-------------|------------------------|
| 1           | 5-1720             | 1           | Washer                | 11          | 106-8448           | 2           | Bearing-Race, Extended |
| 2           | 83-1040            | 2           | Washer-Flat           | 16          | 130-2147           | 1           | Bracket-Cable          |
| 3           | 100-2592           | 1           | Screw-HHF             | 19          | 130-2114           | 1           | Sprocket-Idler         |
| 4           | 104-8300           | 4           | Nut-Flange, NI        | 20          | 3230-23            | 4           | Screw-CARR             |
| 5           | 104-8301           | 4           | Nut-Flange, NI        | 21          | 3231-27            | 2           | Screw-CARR             |
| 6           | 105-4740           | 4           | Bumper-Rubber         | 23          | 3290-307           | 2           | Pin-Hair               |
| 7           | 105-9714           | 4           | Flange-Bearing        | 24          | 108519             | 2           | Bushing-Bronze         |
| 8           | 112-7059-01        | 2           | Weight-Cast           | 26          | 130-2161           | 1           | Decal-Operation        |
| 9           | 117-2718           | 1           | Decal-Arrester, Spark |             |                    |             |                        |

# Engine Assembly

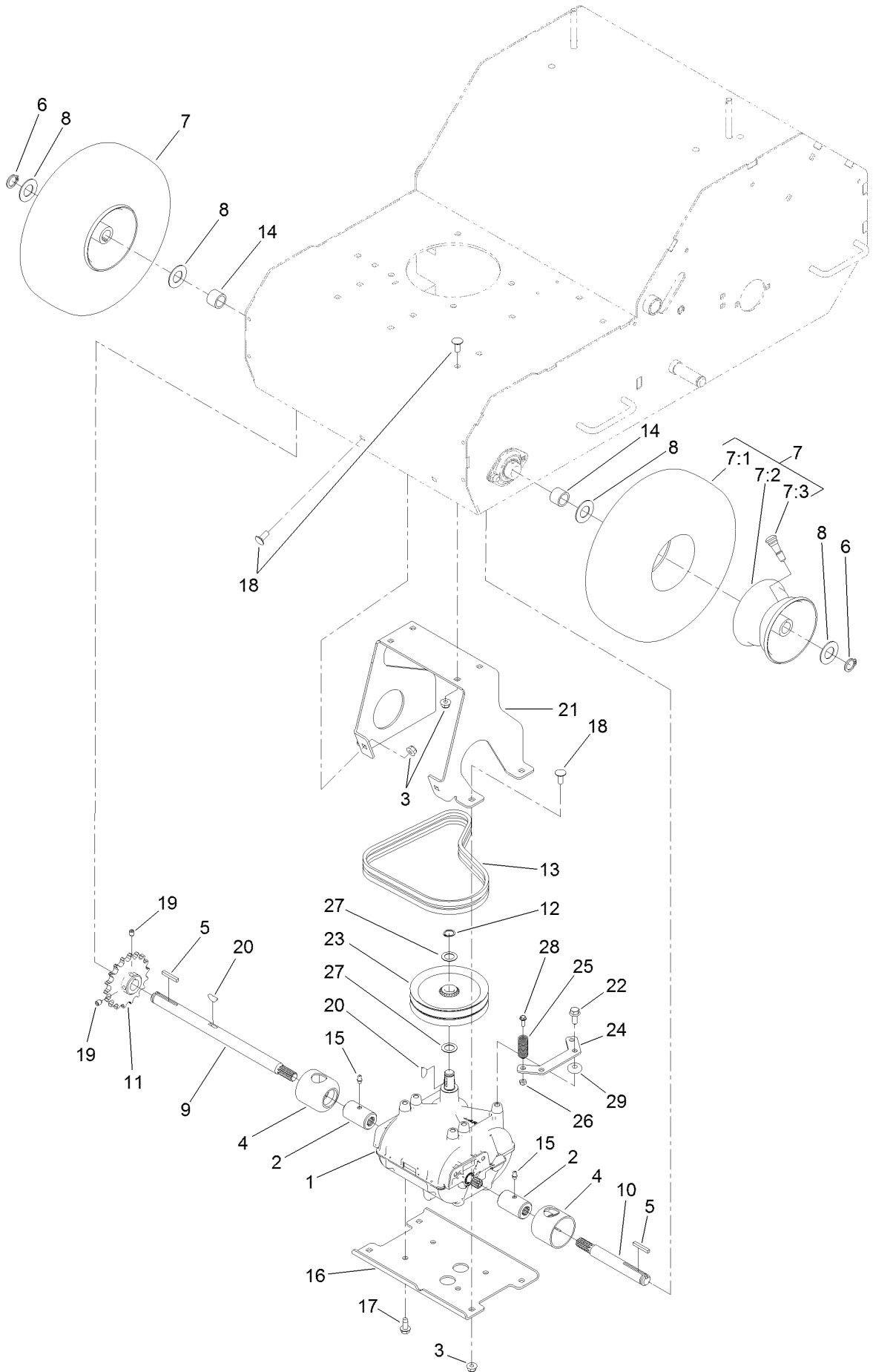




## Engine Assembly (continued)

| <i>Ref.</i> | <i>Part Number</i> | <i>Qty.</i> | <i>Description</i>            | <i>Ref.</i> | <i>Part Number</i> | <i>Qty.</i> | <i>Description</i> |
|-------------|--------------------|-------------|-------------------------------|-------------|--------------------|-------------|--------------------|
| 1           | 67-7490            | 1           | Key-Square                    | 10          | 121-6200-03        | 1           | Bracket-Switch     |
| 2           | 95-1726            | 4           | Screw-Taptite                 | 11          | 121-6201           | 1           | Harness-Wire       |
| 3           | 95-8999            | 1           | Switch                        | 12          | 121-6229           | 1           | Decal-On/Off       |
| 4           | 98-5975            | 1           | Washer-Belleville             | 13          | 3211-4             | 1           | Screw-HH           |
| 6           | 112-8771           | 1           | Engine-Honda, Gsv190La<br>A3T | 15          | 3256-61            | 1           | Washer-Flat        |
| 7           | 127-4097           | 1           | Pulley-Engine, Double         | 16          | 3296-2             | 1           | Nut-Lock, NI       |
| 9           | 121-6186           | 1           | Hook-Override                 | 17          | 33113-016          | 2           | Screw-HH           |
|             |                    |             |                               | 18          | 117-5245           | 1           | Decal-Engine       |

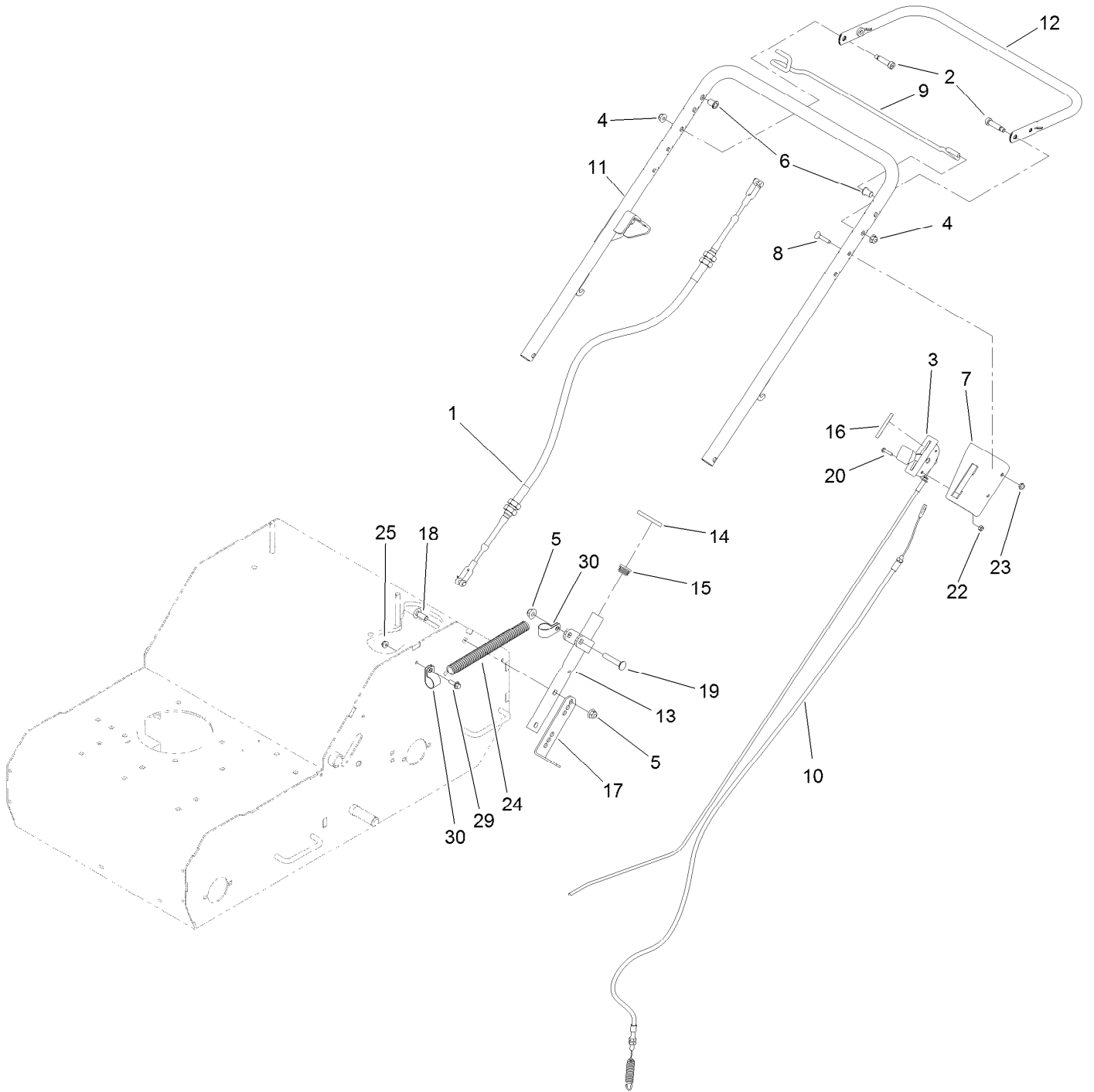
# Transmission and Wheel Assembly



## Transmission and Wheel Assembly (continued)

| <i>Ref.</i> | <i>Part Number</i> | <i>Qty.</i> | <i>Description</i>   | <i>Ref.</i> | <i>Part Number</i> | <i>Qty.</i> | <i>Description</i>             |
|-------------|--------------------|-------------|----------------------|-------------|--------------------|-------------|--------------------------------|
| 1           | 120-3695           | 1           | Transmission         | 15          | 302-19             | 2           | Fitting-Grease                 |
| 2           | 1-323680           | 2           | Coupler              | 16          | 125-3823-03        | 1           | Mount-Transmission, Lower      |
| 3           | 104-8300           | 10          | Nut-Flange, NI       | 17          | 9264964            | 4           | Screw-HWH, Thread Cut          |
| 4           | 51-4220            | 2           | Guard-Coupler        | 18          | 3230-23            | 10          | Screw-CARR                     |
| 5           | 92-2649            | 2           | Key-Square           | 19          | 3246-3             | 2           | Screw-HSH                      |
| 6           | 32120-93           | 2           | Ring-Retaining       | 20          | 3257-5             | 2           | Key-Woodruff                   |
| 7           | 120-3550           | 2           | Wheel ASM            | 21          | 125-3938-03        | 1           | Channel-Mount,<br>Transmission |
| 7:1         | 121-6081           | 1           | Tire                 | 22          | 3234-47            | 2           | Screw-HHF                      |
| 7:2         | 121-6082           | 1           | Wheel-Rim            | 23          | 127-4003           | 1           | Sheave                         |
| 7:3         | 5108               | 1           | Valve                | 24          | 130-2105-03        | 1           | Guide-Spring, Mount            |
| 8           | 3256-39            | 4           | Washer-Flat          | 25          | 127-4077           | 2           | Spring-Retainer                |
| 9           | 121-4878           | 1           | Shaft-Transmission   | 26          | 3296-2             | 2           | Nut-Lock, NI                   |
| 10          | 121-4879           | 1           | Shaft-Transmission   | 27          | 108-0015           | 2           | Washer-Flat                    |
| 11          | 130-2115           | 1           | Sprocket             | 28          | 32105-23           | 2           | Screw                          |
| 12          | 32120-64           | 1           | Ring-Snap, External  | 29          | 115-5118           | 2           | Washer                         |
| 13          | 130-2142           | 1           | Belt-V, Matched Pair |             |                    |             |                                |
| 14          | 83-0730            | 2           | Spacer-Lockup        |             |                    |             |                                |

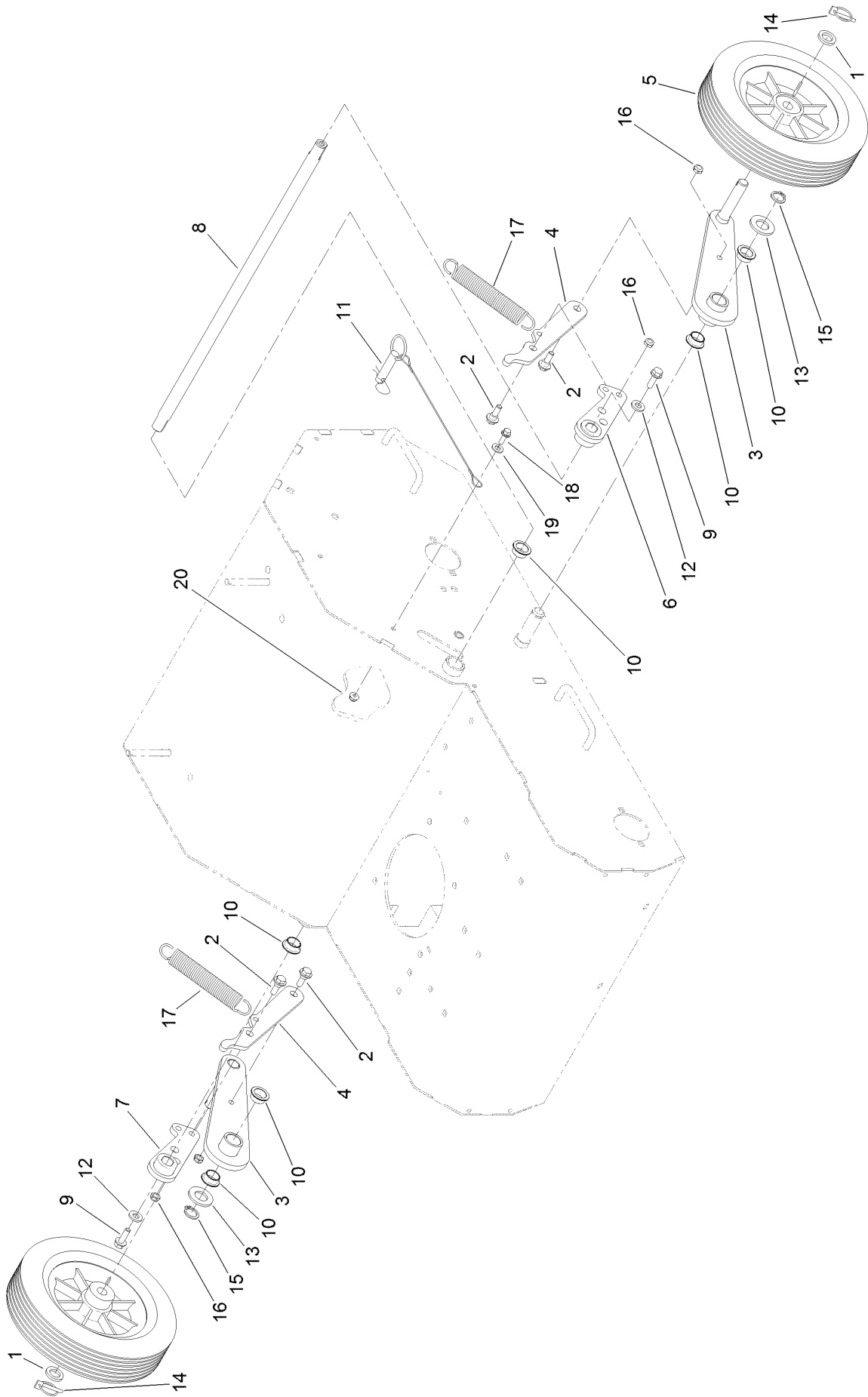
# Handle Assembly



## Handle Assembly (continued)

| <i>Ref.</i> | <i>Part Number</i> | <i>Qty.</i> | <i>Description</i> | <i>Ref.</i> | <i>Part Number</i> | <i>Qty.</i> | <i>Description</i>   |
|-------------|--------------------|-------------|--------------------|-------------|--------------------|-------------|----------------------|
| 1           | 130-2160           | 1           | Cable-Push/Pull    | 14          | 121-6202           | 2           | Ring-Handle Lock     |
| 2           | 65-9340            | 2           | Bolt-Shoulder      | 15          | 121-4870           | 2           | Plug                 |
| 3           | 130-2136           | 1           | Control-Throttle   | 16          | 121-6222           | 1           | Decal-Throttle/Choke |
| 4           | 104-8300           | 2           | Nut-Flange, NI     | 17          | 130-2150-03        | 2           | Spring-Post          |
| 5           | 104-8301           | 6           | Nut-Flange, NI     | 18          | 3231-22            | 4           | Screw-CARR           |
| 6           | 109-2713           | 2           | Bushing            | 19          | 3231-6             | 2           | Screw-CARR           |
| 7           | 127-4058-03        | 1           | Bracket-Throttle   | 20          | 106-9169           | 2           | Screw-HWH            |
| 8           | 109-8144           | 3           | Bolt-Handle        | 22          | 3296-2             | 2           | Nut-Lock, NI         |
| 9           | 130-2130           | 1           | Bail-Traction      | 23          | 3296-56            | 2           | Nut-Lock, NI         |
| 10          | 121-4860           | 1           | Cable-Idler        | 24          | 121-5799           | 1           | Conduit-Convolutd    |
| 11          | 121-4862-03        | 1           | Handle             | 25          | 104-7201           | 1           | Nut-HF               |
| 12          | 130-2102-03        | 1           | Handle-Lift        | 29          | 3234-4             | 1           | Screw-HHF            |
| 13          | 121-4866-03        | 2           | Mount-Handle       | 30          | 2412-41            | 2           | Clamp                |

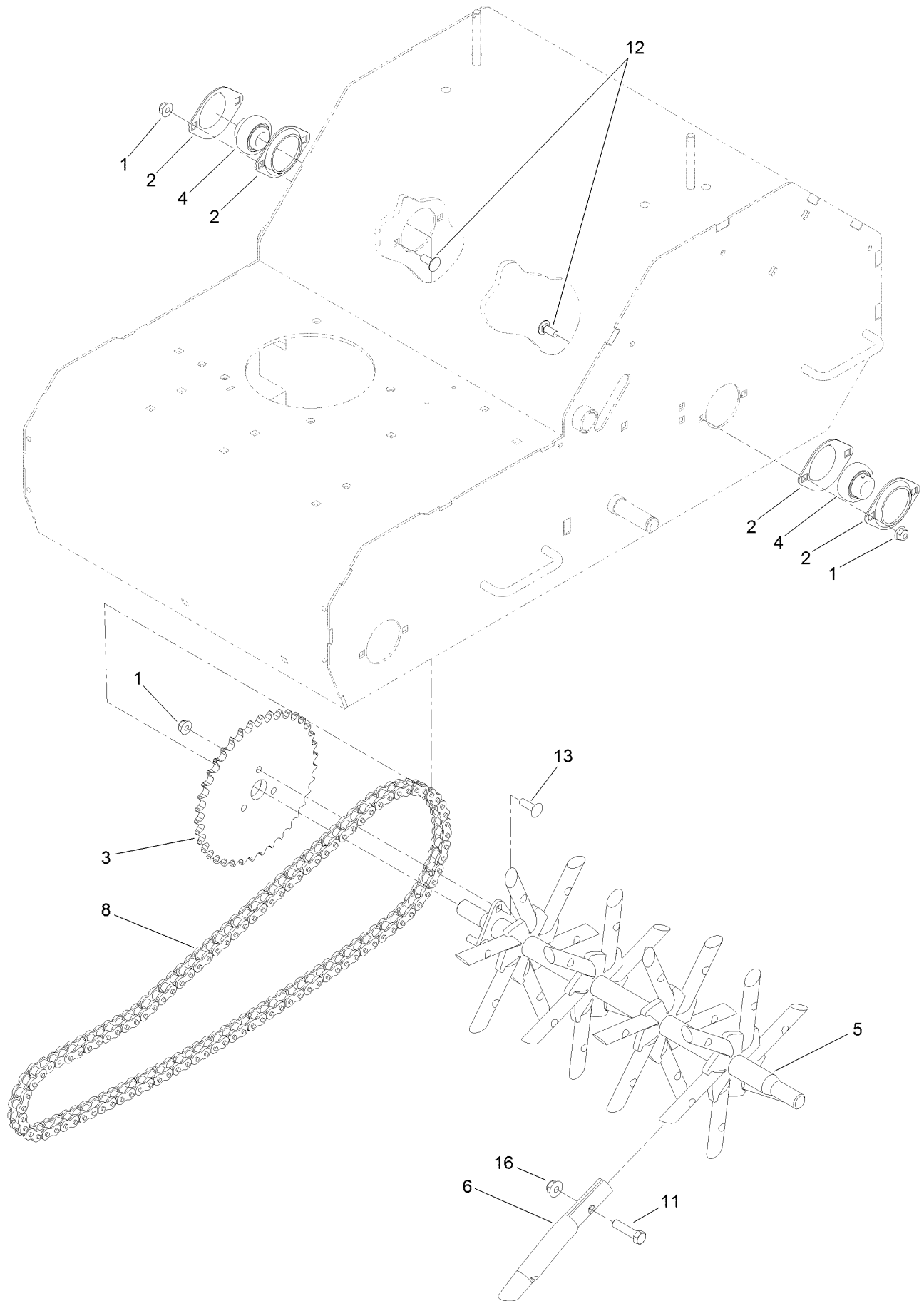
# Wheel Assembly



## Wheel Assembly (continued)

| <i>Ref.</i> | <i>Part Number</i> | <i>Qty.</i> | <i>Description</i>      | <i>Ref.</i> | <i>Part Number</i> | <i>Qty.</i> | <i>Description</i> |
|-------------|--------------------|-------------|-------------------------|-------------|--------------------|-------------|--------------------|
| 1           | 63-9710            | 2           | Spacer-Bearing          | 11          | 106-9951           | 1           | Hitch Pin ASM      |
| 2           | 116-2670           | 4           | Screw-Shoulder          | 12          | 100-4852           | 2           | Washer-Hardened    |
| 3           | 121-4886-03        | 2           | Arm-Wheel               | 13          | 3256-28            | 2           | Washer-Flat        |
| 4           | 130-2148-03        | 2           | Link-Connecting, Pinned | 14          | 3290-495           | 2           | Pin-Klik           |
| 5           | 121-4897           | 2           | Wheel-Transport         | 15          | 32120-93           | 2           | Ring-Retaining     |
| 6           | 130-2157-03        | 1           | Hub-Lift, LH            | 16          | 3296-47            | 4           | Nut-Lock, NI       |
| 7           | 130-2158-03        | 1           | Hub-Lift, RH            | 17          | 125-3786           | 2           | Spring-Extension   |
| 8           | 125-3856           | 1           | Shaft-Pivot             | 18          | 3234-4             | 1           | Screw-HHF          |
| 9           | 3234-17            | 2           | Screw-HHF               | 19          | 3256-23            | 1           | Washer-Flat        |
| 10          | 108519             | 4           | Bushing-Bronze          | 20          | 104-7201           | 1           | Nut-HF             |

# Tine Wheel Assembly





## Tine Wheel Assembly (continued)

| <i>Ref.</i> | <i>Part Number</i> | <i>Qty.</i> | <i>Description</i>     | <i>Ref.</i> | <i>Part Number</i> | <i>Qty.</i> | <i>Description</i> |
|-------------|--------------------|-------------|------------------------|-------------|--------------------|-------------|--------------------|
| 1           | 104-8300           | 7           | Nut-Flange, NI         | 8           | 130-2112           | 1           | Chain              |
| 2           | 105-9714           | 4           | Flange-Bearing         | 11          | 323-8              | 24          | Screw-HH           |
| 3           | 130-2116           | 1           | Sprocket               | 12          | 3230-23            | 4           | Screw-CARR         |
| 4           | 106-8448           | 2           | Bearing-Race, Extended | 13          | 3230-22            | 3           | Screw-CARR         |
| 5           | 125-3852-01        | 1           | Wheel-Tine             | 16          | 104-8301           | 24          | Nut-Flange, NI     |
| 6           | 121-4894           | 24          | Tine-Coring            |             |                    |             |                    |

**Notes:**

**Notes:**



**Count on it.**