



Count on it.

Parts Catalog

**Pro Force Debris Blower
Groundsmaster® 360 Traction Units
Model No. 44547—Serial No. 313000001 and Up**



Ordering Replacement Parts

To order replacement parts, please supply the part number, the quantity, and the description of each part desired.

Understanding Reference Numbers

Each identified part in an illustration has a reference number. The reference number for a part also appears in the parts list, along with other information about the part.

This catalog uses two special reference number formats, one to indicate parts in a service assembly and another to indicate the quantity of a given part in an illustration.

Service Assembly Reference Numbers

Parts in service assemblies have reference numbers in the form a:b. The a represents the reference number of the entire service assembly and the b represents a sequential number unique to each part within the service assembly.

For example, a wheel assembly might be identified by reference number 6, the tire by 6:1, the valve by 6:2, and the wheel by 6:3. When you order the assembly identified by reference number 6, you receive all parts identified by reference numbers 6:1, 6:2, and 6:3. However, you may also order any part individually. Reference numbers of this type appear in illustration and in parts lists.

Reference Numbers Indicating Quantity

In an illustration, if a reference number indicates more than one part, the reference number has the form nX y. The n represents the quantity of the part, the X is the multiplication symbol, and the y represents the reference number.

For example, in an illustration, the reference number 2X 37 means that two of the parts identified by reference number 37 are indicated.

List of Abbreviations

AR: as required

ASM: assembly

BBC: blade brake control

BHTF: button head thread forming

CARR: carriage

CCW: counter clockwise

CW: clockwise

DEG: degrees

DPA: Dual Point Adjustment

ECM: electronic control module

EXT: external

FH: flat head

GA: gauge

HD: heavy-duty

HF: hex flange

HH: hex head

HHF: hex head flange

HHFTF: hex head flange thread forming

HJ: hex jam

HLH: hex lag head

HOC: height-of-cut

HSBH: hex socket button head

HSFH: hex socket flat head

HSH: hex socket head

HWH: hex washer head

HWHTF: hex washer head thread forming

HYD: hydraulic

LH: left hand

LP: Liquefied Petroleum Gas

LPG: Liquefied Petroleum Gas

NI: nylon insert

NPTF: national pipe thread fine

PFH: phillips flat head

PPH: phillips pan head

PPHTF: phillips pan head thread forming

PRH: phillips round head

PTH: phillips truss head

PTO: power-take-off

RH: right hand

ROPS: roll-over protection system

RRB: rear roller brush

SFH: slotted fillister head

SHH: slotted hex head

SHWH: slotted hex washer head

SPH: slotted pan head

SQH: square head

SRH: slotted round head

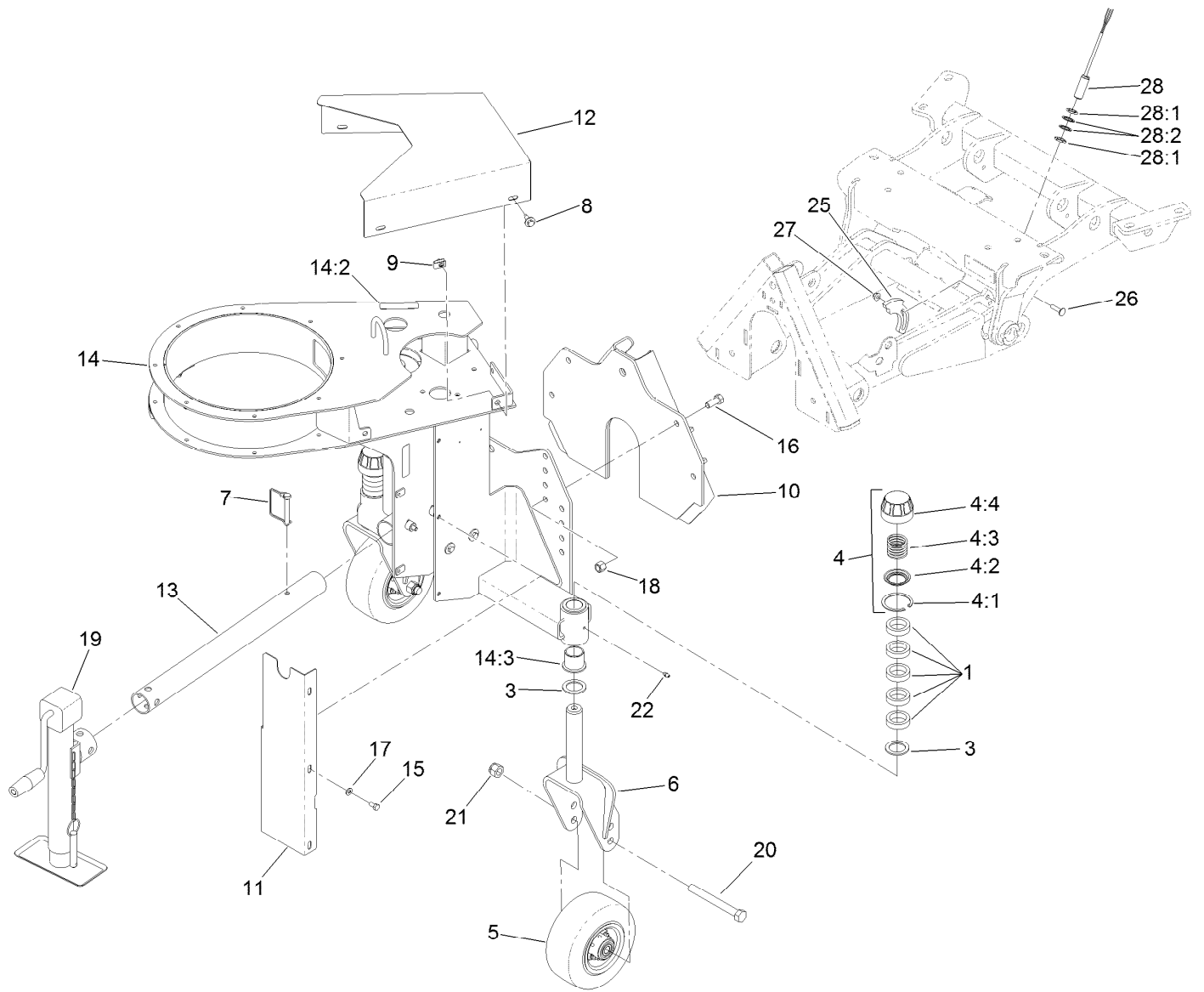
STD: standard

TAP: self tapping

TTH: torx truss head

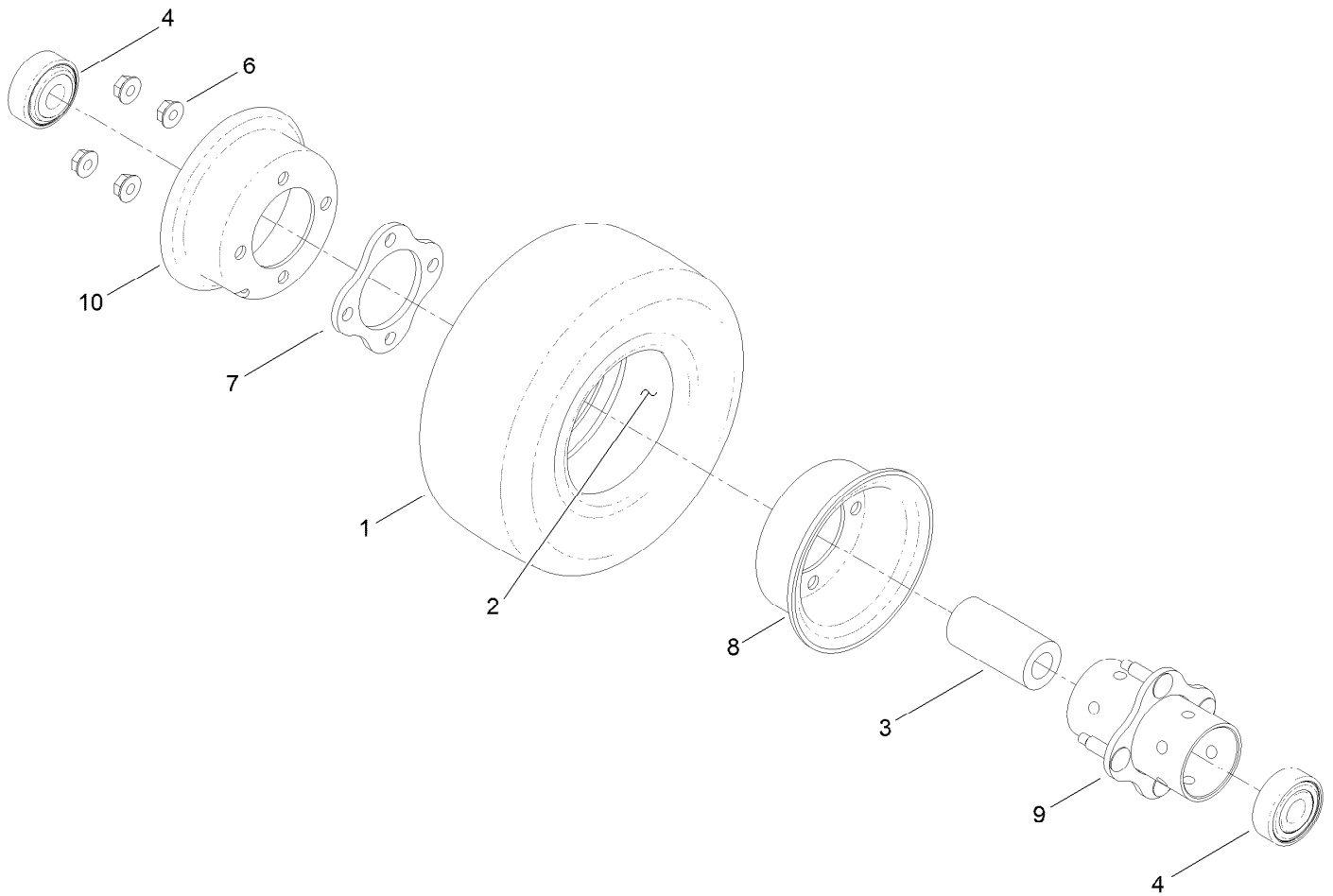
Contents

Frame and Cover Assembly	4
Wheel Assembly No. 93-9938	5
Nozzle Assembly	6
Hydraulic Motor Assembly No. 99-0156	7
Turbine Drive Assembly	8
Drive Shaft Assembly No. 121-5322	9
Turbine Assembly No. 127-6277	10



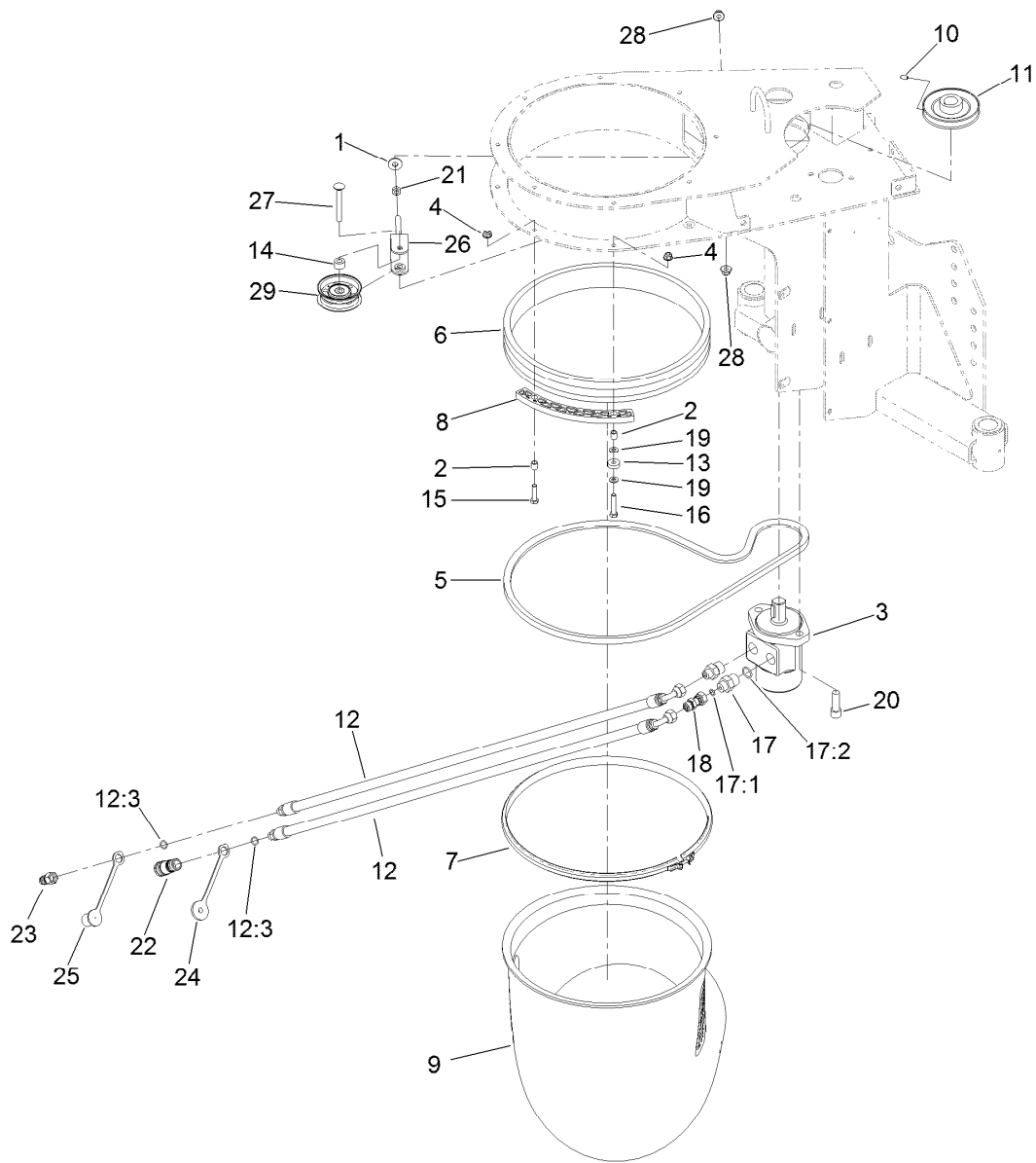
Frame and Cover Assembly

Ref.	Part Number	Qty.	Description	Ref.	Part Number	Qty.	Description
1	69-1510	10	Spacer	14:2	119-0217	2	Decal-Danger
3	69-6860	4	Washer-Thrust	14:3	69-6470	4	Bushing-Castor
4	92-8862	2	HOC Cap ASM	15	322-2	5	Screw-HH
4:1	92-5581	1	Ring-Retaining	16	325-5	4	Screw-HH
4:2	92-5583	1	Washer-Cap	17	3256-23	5	Washer-Flat
4:3	92-5584	1	Spring-Compression	18	3296-23	4	Nut-Lock, NI
4:4	92-8861	1	Cap-HOC	19	T0000-3423	1	Jack-Sidewind
5	93-9938	2	Wheel ASM	20	327-24	2	Screw-HH
6	104-0762-01	2	Fork-Castor	21	3296-53	2	Nut-Lock, NI
7	107-7400	1	Pin-Snapper	22	302-5	2	Fitting-Grease
8	114-8418	5	Screw-HWH, Sems	25	125-4288	1	Plate-Sensor
9	115-7721	5	Nut-Clip, U	26	3230-3	2	Screw-CARR
10	121-9922-03	1	Plate-Mounting	27	104-8300	2	Nut-Flange, NI
11	121-9926-03	1	Cover-Case, Gear	28	115-5300	1	Proximity Switch ASM
12	121-9987-03	1	Cover-Belt	28:1	117-3207	2	Nut-Hex
13	125-4221-03	1	Tube-Stand	28:2	117-3208	2	Washer-Lock, Internal Tooth
14	125-4228	1	Blower Frame ASM				



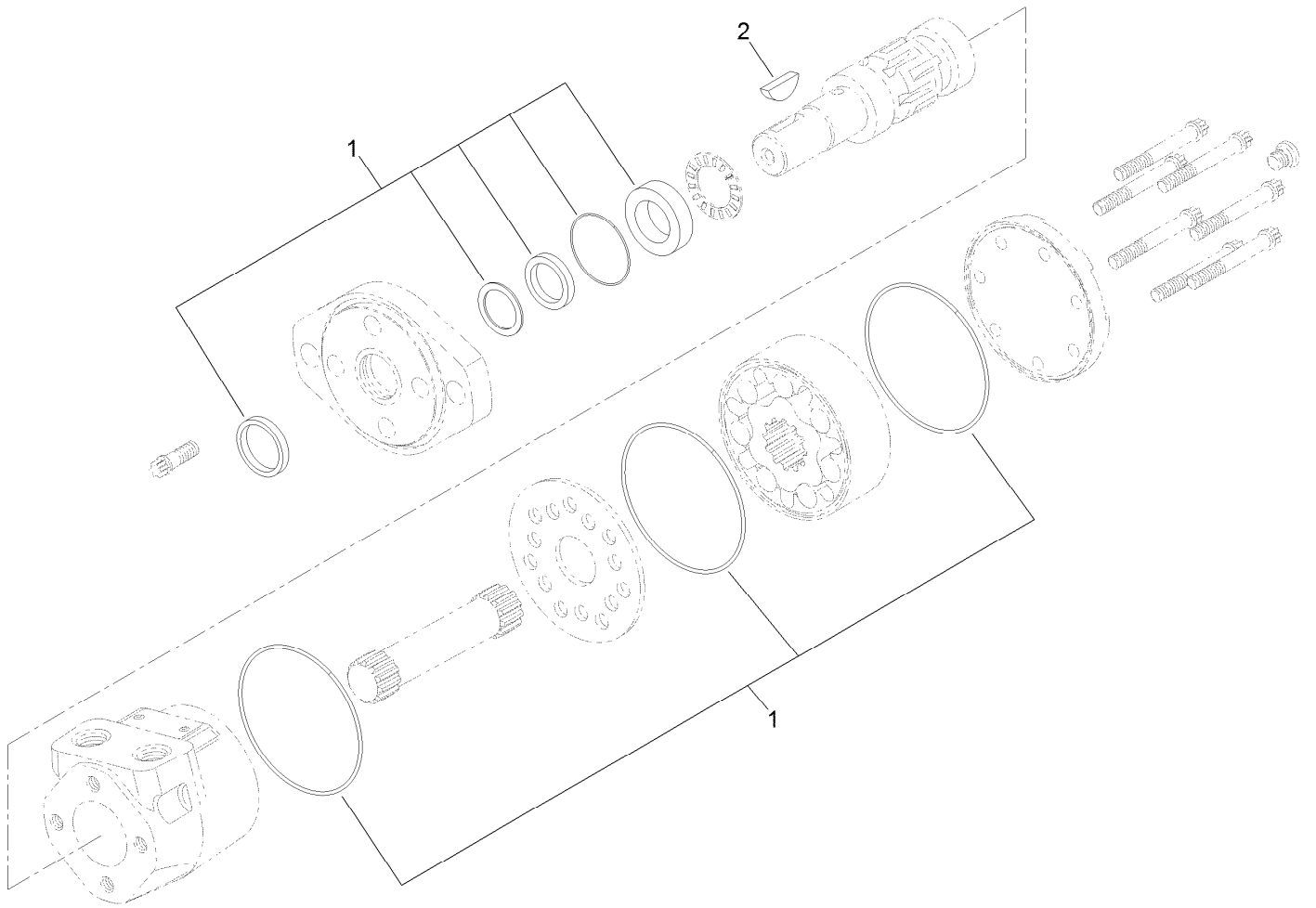
Wheel Assembly No. 93-9938

<i>Ref.</i>	<i>Part Number</i>	<i>Qty.</i>	<i>Description</i>
1	93-9939	1	Tire
2	68-8950	1	Tube-Inner (W/Valve)
3	93-4241	1	Spacer-Bearing, Inner
4	120-3366	2	Bearing
6	32128-16	4	Nut-HHF
7	93-4242	1	Plate
8	93-4239	1	Rim-Wheel, Half
9	93-5980	1	Hub
10	95-2741	1	Rim-Wheel, Half



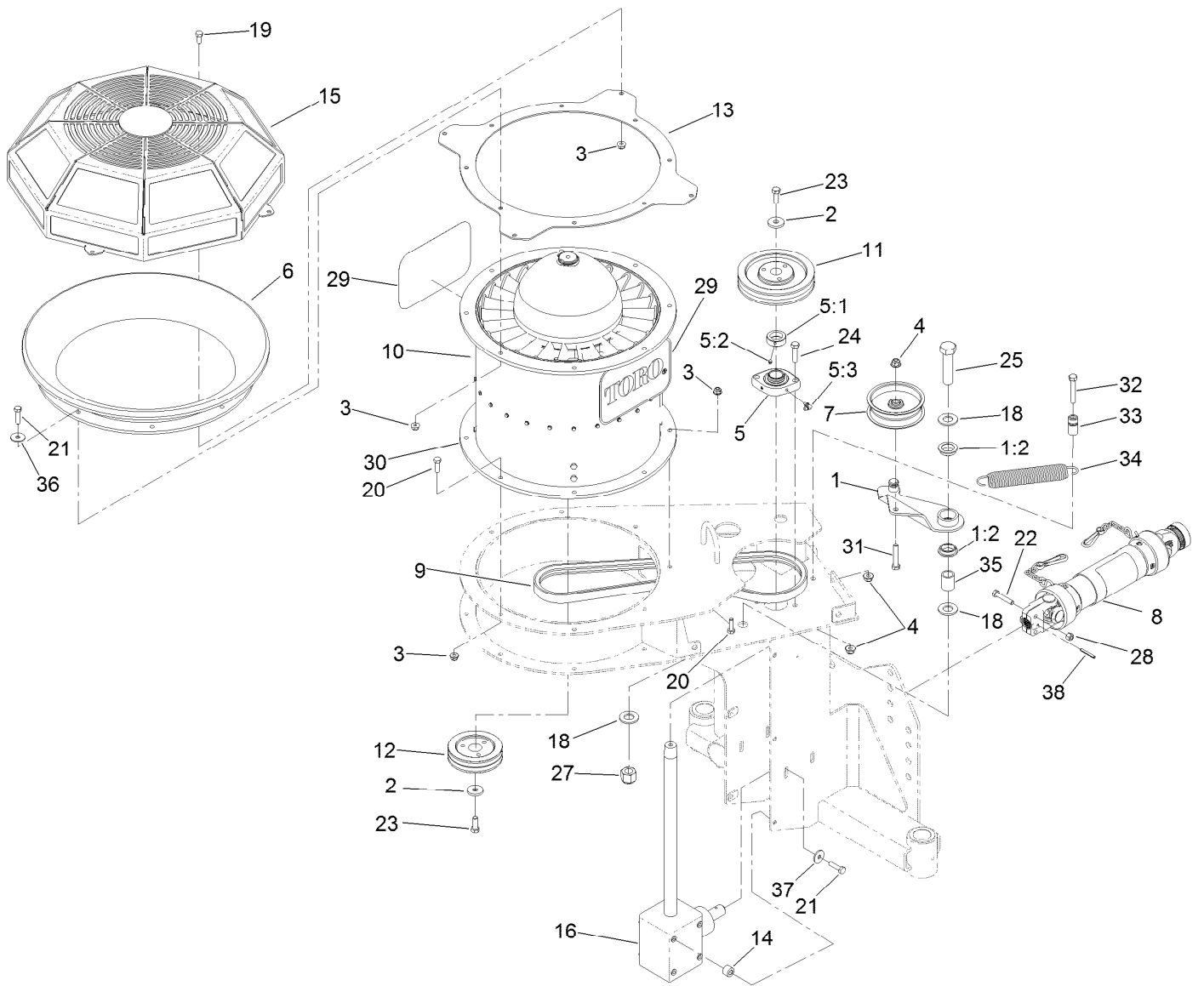
Nozzle Assembly

Ref.	Part Number	Qty.	Description	Ref.	Part Number	Qty.	Description
1	80-6990	1	Washer-Hardened	16	322-8	3	Screw-HH
2	93-6859	8	Spacer	17	340-141	2	Fitting-HYD, Straight
3	99-0156	1	HYD Motor ASM	17:1	237-22	1	O-Ring
4	104-8300	8	Nut-Flange, NI	17:2	237-80	1	O-Ring
5	57-4740	1	V-Belt	18	125-4278	1	Fitting
6	112-1874	1	Pulley-Nozzle	19	3256-74	6	Washer-Flat
7	112-6899	1	Clamp-Nozzle	20	3274-4	2	Screw-HSH
8	114-9868	4	Guide-Nozzle	21	3217-7	1	Nut-Hex
9	125-4279	1	Nozzle	22	63-1220	1	Coupler-Disconnect, Quick
10	3245-9	2	Screw-Set, HSH	23	63-1240	1	Nipple-Disconnect, Quick
11	125-4281	1	Pulley-Drive	24	353-984	1	Plug-Dust
12	125-4239	2	HYD-Hose	25	353-985	1	Cap-Dust
12:3	237-42	1	O-Ring	26	125-4259-03	1	Bracket-Idler
13	251-259	3	Bearing-Ball	27	109-6868	1	Bolt-Carriage
14	125-4264	1	Spacer-Pulley	28	104-8301	2	Nut-Flange, NI
15	322-6	5	Screw-HH	29	1-323285	1	Pulley-Idler, Flat



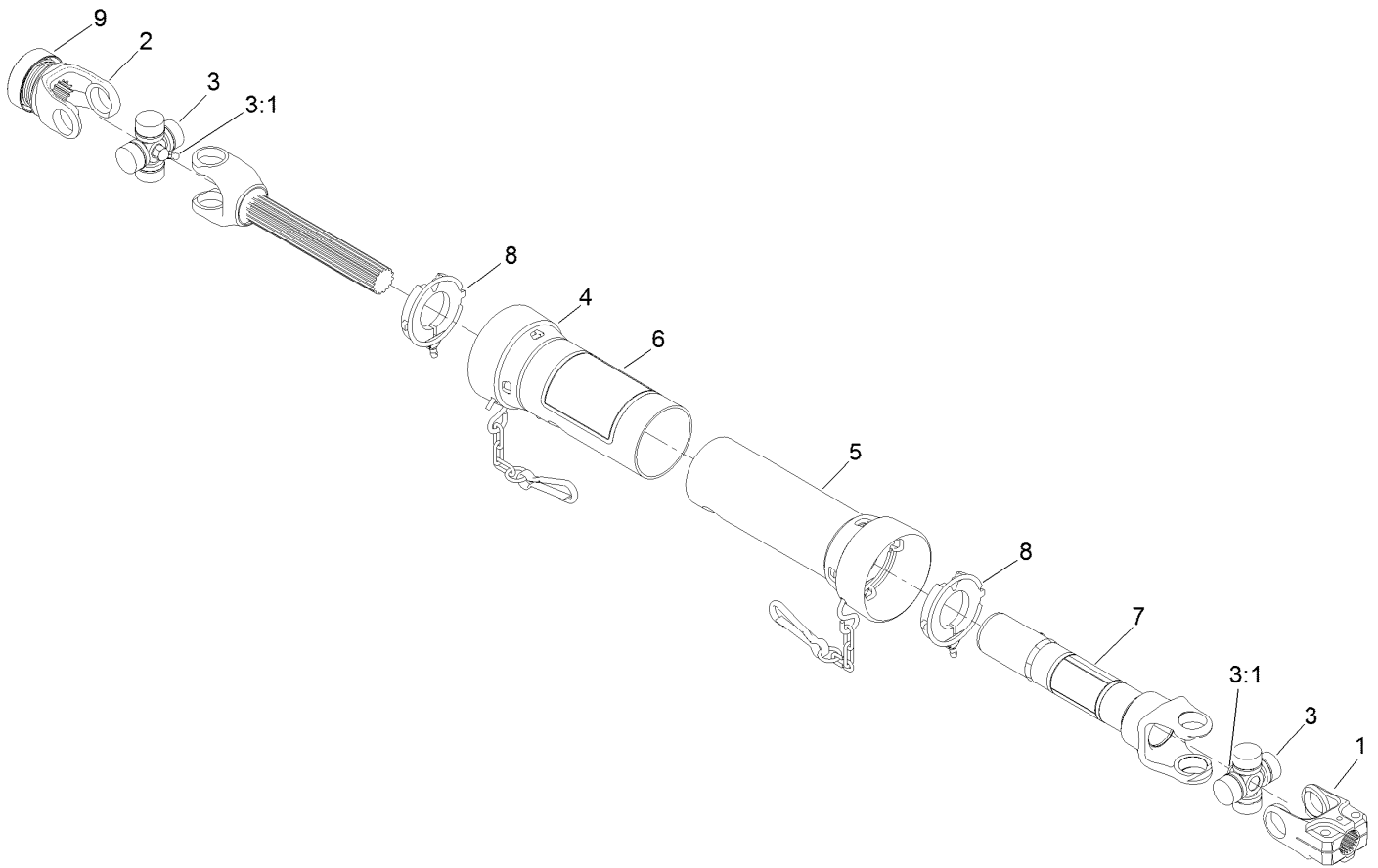
Hydraulic Motor Assembly No. 99-0156

<i>Ref.</i>	<i>Part Number</i>	<i>Qty.</i>	<i>Description</i>
1	100-1446	1	Seal Kit
2	3257-8	1	Key-Woodruff



Turbine Drive Assembly

Ref.	Part Number	Qty.	Description	Ref.	Part Number	Qty.	Description
1	130-0860	1	Idler Arm ASM	18	92-5836	3	Washer
1:2	98-2197	2	Bushing-Flange	19	322-3	4	Screw-HH
2	99-2098	2	Washer	20	322-5	8	Screw-HH
3	104-8300	20	Nut-Flange, NI	21	322-6	12	Screw-HH
4	104-8301	4	Nut-Flange, NI	22	322-9	2	Screw-HH
5	92-8799	1	Bearing-Flange	23	323-6	2	Screw-HH
5:1	251-77	1	Collar-Lock, Bearing	24	323-8	2	Screw-HH
5:2	3245-35	1	Screw-Set, HSH	25	328-4	1	Screw-HH
5:3	302-40	1	Fitting-Grease	27	3296-51	1	Nut-Lock, NI
6	117-8329	1	Bell-Inlet	28	3296-29	2	Nut-Lock, NI
7	119-7887	1	Pulley-Idler	29	62-7400	2	Decal
8	121-5322	1	Drive Shaft ASM	30	115-5102	1	Decal
9	121-9924	1	Belt-Drive	31	323-10	1	Screw-HH
10	127-6277	1	Turbine ASM	32	323-11	1	Screw-HH
11	121-9957	1	Pulley-Drive	33	125-4275	1	Post-Spring
12	121-9958	1	Pulley-Driven	34	103-6532	1	Spring, Extension
13	127-6302-03	1	Bracket-Fan	35	125-4276	1	Spacer-Idler
14	121-9992	4	Spacer-Gearbox	36	5-4460	8	Washer-Pivot
15	127-6329-03	1	Guard-Fan	37	115-7109	4	Washer-Flat
16	125-4226	1	Gearbox ASM	38	32121-34	1	Pin-Roll



Drive Shaft Assembly No. 121-5322

<i>Ref.</i>	<i>Part Number</i>	<i>Qty.</i>	<i>Description</i>
1	54-9040	1	Yoke-End
2	103-9329	1	Yoke-Quick Disconnect
3	112-1687	2	Cross And Bearing Kit
3:1	62-3820	1	Fitting-Grease
4	125-4294	1	Outer Guard ASM (W/Decal)
5	125-4295	1	Inner Guard ASM
6	92-1581	1	Decal-Safety
7	92-1582	1	Decal-Safety
8	125-4296	2	Guard Repair Kit
9	125-4297	1	Spring-Lock Repair Kit

Notes:



Count on it.