



Deluxe Seat Kit Z Master® Riding Mower

Model No. 121-7595

Model No. 78550

Installation Instructions

Installation

Loose Parts

Use the chart below to verify that all parts have been shipped.

Procedure	Description	Qty.	Use
1	No parts required	–	Remove the seat.
2	Seat Spacer Flange nut (5/16 inch) Plastic cable tie	1 4 4 4	Install the seat.
3	No parts required	–	Test the safety interlock system.

Note: For performance and safety, 2000 Series machines with 48 inch mower decks require a weight kit (No. 121-7576) after the deluxe seat kit is installed. Obtain the correct weight kit from an Authorized Service Dealer.

1

Removing the Seat

No Parts Required

Removing a 2000 Series Z Master Mower Seat

- To expose the front nuts, move the seat to the furthest rear position.
- Loosen the front nuts. The nuts do not need to be removed.
- To expose the rear nuts, move the seat to the furthest forward position.
- Loosen the rear nuts. The nuts do not need to be removed.
- Slide the seat and seat plate forward to allow the front nuts to go through the key holes (Figure 1).
- Remove the seat and base from the machine.

- Unplug the harness connector from the seat switch located under the seat.

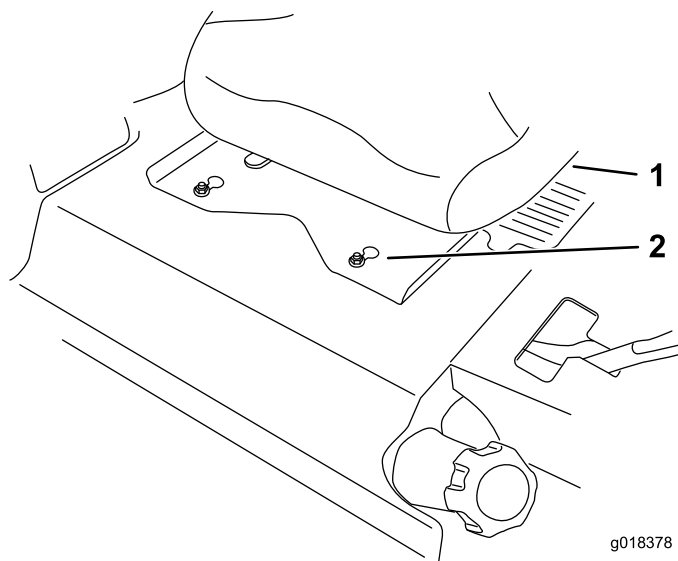


Figure 1

- Existing seat
- Front nuts with key hole



Removing a 5000 or 6000 Series Z Master Mower Seat (Tilting Seat)

1. Unlatch the seat and tip the seat forward.
2. Remove the nuts holding the seat to the seat frame (Figure 2).
3. Disconnect the wire harness from the seat switch.
4. Remove the seat from the frame.

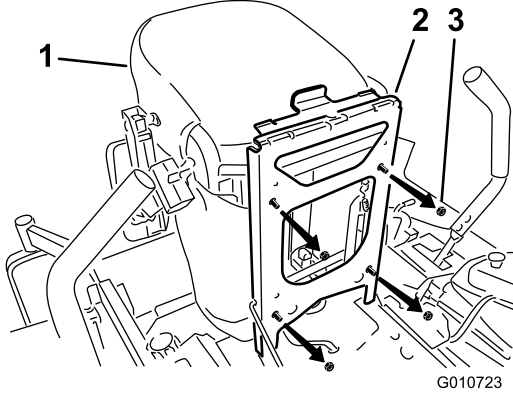


Figure 2

- | | |
|---------------|--------|
| 1. Seat | 3. Nut |
| 2. Seat frame | |

Removing a 3000 Series or International 5000 and 6000 Series Z Master Mower Seat (Fixed Seat)

1. For international machines only, remove the hydraulic unit shroud from the machine (Figure 4). Save hardware and shroud.

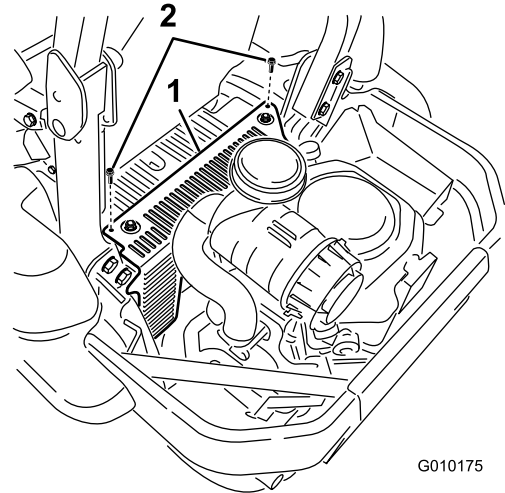


Figure 4

- | | |
|--------------------------|----------|
| 1. Hydraulic unit shroud | 2. Bolts |
|--------------------------|----------|

Removing a 7000 Series Z Master Mower Seat

1. Unlatch the seat and tip the seat forward.
2. Remove the nuts holding the seat to the seat frame (Figure 3). Retain the nuts.
3. Remove the seat from the frame.

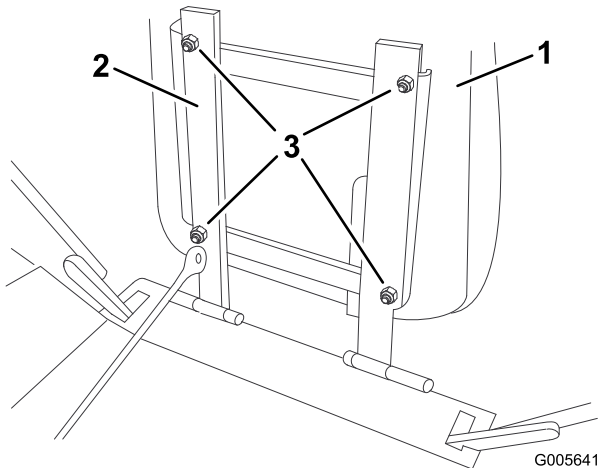


Figure 3

- | | |
|---------------|--------|
| 1. Seat | 3. Nut |
| 2. Seat frame | |

2. Remove the 4 flange nuts holding the seat to the machine (Figure 5).
3. Unplug the harness connector from the seat switch located under the seat towards the front (Figure 5).

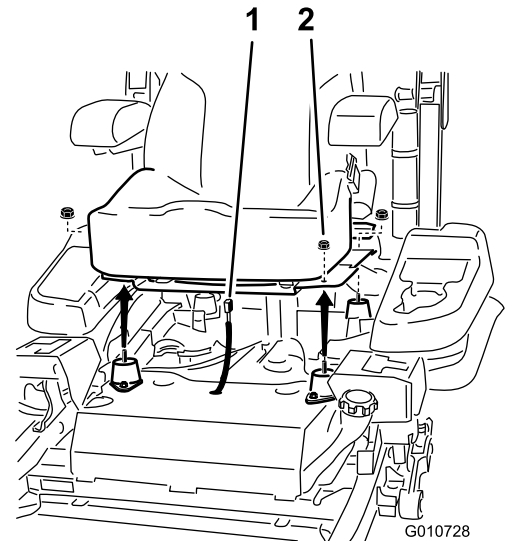


Figure 5

- | | |
|----------------------|----------------|
| 1. Harness connector | 2. Flange nuts |
|----------------------|----------------|

4. Remove the seat plate from the seat by removing the 4 spacers and 4 flange nuts (Figure 6).

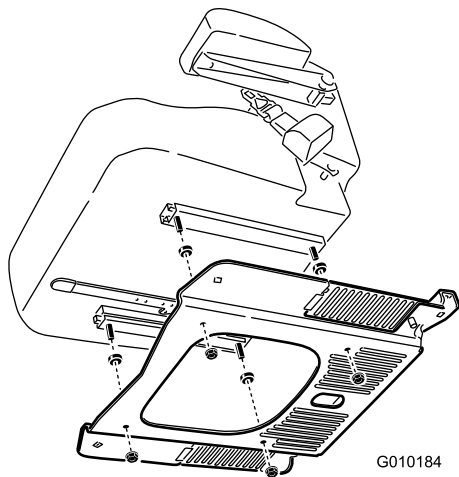


Figure 6

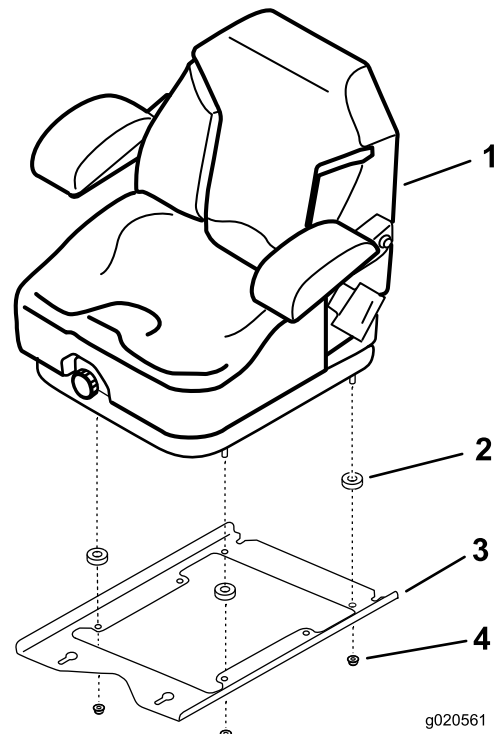


Figure 7

- | | |
|-------------|---------------|
| 1. New seat | 3. Seat frame |
| 2. Spacer | 4. Nut |

2

Installing the Seat

Parts needed for this procedure:

1	Seat
4	Spacer
4	Flange nut (5/16 inch)
4	Plastic cable tie

Installing a 2000 Series Z Master Mower Seat

1. Remove the plastic packing covers guarding the seat studs.
 2. Install a spacer onto each seat stud (Figure 7).
 3. Secure the seat frame to the seat with 4 flange nuts (5/16 inch) (Figure 7).
 4. Torque the nuts to 30.5 N-m (22.5 ft-lb).
-
5. Plug the harness connector into the seat switch located under the seat towards the front (Figure 13).
 6. Carefully lower the seat down and ensure the harness does not get pinched.
 7. Install the plastic ties to prevent the wire harness from being pinched.
 8. Install the seat to the machine frame by aligning the front nuts with the key hole in the seat plate.
 9. Slide the seat and seat plate rearward to lock the front nuts into the key hole and the rear nuts into the slots (Figure 1).
 10. Torque the nuts to 47.5 N-m (35 ft-lb).

Installing a 5000 or 6000 Series Z Master Mower Seat (Domestic Only)

1. Tilt the seat frame up.
2. Remove the plastic packing covers guarding the seat studs.
3. Install a spacer onto each seat stud (Figure 8).

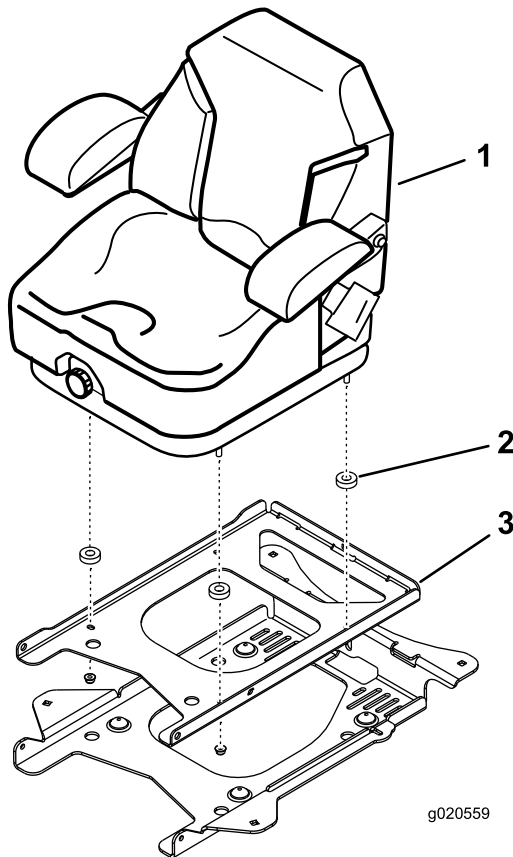


Figure 8

1. New seat
2. Spacer
3. Seat frame

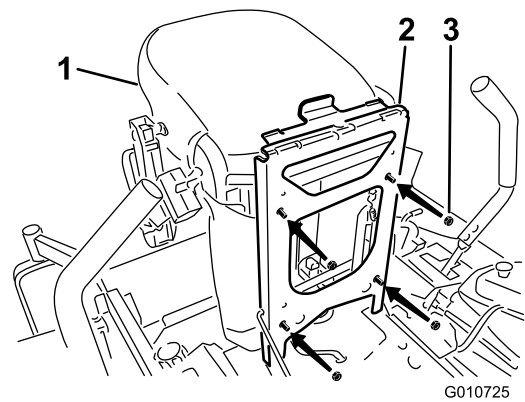


Figure 9

1. Seat
2. Seat frame
3. Flange nut (5/16 inch)

7. Plug the harness connector into the seat switch located under the seat (Figure 10).

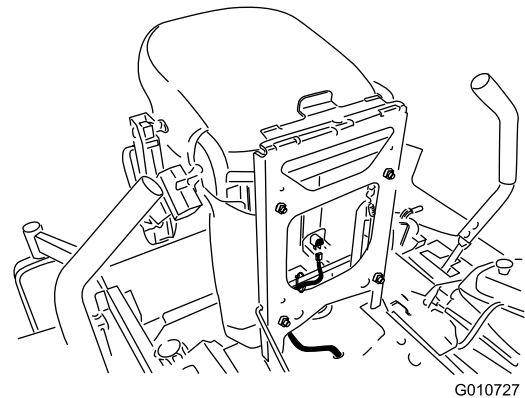


Figure 10

8. Carefully lower the seat down and ensure the harness does not get pinched.
9. Move the seat to the furthest rear position.
10. Install the plastic ties to prevent the wire harness from being pinched.

Installing a 7000 Series Z Master Mower Seat

1. Tilt the seat frame up.
2. Install a spacer onto each seat stud (Figure 11).

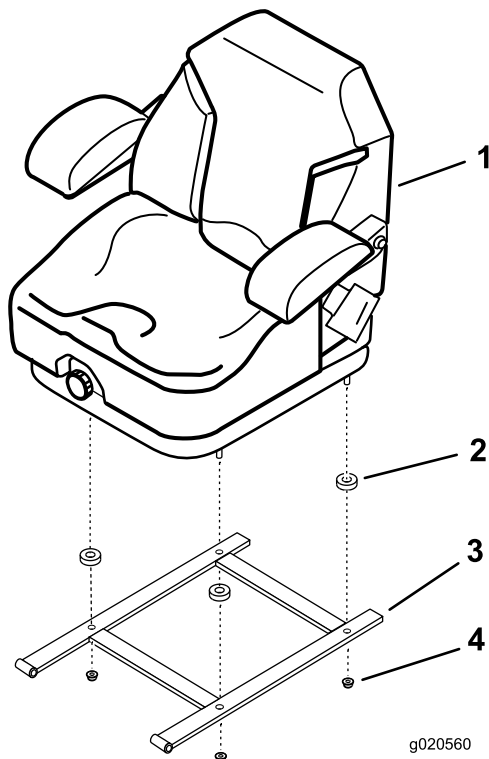


Figure 11

- | | |
|-------------|---------------------------|
| 1. New seat | 3. Seat frame |
| 2. Spacer | 4. Flange nut (5/16 inch) |

3. Install the seat to the seat frame with 4 flange nuts (5/16 inch) (Figure 11).
4. Plug the harness connector into the seat switch located under the seat towards the front.
5. Carefully lower the seat down and ensure the harness does not get pinched.
6. Move the seat to the furthest rear position.
7. Install the plastic ties to prevent the wire harness from being pinched.

Installing a 3000 Series or International 5000 and 6000 Series Z Master Mower Seat

1. Remove the plastic packing covers guarding the seat studs.
2. Install a spacer (Figure 12).
3. Secure the seat to the seat frame with 4 flange nuts (5/16 inch) (Figure 12)
4. Torque the nuts to 22.5 ft.-lb. (30.5 N-m).

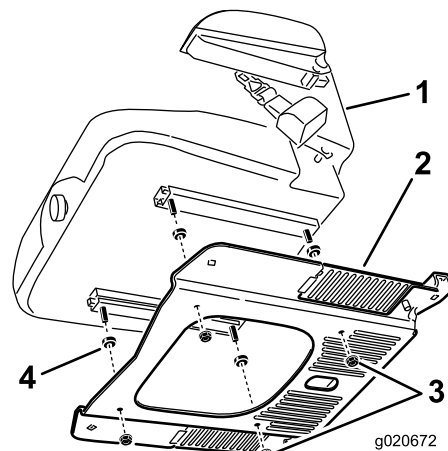


Figure 12

- | | |
|---------------|---------------------------|
| 1. Seat | 3. Flange nut (5/16 inch) |
| 2. Seat plate | 4. Spacer |

5. Plug the harness connector into the seat switch located under the seat towards the front.
6. Carefully lower the seat down and ensure the harness does not get pinched.
7. Move the seat to the furthest rear position.
8. Ensure the harness does not get pinched.
9. Install the plastic ties to prevent the wire harness from being pinched.
10. Install the seat to the machine frame with the previously removed nuts (Figure 13).
11. Torque the nuts to 47.5 N-m (35 ft.-lb.).

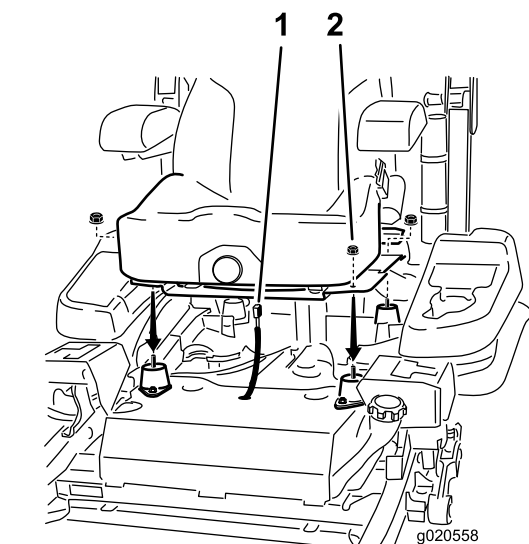


Figure 13

- | | |
|----------------------|---------------------------|
| 1. Harness connector | 2. Flange nuts (3/8 inch) |
|----------------------|---------------------------|

12. For international machines only, install the hydraulic unit shroud to the machine (Figure 14).

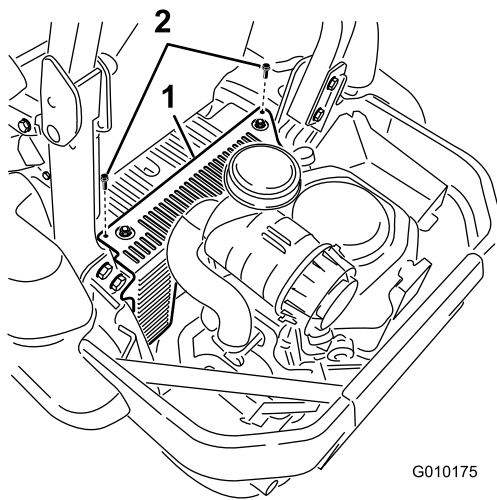


Figure 14

1. Hydraulic unit shroud 2. Bolts

component is in the correct position, a triangle will light up in the corresponding square.

Test the safety interlock system before you use the machine each time. If the safety system does not operate as described below, have an Authorized Service Dealer repair the safety system immediately.

1. Sitting on the seat, engage the parking brake and move the blade control switch (PTO) to on. Try starting the engine; the engine should not crank.
2. Sitting on the seat, engage the parking brake and move the blade control switch (PTO) to off. Move either motion control lever (out of neutral locked position). Try starting the engine; the engine should not crank. Repeat for other control lever.
3. Sitting on the seat, engage the parking brake, move the blade control switch (PTO) to off and move the motion control levers to neutral lock position. Now start the engine. While the engine is running, release the parking brake, engage the blade control switch (PTO) and rise slightly from the seat; the engine should stop.
4. Sitting on the seat, engage the parking brake, move the blade control switch (PTO) to off and move the motion control levers to neutral lock position. Now start the engine. While the engine is running, center either motion control and move (forward or reverse); the engine should stop. Repeat for other motion control.
5. Sitting on the seat, disengage the parking brake, move the blade control switch (PTO) to off and move the motion control levers to neutral lock position. Try starting the engine; the engine should not crank.

3

Testing the Safety Interlock System

No Parts Required

Procedure

⚠ CAUTION

If safety interlock switches are disconnected or damaged the machine could operate unexpectedly causing personal injury.

- Do not tamper with the interlock switches.
- Check the operation of the interlock switches daily and replace any damaged switches before operating the machine.

The safety interlock system is designed to prevent the engine from starting unless:

- The parking brake is engaged.
- The blade control switch (PTO) is disengaged.
- The motion control levers are in the neutral locked position

The safety interlock system also is designed to stop the engine when the traction controls are moved from the locked position with the parking brake engaged or if you rise from the seat when the PTO is engaged.

The hour meter has symbols to notify the user when the interlock component is in the correct position. When the

Operation

Positioning the Seat

The seat can move forward and backward. Position the seat where you have the best control of the machine and are most comfortable.

To adjust, move the lever sideways to unlock seat (Figure 15).

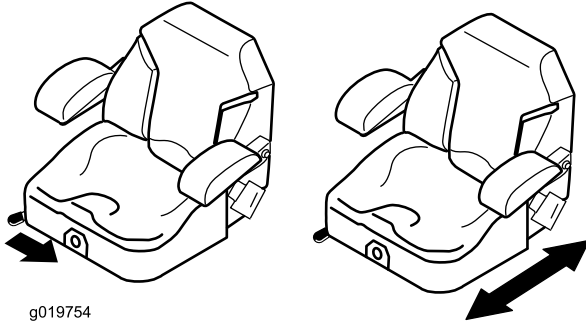


Figure 15

Changing the Seat Suspension

The seat is adjustable to provide a smooth and comfortable ride. Position the seat where you are most comfortable.

To adjust it, turn the knob in front either direction to provide the best comfort (Figure 16).

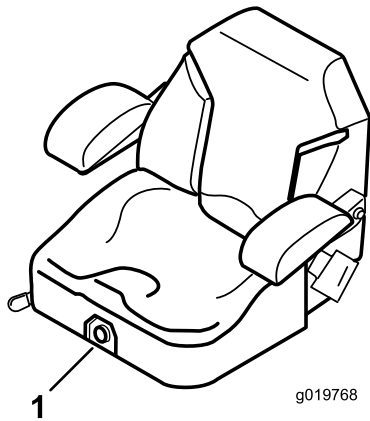


Figure 16

1. Seat suspension knob



Count on it.