



WASHOUT PORT KIT

PART NO. 95-3282

INSTALLATION
INSTRUCTIONS

Loose Parts

Note: Use the chart below to identify parts used for assembly.

DESCRIPTION	QTY.	USE
Fitting	1	Install washout fitting
O-ring	1	
Bolt 1/4-20 x 7/8" (22 mm)	2	
Washer 1/4" (19 mm)	2	
Nut (thin) 1/4"	2	
Hose connector	1	

Locate Fitting On Mower

- Shut off engine and wait for all moving parts to stop. Remove spark plug wire(s).

CAUTION

POTENTIAL HAZARD

- If you leave the wire on the spark plug, someone could start the engine.

WHAT CAN HAPPEN

- Accidental starting of engine could seriously injure you or other bystanders.

HOW TO AVOID THE HAZARD

- Pull wire off spark plug before you do any maintenance. Also push wire aside so it does not accidentally contact spark plug.

WARNING

POTENTIAL HAZARD

- Corroded or cracked mowers may be weakened or damaged by drilling to install washout fitting.

WHAT CAN HAPPEN

- A weakened mower can crack or break.
- Broken or missing pieces exposes you and others to thrown objects or blade contact.

HOW TO AVOID THE HAZARD

- Only install fitting on sound mowers.
- Replace all broken or cracked mowers immediately.
- Never put your hands or feet under the mower or through openings in the mower.

- Clean underside and examine integrity of mower.

- Attach coupling and fitting to hose (Fig. 1).

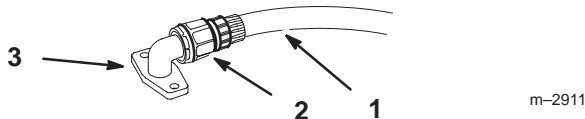


Figure 1

- 1. Hose
- 2. Coupling
- 3. Fitting

4. Select a location with the hose fitting assembly on left side of mower inside the preferred location diagram (Fig. 2 or 3).

Note: Hose should not interfere with wheels, handles or controls.

IMPORTANT: Location must be on a flat surface and not obstructing any decals.

IMPORTANT: Look under mower, location must be inside blade cutting circle away from any mulching baffles and not interfere with any other mower hardware.

Riding Mowers

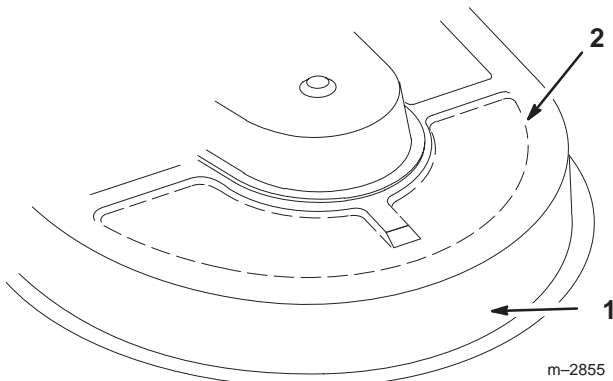


Figure 2

- 1. Left side of mower
- 2. — Preferred location

Walk-Behind Mowers

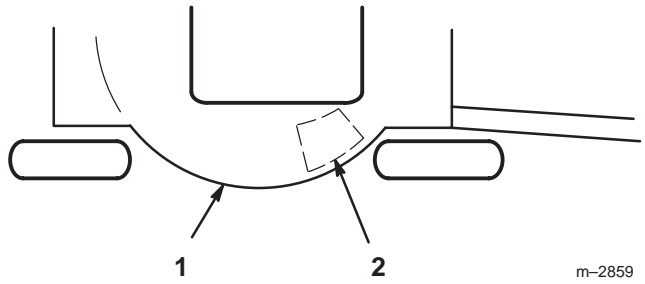


Figure 3

- 1. Left side of mower
- 2. — Preferred location

Mark and Drill Holes

5. Use fitting as a template and mark the location of two mounting holes (Fig. 4).
6. Place a straight edge between mounting holes and mark the center line (Fig. 4).
7. Measure half-way between mounting holes and mark water hole location (Fig. 4).
8. Center punch and drill two (2) 9/32" (8 mm) mounting holes and one (1) 3/8" (9.5 mm) water hole (Fig. 4).

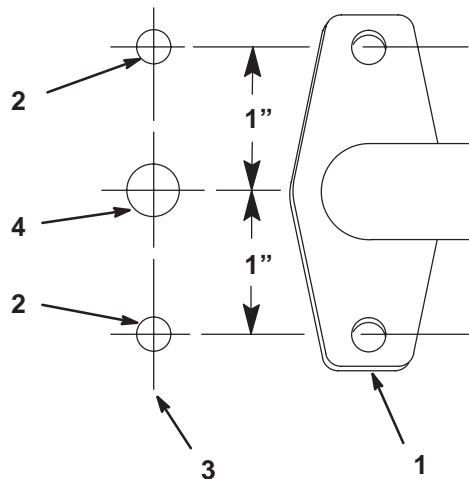


Figure 4

- 1. Fitting
- 2. Mounting holes 9/32" (8 mm)
- 3. Center line
- 4. Water hole 3/8" (9.5 mm)

Install Fitting

- Place fitting on mower facing outward, and secure with (2) 1/4–7/8" (22 mm) bolts, (2) 1/4" (7 mm) washers and (2) 1/4" nuts (Fig. 5 or 6).

Riding Mowers

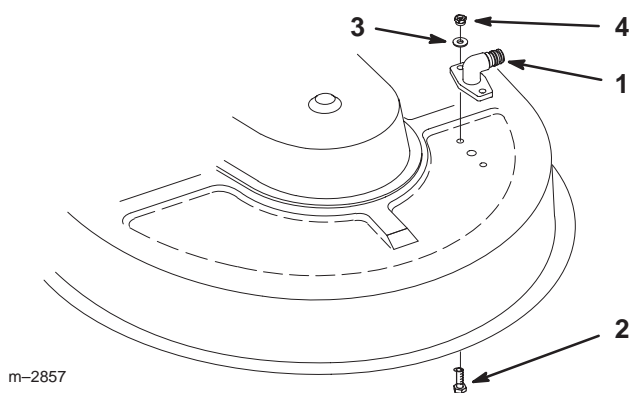


Figure 5

- | | |
|---------------------------|-----------------------|
| 1. Fitting | 3. Washer 1/4" (7 mm) |
| 2. Bolts 1/4–7/8" (22 mm) | 4. Nut 1/4" |

Walk-Behind Mowers

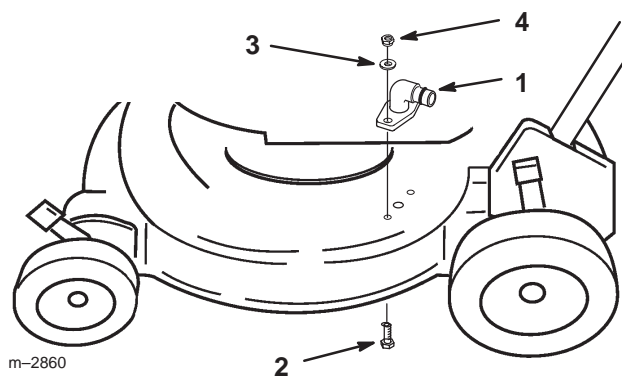


Figure 6

- | | |
|---------------------------|-----------------------|
| 1. Fitting | 3. Washer 1/4" (7 mm) |
| 2. Bolts 1/4–7/8" (19 mm) | 4. Nut 1/4" |

Washing Underside of Mower

After each use wash the underside of the mower to prevent grass build-up for improved mulch action and clipping dispersal.

- Park the machine on a hard level surface, disengage the power take off (PTO) and turn the ignition key to "OFF" to stop the engine.
- Attach coupling to the end of a garden hose and snap onto mower washout fitting, turn water on high (Fig. 7 or 8).
- Lower the mower to the lowest height-of-cut.
- Start the engine, refer to Operator's Manual for instructions. Engage blade or power take off (PTO) and let mower run for one to three minutes.

Note: The larger the mower the longer you may need to wash.

- Disengage the blade, power take off (PTO) and turn the ignition key to "OFF" to stop the engine. Wait for all moving parts to stop.
 - Turn the water off, remove coupling from the washout fitting and hose.
- Note:** If the mower is not clean after one washing, soak and let stand for 30 minutes. Then repeat process again.
- Run mower again for one to three minutes to remove excess water.

Riding Mowers

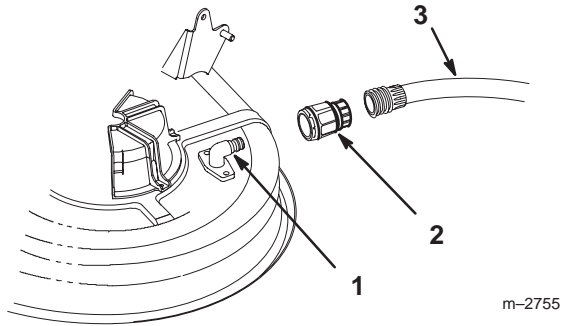


Figure 7

- 1. Washout fitting
- 2. Coupling
- 3. Hose

Walk-Behind Mowers

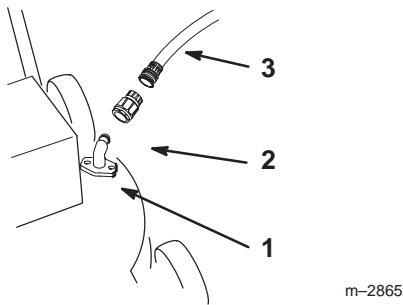


Figure 8

- 1. Washout fitting
- 2. Coupling
- 3. Hose

Maintenance

Spread petroleum jelly on washout fitting o-ring to make coupling slide on easier and protect o-ring.

WARNING

POTENTIAL HAZARD

- A broken or missing washout fitting could expose you and others to thrown objects or blade contact.

WHAT CAN HAPPEN

- Contact with thrown debris or blade contact will cause injury or death.

HOW TO AVOID THE HAZARD

- Replace broken or missing washout fitting immediately, before using mower again.
- Plug any hole(s) in mower with bolts and locknuts.
- Never put your hands or feet under the mower or through openings in the mower.