



# High-Lift Blade and Baffle Kit

## 2013 and After TimeMaster Lawn Mower

Model No. 127-6818

### Installation Instructions

**Important:** You will need a torque wrench to install the blades properly. If you do not have a torque wrench or are uncomfortable performing this procedure, contact an Authorized Service Dealer.

**Note:** Determine the left and right sides of the machine from the normal operating position.

#### ⚠ WARNING

#### CALIFORNIA Proposition 65 Warning

This product contains a chemical or chemicals known to the State of California to cause cancer, birth defects, or reproductive harm.

# 1

## Preparing the Machine

### No Parts Required

### Procedure

1. Lock the handle in the vertical position (Figure 1); refer to Adjusting the Handle Height in the *Operator's Manual*.

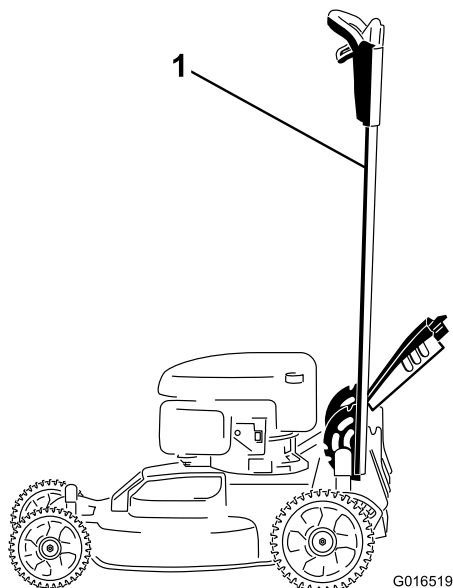


Figure 1

1. Handle locked in the vertical position

2. Tip the machine onto its side, with the dipstick down, until the upper handle rests on the ground.

#### ⚠ WARNING

The blades are sharp; contacting a blade could result in serious personal injury.

- Disconnect the wire from the spark plug.
- Wear gloves when servicing the blade.



# 2

## Removing the Existing Blades

### No Parts Required

### Procedure

1. Use a block of wood to hold each blade steady, and turn the blade bolt counterclockwise as shown in Figure 2.

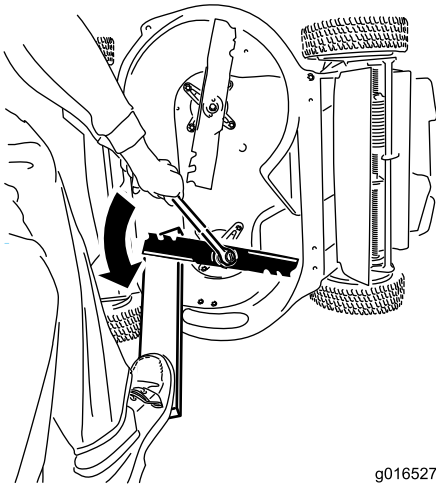


Figure 2

2. Remove each blade as shown in Figure 3.

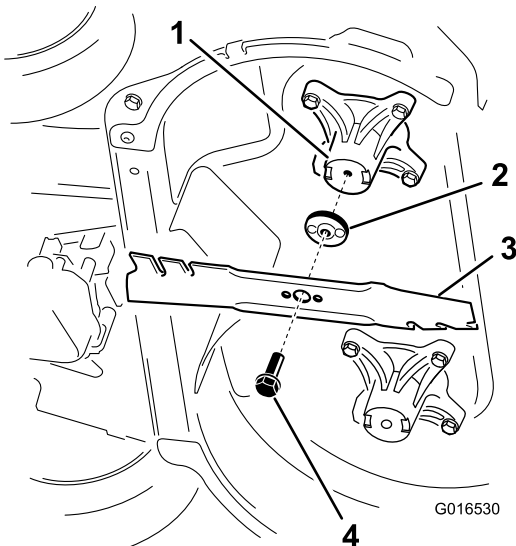


Figure 3

- |                     |                   |
|---------------------|-------------------|
| 1. Spindle (2)      | 3. Blade (2)      |
| 2. Blade driver (2) | 4. Blade bolt (2) |

# 3

## Installing the Baffle

### No Parts Required

### Procedure

1. Remove the 4 bolts and 4 nuts in the front of the machine housing (Figure 4).

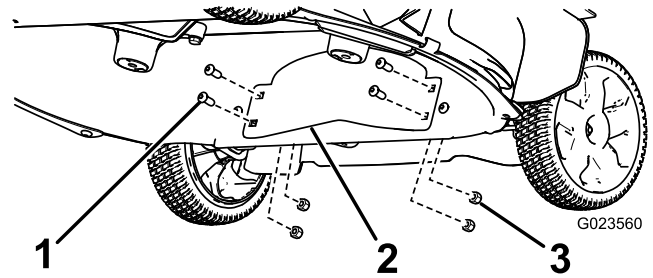


Figure 4

- |             |            |
|-------------|------------|
| 1. Bolt (4) | 3. Nut (4) |
| 2. Baffle   |            |

2. Install the baffle with the 4 bolts and 4 nuts that you removed in step 1 (Figure 4).

# 4

## Installing the High-lift Blades

### No Parts Required

### Procedure

1. Install the first blade so that it is horizontal, along with all mounting hardware as shown in Figure 3.

**Note:** Tighten the bolt with your fingers.

**Important:** Position the curved ends of the blades to point toward the machine housing. Be sure to nest the raised areas on each blade driver with the recesses in the head of its corresponding spindle, and the pins on the other side of each blade driver with the holes in its corresponding blade.

2. Steady each blade with a block of wood, and turn the blade bolt clockwise with a torque wrench as shown in Figure 5; torque the blade bolt to 60 ft-lb (82 N-m).

**Important:** A bolt torqued to 60 ft-lb (82 N-m) is very tight. Put your weight behind the wrench and tighten the bolt securely. This bolt is very difficult to overtighten.

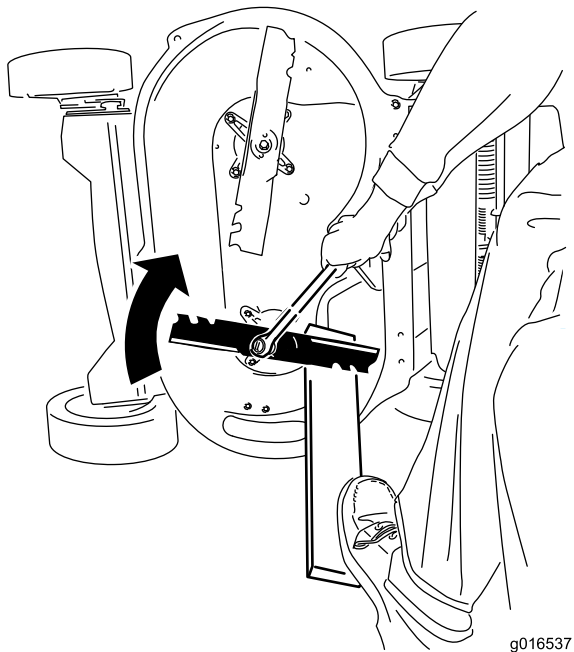


Figure 5

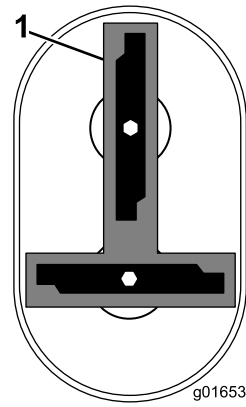


Figure 6

1. Blade (2)

4. Tighten the second blade; refer to step 2.
5. Rotate the blades by hand a full 360° turn to ensure that they do not touch.

**Note:** If the blades touch each other, they are not mounted correctly. Repeat steps 1 through 3 until the blades no longer touch each other.

### **▲ WARNING**

Incorrectly installing the blades could damage the machine or cause an injury to the operator or to bystanders.

3. Rotate the installed blade 1/4 turn until it is vertical, and install the other blade in the same manner as the first (refer to step 1).

**Note:** The blades should be perpendicular, forming an inverted “T” as shown in Figure 6.



**Count on it.**