



Count on it.

Parts Catalog

Versa Vac

Model No. 07053—Serial No. 31000001 and Up



Ordering Replacement Parts

To order replacement parts, please supply the part number, the quantity, and the description of each part desired.

Understanding Reference Numbers

Each identified part in an illustration has a reference number. The reference number for a part also appears in the parts list, along with other information about the part.

This catalog uses two special reference number formats, one to indicate parts in a service assembly and another to indicate the quantity of a given part in an illustration.

Service Assembly Reference Numbers

Parts in service assemblies have reference numbers in the form a:b. The a represents the reference number of the entire service assembly and the b represents a sequential number unique to each part within the service assembly.

For example, a wheel assembly might be identified by reference number 6, the tire by 6:1, the valve by 6:2, and the wheel by 6:3. When you order the assembly identified by reference number 6, you receive all parts identified by reference numbers 6:1, 6:2, and 6:3. However, you may also order any part individually. Reference numbers of this type appear in illustration and in parts lists.

Reference Numbers Indicating Quantity

In an illustration, if a reference number indicates more than one part, the reference number has the form nX y. The n represents the quantity of the part, the X is the multiplication symbol, and the y represents the reference number.

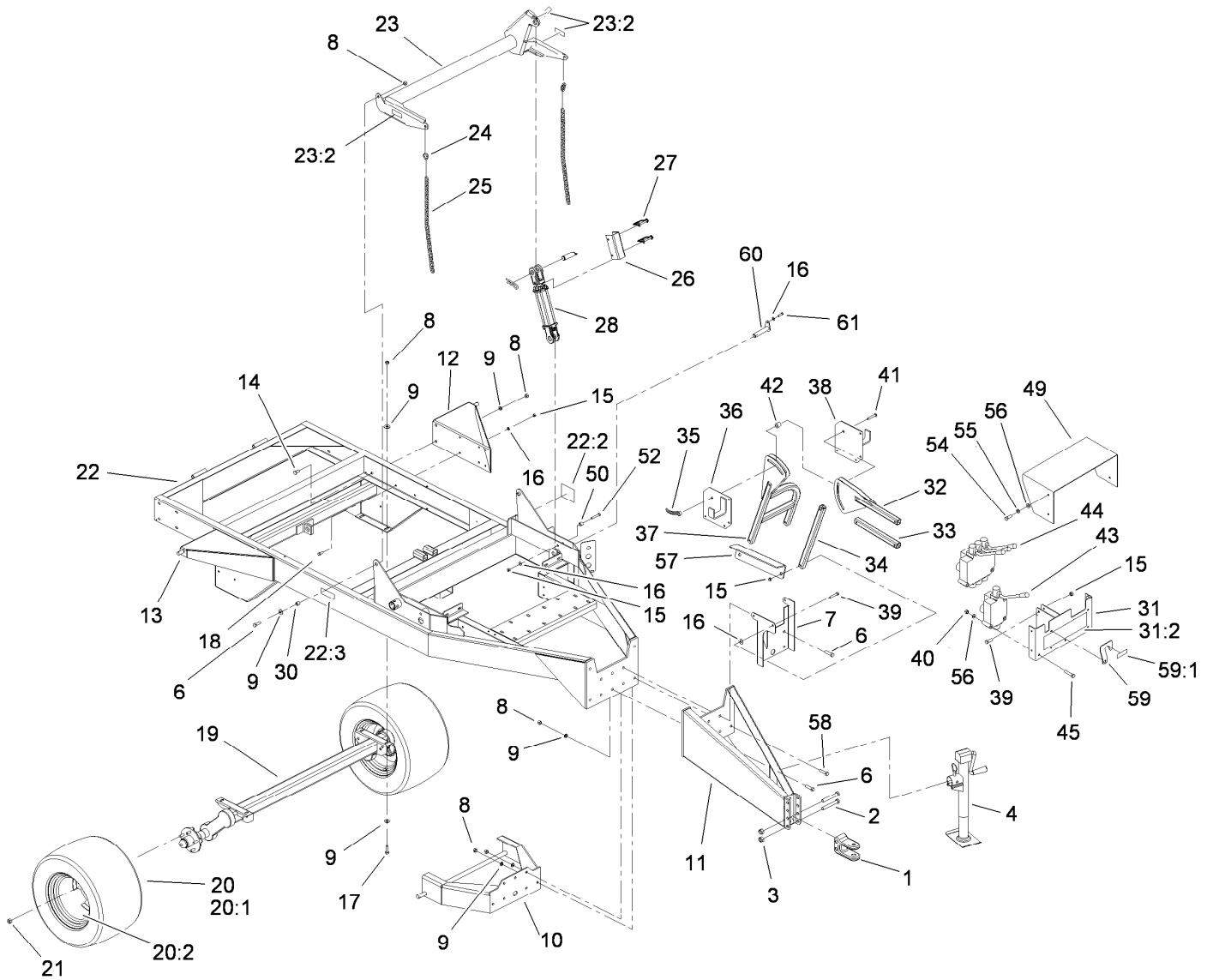
For example, in an illustration, the reference number 2X 37 means that two of the parts identified by reference number 37 are indicated.

List of Abbreviations

AR: as required	HLH: hex lag head	PTO: power-take-off
ASM: assembly	HOC: height-of-cut	RH: right hand
BBC: blade brake control	HSBH: hex socket button head	ROPS: roll-over protection system
BHTF: button head thread forming	HSFH: hex socket flat head	RRB: rear roller brush
CARR: carriage	HSH: hex socket head	SFH: slotted fillister head
CCW: counter clockwise	HWH: hex washer head	SHH: slotted hex head
CW: clockwise	HWHTF: hex washer head thread forming	SHWH: slotted hex washer head
DEG: degrees	HYD: hydraulic	SPH: slotted pan head
DPA: Dual Point Adjustment	LH: left hand	SQH: square head
ECM: electronic control module	LP: Liquefied Petroleum Gas	SRH: slotted round head
EXT: external	LPG: Liquefied Petroleum Gas	STD: standard
FH: flat head	NI: nylon insert	TAP: self tapping
GA: gauge	NPTF: national pipe thread fine	TTH: torx truss head
HD: heavy-duty	PFH: phillips flat head	
HF: hex flange	PPH: phillips pan head	
HH: hex head	PPHTF: phillips pan head thread forming	
HHF: hex head flange	PRH: phillips round head	
HHFTF: hex head flange thread forming	PTH: phillips truss head	
HJ: hex jam		

Contents

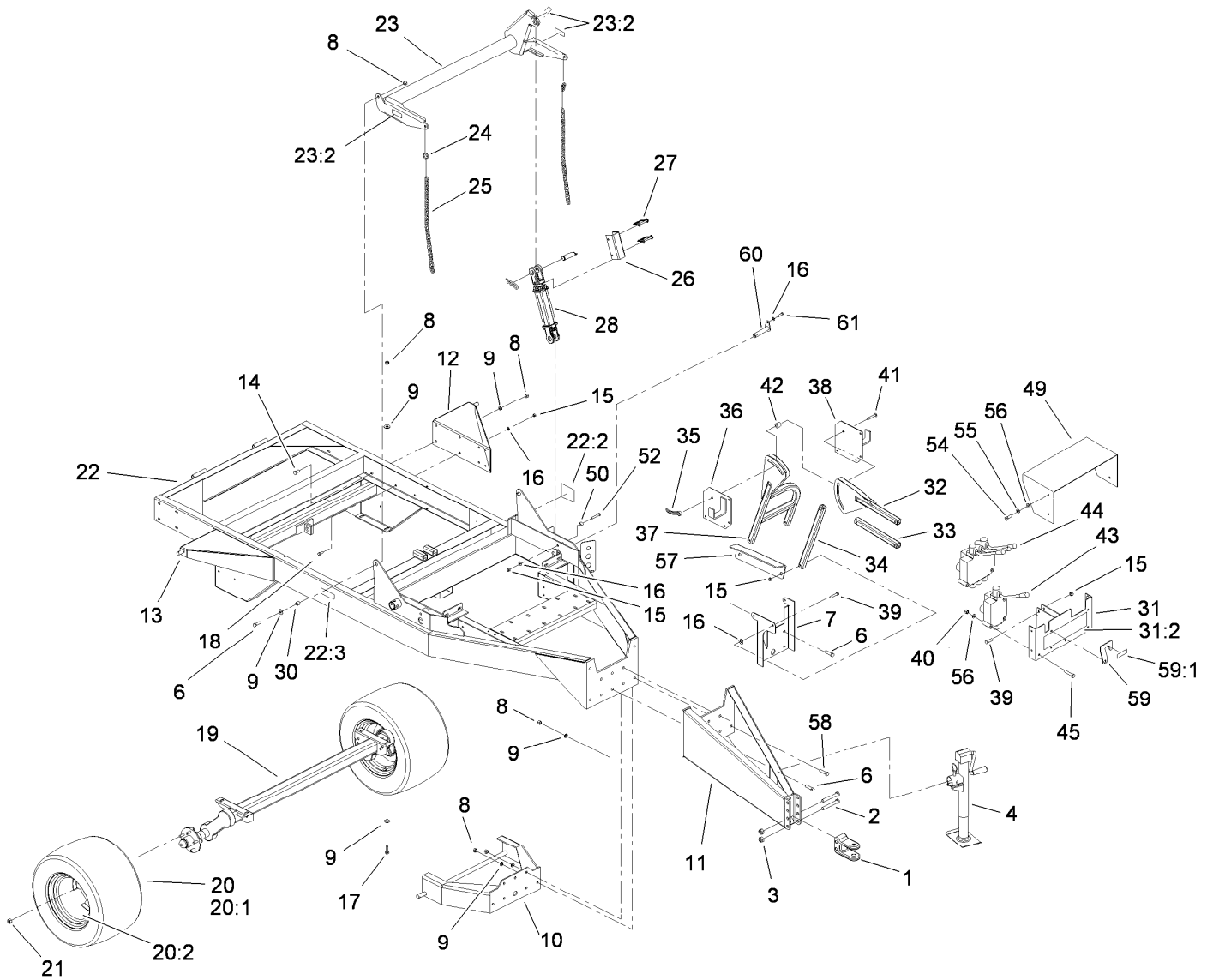
Frame and Axle Assembly	4
Hydraulic Cylinder Assembly No. 107-1180	6
Impeller Assembly	7
Drive Assembly	8
Hydraulic Double Gear Pump Assembly No. 108-0856	10
Power-Take-Off Shaft and Shield Assembly	11
Double Power-Take-Off Shaft Assembly No. SVA10500	12
Sidewall Assembly	13
Left Hand Sidewall Assembly	14
Right Hand Sidewall Assembly	15
Door Assembly	16
Lower Link Door Assembly	17
Cylinder Assembly	18
Hydraulic Cylinder Assembly No. 107-1360	19
Hydraulic Schematic Assembly	20
Attachments and Accessories	22



Frame and Axle Assembly

Ref.	Part Number	Qty.	Description	Ref.	Part Number	Qty.	Description
1	47-3550-03	1	Hitch-Clevis	20	SVP15000	2	Tire And Wheel ASM
2	327-23	2	Screw-HH	20:1	95-2638	1	Tire (24X13-12) 4-Ply
3	3296-53	2	Nut-Lock, NI	20:2	115-9040	1	Rim
4	106-9699	1	Jack	21	242-50	10	Nut-Lug
6	325-8	5	Screw-HH	22	106-0189	1	Frame
7	SVA17500-03	1	Base-Stand	22:2	106-0167	1	Decal-Caution
8	3296-23	20	Nut-Lock, NI	22:3	106-0162	2	Decal-Caution, Stay Clear (Ce)
9	3256-6	23	Washer-Flat	23	106-0190	1	Arm-Lift
10	SVA11200-03	1	Deck Mount ASM	23:2	93-6674	3	Decal-Warning
11	SV198-00-03	1	Hitch	24	CSP15000	2	Link-Quick
12	SVA11300-03	1	Bracket-Door, Left	25	SV139-00	2	Chain-Link
13	SVA11400-03	1	Bracket-Door, Right	26	SV158-00-03	1	Channel-Lock
14	325-5	4	Screw-HH	27	PF244-00	2	Pin-Wire, Lock
15	3296-39	18	Nut-Lock, NI	28	107-1180	1	Cylinder-HYD
16	3256-24	29	Washer-Flat	30	CS130-00	2	Spacer
17	325-6	4	Screw-HH	31	106-0186	1	Mount-Valve
18	323-6	8	Screw-HH	31:2	106-0183	1	Decal-Panel, Control
19	SVP20000	1	Axle-Torflex				

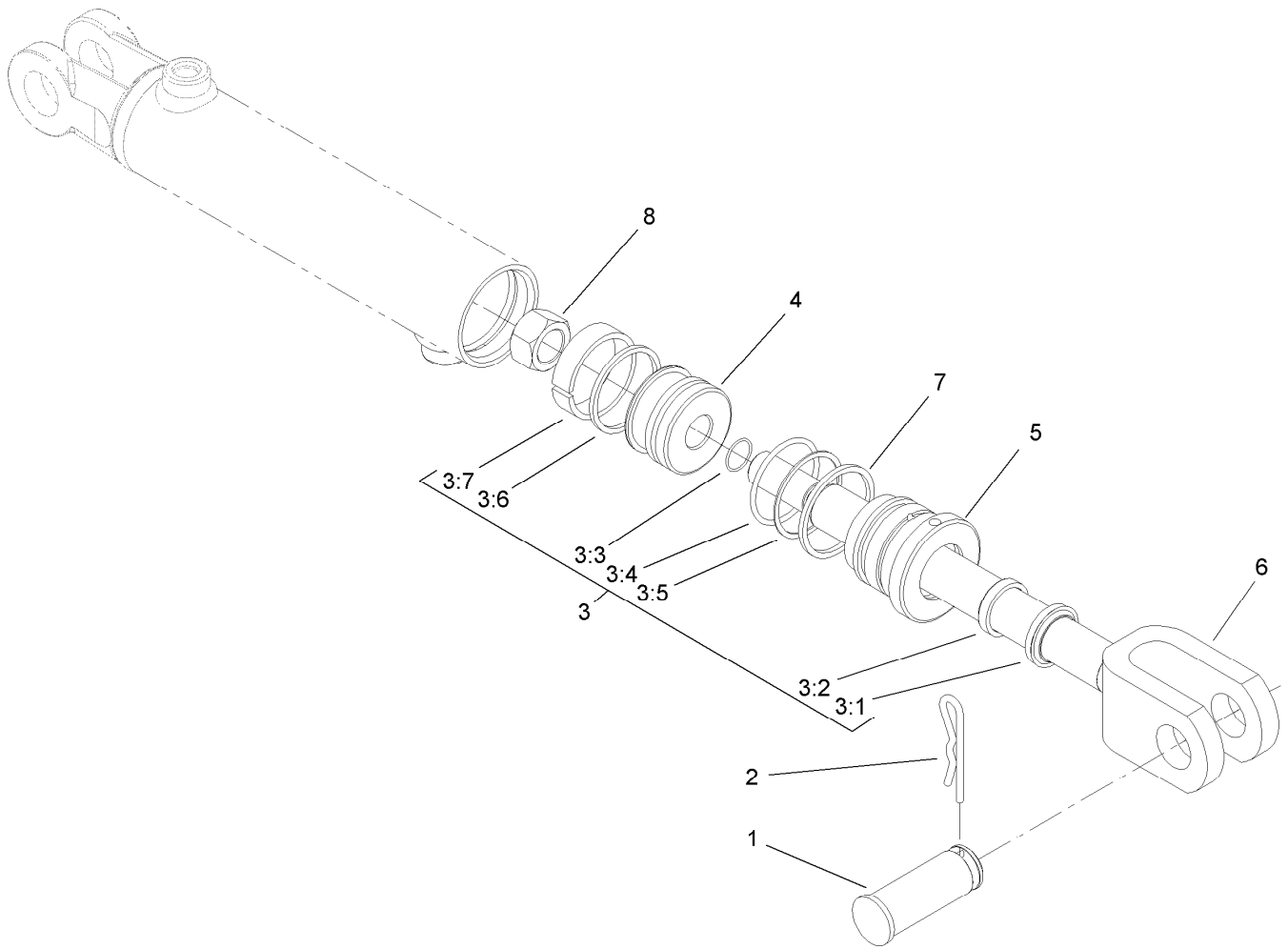
● Not illustrated



Frame and Axle Assembly (continued)

Ref.	Part Number	Qty.	Description	Ref.	Part Number	Qty.	Description
32	SVA17100-03	1	Stand-Valve	44:1	107-1550	1	Seal Kit ●
33	SVA17200-03	1	Tube-Horizontal	45	322-13	6	Screw-HH
34	SVA17000-03	1	Tube-Vertical	49	106-0171-03	1	Guard-Hose
35	SVA18500	1	Handle-Locking	50	SV136-00-03	1	Roller-Chain
36	SVA17400-03	1	Hanger-Hose, Right	52	325-12	1	Screw-HH
37	SVA16900-03	1	Stand-Vavle	54	322-2	4	Screw-HH
38	SVA17900-03	1	Hanger-Hose, Left	55	3253-4	4	Washer-Lock
39	323-11	9	Screw-HH	56	3256-23	10	Washer-Flat
40	3296-29	6	Nut-Lock, NI	57	105-4855-03	1	Support
41	3231-31	1	Screw-CARR	58	325-10	6	Screw-HH
42	SVA17700	1	Spacer	59	110-7505	1	Lockout-Valve
43	106-0168	1	Valve-Control, Single Spool	59:1	110-7506	1	Decal-Caution (Ce)
43:1	107-1551	1	Seal Kit ●	60	107-1186	1	Pin
44	106-0169	1	Valve-Control, Three Spool	61	323-7	1	Screw-HH

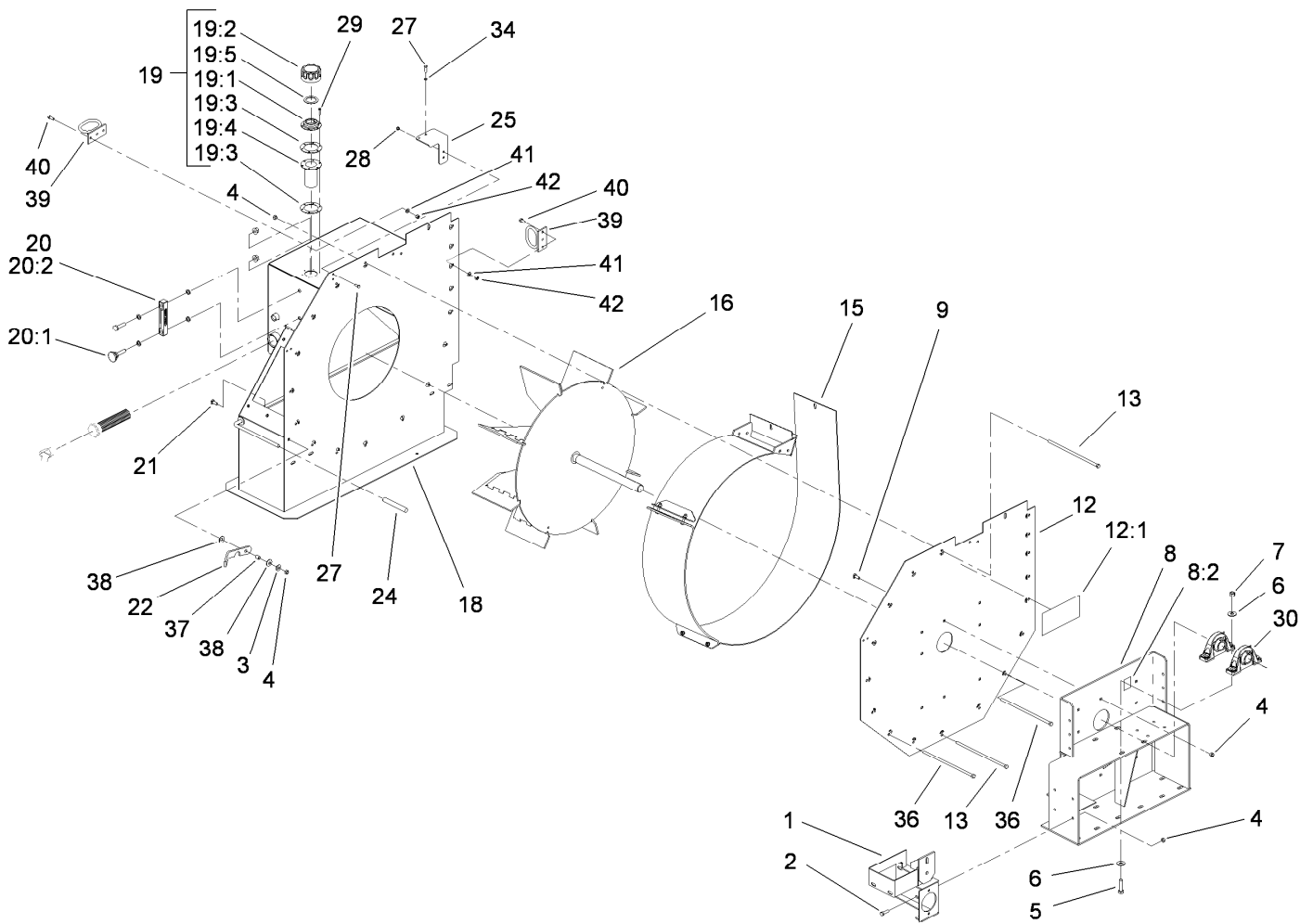
● Not illustrated



Hydraulic Cylinder Assembly No. 107-1180

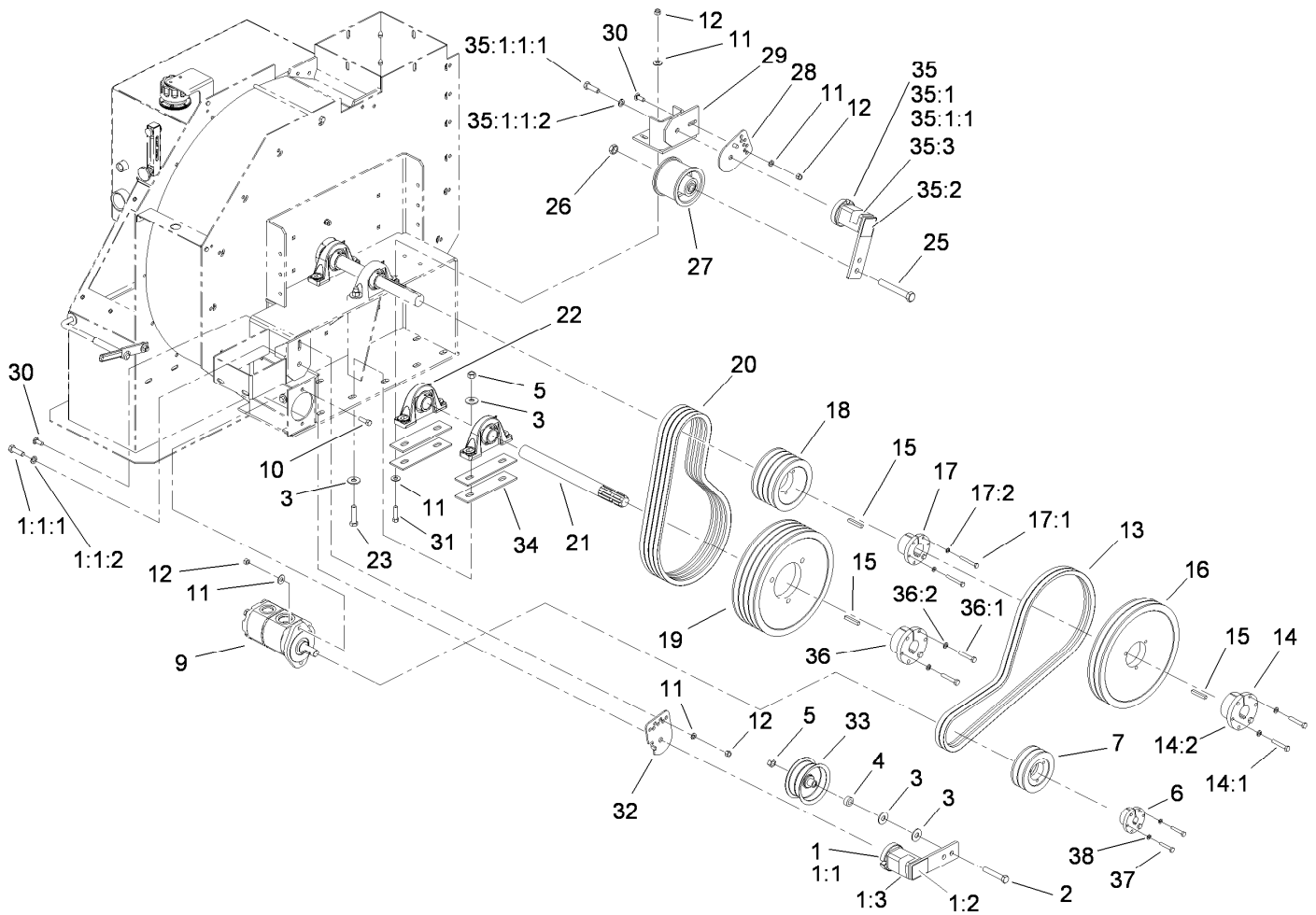
<i>Ref.</i>	<i>Part Number</i>	<i>Qty.</i>	<i>Description</i>
1	107-1182	2	Pin-Clevis
2	9335064	2	Pin-Cotter, Hair
3	107-1183	1	Seal Kit
3:1		1	Wiper ●
3:2		1	U-Cup ●
3:3		1	Ring-Retaining ●
3:4		1	Ring-Retaining ●
3:5		1	Back-Up Ring ●
3:6		1	Capseal ●
3:7		1	Wear Ring ●
4		1	Piston ●
5		1	Head ●
6		1	Rod ASM ●
7		1	Ring-Retaining ●
8		1	Nut-Lock ●

● Not serviced separately



Impeller Assembly

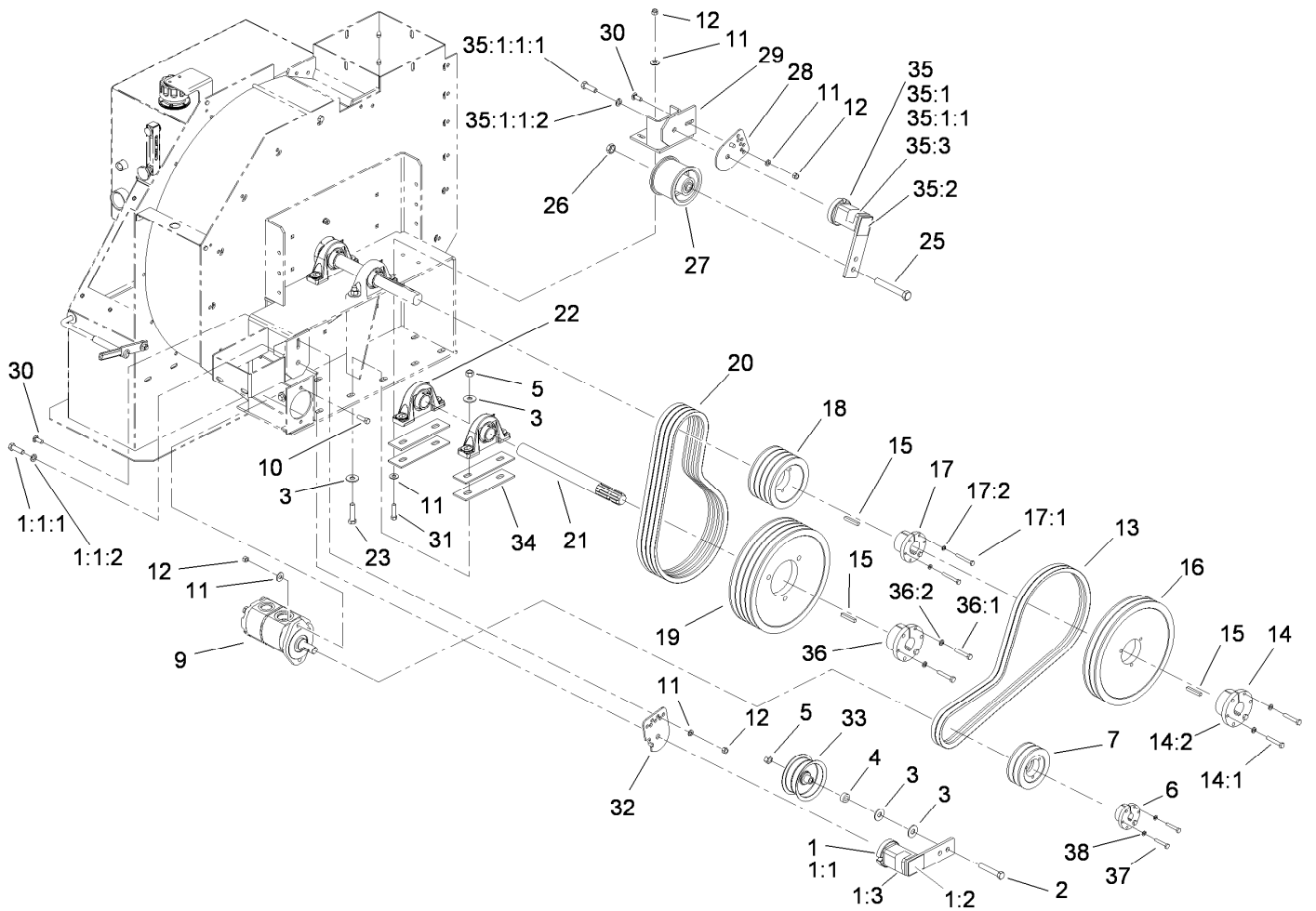
<i>Ref.</i>	<i>Part Number</i>	<i>Qty.</i>	<i>Description</i>	<i>Ref.</i>	<i>Part Number</i>	<i>Qty.</i>	<i>Description</i>
1	108-0894-01	1	Mount-Pump	19:5	76-1720	1	Gasket-Cap, Filler
2	323-7	4	Screw-HH	20	SVB14700	1	Thermometer ASM
3	3256-4	4	Washer-Flat	20:1	108-0852	1	Probe-Temp
4	104-8301	30	Nut-Flange, NI	20:2	108-0853	1	Body-Temp
5	325-8	4	Screw-HH	21	3231-28	1	Screw-CARR
6	3256-6	8	Washer-Flat	22	106-0236-01	1	Latch
7	3296-23	4	Nut-Lock, NI	24	PF225-00	1	Cover-Handle
8	106-0191	1	Mount-Drive	25	SVB15900-01	1	Mount-Filter
8:2	105-4586	1	Decal-Shield	27	32105-15	4	Screw-HWH
9	3231-2	8	Bolt-CARR	28	3296-42	2	Nut-Lock, NI
12	106-0206	1	Panel-Back	29	32144-18	6	Screw-HWH
12:1	66-6140	1	Decal	30	117-8263	2	Bearing-Block, Pillow
13	106-0184	15	Screw-HH	34	3253-3	2	Washer-Lock
15	107-1359	1	Band ASM	36	105-4865	2	Screw-HH
16	107-1431-01	1	Impeller ASM	37	92-9025	1	Spacer
18	SV305-00-01	1	Funnel ASM	38	3290-473	2	Washer-Belleville
19	95-7004	1	Filler Cap ASM	39	104-0028	2	Guide-Hose
19:1	353-961	1	Flange	40	322-5	4	Screw-HH
19:2	353-962	1	Cap ASM	41	3256-23	4	Washer-Flat
19:3	353-963	2	Gasket	42	3296-29	4	Nut-Lock, NI
19:4	62-2610	1	Strainer-Cap, Filler				



Drive Assembly

Ref.	Part Number	Qty.	Description	Ref.	Part Number	Qty.	Description
1	105-0667	1	Idler Tensioner ASM	14:1	322-10	3	Screw-HH
1:1		1	Tensioner-Idler ●	14:2	3253-4	3	Washer-Lock
1:1:1	33116-040	1	Screw-HH	15	61-004-0451	3	Key-Square
1:1:2	3253-7	1	Washer-Lock	16	106-0353	1	Pulley
1:2	105-0668	1	Decal-Align	17	106-0360	1	Pulley Bushing ASM
1:3	105-0669	1	Decal-Angle	17:1	321-11	3	Screw-HH
2	325-13	1	Screw-HH	17:2	3253-3	3	Washer-Lock
3	3256-6	10	Washer-Flat	18	106-0355	1	Pulley
4	GF213-00	1	Spacer	19	106-0356	1	Pulley
5	3296-23	5	Nut-Lock, NI	20	SBC17000	4	V-Belt
6	106-0357	1	Bushing-Pulley	21	117-8257	1	Shaft-Input
7	106-0352	1	Pulley	22	117-8263	2	Bearing-Block, Pillow
9	108-0856	1	Pump-HYD	23	325-10	4	Screw-HH
10	323-7	6	Screw-HH	25	3214-15	1	Screw-HH
11	3256-4	4	Washer-Flat	26	3220-6	1	Nut-Jam
12	104-8301	8	Nut-Flange, NI	27	105-4821	1	Idler-Pulley
13	SVB13600	2	V-Belt	28	105-4839	1	Stabilizer-Tensioner
14	106-0358	1	Pulley Bushing ASM	29	SV286-00-01	1	Bracket-Lovejoy

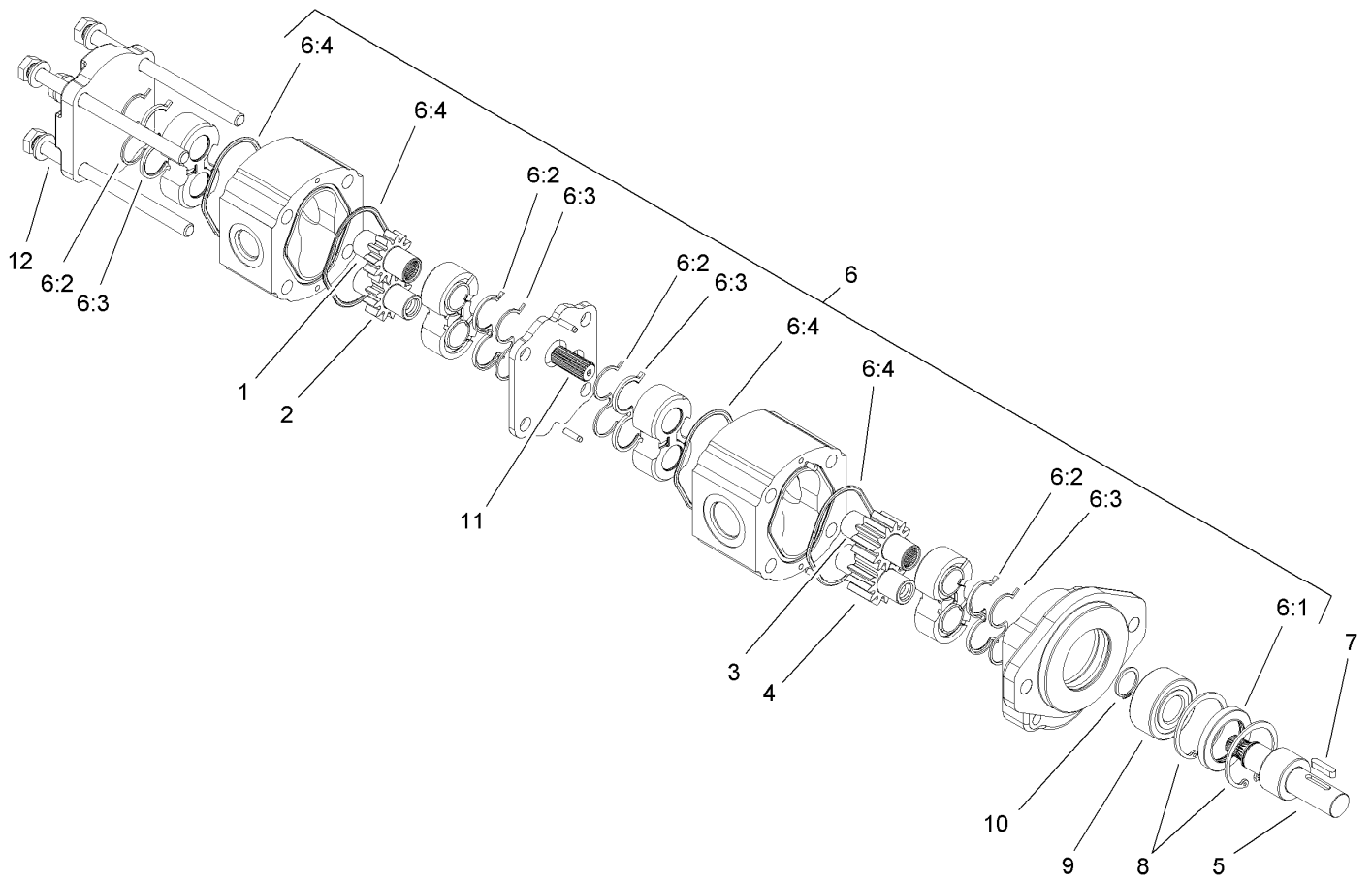
● Not serviced separately



Drive Assembly (continued)

Ref.	Part Number	Qty.	Description	Ref.	Part Number	Qty.	Description
30	3231-25	2	Bolt-CARR	35:1:1:2	3253-7	1	Washer-Lock
31	323-8	4	Screw-HH	35:2	105-0668	1	Decal-Align
32	105-4835	1	Stabilizer-Tensioner	35:3	105-0669	1	Decal-Angle
33	FBJ11100	1	Pulley-Idler	36	106-0362	1	Bushing-Pulley
34	SVB19500-01	4	Shim	36:1	325-11	3	Screw-HH
35	106-0334	1	Idler Tensioner ASM	36:2	3253-7	3	Washer-Lock
35:1		1	Tensioner-Idler, Modified ●	37	108-0854	3	Screw-HSH
35:1:1		1	Tensioner-Idler ●	38	3253-3	3	Washer-Lock
35:1:1:1	33116-040	1	Screw-HH				

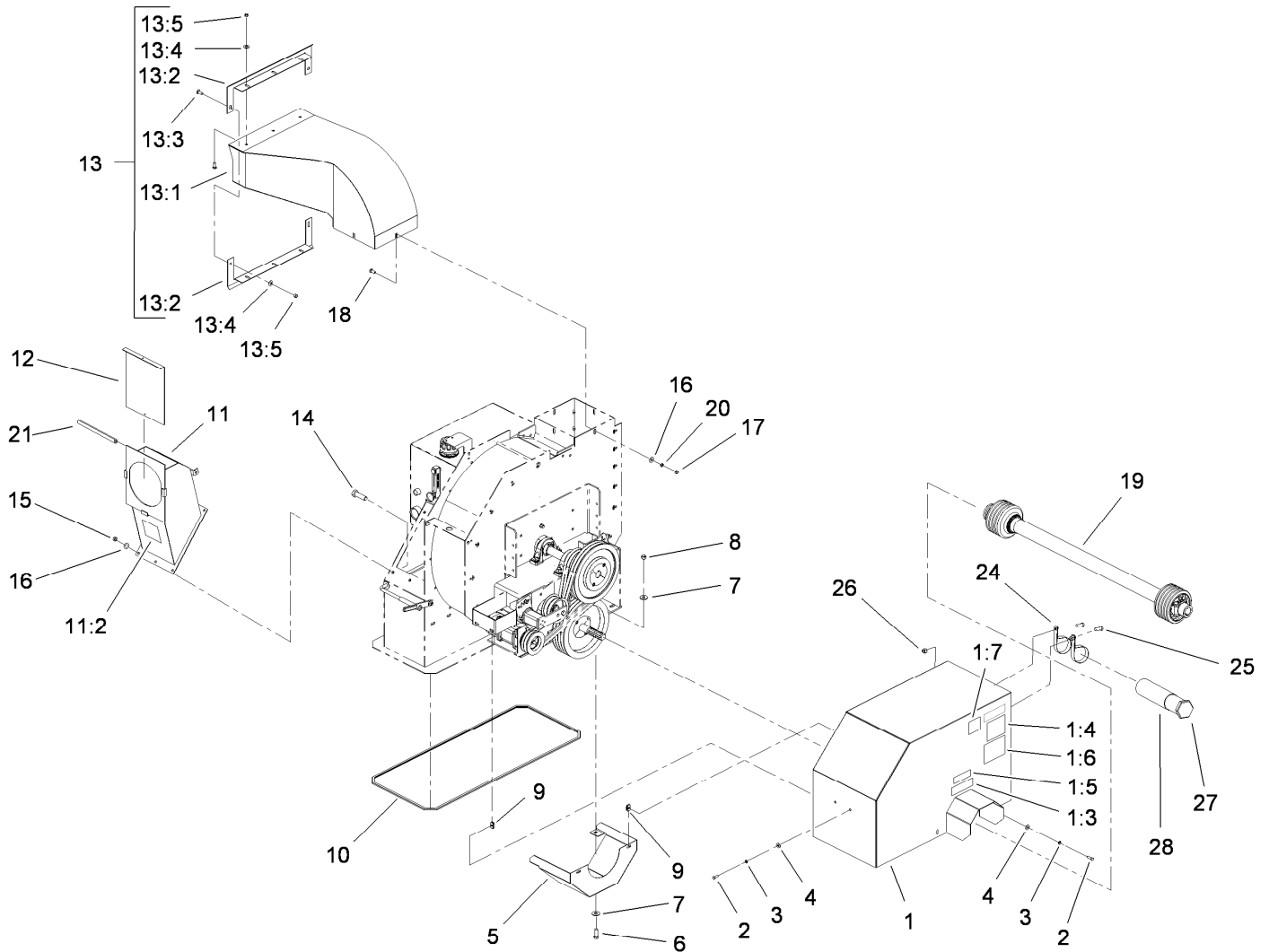
● Not serviced separately



Hydraulic Double Gear Pump Assembly No. 108-0856

Ref.	Part Number	Qty.	Description
1		1	Gear-Drive ●
2		1	Gear-Driven ●
3		1	Gear-Drive ●
4		1	Gear-Driven ●
5		1	Shaft ●
6	108-2438	1	Seal Kit
6:1		1	Seal-Lip ●
6:2		4	Seal-Back Up ●
6:3		4	Seal-Channel ●
6:4		4	Seal-Section ●
7	6366	1	Key
8		1	Bearing ●
9		1	Ring-Retaining ●
10		1	Ring-Retaining ●
11		1	Shaft ●
12		1	Screw ●

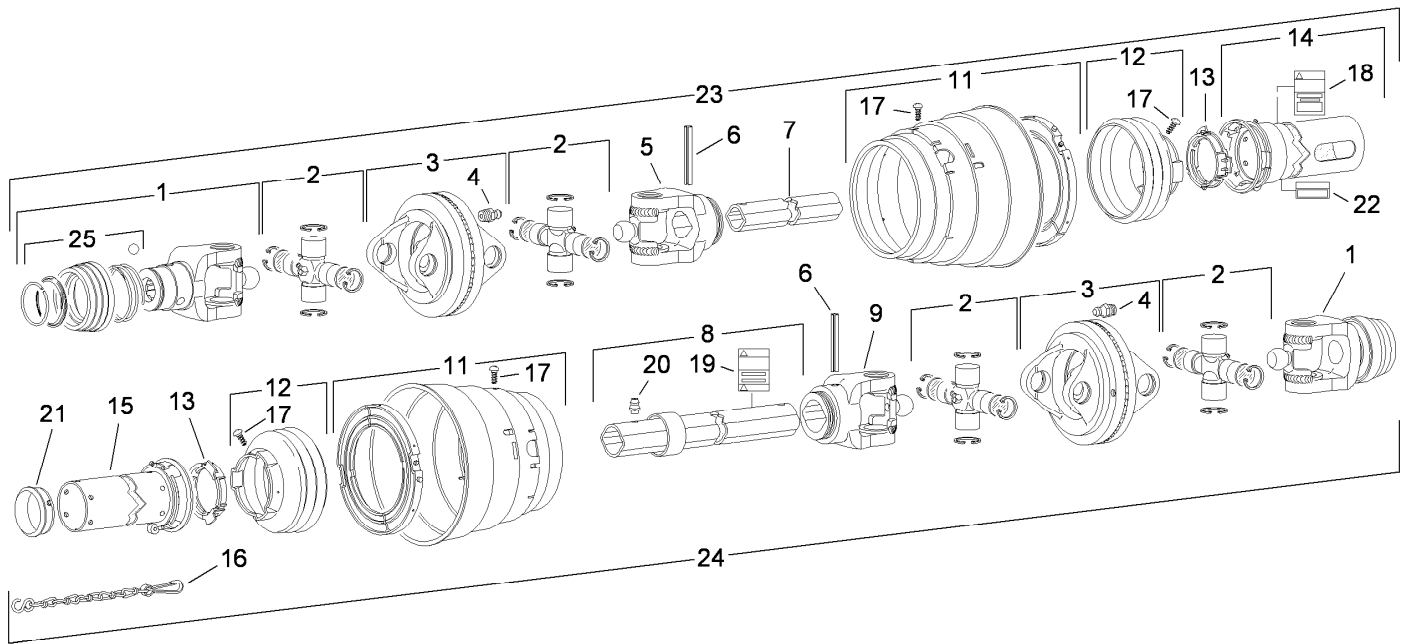
● Not serviced separately



Power-Take-Off Shaft and Shield Assembly

Ref.	Part Number	Qty.	Description
1	106-0193	1	Shield-Drive
1:3	105-0628	1	Decal-Caution, U-Joint
1:4	105-4587	1	Decal-Caution, Ce
1:5	105-0627	1	Decal-Caution
1:6	106-0163	1	Decal-Danger, Blowers
1:7	105-4586	1	Decal-Shield
2	322-5	6	Screw-HH
3	3253-4	6	Washer-Lock
4	3256-23	6	Washer-Flat
5	105-4842-01	1	Guard-Pulley
6	325-6	2	Screw-HH
7	3256-6	4	Washer-Flat
8	3296-23	2	Nut-Lock, NI
9	94-2413	4	U-Nut
10	105-4843	1	Trim
11	106-0192	1	Chute-Vac
11:2	106-0166	1	Decal-Danger, Blower
12	SV143-00-01	1	Door-Hose
13	SVA14900	1	Spout ASM

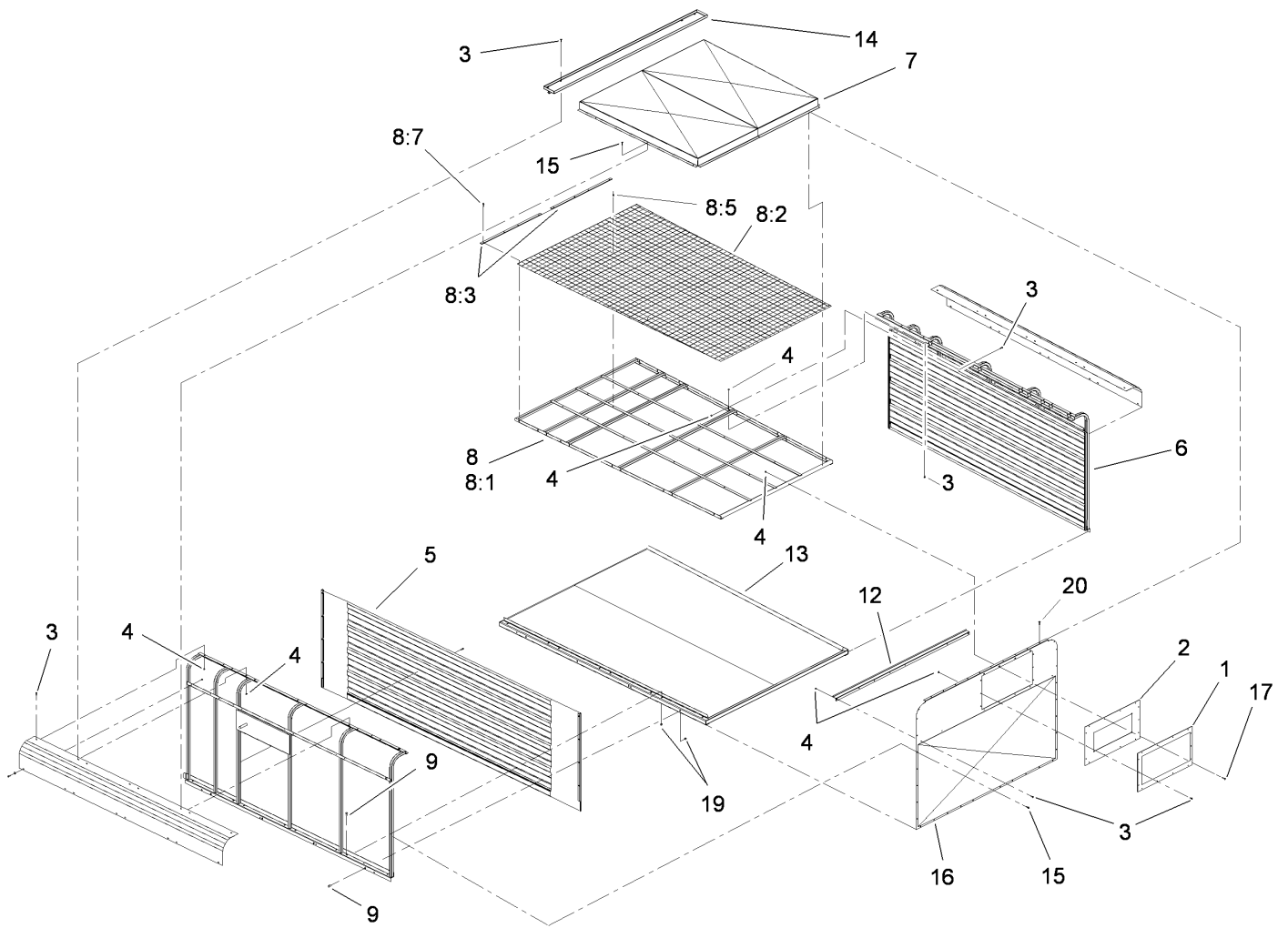
Ref.	Part Number	Qty.	Description
13:1	SV216-00-01	1	Transition-Spout
13:2	SVA10200-01	2	Seal-Dust
13:3	3231-2	8	Bolt-CARR
13:4	3256-24	8	Washer-Flat
13:5	3296-39	8	Nut-Lock, NI
14	3231-2	6	Bolt-CARR
15	3296-39	6	Nut-Lock, NI
16	3256-4	10	Washer-Flat
17	3217-7	4	Nut-Hex
18	3231-2	4	Bolt-CARR
19	SVA10500	1	Shaft-PTO, Double
20	3253-21	4	Washer-Lock
21	106-0207	1	Trim-Chute Vac
24	2412-133	2	R-Clamp
25	323-5	2	Screw-HH
26	3296-39	2	Nut-Lock, NI
27	104-7048	1	Cap-Housing
28	104-7050	1	Tube-Manual



Double Power-Take-Off Shaft Assembly No. SVA10500

Ref.	Part Number	Qty.	Description
1	120-6119	1	Yoke ASM
2	SVA10501	4	Cross And Bearing Kit
3	120-6120	2	Double Yoke
4	84-6290	2	Zerk-Grease
5	SVA10508	1	Yoke-Inboard, Tractor End
6	105-2927	2	Pin-Spring
7	120-6121	1	Tube-Inner
8	SVA10511	1	Tube-Outer
9	SVA10509	1	Yoke-Inboard, Implement End
11	120-6122	1	Guard And Bearing ASM
12	120-6123	1	Guard Cone,3 Rib
13	105-2936	2	Bearing-Ring
14	SVA10502	1	Shield-Outer
15	SVA10503	1	Shield-Inner
16	77-4760	1	Chain-Safety
17	84-6360	14	Screw
18	92-7936	1	Decal-Warning
19	92-7937	1	Decal-Warning
20	84-6370	1	Zerk-Grease
21		1	Support-Bearing ●
22		1	Decal-Lubrication ●
23	SVA1050T	1	Shaft-Double Cv, PTO (Tractor Half)
24	SVA1050I	1	Shaft-Double Cv, PTO (Implement Half)
25	120-6124	1	Collar Kit ASM

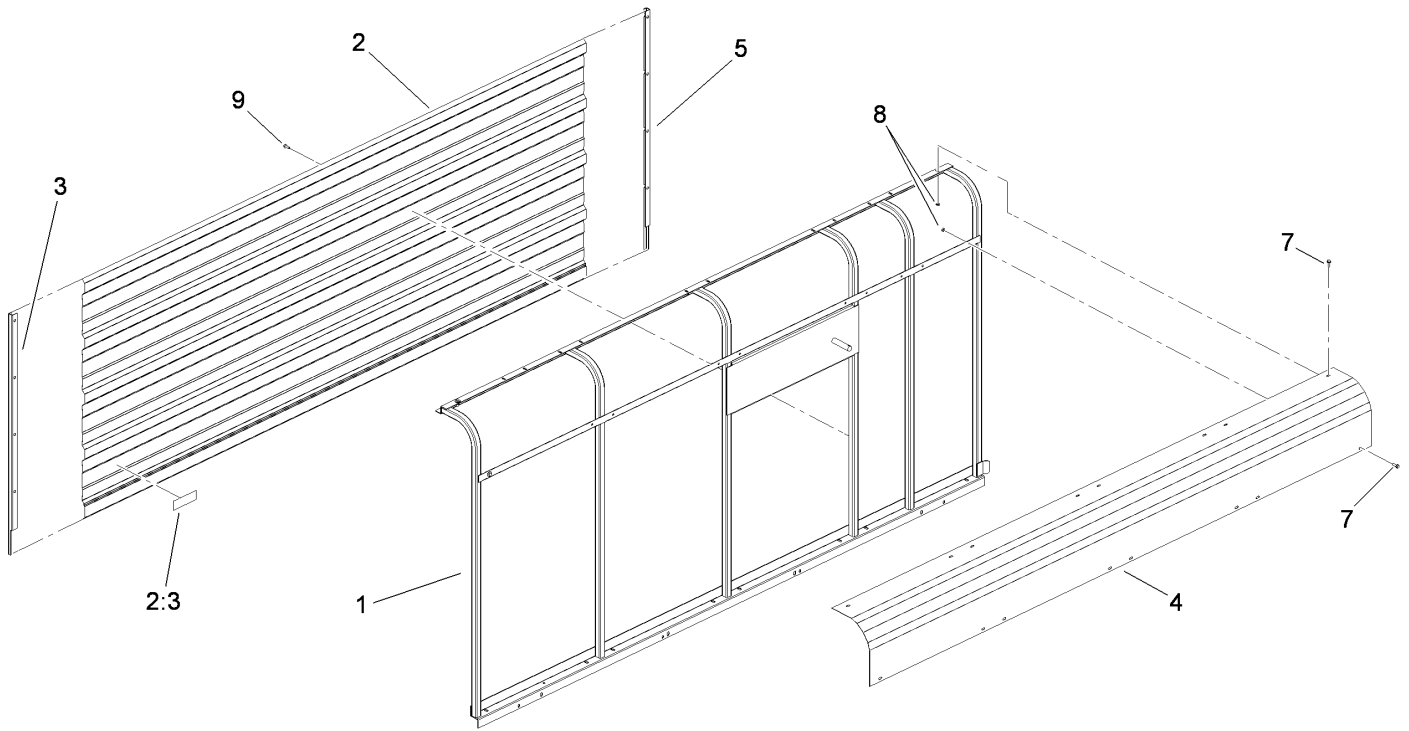
● Not serviced separately



Sidewall Assembly

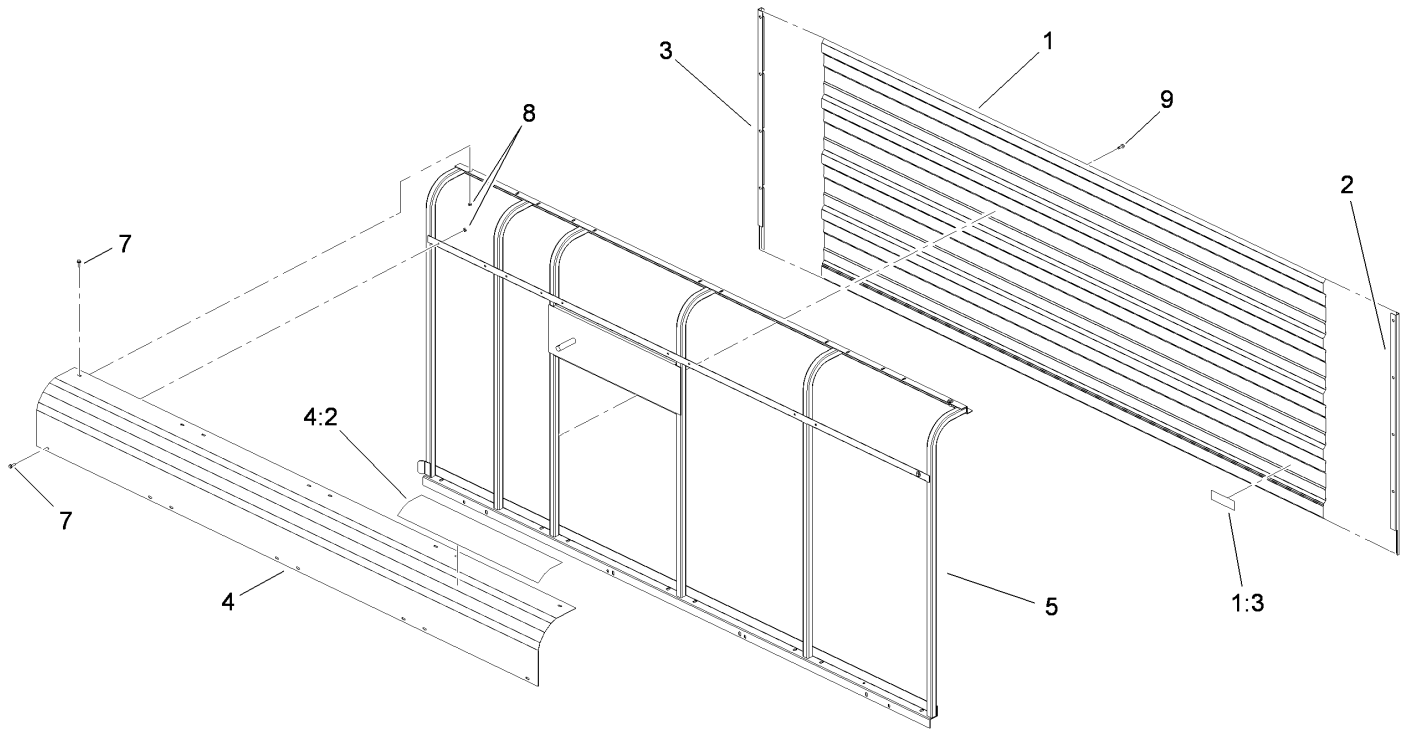
<i>Ref.</i>	<i>Part Number</i>	<i>Qty.</i>	<i>Description</i>	<i>Ref.</i>	<i>Part Number</i>	<i>Qty.</i>	<i>Description</i>
1	107-1362-01	1	Plate	8:5	3269-21	15	Rivet-Pop
2	107-1361	1	Gasket-Dust	8:7	105-0618	8	Screw
3	32105-15	69	Screw-HWH	9	3234-42	24	Screw-HHF
4	3296-42	74	Nut-Lock, NI	12	SVA12000-01	1	Brace-Front
5		1	LH Sidewall ASM ●	13	VT301-00-03	1	Frame-Floor
6		1	RH Sidewall ASM ●	14	SVA11900-01	1	Hinge Mount ASM
7	107-1495-01	1	Cap-Dust	15	105-0618	28	Screw
8		1	Roof-Trailer ●	16	107-1363-01	1	Sheet-Trailer, Front
8:1	VT306-00-01	1	Roof Frame ASM	17	321-10	4	Screw-HH
8:2	VT307-00	2	Screen-Roof	19	3290-357	24	Nut-HHF, Whiz
8:3	VT308-00-01	2	Trim-Edge	20	105-4848	14	Screw

● Not serviced separately



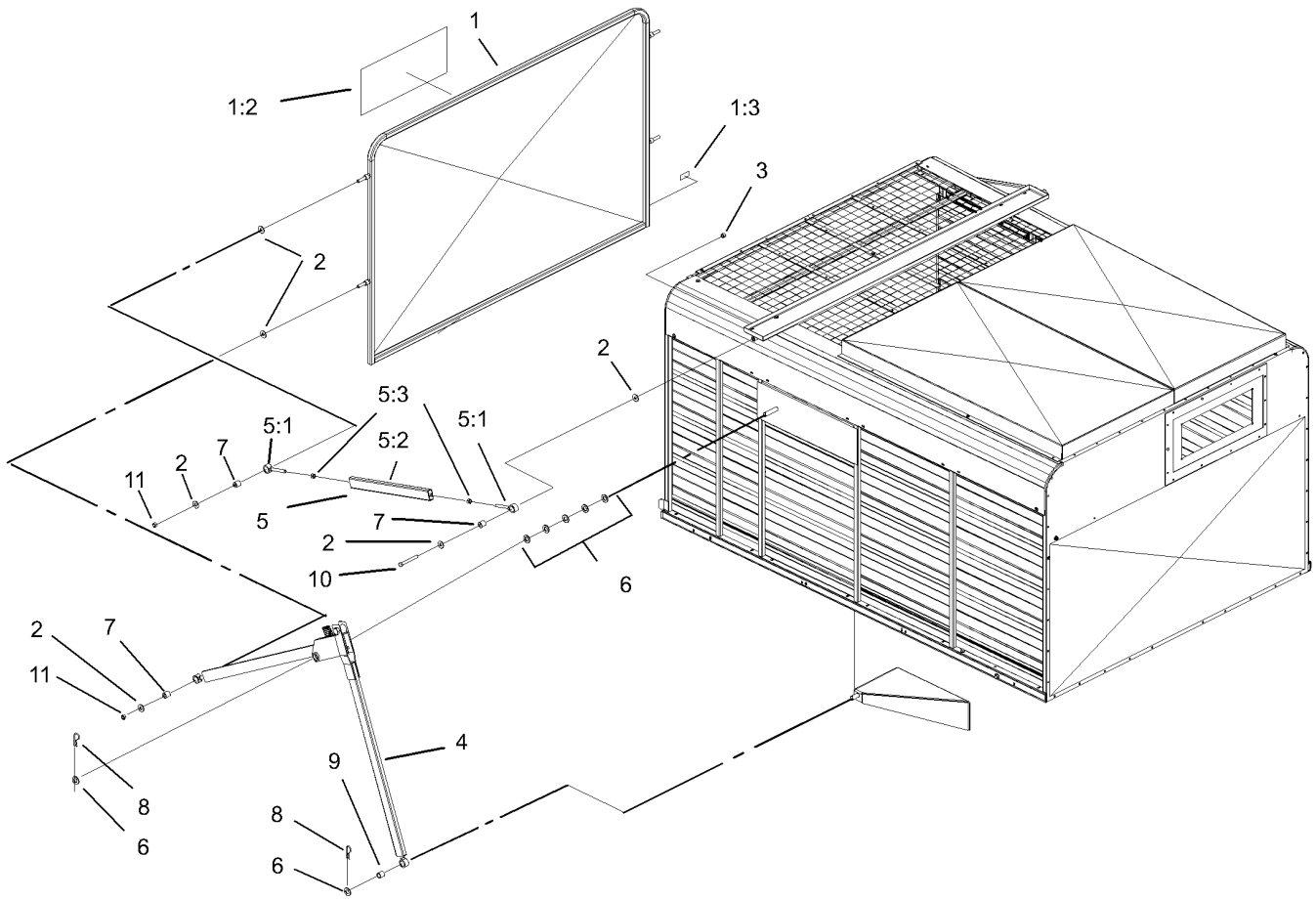
Left Hand Sidewall Assembly

<i>Ref.</i>	<i>Part Number</i>	<i>Qty.</i>	<i>Description</i>
1	VT203-0L-01	1	Left Wall ASM
2	106-0176	1	Sheet-Sidewall, LH
2:3	106-0162	1	Decal-Caution, Stay Clear (Ce)
3	VT130-0L-01	1	Trim-Enclosure, Left
4	106-0175	1	Corner-Roof, LH
5	VT130-0R-01	1	Trim-Enclosure, Right
7	32105-15	8	Screw-HWH
8	3296-42	8	Nut-Lock, NI
9	105-0618	24	Screw



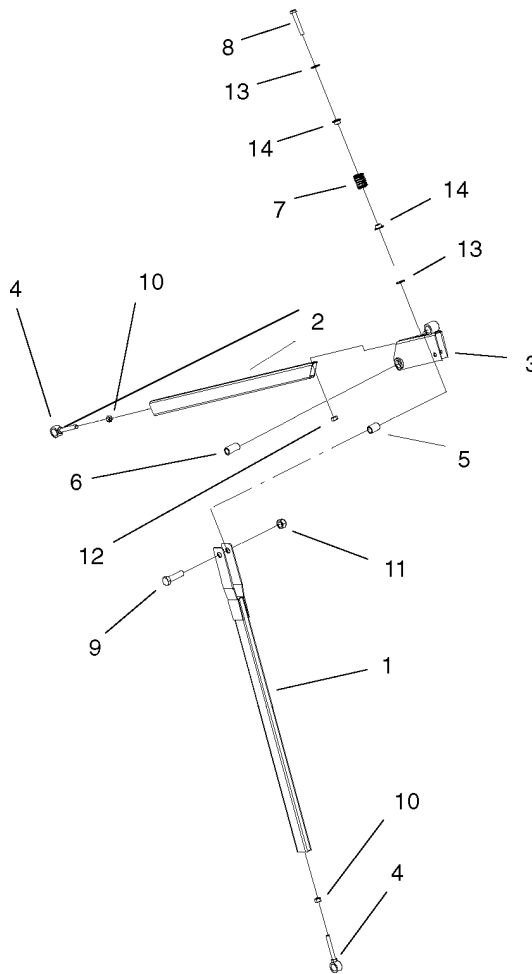
Right Hand Sidewall Assembly

<i>Ref.</i>	<i>Part Number</i>	<i>Qty.</i>	<i>Description</i>
1	106-0174	1	Sheet-Sidewall, RH
1:3	106-0162	1	Decal-Caution, Stay Clear (Ce)
2	VT130-0R-01	1	Trim-Enclosure, Right
3	VT130-0L-01	1	Trim-Enclosure, Left
4	106-0173	1	Corner-Roof, RH
4:2	105-0738	1	Decal-RH
5	VT203-0R-01	1	Right Wall ASM
7	32105-15	8	Screw-HWH
8	3296-42	8	Nut-Lock, NI
9	105-0618	24	Screw



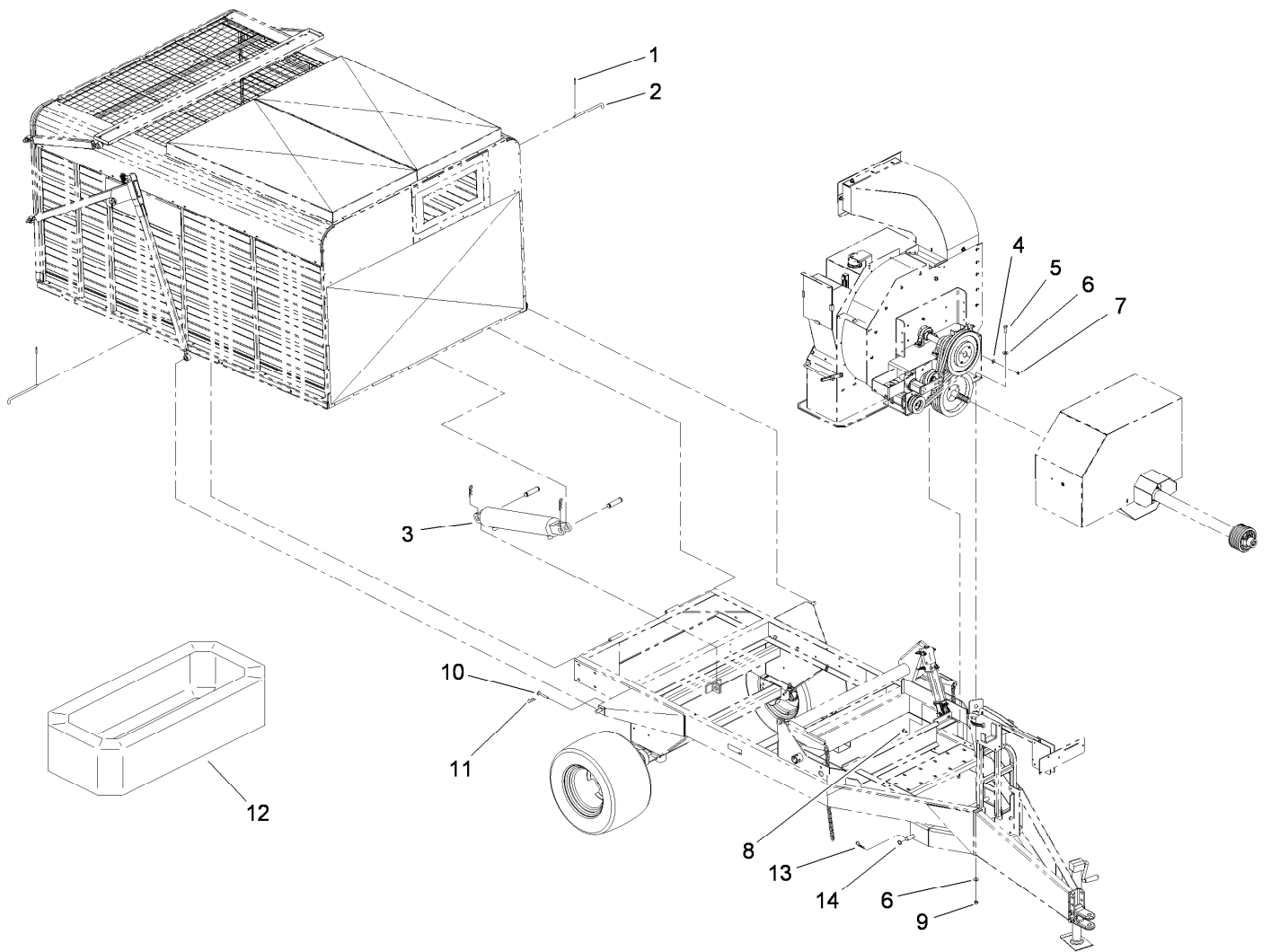
Door Assembly

Ref.	Part Number	Qty.	Description
1	106-0194	1	Door-Trailer
1:2	67-7920	1	Decal
1:3	106-0162	1	Decal-Caution, Stay Clear (Ce)
2	3256-5	12	Washer-Flat
3	3296-23	2	Nut-Lock, NI
4	SVA15100	2	Lower Link Door ASM
5	SVA15000	2	Upper Link Door ASM
5:1	SVA11700-01	1	Link ASM
5:2	SVA12200	2	Pivot-Hinge
5:3	3217-9	2	Nut-HH
6	3256-28	14	Washer-Flat
7	SVA12700	6	Bushing
8	9335064	4	Pin-Cotter, Hair
9	SVA12800	2	Bushing
10	325-17	2	Screw-HH
11	32153-5	4	Nut-Hex



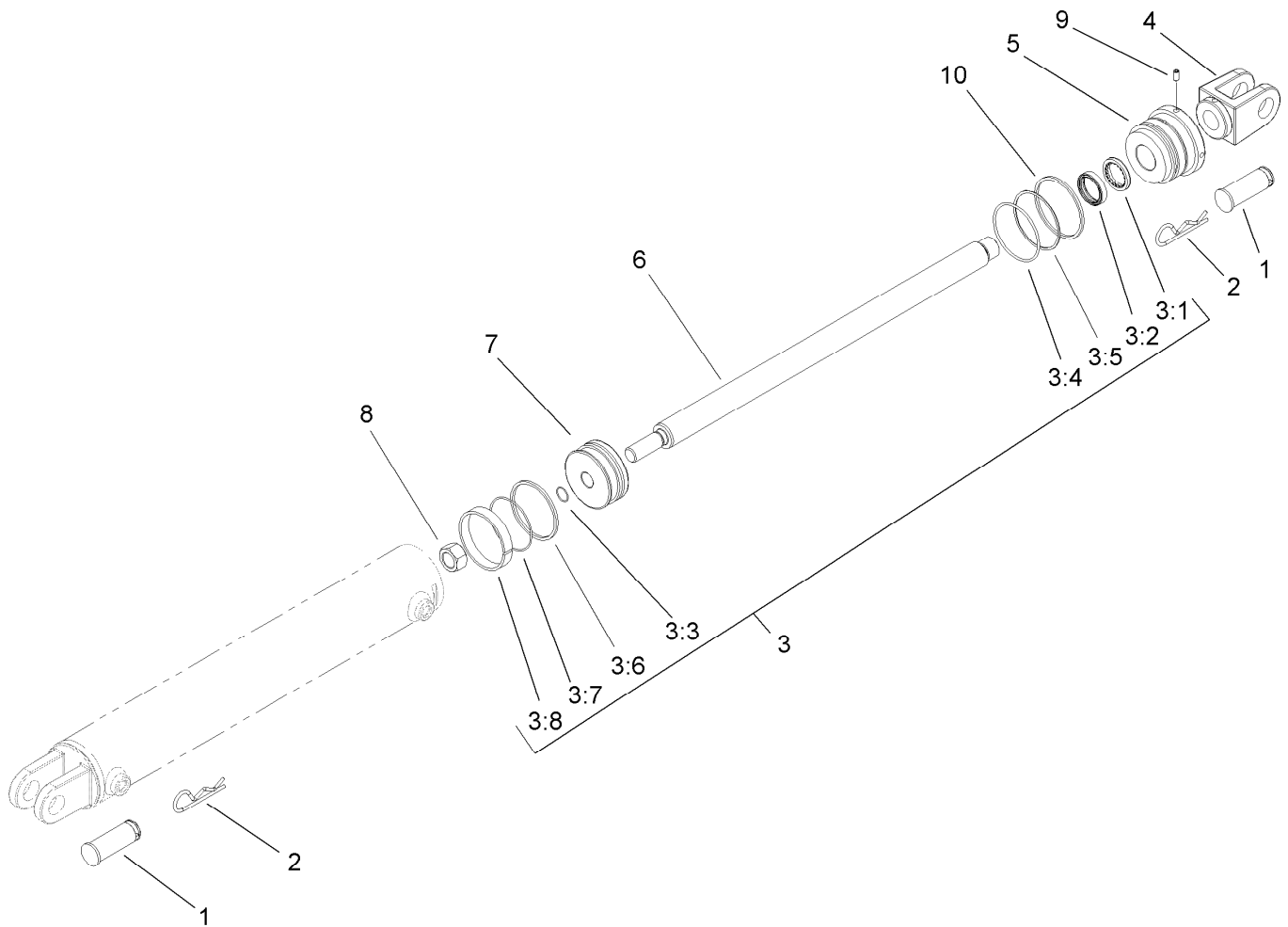
Lower Link Door Assembly

<i>Ref.</i>	<i>Part Number</i>	<i>Qty.</i>	<i>Description</i>
1	SVA11800-01	1	Pull Arm ASM
2	SVA11600-01	1	Lower Linkage ASM
3	SVA12100-01	1	Mount-Bracket
4	SVA12200	2	Pivot-Hinge
5	SVA12900	1	Bushing
6	SVA13000	1	Bushing
7	GF206-00	1	Spring-Compression
8	325-13	1	Screw-HH
9	328-3	1	Screw-HH
10	3217-9	2	Nut-HH
11	3296-51	1	Nut-Lock, NI
12	3296-23	1	Nut-Lock, NI
13	3256-26	2	Washer-Flat
14	SVA13300	2	Bushing-Flange



Cylinder Assembly

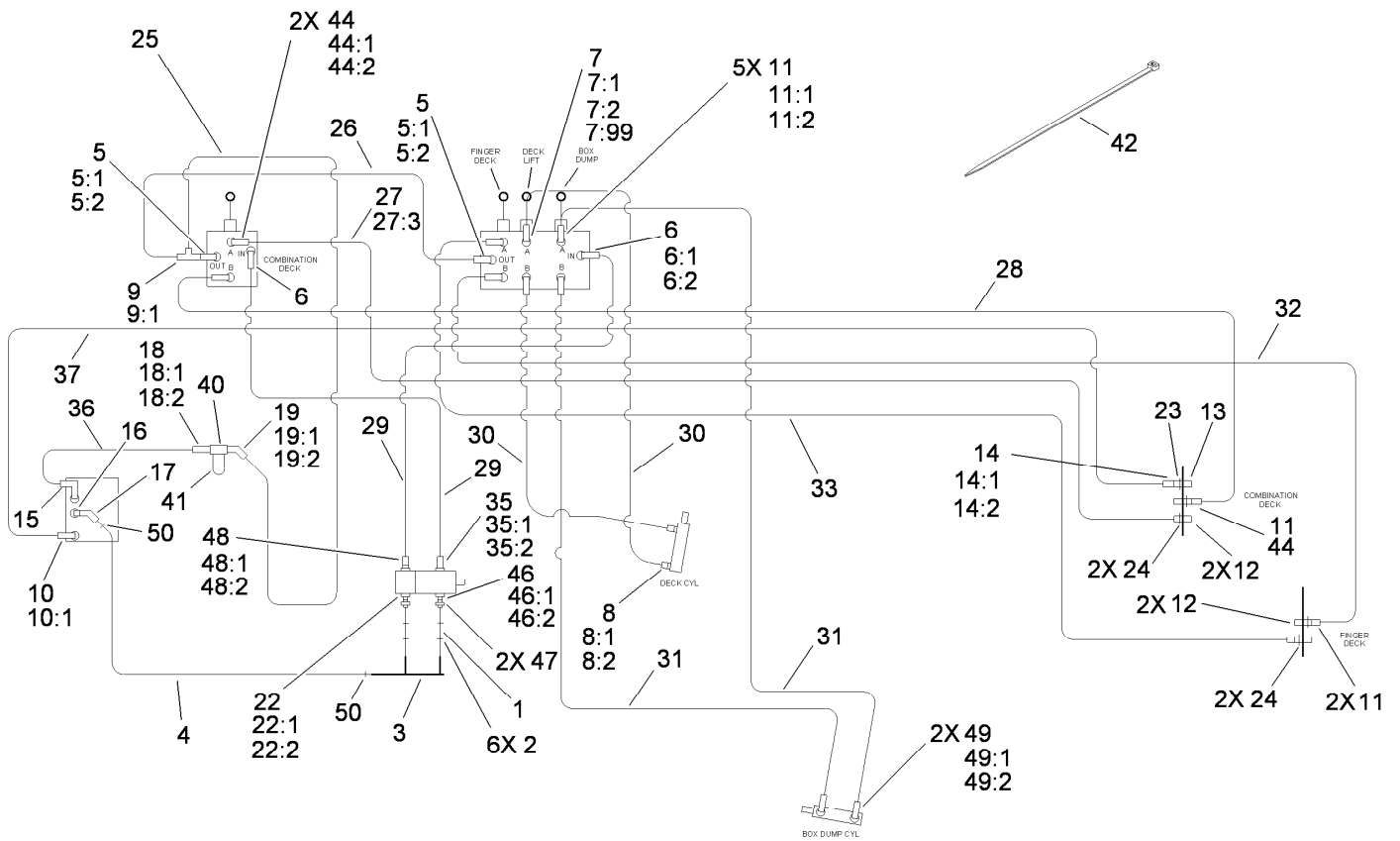
Ref.	Part Number	Qty.	Description
1	3272-22	2	Pin-Cotter
2	PB114-00	2	Pin-Hinge
3	107-1360	1	HYD Cylinder ASM
4	3256-4	4	Washer-Flat
5	325-6	5	Screw-HH
6	3256-6	10	Washer-Flat
7	3296-39	4	Nut-Lock, NI
8	3231-25	4	Bolt-CARR
9	3296-23	5	Nut-Lock, NI
10	SVA12600	2	Door Pin ASM
11	3290-355	2	Pin-Hair
12	SVP15100	1	Ring-Canvas
13	9335064	2	Pin-Cotter, Hair
14	3256-29	2	Washer-Flat



Hydraulic Cylinder Assembly No. 107-1360

Ref.	Part Number	Qty.	Description
1	107-1182	2	Pin-Clevis
2	9335064	2	Pin-Cotter, Hair
3	108-2435	1	Seal Kit
3:1		1	Wiper ●
3:2		1	Seal ●
3:3		1	Ring-Retaining ●
3:4		1	Ring-Retaining ●
3:5		1	Ring-Back Up ●
3:6		1	Seal ●
3:7		1	Ring-Retaining ●
3:8		1	Ring-Wear ●
4	108-2436	1	Clevis-Rod
5		1	Head ●
6		1	Rod ●
7		1	Piston ●
8		1	Nut-Lock ●
9		1	Screw-Set ●
10		1	Ring-Retaining ●

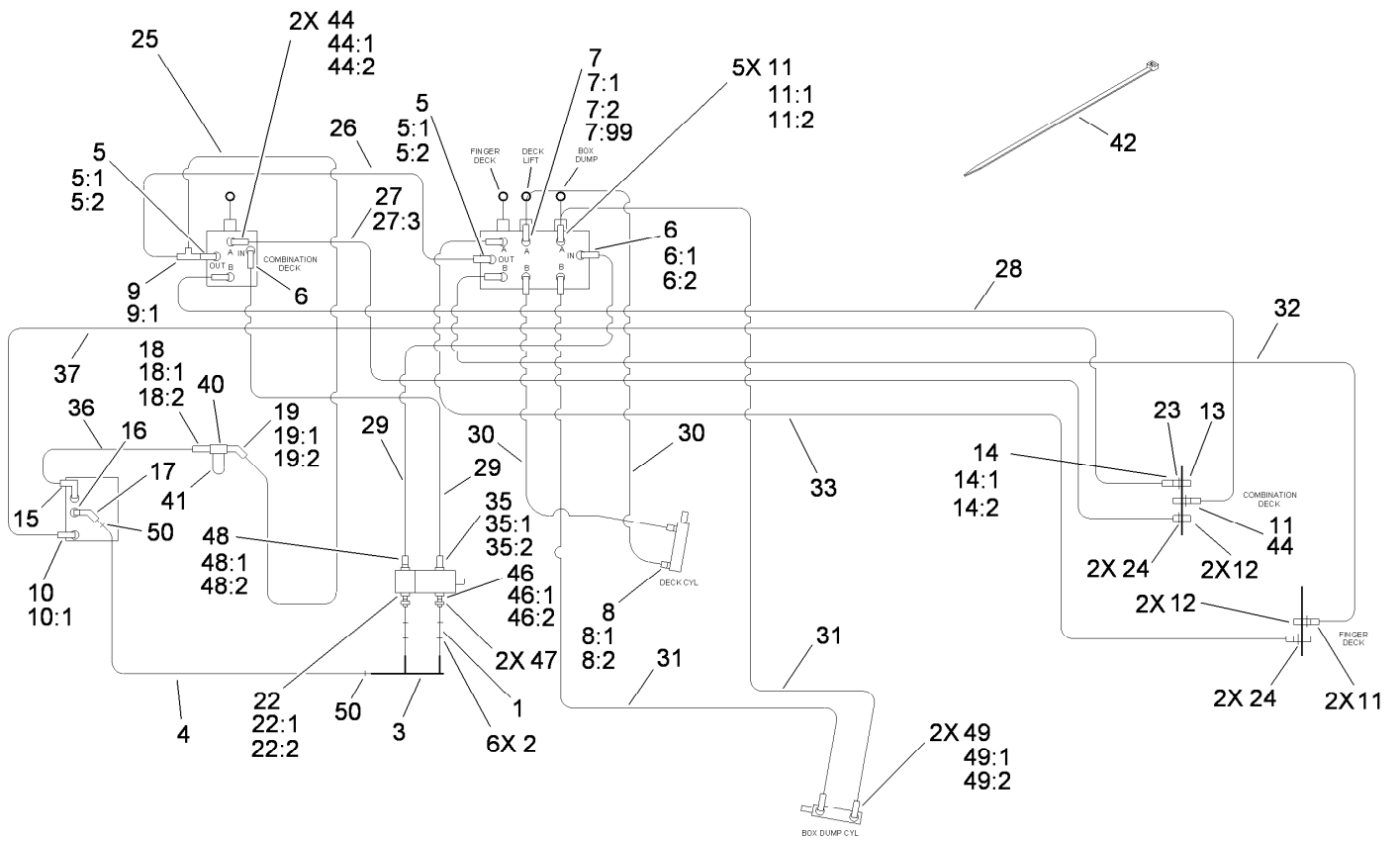
● Not serviced separately



Hydraulic Schematic Assembly

Ref.	Part Number	Qty.	Description
1	106-0072	2	Hose-Suction
2	2412-129	4	Clamp-Hose
3	108-0855	1	Tube-Maniflod
4	106-0071	1	Hose-Suction
5	340-7	2	Adapter
5:1	237-65	1	O-Ring
5:2	237-80	1	O-Ring
6	340-6	2	Fitting-HYD, Straight
6:1	237-30	1	O-Ring
6:2	237-80	1	O-Ring
7	106-0073	1	Fitting-Orificed
7:1	237-22	1	O-Ring
7:2	237-79	1	O-Ring
7:99	32151-83	1	Ring-Snap
8	340-2	2	Fitting-HYD, Straight
8:1	237-22	1	O-Ring
8:2	237-42	1	O-Ring
9	340-147	1	Fitting-HYD, Tee
9:1	237-65	2	O-Ring
10	340-124	1	Adapter
10:1	237-22	1	O-Ring
11	340-3	7	Adapter
11:1	237-22	1	O-Ring
11:2	237-79	1	O-Ring
12	105-4169	4	Coupler-Female
13	63-1220	1	Coupler-Disconnect, Quick
14	340-82	1	Adapter

Ref.	Part Number	Qty.	Description
14:1	237-42	1	O-Ring
14:2	237-21	1	O-Ring
15	340-108	1	Fitting-HYD
16	SVB14400	1	Strainer-Suction
17	SVB15100	1	Adapter-Cms
18	340-8	1	Adapter
18:1	237-65	1	O-Ring
18:2	237-81	1	O-Ring
19	340-156	1	Fitting-HYD
19:1	237-65	1	O-Ring
19:2	237-81	1	O-Ring
22	340-9	1	Fitting-HYD, Straight
22:1	237-58	1	O-Ring
22:2	237-81	1	O-Ring
23	32151-83	1	Ring-Snap
24	32120-2	4	Ring-Retaining
25	105-0649	1	Hyd Hose ASM
26	105-0648	1	Hyd Hose ASM
27	105-0650	1	Hyd Hose ASM
27:3	237-79	1	O-Ring
28	105-0651	1	Hyd Hose ASM
29	105-0653	2	Hyd Hose ASM
30	105-0642	2	Hyd Hose ASM
31	105-0652	2	Hyd Hose ASM
32	105-0645	1	Hyd Hose ASM
33	105-0646	1	Hyd Hose ASM
35	340-131	1	Fitting-HYD, 90 DEG



Hydraulic Schematic Assembly (continued)

Ref.	Part Number	Qty.	Description
35:1	237-30	1	O-Ring
35:2	237-81	1	O-Ring
36	105-0638	1	Hyd Hose ASM
37	105-0654	1	Hyd Hose ASM
40	92-5821	1	Head-Filter
41	54-0110	1	Filter-Oil, Transmission
42	3334-945	10	Tie-Cable
44	340-4	3	Fitting-HYD, Straight
44:1	237-30	1	O-Ring
44:2	237-79	1	O-Ring
46	340-91	1	Adapter

Ref.	Part Number	Qty.	Description
46:1	237-58	1	O-Ring
46:2	237-146	1	O-Ring
47	108-0884	2	Fitting-Elbow, 90 DEG
48	340-105	1	Fitting-HYD, 90 DEG
48:1	237-80	1	O-Ring
48:2	237-30	1	O-Ring
49	340-2	2	Fitting-HYD, Straight
49:1	237-22	1	O-Ring
49:2	237-42	1	O-Ring
50	2412-34	2	Clamp-Hose

Attachments and Accessories

For 07053 Versa Vac

Product Name	Model/Part
Hose Kit.....	07080
Rubber Finger Deck.....	07081
Combination Deck	07082

Notes:



Count on it.