



Count on it.

Parts Catalog

Versa Vac

Model No. 07053—Serial No. 250000144 and Up



Ordering Replacement Parts

To order replacement parts, please supply the part number, the quantity, and the description of each part desired.

Understanding Reference Numbers

Each identified part in an illustration has a reference number. The reference number for a part also appears in the parts list, along with other information about the part.

This catalog uses two special reference number formats, one to indicate parts in a service assembly and another to indicate the quantity of a given part in an illustration.

Service Assembly Reference Numbers

Parts in service assemblies have reference numbers in the form a:b. The a represents the reference number of the entire service assembly and the b represents a sequential number unique to each part within the service assembly.

For example, a wheel assembly might be identified by reference number 6, the tire by 6:1, the valve by 6:2, and the wheel by 6:3. When you order the assembly identified by reference number 6, you receive all parts identified by reference numbers 6:1, 6:2, and 6:3. However, you may also order any part individually. Reference numbers of this type appear in illustration and in parts lists.

Reference Numbers Indicating Quantity

In an illustration, if a reference number indicates more than one part, the reference number has the form nX y. The n represents the quantity of the part, the X is the multiplication symbol, and the y represents the reference number.

For example, in an illustration, the reference number 2X 37 means that two of the parts identified by reference number 37 are indicated.

List of Abbreviations

AR: as required

ASM: assembly

BBC: blade brake control

BHTF: button head thread forming

CARR: carriage

CCW: counter clockwise

CW: clockwise

DEG: degrees

DPA: Dual Point Adjustment

ECM: electronic control module

EXT: external

FH: flat head

GA: gauge

HD: heavy-duty

HF: hex flange

HH: hex head

HHF: hex head flange

HHFTF: hex head flange thread forming

HJ: hex jam

HLH: hex lag head

HOC: height-of-cut

HSBH: hex socket button head

HSFH: hex socket flat head

HSH: hex socket head

HWH: hex washer head

HWHTF: hex washer head thread forming

HYD: hydraulic

LH: left hand

LP: Liquefied Petroleum Gas

LPG: Liquefied Petroleum Gas

NI: nylon insert

NPTF: national pipe thread fine

PFH: phillips flat head

PPH: phillips pan head

PPHTF: phillips pan head thread forming

PRH: phillips round head

PTH: phillips truss head

PTO: power-take-off

RH: right hand

ROPS: roll-over protection system

RRB: rear roller brush

SFH: slotted fillister head

SHH: slotted hex head

SHWH: slotted hex washer head

SPH: slotted pan head

SQH: square head

SRH: slotted round head

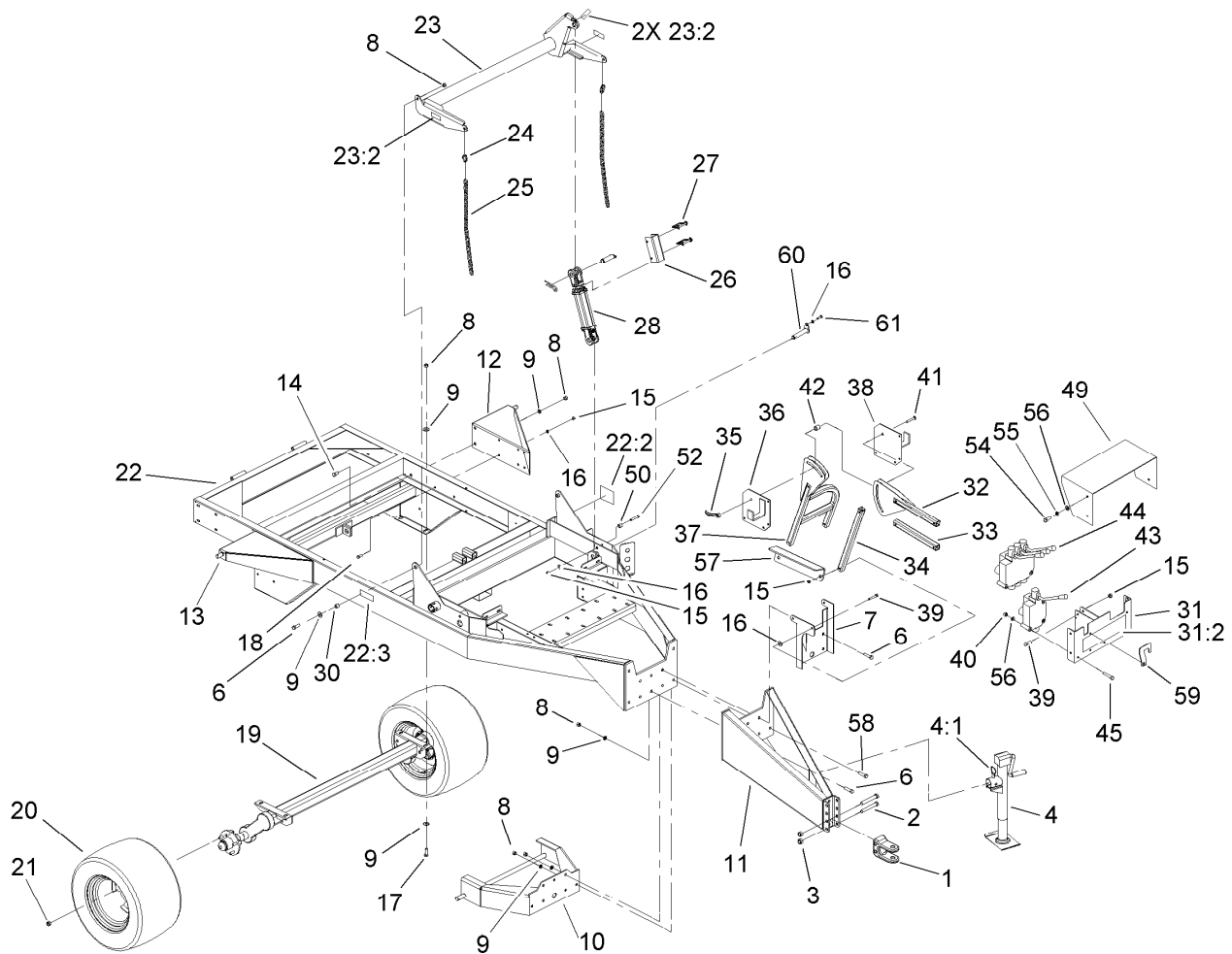
STD: standard

TAP: self tapping

TTH: torx truss head

Contents

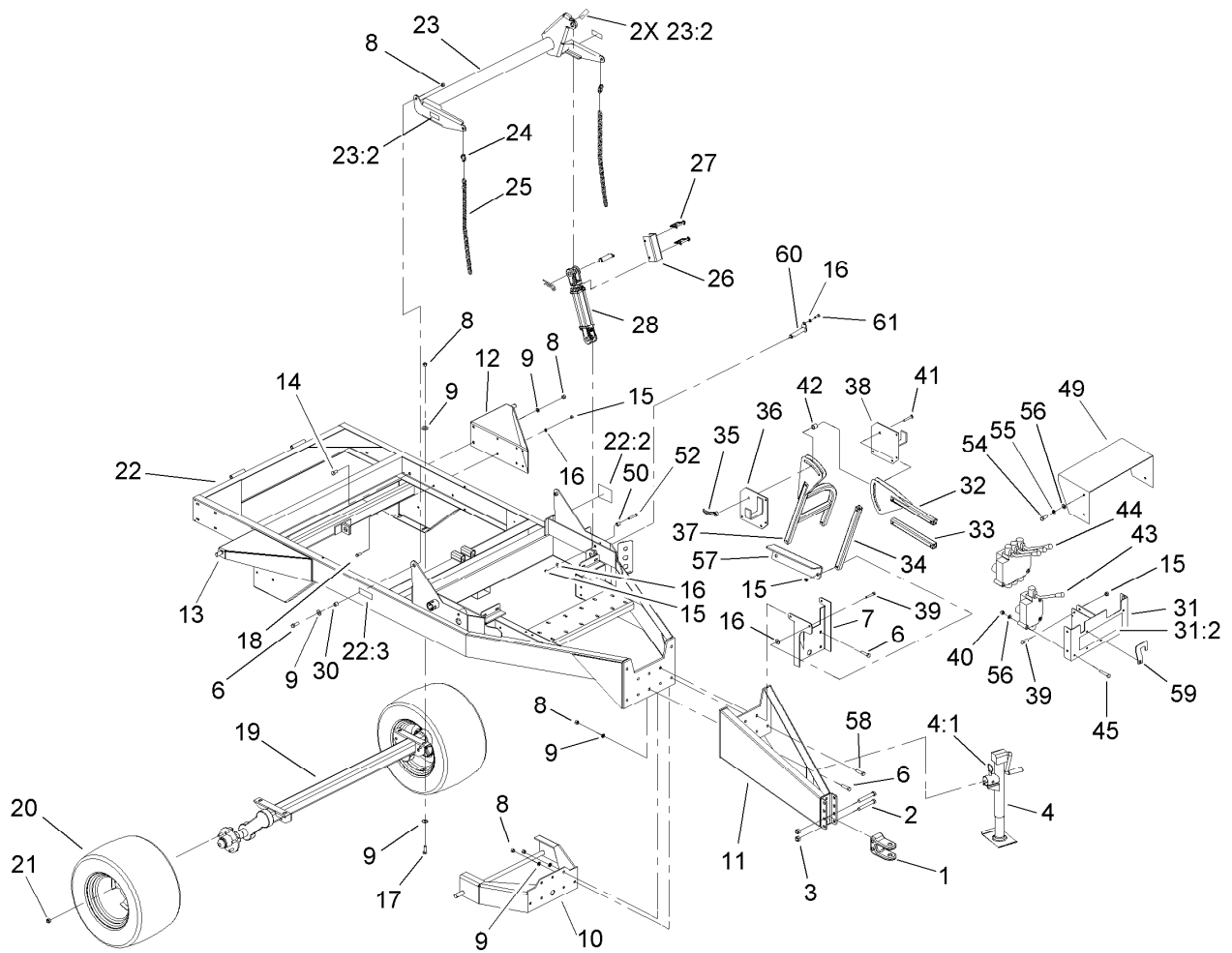
Frame and Axle Assembly	4
Hydraulic Cylinder Assembly No. 107-1180	6
Impeller Assembly	7
Drive Assembly	8
Hydraulic Double Gear Pump Assembly No. 108-0856	10
Power-Take-Off Shaft and Shield Assembly	11
Double Power-Take-Off Shaft Assembly No. SVA10500	12
Sidewall Assembly	13
Left Hand Sidewall Assembly	14
Right Hand Sidewall Assembly	15
Door Assembly	16
Link-Lower Door Assembly	17
Cylinder Assembly	18
Hydraulic Cylinder Assembly No. 107-1360	19
Hydraulic Schematic Assembly	20



Frame and Axle Assembly

Ref.	Part Number	Qty.	Description	Ref.	Part Number	Qty.	Description
1	47-3550-03	1	Hitch-Clevis	23:2	93-6674	3	Decal-Warning
2	327-23	2	Screw-HH	24	CSP15000	2	Link-Quick
3	3296-53	2	Nut-Lock, NI	25	SV139-00	2	Chain-Link
4	106-9699	1	Jack	26	SV158-00-03	1	Channel-Lock
6	325-8	5	Screw-HH	27	PF244-00	2	Pin-Wire, Lock
7	SVA17500-03	1	Base-Stand	28	107-1180	1	Cylinder-HYD
8	3296-23	20	Nut-Lock, NI	30	CS130-00	2	Spacer
9	3256-6	24	Washer-Flat	31	106-0186	1	Mount-Valve
10	SVA11200-03	1	Deck Mount ASM	31:2	106-0183	1	Decal-Panel, Control
11	SV198-00-03	1	Hitch	32	SVA17100-03	1	Stand-Valve
12	SVA11300-03	1	Bracket-Door, Left	33	SVA17200-03	1	Tube-Horizontal
13	SVA11400-03	1	Bracket-Door, Right	34	SVA17000-03	1	Tube-Vertical
14	325-5	4	Screw-HH	35	SVA18500	1	Handle-Locking
15	3296-39	18	Nut-Lock, NI	36	SVA17400-03	1	Hanger-Hose, Right
16	3256-24	29	Washer-Flat	37	SVA16900-03	1	Stand-Valve
17	325-6	4	Screw-HH	38	SVA17900-03	1	Hanger-Hose, Left
18	323-6	8	Screw-HH	39	323-11	9	Screw-HH
19	SVP20000	1	Axle-Torflex	40	3296-29	6	Nut-Lock, NI
20	SVP15000	2	Tire And Wheel ASM	41	3231-31	1	Screw-CARR
21	242-50	10	Nut-Lug	42	SVA17700	1	Spacer
22	106-0189	1	Frame	43	106-0168	1	Valve-Control, Single Spool
22:2	106-0167	1	Decal-Caution	43:1	107-1551	1	Seal Kit ●
22:3	106-0162	2	Decal-Caution, Stay Clear (Ce)	44	106-0169	1	Valve-Control, Three Spool
23	106-0190	1	Arm-Lift	44:1	107-1550	1	Seal Kit ●
				45	322-13	6	Screw-HH

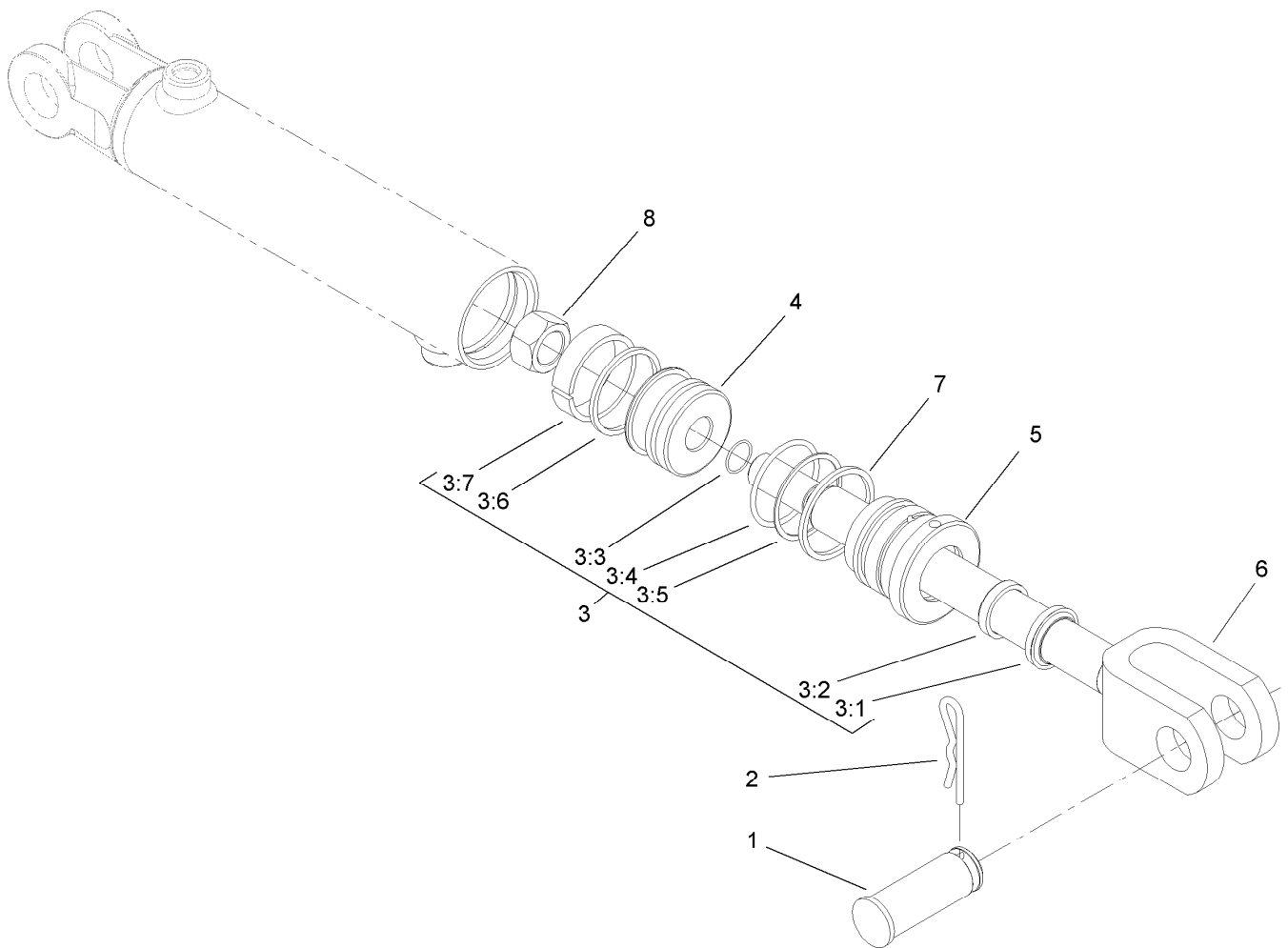
● Not illustrated



Frame and Axle Assembly (continued)

<i>Ref.</i>	<i>Part Number</i>	<i>Qty.</i>	<i>Description</i>	<i>Ref.</i>	<i>Part Number</i>	<i>Qty.</i>	<i>Description</i>
49	106-0171-03	1	Guard-Hose	57	105-4855-03	1	Support
50	SV136-00-03	1	Roller-Chain	58	325-10	6	Screw-HH
52	325-12	1	Screw-HH	59	105-4920-03	1	Lockout-Valve
54	322-2	4	Screw-HH	60	107-1186	1	Pin
55	3253-4	4	Washer-Lock	61	323-7	1	Screw-HH
56	3256-23	10	Washer-Flat				

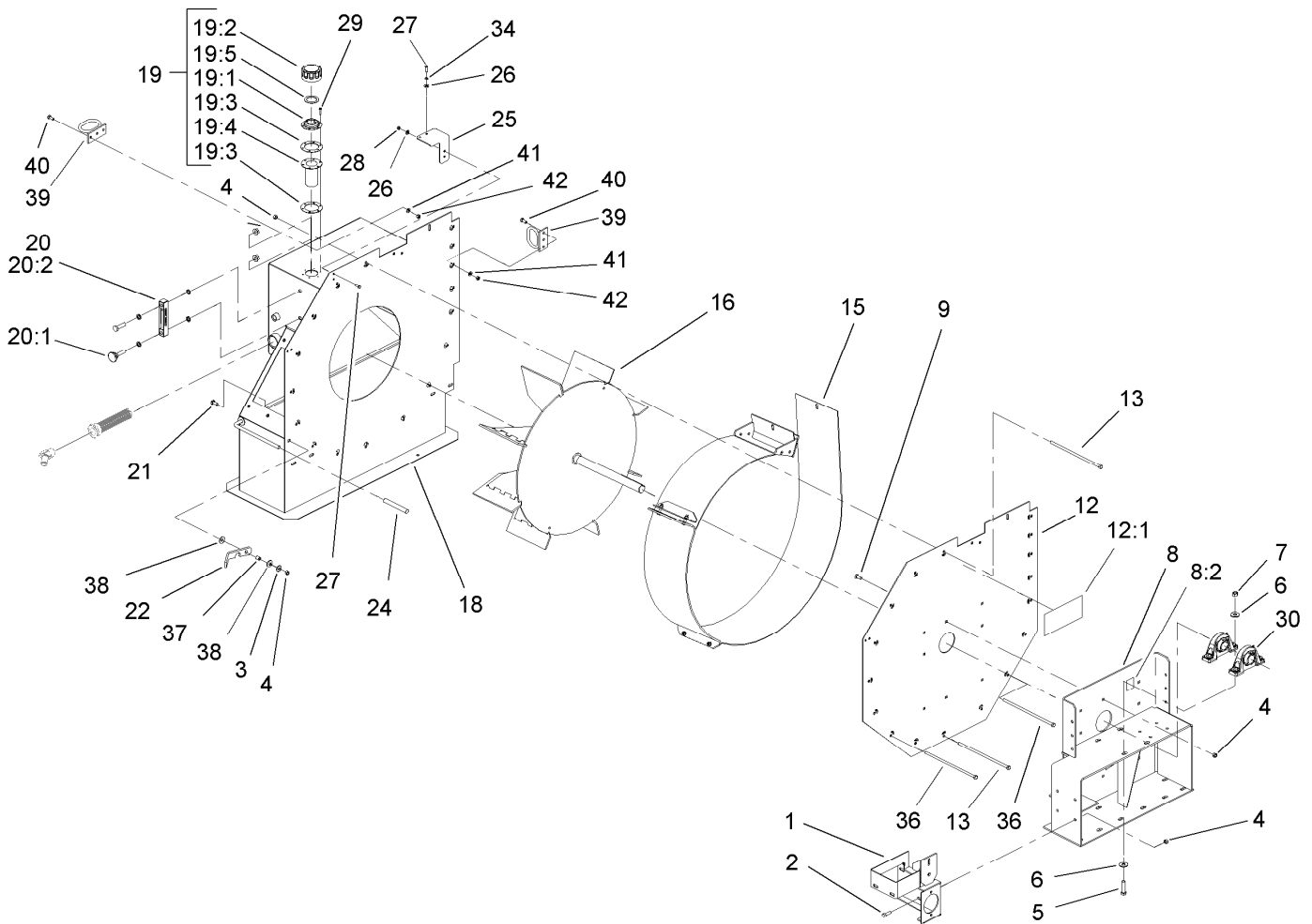
● Not illustrated



Hydraulic Cylinder Assembly No. 107-1180

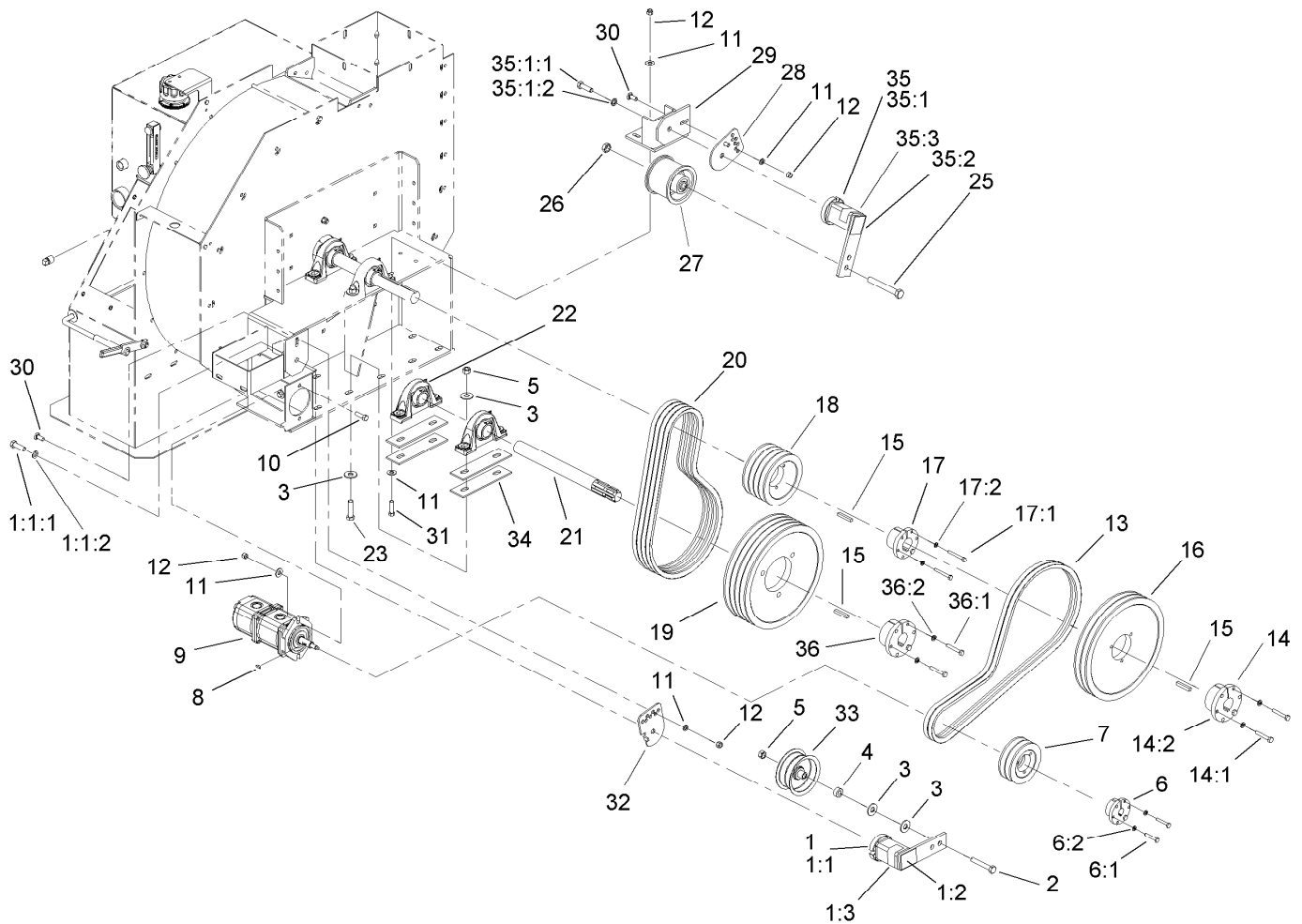
<i>Ref.</i>	<i>Part Number</i>	<i>Qty.</i>	<i>Description</i>
1	107-1182	2	Pin-Clevis
2	9335064	2	Pin-Cotter, Hair
3	107-1183	1	Seal Kit
3:1		1	Wiper ●
3:2		1	U-Cup ●
3:3		1	Seal-Dust ●
3:4		1	Seal-Dust ●
3:5		1	Back-Up Ring ●
3:6		1	Capseal ●
3:7		1	Ring-Wear ●
4		1	Piston ●
5		1	Head ●
6		1	Rod ASM ●
7		1	Ring-Retaining ●
8		1	Nut-Lock ●

● Not serviced separately



Impeller Assembly

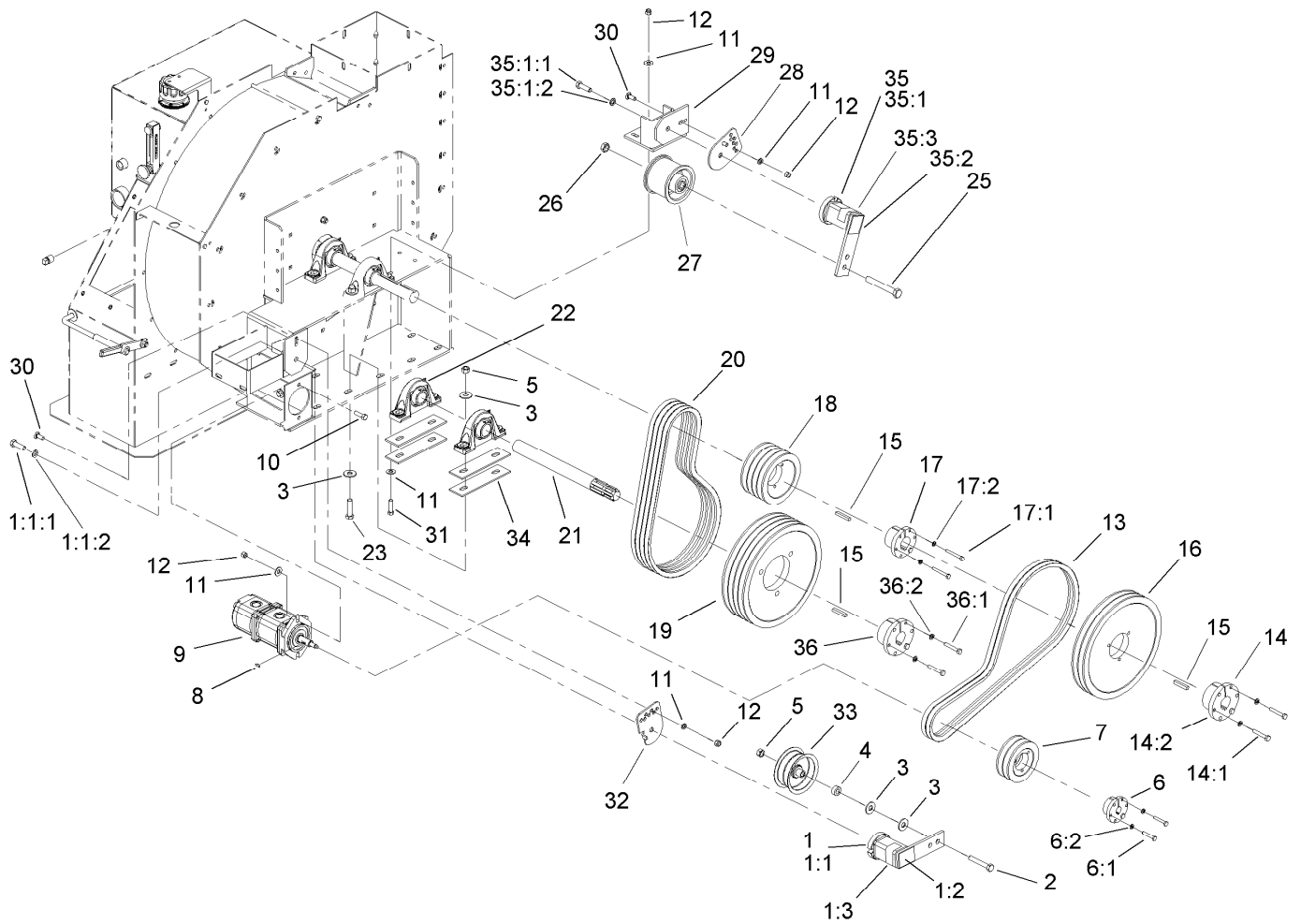
<i>Ref.</i>	<i>Part Number</i>	<i>Qty.</i>	<i>Description</i>	<i>Ref.</i>	<i>Part Number</i>	<i>Qty.</i>	<i>Description</i>
1	108-0894-01	1	Mount-Pump	19:5	76-1720	1	Gasket-Cap, Filler
2	323-7	4	Screw-HH	20	SVB14700	1	Thermometer ASM
3	3256-4	4	Washer-Flat	20:1	108-0852	1	Probe-Temp
4	104-8301	30	Nut-Flange, NI	20:2	108-0853	1	Body-Temp
5	325-8	4	Screw-HH	21	3231-28	1	Screw-CARR
6	3256-6	8	Washer-Flat	22	106-0236-01	1	Latch
7	3296-23	4	Nut-Lock, NI	24	PF225-00	1	Cover-Handle
8	106-0191	1	Mount-Drive	25	SVB15900-01	1	Mount-Filter
8:2	105-4586	1	Decal-Shield	26	3256-22	6	Washer-Flat
9	3231-2	8	Bolt-CARR	27	321-4	4	Screw-HH
12	106-0206	1	Panel-Back	28	3296-42	2	Nut-Lock, NI
12:1	66-6140	1	Decal	29	32144-107	6	Screw
13	106-0184	15	Screw-HH	30	106-0332	2	Bearing-Block, Pillow
15	107-1359	1	Band ASM	34	3253-3	2	Washer-Lock
16	107-1431-01	1	Impeller ASM	36	105-4865	2	Screw-HH
18	SV305-00-01	1	Funnel ASM	37	92-9025	1	Spacer
19	95-7004	1	Filler Cap ASM	38	3290-473	2	Washer-Belleville
19:1	353-961	1	Flange	39	104-0028	2	Guide-Hose
19:2	353-962	1	Cap ASM	40	322-5	4	Screw-HH
19:3	353-963	2	Gasket	41	3256-23	4	Washer-Flat
19:4	62-2610	1	Strainer-Cap, Filler	42	3296-29	4	Nut-Lock, NI



Drive Assembly

Ref.	Part Number	Qty.	Description	Ref.	Part Number	Qty.	Description
1	105-0667	1	Idler Tensioner ASM	17	106-0360	1	Pulley Bushing ASM
1:1		1	Tensioner-Idler ●	17:1	321-11	3	Screw-HH
1:1:1	33116-040	1	Screw-HH	17:2	3253-3	3	Washer-Lock
1:1:2	3253-7	1	Washer-Lock	18	106-0355	1	Pulley
1:2	105-0668	1	Decal-Align	19	106-0356	1	Pulley
1:3	105-0669	1	Decal-Angle	20	SBC17000	4	V-Belt
2	325-12	1	Screw-HH	21	SVB13000	1	Shaft-Input
3	3256-6	10	Washer-Flat	22	106-0332	2	Bearing-Block, Pillow
4	GF213-00	1	Spacer	23	325-10	4	Screw-HH
5	3296-23	5	Nut-Lock, NI	25	3214-15	1	Screw-HH
6	106-0357	1	Bushing-Pulley	26	3220-6	1	Nut-Jam
6:1	108-0854	3	Screw-HSH	27	105-4821	1	Idler-Pulley
6:2	3253-3	3	Washer-Lock	28	105-4839	1	Stabilizer-Tensioner
7	106-0352	1	Pulley	29	SV286-00-01	1	Bracket-Looney
8	3257-32	1	Key-Woodruff	30	3231-25	2	Bolt-CARR
9	108-0856	1	Pump-HYD	31	323-8	4	Screw-HH
10	323-7	6	Screw-HH	32	105-4835	1	Stabilizer-Tensioner
11	3256-4	12	Washer-Flat	33	FBJ11100	1	Pulley-Idler
12	3296-39	8	Nut-Lock, NI	34	SVB19500-01	4	Shim
13	SVB13600	2	V-Belt	35	106-0334	1	Idler Tensioner ASM
14	106-0358	1	Pulley Bushing ASM	35:1		1	Tensioner-Idler, Modified ●
14:1	322-10	3	Screw-HH	35:1:1	33116-040	1	Screw-HH
14:2	3253-4	3	Washer-Lock	35:1:2	3253-7	1	Washer-Lock
15	61-004-0451	3	Key-Square	35:2	105-0668	1	Decal-Align
16	106-0353	1	Pulley	35:3	105-0669	1	Decal-Angle

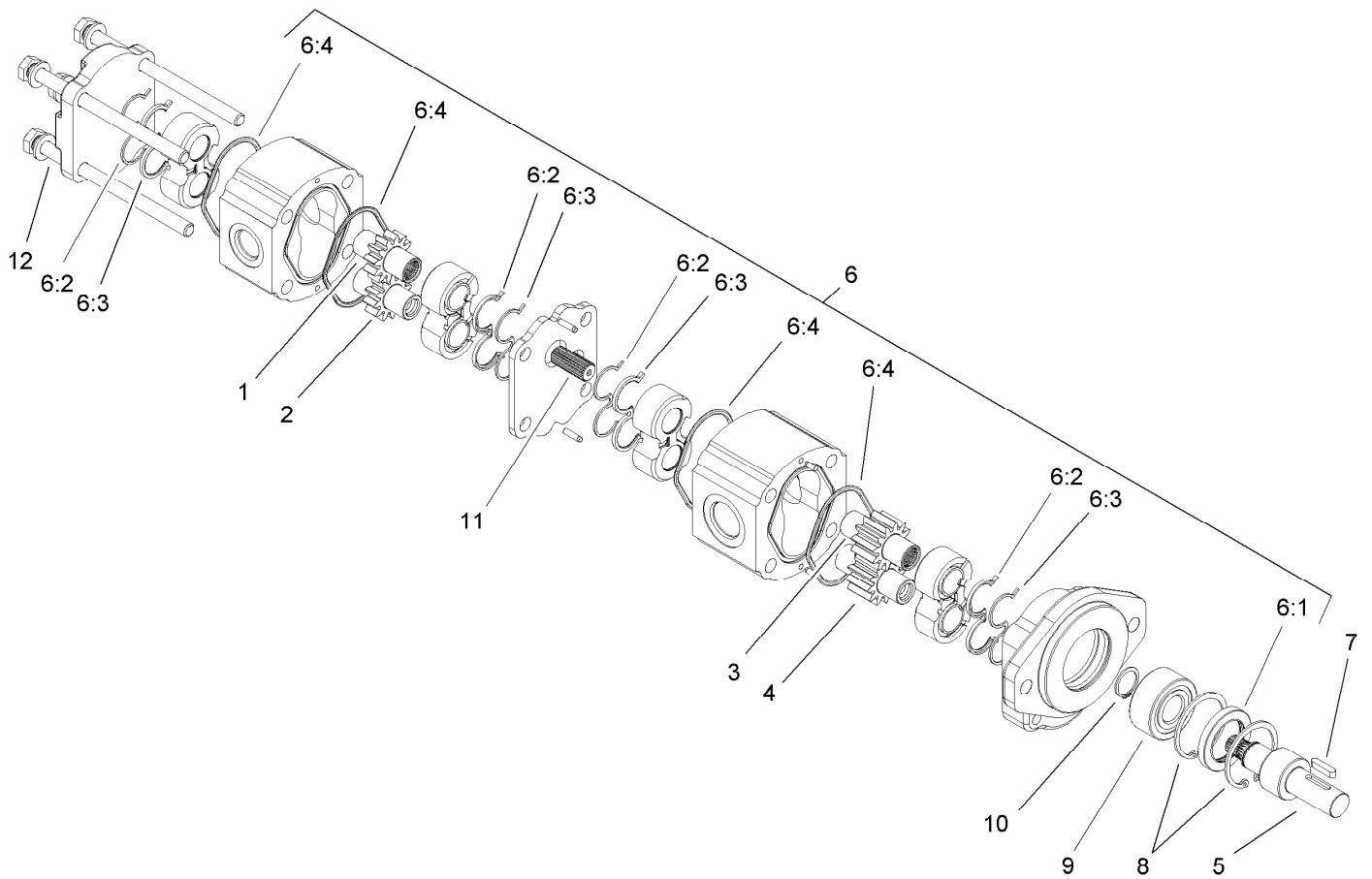
● Not serviced separately



Drive Assembly (continued)

<i>Ref.</i>	<i>Part Number</i>	<i>Qty.</i>	<i>Description</i>	<i>Ref.</i>	<i>Part Number</i>	<i>Qty.</i>	<i>Description</i>
36	106-0362	1	Bushing-Pulley	36:1	325-11	3	Screw-HH
				36:2	3253-7	3	Washer-Lock

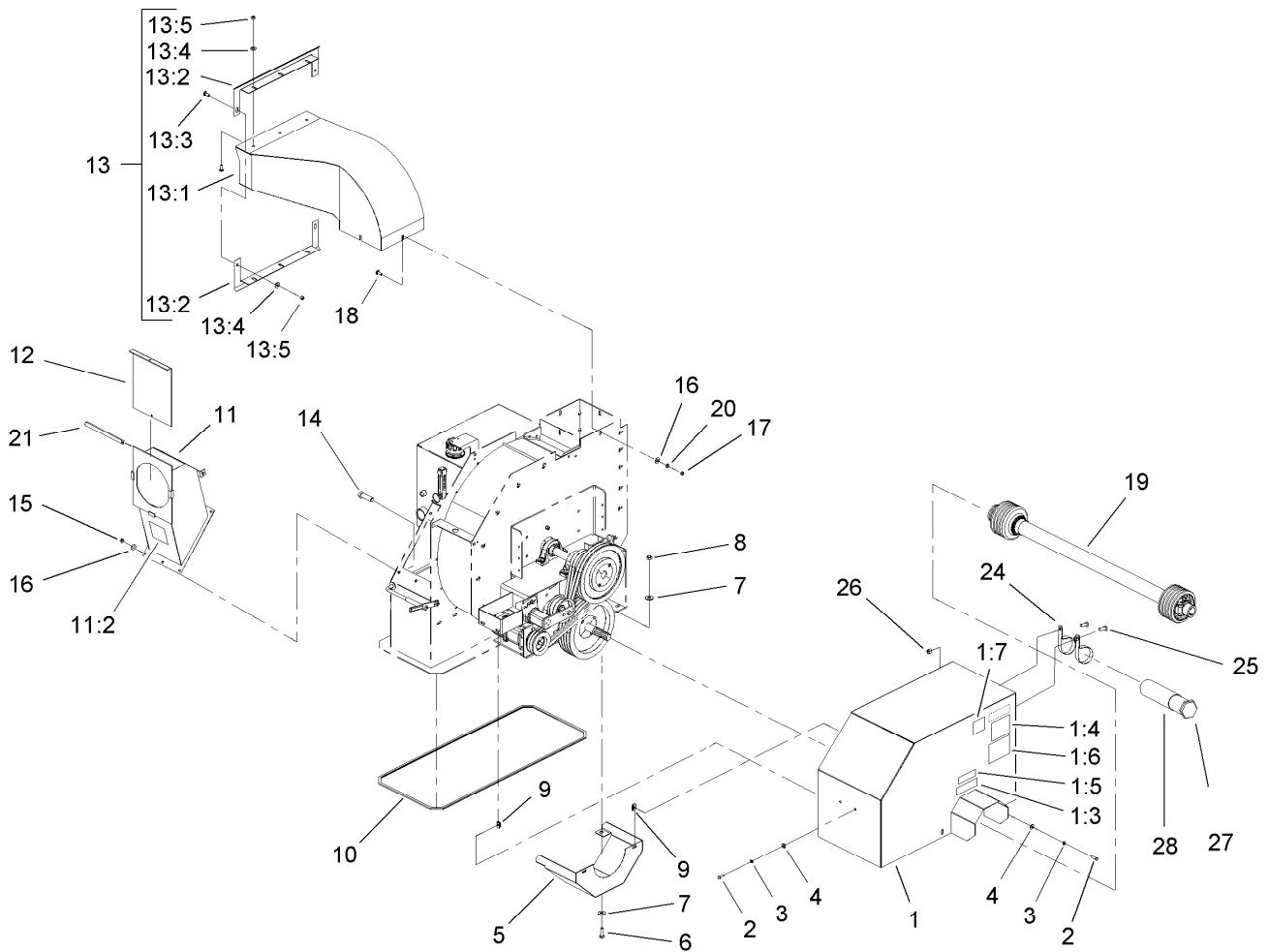
● Not serviced separately



Hydraulic Double Gear Pump Assembly No. 108-0856

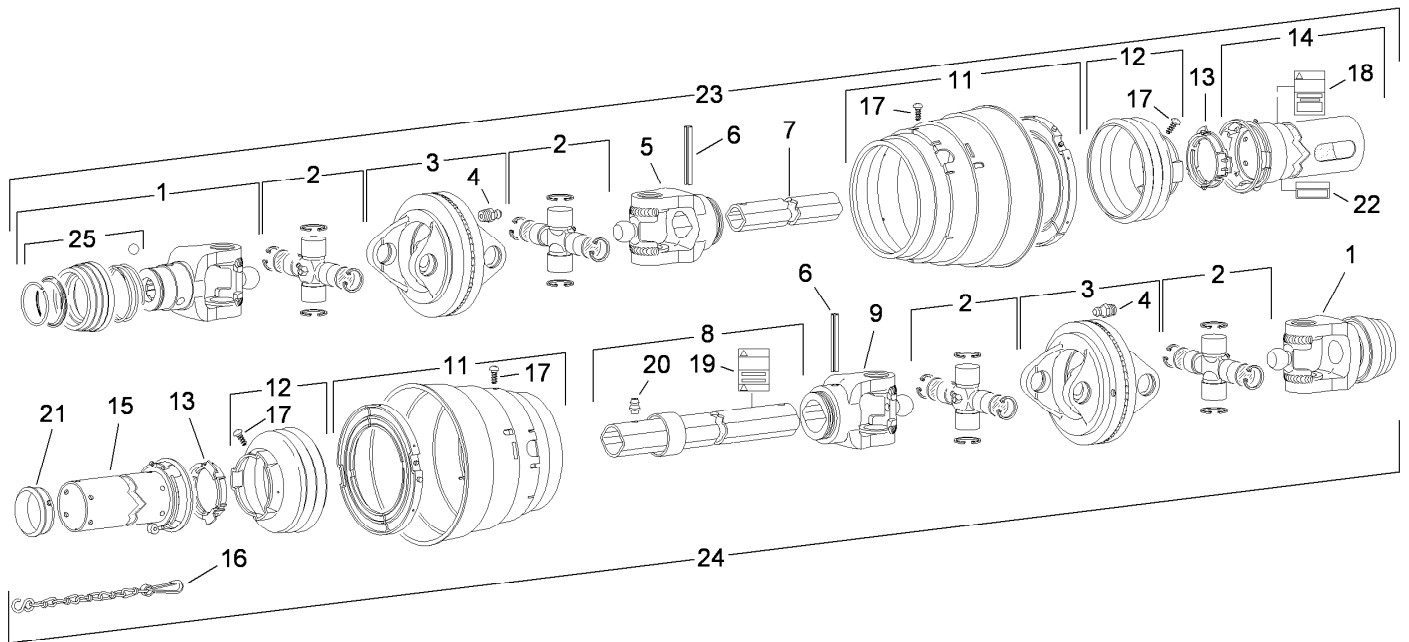
Ref.	Part Number	Qty.	Description
1		1	Gear-Drive ●
2		1	Gear-Driven ●
3		1	Gear-Drive ●
4		1	Gear-Driven ●
5		1	Shaft ●
6	108-2438	1	Seal Kit
6:1		1	Seal-Lip ●
6:2		4	Seal-Back Up ●
6:3		4	Seal-Channel ●
6:4		4	Seal-Section ●
7		1	Key ●
8		2	Ring-Retaining ●
9		1	Bearing ●
10		1	Ring-Retaining ●
11		1	Shaft ●
12		4	Screw ●

● Not serviced separately



Power-Take-Off Shaft and Shield Assembly

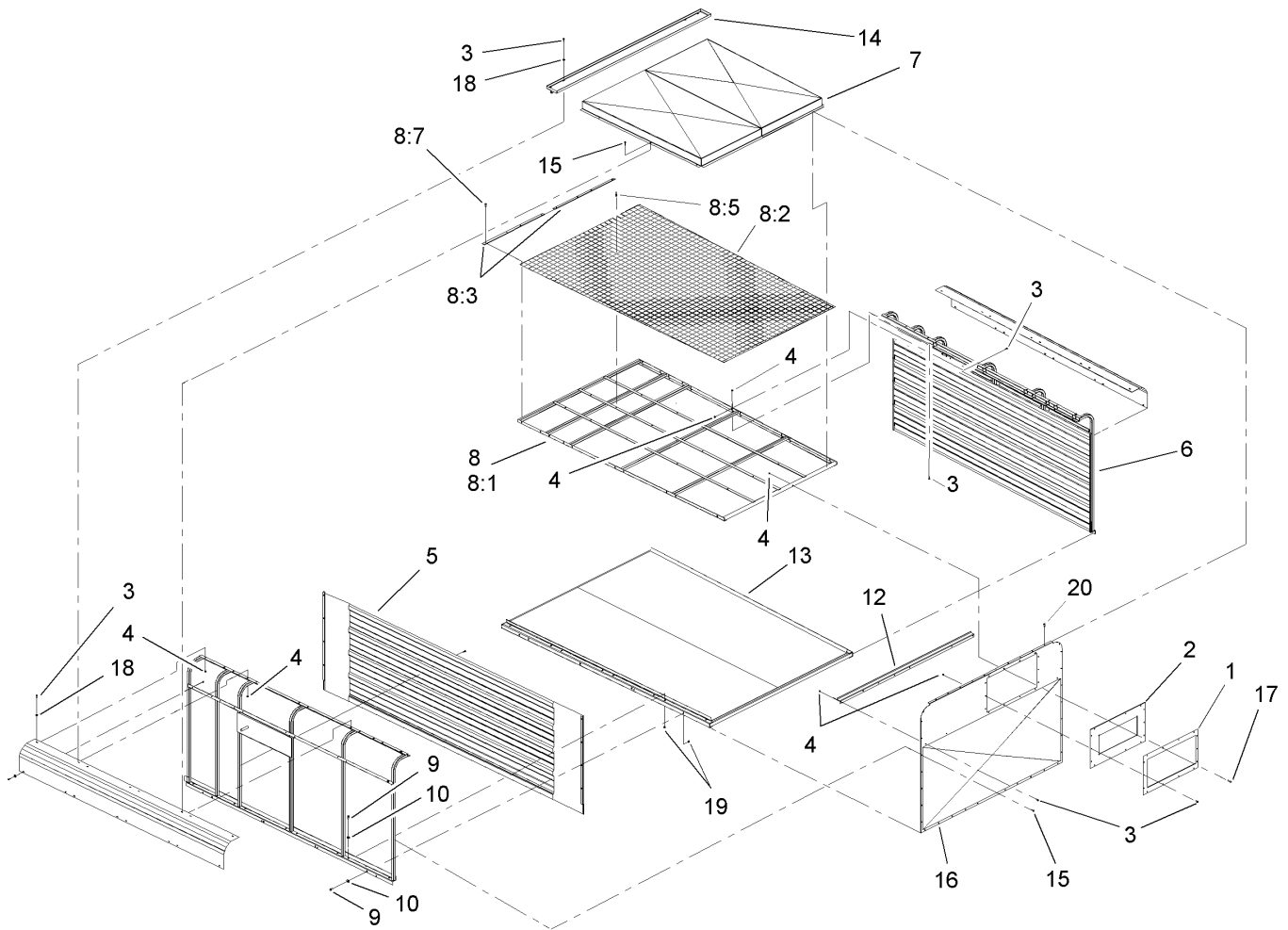
<i>Ref.</i>	<i>Part Number</i>	<i>Qty.</i>	<i>Description</i>	<i>Ref.</i>	<i>Part Number</i>	<i>Qty.</i>	<i>Description</i>
1	106-0193	1	Shield-Drive	13:1	SV216-00-01	1	Transition-Spout
1:3	105-0628	1	Decal-Caution, U-Joint	13:2	SVA10200-01	2	Seal-Dust
1:4	105-4587	1	Decal-Caution, Ce	13:3	3231-2	8	Bolt-CARR
1:5	105-0627	1	Decal-Caution	13:4	3256-24	8	Washer-Flat
1:6	106-0163	1	Decal-Danger, Blowers	13:5	3296-39	8	Nut-Lock, NI
1:7	105-4586	1	Decal-Shield	14	3231-2	6	Bolt-CARR
2	322-5	6	Screw-HH	15	3296-39	6	Nut-Lock, NI
3	3253-4	6	Washer-Lock	16	3256-4	10	Washer-Flat
4	3256-23	6	Washer-Flat	17	3217-7	4	Nut-Hex
5	105-4842-01	1	Guard-Pulley	18	3231-2	4	Bolt-CARR
6	325-6	2	Screw-HH	19	SVA10500	1	Shaft-PTO, Double
7	3256-6	4	Washer-Flat	20	3253-21	4	Washer-Lock
8	3296-23	2	Nut-Lock, NI	21	106-0207	1	Trim-Chute Vac
9	CSP11700	4	Nut-Thin, Tinnerman	24	2412-133	2	R-Clamp
10	105-4843	1	Trim	25	323-5	2	Screw-HH
11	106-0192	1	Chute-Vac	26	3296-39	2	Nut-Lock, NI
11:2	106-0166	1	Decal-Danger, Blower	27	104-7048	1	Cap-Housing
12	SV143-00-01	1	Door-Hose	28	104-7050	1	Tube-Manual
13	SVA14900	1	Spout ASM				



Double Power-Take-Off Shaft Assembly No. SVA10500

Ref.	Part Number	Qty.	Description
1	120-6119	1	Yoke ASM
2	SVA10501	4	Cross And Bearing Kit
3	120-6120	2	Double Yoke
4	84-6290	2	Zerk-Grease
5	SVA10508	1	Yoke-Inboard, Tractor End
6	105-2927	2	Pin-Spring
7	120-6121	1	Tube-Inner
8	SVA10511	1	Tube-Outer
9	SVA10509	1	Yoke-Inboard, Implement End
11	120-6122	1	Guard And Bearing ASM
12	120-6123	1	Guard Cone,3 Rib
13	105-2936	2	Bearing-Ring
14	SVA10502	1	Shield-Outer
15	SVA10503	1	Shield-Inner
16	77-4760	1	Chain-Safety
17	84-6360	14	Screw
18	92-7936	1	Decal-Warning
19	92-7937	1	Decal-Warning
20	84-6370	1	Zerk-Grease
21		1	Support-Bearing ●
22		1	Decal-Lubrication ●
23	SVA1050T	1	Shaft-Double Cv, PTO (Tractor Half)
24	SVA1050I	1	Shaft-Double Cv, PTO (Implement Half)
25	120-6124	1	Collar Kit ASM

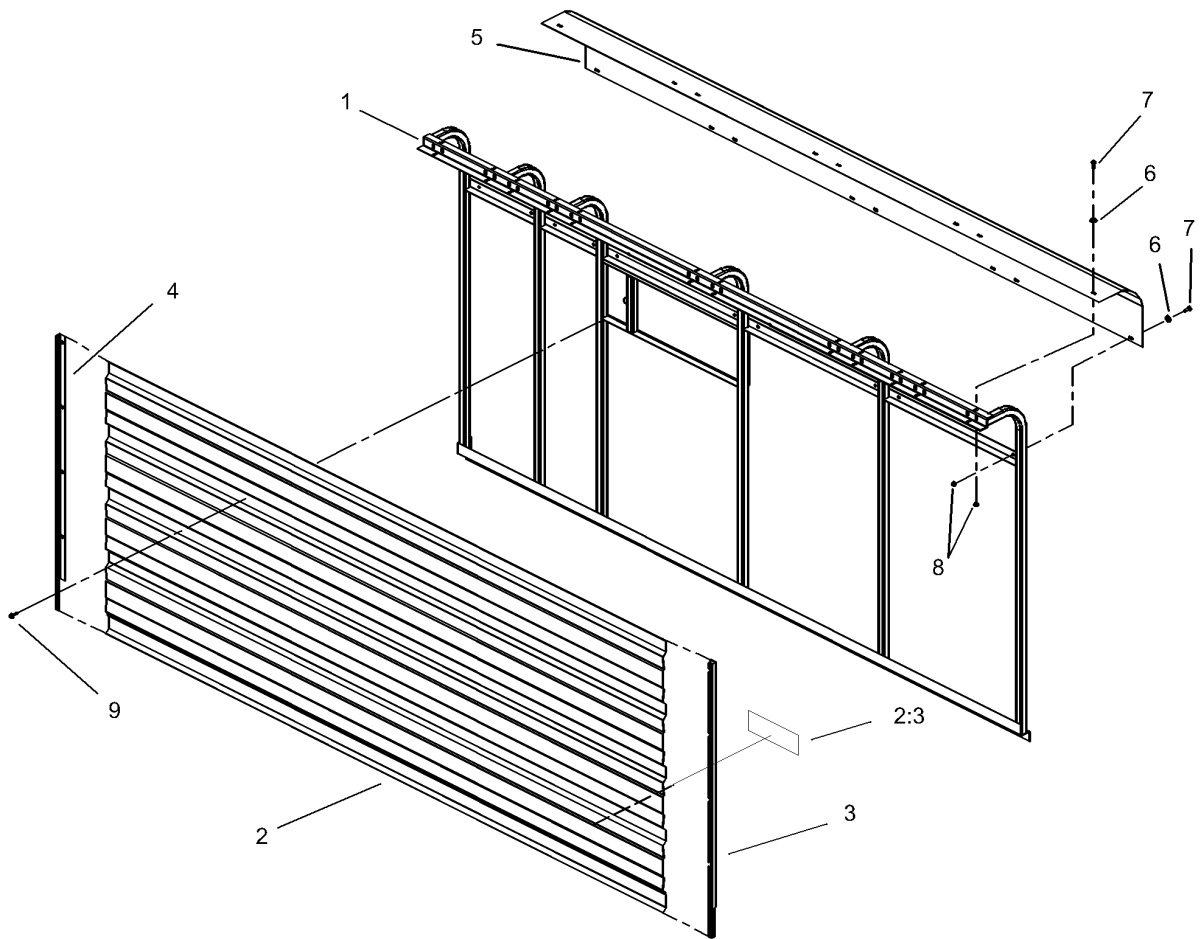
● Not serviced separately



Sidewall Assembly

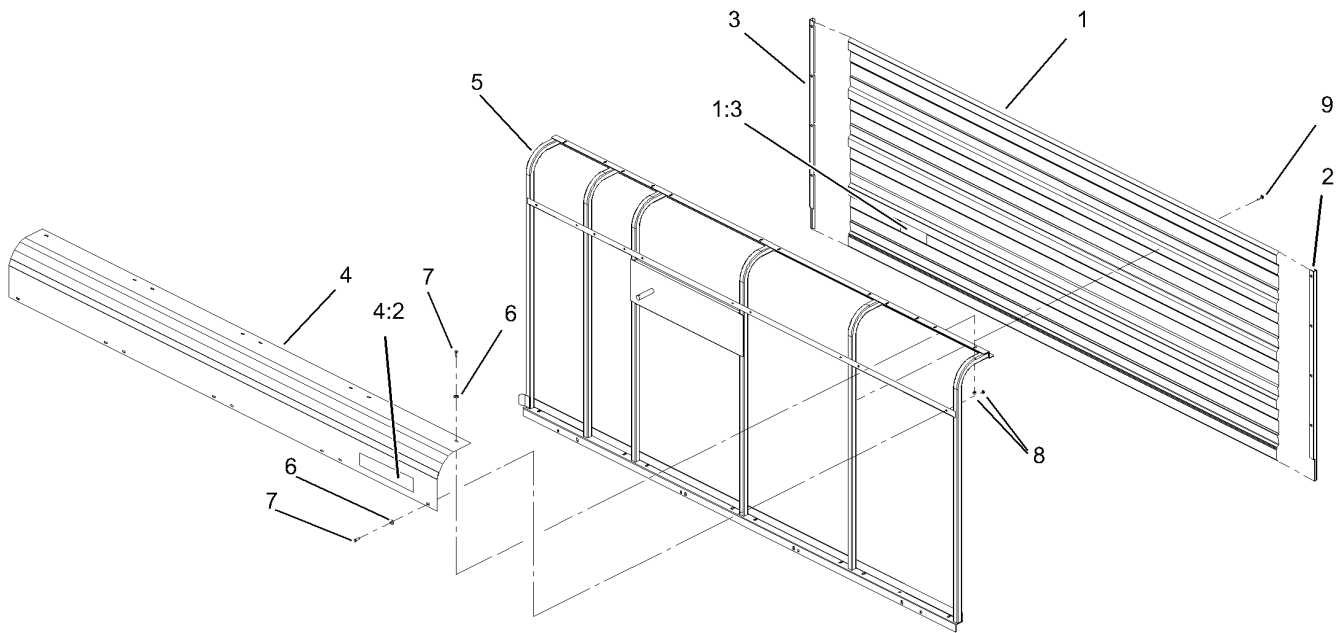
Ref.	Part Number	Qty.	Description
1	107-1362-01	1	Plate
2	107-1361	1	Gasket-Dust
3	321-4	69	Screw-HH
4	3296-42	73	Nut-Lock, NI
5		1	LH Sidewall ASM ●
6		1	RH Sidewall ASM ●
7	107-1495-01	1	Cap-Dust
8		1	Roof-Trailer ●
8:1	VT306-00-01	1	Roof Frame ASM
8:2	VT307-00	2	Screen-Roof
8:3	VT308-00-01	2	Trim-Edge
8:5	3269-21	15	Rivet-Pop
8:7	105-0618	8	Screw
9	323-6	24	Screw-HH
10	3256-24	24	Washer-Flat
12	SVA12000-01	1	Brace-Front
13	VT301-00-03	1	Frame-Floor
14	SVA11900-01	1	Hinge Mount ASM
15	105-0618	28	Screw
16	107-1363-01	1	Sheet-Trailer, Front
17	321-10	4	Screw-HH
18	3256-22	56	Washer-Flat
19	3290-357	24	Nut-HHF, Whiz
20	105-4848	14	Screw

● Not serviced separately



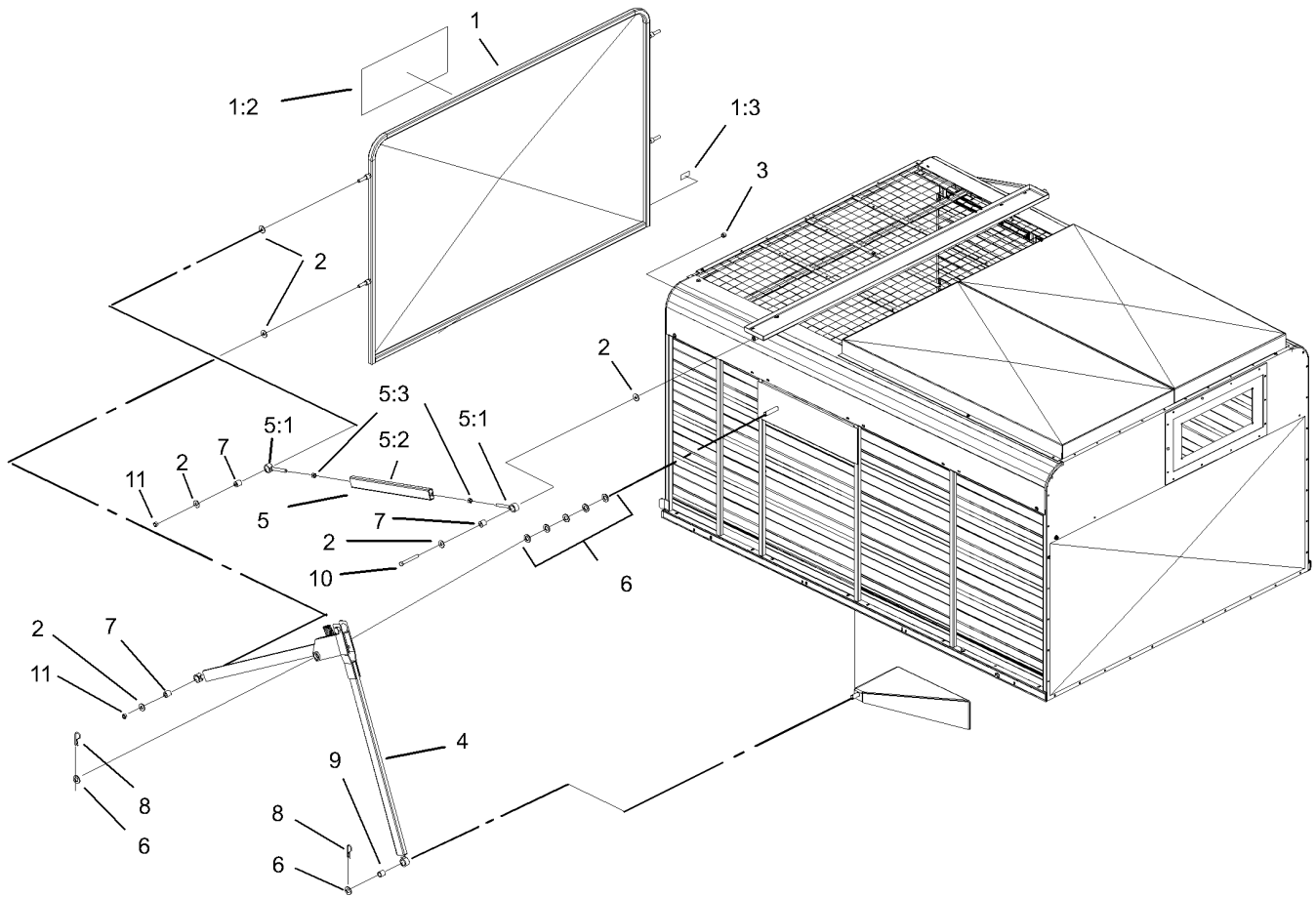
Left Hand Sidewall Assembly

<i>Ref.</i>	<i>Part Number</i>	<i>Qty.</i>	<i>Description</i>
1	VT203-0L-01	1	Left Wall ASM
2	106-0176	1	Sheet-Sidewall, LH
2:3	106-0162	1	Decal-Caution, Stay Clear (Ce)
3	VT130-0L-01	1	Trim-Enclosure, Left
4	106-0175	1	Corner-Roof, LH
5	VT130-0R-01	1	Trim-Enclosure, Right
6	3256-22	8	Washer-Flat
7	321-4	8	Screw-HH
8	3296-42	8	Nut-Lock, NI
9	105-0618	24	Screw



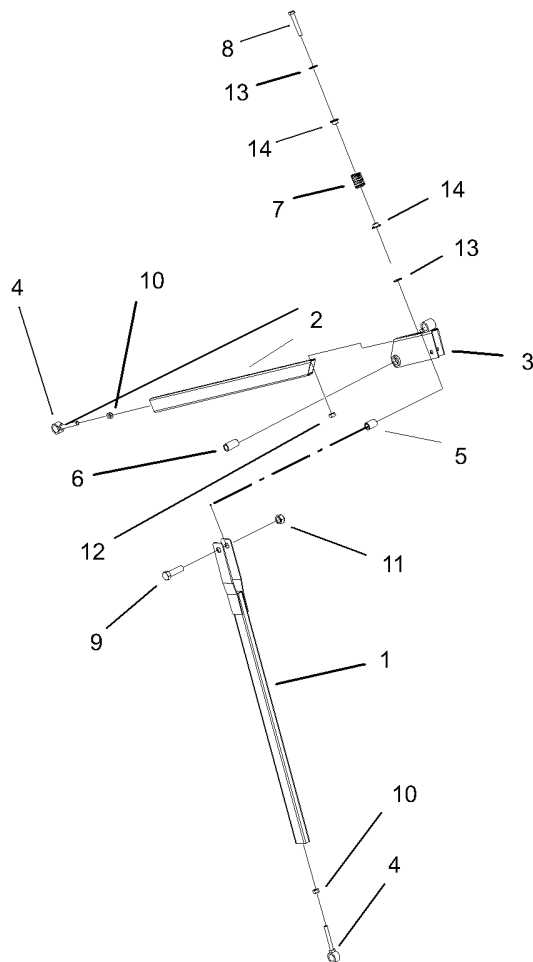
Right Hand Sidewall Assembly

<i>Ref.</i>	<i>Part Number</i>	<i>Qty.</i>	<i>Description</i>
1	106-0174	1	Sheet-Sidewall, RH
1:3	106-0162	1	Decal-Caution, Stay Clear (Ce)
2	VT130-0R-01	1	Trim-Enclosure, Right
3	VT130-0L-01	1	Trim-Enclosure, Left
4	106-0173	1	Corner-Roof, RH
4:2	105-0738	1	Decal-RH
5	VT203-0R-01	1	Right Wall ASM
6	3256-22	8	Washer-Flat
7	321-4	8	Screw-HH
8	3296-42	8	Nut-Lock, NI
9	105-0618	24	Screw



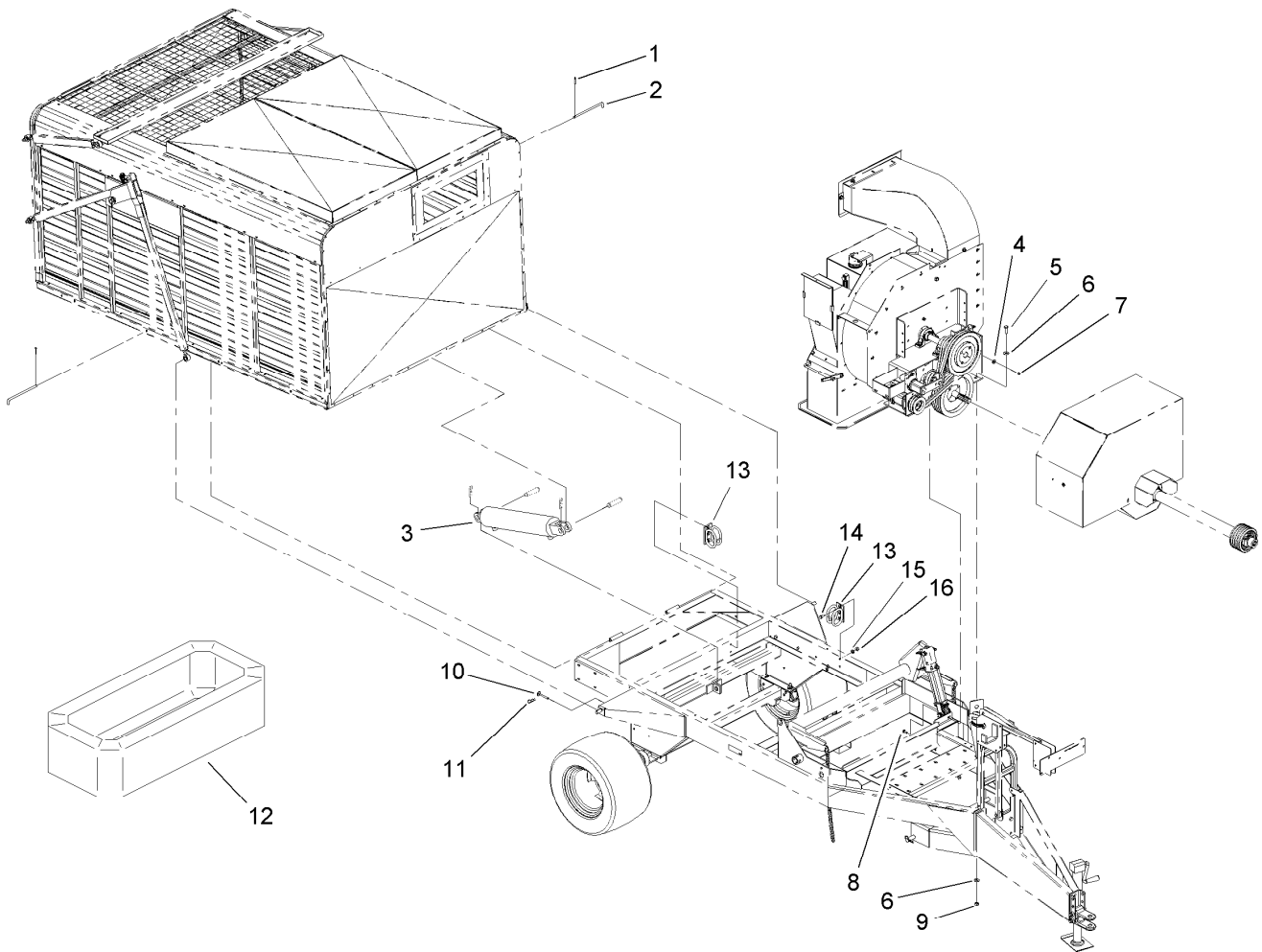
Door Assembly

Ref.	Part Number	Qty.	Description
1	106-0194	1	Door-Trailer
1:2	67-7920	1	Decal
1:3	106-0162	1	Decal-Caution, Stay Clear (Ce)
2	3256-5	12	Washer-Flat
3	3296-23	2	Nut-Lock, NI
4	SVA15100	2	Lower Link Door ASM
5	SVA15000	2	Upper Link Door ASM
5:1	SVA11700-01	1	Link ASM
5:2	SVA12200	2	Pivot-Hinge
5:3	3217-9	2	Nut-HH
6	3256-28	14	Washer-Flat
7	SVA12700	6	Bushing
8	9335064	4	Pin-Cotter, Hair
9	SVA12800	2	Bushing
10	325-17	2	Screw-HH
11	32153-5	4	Nut-Hex



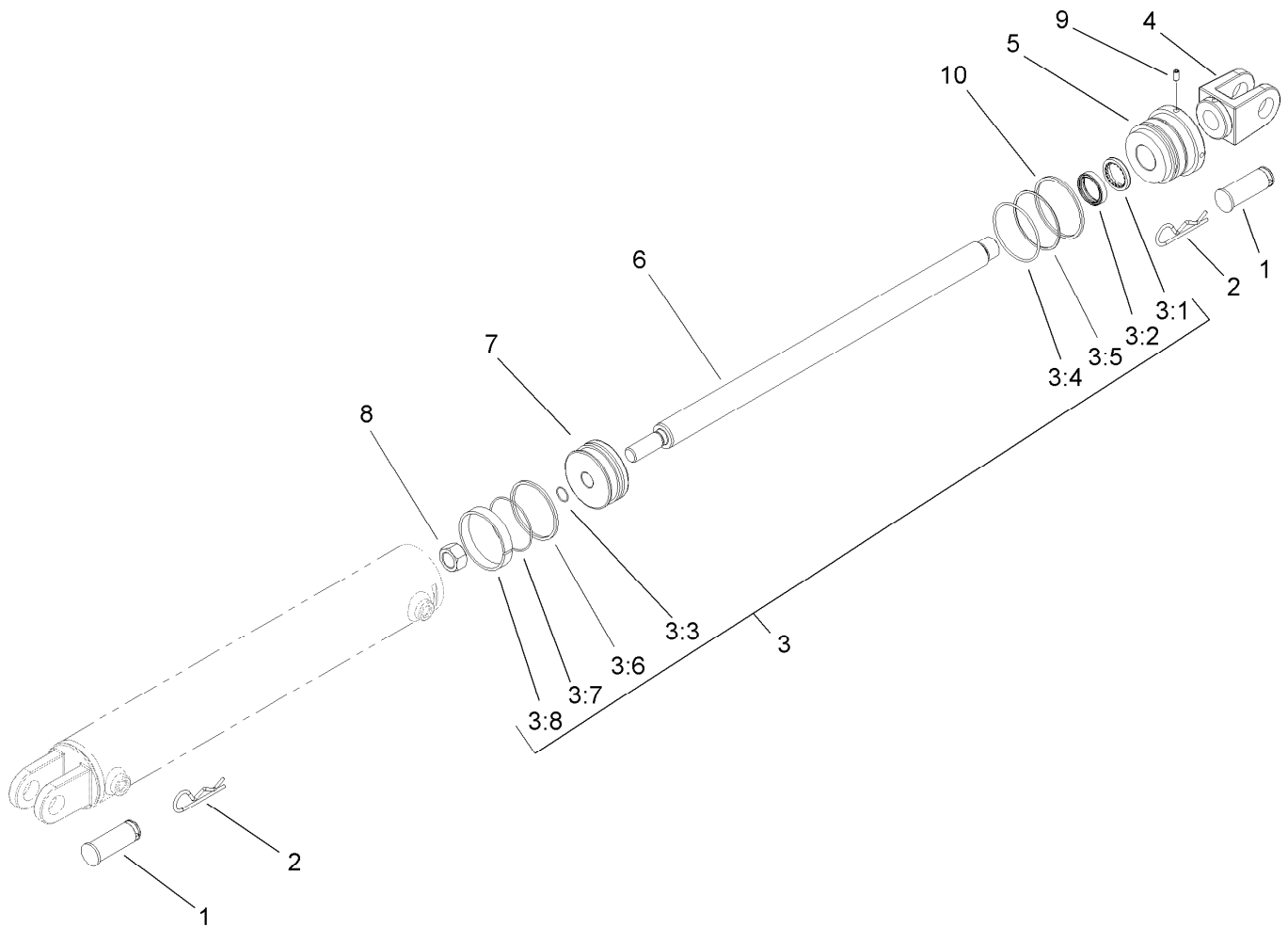
Link-Lower Door Assembly

<i>Ref.</i>	<i>Part Number</i>	<i>Qty.</i>	<i>Description</i>
1	SVA11800-01	1	Pull Arm ASM
2	SVA11600-01	1	Lower Linkage ASM
3	SVA12100-01	1	Mount-Bracket
4	SVA12200	2	Pivot-Hinge
5	SVA12900	1	Bushing
6	SVA13000	1	Bushing
7	GF206-00	1	Spring-Compression
8	325-13	1	Screw-HH
9	328-3	1	Screw-HH
10	3217-9	2	Nut-HH
11	3296-51	1	Nut-Lock, NI
12	3296-23	1	Nut-Lock, NI
13	3256-26	2	Washer-Flat
14	SVA13300	2	Bushing-Flange



Cylinder Assembly

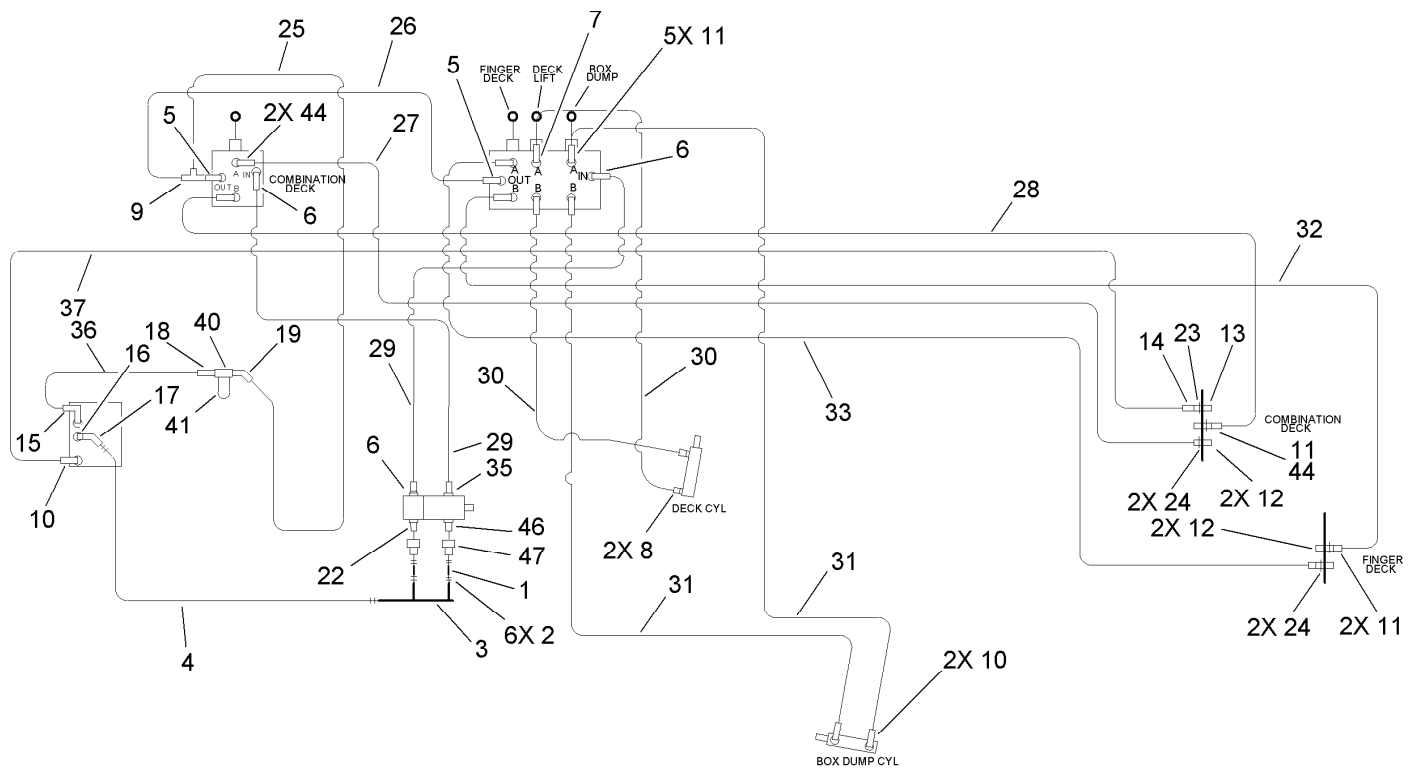
<i>Ref.</i>	<i>Part Number</i>	<i>Qty.</i>	<i>Description</i>
1	3272-22	2	Pin-Cotter
2	PB114-00	2	Pin-Hinge
3	107-1360	1	HYD Cylinder ASM
4	3256-4	4	Washer-Flat
5	325-6	5	Screw-HH
6	3256-6	10	Washer-Flat
7	3296-39	4	Nut-Lock, NI
8	3231-25	4	Bolt-CARR
9	3296-23	5	Nut-Lock, NI
10	SVA12600	2	Door Pin ASM
11	3290-355	2	Pin-Hair
12	SVP15100	1	Ring-Canvas
13	99-5621	2	Guide-Hose
14	322-5	4	Screw-HH
15	3256-23	4	Washer-Flat
16	3296-29	4	Nut-Lock, NI



Hydraulic Cylinder Assembly No. 107-1360

Ref.	Part Number	Qty.	Description
1	107-1182	2	Pin-Clevis
2	9335064	2	Pin-Cotter, Hair
3	108-2435	1	Seal Kit
3:1		1	Wiper ●
3:2		1	Seal ASM ●
3:3		1	Seal-Dust ●
3:4		1	Seal-Dust ●
3:5		1	Ring-Back Up ●
3:6		1	Seal ASM ●
3:7		1	Seal-Dust ●
3:8		1	Ring-Wear ●
4	108-2436	1	Clevis-Rod
5		1	Head ●
6		1	Rod ●
7		1	Piston ●
8		1	Nut-Lock ●
9		1	Screw-Set ●
10		1	Ring-Retaining ●

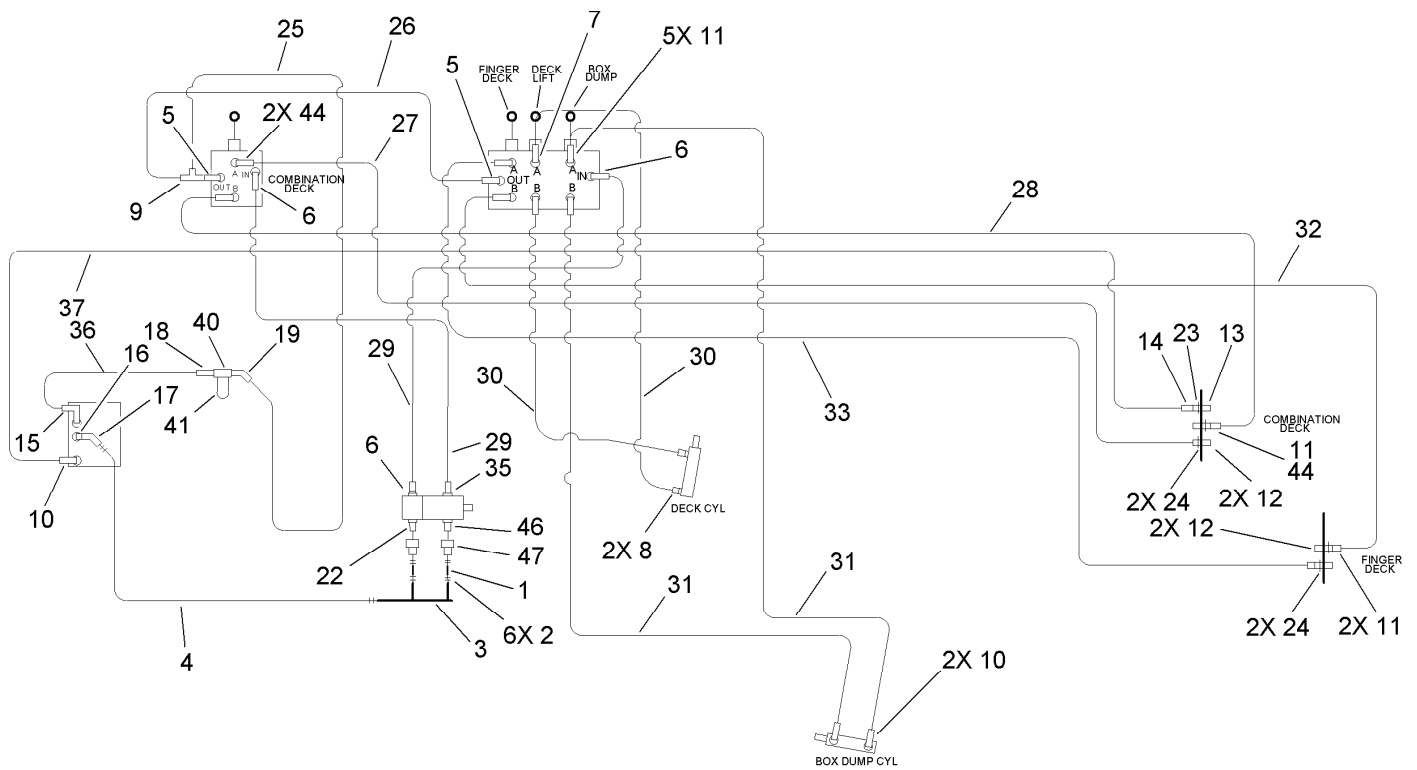
● Not serviced separately



Hydraulic Schematic Assembly

Ref.	Part Number	Qty.	Description	Ref.	Part Number	Qty.	Description
1	106-0072	2	Hose-Suction	13	63-1220	1	Coupler-Disconnect, Quick
2	2412-34	6	Clamp-Hose	14	340-82	1	Adapter
3	108-0855	1	Tube-Maniflod	14:1	237-42	1	O-Ring ●
4	106-0071	1	Hose-Suction	14:2	237-21	1	O-Ring ●
5	340-7	2	Adapter	15	340-108	1	Fitting-HYD
5:1	237-65	1	O-Ring ●	16	SVB14400	1	Strainer-Suction
5:2	237-80	1	O-Ring ●	17	SVB15100	1	Adapter-Cms
6	340-6	3	Fitting-HYD, Straight	18	340-8	1	Adapter
6:1	237-30	1	O-Ring ●	18:1	237-65	1	O-Ring ●
6:2	237-80	1	O-Ring ●	18:2	237-81	1	O-Ring ●
7	106-0073	1	Fitting-Orificed	19	340-156	1	Fitting-HYD
7:1	237-22	1	O-Ring ●	19:1	237-65	1	O-Ring ●
7:2	237-79	1	O-Ring ●	19:2	237-81	1	O-Ring ●
7:99	32151-83	1	Ring-Snap ●	22	340-9	2	Fitting-HYD, Straight
8	340-2	2	Fitting-HYD, Straight	22:1	237-58	1	O-Ring ●
8:1	237-22	1	O-Ring ●	22:2	237-81	1	O-Ring ●
8:2	237-42	1	O-Ring ●	23	32151-83	1	Ring-Snap
9	340-147	1	Fitting-HYD, Tee	24	32120-2	4	Ring-Retaining
9:1	237-65	2	O-Ring ●	25	105-0649	1	Hyd Hose ASM
10	340-124	3	Adapter	26	105-0648	1	Hyd Hose ASM
10:1	237-22	1	O-Ring ●	27	105-0650	1	Hyd Hose ASM
11	340-3	7	Adapter	27:3	237-79	1	O-Ring ●
11:1	237-22	1	O-Ring ●	28	105-0651	1	Hyd Hose ASM
11:2	237-79	1	O-Ring ●	29	105-0653	2	Hyd Hose ASM
12	105-4169	4	Coupler-Female	30	105-0642	2	Hyd Hose ASM

● Not illustrated



Hydraulic Schematic Assembly (continued)

Ref.	Part Number	Qty.	Description	Ref.	Part Number	Qty.	Description
31	105-0652	2	Hyd Hose ASM	40	92-5821	1	Head-Filter
32	105-0645	1	Hyd Hose ASM	41	54-0110	1	Filter-Oil, Transmission
33	105-0646	1	Hyd Hose ASM	42	SVA13800	10	Tiewire ●
35	340-131	1	Fitting-HYD, 90 DEG	44	340-4	3	Fitting-HYD, Straight
35:1	237-30	1	O-Ring ●	44:1	237-30	1	O-Ring ●
35:2	237-81	1	O-Ring ●	44:2	237-79	1	O-Ring ●
36	105-0638	1	Hyd Hose ASM	46	340-91	1	Adapter
37	105-0654	1	Hyd Hose ASM	47	108-0895	2	Adapter

● Not illustrated

Notes:

Notes:



Count on it.