



Count on it.

Parts Catalog

Versa Vac

Model No. 07053—Serial No. 220000001 and Up



Ordering Replacement Parts

To order replacement parts, please supply the part number, the quantity, and the description of each part desired.

Understanding Reference Numbers

Each identified part in an illustration has a reference number. The reference number for a part also appears in the parts list, along with other information about the part.

This catalog uses two special reference number formats, one to indicate parts in a service assembly and another to indicate the quantity of a given part in an illustration.

Service Assembly Reference Numbers

Parts in service assemblies have reference numbers in the form a:b. The a represents the reference number of the entire service assembly and the b represents a sequential number unique to each part within the service assembly.

For example, a wheel assembly might be identified by reference number 6, the tire by 6:1, the valve by 6:2, and the wheel by 6:3. When you order the assembly identified by reference number 6, you receive all parts identified by reference numbers 6:1, 6:2, and 6:3. However, you may also order any part individually. Reference numbers of this type appear in illustration and in parts lists.

Reference Numbers Indicating Quantity

In an illustration, if a reference number indicates more than one part, the reference number has the form nX y. The n represents the quantity of the part, the X is the multiplication symbol, and the y represents the reference number.

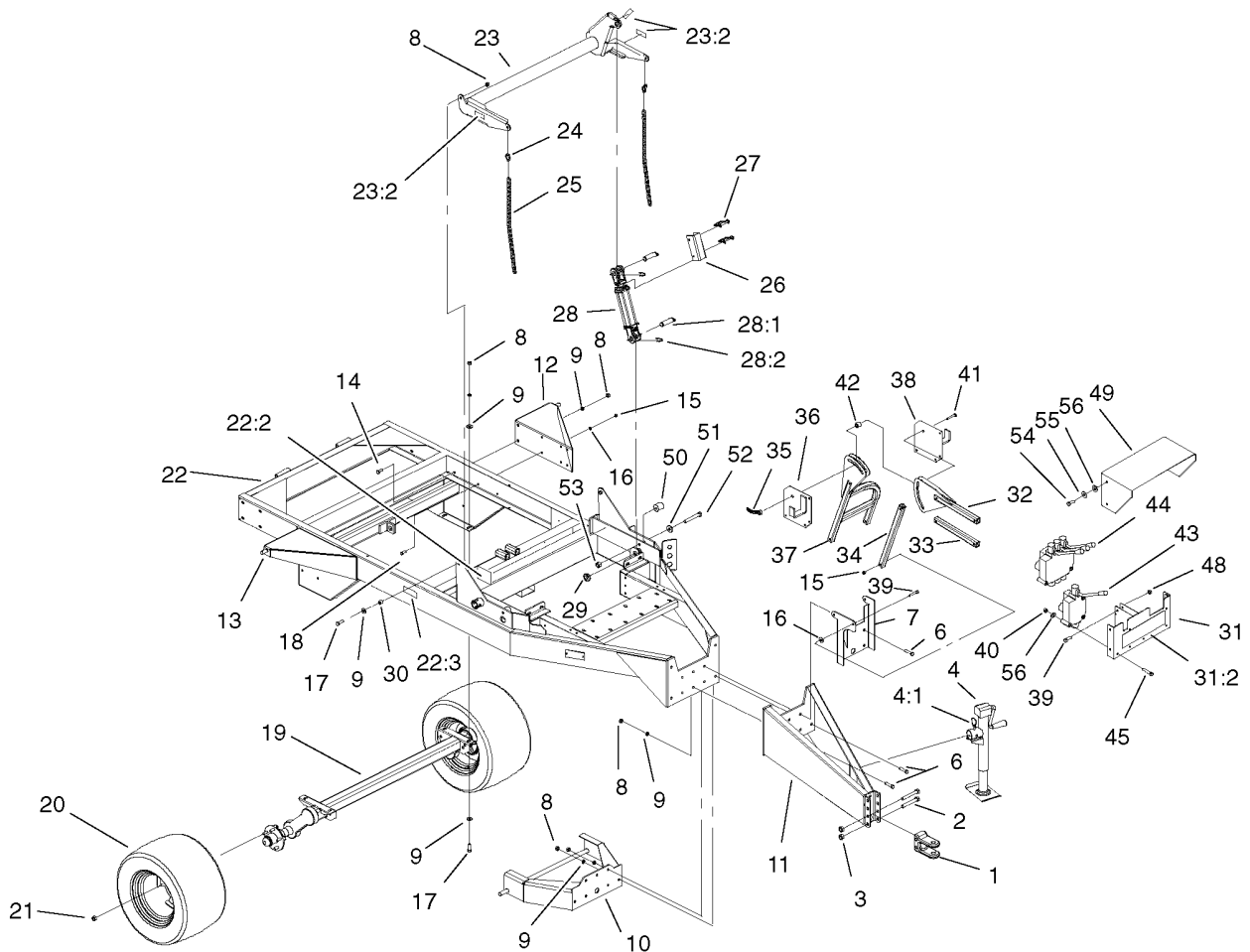
For example, in an illustration, the reference number 2X 37 means that two of the parts identified by reference number 37 are indicated.

List of Abbreviations

AR: as required	HLH: hex lag head	PTO: power-take-off
ASM: assembly	HOC: height-of-cut	RH: right hand
BBC: blade brake control	HSBH: hex socket button head	ROPS: roll-over protection system
BHTF: button head thread forming	HSFH: hex socket flat head	RRB: rear roller brush
CARR: carriage	HSH: hex socket head	SFH: slotted fillister head
CCW: counter clockwise	HWH: hex washer head	SHH: slotted hex head
CW: clockwise	HWHTF: hex washer head thread forming	SHWH: slotted hex washer head
DEG: degrees	HYD: hydraulic	SPH: slotted pan head
DPA: Dual Point Adjustment	LH: left hand	SQH: square head
ECM: electronic control module	LP: Liquefied Petroleum Gas	SRH: slotted round head
EXT: external	LPG: Liquefied Petroleum Gas	STD: standard
FH: flat head	NI: nylon insert	TAP: self tapping
GA: gauge	NPTF: national pipe thread fine	TTH: torx truss head
HD: heavy-duty	PFH: phillips flat head	
HF: hex flange	PPH: phillips pan head	
HH: hex head	PPHTF: phillips pan head thread forming	
HHF: hex head flange	PRH: phillips round head	
HHFTF: hex head flange thread forming	PTH: phillips truss head	
HJ: hex jam		

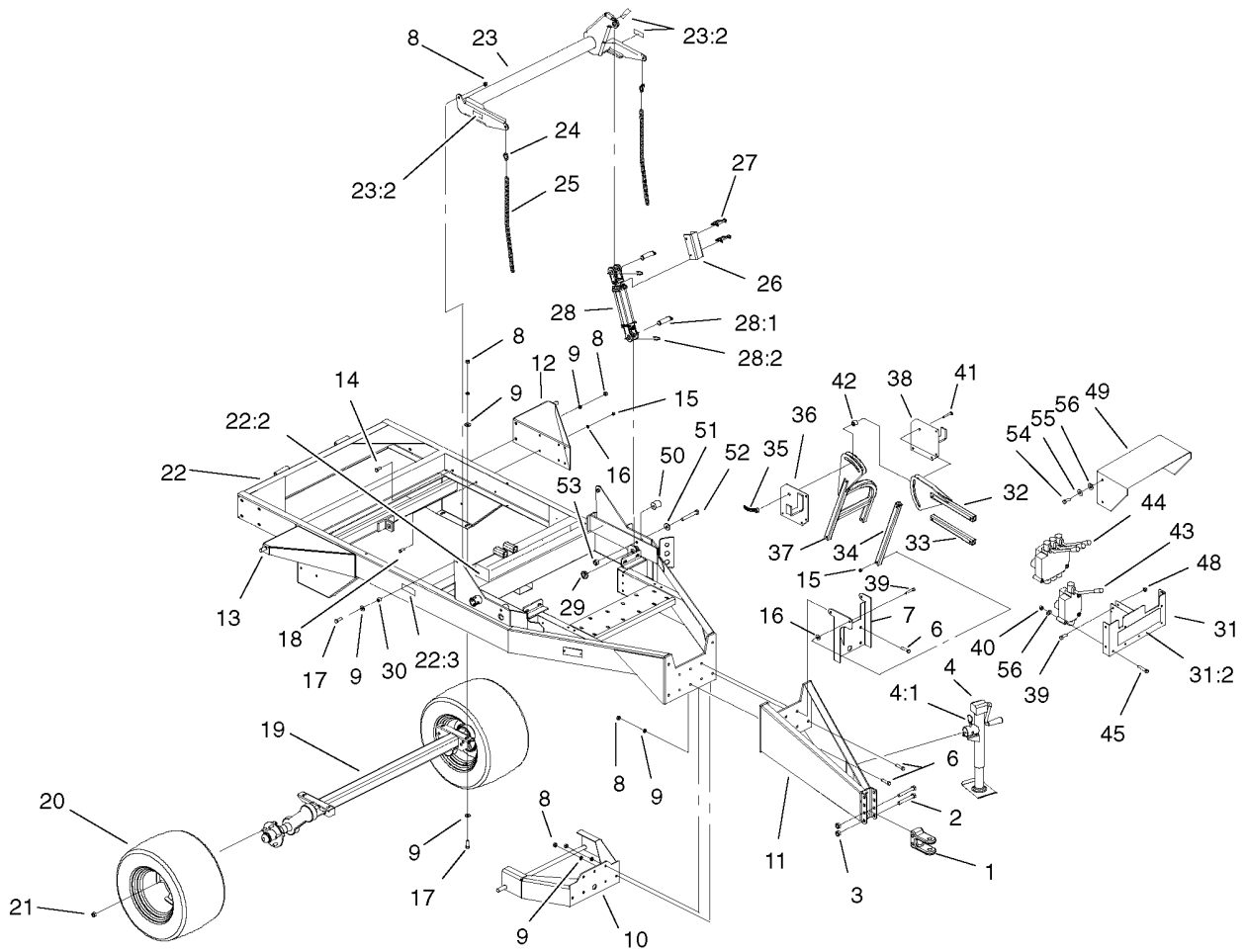
Contents

Frame and Axle Assembly	4
Impeller Assembly	6
Drive Assembly	7
Power-Take-Off Shaft and Shield Assembly	8
Double Power-Take-Off Shaft Assembly No. SVA10500	9
Sidewall Assembly	10
Right Hand Sidewall Assembly	11
Left Hand Sidewall Assembly	12
Door Assembly	13
Link-Lower Door Assembly	14
Cylinder Assembly	15
Hydraulic Schematic	16



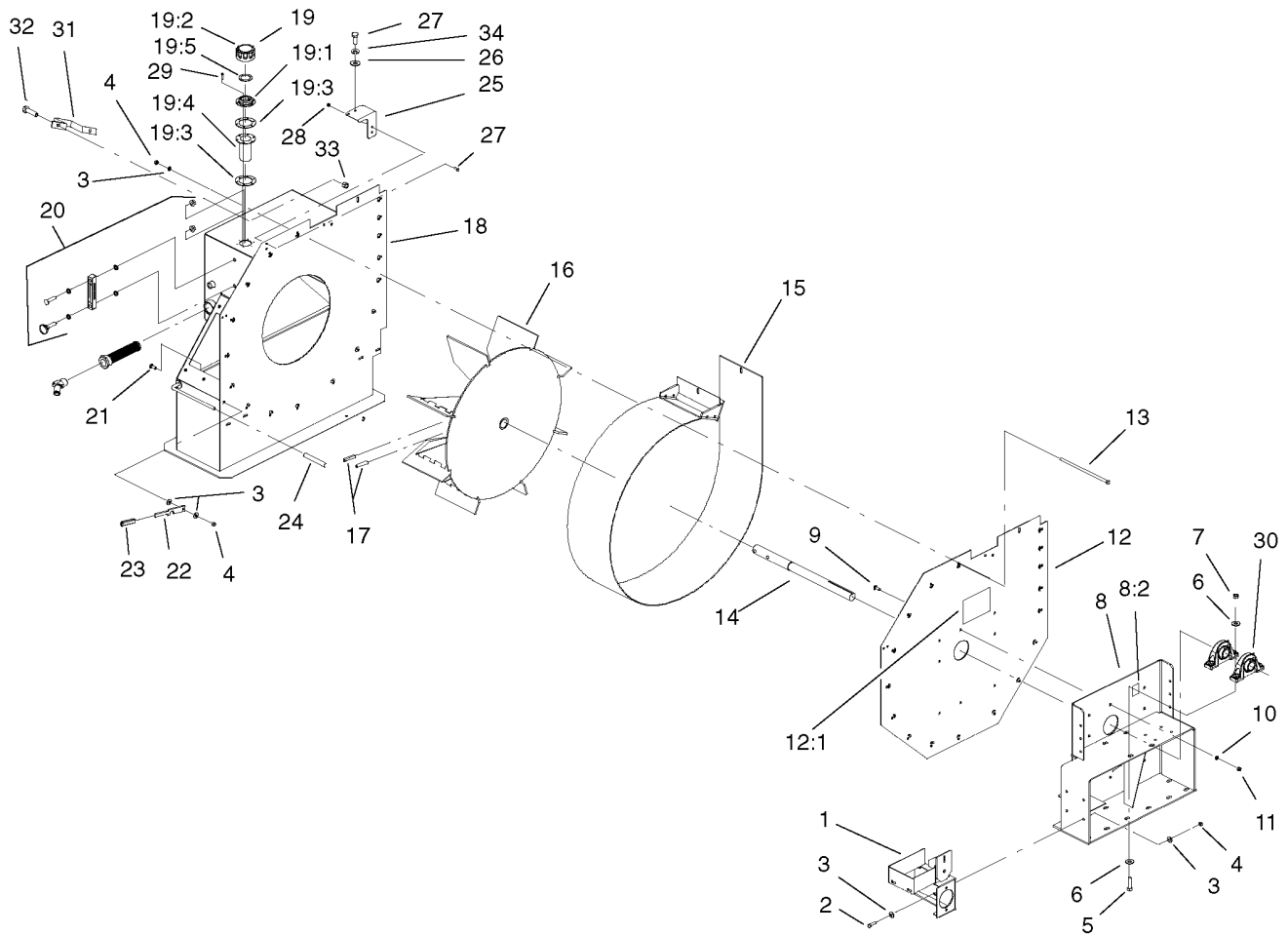
Frame and Axle Assembly

Ref.	Part Number	Qty.	Description	Ref.	Part Number	Qty.	Description
1	SV112-02-03	1	Hitch-Clevis	25	SV139-00	2	Chain-Link
2	327-23	2	Screw-HH	26	SV158-00-03	1	Channel-Lock
3	3296-53	2	Nut-Lock, NI	27	PF244-00	2	Pin-Wire, Lock
4	SVP15300	1	Jack	28	SVP14700	1	Cylinder-ASM
4:1	55-7190	1	Pin And Chain ASM	28:1	PSP10301	2	Pin
6	325-8	9	Screw-HH	28:2	PSP10302	4	Keeper
7	SVA17500-03	1	Base-Stand	29	PB502-00	1	Collar-Set
8	3296-23	19	Nut-Lock, NI	30	CS130-00	2	Spacer
9	3256-26	27	Washer-Flat	31	106-0186	1	Mount-Valve
10	SVA11200-03	1	Deck Mount ASM	31:2	106-0183	1	Decal-Panel, Control
11	SV198-00-03	1	Hitch	32	SVA17100-03	1	Stand-Valve
12	SVA11300-03	1	Bracket-Door, Left	33	SVA17200-03	1	Tube-Horizontal
13	SVA11400-03	1	Bracket-Door, Right	34	SVA17000-03	1	Tube-Vertical
14	325-4	4	Screw-HH	35	SVA18500-03	1	Handle-Locking
15	3296-39	16	Nut-Lock, NI	36	SVA17400-01	1	Hanger-Hose, Right
16	3256-24	13	Washer-Flat	37	SVA16900-03	1	Stand-Valve
17	325-7	6	Screw-HH	38	SVA17900-01	1	Hanger-Hose, Left
18	323-6	10	Screw-HH	39	323-11	10	Screw-HH
19	SVP20000	1	Axle-Torflex	40	3296-29	6	Nut-Lock, NI
20	SVP15000	2	Tire And Wheel ASM	41	3231-31	1	Screw-CARR
21	242-50	10	Nut-Lug	42	SVA17700	1	Spacer
22	106-0189	1	Frame	43	106-0168	1	Valve-Control, Single Spool
22:2	106-0167	1	Decal-Caution	44	106-0169	1	Valve-Control, Three Spool
22:3	106-0162	2	Decal-Caution, Stay Clear (Ce)	45	322-13	6	Screw-HH
23	106-0190	1	Arm-Lift	48	3217-7	2	Nut-Hex
23:2	93-6674	3	Decal-Warning	49	106-0171-03	1	Guard-Hose
24	CSP15000	2	Link-Quick	50	SV136-00-03	1	Roller-Chain
				51	3256-26	2	Washer-Flat



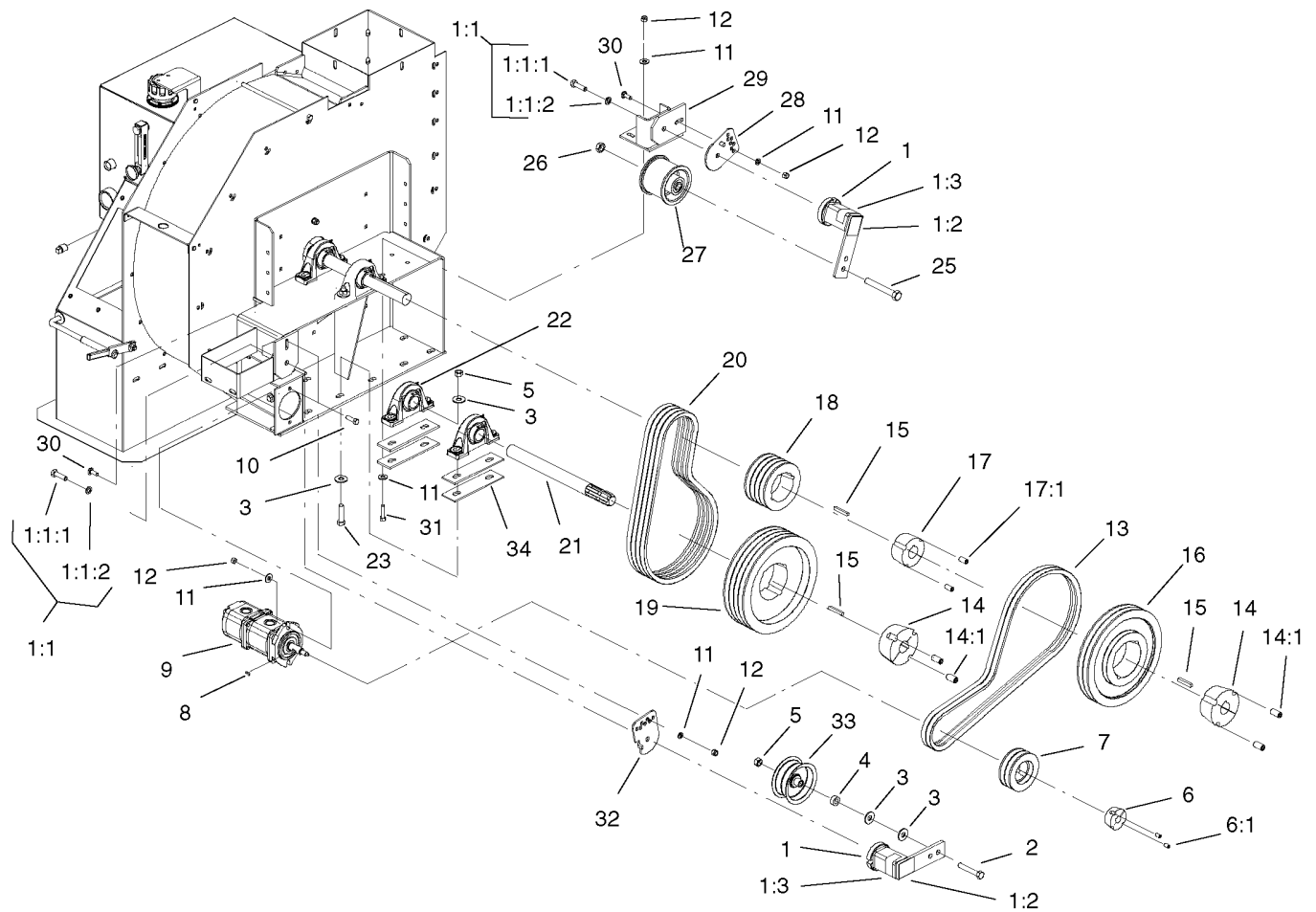
Frame and Axle Assembly (continued)

<i>Ref.</i>	<i>Part Number</i>	<i>Qty.</i>	<i>Description</i>	<i>Ref.</i>	<i>Part Number</i>	<i>Qty.</i>	<i>Description</i>
52	325-10	2	Screw-HH	55	3253-4	2	Washer-Lock
53	3217-9	2	Nut-HH	56	3256-23	8	Washer-Flat
54	322-2	2	Screw-HH				



Impeller Assembly

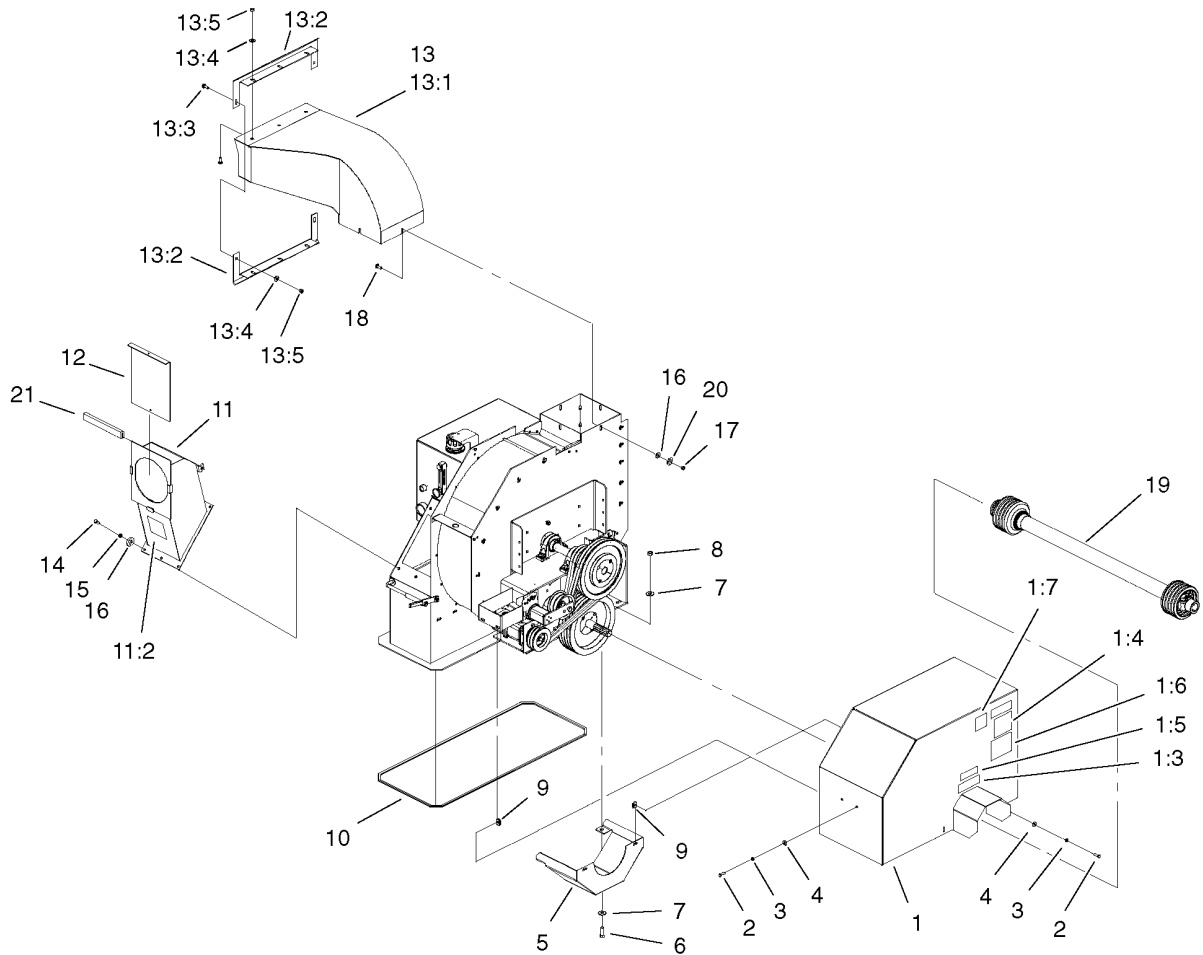
<i>Ref.</i>	<i>Part Number</i>	<i>Qty.</i>	<i>Description</i>	<i>Ref.</i>	<i>Part Number</i>	<i>Qty.</i>	<i>Description</i>
1	SVA16700-01	1	Mount-Pump	19:1	353-961	1	Flange
2	323-7	4	Screw-HH	19:2	353-962	1	Cap ASM
3	3256-4	24	Washer-Flat	19:3	353-963	2	Gasket
4	3296-39	19	Nut-Lock, NI	19:4	62-2610	1	Strainer-Cap, Filler
5	325-8	4	Screw-HH	19:5	76-1720	1	Gasket-Cap, Filler
6	3256-6	8	Washer-Flat	20	SVB14700	1	Thermometer ASM
7	3296-23	4	Nut-Lock, NI	21	3231-25	1	Bolt-CARR
8	106-0191	1	Mount-Drive	22	SV147-00-01	1	Latch
8:2	105-4586	1	Decal-Shield	23	SVP14600	1	Cover-Latch, Handle
9	3230-2	8	Bolt-CARR	24	PF225-00	1	Cover-Handle
10	3256-23	8	Washer-Flat	25	SVB15900-01	1	Mount-Filter
11	3296-29	8	Nut-Lock, NI	26	3256-22	4	Washer-Flat
12	106-0206	1	Panel-Back	27	321-4	6	Screw-HH
12:1	66-6140	1	Decal	28	3296-42	6	Nut-Lock, NI
13	106-0184	14	Screw-HH	29	32144-89	6	Screw-Thread Forming
14	SV327-00	1	Shaft-Impeller	30	BLP10200	2	Bearing-Pillow Block
15	SV102-00-01	1	Band ASM	31	CGC10900-01	1	Clamp-Capacitor
16	SV201-00-01	1	Impeller ASM	32	321-2	2	Screw-HH
17	LDB14600	2	Pin-Spiral	33	3217-5	2	Nut-Hex
18	SV305-00-01	1	Funnel ASM	34	3253-3	2	Washer-Lock
19	95-7004	1	Filler Cap ASM				



Drive Assembly

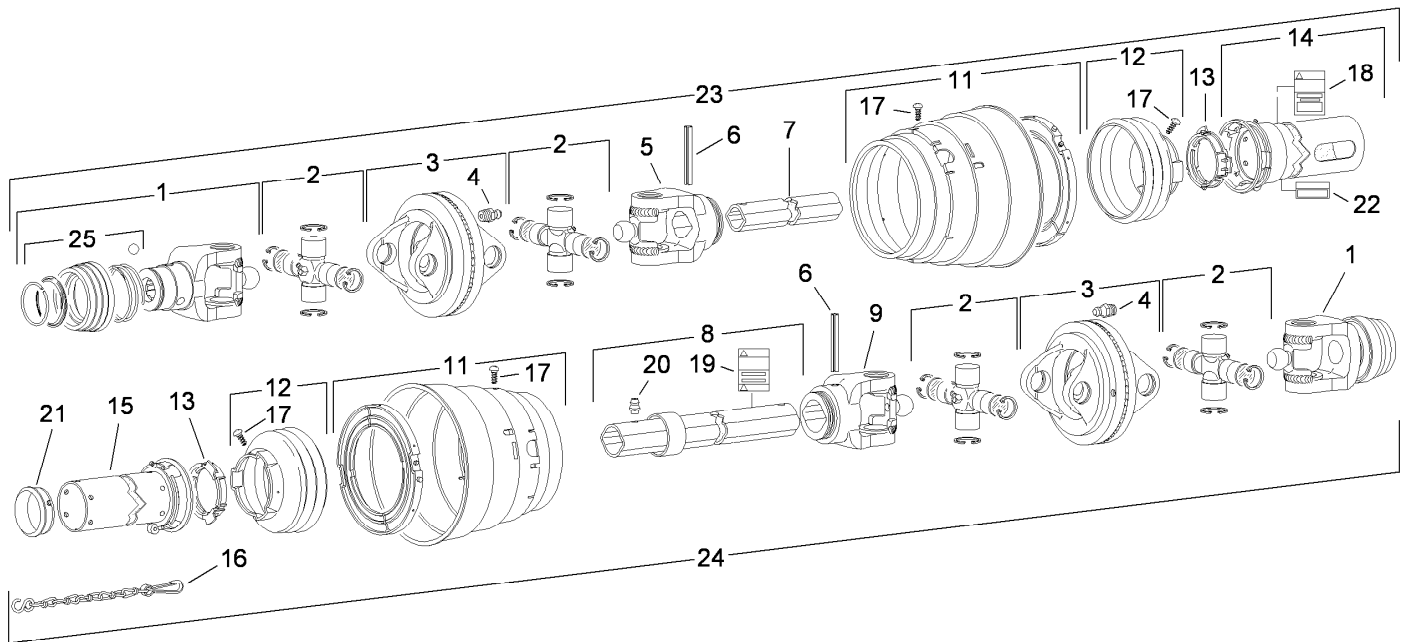
Ref.	Part Number	Qty.	Description	Ref.	Part Number	Qty.	Description
1	105-0667	2	Idler Tensioner ASM	15	61-004-0451	2	Key-Square
1:1		1	Tensioner-Idler ●	16	SVB13200	1	Pulley-Taper Lock
1:1:1	33116-040	1	Screw-HH	17	FBJ10700	1	Bushing-Taper Lock
1:1:2	3253-7	1	Washer-Lock	17:1	3248-6	2	1/2X1 Cup Pt Setscrew
1:2	105-0668	1	Decal-Align	18	LDB14700	1	Sheave-Taper, Lock
1:3	105-0669	1	Decal-Angle	19	LDB12400	1	Pulley-Taper, Lock
2	325-12	1	Screw-HH	20	SBC17000	4	V-Belt
3	3256-6	10	Washer-Flat	21	SVB13000	1	Shaft-Input
4	GF213-00	1	Spacer	22	BLP10200	2	Bearing-Pillow Block
5	3296-23	5	Nut-Lock, NI	23	325-10	4	Screw-HH
6	SVA19300	1	Bushing-Taper Lock	25	3214-15	1	Screw-HH
6:1	3247-4	2	Screw-Set	26	3220-6	1	Nut-Jam
7	SBC18000	1	Sheave-Taper, Lock	27	105-4821	1	Idler-Pulley
8	3257-32	1	Key-Woodruff	28	105-4839	1	Stabilizer-Tensioner
9	SVA18100	1	Pump-Hyd, Double Gear	29	SV286-00-01	1	Bracket-Lovejoy
10	323-7	2	Screw-HH	30	3231-25	2	Bolt-CARR
11	3256-4	12	Washer-Flat	31	323-8	4	Screw-HH
12	3296-39	8	Nut-Lock, NI	32	105-4835	1	Stabilizer-Tensioner
13	SVB13600	2	V-Belt	33	FBJ11100	1	Pulley-Idler
14	BLP11200	2	Bushing-Taper Lock	34	SVB19500-01	4	Shim
14:1	105-0683	2	Screw-Set				

● Not serviced separately



Power-Take-Off Shaft and Shield Assembly

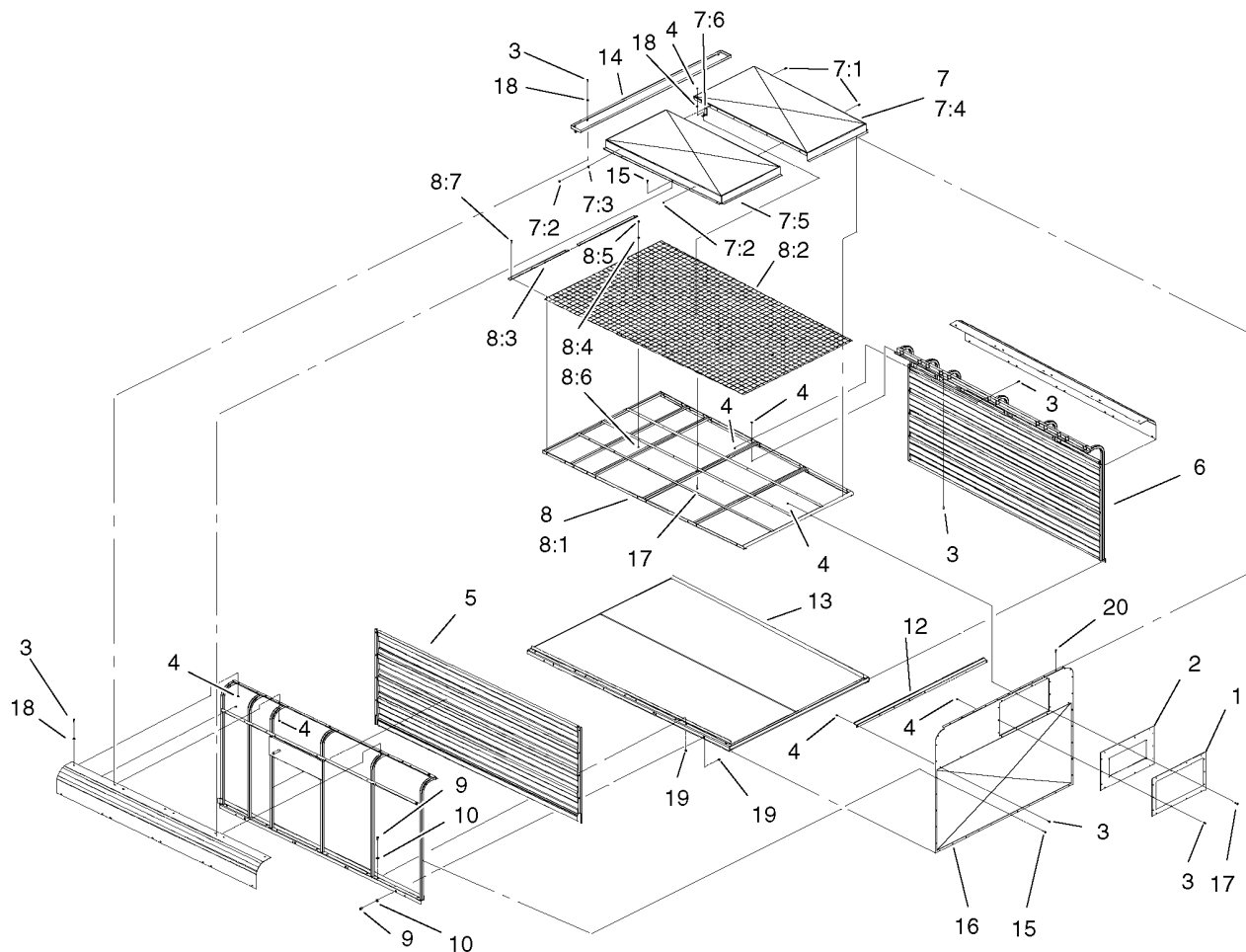
<i>Ref.</i>	<i>Part Number</i>	<i>Qty.</i>	<i>Description</i>	<i>Ref.</i>	<i>Part Number</i>	<i>Qty.</i>	<i>Description</i>
1	106-0193	1	Shield-Drive	11:2	106-0166	1	Decal-Danger, Blower
1:3	105-0628	1	Decal-Caution, U-Joint	12	SV143-00-01	1	Door-Hose
1:4	105-4587	1	Decal-Caution, Ce	13	SVA14900	1	Spout ASM
1:5	105-0627	1	Decal-Caution	13:1	SV216-00-01	1	Transition-Spout
1:6	106-0163	1	Decal-Danger, Blowers	13:2	SVA10200-01	2	Seal-Dust
1:7	105-4586	1	Decal-Shield	13:3	3231-2	8	Bolt-CARR
2	322-5	6	Screw-HH	13:4	3256-24	8	Washer-Flat
3	3253-4	6	Washer-Lock	13:5	3296-39	8	Nut-Lock, NI
4	3256-23	6	Washer-Flat	14	323-6	6	Screw-HH
5	105-4842-01	1	Guard-Pulley	15	3253-21	6	Washer-Lock
6	325-8	2	Screw-HH	16	3256-4	10	Washer-Flat
7	3256-26	4	Washer-Flat	17	3217-7	4	Nut-Hex
8	3296-23	2	Nut-Lock, NI	18	3231-2	4	Bolt-CARR
9	CSP11700	6	Nut-Thin, Tinnerman	19	SVA10500	1	Shaft-PTO, Double
10	105-4843	1	Trim	20	3253-21	4	Washer-Lock
11	106-0192	1	Chute-Vac	21	106-0207	1	Trim-Chute Vac



Double Power-Take-Off Shaft Assembly No. SVA10500

Ref.	Part Number	Qty.	Description
1	120-6119	1	Yoke ASM
2	SVA10501	4	Cross And Bearing Kit
3	120-6120	2	Double Yoke
4	84-6290	2	Zerk-Grease
5	SVA10508	1	Yoke-Inboard, Tractor End
6	105-2927	2	Pin-Spring
7	120-6121	1	Tube-Inner
8	SVA10511	1	Tube-Outer
9	SVA10509	1	Yoke-Inboard, Implement End
11	120-6122	1	Guard And Bearing ASM
12	120-6123	1	Guard Cone,3 Rib
13	105-2936	2	Bearing-Ring
14	SVA10502	1	Shield-Outer
15	SVA10503	1	Shield-Inner
16	77-4760	1	Chain-Safety
17	84-6360	14	Screw
18	92-7936	1	Decal-Warning
19	92-7937	1	Decal-Warning
20	84-6370	1	Zerk-Grease
21		1	Support-Bearing ●
22		1	Decal-Lubrication ●
23	SVA1050T	1	Shaft-Double Cv, PTO (Tractor Half)
24	SVA1050I	1	Shaft-Double Cv, PTO (Implement Half)
25	120-6124	1	Collar Kit ASM

● Not serviced separately

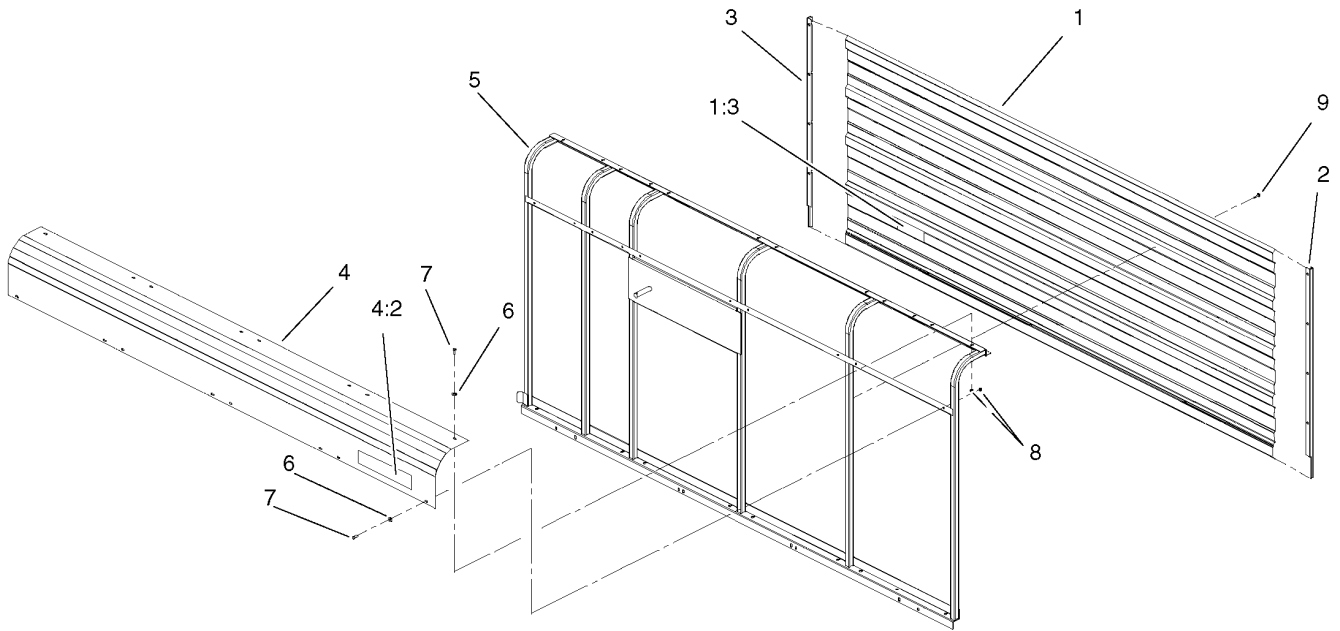


Sidewall Assembly

Ref.	Part Number	Qty.	Description
1	SVA10600-01	1	Plate
2	SVA10400	1	Gasket-Dust
3	321-4	49	Screw-HH
4	3296-42	54	Nut-Lock, NI
5		1	RH Sidewall ASM ●
6		1	LH Sidewall ASM ●
7		1	Dust Cap ASM ●
7:1	321-4	8	Screw-HH
7:2	3296-42	8	Nut-Lock, NI
7:3	3256-2	1	Washer-Flat
7:4	VT309-0L-01	1	Dust-Cover, Left
7:5	VT309-0R-01	1	Dust-Cover, Right
7:6	VT340-00-01	1	Support-Dust Cover
8		1	Roof-Trailer ●
8:1	VT306-00-01	1	Roof Frame ASM
8:2	VT307-00	2	Screen-Roof

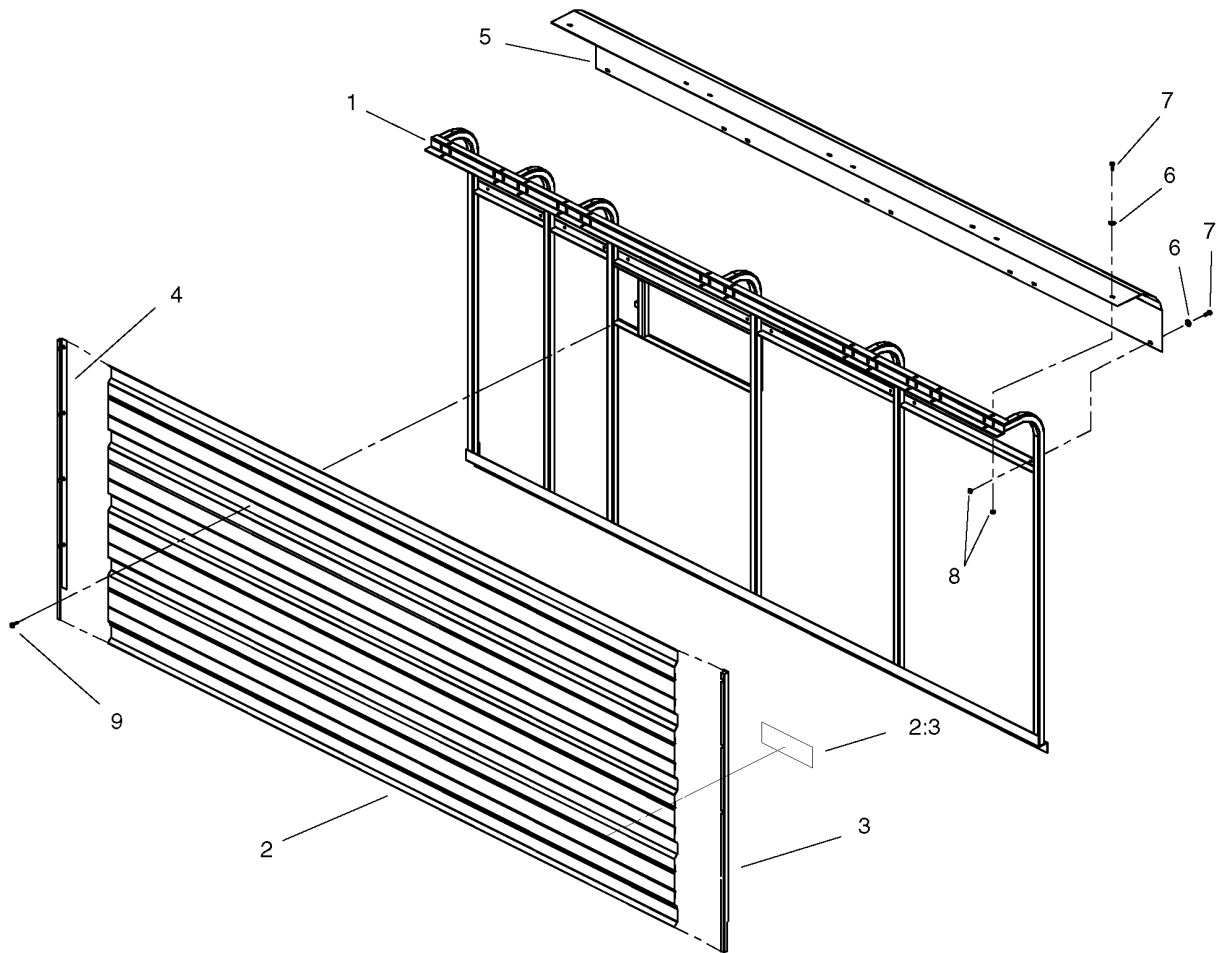
Ref.	Part Number	Qty.	Description
8:3	VT308-00-01	2	Trim-Edge
8:4	3256-22	15	Washer-Flat
8:5	321-4	15	Screw-HH
8:6	3296-42	15	Nut-Lock, NI
8:7	105-0618	8	Screw
9	323-6	24	Screw-HH
10	3256-24	24	Washer-Flat
12	SVA12000-01	1	Brace-Front
13	VT301-00	1	Vt301-00-03
14	SVA11900-01	1	Hinge Mount ASM
15	105-0618	40	Screw
16	VT310-00-01	1	Sheet-Trailer, Front
17	321-10	5	Screw-HH
18	3256-22	37	Washer-Flat
19	3290-357	24	Nut-HHF, Whiz
20	105-4848	12	Screw

● Not serviced separately



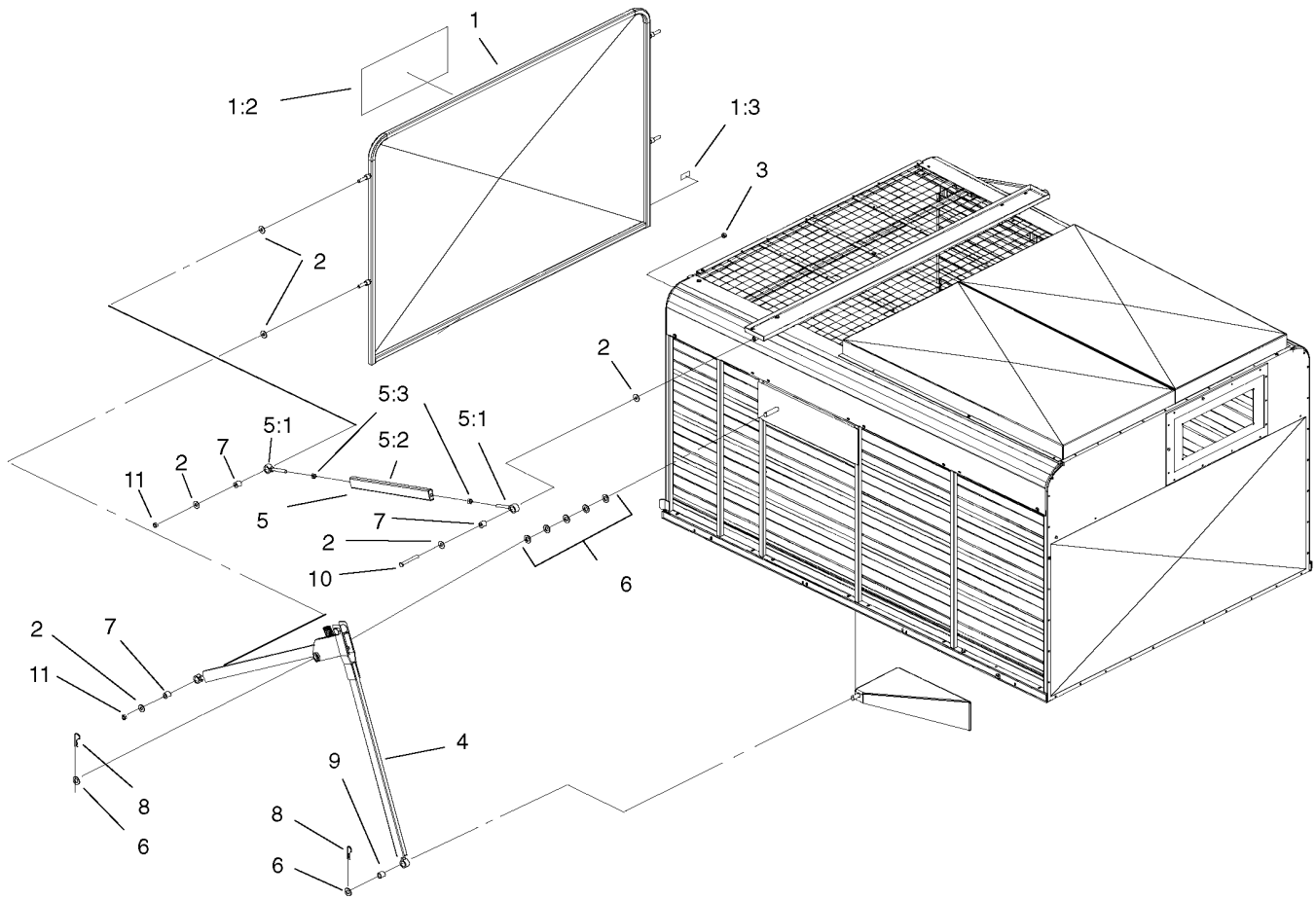
Right Hand Sidewall Assembly

<i>Ref.</i>	<i>Part Number</i>	<i>Qty.</i>	<i>Description</i>
1	106-0174	1	Sheet-Sidewall, RH
1:3	106-0162	1	Decal-Caution, Stay Clear (Ce)
2	VT130-0R-01	1	Trim-Enclosure, Right
3	VT130-0L-01	1	Trim-Enclosure, Left
4	106-0173	1	Corner-Roof, RH
4:2	105-0738	1	Decal-RH
5	VT203-0R-01	1	Right Wall ASM
6	3256-22	8	Washer-Flat
7	321-4	8	Screw-HH
8	3296-42	8	Nut-Lock, NI
9	105-0618	24	Screw



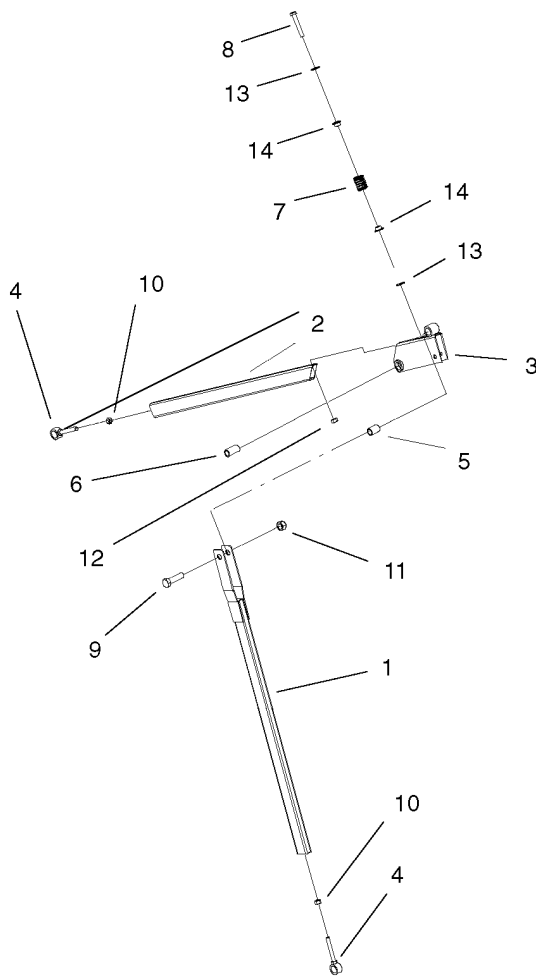
Left Hand Sidewall Assembly

<i>Ref.</i>	<i>Part Number</i>	<i>Qty.</i>	<i>Description</i>
1	VT203-0L-01	1	Left Wall ASM
2	106-0176	1	Sheet-Sidewall, LH
2:3	106-0162	1	Decal-Caution, Stay Clear (Ce)
3	VT130-0L-01	1	Trim-Enclosure, Left
4	106-0175	1	Corner-Roof, LH
5	VT130-0R-01	1	Trim-Enclosure, Right
6	3256-22	8	Washer-Flat
7	321-4	8	Screw-HH
8	3296-42	8	Nut-Lock, NI
9	105-0618	24	Screw



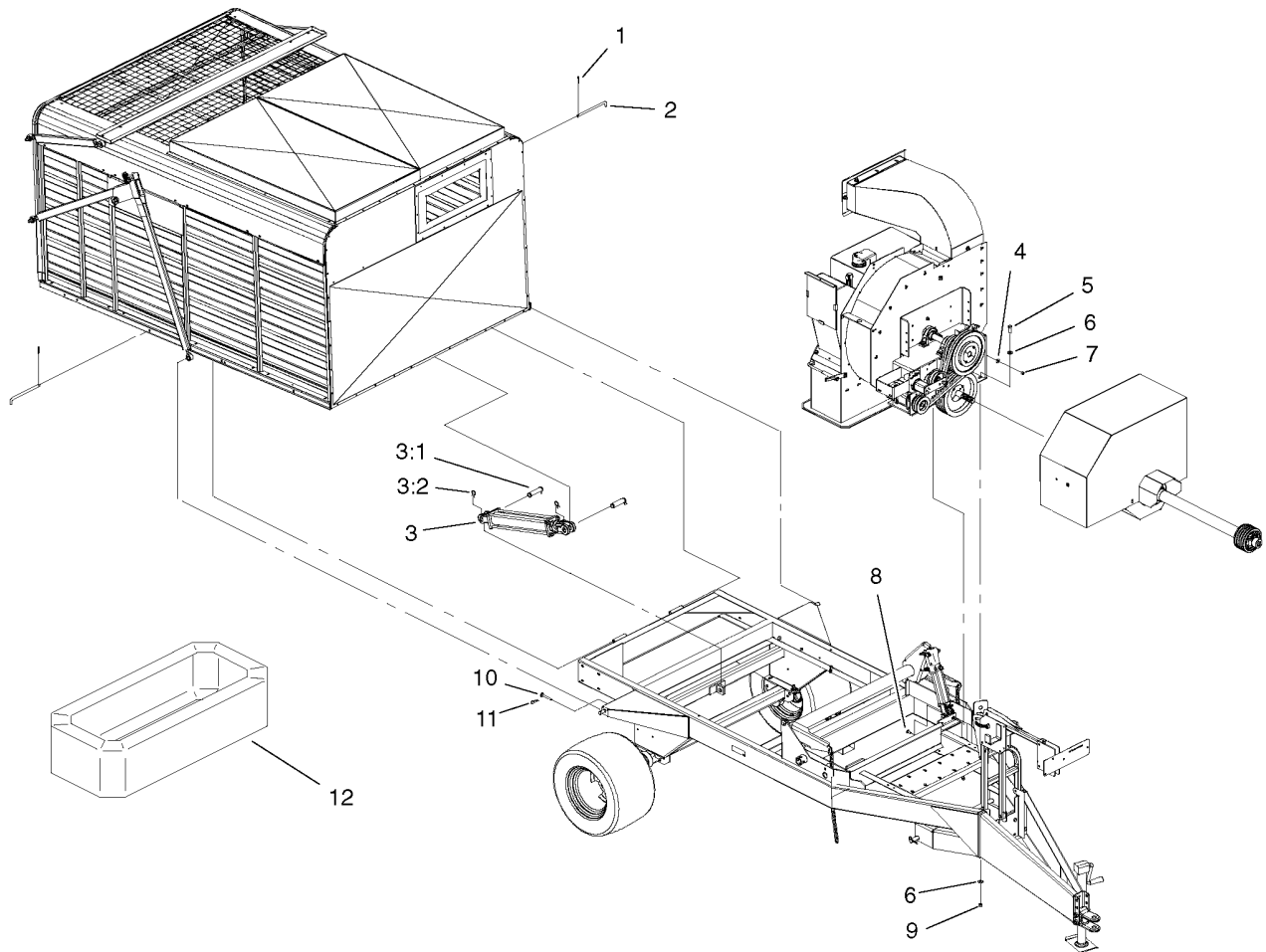
Door Assembly

Ref.	Part Number	Qty.	Description
1	106-0194	1	Door-Trailer
1:2	67-7920	1	Decal
1:3	106-0162	1	Decal-Caution, Stay Clear (Ce)
2	3256-26	12	Washer-Flat
3	3296-23	2	Nut-Lock, NI
4	SVA15100	2	Lower Link Door ASM
5	SVA15000	2	Upper Link Door ASM
5:1	SVA11700-01	1	Link ASM
5:2	SVA12200	2	Pivot-Hinge
5:3	3217-9	2	Nut-HH
6	3256-28	14	Washer-Flat
7	SVA12700	6	Bushing
8	9335064	4	Pin-Cotter, Hair
9	SVA12800	2	Bushing
10	325-17	2	Screw-HH
11	32153-5	4	Nut-Hex



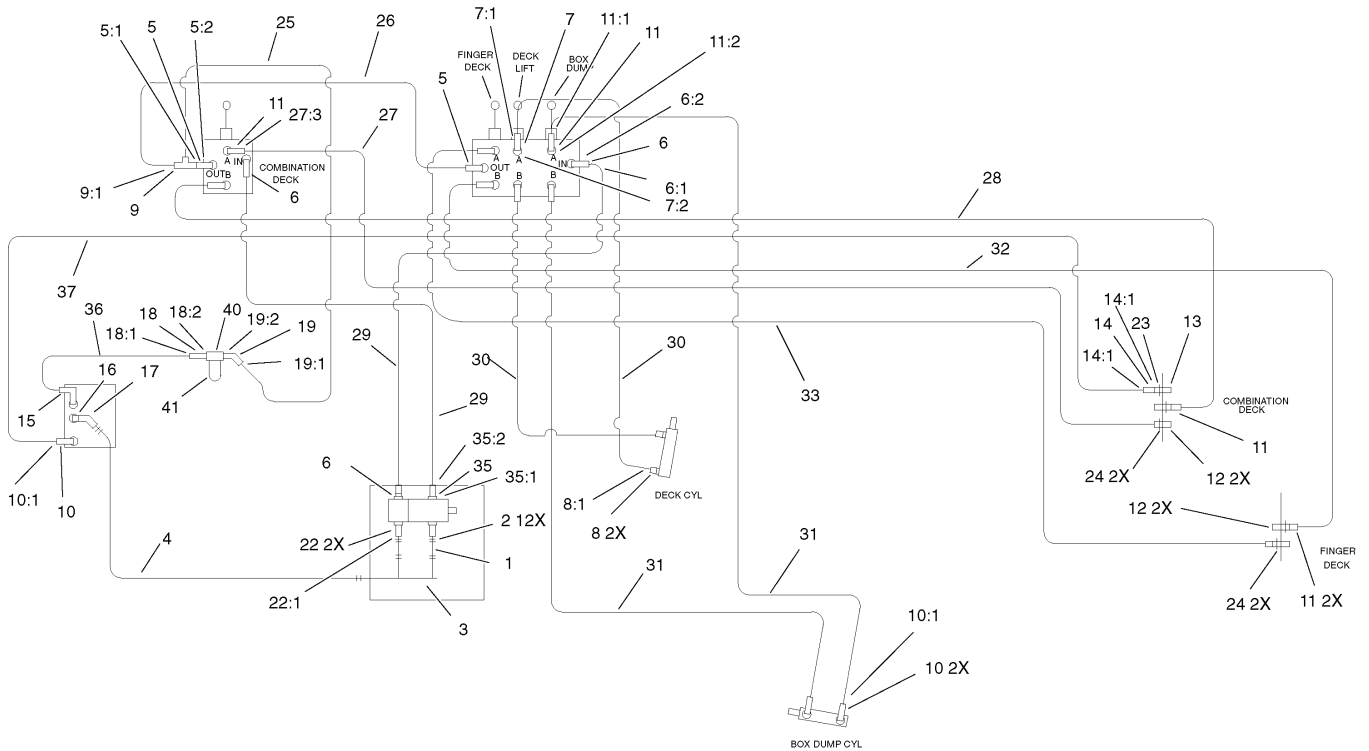
Link-Lower Door Assembly

<i>Ref.</i>	<i>Part Number</i>	<i>Qty.</i>	<i>Description</i>
1	SVA11800-01	1	Pull Arm ASM
2	SVA11600-01	1	Lower Linkage ASM
3	SVA12100-01	1	Mount-Bracket
4	SVA12200	2	Pivot-Hinge
5	SVA12900	1	Bushing
6	SVA13000	1	Bushing
7	GF206-00	1	Spring-Compression
8	325-13	1	Screw-HH
9	328-3	1	Screw-HH
10	3217-9	2	Nut-HH
11	3296-51	1	Nut-Lock, NI
12	3296-23	1	Nut-Lock, NI
13	3256-26	2	Washer-Flat
14	SVA13300	2	Bushing-Flange



Cylinder Assembly

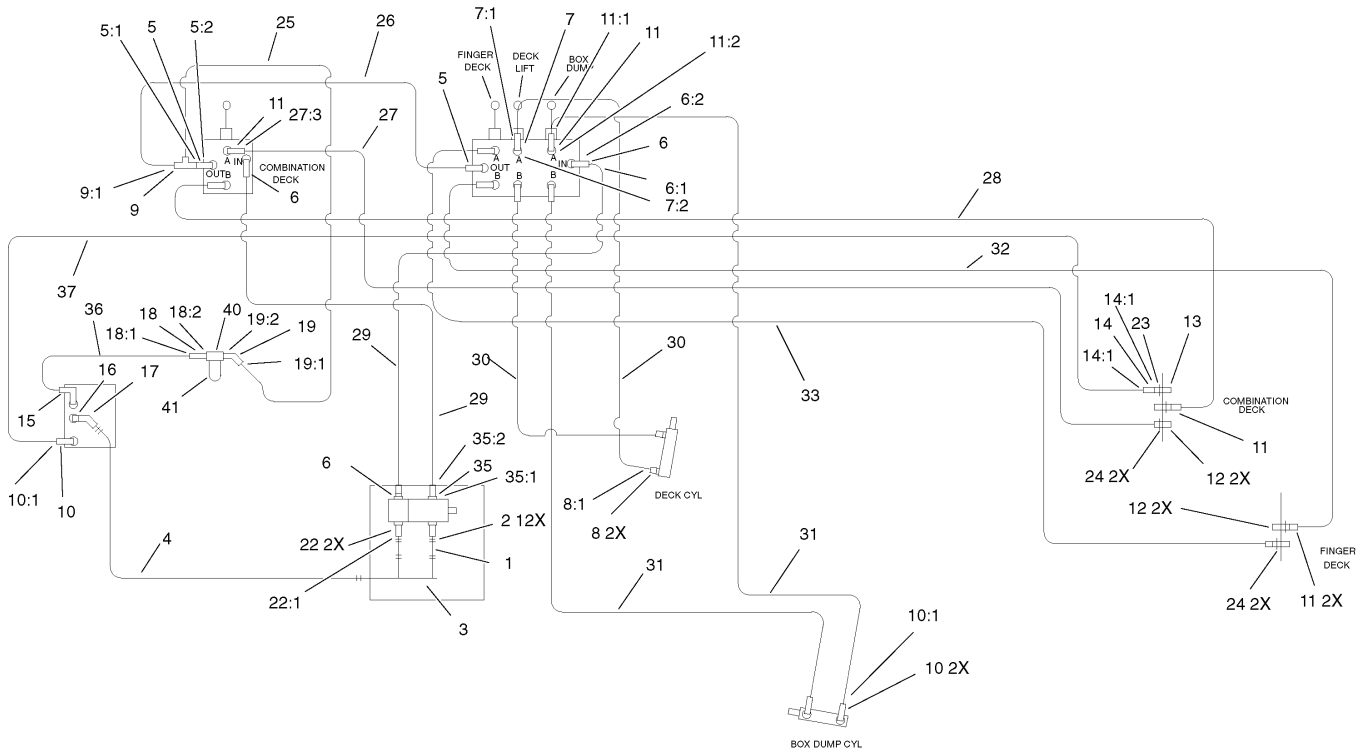
<i>Ref.</i>	<i>Part Number</i>	<i>Qty.</i>	<i>Description</i>
1	3272-22	2	Pin-Cotter
2	PB114-00	2	Pin-Hinge
3	PSP10300	1	Hydraulic Cylinder ASM
3:1	PSP10301	2	Pin
3:2	PSP10302	4	Keeper
4	3256-4	4	Washer-Flat
5	325-6	5	Screw-HH
6	3256-6	10	Washer-Flat
7	3296-39	4	Nut-Lock, NI
8	3231-2	4	Bolt-CARR
9	3296-23	5	Nut-Lock, NI
10	SVA12600	1	Door Pin ASM
11	3290-355	2	Pin-Hair
12	SVP15100	1	Ring-Canvas



Hydraulic Schematic

Ref.	Part Number	Qty.	Description	Ref.	Part Number	Qty.	Description
1	106-0072	2	Hose-Suction	14	340-82	1	Adapter
2	2412-34	12	Clamp-Hose	14:1	237-42	1	O-Ring
3	106-0070	1	Tube-Manifold	14:2	237-21	1	O-Ring
4	106-0071	1	Hose-Suction	15	340-108	1	Fitting-HYD
5	340-7	2	Adapter	16	SVB14400	1	Strainer-Suction
5:1	237-65	1	O-Ring	17	SVB15100	1	Adapter-Cms
5:2	237-80	1	O-Ring	18	340-8	1	Adapter
6	340-6	3	Fitting-HYD, Straight	18:1	237-65	1	O-Ring
6:1	237-30	1	O-Ring	18:2	237-81	1	O-Ring
6:2	237-80	1	O-Ring	19	340-156	1	Fitting-HYD
7	106-0073	1	Fitting-Orificed	19:1	237-65	1	O-Ring
7:1	237-22	1	O-Ring	19:2	237-81	1	O-Ring
7:2	237-79	1	O-Ring	22	353-987	2	Fitting-HYD, 90 DEG (Barbed)
7:99	32151-83	1	Ring-Snap	22:1	237-81	1	O-Ring
8	340-12	2	Fitting-Straight	23	32151-83	1	Ring-Snap
8:1	237-30	1	O-Ring	24	32120-2	4	Ring-Retaining
9	340-147	1	Fitting-HYD, Tee	25	105-0649	1	Hyd Hose ASM
9:1	237-65	3	O-Ring	26	105-0648	1	Hyd Hose ASM
10	340-124	3	Adapter	27	105-0650	1	Hyd Hose ASM
10:1	237-22	1	O-Ring	27:3	237-79	1	O-Ring
11	340-3	10	Adapter	28	105-0651	1	Hyd Hose ASM
11:1	237-22	1	O-Ring	29	105-0653	2	Hyd Hose ASM
11:2	237-79	1	O-Ring	30	105-0642	2	Hyd Hose ASM
12	105-4169	4	Coupler-Female	31	105-0652	2	Hyd Hose ASM
13	63-1220	1	Coupler-Disconnect, Quick				

● Not illustrated



Hydraulic Schematic (continued)

Ref.	Part Number	Qty.	Description	Ref.	Part Number	Qty.	Description
32	105-0645	1	Hyd Hose ASM	36	105-0638	1	Hyd Hose ASM
33	105-0646	1	Hyd Hose ASM	37	105-0654	1	Hyd Hose ASM
35	340-105	1	Fitting-HYD, 90 DEG	40	92-5821	1	Head-Filter
35:1	237-80	1	O-Ring	41	54-0110	1	Filter-Oil, Transmission
35:2	237-30	1	O-Ring	42	SVA13800	25	Tiewire ●

● Not illustrated

Notes:

Notes:



Count on it.