

# Mulch Kit

## Commercial 30

Model No. 116-8841

### Installation Instructions

For Serial Nos. 313,000,000 & Higher

## Loose Parts

Use the chart below to verify that all parts have been shipped.

Item	Part No.	Description	Qty
1	116-7301-01	Asm-Mulch Baffle	1
2	3230-23	Bolt-Carriage 5/16-18 x 3/4 short neck	3

Item	Part No.	Description	Qty
3	104-8300	Nut-Nyloc 5/16-18 Flg	4
4	46-8560	Screw-HHF 1/4-20 X 1/2	1

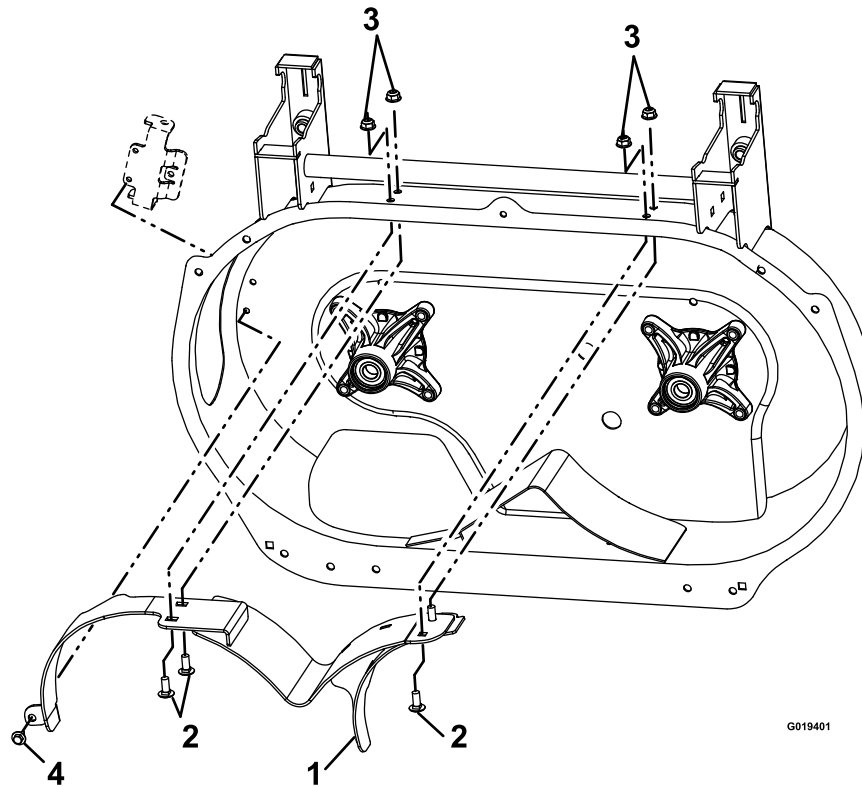


Figure 1



## Safety Alert Symbol

This Safety Alert Symbol (Figure 2) is used both in this manual and on the machine to identify important safety messages which must be followed to avoid accidents

This symbol means: **ATTENTION! BECOME ALERT! YOUR SAFETY IS INVOLVED!**



**Figure 2**  
Safety Alert Symbol

---

The safety alert symbol appears above information which alerts you to unsafe actions or situations and will be followed by the word **DANGER**, **WARNING**, or **CAUTION**.

**DANGER:** White lettering / Red background. Indicates an imminently hazardous situation which, if not avoided, **Will** result in death or serious injury.

**WARNING:** Black lettering / Orange background. Indicates a potentially hazardous situation which, if not avoided, **Could** result in death or serious injury.

**CAUTION:** Black lettering / Yellow background. Indicates a potentially hazardous situation which, if not avoided, **May** result in minor or moderate injury.

This manual uses two other words to highlight information. **Important** calls attention to special mechanical information and **Note** emphasizes general information worthy of special attention.

### **WARNING**

If you leave the wire on the spark plug, someone could accidentally start the engine. Accidental starting of the engine could seriously injure you or other bystanders.

**Disconnect the wire from the spark plug before you do any maintenance. Set the wire aside so that it does not accidentally contact the spark plug.**

**Note:** Determine the left and right sides of the machine from the normal operating position.

## Installing the Mulch Kit

1. Park the machine on a level surface.
2. Remove the bagger from the unit.
3. Make sure all moving parts have stopped and the spark plug wire has been disconnected. Allow unit to cool before starting these instructions.
4. Tip the unit rearward onto its handle.
5. Clean out any grass build-up from underside of deck.
6. Remove and retain the flow control baffle and its hardware.
7. Remove and retain the rear 1/4-20 x 3/8 inch screw from the hinge bracket.
8. Using the welded bolt in the mulch baffle assembly, insert it into the upper LH front hole under the deck as shown in Figure 1. Loosely install one 5/16 inch nyloc nut onto the welded bolt.
9. Install the remaining three 5/16-18 x 3/4 inch carriage bolts and 5/16 inch nyloc nuts.
10. Insert the 1/4-20 x 1/2 inch hex flanged screw into the rear hole of the hinge bracket (see Figure 1).
11. Tighten all hardware.
12. Carefully place the unit in the normal operating position.

**Note:** Make sure the side discharge door is installed and securely in place.

13. Reconnect the spark plug wire.

**Note:** An optional low lift blade (P/N 120-9500) may work better in certain mulching conditions. Refer to the mower operator's manual for blade maintenance.

## Converting Back to Side Discharge

1. Safely remove and retain the mulch baffle assembly and its hardware.
2. Reinstall standard blades if low lift blades were used.
3. Reinstall the flow control baffle.
4. Reinstall the rear 1/4-20 x 3/8 inch screw into the hinge bracket.
5. Remove and retain the side discharge door and install the side discharge deflector.