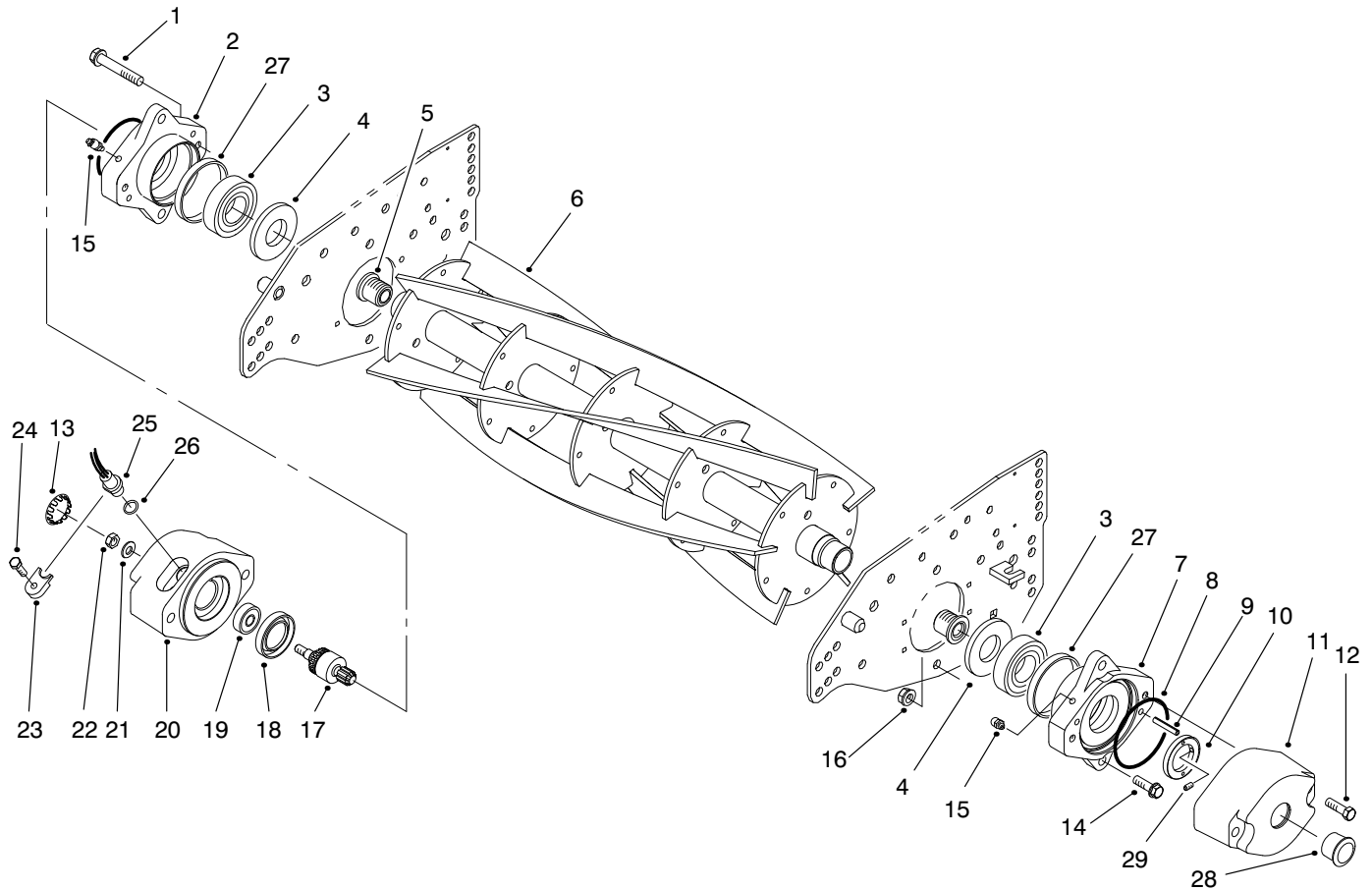




<b>MODEL NO. 03853-70300 &amp; UP</b> <b>MODEL NO. 03854-70133 &amp; UP</b> <b>MODEL NO. 03856-70272 &amp; UP</b>	<b>PARTS</b> <b>CATALOG</b>
<b>5/7/11 BLADE REELS</b> <b>REELMASTER® 6500D/6700D</b>	



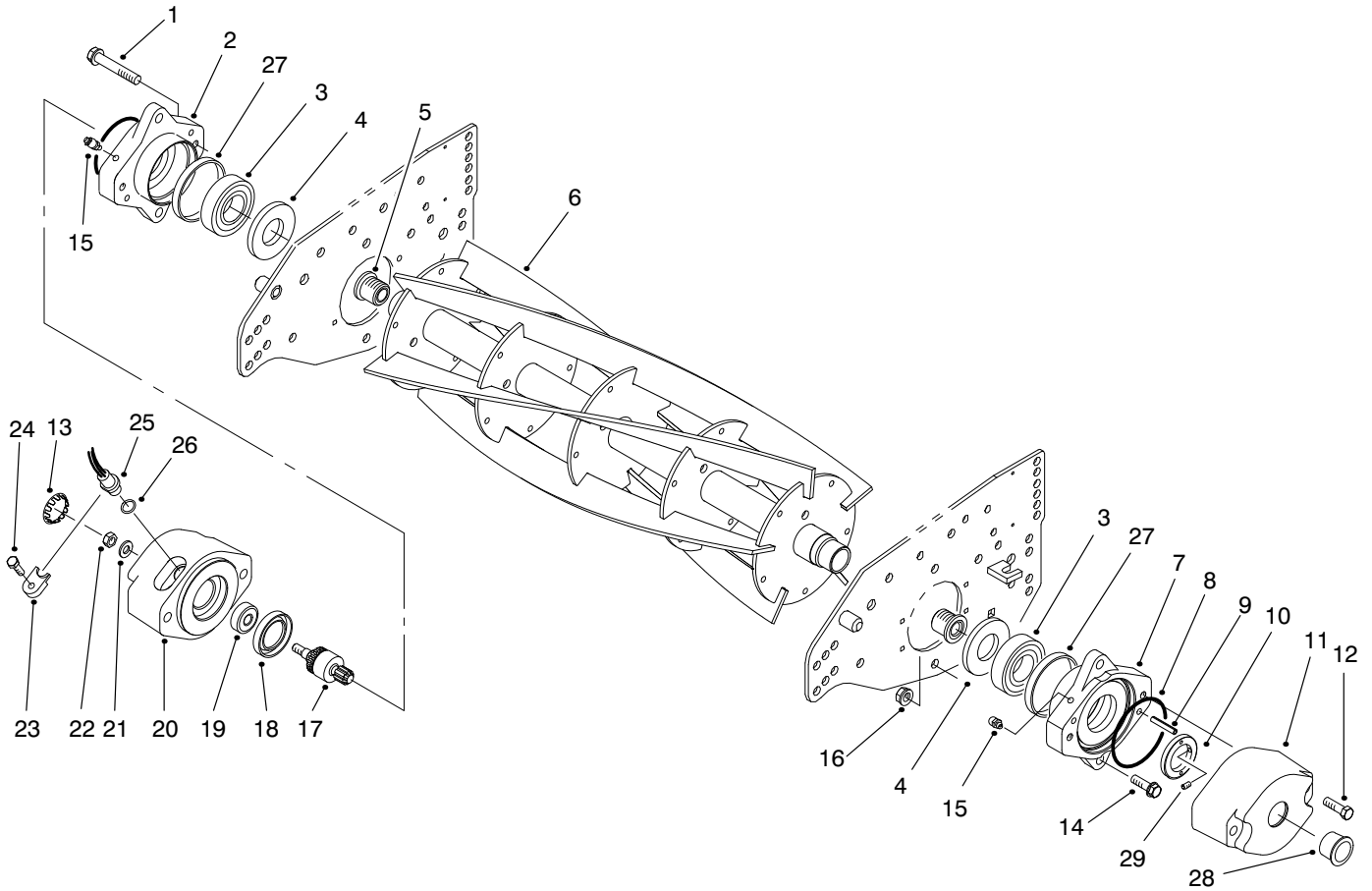
T-1979-2

## REEL & BEARING HOUSING ASSEMBLY

Ref. No.	Part No.	Description	No. Used
1	33105-060	Screw - HHF	2
2	93-9794	Housing - Bearing, RH (Incl. Ref. #27)	1
3	93-2489	Bearing	2
4	94-8908	Seal - Grease	2
5	94-2732	Insert - Threaded RH	1
*	94-2733	Insert - Threaded LH	1
6	94-4337	5 Blade Reel Assembly Model 03854 (Incl. Ref. #5)	1
*	95-2770	7 Blade Reel Assembly Model 03853 (Incl. Ref. #5)	1
*	94-4338	11 Blade Reel Assembly Model 03856 (Incl. Ref. #5)	1

Ref. No.	Part No.	Description	No. Used
7	93-9795	Housing - Bearing, LH (Incl. Ref. #27)	1
8	93-9783	O-Ring (Shipped with Traction Unit)	10
9	32121-69	Pin - Roll	4
10	95-2793	Nut - Bearing Adj.	1
11	94-4347	Weight - End (Shipped with Traction Unit)	3
12	93-7522	Screw - HH	2
13	93-3094	Plug - Cap	1
14	33105-030	Screw - HHF	4
15	302-11	Fitting - Grease 45°	2
16	33025-00	Nut - Lock	4
17	93-3085	Asm. - Shaft, Magnet	1
18	253-165	Seal - Outer	1
19	93-2956	Bearing	1
20	93-3080	Weight - Housing, End	1

\*Not Illustrated

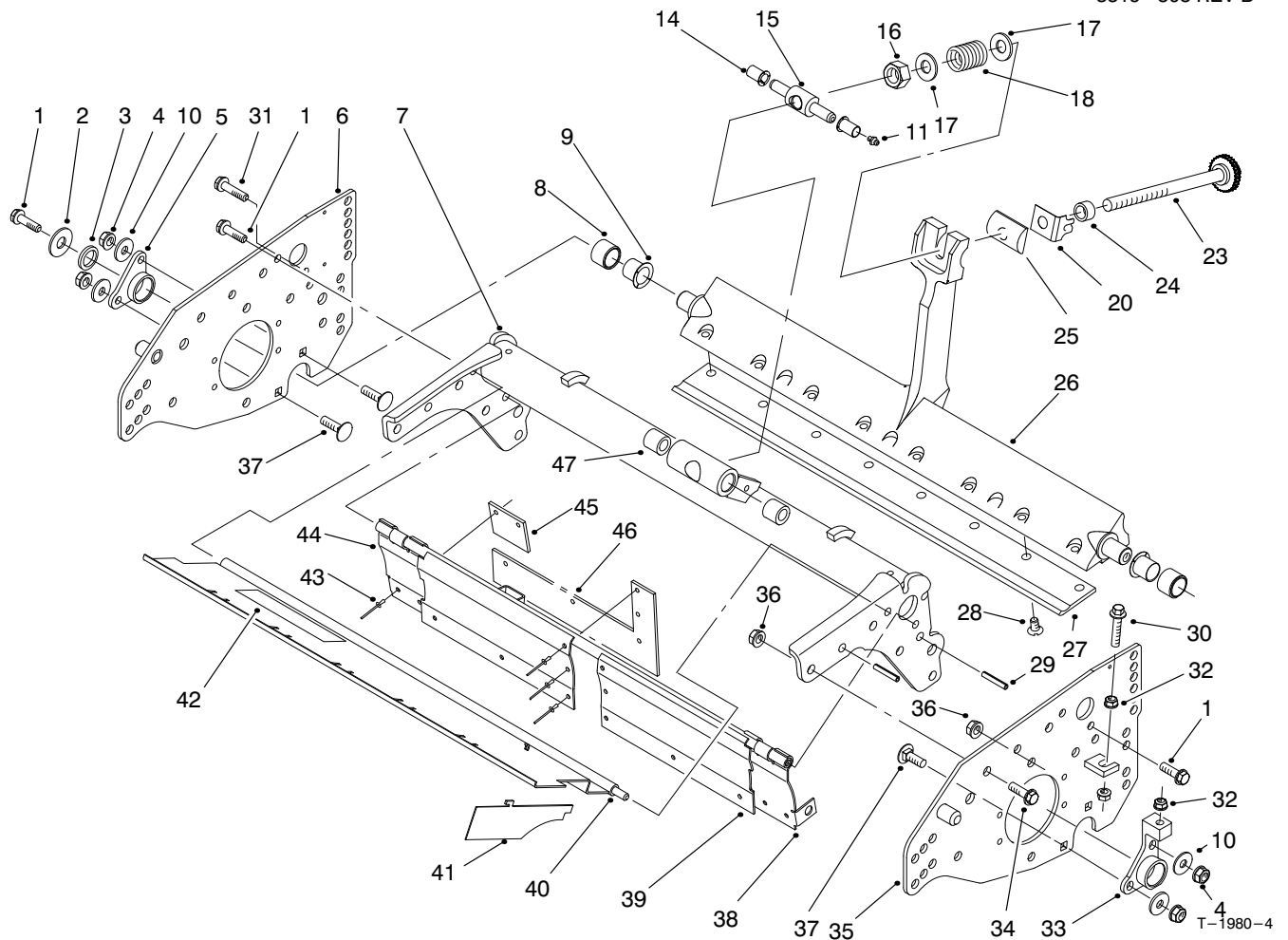


T-1979-2

## REEL & BEARING HOUSING ASSEMBLY (Continued)

Ref. No.	Part No.	Description	No. Used
21	3256-23	Washer - Flat	1
22	33024-00	Nut - Lock	1
23	93-3088	Clamp (Shipped with Traction Unit)	2
24	33103-020	Screw - HH (Shipped with Traction Unit)	2
25	94-6980	Sensor - Speed (Shipped with Traction Unit)	2

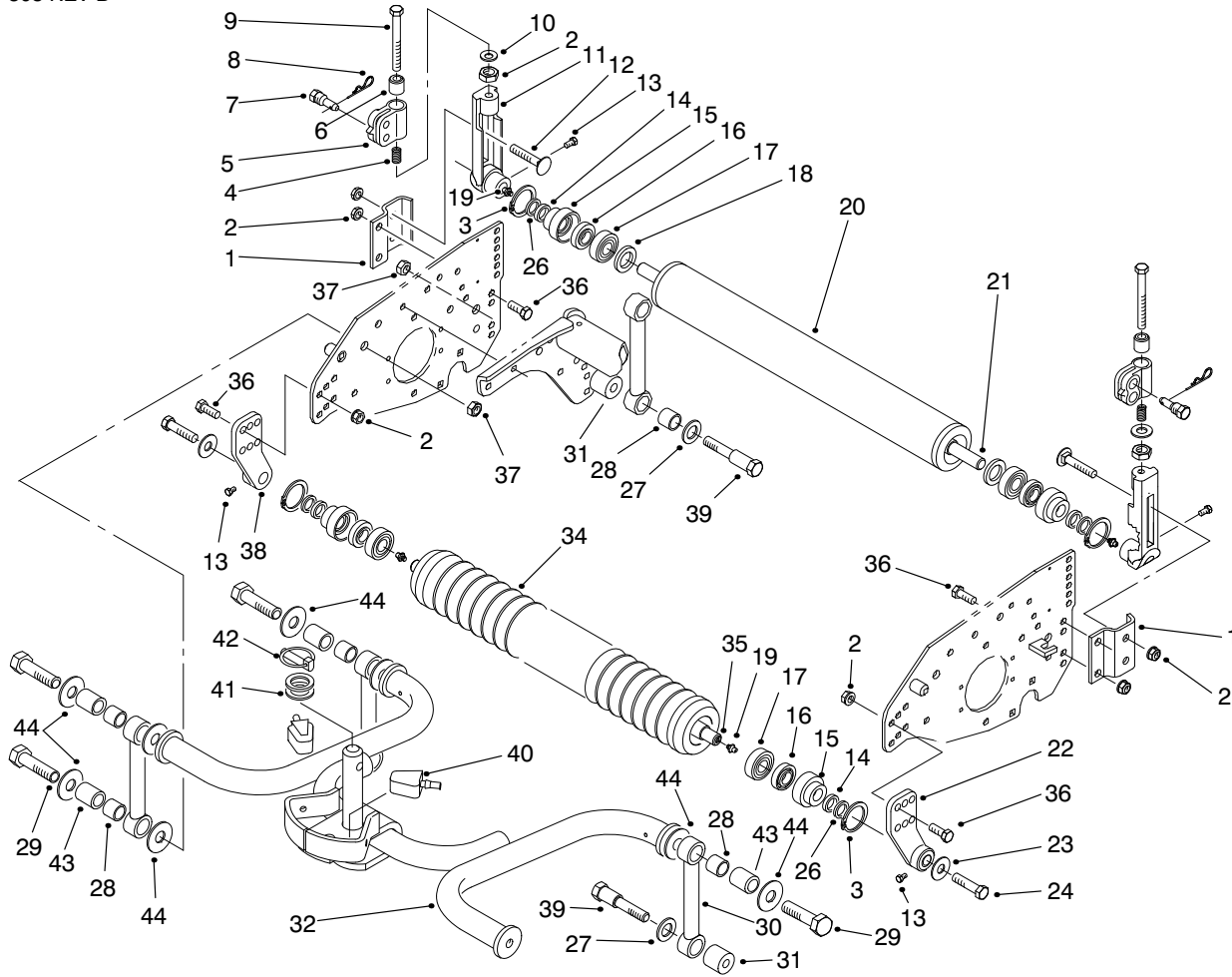
Ref. No.	Part No.	Description	No. Used
26	237-30	O-Ring (Shipped with Traction Unit)	2
27	93-2922	Ring - Bearing	2
28	93-8717	Plug	1
29	3245-42	Screw - Set	1



## FRAME & BEDBAR ASSEMBLY

Ref. No.	Part No.	Description	No. Used	Ref. No.	Part No.	Description	No. Used
1	33104-020	Screw - HHF	3	28	57-4910	Screw - Special	8
2	3256-82	Washer	1	29	32121-36	Pin - Roll	4
3	93-7510	Ring - Quad	1	30	94-3489	Screw	1
4	33024-00	Nut - Lock	4	31	33104-040	Screw - HHF	1
5	93-2513	Pivot Hub RH	1	32	33004-00	Nut - Flange	3
6	93-2981	Sideplate - RH	1	33	93-2512	Pivot Hub LH	1
7	93-9769	Reel Frame	1	34	33105-025	Screw - HHF	8
8	93-7501	Bushing Assembly	2	35	93-2982	Sideplate - LH	1
9	93-7502	Bushing - Flange	2	36	33025-00	Nut - Lock	12
10	33094-00	Washer - Flat	4	37	94-2738	Screw - Carriage	4
11	302-18	Fitting - Grease, Str.	1	38	93-3008	Shield - LT	1
14	52-2890	Bushing - Plastic	2	39	93-2996	Rear Grass Shield	1
15	57-5260	Pivot Screw Adj.	1	40	94-8942	Asm. - Grass Shield (Incl. Ref. #42)	1
16	3296-62	Nut - Lock	1	41	93-9759	Deflector - Grass Shield	5
17	29-8910	Washer	2	42	67-7960	Decal - Danger, Reel	1
18	95-0772	Spring - Compression	1	42	93-6688	Decal - Danger (Europe)	1
20	93-9767	Arm - Spring	1	42	94-4584	Decal - Danger (Japanese)	1
23	95-2762	Bedbar Adjuster Assy.	1	43	700382	Rivet	14
24	93-2959	Spacer - Adjuster	1	44	93-2998	Shield - RT	1
25	93-2892	Pivot - Bedbar, Man. Adj.	1	45	93-3012	Flap - Side	2
26	95-3458	Bedbar	1	46	93-3011	Flap - Bottom	2
27	93-9774	Bedknife - 2.235" (.88 cm)	1	47	62-5510	Bushing	2
*	94-8936	Bedknife - 2.535" (1.00 cm) (Optional)	1				

\*Not Illustrated



T-1981-1

## ROLLERS & 4 BAR FRAME ASSEMBLY

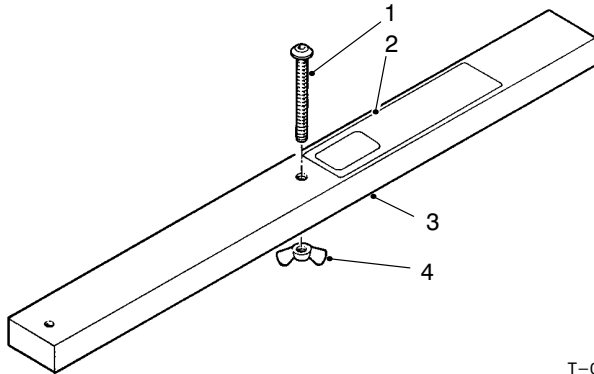
Ref. No.	Part No.	Description	No. Used
1	61-0910	Bracket - Angle	2
2	33025-00	Nut - Lock	12
3	32120-62	Snap Ring	4
4	93-2921	Spring - Compression HOC	2
5	93-2902	Support - HOC, Rear	2
6	94-4344	Spacer	2
7	93-2906	Pin - HOC	2
8	3290-467	Pin - Cotter, Hair	2
9	93-7500	Screw - HH	2
10	93-7509	Washer - Special	2
11	93-2904	Bracket - HOC, Rear	2
12	33125-030	Screw - Carriage	2
13	93-9757	Screw - HH	4
14	253-70	Seal - Oil	4
15	93-1252	Seal - Outer	4
16	93-1251	Seal - Inner	4
17	109966	Bearing - Ball	4
18	93-3007	Seal - Oil	4
19	302-5	Fitting - Grease, Straight	4
20	94-4335	Tube Assy. - Rear Roller	1
21	94-4328	Shaft - Rear Roller	1
22	94-4332	HOC Bracket - Frt. LH	1
23	3290-455	Washer - Belleville	2
24	33115-016	Screw - HH	2

Ref. No.	Part No.	Description	No. Used
26	93-2931	Washer - Roller	4
27	93-3001	Washer	2
28	94-8945	Bushing	8
29	94-2702	Bolt	6
30	93-3087	Link - 4 Bar	4
31	93-9775	Spacer	2
32	93-7407	Frame - 4 Bar	1
34	94-4336	Roller - Wiehle	1
35	94-4329	Shaft - Wiehle Roller	1
36	33105-025	Screw - HHF	8
37	94-4307	Nut - Lock	4
38	94-4333	HOC Bracket - Frt. RH	1
39	93-9777	Bolt - Shoulder, Long	2
40	93-9173	Bumper	2
41	3256-42	Washer - Flat	2
42	283-71	Pin - Lynch	1
43	94-2700	Spacer - Link	6
44	94-2701	Washer - Hardened	12
*	94-4331	Rear Roller Assembly (Incl. Ref. #3, 14-21 & 26)	1
*	94-4330	Wiehle Roller Assembly (Incl. Ref. #3, 14-19, 25 26 & 34-35)	1

\*Not Illustrated

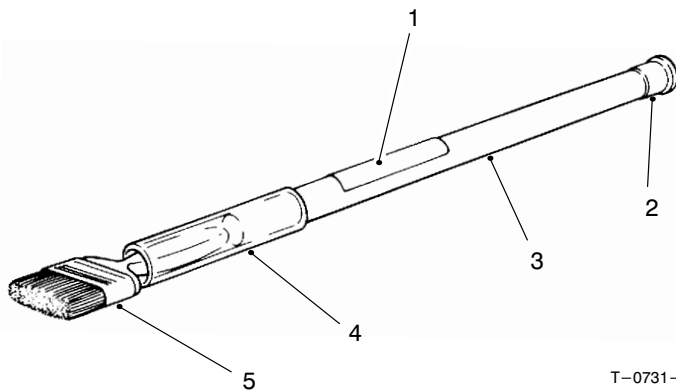
# SPECIAL TOOLS

## GAUGE BAR ASSEMBLY NO. 59-7900



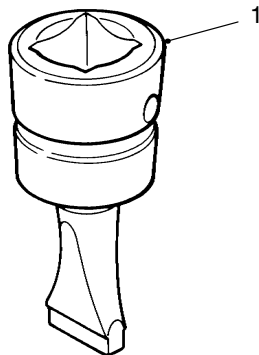
Ref. No.	Part No.	Description	No. Used
1	32122-54	Screw – Mach. Slot. Hd.	1
2	59-7930	Decal	1
3		Bar	1
4	32103-3	Nut – Wing	1

## BACKLAPPING BRUSH ASSEMBLY NO. \*TOR299100



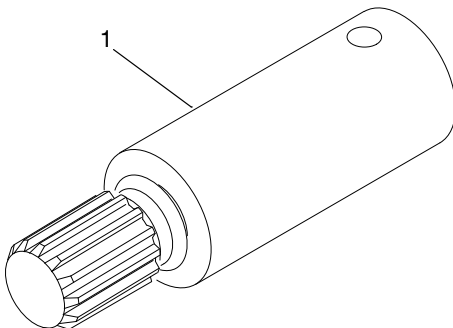
Ref. No.	Part No.	Description	No. Used
1	12-9140	Decal	1
2	2410-18	Plug	1
3	29-9080	Handle	1
4	29-9090	Hose – Handle	1
5	36-4310	Brush	1

## BEDKNIFE SCREW TOOL NO. \*TOR510880



Ref. No.	Part No.	Description	No. Used
1		Tool – Bedknife Screw	1

## REEL DRIVE SHAFT NO. \*TOR4074

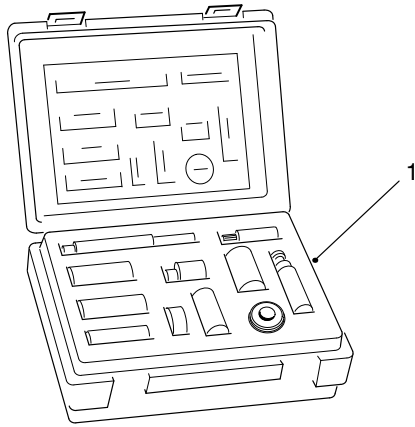


Ref. No.	Part No.	Description	No. Used
1		Shaft – Reel Drive	1

\*Obtain these items directly from OTC 2013 4th St. Owatonna, MN. 55060 1-800-533-0492  
(in Minnesota and Canada 1-507-455-7050) Fax. 507-455-7011.

# SPECIAL TOOLS

## CUTTING UNIT TOOL KIT NO. \*TOR4070



T-2676

Ref. No.	Part No.	Description	No. Used
1	*TOR 4064	Spanner Wrench	1
	*TOR4065	Inner Oil Seal Installer	1
	*TOR4066	Bearing Installer	1
	*TOR4067	Shaft Support Tool	1
	*TOR4068	Inner Seal Installer	1
	*TOR4069	Outer Seal Installer	1
	*TOR4071	Outer Oil Seal Installer	1
	*TOR4072	Reel Motor Shaft Seal Protector	1
	*TOR4073	Handle	1
	*TOR4074	Spline Insert Tool	1

\*Obtain these items directly from OTC 2013 4th St. Owatonna, MN. 55060 1-800-533-0492  
(in Minnesota and Canada 1-507-455-7050) Fax. 507-455-7011.

# TORO PART NUMBER INDEX

3319-308 REV B

Part No.	Description	Pg. No.	Ref. No.	Qty.	Part No.	Description	Pg. No.	Ref. No.	Qty.
109966	Bearing – Ball	4	17	4	94-2702	Bolt	4	29	6
700382	Rivet	3	43	14	94-2732	Insert – Threaded RH	1	5	1
12-9140	Decal	5	1	1	94-2733	Insert – Threaded LH	1	*	1
29-8910	Washer	3	17	2	94-2738	Screw – Carriage	3	37	4
29-9080	Handle	5	3	1	94-3489	Screw	3	30	1
29-9090	Hose – Handle	5	4	1	94-4307	Nut – Lock	4	37	4
36-4310	Brush	5	5	1	94-4328	Shaft – Rear Roller	4	21	1
51-0880	Tool – Bedknife Screw	5	1	1	94-4329	Shaft – Wiehle Roller	4	35	1
52-2890	Bushing – Plastic	3	14	2	94-4330	Wiehle Roller Assembly	4	*	1
57-4910	Screw – Special	3	28	8	94-4331	Rear Roller Assembly	4	*	1
57-5260	Pivot Screw Adj.	3	15	1	94-4332	HOC Bracket – Frt. LH	4	22	1
59-7930	Decal	5	2	1	94-4333	HOC Bracket – Frt. RH	4	38	1
61-0910	Bracket – Angle	4	1	2	94-4335	Tube Assy. – Rear Roller	4	20	1
62-5510	Bushing	3	47	2	94-4336	Roller – Wiehle	4	34	1
67-7960	Decal – Danger, Reel	3	42	1	94-4337	Reel Assembly Model 03854	1	6	1
93-1251	Seal – Inner	4	16	4	94-4338	Reel Assembly Model 03856	1	*	1
93-1252	Seal – Outer	4	15	4	94-4344	Spacer	4	6	2
93-2489	Bearing	1	3	2	94-4347	Weight – End	1	11	3
93-2512	Pivot Hub LH	3	33	1	94-4584	Decal – Danger (Japanese)	3	42	1
93-2513	Pivot Hub RH	3	5	1	94-6980	Sensor – Speed	2	25	2
93-2892	Pivot – Bedbar, Man. Adj.	3	25	1	94-8908	Seal – Grease	1	4	2
93-2902	Support – HOC, Rear	4	5	2	94-8936	Bedknife – 2.535" (1.00 cm)	3	*	1
93-2904	Bracket – HOC, Rear	4	11	2	94-8942	Asm. – Grass Shield	3	40	1
93-2906	Pin – HOC	4	7	2	94-8945	Bushing	4	28	8
93-2921	Spring – Compression HOC	4	4	2	95-0772	Spring – Compression	3	18	1
93-2922	Ring – Bearing	2	27	2	95-2762	Bedbar Adjuster Assy.	3	23	1
93-2931	Washer – Roller	4	26	4	95-2770	Reel Assembly Model 03853	1	*	1
93-2956	Bearing	1	19	1	95-2793	Nut – Bearing Adj.	1	10	1
93-2959	Spacer – Adjuster	3	24	1	95-3458	Bedbar	3	26	1
93-2981	Sideplate – RH	3	6	1	237-30	O-Ring	2	26	2
93-2982	Sideplate – LH	3	35	1	2410-18	Plug	5	2	1
93-2996	Rear Grass Shield	3	39	1	253-70	Seal – Oil	4	14	4
93-2998	Shield – RT	3	44	1	253-165	Seal – Outer	1	18	1
93-3001	Washer	4	27	2	283-71	Pin – Lynch	4	42	1
93-3007	Seal – Oil	4	18	4	302-5	Fitting – Grease, Straight	4	19	4
93-3008	Shield – LT	3	38	1	302-11	Fitting – Grease 45°	1	15	2
93-3011	Flap – Bottom	3	46	2	302-18	Fitting – Grease, Str.	3	11	1
93-3012	Flap – Side	3	45	2	3245-42	Screw – Set	2	29	1
93-3080	Weight – Housing, End	1	20	1	3256-23	Washer – Flat	1	21	1
93-3085	Asm. – Shaft, Magnet	1	17	1	3256-42	Washer – Flat	4	41	2
93-3087	Link – 4 Bar	4	30	4	3256-82	Washer	3	2	1
93-3088	Clamp	1	23	2	3290-455	Washer – Belleville	4	23	2
93-3094	Plug – Cap	1	13	1	3290-467	Pin – Cotter, Hair	4	8	2
93-6688	Decal – Danger (Europe)	3	42	1	3296-627	Nut – Lock	3	16	1
93-7407	Frame – 4 Bar	4	32	1	32103-3	Nut – Wing	5	4	1
93-7500	Screw – HH	4	9	2	32120-62	Snap Ring	4	3	4
93-7501	Bushing Assembly	3	8	2	32121-36	Pin – Roll	3	29	4
93-7502	Bushing – Flange	3	9	2	32121-69	Pin – Roll	1	9	4
93-7509	Washer – Special	4	10	2	32122-54	Screw – Mach. Slot. Hd.	5	1	1
93-7510	Ring – Quad	3	3	1	33004-00	Nut – Flange	3	32	3
93-7522	Screw – HH	1	12	2	33024-00	Nut – Lock	3	4	4
93-8717	Plug	2	28	1	33024-00	Nut – Lock	1	22	1
93-9173	Bumper	4	40	2	33025-00	Nut – Lock	4	2	12
93-9757	Screw – HH	4	13	4	33025-00	Nut – Lock	1	16	4
93-9759	Deflector – Grass Shield	3	41	5	33025-00	Nut – Lock	3	36	12
93-9767	Arm – Spring	3	20	1	33094-00	Washer – Flat	3	10	4
93-9769	Reel Frame	3	7	1	33103-020	Screw – HH	1	24	2
93-9774	Bedknife – 2.235" (.88 cm)	3	27	1	33104-020	Screw – HFF	3	1	3
93-9775	Spacer	4	31	2	33104-040	Screw – HFF	3	31	1
93-9777	Bolt – Shoulder, Long	4	39	2	33105-025	Screw – HFF	3	34	8
93-9783	O-Ring	1	8	10	33105-025	Screw – HFF	4	36	8
93-9794	Housing – Bearing, RH	1	2	1	33105-030	Screw – HFF	1	14	4
93-9795	Housing – Bearing, LH	1	7	1	33105-060	Screw – HFF	1	1	2
94-2700	Spacer – Link	4	43	6	33115-016	Screw – HH	4	24	2
94-2701	Washer – Hardened	4	44	12	33125-030	Screw – Carriage	4	12	2

\*Not Illustrated

