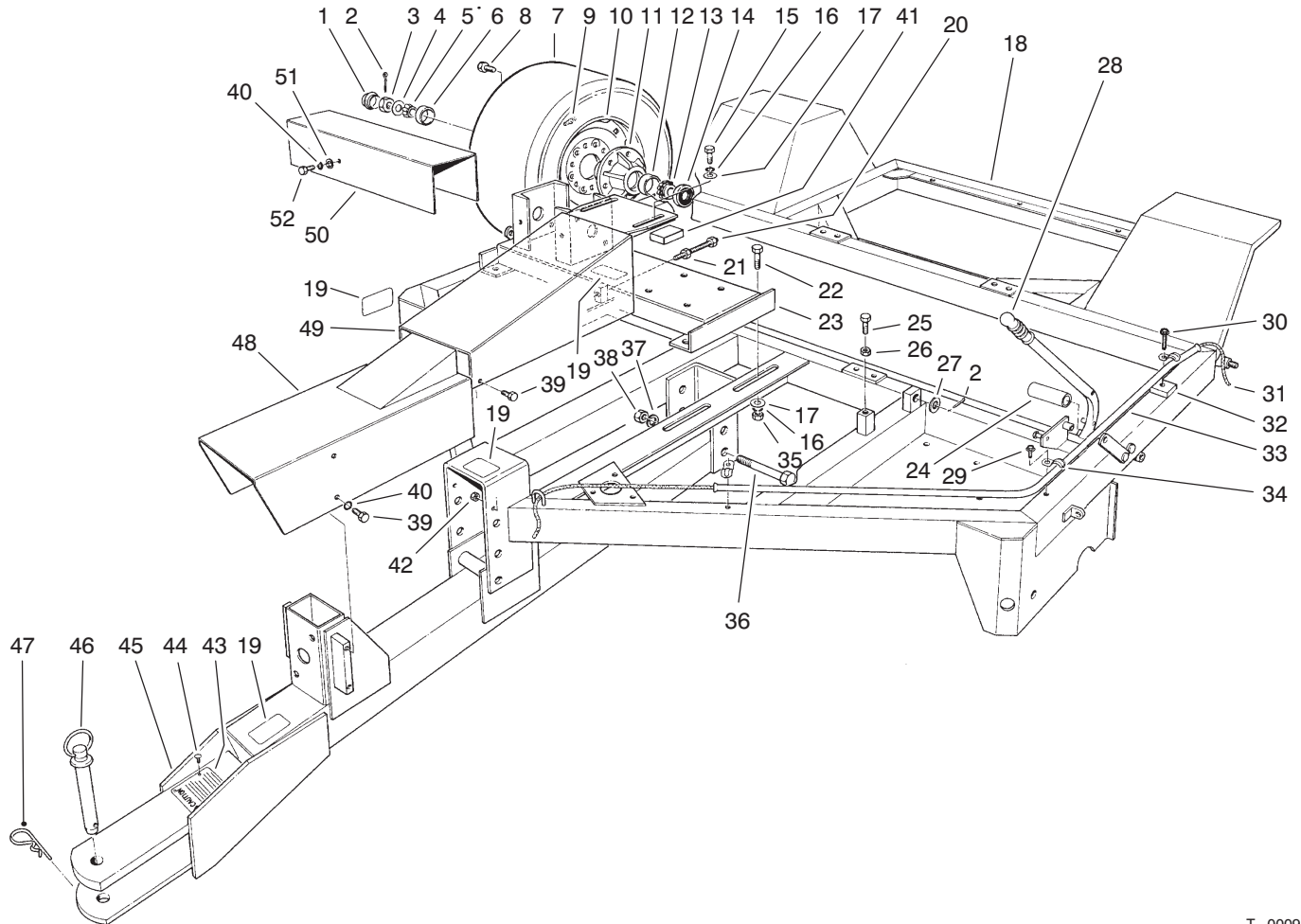


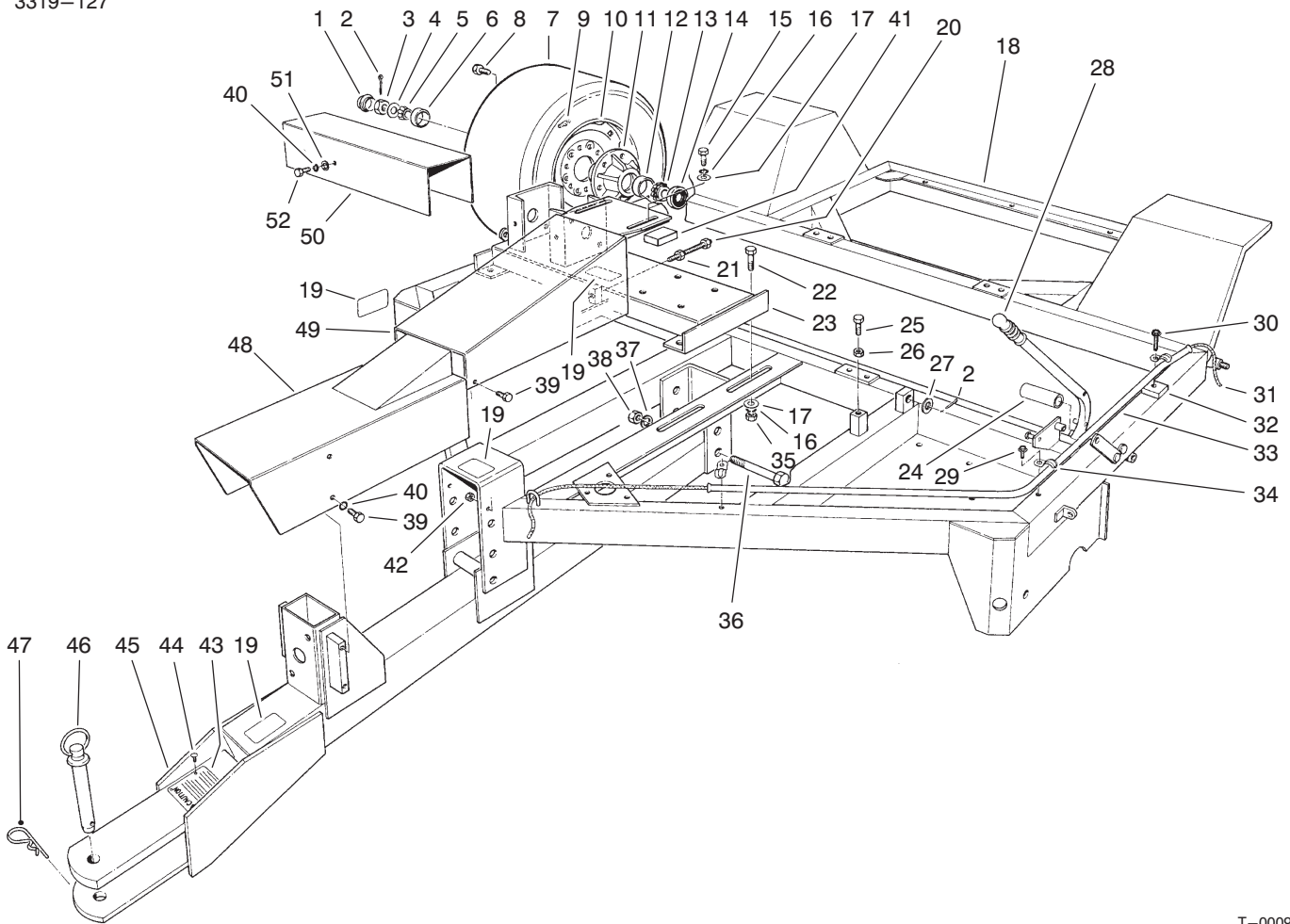

MODEL NO. 07050-70001 & UP
MODEL NO. 07052-70001 & UP
PARTS
CATALOG
66" RAKE-O-VAC® SWEEPER


T-0009

FRAME ASSEMBLY (Model No. 07052)

Ref. No.	Part No.	Description	No. Used
1	242-55	Cap - Hub	2
2	3272-17	Pin - Cotter	3
3	32136-1	Nut - Slotted	2
4	3256-29	Washer - Flat	2
5	254-62	Cone - Bearing	2
6	254-61	Cup - Bearing	2
7	93-0181	Tire	2
8	217-103	Bolt - Wheel	12
9	232-27	Stem - Valve	2
10	93-0182	Asm - Wheel	2
11	242-54	Wheel - Hub (Incl. Ref. #6 & 12)	2
12	254-66	Cup - Bearing	2
13	254-65	Cone - Bearing	2
14	253-127	Seal	2
15	325-3	Screw - Hex. Hd.	2
16	3253-7	Washer - Lock	6
17	3256-26	Washer - Flat	6

Ref. No.	Part No.	Description	No. Used
18	13-6120	Frame	1
19	67-5360	Decal - Caution	4
20	13-6240	Rod - Adjustment	1
21	3218-6	Nut - Jam	1
22	325-5	Screw - Hex. Hd.	4
23	13-6000	Base - Box, Gear	1
24	3-3107	Hose	1
25	323-8	Screw - Hex. Hd.	1
26	3218-3	Nut - Jam	1
27	3256-28	Washer - Flat	1
28	235-15	Grip - Handle	1
29	32104-95	Screw - Self-Tapping	2
30	32104-96	Screw - Self-Tapping	1
31	20-9580	Rope - Latch	1
32	13-6910	Spacer - Guide, Rope	1
33	13-6890	Guide - Rope	1
34	2412-40	Clamp - Conduit	3
35	3217-9	Nut - Hex	4

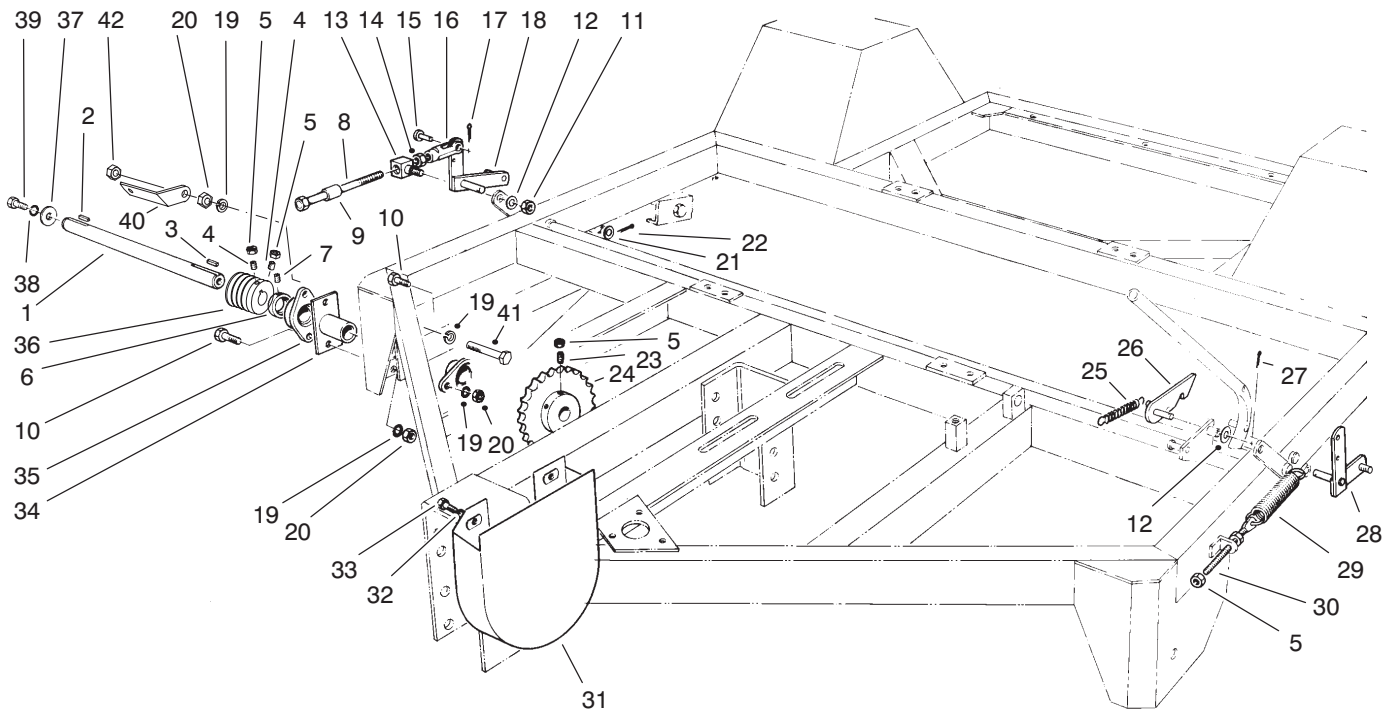


T-0009

FRAME ASSEMBLY (Model No. 07052)

Ref. No.	Part No.	Description	No. Used
36	328-23	Bolt - Hex. Hd.	2
37	3253-9	Washer - Lock	2
38	3217-12	Nut - Hex	2
39	323-2	Screw - Hex. Hd.	6
40	3253-21	Washer - Lock	6
41	93-7709	Pad	1
42	32153-2	Nut - Lock	2
43	13-7460	Plate - Caution, Hitch	1
44	3259-15	Screw - Drive	4
45	13-4310	Tongue	1

Ref. No.	Part No.	Description	No. Used
46	13-6200	Pin - Hitch (Incl. Ref. #47)	1
47	3290-343	Pin - Hair, Cotter	1
48	13-5870	Shield - Front	1
49	13-5880	Shield - Shaft, Drop	1
50	13-5790	Shield - Shaft, Side	1
51	3256-24	Washer - Flat	4
52	325-5	Screw - Hex. Hd.	4

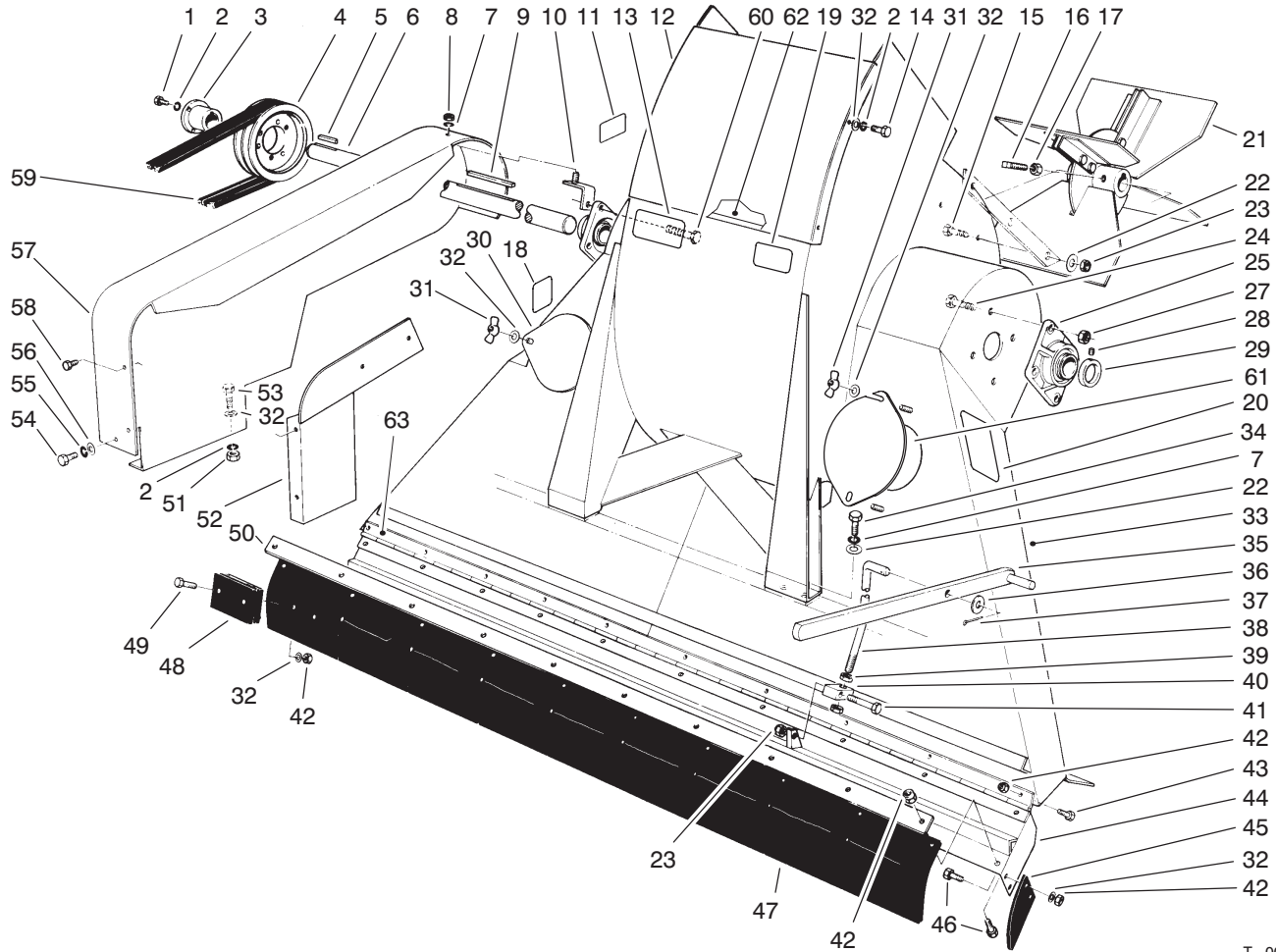


T-0011-1

JACKSHAFT & LIFTING MECHANISM (Model No. 07052)

Ref. No.	Part No.	Description	No. Used
1	93-4032	Shaft - Jack	1
2	68-3220	Key - Square	1
3	5-1718	Key - Square	1
4	3243-6	Screw - Set	2
5	3218-3	Nut - Jam	8
6		Collar - Lock	2
7		Screw - Set	2
8	13-6260	Screw	2
9	13-5520	Spacer	2
10	324-7	Screw - Hex. Hd.	3
11	32153-2	Nut	2
12	3256-24	Washer - Flat	2
13	13-0100	Block - Pivot	2
14	3219-3	Nut - Hex.	2
15	283-2	Pin - Clevis	2
16	282-22	Clevis	2
17	3272-10	Pin - Cotter	2
18	93-4440	Bell Crank - Lift, R.H.	1
19	3253-6	Washer - Lock	5
20	3217-8	Nut - Hex.	4
21	3256-28	Washer - Flat	2
22	3272-22	Pin - Cotter	2

Ref. No.	Part No.	Description	No. Used
23	3247-6	Screw - Set	2
24	13-4880	Sprocket	1
25	13-0480	Spring	1
26	13-3990	Handle - Trip	1
27	3272-10	Pin - Cotter	1
28	13-5500	Bell Crank - Lift, L.H.	1
29	13-0050	Spring	2
30	13-5530	Rod - Adjustment, Spring	2
31	13-4490	Guard - Sheave	1
32	3253-4	Washer - Lock	2
33	322-7	Screw - Hex. Hd.	2
34	63-5210	Spindle - Driveside	1
35	56-6230	Bearing (Incl. Ref. #6 & 7)	2
36	93-4033	Pulley - Driver	1
37	13-3710	Washer - Special	1
38	3253-3	Washer - Lock	1
39	321-4	Screw - Hex. Hd.	1
40	93-4438	Bracket - Belt Guard	1
41	324-10	Screw - Hex. Hd.	1
42	3296-48	Nut - Lock	1

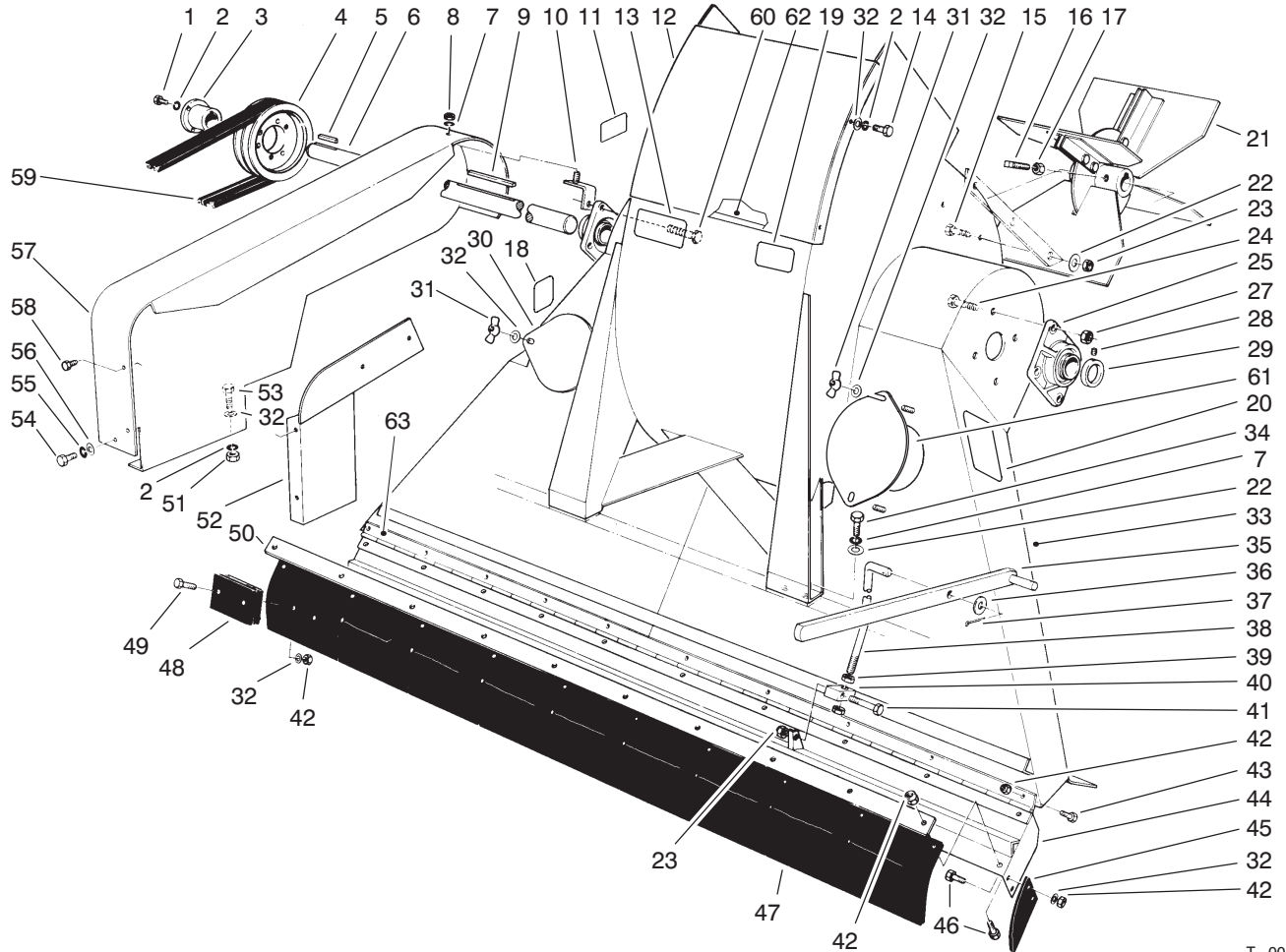


T-0013-3

BLOWER & THROAT ASSEMBLY (Model No. 07052)

Ref. No.	Part No.	Description	No. Used
1	321-13	Screw - Hex. Hd.	3
2	3253-3	Washer - Lock	9
3	13-6070	Bushing (Incl. Ref. #1 & 2)	1
4	13-6030	Pulley	1
5	13-2240	Key - Square	1
6	13-3790	Shaft - Fan	1
7	3253-21	Washer - Lock	9
8	3217-7	Nut - Hex	1
9	13-2810	Key - Square	1
10	13-3350	Bracket - Mounting	1
11	67-5360	Decal	1
12	13-3850	Plate - Blower Access	1
13	13-6410	Decal	1
14	321-4	Screw - Hex. Hd.	4
15	323-7	Screw - Hex. Hd.	6
16	3244-14	Screw - Set, Square Hd.	4
17	3218-5	Nut - Hex.	4
18	92-8309	Decal - Warning	1
19	93-7307	Decal - Warning	1
20	93-4041	Decal - Op. Instructions	1
21	13-3420	Asm-Fan	1
22	3256-24	Washer - Flat	14
23	3296-39	Nut - Lock	7
24	325-6	Screw - Hex. Hd.	7
25	56-6220	Bearing (Incl. Ref. #28 & 29)	2

Ref. No.	Part No.	Description	No. Used
27	32153-5	Nut - Lock	8
28		Screw - Set	2
29		Collar - Locking	2
30	13-1420	Cover - Inspection	1
31	32103-12	Nut - Wing	4
32	3256-22	Washer - Flat	32
33	13-6280	Blower and Throat (Incl. Ref. #2,11-14,18-20, 30-32 & 61-62)	1
34	323-6	Screw - Hex. Hd.	8
35	13-6390	Handle - Flap	1
36	3256-27	Washer - Flat	1
37	3272-12	Pin - Cotter	1
38	13-6360	Rod - Lift, Flap	1
39	3218-6	Nut - Jam	2
40	13-0330	Block - Pivot	1
41	323-9	Screw - Hex. Hd.	1
42	3296-42	Nut - Lock	52
43	321-3	Screw - Hex. Hd.	20
44	95-3112	Flap - Lower	1
45	13-3130	Flap - End	2
46	321-5	Screw - Hex. Hd.	14
47	13-4700	Flap - Rubber (Incl. Ref. #32, 42, 48 & 49)	1
48	13-4560	Weight - Flap	18
49	321-8	Screw - Hex. Hd.	18
50	13-1390	Retainer - Flap	1

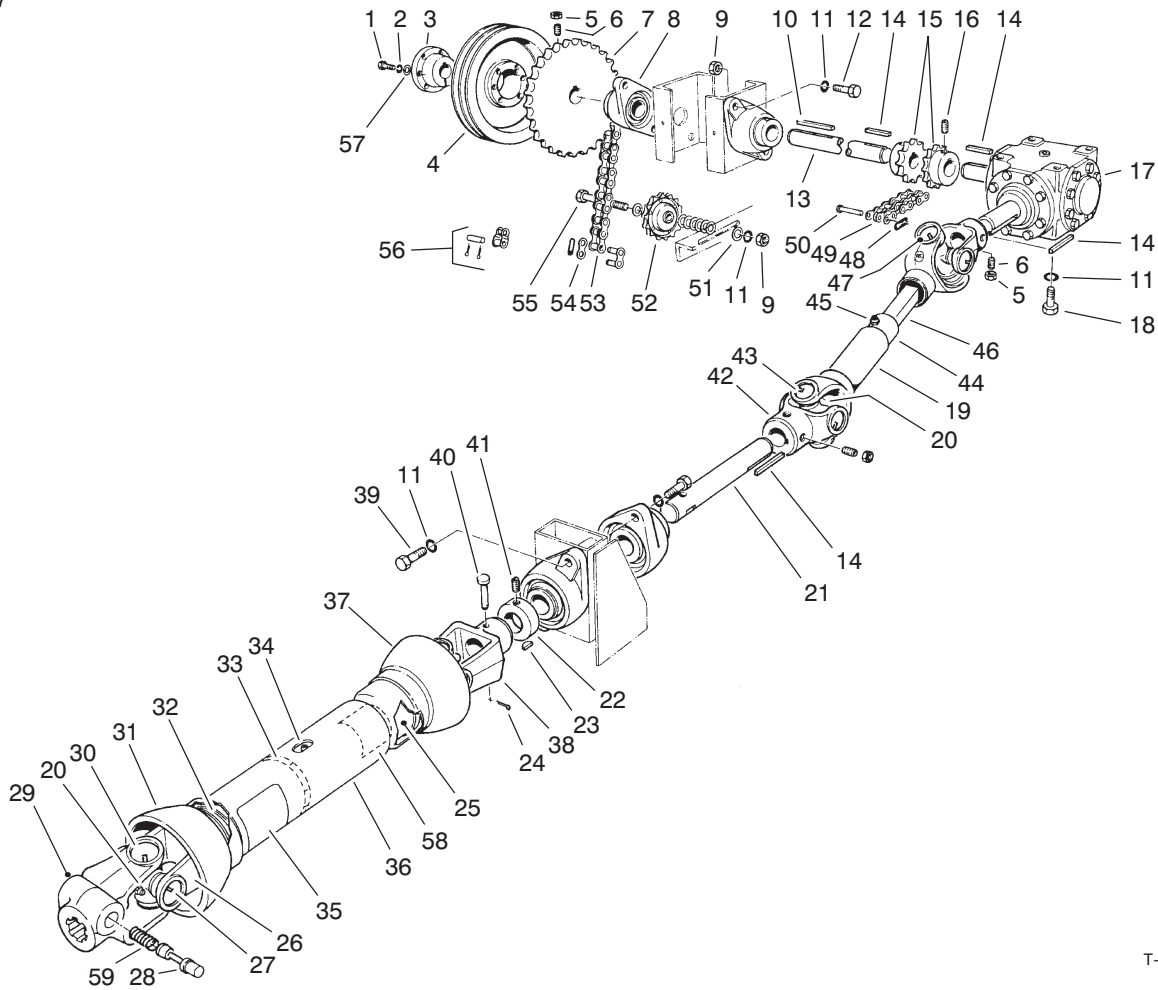


T-0013-3

BLOWER & THROAT ASSEMBLY (Model No. 07052) (Continued)

Ref. No.	Part No.	Description	No. Used
51	3217-5	Nut - Hex.	2
52	13-6090	Cover - Guard, Side	1
53	321-4	Screw - Hex. Hd.	2
54	322-1	Screw - Hex. Hd.	1
55	3253-4	Washer - Lock	1
56	3256-23	Washer - Flat	1
57	13-4800	Guard - Belt	1

Ref. No.	Part No.	Description	No. Used
58	32104-109	Screw - Hex. Hd.	4
59	13-2640	Belt	1
60	325-7	Screw - Hex. Hd.	1
61	93-4020	Cover - Inspection	1
62	93-7708	Strip - Sealing	1
63	95-3114	Hinge - Continuous	1

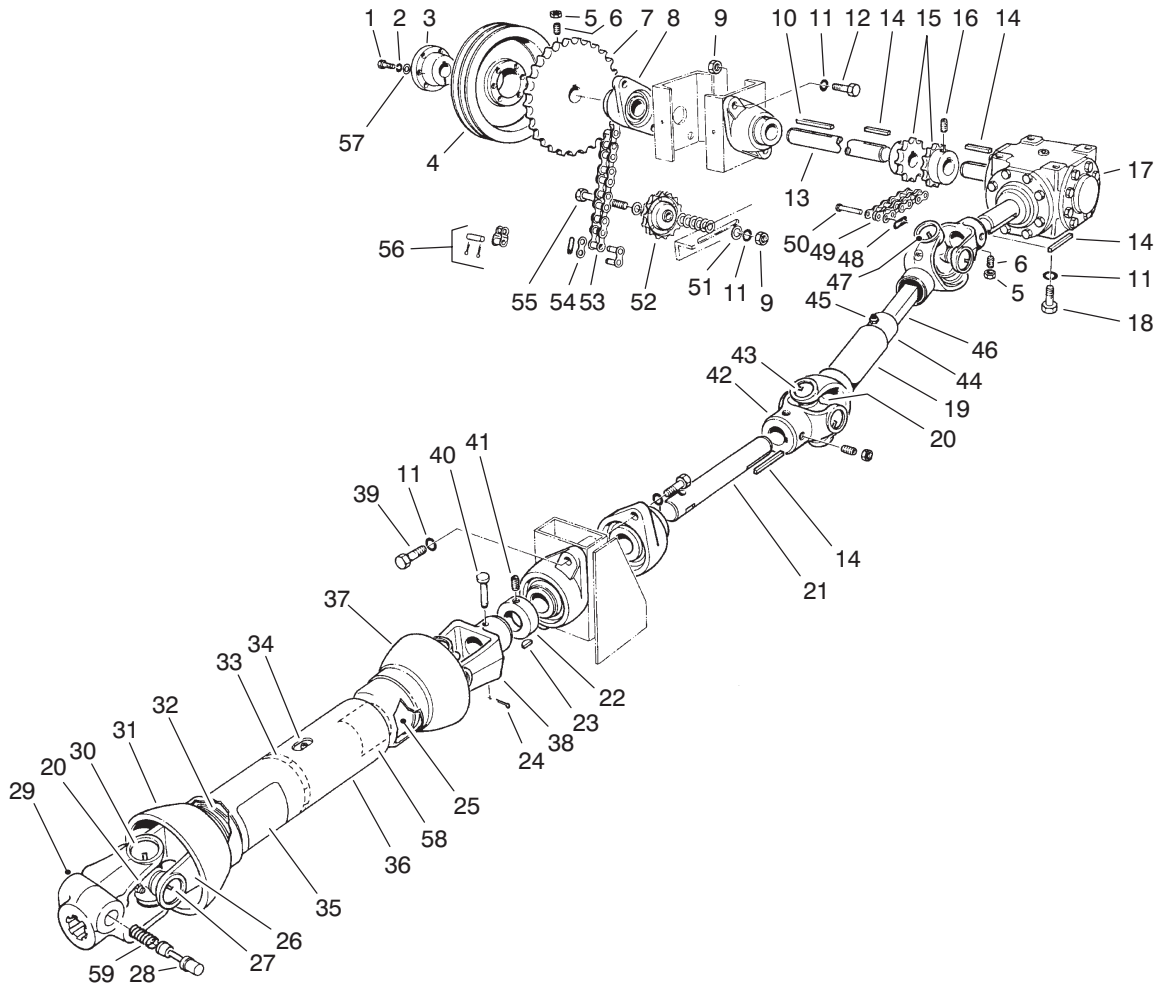


T-0008

DRIVE SHAFTS & GEAR BOX (Model No. 07052)

Ref. No.	Part No.	Description	No. Used
1	322-7	Screw - Hex. Hd.	3
2	3253-4	Washer - Lock	3
3	13-6050	Bushing (Incl. Ref. #1 & 2)	1
4	13-6020	Sheave	1
5	3218-3	Nut - Jam	6
6	3247-6	Screw - Set	6
7	13-6110	Sprocket	1
8	56-6250	Bearing (Incl. Ref. #22 & 41)	4
9	3217-9	Nut - Hex.	5
10	13-3720	Key - Square	1
11	3253-7	Washer - Lock	13
12	325-6	Screw - Hex. Hd.	4
13	13-5910	Shaft - Drive, Side	1
14	5-0738	Key - Square	4
15	13-6690	Coupling Half	2
16	3247-3	Screw - Set	4
17	70-2350	Gear Box - Complete	1
18	325-4	Screw - Hex. Hd.	4
19	42-1870	Asm-Rear Shaft (Incl. Ref. #20 & 42-47)	1
20	2115-80	Fitting - Grease	4
21	13-5900	Shaft - Drive, Front	1
22	251-246	Collar - Locking, Eccentric (Incl. Ref. #41)	4
23	3257-8	Key - Woodruff	1

Ref. No.	Part No.	Description	No. Used
24	3272-6	Pin - Cotter	1
25	42-2360	Asm-Yoke & Tube (Incl. Ref. #34 & 58)	1
26	42-2370	Yoke and Shaft	1
27	2115-79	Ring - Lock	8
28	2115-81	Pin - Quick Detach	1
29	42-2310	Yoke - Front (Incl. Ref. #28 & 59)	1
30	2115-88	Kit-Bearing & Cross (Incl. Ref. #20 & 27)	2
31	42-2380	Shield - Outer (Incl. Ref. #35)	1
32	92-1580	Kit-Bearing, Shield	2
33	42-2340	Centralizer - Guard	1
34	2115-85	Fitting - Grease	1
35	92-1582	Decal - Safety	1
36	42-1860	Asm-Front Shaft (Incl. Ref. #20, 25, 35, 37, 38, 58 & 59)	1
37	42-2350	Shield - Inner	1
38	2115-94	Yoke - Rear	1
39	325-5	Screw - Hex. Hd.	4
40	283-46	Pin - Clevis	1
41	325-4	Screw - Set	8
42	2115-81	Yoke	2
43	2115-76	Kit - Center Parts	2
44	42-2290	Yoke and Tube	1



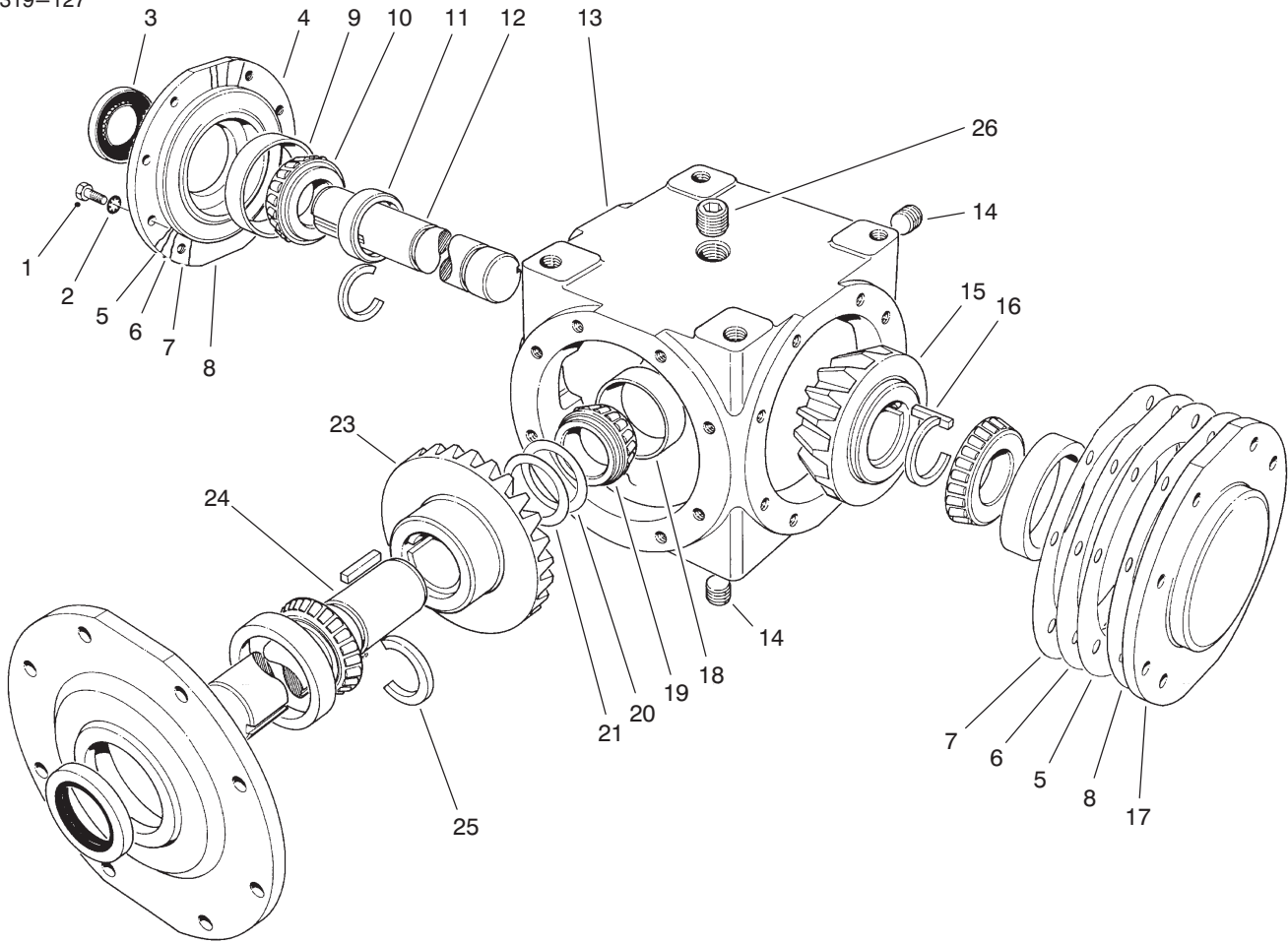
T-0008

DRIVE SHAFTS & GEAR BOX (Model No. 07052) (Continued)

Ref. No.	Part No.	Description	No. Used
45	302-2	Fitting - Grease	1
46	42-2300	Yoke and Shaft	1
47	2115-78	Ring - Lock	8
48		Clip - Pin, Connector	1
49	13-6680	Chain	1
50	13-6670	Pin - Connector (Incl. Ref.#48)	1
51	3256-26	Washer - Flat	8
52	13-4570	Sprocket - Idler	1

Ref. No.	Part No.	Description	No. Used
53	13-4590	Chain	1
54	2710-30	Link - Connecting	1
55	325-12	Screw - Hex. Hd.	1
56	2710-29	Link - Offset	1
57	3256-23	Washer - Flat	3
58	92-1581	Decal - Safety	1
59		Spring	1
*	92-1187	Kit-Quick Disconnect (Incl. Ref. # 28, & 59)	1

*Not Illustrated

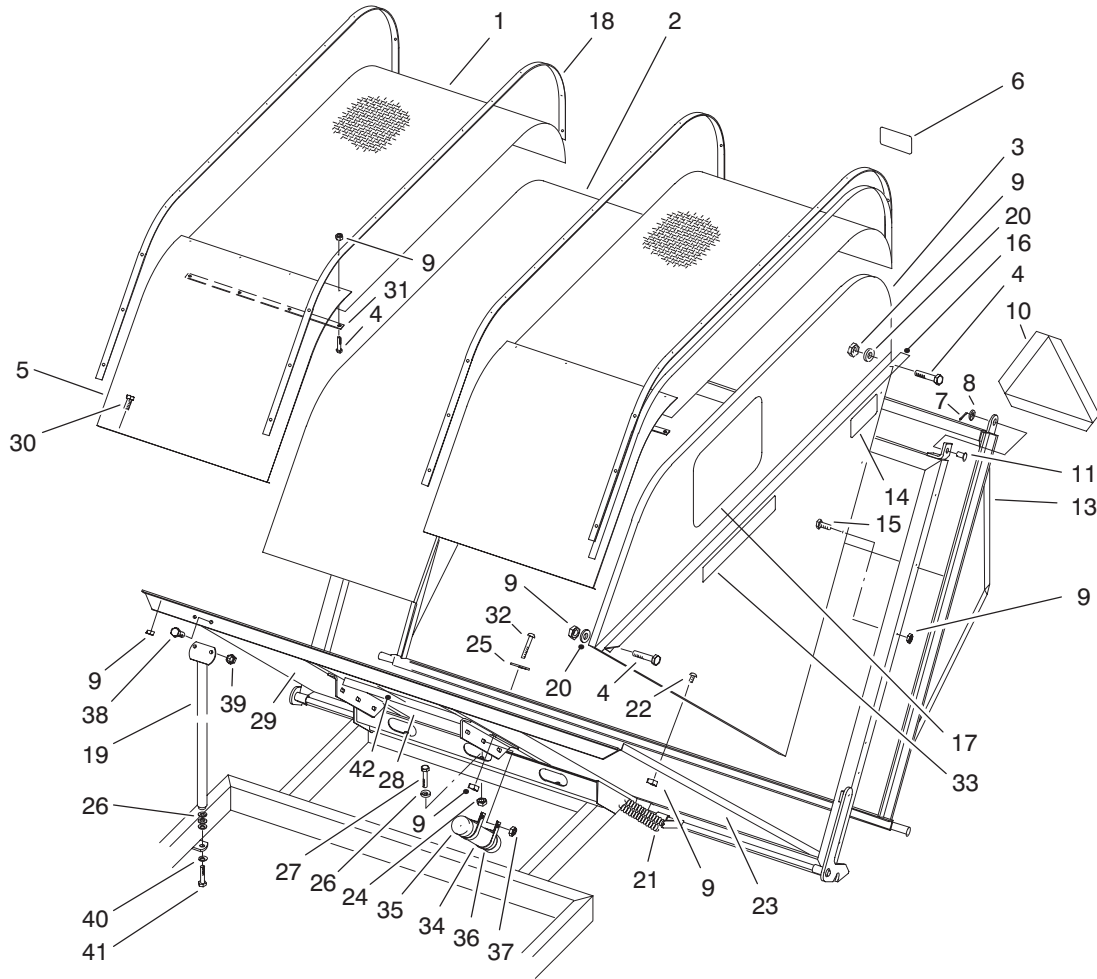


T-0014

GEAR BOX ASSEMBLY (Model No. 07052)

Ref. No.	Part No.	Description	No. Used
1	322-5	Screw - Hex. Hd.	24
2	3254-2	Washer - Lock	24
3	13-6520	Seal	2
4	70-2420	Cap	2
5	13-6490	Gasket - .002 Thk.	A/R
6	13-6610	Gasket - .003 Thk.	A/R
7	13-6600	Gasket - .005 Thk.	A/R
8	13-6590	Gasket - .015 Thk.	A/R
9	254-57	Cup - Bearing	3
10	254-58	Cone - Bearing	3
11	70-2440	Collar - Thrust	1
12	93-4430	Shaft	1
13	13-6650	Housing	1

Ref. No.	Part No.	Description	No. Used
14	285-12	Plug - Pipe	2
15	70-2450	Gear - 17 Tooth	1
16	70-2380	Key - Tapered	2
17	70-2360	Cap	1
18	254-61	Cup - Bearing	1
19	254-62	Cone - Bearing	1
20	13-6540	Shim - .010 Thk.	A/R
21	13-6630	Shim - .005 Thk.	A/R
23	70-2370	Gear - 23 Tooth	1
24	70-2390	Shaft	1
25	70-2410	Ring - Retaining	3
26	59-1460	Plug - Vent	1



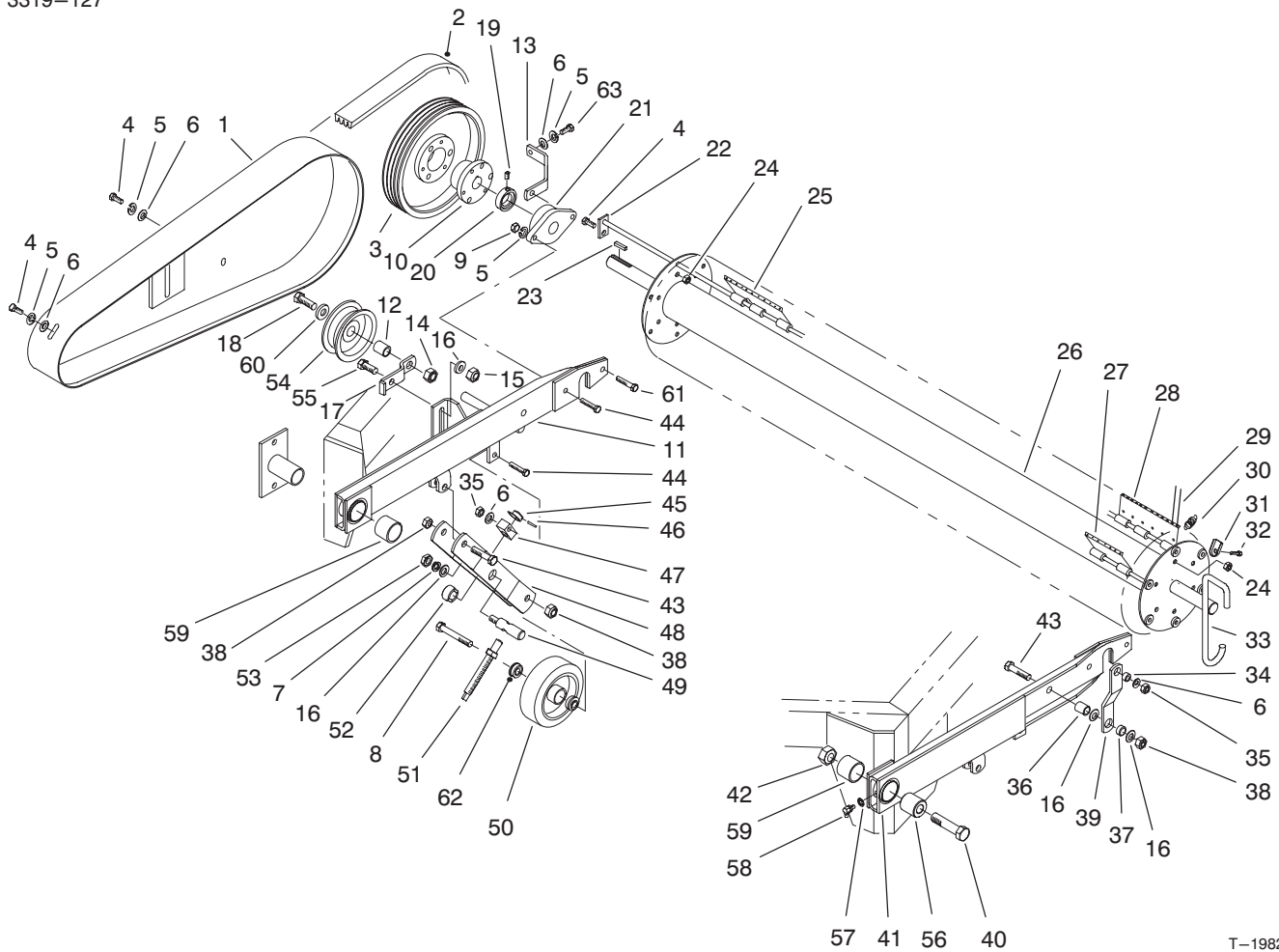
T-0007-1

HOPPER & REAR TAILGATE

Ref. No.	Part No.	Description	No. Used
1	94-9141	Screen - Top	2
2	94-9135	Panel - Top	1
3	94-9129	Panel - L.H.	1
*	94-9133	Panel - R.H.	1
4	3234-33	Screw - Hex Flange Hd.	96
5	94-9128	Panel - Front	2
6	13-6760	Decal - Caution	1
7	3272-12	Pin - Cotter	3
8	3256-27	Washer - Flat	3
9	32128-32	Nut - Lock	193
10	13-2930	Decal - Slow Moving Vehicle	1
11	283-39	Pin - Clevis	3
13	93-4003	Gate	1
14	13-7430	Decal -Warning	1
15	3229-7	Bolt - Carriage	50
16	13-7340	Stiffener - L.H.	1
*	13-7330	Stiffener - R.H.	1
17	67-7920	Decal - Toro	2
18	93-4031	Strap - Hopper, Top	4
19	93-4042	Support	2
20	3256-55	Washer - Flat	28
21	12-8810	Spring	2
22	32122-42	Screw - Machine	36

Ref. No.	Part No.	Description	No. Used
23	94-9139	Panel - Bottom, L.H.	1
24	3296-23	Nut - Lock	3
25	13-3710	Washer - Flat	2
26	3256-26	Washer - Flat	9
27	325-6	Screw - Hex. Hd.	3
28	94-9138	Panel - Bottom, (Middle)	1
29	94-9137	Panel - Bottom, (R.H.)	1
30	3250-32	Screw - Phillips Pan Hd.	9
31	93-4030	Strap - Hopper, Front	2
32	3258-165	Screw - Rd. Hd.	2
33	93-0184	Decal - Hopper	2
34	65-5871	Tube - Manual	1
35	65-5890	Cap - Tube	2
36	2412-102	R-Clamp	2
37	32153-2	Nut - Lock	2
38	323-6	Screw - Hex Hd.	4
39	3296-39	Nut - Lock	4
40	3253-7	Washer - Lock	2
41	325-7	Screw - Hex Hd.	2
42	93-7708	Strip - Sealing	1
*	92-2409	Asm-Hopper (Incl. Ref. #1-9, 11-18, 20, 22-23, 25, 28-33 & 42)	1

*Not Illustrated



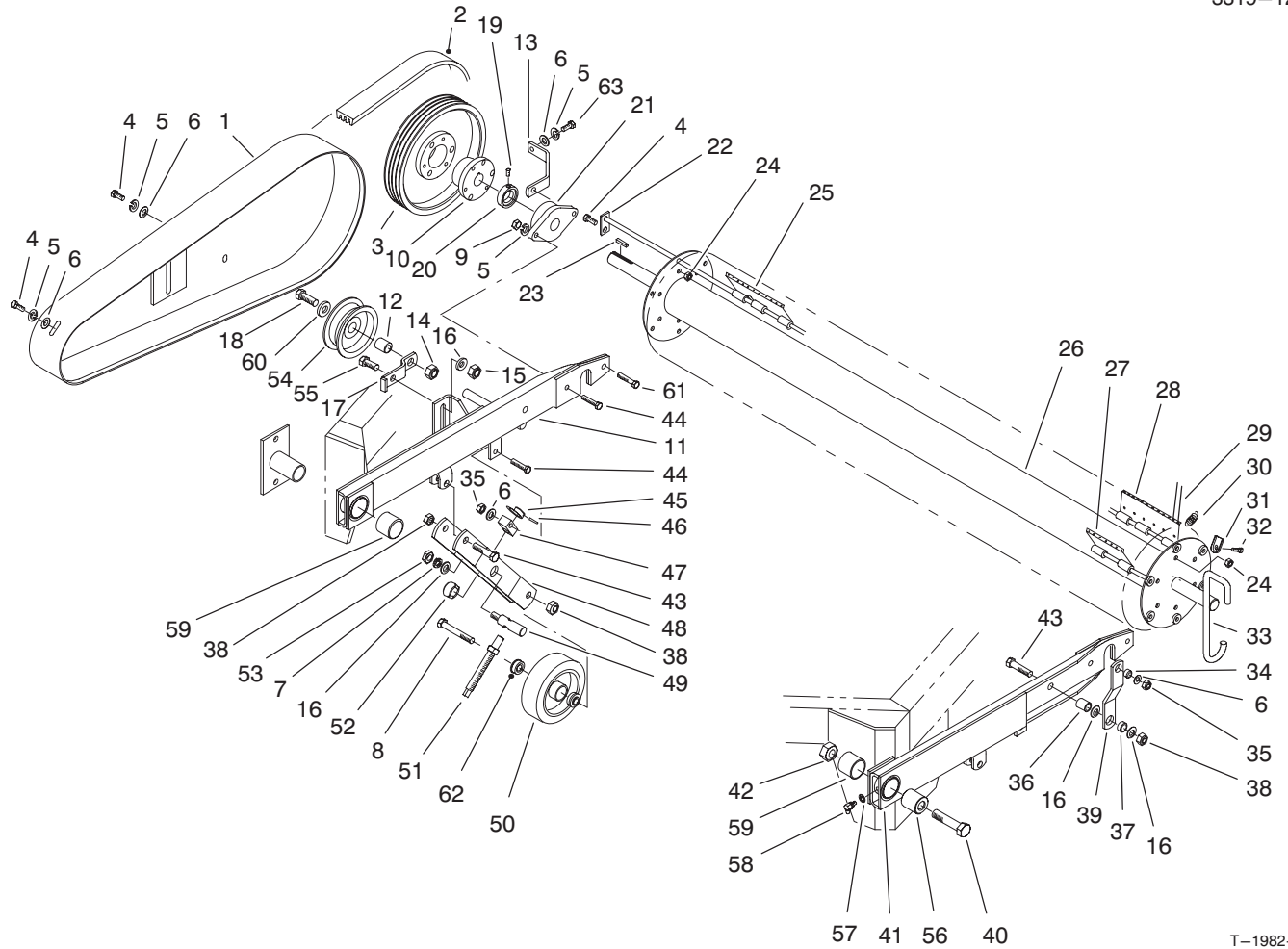
T-1982-1

FLEX TIP REEL & TRAILING ARM

Ref. No.	Part No.	Description	No. Used
1	93-4422	Guard - Belt	1
2	93-4034	V-Belt	1
3	93-4001	Pulley - 4 Groove	1
4	323-4	Screw - Hex. Hd.	6
5	3253-21	Washer - Lock	7
6	3256-24	Washer - Flat	7
7	3253-7	Washer - Lock	2
8	325-14	Screw - Hex. Hd.	2
9	3217-7	Nut - Hex.	4
10	13-2680	Bushing	1
11	93-4445	Trailing Arm - R.H. (Incl. Ref. #59)	1
12	93-4428	Spacer - Pulley	1
13	93-4434	Support Bracket	1
14	3296-53	Nut - Lock	1
15	3296-23	Nut - Lock	1
16	3256-26	Washer - Flat	7
17	93-4433	Pulley Bracket	1
18	327-6	Screw - Hex. Hd.	1
19		Screw - Set	2
20		Collar - Locking	2
21	56-6230	Bearing (Incl. Ref. #19 & 20)	2
22	13-4960	Shaft - Plate, Finger	6
23	13-2840	Key - Square	1
24	32152-2	Nut - Lock	12

Ref. No.	Part No.	Description	No. Used
25	93-0189	Asm-End Plate, Stake	3
26	93-0197	Flex Tip - Reel	1
27	93-0185	Asm-Center Plate, Stake	60
28	93-0187	Asm-End Plate, Stake	3
29	13-6700	Finger - Nylon	276
30	13-3090	Spring	66
31	13-2480	Clamp - Finger	276
32	32140-94	Screw - Hex. Hd.	276
33	93-7711	Hook - Transport	2
34	13-0560	Spacer	2
35	32153-2	Nut	4
36	13-0360	Spacer	2
37	13-3070	Spacer	2
38	32153-5	Nut	6
39	13-5540	Link - Lift	2
40	328-10	Bolt - Hex. Hd.	1
41	63-5300	Trailing Arm-L.H. (Incl. Ref. #59)	1
42	32153-6	Nut	1
43	325-9	Screw - Hex. Hd.	4
44	323-9	Screw - Hex. Hd.	5
45	13-0320	Collar - Lock	2
46	32121-45	Pin - Roll	2
47	13-0330	Block - Pivot	2
48	13-5550	Arm - Gauge Wheel	2
49	13-5570	Bar - Pivot	2

*Not Illustrated



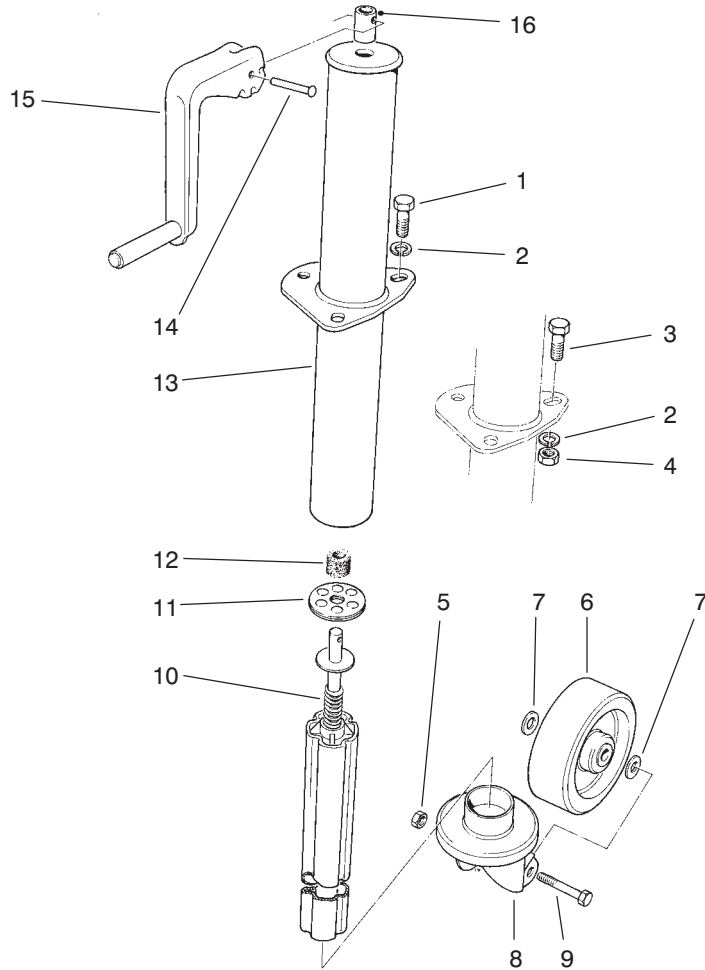
T-1982-1

FLEX TIP REEL & TRAILING ARM (Continued)

Ref. No.	Part No.	Description	No. Used
50	13-2870	Wheel - Gauge (Incl. Ref. #62)	2
51	13-5590	Rod - Adjustment	2
52	13-5670	Spacer - Locking	2
53	3217-9	Nut - Hex.	2
54	93-4415	Pulley - Idler	1
55	325-5	Screw - Hex. Hd.	1
56	63-5250	Spacer	1

Ref. No.	Part No.	Description	No. Used
57	3254-8	Washer - Lock, Int. Tooth	2
58	302-5	Fitting - Grease	2
59	256-298	Bushing	2
60	93-4429	Washer - Pulley	1
61	323-10	Screw - Hex. Hd.	1
62	93-7715	Ball Bearing	4
63	323-5	Screw - Hex. Hd.	3

*Not Illustrated



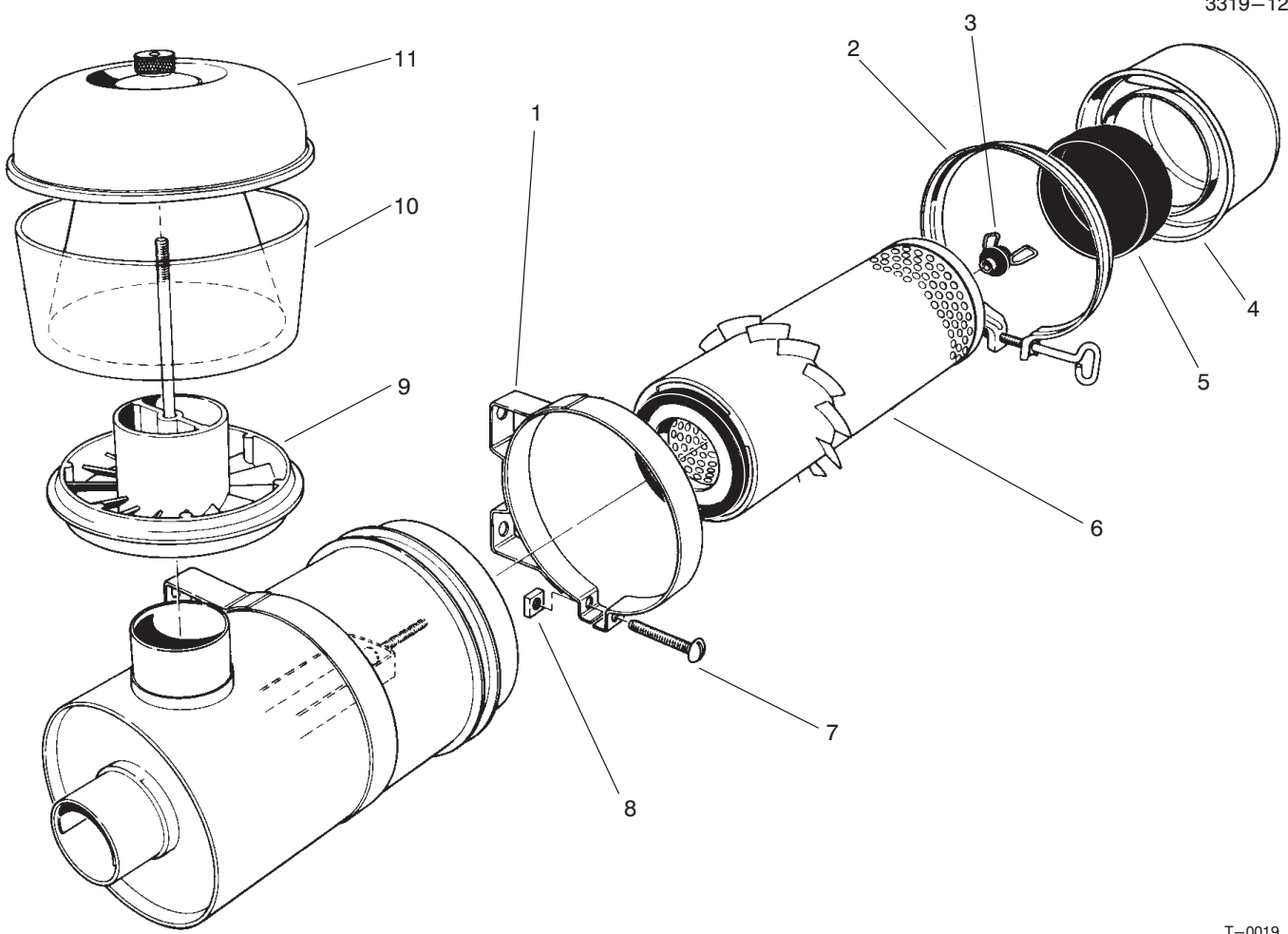
T-0015

JACK ASSEMBLY

Ref. No.	Part No.	Description	No. Used
1	323-4	Screw - Hex. Hd. (Model 07050 only)	3
2	3253-21	Washer - Lock	3
3	323-5	Screw - Hex. Hd. (Model 07052 only)	3
4	3217-7	Nut - hex. (Model 07052 only)	3
5	3296-23	Nut - Lock	1
6	13-6460	Wheel	1
7	3256-26	Washer - Flat	2
8	13-6450	Bracket - Wheel, Caster	1

Ref. No.	Part No.	Description	No. Used
9	325-13	Screw - Hex. Hd.	1
10	13-6750	Ram	1
11	13-3510	Bearing - Thrust	1
12	13-3610	Sleeve - Felt	1
13	13-5680	Asm-Jack (Incl. Ref. #10-16)	1
14	13-6730	Rivet	1
15	13-6740	Handle	1
16	13-3490	Sleeve	1
*	13-6440	Asm-Wheel (Incl. Ref. #5-9)	1

*Not Illustrated



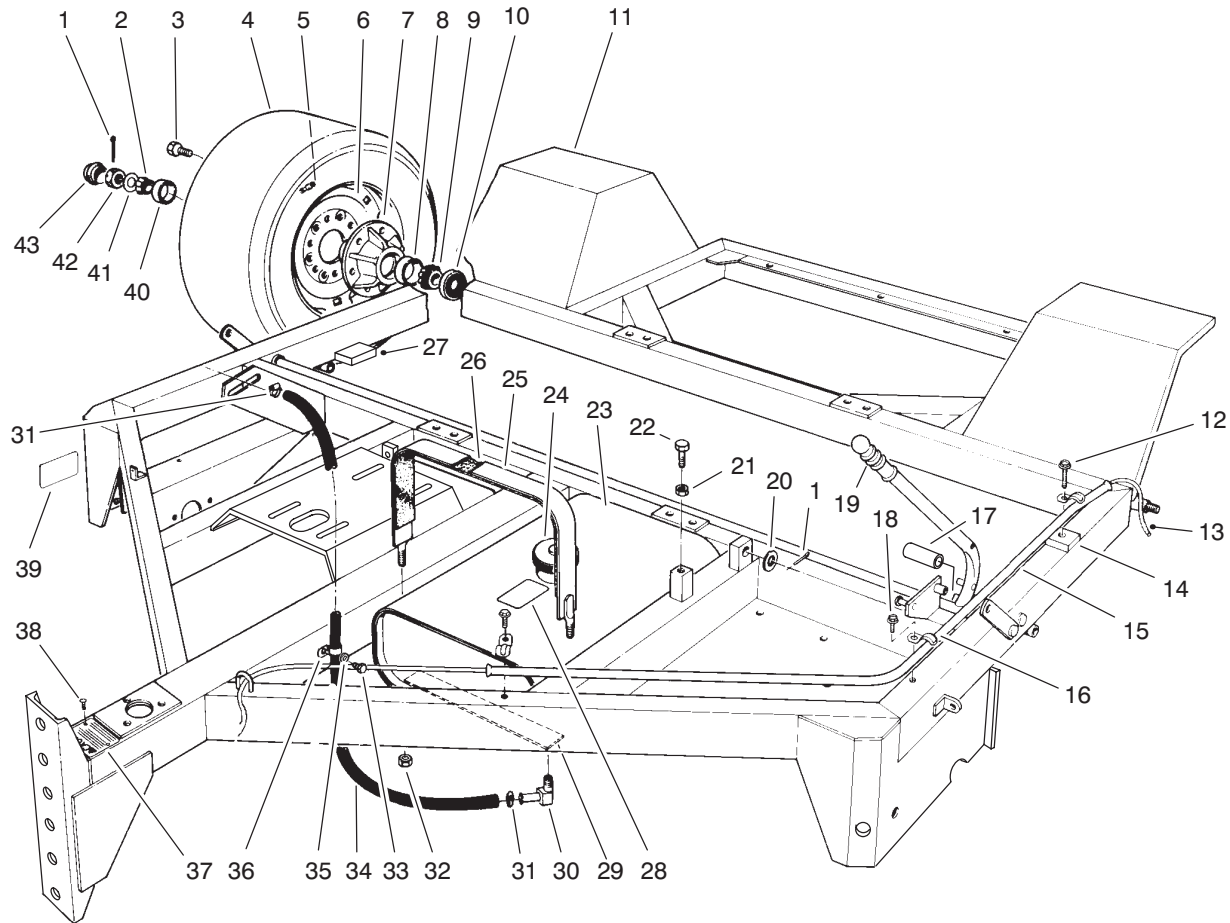
T-0019

AIR CLEANER ASSEMBLY NO. 8-2329

Ref. No.	Part No.	Description	No. Used
1	33-1350	Asm-Band, Mounting	2
2	33-1340	Asm-Clamp	1
3	33-1330	Asm-Nut	1
4	33-1320	Asm-Cup	1
5	33-1310	Baffle	1
6	33-1300	Asm-Element	1
7	3258-19	Screw - Machine	2

Ref. No.	Part No.	Description	No. Used
8	32107-11	Nut - Square	2
9	33-1280	Asm-Sleeve	1
10	33-1270	Bowl - Clear	1
11	33-1260	Asm-Cover	1
*	27-7220	Detergent - Cleaning, Air Filter Element (4 lb. box)	A/R

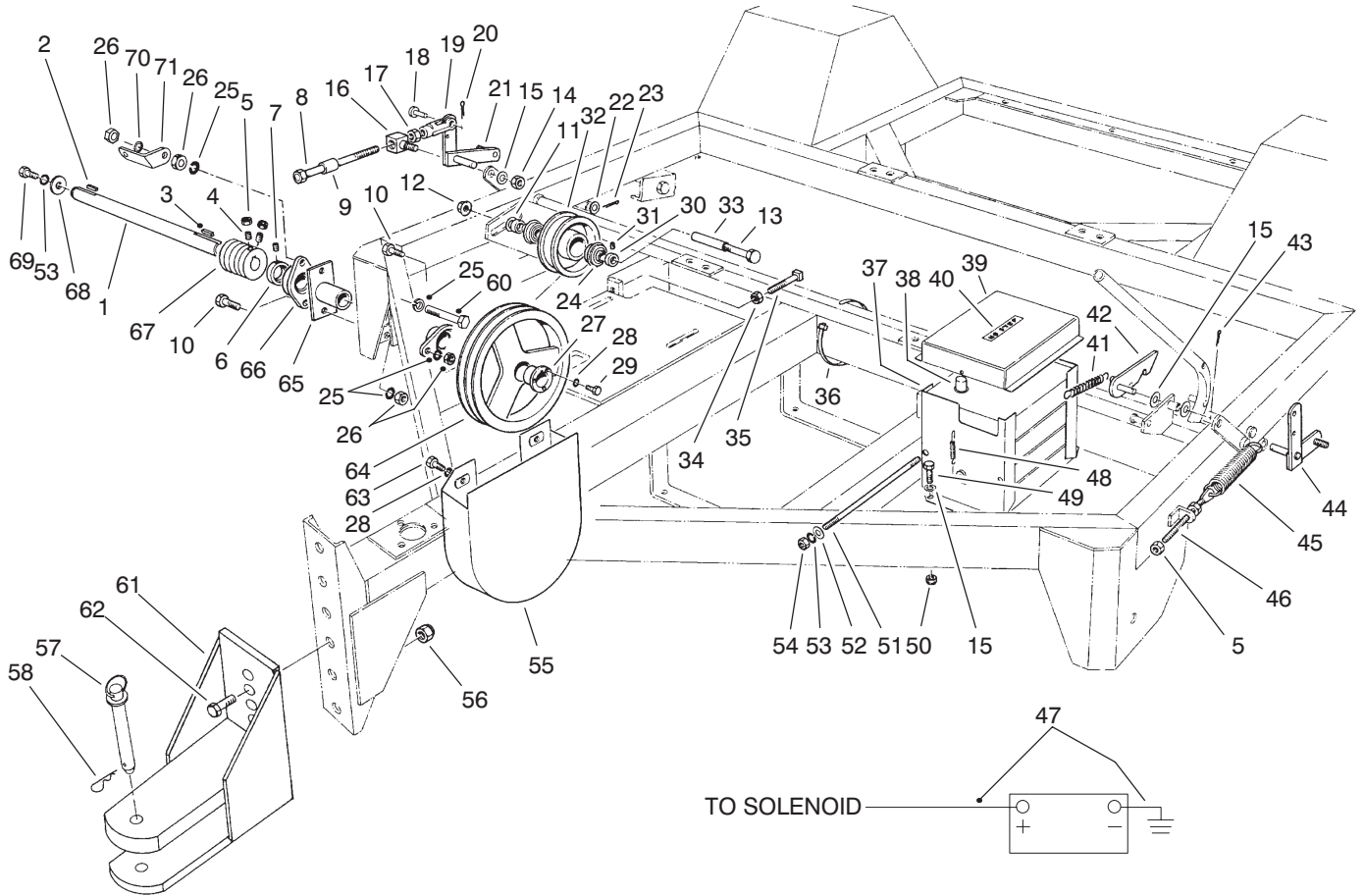
*Not Illustrated



T-0006

FRAME ASSEMBLY (Model No. 07050)

Ref. No.	Part No.	Description	No. Used	Ref. No.	Part No.	Description	No. Used
1	3272-17	Pin - Cotter	3	23	13-3930	Tank - Gas	1
2	254-62	Cone - Bearing	2	24	222-8	Cap - Gas	1
3	217-103	Bolt - Wheel	12	25	13-3960	Asm-Strap (Incl. Ref. #26)	2
4	93-0181	Tire	2	26	13-3970	Felt Strip	2
5	232-27	Stem - Valve	2	27	93-7709	Pad	1
6	93-0182	Asm-Wheel	2	28	53-4420	Decal - Gas	1
7	242-54	Hub (Incl. Ref. #8 & 40)	2	29	13-3970	Strip - Felt	2
8	254-66	Cup - Bearing	2	30	304-75	Fitting - Tube	1
9	254-65	Cone - Bearing	2	31	2412-108	Clamp - Hose	2
10	253-127	Seal	2	32	32153-3	Nut - Lock	4
11	93-4009	Main Frame	1	33	32104-109	Screw	1
12	32104-96	Screw - Self Tapping	1	34	94-4522	Hose - Fuel Line	1
13	20-9580	Rope	1	35	3256-22	Washer - Flat	1
14	13-6910	Spacer - Guide, Rope	1	36	2412-93	Clamp	1
15	13-6890	Guide - Rope	1	37	13-7460	Plate - Caution, Hitch	1
16	2412-40	Clamp - Conduit	3	38	3290-55	Rivet - Pop	4
17	3-3107	Hose	1	39	67-5360	Decal	1
18	32104-95	Screw - Self Tapping	2	40	254-61	Cup - Bearing	2
19	235-15	Grip - Handle	1	41	3256-29	Washer - Flat	2
20	3256-28	Washer - Flat	1	42	32136-1	Nut - Slotted	2
21	3218-3	Nut - Jam	1	43	242-55	Cap - Hub	2
22	323-8	Screw - Hex. Hd.	1				

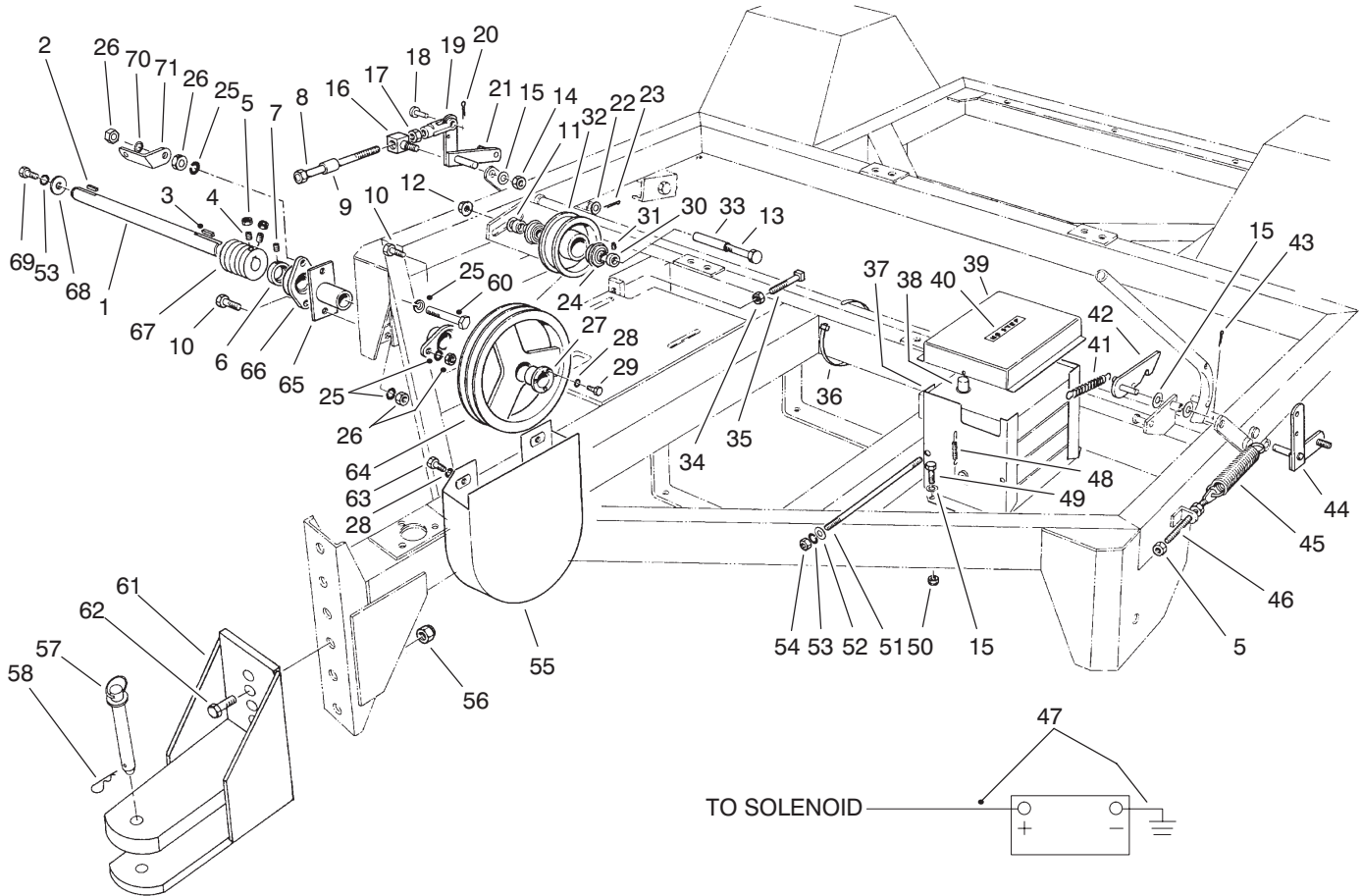


T-0010

JACKSHAFT & LIFTING MECHANISM (Model No. 07050)

Ref. No.	Part No.	Description	No. Used
1	93-4032	Shaft - Jack	1
2	68-3220	Key - Square	1
3	13-6330	Key - Square	1
4	3243-6	Screw - Set	2
5	3218-3	Nut - Jam	6
6		Collar - Locking	2
7		Screw - Set	2
8	13-6260	Screw - Adjustment	2
9	13-5520	Spacer	2
10	324-7	Screw - Hex. Hd.	3
11	3256-26	Washer - Flat	1
12	32128-49	Nut - Flange, Lock	1
13	325-20	Screw - Hex. Hd.	1
14	32153-2	Nut - Lock	2
15	3256-24	Washer - Flat	7
16	13-0100	Block - Pivot	2
17	3219-3	Nut - Hex	2
18	283-2	Pin - Clevis	2
19	282-22	Clevis	2
20	3272-10	Pin - Cotter	2
21	93-4440	Bell Crank - Lift, R.H.	1
22	3256-28	Washer - Flat	2
23	3272-22	Pin - Cotter	2
24	56-6210	Bearing (Incl. Ref. #30 & 31)	2
25	3253-6	Washer - Lock	5

Ref. No.	Part No.	Description	No. Used
26	3217-8	Nut - Lock	5
27	13-2680	Bushing (Incl. Ref. #28 & 29)	1
28	3253-4	Washer - Lock	5
29	322-7	Screw - Hex. Hd.	3
30		Collar - Locking	2
31		Screw - Set	2
32	13-0600	Pulley - Idler (Incl. Ref. #24)	1
33	93-7706	Tube - Spacer	1
34	3218-5	Nut - Hex.	2
35	3244-21	Screw - Set	2
36	250-5	Strap - Locking	2
37	3-5967	Support - Battery	2
38	55-7290	Battery	1
39	3-3175	Cover - Battery	1
40	61-5950	Decal	1
41	13-0480	Spring	1
42	13-3990	Handle - Trip	1
43	3272-10	Pin - Cotter	1
44	13-5500	Bell Crank - Lift, L.H.	1
45	13-0050	Spring	2
46	13-5530	Rod - Adjustment, Spring	2
47	13-6790	Cable - Battery	2
48	3-8135	Spring	2
49	323-5	Screw - Hex. Hd.	4

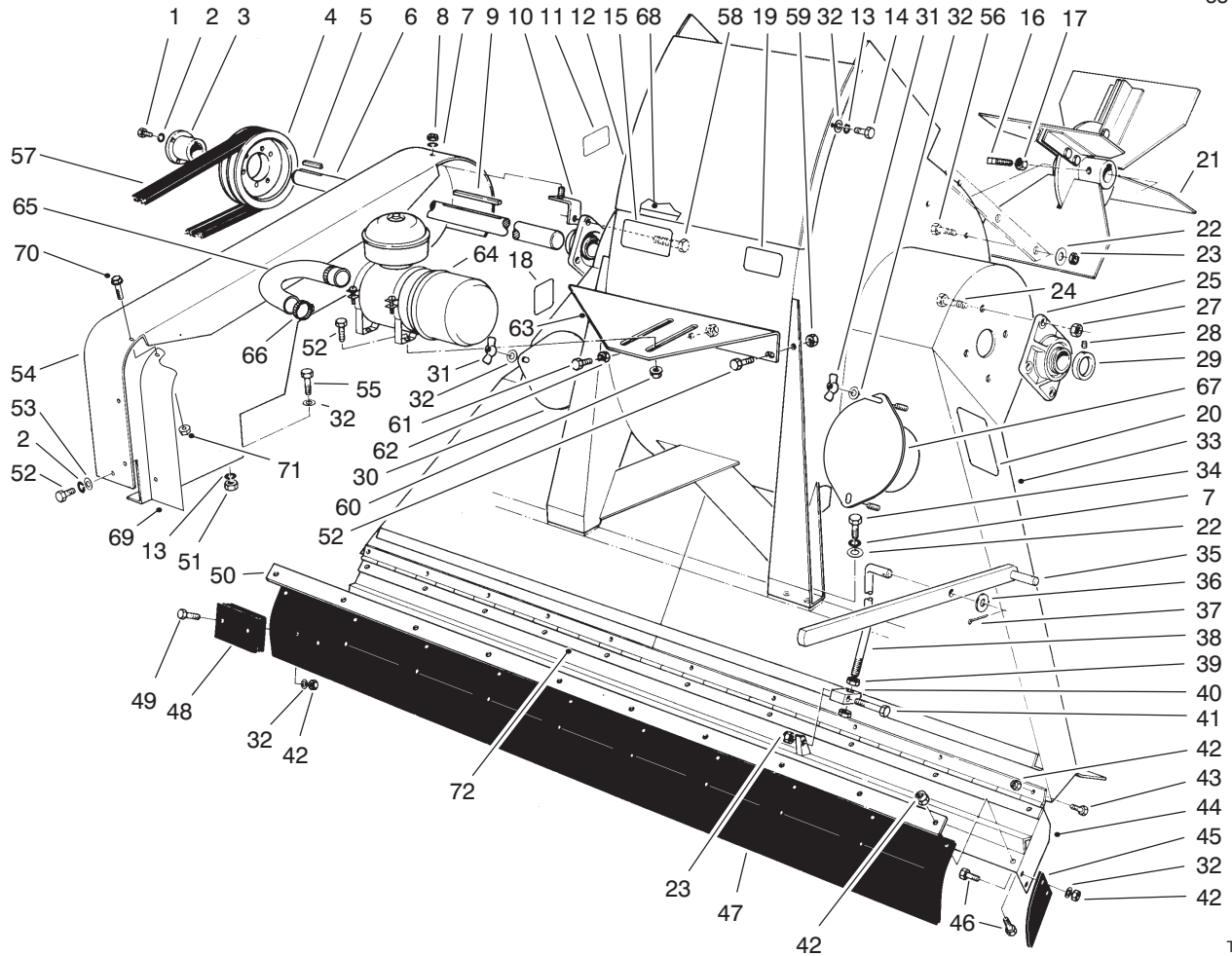


T-0010

JACKSHAFT & LIFTING MECHANISM (Model No. 07050) (Continued)

Ref. No.	Part No.	Description	No. Used
50	3296-39	Nut - Lock	4
51	5-0678	Rod - Clamp, Battery	2
52	3256-22	Washer - Flat	4
53	3253-3	Washer - Lock	5
54	3217-5	Nut - Hex.	4
55	13-4490	Guard - Sheave	1
56	3296-53	Nut - Lock	2
57	13-6200	Pin - Hitch (Incl. Ref. #58)	1
58	3290-343	Pin - Hair Cotter	1
60	324-10	Screw - Hex. Hd.	1
61	93-4409	Tongue	1

Ref. No.	Part No.	Description	No. Used
62	327-6	Screw - Hex. Hd.	2
63	322-7	Screw - Hex. Hd.	2
64	13-2670	Sheave	1
65	63-5210	Spindle - Driveside	1
66	56-6230	Bearing (Incl. Ref. #6 & 7)	2
67	93-4033	Pulley - Driver	1
68	13-3710	Washer	1
69	321-4	Screw - Hex. Hd.	1
70	3290-211	Washer - Spring	1
71	93-4438	Bracket - Belt Guard	1

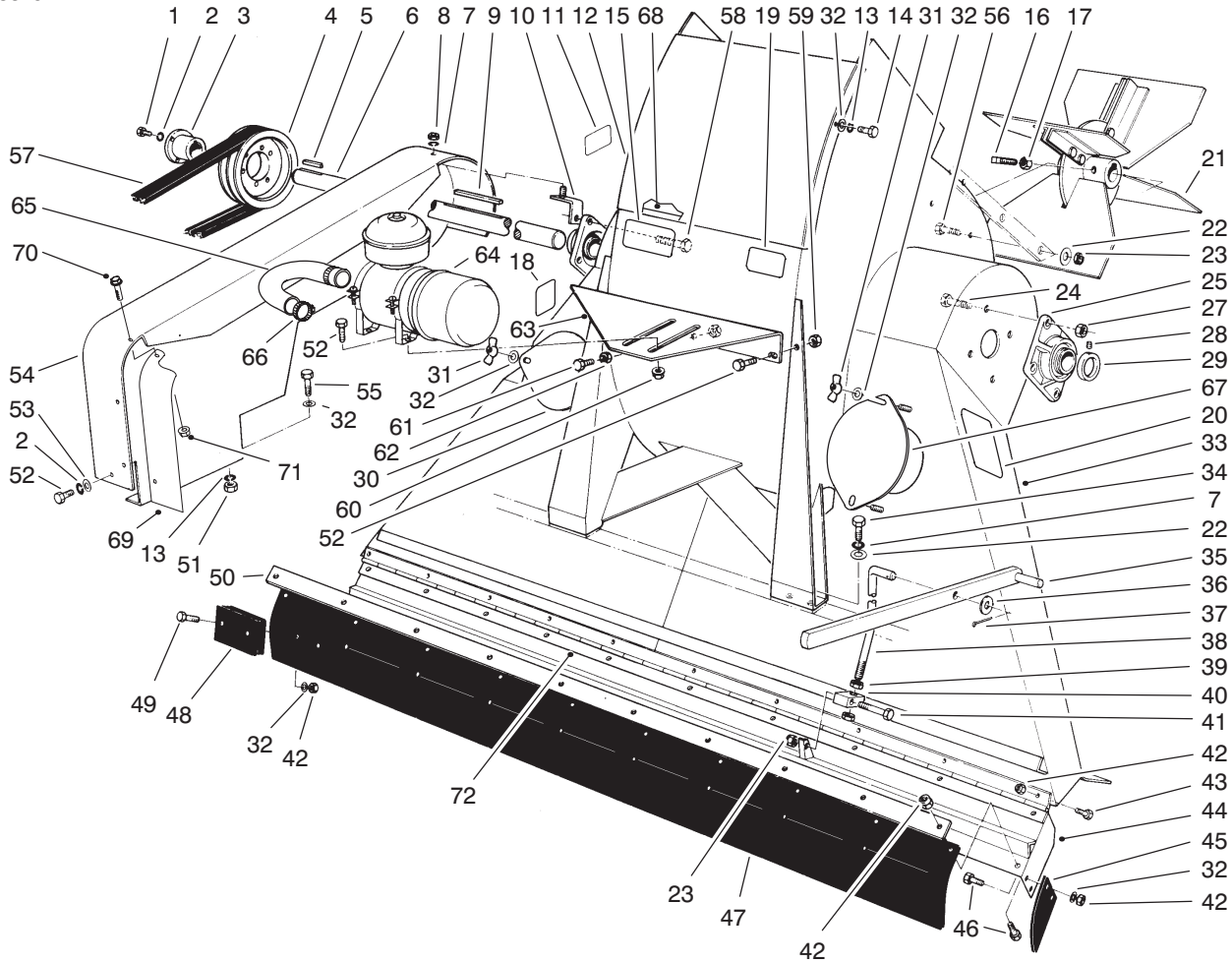


T-0005-3

BLOWER & THROAT ASSEMBLY (Model No. 07050)

Ref. No.	Part No.	Description	No. Used
1	322-7	Screw - Hex. Hd.	3
2	3253-4	Washer - Lock	4
3	13-2970	Bushing (Incl. Ref. #1 & 2)	1
4	13-2800	Pulley	1
5	13-2240	Key - Square	1
6	13-3790	Shaft - Fan	1
7	3253-21	Washer - Lock	9
8	3217-7	Nut - Hex.	1
9	13-2810	Key - Square	1
10	13-3350	Mounting Bracket	1
11	67-5360	Decal	1
12	13-3850	Plate - Blower Access	1
13	3253-3	Washer - Lock	6
14	321-4	Screw - Hex. Hd.	4
15	13-6410	Decal	1
16	3244-14	Screw - Set, Sq. Hd.	4
17	3218-5	Nut - Jam	4
18	92-8309	Decal - Warning	1
19	93-7307	Decal - Warning	1
20	93-4041	Decal - Op. Instructions	1
21	13-3420	Asm-Fan	1
22	3256-24	Washer - Flat	14
23	3296-39	Nut - Lock	7
24	325-6	Screw - Hex. Hd.	7
25	56-6220	Bearing (Incl. Ref. #28 & 29)	2

Ref. No.	Part No.	Description	No. Used
27	32153-5	Nut - Lock	8
28		Screw - Set	2
29		Collar - Locking	2
30	13-1420	Cover - Inspection	1
31	32103-12	Nut - Wing	4
32	3256-22	Washer - Flat	32
33	13-6280	Blower (Incl. Ref. #11-15, 18-20, 30-32, & 67-68)	1
34	323-6	Screw - Hex. Hd.	8
35	13-6390	Handle - Flap	1
36	3256-27	Washer - Flat	1
37	3272-12	Pin - Cotter	1
38	13-6360	Rod - Lift	1
39	3218-6	Nut - Jam	2
40	13-0330	Block - Pivot	1
41	323-9	Screw - Hex. Hd.	1
42	3296-42	Nut - Lock	52
43	321-3	Screw - Hex. Hd.	20
44	95-3112	Flap - Lower	1
45	13-3130	Flap - End	2
46	321-5	Screw - Hex. Hd.	14
47	13-4700	Flap (Incl. Ref. #23, 42, 48-49)	1
48	13-4560	Weight - Flap	18
49	321-8	Screw - Hex. Hd.	18
50	13-1390	Retainer - Flap	1

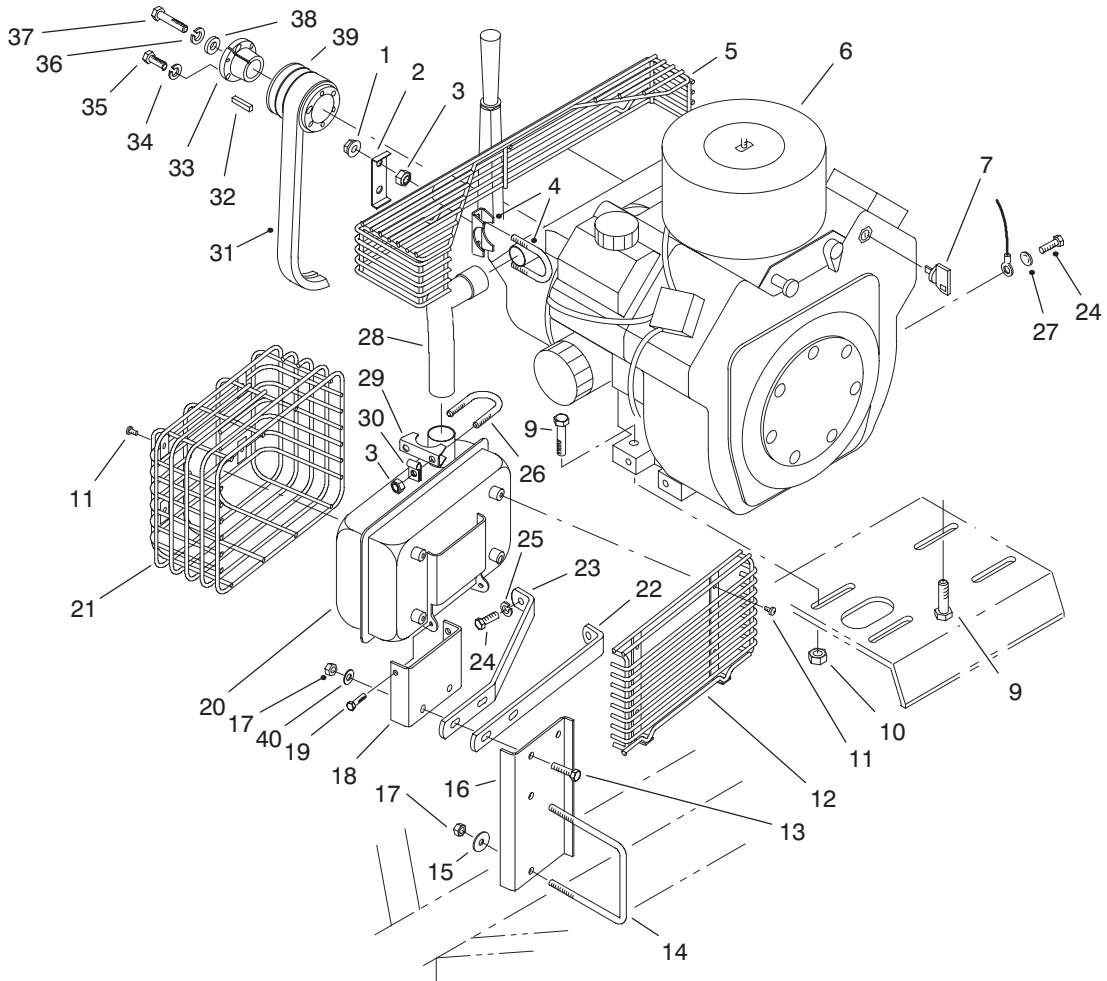


T-0005-3

BLOWER & THROAT ASSEMBLY (Model No. 07050) (Continued)

Ref. No.	Part No.	Description	No. Used
51	3217-5	Nut - Hex	2
52	322-1	Screw - Hex. Hd.	1
53	3256-23	Washer - Flat	1
54	13-4800	Guard - Belt	1
55	321-4	Screw - Hex. Hd.	2
56	323-7	Screw - Hex. Hd.	6
57	93-0183	Belt	1
58	325-7	Screw - Hex. Hd.	1
59	32153-3	Nut - Lock	2
60	32128-25	Nut - Lock, Flange	4
61	322-5	Screw - Hex. Hd.	1

Ref. No.	Part No.	Description	No. Used
62	3218-2	Nut - Jam	2
63	67-9730	Bracket - Air Cleaner	1
64	8-2329	Asm-Air Cleaner	1
65	93-7701	Hose - Air Cleaner	1
66	2412-42	Clamp	2
67	93-4020	Cover - Inspection	1
68	93-7708	Strip - Sealing	1
69	93-7707	Shield - Belt Guard	1
70	3234-33	Screw - Hex. Hd.	2
71	32128-32	Nut - Lock, Flange	2
72	95-3114	Hinge - Continuous	1



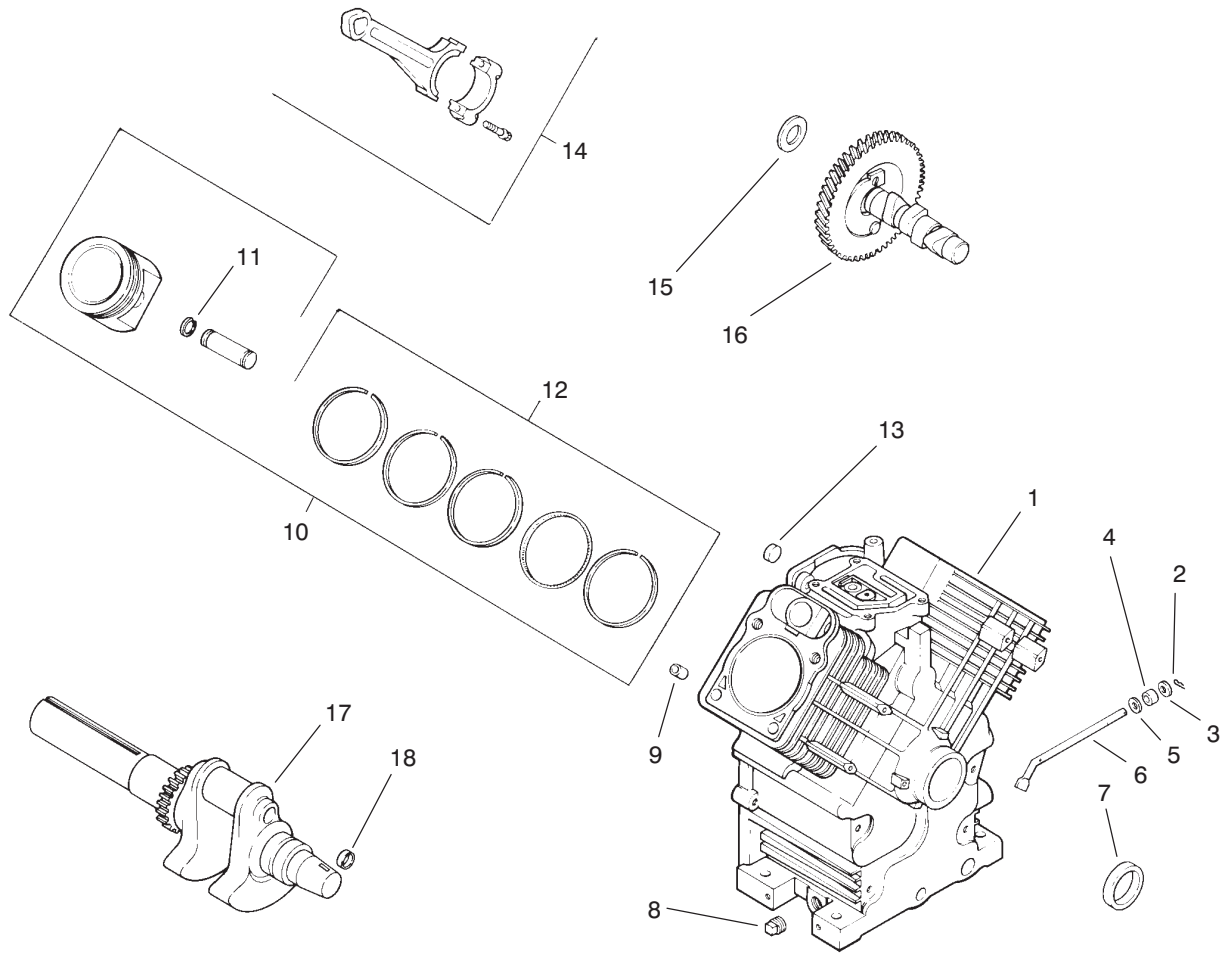
T-2006-1

ENGINE ASSEMBLY

Ref. No.	Part No.	Description	No. Used	Ref. No.	Part No.	Description	No. Used
1	32128-20	Nut - Lock, Flange	4	23	93-0199	Strap - Muffler Support	1
2	93-7703	Plate - Clamp Guard	2	24	48-7700	Screw - Cap Hex. Hd.	3
3	32153-3	Nut - Lock	4	25	3253-4	Washer - Lock	2
4	94-1756	Asm-Muffler Clamp	2	26	2112-11	Clamp - Muffler (Incl. Ref. #29)	1
5	93-4418	Guard - Manifold, Exhaust	1	27	3254-2	Washer - Lock ITLW	1
‡6		Engine Kohler CH22CS Spec 66525	1	‡28	24 382 04	Pipe - Exhaust	1
7	63-8360	Key	2	29		Clamp - Muffler	1
9	323-9	Screw - Hex. Hd.	4	30	2412-103	R-Clamp	1
10	32128-29	Nut - Lock, Flange	4	31	13-2650	V-Belt	1
11	47-2830	Screw - Machine	8	32	3-9155	Key - Square	1
12	93-4419	Guard - Muffler, Rear	1	33	13-3330	Bushing (Incl. Ref. #37 & 38)	1
13	322-6	Screw - Hex. Hd.	2	34	3253-3	Washer - Lock	3
14	93-4417	U-Bolt	1	35	321-6	Screw - Hex. Hd.	3
15	3256-82	Washer - Flat	2	36	3253-21	Washer - Lock	1
16	93-4416	Bracket - Support, Muffler	1	37	323-10	Screw - Hex. Hd.	1
17	3296-47	Nut - Lock	4	38	4-1920	Washer	1
18	93-0198	Bracket - Support, Muffler	1	39	13-3320	Pulley	1
19	46-6810	Screw	2	40	3256-23	Washer - Flat	2
‡20	24 068 14	Muffler	1	*‡	12 189 02	Spark Arrestor (Optional)	1
‡21	24 314 03	Guard - Muffler	1				
22	93-4000	Strap - Muffler Support	1				

*Not Illustrated

‡Obtain these items directly from Kohler Co., Kohler, WI 53044 1-800-544-2444



T-1984

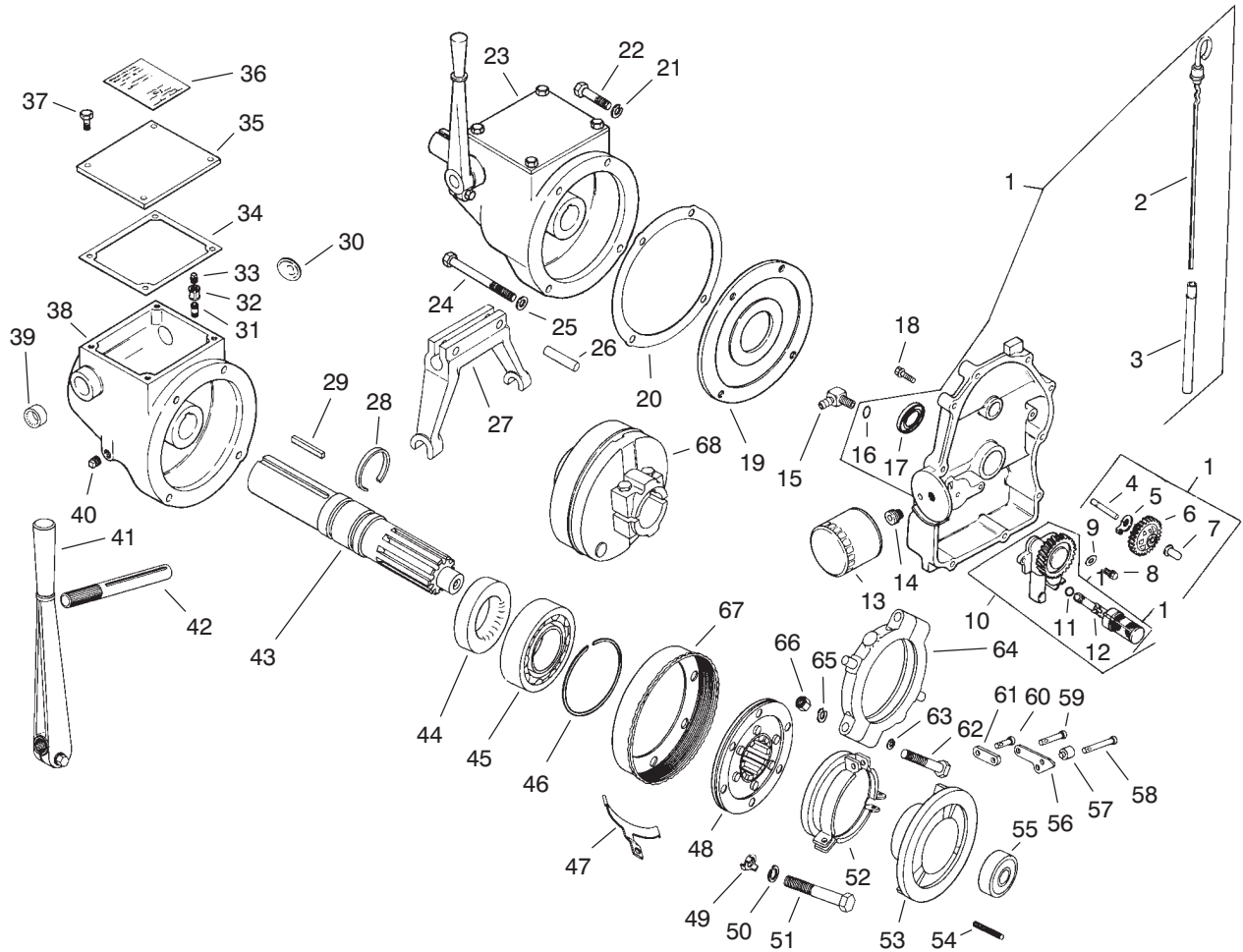
CRANKSHAFT & CRANKCASE

Ref. No.	Part No.	Description	No. Used
1	24 782 01	Cylinder Block	1
2	12 380 04	Pin - Hitch	1
3	X-25-102	Washer - Plain	1
4	12 032 01	Seal - Governor Cross Shaft	1
5	X-25-63	Washer - Plain	1
6	24 144 01	Shaft - Governor Cross	1
7	24 032 01	Seal - Oil Front	1
8	X-75-10	Plug - Sq. Hd. Solid	2
9	12 380 03	Pin - Dowel Locating	6
10	24 874 01	Piston w/Ring Set (Std.) (Incl. Ref. #11-12)	2
*	24 874 02	Piston w/Ring Set (.25)	2
*	24 874 03	Piston w/Ring Set (.50)	2
11	24 018 01	Retainer - Piston pin	4

Ref. No.	Part No.	Description	No. Used
12	24 108 01	Ring Set (Std.)	2
*	24 108 02	Ring Set (.25)	2
*	24 108 03	Ring Set (.50)	2
13	52 139 09	Plug - Cup	1
14	24 067 05	Connecting Rod (Std.)	2
*	24 067 06	Connecting Rod (.25)	2
15	12 422 09	Shim - Camshaft, Green	A/R
*	12 422 13	Shim - Camshaft, Black	A/R
*	12 422 07	Shim - Camshaft, White	A/R
*	12 422 08	Shim - Camshaft, Blue	A/R
*	12 422 10	Shim - Camshaft, Yellow	A/R
*	12 422 11	Shim - Camshaft, Red	A/R
*	12 422 12	Shim - Camshaft, Gray	A/R
16	24 012 05	Camshaft	1
17	24 014 78	Crankshaft	1
18	52 139 09	Plug - Cup	1

*Not Illustrated

Note: Obtain these items directly from Kohler Co., Kohler, WI 53044 1-800-544-2444

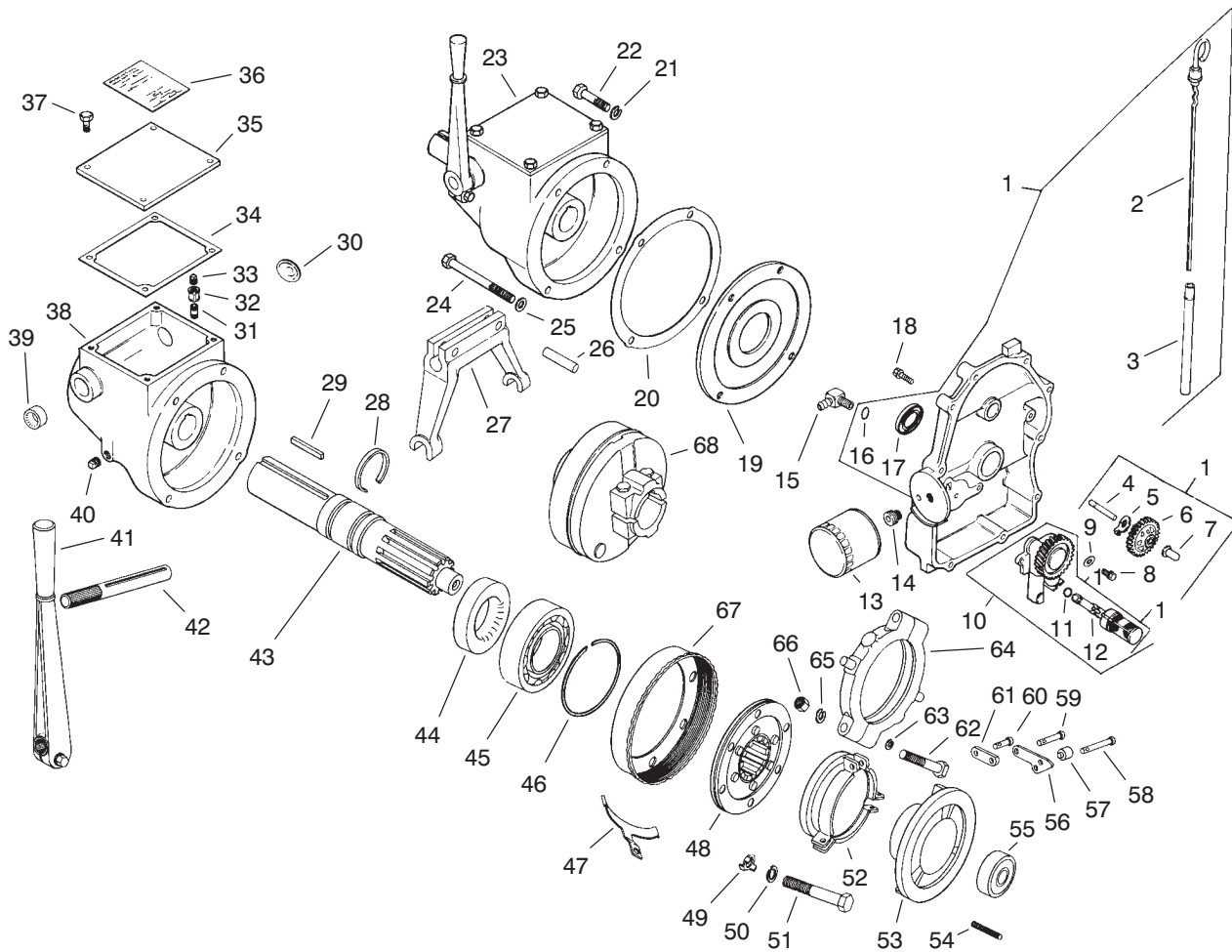


T-1985

OIL PAN & LUBRICATION

Ref. No.	Part No.	Description	No. Used	Ref. No.	Part No.	Description	No. Used
1	24 009 90	Plate – Closure (Incl. Ref. #2-7, 10-12, 16-17)	1	23	24 239 02	Asm-Clutch (Incl. Ref. #29-31, 33-61)	1
2	24 038 05	Dipstick	1	24	24 086 29	Screw – Hex. Hd.	2
3	24 123 08	Tube – Dipstick	1	25	X-25-34	Washer – Plain	4
4	12 144 02	Shaft – Governor Gear	1	26	274101	Pin – Roll	2
5	52 448 02	Tab – Locking	1	27	A-234027	Yoke – Clutch	1
6	24 043 12	Kit-Governor Gear w/pin (Incl. Ref. #7)	1	28	234037	Ring – Retaining	2
7	12 380 01	Pin – Governor Regulating	1	29	24 340 01	Key – Square	1
8	M0645025	Screw	2	30	X-230-20	Plug – Welch	1
9	SM0631005	Washer – Plain	2	31	47 136 02	Nipple – Pipe	1
10	24 393 03	Asm- Oil Pump (Incl. Ref. #11 & 12)	1	32	X-216-25	Coupling – Pipe	1
11	24 153 01	O-Ring, Oil Pick-up	1	33	270219	Plug – Vent	1
12	24 381 03	Pick-up, oil	1	34		Gasket – Clutch Cover	1
13	12 050 01	Filter – Oil	1	35		Cover – Clutch	1
14	24 136 01	Nipple – Oil Filter	1	36		Plate – Instruction	1
15	25 155 02	Connector – 90° Hose	1	37		Screw	4
16	24 153 08	O-Ring	1	38		Housing – Clutch	1
17	52 032 08	Seal – Oil (PTO End)	1	39	X-271-19	Seal – Oil	1
18	24 086 16	Screw – Closure Plate	10	40	X-75-2	Plug – Pipe Sq. Hd.	2
19	24 146 10	Plate – Adapter	1	41	A-234026	Lever – Shifting	1
20	24 041 25	Asm-Gasket, Clutch	1	42		Shaft – Yoke	1
21	X-23-1	Washer – Lock	4	43	234039	Shaft – Drive	1
22	24 086 28	Screw – Hex. Hd.	2	44	234038	Seal – Oil	1
				45	234035	Bearing – Ball	1
				46	48 141 02	Ring – Snap	1
				47	234038	Lock – Adjusting	1

Note: Obtain these items directly from Kohler Co., Kohler, WI 53044 1-800-544-2444



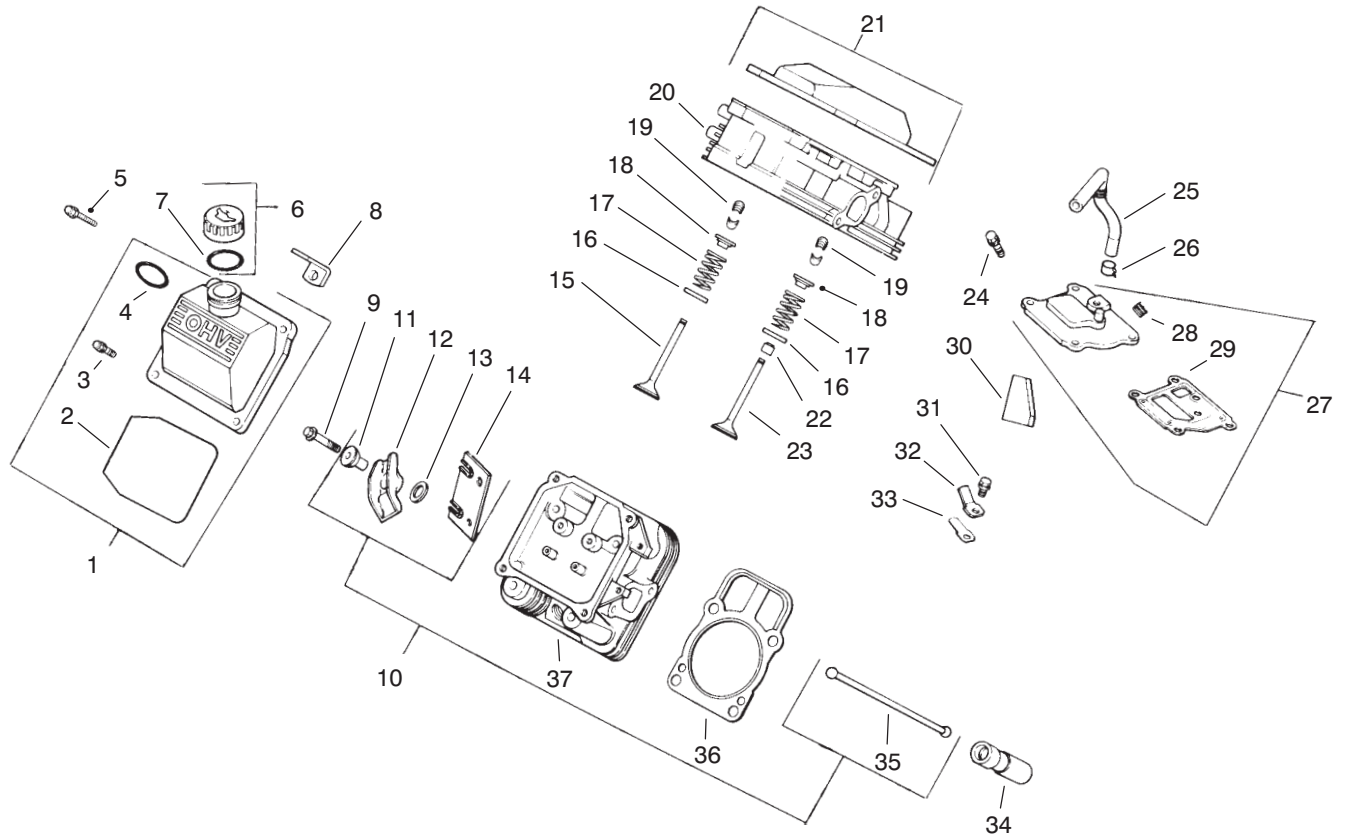
T-1985

OIL PAN & LUBRICATION (Continued)

Ref. No.	Part No.	Description	No. Used
48	A-234044	Member – Drive	1
49	234057	Lock – Screw	2
50	X-22-1	Washer – Lock	3
51	X-7-2	Screw – Hex. Hd.	1
52	234054	Sleeve, – Release	1
53	A-234045	Plate – Pressure	1
54	234055	Spring – Return	3
55	234042	Bearing – Ball	1
56	234046	Lever – Pressure Plate	6
57	234048	Roller – Pressure Plate	3
58	234047	Pin – Lever	3

Ref. No.	Part No.	Description	No. Used
59	234051	Pin – Link (Long)	3
60	234052	Pin – Link (Short)	3
61	234050	Link – Connecting	6
62	X-52-22	Screw	1
63	X-22-11	Washer – Lock	1
64	A-234053	Bearing – Release	1
65	X-21-1	Washer – Lock	1
66	X-83-4	Nut – Hex.	1
67	234056	Ring – Adjusting	1
68		Asm-Clutch	1

Note: Obtain these items directly from Kohler Co., Kohler, WI 53044 1-800-544-2444



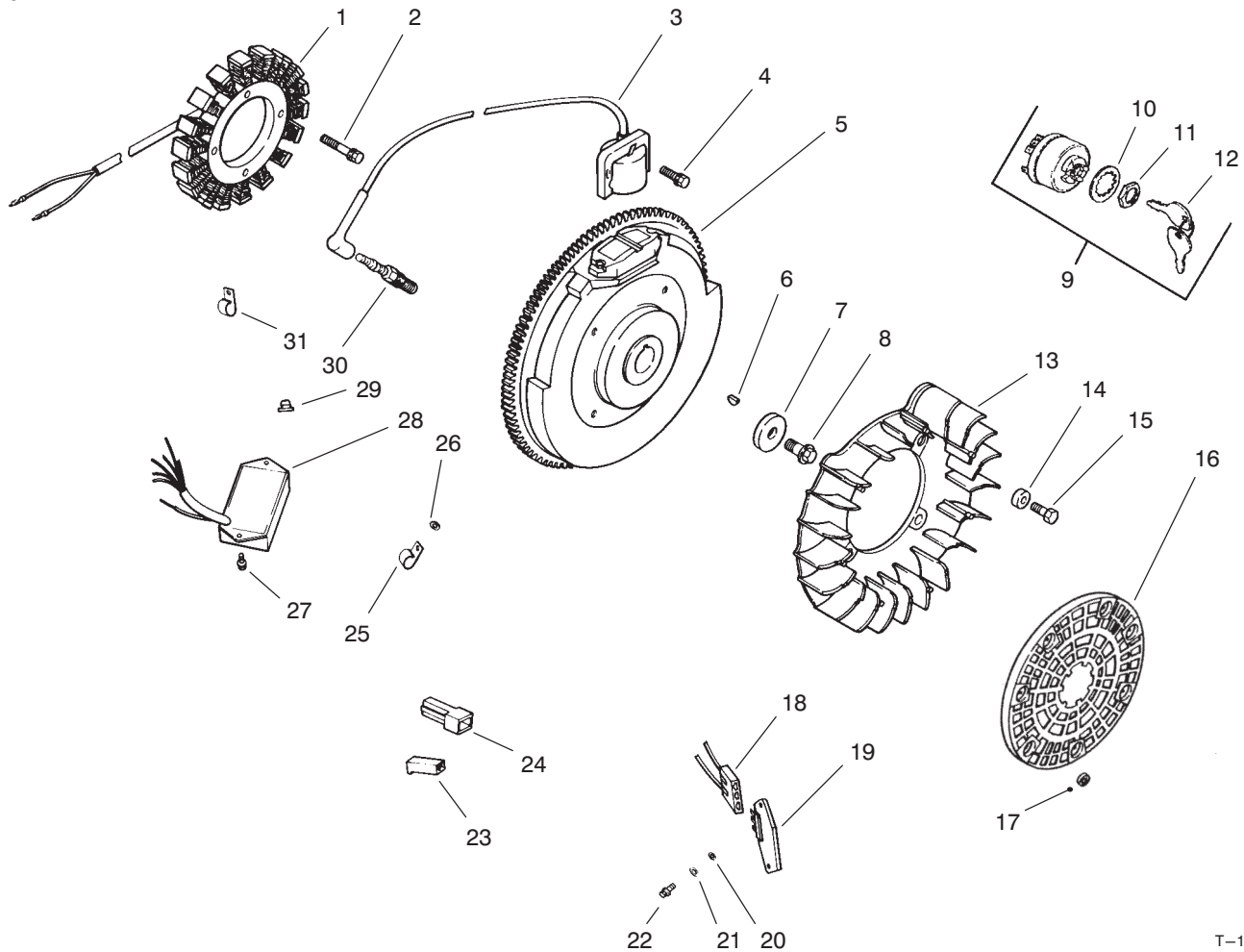
T-1986

CYLINDER HEAD, VALVE, & BREATHER

Ref. No.	Part No.	Description	No. Used	Ref. No.	Part No.	Description	No. Used
1	24 755 75	Kit – Valve Cover, Oil Fill (Incl. Ref. #2-4)	1	19	12 755 03	Kit-Retainer	4
2	24 153 12	O-Ring	1	20	24 318 09	Asm-Head #1 cylinder	1
3	24 086 32	Screw – Shoulder	4	21	24 755 74	Kit-Valve Cover Plain (Incl. Ref. #2 & 3)	1
4	24 153 09	O-Ring	1	22	24 032 05	Seal, Valve Stem	2
5	12 086 16	Screw	8	23	24 017 01	Valve – Intake (Std.)	2
6	25 755 13	Kit-Oil Fill Cap (Incl. Ref. #7)	1	*	24 017 02	Valve – Intake (.25)	2
7	12 153 03	O-Ring, Cap Oil Fill	1	24	SM0645020	Screw	4
8	24 445 01	Strap – Lifting	1	25	24 326 06	Hose – Breather	1
9	M0640034	Screw	4	26	X-426-9	Clamp – Breather	1
10	24 755 61	Kit-Valve Train (Incl. Ref. #11-14, 35)	1	27	24 033 01	Kit-Breather w/plug (Incl. Ref. #28 & 29)	1
11	24 194 02	Pivot – Rocker Arm	4	28	X-75-23	Plug – Hex. Ctsk.	1
12	24 186 03	Arm – Rocker	4	29	24 041 23	Gasket – Breather	1
13	SM0631005	Washer – Plain	4	30	24 050 01	Filter – Breather	1
14	24 146 09	Plate – Guide	2	31	M0545010	Screw – Breather Reed Ret.	1
15	24 016 01	Valve – Exhaust (Std.)	2	32	12 018 01	Retainer – Breather Reed	1
*	24 016 02	Valve – Exhaust (.25)	2	33	24 402 03	Reed – Breather	1
16	235011	Retainer – Spring	1	34	12 351 01	Lifter – Valve	4
17	24 089 02	Spring – Valve	4	35	24 411 04	Rod – Push	4
18	12 173 01	Cap – Valve spring	4	36	24 041 08	Gasket – Cylinder head	2
				37	24 318 10	Asm-Head#2 Cylinder	1

*Not Illustrated

Note: Obtain these items directly from Kohler Co., Kohler, WI 53044 1-800-544-2444



T-1987

IGNITION & ELECTRICAL SYSTEM

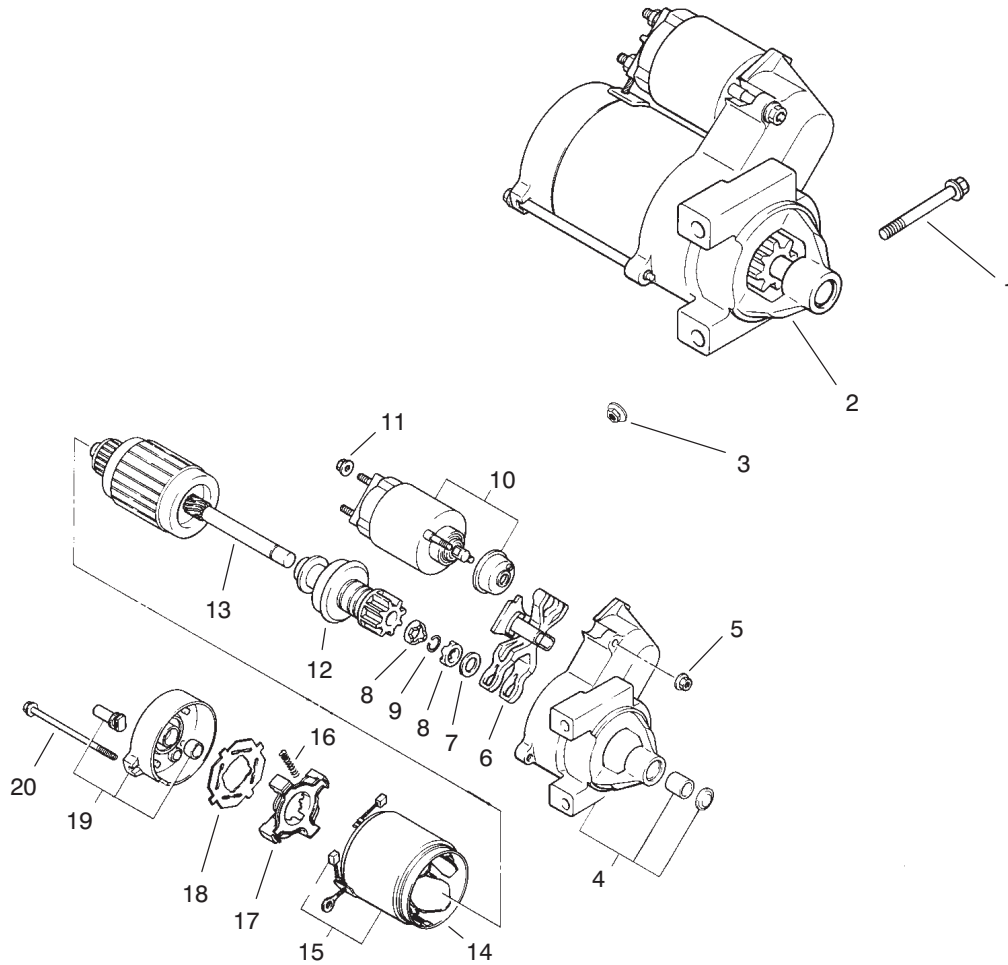
Ref. No.	Part No.	Description	No. Used
1	24 085 01	Stator – 15 amp	1
2	M0548025	Screw – Stator Mtg	2
3	24 584 03	Module – Ignition	2
4	M0560020	Screw – Ignition Module	4
5	24 025 02	Asm–Flywheel	1
6	X-42-15	Key	1
7	12 468 03	Washer – Flywheel Mtg	1
8	12 086 14	Screw – Flywheel Mtg.	1
9	25 099 04	Key – Switch (Incl. Ref. #10-12)	1
10	48 468 02	Washer	1
11	48 100 01	Nut – Key Switch	1
†12	63-8360	Key	2
13	24 157 01	Fan	1
14	12 112 01	Spacer – Fan	4
15	M0639016	Screw	4
16	24 162 03	Screen – Grass	1

Ref. No.	Part No.	Description	No. Used
17	24 018 03	Retainer	3
18	236602	Connector (3 contact)	1
19	25 403 03	Rectifier – Regulator 15 amp	1
20	X-25-92	Washer – Plain	2
21	X-25-63	Washer – Plain	1
22	24 086 18	Screw – Phillips	2
23	277563	Connector (1 contact)	2
24	15 155 01	Connector (1 contact)	1
25	47 154 01	Clip – Cable	1
26	X-25-63	Washer – Plain	1
27	M0461013	Screw – Phillips	2
28	24 584 05	Module – Speed Advance	1
29	24 100 02	Nut – Plastic	2
30	12 132 02	Spark Plug	2
31	48 154 02	Clip – Cable	1
*	24 176 30	Harness – Wiring	1
*	24 518 04	Lead – Green	1

*Not Illustrated

†Obtain from The Toro Company

Note: Obtain these items directly from Kohler Co., Kohler, WI 53044 1-800-544-2444



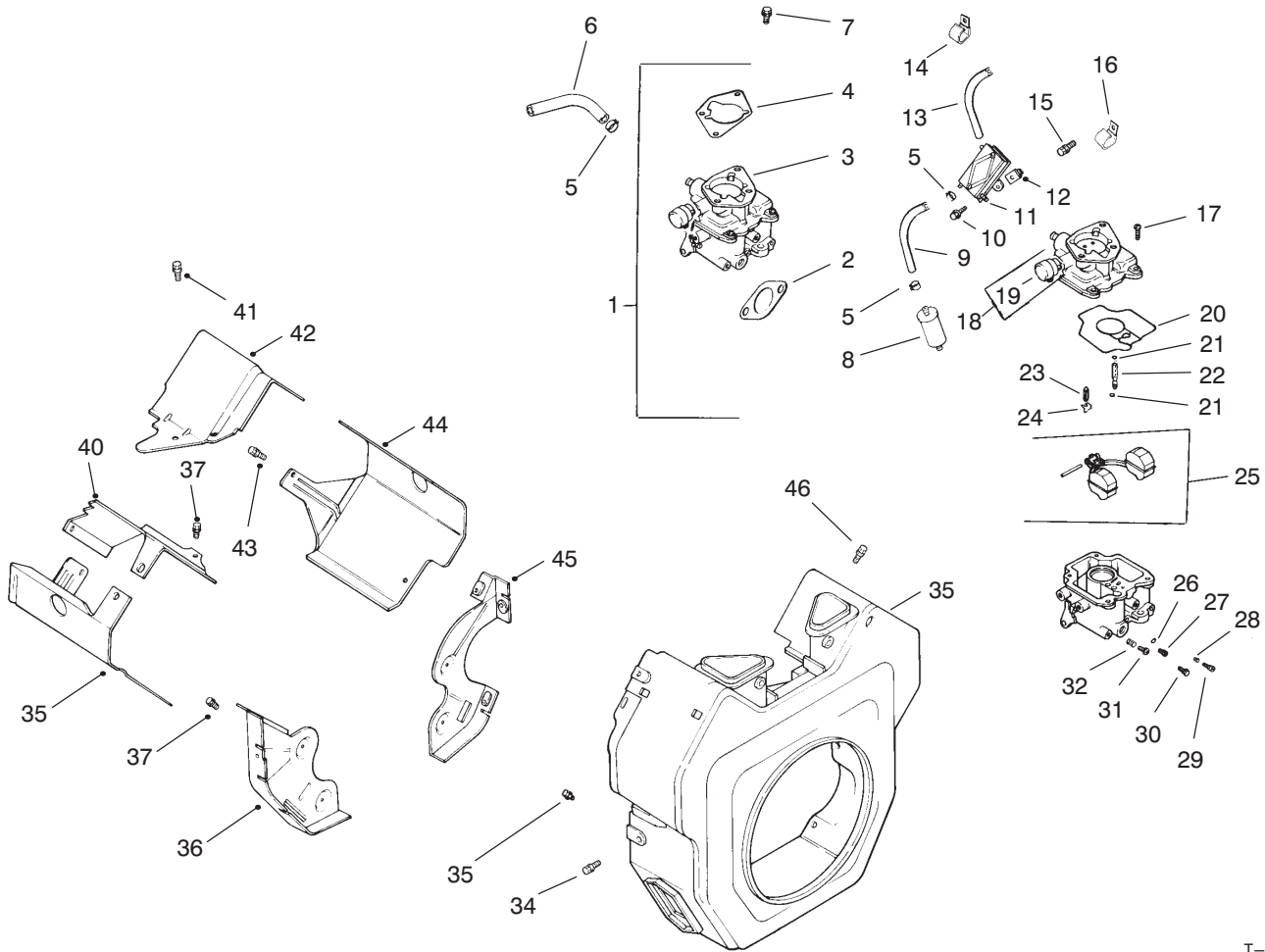
T-2182

STARTING SYSTEM

Ref. No.	Part No.	Description	No. Used
1	M0839080	Screw	2
2	24 098 01	Starter – Solenoid Shift (Incl. Ref. #4–20)	1
3	M0841080	Nut	2
4	24 081 04	Drive – End Cap	1
5	52 100 10	Nut – Starter	2
6	12 090 10	Lever – Starter Drive	1
7	52 468 14	Washer – Thrust	1
8	52 100 08	Nut – Stop Collar	2
9	52 141 03	Ring – Retainer	1
10	52 435 02	Solenoid	1

Ref. No.	Part No.	Description	No. Used
11	52 100 09	Nut – Starter	1
12	12 239 01	Drive – Pinion	1
13	12 170 03	Armature – Starter	1
14	12 471 01	Frame	1
15	52 221 01	Kit–Brush & Spring (Incl. Ref. #16)	1
16	52 089 09	Spring – Brush	4
17	52 323 03	Holder – Brush	1
18	52 168 01	Insulator	1
19	24 301 01	Commutator – End Cap	1
20	52 211 05	Bolt – Thru	2

Note: Obtain these items directly from Kohler Co., Kohler, WI 53044 1-800-544-2444



T-1988

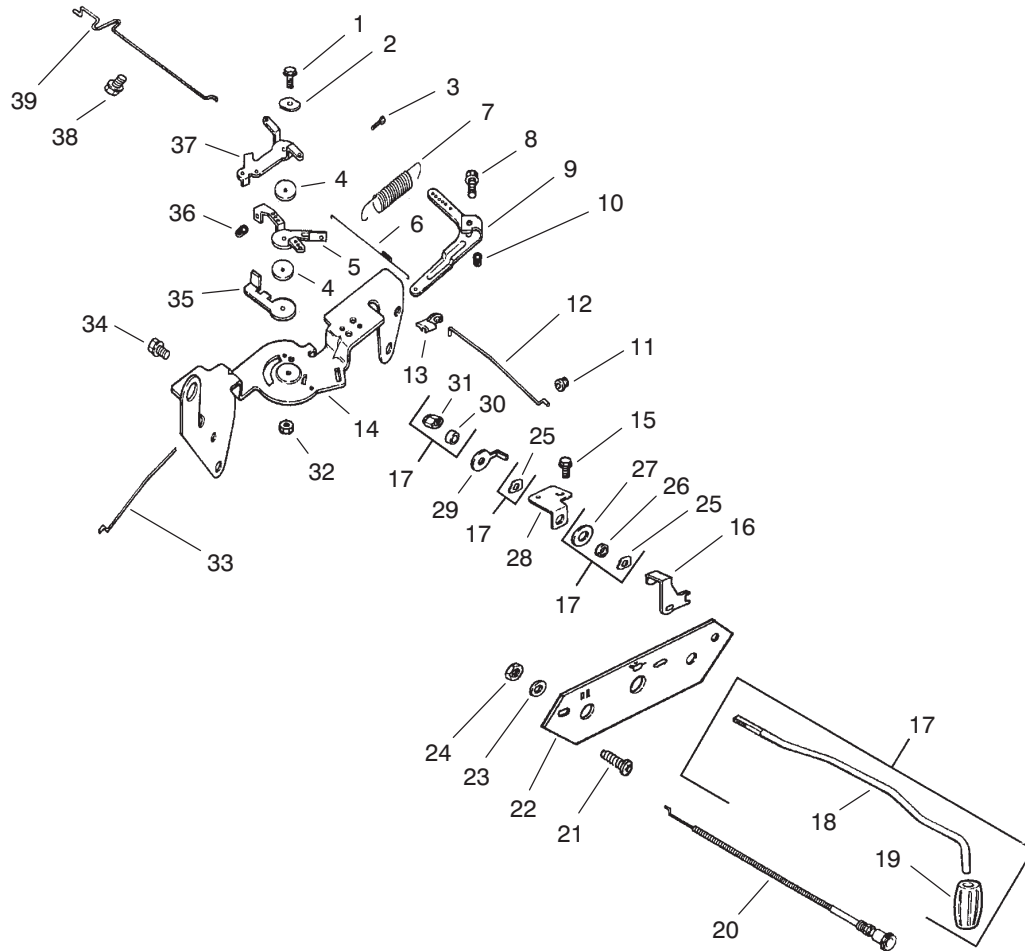
BLOWER HOUSING, BAFFLES, & FUEL SYSTEM

Ref. No.	Part No.	Description	No. Used
1	24 853 01	Kit-Carburetor w/gasket (Incl. Ref. #2-4)	1
2	24 041 17	Gasket - Carburetor	1
3	24 053 01	Asm-Carburetor (Incl. Ref. #17-32)	1
4	24 041 06	Gasket - Air Cleaner	1
5	X-426-9	Clamp - Hose	6
6	24 353 02	Line - Fuel	1
7	M0651030	Screw	2
8	25 050 03	Filter - Fuel	1
9	25 353 10	Line - Fuel	2
10	24 086 12	Screw - Hex. Hd.	2
11	24 393 04	Pump - Fuel, Pulse	1
12	24 100 01	Nut - Plastic	2
13	15 353 04	Line - Fuel	1
14	47 154 01	Clip - Cable	1
15	M0650012	Screw	1
16	47 154 01	Clip - Cable	1
17	24 086 09	Screw - Carburetor Body	4
18	24 757 07	Kit-Choke Repair (Incl. Ref. #19)	1
19	24 173 02	Cap - Choke Lever	1
20	24 041 09	Gasket - Carburetor Body	1
21	24 153 02	O-Ring, Slow Jet	2
22	24 337 01	Jet - Slow	1
23	24 462 01	Valve - Inlet Needle	1
24	24 154 01	Clip - Inlet Needle Valve	1
25	24 757 02	Kit - Float Repair	1

Ref. No.	Part No.	Description	No. Used
26	24 153 03	O-Ring, Main Jet	1
27	24 337 02	Jet - Main	1
28	24 089 11	Spring - Idle Adjust	1
29	24 368 01	Needle - Idle Adjust	1
30	24 086 11	Screw - Hex. Hd.	1
31	24 086 10	Screw - Idle speed Adjust	1
32	24 089 10	Spring - Idle Speed Adjust	1
*	24 041 17	Gasket - Carburetor	1
*	24 757 03	Kit-Carburetor Repair	1
*	24 755 01	Kit-High Altitude (1500 m)	1
*	24 755 02	Kit-High Altitude (3000 m)	1
33	24 027 18	Housing - Blower	1
34	M0545016	Screw	3
35	SM0545020	Screw	2
36	24 146 02	Plate - Backing, #2 side	1
37	M0645016	Screw	6
39	24 063 08	Baffle - Cylinder Barrel	1
40	24 063 24	Baffle - Valley, #1 side	1
41	M0545010	Screw	2
42	24 063 17	Baffle - Valley, #2 side	1
43	M0545016	Screw	2
44	24 063 20	Baffle - Cylinder Barrel	1
45	24 146 08	Plate - Backing, #1 side	1
46	M0551016	Screw	1
*	24 100 01	Nut - Plastic	2
*	24 100 02	Nut - Plastic	2
*	25 139 16	Plug - Button	1
*	24 113 03	Decal - Key Switch	1

*Not Illustrated

Note: Obtain these items directly from Kohler Co., Kohler, WI 53044 1-800-544-2444



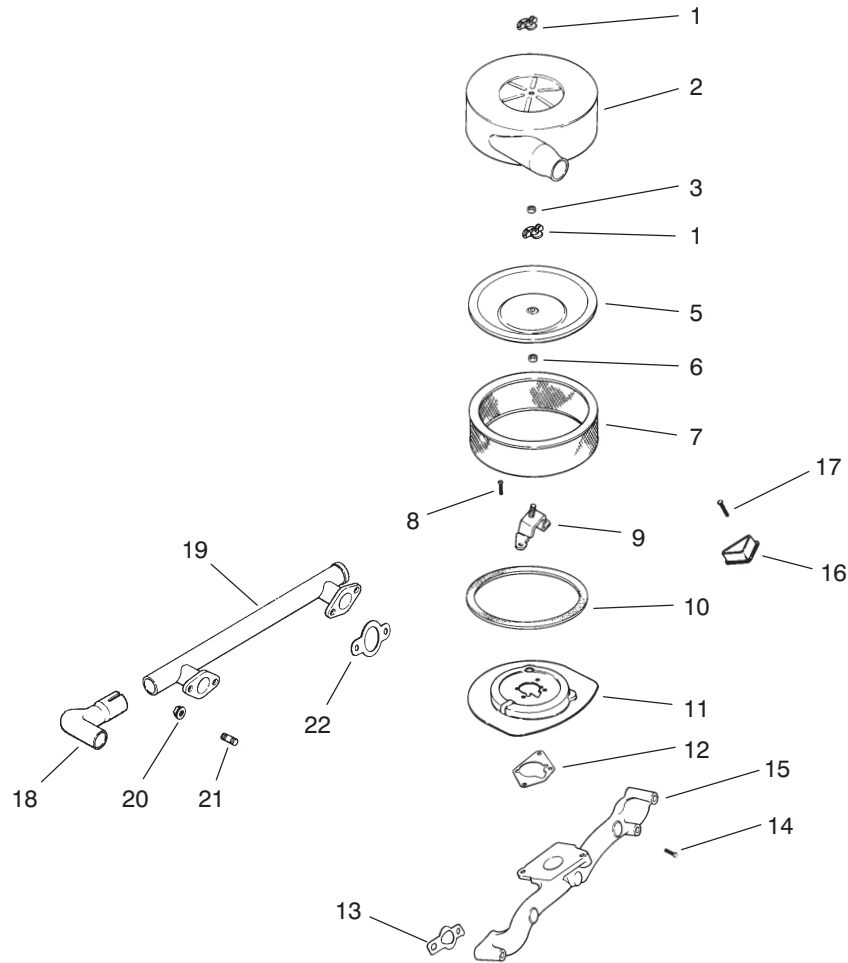
T-1989

ENGINE CONTROLS

Ref. No.	Part No.	Description	No. Used	Ref. No.	Part No.	Description	No. Used
1	SM0545020	Screw	1	20	24 225 01	Cable – Choke	1
2	41 468 03	Washer – Wave	1	21	24 086 06	Screw – Phillips	2
3	M0401030	Screw	1	22	24 126 06	Bracket – Speed Control Shaft	1
4	24 468 01	Washer	3	23	X-25-37	Washer – Plain	1
5	24 090 03	Lever – Throttle Control	1	24	X-83-4	Nut – Hex.	1
6	24 089 01	Spring – Linkage	1	25	24 468 03	Washer – Wave	2
7	24 089 18	Spring – Governor	1	26	25 431 01	Spacer	1
8	SM0642025	Screw	1	27	X-25-63	Washer – Plain	1
9	24 090 14	Lever – Governor	1	28	24 378 01	Panel – Control	1
10	SM0641060	Nut	1	29	52 448 02	Tab – Locking	1
11	25 158 08	Bushing – Linkage Retaining	1	30	12 112 01	Spacer	1
12	24 079 01	Linkage – Throttle	1	31	M0647060	Nut – Hex.	1
13	25 158 11	Bushing – Linkage retaining	1	32	M0547050	Nut	1
14	24 126 13	Bracket – Control	1	33	24 079 03	Linkage – Speed Control	1
15	M0545010	Screw	2	34	SM0645016	Screw	4
16	24 090 06	Lever – Speed control Shaft	1	35	24 090 07	Lever – Throttle Actuator	1
17	24 755 48	Kit – Speed Control (Incl. Ref. #18, 19, 21, 23, 24, 31 & 32)	1	36	M0446030	Nut	1
18	24 144 20	Shaft – Speed Control	1	37	24 090 05	Lever – Choke	1
19	24 341 02	Knob – Speed control	1	38	SM0545016	Screw	1
				39	24 079 02	Linkage – Choke	1
				*	24 113 06	Decal – Control Panel	1

*Not Illustrated

Note: Obtain these items directly from Kohler Co., Kohler, WI 53044 1-800-544-2444



T-2183-1

AIR INTAKE, FILTRATION, & EXHAUST

Ref. No.	Part No.	Description	No. Used
1	12 100 01	Wing Nut	2
2	24 096 33	Cover – Air Cleaner	1
3	24 032 09	Seal	1
5	24 096 01	Cover – Inner Air Cleaner	1
6	24 032 11	Seal – Air Intake	1
7	24 083 03	Element – Air Cleaner	1
8	M0639016	Screw	3
9	24 126 50	Bracket – Air cleaner	1
10	24 032 07	Seal – Air Cleaner	1
11	24 094 05	Base – Air cleaner	1
12	24 041 06	Gasket – Air Cleaner Base	1

Ref. No.	Part No.	Description	No. Used
13	24 041 01	Gasket – Intake Manifold	2
14	M0639055	Screw	4
15	24 164 14	Manifold – Intake	1
16	24 096 17	Cover – Blower Housing	2
17	X-67-3	Screw – Slotted Hd.	2
18	24 382 04	Pipe – Exhaust	1
19	24 164 11	Manifold – Exhaust	1
20	M0841080	Nut	4
21	M0829033	Stud – Exhaust	4
22	24 041 02	Gasket – Exhaust	2

Note: Obtain these items directly from Kohler Co., Kohler, WI 53044 1-800-544-2444

TORO PART NUMBER INDEX

Part No.	Description	Pg. No.	Ref. No.	Qty.	Part No.	Description	Pg. No.	Ref. No.	Qty.
3-3107	Hose	14	17	1	13-4490	Guard - Sheave	16	55	1
3-3107	Hose	1	24	1	13-4560	Weight - Flap	17	48	18
3-3175	Cover - Battery	15	39	1	13-4560	Weight - Flap	4	48	18
3-5967	Support - Battery	15	37	2	13-4570	Sprocket - Idler	7	52	1
3-8135	Spring	15	48	2	13-4590	Chain	7	53	1
3-9155	Key - Square	19	32	1	13-4700	Flap	17	47	1
4-1920	Washer	19	38	1	13-4700	Flap - Rubber	4	47	1
5-0678	Rod - Clamp, Battery	16	51	2	13-4800	Guard - Belt	18	54	1
5-0738	Key - Square	6	14	4	13-4800	Guard - Belt	5	57	1
5-1718	Key - Square	3	3	1	13-4880	Sprocket	3	24	1
8-2329	Asm-Air Cleaner	18	64	1	13-4960	Shaft - Plate, Finger	10	22	6
12-8810	Spring	9	21	2	13-5500	Bell Crank - Lift, L.H.	3	28	1
13-0050	Spring	3	29	2	13-5500	Bell Crank - Lift, L.H.	15	44	1
13-0050	Spring	15	45	2	13-5520	Spacer	15	9	2
13-0100	Block - Pivot	3	13	2	13-5520	Spacer	3	9	2
13-0100	Block - Pivot	15	16	2	13-5530	Rod - Adjustment, Spring	3	30	2
13-0320	Collar - Lock	10	45	2	13-5530	Rod - Adjustment, Spring	15	46	2
13-0330	Block - Pivot	17	40	1	13-5540	Link - Lift	10	39	2
13-0330	Block - Pivot	10	47	2	13-5550	Arm - Gauge Wheel	10	48	2
13-0330	Block - Pivot	4	40	1	13-5570	Bar - Pivot	10	49	2
13-0360	Spacer	10	36	2	13-5590	Rod - Adjustment	11	51	2
13-0480	Spring	3	25	1	13-5670	Spacer - Locking	11	52	2
13-0480	Spring	15	41	1	13-5680	Asm-Jack	12	13	1
13-0560	Spacer	10	34	2	13-5790	Shield - Shaft, Side	2	50	1
13-0600	Pulley - Idler	15	32	1	13-5870	Shield - Front	2	48	1
13-1390	Retainer - Flap	17	50	1	13-5880	Shield - Shaft, Drop	2	49	1
13-1390	Retainer - Flap	4	50	1	13-5900	Shaft - Drive, Front	6	21	1
13-1420	Cover - Inspection	17	30	1	13-5910	Shaft - Drive, Side	6	13	1
13-1420	Cover - Inspection	4	30	1	13-6000	Base - Box, Gear	1	23	1
13-2240	Key - Square	17	5	1	13-6020	Sheave	6	4	1
13-2240	Key - Square	4	5	1	13-6030	Pulley	4	4	1
13-2480	Clamp - Finger	10	31	276	13-6050	Bushing	6	3	1
13-2640	Belt	5	59	1	13-6070	Bushing	4	3	1
13-2650	V-Belt	19	31	1	13-6090	Cover - Guard, Side	5	52	1
13-2670	Sheave	16	64	1	13-6110	Sprocket	6	7	1
13-2680	Bushing	10	10	1	13-6120	Frame	1	18	1
13-2680	Bushing	15	27	1	13-6200	Pin - Hitch	2	46	1
13-2800	Pulley	17	4	1	13-6200	Pin - Hitch	16	57	1
13-2810	Key - Square	17	9	1	13-6240	Rod - Adjustment	1	20	1
13-2810	Key - Square	4	9	1	13-6260	Screw - Adjustment	15	8	2
13-2840	Key - Square	10	23	1	13-6260	Screw	3	8	2
13-2870	Wheel - Gauge	11	50	2	13-6280	Blower	17	33	1
13-2930	Decal - Slow Moving Vehicle	9	10	1	13-6280	Blower and Throat	4	33	1
13-2970	Bushing	17	3	1	13-6330	Key - Square	15	3	1
13-3070	Spacer	10	37	2	13-6360	Rod - Lift	17	38	1
13-3090	Spring	10	30	66	13-6360	Rod - Lift, Flap	4	38	1
13-3130	Flap - End	17	45	2	13-6390	Handle - Flap	17	35	1
13-3130	Flap - End	4	45	2	13-6390	Handle - Flap	4	35	1
13-3320	Pulley	19	39	1	13-6410	Decal	4	13	1
13-3330	Bushing	19	33	1	13-6410	Decal	17	15	1
13-3350	Bracket - Mounting	4	10	1	13-6440	Asm-Wheel	12	*	1
13-3350	Mounting Bracket	17	10	1	13-6450	Bracket - Wheel, Caster	12	8	1
13-3420	Asm-Fan	4	21	1	13-6460	Wheel	12	6	1
13-3420	Asm-Fan	17	21	1	13-6490	Gasket - .002 Thk.	8	5	A/R
13-3490	Sleeve	12	16	1	13-6520	Seal	8	3	2
13-3510	Bearing - Thrust	12	11	1	13-6540	Shim - .010 Thk.	8	20	A/R
13-3610	Sleeve - Felt	12	12	1	13-6590	Gasket - .015 Thk.	8	8	A/R
13-3710	Washer	16	68	1	13-6600	Gasket - .005 Thk.	8	7	A/R
13-3710	Washer - Flat	9	25	2	13-6610	Gasket - .003 Thk.	8	6	A/R
13-3710	Washer - Special	3	37	1	13-6630	Shim - .005 Thk.	8	21	A/R
13-3720	Key - Square	6	10	1	13-6650	Housing	8	13	1
13-3790	Shaft - Fan	4	6	1	13-6670	Pin - Connector	7	50	1
13-3790	Shaft - Fan	17	6	1	13-6680	Chain	7	49	1
13-3850	Plate - Blower Access	17	12	1	13-6690	Coupling Half	6	15	2
13-3850	Plate - Blower Access	4	12	1	13-6700	Finger - Nylon	10	29	276
13-3930	Tank - Gas	14	23	1	13-6730	Rivet	12	14	1
13-3960	Asm-Strap	14	25	2	13-6740	Handle	12	15	1
13-3970	Felt Strip	14	26	2	13-6750	Ram	12	10	1
13-3970	Strip - Felt	14	29	2	13-6760	Decal - Caution	9	6	1
13-3990	Handle - Trip	3	26	1	13-6790	Cable - Battery	15	47	2
13-3990	Handle - Trip	15	42	1	13-6890	Guide - Rope	14	15	1
13-4310	Tongue	2	45	1	13-6890	Guide - Rope	1	33	1
13-4490	Guard - Sheave	3	31	1	13-6910	Spacer - Guide, Rope	14	14	1

*Not Illustrated

TORO PART NUMBER INDEX (Cont.)

Part No.	Description	Pg. No.	Ref. No.	Qty.	Part No.	Description	Pg. No.	Ref. No.	Qty.
13-6910	Spacer - Guide, Rope	1	32	1	93-0181	Tire	14	4	2
13-7330	Stiffener - R.H.	9	*	1	93-0181	Tire	1	7	2
13-7340	Stiffener - L.H.	9	16	1	93-0182	Asm-Wheel	14	6	2
13-7430	Decal - Warning	9	14	1	93-0182	Asm-Wheel	1	10	2
13-7460	Plate - Caution, Hitch	14	37	1	93-0183	Belt	18	57	1
13-7460	Plate - Caution, Hitch	2	43	1	93-0184	Decal - Hopper	9	33	2
20-9580	Rope	14	13	1	93-0185	Asm-Center Plate, Stake	10	27	60
20-9580	Rope - Latch	1	31	1	93-0187	Asm-End Plate, Stake	10	28	3
27-7220	Detergent - Cleaning, Air	13	* A/R		93-0189	Asm-End Plate, Stake	10	25	3
33-1260	Asm-Cover	13	11	1	93-0197	Flex Tip - Reel	10	26	1
33-1270	Bowl - Clear	13	10	1	93-0198	Bracket - Support, Muffler	19	18	1
33-1280	Asm-Sleeve	13	9	1	93-0199	Strap - Muffler Support	19	23	1
33-1300	Asm-Element	13	6	1	93-4000	Strap - Muffler Support	19	22	1
33-1310	Baffle	13	5	1	93-4001	Pulley - 4 Groove	10	3	1
33-1320	Asm-Cup	13	4	1	93-4003	Gate	9	13	1
33-1330	Assembly - Nut	13	3	1	93-4009	Main Frame	14	11	1
33-1340	Asm-Clamp	13	2	1	93-4020	Cover - Inspection	5	61	1
33-1350	Asm-Band, Mounting	13	1	2	93-4020	Cover - Inspection	18	67	1
42-1860	Asm-Front Shaft	6	36	1	93-4030	Strap - Hopper, Front	9	31	2
42-1870	Asm-Rear Shaft	6	19	1	93-4031	Strap - Hopper, Top	9	18	4
42-2290	Yoke and Tube	6	44	1	93-4032	Shaft - Jack	3	1	1
42-2300	Yoke and Shaft	7	46	1	93-4032	Shaft - Jack	15	1	1
42-2310	Yoke - Front	6	29	1	93-4033	Pulley - Driver	3	36	1
42-2340	Centralizer - Guard	6	33	1	93-4033	Pulley - Driver	16	67	1
42-2350	Shield - Inner	6	37	1	93-4034	V-Belt	10	2	1
42-2360	Asm-Yoke & Tube	6	25	1	93-4041	Decal - Op. Instructions	17	20	1
42-2370	Yoke and Shaft	6	26	1	93-4041	Decal - Op. Instructions	4	20	1
42-2380	Shield - Outer	6	31	1	93-4042	Suppor	9	19	2
46-6810	Screw	19	19	2	93-4409	Tongue	16	61	1
47-2830	Screw - Machine	19	11	8	93-4415	Pulley - Idler	11	54	1
48-7700	Screw - Hex. Hd.	19	24	3	93-4416	Bracket - Support, Muffler	19	16	1
53-4420	Decal - Gas	14	28	1	93-4417	U-Bolt	19	14	1
55-7290	Battery	15	38	1	93-4418	Guard - Manifold, Exhaust	19	5	1
56-6210	Bearing	15	24	2	93-4419	Guard - Muffler, Rear	19	12	1
56-6220	Bearing	17	25	2	93-4422	Guard - Belt	10	1	1
56-6220	Bearing	4	25	2	93-4428	Spacer - Pulley	10	12	1
56-6230	Bearing	10	21	2	93-4429	Washer - Pulley	11	60	1
56-6230	Bearing	3	35	2	93-4430	Shaft	8	12	1
56-6230	Bearing	16	66	2	93-4433	Pulley Bracket	10	17	1
56-6250	Bearing	6	8	4	93-4434	Support Bracket	10	13	1
59-1460	Plug - Vent	8	26	1	93-4438	Bracket - Belt Guard	3	40	1
61-5950	Decal	15	40	1	93-4438	Bracket - Belt Guard	16	71	1
63-5210	Spindle - Driveside	16	65	1	93-4440	Bell Crank - Lift, R.H.	3	18	1
63-5210	Spindle - Driveside	3	34	1	93-4440	Bell Crank - Lift, R.H.	15	21	1
63-5250	Spacer	11	56	1	93-4445	Trailing Arm - R.H.	10	11	1
63-5300	Trailing Arm-L.H.	10	41	1	93-7307	Decal - Warning	17	19	1
63-8360	Key	19	7	2	93-7307	Decal - Warning	4	19	1
65-5871	Tube - Manual	9	34	1	93-7701	Hose - Air Cleaner	18	65	1
65-5890	Cap - Tube	9	35	2	93-7703	Plate - Clamp Guard	19	2	2
67-5360	Decal	17	11	1	93-7706	Tube - Spacer	15	33	1
67-5360	Decal	4	11	1	93-7707	Shield - Belt Guard	18	69	1
67-5360	Decal	14	39	1	93-7708	Strip - Sealing	9	42	1
67-5360	Decal - Caution	1	19	4	93-7708	Strip - Sealing	5	62	1
67-7920	Decal - Toro	9	17	2	93-7708	Strip - Sealing	18	68	1
67-9730	Bracket - Air Cleaner	18	63	1	93-7709	Pad	14	27	1
68-3220	Key - Square	15	2	1	93-7709	Pad	2	41	1
68-3220	Key - Square	3	2	1	93-7711	Hook - Transport	10	33	2
70-2350	Gear Box - Complete	6	17	1	93-7715	Ball Bearing	11	62	4
70-2360	Cap	8	17	1	94-1756	Asm-Muffler Clamp	19	4	2
70-2370	Gear - 23 Tooth	8	23	1	94-4522	Hose - Fuel Line	14	34	1
70-2380	Key - Tapered	8	16	2	94-9128	Panel - Front	9	5	2
70-2390	Shaft	8	24	1	94-9129	Panel - L.H.	9	3	1
70-2410	Ring - Retaining	8	25	3	94-9133	Panel - R.H.	9	*	1
70-2420	Cap	8	4	2	94-9135	Panel - Top	9	2	1
70-2440	Collar - Thrust	8	11	1	94-9137	Panel - Bottom, (R.H.)	9	29	1
70-2450	Gear - 17 Tooth	8	15	1	94-9138	Panel - Bottom, (Middle)	9	28	1
92-1187	Kit-Quick Disconnect	7	*	1	94-9139	Panel - Bottom, L.H.	9	23	1
92-1580	Kit-Bearing, Shield	6	32	2	94-9141	Screen - Top	9	1	2
92-1581	Decal - Safety	7	58	1	95-3112	Flap - Lower	4	44	1
92-1582	Decal - Safety	6	35	1	95-3112	Flap - Lower	17	44	1
92-2409	Asm-Hopper	9	*	1	95-3114	Hinge - Continuous	5	63	1
92-8309	Decal - Warning	17	18	1	95-3114	Hinge - Continuous	18	72	1
92-8309	Decal - Warning	4	18	1	217-103	Bolt - Wheel	14	3	12

*Not Illustrated

TORO PART NUMBER INDEX (Cont.)

Part No.	Description	Pg. Ref.		Part No.	Description	Pg. Ref.	
		No.	Qty.			No.	Qty.
217-103	Bolt - Wheel	1	8 12	322-6	Screw - Hex. Hd.	19	13 2
2112-11	Clamp - Muffler	19	26 1	322-7	Screw - Hex. Hd.	17	1 3
2115-76	Kit-Center Parts	6	43 2	322-7	Screw - Hex. Hd.	6	1 3
2115-78	Ring - Lock	7	47 8	322-7	Screw - Hex. Hd.	15	29 3
2115-79	Ring - Lock	6	27 8	322-7	Screw - Hex. Hd.	3	33 2
2115-80	Fitting - Grease	6	20 4	322-7	Screw - Hex. Hd.	16	63 2
2115-81	Yoke	6	42 2	323-2	Screw - Hex. Hd.	2	39 6
2115-85	Fitting - Grease	6	34 1	323-4	Screw - Hex. Hd.	12	1 3
2115-88	Kit-Bearing & Cross	6	30 2	323-4	Screw - Hex. Hd.	10	4 6
2115-94	Yoke - Rear	6	38 1	323-5	Screw - Hex. Hd.	12	3 3
222-8	Cap - Gas	14	24 1	323-5	Screw - Hex. Hd.	11	63 3
232-27	Stem - Valve	14	5 2	323-5	Screw - Hex. Hd.	15	49 4
232-27	Stem - Valve	1	9 2	323-6	Screw - Hex. Hd.	9	38 4
235-15	Grip - Handle	14	19 1	323-6	Screw - Hex. Hd.	17	34 8
235-15	Grip - Handle	1	28 1	323-6	Screw - Hex. Hd.	4	34 8
242-54	Hub	14	7 2	323-7	Screw - Hex. Hd.	4	15 6
242-54	Wheel - Hub	1	11 2	323-7	Screw - Hex. Hd.	18	56 6
242-55	Cap - Hub	1	1 2	323-8	Screw - Hex. Hd.	14	22 1
242-55	Cap - Hub	14	43 2	323-8	Screw - Hex. Hd.	1	25 1
2412-40	Clamp - Conduit	14	16 3	323-9	Screw - Hex. Hd.	19	9 4
2412-40	Clamp - Conduit	1	34 3	323-9	Screw - Hex. Hd.	17	41 1
2412-42	Clamp	18	66 2	323-9	Screw - Hex. Hd.	4	41 1
2412-93	Clamp	14	36 1	323-9	Screw - Hex. Hd.	10	44 5
2412-102	R-Clamp	9	36 2	323-10	Screw - Hex. Hd.	19	37 1
2412-103	R-Clamp	19	30 1	323-10	Screw - Hex. Hd.	11	61 1
2412-108	Clamp - Hose	14	31 2	324-7	Screw - Hex. Hd.	15	10 3
250-5	Strap - Locking	15	36 2	324-7	Screw - Hex. Hd.	3	10 3
251-246	Collar - Locking, Eccentric	6	22 4	324-10	Screw - Hex. Hd.	3	41 1
253-127	Seal	14	10 2	324-10	Screw - Hex. Hd.	16	60 1
253-127	Seal	1	14 2	325-3	Screw - Hex. Hd.	1	15 2
254-57	Cup - Bearing	8	9 3	325-4	Screw - Hex. Hd.	6	18 4
254-58	Cone - Bearing	8	10 3	325-5	Screw - Hex. Hd.	1	22 4
254-61	Cup - Bearing	1	6 2	325-5	Screw - Hex. Hd.	6	39 4
254-61	Cup - Bearing	14	40 2	325-5	Screw - Hex. Hd.	2	52 4
254-61	Cup - Bearing	8	18 1	325-5	Screw - Hex. Hd.	11	55 1
254-62	Cone - Bearing	14	2 2	325-6	Screw - Hex. Hd.	6	12 4
254-62	Cone - Bearing	1	5 2	325-6	Screw - Hex. Hd.	17	24 7
254-62	Cone - Bearing	8	19 1	325-6	Screw - Hex. Hd.	4	24 7
254-65	Cone - Bearing	14	9 2	325-6	Screw - Hex. Hd.	9	27 3
254-65	Cone - Bearing	1	13 2	325-7	Screw - Hex. Hd.	9	41 2
254-66	Cup - Bearing	14	8 2	325-7	Screw - Hex. Hd.	18	58 1
254-66	Cup - Bearing	1	12 2	325-7	Screw - Hex. Hd.	5	60 1
256-298	Bushing	11	59 2	325-9	Screw - Hex. Hd.	10	43 4
2710-29	Link - Offset	7	56 1	325-12	Screw - Hex. Hd.	7	55 1
2710-30	Link - Connecting	7	54 1	325-13	Screw - Hex. Hd.	12	9 1
282-22	Clevis	3	16 2	325-14	Screw - Hex. Hd.	10	8 2
282-22	Clevis	15	19 2	325-20	Screw - Hex. Hd.	15	13 1
283-2	Pin - Clevis	3	15 2	327-6	Screw - Hex. Hd.	10	18 1
283-2	Pin - Clevis	15	18 2	327-6	Screw - Hex. Hd.	16	62 2
283-39	Pin - Clevis	9	11 3	328-10	Bolt - Hex. Hd.	10	40 1
283-46	Pin - Clevis	6	40 1	328-23	Bolt - Hex. Hd.	2	36 2
285-12	Plug - Pipe	8	14 2	3217-5	Nut - Hex.	17	52 2
302-2	Fitting - Grease	7	45 1	3217-5	Nut - Hex.	5	51 2
302-5	Fitting - Grease	11	58 2	3217-5	Nut - Hex.	16	54 4
304-75	Fitting - Tube	14	30 1	3217-7	Nut - Hex.	4	8 1
321-3	Screw - Hex. Hd.	17	43 20	3217-7	Nut - Hex.	17	8 1
321-3	Screw - Hex. Hd.	4	43 20	3217-7	Nut - Hex.	10	9 4
321-4	Screw - Hex. Hd.	17	14 4	3217-7	Nut - Hex.	12	4 3
321-4	Screw - Hex. Hd.	4	14 4	3217-8	Nut - Hex.	3	20 4
321-4	Screw - Hex. Hd.	3	39 1	3217-8	Nut - Lock	15	26 5
321-4	Screw - Hex. Hd.	5	53 2	3217-9	Nut - Hex.	1	35 4
321-4	Screw - Hex. Hd.	18	55 2	3217-9	Nut - Hex.	6	9 5
321-4	Screw - Hex. Hd.	16	69 1	3217-9	Nut - Hex.	11	53 2
321-5	Screw - Hex. Hd.	17	46 14	3217-12	Nut - Hex.	2	38 2
321-5	Screw - Hex. Hd.	4	46 14	3218-2	Nut - Jam	18	62 2
321-6	Screw - Hex. Hd.	19	35 3	3218-3	Nut - Jam	15	5 6
321-8	Screw - Hex. Hd.	17	49 18	3218-3	Nut - Jam	3	5 8
321-8	Screw - Hex. Hd.	4	49 18	3218-3	Nut - Jam	6	5 6
321-13	Screw - Hex. Hd.	4	1 3	3218-3	Nut - Jam	14	21 1
322-1	Screw - Hex. Hd.	18	52 1	3218-3	Nut - Jam	1	26 1
322-1	Screw - Hex. Hd.	5	54 1	3218-5	Nut - Hex.	4	17 4
322-5	Screw - Hex. Hd.	8	1 24	3218-5	Nut - Hex.	15	34 2
322-5	Screw - Hex. Hd.	18	61 1	3218-5	Nut - Jam	17	17 4

*Not Illustrated

TORO PART NUMBER INDEX (Cont.)

Part No.	Description	Pg. No.	Ref. No.	Qty.	Part No.	Description	Pg. No.	Ref. No.	Qty.
3218-6	Nut - Jam	1	21	1	3256-29	Washer - Flat	1	4	2
3218-6	Nut - Jam	17	39	2	3256-29	Washer - Flat	14	41	2
3218-6	Nut - Jam	4	39	2	3256-55	Washer - Flat	9	20	28
3219-3	Nut - Hex	15	17	2	3256-82	Washer - Flat	19	15	2
3219-3	Nut - Hex.	3	14	2	3257-8	Key - Woodruff	6	23	1
3229-7	Bolt - Carriage	9	15	50	3258-19	Screw - Machine	13	7	2
3234-33	Screw - Hex. Hd.	18	70	2	3258-165	Screw - Rd. Hd.	9	32	2
3234-33	Screw - Hex Flange Hd.	9	4	96	3259-15	Screw - Drive	2	44	4
3243-6	Screw - Set	15	4	2	3272-6	Pin - Cotter	6	24	1
3243-6	Screw - Set	3	4	2	3272-10	Pin - Cotter	3	17	2
3244-14	Screw - Set, - Sq. Hd.	17	16	4	3272-10	Pin - Cotter	15	20	2
3244-14	Screw - Set, Square Hd.	4	16	4	3272-10	Pin - Cotter	3	27	1
3244-21	Screw - Set	15	35	2	3272-10	Pin - Cotter	15	43	1
3247-3	Screw - Set	6	16	4	3272-12	Pin - Cotter	9	7	3
3247-6	Screw - Set	6	6	6	3272-12	Pin - Cotter	17	37	1
3247-6	Screw - Set	3	23	2	3272-12	Pin - Cotter	4	37	1
3250-32	Screw - Phillips Pan Hd.	9	30	9	3272-17	Pin - Cotter	14	1	3
3253-3	Washer - Lock	4	2	9	3272-17	Pin - Cotter	1	2	3
3253-3	Washer - Lock	17	13	6	3272-22	Pin - Cotter	3	22	2
3253-3	Washer - Lock	19	34	3	3272-22	Pin - Cotter	15	23	2
3253-3	Washer - Lock	3	38	1	3290-55	Rivet - Pop	14	38	4
3253-3	Washer - Lock	16	53	5	3290-211	Washer - Spring	3	42	1
3253-4	Washer - Lock	17	2	4	3290-211	Washer - Spring	16	70	1
3253-4	Washer - Lock	6	2	3	3290-343	Pin - Hair Cotter	16	58	1
3253-4	Washer - Lock	19	25	2	3290-343	Pin - Hair, Cotter	2	47	1
3253-4	Washer - Lock	15	28	5	3296-23	Nut - Lock	12	5	1
3253-4	Washer - Lock	3	32	2	3296-23	Nut - Lock	10	15	1
3253-4	Washer - Lock	5	55	1	3296-23	Nut - Lock	9	24	3
3253-6	Washer - Lock	3	19	5	3296-39	Nut - Lock	17	23	7
3253-6	Washer - Lock	15	25	5	3296-39	Nut - Lock	4	23	7
3253-7	Washer - Lock	10	7	2	3296-39	Nut - Lock	9	39	4
3253-7	Washer - Lock	6	11	13	3296-39	Nut - Lock	16	50	4
3253-7	Washer - Lock	1	16	6	3296-42	Nut - Lock	17	42	52
3253-7	Washer - Lock	9	40	2	3296-42	Nut - Lock	4	42	52
3253-9	Washer - Lock	2	37	2	3296-47	Nut - Lock	19	17	4
3253-21	Washer - Lock	12	2	3	3296-48	Nut - Lock	3	42	1
3253-21	Washer - Lock	10	5	7	3296-53	Nut - Lock	10	14	1
3253-21	Washer - Lock	17	7	9	3296-53	Nut - Lock	16	56	2
3253-21	Washer - Lock	4	7	9	32103-12	Nut - Wing	17	31	4
3253-21	Washer - Lock	19	36	1	32103-12	Nut - Wing	4	31	4
3253-21	Washer - Lock	2	40	6	32104-95	Screw - Self Tapping	14	18	2
3254-2	Washer - Lock	8	2	24	32104-95	Screw - Self-Tapping	1	29	2
3254-2	Washer - Lock ITLW	19	27	1	32104-96	Screw - Self Tapping	14	12	1
3254-8	Washer - Lock, Int. Tooth	11	57	2	32104-96	Screw - Self-Tapping	1	30	1
3256-22	Washer - Flat	17	32	32	32104-109	Screw	14	33	1
3256-22	Washer - Flat	4	32	32	32104-109	Screw - Hex. Hd.	5	58	4
3256-22	Washer - Flat	14	35	1	32107-11	Nut - Square	13	8	2
3256-22	Washer - Flat	16	52	4	32121-45	Pin - Roll	10	46	2
3256-23	Washer - Flat	19	40	2	32122-42	Screw - Machine	9	22	36
3256-23	Washer - Flat	18	53	1	32128-20	Nut - Lock, Flange	19	1	4
3256-23	Washer - Flat	5	56	1	32128-25	Nut - Lock, Flange	18	60	4
3256-23	Washer - Flat	7	57	3	32128-29	Nut - Lock, Flange	19	10	4
3256-24	Washer - Flat	10	6	7	32128-32	Nut - Lock	9	9	193
3256-24	Washer - Flat	3	12	2	32128-32	Nut - Lock, Flange	18	71	2
3256-24	Washer - Flat	15	15	7	32128-49	Nut - Flange, Lock	15	12	1
3256-24	Washer - Flat	17	22	14	32136-1	Nut - Slotted	1	3	2
3256-24	Washer - Flat	4	22	14	32136-1	Nut - Slotted	14	42	2
3256-24	Washer - Flat	2	51	4	32140-94	Screw - Hex. Hd.	10	32	276
3256-26	Washer - Flat	12	7	2	32152-2	Nut - Lock	10	24	12
3256-26	Washer - Flat	15	11	1	32153-2	Nut	3	11	2
3256-26	Washer - Flat	10	16	7	32153-2	Nut	10	35	4
3256-26	Washer - Flat	1	17	6	32153-2	Nut - Lock	15	14	2
3256-26	Washer - Flat	9	26	9	32153-2	Nut - Lock	9	37	2
3256-26	Washer - Flat	7	51	8	32153-2	Nut - Lock	2	42	2
3256-27	Washer - Flat	9	8	3	32153-3	Nut - Lock	19	3	4
3256-27	Washer - Flat	17	36	1	32153-3	Nut - Lock	14	32	4
3256-27	Washer - Flat	4	36	1	32153-3	Nut - Lock	18	59	2
3256-28	Washer - Flat	14	20	1	32153-5	Nut	10	38	6
3256-28	Washer - Flat	3	21	2	32153-5	Nut - Lock	17	27	8
3256-28	Washer - Flat	15	22	2	32153-5	Nut - Lock	4	27	8
3256-28	Washer - Flat	1	27	1	32153-6	Nut	10	42	1

*Not Illustrated

PRODUCT CHANGES

In an effort to make improvements available to TORO owners as quickly as possible – minor changes are incorporated into Toro's products from time to time that do not become immediately shown in the Parts Catalog. If such a change has been made in your unit – which is not reflected in your manual – see your TORO Distributor or his Authorized TORO Service Dealer for information and part numbers.

IDENTIFICATION AND ORDERING

MODEL AND SERIAL NUMBERS

The Rake—O—Vac has two identification numbers; a model number and a serial number. The two numbers are stamped on a plate which is located on the left side of the frame behind the hitch. In any correspondence concerning the Rake—O—Vac – supply model and serial numbers to assure that correct information and replacement parts are obtained.

To order replacement parts from an Authorized TORO Service Dealer – supply the following information:

1. Model and serial number of the Rake—O—Vac.
2. Part number – description – and the quantity of part(s) desired.

NOTE: Do not order by reference number if a parts catalog is being used; use the PART NUMBER.

TABLE OF CONTENTS

Description	Page	Description	Page
Frame Assembly (Model 07052)	1–2	Jackshaft And Lifting Mechanism	
Jackshaft And Lifting Mechanism		(Model 07050)	15–16
(Model 07052)	3	Blower And Throat Assembly	
Blower And Throat Assembly		(Model 07050)	17–18
(Model 07052)	4–5	Engine Assembly	19
Drive Shafts & Gear Box (Model 07052)	6–7	Crankshaft & Crankcase	20
Gear Box Assembly (Model 07052)	8	Oil Pan & Lubrication	21–22
Hopper And Rear Tailgate		Cylinder Head, Valve, & Breather	23
(Model 07050 & 07052)	9	Ignition & Electrical System	24
Flex Tip Reel And Trailing Arm		Starting System	25
(Model 07050 & 07052)	10–11	Blower Housing, Baffles, & Fuel System	26
Jack Assembly (Models 07050 & 07052)	12	Engine Controls	27
Air Cleaner Assembly No. 8–2329	13	Air Intake, Filtration, & Exhaust	28
Frame Assembly (Model 07050)	14	TORO Parts Index	29–32

MAINTENANCE RECORD

Date									

MAINTENANCE RECORD

Date								

