



21" RECYCLER[®] MOWER

Model No. 20448 – 7900001 & Up
Model No. 20458 – 7900001 & Up

Parts Catalog

ORDERING REPLACEMENT PARTS

To order replacement parts, please supply: the part number, the quantity, and the description of each part desired.

Contents

Description	Page	Description	Page
Housing Assembly	1	Gear Case Assembly	7
Engine Assembly	2	Engine Briggs & Stratton	
Gearcase & Wheel Assembly	3	Model 12H802-0658-01	8-16
Handle Assembly	4	Toro Part Number Index	17-19
Discharge Chute Assembly	5	Maintenance	20-21
Discharge Plug Assembly	6		

Note:

Accessories

Description	Model / Parts No.	Description	Model / Parts No.
Side Discharge Chute Kit (Model No. 20458 Only)	Model No. 59198	Recycler Side Discharge Kit (Model No. 20448 Only)	Model No. 59291
Recycler Bagging Kit (Model No. 20448 Only)	Model No. 59290	Bag Kit (Model No. 20458 Only)	Model No. 59297

Part Description Abbreviations

Part descriptions in this catalog may include the following abbreviations.

Abbreviation	Meaning	Abbreviation	Meaning
AR	as required	HWHTF	hex washer head thread forming
ASM	assembly	INC	incorporated
CARR	carriage	LH	left hand
DEG	degrees	PH	pan head
FH	flat head	PPH	Phillips pan head
GA	gauge	PTO	power take off
HF	hex flange	RH	right hand
HFW	hex flange washer	SFH	slotted fillister head
HH	hex head	SH	square head
HHF	hex head flange	SHWH	slotted hex washer head
HHST	hex head self tapping	SPH	slotted pan head
HJ	hex jam	STD	standard
HOC	height-of-cut	TAP	self tapping
HS	hex socket	TH	truss head
HSBH	hex socket button head	TTH	Torx truss head
HSFH	hex socket flat head	WH	wing head
HSH	hex socket head		
HWH	hex washer head		

Important Format Explanations

This catalog uses special formats to convey information in illustrations and parts lists. Specifically, one format is used in conjunction with service assemblies and another with quantities associated with reference numbers.

Service Assemblies

Parts within service assemblies have reference numbers in the form $X:Y$. X is the reference number of the service assembly and Y is a sequential number unique to each part within the service assembly.

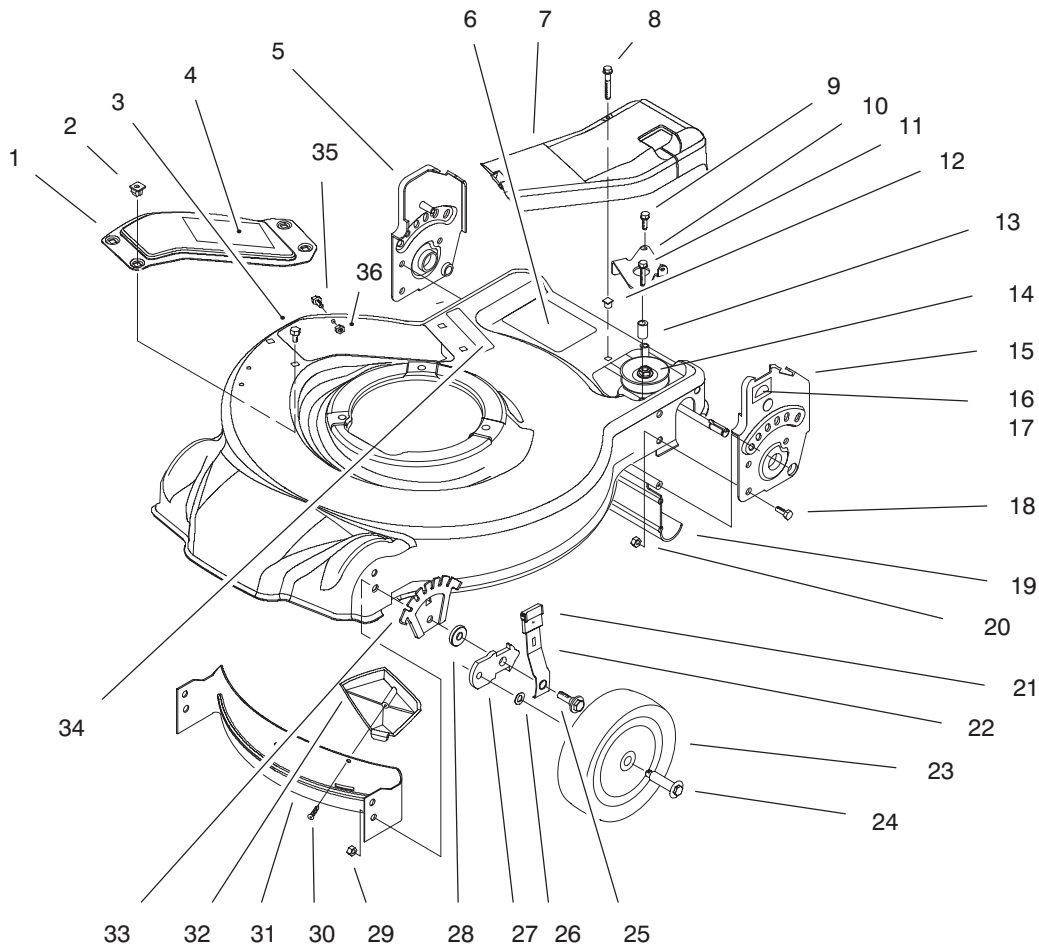
For example, a wheel assembly might be identified by reference number 6, the tire by 6:1, the valve by 6:2, and the wheel by 6:3. When you order the assembly identified by reference number 6, you receive all parts identified by reference numbers 6:1, 6:2, and 6:3. However, you may also order any part individually.

Reference numbers of this type appear in part lists and as callouts in illustrations.

Reference Numbers with Quantities

Illustrations may have a quantity in parentheses next to a reference number, in the form $X (Y)$. X is the reference number. Y in parentheses is the quantity of the part identified by the reference number.

For example, the illustration callout 4 (2) indicates that two parts are used in that instance.

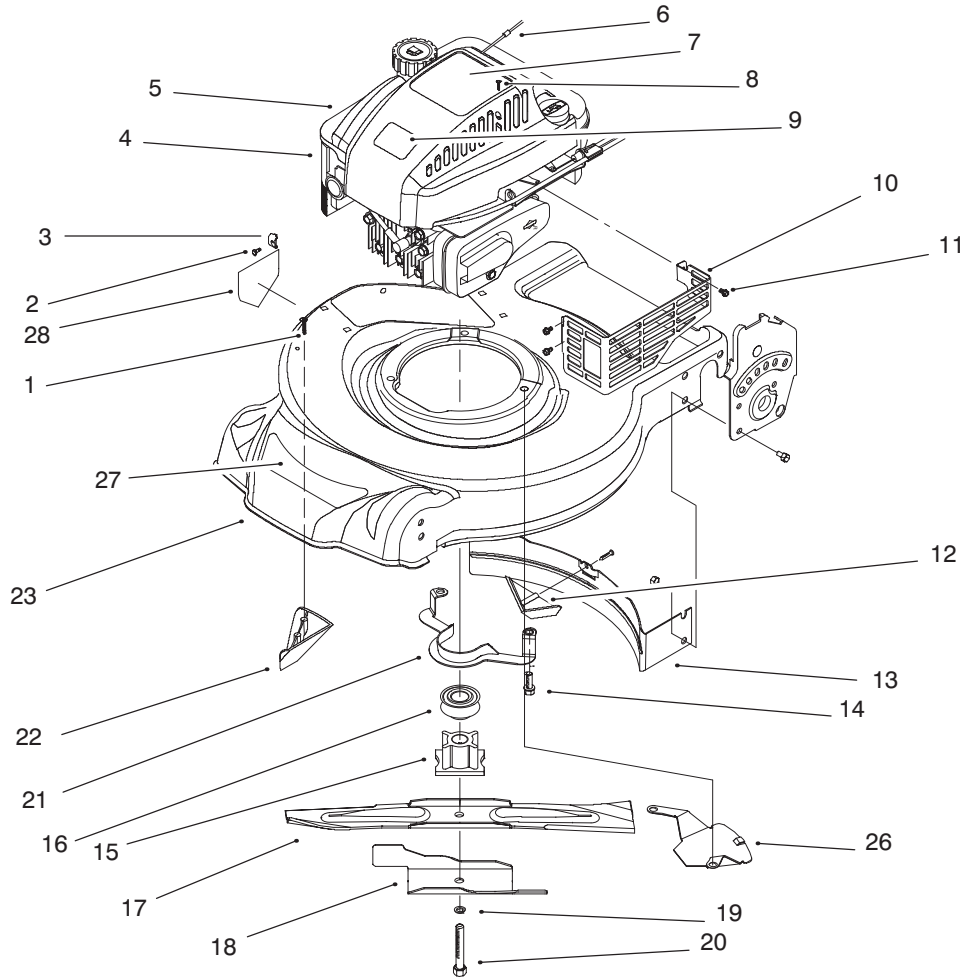


Sheet No.:2

Housing Assembly

Ref. No.	Part No.	Qty.	Description
1	16-9269	1	Cover-Recycling (Model No. 20448 Only) (Incl. Ref. #4)
2	93-0242	4	Grommet (Model No. 20448 Only)
3	32144-4	4	Screw-TAP (Model No. 20448 Only)
4	85-7060	1	Decal-Danger (Model No. 20448 Only)
5	93-0234	1	ASM-Brkt Handle R.H.
6	93-0248	1	Decal-Warning
7	93-0209	1	Cover-Belt
8	32144-119	1	Screw-Thrd Frm
9	49-2040	1	Screw-HH
10	93-0228	1	Brkt-Belt Guide
11	92-1616	1	Screw
12	605120	1	Grommet
13	614673	1	Spacer
14	93-0240	1	ASM-Transmission
15	93-0233	1	ASM-Brkt. Handle L.H.
16	92-2915	1	Decal-HOC

Ref. No.	Part No.	Qty.	Description
17	92-2914	1	Decal-HOC
18	322-3	6	Screw-HH
19	92-8647	1	Shield-Trailing
20	3296-29	6	Nut-Lock
21	92-1008	4	Knob-Height Adjust
22	614687	2	Spring Arm-Front
23	92-9591	2	ASM-Wheel
24	614650	2	Bolt-Shoulder
25	614672	2	Bolt-Shoulder
26	40-1940	2	Washer
27	614637	2	Bracket-Wheel Height Adj
28	92-4890	2	Washer
29	3296-39	2	Nut-Lock
30	93-0231	2	Screw-Plastite
31	93-0222	1	Baffle-Front
32	93-0216	1	Kicker-Front
33	92-4881	2	Plate-Height Adjust
34	93-0262	1	Decal-Warning
35	32105-27	1	Screw-HWH (Model No. 20448 Only)
36	3296-2	1	Nut Lock (Model No. 20448 Only)

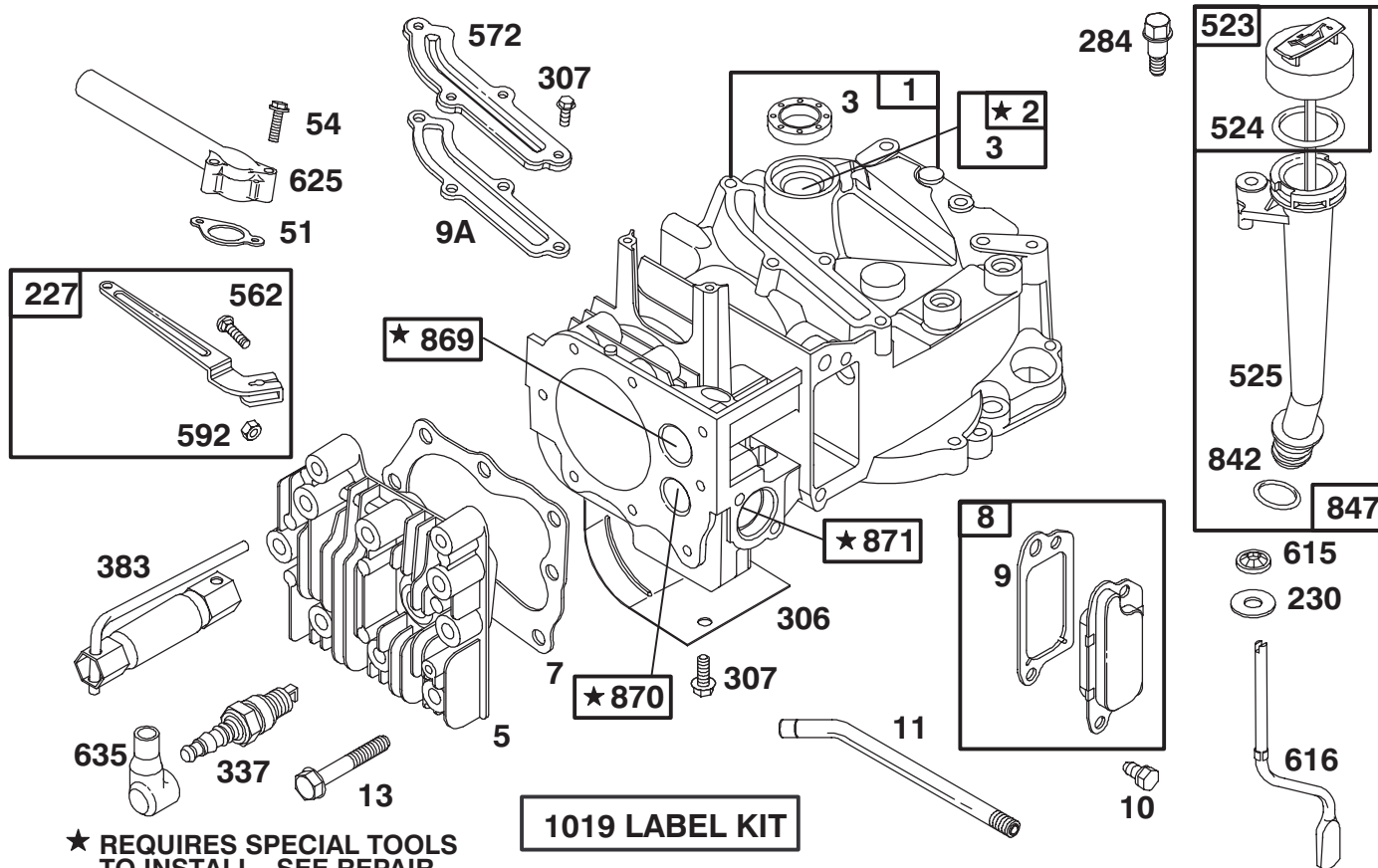


Sheet No.:3

Engine Assembly

Ref. No.	Part No.	Qty.	Description
1	32144-111	2	Screw – PPH
2	93-8470	1	Screw-Clamp (P/W Eng)
3	2210-249	1	Clamp-Casing (P/W Eng)
4		1	Engine-Quantum 6.0 Hp
5	93-0243	1	Shroud-Qt Wedge
6	2210-316	1	Rope-Stop (P/W Eng)
7	95-1657	1	Decal-Recoil
8	32144-121	2	Screw
9	92-2289	1	Plate-Logo
10	82-8550	1	Shield-Muffler
11	32144-73	3	Screw-HWHTF
12	93-0217	1	Kicker-Rear
13	93-0223	1	Baffle-Rear
14	92-1624	3	Screw-Engine
15	62-7540	1	Retainer-Blade
16	62-7550	1	Pulley-Driver
17	93-0241	1	Blade-Steel Deck
18	93-0219	1	Accelerator
19	3253-22	1	Washer-Lock
20	26-0670	1	Bolt-Blade
21	93-0208	1	Guide-Belt
22	93-0218	1	Kicker-Side
23	16-9279	1	Deck-21in Steel Sp

Ref. No.	Part No.	Qty.	Description
			(Incl. Ref. #28)
26	93-4196	1	Shield-Grass
27	93-0245	1	Decal-Deck
28	39-5770	1	Decal-Danger



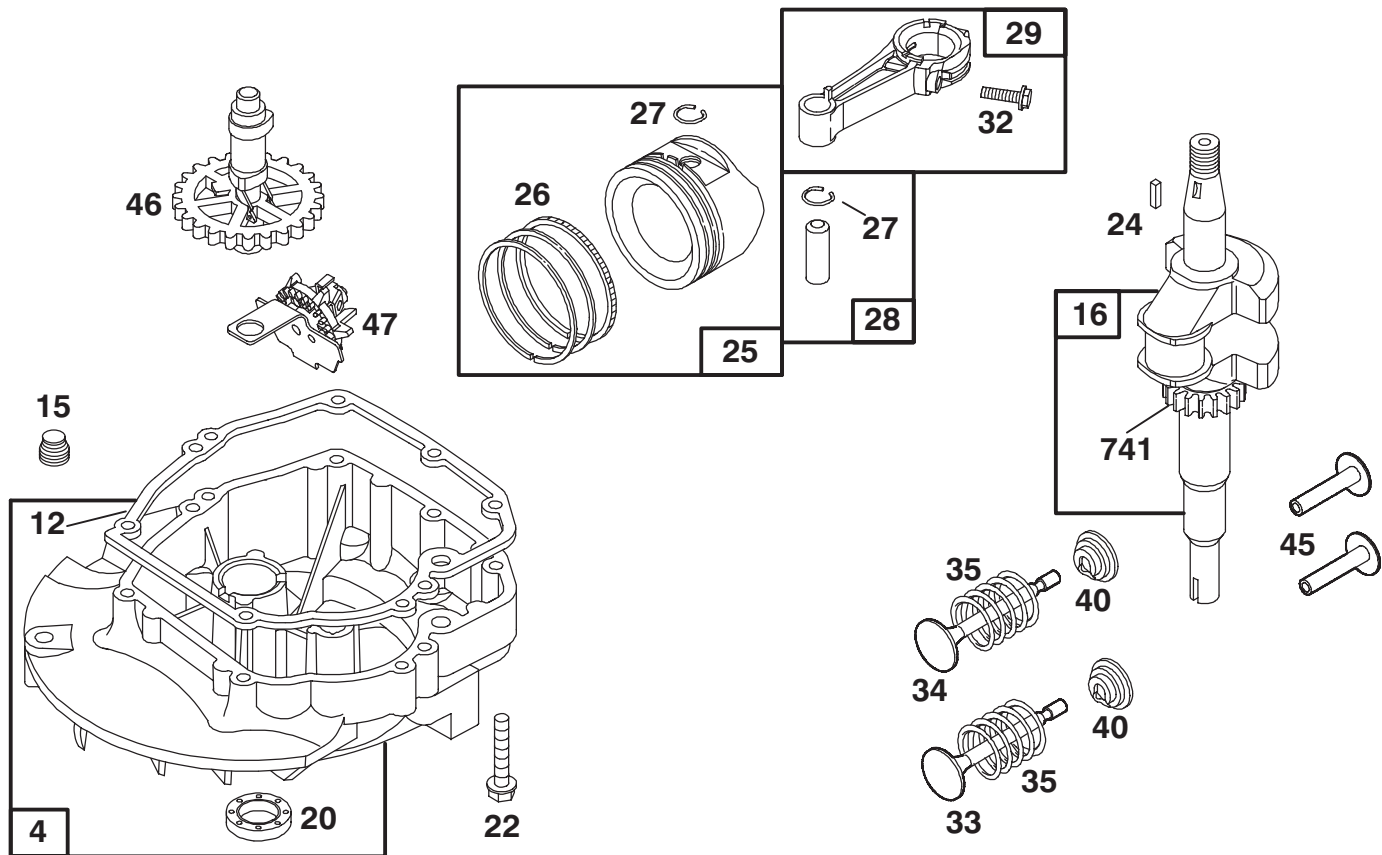
Assemblies include all parts shown in frames.

ENGINE BRIGGS & STRATTON MODEL 12H802-0658-01

Ref. No.	Part No.	Description	No. Used
1	493260	Cylinder Assembly	1
2	293708	Bushing – Cylinder	1
★3	299819	Seal – Oil	1
5	214368	Head – Cylinder	1
★7	272916	Gasket – Cylinder Head	1
8	495786	Breather – Valve Chamber	1
★9	272481	Gasket – Breather	1
★9A	272238	Gasket – Baffle Plate	1
10	94650	Screw – Breather Mtg.	1
11	231933	Tube – Breather	1
13	94876	Screw – Cylinder Head	1
★51	272199	Gasket – Intake Elbow	1
54	94526	Screw – Intake Elbow Mtg.	1
227	492349	Lever Assembly – Gov.	1
230	67072	Washer – Gov. Crank	1
284	94511	Screw – Hex. Head	1
306	224324	Shield – Cylinder	1
307	94515	Screw – Hex. Head	1
337	802592	Plug – Spark	1

Ref. No.	Part No.	Description	No. Used
383	89838	Wrench – Spark Plug	1
523	495264	Cap With Dipstick – Oil Filler	1
★524	280393	Seal – Filler Tube	1
525	495265	Tube – Oil Filler	1
562	94852	Bolt – Carriage	1
572	224328	Baffle – Cylinder	1
592	231082	Nut – Hex.	1
615	94474	Fastener	1
616	263175	Crank – Governor	1
625	497465	Tube – Fuel Intake	1
635	66538	Elbow – Spark Plug	1
★842	280966	Seal – O-Ring	1
847	495263	Oil Fill Tube Assy.	1
869	213512	Seat – Intake Valve	1
870	213513	Seat – Exhaust Valve	1
871	262001	Guide – Exhaust Valve	1
		Note: 63709 Guide – Intake Valve	1
1019	494256	Label Kit	1

★ Included in Gasket Set—Part No. 497316.



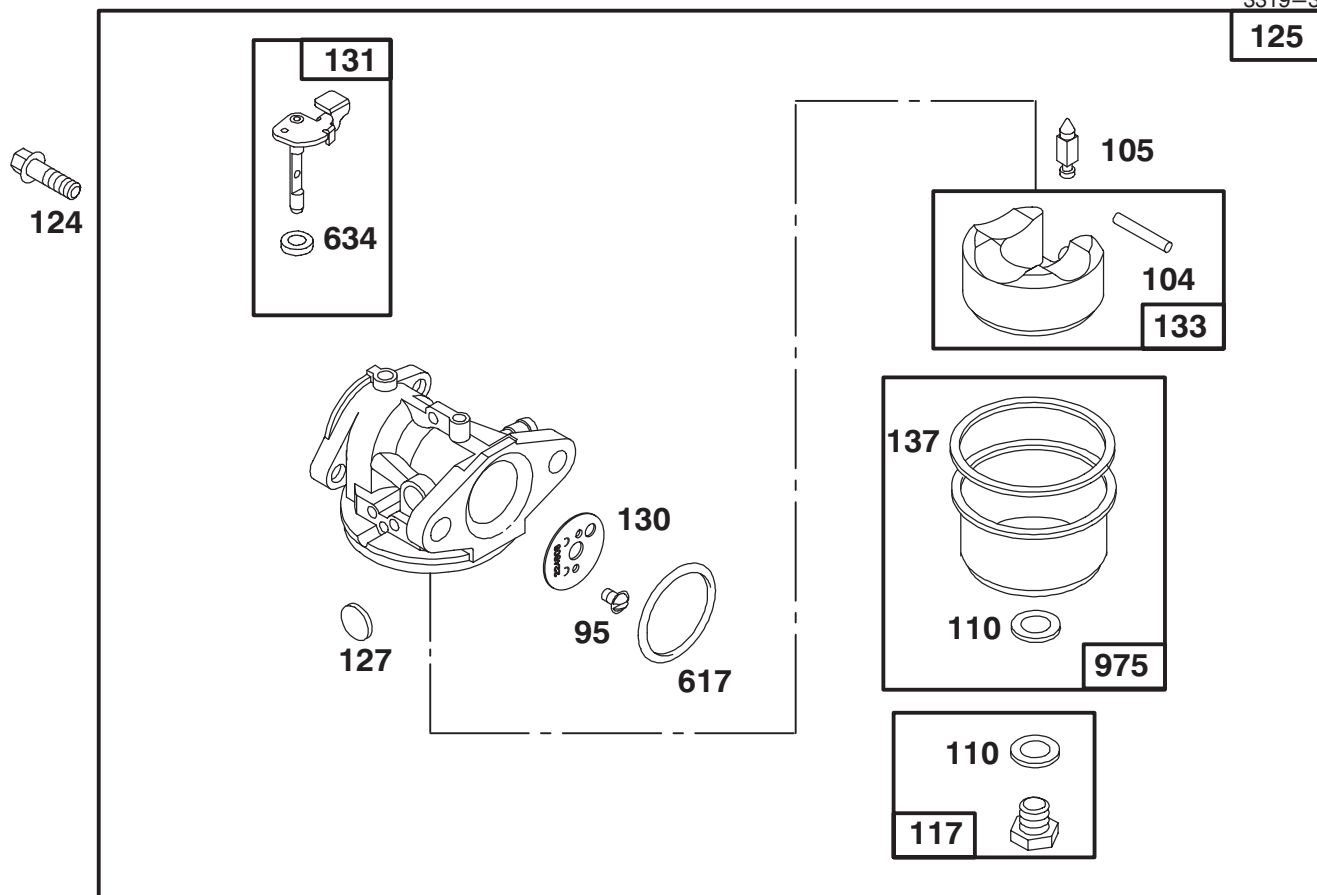
Assemblies include all parts shown in frames.

ENGINE BRIGGS & STRATTON MODEL 12H802-0658-01

Ref. No.	Part No.	Description	No. Used
4	493279	Sump – Engine	1
★12	272198	Gasket – Crankcase	1
15	94880	Plug – Oil Drain	1
16	494546	Crankshaft	
		Note: Order 94388 For Timing Gear Key.	1
★20	399781	Seal – Oil	1
22	94220	Screw – Hex. Head	1
		Note: 94612 Screw – Hex. Head (One (1) Used in Hole Nearest Breather)	1
24	222698	Key – Flywheel	1
25	493262	Piston Assy. (Standard)	1
	493385	Piston Assy. (.010" O.S.)	1
	493386	Piston Assy. (.020" O.S.)	1
	493387	Piston Assy. (.030" O.S.)	1
26	493261	Ring Set (Standard)	1
	493388	Ring Set (.010" O.S.)	1
	493389	Ring Set (.020" O.S.)	1
	493390	Ring Set (.030" O.S.)	1

Ref. No.	Part No.	Description	No. Used
27	26026	Lock – Piston Pin	1
28	298909	Pin – Piston (Standard)	1
	298908	Pin – Piston (.005" O.S.)	1
29	490566	Rod Assembly – Connecting	1
		Note: For Connecting Rod With .020" Undersize Crankpin Bearing – Order No. 490743.	1
32	94699	Screw – Connecting Rod	1
33	262651	Valve – Exhaust	1
34	262652	Valve – Intake	1
35	262224	Spring – Valve	1
40	93312	Retainer – Valve Spring	1
45	262204	Tappet – Valve	1
46	498275	Gear – Cam	1
47	493737	Slinger – Oil	1
741	262598	Gear – Timing	1

★ Included in Gasket Set—Part No. 497316.



Assemblies include all parts shown in frames.

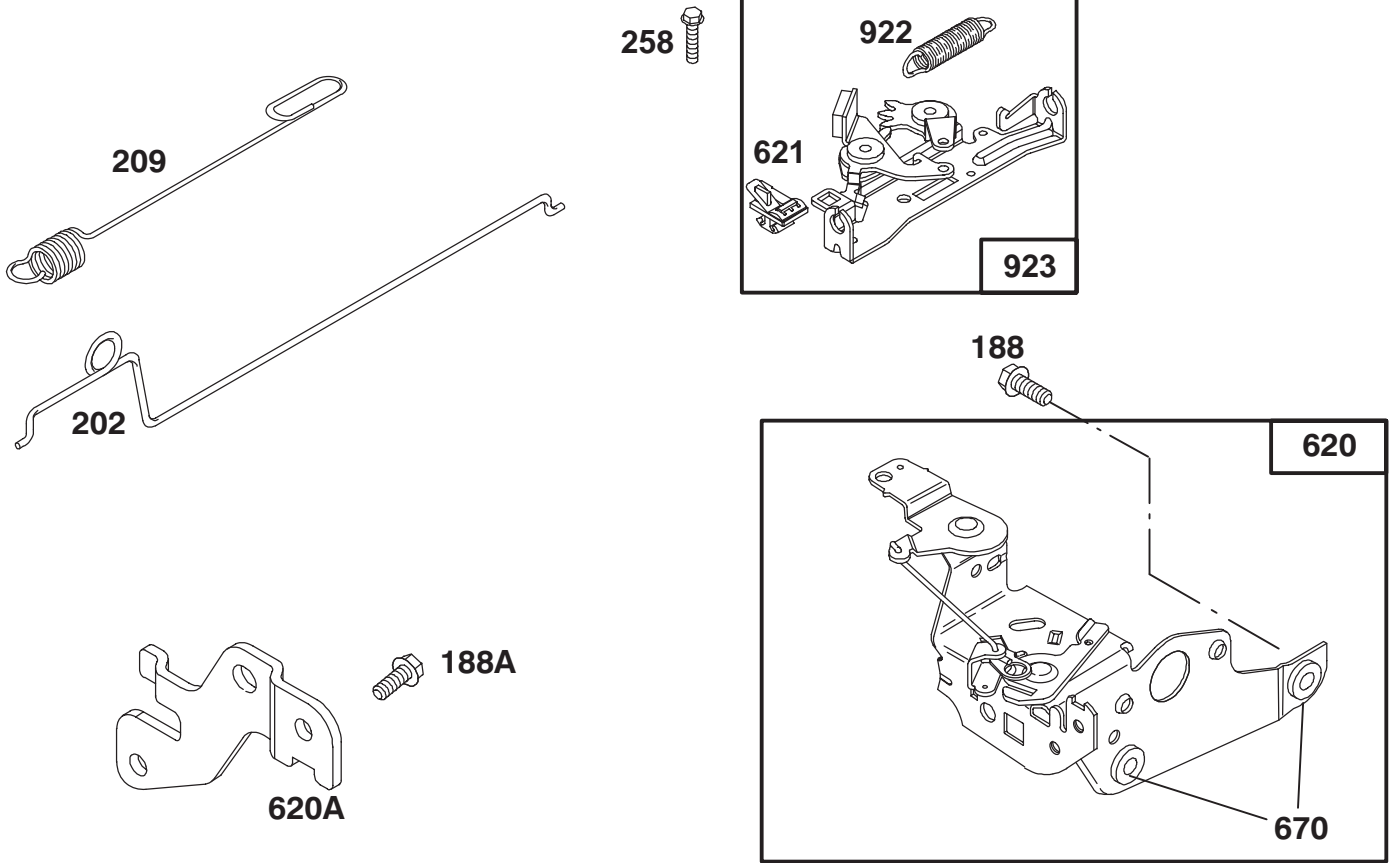
ENGINE BRIGGS & STRATTON MODEL 12H802-0658-01

Ref. No.	Part No.	Description	No. Used
95	94098	Screw – Throttle Valve Mtg.	1
●104	231371	Pin – Float Hinge	1
●105	398188	Valve – Inlet (Includes Seat)	1
◆◆110		Gasket–Sealing (Sold in Kit Only)	1
117	494870	Jet – Main (Std.) Note: 497315 Jet – Main (High Altitude)	1
124	94840	Screw – Carburetor Mtg.	1
125	498170	Carburetor	1

Ref. No.	Part No.	Description	No. Used
●127		Plug – Welch (Sold in Kit Only)	1
130	224908	Valve – Throttle	1
131	493267	Shaft – Throttle	1
133	398187	Float Assy. – Carburetor	1
◆◆137		Gasket – Bowl (Sold in Kit Only)	1
◆◆617	270344	Seal – Fuel Intake Tube	1
◆◆634		Washer–Shaft (Sold in Kit Only)	1
975	493640	Bowl Assy. – Carburetor	1

● Included in Carburetor Kit—Part No. 498260.

◆ Included in Carburetor Gasket Set—Part No. 498261.



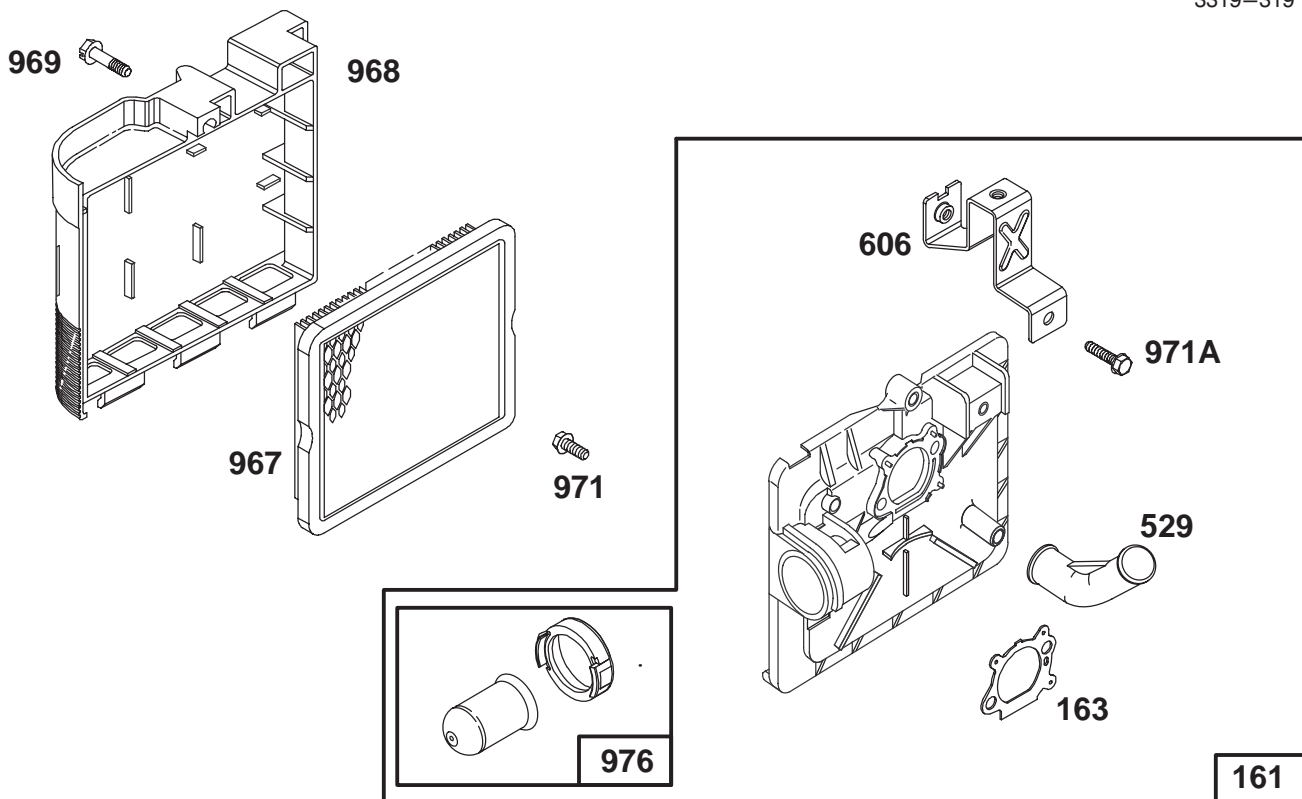
Assemblies include all parts shown in frames.

ENGINE BRIGGS & STRATTON MODEL 12H802-0658-01

Ref. No.	Part No.	Description	No. Used
188	94644	Screw – Hex. Head	1
188A	94874	Screw – Hex. Head	1
202	262579	Link – Governor	1
209	263046	Spring – Governor	1
258	94512	Screw – Hex. Head	1
620	497203	Bracket – Carburetor	1

Ref. No.	Part No.	Description	No. Used
620A	225152	Bracket – Control	1
621	396847	Switch – Stop	1
*670	493823	Spacer – Bracket	1
		Note: Includes Two.	
922	262640	Spring – Brake	1
923	493442	Brake Assembly	1

* Included in Gasket Set – Part No. 497316.



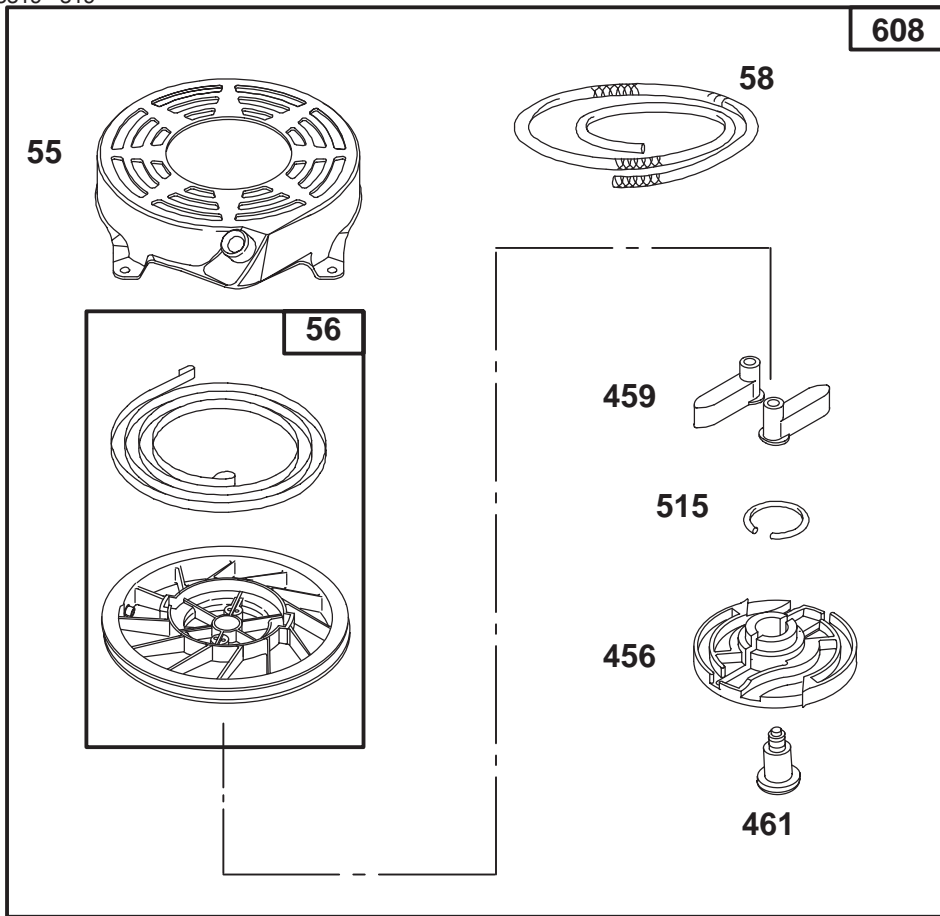
Assemblies include all parts shown in frames.

ENGINE BRIGGS & STRATTON MODEL 12H802-0658-01

Ref. No.	Part No.	Description	No. Used
161	496116	Base – Air Cleaner	1
★163	272653	Gasket – Air Cleaner	1
529	281299	Grommet – Breather	1
606	224815	Strap – Bracket	1
967	491588	Filter – Air	1

Ref. No.	Part No.	Description	No. Used
968	281340	Cover – Air Cleaner	1
969	94872	Screw – Cover Mtg.	1
971	94873	Screw – Air Cleaner	1
971A	94749	Screw – Hex. Head	1
976	496115	Primer–Carburetor	1

★ Included in Gasket Set—Part No. 497316.

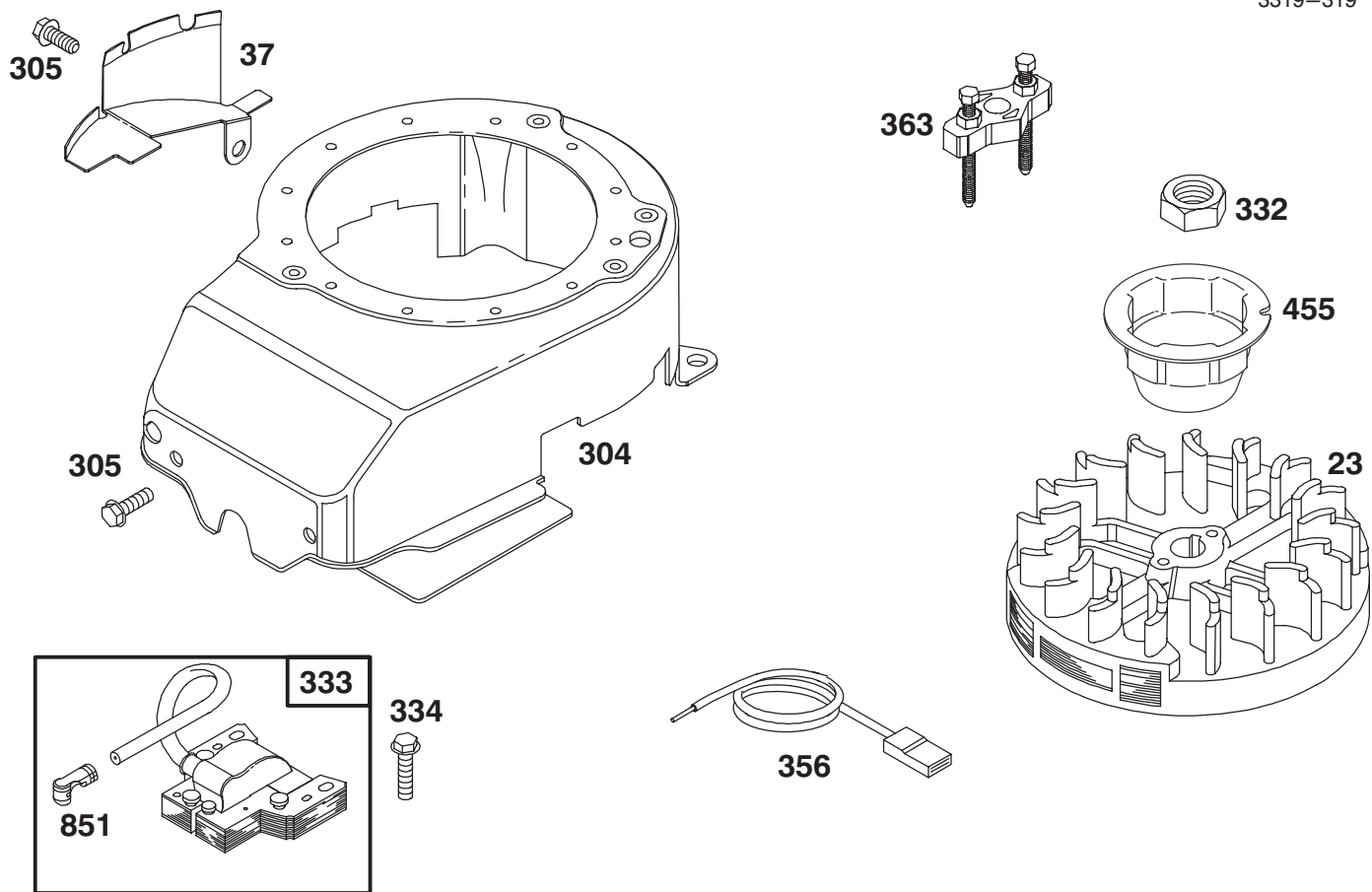


Assemblies include all parts shown in frames.

ENGINE BRIGGS & STRATTON MODEL 12H802-0658-01

Ref. No.	Part No.	Description	No. Used
55	497440	Housing – Rewind Starter	1
56	498144	Pulley – Rewind Starter	1
58	280399	Rope – Rewind Starter (Cut to Required Length)	1
59	224467	Insert – Starter Grip	1
60	493926	Handle – Rewind Starter	1
456	281503	Retainer – Rewind Starter	1
459	281505	Pawl – Starter	1

Ref. No.	Part No.	Description	No. Used
461	94943	Pin – Starter	1
515	263073	Spring – Torsion	1
608	497680	Starter Assy. – Rewind Includes: 94904 Screw – Hex. Head 94908 Nut – Hex.	1 1 1

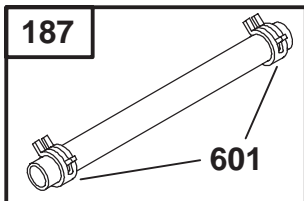
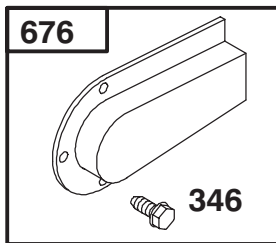
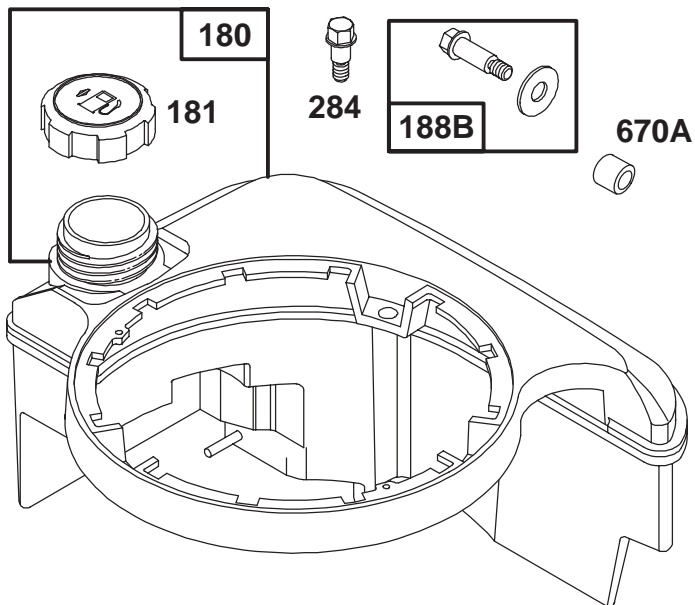
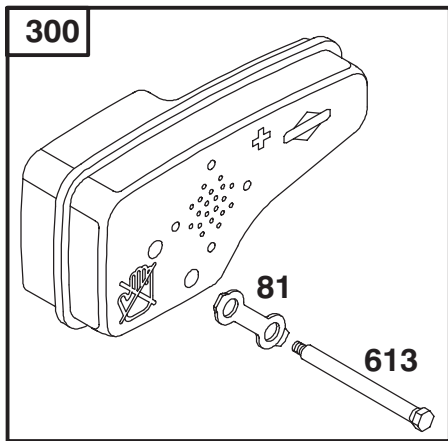


Assemblies include all parts shown in frames.

ENGINE BRIGGS & STRATTON MODEL 12H802-0658-01

Ref. No.	Part No.	Description	No. Used
23	492177	Flywheel	1
37	224511	Guard - Flywheel	1
304	493293	Housing - Blower	1
305	94744	Screw - Sem	1
332	94877	Nut - Flywheel	1
333	802574	Armature - Magneto	1

Ref. No.	Part No.	Description	No. Used
334	94731	Screw - Sem	1
356	398808	Wire - Ground	1
363	19069	Flywheel Puller	1
455	225121	Cup - Starter	1
851	493880	Terminal - Ignition Cable	1



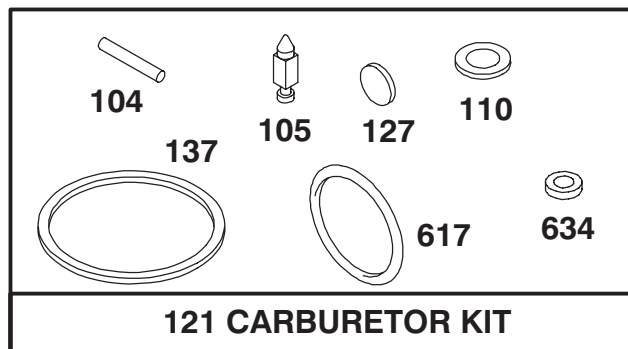
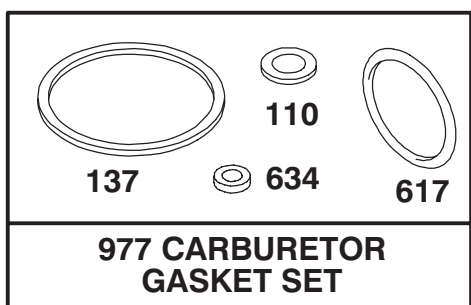
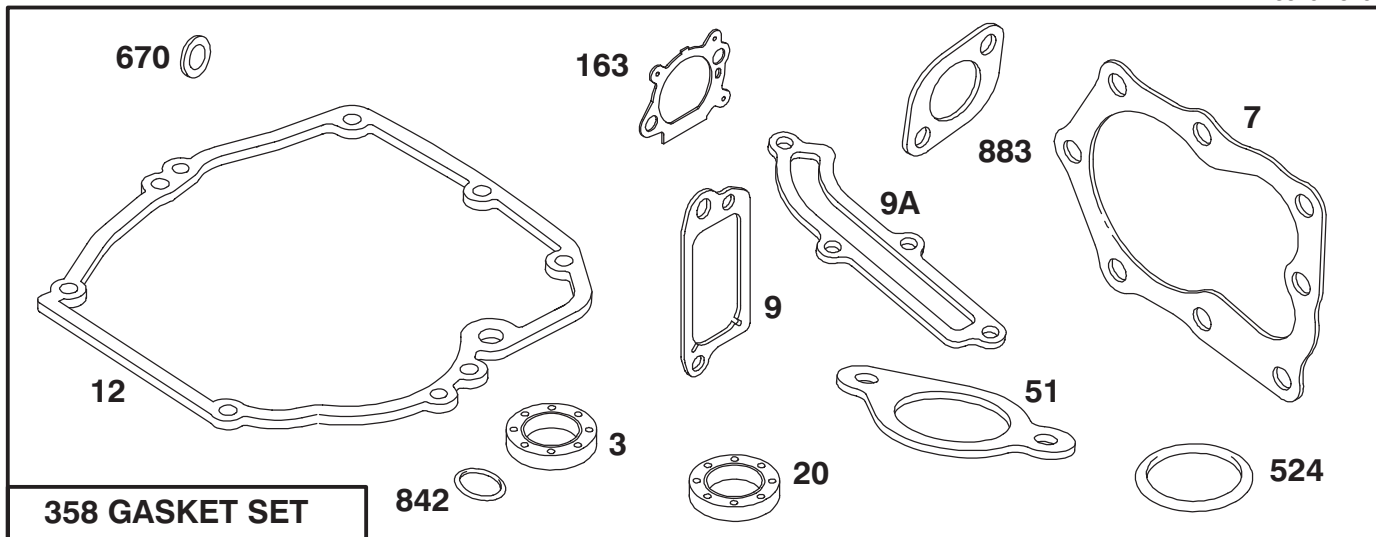
Assemblies include all parts shown in frames.

ENGINE BRIGGS & STRATTON MODEL 12H802-0658-01

Ref. No.	Part No.	Description	No. Used
81	223664	Lock – Muffler Screw	1
180	495224	Tank Assembly – Fuel	1
181	397974	Cap Assy. – Fuel	1
187	492790	Hose – Fuel	1
188B	398540	Screw – Tank Mounting	1
284	94511	Screw – Shoulder	1
300	496106	Muffler – Exhaust	1

Ref. No.	Part No.	Description	No. Used
346	94896	Screw – Hex. Head	1
601	93053	Clamp – Hose	1
613	94231	Screw – Shoulder	1
670A	280512	Spacer – Fuel Tank	1
676	493871	Deflector – Muffler	1
★883	272253	Gasket – Exhaust	1

★ Included in Gasket Set—Part No. 497316.



Assemblies include all parts shown in frames.

ENGINE BRIGGS & STRATTON MODEL 12H802-0658-01

Ref. No.	Part No.	Description	No. Used
★3	299819	Seal – Oil	1
★7	272916	Gasket – Cylinder Hd.	1
★9	272481	Gasket – Breather	1
★9A	272238	Gasket – Baffle Plate	1
★12	272198	Gasket – Crankcase	1
★20	399781	Seal – Oil	1
★51	272199	Gasket – Intake Elbow	1
●104	231371	Pin – Float Hinge	1
●105	398188	Valve – Inlet (Includes Seat)	1
◆110		Gasket – Sealing (Sold in Kit Only)	1
121	498260	Carburetor Kit	1
●127		Plug – Welch (Sold in Kit Only)	1

Ref. No.	Part No.	Description	No. Used
◆137		Gasket – Bowl (Sold in Kit Only)	1
★163	272653	Gasket – Air Cleaner	1
358	497316	Gasket Set	1
★524	280393	Seal – Filler Tube	1
◆617	270344	Seal – Fuel Intake Tube	1
◆634		Washer – Shaft (Sold in Kit Only)	1
★670	493823	Spacer – Bracket Note: Includes Two.	1
★842	280966	Seal – O-Ring	1
★883	272253	Gasket – Exhaust	1
977	498261	Gasket Set – Carburetor	1

● Included in Carburetor Kit—Part No. 498260.

◆ Included in Carburetor Gasket Set—Part No. 498261.

★ Included in Gasket Set—Part No. 497316.

Toro Part Number Index

Part No.	Page No.	Ref. No.	Qty.	Description
605120	1	12	1	Grommet
610358	3	17	2	Nut—Lock
614426	3	11	2	Washer—Stepped
614447	3	2	2	Spacer—Axle Shaft
614596	7	18	1	Gear — 34 Tooth
614637	1	27	2	Bracket—Wheel Height Adj
614650	1	24	2	Bolt—Shoulder
614668	7	2	1	Cover — Gear Case
614672	1	25	2	Bolt—Shoulder
614673	1	13	1	Spacer
614687	1	22	2	Spring Arm—Front
614696	7	4	1	Shaft — Intermediate
16-9269	1	1	1	Cover—Recycling
16-9279	2	23	1	Deck—21in Steel Sp
19-4050	4	20	2	Knob
26-0670	2	20	1	Bolt—Blade
33-0441	5	13	1	Cover — Door
36-4780	7	17	2	Washer — Thrust
36-4791	7	5	2	Washer
38-7820	7	15	1	Bearing — Ball
39-5770	2	28	1	Decal—Danger
40-1940	1	26	2	Washer
46-5520	4	11	1	Lever—Traction
46-8090	5	6	2	Screw — Tapping
46-8091	6	6	2	Screw — Tapping
49-2040	7	1	4	Screw — Taptite
49-2040	1	9	1	Screw—HH
55-3760	7	3	1	Pinion — 15 Tooth
60-8750	7	6	2	Bushing
60-8840	7	12	2	Pulley — Half
60-8850	7	9	2	Bushing — Output
60-8890	7	16	1	Gear — Bevel Pinion
62-6660	7	11	1	Spacer
62-7540	2	15	1	Retainer—Blade
62-7550	2	16	1	Pulley—Driver
65-2720	3	5	4	Ring—Retaining
65-4710	3	6	2	Ring—Friction
65-4720	3	13	2	Spring—Compression
65-4730	3	16	2	Washer—Thrust
65-4740	3	4	4	Washer—Thrust
65-4750	3	14	2	Gear—Pinion
65-4760	3	15	2	Washer
65-5100	6	5	1	Handle — Hood
66-6040	3	7	1	Key—Rocking
66-6050	3	8	1	Key—Rocking
82-8550	2	10	1	Shield—Muffler
85-7060	1	4	1	Decal—Danger
86-9671	4	2	1	Guide—Rope
88-1090	5	4	2	Spring — Door
88-1800	5	12	1	Latch — Door
88-3360	5	2	1	Decal — Discharge
92-1004	3	18	2	ASM—Spring Arm
92-1008	1	21	4	Knob—Height Adjust
92-1057	3	10	2	Bolt—Shoulder
92-1616	1	11	1	Screw
92-1624	2	14	3	Screw—Engine
92-2260	4	19	2	Screw—Handle
92-2280	4	8	1	Decal—Instruction
92-2289	2	9	1	Plate—Logo
92-2292	4	6	1	Decal—Instruction
92-2298	4	12	1	Washer—Spring
92-2299	4	15	1	Lever—Shift

*Not Illustrated

Toro Part Number Index (cont.)

Part No.	Page No.	Ref. No.	Qty.	Description
92-2914	1	17	1	Decal-HOC
92-2915	1	16	1	Decal-HOC
92-3132	4	9	1	Bolt-Shoulder
92-3133	4	10	1	Spacer-Lever
92-3135	4	5	1	Bar-Control
92-4881	1	33	2	Plate-Height Adjust
92-4890	1	28	2	Washer
92-7727	7	10	1	Gearcase
92-7746	3	3	2	ASM-Hgt Adj Arm
92-8647	1	19	1	Shield-Trailing
92-9590	3	9	2	ASM-Wheel
92-9591	1	23	2	ASM-Wheel
93-0208	2	21	1	Guide-Belt
93-0209	1	7	1	Cover-Belt
93-0216	1	32	1	Kicker-Front
93-0217	2	12	1	Kicker-Rear
93-0218	2	22	1	Kicker-Side
93-0219	2	18	1	Accelerator
93-0222	1	31	1	Baffle-Front
93-0223	2	13	1	Baffle-Rear
93-0228	1	10	1	Brkt-Belt Guide
93-0231	1	30	2	Screw-Plastite
93-0232	3	1	1	V-Belt
93-0233	1	15	1	ASM-Brkt Handle L.H.
93-0234	1	5	1	ASM - Brkt. Handle R.H.
93-0237	4	4	1	Handle-Upper
93-0238	4	21	1	Handle-Lower
93-0239	7	7	1	Shaft - Output
93-0240	1	14	1	ASM-Transmission
93-0240	7	*	1	Gearcase Ass'y Complete
93-0241	2	17	1	Blade-Steel Deck
93-0242	5	9	4	Grommet
93-0242	1	2	4	Grommet
93-0243	2	5	1	Shroud-Qt Wedge
93-0245	2	27	1	Decal-Deck
93-0248	1	6	1	Decal-Warning
93-0250	4	17	1	Cable-Throttle/Traction
93-0251	4	18	1	Cable-Brake
93-0261	4	16	1	Curved Washer
93-0262	1	34	1	Decal-Warning
93-0264	5	3	1	Door - Discharge
93-0267	5	5	1	Plate - Discharge Chute
93-0279	6	1	1	Shield - Discharge Plug
93-0280	6	2	1	Cover - Discharge Plug
93-0340	4	7	1	Stop-Pivot
93-4196	2	26	1	Shield-Grass
93-7380	4	23	1	Anchor-Cable
93-8470	2	2	1	Screw-Clamp (P/W Eng)
94-1609	3	12	2	Cover-Wheel
94-1683	5	1	1	Chute - Discharge Ass'y
95-1657	2	7	1	Decal-Recoil
2210-249	2	3	1	Clamp-Casing (P/W Eng)
2210-316	2	6	1	Rope-Stop (P/W Eng)
321-51	4	3	1	Bolt-Hex
322-3	1	18	6	Screw-HH
3253-22	2	19	1	Washer-Lock
3256-24	7	13	1	Washer
3256-49	4	13	1	Washer-Flat
3285-19	7	8	2	Pin - Groove
3290-378	4	22	1	Tie-Cable
3296-2	4	14	1	Nut Lock
3296-2	1	36	1	Nut Lock

*Not Illustrated

Toro Part Number Index (cont.)

Part No.	Page No.	Ref. No.	Qty.	Description
3296-5	7	14	1	Nut
3296-29	1	20	6	Nut-Lock
3296-39	1	29	2	Nut-Lock
3296-73	4	1	1	Nut-Lock
32104-122	6	3	3	Screw - PH
32105-27	1	35	1	Screw-HWH
32144-4	1	3	4	Screw-TAP
32144-32	5	10	2	Screw - Plasitc
32144-73	2	11	3	Screw-HWHTF
32144-85	3	19	2	Screw-HH
32144-111	5	7	1	Screw - PPH
32144-111	2	1	2	Screw - PPH
32144-119	1	8	1	Screw-Thrd Frm
32144-121	2	8	2	Screw

