



WHEEL HORSE[®]

Lawn And Garden Tractor

36" TILLER

Model No. 79271- 7900001 & Up

Parts Catalog

ORDERING REPLACEMENT PARTS

To order replacement parts, please supply: the part number, the quantity, and the description of each part desired.

Contents

Description	Page	Description	Page
Guard, Shield, Gear case & Tines	1	Mid Hitch Idler Asm	3
Hitch, Drive & Idler Pulleys	2	Rear Axle Mount Hitch	4

Part Description Abbreviations

Part descriptions in this catalog may include the following abbreviations.

Abbreviation	Meaning	Abbreviation	Meaning
AR	as required	HWHTF	hex washer head thread forming
ASM	assembly	INC	incorporated
CARR	carriage	LH	left hand
DEG	degrees	PH	pan head
FH	flat head	PPH	Phillips pan head
GA	gauge	PTO	power take off
HF	hex flange	RH	right hand
HFV	hex flange washer	SFH	slotted fillister head
HH	hex head	SH	square head
HHF	hex head flange	SHWH	slotted hex washer head
HHST	hex head self tapping	SPH	slotted pan head
HJ	hex jam	STD	standard
HOC	height-of-cut	TAP	self tapping
HS	hex socket	TH	truss head
HSBH	hex socket button head	TTH	Torx truss head
HSFH	hex socket flat head	WH	wing head
HSH	hex socket head		
HWH	hex washer head		

Important Format Explanations

This catalog uses special formats to convey information in illustrations and parts lists. Specifically, one format is used in conjunction with service assemblies and another with quantities associated with reference numbers.

Service Assemblies

Parts within service assemblies have reference numbers in the form X:Y. X is the reference number of the service assembly and Y is a sequential number unique to each part within the service assembly.

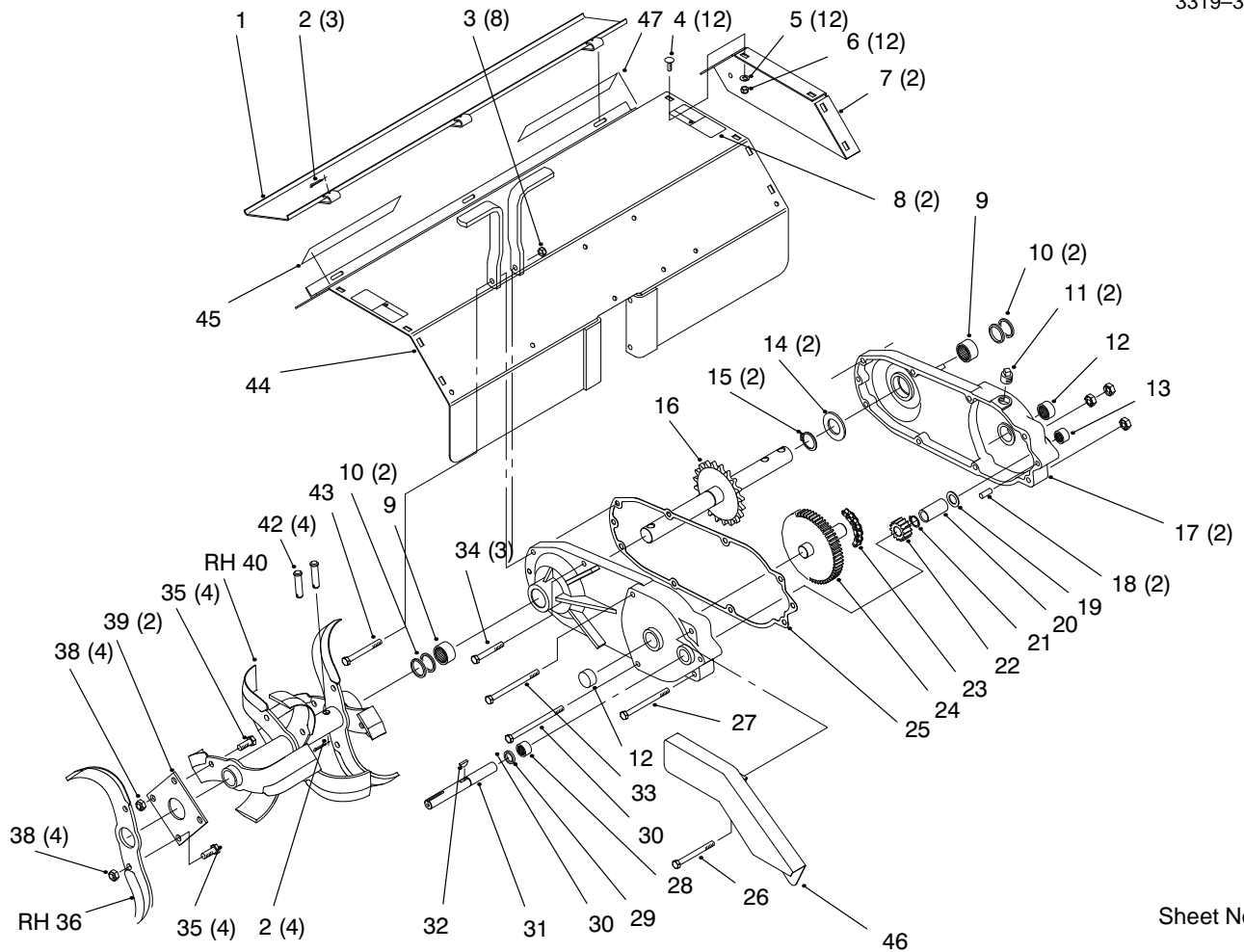
For example, a wheel assembly might be identified by reference number 6, the tire by 6:1, the valve by 6:2, and the wheel by 6:3. When you order the assembly identified by reference number 6, you receive all parts identified by reference numbers 6:1, 6:2, and 6:3. However, you may also order any part individually.

Reference numbers of this type appear in part lists and as callouts in illustrations.

Reference Numbers with Quantities

Illustrations may have a quantity in parentheses next to a reference number, in the form X (Y). X is the reference number. Y in parentheses is the quantity of the part identified by the reference number.

For example, the illustration callout 4 (2) indicates that two parts are used in that instance.

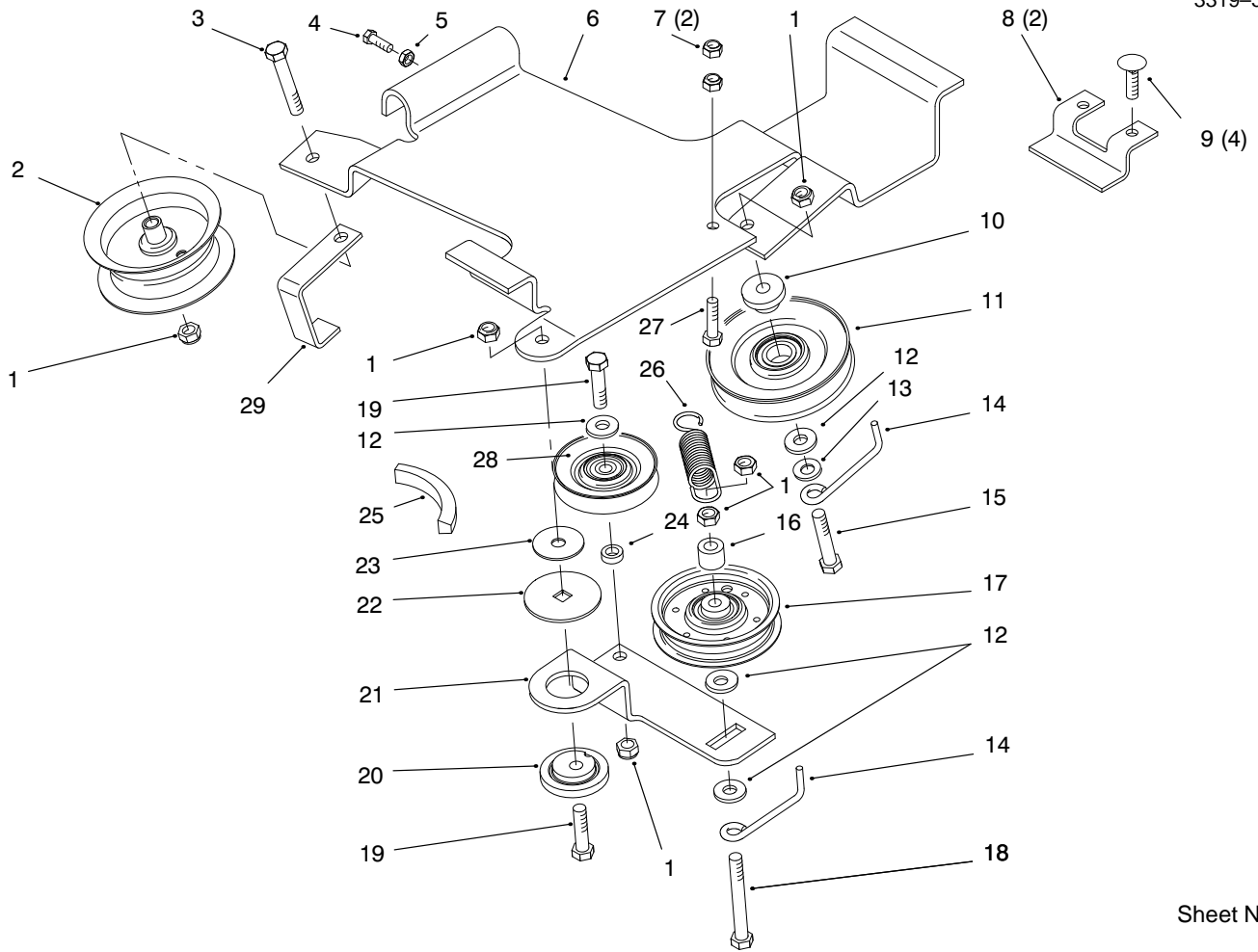


Sheet No.: 2

Guard, Shield, Gear case & Tines

Ref. No.	Part No.	Qty.	Description
1	93-1609-01	1	Panel
2	3272-11	7	Pin-Cotter
3	3296-39	8	Nut-Lock
4	3230-1	12	Bolt-CARR
5	3256-23	12	Washer-Flat
6	3296-29	12	Nut-Lock
7	93-1605-01	2	Cover-End
8	92-7112	2	Decal-Danger
9	6838	2	Bearing-Needle
10	103118	4	Seal-Oil
11	281-3	2	Plug-Pipe
12	1532	2	Bearing-Needle
13	1529	1	Bearing-Needle
14	106011	2	Washer-Flat
15	32120-33	2	Ring-Retaining
16	106009	1	Shaft And Sprocket ASM
17	93-1600-01	2	Gearcase-Half
18	32121-41	2	Pin-Roll
19	1535	1	Washer-Thrust
20	83-3340	1	Tube-Spacer
21	32120-72	1	Ring-Retaining
22	3528	1	Gear-Pinion
23	6848	1	Chain-Sprocket
24	106007	1	Shaft And Sprocket ASM

Ref. No.	Part No.	Qty.	Description
25	83-3330	1	Gasket-Transmission
26	323-42	1	Screw-HH
27	323-23	1	Screw-HH
28	1540	1	Bearing-Needle
29	100441	1	Seal-Oil
30	323-25	1	Screw-HH
31	104387	1	Shaft-Input
32	3257-5	1	Key-Woodruff
33	323-21	1	Screw-HH
34	323-13	3	Screw-HH
35	324-4	8	Screw-HH
36	92-1653-03	1	Tine-RH
37	93-1604-03	1	Tine-LH
38	3296-48	8	Nut-Lock
39	93-1601-03	2	Plate-Mounting
40	93-1602-03	1	Tine-RH
41	93-1603-03	1	Tine-LH
42	9208	4	Pin-Clevis
43	323-15	1	Screw-HH
44	92-6514-01	1	Shield w/ Safety Decal
45	92-8748	1	Decal-Attachment
46	93-9279	1	Guard-Tiller
47	94-9158	1	Decal-Workhorse



Sheet No.: 4

Mid Hitch Idler Asm

Ref. No.	Part No.	Qty.	Description
1	3296-39	6	Nut-Lock
2	49-6980	1	Pulley-Idler
3	323-11	1	Screw
4	3235-20	1	Screw
5	3218-1	1	Nut-Jam
6	92-7033-03	1	Rack-Tiller Drive
7	3296-29	2	Nut-Lock
8	93-1388-03	2	Bracket-Rack Mounting
9	3230-2	4	Screw-CARR
10	83-2950	1	Spacer
11	92-7103	1	Pulley-Idler
12	9202414	4	Washer-Flat
13	3256-24	1	Washer-Flat
14	79-0390	2	Guide-Belt
15	323-10	1	Screw-HH
16	108326	1	Spacer-Pivot
17	92-7101	1	Pulley-Flat
18	323-14	1	Screw-HH
19	323-8	2	Screw-HH
20	111418	1	Bushing
21	78-6771	1	Arm-Idler
22	111419	1	Washer-Bearing
23	9202494	1	Wash-Fender
24	93-3658	1	Spacer
25	92-7075	1	Belt-V

Ref. No.	Part No.	Qty.	Description
26	92-7149	1	Spring-Ext
27	322-6	1	Screw-HH
28	92-7102	1	Pulley-Idler
29	92-7022-01	1	Guide-Belt

Toro Part Number Index

Part No.	Page No.	Ref. No.	Qty.	Description
1005	2	16	1	Key-Square
1278	4	2	2	Washer-Shim
1529	1	13	1	Bearing-Needle
1532	1	12	2	Bearing-Needle
1535	1	19	1	Washer-Thrust
1540	1	28	1	Bearing-Needle
3528	1	22	1	Gear-Pinion
4629	2	6	1	Spring-Extension
5210	4	3	2	Washer-Shim
5618	4	4	2	Ring-Retaining
6838	1	9	2	Bearing-Needle
6848	1	23	1	Chain-Sprocket
9208	1	42	4	Pin-Clevis
100441	1	29	1	Seal-Oil
100653	2	7	1	Eyebolt
103118	1	10	4	Seal-Oil
104387	1	31	1	Shaft-Input
104524	4	21	1	Trunnion
104657	4	13	2	Handle-Latch
105474	4	19	1	Spacer
106007	1	24	1	Shaft And Sprocket ASM
106009	1	16	1	Shaft And Sprocket ASM
106011	1	14	2	Washer-Flat
108519	4	1	2	Bushing
111418	3	20	1	Bushing
111419	3	22	1	Washer-Bearing
9202204	4	18	1	Washer
9202414	3	12	4	Washer-Flat
9202494	3	23	1	Wash-Fender
9321204	4	14	2	Pin-Clevis
9335044	4	6	3	Hairpin
49-6980	3	2	1	Pulley-Idler
78-6771	3	21	1	Arm-Idler
79-0390	3	14	2	Guide-Belt
79-0400	2	13	1	Guide-Belt
79-2280	2	4	1	Clevis w/ Pins
83-2950	3	10	1	Spacer
83-3330	1	25	1	Gasket-Transmission
83-3340	1	20	1	Tube-Spacer
92-1653-01	1	36	1	Tine-RH
92-6514-01	1	44	1	Shield w/ Safety Decal
92-6713-03	4	22	1	Cover-Rear
92-6727	4	23	1	Decal-Fuel Level
92-7022-03	3	29	1	Guide-Belt
92-7023-03	4	20	1	Catch-Spring
92-7033-03	3	6	1	Rack-Tiller Drive
92-7064-03	4	5	1	Lever
92-7069	4	9	1	Rod-Lift
92-7074	2	5	1	Chain-Lift
92-7075	3	25	1	Belt-V
92-7101	3	17	1	Pulley-Flat
92-7102	3	28	1	Pulley-Idler
92-7103	3	11	1	Pulley-Idler
92-7104	2	11	1	Pulley-Idler
92-7112	1	8	2	Decal-Danger
92-7149	3	26	1	Spring-Ext
92-8748	1	45	1	Decal-Attachment
93-0345	2	15	1	Pulley
93-1388-03	3	8	2	Bracket-Rack Mounting
93-1389-03	4	12	1	Bracket-Mtg
93-1600-01	1	17	2	Gearcase-Half
93-1601-01	1	39	2	Plate-Mounting

*Not Illustrated

Toro Part Number Index (cont.)

Part No.	Page No.	Ref. No.	Qty.	Description
93-1602-03	1	40	1	Tine-RH
93-1603-03	1	41	1	Tine-LH
93-1604-03	1	37	1	Tine-LH
93-1605-01	1	7	2	Cover-End
93-1606-01	2	8	1	Bracket-Spring
93-1607-01	2	10	1	Hitch
93-1608-01	2	3	1	Plate
93-1609-01	1	1	1	Panel
93-1628	2	19	1	Decal-Belt Routing
93-3658	2	12	1	Spacer
93-3658	3	24	1	Spacer
94-9158	1	47	1	Decal-Workhorse
108326	3	16	1	Spacer-Pivot
281-3	1	11	2	Plug-Pipe
322-6	3	27	1	Screw-HH
323-8	3	19	2	Screw-HH
323-9	4	17	1	Screw-HH
323-10	3	15	1	Screw-HH
323-11	2	14	1	Screw
323-11	3	3	1	Screw
323-13	1	34	3	Screw-HH
323-14	3	18	1	Screw-HH
323-15	1	43	1	Screw-HH
323-21	1	33	1	Screw-HH
323-23	1	27	1	Screw-HH
323-25	1	30	1	Screw-HH
323-42	1	26	1	Screw-HH
324-4	1	35	8	Screw-HH
325-5	4	10	3	Screw-HH
3218-1	3	5	1	Nut-Jam
3230-1	1	4	12	Bolt-CARR
3230-1	2	2	4	Bolt-CARR
3230-2	3	9	4	Screw-CARR
3231-2	4	16	2	Screw-CARR
3235-20	3	4	1	Screw
3242-2	2	17	2	Screw Set-SH
3256-23	1	5	12	Washer-Flat
3256-24	3	13	1	Washer-Flat
3256-24	4	7	4	Washer-Flat
3257-5	1	32	1	Key-Woodruff
3272-6	4	8	1	Pin-Cotter
3272-11	1	2	7	Pin-Cotter
3296-23	4	11	3	Nut-Lock
3296-29	1	6	12	Nut-Lock
3296-29	2	1	4	Nut-Lock
3296-29	3	7	2	Nut-Lock
3296-39	1	3	8	Nut-Lock
3296-39	2	9	2	Nut-Lock
3296-39	3	1	6	Nut-Lock
3296-39	4	15	3	Nut-Lock
3296-48	1	38	8	Nut-Lock
32120-33	1	15	2	Ring-Retaining
32120-72	1	21	1	Ring-Retaining
32121-41	1	18	2	Pin-Roll