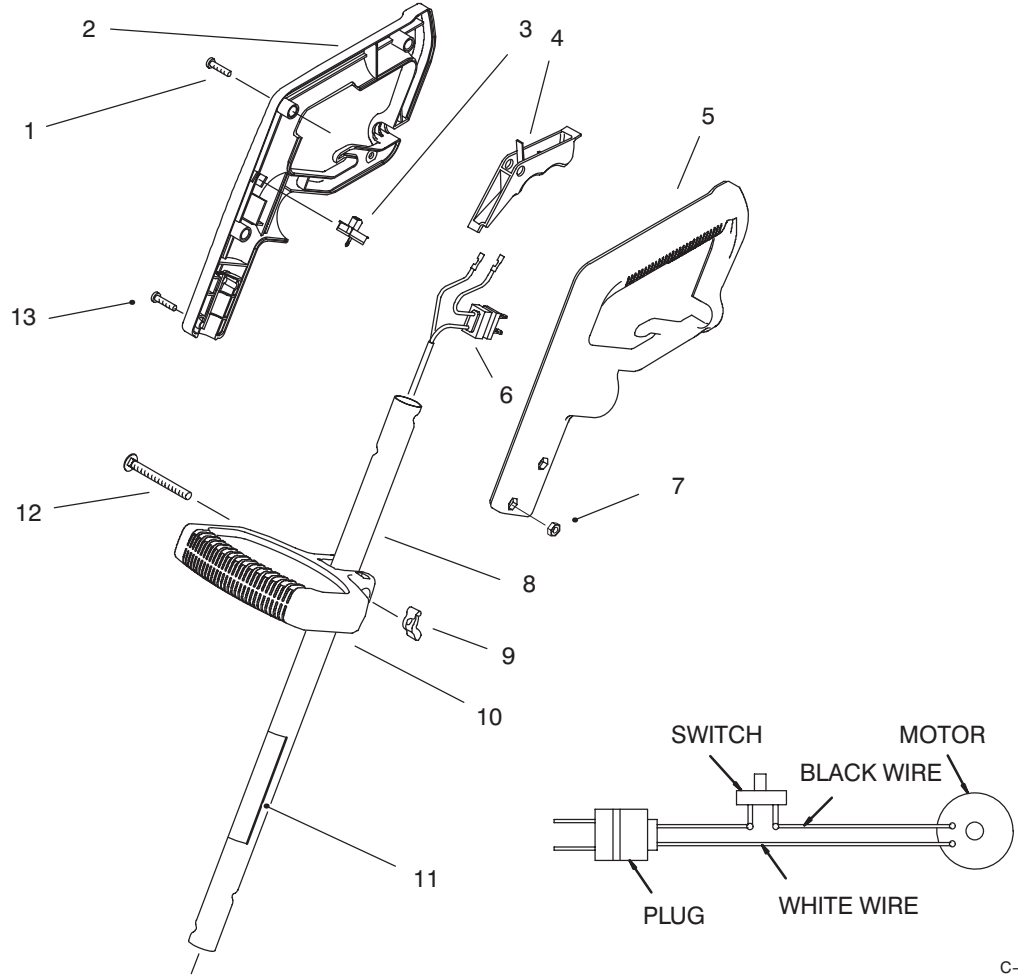




MODEL NO. 51332-7900001 & UP

PARTS CATALOG

12" ELECTRIC TRIMMER

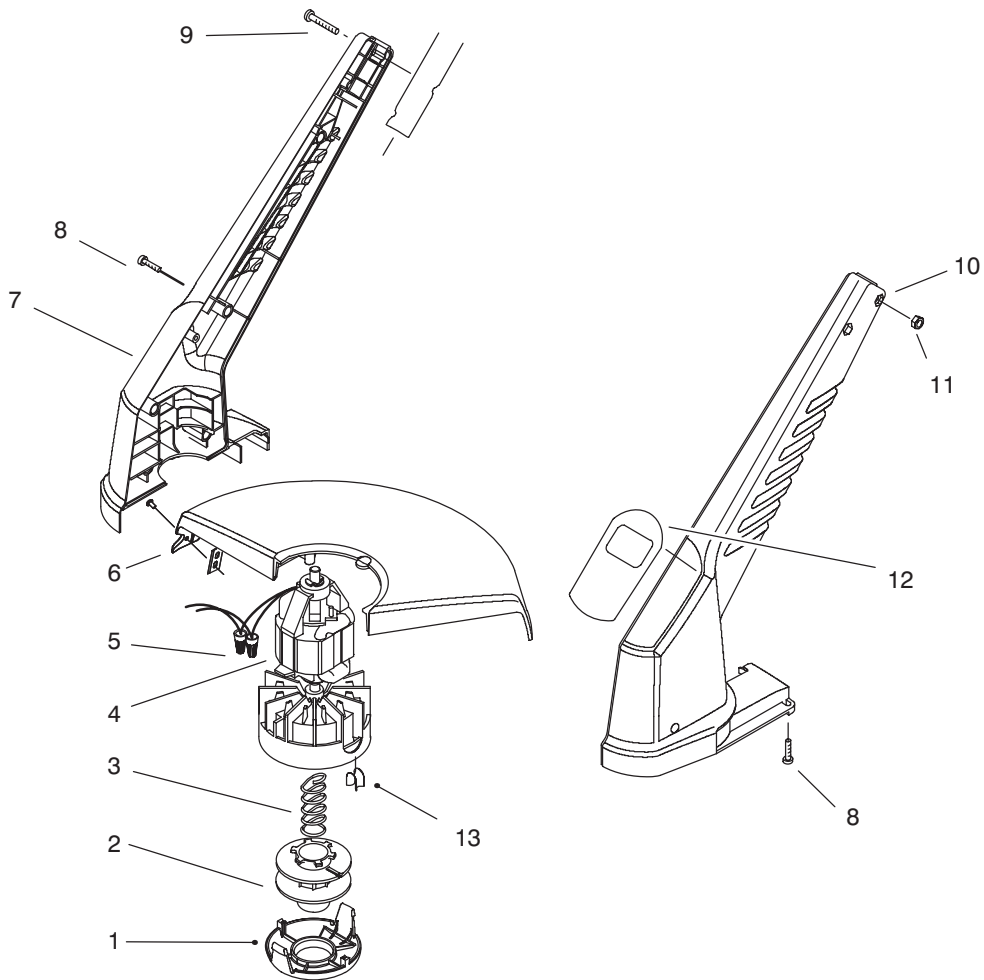


C-2331

HANDLE ASSEMBLY

| Ref. No. | Part No. | Description | No. Used |
|----------|----------|-----------------------|----------|
| 1 | 94-4496 | Screw | 4 |
| 2 | 73-8150 | Grip - Hand R.H. | 1 |
| 3 | 73-5600 | Switch - Single Speed | 1 |
| 4 | 73-8170 | Trigger | 1 |
| 5 | 73-8160 | Grip - Hand L.H. | 1 |
| 6 | 73-8380 | Harness - Wire | 1 |
| 7 | 3217-44 | Nut - Lock | 2 |

| Ref. No. | Part No. | Description | No. Used |
|----------|----------|--------------------------------|----------|
| 8 | 73-9130 | Tube Assembly (Incl. Ref. #11) | 1 |
| 9 | 32103-30 | Nut - Wing | 1 |
| 10 | 73-8310 | Handle - Mid | 1 |
| 11 | 93-4463 | Decal - Safety | 1 |
| 12 | 73-8740 | Screw - Carriage | 1 |
| 13 | 3250-52 | Screw - Pan Hd. | 2 |



C-2330

MOTOR & HOUSING ASSEMBLY

| Ref. No. | Part No. | Description | No. Used |
|----------|----------|------------------------------------|----------|
| 1 | 73-8200 | Cap | 1 |
| 2 | 73-8190 | Spool | 1 |
| 3 | 73-8220 | Spring | 1 |
| 4 | 73-9051 | Motor Assembly (Incl. Ref. #13) | 1 |
| 5 | 73-6570 | Connector - Wire Nut | 2 |
| 6 | 73-9091 | Shield - 12" | 1 |
| 7 | 73-8130 | Housing R.H. | 1 |

| Ref. No. | Part No. | Description | No. Used |
|----------|----------|--|----------|
| 8 | 94-4496 | Screw | 7 |
| 9 | 3250-52 | Screw - Pan Hd. | 2 |
| 10 | 73-8140 | Housing L.H. | 1 |
| 11 | 3217-44 | Nut - Hex | 2 |
| 12 | 73-8471 | Decal - 12" Trimmer | 1 |
| 13 | 73-8210 | Eyelet | 1 |
| * | 88175 | Spool & Line Assembly (Whole Goods) | 1 |

*Not Illustrated