



Count on it.

Parts Catalog

72in Side Discharge Mower

Groundsmaster® 300 Series

Model No. 30722—Serial No. 240000001 and Up

Ordering Replacement Parts

To order replacement parts, please supply the part number, the quantity, and the description of each part desired.

Understanding Reference Numbers

Each identified part in an illustration has a reference number. The reference number for a part also appears in the parts list, along with other information about the part.

This catalog uses two special reference number formats, one to indicate parts in a service assembly and another to indicate the quantity of a given part in an illustration.

Service Assembly Reference Numbers

Parts in service assemblies have reference numbers in the form a:b. The a represents the reference number of the entire service assembly and the b represents a sequential number unique to each part within the service assembly.

For example, a wheel assembly might be identified by reference number 6, the tire by 6:1, the valve by 6:2, and the wheel by 6:3. When you order the assembly identified by reference number 6, you receive all parts identified by reference numbers 6:1, 6:2, and 6:3. However, you may also order any part individually. Reference numbers of this type appear in illustration and in parts lists.

Reference Numbers Indicating Quantity

In an illustration, if a reference number indicates more than one part, the reference number has the form nX y. The n represents the quantity of the part, the X is the multiplication symbol, and the y represents the reference number.

For example, in an illustration, the reference number 2X 37 means that two of the parts identified by reference number 37 are indicated.

List of Abbreviations

AR: as required

ASM: assembly

BBC: blade brake control

BHTF: button head thread forming

CARR: carriage

CCW: counter clockwise

CW: clockwise

DEG: degrees

DPA: Dual Point Adjustment

ECM: electronic control module

EXT: external

FH: flat head

GA: gauge

HD: heavy-duty

HF: hex flange

HH: hex head

HHF: hex head flange

HHFTF: hex head flange thread forming

HJ: hex jam

HLH: hex lag head

HOC: height-of-cut

HSBH: hex socket button head

HSFH: hex socket flat head

HSH: hex socket head

HWH: hex washer head

HWHTF: hex washer head thread forming

HYD: hydraulic

LH: left hand

LP: Liquid Propane

NI: nylon insert

NPTF: national pipe thread fine

PFH: phillips flat head

PPH: phillips pan head

PPHTF: phillips pan head thread forming

PRH: phillips round head

PTH: phillips truss head

PTO: power-take-off

RH: right hand

ROPS: roll-over protection system

RRB: rear roller brush

SFH: slotted fillister head

SHH: slotted hex head

SHWH: slotted hex washer head

SPH: slotted pan head

SQH: square head

SRH: slotted round head

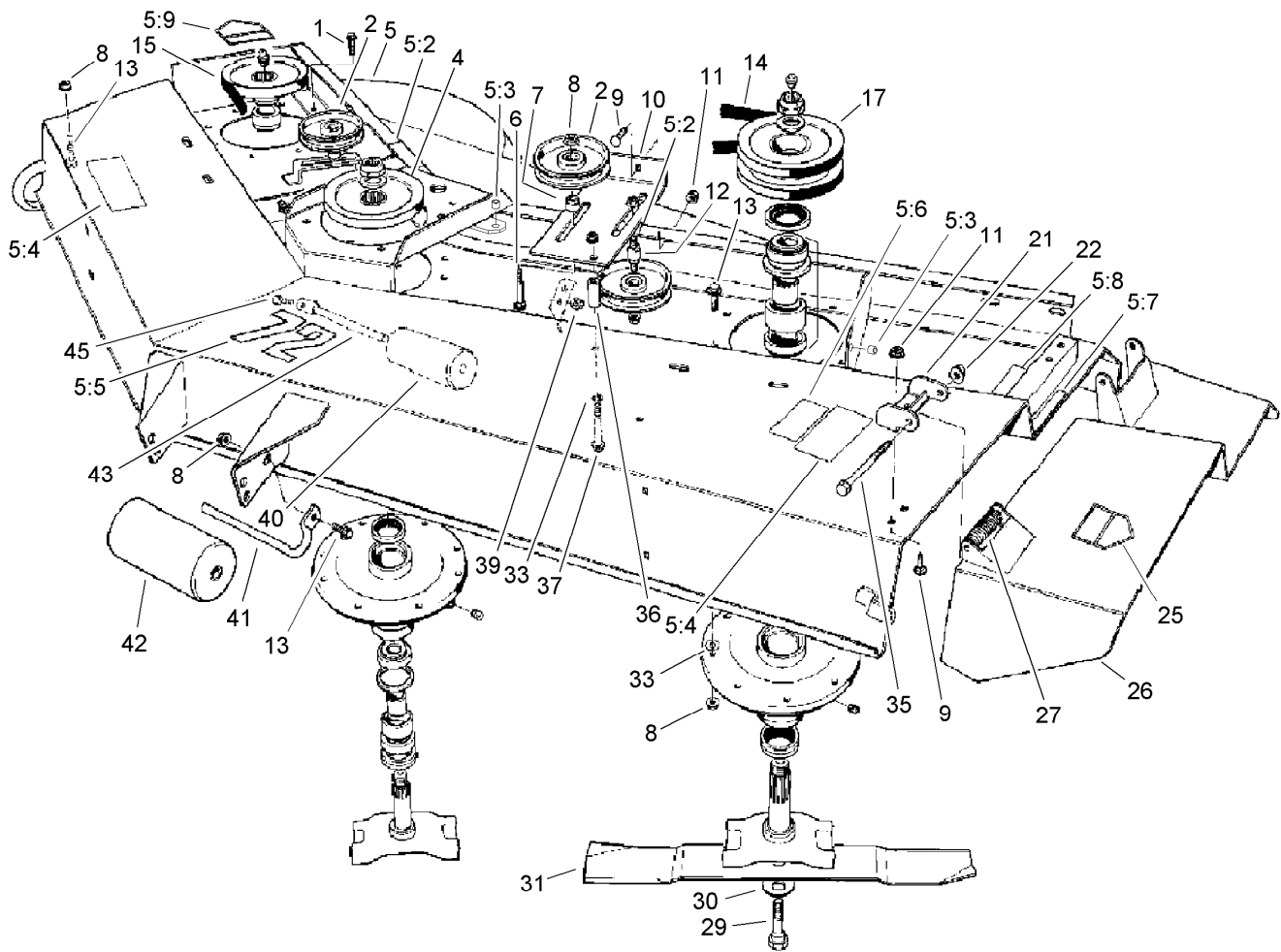
STD: standard

TAP: self tapping

TTH: torx truss head

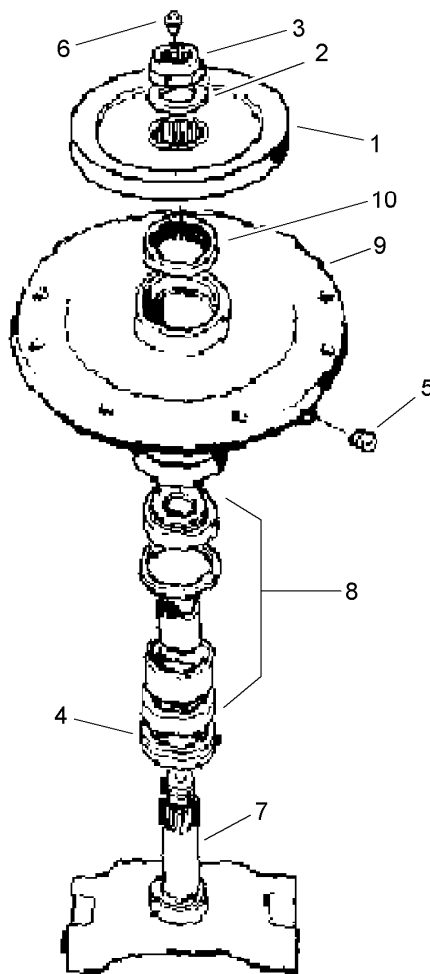
Contents

Deck Assembly	4
Center Spindle Assembly No. 95-3090.....	5
Right Hand Spindle Assembly No. 95-3095.....	6
Left Hand Spindle Assembly No. 95-3089	7
Carrier Frame Assembly	8
Gear Box Assembly No. 106-4355-03	10
Driveshaft Assembly No. 93-9996.....	11
Attachments and Accessories	12



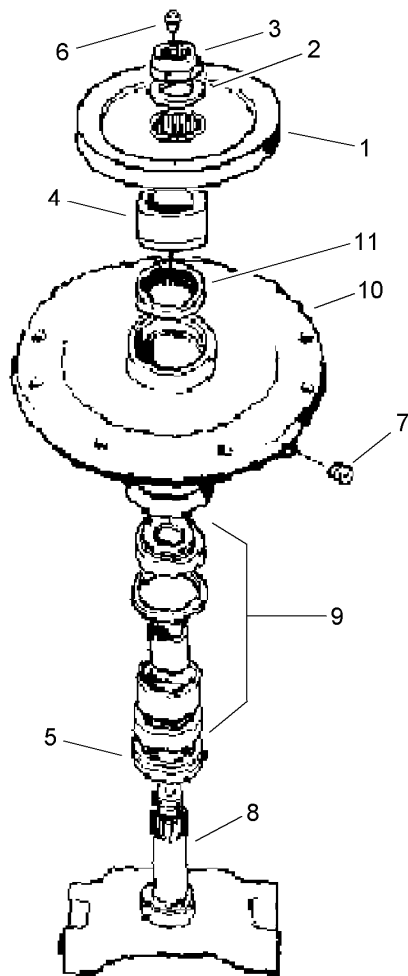
Deck Assembly

Ref.	Part Number	Qty.	Description	Ref.	Part Number	Qty.	Description
1	3234-11	4	Screw-HHF	14	21-0890	3	V-Belt
2	26-1840	3	Pulley-Idler	15	95-3095	1	RH Spindle ASM
4	95-3090	1	Center Spindle ASM	17	95-3089	1	LH Spindle ASM
5	93-7181	1	72 Inch Side Discharge Deck ASM	21	51-1530-01	2	Hinge Bracket ASM
5:2	100-6578	2	Decal-Danger	22	32128-23	2	Nut-HF
5:3	3290-469	4	Nut-Clinch	25	106-6753	1	Decal-Danger, Ce
5:4	107-2908	2	Decal-Danger, Combination	26	51-1470-01	1	Deflector
5:5	57-0280	1	Decal	27	51-1550	2	Spring
5:6	105-7844	1	Decal-Warning	29	26-1820	3	Capscrew
5:7	107-2916	1	Decal-Warning	30	26-1990	3	Washer-Belleville
5:8	93-7817	1	Decal-Torque, Blade Bolt	31	29-5530-03	3	Blade-Standard, 25 Inch, LH
5:9	106-6753	1	Decal-Danger, Ce	33	3256-24	2	Washer-Flat
6	3231-29	2	Screw-CARR	35	325-17	2	Screw-HH
7	26-1860	2	Spacer-Idler Pulley	36	26-1880	1	Spacer-Idler Mount
8	32128-21	33	Nut-HF	37	323-12	1	Screw-HH
9	3231-27	6	Screw-CARR	39	32128-25	2	Nut-HF
10	26-1870-03	1	Mount-Idler	40	36-1740	2	Roller-Deck
11	3290-357	6	Nut-HHF, Whiz	41	68-6840	1	Shaft-Roller
12	26-1850	1	Stud-Idler	42	68-6710	1	Roller
13	3234-1	24	Screw-HHF	43	62-4480	2	Rod-Roller
				45	322-4	2	Screw-HH



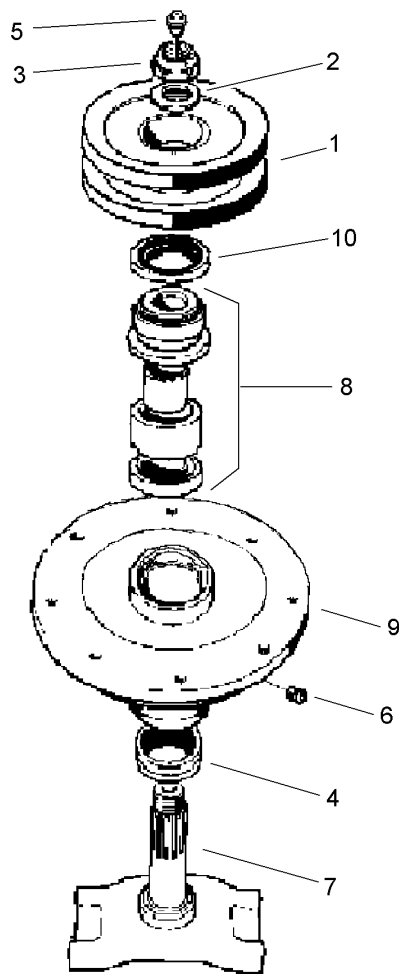
Center Spindle Assembly No. 95-3090

<i>Ref.</i>	<i>Part Number</i>	<i>Qty.</i>	<i>Description</i>
1	26-1760-03	1	Pulley ASM
2	3-8514	1	Washer-Thrust
3	3296-49	1	Nut-Lock, NI
4	253-138	2	Seal-Oil
5	285-17	2	Plug-Pipe
6	302-2	1	Fitting-Grease
7	84-5370	1	Spindle
8	49-8320	1	Bearing ASM
9	84-2080	1	Housing-Spindle, Center
10	253-154	1	Seal-Oil



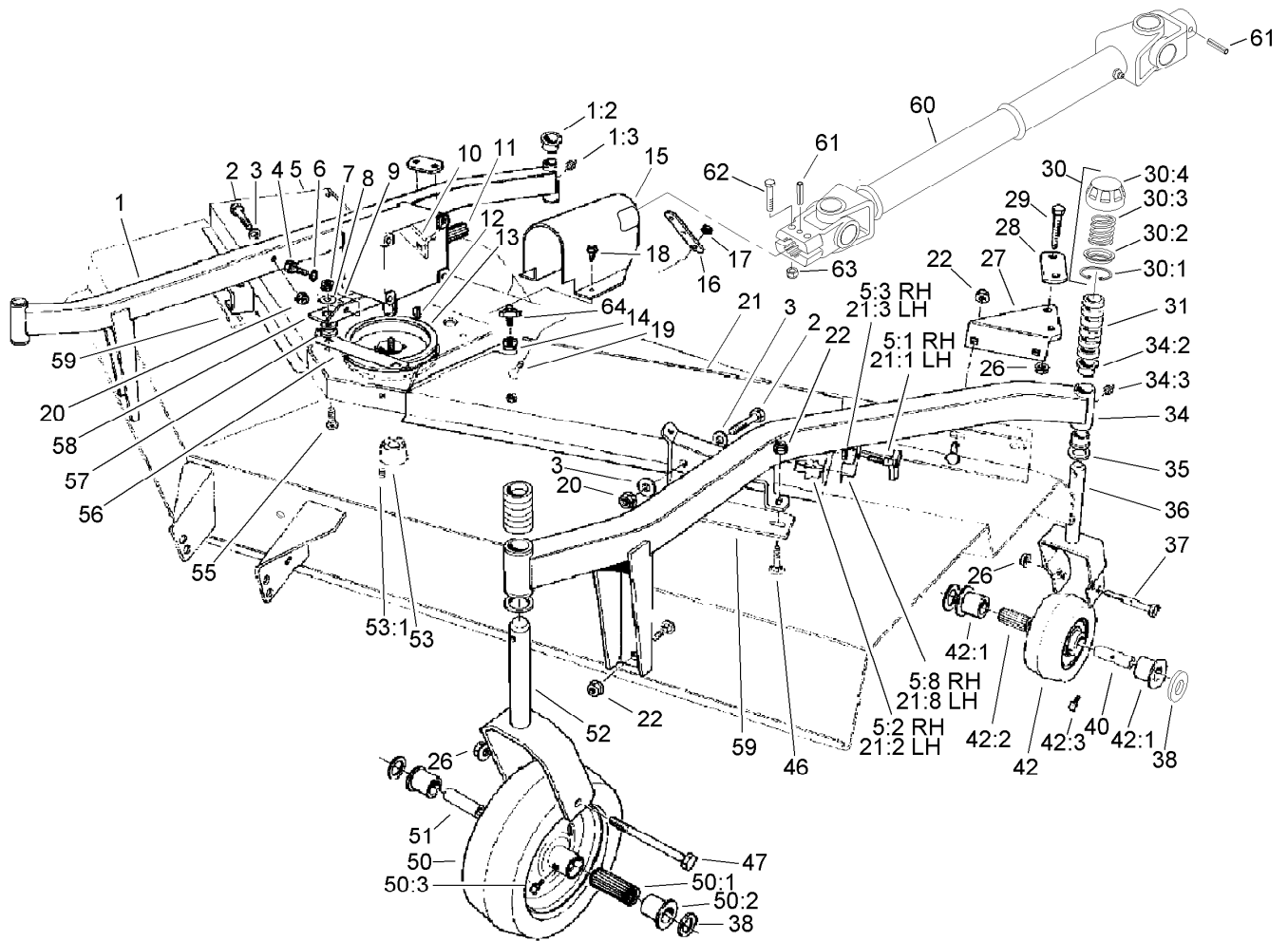
Right Hand Spindle Assembly No. 95-3095

<i>Ref.</i>	<i>Part Number</i>	<i>Qty.</i>	<i>Description</i>
1	26-1760-03	1	Pulley ASM
2	3-8514	1	Washer-Thrust
3	3296-49	1	Nut-Lock, NI
4	84-2090	1	Spacer-Spindle, RH
5	253-138	2	Seal-Oil
6	302-5	1	Fitting-Grease
7	285-17	1	Plug-Pipe
8	84-2070	1	Spindle
9	49-8320	1	Bearing ASM
10	84-2020	1	Housing-Spindle
11	253-154	1	Seal-Oil



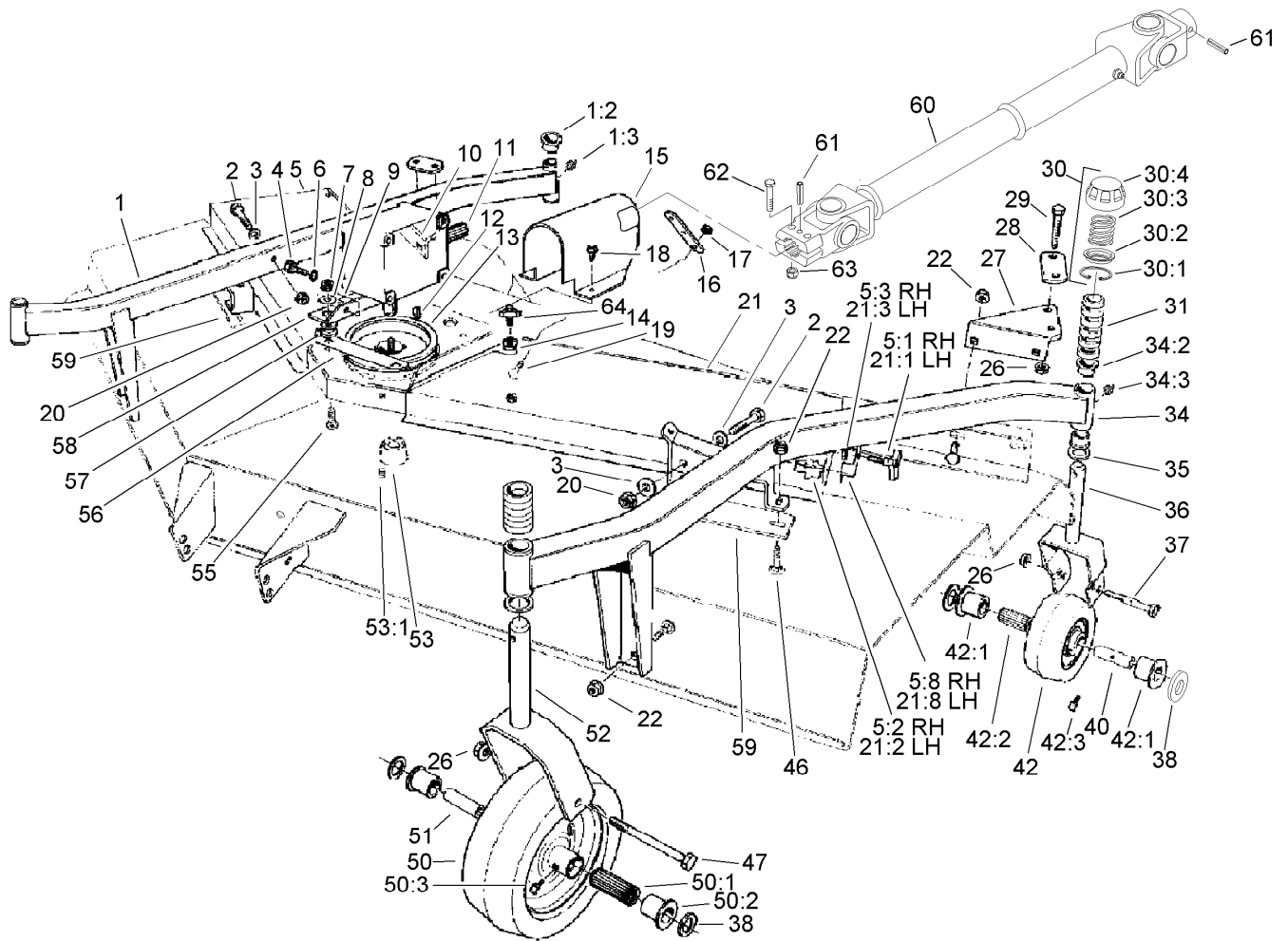
Left Hand Spindle Assembly No. 95-3089

<i>Ref.</i>	<i>Part Number</i>	<i>Qty.</i>	<i>Description</i>
1	84-2060-03	1	LH Pulley ASM
2	3-8514	1	Washer-Thrust
3	3296-49	1	Nut-Lock, NI
4	253-138	2	Seal-Oil
5	302-5	1	Fitting-Grease
6	285-17	1	Plug-Pipe
7	84-2070	1	Spindle
8	49-8320	1	Bearing ASM
9	84-2020	1	Housing-Spindle
10	253-154	1	Seal-Oil



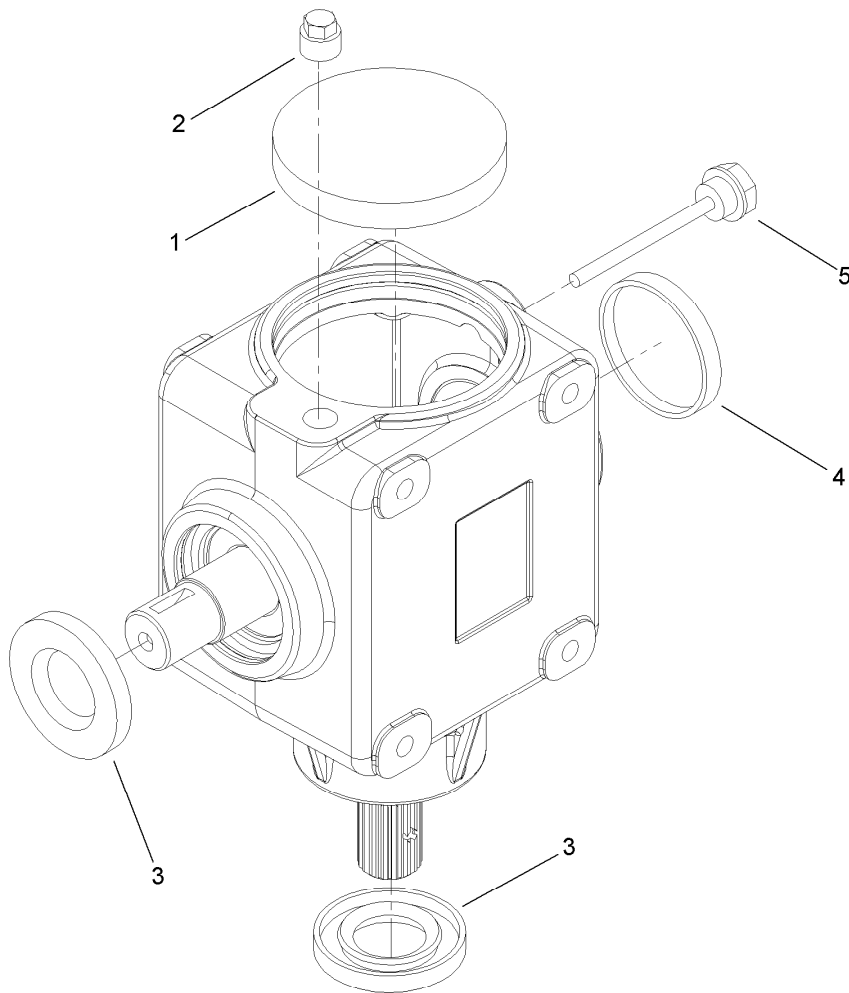
Carrier Frame Assembly

Ref.	Part Number	Qty.	Description	Ref.	Part Number	Qty.	Description
1	26-1490	1	RH Castor Arm ASM	21:2	3269-5	2	Rivet-Pop
1:2	94-1291	4	Bushing	21:3	3296-59	1	Nut-Lock, NI
1:3	302-5	2	Fitting-Grease	21:8	66-1260	1	Bracket-Knob
2	324-12	4	Screw-HH	22	32128-49	12	Nut-HHF
3	66-6480	4	Washer	26	32128-23	8	Nut-HF
4	323-4	4	Screw-HH	27	39-7450-01	1	LH Clamp Bracket
5	14-5869	1	RH Cover ASM	28	39-3330-01	2	Plate-Castor Arm Clamp
5:1	27-4570	1	Knob-Seat	29	325-14	4	Screw-HH
5:2	3269-5	2	Rivet-Pop	30	92-8862	4	HOC Cap ASM
5:3	3296-59	1	Nut-Lock, NI	30:1	92-5581	1	Ring-Retaining
5:8	66-1260	1	Bracket-Knob	30:2	92-5583	1	Washer-Cap
6	3253-21	4	Washer-Lock	30:3	92-5584	1	Spring-Compression
7	32128-21	4	Nut-HF	30:4	92-8861	1	Cap-HOC
8	63-8410	4	Washer	31	63-0070	24	Spacer
9	93-6697	1	Decal-Lube	34	26-1430	1	Castor Arm ASM, LH
10	39-3340-01	1	Bracket-Arm Clamp	34:2	94-1291	4	Bushing
11	106-4355-03	1	Gearbox ASM	34:3	302-5	2	Fitting-Grease
12	3257-5	1	Key-Woodruff	35	3-6781	8	Washer-Thrust
13	26-1400-03	1	Pulley-Deck	36	75-9680-01	2	Castor Fork ASM
14	66-6310	2	Washer-Cup	37	325-18	2	Screw-HH
15	93-9838-03	1	Shroud-Shaft, Drive	38	3256-6	8	Washer-Flat
16	21-3770-01	1	Lift Strap-Deck, Rr	40	63-1770	2	Spanner
17	3290-357	2	Nut-HHF, Whiz	42	63-8400	2	Caster Wheel ASM
18	32104-82	2	Screw-HHF	42:1	62-5580	2	Bearing-Outside
19	3231-27	2	Screw-CARR	42:2	63-8580	1	Bearing-Roller
20	32128-42	4	Nut-HF	42:3	302-40	1	Fitting-Grease
21	14-5879	1	LH Cover ASM	46	3233-2	12	Screw-CARR
21:1	27-4570	1	Knob-Seat	47	325-22	2	Screw-HH



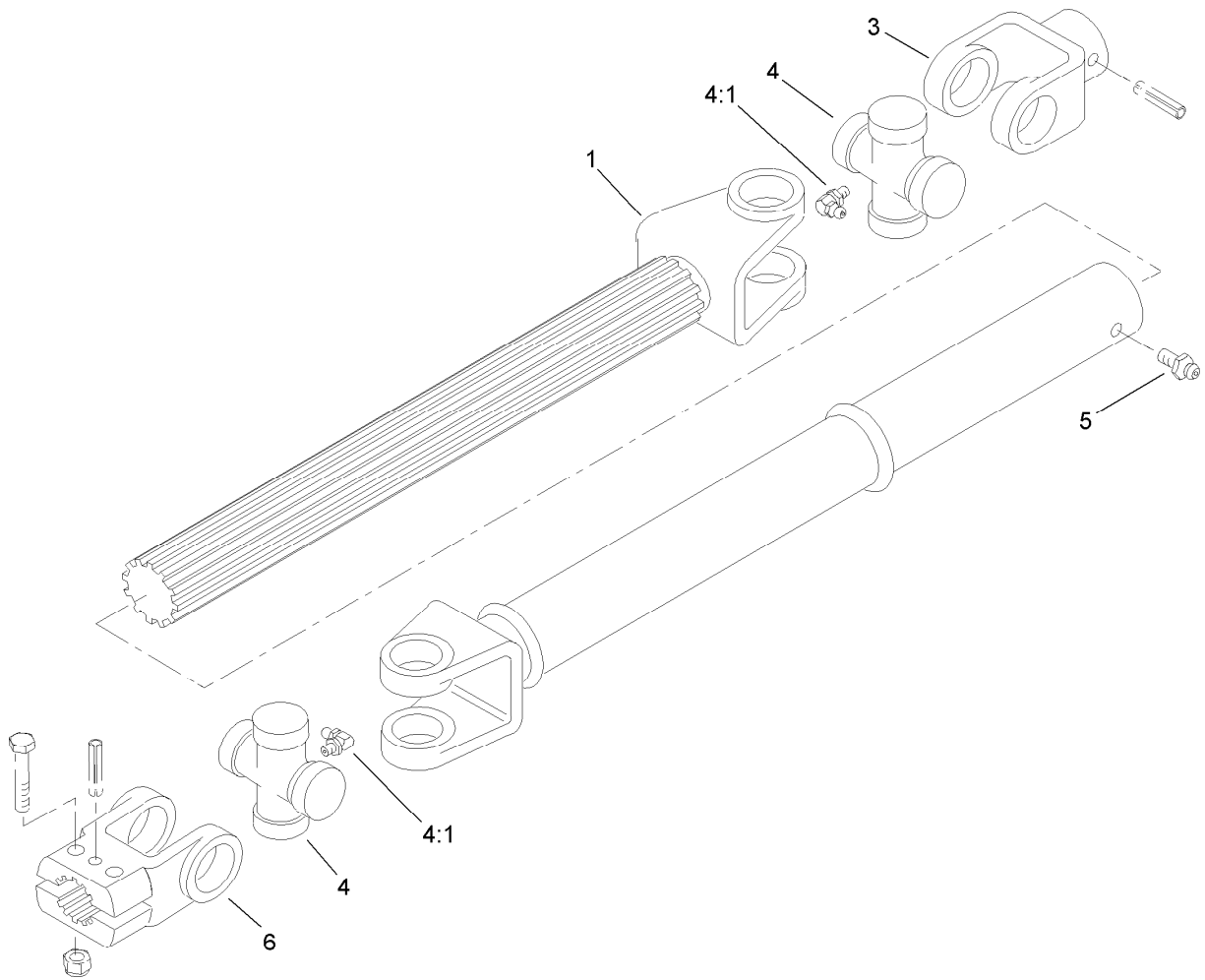
Carrier Frame Assembly (continued)

Ref.	Part Number	Qty.	Description	Ref.	Part Number	Qty.	Description
50	92-1655	2	10-Inch Castor Wheel ASM	56	68-9890-01	1	Cover-Gearbox, Front
50:1	83-4740	1	Bearing	57	63-9750	4	Mount
50:2	62-5580	2	Bearing-Outside	58	68-8560-03	2	Bracket-Gearbox
50:3	302-40	1	Fitting-Grease	59	26-1190-01	2	Plate-Reinforcement
51	62-4340	2	Spanner	60	93-9996	1	Driveshaft ASM
52	26-1530-01	2	Castor Fork ASM	61	32121-34	2	Pin-Roll
53	23-1640	1	Bushing-Taperlock	62	322-9	2	Screw-HH
53:1	3247-4	2	Screw-Set	63	3296-29	2	Nut-Lock, NI
55	3231-26	4	Screw-CARR	64	27-4570	2	Knob-Seat



Gear Box Assembly No. 106-4355-03

<i>Ref.</i>	<i>Part Number</i>	<i>Qty.</i>	<i>Description</i>
1	107-2932	1	Cap-Oil
2	107-2933	1	Plug
3	107-2934	2	Seal-Oil
4	107-2935	1	Cap-Oil
5	107-2936	1	Plug-Filler, Dipstick



Driveshaft Assembly No. 93-9996

<i>Ref.</i>	<i>Part Number</i>	<i>Qty.</i>	<i>Description</i>
1	93-9963	1	Shaft-Yoke, Slip
3	62-3800	1	Yoke-End
4	54-9180	2	U-Joint Kit
4:1	62-3820	1	Fitting-Grease
5	302-58	1	Fitting-Straight
6	54-9040	1	Yoke-End

Attachments and Accessories

For 30722 72in Side Discharge Mower Groundsmaster 300 Series

Product Name	Model/Part
25in LH Atomic Blade ASM.....	106-4354
Blade-High Sail, 25in, LH.....	23-2410-03
Spacer	27-1040
Mowers and Boom Quick Attach Adapter Kit	30719
10in Pneumatic Castor Wheel Asm	54-8810
PTO-Male Half.....	92-4663
10in Foam Filled Wheel	93-5973
10in Caster Wheel Kit	95-3082
Castor Wheel Kit.....	95-3084
72in RD Wheel Set Kit	95-3086
Blade And Belt Kit.....	95-3087
LH Spindle Kit.....	95-3089
Center Spindle Kit.....	95-3090
High Sail Blade and Belt Kit	95-3094
RH Spindle Kit	95-3095
Blade Service Pack, 25in	108-1454

Notes:

Notes:

Notes:



Count on it.