



**Count on it.**

**Parts Catalog**

**Polar Trac Kit**

**Groundsmaster® 7200 Series Mower**

**Model No. 30370—Serial No. 311000001 and Up**

# Ordering Replacement Parts

To order replacement parts, please supply the part number, the quantity, and the description of each part desired.

## Understanding Reference Numbers

Each identified part in an illustration has a reference number. The reference number for a part also appears in the parts list, along with other information about the part.

This catalog uses two special reference number formats, one to indicate parts in a service assembly and another to indicate the quantity of a given part in an illustration.

## Service Assembly Reference Numbers

Parts in service assemblies have reference numbers in the form a:b. The a represents the reference number of the entire service assembly and the b represents a sequential number unique to each part within the service assembly.

For example, a wheel assembly might be identified by reference number 6, the tire by 6:1, the valve by 6:2, and the wheel by 6:3. When you order the assembly identified by reference number 6, you receive all parts identified by reference numbers 6:1, 6:2, and 6:3. However, you may also order any part individually. Reference numbers of this type appear in illustration and in parts lists.

## Reference Numbers Indicating Quantity

In an illustration, if a reference number indicates more than one part, the reference number has the form nX y. The n represents the quantity of the part, the X is the multiplication symbol, and the y represents the reference number.

For example, in an illustration, the reference number 2X 37 means that two of the parts identified by reference number 37 are indicated.

# List of Abbreviations

**AR:** as required

**ASM:** assembly

**BBC:** blade brake control

**BHTF:** button head thread forming

**CARR:** carriage

**CCW:** counter clockwise

**CW:** clockwise

**DEG:** degrees

**DPA:** Dual Point Adjustment

**ECM:** electronic control module

**EXT:** external

**FH:** flat head

**GA:** gauge

**HD:** heavy-duty

**HF:** hex flange

**HH:** hex head

**HHF:** hex head flange

**HHFTF:** hex head flange thread forming

**HJ:** hex jam

**HLH:** hex lag head

**HOC:** height-of-cut

**HSBH:** hex socket button head

**HSFH:** hex socket flat head

**HSH:** hex socket head

**HWH:** hex washer head

**HWHTF:** hex washer head thread forming

**HYD:** hydraulic

**LH:** left hand

**LP:** Liquid Propane

**NI:** nylon insert

**NPTF:** national pipe thread fine

**PFH:** phillips flat head

**PPH:** phillips pan head

**PPHTF:** phillips pan head thread forming

**PRH:** phillips round head

**PTH:** phillips truss head

**PTO:** power-take-off

**RH:** right hand

**ROPS:** roll-over protection system

**RRB:** rear roller brush

**SFH:** slotted fillister head

**SHH:** slotted hex head

**SHWH:** slotted hex washer head

**SPH:** slotted pan head

**SQH:** square head

**SRH:** slotted round head

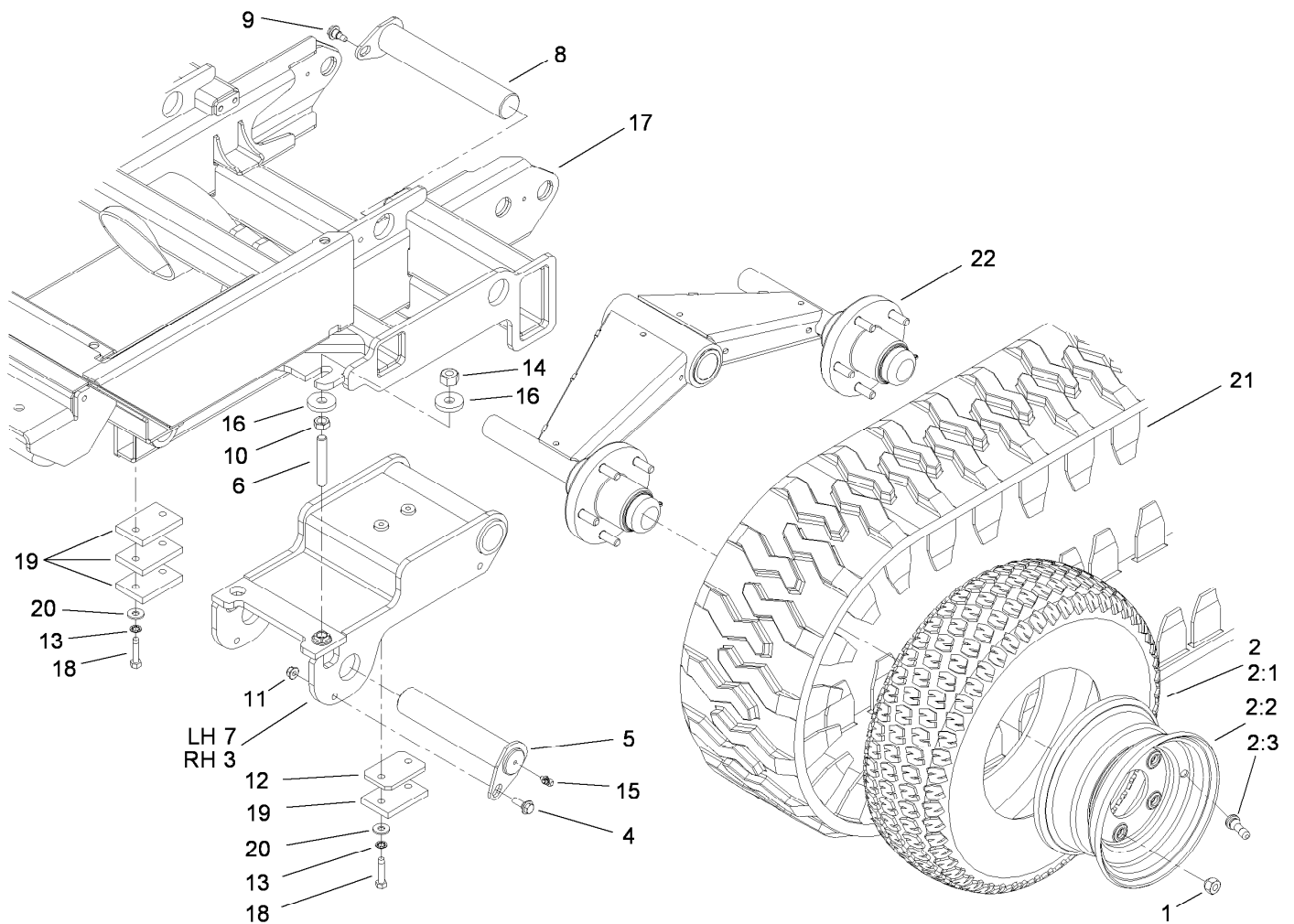
**STD:** standard

**TAP:** self tapping

**TTH:** torx truss head

# Contents

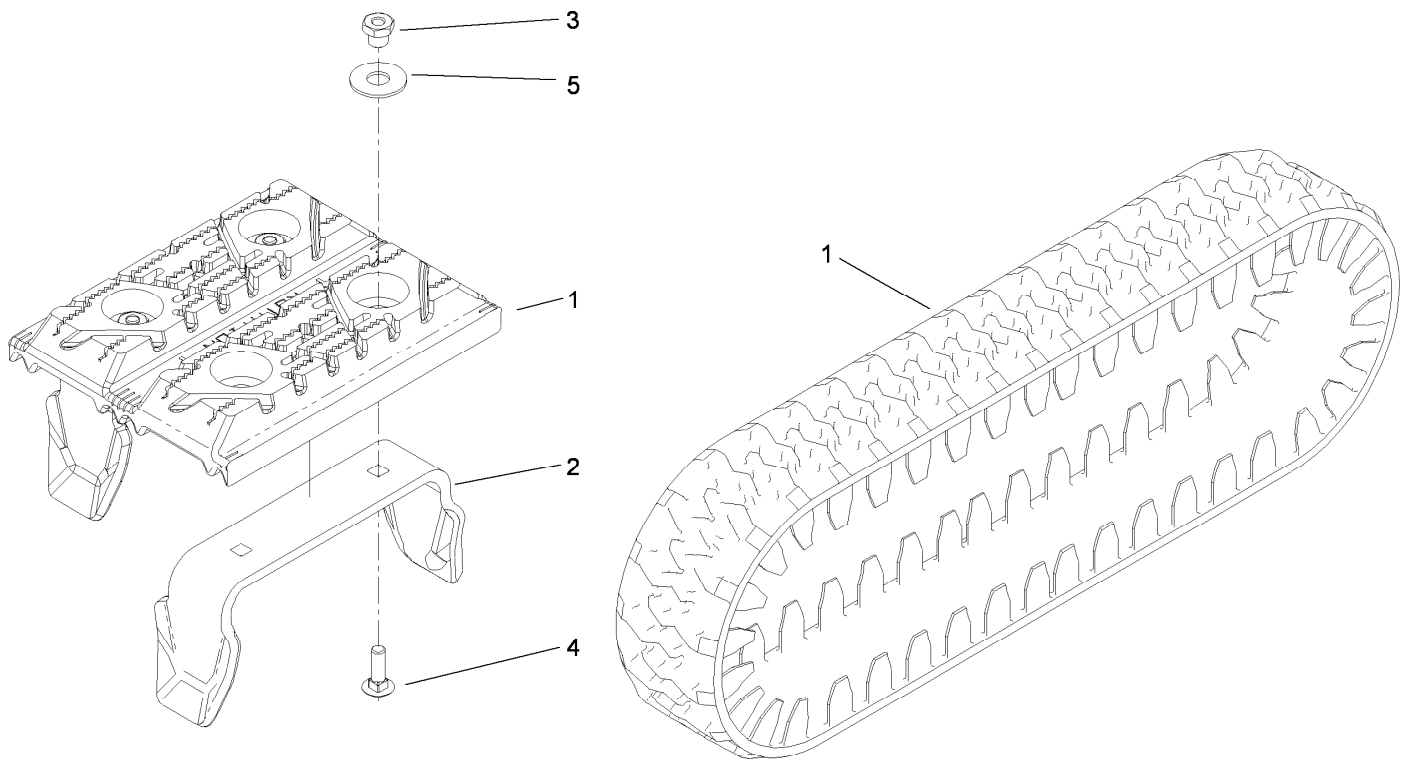
Track and Frame Assembly .....	4
Drive Track Assembly No. 108-5164 .....	5
Bogie Assembly No. 112-1693.....	6
Foot Control Assembly .....	7
Lift Arm and Hydraulic Assembly.....	8
Hydraulic Cylinder Assembly No. 117-9227.....	10
2-Spool Hydraulic Valve Assembly No. 110-3588.....	11
Skid Plate Assembly .....	12
Change Over Assembly .....	13



## Track and Frame Assembly

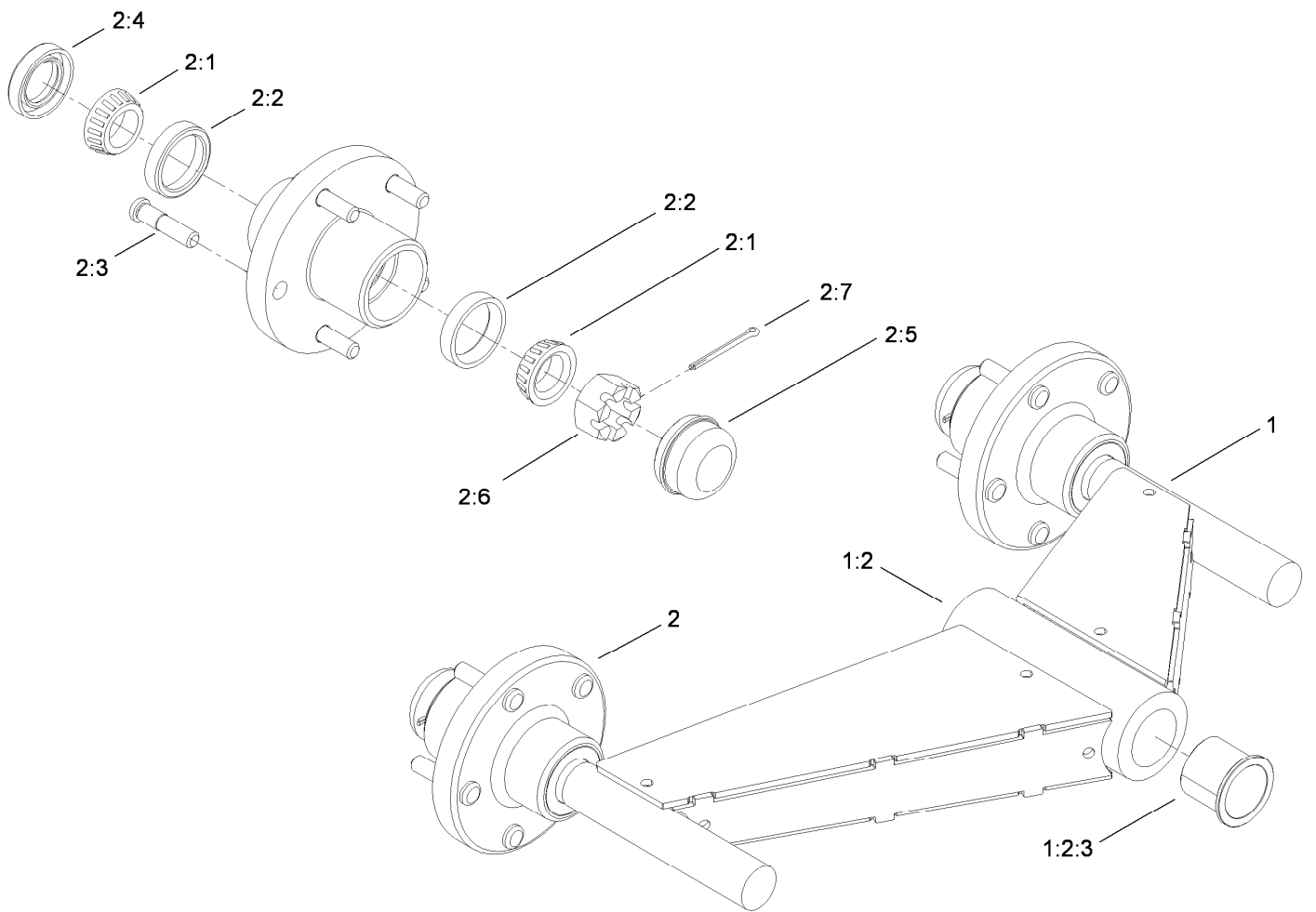
Ref.	Part Number	Qty.	Description
1	23-7270	20	Nut-Wheel
2	110-5465	6	Wheel And Tire ASM
2:1	98-2662	1	Tire
2:2	110-5466	1	Wheel
2:3	232-27	1	Stem-Valve
3	110-9793-03	1	RH Pivot ASM
4	27-0410	2	Screw-Shoulder
5	108-9857	2	Lower Pivot Pin ASM
6	105-1088	2	Stud
7	108-5195-03	1	LH Pivot ASM
8	110-9765	2	Upper Pivot Pin ASM
9	99-5105	2	Bolt-Shoulder
10	3218-5	2	Nut-Jam

Ref.	Part Number	Qty.	Description
11	104-8300	2	Nut-Flange, NI
12	110-5454	2	Plate-Spacer
13	3254-2	8	Washer-Lock, Internal
14	3296-25	2	Nut-Lock, NI
15	302-60	2	Fitting-Grease
16	30-8770	4	Washer
17	110-9767-03	1	Frame ASM
18	32144-57	8	Screw
19	69-9290	8	Pad-Bumper
20	3256-3	8	Washer-Flat
21	108-5164	2	Drive Track ASM
22	112-1693	2	Bogie ASM



## Drive Track Assembly No. 108-5164

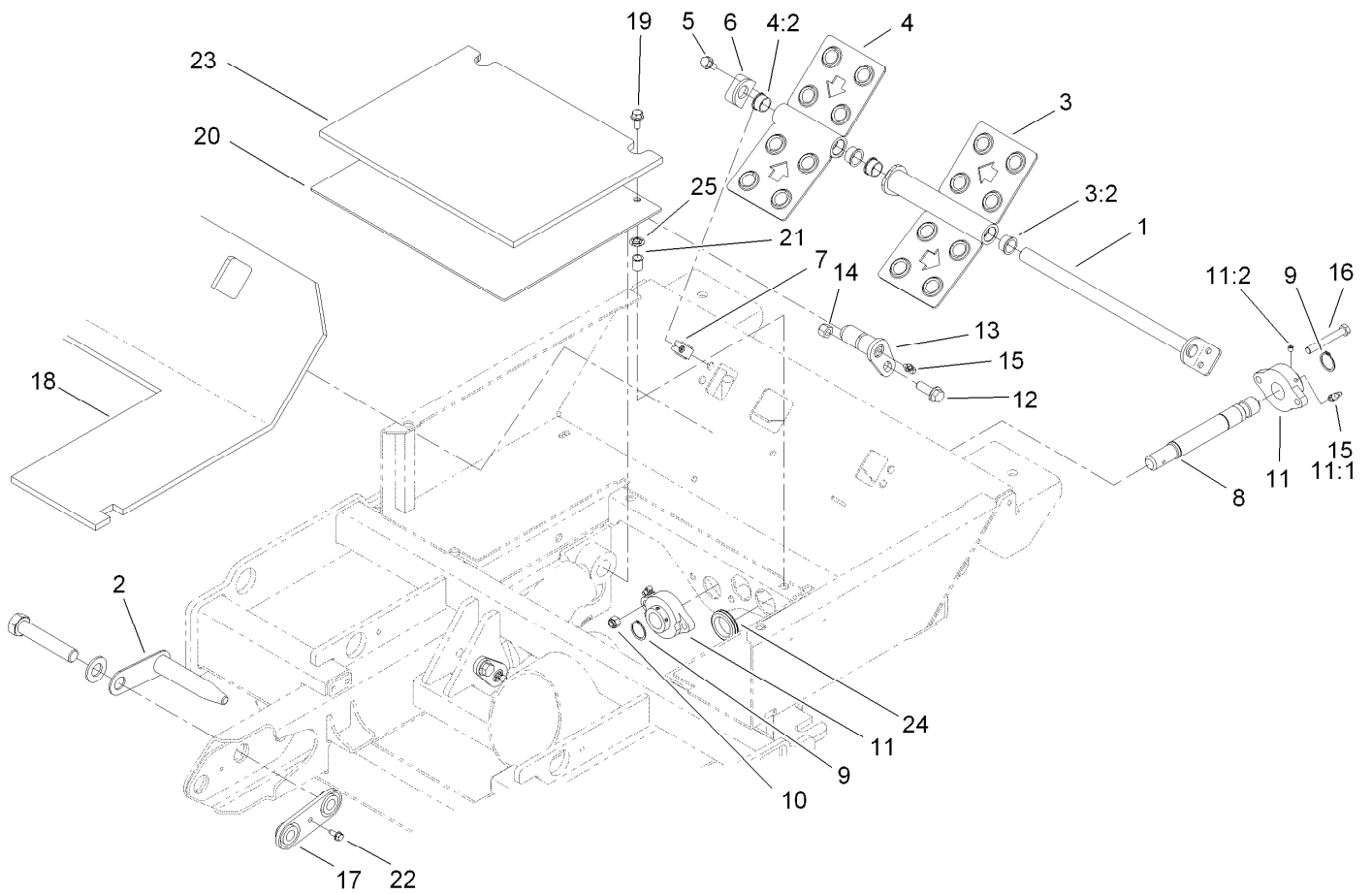
<i>Ref.</i>	<i>Part Number</i>	<i>Qty.</i>	<i>Description</i>
1	110-9786	1	Track-Rubber, Molded
2	110-9787	40	Guide-Track
3	110-9788	80	Nut-T, Plated
4	3230-2	80	Bolt-CARR
5	110-9789	80	Washer-Flat



## Bogie Assembly No. 112-1693

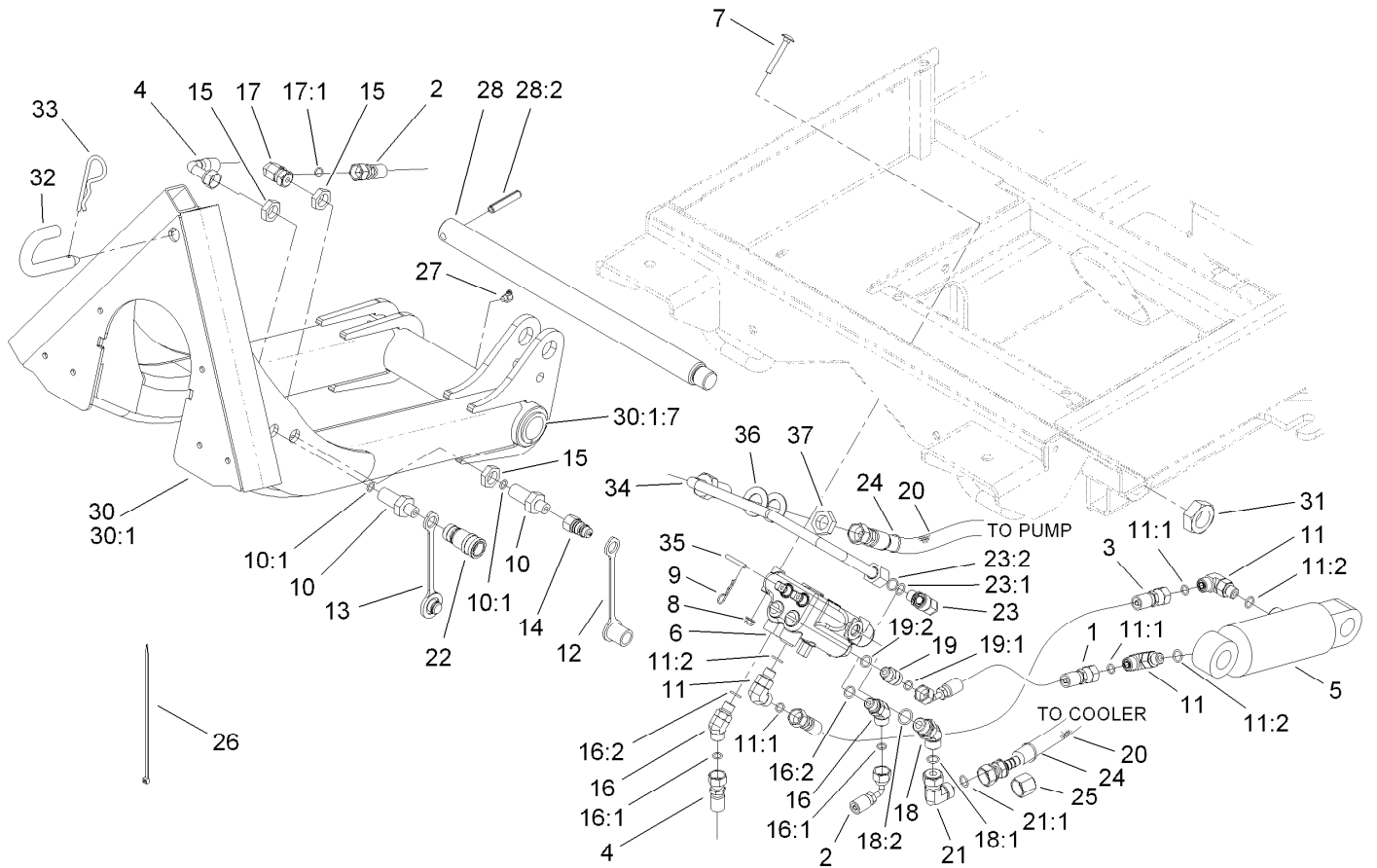
Ref.	Part Number	Qty.	Description
1		1	Pivot Arm ASM ●
1:2		1	Hub ASM ●
1:2:3	95-8805	2	Bushing
2	107-2615	2	Hub ASM
2:1	254-92	2	Cone-Bearing, Outer
2:2	254-72	2	Bearing-Cup, Tapered
2:3	69-2990	5	Stud-Wheel
2:4	112-1690	1	Seal-Oil
2:5	112-1494	1	Cap-Dust
2:6	32136-11	1	Nut-Hex, Slot
2:7	3272-20	1	Pin-Cotter

● Not serviced separately



## Foot Control Assembly

<i>Ref.</i>	<i>Part Number</i>	<i>Qty.</i>	<i>Description</i>	<i>Ref.</i>	<i>Part Number</i>	<i>Qty.</i>	<i>Description</i>
1	108-5181	1	Control Pivot Shaft ASM	12	3234-15	2	Screw-HHF
2	108-9870	2	Coupler Pin ASM	13	98-2654	2	Pivot Pin ASM
3	112-9587	1	RH Pedal ASM	14	3296-48	2	Nut-Lock, NI
3:2	256-252	2	Bearing-Flange	15	302-60	4	Fitting-Grease
4	112-9588	1	LH Pedal ASM	16	323-13	2	Screw-HH
4:2	256-252	2	Bearing-Flange	17	110-9785	2	Retainer Plate ASM
5	3234-5	4	Screw-HHF	18	112-9556	1	Floormat-Platform
6	108-5178	1	Ear-Pivot	19	3234-5	2	Screw-HHF
7	110-3510	4	Nut-Retainer	20	108-9866-03	1	Plate-Cover
8	107-2604	1	Shaft	21	32148-7	2	Nut-Insert
9	32151-29	2	Ring-Retaining	22	32144-10	2	Screw-HWH
10	3296-39	2	Nut-Lock, NI	23	112-9555	1	Panel-Access, Floor
11	107-7851	2	Bearing-Flange, 2 Bolt	24	240-3	4	Grommet-Rubber
11:1	302-5	1	Fitting-Grease	25	117-2749	2	Nut-Push
11:2	3245-35	2	Screw-Set, HSH				



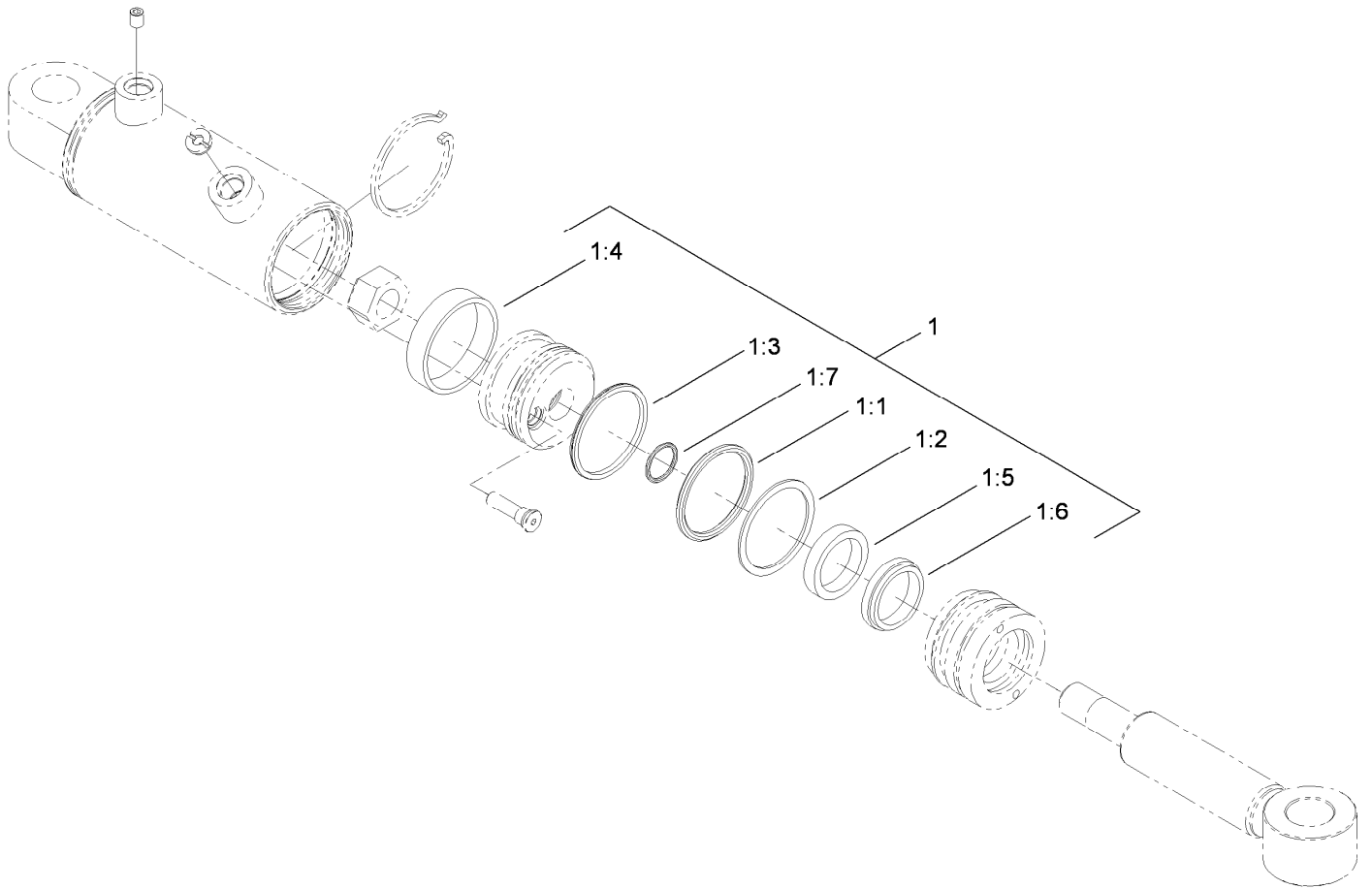
## Lift Arm and Hydraulic Assembly

Ref.	Part Number	Qty.	Description	Ref.	Part Number	Qty.	Description
1	110-8223	1	HYD Hose ASM	16	340-87	2	Fitting-HYD, 45 DEG
2	110-8222	1	HYD Hose ASM	16:1	237-22	1	O-Ring
3	110-8224	1	HYD Hose ASM	16:2	237-42	1	O-Ring
4	110-8225	1	HYD Hose ASM	17	340-159	1	Fitting-HYD, 90 DEG
5	117-9227	1	Cylinder-HYD	17:1	237-22	2	O-Ring
6	110-3588	1	Valve-Hydraulic, 2 Spool	18	340-101	1	Fitting-HYD, 45 DEG
7	3230-33	2	Screw-CARR	18:1	237-30	1	O-Ring
8	104-7201	2	Nut-HF	18:2	237-79	1	O-Ring
9	9335044	2	Pin-Hair	19	340-2	1	Fitting-HYD, Straight
10	108-9800	2	Fitting-Bulkhead	19:1	237-22	1	O-Ring
10:1	237-22	1	O-Ring	19:2	237-42	1	O-Ring
11	340-77	3	Fitting-HYD, 90 DEG	20	112-1685	2	Cover-Hose
11:1	237-22	1	O-Ring	21	94-6031	1	Fitting-HYD
11:2	237-42	1	O-Ring	21:1	237-30	1	O-Ring
12	353-985	1	Cap-Dust	22	63-1220	1	Coupler-Disconnect, Quick
13	353-984	1	Plug-Dust	23	340-99	1	Fitting-HYD, 90 DEG
14	63-1240	1	Nipple-Disconnect, Quick	23:1	237-30	1	O-Ring
15	340-70	3	Nut-Lock	23:2	237-42	1	O-Ring

● Not serviced separately



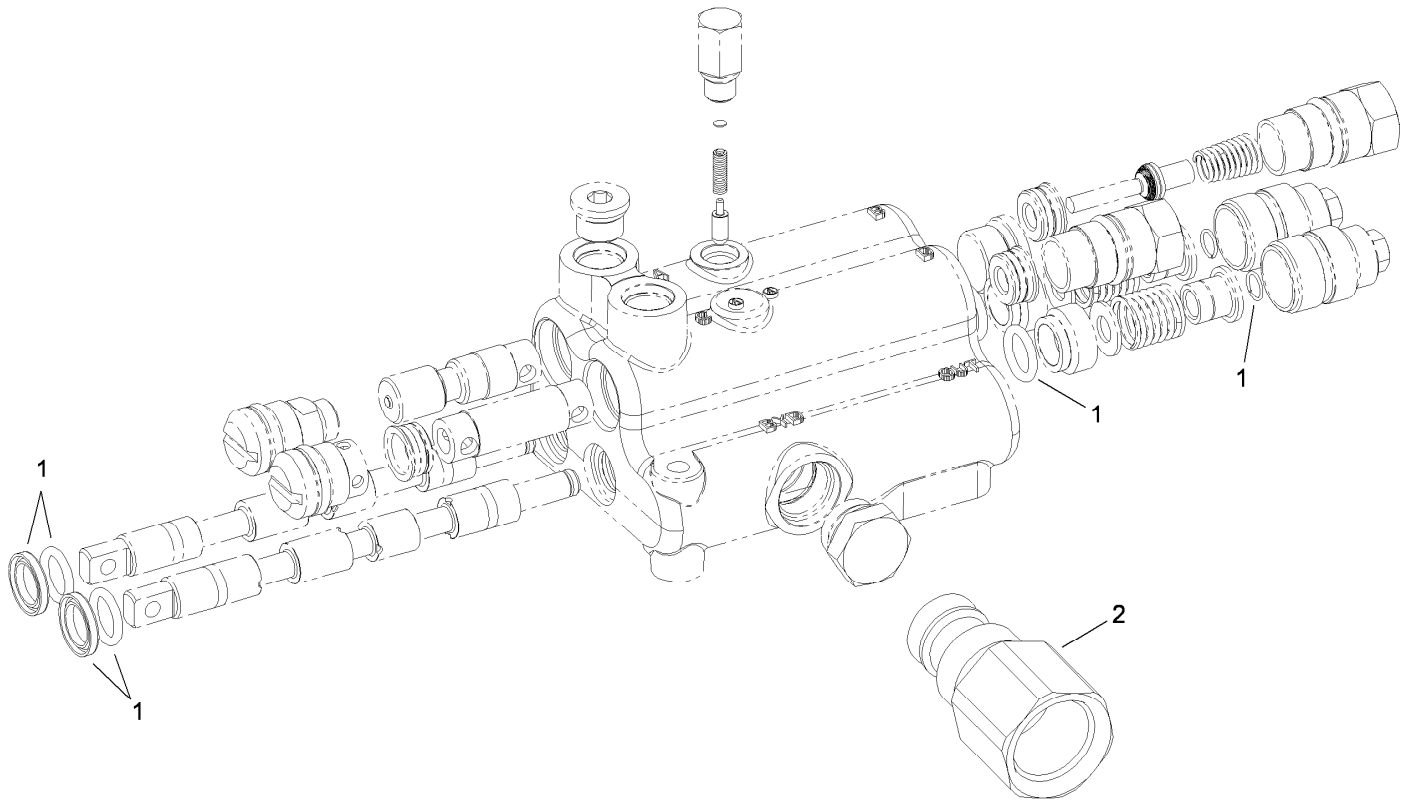




## Hydraulic Cylinder Assembly No. 117-9227

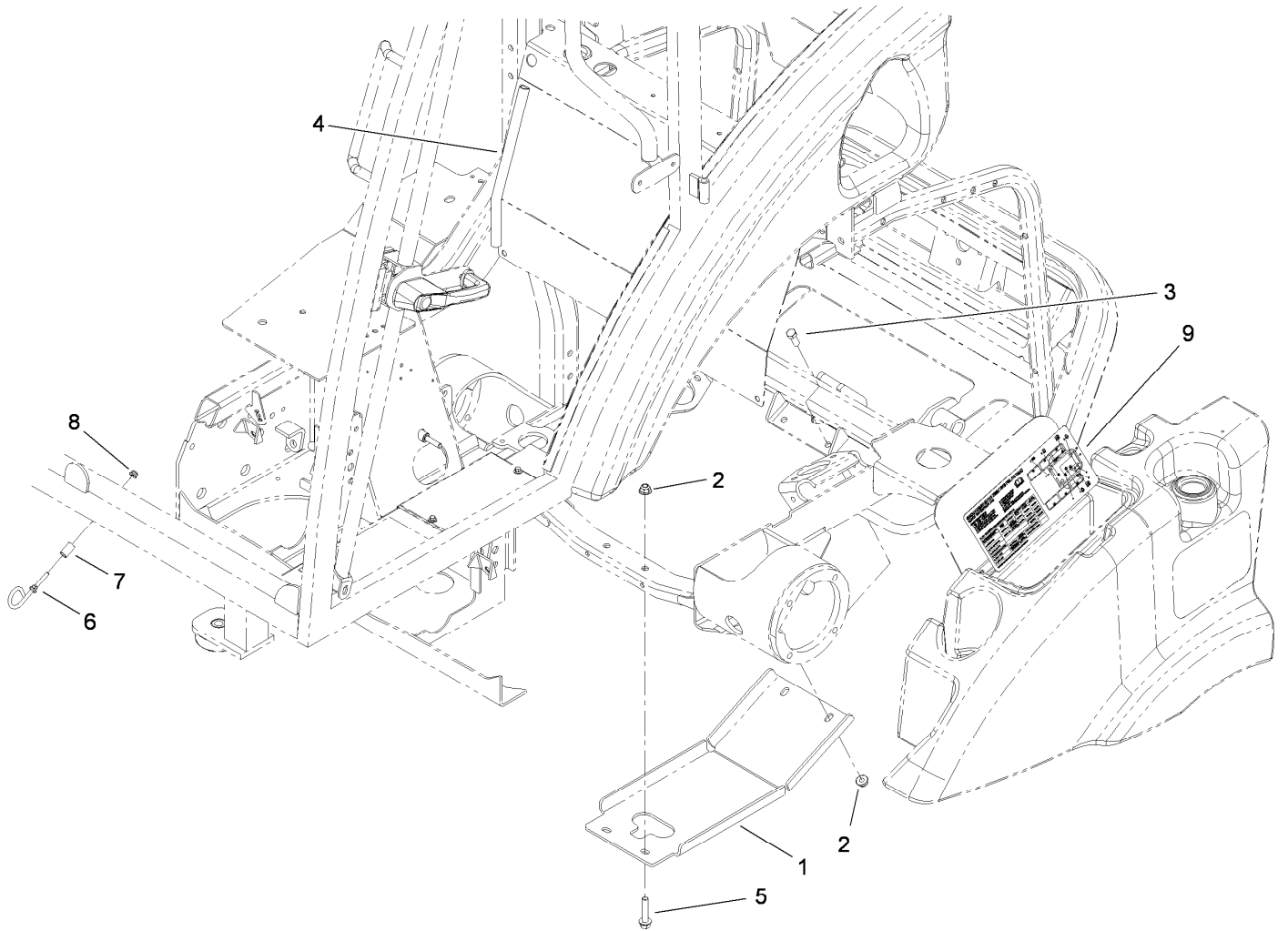
<i>Ref.</i>	<i>Part Number</i>	<i>Qty.</i>	<i>Description</i>
1	114-4049	1	Seal Kit
1:1		1	Ring-Retaining ●
1:2		1	Backup ●
1:3		1	Seal-Bp ●
1:4		1	Ring-Wear ●
1:5		1	Polypak ●
1:6		1	Seal-Dust ●
1:7		1	Ring-Retaining ●

● Not serviced separately



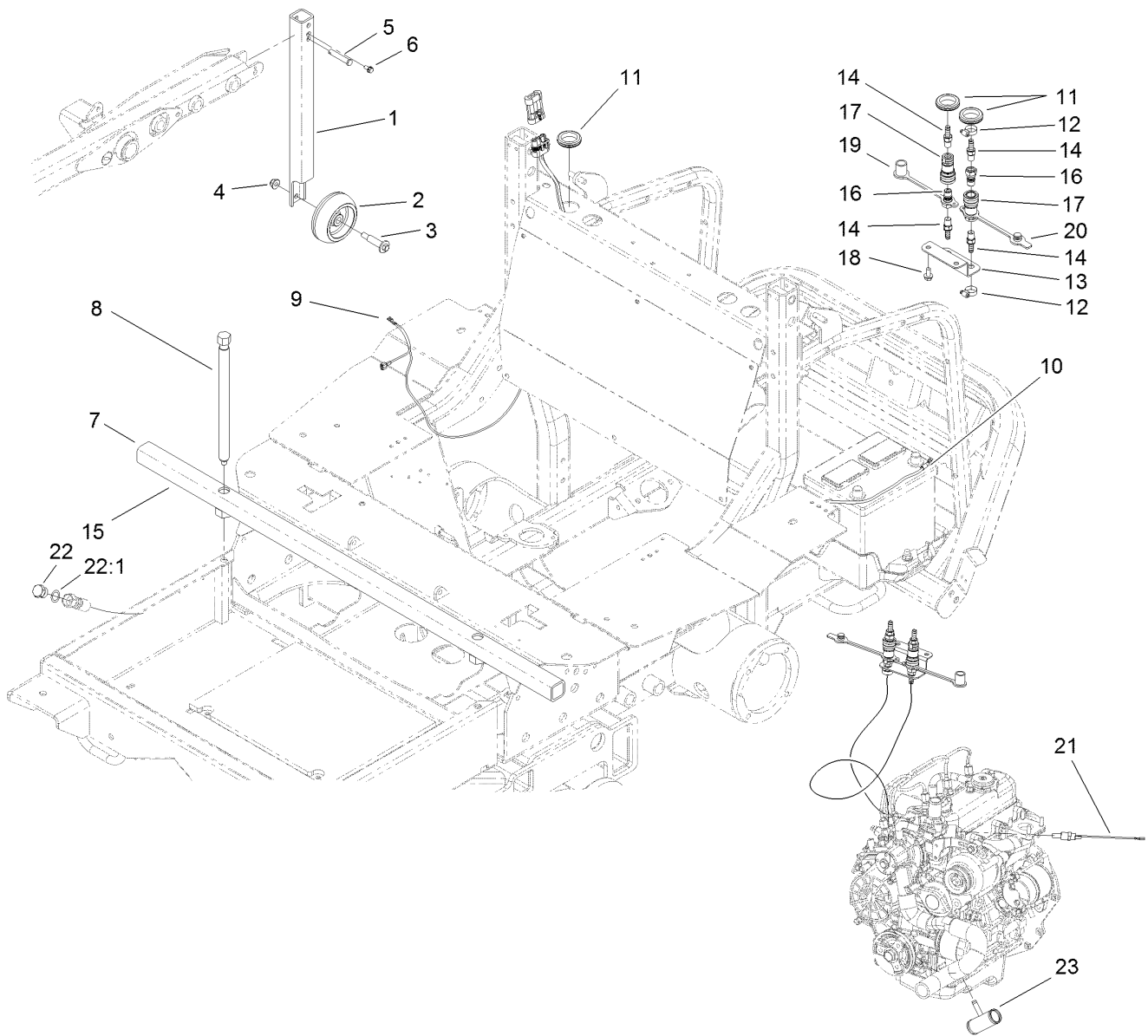
## 2-Spool Hydraulic Valve Assembly No. 110-3588

<i>Ref.</i>	<i>Part Number</i>	<i>Qty.</i>	<i>Description</i>
1	99-3530	1	Seal Kit
2	110-5490	1	Power Beyond Sleeve Kit



## Skid Plate Assembly

<i>Ref.</i>	<i>Part Number</i>	<i>Qty.</i>	<i>Description</i>
1	110-5516-03	1	Plate-Skid
2	104-8301	4	Nut-Flange, NI
3	323-6	2	Screw-HH
4	112-9581	2	Seal-Bulb
5	3234-19	2	Screw-HHF
6	107-3908	1	Guide-Rope, Upper
7	85-0290	1	Spacer-Pivot, Seat
8	104-7201	1	Nut-HF
9	114-4043	1	Decal-Service Instructions



## Change Over Assembly

<i>Ref.</i>	<i>Part Number</i>	<i>Qty.</i>	<i>Description</i>	<i>Ref.</i>	<i>Part Number</i>	<i>Qty.</i>	<i>Description</i>
1	110-5491-03	2	Tube-Upright, Deck Removal	13	112-1498	1	Plate-Bulkhead
2	701756	2	Wheel-Gage	14	108-0342	4	Fitting-Straight
3	56-6591	2	Screw-Shoulder, HWH	15	112-6312	3	Decal-Warning
4	104-8301	2	Nut-Flange, NI	16	108-9899	2	Coupler
5	283-82	2	Pin-Clevis	17	108-9898	2	Coupler
6	32144-4	2	Screw-HWH	18	32144-14	2	Screw-HWHTF
7	110-5456-03	1	Tube ASM	19	106-7881	1	Cap-Dust, HYD
8	112-6358	2	Screw	20	106-7882	1	Plug-Dust, HYD
9	110-1667	1	Harness-Wire	21	112-6347	1	Switch-Temp, Dual
10	108-9455	1	Harness-Wire, Fusible Link	22	106-8100	2	Plug-HYD
11	240-3	3	Grommet-Rubber	22:1	237-79	1	O-Ring
12	2412-36	4	Clamp-Hose	23	93-5052	1	Fitting-Radiator

**Notes:**

**Notes:**



**Count on it.**