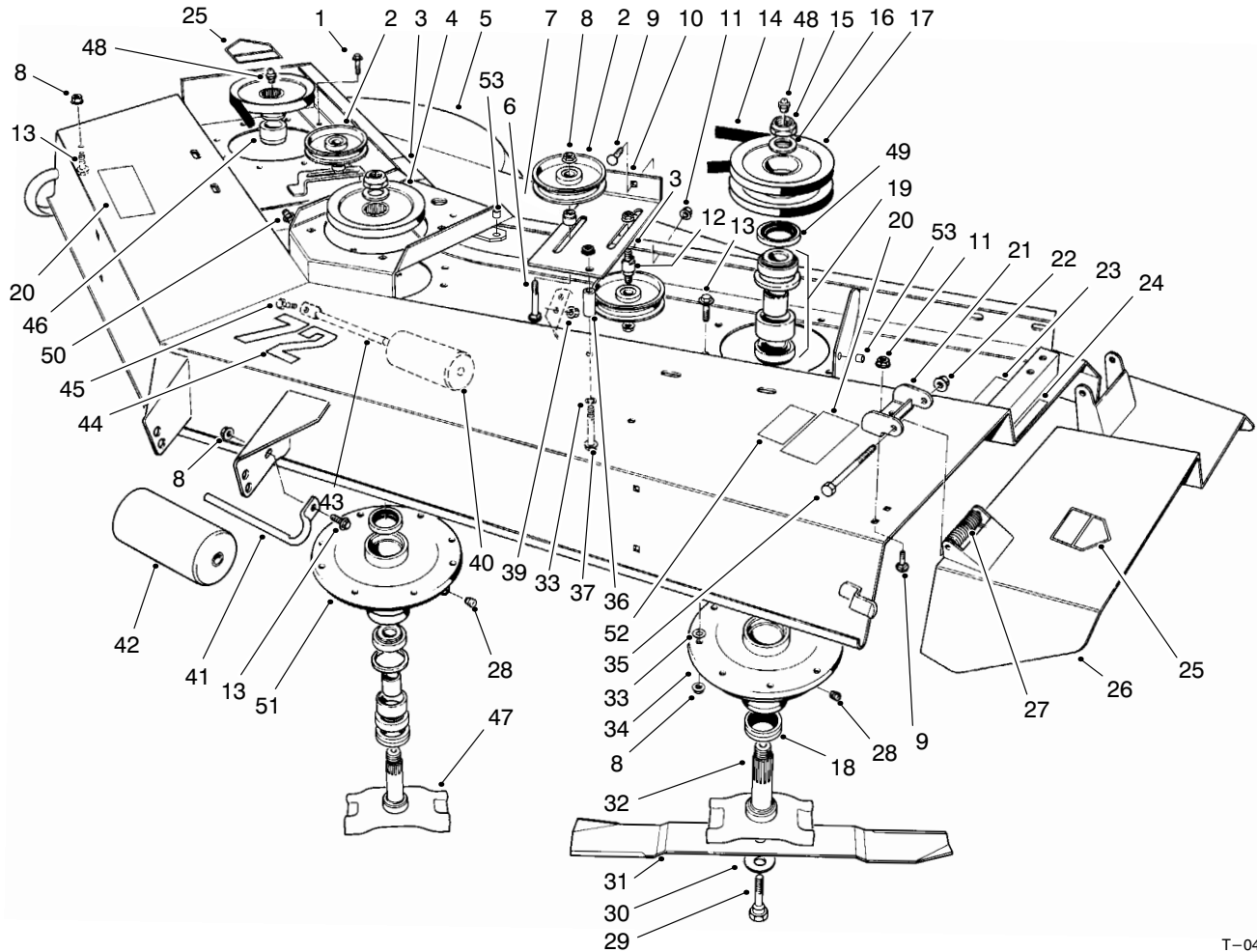




MODEL NO. 30722-51124 & UP  
MODEL NO. 30722TE-51124 & UP

PARTS  
CATALOG

**72" SIDE DISCHARGE CUTTING UNIT**  
(For Groundsmaster® 300 Series)

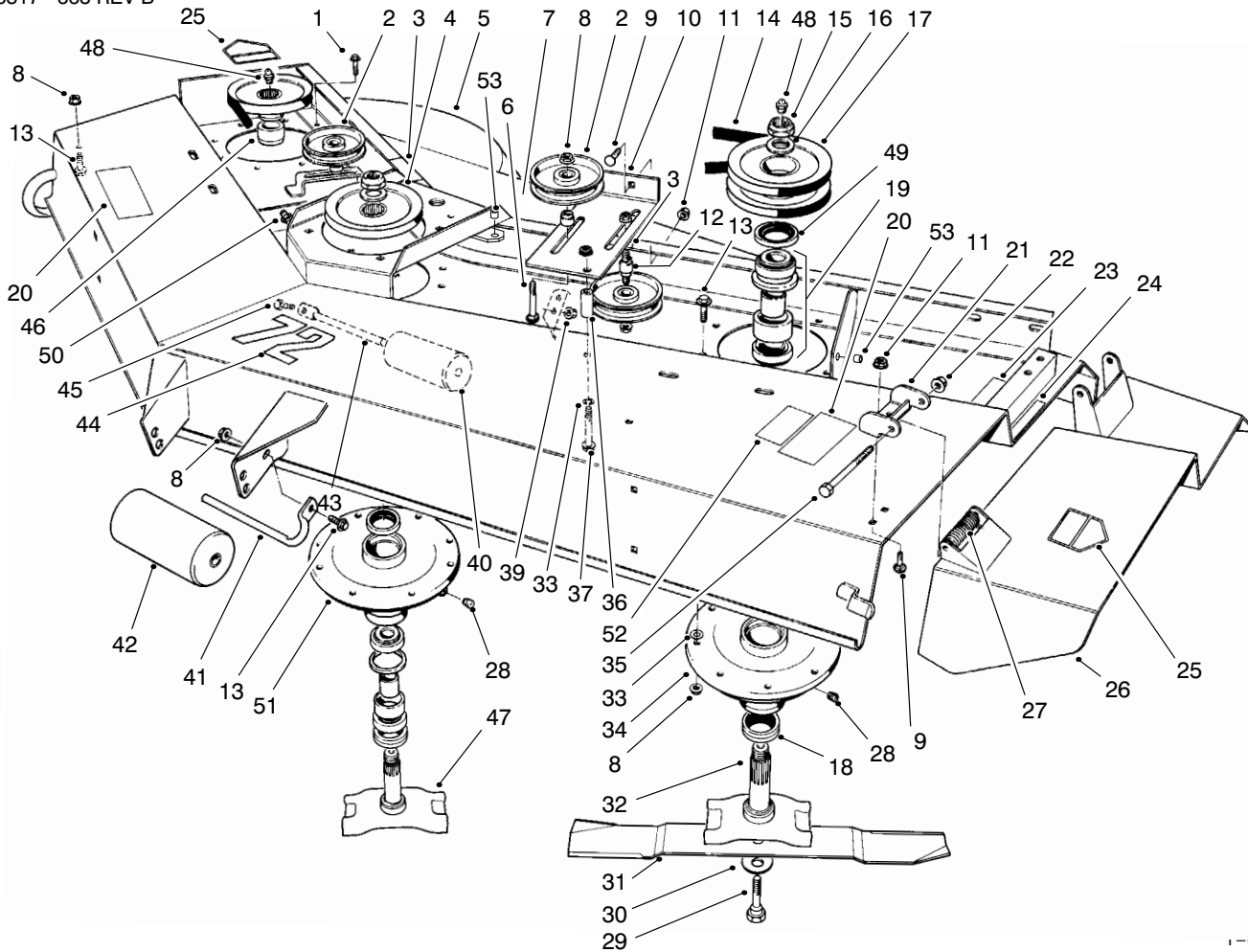


T-0441-2

**DECK ASSEMBLY**

Ref. No.	Part No.	Description	No. Used
1	3234-11	Screw - Hex. Hd. Flange	4
2	26-1840	Idler Pulley	3
3	67-5360	Decal - Danger	2
3	93-7273	Decal - Danger (Europe)	2
4	26-1760	Pulley	2
5	93-7181	Deck Assembly (Incl. Ref. #3, 20, 23-25, 44, & 52-53)	1
5	95-6276	Deck Asm. (Europe) (Incl. Ref. #3, 20, 23-25, 44, & 52-53)	1
6	3231-29	Bolt - Carriage	2
7	26-1860	Spacer - Idler Pulley	2
8	32128-21	Nut - Flange	33
9	3231-27	Bolt - Carriage	6
10	26-1870	Idler Mount L.H.	1

Ref. No.	Part No.	Description	No. Used
11	3290-357	Nut - Flange	6
12	26-1850	Stud - Idler	1
13	3234-1	Screw - Hex. Hd. Flange	24
14	21-0890	V-Belt	3
15	3296-49	Nut	3
16	3-8514	Washer	3
17	84-2060	Pulley L.H.	1
18	253-138	Seal - Oil	6
19	49-8320	Bearing & Spacer Set	3
20	66-1340	Decal - Danger	2
20	93-7824	Decal - Danger (Europe)	2
21	51-1530	Hinge Bracket	2
22	32128-23	Nut - Lock Flange	2
23	68-7280	Decal - Torque	1
23	93-7817	Decal - Torque (Europe)	1



1-0441-2

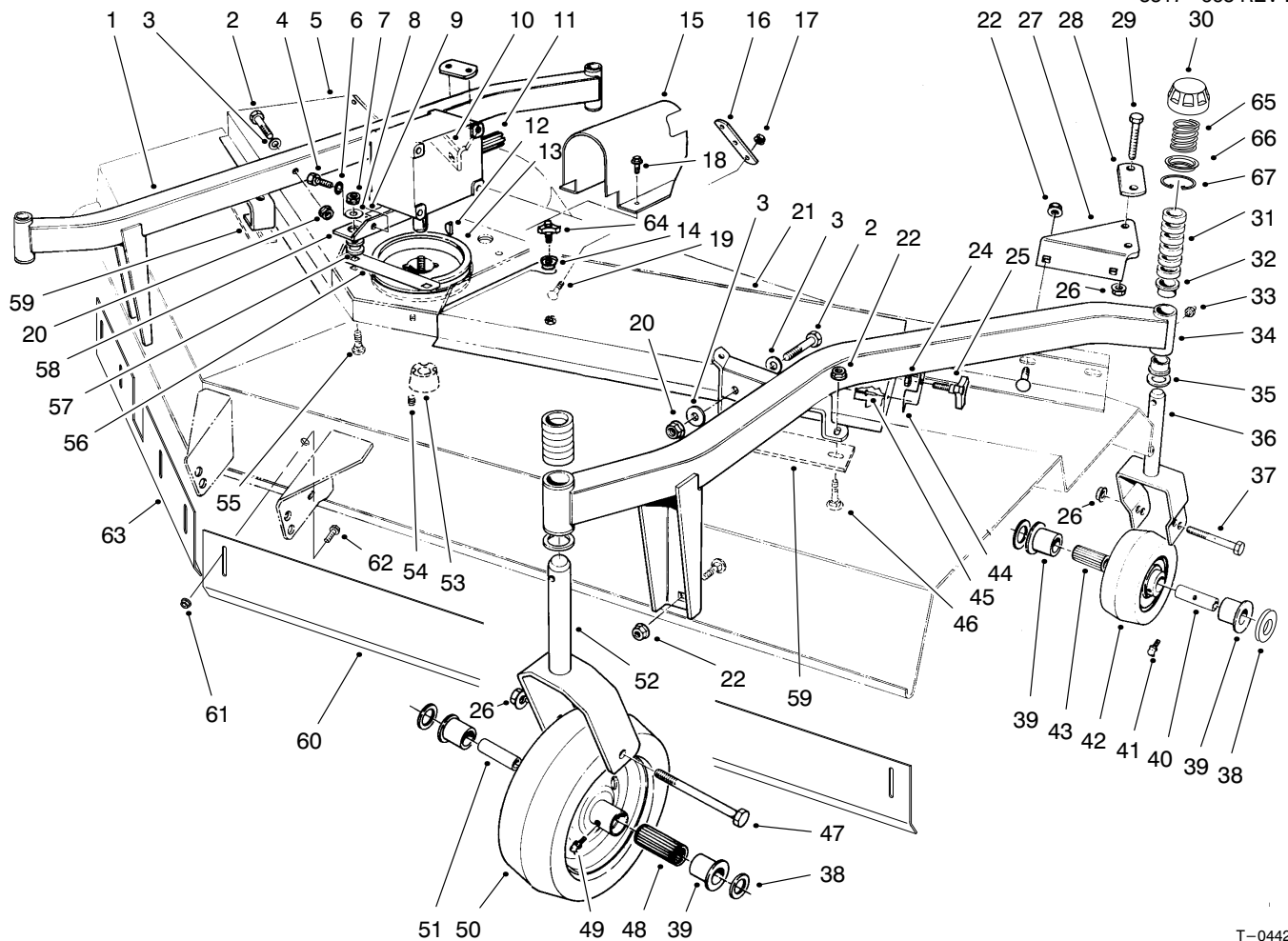
## DECK ASSEMBLY (Continued)

Ref. No.	Part No.	Description	No. Used
24	66-6380	Decal - Danger	1
24	93-7828	Decal - Danger (Europe)	1
25	43-8480	Decal - Danger	2
25	93-7815	Decal - Danger (Europe)	2
26	51-1470	Deflector	1
27	51-1550	Spring	2
28	285-17	Plug	4
29	26-1820	Screw - Cap Hex. Hd.	3
30	26-1990	Washer - Belleville	3
31	29-5530	Blade	3
32	84-2070	Spindle - Outer	2
33	3256-24	Washer	A/R
34	84-2020	Outer Spindle Housing	2
35	325-17	Screw - Cap Hex. Hd.	2
36	26-1880	Spacer - Idler Mount	1
37	323-12	Screw - Cap Hex. Hd.	1
39	32128-25	Nut - Lock Flange	2
40	36-1740	Roller - Deck	2
41	68-6840	Shaft - Roller	1
42	68-6710	Roller - Deck	1
43	62-4480	Rod - Roller	2
44	57-0280	Decal - 72"	1
45	322-4	Screw - Cap. Hex Hd.	2
46	84-2090	Spacer R.H. Spindle	1

Ref. No.	Part No.	Description	No. Used
47	84-5370	Spindle Center	1
48	302-5	Fitting - Grease	3
49	253-154	Seal - Oil	3
50	302-52	Fitting - Grease	1
51	84-2080	Center Spindle Housing	1
52	92-7847	Decal - Warning	1
52	93-7809	Decal - Warning (Europe)	1
†53	3290-469	Nut - Insert	4
*54	23-2410	Blade - High Sail (Opt.)	3
*	95-3087	Blade & Belt Kit (Incl. Ref. #14 & 31)	1
*	95-3094	Blade & Belt Kit (Hi-Lift) (Incl. Ref. #14 & 54)	1
*	95-3095	Spindle Asm. Kit - RH (Incl. Ref. #1, 4, 8, 13, 15, 16, 18-19, 28, 32-34, 46, & 48-49)	1
*	95-3090	Spindle Asm. Kit - Center (Incl. Ref. #4, 8, 13, 15-16, 18-19, 28, 33 & 47-49 & 51)	1
*	95-3089	Spindle Asm. Kit - LH (Incl. Ref. #1, 8, 13, 15-19, 28, 32-34 & 48-49)	1

\*Not Illustrated

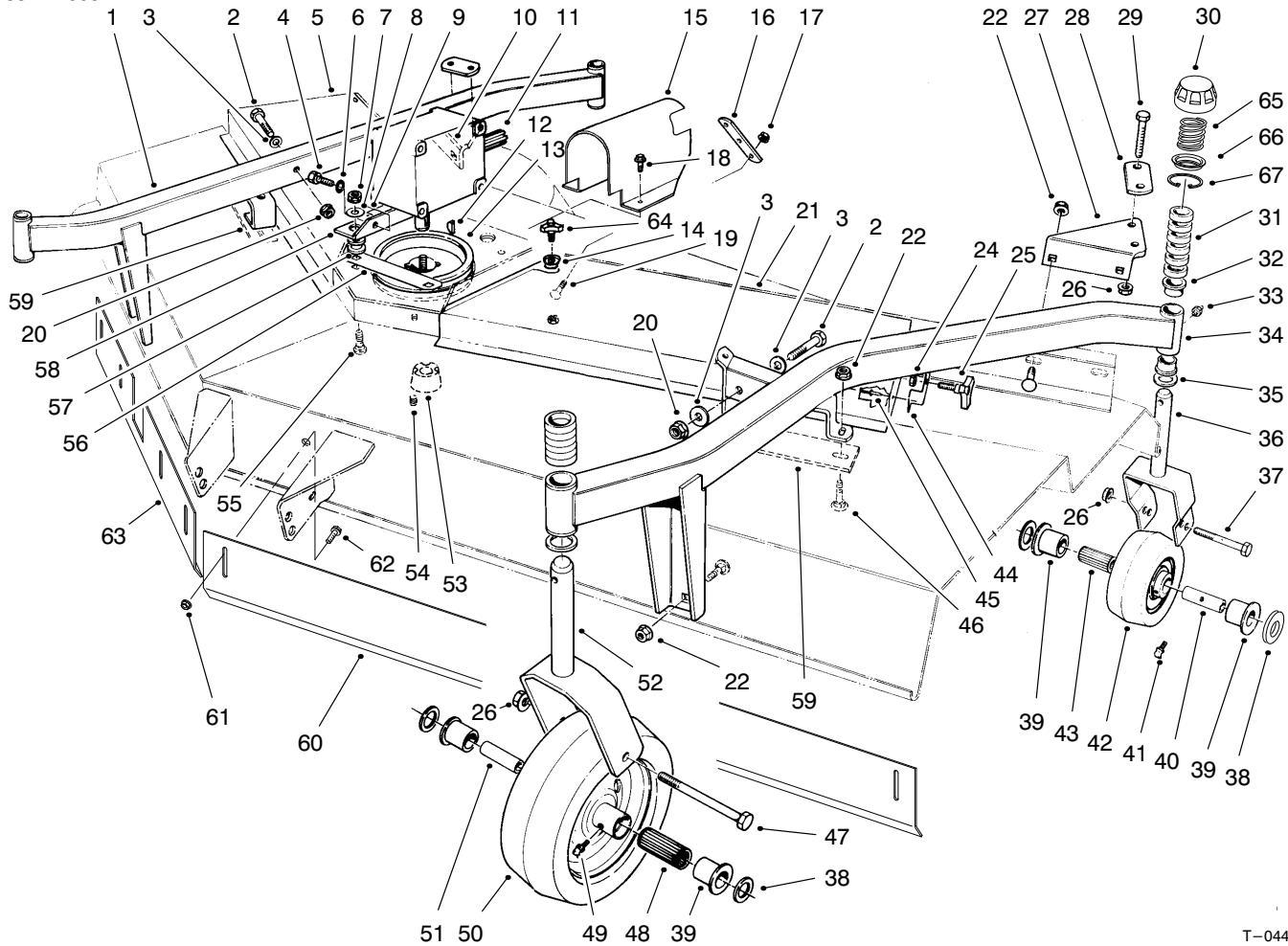
†Special tool required to install.



T-0442C

## CARRIER FRAME ASSEMBLY

Ref. No.	Part No.	Description	No. Used	Ref. No.	Part No.	Description	No. Used
1	26-1490	Caster Arm R.H. (Incl. Ref. #32 & 33)	1	24	3296-59	Nut - Lock	4
2	324-12	Screw - Cap Hex Hd.	4	25	27-4570	Knob	2
3	66-6480	Washer - Flat	4	26	32128-23	Nut - Lock Flange	8
4	323-4	Screw - Cap Hex Hd.	4	27	39-7450	Bracket - Clamp	1
5	14-5869	Cover - Deck R.H. (Incl. Ref. #24, 25, 44-45)	1	28	39-3330	Bar - Caster Clamp	2
6	3253-21	Washer - Lock	4	29	325-14	Screw - Cap Hex Hd.	4
7	32128-21	Nut - Flange	4	30	92-8861	Cap - Height-of-Cut	4
8	63-8410	Washer	4	31	63-0070	Spacer - 1/2"	24
9	70-2560	Decal - Lube	1	*	27-1040	Spacer - 1/4"	48
9	93-6697	Decal - Lube (Europe)	1	32	94-1291	Bushing - Special	8
10	39-3340	Bracket - Clamp	1	33	302-5	Fitting - Grease	4
11	68-6810	Gear Case Assembly	1	34	26-1430	Caster Arm (Incl. Ref. #32 & 33)	1
12	3257-5	Key - Woodruff	1	35	3-6781	Washer	8
13	26-1400	Pulley - Deck	1	36	75-9680	Fork - Caster, Rear	2
14	66-6310	Washer - Cup	2	37	325-18	Screw - Cap Hex Hd.	2
15	93-9838	Shroud - Drive Shaft	1	38	3256-6	Washer - Flat	8
16	21-3770	Strap - Lift	1	39	62-5580	Bushing	8
17	3290-357	Nut - Flange	2	40	63-1770	Spanner - Rear	2
18	32104-82	Screw - Cap Self-Tapping	2	41	302-11	Fitting - Grease	2
19	3231-27	Bolt - Carriage	2	42	63-8400	Wheel - Caster Rear (Incl. Ref. #39, 41 & 43)	2
20	32128-42	Nut - Flange	4	43	63-8580	Bearing - Roller	2
21	14-5879	Cover - Deck L.H. (Incl. Ref. #24, 25, 44-45)	1	44	66-1260	Bracket - Knob	2
22	32128-49	Nut - Flange	12	45	3269-5	Rivet - Pop	4
				46	3233-2	Bolt - Carriage	12



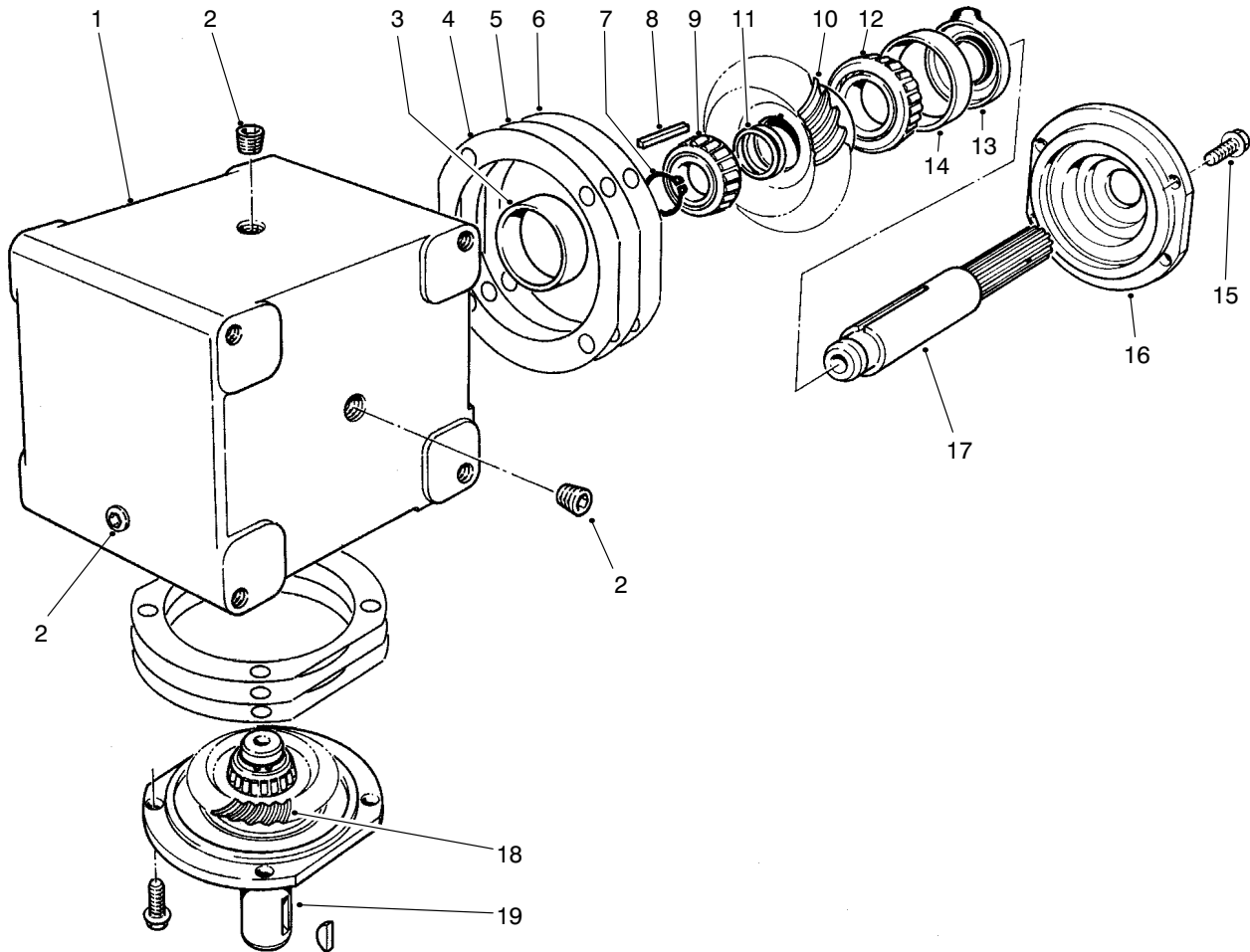
T-0442C

## CARRIER FRAME ASSEMBLY (Continued)

Ref. No.	Part No.	Description	No. Used
47	325-22	Screw - Cap Hex. Hd.	2
48	83-4740	Bearing - Roller	2
49	302-40	Fitting - Grease	2
50	92-1655	Wheel - Caster - Front (Incl. Ref. #39, 48 & 49)	2
51	62-4340	Spanner - Front	2
52	26-1530	Fork - Caster, Front	2
53	23-1640	Bushing - TaperLock (Incl. Ref. #54)	1
54	3247-4	Screw - Set	2
55	3231-26	Bolt - Carriage	4
56	68-9890	Cover - Gear Box Front	1
57	63-9750	Mount - Isolation	4
58	68-8560	Bracket - Gear Box	2
59	26-1190	Plate - Reinforcement	2
60	93-6605	Baffle - LH (Europe)	1
61	32128-20	Nut - Lock, Flange Hd. (Europe)	7
62	3234-5	Screw - Cap Flange Hd. (Europe)	7

Ref. No.	Part No.	Description	No. Used
63	93-6604	Baffle - RH (Europe)	1
64	27-4570	Knob	2
64	323-7	Screw - Cap Hex. Hd. (Europe)	2
65	92-5584	Spring - Compression	4
66	92-5583	Washer - Cap	4
67	92-5581	Ring - Retaining	4
*	92-8862	Asm. - Cap, Height-of-Cut (Incl. Ref. #30 & 65-67)	4
*	12-1509	Pneumatic Tire & Wheel (Optional)	2
*	95-3082	Front Castor Wheel Asm. (Incl. Ref. #26, 38, 47, & 50-51)	1
*	95-3084	Rear Castor Wheel Asm. (Incl. Ref. #26, 37-38, 40, & 42)	1
*	95-3086	Castor Wheel Set (4 Wheels) (Incl. Ref. #26, 37-38, 40, 42, 47 & 50-51)	1

\*Not Illustrated

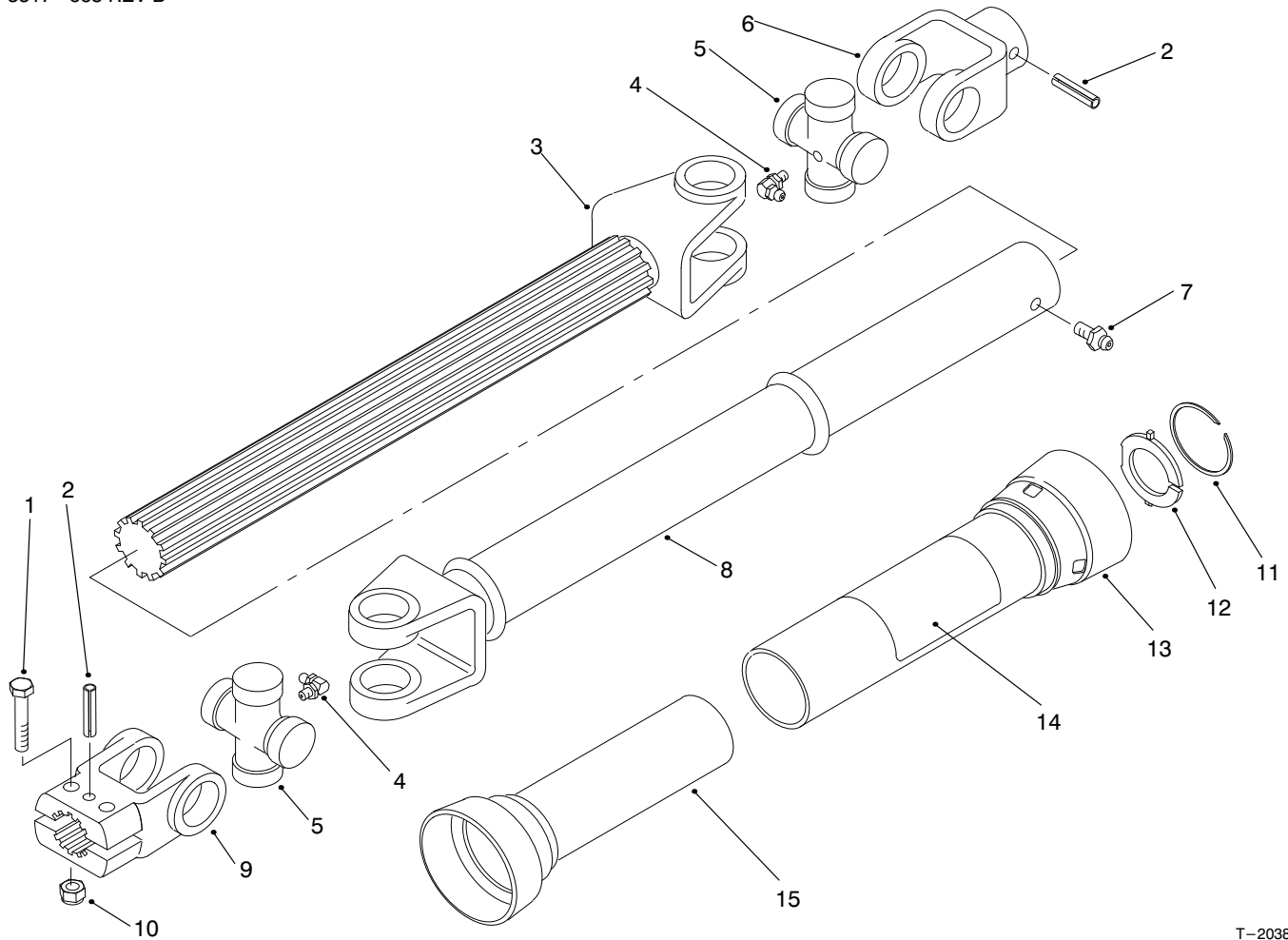


0977

## GEAR BOX ASSEMBLY NO. 68-6810

Ref. No.	Part No.	Description	No. Used
1	68-7030	Housing	1
2	62-3490	Plug - Pipe (Solid)	4
3	62-3360	Cup - Bearing	2
4	62-3420	Gasket (.015 in.)	A/R
5	62-3430	Gasket (.005 in.)	A/R
6	62-3440	Gasket (.003 in.)	A/R
7	68-7070	Ring - Retaining	2
8	62-3380	Key	2
9	62-3370	Cone - Bearing	2
10	68-7080	Gear	1

Ref. No.	Part No.	Description	No. Used
11	72-9370	Shim (.020 in.)	4
12	254-94	Cone - Gear	1
13	62-3400	Seal	2
14	62-3340	Cup - Bearing	2
15	62-3310	Screw - Cap	8
16	62-3410	Cap	2
17	68-7040	Shaft	1
18	68-7060	Gear	1
19	68-7050	Shaft	1



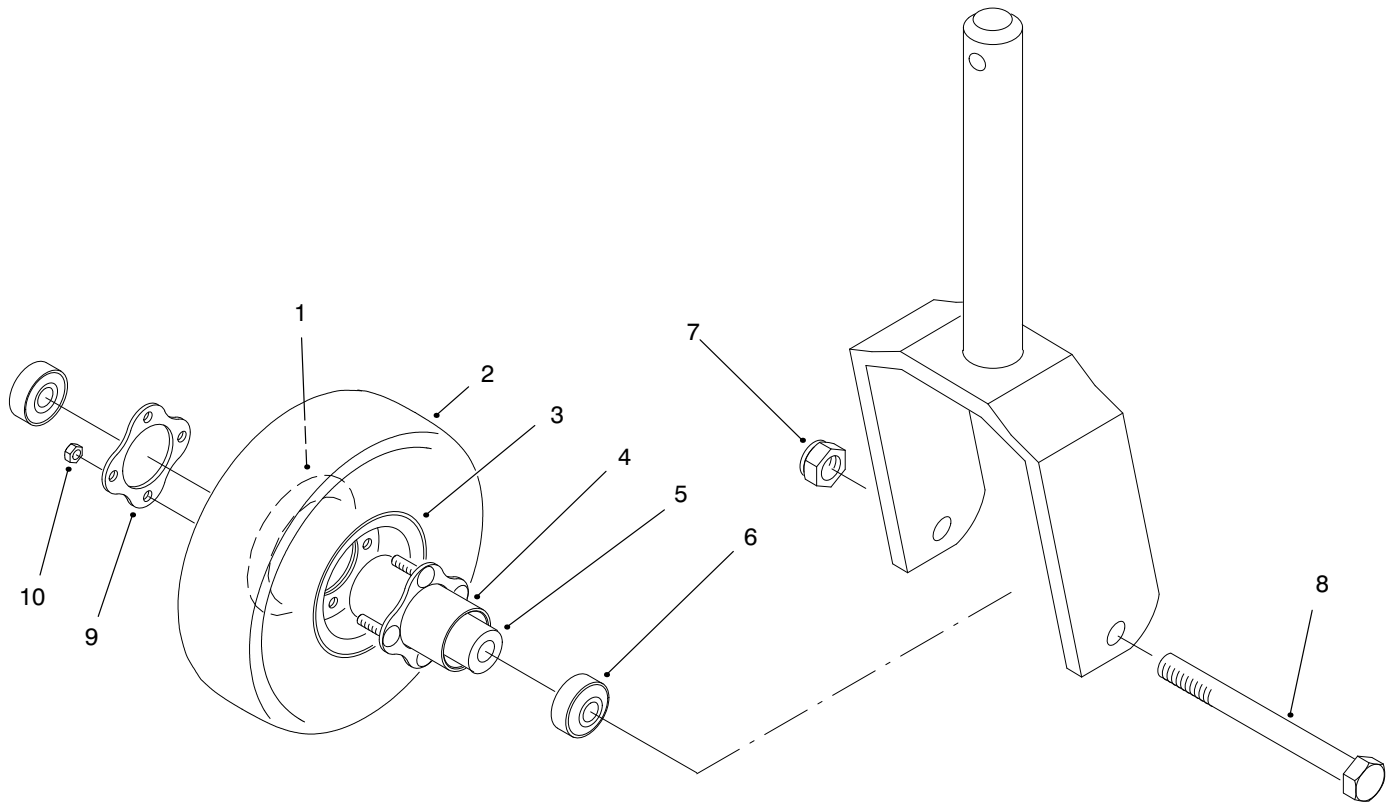
T-2038

## DRIVE SHAFT ASSEMBLY

Ref. No.	Part No.	Description	No. Used
1	322-9	Screw - Cap Hex. Hd.	2
2	32121-34	Pin - Roll	2
3	93-9963	Slip Yoke - Shaft	1
4	62-3820	Fitting - Grease	2
5	54-9180	U-Joint	2
6	62-3800	Yoke - End	1
7	302-58	Fitting - Grease	1
8	93-9966	Slip Yoke - Tube	1
9	54-9040	Yoke - End, Split	1
10	3296-29	Nut - Lock	2
11		Ring - Retaining	2
12		Bushing - Nylon	1
13	93-9985	Guard - Outer (Europe) (Incl. Ref.#11-12 & 14)	1

Ref. No.	Part No.	Description	No. Used
14	93-7283	Decal - Danger (Europe)	1
15	93-9965	Guard - Inner (Europe) (Incl. Ref. #11-12)	1
*	93-9958	Kit - Repair, Nylon (Incl. 2 Each Ref. #11-12)	1
*	93-9996	Drive Shaft Assembly (without guards) (Incl. Ref. #3-9)	1
*	93-9986	Drive Shaft Assembly (with guards) (Europe) (Incl. Ref. #3-9, 13 & 15)	1
*	92-4663	Slip Yoke Shaft Assembly (Incl. Ref. #3-6)	1

\*Not Illustrated



T-2653-1

## FOAM FILLED CASTOR WHEEL (Optional)

Ref. No.	Part No.	Description	No. Used
1	95-2741	Rim - Wheel	2
2	93-4243	Tire - 10"	2
3	93-4239	Rim - Wheel	2
4	93-5980	Hub	2
5	93-4241	Spacer - Bearing	2
6	93-4237	Bearing - Castor	2

Ref. No.	Part No.	Description	No. Used
7	3296-53	Nut - Lock	2
†8	327-24	Screw - Cap Hex. Hd.	2
9	93-4242	Plate	2
10	32128-16	Nut - Hex. Lock	8
*	93-5973	10" Foam Filled Wheel Asm. (Incl. Ref. #1-6 & 9-10)	2

\*Not Illustrated

†Must drill out hole in castor fork to 5/8" diameter

# TORO PART NUMBER INDEX

Part No.	Description	Pg. No.	Ref. No.	Qty.	Part No.	Description	Pg. No.	Ref. No.	Qty.
3-6781	Washer	3	35	8	66-6480	Washer - Flat	3	3	4
3-8514	Washer	1	16	3	67-5360	Decal - Danger	1	3	2
12-1509	Pneumatic Tire & Wheel	4	*	2	68-6710	Roller - Deck	2	42	1
14-5869	Cover - Deck R.H.	3	5	1	68-6810	Gear Case Assembly	3	11	1
14-5879	Cover - Deck L.H.	3	21	1	68-6840	Shaft - Roller	2	41	1
21-0890	V-Belt	1	14	3	68-7030	Housing	5	1	1
21-3770	Strap - Lift	3	16	1	68-7040	Shaft	5	17	1
23-1640	Bushing - TaperLock	4	53	1	68-7050	Shaft	5	19	1
23-2410	Blade - High Sail (Opt.)	2	*54	3	68-7060	Gear	5	18	1
26-1190	Plate - Reinforcement	4	59	2	68-7070	Ring - Retaining	5	7	2
26-1400	Pulley - Deck	3	13	1	68-7080	Gear	5	10	1
26-1430	Caster Arm	3	34	1	68-7280	Decal - Torque	1	23	1
26-1490	Caster Arm R.H.	3	1	1	68-8560	Bracket - Gear Box	4	58	2
26-1530	Fork - Caster, Front	4	52	2	68-9890	Cover - Gear Box Front	4	56	1
26-1760	Pulley	1	4	2	70-2560	Decal - Lube	3	9	1
26-1820	Screw - Cap Hex. Hd.	2	29	3	72-9370	Shim (.020 in.)	5	11	4
26-1840	Idler Pulley	1	2	3	75-9680	Fork - Caster, Rear	3	36	2
26-1850	Stud - Idler	1	12	1	83-4740	Bearing - Roller	4	48	2
26-1860	Spacer - Idler Pulley	1	7	2	84-2020	Outer Spindle Housing	2	34	2
26-1870	Idler Mount L.H.	1	10	1	84-2060	Pulley L.H.	1	17	1
26-1880	Spacer - Idler Mount	2	36	1	84-2070	Spindle - Outer	2	32	2
26-1990	Washer - Belleville	2	30	3	84-2080	Center Spindle Housing	2	51	1
27-1040	Spacer - 1/4	3	*	48	84-2090	Spacer R.H. Spindle	2	46	1
27-4570	Knob	3	25	2	84-5370	Spindle Center	2	47	1
27-4570	Knob	4	64	2	92-1655	Wheel - Caster - Front	4	50	2
29-5530	Blade	2	31	3	92-4663	Slip Yoke Shaft Assembly	6	*	1
36-1740	Roller - Deck	2	40	2	92-5581	Ring - Retaining	4	67	4
39-3330	Bar - Caster Clamp	3	28	2	92-5583	Washer - Cap	4	66	4
39-3340	Bracket - Clamp	3	10	1	92-5584	Spring - Compression	4	65	4
39-7450	Bracket - Clamp	3	27	1	92-7847	Decal - Warning	2	52	1
43-8480	Decal - Danger	2	25	2	92-8861	Cap - Height-of-Cut	3	30	4
49-8320	Bearing & Spacer Set	1	19	3	92-8862	Asm. - Cap, Height-of-Cut	4	*	4
51-1470	Deflector	2	26	1	93-4237	Bearing - Castor	7	6	2
51-1530	Hinge Bracket	1	21	2	93-4239	Rim - Wheel	7	3	2
51-1550	Spring	2	27	2	93-4241	Spacer - Bearing	7	5	2
54-9040	Yoke - End, Split	6	9	1	93-4242	Plate	7	9	2
54-9180	U-Joint	6	5	2	93-4243	Tire - 10	7	2	2
57-0280	Decal - 72	2	44	1	93-5973	10 Foam Filled Wheel Asm.	7	*	2
62-3310	Screw - Cap	5	15	8	93-5980	Hub	7	4	2
62-3340	Cup - Bearing	5	14	2	93-6604	Baffle - RH (Europe)	4	63	1
62-3360	Cup - Bearing	5	3	2	93-6605	Baffle - LH (Europe)	4	60	1
62-3370	Cone - Bearing	5	9	2	93-6697	Decal - Lube (Europe)	3	9	1
62-3380	Key	5	8	2	93-7181	Deck Assembly	1	5	1
62-3400	Seal	5	13	2	93-7273	Decal - Danger (Europe)	1	3	2
62-3410	Cap	5	16	2	93-7283	Decal - Danger (Europe)	6	14	1
62-3420	Gasket (.015 in.)	5	4	A/R	93-7809	Decal - Warning (Europe)	2	52	1
62-3430	Gasket (.005 in.)	5	5	A/R	93-7815	Decal - Danger (Europe)	2	25	2
62-3440	Gasket (.003 in.)	5	6	A/R	93-7817	Decal - Torque (Europe)	1	23	1
62-3490	Plug - Pipe (Solid)	5	2	4	93-7824	Decal - Danger (Europe)	1	20	2
62-3800	Yoke - End	6	6	1	93-7828	Decal - Danger (Europe)	2	24	1
62-3820	Fitting - Grease	6	4	2	93-9838	Shroud - Drive Shaft	3	15	1
62-4340	Spanner - Front	4	51	2	93-9958	Kit - Repair, Nylon	6	*	1
62-4480	Rod - Roller	2	43	2	93-9963	Slip Yoke - Shaft	6	3	1
62-5580	Bushing	3	39	8	93-9965	Guard - Inner (Europe)	6	15	1
63-0070	Spacer - 1/2	3	31	24	93-9966	Slip Yoke - Tube	6	8	1
63-1770	Spanner - Rear	3	40	2	93-9985	Guard - Outer (Europe)	6	13	1
63-8400	Wheel - Caster Rear	3	42	2	93-9986	Drive Shaft Assembly	6	*	1
63-8410	Washer	3	8	4	93-9996	Drive Shaft Assembly	6	*	1
63-8580	Bearing - Roller	3	43	2	94-1291	Bushing - Special	3	32	8
63-9750	Mount - Isolation	4	57	4	95-2741	Rim - Wheel	7	1	2
66-1260	Bracket - Knob	3	44	2	95-3082	Front Castor Wheel Asm.	4	*	1
66-1340	Decal - Danger	1	20	2	95-3084	Rear Castor Wheel Asm.	4	*	1
66-6310	Washer - Cup	3	14	2	95-3086	Castor Wheel Set (4 Wheels)	4	*	1
66-6380	Decal - Danger	2	24	1	95-3087	Blade & Belt Kit	2	*	1

\*Not Illustrated



# TORO PART NUMBER INDEX (Cont.)

Part No.	Description	Pg. Ref. No. No. Qty.	Part No.	Description	Pg. Ref. No. No. Qty.
95-3089	Spindle Asm. Kit- LH	2 * 1	3231-29	Bolt - Carriage	1 6 2
95-3090	Spindle Asm. Kit - Center	2 * 1	3233-2	Bolt - Carriage	3 46 12
95-3094	Blade & Belt Kit (Hi-Lift)	2 * 1	3234-1	Screw - Hex. Hd. Flange	1 13 24
95-3095	Spindle Asm. Kit - RH	2 * 1	3234-5	Screw - Cap Flange Hd.	4 62 7
95-6276	Deck Asm. (Europe)	1 5 1	3234-11	Screw - Hex. Hd. Flange	1 1 4
253-138	Seal - Oil	1 18 6	3247-4	Screw - Set	4 54 2
253-154	Seal - Oil	2 49 3	3253-21	Washer - Lock	3 6 4
254-94	Cone - Gear	5 12 1	3256-6	Washer - Flat	3 38 8
285-17	Plug	2 28 4	3256-24	Washer	2 33 A/R
302-5	Fitting - Grease	3 33 4	3257-5	Key - Woodruff	3 12 1
302-5	Fitting - Grease	2 48 3	3269-5	Rivet - Pop	3 45 4
302-11	Fitting - Grease	3 41 2	3290-357	Nut - Flange	1 11 6
302-40	Fitting - Grease	4 49 2	3290-357	Nut - Flange	3 17 2
302-52	Fitting - Grease	2 50 1	3290-469	Nut - Insert	2 53 4
302-58	Fitting - Grease	6 7 1	3296-29	Nut - Lock	6 10 2
322-4	Screw - Cap. Hex Hd.	2 45 2	3296-49	Nut	1 15 3
322-9	Screw - Cap Hex. Hd.	6 1 2	3296-53	Nut - Lock	7 7 2
323-4	Screw - Cap Hex Hd.	3 4 4	3296-59	Nut - Lock	3 24 4
323-7	Screw - Cap Hex. Hd.	4 64 2	32104-82	Screw - Cap Self-Tapping	3 18 2
323-12	Screw - Cap Hex. Hd.	2 37 1	32121-34	Pin - Roll	6 2 2
324-12	Screw - Cap Hex Hd.	3 2 4	32128-16	Nut - Hex. Lock	7 10 8
325-14	Screw - Cap Hex Hd.	3 29 4	32128-20	Nut - Lock, Flange Hd.	4 61 7
325-17	Screw - Cap Hex. Hd.	2 35 2	32128-21	Nut - Flange	3 7 4
325-18	Screw - Cap Hex Hd.	3 37 2	32128-21	Nut - Flange	1 8 33
325-22	Screw - Cap Hex. Hd.	4 47 2	32128-23	Nut - Lock Flange	1 22 2
327-24	Screw - Cap Hex. Hd.	7 8 2	32128-23	Nut - Lock Flange	3 26 8
3231-26	Bolt - Carriage	4 55 4	32128-25	Nut - Lock Flange	2 39 2
3231-27	Bolt - Carriage	1 9 6	32128-42	Nut - Flange	3 20 4
3231-27	Bolt - Carriage	3 19 2	32128-49	Nut - Flange	3 22 12

## PRODUCT CHANGES

In an effort to make improvements available to TORO owners as quickly as possible, minor changes are incorporated into Toro's products from time to time that do not become immediately shown in the Parts Catalog. If such a change has been made in your unit, which is not reflected in your manual, see your TORO Distributor or his Authorized TORO Service Dealer for information and part numbers.

## IDENTIFICATION AND ORDERING

### MODEL AND SERIAL NUMBERS

The model number and serial number of this product is stamped on a plate which is located on the rear left hand corner of the cutting deck. In any correspondence concerning this product, supply model and serial numbers to assure that correct information and replacement parts are obtained.

To order replacement parts from an Authorized TORO Service Dealer, supply the following information:

1. Model and serial number of the Side Discharge Cutting Unit.
2. Part number, description, and the quantity of part(s) desired.

**NOTE:** Do not order by reference number if a parts catalog is being used; use the PART NUMBER.

# TABLE OF CONTENTS

Description	Page	Description	Page
Deck Assembly .....	1–2	Drive Shaft Assembly .....	6
Carrier Frame Assembly .....	3–4	Foam Filled Castor Wheel (Optional) .....	7
Gear Box Assembly .....	5	TORO Part Number Index .....	8–9

# MAINTENANCE RECORD

Date								

# MAINTENANCE RECORD

Date								