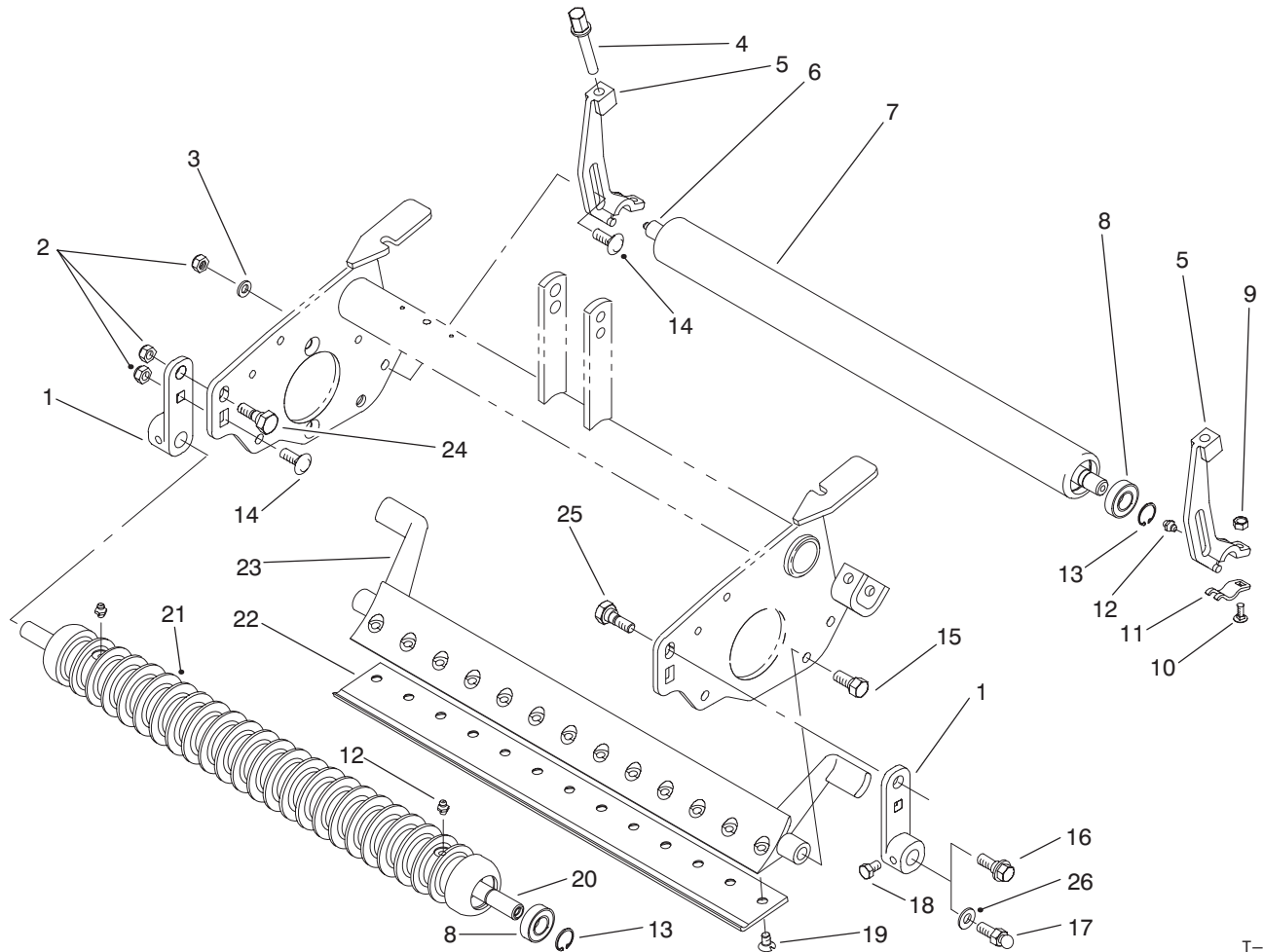




MODEL NO. 04480-60001 & UP
MODEL NO. 04481-60001 & UP

PARTS
CATALOG

8 & 11 BLADE 4 BOLT CUTTING UNIT
For Greensmaster[®] 3200



ROLLERS & BEDBAR ASSEMBLY

| Ref. No. | Part No. | Description | No. Used |
|----------|-----------|------------------------------------|----------|
| 1 | 93-2473 | Bracket - Front | 2 |
| 2 | 33025-00 | Nut - Lock | 6 |
| 3 | 3256-46 | Washer - Flat | 2 |
| 4 | 93-2523 | Asm. - Height-of-Cut Adj. | 2 |
| 5 | 93-2455 | Bracket - Height-of-Cut Adjustment | 2 |
| 6 | 93-2466 | Shaft | 1 |
| 7 | 93-2467 | Tube - Roller | 1 |
| 8 | 93-2559 | Bearing | 4 |
| 9 | 33023-00 | Nut - Lock | 2 |
| 10 | 33123-020 | Screw - Carriage | 2 |
| 11 | 94-1382 | Collar - Height-of-Cut | 2 |
| 12 | 302-5 | Fitting - Grease | 4 |
| 13 | 93-2525 | Ring - Retaining | 4 |
| 14 | 33125-025 | Screw - Carriage | 4 |
| 15 | 217-74 | Bolt - Wheel | 2 |
| 16 | 93-2364 | Bolt - Shoulder | 2 |

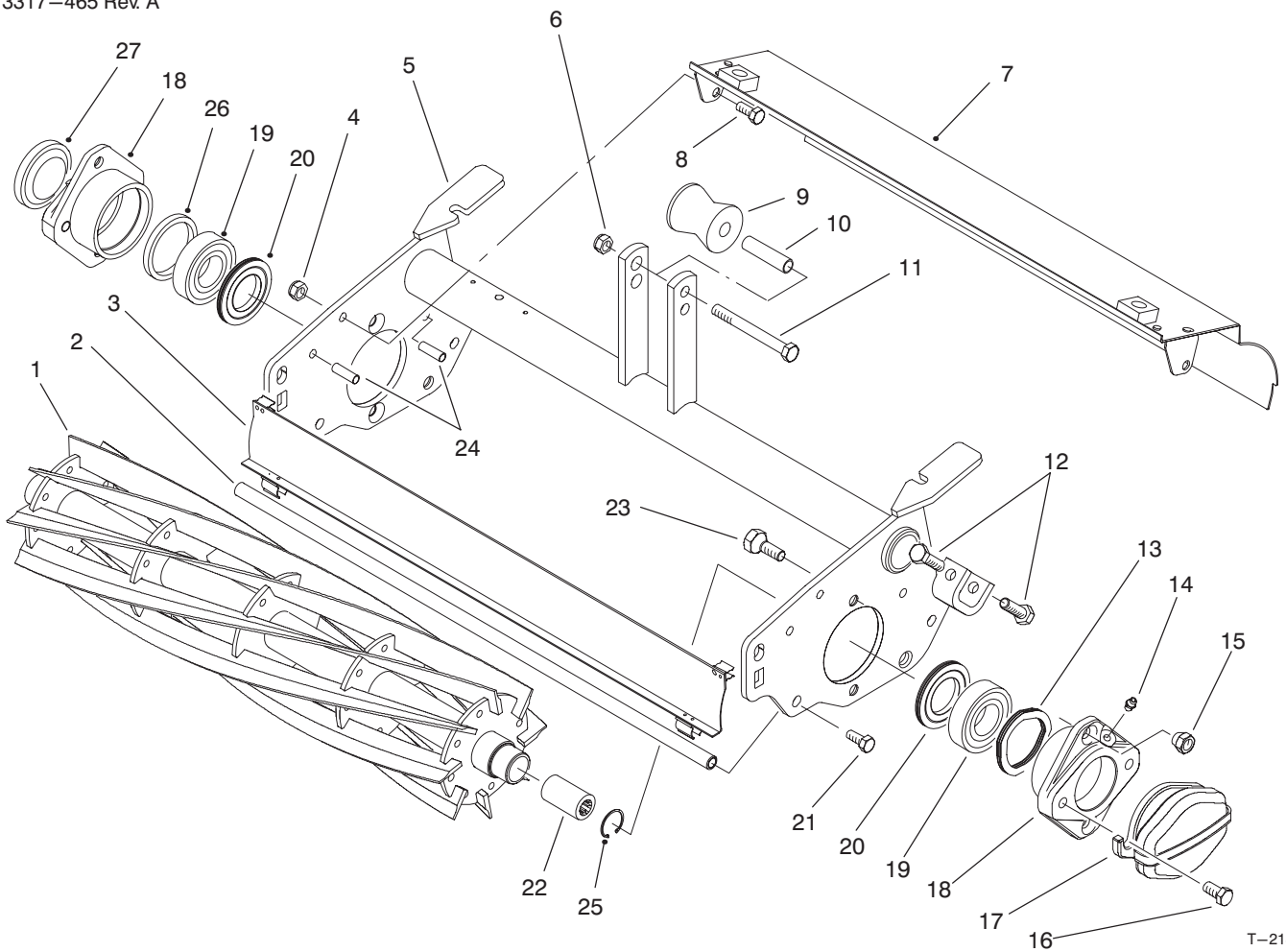
| Ref. No. | Part No. | Description | No. Used |
|----------|-----------|--|----------|
| 17 | 94-2958 | Stud - Ball (Used on old suspensions) | 2 |
| 18 | 33113-012 | Screw - HH | 2 |
| 19 | 57-4910 | Screw - Special | 13 |
| 20 | 93-2470 | Shaft - Roller, Wiehle | 1 |
| 21 | 93-2469 | Roller - Wiehle | 1 |
| 22 | 93-2576 | Bedbar | 1 |
| 23 | 93-4263 | Knife - Bed, Tournament | 1 |
| 24 | 93-2573 | Bolt - Eccentric | 1 |
| 25 | 93-2572 | Bolt - Shoulder | 1 |
| 26 | 3254-6 | Washer - Lock, Int. | 2 |
| * | 93-2465 | Asm. - Roller, Rear (Incl. Ref. #6-8, 12 & 13) | 1 |
| * | 93-2468 | Asm. - Roller, Wiehle (Incl. Ref. #8, 12-13, & 20-21) | 1 |

*Not Illustrated

Note: Quantity is for 1 Cutting Unit.

© The TORO Company - 1995
All Rights Reserved

TPS



T-2186

REEL & SHIELDS ASSEMBLY

| Ref. No. | Part No. | Description | No. Used |
|----------|-----------|----------------------|----------|
| 1 | 94-4356 | Reel WA. - 8 Blade | 1 |
| * | 94-4357 | Reel WA. - 11 Blade | 1 |
| 2 | 93-2477 | Rod - Shield | 1 |
| 3 | 93-2475 | Asm. - Shield, Front | 1 |
| 4 | 33024-00 | Nut - Lock | 2 |
| 5 | 93-2490 | Frame WA. | 1 |
| 6 | 33025-00 | Nut - Lock | 1 |
| 7 | 93-2481 | Asm. - Shield, Rear | 1 |
| 8 | 33114-020 | Screw - HHF | 2 |
| 9 | 93-2463 | Roller - Lift | 1 |
| 10 | 93-2464 | Spacer - Roller | 1 |
| 11 | 33115-080 | Screw - HH | 1 |
| 12 | 33114-030 | Screw - HH | 4 |
| 13 | 94-4543 | Spring - Flat Wire | 1 |

| Ref. No. | Part No. | Description | No. Used |
|----------|-----------|------------------------|----------|
| 14 | 302-5 | Fitting - Grease | 2 |
| 15 | 93-2454 | Nut - Taper | 4 |
| 16 | 93-2569 | Screw - HHF | 4 |
| 17 | 93-2570 | Weight - Counter | 1 |
| 18 | 94-4545 | Housing - Bearing | 2 |
| 19 | 93-2489 | Bearing | 2 |
| 20 | 93-2483 | Seal - Grease | 2 |
| 21 | 33115-20 | Screw - HHF | 2 |
| 22 | 94-4507 | Coupler - Drive | 2 |
| 23 | 94-1341 | Screw - TPRD | 4 |
| 24 | 32121-123 | Pin - Spring | 4 |
| 25 | 32120-37 | Ring - Retaining, Int. | 1 |
| 26 | 94-4544 | Spacer - Bearing | 1 |
| 27 | 2410-30 | Cap - Plastic | 1 |

*Not Illustrated

Note: Quantity is for 1 Cutting Unit.