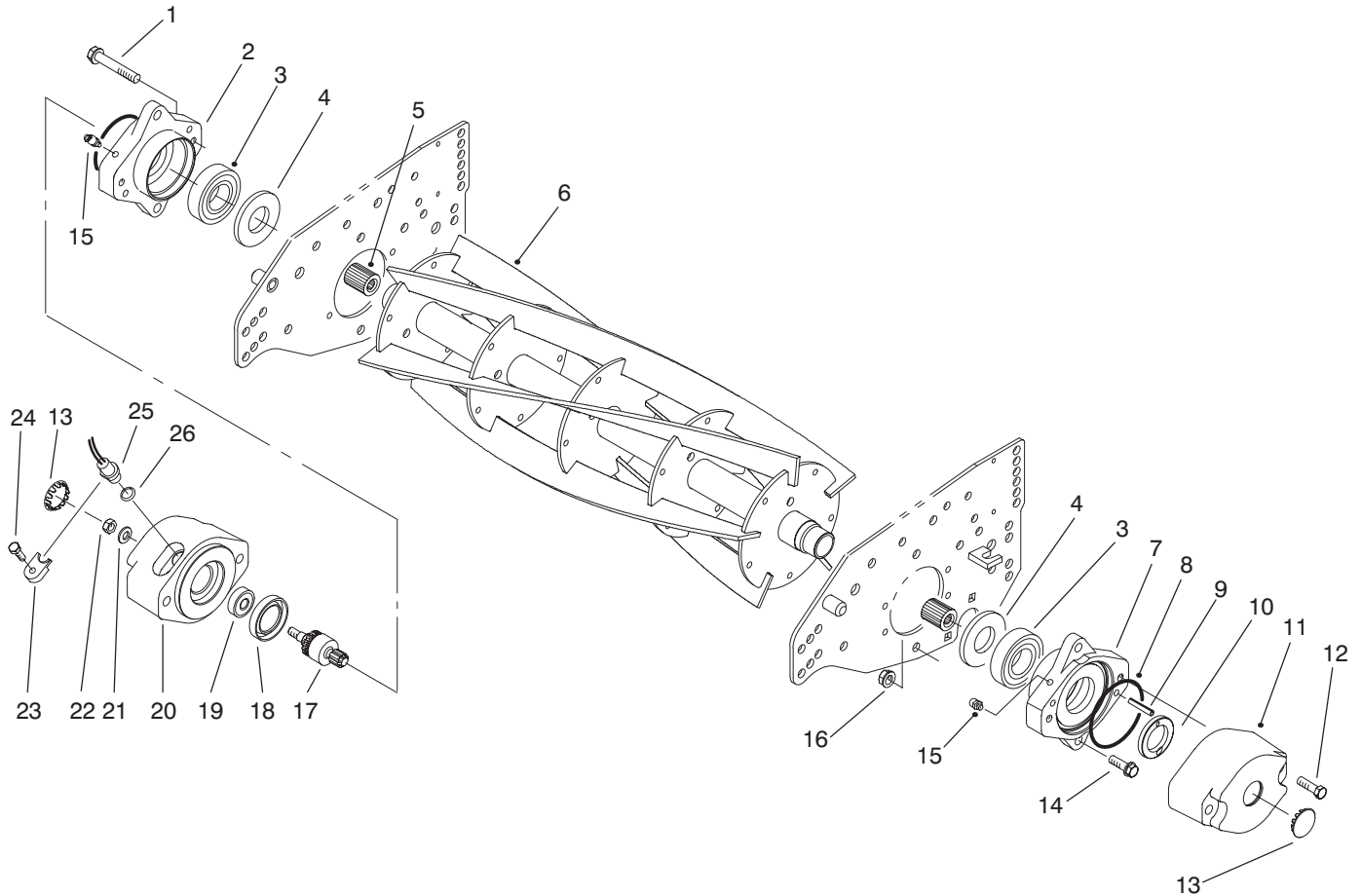




MODEL NO. 03854-50001 & UP MODEL NO. 03856-50001 & UP	PARTS CATALOG
5 & 11 BLADE REELS REELMASTER 6500D/6700D	



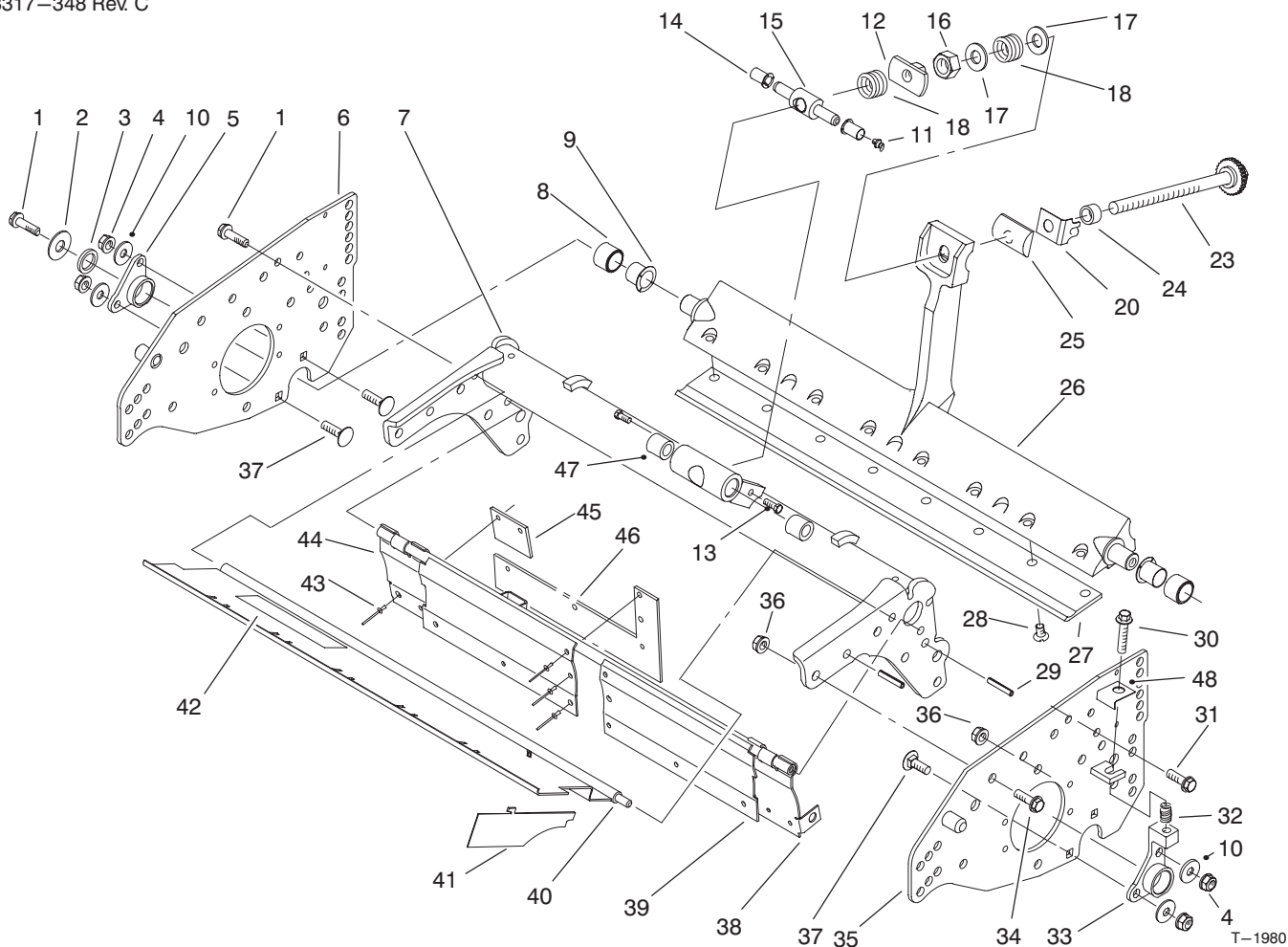
T-1979

REEL & BEARING HOUSING ASSEMBLY

Ref. No.	Part No.	Description	No. Used
1	33105-060	Screw - HHF	1
2	93-9794	Housing - Bearing, RH	1
3	93-2489	Bearing	2
4	93-2483	Seal - Grease	2
5	93-9790	Insert - Splined	2
6	93-7520	Reel W.A. Model 03854	1
*	93-7521	Reel W.A. Model 03856	1
7	93-9795	Housing - Bearing, LH	1
8	93-9783	O-Ring	2
9	32121-69	Pin - Roll	4
10	93-9786	Nut - Bearing Adj.	1
11	93-2888	Weight - End	1
12	93-7522	Screw - HH	2
13	93-3094	Plug - Cap	2
14	33105-030	Screw - HHF	4
15	302-11	Fitting - Grease 45°	2
16	33025-00	Nut - Lock	4

Ref. No.	Part No.	Description	No. Used
17	93-3085	Asm. - Shaft, Magnet	1
18	253-165	Seal - Outer	1
19	93-2956	Bearing	1
20	93-3080	Weight - Housing, End	1
21	3256-23	Washer - Flat	1
22	33024-00	Nut - Lock	1
23	93-3088	Clamp	1
24	33103-020	Screw - HH	1
25	93-3082	Sensor - Speed	1
26	237-30	O-Ring	1
*	93-3076	Asm. - Weight, End (Incl. Ref. #13, & 17-22) Shipped with Traction Unit	2
NOTE: Ref. #8 (Qty. 10) & Ref. #11, (Qty. 3) & #23-26 (Qty. 2) Shipped with Traction Unit.			

*Not Illustrated



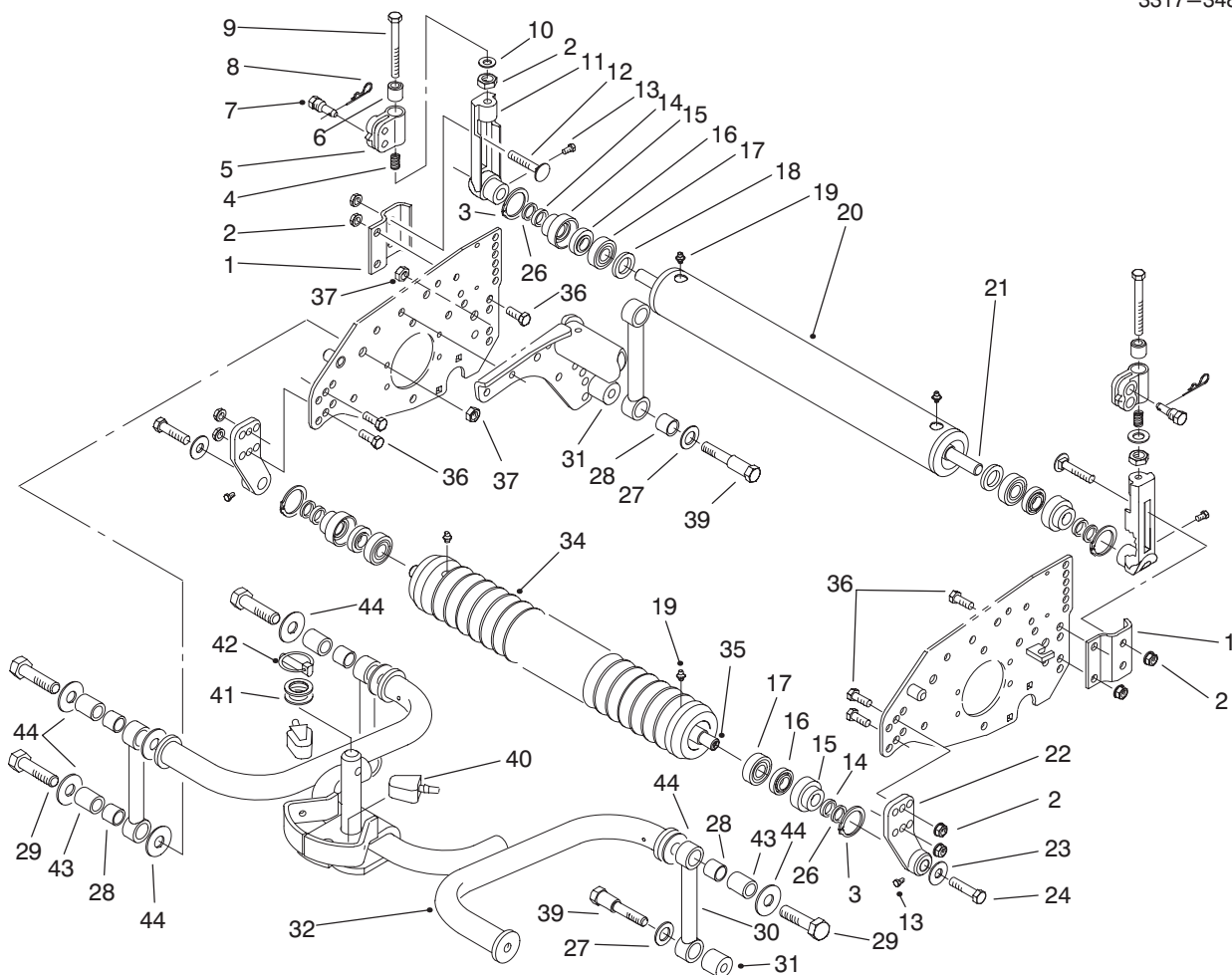
T-1980

FRAME & BEDBAR ASSEMBLY

Ref. No.	Part No.	Description	No. Used
1	33104-020	Screw - HHF	3
2	3256-35	Washer	1
3	93-7510	Ring - Quad	1
4	33024-00	Nut - Lock	4
5	93-2513	Pivot Hub RH	1
6	93-2981	Sideplate WA. - RH	1
7	93-9769	Reel Frame WA.	1
8	93-7501	Bushing Assembly	2
9	93-7502	Bushing - Flange	2
10	33094-00	Washer - Flat	4
11	302-18	Fitting - Grease, Str.	1
12	93-9780	SPA Washer WA.	1
13	33104-025	Screw - HH	2
14	52-2890	Bushing - Plastic	2
15	57-5260	Pivot Screw Adj.	1
16	3296-62	Nut - Lock	1
17	29-8910	Washer	2
18	93-2915	Spring - Compression	2
20	93-9767	Arm - Spring	1
23	93-2957	Bedbar Adjuster Assy.	1
24	93-2959	Spacer - Adjuster	1
25	93-2892	Pivot - Bedbar, Man. Adj.	1
26	93-2854	Bedbar	1

Ref. No.	Part No.	Description	No. Used
27	93-9774	Bedknife - Reel	1
28	57-4910	Screw - Special	8
29	32121-36	Pin - Roll	4
30	93-2571	Screw	1
31	33104-040	Screw - HHF	1
32	93-2516	Spring - Compression	1
33	93-2512	Pivot Hub LH	1
34	33105-025	Screw - HHF	8
35	93-2982	Sideplate WA. - LH	1
36	33025-00	Nut - Lock	8
37	94-2738	Screw - Carriage	4
38	93-3008	Shield - LT	1
39	93-2996	Rear Grass Shield WA.	1
40	93-9761	Grass Shield WA.	1
41	93-9759	Deflector - Grass Shield	5
42	67-7960	Decal - Danger, Reel	1
43	3295-48	Rivet	14
44	93-2998	Shield - RT	1
45	93-3012	Flap - Side	2
46	93-3011	Flap - Bottom	2
47	62-5510	Bushing	2
48	93-9784	Clip - Bedbar Adj.	1

*Not Illustrated



T-1981

ROLLERS & 4 BAR FRAME ASSEMBLY

Ref. No.	Part No.	Description	No. Used
1	61-0910	Bracket - Angle	2
2	33025-00	Nut - Lock	12
3	32120-62	Snap Ring	4
4	93-2921	Spring - Compression HOC	2
5	93-2902	Support - HOC, Rear	2
6	93-2932	Spacer	2
7	93-2906	Pin - HOC	2
8	3290-467	Pin - Cotter, Hair	2
9	93-7500	Screw - HH	2
10	93-7509	Washer - Special	2
11	93-2904	Bracket - HOC, Rear	2
12	33125-030	Screw - Carriage	2
13	93-9757	Screw - HH	4
14	253-70	Seal - Oil	4
15	93-1252	Seal - Outer	4
16	93-1251	Seal - Inner	4
17	109966	Bearing - Ball	4
18	93-3007	Seal - Oil	4
19	302-5	Fitting - Grease, Straight	4
20	93-1253	Tube Assy. - Rear Roller	1
21	93-1256	Shaft - Rear Roller	1
22	93-2895	HOC Bracket WA. - Frt. LH	1
23	3290-455	Washer - Belleville	2
24	33115-016	Screw - HH	2

Ref. No.	Part No.	Description	No. Used
26	93-2931	Washer - Roller	4
27	93-3001	Washer	2
28	93-3002	Bushing	8
29	94-2702	Bolt	6
30	93-3087	Link - 4 Bar	4
31	93-9775	Spacer	2
32	93-7407	Frame WA. - 4 Bar	1
34	93-2885	Roller - Wiehle	1
35	93-2887	Shaft - Wiehle Roller	1
36	33105-025	Screw - HHF	8
37	94-4307	Nut - Lock	4
38	93-2898	HOC Bracket WA. - Frt. RH	1
39	93-9777	Bolt - Shoulder, Long	2
40	93-9173	Bumper	2
41	3256-42	Washer - Flat	2
42	283-71	Pin - Lynch	1
43	94-2700	Spacer - Link	6
44	94-2701	Washer - Hardened	12
*	93-1250	Rear Roller Assembly (Incl. Ref. #3, 14-21 & 26)	1
*	93-2884	Wiehle Roller Assembly (Incl. Ref. #3, 14-19, 25 26 & 34-35)	1

*Not Illustrated

TORO PART NUMBER INDEX

Part No.	Description	Pg. No.	Ref. No.	Qty.	Part No.	Description	Pg. No.	Ref. No.	Qty.
109966	Bearing – Ball	3	17	4	93-7510	Ring – Quad	2	3	1
29-8910	Washer	2	17	2	93-7520	Reel W.A. Model 03854	1	6	1
52-2890	Bushing – Plastic	2	14	2	93-7521	Reel W.A. Model 03856	1	*	1
57-4910	Screw – Special	2	28	8	93-7522	Screw – HH	1	12	2
57-5260	Pivot Screw Adj.	2	15	1	93-9173	Bumper	3	40	2
61-0910	Bracket – Angle	3	1	2	93-9757	Screw – HH	3	13	4
62-5510	Bushing	2	47	2	93-9759	Deflector – Grass Shield	2	41	5
67-7960	Decal – Danger, Reel	2	42	1	93-9761	Grass Shield WA.	2	40	1
93-1250	Rear Roller Assembly	3	*	1	93-9767	Arm – Spring	2	20	1
93-1251	Seal – Inner	3	16	4	93-9769	Reel Frame WA.	2	7	1
93-1252	Seal – Outer	3	15	4	93-9774	Bedknife – Reel	2	27	1
93-1253	Tube Assy. – Rear Roller	3	20	1	93-9775	Spacer	3	31	2
93-1256	Shaft – Rear Roller	3	21	1	93-9777	Bolt – Shoulder, Long	3	39	2
93-2483	Seal – Grease	1	4	2	93-9780	SPA Washer WA.	2	12	1
93-2489	Bearing	1	3	2	93-9783	O-Ring	1	8	2
93-2512	Pivot Hub LH	2	33	1	93-9784	Clip – Bedbar Adj.	2	48	1
93-2513	Pivot Hub RH	2	5	1	93-9786	Nut – Bearing Adj.	1	10	1
93-2516	Spring – Compression	2	32	1	93-9790	Insert – Splined	1	5	2
93-2571	Screw	2	30	1	93-9794	Housing – Bearing, RH	1	2	2
93-2854	Bedbar	2	26	1	93-9795	Housing – Bearing, LH	1	7	1
93-2884	Wiehle Roller Assembly	3	*	1	94-2700	Spacer – Link	3	43	6
93-2885	Roller – Wiehle	3	34	1	94-2701	Washer – Hardened	3	44	12
93-2887	Shaft – Wiehle Roller	3	35	1	94-2702	Bolt	3	29	6
93-2888	Weight – End	1	11	1	94-2738	Screw – Carriage	2	37	4
93-2892	Pivot – Bedbar, Man. Adj.	2	25	1	94-4307	Nut – Lock	3	37	4
93-2895	HOC Bracket WA. – Frt. LH	3	22	1	237-30	O-Ring	1	26	1
93-2898	HOC Bracket WA. – Frt. RH	3	38	1	253-70	Seal – Oil	3	14	4
93-2902	Support – HOC, Rear	3	5	2	253-165	Seal – Outer	1	18	1
93-2904	Bracket – HOC, Rear	3	11	2	283-71	Pin – Lynch	3	42	1
93-2906	Pin – HOC	3	7	2	302-5	Fitting – Grease, Straight	3	19	4
93-2915	Spring – Compression	2	18	2	302-11	Fitting – Grease 45°	1	15	2
93-2921	Spring – Compression HOC	3	4	2	302-18	Fitting – Grease, Str.	2	11	1
93-2931	Washer – Roller	3	26	4	3256-23	Washer – Flat	1	21	1
93-2932	Spacer	3	6	2	3256-35	Washer	2	2	1
93-2956	Bearing	1	19	1	3256-42	Washer – Flat	3	41	2
93-2957	Bedbar Adjuster Assy.	2	23	1	3290-455	Washer – Belleville	3	23	2
93-2959	Spacer – Adjuster	2	24	1	3290-467	Pin – Cotter, Hair	3	8	2
93-2981	Sideplate WA. – RH	2	6	1	3295-48	Rivet	2	43	14
93-2982	Sideplate WA. – LH	2	35	1	3296-62	Nut – Lock	2	16	1
93-2996	Rear Grass Shield WA.	2	39	1	32120-62	Snap Ring	3	3	4
93-2998	Shield – RT	2	44	1	32121-36	Pin – Roll	2	29	4
93-3001	Washer	3	27	2	32121-69	Pin – Roll	1	9	4
93-3002	Bushing	3	28	8	33024-00	Nut – Lock	2	4	4
93-3007	Seal – Oil	3	18	4	33024-00	Nut – Lock	1	22	1
93-3008	Shield – LT	2	38	1	33025-00	Nut – Lock	3	2	12
93-3011	Flap – Bottom	2	46	2	33025-00	Nut – Lock	1	16	4
93-3012	Flap – Side	2	45	2	33025-00	Nut – Lock	2	36	8
93-3080	Weight – Housing, End	1	20	1	33094-00	Washer – Flat	2	10	4
93-3082	Sensor – Speed	1	25	1	33103-020	Screw – HH	1	24	1
93-3085	Asm. – Shaft, Magnet	1	17	1	33104-020	Screw – HHF	2	1	3
93-3087	Link – 4 Bar	3	30	4	33104-025	Screw – HH	2	13	2
93-3088	Clamp	1	23	1	33104-040	Screw – HHF	2	31	1
93-3094	Plug – Cap	1	13	2	33105-025	Screw – HHF	2	34	8
93-7407	Frame WA. – 4 Bar	3	32	1	33105-025	Screw – HHF	3	36	8
93-7500	Screw – HH	3	9	2	33105-030	Screw – HHF	1	14	4
93-7501	Bushing Assembly	2	8	2	33105-060	Screw – HHF	1	1	1
93-7502	Bushing – Flange	2	9	2	33115-016	Screw – HH	3	24	2
93-7509	Washer – Special	3	10	2	33125-030	Screw – Carriage	3	12	2

*Not Illustrated