



## 48" RECYCLER® KIT

MODEL NO. 79190

INSTALLATION  
INSTRUCTIONS

**Fits:** Model 78260 with s\n below 9704310 Lawn & Garden Tractor-Mowers  
 Model 78268 with s\n below 9702555 Lawn & Garden Tractor-Mowers  
 Model 78360 with s\n below 9704083 Garden Tractor-Mowers  
 Model 78368 with s\n below 9701140 Garden Tractor-Mowers

### Loose Parts

**Note:** Use the chart below to identify parts used for assembly.

| DESCRIPTION                         | QTY. | USE   |
|-------------------------------------|------|---|
| Baffle-front                        | 1    | Install front and discharge baffles and kickers |
| Baffle-discharge                    | 1    |   |
| Carriage bolt 5/16"-18 x 1" (25 mm) | 8    |   |
| Bolt 5/16" 18 x 1" (25 mm)          | 2    |   |
| Baffle-rear right                   | 1    |   |
| Baffle-rear left                    | 1    |   |
| Carriage bolt 3/8"- 16 x 1" (25 mm) | 2    |   |
| Locknut 3/8"-16                     | 2    |   |
| Locknut 5/16"-18                    | 8    |   |
| Kicker                              | 2    | Install kickers                                 |
| Spacer                              | 2    |   |
| Bolt 5/16" 18 x 1" (25 mm)          | 2    |   |
| Locknut 5/16"-18                    | 2    |   |
| Blade                               | 3    | Install blades and decals                       |
| Decal-Danger-text                   | 1    |   |
| Decal-Danger-graphic                | 1    |   |
| Decal-Recycler®                     | 1    |   |

**Note:** Care has been taken in locating Recycler® in the mower so mounting holes will not interfere with existing components. Before drilling mounting holes for installation check that there will be no interference with other mower parts. If necessary for clearance, recycler mounting holes may be moved slightly. Move as little as possible to maintain maximum performance.

## Pre-Installation

1. Remove mower unit (see Operator's Manual for instructions).
2. Thoroughly clean the mower. All debris must be removed to ensure baffles will fit properly against mower.

**Note:** Some model mowers may have hardware that interferes with baffles.

3. Repair all bent or damaged areas of mower and replace any missing parts.
4. Tip mower upside down and block up ends to ease installation.

## Install Recycler<sup>®</sup> Blade(s)

1. Remove blades from spindles. Save for use when side discharging.
2. Install the thick washer, blade, thin washer, and the blade nut (Fig. 1).

**IMPORTANT: The curved part of the blade must be pointing toward the top of the mower to assure proper cutting.**

3. Tighten the blade nut to 80-100 ft-lb (109-136 Nm).

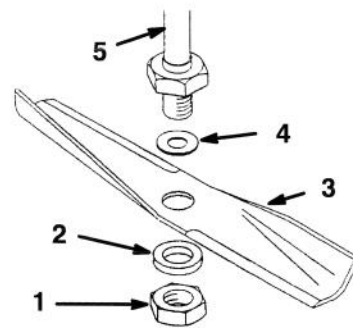


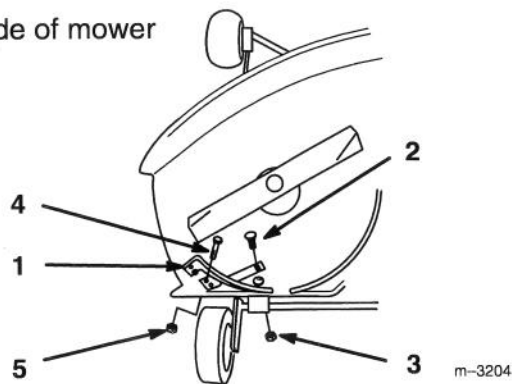
Figure 1

- |                  |                   |
|------------------|-------------------|
| 1. Nut           | 4. Washer - thick |
| 2. Washer - thin | 5. Spindle        |
| 3. Blade         |                   |

## Install Rear Right Baffle— Garden Tractor Mowers

1. Remove plate from right rear of mower at discharge opening. Discard plate and hardware.
2. Remove and discard, upper carriage bolt and locknut securing right wheel bracket to mower.
3. Locate rear right baffle tab over upper wheel bracket hole and install new 3/8-16 x 1" (26 mm) carriage bolt, with head on the inside.
4. Secure bolts with 3/8" locknut (Fig. 2).
5. Place (2) 5/16-18 x 1" (26 mm) bolts through baffle and holes in mower. Secure with (2) 5/16" locknuts (Fig. 2).

Right side of mower



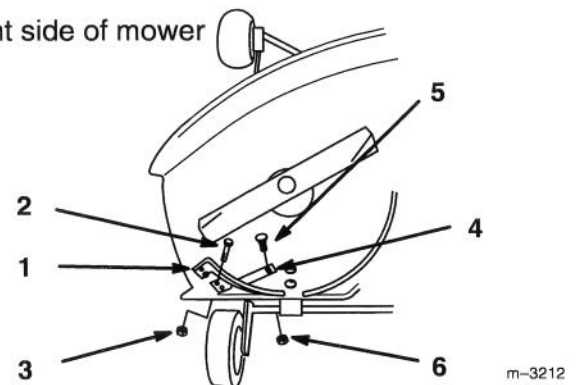
**Figure 2**

- |                                      |                              |
|--------------------------------------|------------------------------|
| 1. Rear right baffle                 | 3. Locknut 3/8"              |
| 2. Carriage bolt 3/8-16 x 1" (26 mm) | 4. Bolt 5/16-18 x 1" (26 mm) |
|                                      | 5. Locknut 5/16"             |

## Install Rear Right Baffle—Lawn & Garden Tractor Mowers

1. Remove plate from right rear of mower at discharge opening. Discard plate and hardware.
2. Place (2) 5/16-18 x 1" (26 mm) bolts through baffle and existing holes in mower. Secure with (2) 5/16" locknuts (Fig. 3).
3. Using the baffle as a guide, drill a 13/32" hole where the baffle tab aligns with the rear right side of the mower (Fig. 3).
4. Locate rear right baffle tab over squared off hole and install new 3/8-16 x 1" (26 mm) carriage bolt, with head on the inside. Secure with 3/8" locknut (Fig. 3).

Right side of mower



**Figure 3**

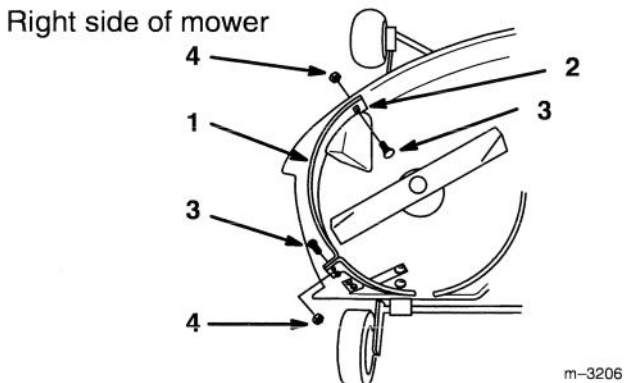
- |                              |                                      |
|------------------------------|--------------------------------------|
| 1. Rear right baffle         | 5. Carriage bolt 3/8-16 x 1" (26 mm) |
| 2. Bolt 5/16-18 x 1" (26 mm) | 6. Locknut 3/8"                      |
| 3. Locknut 5/16"             |                                      |
| 4. Drill 13/32" hole         |                                      |

## Install Discharge Baffle

5. Position discharge baffle in discharge opening. Engage pin on flange into rear right baffle (Fig. 4).
6. Align baffle with contour of mower and clamp against inside front of mower.

**IMPORTANT: Before drilling holes, rotate blades to assure there is no blade contact with baffle. Adjust baffle as required.**

7. Secure flange hole of baffle to rear discharge baffle with a 5/16-18 x 1" (26 mm) bolt and 5/16" locknut (Fig. 4).
8. Using the baffle as a guide, drill a 11/32" hole in the right front of the mower (Fig. 4).
9. Place a 5/16-18 x 1" (26 mm) carriage bolt through baffle, with head on the inside. Secure with 5/16" locknut (Fig. 4).



**Figure 4**

- |                      |                                       |
|----------------------|---------------------------------------|
| 1. Discharge baffle  | 3. Carriage bolt 5/16-18 x 1" (26 mm) |
| 2. Drill 11/32" hole | 4. Locknut 5/16"                      |
-

## Install Front Baffle

10. Place front baffle inside mower and align with front contour of mower and center lines between blades. Clamp left and right sides (Fig. 5).

**Note:** Leave 1/4" minimum space between front and discharge baffles to ease removal for side discharge operation

**IMPORTANT:** Before drilling holes, rotate blades to assure there is no blade contact with baffle. Adjust baffle as required.

11. Using the baffle as a guide, drill (5) 11/32" holes in the mower at the ends and mounting brackets of baffle (Fig. 5).
12. Place 5/16-18 x 1" (26 mm) carriage bolts through baffle, with heads on the inside. Secure with 5/16" locknuts (Fig. 5).

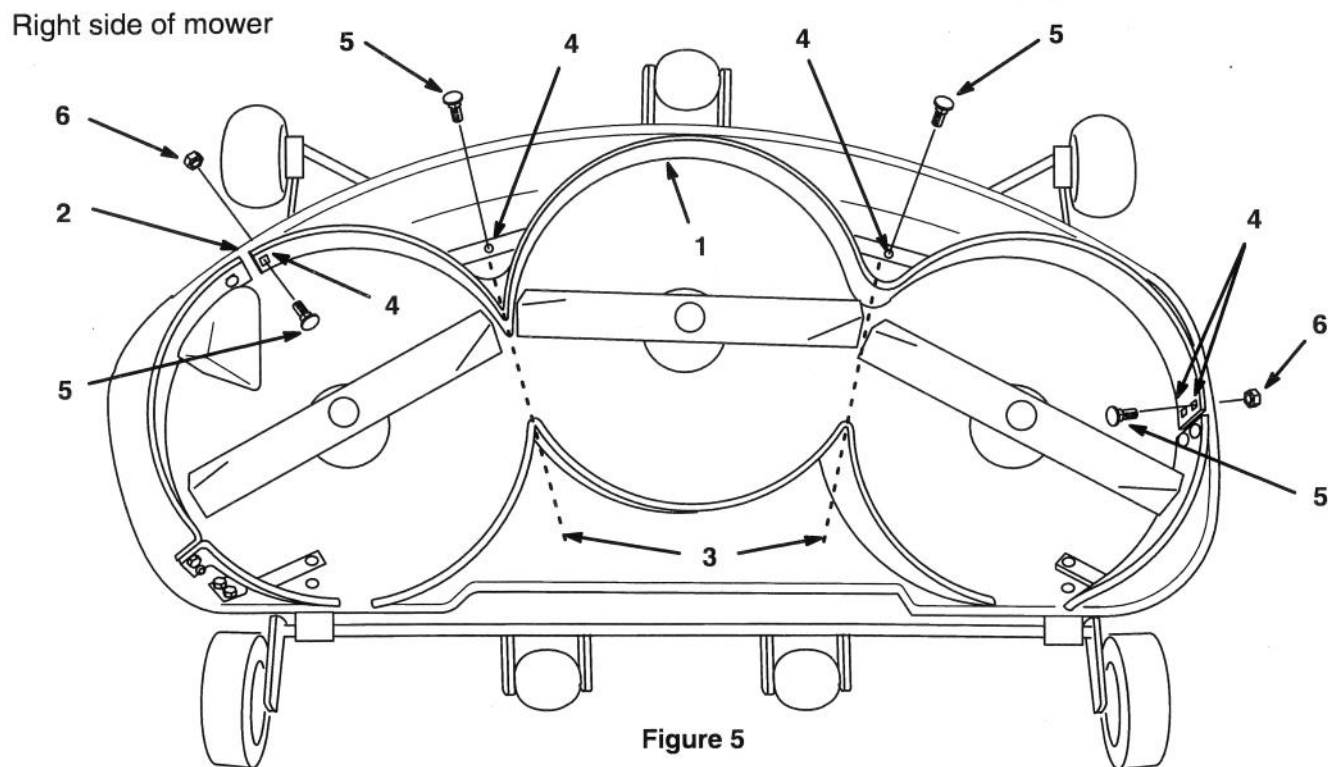


Figure 5

- |                       |                                       |
|-----------------------|---------------------------------------|
| 1. Front baffle       | 5. Carriage bolt 5/16-18 x 1" (26 mm) |
| 2. Space-1/4" minimum | 6. Locknut 5/16"                      |
| 3. Center line        |                                       |
| 4. Drill 11/32" hole  |                                       |

m-3207

## Install Rear Left Baffle—Garden Tractor Mowers

1. Remove and discard, upper carriage bolt and locknut securing left wheel bracket to mower.
2. Locate rear left baffle tab over upper wheel bracket hole and install new 3/8-16 x 1" (26 mm) carriage bolt, with head on the inside. Secure with 3/8" locknut (Fig. 6).
3. Align baffle with contour of mower and clamp against left inside of mower.

**IMPORTANT: Before drilling holes, rotate blades to assure there is no blade contact with baffle. Adjust baffle as required.**

4. Using the baffle as a guide, drill (2) 11/32" holes in the left side of the mower (Fig. 6).
5. Place (2) 5/16-18 x 1" (26 mm) carriage bolts through baffle, with heads on the inside. Secure with 5/16" locknuts (Fig. 6).

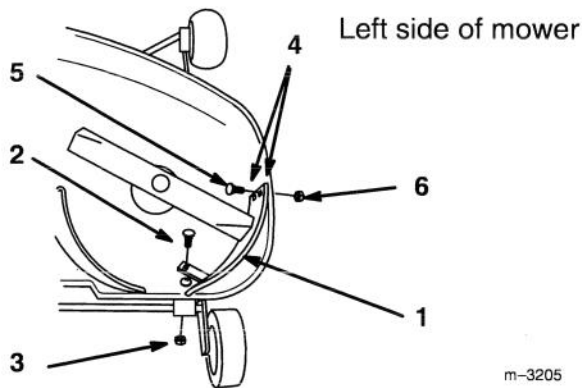


Figure 6

- |                                      |                                       |
|--------------------------------------|---------------------------------------|
| 1. Rear left baffle                  | 4. Drill 11/32" hole                  |
| 2. Carriage bolt 3/8-16 x 1" (26 mm) | 5. Carriage bolt 5/16-18 x 1" (26 mm) |
| 3. Locknut 3/8"                      | 6. Locknut 5/16"                      |

## Install Rear Left Baffle—Lawn & Garden Tractor Mowers

1. Align baffle with contour of mower and clamp against left inside of mower.

**IMPORTANT: Before drilling holes, rotate blades to assure there is no blade contact with baffle. Adjust baffle as required.**

2. Using the baffle as a guide, drill (2) 11/32" holes in the left side of the mower (Fig. 7).
3. Place (2) 5/16-18 x 1" (26 mm) carriage bolts through baffle, with heads on the inside. Secure with 5/16" locknuts (Fig. 7).
4. Using the baffle as a guide, drill a 13/32" hole at tab (Fig. 7).
5. Locate rear left baffle tab over squared off hole and install new 3/8-16 x 1" (26 mm) carriage bolt, with head on the inside. Secure with 3/8" locknut (Fig. 7).

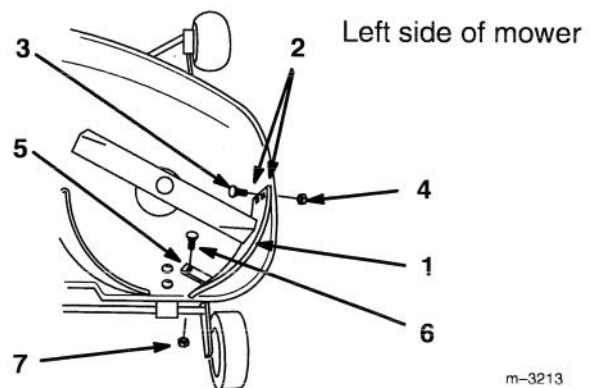


Figure 7

- |                                       |                                      |
|---------------------------------------|--------------------------------------|
| 1. Rear left baffle                   | 5. Drill 13/32" hole                 |
| 2. Drill 11/32" hole                  | 6. Carriage bolt 3/8-16 x 1" (26 mm) |
| 3. Carriage bolt 5/16-18 x 1" (26 mm) | 7. Locknut 3/8"                      |
| 4. Locknut 5/16"                      |                                      |

## Install Kickers

6. Place kickers in center and left chambers so points align with spindle center lines (Fig. 8).
7. Hold kickers tight against deck baffle and mark hole locations (Fig. 8).
8. Remove kickers and drill (2) 11/32" holes in deck (Fig. 8).
9. Place kickers with 3/8–16 x 1" (26 mm) bolt inside mower and spacer between kicker and mower. Secure with 3/8" lock nut on top of mower (Fig. 8).
10. Tighten all mounting hardware securely.

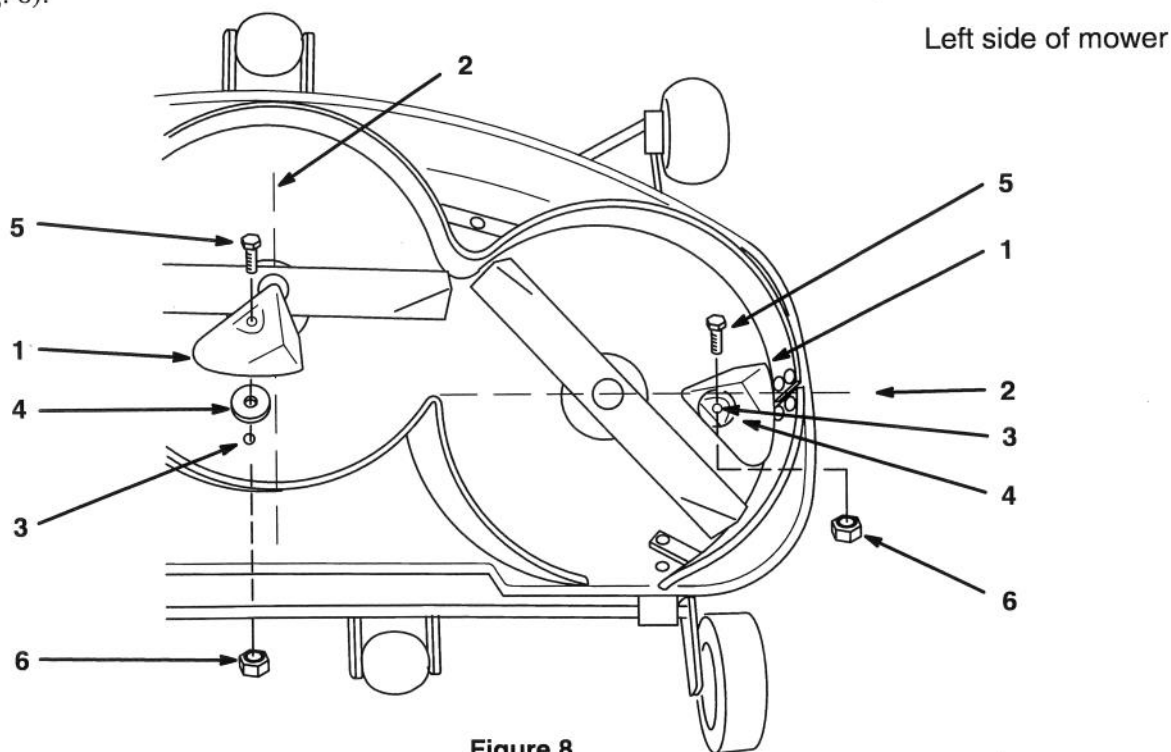


Figure 8

- |                               |                             |
|-------------------------------|-----------------------------|
| 1. Kicker                     | 4. Spacer                   |
| 2. Spindle center line        | 5. Bolt 3/8–16 x 1" (26 mm) |
| 3. Mark and drill 11/32" hole | 6. Locknut 3/8"             |

m-3208

## Install Decals

1. Select appropriate decal, text (domestic) or graphic (international).
2. Remove backing paper and apply decal to left top of mower as shown (Fig. 9). Smooth from center to edges to remove air bubbles.
3. Install Recycler® decal to left side of mower as shown (Fig. 9).

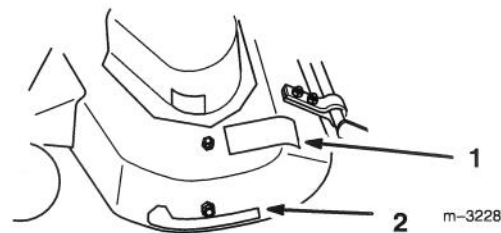


Figure 9

- |                 |                    |
|-----------------|--------------------|
| 1. Danger decal | 2. Recycler® decal |
|-----------------|--------------------|

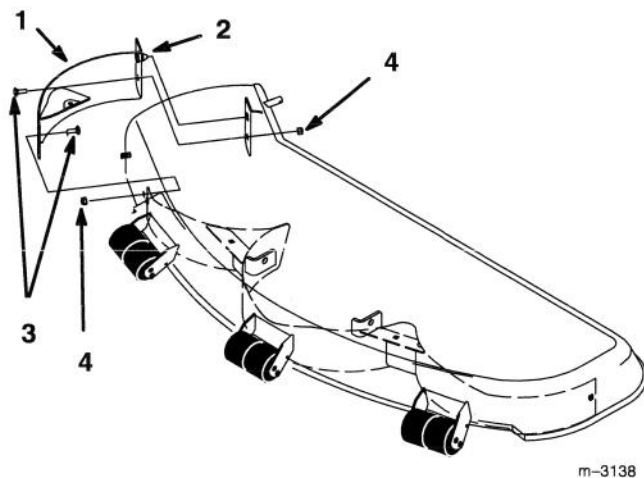
m-3228

4. Install mower onto traction unit; refer to traction unit Operator's Manual.

## Removing the Recycler® Baffle

**Note:** Only the right side baffle need be removed for side discharge mowing.

1. Thoroughly clean the mower.
2. Remove lock nuts and carriage bolts from front and flange on discharge baffle (Fig. 10). Lower baffle and slide out discharge opening to remove.
3. Install previously removed 5/16–5/8” (16 mm) bolts and 5/16” lock nuts in open holes of mower for safety (Fig. 10).



**Figure 10**

- |                      |                             |
|----------------------|-----------------------------|
| 1. Baffle right side | 3. Bolt 5/16 x 5/8” (16 mm) |
| 2. Flange pin        | 4. Lock nut 5/16”           |

### **DANGER**

#### **POTENTIAL HAZARD**

- Open holes in the mower expose you and others to thrown debris.

#### **WHAT CAN HAPPEN**

- Debris thrown out of holes in the mower can cause injury.

#### **HOW TO AVOID THE HAZARD**

- Never operate mower without hardware mounted in all holes in mower.
- Install hardware in mounting holes when recycle baffle is removed.



## Recycling® Tips

**Selecting The Proper Height-Of-Cut Setting To Suit Conditions** – Remove approximately one inch or no more than 1/3 of the grass blade when cutting. In exceptionally lush and dense grass you may have to raise your height-of-cut setting another notch or convert to side discharge or bagging operations.

**Mowing In Extreme Conditions** – Air is required to cut and recut grass clippings in mower housing, so do not set height-of-cut too low or totally surround housing by uncut grass. Always try to have one side of the mower housing free from uncut grass, allowing air to be drawn into housing. When making an initial cut thru center of uncut area, operate machine slower and back up if mower starts to clog.

**Mow At Proper Intervals** – Under most normal conditions you'll need to mow approximately every 4–5 days. But remember, grass grows at different rates at different times. This means that in order to maintain the same height-of-cut, which is a good practice, you'll need to cut more frequently in early spring; as the grass growth rate slows in mid summer, cut only every 8–10 days. If you are unable to mow for an extended period due to weather conditions or other reasons, convert to side discharge or bagging options or mow first with the height-of-cut at a high level; then mow again 2–3 days later with a lower height setting.

**Note:** When using mower in side discharge mode only discharge baffle must be removed. Mounting hardware must be installed in open holes.

**Always Mow With Sharp Blades** – A sharp blade cuts cleanly and without tearing or shredding the grass blade like a dull blade. Tearing and shredding causes the grass to turn brown at the edges which impairs growth and increases susceptibility to disease.

**After Operating** – To assure optimum performance, clean underside of mower housing, especially around kickers after each use. If residue is allowed to build up in mower housing and on inserts, cutting performance will decrease.

## DANGER

### POTENTIAL HAZARD

- Without the grass deflector or entire grass catcher assembly mounted in place, you and others are exposed to blade contact and thrown debris.

### WHAT CAN HAPPEN

- Contact with rotating mower blade(s) and thrown debris will cause injury or death.

### HOW TO AVOID THE HAZARD

- NEVER operate mower without grass deflector or entire grass catcher in place.
- Never put your hands or feet under the mower.
- Never try to clear discharge area or mower blades unless you move the blade control (PTO) to "DISENGAGED" and rotate the ignition key to "OFF." Also remove the key and pull the wire off the spark plug.





