



520-H Classic
Garden Tractor

Model No. 73502 - 6900001 & Up

Parts Catalog

ORDERING REPLACEMENT PARTS

To order replacement parts, please supply: the part number, the quantity, and the description of each part desired.

Contents

Description	Page	Description	Page
Hood and Grille	1	Eaton Hydrostatic Transmission #110-062	24
Frame, Front Axle	2	Eaton Hydrostatic Transmission #110-062	25
Steering	3	Starter	23
Hoodstand, Console	4	Engine Housing	24
Footrests	5	Flywheel	25
Gages, Throttle	6	Cam & Crankshafts	26
Hydraulic Lift System	7	Oil Fill Tube & Base	27
Hydraulic Lift System	8	Oil Filter	28
Hydro Controls, Brake	9	Gear Case & Ignition Controls	29
Hydro Drive	10	Ignition Electronics	30
Fender, Seat	11	Air Cleaner	31
PTO Clutch Pulley	12	Governor	32
PTO Clutch Linkage	13	Intake Manifold & Carburetor	33
Engine	14	Choke Control	34
Transmission	15	Fuel Filter & Pump	35
Wheels And Tires	16	Engine Cylinder Block	36
Hitches	17	Engine Cylinder Block	37
Battery	18	Wire Harness & Cable Routing	38
Fuel Tank	19	Electric Schematic	39
Front Plate, Relays	20	520-Wire Harness Attachment & Component's ..	40
Hydrostatic Transmission	21	520-Wire Harness Attachment & Component's ..	41
Hydrostatic Transmission (Continued)	22	Engine Wire Harness	42
This Page Intentionally Left Blank	23	Note:	

Part Description Abbreviations

Part descriptions in this catalog may include the following abbreviations.

Abbreviation	Meaning	Abbreviation	Meaning
AR	as required	HSBH	hex socket button head
ASM	assembly	HSFH	hex socket flat head
CARR	carriage	HSH	hex socket head
DEG	degrees	HWH	hex washer head
FH	flat head	HWHTF	hex washer head thread forming
GA	gauge	INCL	includes
HF	hex flange	LH	left hand
HFW	hex flange washer	PH	pan head
HH	hex head	PPH	Phillips pan head
HHF	hex head flange	PTO	power take off
HHST	hex head self tapping	RH	right hand
HJ	hex jam	SFH	slotted fillister head
HOC	height-of-cut	SH	square head
HS	hex socket	SHWH	slotted hex washer head

SPH slotted pan head
 STD standard
 TAP self tapping

TH truss head
 TTH Torx truss head
 WH wing head

Important Format Explanations

This catalog uses special formats to convey information in illustrations and parts lists. Specifically, one format is used in conjunction with service assemblies and another with quantities associated with reference numbers.

Service Assemblies

Parts within service assemblies have reference numbers in the form X:Y. X is the reference number of the service assembly and Y is a sequential number unique to each part within the service assembly.

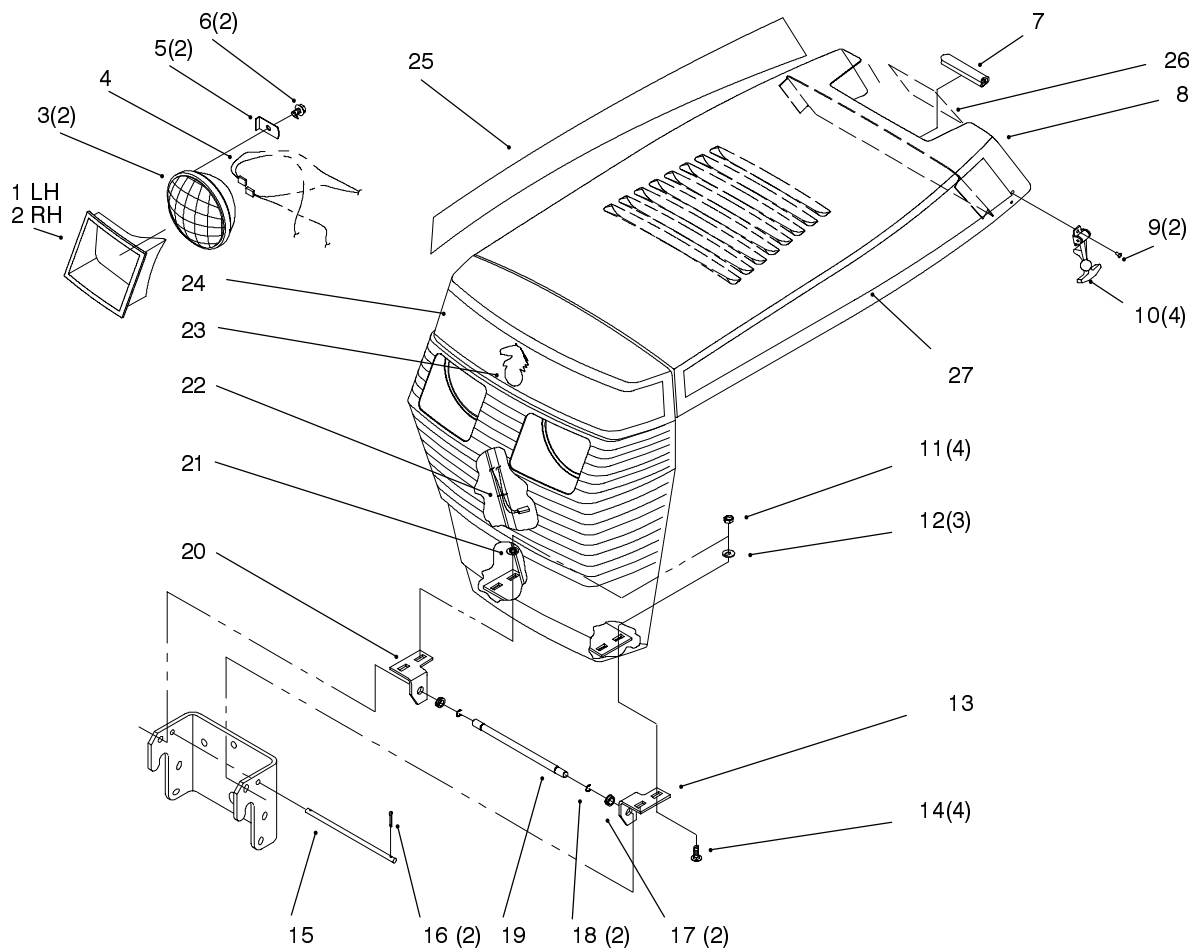
For example, a wheel assembly might be identified by reference number 6, the tire by 6:1, the valve by 6:2, and the wheel by 6:3. When you order the assembly identified by reference number 6, you receive all parts identified by reference numbers 6:1, 6:2, and 6:3. However, you may also order any part individually.

Reference numbers of this type appear in part lists and as callouts in illustrations.

Reference Numbers with Quantities

Illustrations may have a quantity in parentheses next to a reference number, in the form $X (Y)$. X is the reference number. Y in parentheses is the quantity of the part identified by the reference number.

For example, the illustration callout 4 (2) indicates that two parts are used in that instance.



Sheet No.: 2

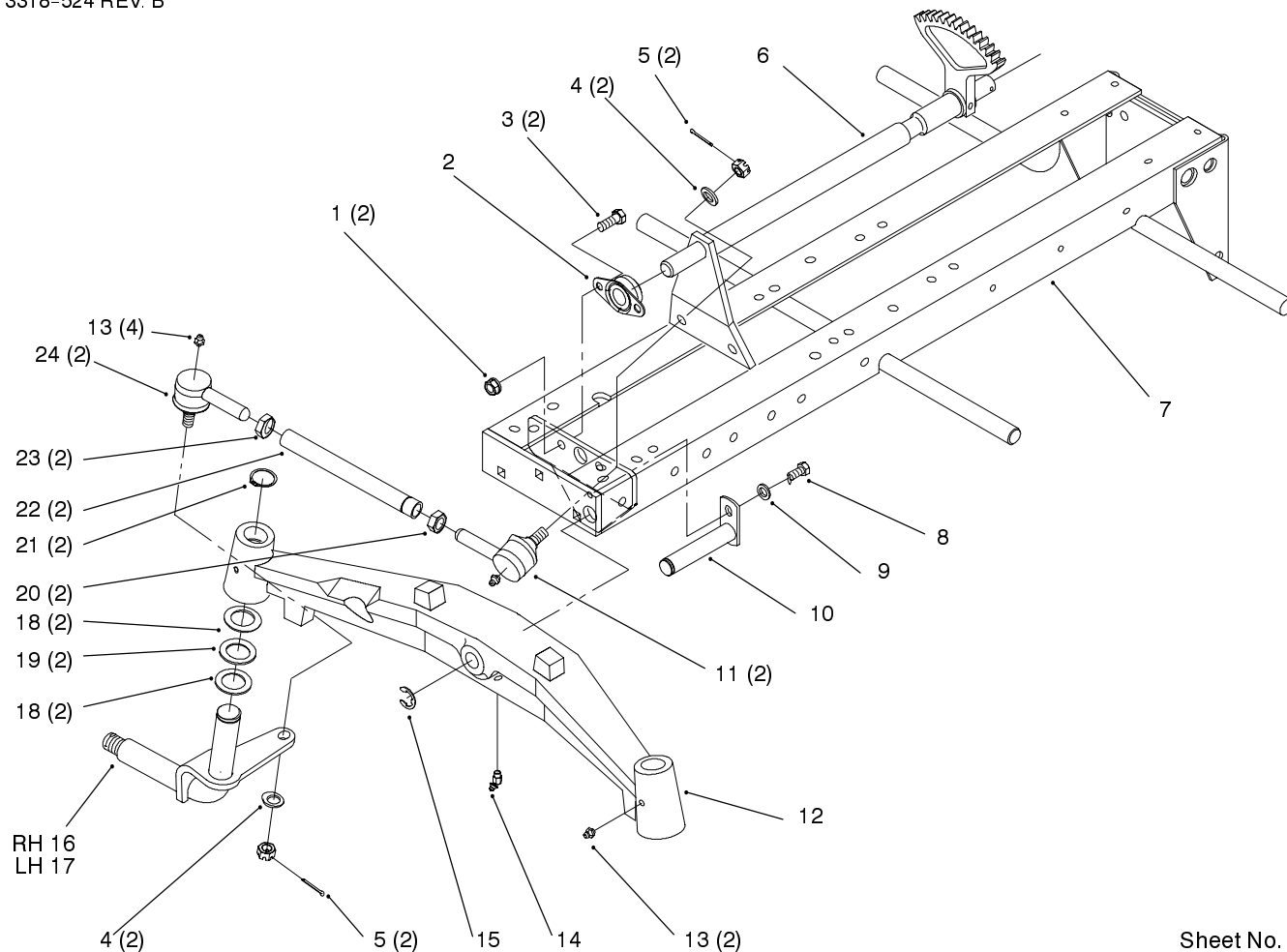
Hood and Grille

Ref. No.	Part No.	Qty.	Description
1	109495	1	Bezel-LH Headlight
2	109494	1	Bezel-RH Headlight
3	102881	2	Headlamp
4	114052	1	Wire Harness
5	109459	2	Clamp-Headlight
6	9266714	2	Screw-HWHTF
8	113968	1	ASM-Hood & Grill
9	117432	4	Poprivet
10	117344	2	Handle-Latch
11	3296-42	4	Nut-Lock
12	3256-22	3	Washer-Flat
13	116747	1	Bracket-Grill LH
14	3229-25	4	Screw-CARR
15	101850	1	Rod-Hood Stop
16	3272-1	2	Pin-Cotter
17	5979	2	Bushing-Nyliner
18	105797	2	Ring-Ext Ret
19	116745	1	Rod-Grill Pivot
20	116746	1	Bracket-Grill RH
22	3290-378	1	Tie-Cable
23	94-3709	1	Horse Head Logo
24	92-9826	1	Decal-Front Hood
25	94-6336	1	Decal-Hood RH Top
27	94-6335	1	Decal-Hood LH Top

Ref. No.	Part No.	Qty.	Description

Part Identified in illustration but not in part list are not used on this model

3318-524 REV. B

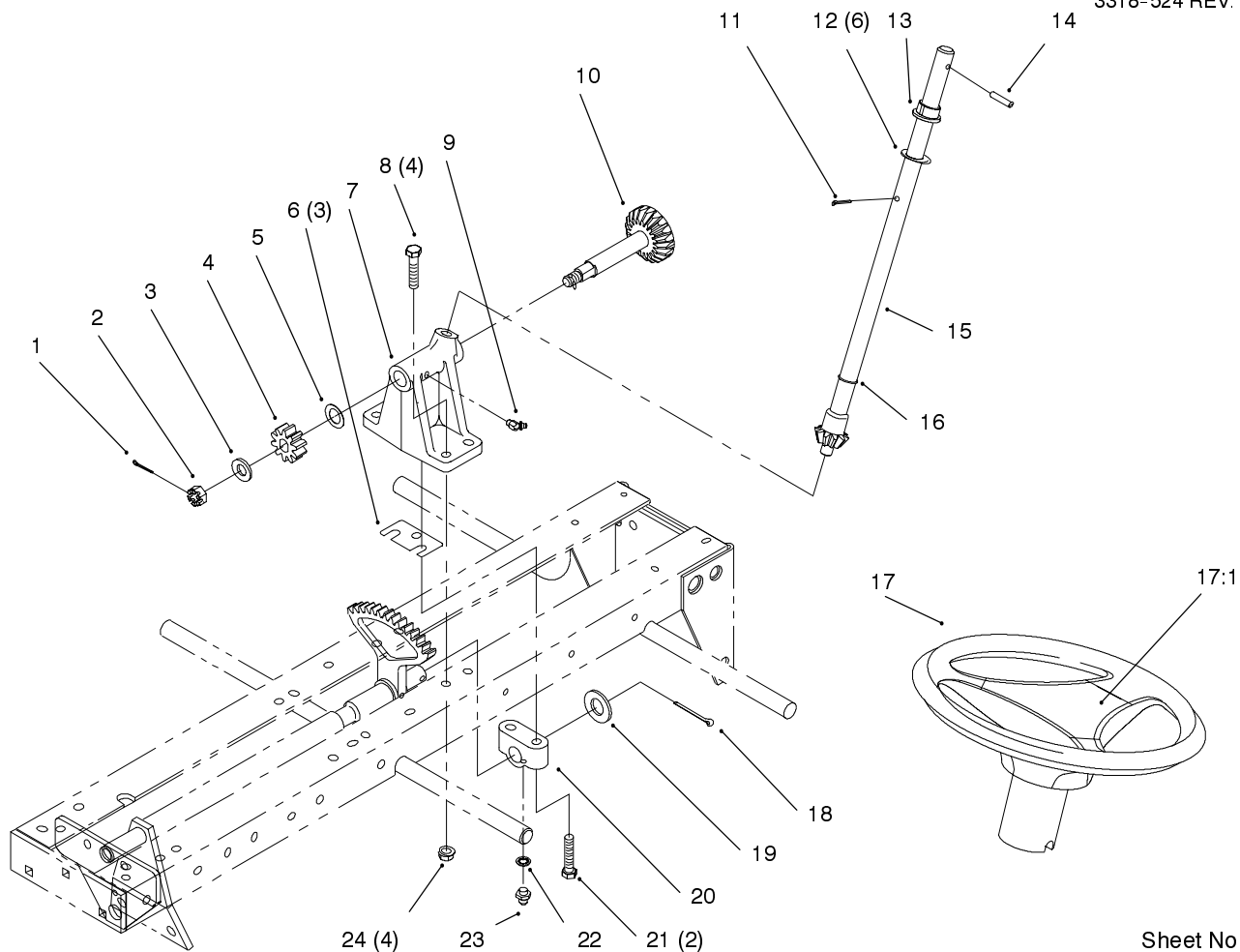


Sheet No. : 4

Frame, Front Axle

Ref. No.	Part No.	Qty.	Description
1	3296-39	2	Nut-Lock
2	6472	1	Bearing-Flanged
3	323-6	2	Screw-HH
4	9202424	4	Washer-Flat
5	3272-7	4	Pin-Cotter
6	78-1490	1	Shaft
7	94-3716-01	1	Frame
8	322-1	1	Screw
9	3253-4	1	Washer-Lock
10	6216	1	Pin
11	112772	2	Balljoint-RH Thread
12	116823	1	Axle-Front
13	302-5	6	Fitting-Grease
14	1481	1	Fitting-Grease
15	5618	1	Ring-Retaining
16	112764	1	Spindle
17	112765	1	Spindle
18	9548	4	Washer-Thrust
19	9865	2	Bearing-Thrust
20	3220-11	2	Nut-Hex Jam
21	32151-29	2	Ring-Ext Snap
22	112773	2	Tube
23	112775	2	Nut-Hex Jam
24	112771	2	Balljoint-LH Thread

Ref. No.	Part No.	Qty.	Description



Sheet No.: 5

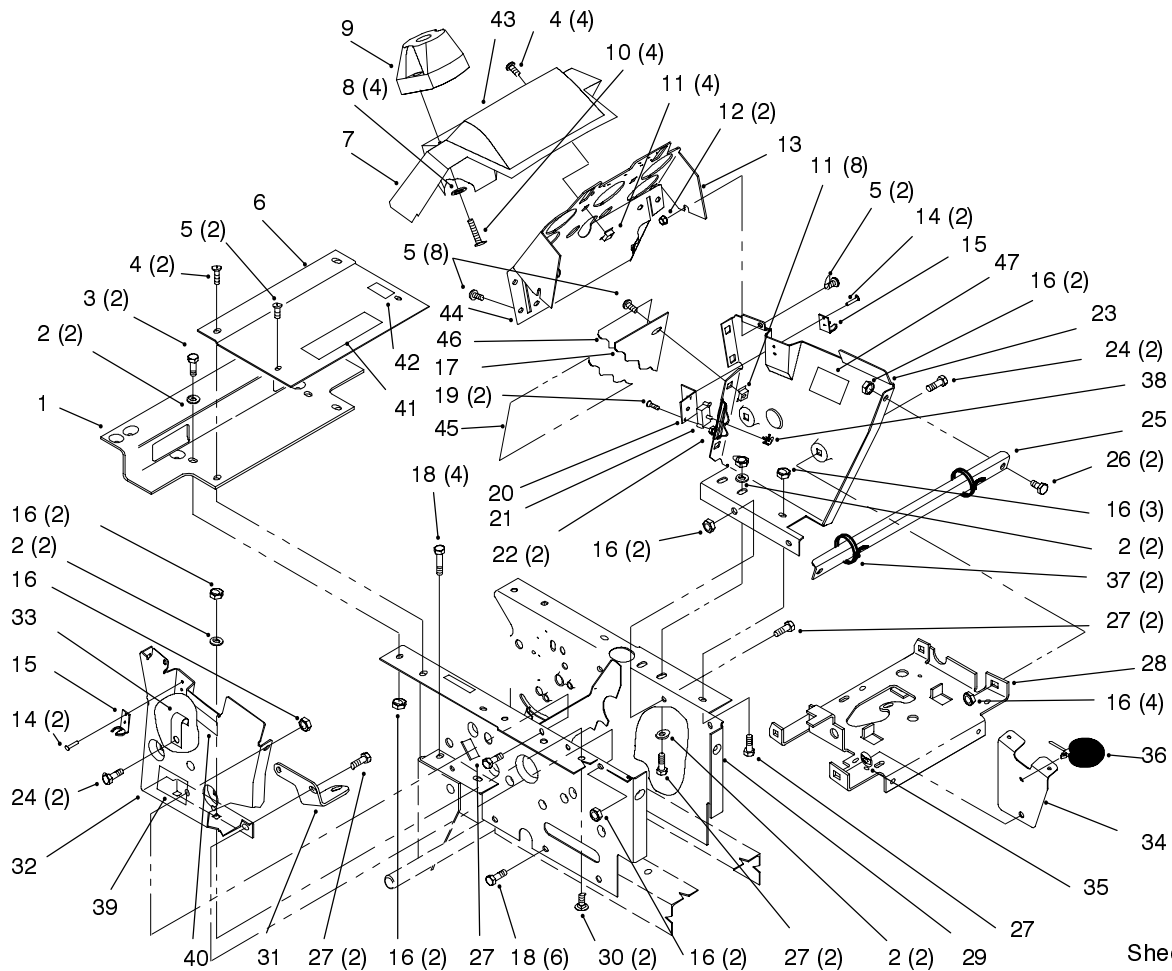
Steering

Ref. No.	Part No.	Qty.	Description
1	3272-11	1	Pin-Cotter
2	32136-3	1	Nut-Shh
3	3256-26	1	Washer-Flat
4	78-1481	1	Pinion-Spur
5	9202624	1	Washer-Flat
6	78-1531	3	Shim
7	78-1411	1	Support-Steering
8	323-8	A/R	Screw-HH
8	323-9	4	Screw-HH
9	1481	1	Fitting-Grease
10	78-1450	1	Countershaft
11	3272-21	1	Pin-Cotter
12	5210	6	Washer-Shim
13	109189	1	Bearing-Flange
14	32121-111	1	Pin-Spiral
15	92-0995	1	Shaft
16	237-69	1	O-Ring
17	94-3519	1	Steering Wheel 15"
17:1	88-3870	1	Cover-Steering Wheel
18	3272-22	1	Pin-Cotter
19	9202164	1	Washer
20	88-3240	1	Block-Bearing
21	9080376	2	Screw-HH
22	3254-8	1	Washer-Lock
23	302-16	1	Fitting-Grease
24	3296-39	4	Nut-Lock

Ref. No.	Part No.	Qty.	Description

Part Identified in illustration but not in part list are not used on this model

3318-524 REV. B

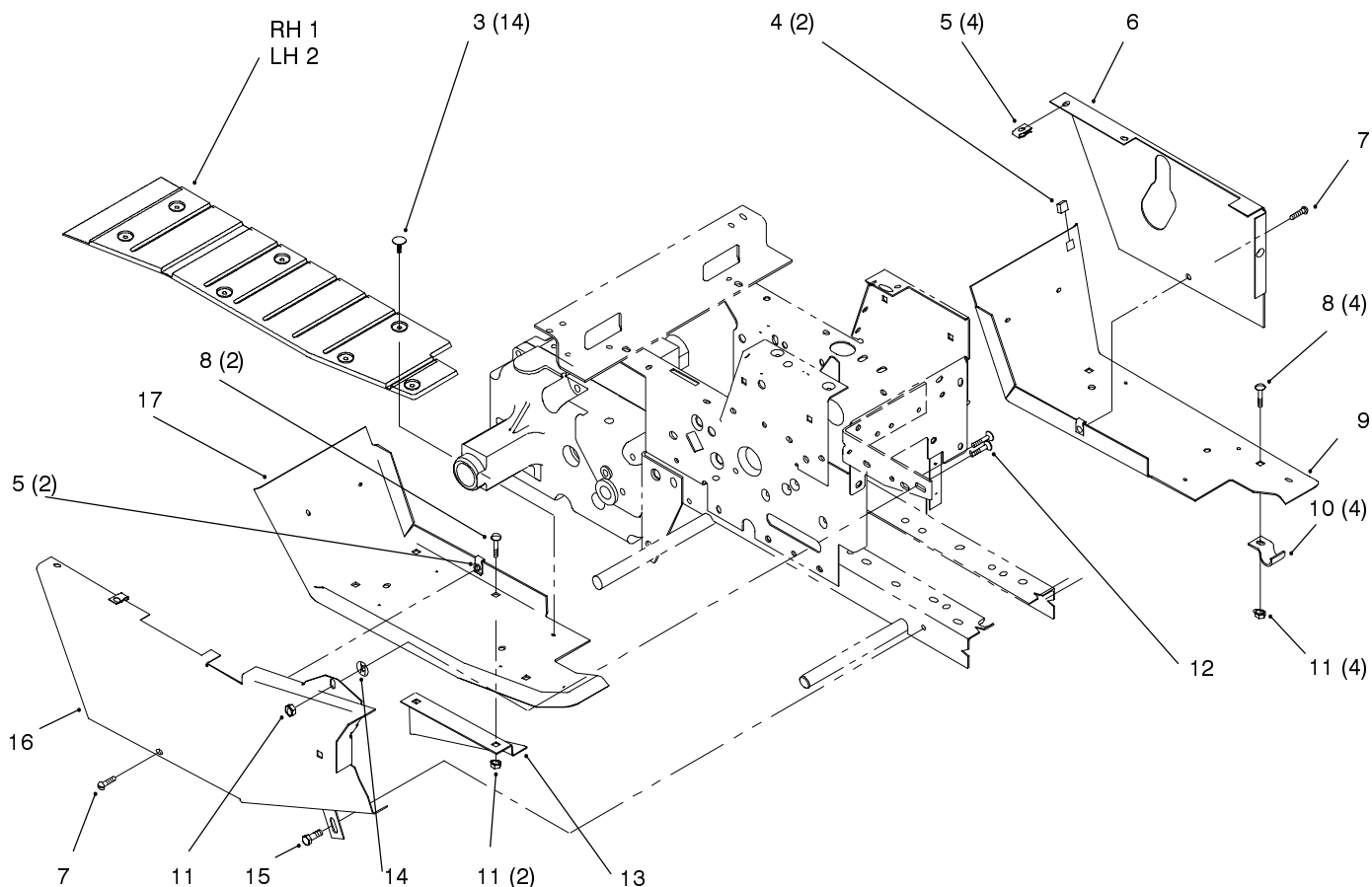


Sheet No.: 8

Hoodstand, Console

Ref. No.	Part No.	Qty.	Description
1	113023	1	Bracket-Fender
2	3256-23	8	Washer-Flat
3	322-5	2	Screw-HH
4	9108392	6	Screw-Phcr
5	9108372	12	Screw-Phcr
6	79-6770	1	Plate-Top Hoodstand
7	115620	1	Cover-Console 5-Gage
8	9202704	4	Washer-Flat
9	118410	1	Cover-Steering Shaft
10	118780	4	Screw
11	32115-5	12	Nut-Retainer
12	32128-33	2	Nut-Hex Flange
13	117267	1	ASM-Panel
14	117433	4	Poprivet
15	117343	2	Latch-Hood
16	3296-29	18	Nut-Lock
17	113928	1	Plate-Hoodstand
18	9266944	10	Screw-HH
19	9109482	2	Screw-Phcr
20	114628	1	Bracket-Switch
21	94-1839	1	Sensor-Air Clnr Vacuum
22	9157324	2	Nut-Lock
23	79-4890	1	Panel-Side LH
24	116000	4	Screw-CARR

Ref. No.	Part No.	Qty.	Description
25	113932	1	Stiffener-Panel
26	322-1	2	Screw-HH
27	322-3	8	Screw-HH
28	116309	1	ASM-Support
29	79-5120	1	ASM-Hoodstand
30	9000369	2	Bolt-CARR
31	78-1540	1	Bracket-Control
32	113962	1	Panel-Side
33	8830	1	Retainer-"J"
34	117191	1	Bracket-Holder
35	108457	1	Nut-Push On
36	117257	1	Tie- Snap In
37	3290-378	2	Tie-Cable
38	114767	1	Clamp-Hose
39	94-6342	2	Decal-Model 520-H
41	92-8946	1	Decal-Danger
42	116445	1	Decal-Parking Brake
43	78-8350	1	Decal-Indicator Lights
44	119230	1	Decal-Lower Dash
45	111960	1	Decal-PTO Clutch
46	92-9838	1	Decal-Danger
47	111926	1	Decal-Elec System



Sheet No. : 9

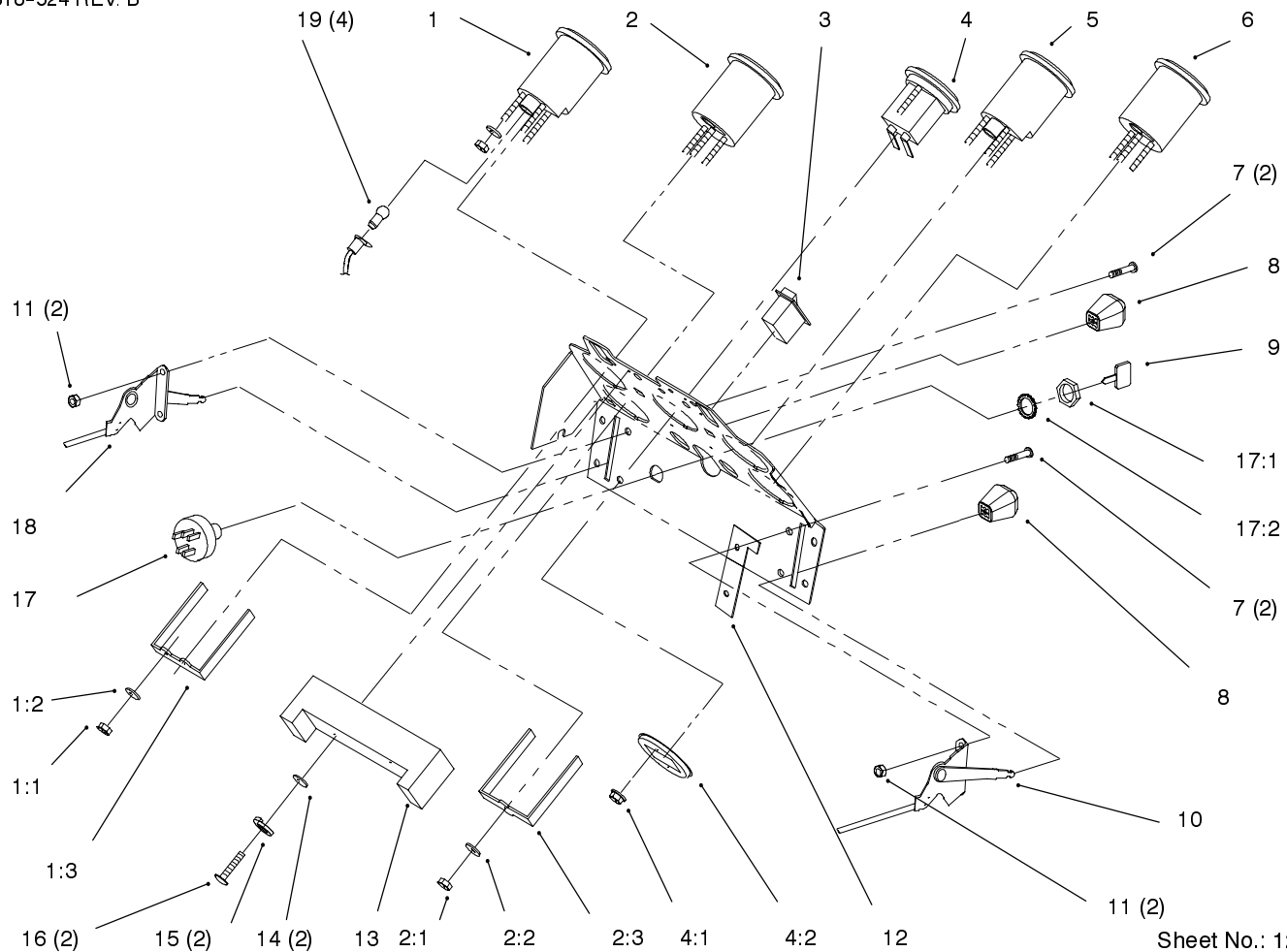
Footrests

Ref. No.	Part No.	Qty.	Description
1	94-3711	1	Mat-Foot RH
2	94-3712	1	Mat-Foot LH
3	3290-479	17	Fastener-Panel
4	518211	A/R	Bumper-Rubber
5	107069	6	Nut-Speed
6	79-5130	1	Cover-Side LH
7	9108372	2	Screw-Phcr
8	116000	4	Screw-CARR
9	94-3522	1	Footrest LH
10	7456	4	Clamp
11	3296-29	5	Nut-Lock
12	3230-1	1	Screw-CARR
14	108457	1	Nut-Push On
15	9266944	1	Screw-HH
16	94-3725-01	1	Belt Guard
17	94-3520	1	Footrest RH

Ref. No.	Part No.	Qty.	Description

Part Identified in illustration but not in part list are not used on this model

3318-524 REV. B



Sheet No.: 12

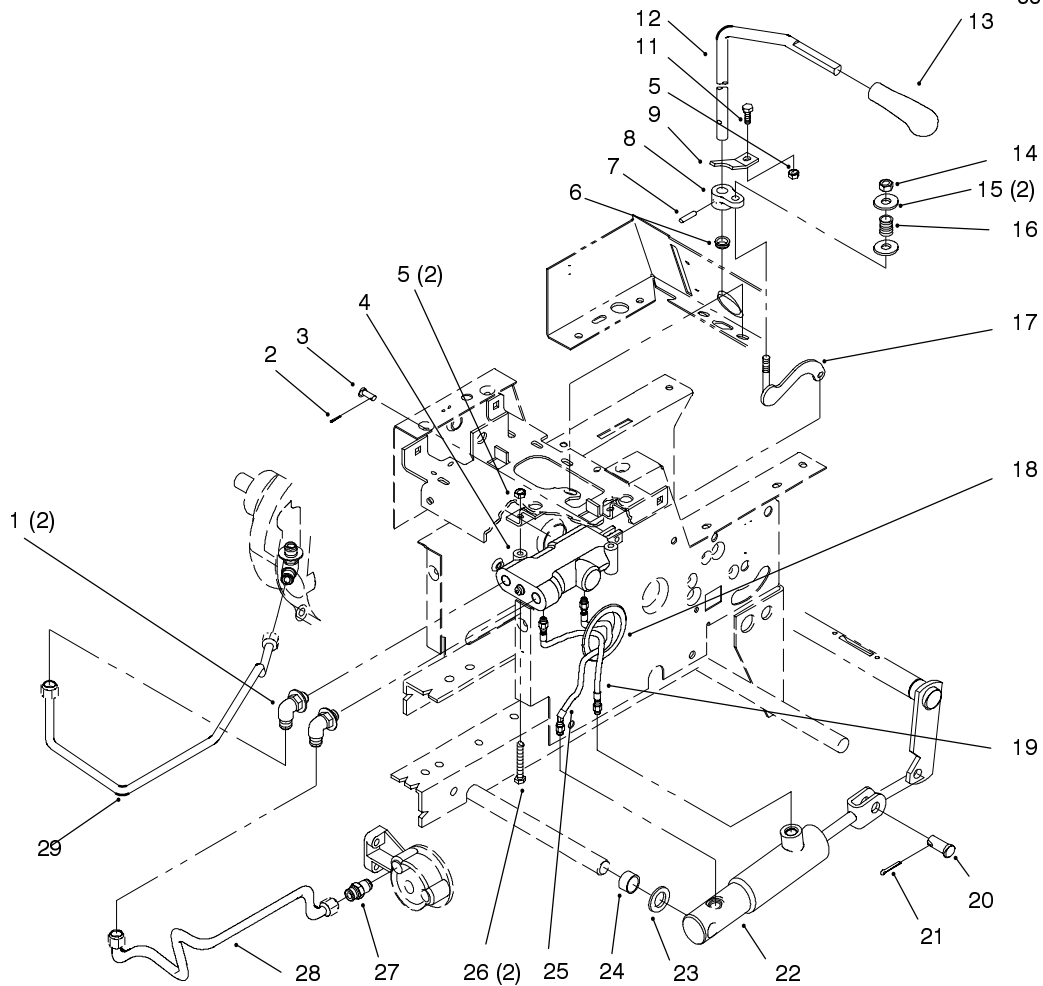
Gages, Throttle

Ref. No.	Part No.	Qty.	Description
1	78-0060	1	Tachometer
1:1	3217-27	2	Nut
1:2	3255-25	2	Washer-Lock
1:3	78-0080	1	Bracket
2	78-0040	1	Gauge-Fuel
2:1	3217-27	2	Nut
2:2	3255-25	2	Washer-Lock
2:3	78-0080	1	Bracket
3	92-9844	1	Switch-Light
4	94-3723	1	Hourmeter
4:1	32149-9	2	Nut-Lock
4:2	94-1849	1	Retainer
5	79-2660	1	Gauge-Vacuum
6	78-0030	1	Voltmeter
4:1	3217-27	1	Nut
4:2	3255-25	1	Washer-Lock
4:3	78-0080	1	Bracket
7	9107922	4	Screw-Phcr
8	66-0120	2	Knob
9	62-7770	2	Key-Ignition
10	114027	1	Control-Choke
11	9157404	4	Nut
12	114641	1	Stop-Choke
13	79-2130	1	Circuit Board-8 Light
14	3256-21	2	Washer-Flat
15	3253-15	2	Washer-Lock

Ref. No.	Part No.	Qty.	Description
16	9107834	2	Screw-Phcr
17	111216	1	ASM-Switch
17:1	101884	1	Nut
17:2	9201604	1	Washer-Lock
18	115392	1	Control-Throttle
19	79-0450	4	Lamp-Mini

Part Identified in illustration but not in part list are not used on this model

3318-524 REV. B

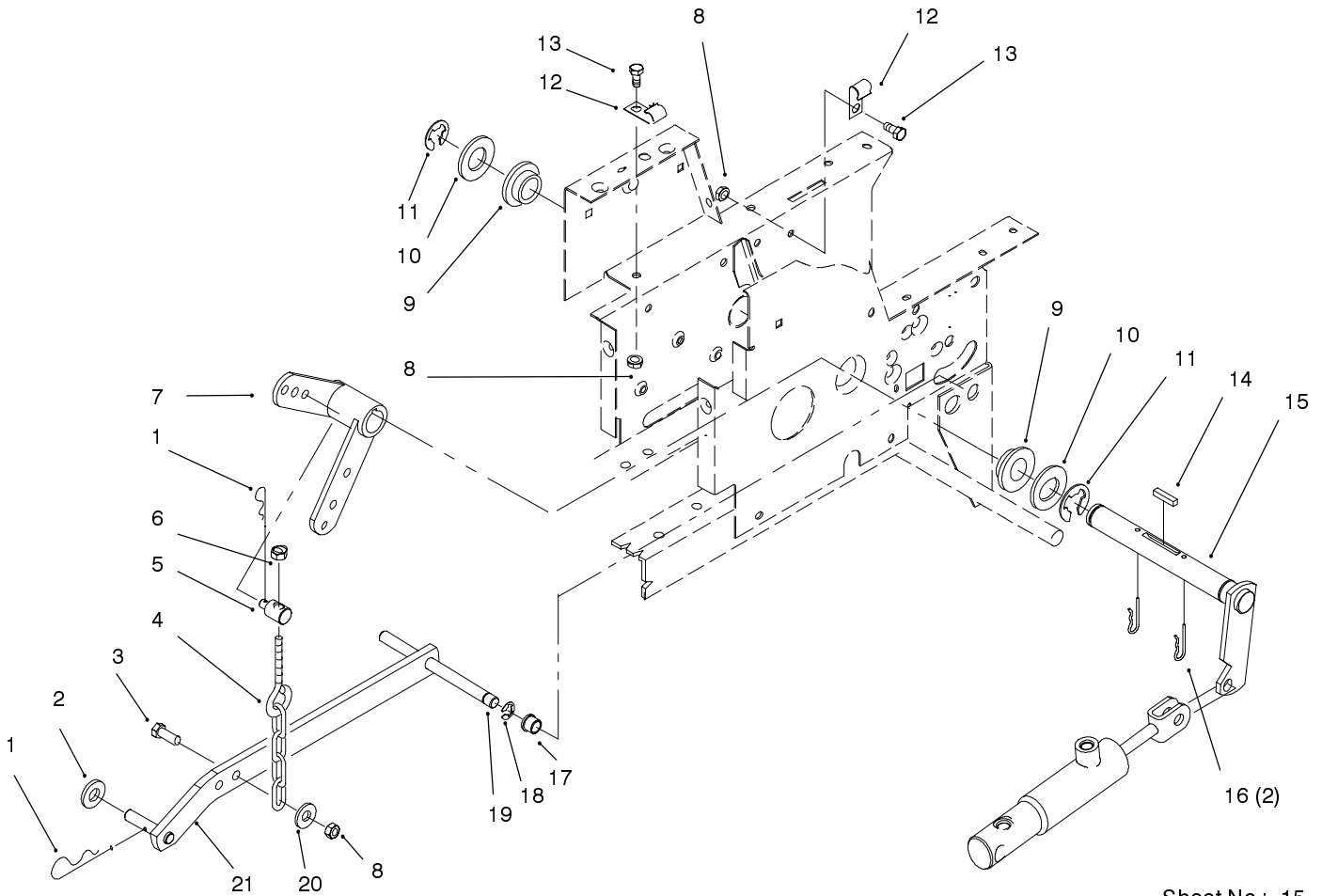


Sheet No. : 14

Hydraulic Lift System

Ref. No.	Part No.	Qty.	Description
1	108365	2	Fitting-Hyd Tube
2	3272-1	1	Pin-Cotter
3	9321204	1	Pin-Clevis
4	114000	1	Valve ASM - Hyd
5	3296-42	3	Nut-Lock
6	5983	1	Bushing
7	933198	1	Pin-Spirol
8	116302	1	Arm-Control
9	116305	1	Bracket-Control
11	321-4	1	Screw-HH
12	117328	1	Rod-Lift Control
13	94-3700	1	Knob-Lift
14	3296-29	2	Nut-Lock
15	3256-23	3	Washer-Flat
16	104841	1	Spring
17	78-5640	1	ASM-Valve Actuator Bar
18	106267	1	Grommet
19	110125	1	Hose ASM-Hydraulic
20	9329974	1	Pin-Clevis
21	3272-11	1	Pin-Cotter
22	119340	1	Cylinder ASM
23	9202324	1	Washer
24	101757	1	Spacer
25	110124	1	Hose ASM-Hydraulic

Ref. No.	Part No.	Qty.	Description
26	321-11	2	Screw-HH
27	102628	1	Fitting-Hyd Tube
28	94-1802	1	Tube ASM-Hyd Return
29	86-9280	1	Tube ASM-Hyd Pressure



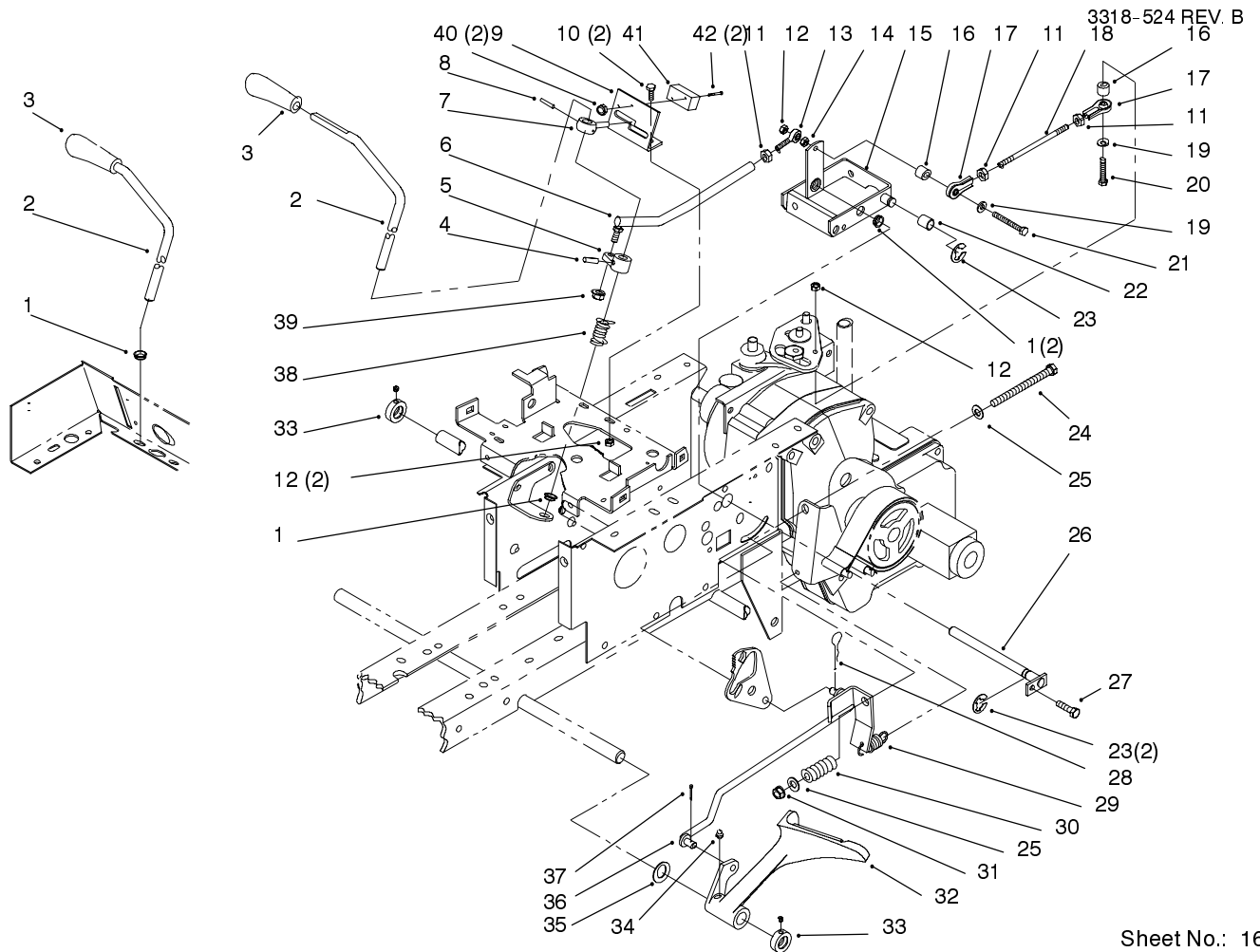
Sheet No.: 15

Hydraulic Lift System

Ref. No.	Part No.	Qty.	Description
1	9335054	2	Hairpin
2	3256-26	1	Washer-Flat
3	322-5	1	Screw-HH
4	106522	1	Chain-Lift
5	79-5720	1	Trunnion
6	3296-39	1	Nut-Lock
7	79-5700	1	ASM-Lift Arm
8	3296-29	2	Nut-Lock
9	106269	2	Bearing-Flange
10	3256-62	2	Washer-Flat
11	32151-91	2	Ring-Retaining
12	8830	1	Retainer-"j"
13	322-2	1	Screw-HH
14	1121	1	Key
15	121100	1	ASM-Lift Arm
16	9335074	2	Cotter-Hairpin
17	6229	1	Bearing
18	32120-47	1	Ring-Retaining
19	102374	1	Pin-Pivot
20	3256-23	1	Washer-Flat
21	120400	1	ASM-Lift Bar

Ref. No.	Part No.	Qty.	Description

Part Identified in illustration but not in part list are not used on this model

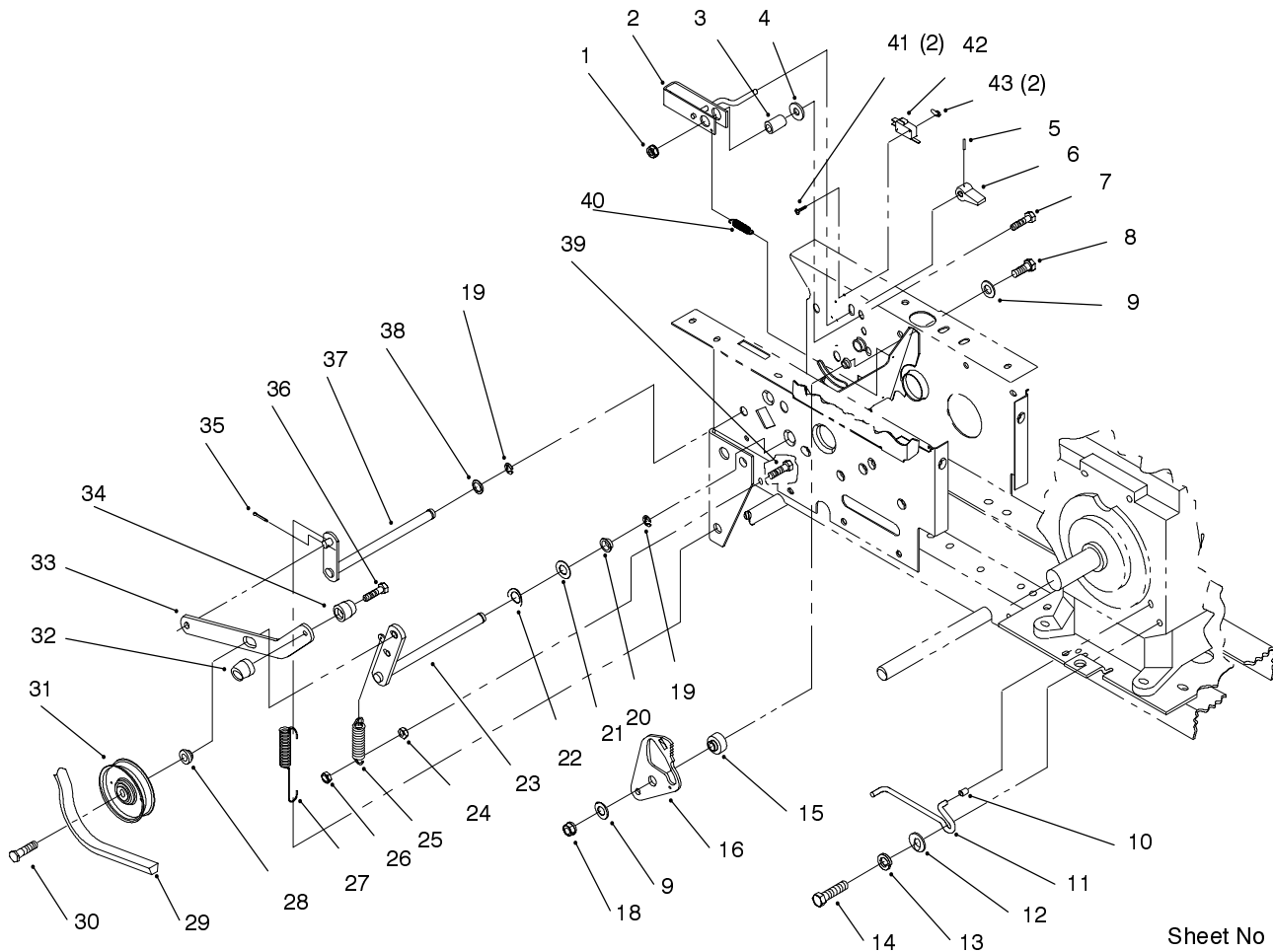


Sheet No.: 16

Hydro Controls, Brake

Ref. No.	Part No.	Qty.	Description
1	5983	A/R	Bushing
1	5983	3	Bushing
2	117329	1	Rod-Motion Control
3	94-3728	1	Knob
4	933198	1	Pin-Spirol
5	116321	1	Arm-Control
6	116324	1	Rod & Balljoint ASM
7	118660	1	Guide-Control
8	32121-94	1	Pin-Spirol
9	78-5711	1	Bracket-Control
10	321-4	2	Screw-HH
11	3220-1	3	Nut-Hex
12	3296-42	4	Nut-Lock
13	116407	1	Rod End
14	3217-5	1	Nut-Hex
15	113454	1	ASM-Cam Control
16	100304	2	Bearing-Cam Roller
17	110189	2	Rod End ASM
18	108904	1	Rod-Thd
19	3256-22	2	Washer-Flat
20	321-9	1	Screw-HH
21	9114584	1	Screw-HH
22	100656	1	Bearing-Cam Return
23	32120-47	3	Ring-Retaining
24	323-23	1	Screw-HH
25	3256-24	2	Washer-Flat

Ref. No.	Part No.	Qty.	Description
26	108496	1	ASM-Rod Cam Pivot
27	9266944	1	Screw-HH
28	9335044	1	Hairpin
29	103125	1	Spring-Extension
30	108680	1	Spring-Compression
31	3296-39	1	Nut-Lock
32	94-3707	1	Pedal-Brake
33	111383	2	Collar W/Set Screw
33:1	3245-32	2	Screw-Set
34	302-5	1	Fitting-Grease
35	1278	1	Washer-Shim
36	109372	A/R	ASM-Brake Rod
36	94-6654	1	Rod
37	3272-10	1	Pin-Cotter
38	101853	1	Spring-Compression
39	3296-4	1	Nut-Lock
40	9157324	2	Nut-Lock
41	115230	1	Switch-Clutch
42	9109484	2	Screw-Phcr



Sheet No. : 17

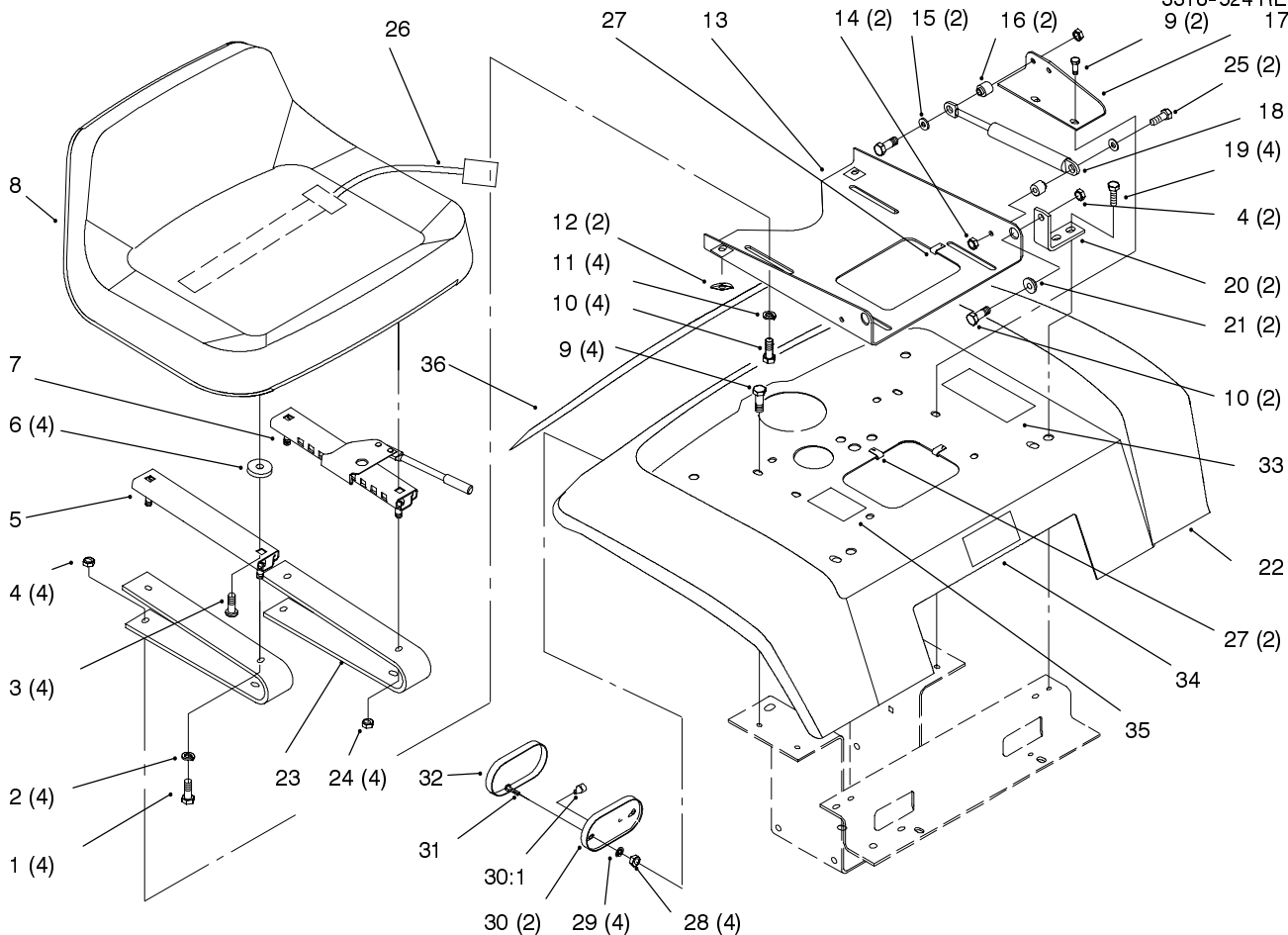
Hydro Drive

Ref. No.	Part No.	Qty.	Description
1	102809	1	Nut-Hex Lock
2	78-8500	1	ASM-Parking Brake Pawl
3	102025	1	Spacer
4	9202414	1	Washer-Flat
5	933135	1	Pin- Spirol
6	118860	1	Knob-Parking Brake
7	323-9	1	Screw-HH
8	323-8	1	Screw-HH
9	3256-4	2	Washer-Flat
15	108717	1	Spacer-Cam Plate
16	108716	1	Plate-Neutral Cam
18	3296-39	1	Nut-Lock
19	32120-47	1	Ring-Retaining
20	7879	1	Bushing
21	3765	1	Washer-Shim
22	114823	1	Washer-Lock
23	78-6020	1	ASM-Idler Arm
24	3217-5	1	Nut-Hex
25	107938	1	Spring-Extension
26	32146-17	1	Nut-Hex Lock
29	114895	1	Belt-Hydro Drive
30	323-8	1	Screw-HH
31	112791	1	Pulley-Idler
39	321-6	1	Screw-HH
40	83-2820	1	Spring-Extension

Ref. No.	Part No.	Qty.	Description
41	9109482	2	Screw-Phcr
42	111332	1	Switch-Interlock
43	9157324	2	Nut-Lock

Part Identified in illustration but not in part list are not used on this model

3318-524 REV. B



Sheet No.: 21

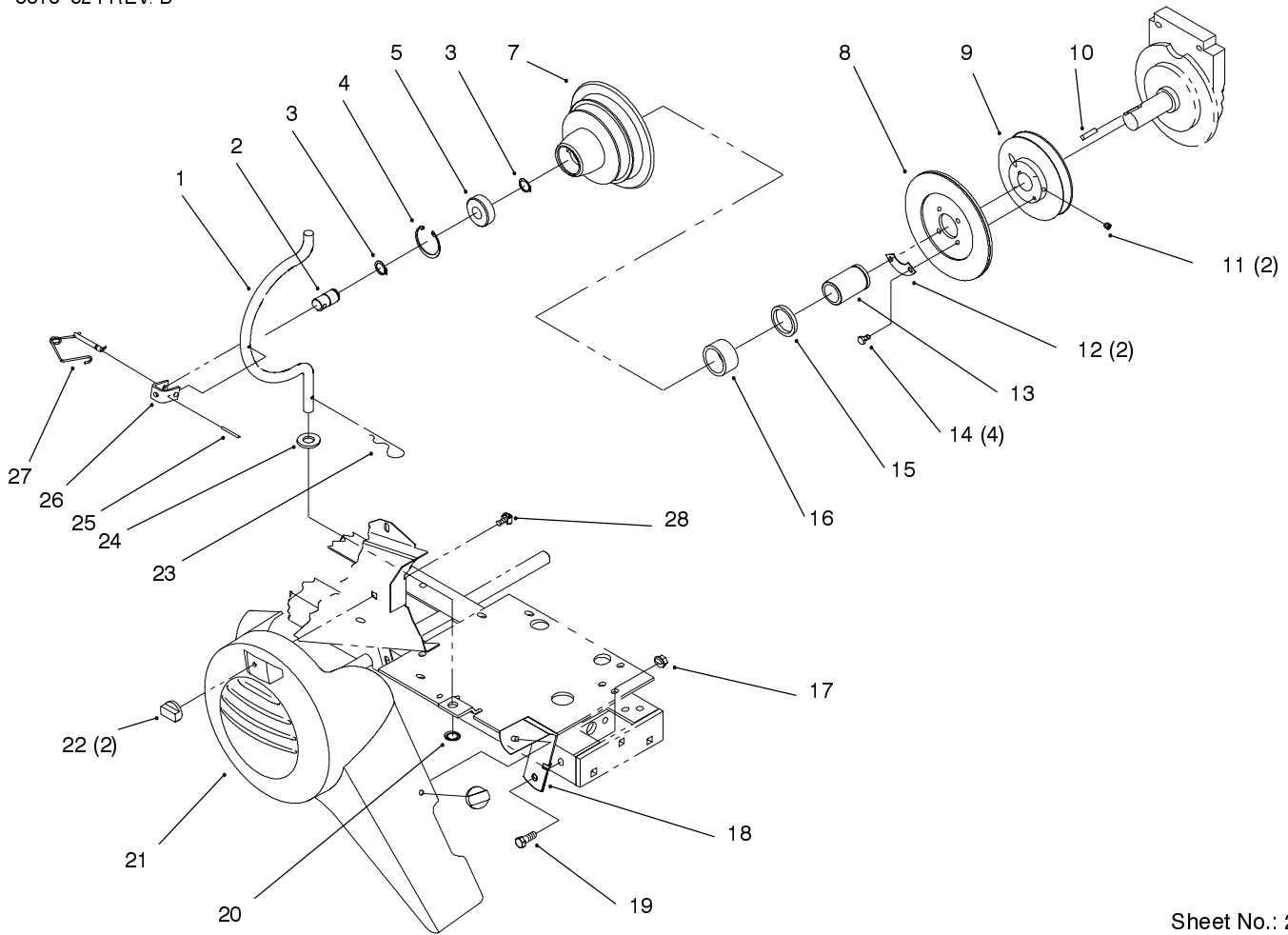
Fender, Seat

Ref. No.	Part No.	Qty.	Description
3	910865	4	Screw
4	3296-29	6	Nut-Lock
5	114265	1	Slide-Seat
6	109989	4	Spacer
7	114264	1	Adjuster-Seat
8	94-3518	1	Seat V-811
9	9266944	4	Screw-HH
10	322-4	6	Screw-HH
11	3256-23	4	Washer-Flat
12	111071	2	Bumper-Rubber
13	78-2990	1	Plate-Seat Pivot
14	3296-42	2	Nut-Lock
15	3256-22	2	Washer-Flat
16	114344	2	Spacer
17	114345	1	Bracket-Gas Spring
18	114343	1	Spring-Gas
19	9266974	4	Screw-HH
20	105524	2	Bracket-Pivot
21	105503	2	Bushing
22	94-3722-01	1	Fender
23	114263	2	Spring-Seat
24	3296-29	4	Nut-Lock
25	321-8	2	Screw-HH
26	38-1420	1	Switch-Seat
27	3023	3	Clip
28	3296-27	4	Nut-Lock

Ref. No.	Part No.	Qty.	Description
29	3254-1	4	Washer-Lock
30	105202	2	Base-Light
30:1	109045	2	Lamp-Wedge
31	3250-31	4	Screw-Phcr
32	112564	2	Lens-Light
34	94-6331	1	Decal-Wheelhorse USA
36	94-6334	1	Decal-Rear Fender

Part Identified in illustration but not in part list are not used on this model

3318-524 REV. B



Sheet No.: 22

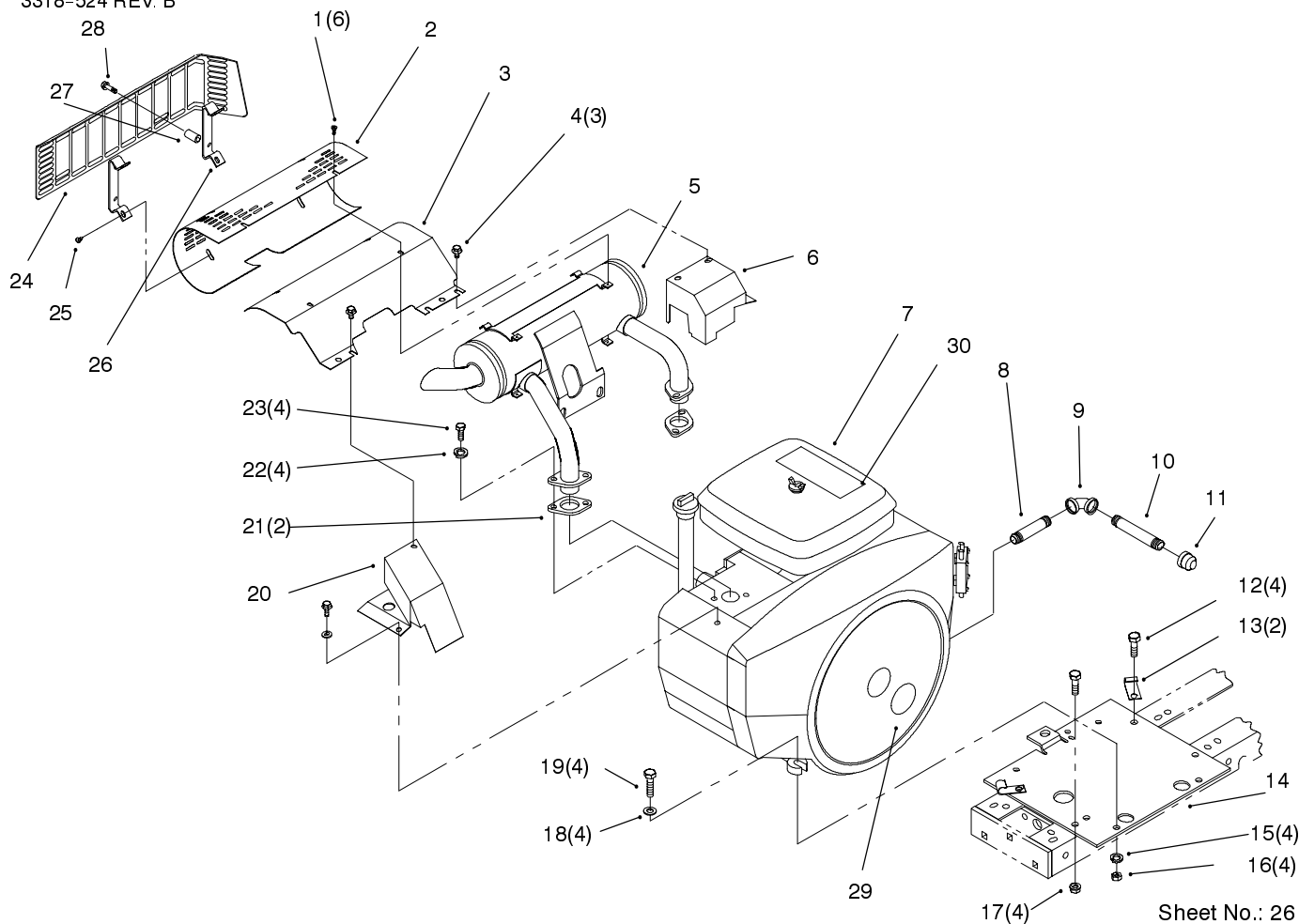
PTO Clutch Pulley

Ref. No.	Part No.	Qty.	Description
1	113108	1	Rod-PTO Housing
2	102872	1	Shaft-PTO
3	32120-72	2	Ring-Retaining
4	32120-62	1	Ring-Retain
5	109842	1	Bearing-Ball
7	103478	1	Housing-Clutch
8	114881	A/R	ASM-PTO Clutch Plate
8	94-6650	1	ASM-Plate
9	7443	1	Pulley-Engine
10	105453	1	Key-Sq
11	3246-2	2	Screw-HSH Set
12	6659	2	Retainer
13	6658	1	Race-Bearing
14	9080026	4	Screw-Lock
15	6663	1	Seal-Oil
16	6662	1	Bearing-Needle
17	32128-40	1	Nut-Lock
18	94-3726	1	Bracket
19	323-6	1	Screw-HH
20	106695	1	Ring-Push On
21	94-3704	1	Belt Cover-PTO
22	94-3735	2	Nut-Wing
23	9335064	1	Hairpin
24	3256-27	1	Washer-Flat
25	933274	1	Pin-Spirol

Ref. No.	Part No.	Qty.	Description
26	113107	1	Clevis
27	111314	1	ASM-Pin
28	94-3729	1	Retainer-Bolt

Part Identified in illustration but not in part list are not used on this model

3318-524 REV. B

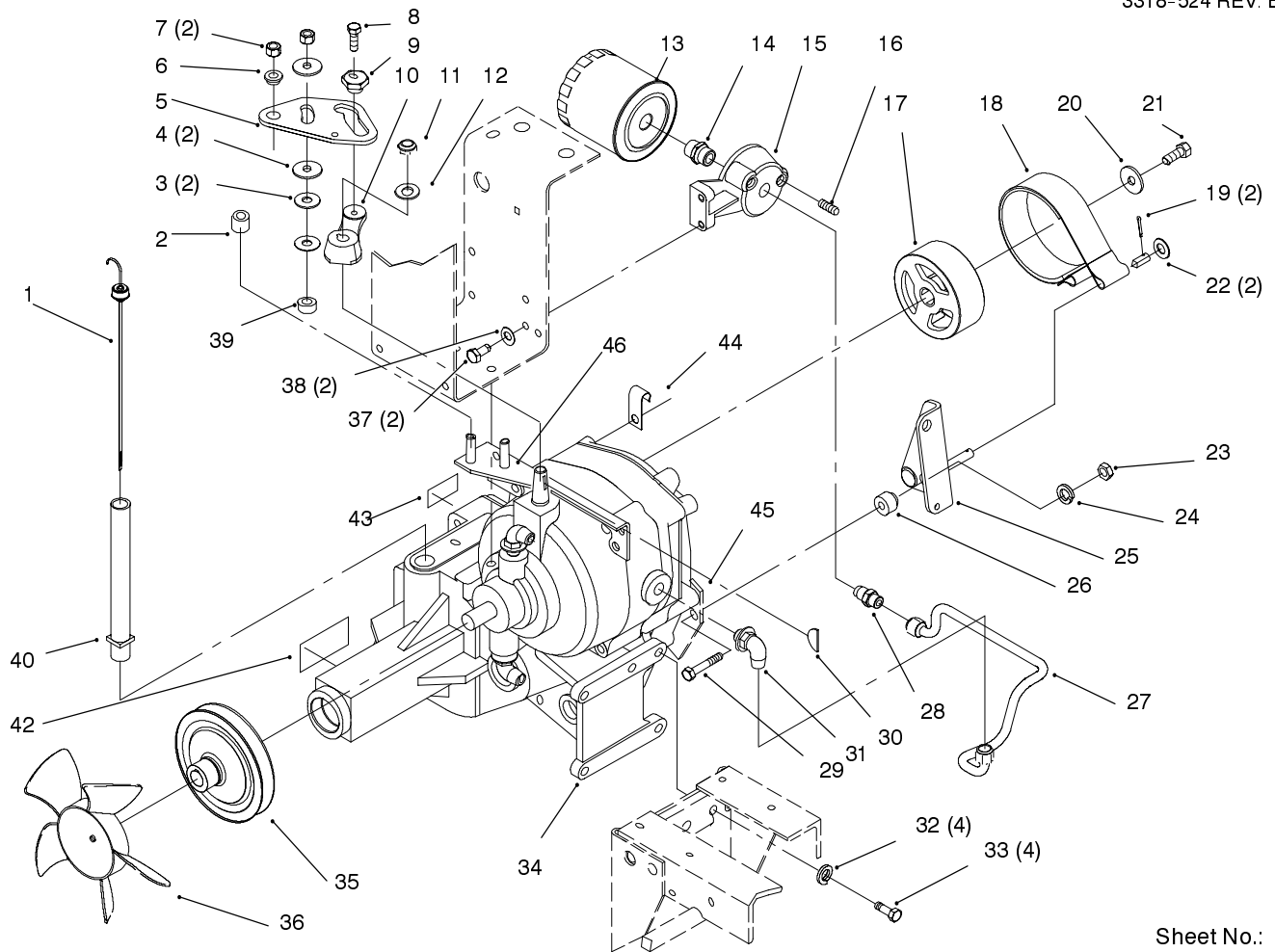


Sheet No.: 26

Engine

Ref. No.	Part No.	Qty.	Description
1	114888	6	Screw
2	94-3737	1	Shield-Heat
3	94-1803	1	Baffle-Deflector
4	12-3270	3	Screw-HH
5	116471	1	Muffler
6	114216	1	ASM-Exh Cover Rear
7	94-1811	1	Engine-Onan
8	114636	1	Nipple
9	114764	1	Elbow
10	114763	1	Nipple
11	288-4	1	Cap-Pipe
12	323-7	4	Screw-HH
13	8830	2	Retainer-"j"
14	116609	1	Plate-Engine
15	3253-21	4	Washer-Spring Lock
16	3217-7	4	Nut-Hex
17	3296-39	4	Nut-Lock
18	3256-24	4	Washer-Flat
19	323-8	4	Screw-HH
20	114215	1	ASM-Exh Cover Front
21	57-9210	2	Gasket-Manifold
22	3253-4	4	Washer-Lock
23	322-3	4	Screw-HH
29	118530	1	Name Plate-Toro

Ref. No.	Part No.	Qty.	Description
30	118560	1	Logo Decal-Power Plus 20



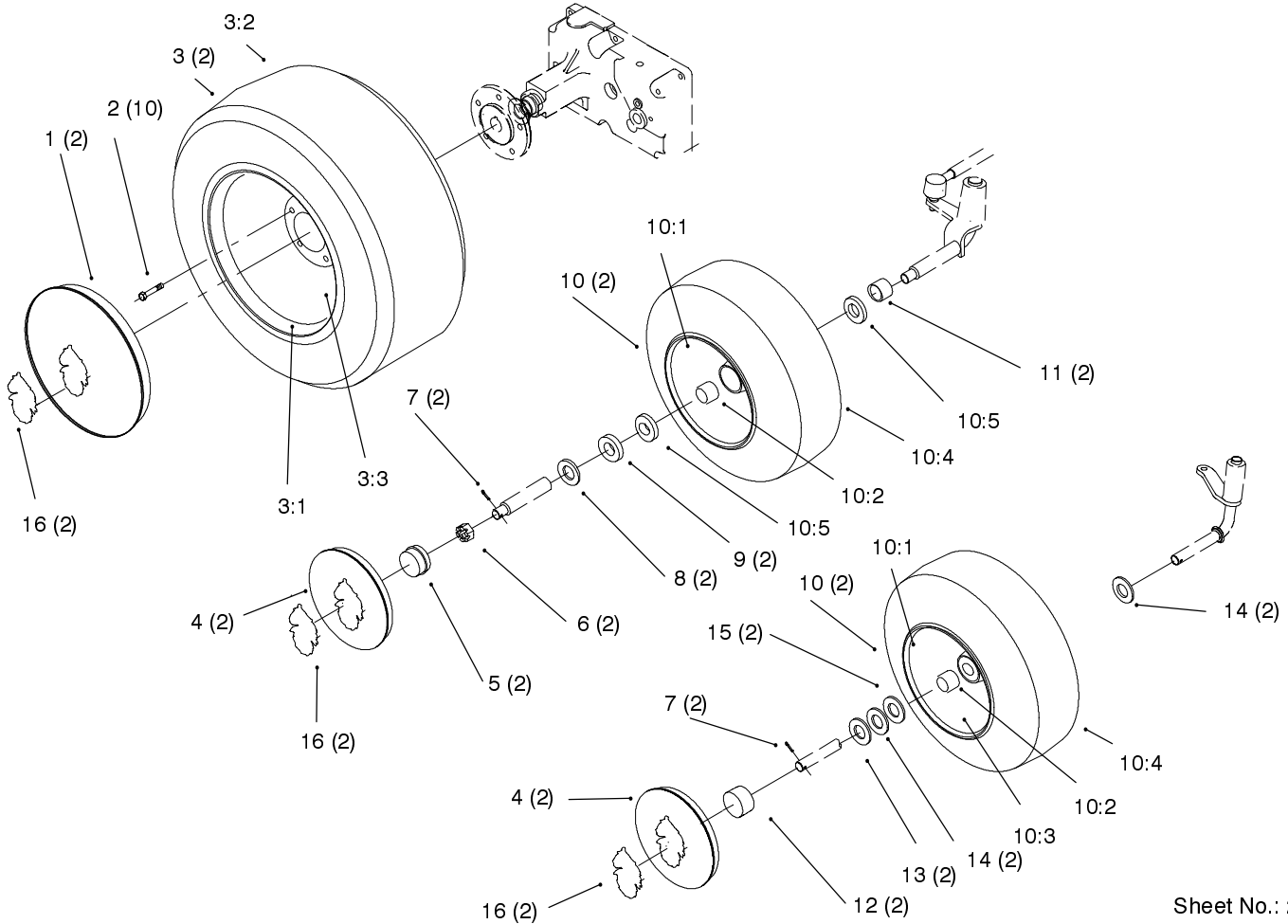
Transmission

Ref. No.	Part No.	Qty.	Description
1	110768	1	Dipstick
2	108326-03	1	Spacer-Pivot
3	100365	2	Washer-Spring Disc
4	100305	2	Washer-Friction
5	108333	1	Plate- Speed Control Cam
6	100309	1	Bushing-Cam Pivot
7	108881	2	Nut-Hex
8	9080196	1	Screw-HH
9	106661	1	Cam-Eccentric
10	108325	1	Arm-Speed Control
11	3296-45	1	Nut
12	3256-26	1	Washer-Flat
13	79-5270	1	Filter-Oil
14	5991	1	Fitting-Filter
15	108323	1	Base-Filter
16	281-10	1	Plug-Pipe
17	106719	1	Drum-Brake
18	109371	1	Brake Band
19	3272-6	2	Pin-Cotter
20	2844	1	Washer-Flat
21	3235-22	1	Screw-HH Lock
22	3256-24	2	Washer-Flat
23	3296-39	1	Nut-Lock
24	3256-4	1	Washer-Flat
25	78-7740	1	ASM-Brake Pivot Arm

Ref. No.	Part No.	Qty.	Description
26	109356	1	Bushing-Brake Pivot
27	79-5020	1	Tube Cmplt- Flatr To Pump
28	102628	1	Fitting-Hyd Tube
29	323-9	1	Screw-HH
30	3257-24	1	Key-Woodruff
31	108365	1	Fitting-Hyd Tube
32	3253-21	4	Washer-Spring Lock
33	323-7	4	Screw-HH
34	93-9814	1	ASM-Transaxle
35	108316	A/R	Pulley-Hydro
36	108393	1	Fan-Hydro
37	322-3	2	Screw-HH
38	3253-4	2	Washer-Lock
39	108327	1	Spacer-Pivot
40	106448	1	Nipple-Trans Filler
41	113193	1	Sensor-Hydro Oil Temp
42	88-2790	1	Decal-Danger
43	94-1834	1	Decal-Unidrive

Part Identified in illustration but not in part list are not used on this model

3318-524 REV. B

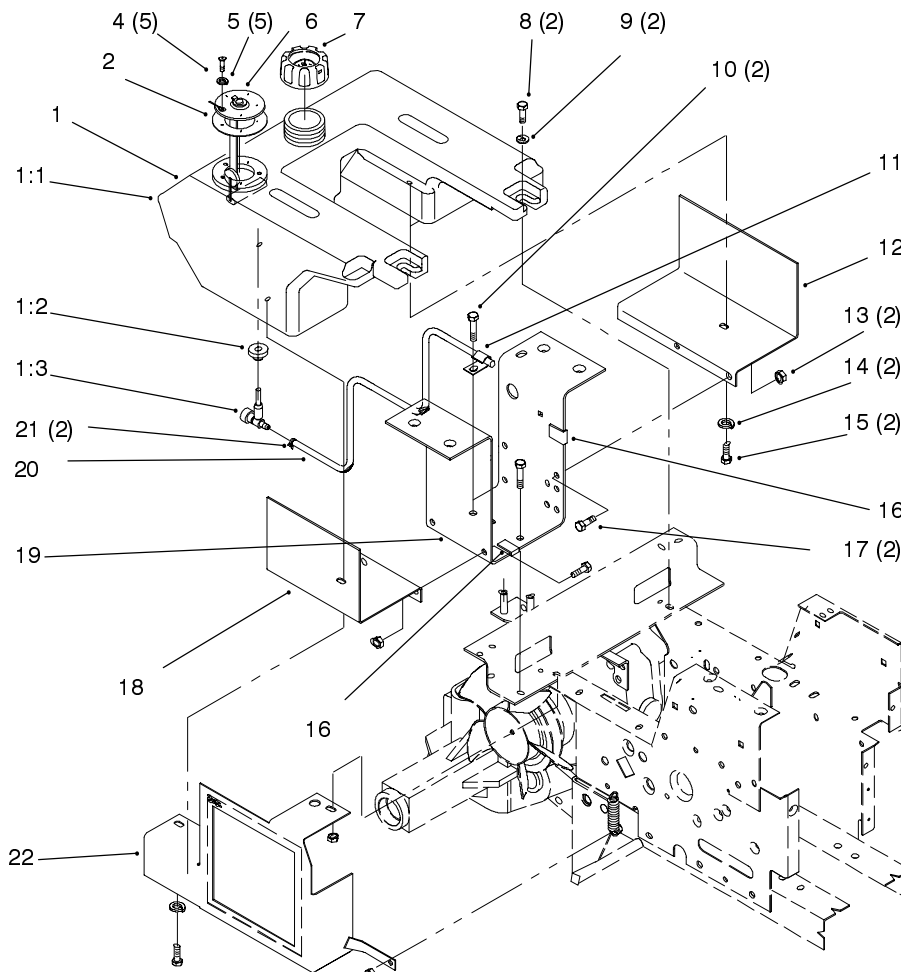


Sheet No.: 29

Wheels And Tires

Ref. No.	Part No.	Qty.	Description
1	94-3731	2	Hubcap 12"
2	83-2720	10	Bolt-Lug
3		2	ASM-Wheel & Tire
3:1	110680	2	Wheel
3:2	116971	2	Tire
3:3	5108	2	Valve-Tire Tubeless
4	94-3730	2	Hubcap 8"
5	112825	2	Dust Cap
6	32136-5	2	Nut-Slotted
7	3272-12	2	Pin-Cotter
8	9202254	2	Washer-Special
9	112823	2	Bearing-Roller
10	93-9806	2	ASM-Wheel & Tire
10:1	117287	1	Wheel/Zerk
*	109500	1	Fitting-Grease
10:2	93-9807	2	Bearing-Cone
10:3	5108	1	Valve Tubeless Tire
10:4	116867	1	Tire
10:5	93-9807	2	Seal-Oil
11	112824	2	Spacer
16	94-3709	4	Horse Head Logo

Ref. No.	Part No.	Qty.	Description



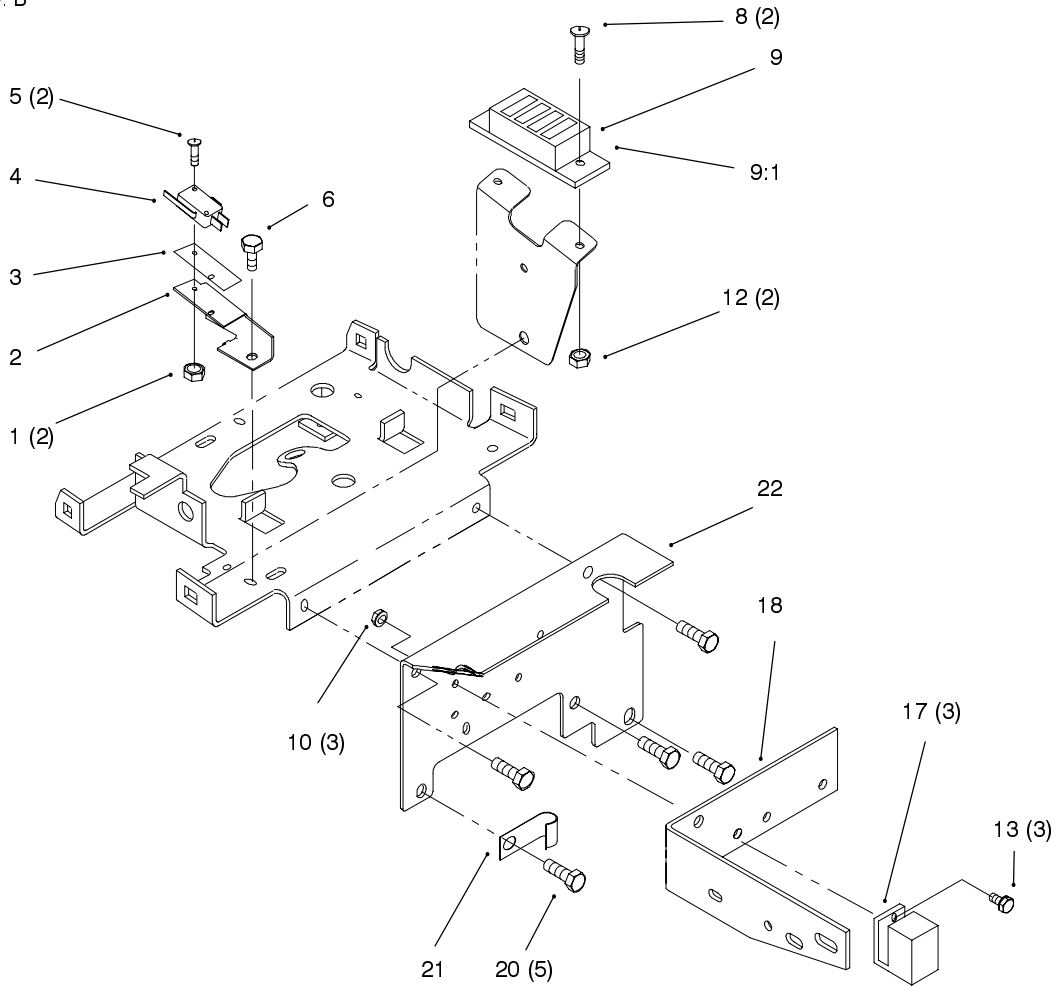
Fuel Tank

Ref. No.	Part No.	Qty.	Description
1	114012	1	Tank-Fuel
2	113372	1	Gasket-Fuel Sender
4	9108074	5	Screw-Machine
5	3253-17	5	Washer-Lock
6	113358	1	Sender-Fuel Level
7	55-3570	1	ASM-Cap
8	9266974	2	Screw-H
9	3256-4	2	Washer-Flat
10	3235-22	2	Screw-HH Lock
11	8830	1	Retainer-'J'
12	108464	1	Support-Fuel Tank LH
13	3296-29	4	Nut-Lock
14	3253-4	2	Washer-Lock
15	322-2	2	Screw-HH
16	519337	2	Clip
17	322-3	4	Screw-HH
18	106236	1	Support-Fuel Tank RH
19	79-4990	1	Bracket-Fender Support
20	92-9513	1	Line-Fuel 47"
21	2412-98	2	Clamp-Hose

Ref. No.	Part No.	Qty.	Description

Part Identified in illustration but not in part list are not used on this model

3318-524 REV. B

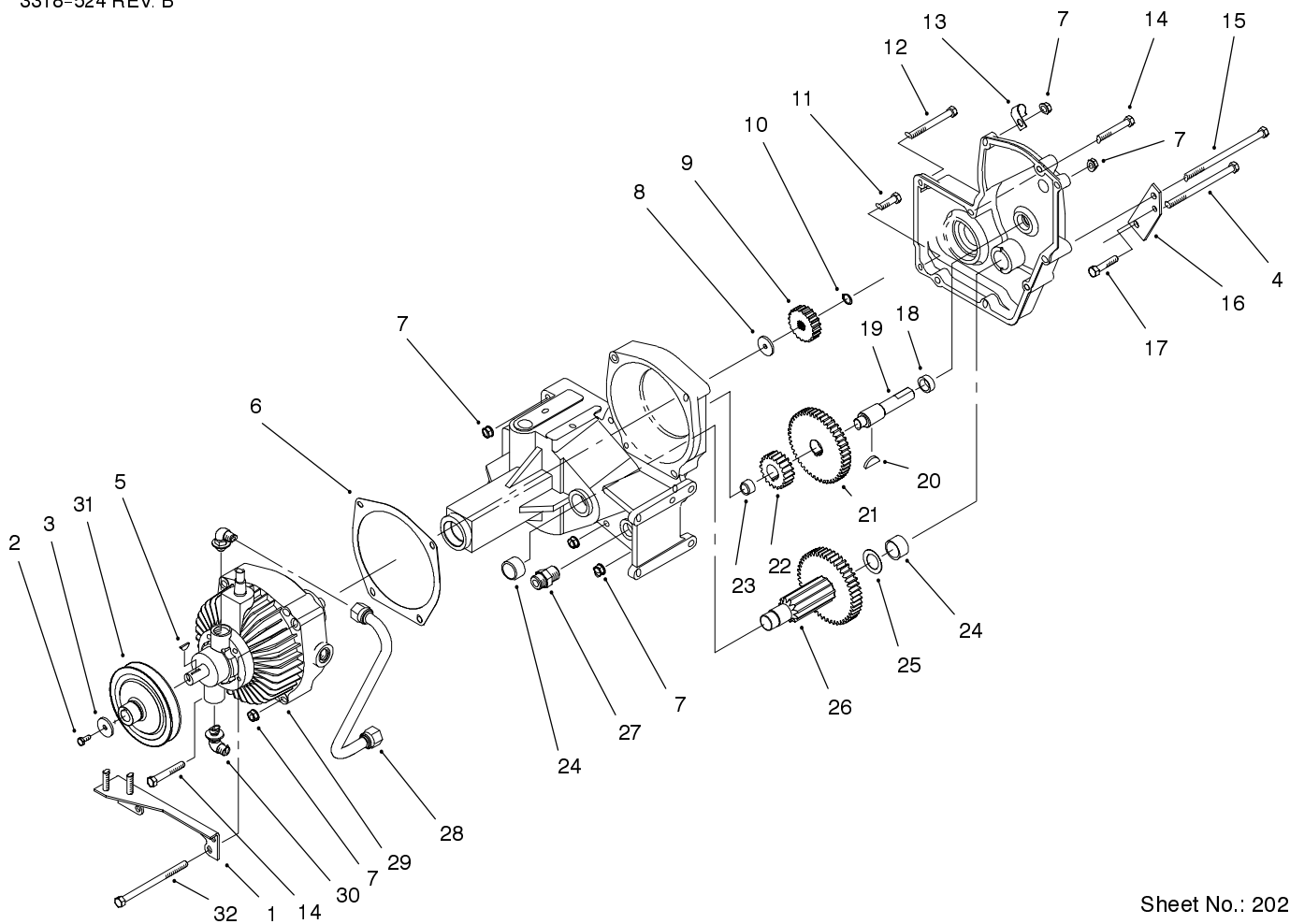


Sheet No.: 33

Front Plate, Relays

Ref. No.	Part No.	Qty.	Description
1	9157324	2	Nut-Lock
2	115411	1	Bracket-Switch
3	111642	1	Barrier-Switch
4	111332	1	Switch-Interlock
5	9104784	2	Screw
6	9266714	1	Screw-HWHTF
8	9107944	2	Screw-Phcr
9	79-3630	1	Wire Harness & Schem.
9:1	120930	1	Fuse Holder
10	3296-42	3	Nut-Lock
12	9157404	2	Nut
13	9601524	3	Screw
17	116397	3	Relay
18	109554	1	Bracket-Belt Guard
20	9266944	4	Screw-HH
21	8830	1	Retainer-"j"
22	79-4020	1	Plate-Front

Ref. No.	Part No.	Qty.	Description



Sheet No.: 202

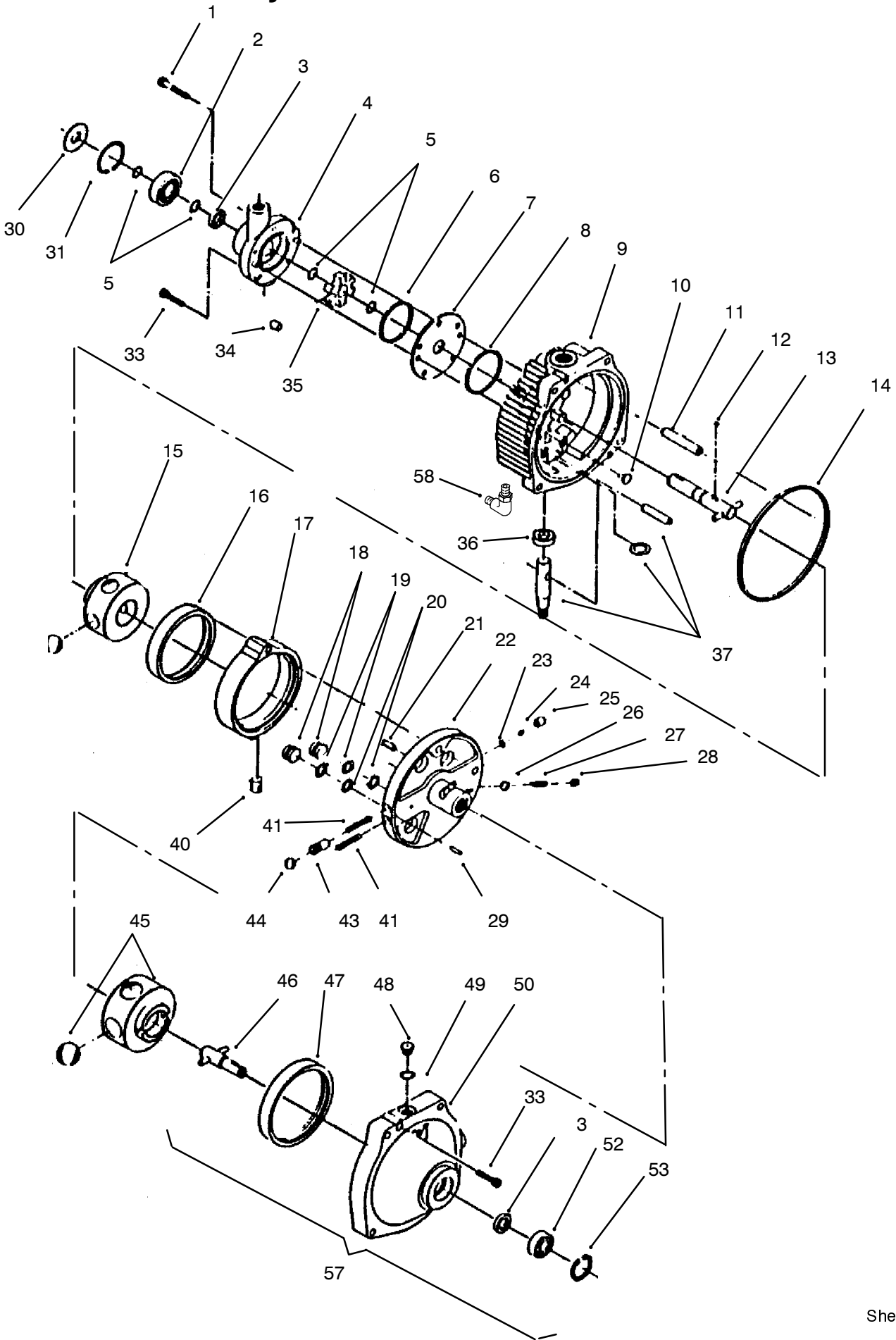
Hydrostatic Transmission (Continued)

Ref. No.	Part No.	Qty.	Description
1	108329	1	ASM-Control Plate
2	9080026	1	Screw-Lock
3	103995	1	Washer
4	323-25	3	Screw-HH
5	937089	1	Key-Woodruff
6	108319	1	Gasket-Pump & Motor
7	3296-39	6	Nut-Lock
8	108366	1	Spacer-Drive Gear
9	109751	1	Gear-20t
10	32120-64	1	Ring-Retaining
11	9080356	1	Screw-HH
12	323-15	2	Screw-HH
13	8830	1	Retainer-"j"
14	9080406	2	Screw-HH
15	323-26	1	Screw HH
16	109367	1	Bracket-Brake
18	7956	1	Washer-Thrust
19	109370	1	Shaft-Brake
20	937099	1	Key
21	109752	1	Gear-46t
22	109742	1	Gear-20t
23	1518	1	Needle Bearing
24	1532	2	Bearing-Needle
25	9547	1	Washer-Thrust
26	109703	1	M-Gear
26:1	101887	1	Gear-46t

Ref. No.	Part No.	Qty.	Description
26:2	101625	1	Pinion Shaft
27	108364	1	Fitting-Hyd Tube
28	111217	1	Tube Cmplt-Suction
29	92-9848	1	Trans-Hydro
30	108365	1	Fitting-Hyd Tube
31	108316	1	Pulley-Hydro

This Page Intentionally Left Blank

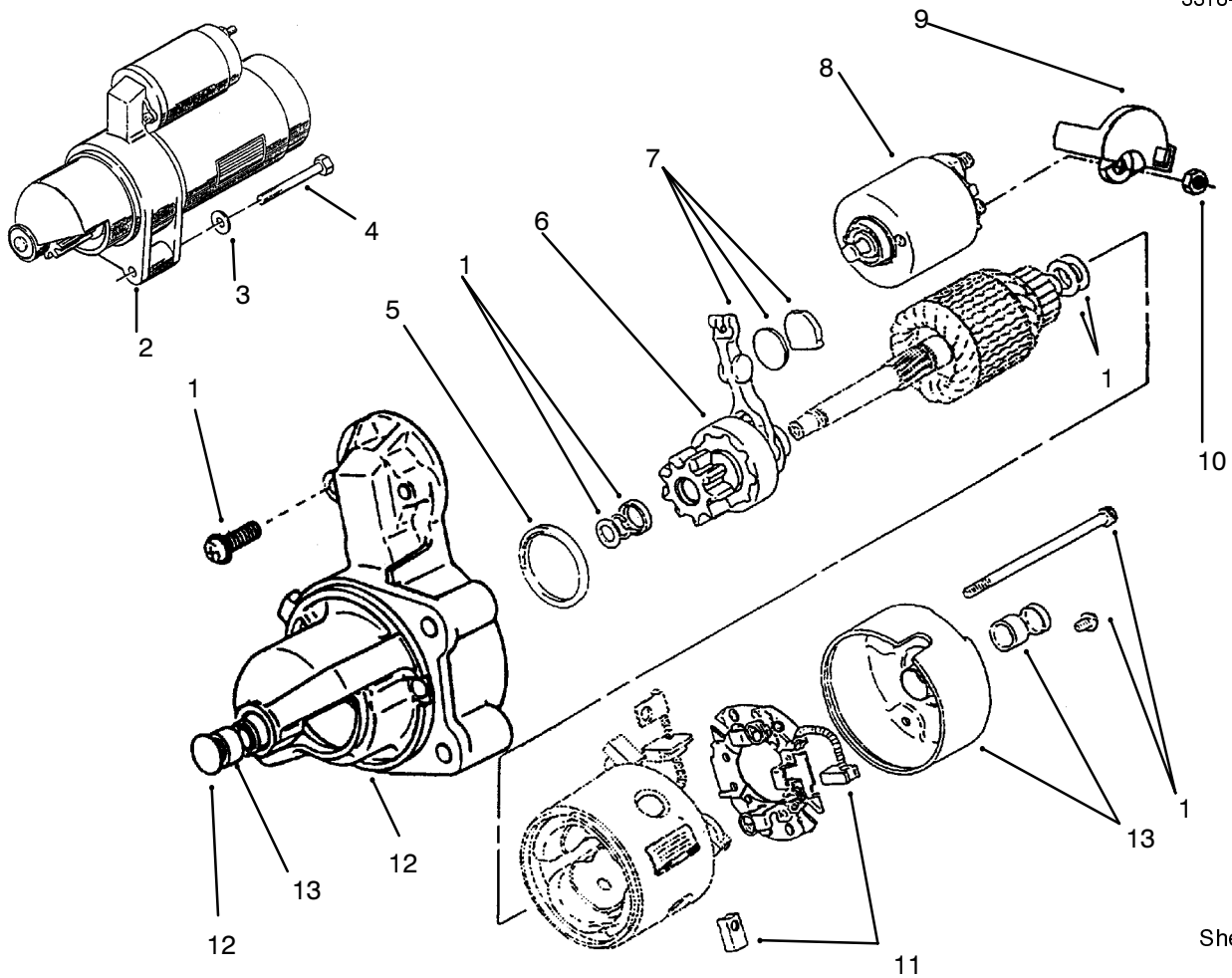
Eaton Hydrostatic Transmission #110-062



Eaton Hydrostatic Transmission #110-062

Ref. No.	Part No.	Qty.	Description	Ref. No.	Part No.	Qty.	Description
1	56-2800	1	Screw-HH Socket				
2	56-2810	1	Bearing-Ball				
3	56-2820	2	Seal-Oil				
4	112637	1	ASM-Pump				
5	56-3090	4	Ring-Retaining				
6	56-2850	1	Ring-Seal				
7	56-2860	1	Plate-Pump				
8	56-2870	1	Ring-Seal				
9	112641	1	ASM-Cover				
10	56-2880	2	Button				
11	56-2890	1	Pin-Dowel				
12	56-2900	1	Pin-Drive				
13	56-2910	1	Shaft-Input				
14	56-2920	1	Ring-Seal				
15	56-2930	1	Rotor/Ball-Pump				
16	113136	1	Race-Pump				
17	93-9810	1	Ring-Cam				
18	56-2950	2	Piston				
19	56-2960	2	Ring-Backup				
20	56-2970	2	O-Ring				
21	56-2980	1	Pin-Coil				
22	56-2990	1	ASM-Pintle				
23	56-3000	2	Ring-Retaining				
24	56-3010	2	Ball-.313 Dia				
25	56-3020	2	Body-Valve				
26	56-3030	1	Ball-.438 Dia				
27	56-3040	1	Spring-Valve				
28	56-3050	1	Plug-Valve				
29	56-3060	1	Pin-Dowel				
30	112652	1	Shield-Grass				
31	112653	1	Ring-Retaining				
33	56-3100	6	Screw-Socket Hd				
34	56-3110	6	Roller				
35	56-3120	1	Carrier				
36	56-3130	1	Seal-Oil				
37	56-3140	1	Kit-Shaft				
40	56-3170	1	Insert-Ring				
41	56-3180	1	Spring-Valve				
43	56-3200	2	Body-Valve				
44	56-3210	2	Ball-.625 Dia				
45	56-3220	1	Rotor/Ball-Motor				
46	56-3230	1	Shaft-Output				
47	56-3240	1	Race-Motor				
48	56-3250	1	ASM-Plug				
49	56-3260	1	O-Ring				
50	93-9811	1	Body				
52	56-3280	1	Bearing-Ball				
53	56-3290	1	Ring-Retaining				
*55	56-3310	1	Kit-Seal Incl.3 6 14 12 19 20 49				
56	56-2940	1	ASM-Ring				
57	93-9812	1	ASM-Body				
58	93-9813	1	Fitting-Hydraulic				

* Not Illustrated



Sheet No.: 401
C-1671

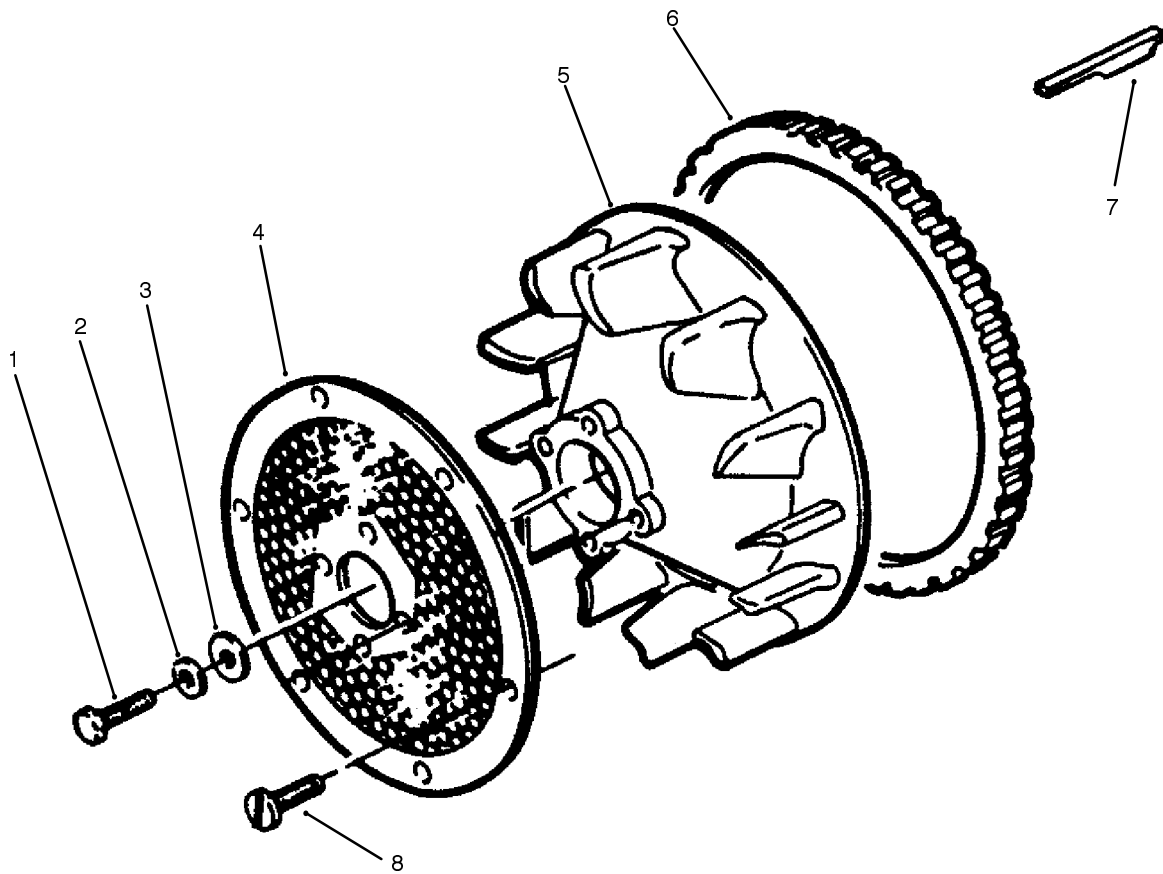
Starter

Ref. No.	Part No.	Qty.	Description
1	62-2760	1	Kit-Starter Hardware
2	71-6040	1	Starter Incl 1-13
3	57-9770	2	Washer-Flat
4	79-6580	2	Screw-Cap
5	72-3950	1	Seal-Dust
6	72-3940	1	Clutch-Starter
7	62-2770	1	Kit-Starter Shift Lever
8	72-3930	1	Kit-Starter Solenoid
9	NN10930	1	Cap-Starter Solenoid
10	92-5935	1	Nut
11	62-2740	1	Kit-Starter Incl Brush, and Holder
12	NN10929	1	Kit-Mounting Bracket
13	62-2730	1	Kit-Bushing, Starter Incl Rear Cap Bushing And Front Bushing

Ref. No.	Part No.	Qty.	Description

Part Identified in illustration but not in part list are not used on this model

3318-524 REV. B



Sheet No.: 403

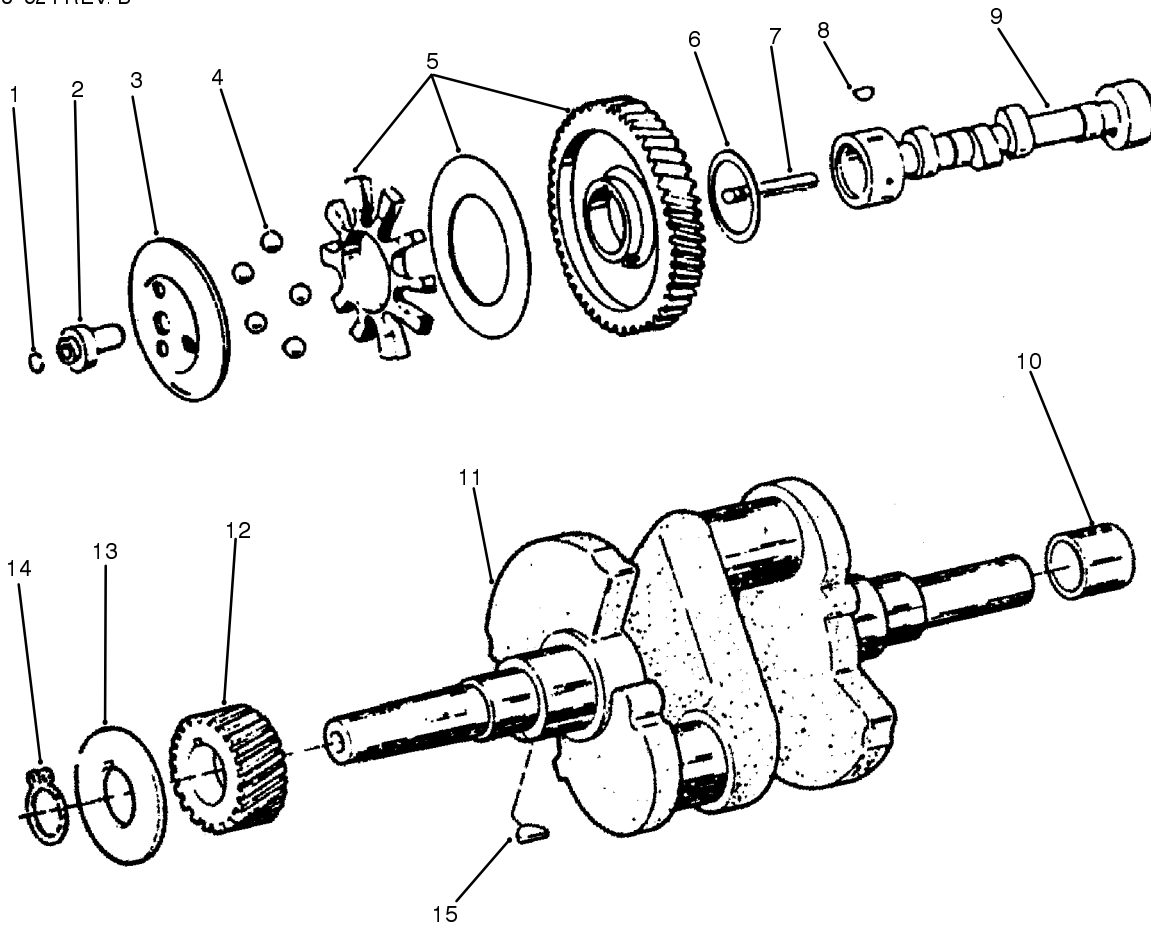
Flywheel

Ref. No.	Part No.	Qty.	Description
1	57-8150	1	Screw-Cap Hex Hd
2	82-1320	1	Washer-Flat
3	59-0810	1	Washer-Flat
4	79-6440	1	Screen-Air Inlet
5	71-5920	1	Flywheel Incl 6
6	57-8180	1	Gear-Ring
7	71-6190	1	Key-Flywheel
8	71-6340	6	Spring-Compression

Ref. No.	Part No.	Qty.	Description

Part Identified in illustration but not in part list are not used on this model

3318-524 REV. B

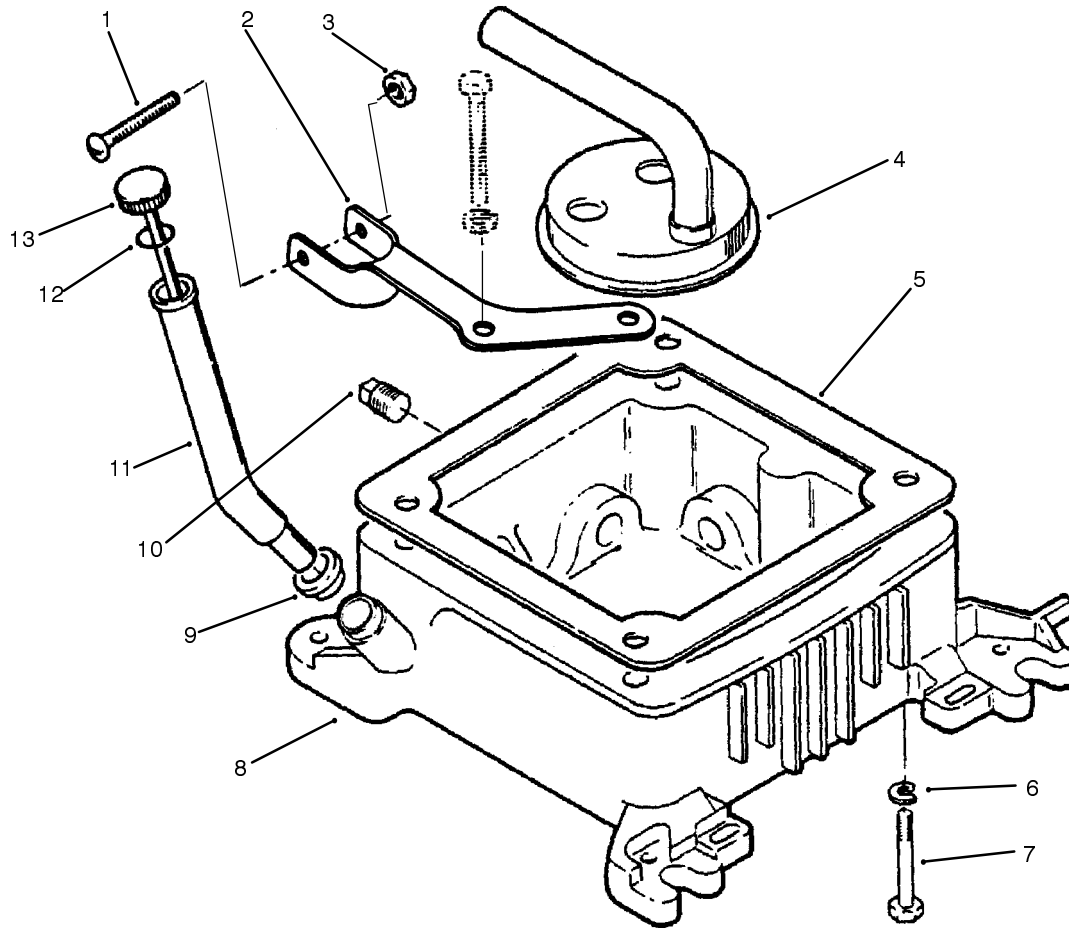


Sheet No.: 404
T-xxxx

Cam & Crankshafts

Ref. No.	Part No.	Qty.	Description
1	57-9090	1	Ring-Retaining
2	57-9130	1	Hub-Governor Cup
3	59-0450	1	Cup-Governor
4	57-9640	1	Ball-Governor
5	57-8210	1	Gear-Camshaft
6	57-8230	1	Washer-Thrust
7	59-0400	1	Pin-Center
8	57-9660	1	Key-Woodruff
9	71-6320	1	Camshaft (220)
10	92-0911	1	Sleeve-Bearing
11	NN10773	1	Crankshaft (220)
12	57-8130	1	Gear-Crankshaft
13	57-8140	1	Washer-Gear
14	57-9710	1	Ring-Retaining
15	57-9660	1	Key-Woodruff

Ref. No.	Part No.	Qty.	Description



Sheet No.: 405

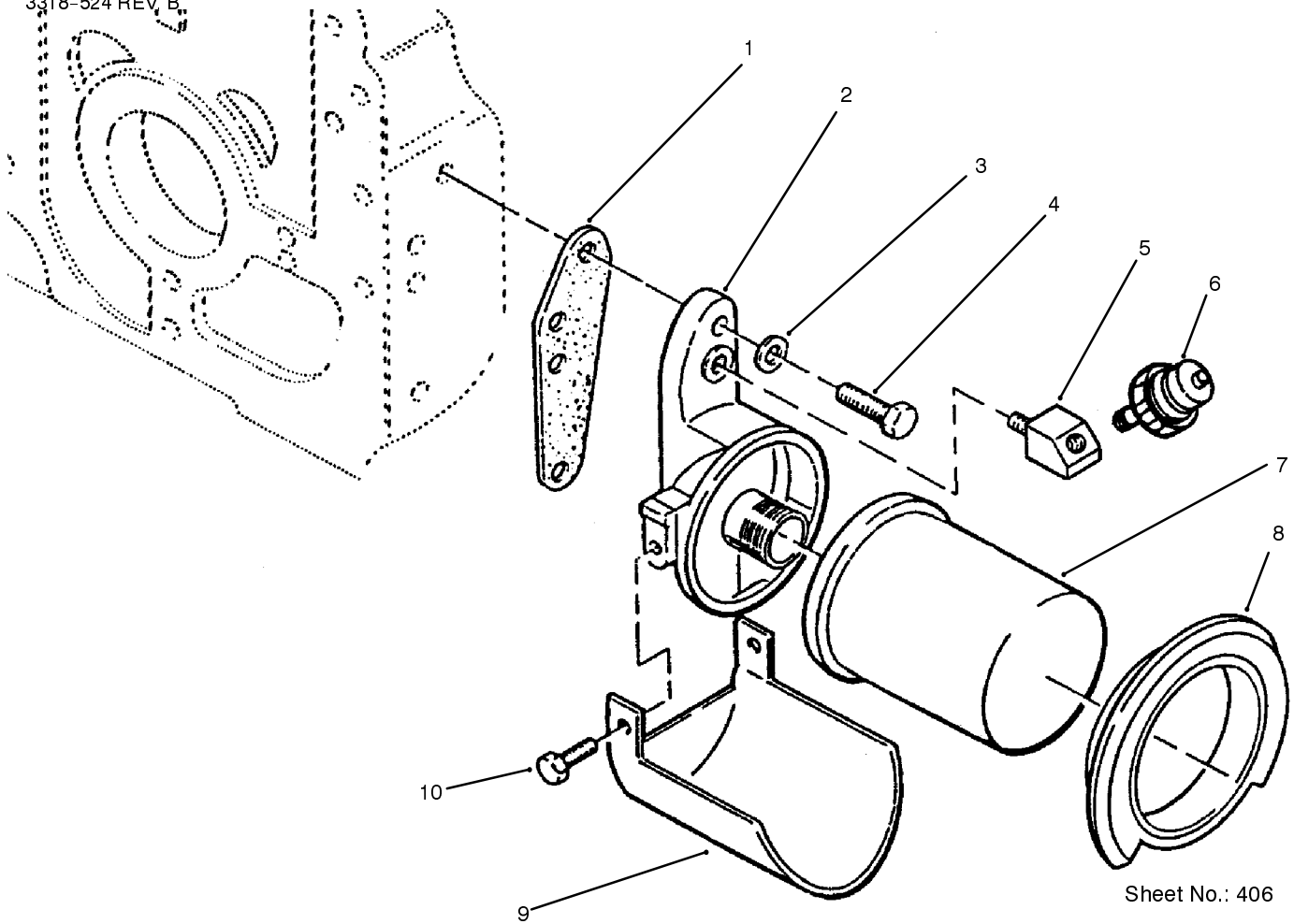
Oil Fill Tube & Base

Ref. No.	Part No.	Qty.	Description
1	82-1560	1	Screw
2	79-6460	1	Bracket-Fill Tube
3	82-1700	1	Nut-Speed
4	57-8490	1	Cup-Intake
5	57-8090	1	Gasket-Base
6	82-1310	4	Washer-Flat
7	NN10379	4	Screw-Cap Hex Hd
8	71-5730	1	Base-Oil
9	71-6170	1	Seal-Oil
10	82-1130	2	Plug-Square Head
11	NN10448	1	Tube-Oil Fill
12	57-9610	1	O Ring-Cap
13	NN10159	1	Cap-Indicator Oil Fill

Ref. No.	Part No.	Qty.	Description

Part Identified in illustration but not in part list are not used on this model

3318-524 REV. B

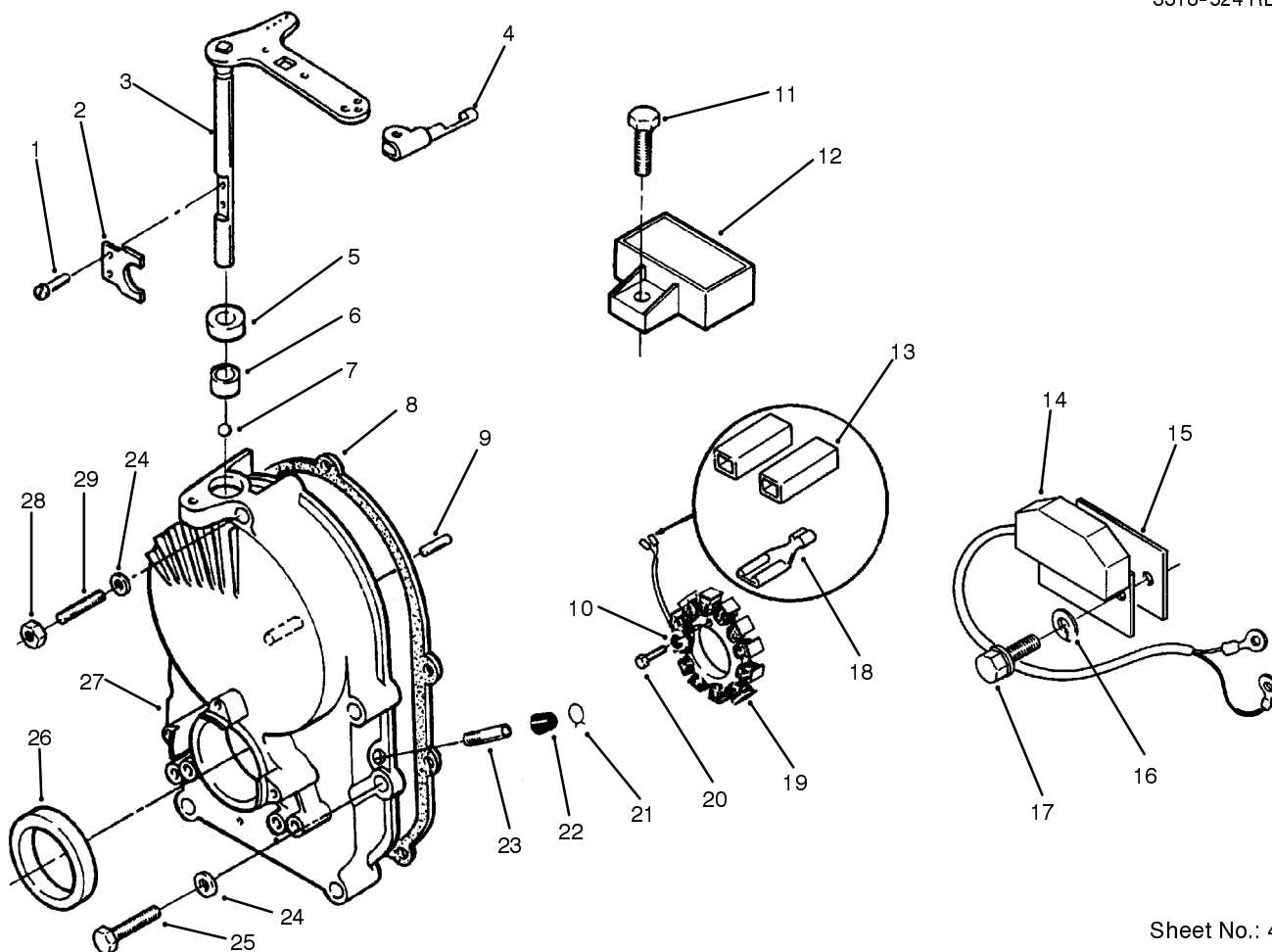


Sheet No.: 406

Oil Filter

Ref. No.	Part No.	Qty.	Description
1	79-6470	1	Gasket-Adapter
2	82-0500	1	Adapter-Oil Filter
3	57-9750	2	Washer-Flat
4	NN10373	2	Screw-Cap Hex Hd
5	59-0640	1	Elbow-Strree
6	94-1845	1	Switch-Pressure
6	94-1845	1	Switch-Pressure
7	NN10143	1	Filter-Oil
8	82-0680	1	Filter-Gasket Oil
9	NN10894	1	Drain-Oil Filter
10	82-1510	2	Screw-Hex Hd

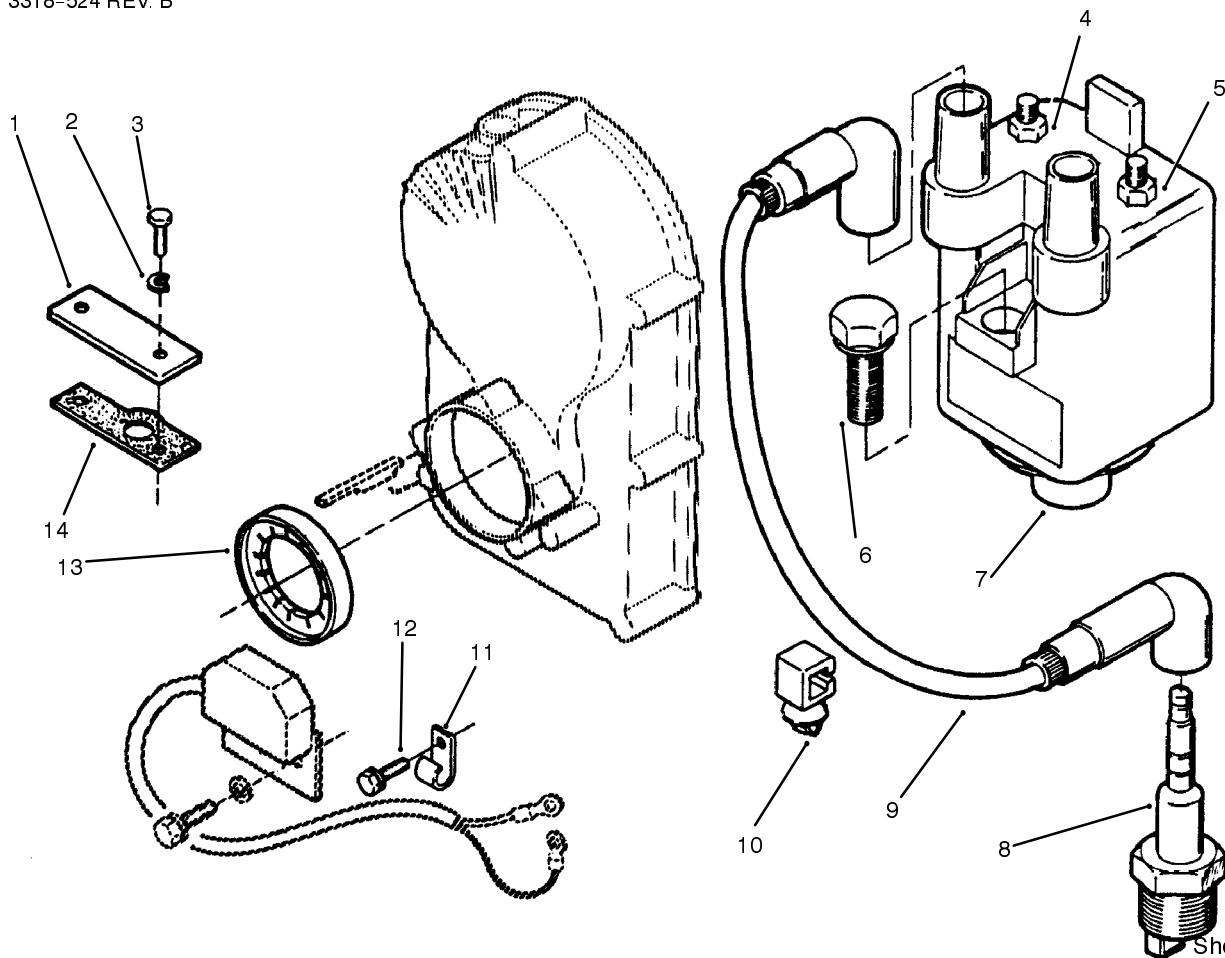
Ref. No.	Part No.	Qty.	Description



Sheet No.: 407

Gear Case & Ignition Controls

Ref. No.	Part No.	Qty.	Description	Ref. No.	Part No.	Qty.	Description
1	59-0950	2	Screw-Mach Pan Hd	22	59-0370	1	Cap-Vacuum Port
2	59-0420	1	Yoke-Governor	23	59-0360	1	Tube-Vacuum Port
3	NN10826	1	Shaft & Arm Governor	24	57-9750	5	Washer-Flat
4	57-9730	1	Clip-Retaining	25	NN10545	4	Screw-Hex Hd
5	94-6680	1	Seal-Oil	26	57-9580	1	Seal-Oil
6	57-9650	1	Bearing-Governor	27	NN10825	1	Kit-Gearcase
7	57-9630	1	Bearing-Ball Gov Shaft	28	59-1130	1	Nut-Hex
8	71-6360	1	Gasket-Mntg	29	59-0790	1	Stud-Gear Cover
9	59-0740	1	Pin-Dowel				
10	3253-2	3	Washer-Lock				
11	59-1080	1	Screw-Cap Flg Hd				
12	57-9430	1	Regulator-Voltage 20 Amp				
13	82-1000	2	Body-Term Conn Kit				
14	71-6380	1	Control-Ignition				
15	71-6410	1	Insulator-Ignition				
16	82-1660	2	Washer-Lock				
17	NN10394	2	Screw-Hex Washer Hd				
18	59-0590	2	Terminal-Stator Leads				
19	92-0967	1	Stator				
20	82-1500	3	Screw-Mach Hex Hd				
21	57-9550	1	Clamp-Vacuum Port Cap				

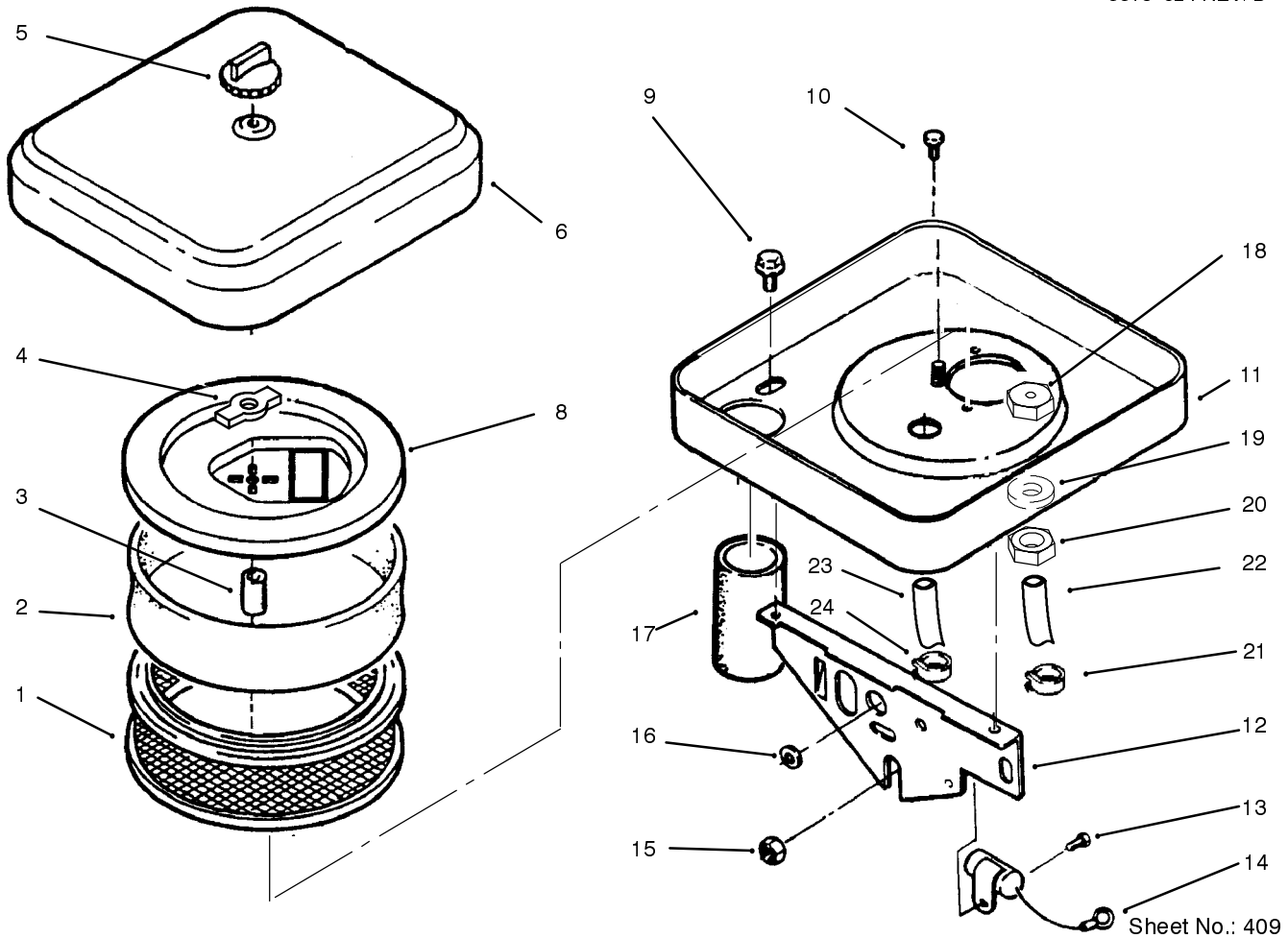


Sheet No.: 408

Ignition Electronics

Ref. No.	Part No.	Qty.	Description
1	71-5990	1	Cover-Plunger
2	82-1340	2	Washer
3	82-1360	2	Screw-Hex Hd
4	71-6440	1	Nut-Hex Flg Hd
5	71-6430	1	Nut-Hex Flg Hd
6	71-6460	2	Screw-Hex Washer Hd
7	71-6000	1	Coil-Battery Ignition
8	57-9340	2	Plug-Spark
9	NN10253	1	Cable-Spark Plug 9"
9	NN10254	1	Cable-Spark Plug 18.5"
10	71-6060	1	Clip-Wire
11	71-6220	2	Clip-Wire
12	NN10545	1	Screw-Hex Hd
13	71-6010	1	Rotor-Ignition
14	79-6490	1	Gasket-Plate

Ref. No.	Part No.	Qty.	Description



Sheet No.: 409

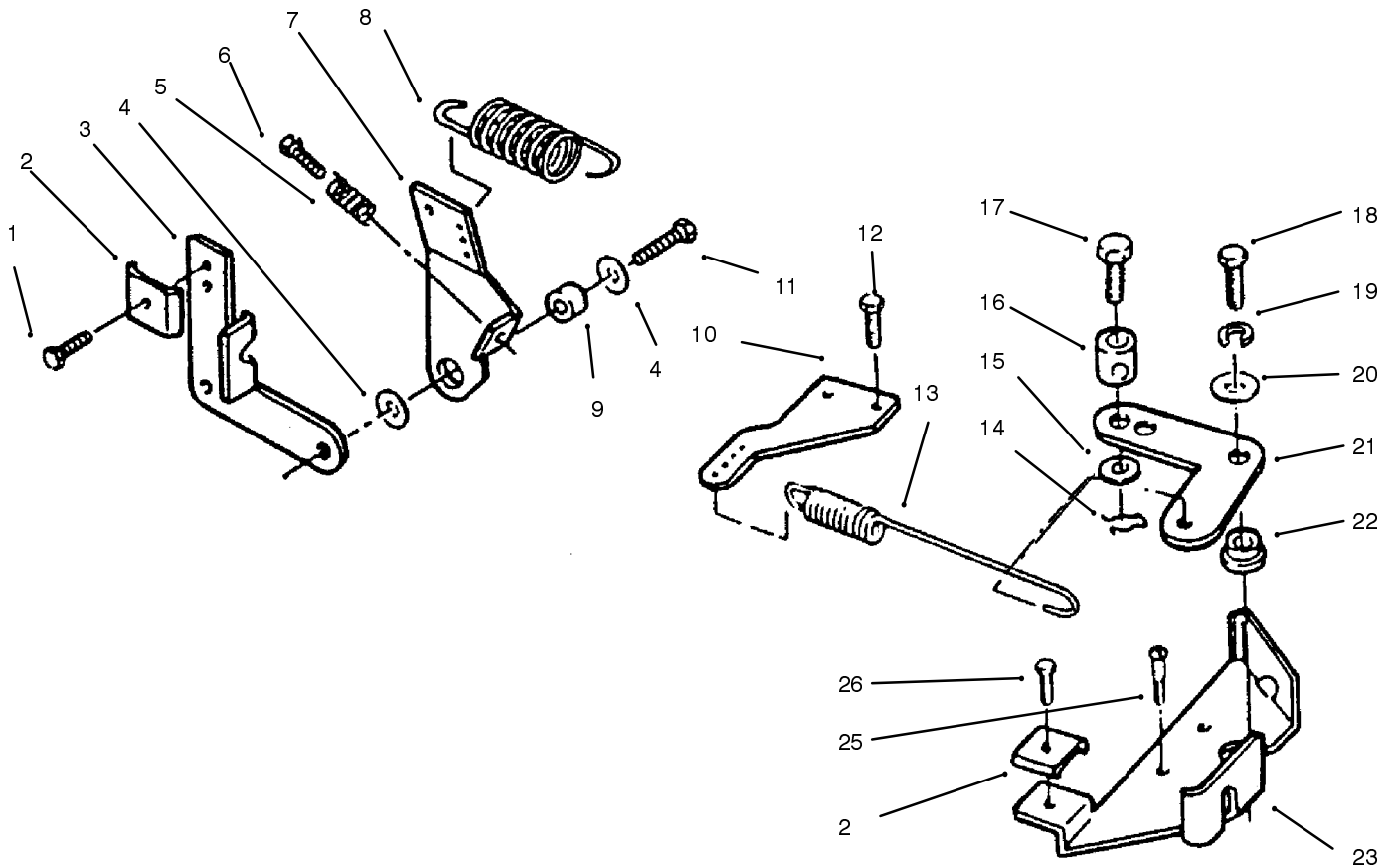
Air Cleaner

Ref. No.	Part No.	Qty.	Description
1	NN10774	1	Element-Air Cleaner
2	NN10176	1	Wrapper-Element
3	79-6510	1	Spacer-Stud
4	79-6520	1	Spacer-Nylon
5	82-1670	1	Knob
6	NN10446	1	Cover-Air Cleaner
8	82-0650	1	Cover-Element
9	82-1550	2	Screw-Hex Washer Hd
10	92-0915	2	Screw-Mach Hex Hd
11	79-6330	1	Housing-Air Cleaner
12	79-6340	1	Support-Air Cleaner
13	NN10390	1	Screw-Hex Washer Hd
14	59-1180	1	Capacitor
15	82-1690	1	Nut-Hex Washer Hd
16	71-6140	1	Grommets-Rubber
17	NN10187	1	Tube-Air Intake
18	NN10239	1	Adaptrer-Carburetor
19	NN10190	1	Gasket
20	NN10132	1	Nut P220g
21	82-1080	1	Clamp
22	NN10447	1	Hose
23		1	Clamp
24		1	Hose

Ref. No.	Part No.	Qty.	Description

Part Identified in illustration but not in part list are not used on this model

3318-524 REV. B

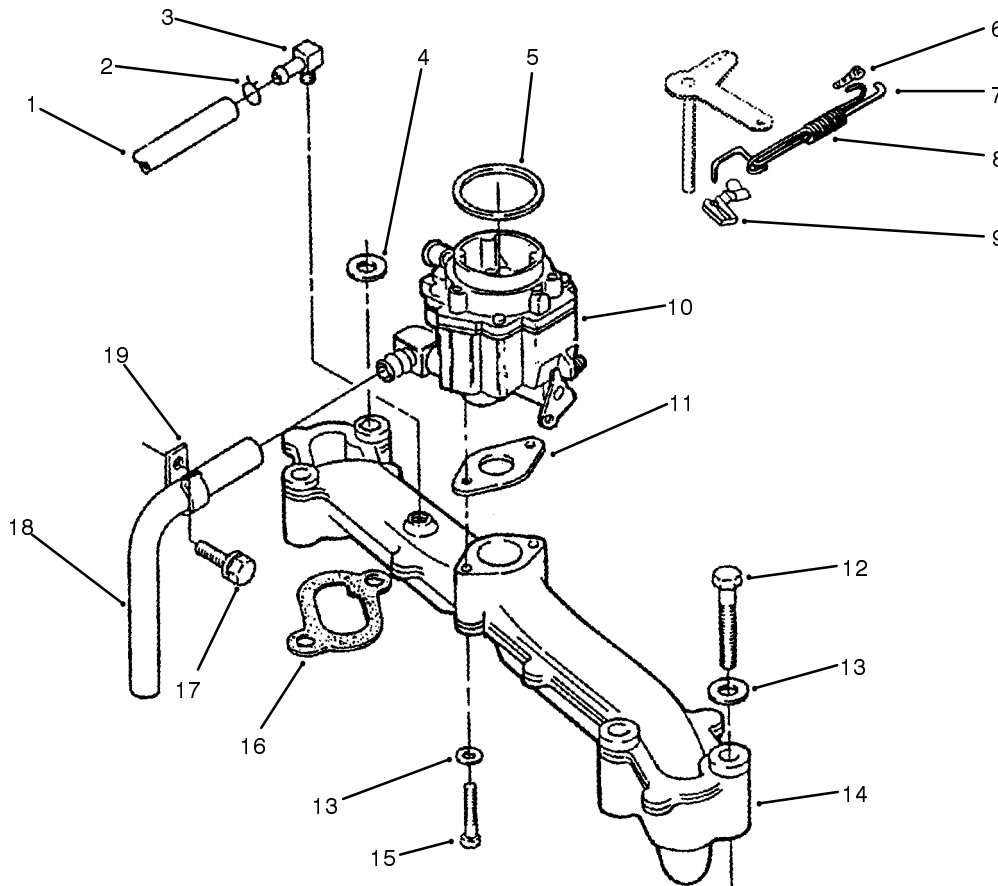


Sheet No.:410

Governor

Ref. No.	Part No.	Qty.	Description
1	72-3900	1	Screw-Tapping Hex Hd
2	57-9190	2	Clamp-Cable
3	79-6360	1	Bracket-Cable
4	59-0830	2	Washer-Flat
5	59-0430	1	Spring-Idle Setting
6	59-1030	1	Screw-Tapping Hex Hd
7	92-0922	1	Arm-Governor Control
8	57-9100	1	Spring-Governor
9	57-9120	1	Bushing-Control Arm
10	79-6420	1	Adapter-Governor Arm
11	59-1100	1	Screw-Lock Hd
12	NN10403	1	Screw-Self TAP Flg Hd
13	NN10932	1	Spring-Governor
14	59-0720	1	Pin-Cotter
15	201270	1	Washer
16	57-9120	1	Bushing-Control Arm
17	72-3890	1	Screw-Hex Hd
18	82-1370	1	Screw-Hex Hd
19	82-1620	1	Washer-Lock
20	59-0830	1	Washer-Flat
21	201256	1	Link-Governor Control

Ref. No.	Part No.	Qty.	Description
22	79-6400	1	Bushing-Governor Cont
23	79-6390	1	Bracket-Governor Cont
25	201327	1	Screw-Self TAP Flg Hd
26	59-1000	3	Screw



Sheet No.: 411

Intake Manifold & Carburetor

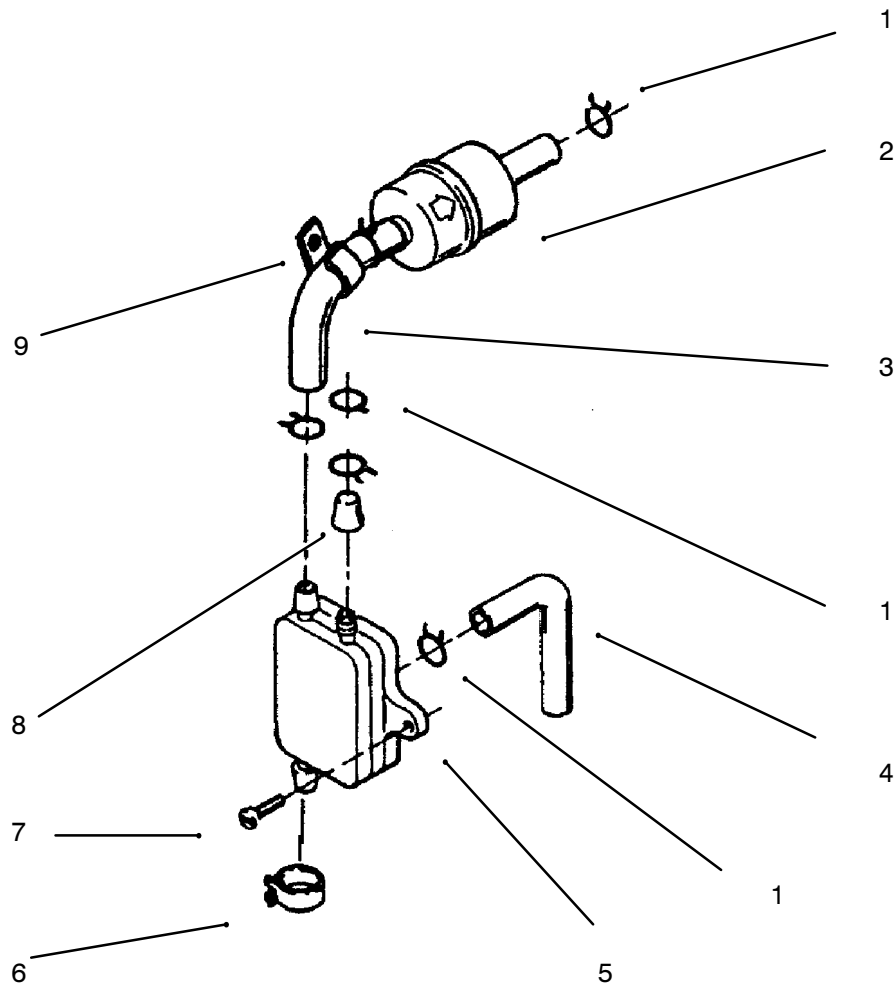
Ref. No.	Part No.	Qty.	Description	Ref. No.	Part No.	Qty.	Description
1	82-1120	1	Hose-Breather	19	71-6220	1	Clip-Wire
2	82-1080	2	Clamp-Hose .50" Dia				
2	82-1090	1	Clamp-Hose .44" Dia				
3	82-1070	1	Fitting-Barbed				
4	NN10362	1	Washer-Flat				
5	57-9620	1	O Ring				
6	57-9700	1	Clip-Retaining				
7	92-0919	1	Rod-Governor Control				
8	NN10877	1	Spring-Governor Rod				
9	94-6680	1	Clip-Retaining				
+10	94-1847	1	Kit-Carburetor (220)				
*	94-1843	1	Kit-Repair				
*	94-1844	1	Kit-Repair				
*	94-1848	1	Jet-Altitude				
*	94-1806	1	Decal-Ident				
*	94-1846	1	Harness-Wire				
*	94-1848	1	Jet-Altitude				
11	82-0850	1	Gasket-Carb/Manifold				
12	NN10375	4	Screw-Hex Hd				
13	82-1350	6	Washer				
14	92-0918	1	Manifold-Intake (220)				
15	NN10545	2	Screw-Hex Hd				
16	71-5980	2	Gasket-Manifold				
17	82-1540	1	Bolt-Hex Hd				
18	NN10306	1	Hose-Fuel 30"				

+ Lower emission carburetor repairable by authorized Dealer

*Not Illustrated

Part Identified in illustration but not in part list are not used on this model

3318-524 REV. B



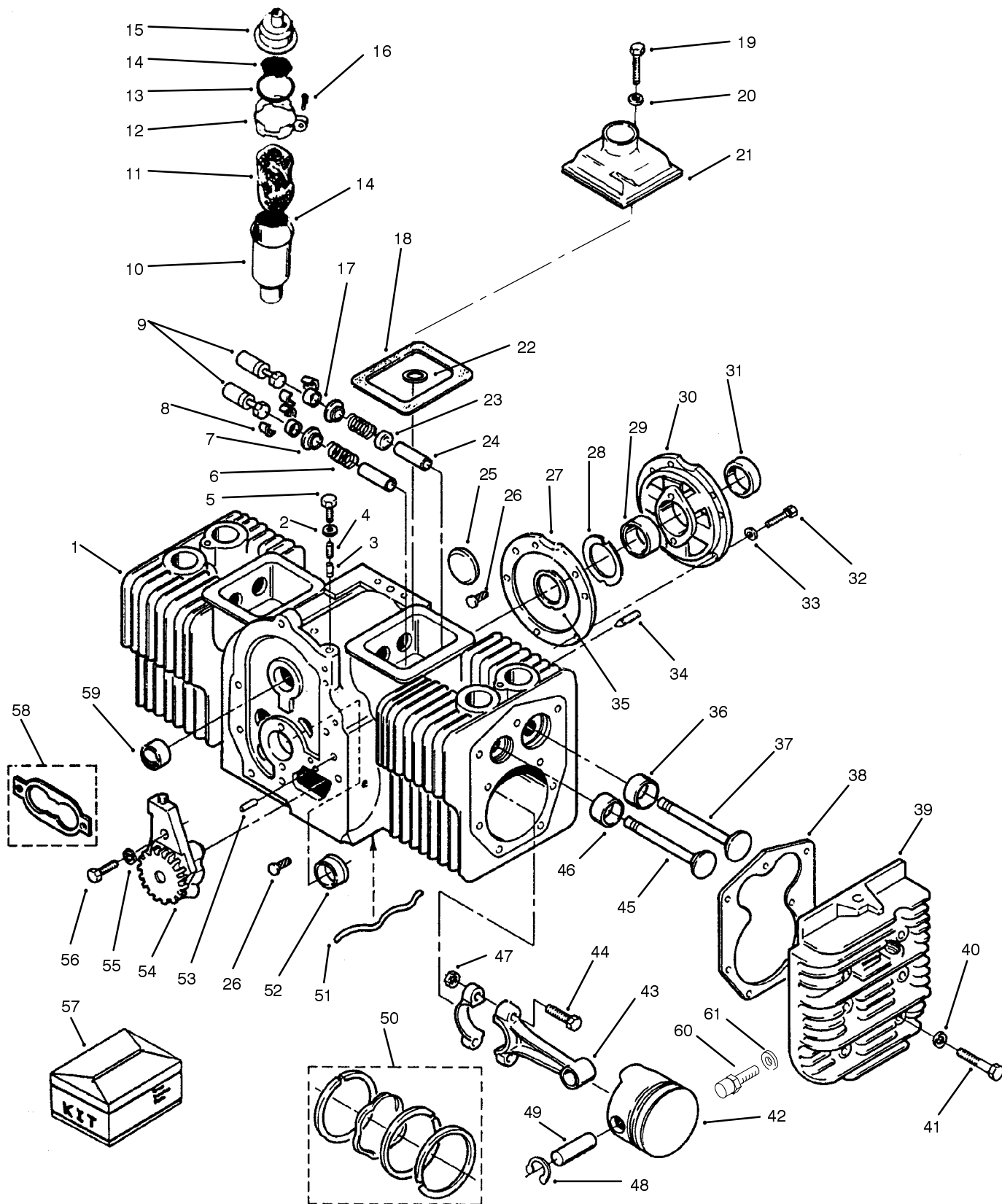
Sheet No.: 413

Fuel Filter & Pump

Ref. No.	Part No.	Qty.	Description
1	82-1080	6	Clamp-Hose .50" Dia
2	71-5960	1	Filter-Fuel
3	NN10790	1	Line-Fuel 12"
4	NN10302	1	Line-Fuel 7"
5	57-9080	1	Pump-Fuel
6	950154	2	Clamp-Corbin
7	59-1050	2	Screw St Pan Hd
8	NN10211	1	Cap-Fuel Fitting
9	NN10048	1	Clamp

Ref. No.	Part No.	Qty.	Description

Engine Cylinder Block

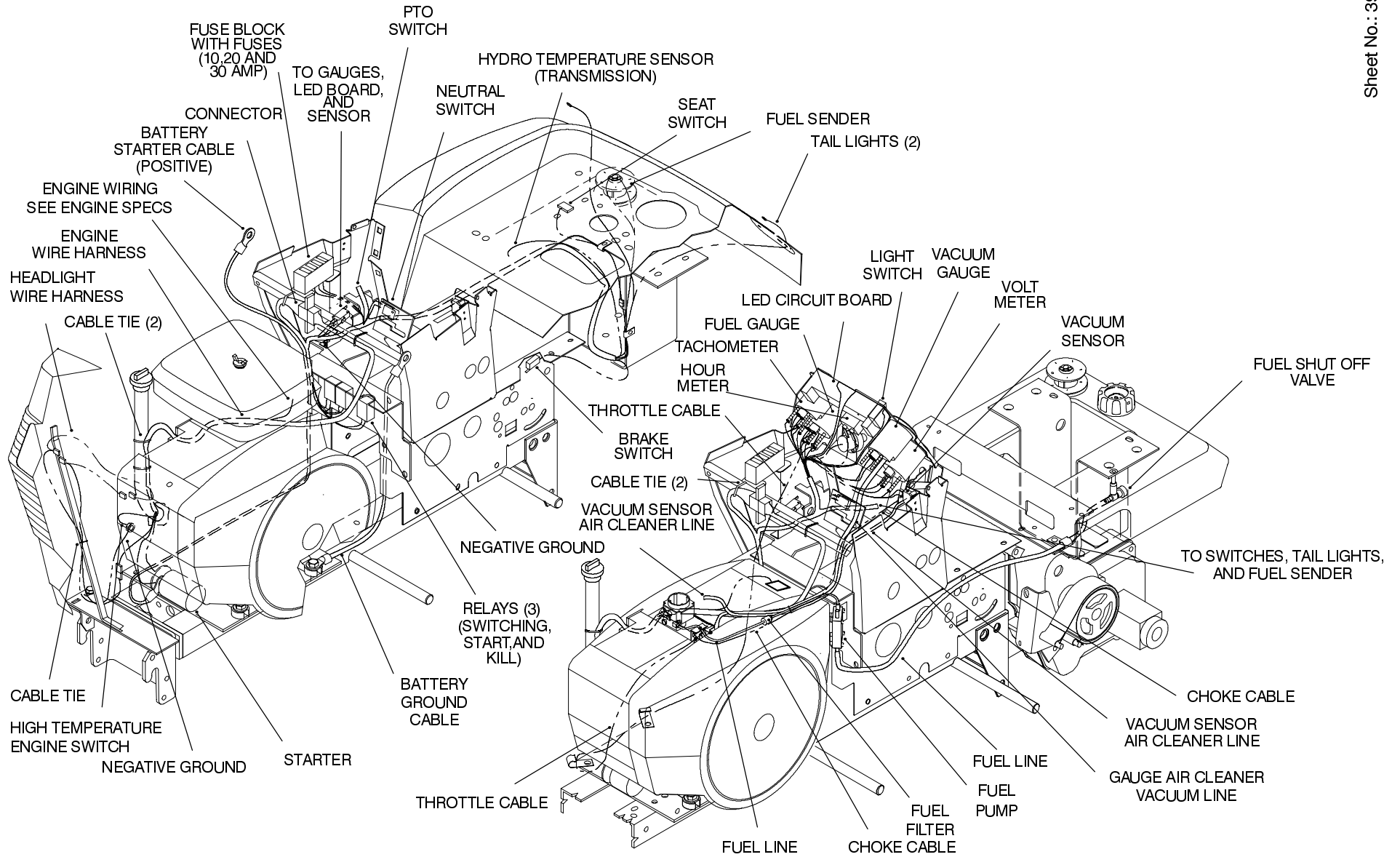


Engine Cylinder Block

Ref. No.	Part No.	Qty.	Description	Ref. No.	Part No.	Qty.	Description
1	92-0900	1	Block-Cylinder (Short)	43	57-8440	2	.020" Undersize
2	57-9760	1	Washer-Flat	43	59-0250	2	.030" Undersize
3	57-8470	1	Plunger-Bypass Valve	44	57-8410	4	Bolt-Connecting Rod
4	59-0280	1	Spring-Bypass Valve	45	71-5780	2	Spring-Clutch
5	59-0910	1	Screw-Cap Hex Hd	46	59-0100	2	Insert-Valve Seat Exh
6	71-5790	4	Spring-Valve	*	59-0110	2	.002" Oversize
7	71-5800	4	Washer-Valve Spring	*	59-0120	2	.005" Oversize
8	NN10082	8	Lock-Valve Spring	*	59-0130	2	.010" Oversize
9	57-8450	4	Tappet-Valve STD	*	59-0140	2	.025" Oversize
*	59-0260	4	.002" Oversize	47	57-9790	4	Nut
10	82-0540	1	Tube-Breather	48	57-9720	4	Ring-Retaining
11	57-8580	1	Baffle-Breather Tube	49	71-6310	2	Pin-Piston
12	82-0530	1	Clamp-Tube	50	92-0905	2	Kit-Ring Piston STD
13	82-0570	1	O-Ring-Cap	*	92-0906	2	.005" Oversize
14	82-0560	2	Screen-Tube	*	92-0907	2	.010" Oversize
15	82-0550	1	Cap & Valve-Breather	*	92-0908	2	.020" Oversize
16	82-1480	1	Screw-TAP Round Hd		92-0909	2	.030" Oversize
17	71-5830	4	Cap-Valve	51	59-0290	1	Tube-Oil
18	57-8280	2	Gasket-Cover	52	57-8020	1	Bearing-Crankshaft
19	NN10370	2	Screw-Cap Hex Hd	*	57-8030	1	.010" Undersize
20	57-9740	2	Washer-Flat	*	57-9360	1	.002" Undersize
21	NN10821	1	Cover-Valve	*	57-9800	1	.020" Undersize
22	59-0820	1	Washer-Flat	*	59-0010	1	.030" Undersize
23	71-6180	2	Seal-Valve	53	59-0750	2	Pin Align
24	71-6250	2	Guide-Valve	54	57-8480	1	Pump-Oil
	71-6260	2	Guide-Valve	55	82-1340	2	Washer
25	57-9690	1	Plug-Welch	56	82-1370	2	Screw-Hex Hd
26	59-0730	4	Pin-Drive	57	71-6290	1	Kit-Gasket Complete
27	57-8010	1	Gasket-Bearing Plate	58	57-8460	1	Kit-Gasket
28	57-8170	A/R	Shim-Crankshaft .005"	59	57-8000	2	Bearing-Camshaft
29	57-8050	1	Bearing-Crankshaft Rear	60	NN10274	1	Switch-High Temp
*	57-8060	1	.010" Undersize	61	NN10924	1	Washer- Lock
*	59-0020	1	.002" Undersize				
*	59-0030	1	.020" Undersize				
*	59-0040	1	.030" Undersize				
30	82-0020	1	Plate-Bearing				
31	57-9590	1	Seal-Oil				
32	59-0880	5	Screw-Cap Flg Hd				
33	3253-5	5	Washer-Lock				
33	82-1310	5	Washer-Flat				
34	3247-4	2	Screw-HS				
35	57-8160	2	Washer-Thrust				
36	59-0050	2	Insert-Valve Seat Intake				
*	59-0080	2	.010" Oversize				
37	71-5770	2	Valve-Intake				
38	57-8330	2	Gasket-Head				
39	59-0180	1	Head-Cylinder RH				
*	71-5810	1	Head-Cylinder LH				
40	57-9770	18	Washer-Flat				
41	59-0900	18	Screw-Cap Hex Hd				
42	82-1800	2	Piston STD INC 48-49				
*	92-0902	2	.010" Oversize				
*	92-0903	2	.020" Oversize				
*	92-0904	2	.030" Oversize				
43	57-8420	2	Rod-Conn STD INC 44 & 47				
43	57-8430	2	.010" Undersize				

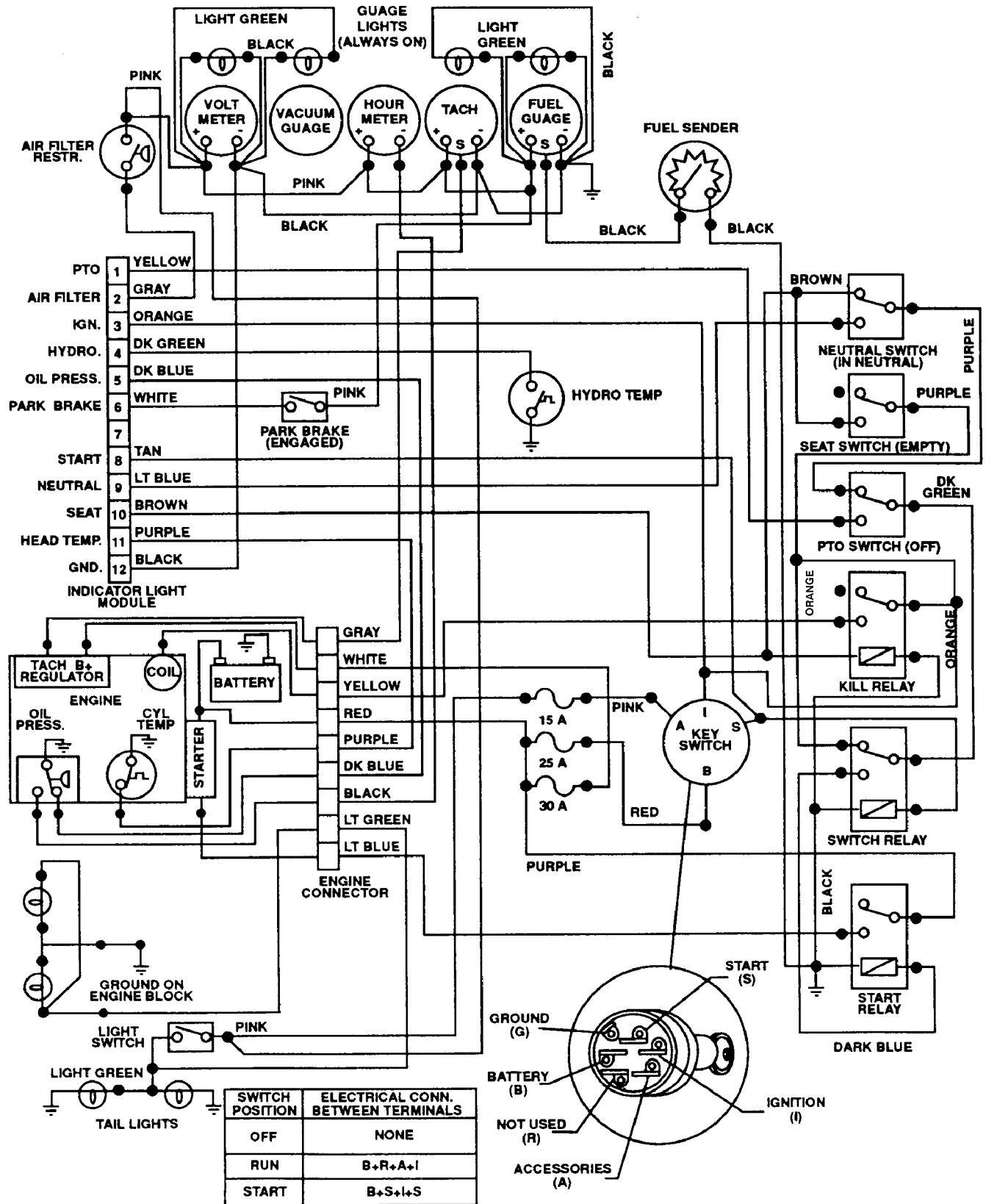
* Not Illustrated

Wire Harness & Cable Routing

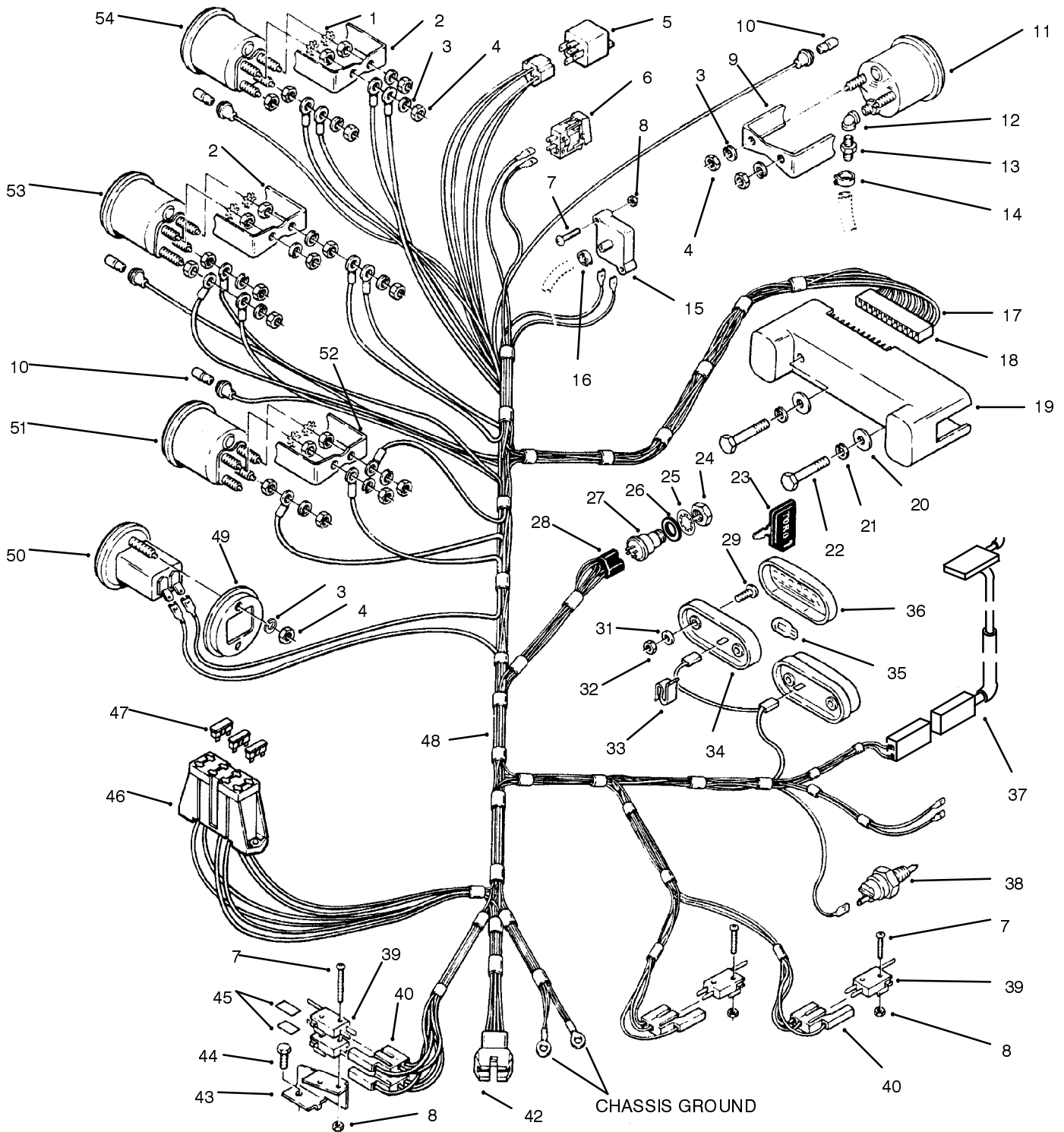


520-H AND 520-HE WIRE HARNESS, CABLE AND TUBE ROUTING
TWIN CYLINDER

Electric Schematic



520-Wire Harness Attachment & Component's



520-Wire Harness Attachment & Component's

Ref. No.	Part No.	Qty.	Description	Ref. No.	Part No.	Qty.	Description
1	3253-17	8	Washer - Lock				(Incl. Ref. #1-4)
2	78-0080	2	Bracket - Mounting	54	78-0030	1	Voltmeter
3	3255-25	2	Washer - Lock				(Incl. Ref. #1-4)
4	3217-27	A/R	Nut - Hex.	*	117257	1	Tie - Snap In
5	116397	3	Relay				
6	92-9844	1	Switch - Light				
7	910948	4	Screw				
8	915732	6	Nut - Elastic				
9	78-0100	2	Bracket - Mounting				
10	79-0450	4	Lamp - .938" Long				
11	79-2660	1	Gauge - Vacuum (Incl. Ref. #3-4 & 9)				
12	943021	1	Elbow				
13	105076	1	Fitting - Straight				
14	950154	1	Clamp - Corbin				
15	94-1836	1	Sensor - Air Cleaner				
16	114767	1	Clamp				
17	114633	12	Terminal				
18	114632	1	Connector - Male				
19	79-2130	1	Board - Light Circ				
20	3256-21	2	Washer - Flat				
21	3253-15	2	Washer - Lock				
22	910783	2	Screw				
23	62-7770	2	Key - Padded Ignition				
24	101884	1	Nut - Special				
25	9201604	1	Washer - Lock				
26	920262	1	Washer				
27	111216	1	Switch - Ignition (Incl. Ref. #24-26)				
28	105302	1	Connector Ignition Switch (Ref. Item #48)				
29	910809	4	Screw				
31	3254-1	4	Washer - Lock				
32	3219-14	4	Nut				
33	3023	2	Clip - Speed				
34	105202	2	Base - Taillight w/Bulb				
35	109045	2	Bulb - Light				
36	112564	2	Lens - Taillight				
37	38-1420	1	Switch - Seat				
38	113193	1	Switch - Oil Temp				
39	111332	2	Switch - Interlock				
40	111498	5	Connector				
42	113119	1	Connector - Fem				
43	111488	1	Support - Switch				
44	926671	3	Bolt				
45	111642	2	Barrier - Switch Insulator				
46	120930	1	Body - Fuse (Ref. Item #48)				
47	218-578	1	Fuse - 10 Am				
	109101	1	Fuse - 20 Amp				
	NN10277	1	Fuse - 30 Amp				
48	79-3630	1	Wire Harness				
49	78-3220	1	Bracket - Mountin				
50	78-0020	1	Hourmeter (Incl. Ref. #3-4 & 49)				
51	78-0060	1	Tachometer (Incl. Ref. #1, 3-4 & 5 52)				
52	114018	1	Bracket - Mounting				
53	78-0040	1	Gauge - Fuel				

Toro Part Number Index

Part No.	Page No.	Ref. No.	Qty.	Description
1121	8	14	1	Key
1278	9	35	1	Washer-Shim
1481	2	14	1	Fitting-Grease
1481	3	9	1	Fitting-Grease
1518	22	23	1	Needle Bearing
1532	22	24	2	Bearing-Needle
1538	21	11	1	Needle Bearing
1644	17	7	1	ASM-Drawbar Hitch
2844	15	20	1	Washer-Flat
3023	11	27	3	Clip
3765	10	21	1	Washer-Shim
3765	13	8	1	Washer-Shim
5108	16	3:3	2	Valve-Tire Tubeless
5210	3	12	6	Washer-Shim
5618	2	15	1	Ring-Retaining
5618	17	11	2	Ring-Retaining
5666	13	4	1	Bushing-Nyliner
5979	1	17	2	Bushing-Nyliner
5983	7	6	1	Bushing
5983	9	1	3	Bushing
5983	9	1	A/R	Bushing
5983	13	6	1	Bushing
5991	15	14	1	Fitting-Filter
6216	2	10	1	Pin
6229	8	17	1	Bearing
6449	21	14	2	Seal-Oil
6472	2	2	1	Bearing-Flanged
6658	12	13	1	Race-Bearing
6659	12	12	2	Retainer
6662	12	16	1	Bearing-Needle
6663	12	15	1	Seal-Oil
6718	22	1:2	2	Screw-Weld
7443	12	9	1	Pulley-Engine
7456	5	10	4	Clamp
7879	10	20	1	Bushing
7956	22	18	1	Washer-Thrust
8616	17	20	2	Spring
8830	4	33	1	Retainer-"j"
8830	8	12	1	Retainer-"j"
8830	14	13	2	Retainer-"j"
8830	17	28	1	Retainer-"j"
8830	19	11	1	Retainer-"j"
8830	20	21	1	Retainer-"j"
8830	22	13	1	Retainer-"j"
9038	17	12	1	Grip
9416	21	13	2	Bearing
9547	22	25	1	Washer-Thrust
9548	2	18	4	Washer-Thrust
9865	2	19	2	Bearing-Thrust
100304	9	16	2	Bearing-Cam Roller
100305	15	4	2	Washer-Friction
100309	15	6	1	Bushing-Cam Pivot
100365	15	3	2	Washer-Spring Disc
100656	9	22	1	Bearing-Cam Return
101017	17	15	1	Lock-Hitch
101623	21	6	8	Pinion Gear 11t
101625	22	26:2	1	Pinion Shaft
101707	17	23	1	Lock-Attachment
101711	17	25	1	Plate-Front Hitch
101750	17	19	1	Rod-Latch Pivot
101751	17	27	1	Rod-Lock
101757	7	24	1	Spacer

*Not Illustrated

Toro Part Number Index (cont.)

Part No.	Page No.	Ref. No.	Qty.	Description
101850	1	15	1	Rod-Hood Stop
101853	9	38	1	Spring-Compression
101887	22	26:1	1	Gear-46t
101889	21	4	2	Axle Diff Gear
102025	10	3	1	Spacer
102374	8	19	1	Pin-Pivot
102628	7	27	1	Fitting-Hyd Tube
102628	15	28	1	Fitting-Hyd Tube
102644	17	3	2	Plate-Hitch
102809	10	1	1	Nut-Hex Lock
102872	12	2	1	Shaft-PTO
102881	1	3	2	Headlamp
103125	9	29	1	Spring-Extension
103125	13	7	1	Spring-Extension
103478	12	7	1	Housing-Clutch
103995	22	3	1	Washer
104841	7	16	1	Spring
104859	13	16	1	Spacer-Link
105061	21	7	1	Gear Diff Bull 43t
105202	11	30	2	Base-Light
105269	17	5	1	Pin-Drawbar Hitch
105302	20	9:1	1	Connector
105316	17	14	2	Cap-Rod
105453	12	10	1	Key-Sq
105503	11	21	2	Bushing
105524	11	20	2	Bracket-Pivot
105763	21	19	2	Hub-Wheel
105797	1	18	2	Ring-Ext Ret
105797	17	18	8	Ring-Ext Ret
105876	21	5	2	Snap Ring
106236	19	18	1	Support-Fuel Tank RH
106267	7	18	1	Grommet
106269	8	9	2	Bearing-Flange
106448	15	40	1	Nipple-Trans Filler
106522	8	4	1	Chain-Lift
106634	17	8	1	Pin-Tool
106661	15	9	1	Cam-Eccentric
106695	12	20	1	Ring-Push On
106719	15	17	1	Drum-Brake
106826	21	20	2	Washer-Thrust
106948	18	8	1	Tray-Battery
107069	5	5	6	Nut-Speed
107374	21	8	4	Washer
107938	10	25	1	Spring-Extension
108312	21	22	1	Gasket-Transaxle
108316	15	35	A/R	Pulley-Hydro
108316	22	31	1	Pulley-Hydro
108319	22	6	1	Gasket-Pump & Motor
108323	15	15	1	Base-Filter
108325	15	10	1	Arm-Speed Control
108327	15	39	1	Spacer-Pivot
108328	22	1:1	1	Plate
108329	22	1	1	ASM-Control Plate
108333	15	5	1	Plate-Speed Control Cam
108357	21	12	1	Seal-Oil(.
108361	21	15	1	Axle-Rear LH
108362	21	27	1	Axle-Rear RH
108363	21	10	2	Pin-Locating
108364	22	27	1	Fitting-Hyd Tube
108365	7	1	2	Fitting-Hyd Tube
108365	15	31	1	Fitting-Hyd Tube
108365	22	30	1	Fitting-Hyd Tube

*Not Illustrated

Toro Part Number Index (cont.)

Part No.	Page No.	Ref. No.	Qty.	Description
108366	22	8	1	Spacer-Drive Gear
108393	15	36	1	Fan-Hydro
108457	4	35	1	Nut-Push On
108457	5	14	1	Nut-Push On
108464	19	12	1	Support-Fuel Tank LH
108496	9	26	1	ASM-Rod Cam Pivot
108680	9	30	1	Spring-Compression
108716	10	16	1	Plate-Neutral Cam
108717	10	15	1	Spacer-Cam Plate
108881	15	7	2	Nut-Hex
108881	17	4	6	Nut-Hex
108881	21	2	4	Nut-Hex
108904	9	18	1	Rod-Thd
109045	11	30:1	2	Lamp-Wedge
109189	3	13	1	Bearing-Flange
109356	15	26	1	Bushing-Brake Pivot
109367	22	16	1	Bracket-Brake
109370	22	19	1	Shaft-Brake
109371	15	18	1	Brake Band
109372	9	36	A/R	ASM-Brake Rod
109459	1	5	2	Clamp-Headlight
109494	1	2	1	Bezel-RH Headlight
109495	1	1	1	Bezel-LH Headlight
109553	18	2	1	Boot-Battery Cable
109554	20	18	1	Bracket-Belt Guard
109703	22	26	1	M-Gear (Press)
109742	22	22	1	Gear-20t
109751	22	9	1	Gear-20t
109752	22	21	1	Gear-46t
109842	12	5	1	Bearing-Ball
109989	11	6	4	Spacer
110124	7	25	1	Hose ASM-Hydraulic
110125	7	19	1	Hose ASM-Hydraulic
110189	9	17	2	Rod End ASM
110656	13	19	1	Trunnion
110665	13	22	A/R	ASM-Bracket
110669	13	17	1	Plate-PTO
110680	16	3:1	2	Wheel
110768	15	1	1	Dipstick
111052	13	23	1	Rod-PTO Clutch
111071	11	12	2	Bumper-Rubber
111196	21	3	2	End Cap-Differential
111199	21	1	2	Bearing Ball
111201	21	21	1	Case-Transaxle
111216	6	17	1	ASM-Switch
111217	22	28	1	Tube Cmplt-Suction
111314	12	27	1	ASM-Pin
111332	10	42	1	Switch-Interlock
111332	20	4	1	Switch-Interlock
111383	9	33	2	Collar W/Set Screw
111498	20	9:2	3	Body-Connector
111642	20	3	1	Barrier-Switch
111926	4	47	1	Decal-Elec System
111960	4	45	1	Decal-PTO Clutch
112564	11	32	2	Lens-Light
112764	2	16	1	Spindle
112765	2	17	1	Spindle
112771	2	24	2	Balljoint-LH Thread
112772	2	11	2	Balljoint-RH Thread
112773	2	22	2	Tube
112775	2	23	2	Nut-Hex Jam
112791	10	31	1	Pulley-Idler

*Not Illustrated

Toro Part Number Index (cont.)

Part No.	Page No.	Ref. No.	Qty.	Description
112823	16	9	2	Bearing-Roller
112824	16	11	2	Spacer
112825	16	5	2	Dust Cap
113010	18	10	1	Hold Down
113023	4	1	1	Bracket-Fender
113107	12	26	1	Clevis
113108	12	1	1	Rod-PTO Housing
113119	20	9:3	1	Cap-Circuit
113193	15	41	1	Sensor-Hydro Oil Temp
113358	19	6	1	Sender-Fuel Level
113372	19	2	1	Gasket-Fuel Sender
113454	9	15	1	ASM-Cam Control
113874	13	13	1	Bracket-Engine
113925	18	1	1	Cable-Battery
113927	21	25	1	Case-Transaxle
113928	4	17	1	Plate-Hoodstand
113932	4	25	1	Stiffener-Panel
113962	4	32	1	Panel-Side
113968	1	8	1	ASM-Hood & Grill
113969	18	9	2	Hook-Retainer
114000	7	4	1	Valve ASM - Hyd
114012	19	1	1	Tank-Fuel
114027	6	10	1	Control-Choke
114052	1	4	1	Wire Harness
114210	18	6	1	Cable-Battery
114215	14	20	1	ASM-Exh Cover Front
114216	14	6	1	ASM-Exh Cover Rear
114263	11	23	2	Spring-Seat
114264	11	7	1	Adjuster-Seat
114265	11	5	1	Slide-Seat
114343	11	18	1	Spring-Gas
114344	11	16	2	Spacer
114345	11	17	1	Bracket-Gas Spring
114628	4	20	1	Bracket-Switch
114632	20	9:4	1	Housing-Connector
114633	20	9:5	11	Contact
114636	14	8	1	Nipple-.375x3
114641	6	12	1	Stop-Choke
114720	18	7	1	Tube-Battery Drain
114763	14	10	1	Nipple-.375x4
114764	14	9	1	Elbow-90 DEG
114767	4	38	1	Clamp
114823	10	22	1	Washer-Curved Spring
114881	12	8	A/R	ASM-PTO Clutch Plate
114888	14	1	6	Screw
114895	10	29	1	Belt-Hydro Drive
115230	9	41	1	Switch-Clutch
115392	6	18	1	Control-Throttle
115411	20	2	1	Bracket-Switch
115620	4	7	1	Cover-Console 5-Gage
115877	18	5	1	Battery
116000	4	24	4	Screw-CARR
116000	5	8	4	Screw-CARR
116302	7	8	1	Arm-Control
116305	7	9	1	Bracket-Control
116309	4	28	1	ASM-Support
116321	9	5	1	Arm-Control
116324	9	6	1	Rod & Balljoint ASM
116397	20	17	3	Relay
116407	9	13	1	Rod End
116445	4	42	1	Decal-Parking Brake
116471	14	5	1	Muffler

*Not Illustrated

Toro Part Number Index (cont.)

Part No.	Page No.	Ref. No.	Qty.	Description
116609	14	14	1	Plate-Engine
116745	1	19	1	Rod-Grill Pivot
116746	1	20	1	Bracket-Grill RH
116747	1	13	1	Bracket-Grill LH
116823	2	12	1	Axle-Front
116971	16	3:2	2	Tire
117191	4	34	1	Bracket-Holder
117257	4	36	1	Tie- Snap In
117267	4	13	1	ASM-Panel
117328	7	12	1	Rod-Lift Control
117329	9	2	1	Rod-Motion Control
117343	4	15	2	Latch-Hood
117344	1	10	2	Handle-Latch
117432	1	9	4	Poprivet
117433	4	14	4	Poprivet
117930	17	17	1	ASM-Latch
118410	4	9	1	Cover-Steering Shaft
118530	14	29	1	Name Plate-Toro Logo
118530	24	19	1	Name Plate-Toro Logo
118560	14	30	1	Decal-Power Plus 20
118660	9	7	1	Guide-Control
118780	4	10	4	Screw
118860	10	6	1	Knob-Parking Brake
119230	4	44	1	Decal-Lower Dash
119340	7	22	1	Cylinder ASM
120400	8	21	1	ASM-Lift Bar
120930	20	9:6	1	Fuse Holder
121100	8	15	1	ASM-Lift Arm
201256	32	21	1	Link-Governor Control
201270	32	15	1	Washer
201327	32	25	1	Screw-Self TAP Flg Hd
518211	5	4	A/R	Bumper-Rubber
519337	19	16	2	Clip
910865	11	3	4	Screw
911423	21	9	4	Bolt-Hex
933135	10	5	1	Pin-Spirol
933198	7	7	1	Pin-Spirol
933198	9	4	1	Pin-Spirol
933274	12	25	1	Pin-Spirol
937089	22	5	1	Key-Woodruff
937099	22	20	1	Key
937108	21	16	2	Woodruff Key
950154	35	6	2	Clamp-Corbin
9000369	4	30	2	Bolt-CARR
9080026	12	14	4	Screw-Lock
9080026	22	2	1	Screw-Lock
9080196	15	8	1	Screw-HH
9080356	22	11	1	Screw-HH
9080376	3	21	2	Screw-HH
9080406	22	14	2	Screw-HH
9104784	20	5	2	Screw
9107834	6	16	2	Screw-Phcr
9107922	6	7	4	Screw-Phcr
9107944	20	8	2	Screw-Phcr
9108074	19	4	5	Screw-Machine
9108372	4	5	12	Screw-Phcr
9108372	5	7	2	Screw-Phcr
9108392	4	4	6	Screw-Phcr
9109482	4	19	2	Screw-Phcr
9109482	10	41	2	Screw-Phcr
9109484	9	42	2	Screw-Phcr
9114584	9	21	1	Screw-HH

*Not Illustrated

Toro Part Number Index (cont.)

Part No.	Page No.	Ref. No.	Qty.	Description
9157324	4	22	2	Nut-Lock
9157324	9	40	2	Nut-Lock
9157324	10	43	2	Nut-Lock
9157324	20	1	2	Nut-Lock
9157404	6	11	4	Nut
9157404	20	12	2	Nut
9202164	3	19	1	Washer
9202254	16	8	2	Washer-Special
9202324	7	23	1	Washer
9202414	10	4	1	Washer-Flat
9202424	2	4	4	Washer-Flat
9202624	3	5	1	Washer-Flat
9202704	4	8	4	Washer-Flat
9266714	1	6	2	Screw-HWHTF
9266714	20	6	1	Screw-HWHTF
9266944	4	18	10	Screw-HH
9266944	5	15	1	Screw-HH
9266944	9	27	1	Screw-HH
9266944	11	9	4	Screw-HH
9266944	20	20	4	Screw-HH
9266974	11	19	4	Screw-HH
9266974	19	8	2	Screw-HH
9321204	7	3	1	Pin-Clevis
9329974	7	20	1	Pin-Clevis
9335044	9	28	1	Hairpin
9335054	8	1	2	Hairpin
9335054	13	21	1	Hairpin
9335054	17	10	1	Hairpin
9335064	12	23	1	Hairpin
9335074	8	16	2	Cotter-Hairpin
9601524	20	13	3	Screw
9791204	17	6	2	Spacer
12-3270	14	4	3	Screw-HH
NN10048	35	9	1	Clamp
NN10082	37	8	8	Lock-Valve Spring
NN10132	31	20	1	Nut P220g
NN10143	28	7	1	Filter-Oil
NN10159	27	13	1	Cap-Indicator Oil Fill
NN10176	31	2	1	Wrapper-Element
NN10187	31	17	1	Tube-Air Intake
NN10190	31	19	1	Gasket
NN10211	35	8	1	Cap-Fuel Fitting
NN10253	30	9	1	Cable-Spark Plug 9"
NN10254	30	9	1	Cable-Spark Plug 18.5"
NN10302	35	4	1	Line-Fuel 7"
NN10306	33	18	1	Hose-Fuel 30"
NN10362	33	4	1	Washer-Flat
NN10370	37	19	2	Screw-HH
NN10373	28	4	2	Screw-HH
NN10375	33	12	4	Screw-HH
NN10379	27	7	4	Screw-HH
NN10390	31	13	1	Screw-Hex Washer Hd
NN10394	29	17	2	Screw-Hex Washer Hd
NN10403	32	12	1	Screw-Self TAP Flg Hd
NN10446	31	6	1	Cover-Air Cleaner
NN10447	31	22	1	Hose
NN10448	27	11	1	Tube-Oil Fill
NN10545	29	25	4	Screw-HH
NN10545	30	12	1	Screw-HH
NN10545	33	15	2	Screw-HH
NN10769	24	17	1	Housing-Blower
NN10773	26	11	1	Crankshaft (220)

*Not Illustrated

Toro Part Number Index (cont.)

Part No.	Page No.	Ref. No.	Qty.	Description
NN10774	31	1	1	Element-Air Cleaner
NN10790	35	3	1	Line-Fuel 12"
NN10821	37	21	1	Cover-Valve
NN10825	29	27	1	Kit-Gearcase
NN10826	29	3	1	Shaft & Arm Governor
NN10830	34	7	1	Plug-Cap
NN10832	24	22	1	Bracket-Governor Adjust
NN10894	28	9	1	Drain-Oil Filter
NN10929	23	12	1	Kit-Mounting Bracket
NN10930	23	9	1	Cap-Starter Solenoid
NN10932	32	13	1	Spring-Governor
38-1420	11	26	1	Switch-Seat
55-3570	19	7	1	ASM-Cap
57-8000	37	59	2	Bearing-Camshaft
57-8010	37	27	1	Gasket-Bearing Plate
57-8020	37	52	1	Bearing-Crankshaft
57-8030	37		1	.010" Undersize
57-8050	37	29	1	Bearing-Crankshaft Rear
57-8060	37		1	.010" Undersize
57-8060	37		1	.010" Undersize
57-8090	27	5	1	Gasket-Base
57-8130	26	12	1	Gear-Crankshaft
57-8140	26	13	1	Washer-Gear
57-8150	25	1	1	Screw-HH
57-8160	37	35	2	Washer-Thrust
57-8170	37	28	A/R	Shim-Crankshaft .005"
57-8180	25	6	1	Gear-Ring
57-8210	26	5	1	Gear-Camshaft
57-8230	26	6	1	Washer-Thrust
57-8280	37	18	2	Gasket-Cover
57-8330	37	38	2	Gasket-Head
57-8410	37	44	4	Bolt-Connecting Rod
57-8420	37	43	2	Rod-Conn STD INC 44 & 47
57-8430	37	43	2	.010" Undersize
57-8440	37	43	2	.020" Undersize
57-8450	37	9	4	Tappet-Valve STD
57-8460	37	58	1	Kit-Gasket
57-8470	37	3	1	Plunger-Bypass Valve
57-8480	37	54	1	Pump-Oil
57-8490	27	4	1	Cup-Intake
57-9080	35	5	1	Pump-Fuel
57-9090	26	1	1	Ring-Retaining
57-9100	32	8	1	Spring-Governor
57-9120	32	9	1	Bushing-Control Arm
57-9120	32	16	1	Bushing-Control Arm
57-9130	26	2	1	Hub-Governor Cup
57-9170	34	9	1	Swivel-Choke Lever
57-9180	34	3	1	Link-Choke
57-9190	32	2	2	Clamp-Cable
57-9190	34	4	1	Clamp-Cable
57-9210	14	21	2	Gasket-Manifold
57-9340	30	8	2	Plug-Spark
57-9360	37		1	.002" Undersize
57-9430	29	12	1	Regulator-Voltage 20 Amp
57-9550	29	21	1	Clamp-Vacuum Port Cap
57-9570	29	5	1	Seal-Oil
57-9580	29	26	1	Seal-Oil
57-9590	37	31	1	Seal-Oil
57-9610	27	12	1	O Ring-Cap
57-9620	33	5	1	O Ring
57-9630	29	7	1	Bearing-Ball Gov Shaft
57-9640	26	4	1	Ball-Governor

*Not Illustrated

Toro Part Number Index (cont.)

Part No.	Page No.	Ref. No.	Qty.	Description
57-9650	29	6	1	Bearing-Governor Shaft
57-9660	26	8	1	Key-Woodruff
57-9660	26	15	1	Key-Woodruff
57-9690	37	25	1	Plug-Welch
57-9700	33	6	1	Clip-Retaining
57-9710	26	14	1	Ring-Retaining
57-9720	37	48	4	Ring-Retaining
57-9730	29	4	1	Clip-Retaining
57-9730	33	9	1	Clip-Retaining
57-9740	37	20	2	Washer-Flat
57-9750	28	3	2	Washer-Flat
57-9750	29	24	5	Washer-Flat
57-9760	37	2	1	Washer-Flat
57-9770	23	3	2	Washer-Flat
57-9770	37	40	18	Washer-Flat
57-9790	37	47	4	Nut
57-9800	37		1	.020" Undersize
59-0010	37		1	.030" Undersize
59-0020	37		1	.002" Undersize
59-0030	37		1	.020" Undersize
59-0040	37		1	.030" Undersize
59-0050	37	36	2	Insert-Valve Seat Intake
59-0080	37		2	.010" Oversize
59-0100	37	46	2	Insert-Valve Seat Exh
59-0110	37		2	.002" Oversize
59-0120	37		2	.005" Oversize
59-0130	37		2	.010" Oversize
59-0140	37		2	.025" Oversize
59-0180	37	39	1	Head-Cylinder RH
59-0250	37	43	2	.030" Undersize
59-0260	37		4	.002" Oversize
59-0280	37	4	1	Spring-Bypass Valve
59-0290	37	51	1	Tube-Oil
59-0360	29	23	1	Tube-Vacuum Port
59-0370	29	22	1	Cap-Vacuum Port
59-0400	26	7	1	Pin-Center
59-0420	29	2	1	Yoke-Governor
59-0430	32	5	1	Spring-Idle Setting
59-0450	26	3	1	Cup-Governor
59-0470	34	1	1	Bracket-Choke Cable
59-0580	24	3	1	Clamp-Wire
59-0590	29	18	2	Terminal-Stator Leads
59-0640	28	5	1	Elbow-Street
59-0720	32	14	1	Pin-Cotter
59-0720	34	10	1	Pin-Cotter
59-0730	37	26	4	Pin-Drive
59-0740	29	9	1	Pin-Dowel
59-0750	37	53	2	Pin Align
59-0790	29	29	1	Stud-Gear Cover
59-0810	25	3	1	Washer-Flat
59-0820	24	16	4	Washer-Flat
59-0820	37	22	1	Washer-Flat
59-0830	24	5	6	Washer-Flat
59-0830	32	4	2	Washer-Flat
59-0830	32	20	1	Washer-Flat
59-0850	34	12	1	Washer-Flat
59-0880	37	32	5	Screw-Cap Flg Hd
59-0900	37	41	18	Screw-HH
59-0910	37	5	1	Screw-HH
59-0950	29	1	2	Screw-Mach Pan Hd
59-0970	24	6	2	Screw TAP Flg Hd
59-0980	24	4	2	Screw TAP Washer Hd

*Not Illustrated

Toro Part Number Index (cont.)

Part No.	Page No.	Ref. No.	Qty.	Description
59-1000	32	26	3	Screw
59-1030	32	6	1	Screw-Tapping HH
59-1050	35	7	2	Screw St Pan Hd
59-1080	24	9	4	Screw-Cap Flg Hd
59-1080	29	11	1	Screw-Cap Flg Hd
59-1100	24	21	2	Screw-Lock Hd
59-1100	32	11	1	Screw-Lock Hd
59-1130	29	28	1	Nut-Hex
59-1180	31	14	1	Capacitor
62-2730	23	13	1	Kit-Bushing
62-2760	23	1	1	Kit-Starter Hardre
62-2770	23	7	1	Kit-Starter Shift Lever
62-7770	6	9	2	Key-Ignition
66-0120	6	8	2	Knob
71-5730	27	8	1	Base-Oil
71-5770	37	37	2	Valve-Intake
71-5780	37	45	2	Spring-Clutch
71-5790	37	6	4	Spring-Valve
71-5800	37	7	4	Washer-Valve Spring
71-5810	37		1	Head-Cylinder LH
71-5830	37	17	4	Cap-Valve
71-5920	25	5	1	Flywheel Incl 6
71-5960	35	2	1	Filter-Fuel
71-5980	33	16	2	Gasket-Manifold
71-5990	30	1	1	Cover-Plunger
71-6000	30	7	1	Coil-Battery Ignition
71-6010	30	13	1	Rotor-Ignition
71-6040	23	2	1	Starter Incl 1-13
71-6060	30	10	1	Clip-Wire
71-6080	24	10	2	Bracket-Lift
71-6140	31	16	1	Grommet-Rubber
71-6170	27	9	1	Seal-Oil
71-6180	37	23	2	Seal-Valve
71-6190	25	7	1	Key-Flywheel
71-6220	24	7	1	Clip-Wire
71-6220	30	11	2	Clip-Wire
71-6220	33	19	1	Clip-Wire
71-6250	37	24	2	Guide-Valve
71-6260	37		2	Guide-Valve
71-6290	37	57	1	Kit-Gasket Complete
71-6310	37	49	2	Pin-Piston
71-6320	26	9	1	Camshaft (220)
71-6340	25	8	6	Spring-Compression
71-6360	29	8	1	Gasket-Mntg
71-6380	29	14	1	Control-Ignition
71-6410	29	15	1	Insulator-Ignition
71-6430	30	5	1	Nut-Hex Flg Hd
71-6440	30	4	1	Nut-Hex Flg Hd
71-6460	30	6	2	Screw-Hex Washer Hd
72-3880	34	2	1	Screw-Cap Flg Hd
72-3890	32	17	1	Screw-HH
72-3890	34	8	1	Screw-HH
72-3900	32	1	1	Screw-Tapping HH
72-3900	34	5	1	Screw-Tapping HH
72-3930	23	8	1	Kit-Starter Solenoid
72-3940	23	6	1	Clutch-Starter
72-3950	23	5	1	Seal-Dust
78-0030	6	6	1	Voltmeter
78-0040	6	2	1	Gauge-Fuel
78-0060	6	1	1	Tachometer
78-1411	3	7	1	Support-Steering
78-1450	3	10	1	Countershaft

*Not Illustrated

Toro Part Number Index (cont.)

Part No.	Page No.	Ref. No.	Qty.	Description
78-1481	3	4	1	Pinion-Spur
78-1490	2	6	1	Shaft
78-1531	3	6	3	Shim-.010
78-1540	4	31	1	Bracket-Control
78-2990	11	13	1	Plate-Seat Pivot
78-5640	7	17	1	ASM-Valve Actuator Bar
78-5711	9	9	1	Bracket-Control
78-6020	10	23	1	ASM-Idler Arm
78-7740	15	25	1	ASM-Brake Pivot Arm
78-8350	4	43	1	Decal-Indicator Lights
78-8500	10	2	1	ASM-Parking Brake Pawl
79-0450	6	19	4	Lamp-Mini
79-2130	6	13	1	Circuit Board-8 Light
79-2660	6	5	1	Gauge-Vacuum
79-3630	20	9	1	Wire Harness & Schem.
79-4020	20	22	1	Plate-Front
79-4890	4	23	1	Panel-Side LH
79-4990	19	19	1	Bracket-Fender Support
79-5020	15	27	1	Tube Cmplt- Flatr To Pump
79-5120	4	29	1	ASM-Hoodstand
79-5130	5	6	1	Cover-Side LH
79-5270	15	13	1	Filter-Oil
79-5700	8	7	1	ASM-Lift Arm
79-5720	8	5	1	Trunnion
79-6330	31	11	1	Housing-Air Cleaner
79-6340	31	12	1	Support-Air Cleaner
79-6360	32	3	1	Bracket-Cable
79-6390	32	23	1	Bracket-Governor Cont
79-6400	32	22	1	Bushing-Governor Cont
79-6420	32	10	1	Adapter-Governor Arm
79-6440	25	4	1	Screen-Air Inlet
79-6460	27	2	1	Bracket-Fill Tube
79-6470	28	1	1	Gasket-Adapter
79-6490	30	14	1	Gasket-Plate
79-6510	31	3	1	Spacer-Stud
79-6520	31	4	1	Spacer-Nylon
79-6580	23	4	2	Screw-Cap
79-6770	4	6	1	Plate-Top Hoodstand
82-0020	37	30	1	Plate-Bearing
82-0500	28	2	1	Adapter-Oil Filter
82-0530	37	12	1	Clamp-Tube
82-0540	37	10	1	Tube-Breather
82-0550	37	15	1	Cap & Valve-Breather
82-0560	37	14	2	Screen-Tube
82-0570	37	13	1	O-Ring-Cap
82-0620	24	18	1	Guard-Stationary
82-0680	28	8	1	Filter-Gasket Oil
82-0850	33	11	1	Gasket-Carb/Manifold
82-1000	29	13	2	Body-Term Conn Kit
82-1070	33	3	1	Fitting-Barbed
82-1080	33	2	2	Clamp-Hose
82-1080	35	1	6	Clamp-Hose .50" Dia
82-1090	33	2	1	Clamp-Hose
82-1120	33	1	1	Hose-Breather
82-1130	27	10	2	Plug-Square Head
82-1310	27	6	4	Washer-Flat
82-1310	37	33	5	Washer-Flat
82-1320	25	2	1	Washer-Flat
82-1340	30	2	2	Washer
82-1340	37	55	2	Washer
82-1350	33	13	6	Washer
82-1360	30	3	2	Screw-HH

*Not Illustrated

Toro Part Number Index (cont.)

Part No.	Page No.	Ref. No.	Qty.	Description
82-1370	32	18	1	Screw-HH
82-1370	37	56	2	Screw-HH
82-1480	37	16	1	Screw-TAP Round Hd
82-1500	29	20	3	Screw-Mach HH
82-1510	28	10	2	Screw-HH
82-1540	24	8	1	Bolt-HH
82-1540	33	17	1	Bolt-HH
82-1550	31	9	2	Screw-Hex Washer Hd
82-1560	27	1	1	Screw
82-1590	24	20	4	Screw-PH Torx
82-1600	24	2	2	Screw-Cap Hex Flg Hd
82-1620	32	19	1	Washer-Lock
82-1660	29	16	2	Washer-Lock
82-1670	31	5	1	Knob
82-1690	31	15	1	Nut-Hex Washer Hd
82-1700	27	3	1	Nut-Speed
82-1800	37	42	2	Piston STD INC 48-49
83-2720	16	2	10	Bolt-Lug
83-2820	10	40	1	Spring-Extension
83-6520	17	16	1	Rod-Lock
86-9280	7	29	1	Tube ASM-Hyd Pressure
88-2790	15	42	1	Decal-Danger
88-3240	3	20	1	Block-Bearing
92-0900	37	1	1	Block-Cylinder (Short)
92-0902	37		2	.010" Oversize
92-0903	37		2	.020" Oversize
92-0904	37		2	.030" Oversize
92-0905	37	50	2	Kit-Ring Piston STD
92-0906	37		2	.005" Oversize
92-0907	37		2	.010" Oversize
92-0908	37		2	.020" Oversize
92-0909	37		2	.030" Oversize
92-0911	26	10	1	Sleeve-Bearing
92-0915	31	10	2	Screw-Mach HH
92-0916	34	6	1	Screw-Shoulder
92-0918	33	14	1	Manifold-Intake (220)
92-0919	33	7	1	Rod-Governor Control
92-0920	24	1	1	Housing-Cylinder Air LH
92-0921	24	12	1	Housing-Cylinder Air RH
92-0922	32	7	1	Arm-Governor Control
92-0967	29	19	1	Stator
92-0995	3	15	1	Shaft
92-5935	23	10	1	Nut
92-8946	4	41	1	Decal-Danger
92-9513	19	20	1	Line-Fuel 47"
92-9826	1	24	1	Decal-Front Hood
92-9838	4	46	1	Decal-Danger
92-9844	6	3	1	Switch-Light
92-9848	22	29	1	Trans-Hydro
93-1613	17	22	1	Latch
93-9806	16	10	2	ASM-Wheel & Tire
93-9814	15	34	1	ASM-Transaxle
94-1802	7	28	1	Tube ASM-Hyd Return
94-1803	14	3	1	Baffle-Deflector
94-1804	20	9:7	9	Pin-Split
94-1806	33		1	Decal-Ident
94-1811	14	7	1	Engine-Onan
94-1834	15	43	1	Decal-Unidrive
94-1839	4	21	1	Sensor-Air Clnr Vacuum
94-1843	33		1	Kit-Repair
94-1843	33	10	1	Kit-Repair
94-1844	33		1	Kit-Repair

*Not Illustrated

Toro Part Number Index (cont.)

Part No.	Page No.	Ref. No.	Qty.	Description
94-1844	33	10	1	Kit-Repair
94-1845	28	6	1	Switch-Pressure
94-1845	28	6	1	Switch-Pressure
94-1846	33		1	Harness-Wire
94-1847	33	10	1	Kit-Carburetor (220)
94-1848	33		1	Jet-Altitude
94-1848	33	10	1	Jet-Altitude
94-3518	11	8	1	Seat V-811
94-3519	3	17	1	Steering Wheel 15"
94-3520	5	17	1	Footrest RH
94-3522	5	9	1	Footrest LH
94-3700	7	13	1	Knob-Lift
94-3701	13	2	1	PTO Clutch Lever
94-3704	12	21	1	Belt Cover-PTO
94-3707	9	32	1	Pedal-Brake
94-3709	1	23	1	Horse Head Logo
94-3709	16	16	4	Horse Head Logo
94-3711	5	1	1	Mat-Foot RH (Hydro)
94-3712	5	2	1	Mat-Foot LH
94-3716-01	2	7	1	Frame
94-3722-01	11	22	1	Fender
94-3723	6	4	1	Hourmeter
94-3725-01	5	16	1	Belt Guard (Twin)
94-3726	12	18	1	Bracket
94-3727	13	1	1	Knob
94-3728	9	3	1	Knob
94-3729	12	28	1	Retainer-Bolt
94-3730	16	4	2	Hubcap 8"
94-3731	16	1	2	Hubcap 12"
94-3735	12	22	2	Nut-Wing
94-3737	14	2	1	Shield-Heat
94-6330	17	29	2	Decal-Attach A Matic
94-6331	11	34	1	Decal-Wheelhorse USA
94-6334	11	36	1	Decal-Rear Fender
94-6335	1	27	1	Decal-Hood LH Top
94-6336	1	25	1	Decal-Hood RH Top
94-6342	4	39	2	Decal-Model 520 Hydro
94-6650	12	8	1	ASM-Plate
94-6652	13	22	1	ASM-Brake
94-6654	9	36	1	Rod
108326-03	15	2	1	Spacer-Pivot
123-1417	37	11	1	Baffle-Breather Tube
140-2794	31	8	1	Cover-Element
150-2550	33	8	1	Spring-Governor Rod
153-0423	34	11	1	Lever-Choke
191-1951	23	11	1	Kit-Starter Brush
237-69	3	16	1	O-Ring
2412-98	19	21	2	Clamp-Hose
281-10	15	16	1	Plug-Pipe
281-10	21	24	2	Plug-Pipe
288-4	14	11	1	Cap-Pipe
302-5	2	13	6	Fitting-Grease
302-5	9	34	1	Fitting-Grease
302-16	3	23	1	Fitting-Grease
321-4	7	11	1	Screw-HH
321-4	9	10	2	Screw-HH
321-4	18	3	2	Screw-HH
321-6	10	39	1	Screw-HH
321-8	11	25	2	Screw-HH
321-9	9	20	1	Screw-H
321-11	7	26	2	Screw
322-1	2	8	1	Screw-HH

*Not Illustrated

Toro Part Number Index (cont.)

Part No.	Page No.	Ref. No.	Qty.	Description
322-1	4	26	2	Screw-HH
322-2	8	13	1	Screw-HH
322-2	19	15	2	Screw-HH
322-3	4	27	8	Screw-HH
322-3	14	23	4	Screw-HH
322-3	15	37	2	Screw-HH
322-3	19	17	4	Screw-HH
322-4	11	10	6	Screw-HH
322-5	4	3	2	Screw-HH
322-5	8	3	1	Screw-HH
323-5	15	33	A/R	Screw-HH
323-6	2	3	2	Screw-HH
323-6	12	19	1	Screw-HH
323-6	13	15	2	Screw-HH
323-7	13	12	1	Screw-HH
323-7	14	12	4	Screw-HH
323-7	15	33	4	Screw-HH
323-8	3	8	A/R	Screw-HH
323-8	10	8	1	Screw-HH
323-8	10	30	1	Screw-HH
323-8	14	19	4	Screw-HH
323-9	3	8	4	Screw-HH
323-9	10	7	1	Screw-HH
323-9	15	29	1	Screw-HH
323-15	22	12	2	Screw-HH
323-23	9	24	1	Screw-HH
323-25	22	4	3	Screw-HH
323-26	22	15	1	Screw HH
323-44	17	1	6	Screw-HH
3217-5	9	14	1	Nut-Hex
3217-5	10	24	1	Nut-Hex
3217-7	14	16	4	Nut-Hex
3218-1	13	9	2	Nut-Jam
3218-3	21	17	4	Nut-HJ
3220-1	9	11	3	Nut-Hex
3220-11	2	20	2	Nut-Hex Jam
3229-25	1	14	4	Screw-CARR
3229-25	13	20	2	Screw-CARR
3230-1	5	12	1	Screw-CARR
3231-25	17	26	3	Screw-CARR
3235-22	15	21	1	Screw-HH Lock
3235-22	19	10	2	Screw-HH Lock
3243-5	21	18	4	Screw-Set
3245-32	9	33:1	2	Screw-Set
3246-2	12	11	2	Screw-HSH Set
3247-4	37	34	2	Screw-HS
3250-31	11	31	4	Screw-Phcr
3253-2	29	10	3	Washer-Lock
3253-3	13	10	2	Washer-Lock
3253-3	18	13	2	Washer-Lock
3253-4	2	9	1	Washer-Lock
3253-4	14	22	4	Washer-Lock
3253-4	15	38	2	Washer-Lock
3253-4	19	14	2	Washer-Lock
3253-5	37	33	5	Washer-Lock
3253-15	6	15	2	Washer-Lock
3253-17	19	5	5	Washer-Lock
3253-21	13	14	2	Washer-Spring Lock
3253-21	14	15	4	Washer-Spring Lock
3253-21	15	32	4	Washer-Spring Lock
3254-1	11	29	4	Washer-Lock
3254-8	3	22	1	Washer-Lock

*Not Illustrated

Toro Part Number Index (cont.)

Part No.	Page No.	Ref. No.	Qty.	Description
3256-4	10	9	2	Washer-Flat
3256-4	15	24	1	Washer-Flat
3256-4	19	9	2	Washer-Flat
3256-21	6	14	2	Washer-Flat
3256-22	1	12	3	Washer-Flat
3256-22	9	19	2	Washer-Flat
3256-22	11	15	2	Washer-Flat
3256-22	13	11	2	Washer-Flat
3256-22	18	4	4	Washer-Flat
3256-23	4	2	8	Washer-Flat
3256-23	7	15	3	Washer-Flat
3256-23	8	20	1	Washer-Flat
3256-23	11	11	4	Washer-Flat
3256-24	9	25	2	Washer-Flat
3256-24	14	18	4	Washer-Flat
3256-24	15	22	2	Washer-Flat
3256-26	3	3	1	Washer-Flat
3256-26	8	2	1	Washer-Flat
3256-26	15	12	1	Washer-Flat
3256-26	17	9	1	Washer-Flat
3256-27	12	24	1	Washer-Flat
3256-62	8	10	2	Washer-Flat
3257-24	15	30	1	Key-Woodruff
3272-1	1	16	2	Pin-Cotter
3272-1	7	2	1	Pin-Cotter
3272-6	15	19	2	Pin-Cotter
3272-7	2	5	4	Pin-Cotter
3272-10	9	37	1	Pin-Cotter
3272-10	13	5	3	Pin-Cotter
3272-11	3	1	1	Pin-Cotter
3272-11	7	21	1	Pin-Cotter
3272-12	16	7	2	Pin-Cotter
3272-21	3	11	1	Pin-Cotter
3272-22	3	18	1	Pin-Cotter
3290-378	1	22	1	Tie-Cable
3290-378	4	37	2	Tie-Cable
3290-479	5	3	17	Fastener-Panel
3296-4	9	39	1	Nut-Lock
3296-27	11	28	4	Nut-Lock
3296-29	4	16	18	Nut-Lock
3296-29	5	11	5	Nut-Lock
3296-29	7	14	2	Nut-Lock
3296-29	8	8	2	Nut-Lock
3296-29	11	4	6	Nut-Lock
3296-29	11	24	4	Nut-Lock
3296-29	19	13	4	Nut-Lock
3296-39	2	1	2	Nut-Lock
3296-39	3	24	4	Nut-Lock
3296-39	8	6	1	Nut-Lock
3296-39	9	31	1	Nut-Lock
3296-39	10	18	1	Nut-Lock
3296-39	13	18	1	Nut-Lock
3296-39	14	17	4	Nut-Lock
3296-39	15	23	1	Nut-Lock
3296-39	17	24	3	Nut-Lock
3296-39	22	7	6	Nut-Lock
3296-42	1	11	4	Nut-Lock
3296-42	7	5	3	Nut-Lock
3296-42	9	12	4	Nut-Lock
3296-42	11	14	2	Nut-Lock
3296-42	18	12	2	Nut-Lock
3296-42	20	10	3	Nut-Lock

*Not Illustrated

Toro Part Number Index (cont.)

Part No.	Page No.	Ref. No.	Qty.	Description
3296-45	15	11	1	Nut
32103-22	18	11	2	Nut-Wing
32115-5	4	11	12	Nut-Retainer
32120-47	8	18	1	Ring-Retaining
32120-47	9	23	3	Ring-Retaining
32120-47	10	19	1	Ring-Retaining
32120-62	12	4	1	Ring
32120-64	22	10	1	Ring-Retaining
32120-72	12	3	2	Ring-Retaining
32121-94	9	8	1	Pin-Spirol
32121-111	3	14	1	Pin-Spiral
32128-33	4	12	2	Nut-Hex Flange
32128-40	12	17	1	Nut-Lock
32136-3	3	2	1	Nut-Shh
32136-5	16	6	2	Nut-Slotted
32146-17	10	26	1	Nut-Hex Lock
32151-11	13	3	1	Ring-Grip
32151-29	2	21	2	Ring-Ext Snap
32151-91	8	11	2	Ring-Retaining

