



Count on it.

Parts Catalog

21in Heavy-Duty

Recycler®/Rear Bagger Lawn Mower

Model No. 22198—Serial No. 31000001 and Up

Ordering Replacement Parts

To order replacement parts, please supply the part number, the quantity, and the description of each part desired.

Understanding Reference Numbers

Each identified part in an illustration has a reference number. The reference number for a part also appears in the parts list, along with other information about the part.

This catalog uses two special reference number formats, one to indicate parts in a service assembly and another to indicate the quantity of a given part in an illustration.

Service Assembly Reference Numbers

Parts in service assemblies have reference numbers in the form a:b. The a represents the reference number of the entire service assembly and the b represents a sequential number unique to each part within the service assembly.

For example, a wheel assembly might be identified by reference number 6, the tire by 6:1, the valve by 6:2, and the wheel by 6:3. When you order the assembly identified by reference number 6, you receive all parts identified by reference numbers 6:1, 6:2, and 6:3. However, you may also order any part individually. Reference numbers of this type appear in illustration and in parts lists.

Reference Numbers Indicating Quantity

In an illustration, if a reference number indicates more than one part, the reference number has the form nX y. The n represents the quantity of the part, the X is the multiplication symbol, and the y represents the reference number.

For example, in an illustration, the reference number 2X 37 means that two of the parts identified by reference number 37 are indicated.

List of Abbreviations

AR: as required

ASM: assembly

BBC: blade brake control

BHTF: button head thread forming

CARR: carriage

CCW: counter clockwise

CW: clockwise

DEG: degrees

DPA: Dual Point Adjustment

ECM: electronic control module

EXT: external

FH: flat head

GA: gauge

HD: heavy-duty

HF: hex flange

HH: hex head

HHF: hex head flange

HHFTF: hex head flange thread forming

HJ: hex jam

HLH: hex lag head

HOC: height-of-cut

HSBH: hex socket button head

HSFH: hex socket flat head

HSH: hex socket head

HWH: hex washer head

HWTF: hex washer head thread forming

HYD: hydraulic

LH: left hand

LP: Liquid Propane

NI: nylon insert

NPTF: national pipe thread fine

PFH: phillips flat head

PPH: phillips pan head

PPHTF: phillips pan head thread forming

PRH: phillips round head

PTH: phillips truss head

PTO: power-take-off

RH: right hand

ROPS: roll-over protection system

RRB: rear roller brush

SFH: slotted fillister head

SHH: slotted hex head

SHWH: slotted hex washer head

SPH: slotted pan head

SQH: square head

SRH: slotted round head

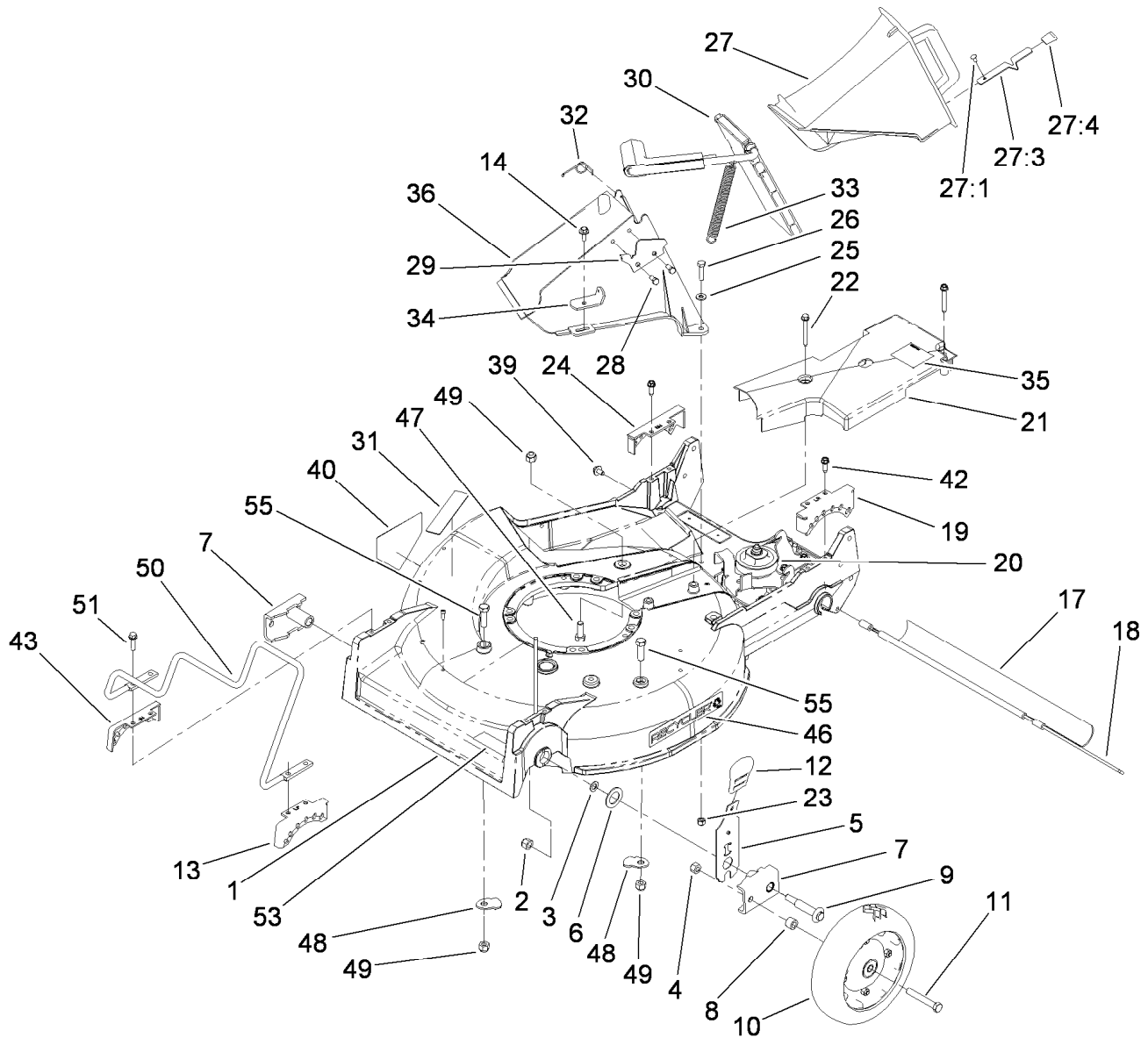
STD: standard

TAP: self tapping

TTH: torx truss head

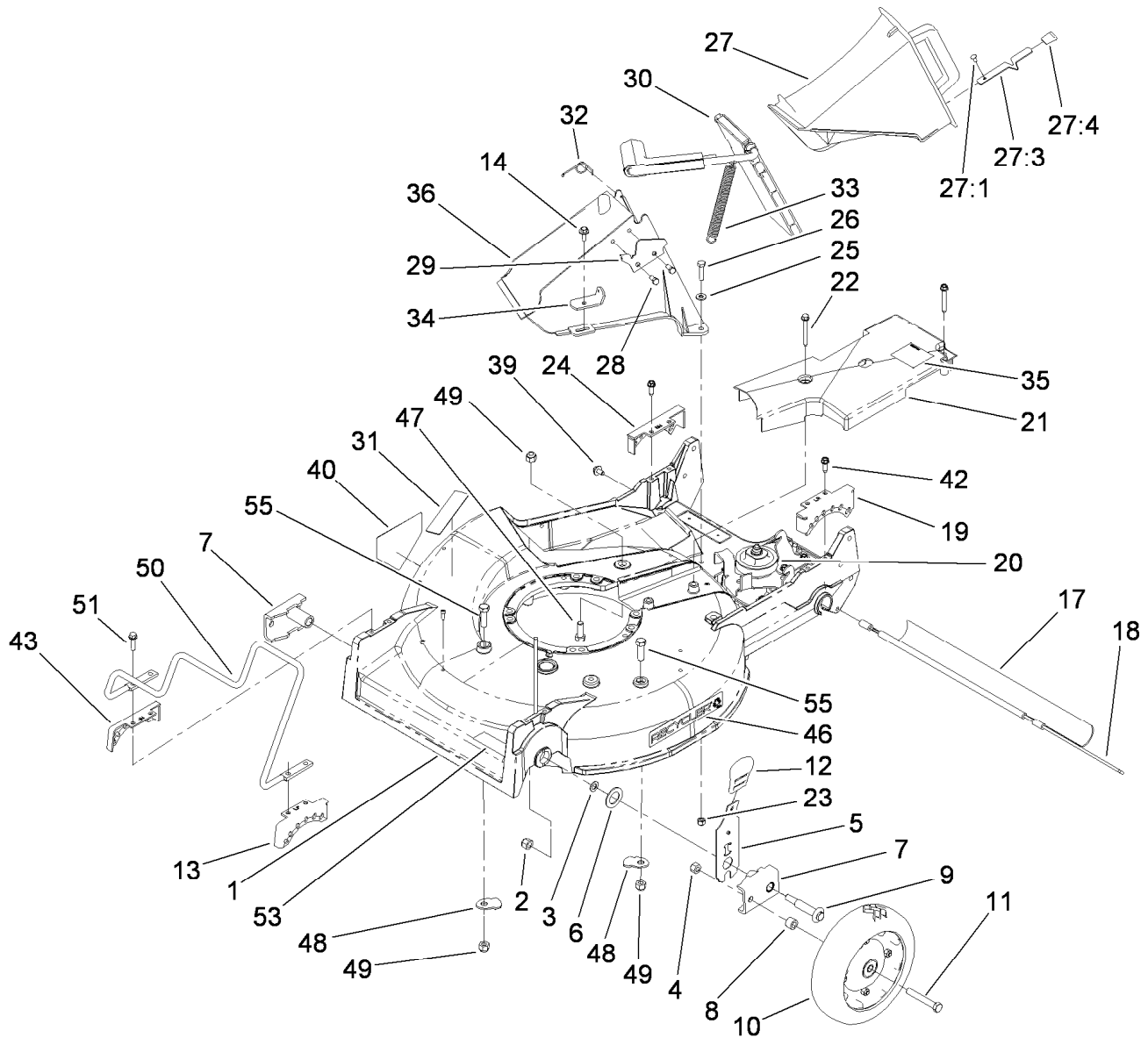
Contents

Housing, Chute and Wheel Assembly.....	4
Housing Assembly No. 98-7146	6
Front Wheel and Tire Assembly No. 100-2870	7
Gear Case Assembly No. 74-1860	8
Engine and Blade Assembly.....	9
Fuel Tank Assembly.....	11
Handle Assembly	12
Control Panel Assembly	13
Gear Case and Axle Assembly	14
Rear Wheel Assembly No. 100-2860	15
Grass Bag Assembly No. 106-0975	16



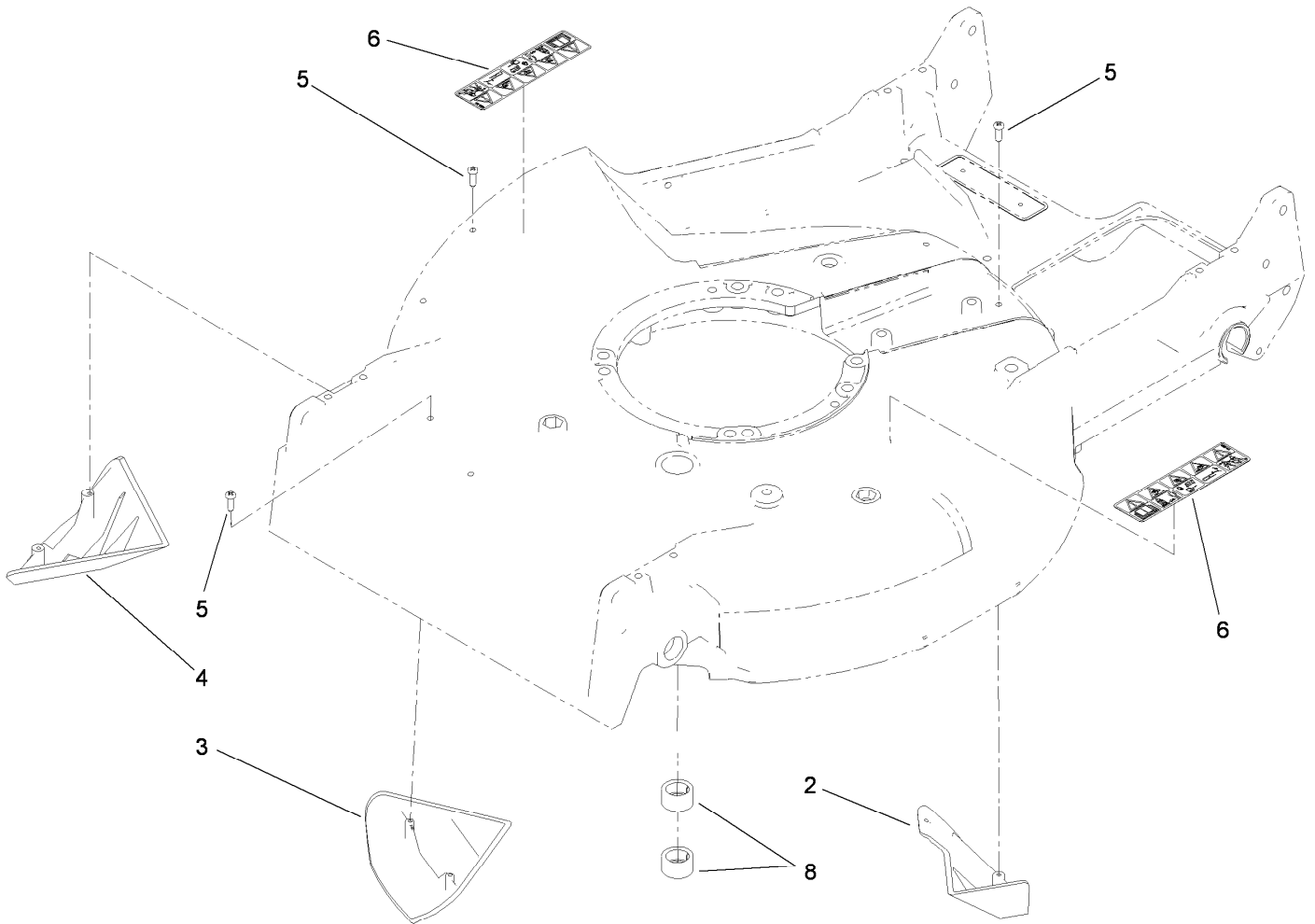
Housing, Chute and Wheel Assembly

Ref.	Part Number	Qty.	Description	Ref.	Part Number	Qty.	Description
1	98-7146	1	Housing	24	49-8750	1	Quadrant-Rear, RH
2	3296-6	2	Nut-Lock	25	3256-22	2	Washer-Flat
3	40-1940	2	Washer	26	321-8	2	Screw-HH
4	32152-2	2	Nut-Lock, Cone	27	77-0500	1	Discharge Plug ASM
5	119-2323	2	Front Spring Arm ASM	27:1	3295-35	1	Rivet-Head, Flat
6	257-3	2	Washer-Thrust	27:3	76-4640	1	Latch-Plug, Discharge
7	61-8300	2	Arm-Pivot, Front	27:4	76-4650	1	Grip-Latch
8	52-2480	2	Spacer-Wheel	28	46-8090	2	Screw-Plastite
9	114-3468	2	Screw-Shoulder	29	93-3154	1	Latch-Plate
10	100-2870	2	Wheel And Tire ASM	30	93-7351	1	Discharge Door ASM
11	323-12	2	Screw-HH	31	117-2718	1	Decal-Arrester, Spark
12	110-0549	2	Knob-HOC	32	80-3770	1	Retainer-Door
13	49-8760	1	Quadrant-Front, LH	33	76-4660	1	Spring-Door
14	46-6811	1	Screw-HWH	34	71-9350	1	Bracket-Spring
17	112-9989	1	Shield-Trailing	35	52-2620	1	Label-Grease
18	33-3208	1	Rod-Shield	36	82-9152	1	Tunnel-Discharge
19	49-8740	1	Quadrant-Rear, LH	39	46-6810	1	Screw And Washer ASM
20	74-1860	1	Gear Case ASM	40	94-8072	1	Decal-Danger
21	74-1770	1	Cover-Belt	42	49-2040	4	Screw-HWHTF
22	117-5248	2	Screw-HWH, Thrd Form	43	49-8770	1	Quadrant-Front, RH
23	3296-42	2	Nut-Lock, NI	46	106-0689	1	Decal



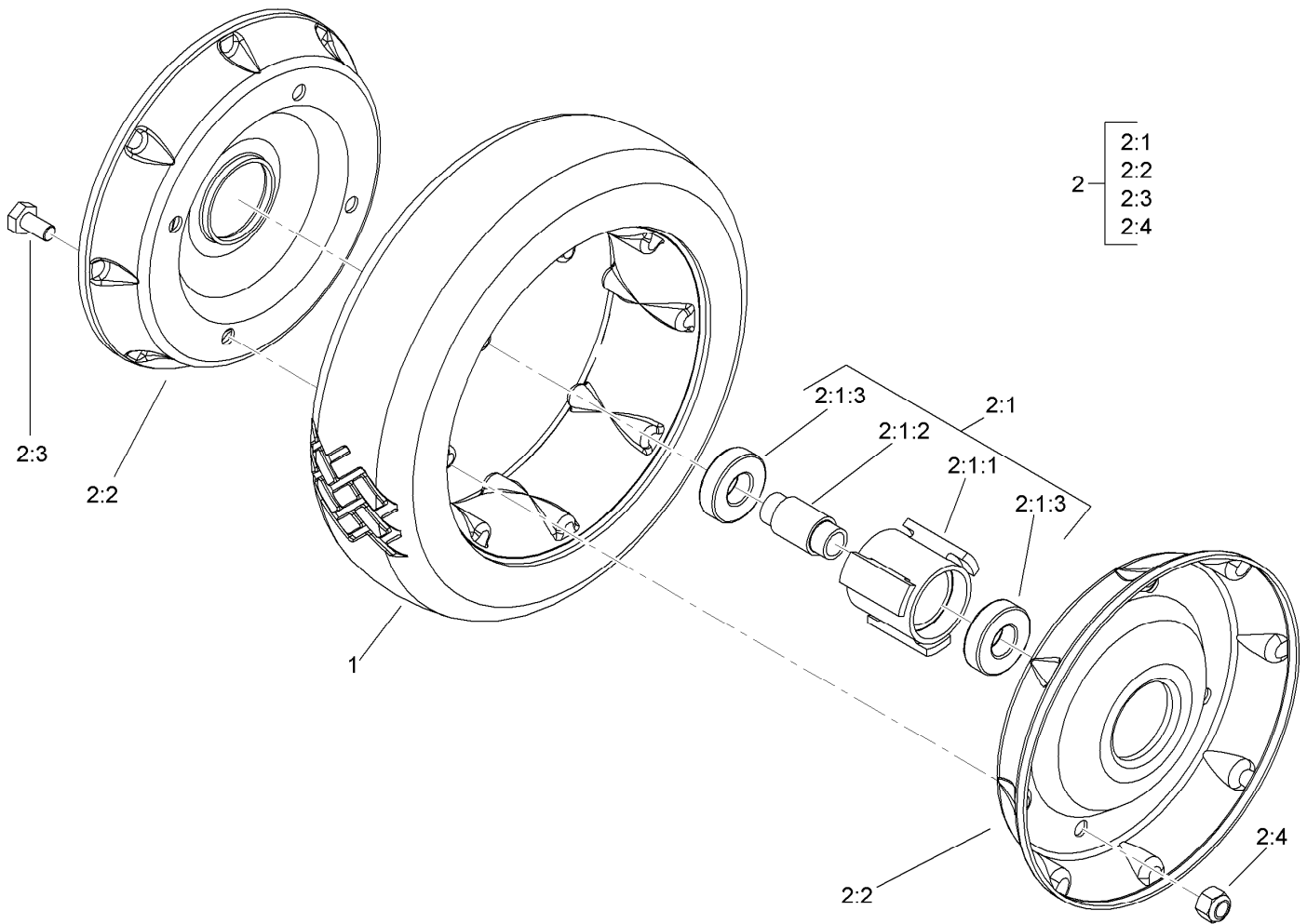
Housing, Chute and Wheel Assembly (continued)

<i>Ref.</i>	<i>Part Number</i>	<i>Qty.</i>	<i>Description</i>	<i>Ref.</i>	<i>Part Number</i>	<i>Qty.</i>	<i>Description</i>
47	323-6	1	Screw-HH	51	32144-86	4	Screw-HWHTF
48	84-8930	2	Shield-Retainer	53	68-7410	1	Decal-Blade
49	3296-39	3	Nut-Lock, NI	55	323-7	2	Screw-HH
50	109-7638	1	Guard-Engine				



Housing Assembly No. 98-7146

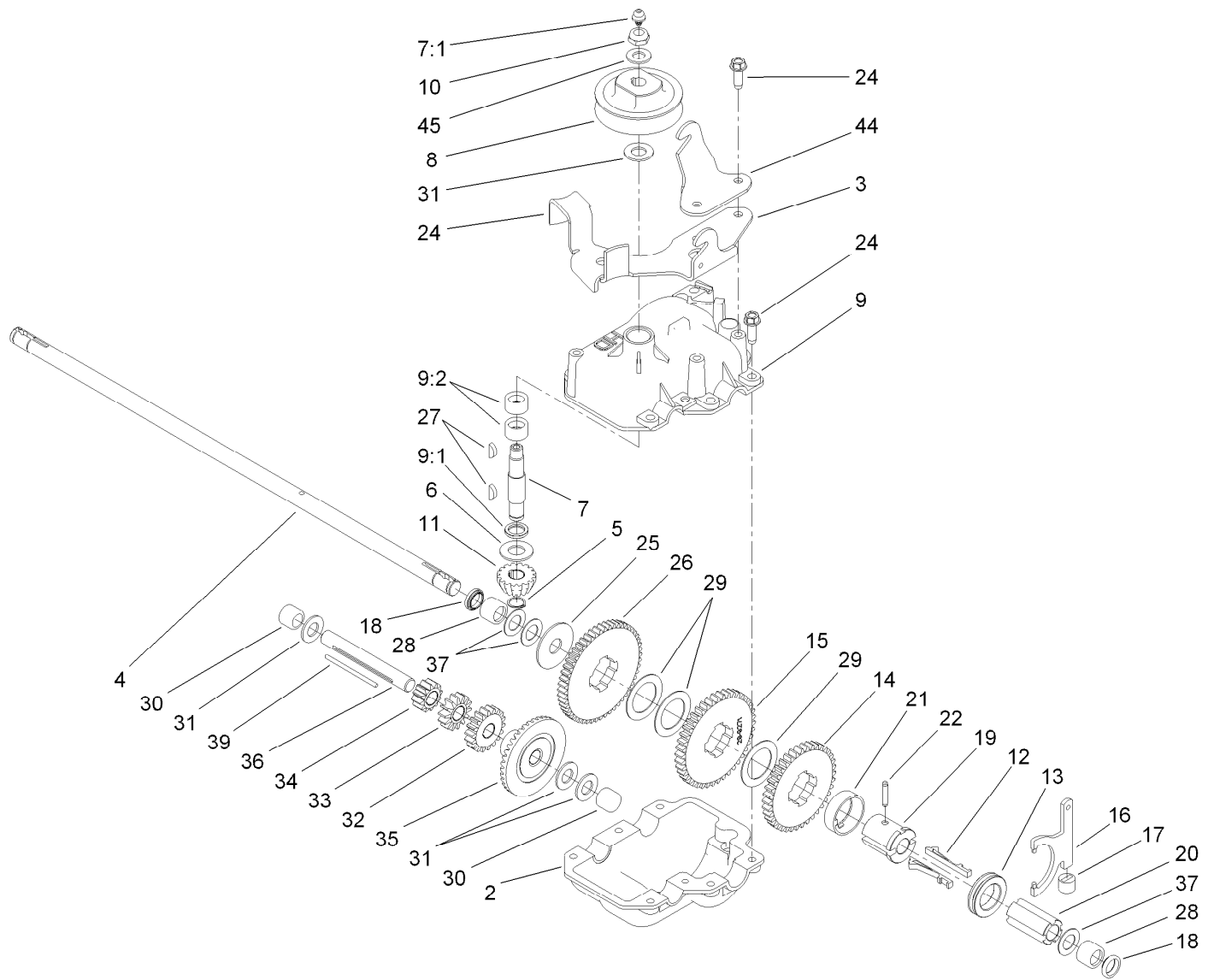
<i>Ref.</i>	<i>Part Number</i>	<i>Qty.</i>	<i>Description</i>
2	92-1750	1	Kicker-Rear
3	92-1720	1	Kicker-Front
4	92-1730	1	Kicker-RH
5	32144-111	6	Screw-PPH
6	110-4978	2	Decal-Danger
8	68-9780	2	Bearing



Front Wheel and Tire Assembly No. 100-2870

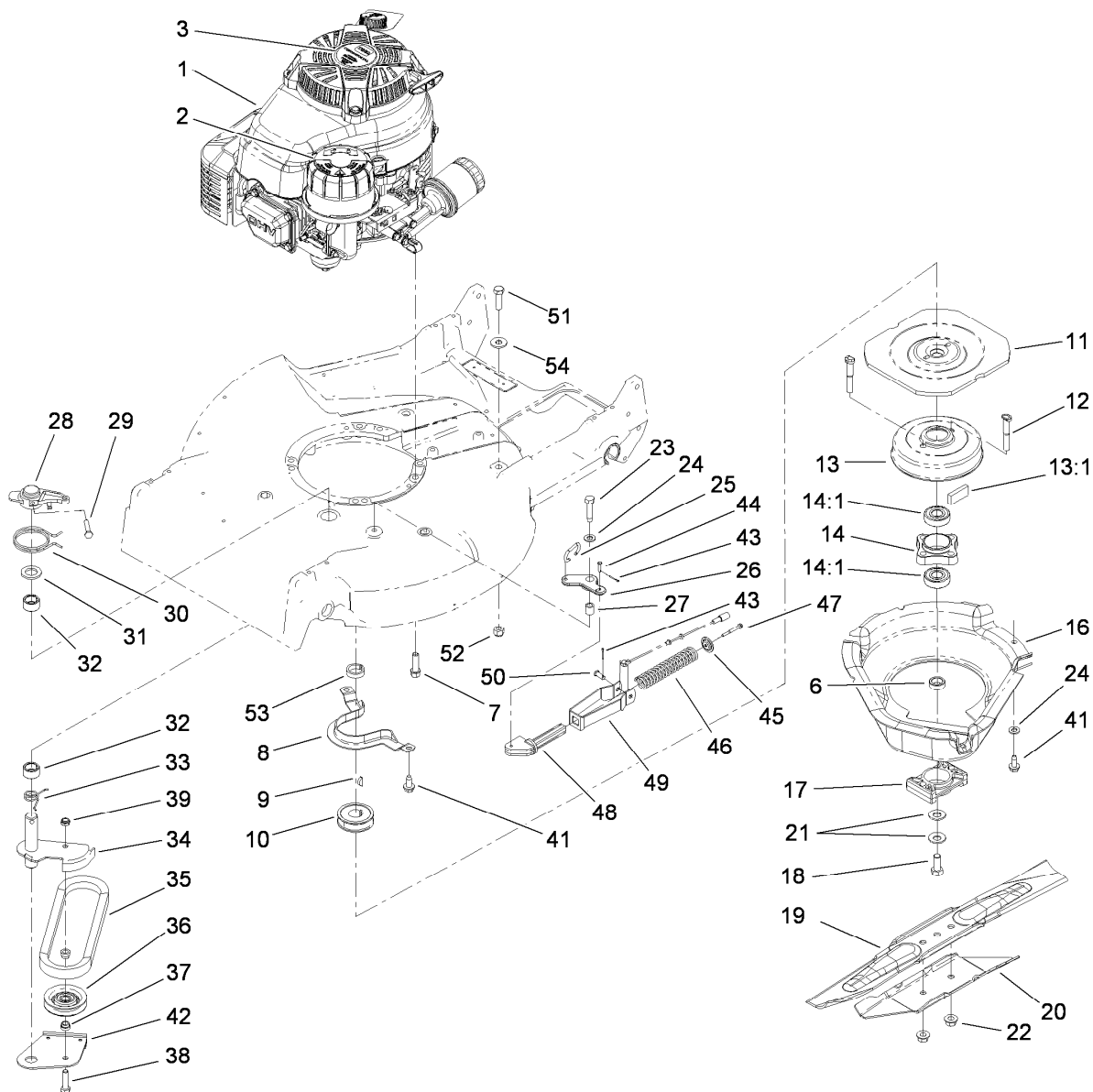
<i>Ref.</i>	<i>Part Number</i>	<i>Qty.</i>	<i>Description</i>
1	53-7740	1	Tire
2		1	Wheel ASM ●
2:1		1	Hub And Bearing ASM ●
2:1:1	52-2410	1	Hub-Bearing
2:1:2	52-2440	1	Spacer-Bearing
2:1:3	52-2450	2	Bearing-Wheel
2:2	53-7780-06	2	Plate-Wheel, Half
2:3	321-2	4	Screw-HH
2:4	3296-42	4	Nut-Lock, NI

● Not serviced separately



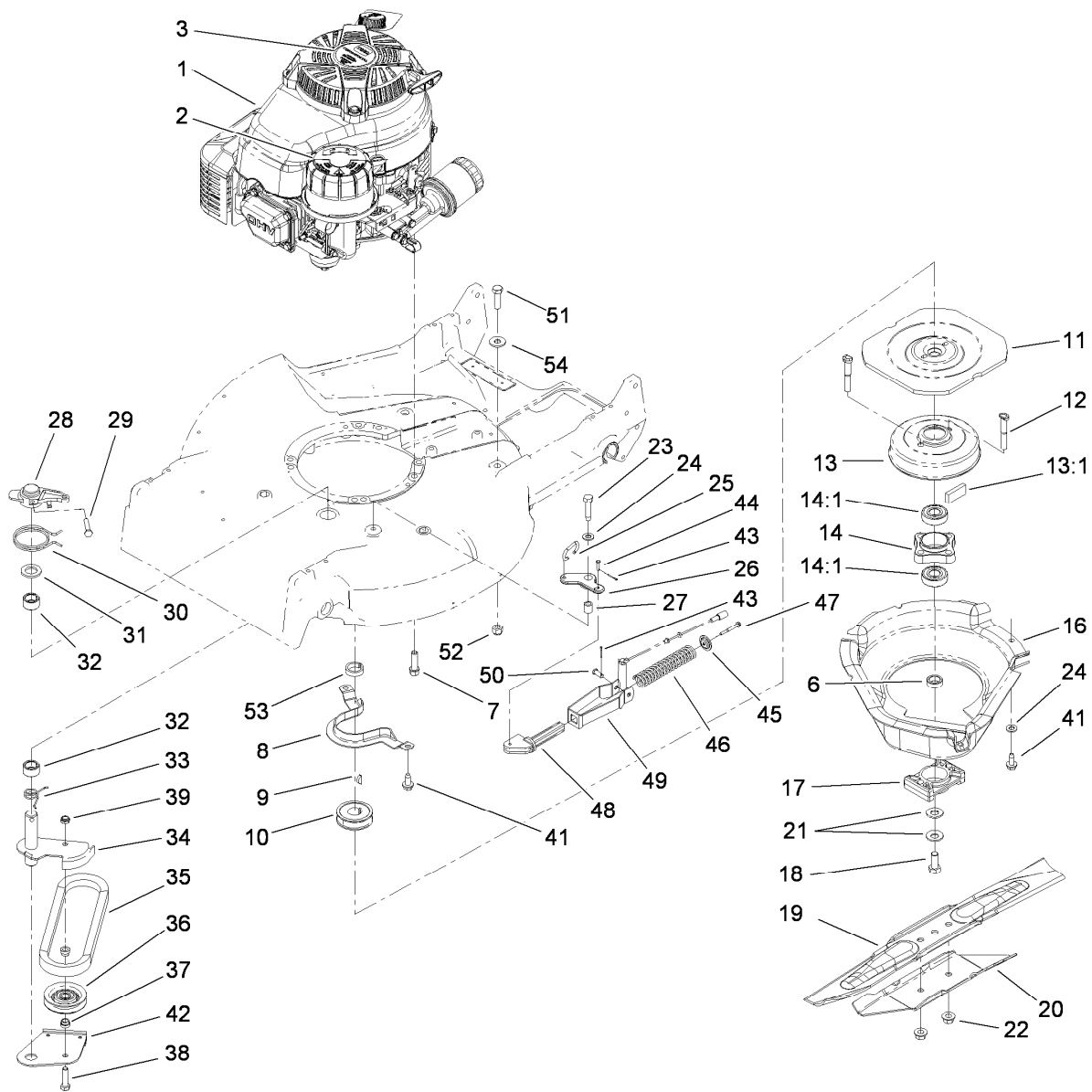
Gear Case Assembly No. 74-1860

Ref.	Part Number	Qty.	Description	Ref.	Part Number	Qty.	Description
2	74-1920	1	Case-Gear, Lower	20	39-6720	1	Sleeve
3	49-8461-03	1	Bracket-Guide, Belt	21	55-8020	1	Retainer-Key
4	74-1890	1	Shaft-Output	22	3285-19	1	Pin-Groove
5	32151-57	1	Ring-Retaining	24	49-2040	8	Screw-HWHTF
6	47-2910	1	Washer-Thrust	25	29-9690	1	Washer
7	13-5149	1	Input Shaft ASM	26	46-3560	1	Gear
7:1	302-63	1	Zerk	27	3257-1	2	Key-Woodruff
8	39-6740	1	Pulley	28	117-3500	2	Bearing-Caged Needle Roller
9	13-9739	1	Upper Gearcase ASM	29	36-4770	3	Washer
9:1	47-7260	1	Seal	30	252-103	2	Bearing-Closed
9:2	47-7270	2	Bearing	31	36-4792	4	Washer-Thrust
10	3296-5	1	Nut-Lock	32	39-6650	1	Gear-18T
11	39-6660	1	Pinion-Bevel	33	46-3550	1	Gear-14T
12	29-9330	2	Key-Shift	34	46-3540	1	Gear-12T
13	29-9340	1	Collar-Shift	35	74-1760	1	Gear-Bevel
14	42-4740	1	Gear-38T	36	53-7950	1	Shaft-Intermediate
15	29-9271	1	Gear-42T	37	36-4780	3	Washer-Plain
16	60-8870	1	Yoke-Shift	39	39-7842	1	Key
17	29-9570	1	Bushing-Yoke	44	74-1750-03	1	Bracket-Engage, Traction
18	47-6730	2	Seal-Oil	45	3256-45	1	Washer-Flat
19	55-8010	1	Sleeve-Gear				



Engine and Blade Assembly

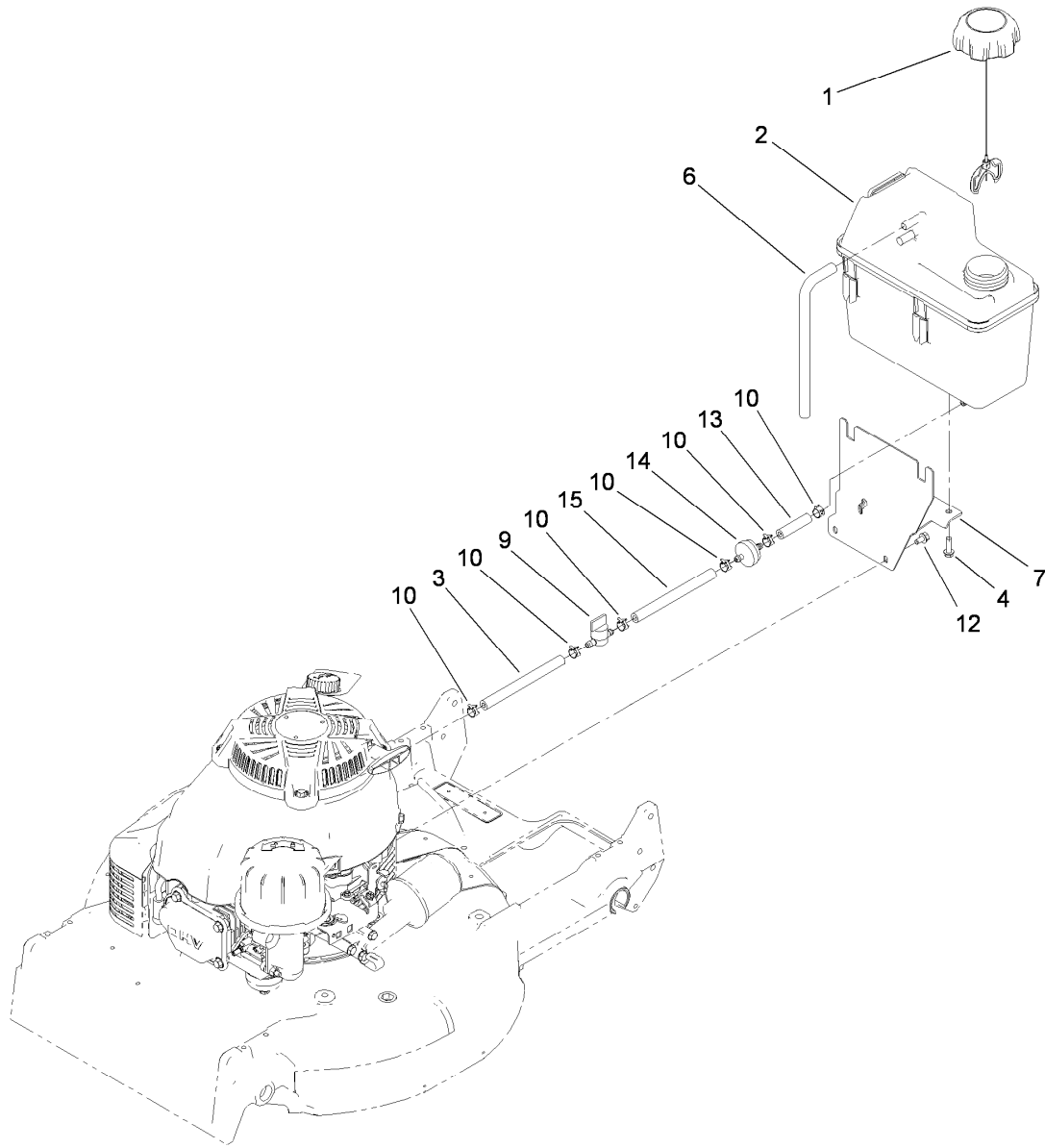
Ref.	Part Number	Qty.	Description	Ref.	Part Number	Qty.	Description
1	117-5220	1	Engine-Kawasaki, Fj180V-Am07-M	22	54-9190	2	Nut-Lock
2	114-3415	1	Decal-Air Cleaner	23	32104-107	1	Screw-HH
3	112-9967	1	Decal	24	3256-23	3	Washer-Flat
6	107-4058	1	Spacer-Shaft, Output	25	49-2810	1	Link-Control
7	95-1727	4	Screw-Taptite	26	49-7960	1	Bellcrank
8	66-0570-03	1	Bracket-Guide, Belt	27	49-7950	1	Sleeve-Bellcrank
9	3257-17	1	Key-Woodruff	28	49-2820	1	Lever
10	56-6180	1	Pulley-Driver	29	32104-96	1	Screw-HH
11	56-6160-03	1	Flywheel-BBC	30	49-7970	1	Spring-Torsion
12	42-3190	2	Bolt-Blade	31	70-1160	1	Washer
13	94-9431	1	Brake Drum ASM	32	68-9780	2	Bearing
13:1	52-3480	2	Dampener-Vibration	33	85-6880	1	Spring-Torsion
14	42-6890	1	Hub ASM	34	84-9130	1	Arm-Idler
14:1	100-1048	2	Bearing-Ball	35	42-0884	1	V-Belt
16	46-5693	1	Shield	36	117-5299	1	Pulley-Idler
17	107-4275	1	Spacer-Blade	37	46-5631	2	Spacer-Pulley, Idler
18	3212-4	1	Screw-HH	38	322-6	1	Screw-HH
19	91-2256-03	1	Blade-21 Inch	39	3296-47	1	Nut-Lock, NI
20	91-2255-03	1	Stiffener-Blade	41	32144-70	3	Screw-HWHTF
21	1-603610	2	Washer-Spring	42	84-9180	1	Brake Plate ASM
				43	3272-1	2	Pin-Cotter



Engine and Blade Assembly (continued)

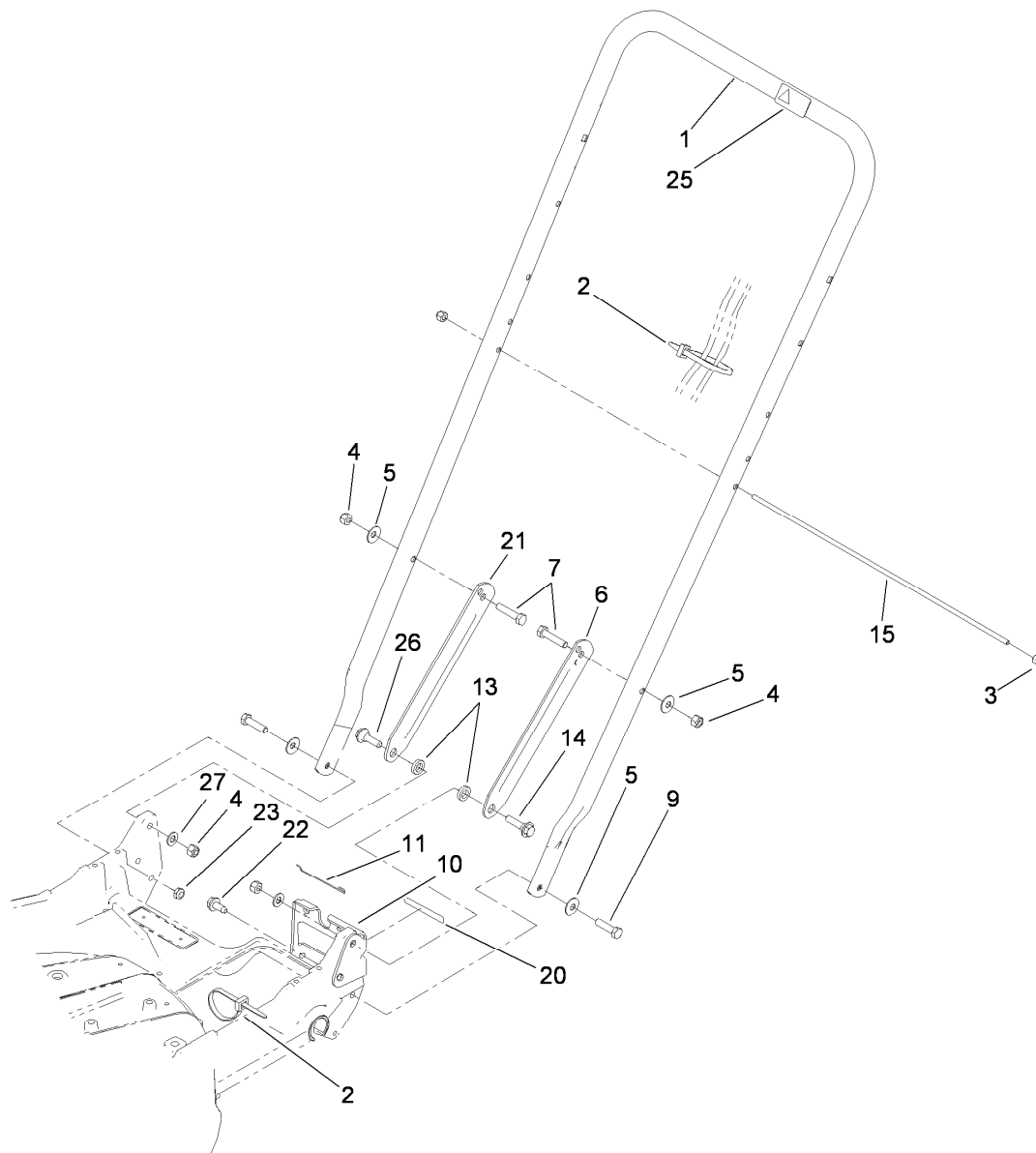
<i>Ref.</i>	<i>Part Number</i>	<i>Qty.</i>	<i>Description</i>
44	84-9050	1	Pin-Spring
45	65-5280	1	Retainer-Spring
46	84-9100	1	Spring
47	46-7040	1	Screw-HWHTF
48	106-0842	1	Guide-Spring
49	107-4087-03	1	Bracket-Spring

<i>Ref.</i>	<i>Part Number</i>	<i>Qty.</i>	<i>Description</i>
50	84-9040	1	Pin-Cable
51	323-7	1	Screw-HH
52	3296-39	1	Nut-Lock, NI
53	110-2142	1	Spacer-Pulley
54	80-6990	1	Washer-Hardened



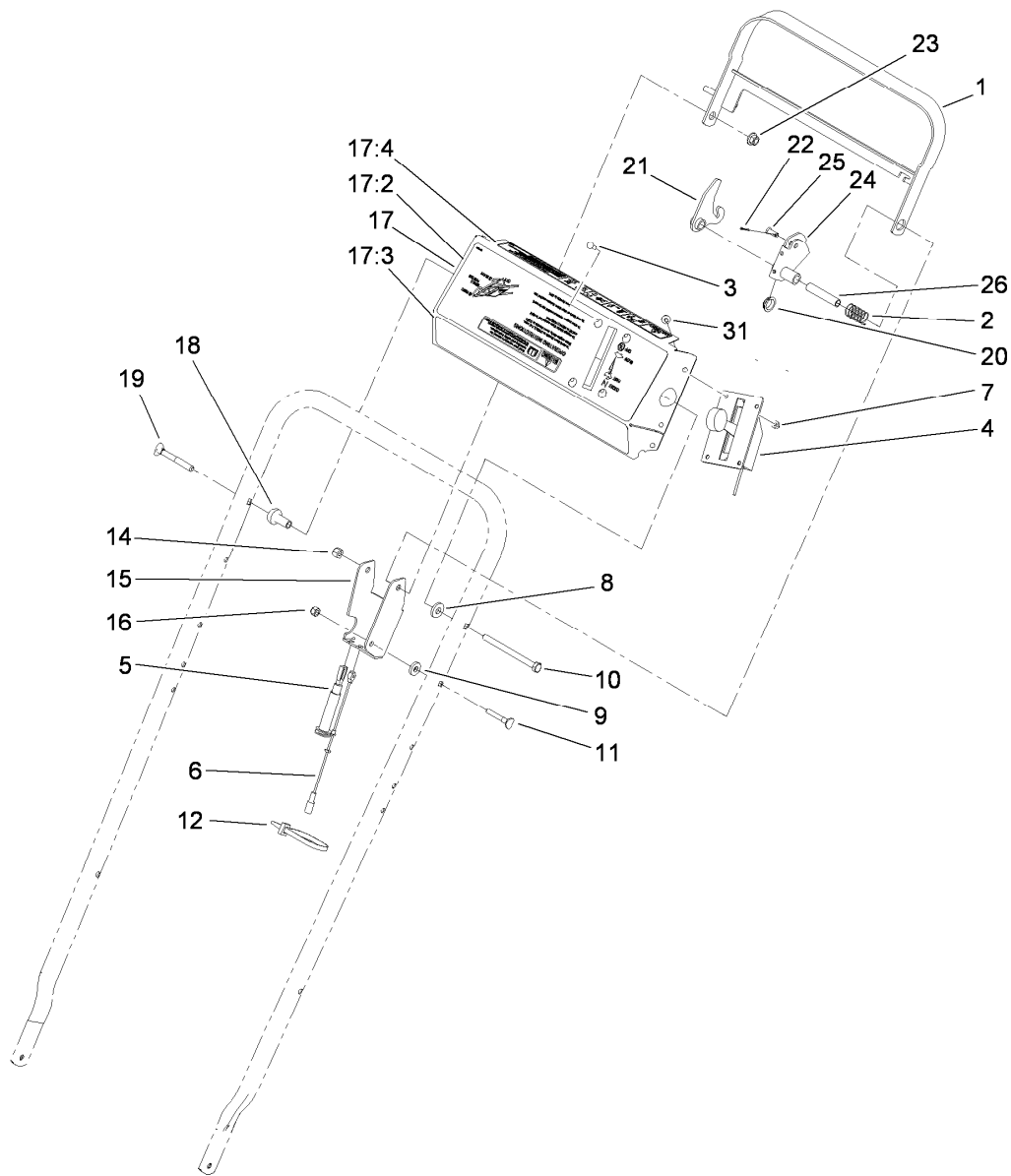
Fuel Tank Assembly

<i>Ref.</i>	<i>Part Number</i>	<i>Qty.</i>	<i>Description</i>
1	109-6776	1	Cap-Ratchet, Tethered
2	114-0280	1	Tank-Fuel
3	109-0300	1	Hose-Fuel
4	46-8091	2	Screw-HWH
6	115-0962	1	Hose-Vent, Canister
7	115-0954-03	1	Tank Mount ASM
9	1-603770	1	Valve-Fuel
10	2412-98	6	Clamp
12	104-2628	3	Screw-HWH
13	99-9415	1	Hose-Fuel
14	56-6360	1	Filter-Fuel
15	109-0650	1	Hose-Fuel



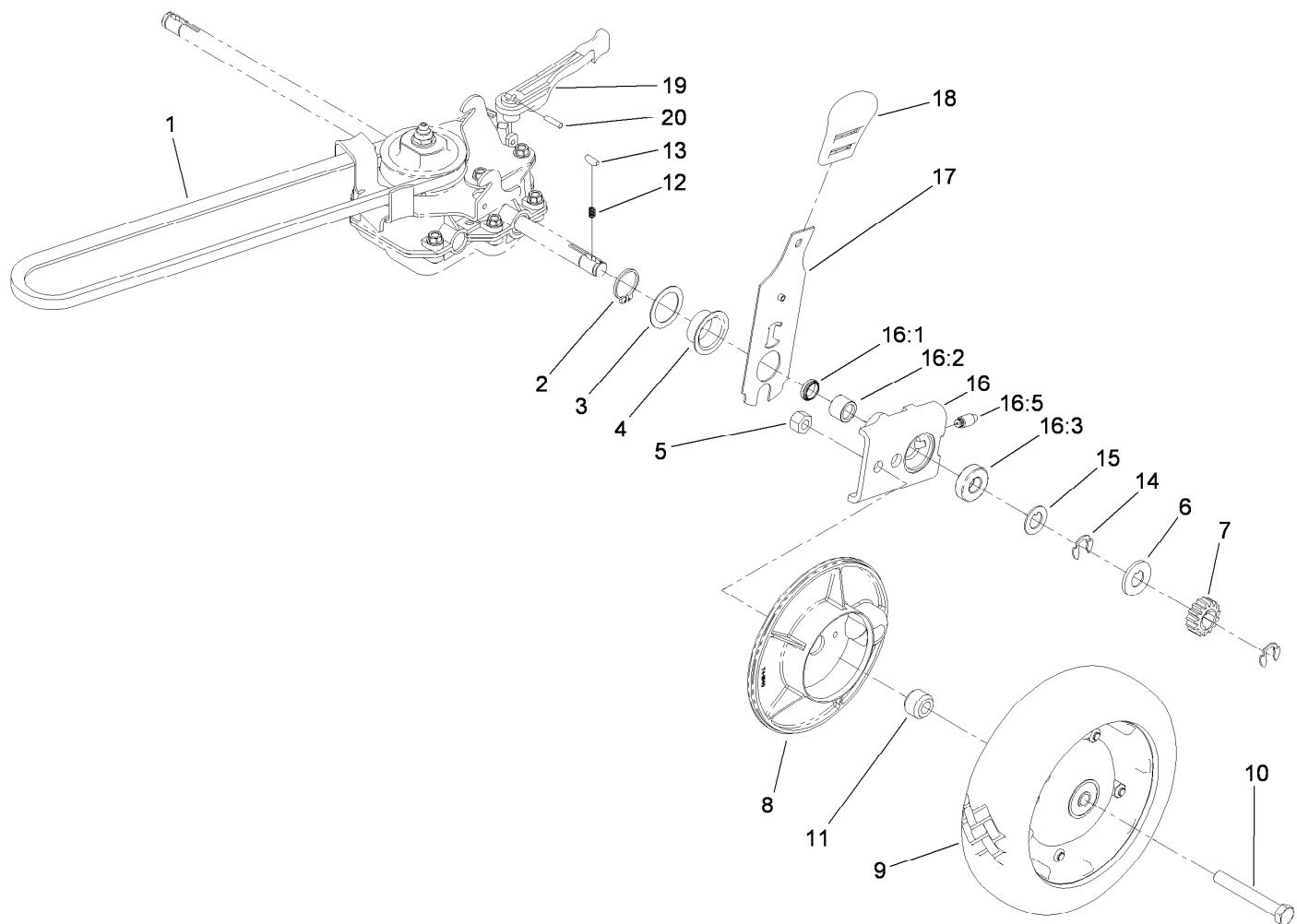
Handle Assembly

<i>Ref.</i>	<i>Part Number</i>	<i>Qty.</i>	<i>Description</i>	<i>Ref.</i>	<i>Part Number</i>	<i>Qty.</i>	<i>Description</i>
1	98-2385-03	1	Handle	13	3-3287	2	Spacer-Latch, Handle
2	3290-378	2	Cable Tie	14	27-7210	1	Screw-Shoulder
3	32111-7	2	Nut-Cap	15	48-2810	1	Rod-Support, Bag
4	3296-29	4	Nut-Lock, NI	20	74-1970	1	Decal-Position, Gear
5	3290-456	4	Washer-Belleville	21	100-3297-03	1	Latch-Handle, RH
6	100-3298-03	1	Latch-Handle, LH	22	32144-70	1	Screw-HWHTF
7	322-7	2	Screw-HH	23	3296-47	2	Nut-Lock, NI
9	322-6	2	Screw-HH	25	98-4387	1	Decal-Protection, Ear
10	74-1741	1	Bracket-Adjustment, Traction	26	27-7211	1	Screw-Shoulder
11	46-7030	1	Retainer-Cable	27	3256-23	2	Washer-Flat



Control Panel Assembly

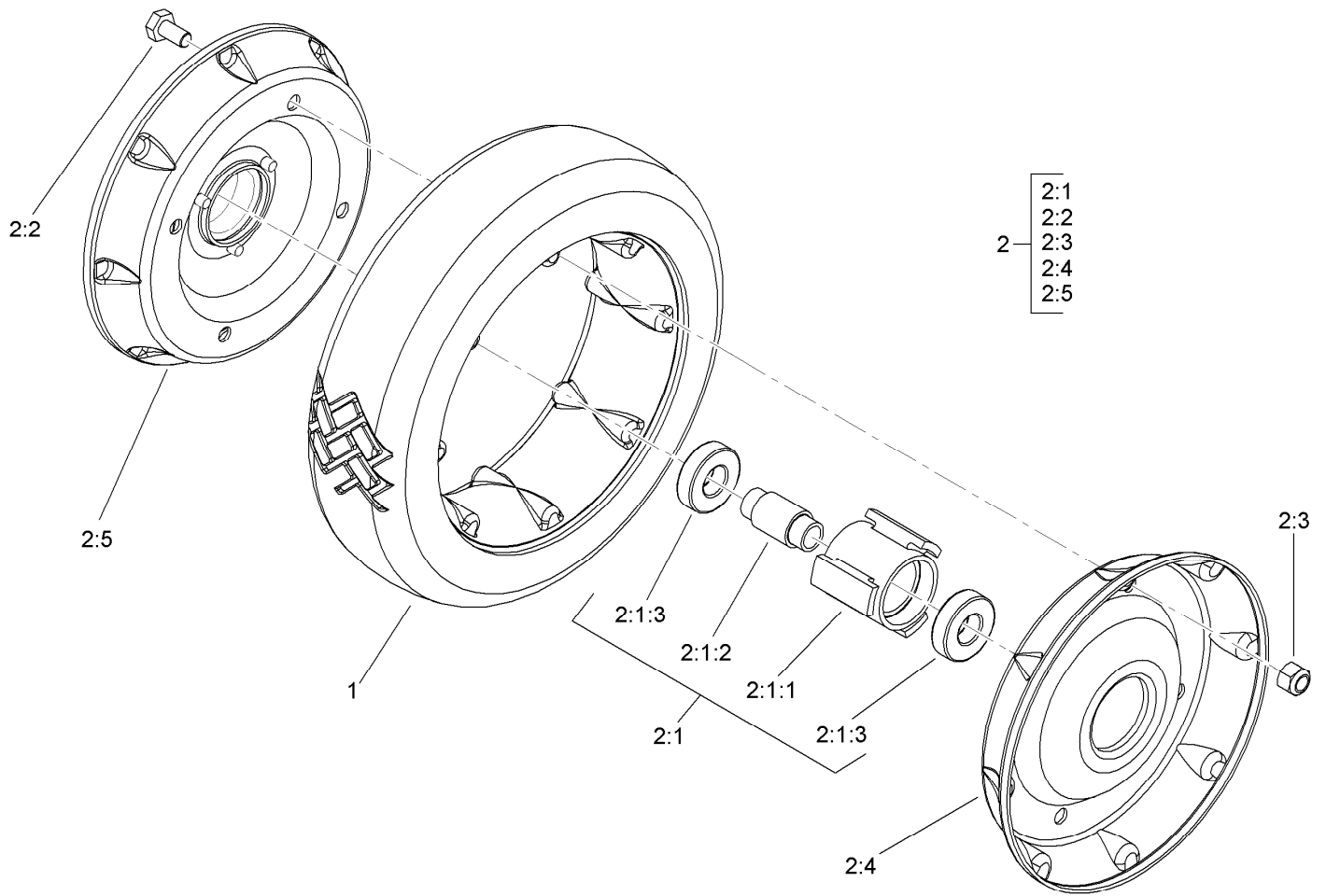
<i>Ref.</i>	<i>Part Number</i>	<i>Qty.</i>	<i>Description</i>	<i>Ref.</i>	<i>Part Number</i>	<i>Qty.</i>	<i>Description</i>
1	84-8940-03	1	Bar-Control	17	14-7709	1	Panel ASM
2	85-6750	1	Spring-Control	17:2	107-4098	1	Decal-Panel
3	3250-12	4	Screw-PPH	17:3	106-0771	1	Decal-Panel
4	117-3543	1	Control-Throttle	17:4	112-8736	1	Decal-Danger Panel
5	84-9120	1	Cable-Traction	18	49-1631	1	Spacer-Support
6	84-9110	1	Cable-Clutch	19	17-9427	1	Screw
7	3296-2	4	Nut-Lock, NI	20	86-9320	1	Bushing-Flange
8	71-9310	1	Spacer	21	84-9000	1	Lever-Traction
9	71-9320	1	Spacer	22	3272-1	1	Pin-Cotter
10	322-19	1	Screw-HH	23	3296-58	1	Nut-Lock, NI
11	46-6430	1	Screw-Handle	24	84-8990	1	Lever-BBC
12	3290-378	1	Cable Tie	25	84-9040	1	Pin-Cable
14	3296-29	1	Nut-Lock, NI	26	84-9030	1	Spacer-Bracket, Control
15	92-1778-03	1	Bracket-Control	31	32104-76	6	Screw
16	3296-42	1	Nut-Lock, NI				



Gear Case and Axle Assembly

<i>Ref.</i>	<i>Part Number</i>	<i>Qty.</i>	<i>Description</i>	<i>Ref.</i>	<i>Part Number</i>	<i>Qty.</i>	<i>Description</i>
1	36-8070	1	V-Belt	14	32151-68	4	Ring-Retaining
2	32151-36	2	Ring-Retaining	15	49-7700	2	Washer-Thrust, Outer
3	74-1810	2	Washer	16	74-1851	2	Pivot Arm ASM
4	48-2170	2	Cap-End	16:1	47-6730	1	Seal-Oil
5	32152-2	2	Nut-Lock, Cone	16:2	117-3500	1	Bearing-Caged Needle Roller
6	62-3830	2	Washer-Thrust, Outer	16:3	52-2450	1	Bearing-Wheel
7	39-9160	2	Gear-Pinion	16:5	92-6316	1	Zerk
8	74-1640	2	Cover-Wheel	17	119-2324	2	Rear Spring Arm ASM
9	100-2860	2	Wheel And Tire ASM	18	110-0549	2	Knob-HOC
10	323-13	2	Screw-HH	19	74-1960	1	Lever-Shift
11	74-1650	2	Spacer-Cover, Wheel	20	32121-99	1	Pin-Coil
12	39-9650	2	Spring-Compression	99	106-0975	1	Grass Bag ASM ●
13	612066	2	Key				

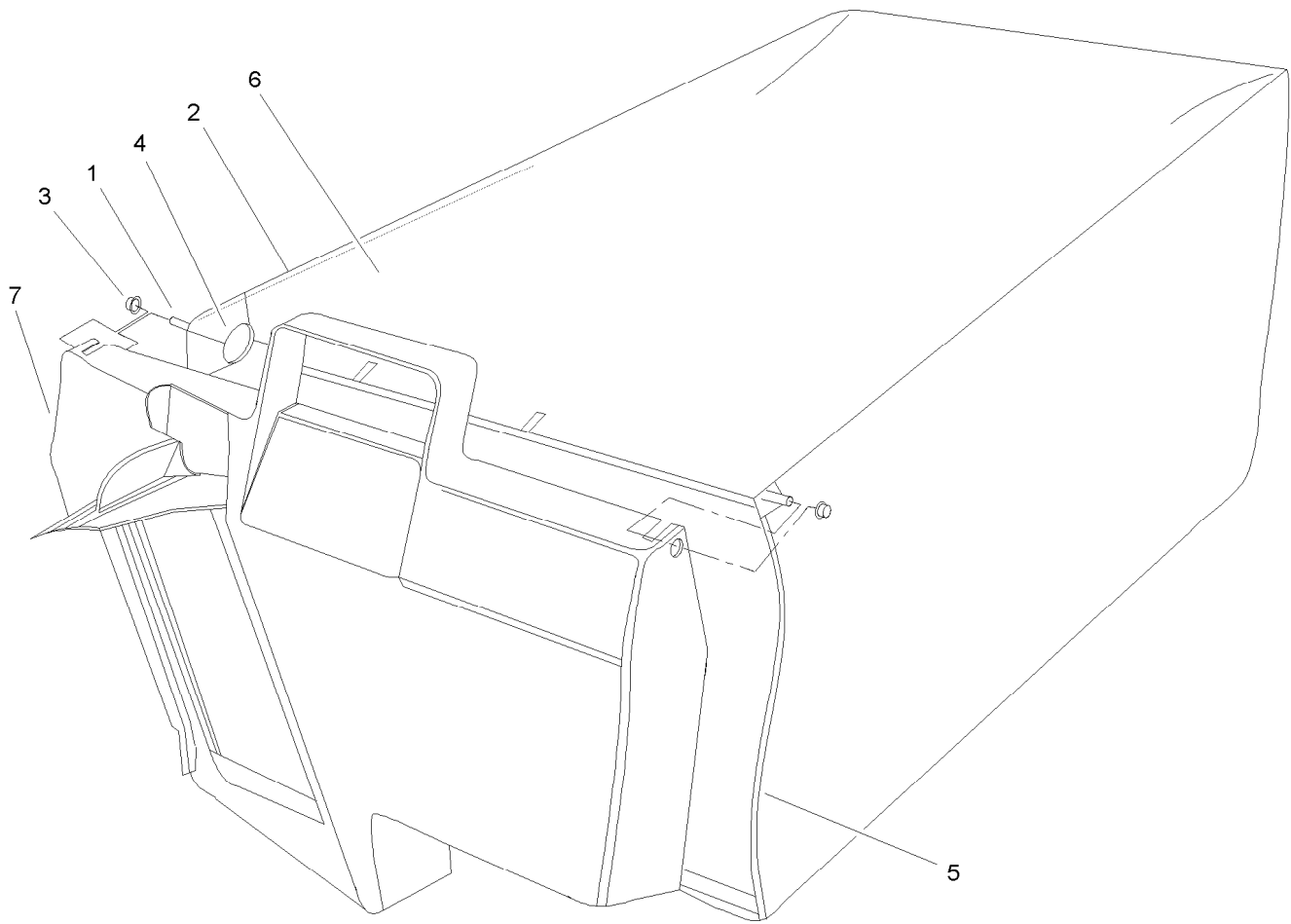
● Not illustrated



Rear Wheel Assembly No. 100-2860

Ref.	Part Number	Qty.	Description
1	53-7740	1	Tire
2		1	Wheel ASM ●
2:1		1	Hub And Bearing ASM ●
2:1:1	52-2410	1	Hub-Bearing
2:1:2	52-2440	1	Spacer-Bearing
2:1:3	52-2450	2	Bearing-Wheel
2:2	321-2	4	Screw-HH
2:3	3296-42	4	Nut-Lock, NI
2:4	53-7780-06	1	Plate-Wheel, Half
2:5	92-4957-06	1	Wheel Half And Gear ASM

● Not serviced separately



Grass Bag Assembly No. 106-0975

<i>Ref.</i>	<i>Part Number</i>	<i>Qty.</i>	<i>Description</i>
1	33-4820	1	Hinge-Door, Bag
2	42-4030	1	Frame-Bag, Upper
3	3290-422	2	Nut-Push
4	36-6910	2	Spring
5	42-4020	1	Frame-Bag
6	106-0926	1	Bag-Grass
7	48-2840	1	Door-Bag, Grass

Notes:

Notes:

Notes:



Count on it.