

Foot Assist Deck Lift Kit

2011 and After Zero-Turn-Radius Riding Mower

Model No. 79010

Installation Instructions

Installation

Loose Parts

Use the chart below to verify that all parts have been shipped.

Procedure	Description	Qty.	Use
1	No parts required	–	Prepare the machine.
2	Offset lift plate Bolt (5/16 x 1-1/4 inches) Lock nut (5/16 inch) Thrust washer Anti-seize lubricant Spacer Pedal bracket Bolt (3/8 x 1 inch) Lock nut (3/8 inch)	1 2 2 2 1 2 1 1 2	Install the brackets.
3	Pedal Flange bushing Flat washer (ID 17/32 inch) Cotter pin Lift rod	1 2 3 3 1	Install the pedal.
4	No parts required	–	Complete the setup.

1

Preparing the Machine

No Parts Required

Procedure

1. Park the machine on a level surface and disengage the blade control switch.
2. Move the motion control levers outward to the park position, stop the engine, remove the key, and wait for all moving parts to stop before leaving the operating position.
3. Raise the deck to the highest cutting height position. Place blocks below the deck to support it at its lowest, or next to lowest, cutting height position (Figure 1).

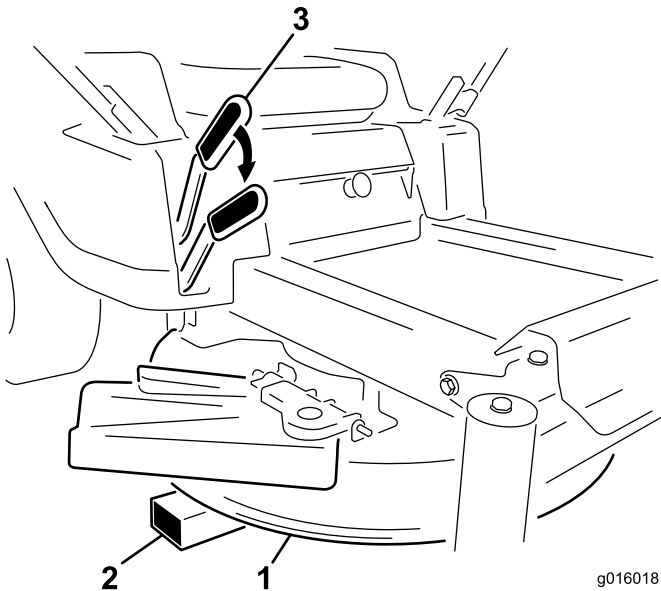


Figure 1

1. Mower deck
2. Block
3. Height-of-cut lever, lowered

4. Lower the deck until its weight is supported by the blocks (Figure 1). This will allow for the safe removal of the height of cut lift lever.

2

Installing the Brackets

Parts needed for this procedure:

1	Offset lift plate
2	Bolt (5/16 x 1-1/4 inches)
2	Lock nut (5/16 inch)
2	Thrust washer
1	Anti-seize lubricant
2	Spacer
1	Pedal bracket
1	Bolt (3/8 x 1 inch)
2	Lock nut (3/8 inch)

Procedure

1. Under the right pod, locate the lift arm and lift lever (Figure 2).
2. Remove the fasteners securing the lift arm to the lift lever face (Figure 2).

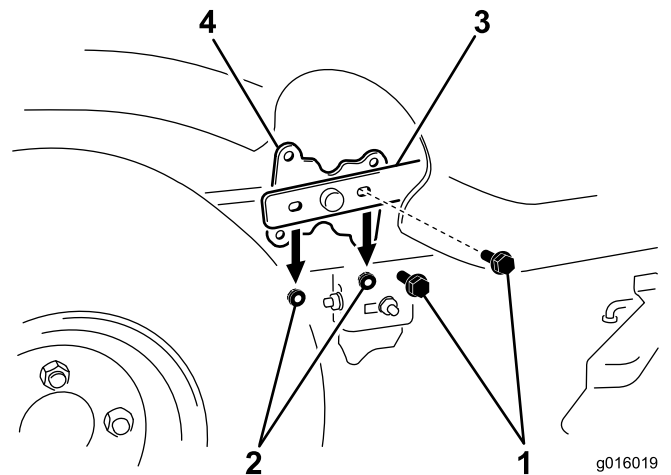


Figure 2

1. Bolt (5/16 x 1 inch)
2. Lock nut (5/16 inch)
3. Lift arm
4. Lift lever face

3. Locate the packet of anti-seize lubricant and two thrust washers in loose parts. Apply lubricant to both sides of each thrust washer.
4. Install a thrust washer over the pivot rod on the lift lever (Figure 3). Install the lift arm back to the lift lever face and washer. Cover the lift arm with another thrust washer.

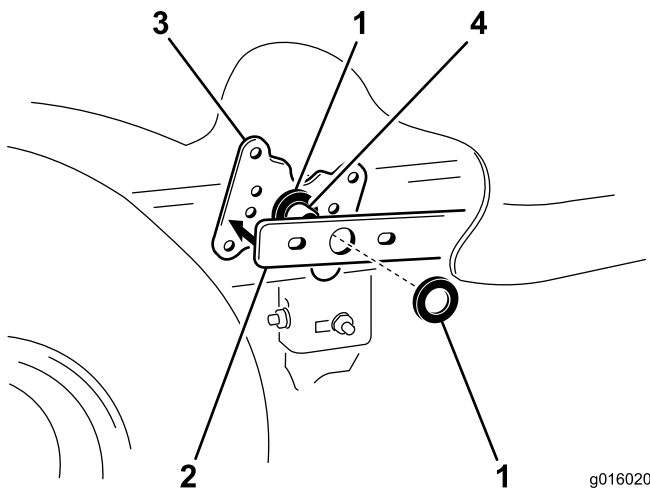


Figure 3

g016020

- 1. Thrust washer
- 2. Lift arm
- 3. Lift lever face
- 4. Pivot rod, lift lever

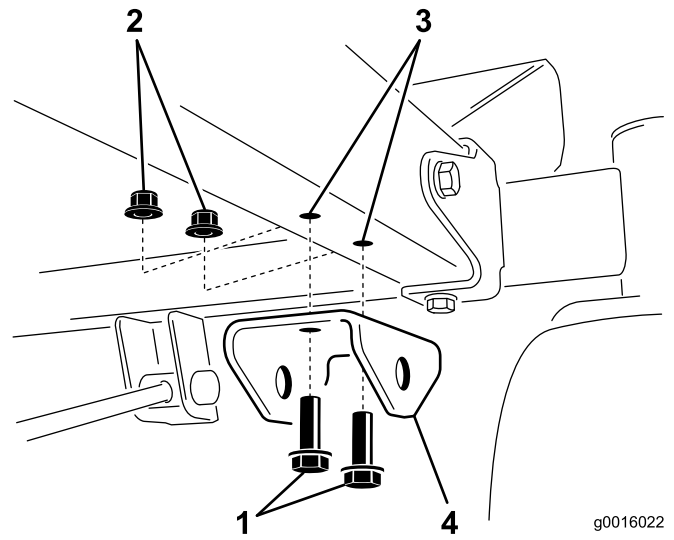


Figure 5

g0016022

- 1. Bolt (3/8 x 1 inch)
- 2. Lock nut (3/8 inch)
- 3. Holes in frame
- 4. Pedal bracket

5. Install two spacers covering the upper and lower holes in the lift lever face and the offset foot lift plate over the lift lever arm assembly (Figure 4). Install two bolts (5/16 x 1-1/4 inches) the holes in the lift plate, the spacers and lift lever face. Secure the entire assembly with the two lock nuts (5/16 inch).

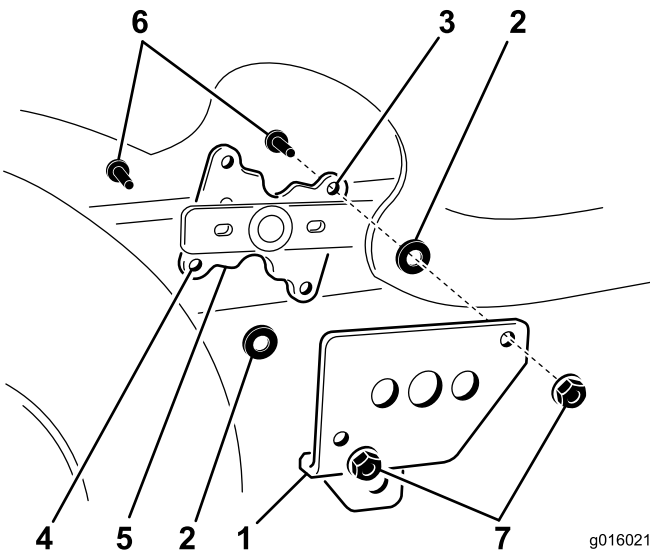


Figure 4

g016021

- 1. Offset bracket
- 2. Spacer
- 3. Upper hole
- 4. Lower hole
- 5. Lift lever face
- 6. Bolt (5/16 x 1-1/4 inches)
- 7. Lock nut (5/16 inch)

6. At the front, right side of the machine, install the pedal bracket to the frame as shown in Figure 5.

3

Installing the Pedal

Parts needed for this procedure:

1	Pedal
2	Flange bushing
3	Flat washer (ID 17/32 inch)
3	Cotter pin
1	Lift rod

Procedure

1. Install a flange bushing into each hole in the bracket as shown in Figure 6.

Note: You may need to tap the bushings into the bracket holes with a rubber mallet.

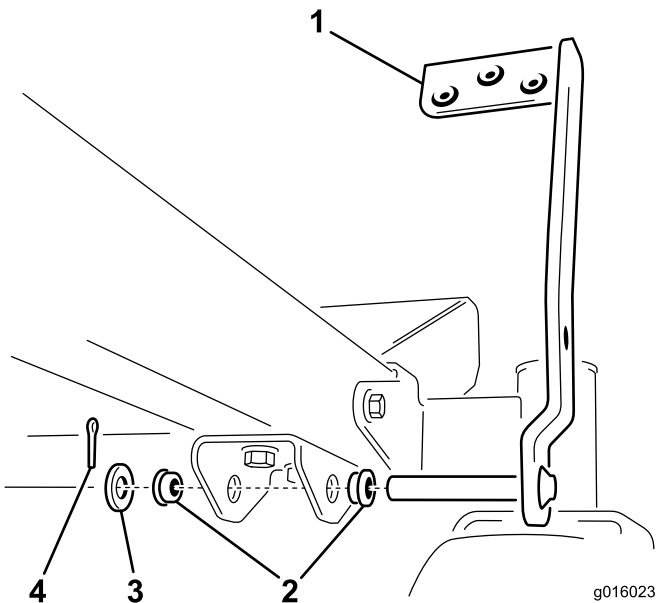


Figure 6

- | | |
|-------------------|---------------|
| 1. Pedal | 3. Washer |
| 2. Flange bushing | 4. Cotter pin |

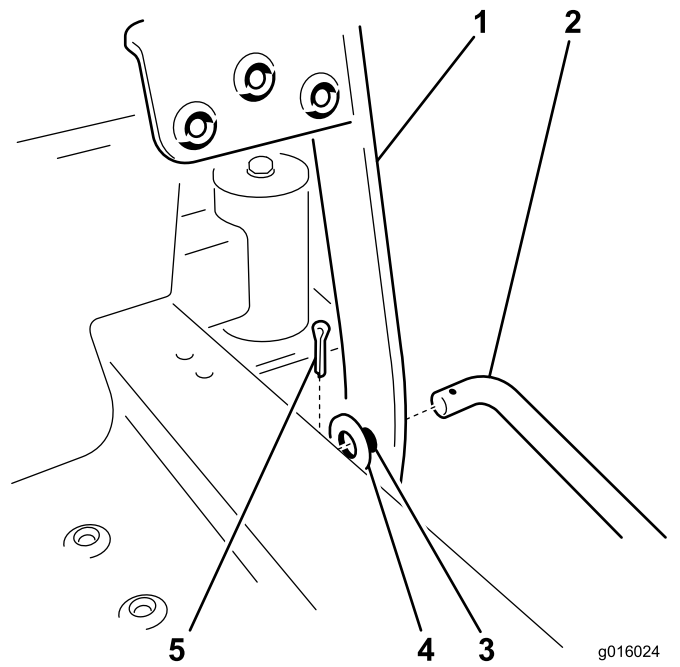


Figure 7

- | | |
|----------------------------|---------------|
| 1. Pedal arm | 4. Washer |
| 2. Bent end, lift rod | 5. Cotter pin |
| 3. Small hole in pedal arm | |

2. Install the foot pedal to the front bracket (Figure 6), inserting the pin of the pedal into the bracket holes with the flange bushings.
3. Secure the pedal with a flat washer (ID 17/32 inch) and cotter pin (Figure 7).
4. At the front of the machine, install the bent end of the lift rod through the small hole in the pedal arm (Figure 7). Install a washer over the protruding end and secure it with a cotter pin.

5. Install the bent end of the lift rod in to the large offset bracket from the outside (Figure 8). Install a washer over the protruding end and secure it with a cotter pin.

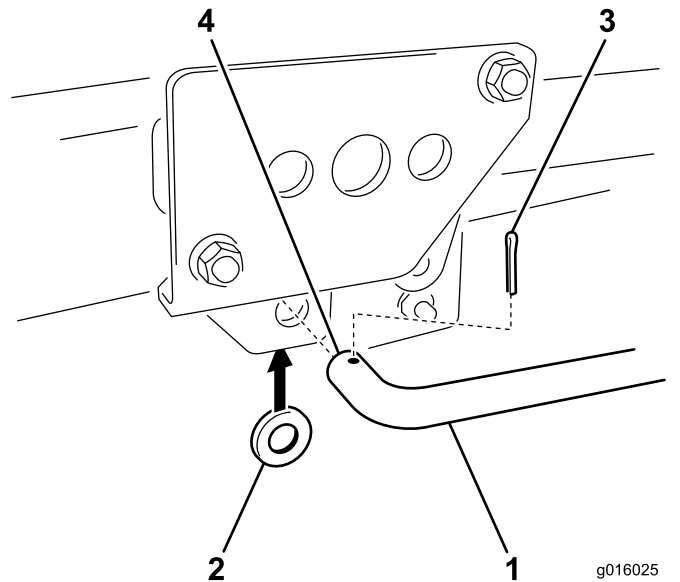


Figure 8

- | | |
|-----------------------|---------------|
| 1. Bent end, lift rod | 3. Cotter pin |
| 2. Washer | 4. Lift rod |

6. Check all fasteners securing the foot lift assist assembly, tighten as necessary.

4

Completing the Setup

No Parts Required

Procedure

1. Raise the deck to the highest height of cut.
2. Remove the blocks supporting the deck.
3. Use the height of cut lever and foot pedal to raise and lower the deck, check to see if there is any binding. If so, check the installation.
4. Readjust as necessary.

Operation

Adjusting the Height of Cut

1. Enter the operator's position. Place a foot on the foot assist pedal and apply pressure.
2. While maintaining pressure on the pedal, pull inward and up on the height-of-cut lever and move it to the desired position.
3. Raise the height-of-cut lever to the transport position, cutting height position 4.5 (also the 4-1/2 inch [115 mm]) (Figure 9).

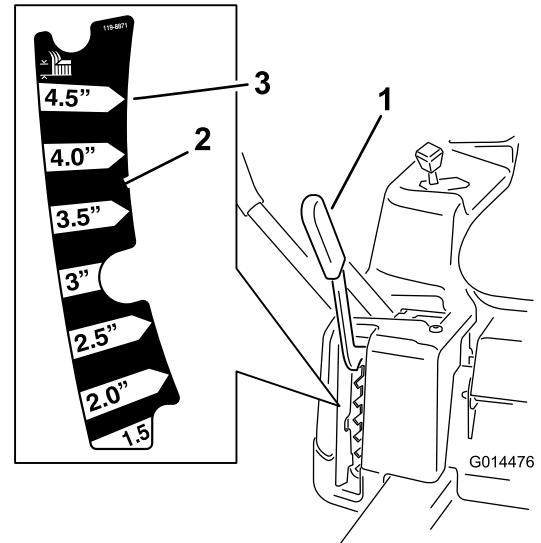


Figure 9

1. Height-of-cut lever
2. Height-of-cut positions
3. 4.5 inch (115 mm), Transport position

Notes:

Notes:

