



**Count on it.**

**Parts Catalog**

**Topdresser 1800**

**Workman® Heavy-Duty Utility Vehicle**

**Model No. 44225—Serial No. 31000001 and Up**

# Ordering Replacement Parts

To order replacement parts, please supply the part number, the quantity, and the description of each part desired.

## Understanding Reference Numbers

Each identified part in an illustration has a reference number. The reference number for a part also appears in the parts list, along with other information about the part.

This catalog uses two special reference number formats, one to indicate parts in a service assembly and another to indicate the quantity of a given part in an illustration.

## Service Assembly Reference Numbers

Parts in service assemblies have reference numbers in the form a:b. The a represents the reference number of the entire service assembly and the b represents a sequential number unique to each part within the service assembly.

For example, a wheel assembly might be identified by reference number 6, the tire by 6:1, the valve by 6:2, and the wheel by 6:3. When you order the assembly identified by reference number 6, you receive all parts identified by reference numbers 6:1, 6:2, and 6:3. However, you may also order any part individually. Reference numbers of this type appear in illustration and in parts lists.

## Reference Numbers Indicating Quantity

In an illustration, if a reference number indicates more than one part, the reference number has the form nX y. The n represents the quantity of the part, the X is the multiplication symbol, and the y represents the reference number.

For example, in an illustration, the reference number 2X 37 means that two of the parts identified by reference number 37 are indicated.

# List of Abbreviations

**AR:** as required

**ASM:** assembly

**BBC:** blade brake control

**BHTF:** button head thread forming

**CARR:** carriage

**CCW:** counter clockwise

**CW:** clockwise

**DEG:** degrees

**DPA:** Dual Point Adjustment

**ECM:** electronic control module

**EXT:** external

**FH:** flat head

**GA:** gauge

**HD:** heavy-duty

**HF:** hex flange

**HH:** hex head

**HHF:** hex head flange

**HHFTF:** hex head flange thread forming

**HJ:** hex jam

**HLH:** hex lag head

**HOC:** height-of-cut

**HSBH:** hex socket button head

**HSFH:** hex socket flat head

**HSH:** hex socket head

**HWH:** hex washer head

**HWTF:** hex washer head thread forming

**HYD:** hydraulic

**LH:** left hand

**LP:** Liquid Propane

**NI:** nylon insert

**NPTF:** national pipe thread fine

**PFH:** phillips flat head

**PPH:** phillips pan head

**PPHTF:** phillips pan head thread forming

**PRH:** phillips round head

**PTH:** phillips truss head

**PTO:** power-take-off

**RH:** right hand

**ROPS:** roll-over protection system

**RRB:** rear roller brush

**SFH:** slotted fillister head

**SHH:** slotted hex head

**SHWH:** slotted hex washer head

**SPH:** slotted pan head

**SQH:** square head

**SRH:** slotted round head

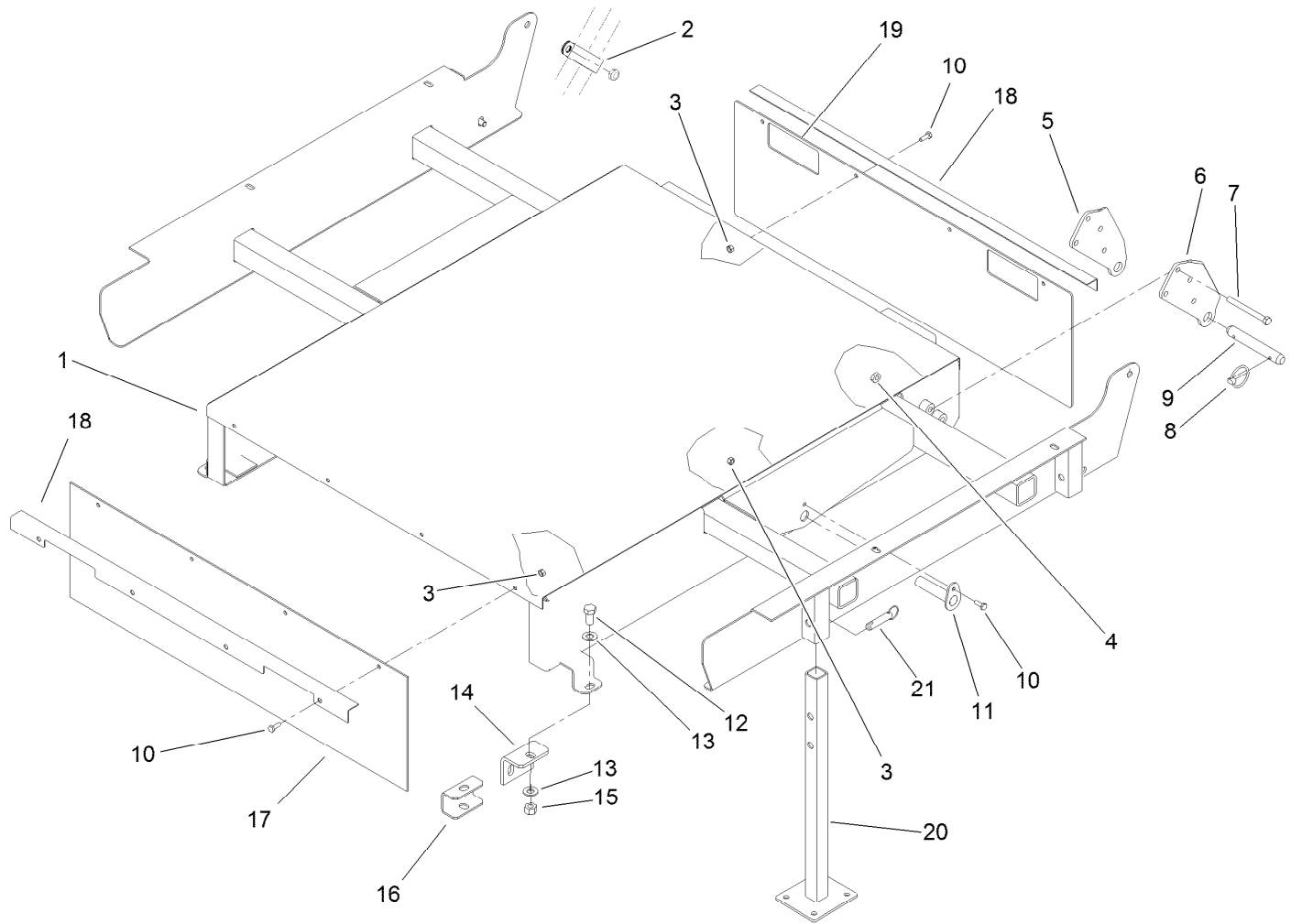
**STD:** standard

**TAP:** self tapping

**TTH:** torx truss head

# Contents

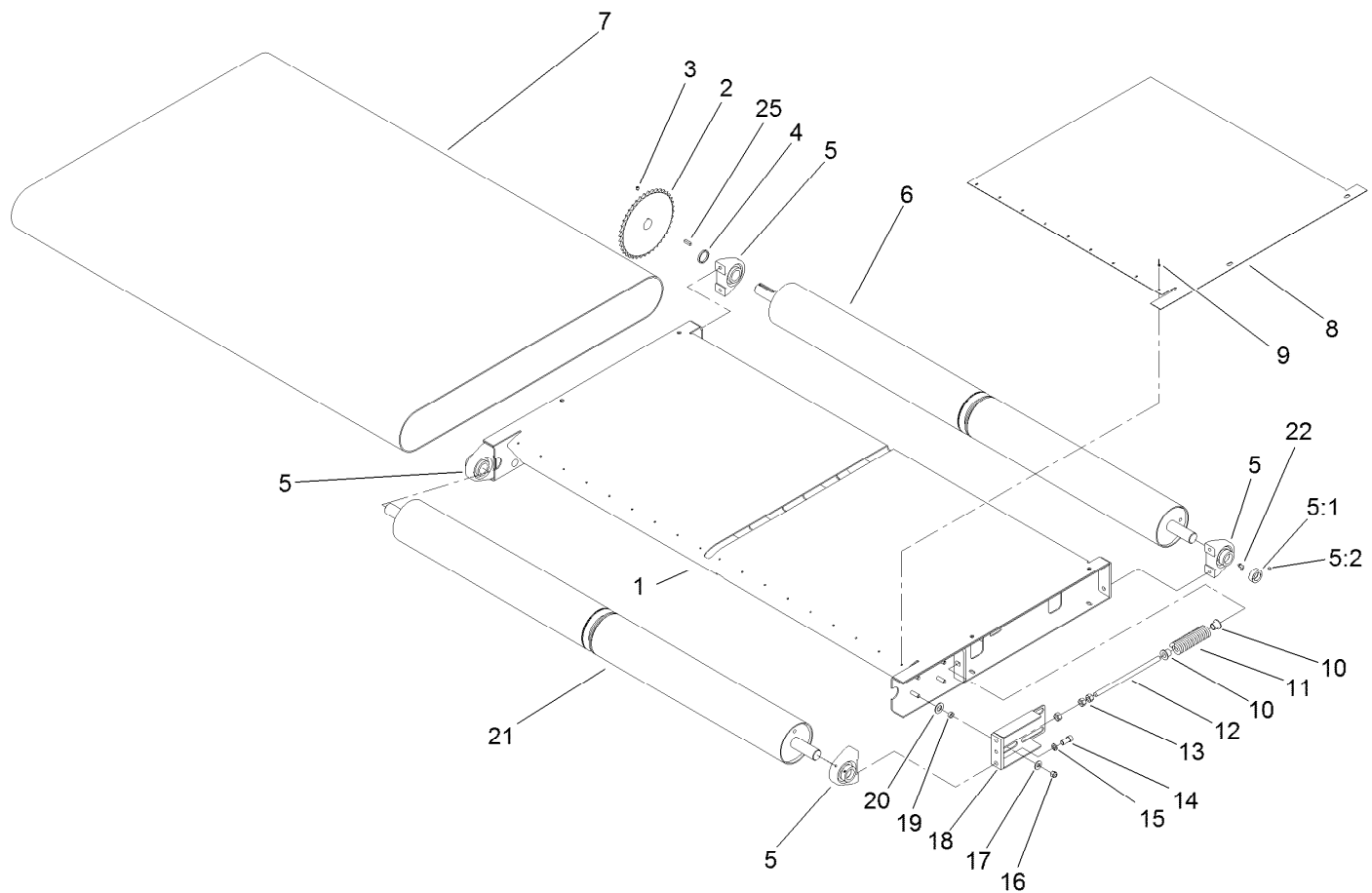
- Base Assembly ..... 4
- Slider Bed and Roller Assembly ..... 5
- Gate Assembly ..... 6
- Brush and Motor Assembly ..... 7
- Hopper Assembly ..... 9
- Gate Slide and Brush Guard Assembly ..... 10
- Chain, Sprocket and Guard Assembly ..... 11



## Base Assembly

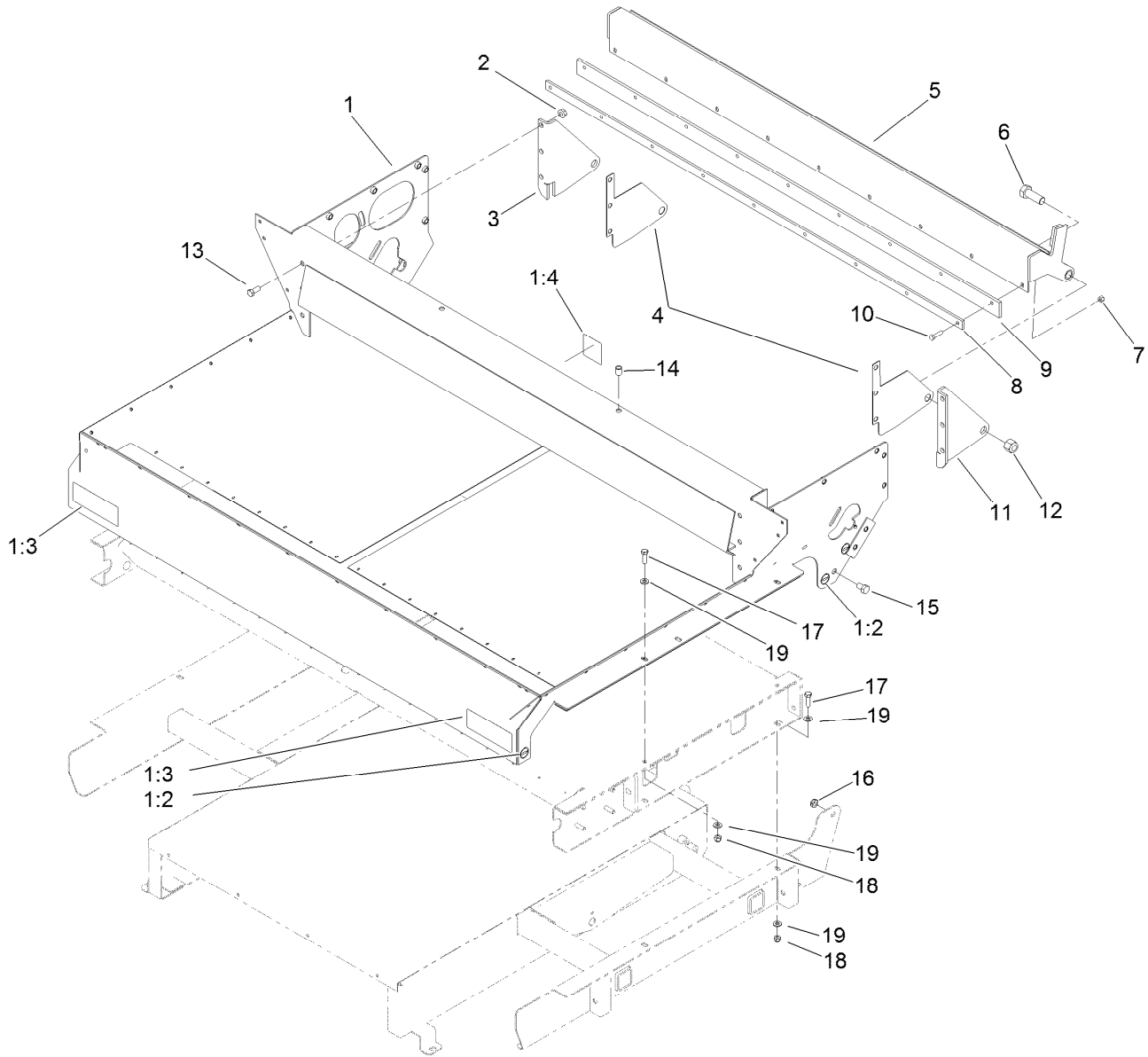
| Ref. | Part Number | Qty. | Description              | Ref. | Part Number | Qty. | Description      |
|------|-------------|------|--------------------------|------|-------------|------|------------------|
| 1    | 106-7857-01 | 1    | Base ASM                 | 12   | 325-4       | 4    | Screw-HH         |
| 2    | 100-1424    | 1    | Clamp-R                  | 13   | 3256-26     | 8    | Washer-Flat      |
| 3    | 3296-42     | 10   | Nut-Lock, NI             | 14   | 92-2667-03  | 2    | Bracket-Mount    |
| 4    | 3296-44     | 8    | Nut-Lock, NI             | 15   | 3296-25     | 4    | Nut-Lock, NI     |
| 5    | 93-9721-03  | 2    | Bracket-Pivot, Long (RH) | 16   | 92-4576     | 2    | Spacer-Mount     |
| 6    | 93-9720-03  | 2    | Bracket-Pivot, Long (LH) | 17   | 100-1423    | 1    | Cover-Rubber     |
| 7    | 323-42      | 8    | Screw-HH                 | 18   | 106-7859-01 | 2    | Clamp-Rubber     |
| 8    | 92-1298     | 4    | Pin-Lynch                | 19   | 106-7860    | 1    | Cover-Rubber     |
| 9    | 92-1233     | 2    | Pin-Clevis               | 20   | 105-9482-03 | 4    | Jack Stand ASM ● |
| 10   | 321-4       | 10   | Screw-HH                 | 21   | 100-4523    | 4    | Pin-Hitch ●      |
| 11   | 92-4459     | 2    | Pin-Cylinder             |      |             |      |                  |

● Optional Equipment



## Slider Bed and Roller Assembly

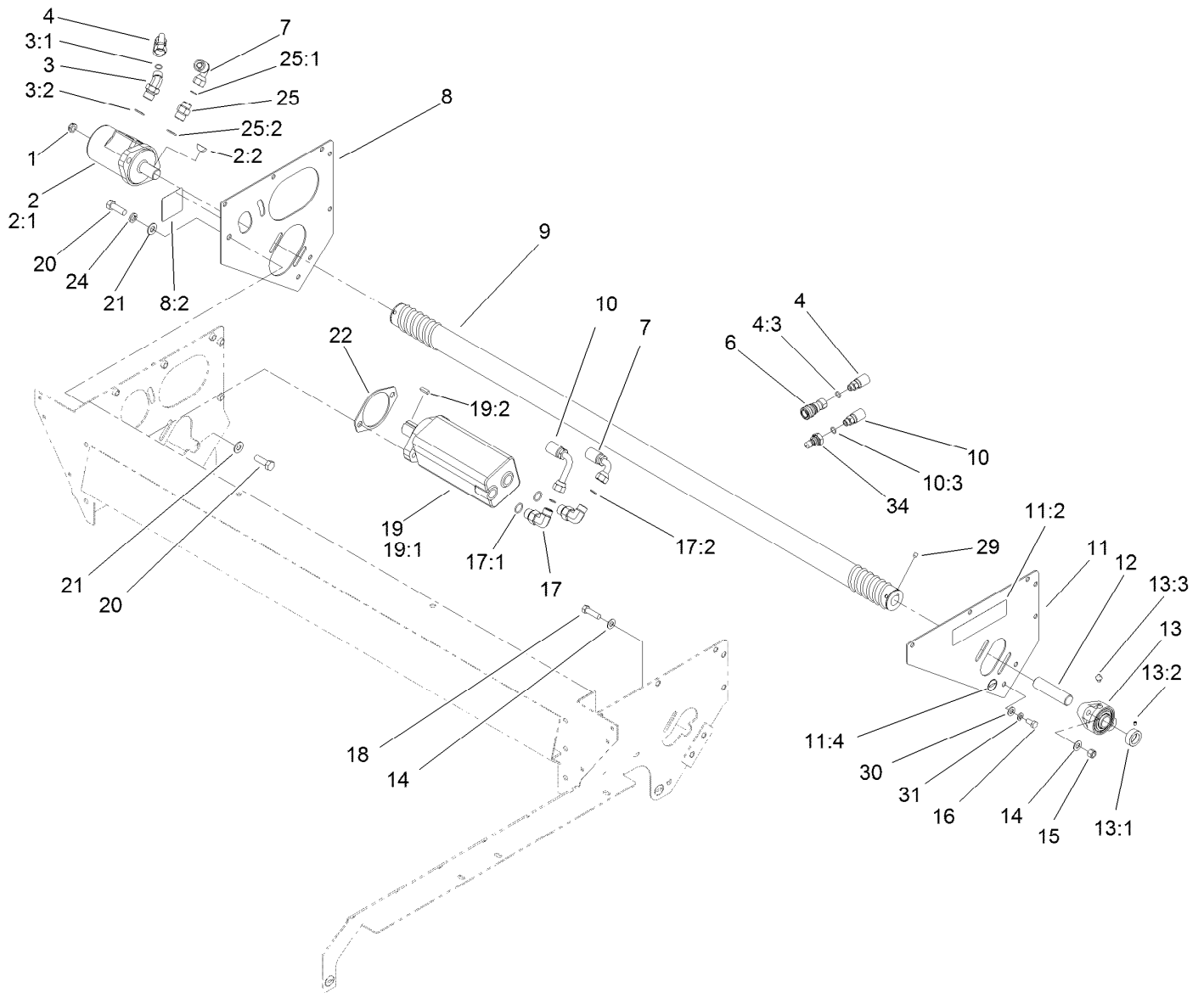
| Ref. | Part Number | Qty. | Description          | Ref. | Part Number | Qty. | Description             |
|------|-------------|------|----------------------|------|-------------|------|-------------------------|
| 1    | 99-0038-01  | 1    | Frame-Bed, Slider    | 12   | 99-0118     | 2    | Pin-Spring              |
| 2    | 99-0166-03  | 1    | Sprocket-Driven      | 13   | 3217-9      | 6    | Nut-HH                  |
| 3    | 3246-3      | 2    | Screw-HSH            | 14   | 100-1438    | 8    | Screw-Socket Head, Torx |
| 4    | 99-0017     | 1    | Spacer-Sprocket      | 15   | 3253-6      | 8    | Washer-Lock             |
| 5    | 99-0158     | 4    | Bearing-Base, Tapped | 16   | 3296-39     | 8    | Nut-Lock, NI            |
| 5:1  | 251-246     | 1    | Collar W/Set Screws  | 17   | 3256-4      | 8    | Washer-Flat             |
| 5:2  | 106-9662    | 1    | Screw-Set, HSH       | 18   | 99-0050-01  | 2    | Spring Plate ASM        |
| 6    | 99-0046     | 1    | Roller-Rear          | 19   | 99-0052     | 8    | Washer-Slide            |
| 7    | 100-1425    | 1    | Belt Kit             | 20   | 100-1401    | 8    | Spacer-Slide, Spring    |
| 8    | 99-0047     | 2    | Plate-Wear           | 21   | 99-0044     | 1    | Roller-Front            |
| 9    | 3269-28     | 18   | Rivet-Pop            | 22   | 302-60      | 4    | Fitting-Grease          |
| 10   | 100-1414    | 4    | Holder-Spring        | 25   | 10-7070     | 1    | Key-Square              |
| 11   | 99-0163     | 2    | Spring-Compression   |      |             |      |                         |



## Gate Assembly

| Ref. | Part Number | Qty. | Description            |
|------|-------------|------|------------------------|
| 1    | 119-0761    | 1    | Hopper Frame ASM       |
| 1:2  | 58-6520     | 4    | Decal-Grease           |
| 1:3  | 93-9092     | 2    | Decal-Warning          |
| 1:4  | 105-4586    | 1    | Decal-Shield           |
| 2    | 32128-37    | 6    | Nut-HF                 |
| 3    | 99-0079-01  | 1    | Bracket-Gate Pivot, RH |
| 4    | 99-0117     | 2    | Wareplate-Gate         |
| 5    | 99-0068-01  | 1    | Gate ASM               |
| 6    | 328-24      | 2    | Screw-HH               |
| 7    | 3296-29     | 9    | Nut-Lock, NI           |
| 8    | 99-0089-01  | 1    | Plate-Backing          |

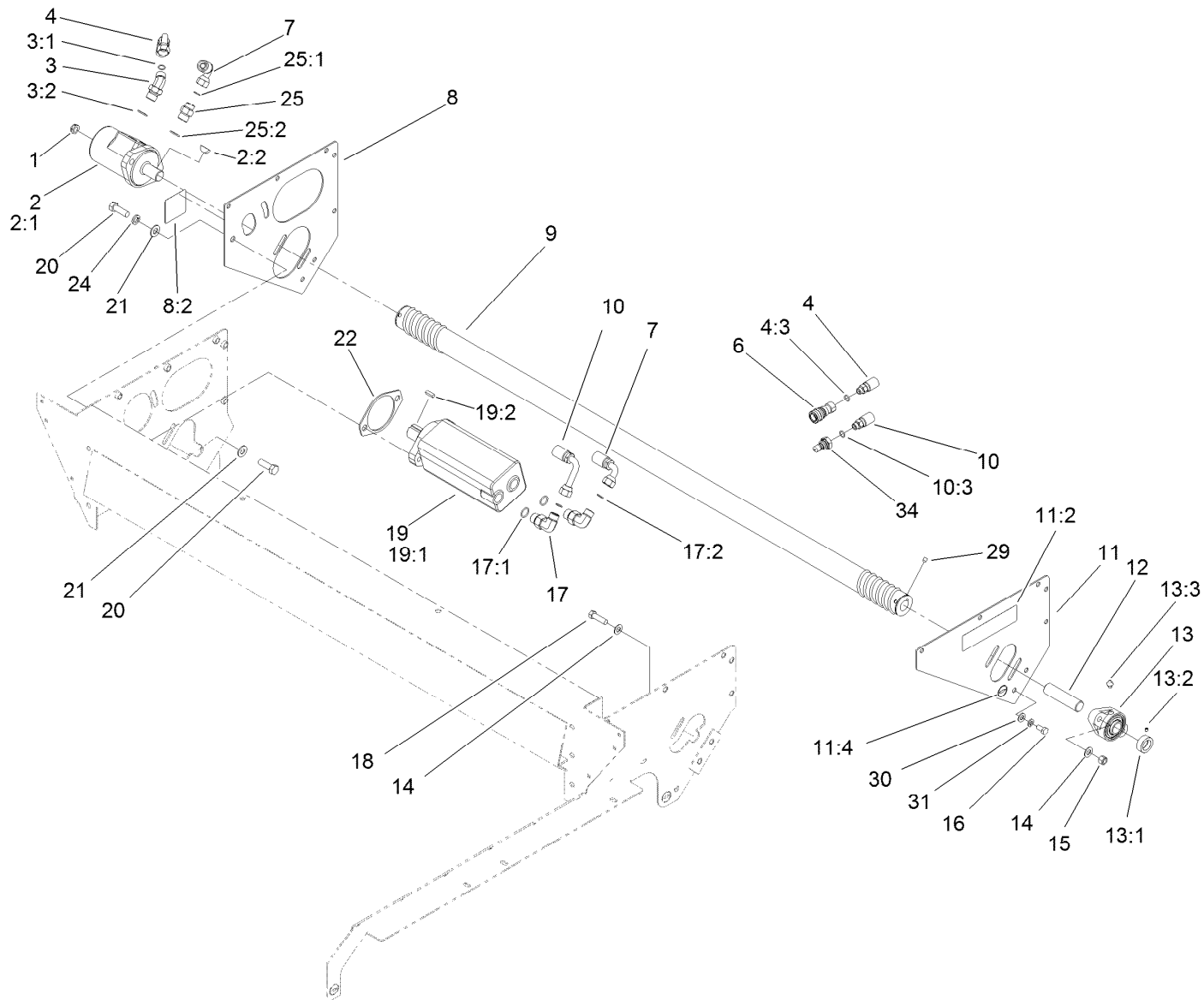
| Ref. | Part Number | Qty. | Description            |
|------|-------------|------|------------------------|
| 9    | 99-0074     | 1    | Seal-Gate              |
| 10   | 322-6       | 9    | Screw-HH               |
| 11   | 99-0078-01  | 1    | Bracket-Gate Pivot, LH |
| 12   | 3296-51     | 2    | Nut-Lock, NI           |
| 13   | 324-4       | 6    | Screw-HH               |
| 14   | 32148-9     | 2    | Insert-Nut             |
| 15   | 325-2       | 2    | Screw-HH               |
| 16   | 3296-45     | 2    | Nut-Lock, NI           |
| 17   | 323-7       | 8    | Screw-HH               |
| 18   | 3296-39     | 8    | Nut-Lock, NI           |
| 19   | 3256-24     | 16   | Washer-Flat            |



## Brush and Motor Assembly

| Ref. | Part Number | Qty. | Description           | Ref. | Part Number | Qty. | Description            |
|------|-------------|------|-----------------------|------|-------------|------|------------------------|
| 1    | 3296-23     | 2    | Nut-Lock, NI          | 12   | 99-0041     | 1    | Shaft-Brush            |
| 2    | 99-0156     | 1    | HYD Motor ASM         | 13   | 99-0160     | 1    | Bearing                |
| 2:1  | 100-1446    | 1    | Seal Kit ●            | 13:1 | 251-249     | 1    | Collar W/Set Screws    |
| 2:2  | 3257-8      | 1    | Key-Woodruff          | 13:2 | 3245-35     | 1    | Screw-Set, HSH         |
| 3    | 340-89      | 1    | Fitting-HYD, 45 DEG   | 13:3 | 302-2       | 1    | Fitting-Grease         |
| 3:1  | 237-30      | 1    | O-Ring                | 14   | 3256-25     | 4    | Washer-Flat            |
| 3:2  | 237-80      | 1    | O-Ring                | 15   | 3296-48     | 2    | Nut-Lock, NI           |
| 4    | 110-1962    | 1    | HYD Hose ASM          | 16   | 323-4       | 4    | Screw-HH               |
| 4:3  | 237-42      | 1    | O-Ring                | 17   | 340-105     | 2    | Fitting-HYD, 90 DEG    |
| 6    | 106-7968    | 1    | Coupler-Quick, Female | 17:1 | 237-80      | 1    | O-Ring                 |
| 7    | 99-0177     | 1    | Hose-HYD              | 17:2 | 237-30      | 1    | O-Ring                 |
| 8    | 100-1431    | 1    | RH Motor Brace ASM    | 18   | 324-6       | 2    | Screw-HH               |
| 8:2  | 105-4586    | 1    | Decal-Shield          | 19   | 99-0155     | 1    | HYD Motor Conveyor ASM |
| 9    | 99-0162     | 1    | Brush                 | 19:1 | 56-6890     | 1    | Seal Kit ●             |
| 10   | 110-1963    | 1    | HYD Hose ASM          | 19:2 | 10-7070     | 1    | Key-Square             |
| 10:3 | 237-42      | 1    | O-Ring                | 20   | 325-7       | 4    | Screw-HH               |
| 11   | 100-1430    | 1    | LH Motor Brace ASM    | 21   | 3256-26     | 4    | Washer-Flat            |
| 11:2 | 106-7750    | 1    | Decal-Danger          | 22   | 99-0116     | 1    | Plate-Spacer           |
| 11:4 | 58-6520     | 1    | Decal-Grease          | 24   | 3253-7      | 2    | Washer-Lock            |

● Not illustrated



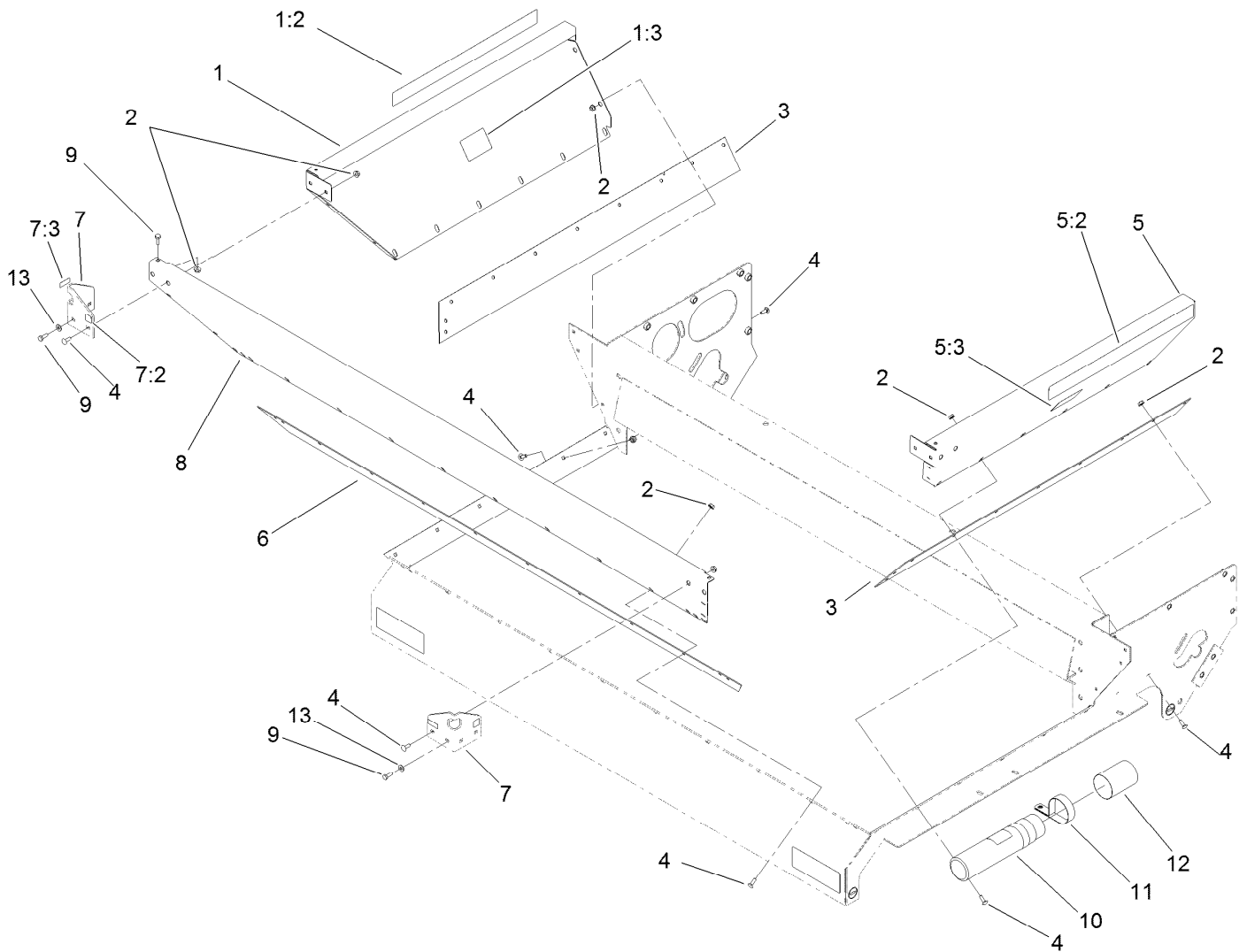
## Brush and Motor Assembly (continued)

| Ref. | Part Number | Qty. | Description           |
|------|-------------|------|-----------------------|
| 25   | 340-6       | 1    | Fitting-HYD, Straight |
| 25:1 | 237-30      | 1    | O-Ring                |
| 25:2 | 237-80      | 1    | O-Ring                |
| 29   | 3246-3      | 4    | Screw-HSH             |

| Ref. | Part Number | Qty. | Description         |
|------|-------------|------|---------------------|
| 30   | 3256-24     | 4    | Washer-Flat         |
| 31   | 3253-21     | 4    | Washer-Lock         |
| 34   | 106-7969    | 1    | Coupler-Quick, Male |

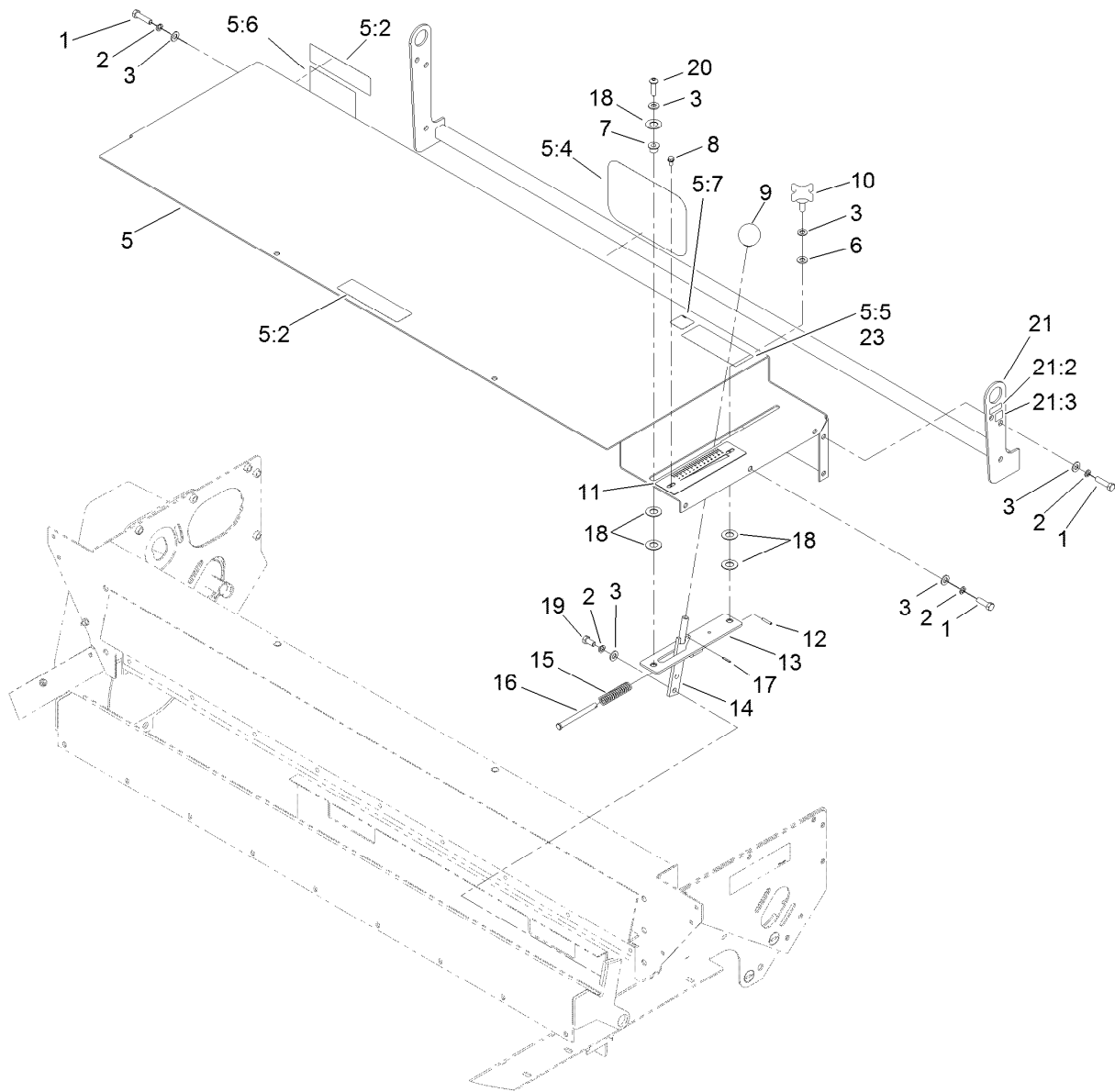
● Not illustrated





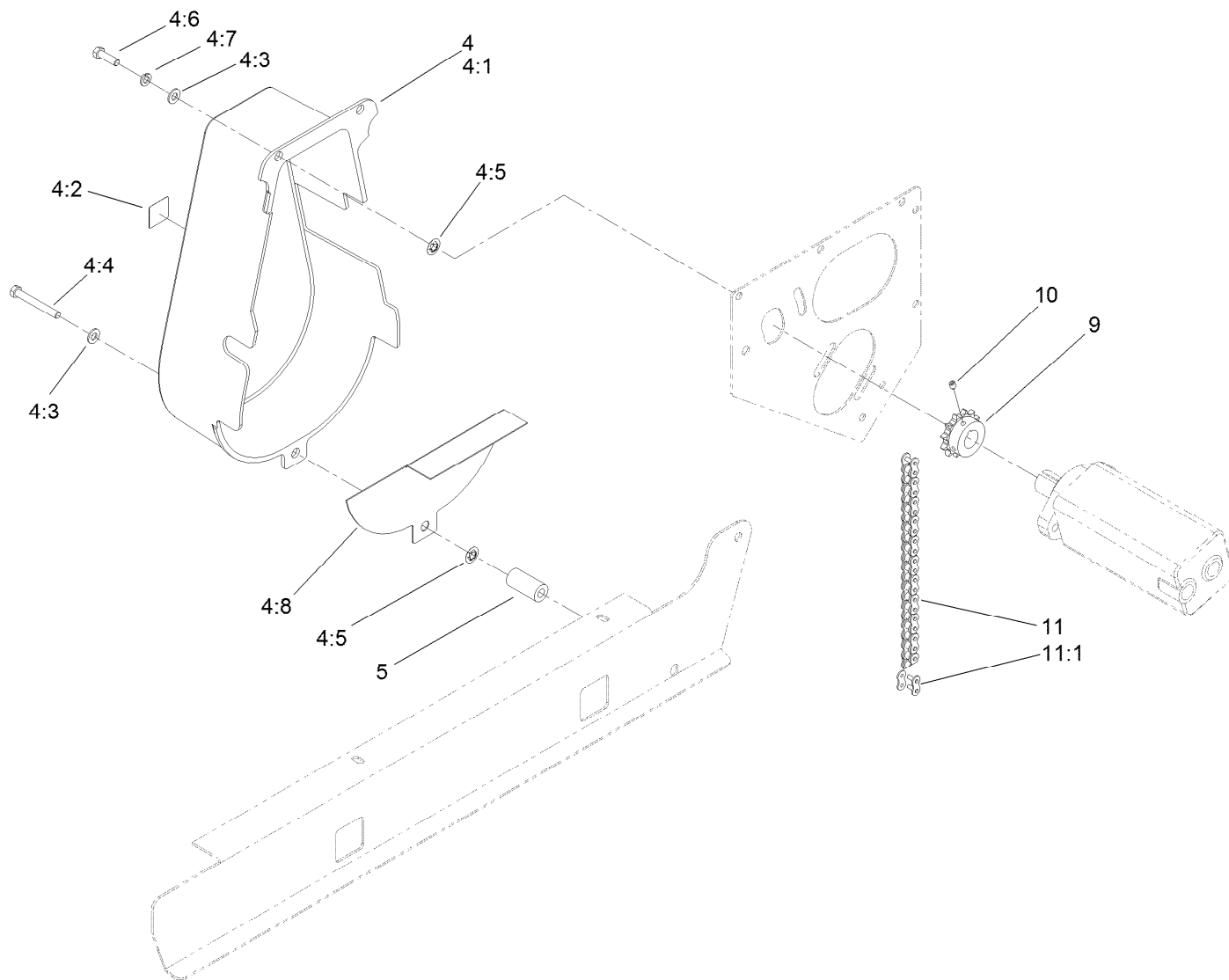
## Hopper Assembly

| Ref. | Part Number | Qty. | Description         | Ref. | Part Number | Qty. | Description         |
|------|-------------|------|---------------------|------|-------------|------|---------------------|
| 1    | 100-1434    | 1    | RH Hopper Panel ASM | 7    | 100-1428    | 2    | Front Lift Eye ASM  |
| 1:2  | 99-0013     | 1    | Decal               | 7:2  | 93-9084     | 1    | Decal-Point, Lift   |
| 1:3  | 94-1235     | 1    | Decal-Capacity      | 7:3  | 93-9529     | 1    | Decal-Value, Kg     |
| 2    | 32128-33    | 44   | Nut-HF              | 8    | 99-0020     | 1    | Panel-Hopper, Front |
| 3    | 99-0142     | 2    | Seal-Sand, Side     | 9    | 321-4       | 6    | Screw-HH            |
| 4    | 3229-25     | 38   | Screw-CARR          | 10   | 104-7050    | 1    | Tube-Manual         |
| 5    | 100-1433    | 1    | LH Hopper Panel ASM | 11   | 2412-133    | 2    | R-Clamp             |
| 5:2  | 99-0013     | 1    | Decal               | 12   | 104-7048    | 1    | Cap-Housing         |
| 5:3  | 94-1235     | 1    | Decal-Capacity      | 13   | 3256-22     | 4    | Washer-Flat         |
| 6    | 99-0143     | 1    | Seal-Sand, Front    |      |             |      |                     |



## Gate Slide and Brush Guard Assembly

| Ref. | Part Number | Qty. | Description     | Ref. | Part Number | Qty. | Description           |
|------|-------------|------|-----------------|------|-------------|------|-----------------------|
| 1    | 323-7       | 10   | Screw-HH        | 11   | 100-1416    | 1    | Scale-Gate            |
| 2    | 3253-21     | 12   | Washer-Lock     | 12   | 32121-45    | 1    | Pin-Spring            |
| 3    | 3256-24     | 13   | Washer-Flat     | 13   | 99-0073-03  | 1    | Slide Block Plate ASM |
| 5    | 100-1432    | 1    | Brush Guard ASM | 14   | 100-1406-03 | 1    | Gate Handle ASM       |
| 5:2  | 106-7750    | 2    | Decal-Danger    | 15   | 100-1448    | 1    | Spring-Gate           |
| 5:4  | 92-1242     | 1    | Decal           | 16   | 100-1413    | 1    | Pin-Clevis            |
| 5:5  | 105-0707    | 1    | Decal-Warning   | 17   | 32121-40    | 1    | Pin-Spring            |
| 5:6  | 105-0708    | 1    | Decal-Danger    | 18   | 99-0052     | 5    | Washer-Slide          |
| 5:7  | 98-3114     | 1    | Decal-Warning   | 19   | 323-4       | 2    | Screw-HH              |
| 6    | 95-4896     | 1    | Washer-Nylon    | 20   | 3274-63     | 1    | Screw-HSBH            |
| 7    | 256-259     | 1    | Bushing-Flange  | 21   | 106-0281    | 1    | Bumper ASM            |
| 8    | 93-6083     | 2    | Screw-HWH       | 21:2 | 93-9529     | 2    | Decal-Value, Kg       |
| 9    | 233-48      | 1    | Knob            | 21:3 | 93-9084     | 2    | Decal-Point, Lift     |
| 10   | 100-1449    | 1    | Knob            | 23   | 105-0698    | 1    | Decal-Caution         |



## Chain, Sprocket and Guard Assembly

| <i>Ref.</i> | <i>Part Number</i> | <i>Qty.</i> | <i>Description</i>    |
|-------------|--------------------|-------------|-----------------------|
| 4           | 119-0743           | 1           | Chain Guard ASM       |
| 4:1         | 99-0171            | 1           | Guard-Chain (Plastic) |
| 4:2         | 98-3114            | 1           | Decal-Warning         |
| 4:3         | 3256-24            | 3           | Washer-Flat           |
| 4:4         | 99-8664            | 1           | Screw-HH              |
| 4:5         | 107-3154           | 3           | Nut-Push              |
| 4:6         | 323-7              | 2           | Screw-HH              |
| 4:7         | 3253-21            | 2           | Washer-Lock           |
| 4:8         | 106-2326-03        | 1           | Guard-Finger          |
| 5           | 100-1442           | 1           | Spacer-Guard          |
| 9           | 99-0165-03         | 1           | Sprocket-Drive        |
| 10          | 3246-3             | 2           | Screw-HSH             |
| 11          | 99-0164            | 1           | Chain-Roller          |
| 11:1        | 2710-16            | 1           | Link-Chain            |



**Count on it.**