



Hose Plug Kit

Greensmaster® 3400 TriFlex™ Traction Unit

Model No. 120-2029

Installation Instructions

Loose Parts

Use the chart below to verify that all parts have been shipped.

Description	Qty.	Use
Hose plug	1	Install the kit.
Hose clamp	1	

Installing the Kit

1. Park the machine on a level surface, turn off the engine, remove the ignition key, and set the parking brake.
2. Remove the 4 bolts, 4 flat washers, 4 rubber washers, and 4 spacers that secure the cover to the hydraulic oil tank (Figure 1).
3. Loosen the hose clamp that is closest to the cover (Figure 1).
4. Remove the cover from the hydraulic tank, leaving the hose attached to the cover.
5. Insert the plug into the open end of the hose until the plug stops in the hose against the neck that protrudes from the hydraulic oil tank (Figure 1).
6. Slip a hose clamp from loose parts over the hose, but do not tighten the clamp.
7. Slip the hose clamp that you previously removed over the hose end.
8. Insert the open end of the hose over the barb on the cover.
9. Secure the hose end by tightening the end hose clamp.
10. Install the cover onto the hydraulic oil tank with the 4 bolts, 4 flat washers, 4 rubber washers, and 4 spacers that you previously removed.
11. Position the loose clamp in the middle of the hose over the plug and tighten the clamp.

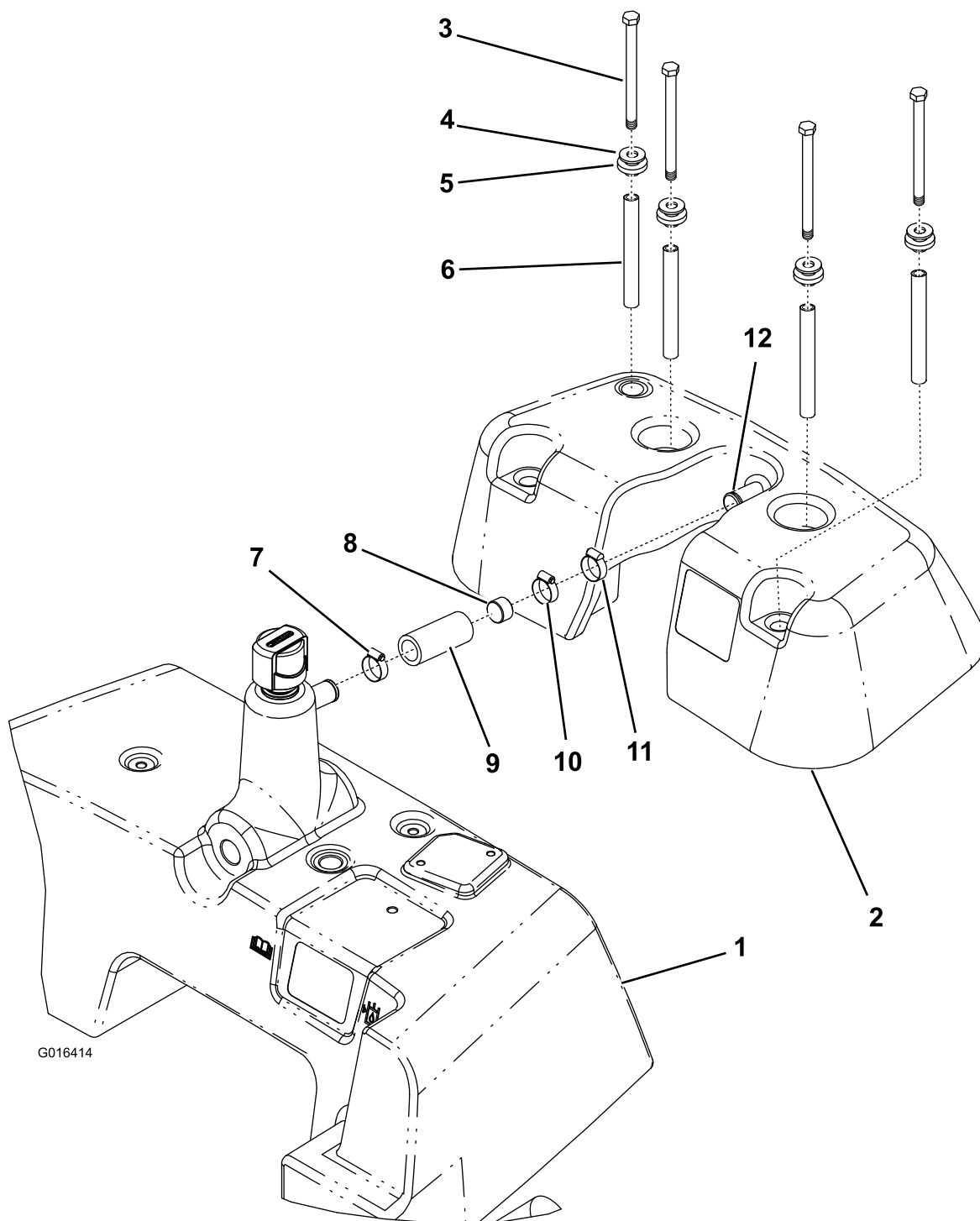


Figure 1

- | | | |
|-----------------------|-------------------------------|--|
| 1. Hydraulic oil tank | 5. Rubber washer (4) | 9. Hose |
| 2. Cover | 6. Spacer (4) | 10. Hose clamp (from loose parts kit) |
| 3. Bolt (4) | 7. Hose clamp (do not loosen) | 11. Hose clamp (loosen this clamp to disconnect the cover from the hydraulic oil tank) |
| 4. Flat washer (4) | 8. Hose plug | 12. Neck on outer housing |