



Count on it.

Parts Catalog

**Vibratory Plow
Compact Utility Loaders**

Model No. 22911—Serial No. 270000001 and Up

Ordering Replacement Parts

To order replacement parts, please supply the part number, the quantity, and the description of each part desired.

Understanding Reference Numbers

Each identified part in an illustration has a reference number. The reference number for a part also appears in the parts list, along with other information about the part.

This catalog uses two special reference number formats, one to indicate parts in a service assembly and another to indicate the quantity of a given part in an illustration.

Service Assembly Reference Numbers

Parts in service assemblies have reference numbers in the form a:b. The a represents the reference number of the entire service assembly and the b represents a sequential number unique to each part within the service assembly.

For example, a wheel assembly might be identified by reference number 6, the tire by 6:1, the valve by 6:2, and the wheel by 6:3. When you order the assembly identified by reference number 6, you receive all parts identified by reference numbers 6:1, 6:2, and 6:3. However, you may also order any part individually. Reference numbers of this type appear in illustration and in parts lists.

Reference Numbers Indicating Quantity

In an illustration, if a reference number indicates more than one part, the reference number has the form nX y. The n represents the quantity of the part, the X is the multiplication symbol, and the y represents the reference number.

For example, in an illustration, the reference number 2X 37 means that two of the parts identified by reference number 37 are indicated.

List of Abbreviations

AR: as required

ASM: assembly

BBC: blade brake control

BHTF: button head thread forming

CARR: carriage

CCW: counter clockwise

CW: clockwise

DEG: degrees

DPA: Dual Point Adjustment

ECM: electronic control module

EXT: external

FH: flat head

GA: gauge

HD: heavy-duty

HF: hex flange

HH: hex head

HHF: hex head flange

HHFTF: hex head flange thread forming

HJ: hex jam

HLH: hex lag head

HOC: height-of-cut

HSBH: hex socket button head

HSFH: hex socket flat head

HSH: hex socket head

HWH: hex washer head

HWHTF: hex washer head thread forming

HYD: hydraulic

LH: left hand

LP: Liquid Propane

NI: nylon insert

NPTF: national pipe thread fine

PFH: phillips flat head

PPH: phillips pan head

PPHTF: phillips pan head thread forming

PRH: phillips round head

PTH: phillips truss head

PTO: power-take-off

RH: right hand

ROPS: roll-over protection system

RRB: rear roller brush

SFH: slotted fillister head

SHH: slotted hex head

SHWH: slotted hex washer head

SPH: slotted pan head

SQH: square head

SRH: slotted round head

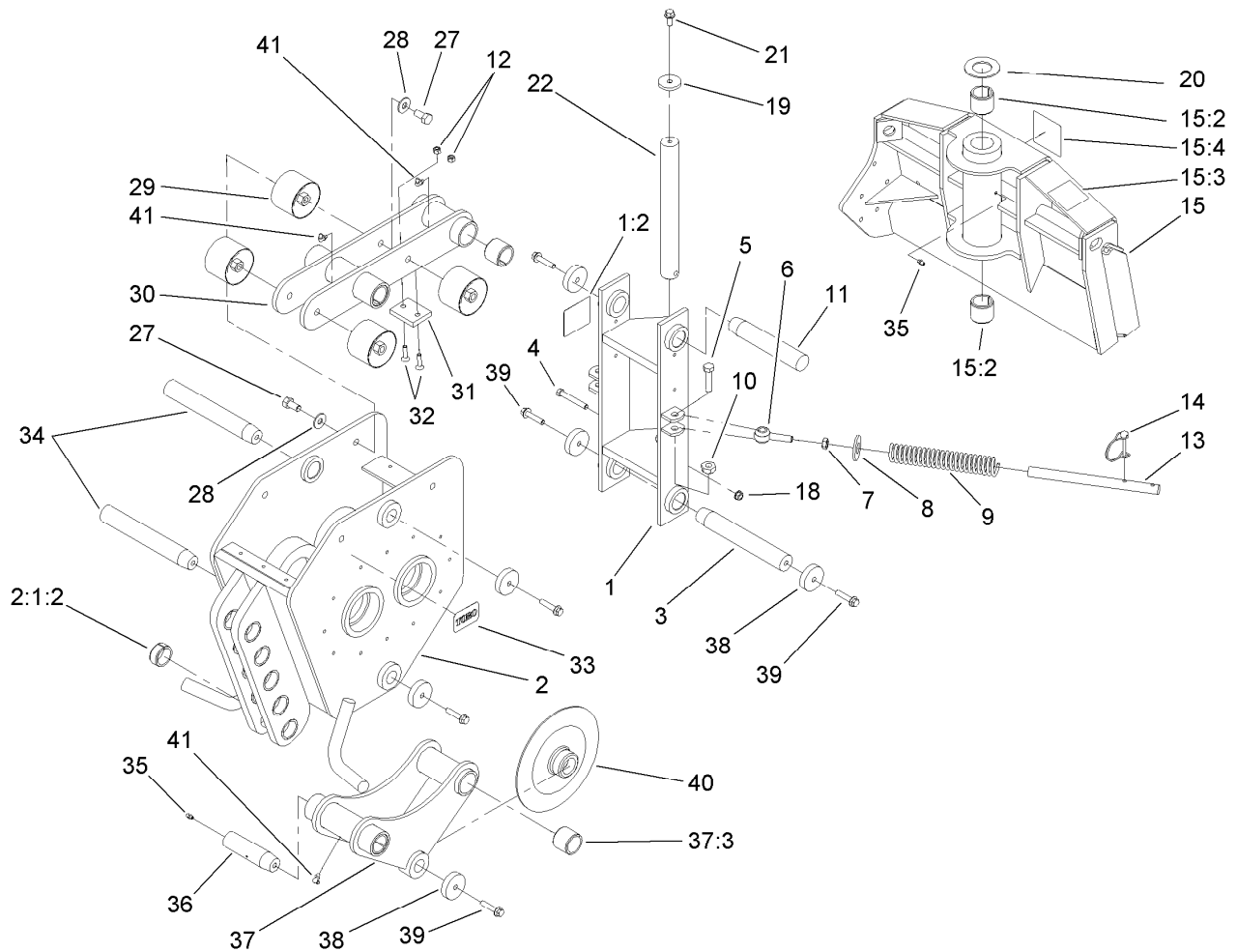
STD: standard

TAP: self tapping

TTH: torx truss head

Contents

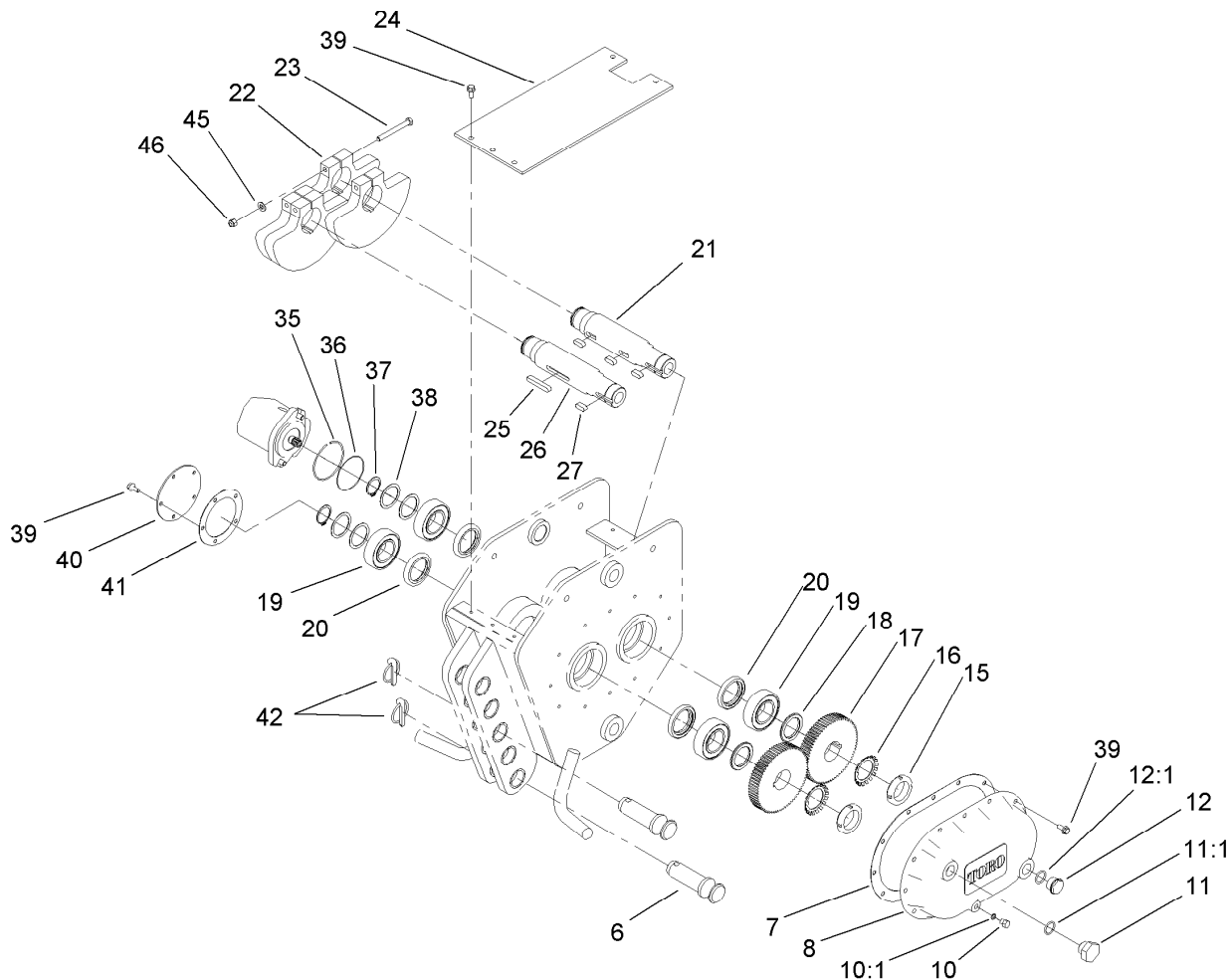
Quick Attach and Frame Assembly	4
Plow Head Assembly	5
Indicating Lever Assembly	6
Hydraulic Assembly	7
Optional Blade and Puller Assembly	8
1 Inch Puller Assembly No. 100-6285	9
1.5 Inch Puller Assembly No. 100-6290	10
2 Inch Puller Assembly No. 100-6294	11
Chuted Blade Assembly No. 104-0640	12



Quick Attach and Frame Assembly

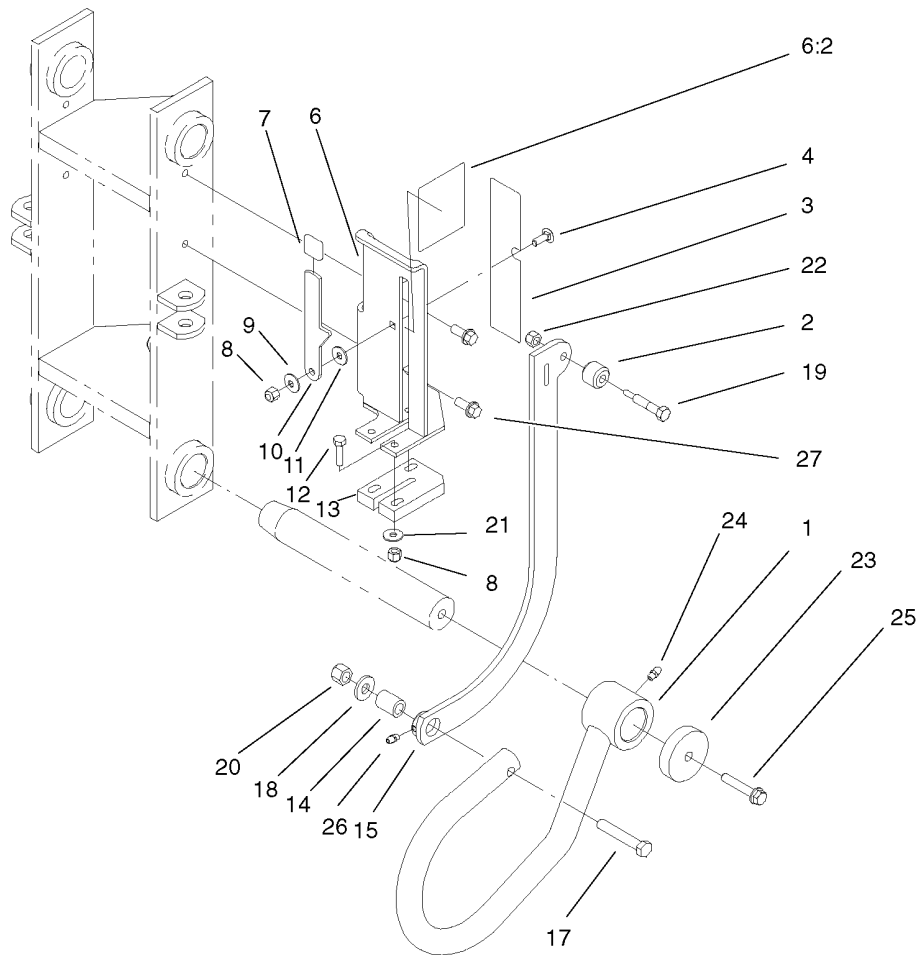
Ref.	Part Number	Qty.	Description	Ref.	Part Number	Qty.	Description
1	112-2796	1	Clevis ASM	19	110-9981	1	Washer-Plain
1:2	100-4650	1	Decal-Warning	20	99-2707	1	Washer
2	104-8429-03	1	Frame ASM	21	3234-25	1	Screw-HHF
2:1:2	99-2740	10	Bushing-Tension ●	22	112-2795	1	Pin
3	99-8646	1	Pin-Tapered	27	3213-1	8	Screw-HH
4	104-6564	1	Screw-HH	28	3256-40	8	Washer-Flat
5	325-8	2	Screw-HH	29	99-2693	4	Mount-Sandwich
6	99-2695	2	Rod End	30	99-2715-03	1	Link ASM
7	3220-5	2	Nut-Jam	31	99-2653	1	Pad-Stop
8	99-2659	2	Washer	32	32108-103	2	Screw-FH
9	99-2686-03	2	Spring	33	92-7981	2	Decal
10	32146-13	2	Nut-Lock	34	99-2719	2	Pin-Tapered
11	99-2720	1	Pin-Tapered	35	302-5	2	Fitting-Grease
12	3296-29	2	Nut-Lock, NI	36	99-2722	1	Pin-Tapered
13	99-2725	2	Rod-Threaded	37	99-2735-03	1	Link ASM
14	100-1663	2	Pin-Hitch	37:3	99-2713	4	Bushing-Tension
15	112-2779	1	Qtach ASM	38	84-1580	5	Washer-Clutch
15:2	99-2713	2	Bushing-Tension	39	3234-19	5	Screw-HHF
15:3	100-4649	1	Decal-Danger	40	99-2726-03	1	Coulter
15:4	98-3269	1	Decal	41	302-40	5	Fitting-Grease
18	3290-357	1	Nut-HHF, Whiz				

● Not serviced separately



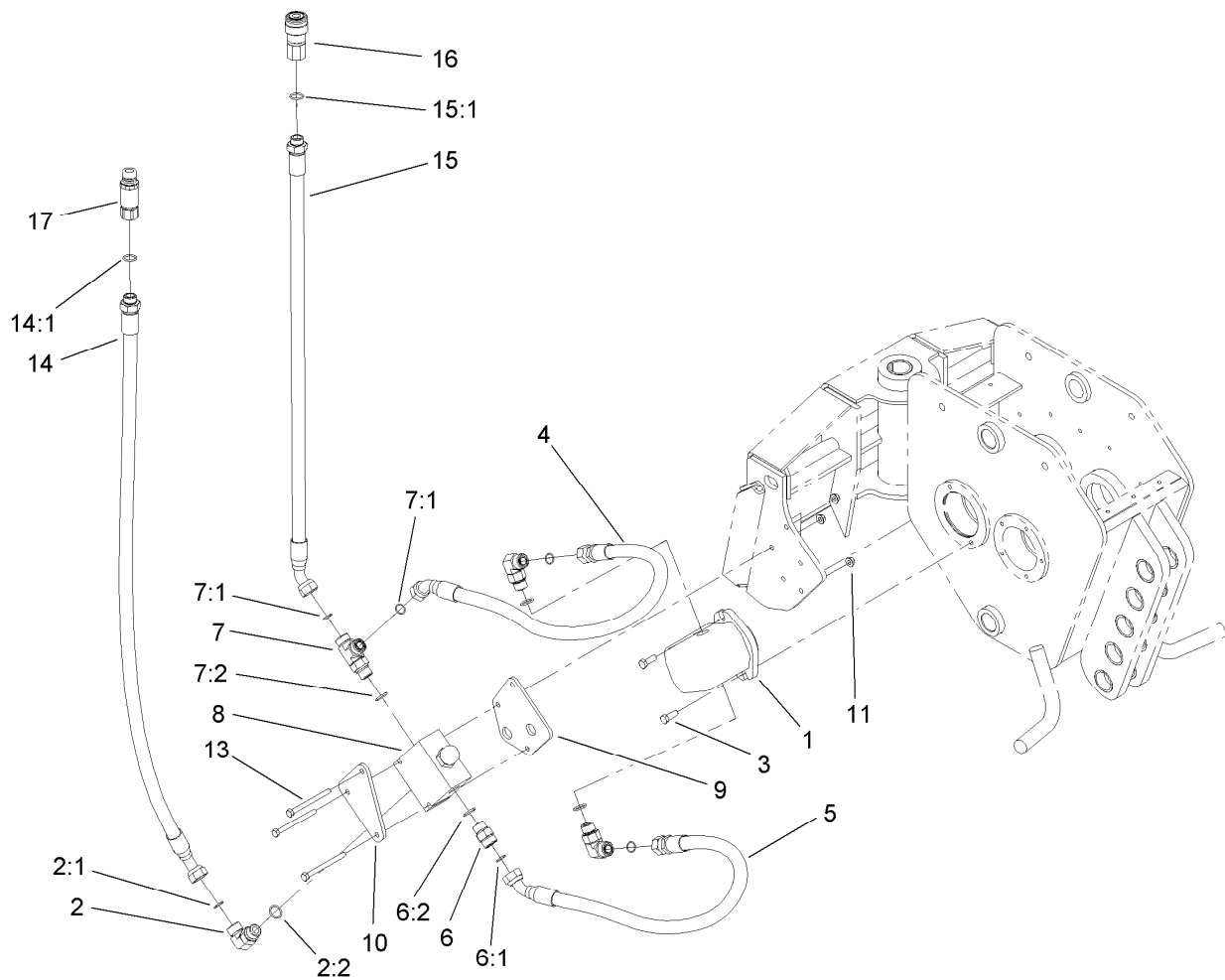
Plow Head Assembly

<i>Ref.</i>	<i>Part Number</i>	<i>Qty.</i>	<i>Description</i>	<i>Ref.</i>	<i>Part Number</i>	<i>Qty.</i>	<i>Description</i>
6	104-5992	2	Pin-Blade	22	99-2673-03	4	Weight-Counter
7	99-2744	1	Gasket	23	323-15	4	Screw-HH
8	99-2723-03	1	Cover	24	99-2699-03	1	Plate-Top
10	353-512	1	Plug	25	99-2675	1	Key-Long
10:1	237-78	1	O-Ring	26	99-2671	1	Shaft
11	354-74	1	Plug-HH	27	99-2674	4	Key-Short
11:1	237-81	1	O-Ring	35	99-2746	1	Ring-Pilot
12	69-1170	1	Glass-Sight	36	237-167	1	O-Ring
12:1	237-81	1	O-Ring	37	32151-95	2	Ring-Retaining
15	99-2706	2	Nut	38	99-2654	4	Washer-Thrust
16	99-2708	2	Retainer-Nut	39	100-1668	22	Screw-Flange
17	99-2676	2	Gear	40	99-2724-03	1	Plate-Cover
18	99-2677	2	Spacer	41	99-2745	1	Gasket
19	99-2670	4	Bearing-Roller, Spherical	42	283-71	2	Pin-Lynch
20	99-2714	4	Seal-Oil	45	3256-24	4	Washer-Flat
21	99-2672	1	Shaft-Splined	46	3296-39	4	Nut-Lock, NI



Indicating Lever Assembly

<i>Ref.</i>	<i>Part Number</i>	<i>Qty.</i>	<i>Description</i>	<i>Ref.</i>	<i>Part Number</i>	<i>Qty.</i>	<i>Description</i>
1	99-8644-03	1	Rod ASM	14	100-1654	1	Spacer
2	100-1657	1	Nylon-Stop	15	100-1667-03	1	Indicator Bar ASM
3	99-8609	1	Decal-Indicator	17	323-47	1	Screw-HH
4	3229-28	1	Screw-CARR	18	3256-3	1	Washer-Flat
6	100-1665	1	Plate-Indicator	19	100-1656	1	Screw-Special
6:2	100-4650	1	Decal-Warning	20	3296-39	1	Nut-Lock, NI
7	100-1655	1	Grip-Handle	21	3256-2	3	Washer-Flat
8	3296-16	4	Nut-Lock, NI	22	3296-47	1	Nut-Lock, NI
9	3290-436	1	Washer-Belleville	23	84-1580	1	Washer-Clutch
10	100-1653-03	1	Lever-Indicator	24	302-40	1	Fitting-Grease
11	3290-388	1	Washer	25	3234-19	1	Screw-HHF
12	321-8	3	Screw-HH	26	302-5	1	Fitting-Grease
13	100-1652	1	Block-Bearing	27	100-1668	2	Screw-Flange

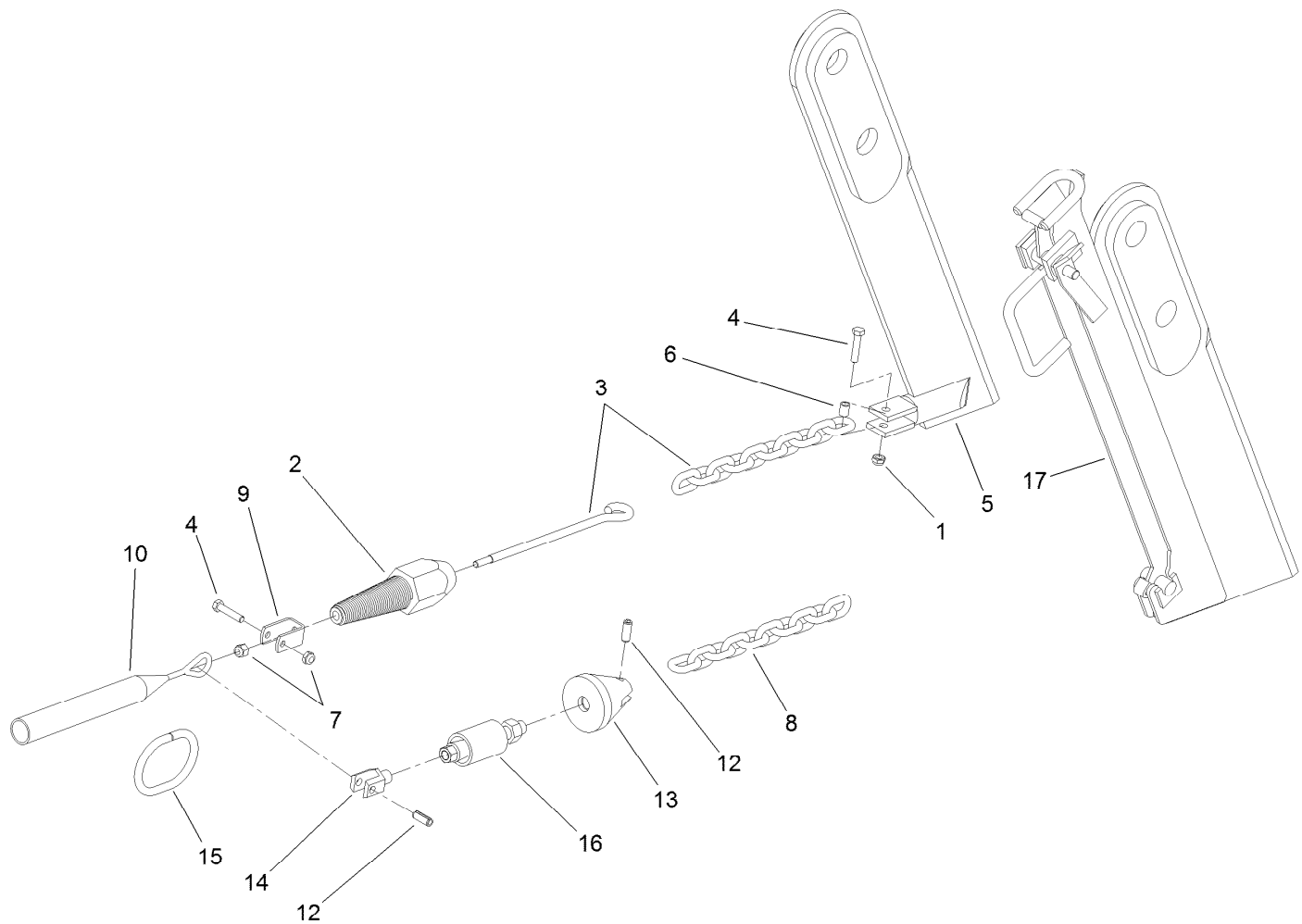


Hydraulic Assembly

<i>Ref.</i>	<i>Part Number</i>	<i>Qty.</i>	<i>Description</i>
1	99-2683	1	Motor-HYD
1:1	99-8608	1	Seal Kit ●
2	340-17	3	Fitting-HYD, 90 DEG
2:1	237-65	1	O-Ring
2:2	237-80	1	O-Ring
3	323-6	2	Screw-HH
4	112-2766	1	HYD Hose ASM
5	105-4333	1	HYD Hose ASM
6	340-7	1	Adapter
6:1	237-65	1	O-Ring
6:2	237-80	1	O-Ring
7	340-22	1	Fitting-HYD, Tee
7:1	237-65	2	O-Ring
7:2	237-80	1	O-Ring

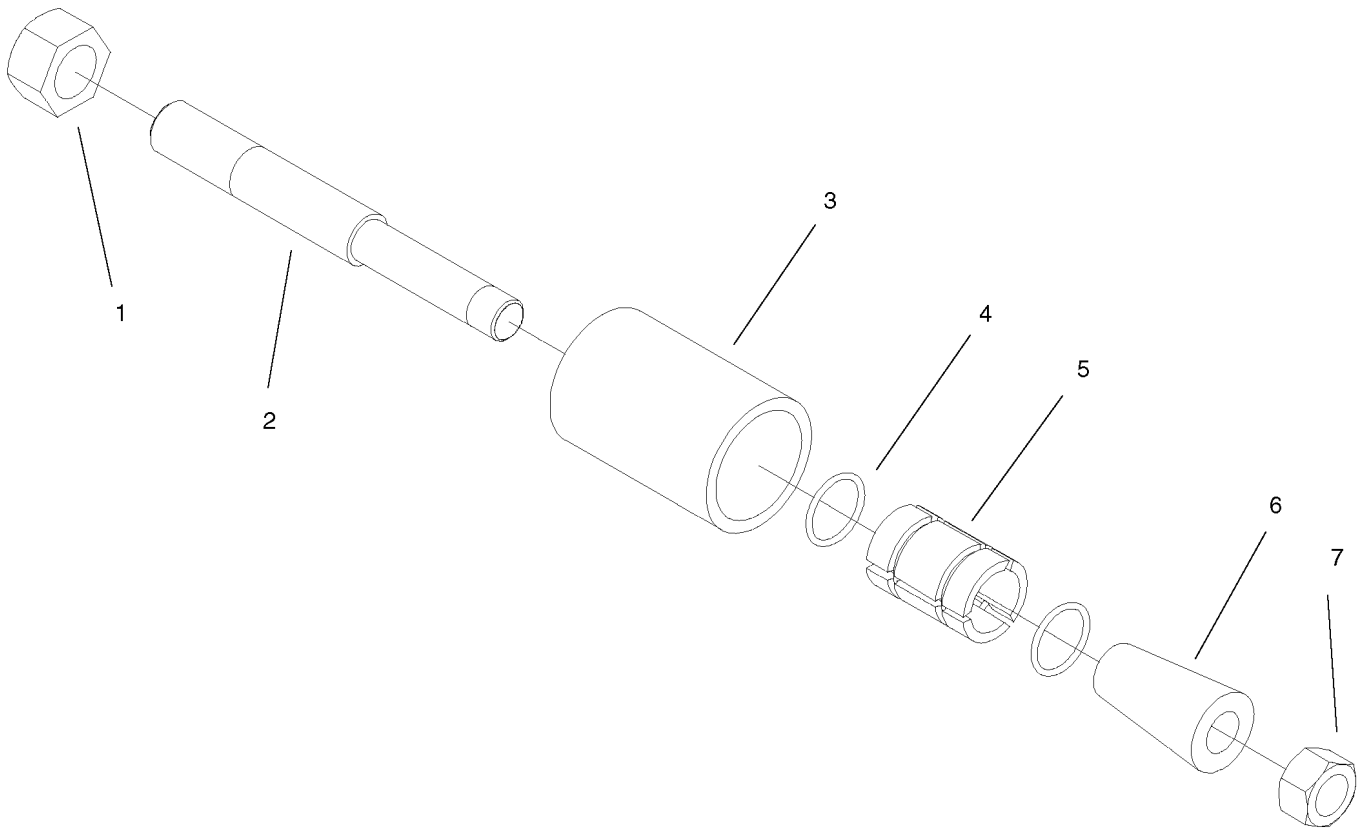
<i>Ref.</i>	<i>Part Number</i>	<i>Qty.</i>	<i>Description</i>
8	112-4882	1	Flow Valve ASM
9	112-4939-03	1	Plate-Spacer, Valve
10	112-2776-03	1	Plate-Clamp
11	32128-35	3	Nut-HF
13	3235-23	3	Screw
14	112-2768	1	HYD Hose ASM
14:1	237-80	1	O-Ring
15	112-2769	1	HYD Hose ASM
15:1	237-80	1	O-Ring
16	104-6134	1	Coupler-Face, Flush
16:1	105-8396	1	Seal Kit ●
17	100-4701	1	Nipple-Connect, Pressure
17:1	100-6120	1	Seal Kit ●

● Not illustrated



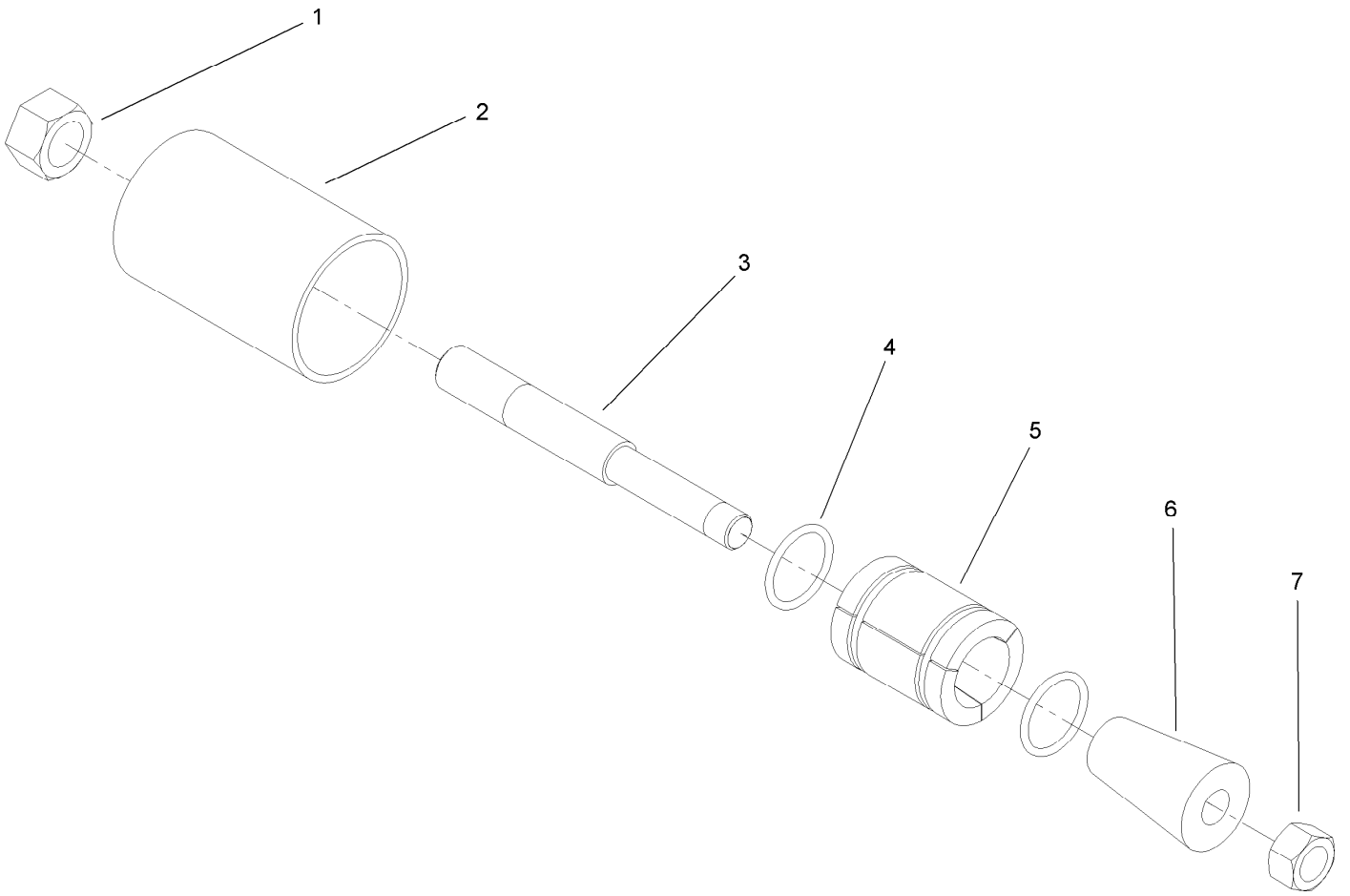
Optional Blade and Puller Assembly

<i>Ref.</i>	<i>Part Number</i>	<i>Qty.</i>	<i>Description</i>	<i>Ref.</i>	<i>Part Number</i>	<i>Qty.</i>	<i>Description</i>
1	3296-69	1	Nut-Lock NI	9	100-1664	1	Clevis
2	104-0646	1	Puller-Pipe	10	100-1662	1	Basket-Grip (1.25-1.5)
3	100-0608	1	Chain ASM	10	100-1661	1	Basket-Grip (.75-1.25)
4	322-7	1	Screw-HH	12	32121-41	2	Pin-Roll (3/8 X 1)
5	106-7646-03	1	Plow Blade ASM (.38 X 12)	13	100-6337	1	Bullet-Puller
5	99-2682-03	1	Plow Blade ASM (.25 X 12)	14	100-6338	1	Adapter-Chain
5	99-8600-03	1	Plow Blade ASM (.5 X 18)	15	100-0609	1	Link-Wire
5	99-8647-03	1	Plow Blade ASM (.38 X 12)	16	100-6285	1	Puller ASM (1 Inch)
6	99-8611	1	Spacer	16	100-6294	1	Puller ASM (2 Inch)
7	3296-39	1	Nut-Lock, NI	16	100-6290	1	Puller ASM (1.5 Inch)
8	99-8631	1	Chain	17	104-0640	1	Chuted Blade ASM



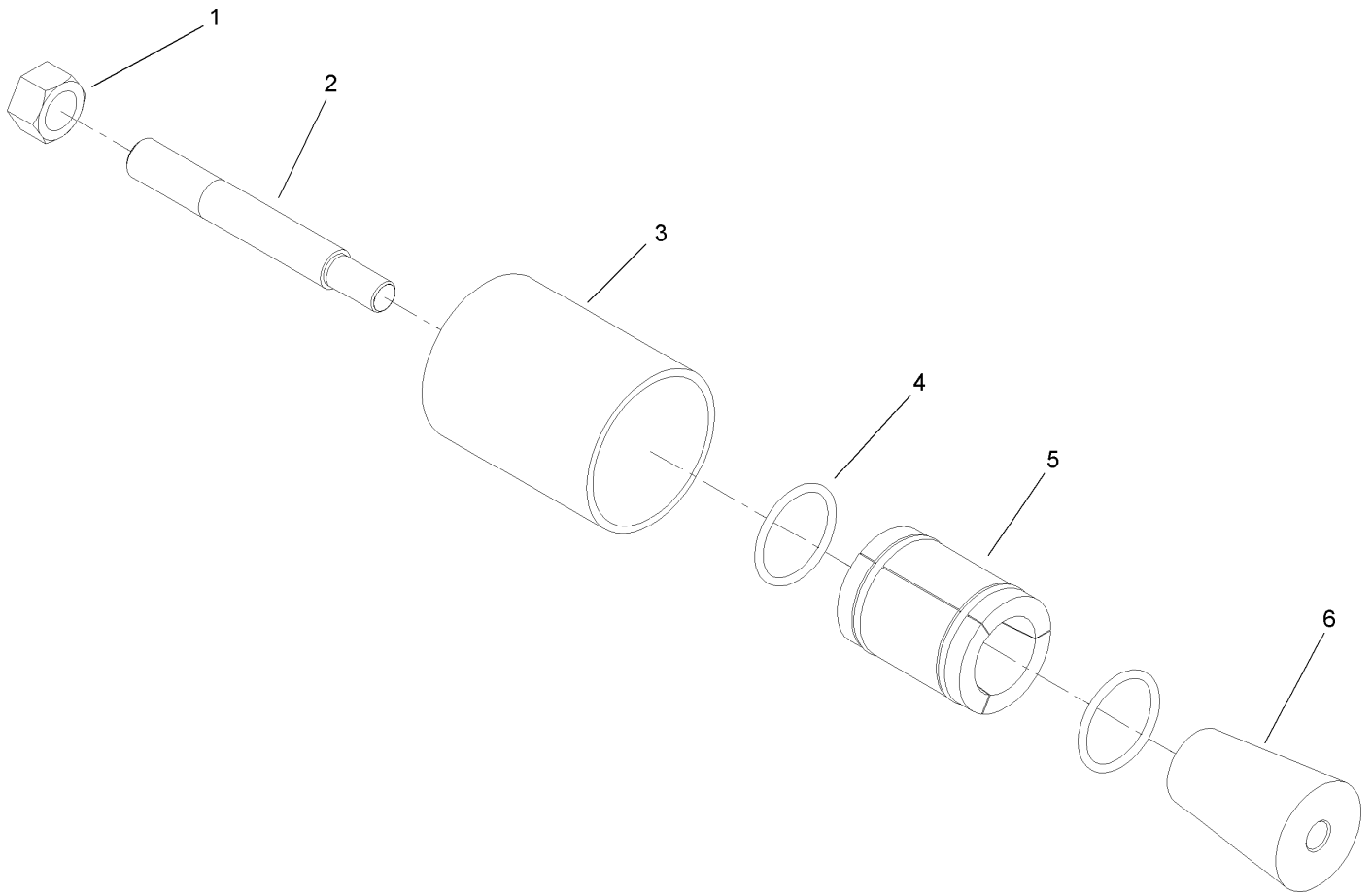
1 Inch Puller Assembly No. 100-6285

<i>Ref.</i>	<i>Part Number</i>	<i>Qty.</i>	<i>Description</i>
1	3219-6	1	Nut-Hex
2	100-6286	1	Rod-Puller
3	100-6289	1	Grip-Outer
4	237-145	2	O-Ring
5	100-6288	3	Grip-Inner
6	100-6287	1	Cone-Puller
7	3219-5	1	Nut-Hex



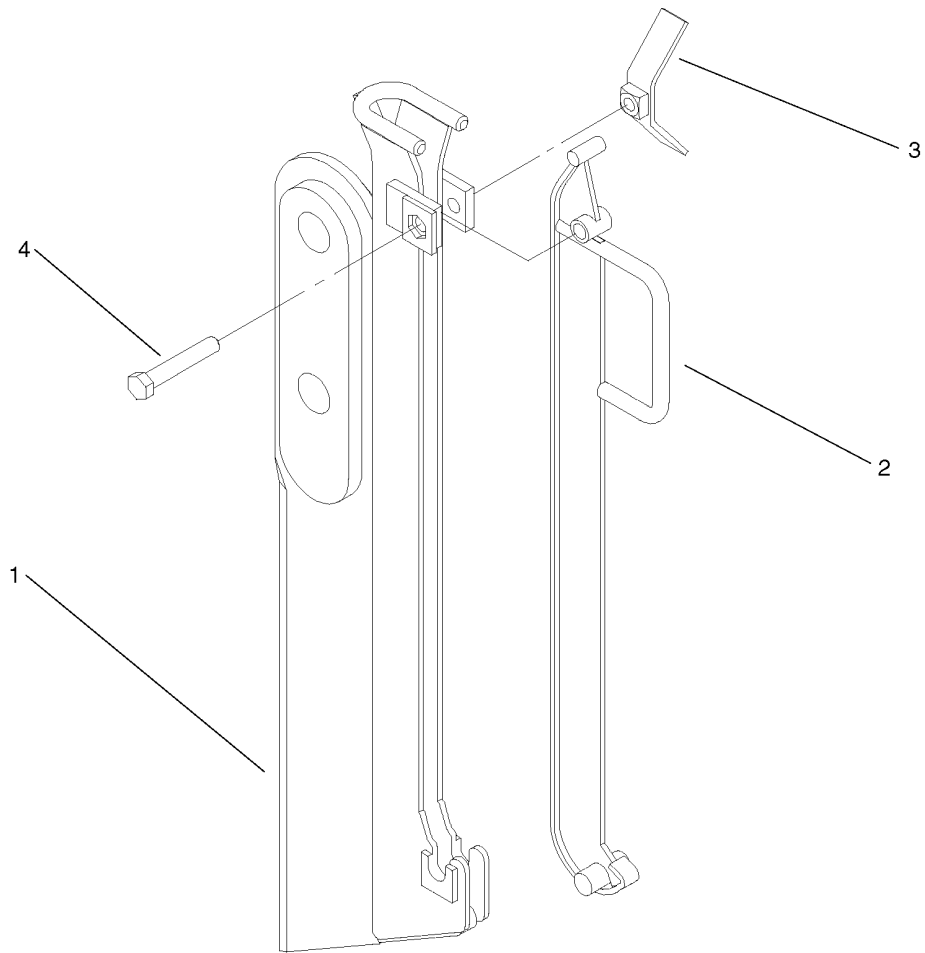
1.5 Inch Puller Assembly No. 100-6290

<i>Ref.</i>	<i>Part Number</i>	<i>Qty.</i>	<i>Description</i>
1	3219-6	1	Nut-Hex
2	100-6286	1	Rod-Puller
3	100-6293	1	Grip-Outer
4	237-179	2	O-Ring
5	100-6292	3	Grip-Inner
6	100-6291	1	Cone-Puller
7	3219-5	1	Nut-Hex



2 Inch Puller Assembly No. 100-6294

<i>Ref.</i>	<i>Part Number</i>	<i>Qty.</i>	<i>Description</i>
1	3219-6	1	Nut-Hex
2	100-6295	1	Rod-Puller
3	100-6298	1	Grip-Outer
4	237-187	2	O-Ring
5	100-6297	3	Grip-Inner
6	100-6296	1	Cone-Puller



Chuted Blade Assembly No. 104-0640

<i>Ref.</i>	<i>Part Number</i>	<i>Qty.</i>	<i>Description</i>
1	104-2664	1	Blade-Chuted ●
2	104-2665	1	Guide-Blade
3	104-2666	1	Nut-Blade
4	325-12	1	Screw-HH

● Not serviced separately

Notes:

Notes:

Notes:



Count on it.