



Count on it.

Parts Catalog

Foam Marker Kit

**Multi-Pro® 1200, 1250, 5600 and 5700 Turf
Sprayers and Workman® 200 Spray Systems**

Model No. 41228—Serial No. 260000001 and Up

Ordering Replacement Parts

To order replacement parts, please supply the part number, the quantity, and the description of each part desired.

Understanding Reference Numbers

Each identified part in an illustration has a reference number. The reference number for a part also appears in the parts list, along with other information about the part.

This catalog uses two special reference number formats, one to indicate parts in a service assembly and another to indicate the quantity of a given part in an illustration.

Service Assembly Reference Numbers

Parts in service assemblies have reference numbers in the form a:b. The a represents the reference number of the entire service assembly and the b represents a sequential number unique to each part within the service assembly.

For example, a wheel assembly might be identified by reference number 6, the tire by 6:1, the valve by 6:2, and the wheel by 6:3. When you order the assembly identified by reference number 6, you receive all parts identified by reference numbers 6:1, 6:2, and 6:3. However, you may also order any part individually. Reference numbers of this type appear in illustration and in parts lists.

Reference Numbers Indicating Quantity

In an illustration, if a reference number indicates more than one part, the reference number has the form nX y. The n represents the quantity of the part, the X is the multiplication symbol, and the y represents the reference number.

For example, in an illustration, the reference number 2X 37 means that two of the parts identified by reference number 37 are indicated.

List of Abbreviations

AR: as required

ASM: assembly

BBC: blade brake control

BHTF: button head thread forming

CARR: carriage

CCW: counter clockwise

CW: clockwise

DEG: degrees

DPA: Dual Point Adjustment

ECM: electronic control module

EXT: external

FH: flat head

GA: gauge

HD: heavy-duty

HF: hex flange

HH: hex head

HHF: hex head flange

HHFTF: hex head flange thread forming

HJ: hex jam

HLH: hex lag head

HOC: height-of-cut

HSBH: hex socket button head

HSFH: hex socket flat head

HSH: hex socket head

HWH: hex washer head

HWTF: hex washer head thread forming

HYD: hydraulic

LH: left hand

LP: Liquid Propane

NI: nylon insert

NPTF: national pipe thread fine

PFH: phillips flat head

PPH: phillips pan head

PPHTF: phillips pan head thread forming

PRH: phillips round head

PTH: phillips truss head

PTO: power-take-off

RH: right hand

ROPS: roll-over protection system

RRB: rear roller brush

SFH: slotted fillister head

SHH: slotted hex head

SHWH: slotted hex washer head

SPH: slotted pan head

SQH: square head

SRH: slotted round head

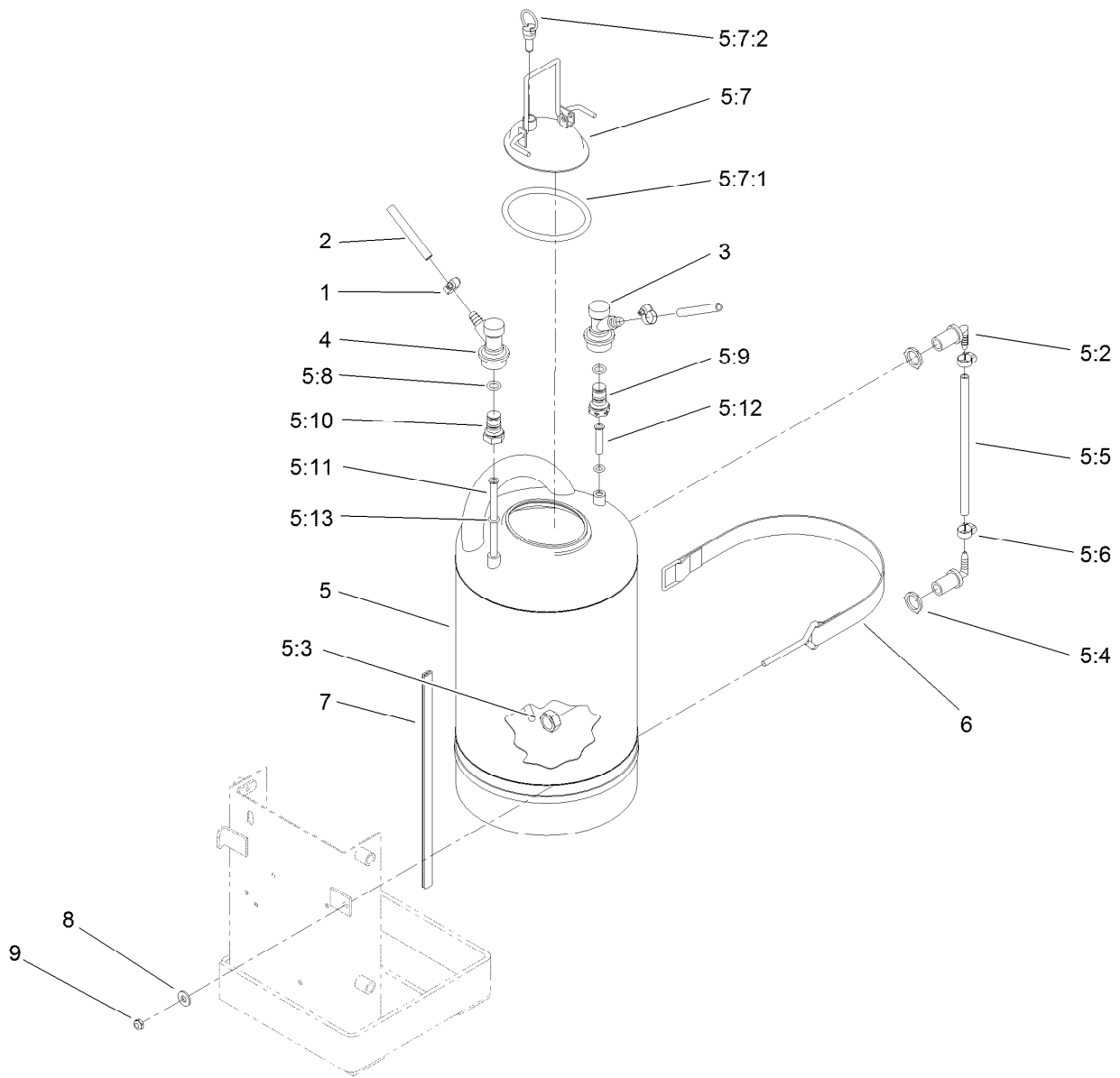
STD: standard

TAP: self tapping

TTH: torx truss head

Contents

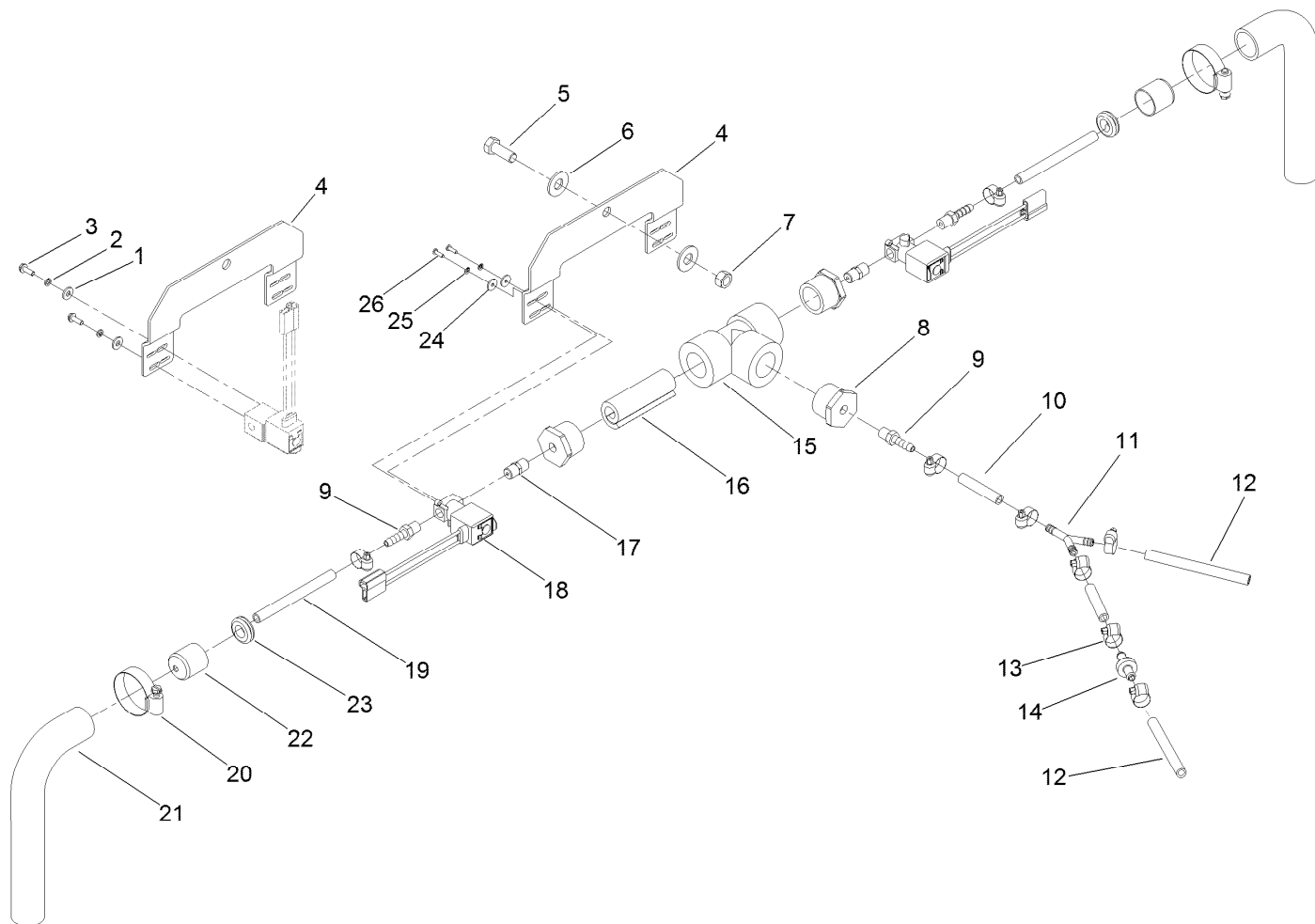
- Sprayer Tank Assembly 4
- Mixer and Boom Solenoid Assembly 5
- Solenoid Valve Assembly 6
- Frame and Compressor Assembly 7
- Electrical Component Assembly 8



Sprayer Tank Assembly

Ref.	Part Number	Qty.	Description
1	2412-108	2	Clamp-Worm
2	94-7258	2	Hose-Vinyl, Clear
3	94-7193	1	Connector-Quick
4	94-7194	1	Connector-Quick
5	94-7253	1	Tank ASM
5:2	94-7254	2	Barb-Hose
5:3	94-7255	2	Nut-Fitting
5:4	94-7256	2	Washer
5:5	94-7257	1	Hose-Vinyl, Clear
5:6	2412-108	2	Clamp-Worm
5:7	94-8545	1	Lid ASM
5:7:1	94-8544	1	Gasket-Lid

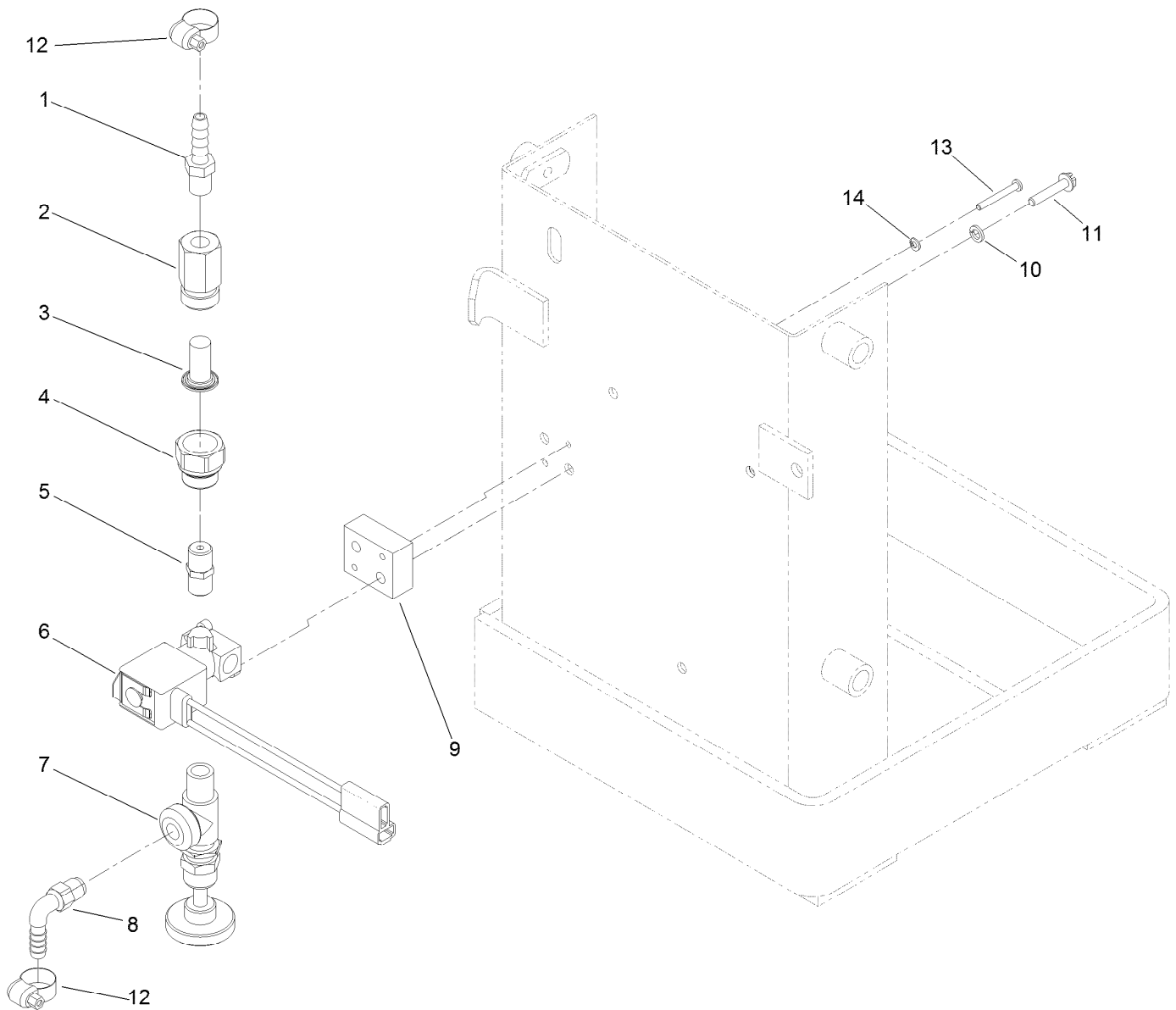
Ref.	Part Number	Qty.	Description
5:7:2	94-8546	1	Valve
5:8	94-8547	2	O-Ring
5:9	94-8548	1	Plug ASM
5:10	94-8549	1	Plug ASM
5:11	94-8550	1	Tube-Inlet
5:12	94-8551	1	Tube-Dip
5:13	94-8552	1	O-Ring
6	762035	1	Strap ASM
7	94-7259	2	Trim
8	3256-2	1	Washer-Flat
9	3296-56	1	Nut-Lock, NI



Mixer and Boom Solenoid Assembly

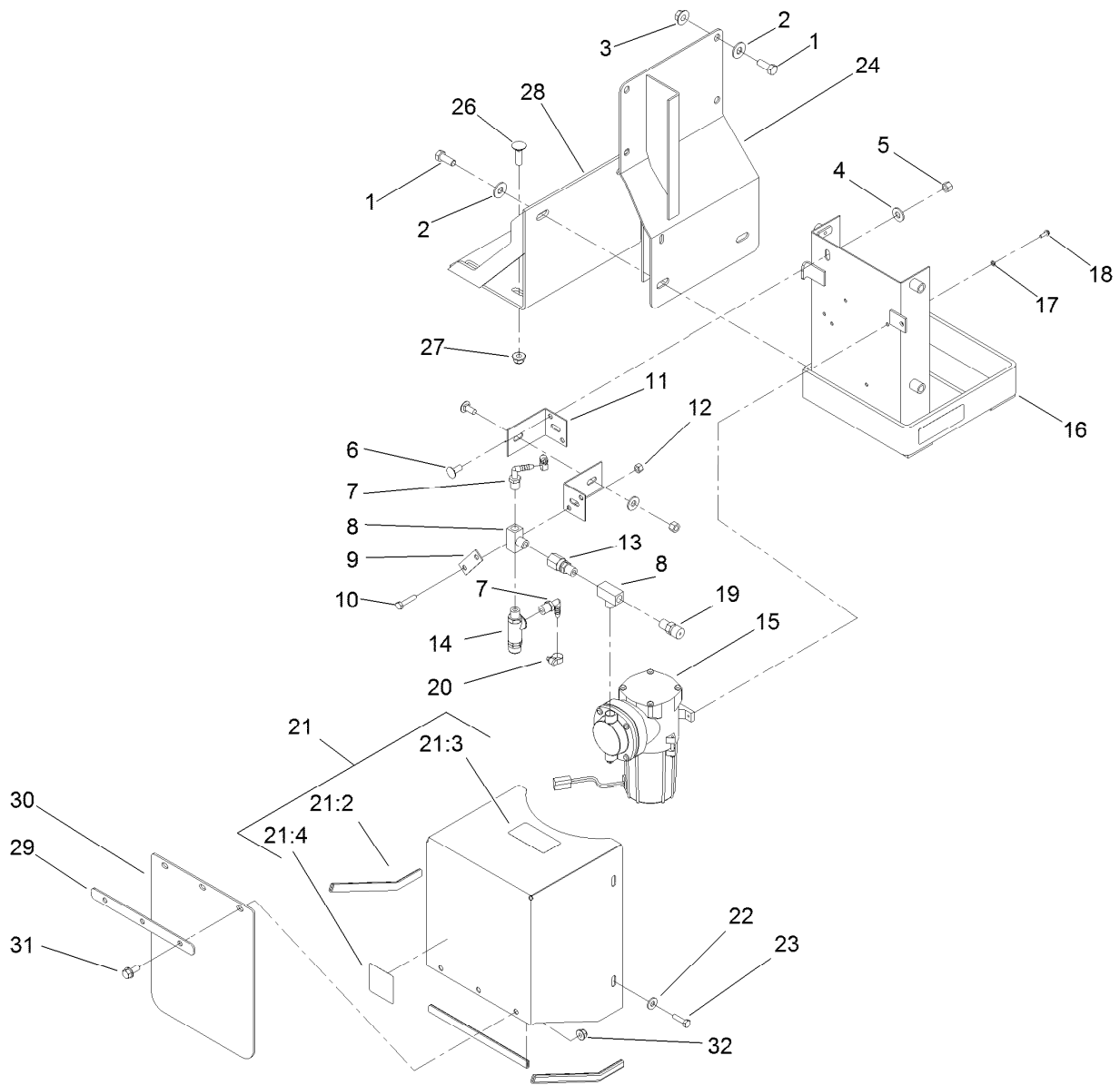
<i>Ref.</i>	<i>Part Number</i>	<i>Qty.</i>	<i>Description</i>
1	3256-14	4	Washer-Flat
2	3253-17	4	Washer-Lock
3	32144-87	4	Screw-HWHTF
4	110-5058-03	1	Bracket-Mixer
5	323-6	1	Screw-HH
6	3256-4	2	Washer-Flat
7	32153-2	1	Nut-Lock, Side
8	94-7225	3	Plug
9	94-7220	3	Hose-Barb
10	94-7250	2	Hose-Vinyl, Clear
11	94-7223	1	Hose-Barb
12	94-7247	2	Hose-Vinyl, Clear
13	2412-108	8	Clamp-Worm

<i>Ref.</i>	<i>Part Number</i>	<i>Qty.</i>	<i>Description</i>
14	94-7196	1	Valve
15	41305	1	Tee
16	94-7227	1	Filter
17	94-7224	2	Nipple
18	94-7191	2	Solenoid Valve ASM
19	110-5056	2	Hose-Vinyl
20	2412-111	2	Clamp
21	93-0611	2	Extension-Hose
22	94-7195	2	Cap
23	93-5108	2	Grommet-Rubber
24	3269-10	4	Washer-Back
25	119-9376	4	Washer-Lock, Spring
26	119-9375	4	Screw-PPH



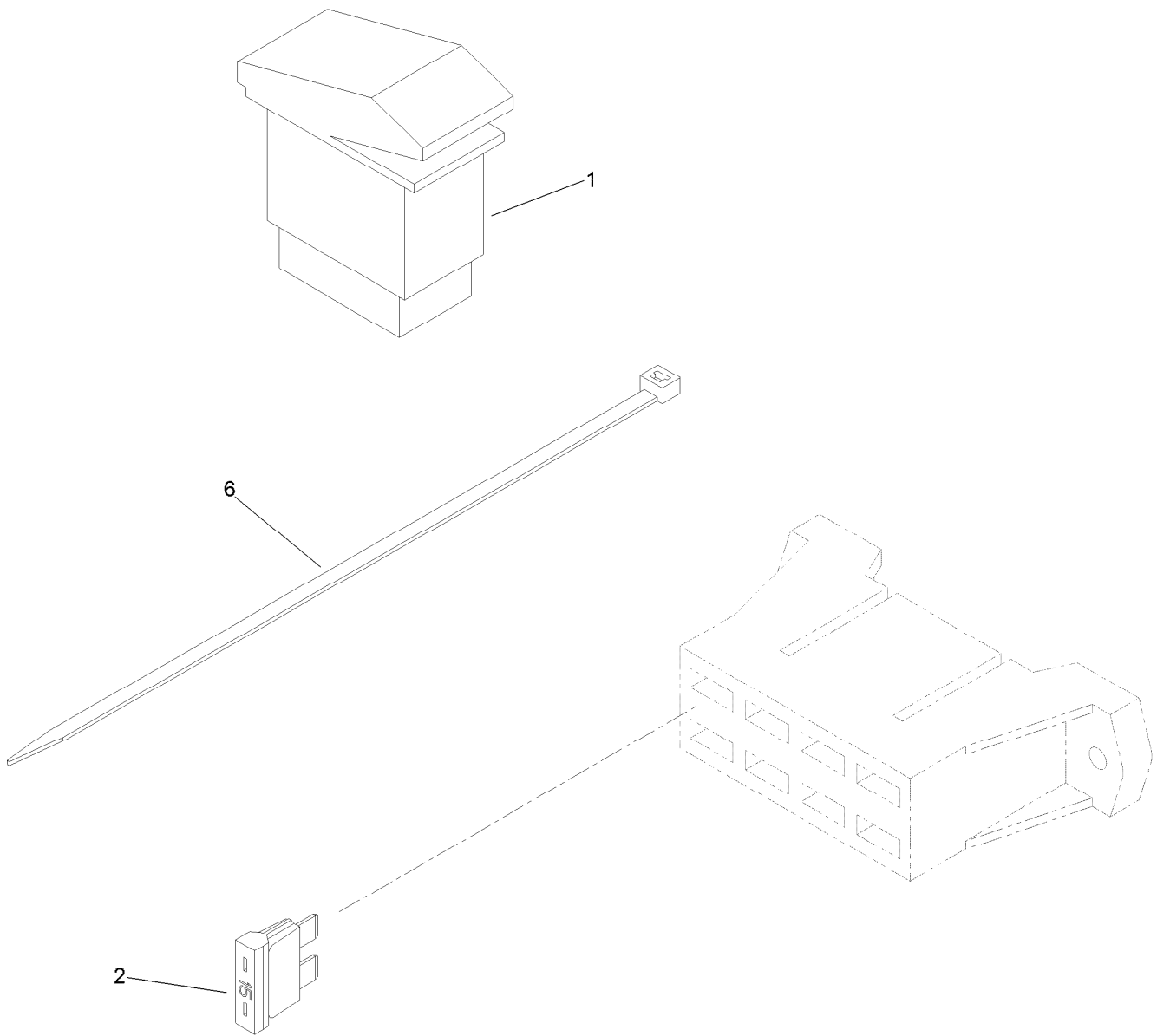
Solenoid Valve Assembly

<i>Ref.</i>	<i>Part Number</i>	<i>Qty.</i>	<i>Description</i>
1	94-7220	1	Hose-Barb
2	94-7229	1	Body-Nozzle
3	94-7228	1	Strainer
4	94-7230	1	Adapter-Nozzle
5	94-7224	1	Nipple
6	94-7191	1	Solenoid Valve ASM
7	94-7226	1	Valve
8	94-7222	1	Barb-Hose
9	94-7269	1	Spacer-Valve
10	3253-17	2	Washer-Lock
11	32105-29	2	Screw-SHWH
12	2412-108	2	Clamp-Worm
13	120-7633	2	Screw-PPH
14	119-9376	2	Washer-Lock, Spring



Frame and Compressor Assembly

<i>Ref.</i>	<i>Part Number</i>	<i>Qty.</i>	<i>Description</i>	<i>Ref.</i>	<i>Part Number</i>	<i>Qty.</i>	<i>Description</i>
1	323-6	4	Screw-HH	18	32144-87	3	Screw-HWHTF
2	3256-4	4	Washer-Flat	19	94-7197	1	Valve-Relief
3	32128-43	2	Nut-Flange	20	2412-108	2	Clamp-Worm
4	3256-3	2	Washer-Flat	21	110-5060	1	Cover ASM
5	3296-29	2	Nut-Lock, NI	21:2	106-1043	3	Trim-Strip
6	3230-23	2	Screw-CARR	21:3	94-7275	1	Decal-Valve, Relief
7	94-7221	2	Barb-Hose	21:4	94-7287	1	Decal-Valve, Adjustment
8	94-7219	2	Fitting-Tee	22	3256-2	4	Washer-Flat
9	94-7268	1	Strap-Support	23	321-6	4	Screw-HH
10	321-8	2	Screw-HH	24	106-1296-03	1	Foam Marker Bracket ASM
11	94-7267-03	2	Bracket-Support	26	3231-25	4	Screw-CARR
12	3296-56	2	Nut-Lock, NI	27	104-8301	4	Nut-Flange, NI
13	94-7199	1	Valve-Check, Inline	28	108-3561-03	1	Bracket ASM
14	94-7198	1	Valve-Relief, Side Outlet	29	110-5061-03	1	Bracket-Mud Flap
15	94-7200	1	Compressor ASM	30	110-5062	1	Flap-Mud
16	94-7260-03	1	Tank Bracket ASM	31	3234-5	3	Screw-HHF
17	3253-17	3	Washer-Lock	32	104-8300	3	Nut-Flange, NI



Electrical Component Assembly

<i>Ref.</i>	<i>Part Number</i>	<i>Qty.</i>	<i>Description</i>
1	95-8999	2	Switch
2	109355	1	Fuse-Blade, 15 Amp
6	3290-379	13	Tie-Cable

Notes:

Notes:

Notes:



Count on it.