



# 60 and 72 inch Recycler® Kit Z Master® G3 and GrandStand® Mower

Model No. 115-7468

Model No. 115-7469

## Installation Instructions

**Note:** Determine the left and right sides of the machine from the normal operating position.

## Safety

### Side Discharge or Mulch Grass

#### **⚠ WARNING**

Without the grass deflector, discharge cover, or complete grass catcher assembly mounted in place, you and others are exposed to blade contact and thrown debris. Contact with rotating mower blade(s) and thrown debris will cause injury or death.

- Never remove the grass deflector from the mower because the grass deflector routes material down toward the turf. If the grass deflector is ever damaged, replace it immediately.
- Never put your hands or feet under the mower.
- Never try to clear the discharge area or mower blades unless you disengage the power take off (PTO) lever and turn the ignition key to off. Also remove the key and pull the wire off the spark plug(s).

Ensure the mower has the hinged grass deflector that disperses clippings to the side and down toward the turf, while in side discharge mode.

To mulch grass clippings, the baffles must be installed into the mower as shown in the following steps.

# Installation

## Loose Parts

Use the chart below to verify that all parts have been shipped.

Procedure	Description	Qty.	Use
<b>1</b>	No parts required	–	Raise the mower for access.
<b>2</b>	No parts required	–	Prepare the mower.
<b>3</b>	No parts required	–	Remove the existing blades.
<b>4</b>	No parts required	–	Remove the existing baffles.
<b>5</b>	No parts required	–	Drill holes for G3 mower decks
<b>6</b>	Discharge plate Cover plate Carriage bolt, (3/8 x 1-1/4 inches) Carriage bolt, (5/16 x 7/8 inch) Flange nut (small flange), (3/8 inch) Flange nut, (5/16 inch) Flange nut (large flange), (3/8 inch) Carriage bolt, (3/8 x 1 inch)	1 1 2 1 2 1 2 2	Install the discharge plate.
<b>7</b>	Left baffle Center baffle Right baffle Flange nut (small flange), (3/8 inch) Carriage bolt (3/8 x 1 inch) Bolt, (3/8 x 1 inch) Flange nut (large flange), (3/8 inch)	1 1 1 7 6 2 1	Install the baffles.
<b>8</b>	Kickers Carriage bolt (5/16 x 7/8 inch) Lock nut (5/16 inch)	2 4 4	Install the kickers on 72 inch mowers.
<b>9</b>	Recycler blades	3	Install the new blades.
<b>10</b>	No parts required	–	Tighten all fasteners.

# 1

## Raising the Mower for Access (GrandStand Mowers Only)

### No Parts Required

### Procedure

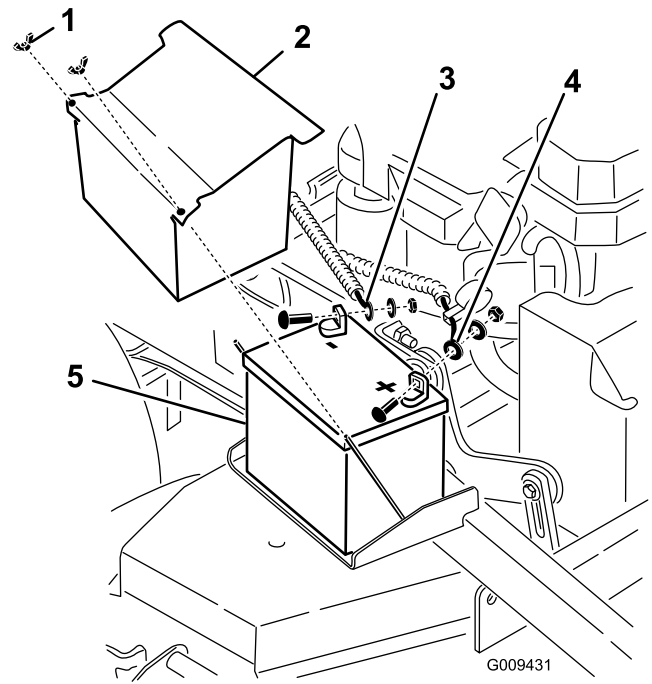
The front of the mower can be raised and supported on its back for access under the machine for maintenance.

### **⚠ DANGER**

The machine could fall onto someone and cause serious injury or death

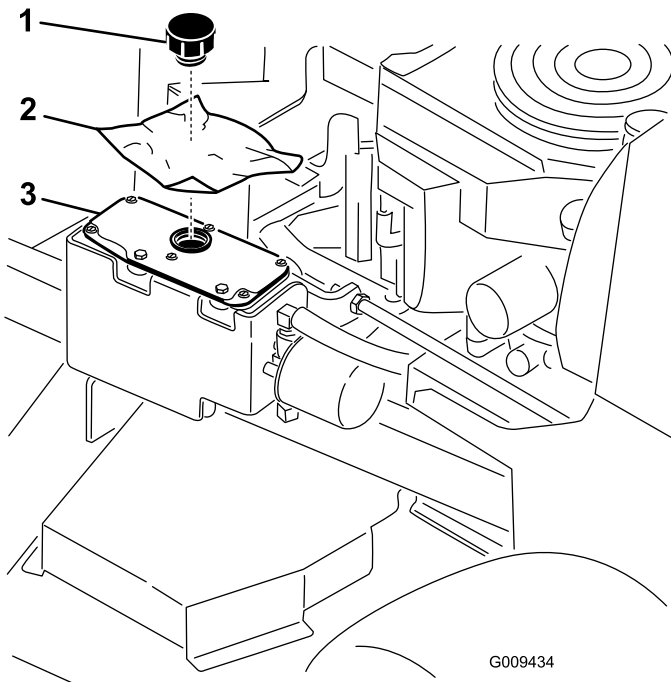
- Always turn the engine off, set the parking brake, and remove the key before performing any maintenance to the mower.
- Use extreme caution when the machine is raised and supported on its back. The blades and moving parts are exposed and could cause injury.
- Use this position only for cleaning, removing blades or baffles and maintenance.

1. Disengage the PTO and set the parking brake.
2. Stop the engine, remove the key, and wait for all moving parts to stop before leaving the operating position.
3. Remove the battery from the machine.
  - A. Lift the black rubber cover on the negative cable. Disconnect the negative battery cable from the negative (-) battery terminal (Figure 1).
  - B. Slide the red terminal boot off the positive (red) battery terminal. Then remove the positive (red) battery cable (Figure 1).
  - C. Remove the battery hold down plate (Figure 1) and remove the battery.



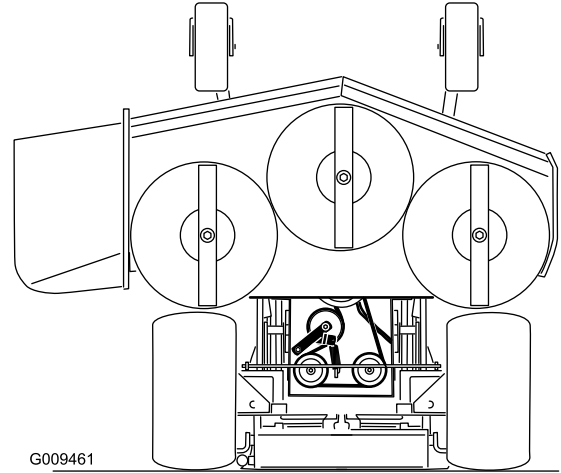
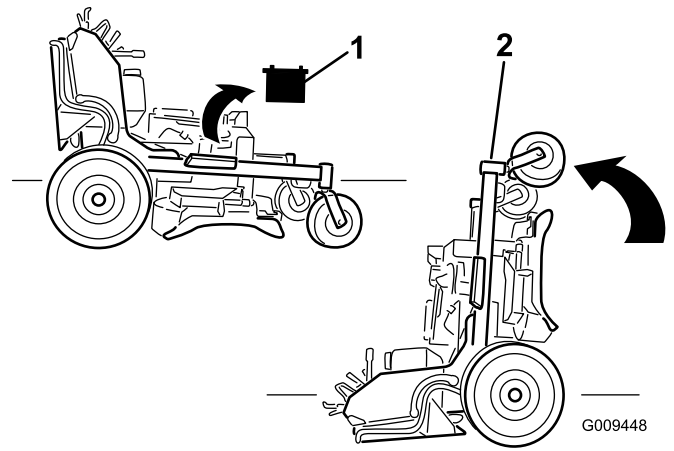
**Figure 1**  
GrandStand Mowers Only

- |                           |                           |
|---------------------------|---------------------------|
| 1. Wing nut               | 4. Positive battery cable |
| 2. Battery cover          | 5. Battery                |
| 3. Negative battery cable |                           |
- 
4. Raise the mower deck to the highest position.
  5. Drain the fuel from the fuel tank. Refer to Draining the Fuel Tank in the *Operator's Manual*.
  6. Remove the cap of the hydraulic tank and place a piece of plastic over the opening and install the hydraulic cap. This will seal the hydraulic tank and prevent it from leaking out.



**Figure 2**  
GrandStand Mowers Only

- 1. Cap
- 2. Piece of plastic
- 3. Hydraulic tank



**Figure 3**  
GrandStand Mowers Only

- 1. Ensure the battery is removed
- 2. With two people, lift the front end of the mower (ensure the mower deck is in the highest position)

# 2

## Preparing the Mower

### No Parts Required

### Procedure

- 1. Thoroughly clean mower deck. All debris must be removed to ensure baffles will fit properly against mower deck.
- 2. Repair all bent or damaged areas of mower deck and replace any missing parts.

# 3

## Removing the Existing Blades

### No Parts Required

### Procedure

Remove the existing blades from the spindles (Figure 4).

**Note:** Save the blades for use when in side discharging mode. Use the blade bolt and washer for installing the recycler blades in Step 4.

### ⚠ WARNING

A blade is sharp. Contact with sharp blade can cause serious personal injury.

Wear gloves or wrap sharp edges of the blade with a rag.

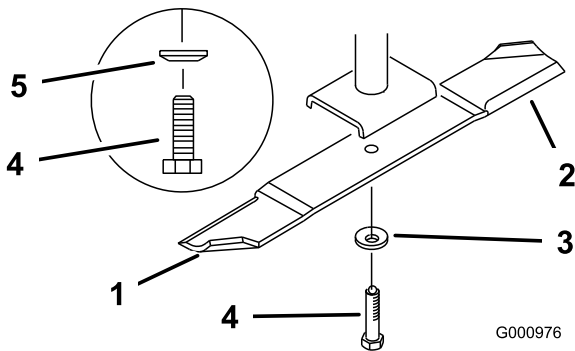


Figure 4

- |                       |                               |
|-----------------------|-------------------------------|
| 1. Sail area of blade | 4. Blade bolt                 |
| 2. Blade              | 5. Cone towards the bolt head |
| 3. Curved washer      |                               |

# 4

## Removing the Existing Baffles

### No Parts Required

### Procedure

**Note:** In the steps below, the bolts are threaded into the mower deck. Remove the nuts first before removing bolts.

1. Remove the flange nuts holding the baffles in place (Figure 5 or Figure 6).
2. Remove the cam lock and washer by unscrewing it from the adjustable flow baffle (Figure 5 or Figure 6).

**Note:** For certain models of mower decks, remove the nut and bolt if no cam lock is present.

3. Remove the six bolts holding the baffles in place (Figure 5 or Figure 6).

**Note:** Save the baffles and hardware for use when changing to side discharging mode.

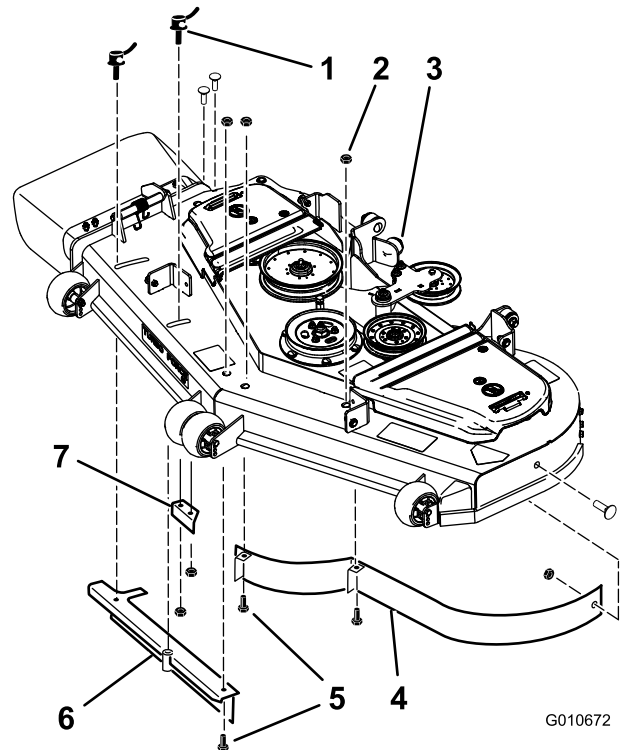
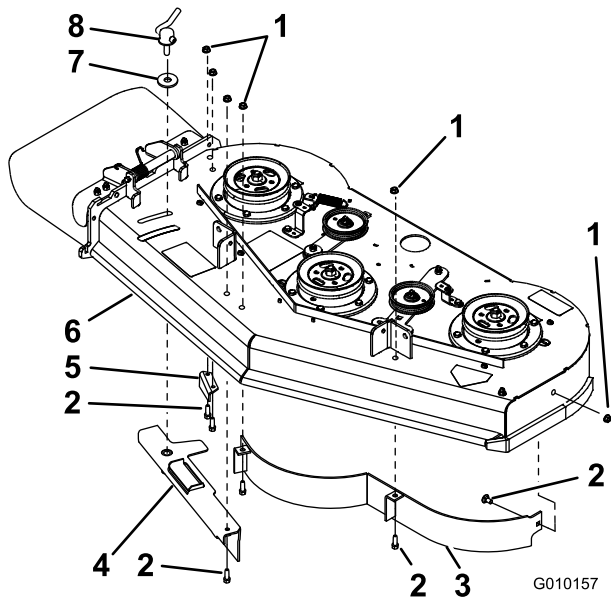


Figure 5

Z Master Mowers Only

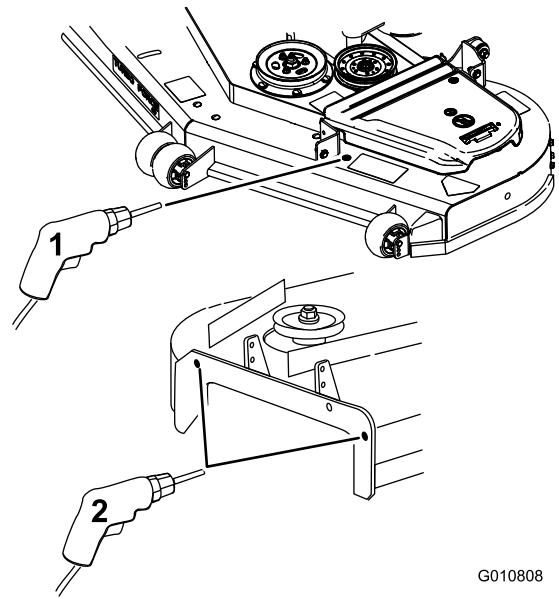
- |                      |                           |
|----------------------|---------------------------|
| 1. Cam lock          | 5. Bolt                   |
| 2. Flange Nut        | 6. Adjustable Flow Baffle |
| 3. Mower deck        | 7. Discharge baffle       |
| 4. Left front baffle |                           |



**Figure 6**

GrandStand Mowers Only

- |                           |                     |
|---------------------------|---------------------|
| 1. Flange Nut             | 5. Discharge baffle |
| 2. Bolt                   | 6. Mower deck       |
| 3. Left front baffle      | 7. Washer           |
| 4. Adjustable Flow Baffle | 8. Cam lock         |



**Figure 7**

1. Drill this hole to 3/8 inch diameter
2. Drill these holes to 7/16 inch diameter

# 5

## Drilling Holes for G3 Mower Decks

### No Parts Required

### Procedure

1. Check the hole diameters in the locations shown in Figure Figure 7.
2. If needed, drill the holes to the specified diameter in the locations shown in Figure Figure 7.

# 6

## Installing the Discharge Plate and Cover Plate

### Parts needed for this procedure:

1	Discharge plate
1	Cover plate
2	Carriage bolt, (3/8 x 1-1/4 inches)
1	Carriage bolt, (5/16 x 7/8 inch)
2	Flange nut (small flange), (3/8 inch)
1	Flange nut, (5/16 inch)
2	Flange nut (large flange), (3/8 inch)
2	Carriage bolt, (3/8 x 1 inch)

### Procedure

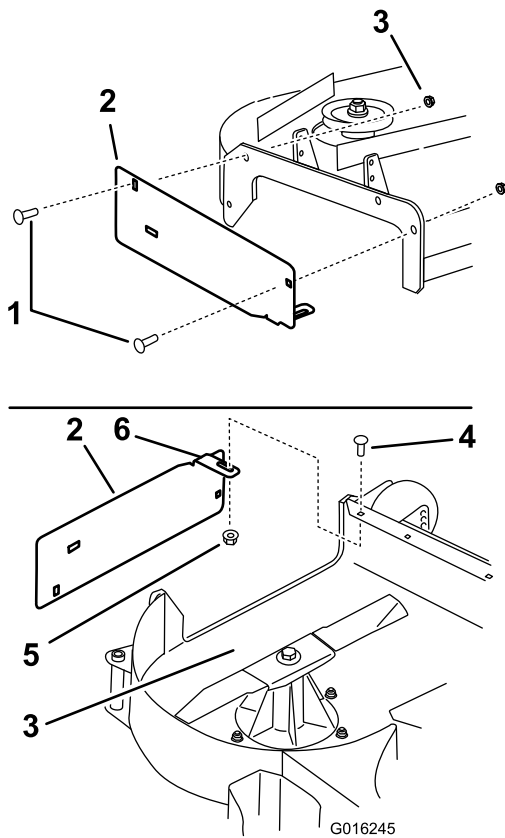
1. Install the discharge plate to the outside of the mounting bracket with 2 carriage bolts (3/8 x 1-1/4 inches) and 2 flange nuts (small flange) (3/8 inch) (Figure 8).
2. Install the tab to the inside of the mower deck with 1 carriage bolt (5/16 x 7/8 inch) and 1 flange nut (small flange) (5/16 inch) (Figure 8).

# 7

## Installing the Baffles

### Parts needed for this procedure:

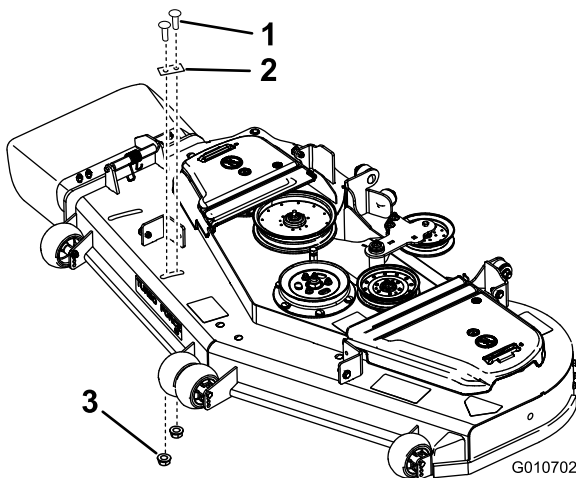
1	Left baffle
1	Center baffle
1	Right baffle
7	Flange nut (small flange), (3/8 inch)
6	Carriage bolt (3/8 x 1 inch)
2	Bolt, (3/8 x 1 inch)
1	Flange nut (large flange), (3/8 inch)



**Figure 8**

1. Carriage bolt, (3/8 x 1-1/4 inches)
2. Discharge plate
3. Flange nut (small flange), (3/8 inch)
4. Carriage bolt, (5/16 x 7/8 inch)
5. Flange nut, (5/16 inch)
6. Ensure the tab is positioned inside the mower deck

3. Install the cover plate with 2 carriage bolts (3/8 x 1 inch) and 2 flange nuts (large flange) (3/8 inch) (Figure 9).



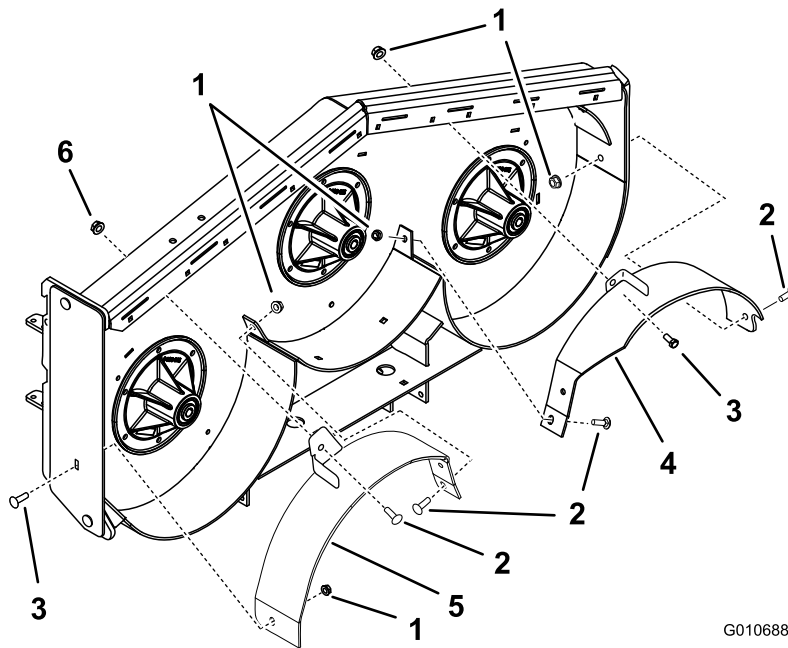
**Figure 9**

1. Carriage bolt, (3/8 x 1 inch)
2. Cover plate
3. Flange nut (large flange) (3/8 inch)

### Procedure

**Note:** Loosely install the baffles to align the baffles with all holes in the mower (Figure 10).

1. Position the right baffle into the mower.
2. Loosely install the right baffle to the discharge plate with 1 carriage bolt (3/8 x 1 inch) and a flange nut (small flange) (3/8 inch) (Figure 10).
3. Loosely install the right baffle to the top of the mower deck with 1 carriage bolt (3/8 x 1 inch) and 1 flange nut (large flange), (3/8 inch) (Figure 10).
4. Loosely install the right baffle to the mower deck with 1 carriage bolt (3/8 x 1 inch) and a flange nut (small flange) (3/8 inch) (Figure 10).
5. Position the left baffle into the mower.
6. Loosely install the left baffle to the top of the mower deck with 1 bolt (3/8 x 1 inch) and 1 flange nut (small flange) (3/8 inch) (Figure 10).
7. Loosely install the left baffle to the mower deck with 2 carriage bolts (3/8 x 1 inch) and 2 flange nuts (small flange) (3/8 inch) (Figure 10).



G010688

**Figure 10**  
GrandStand mower deck shown

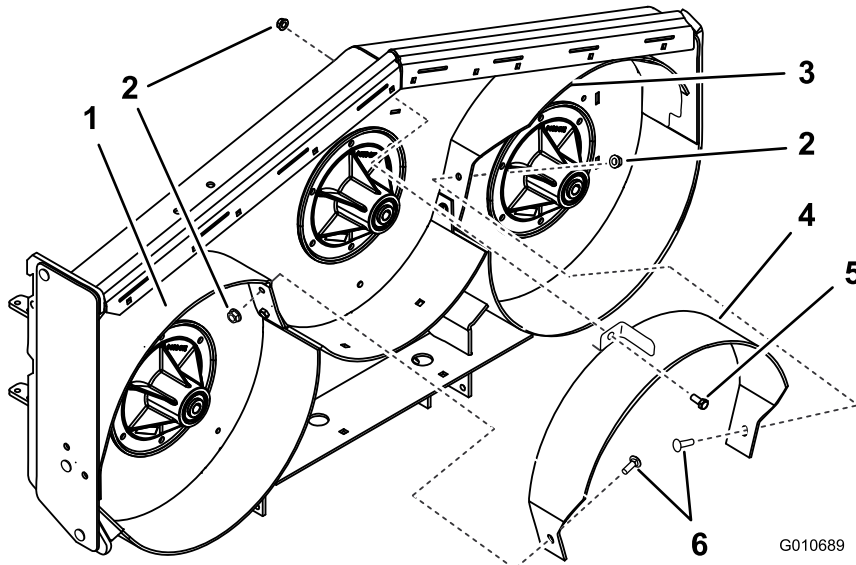
- |  |                         |  |
|--|-------------------------|--|
| 1. Flange nut (small flange), (3/8 inch) | 3. Bolt, (3/8 x 1 inch) | 5. Right baffle                          |
| 2. Carriage bolt, (3/8 x 1 inch)         | 4. Left baffle          | 6. Flange nut (large flange), (3/8 inch) |

8. Position the center baffle into the mower.

9. Loosely install the center baffle to the left baffle with 1 carriage bolt (3/8 x 1 inch) and 1 flange nut (small flange) (3/8 inch) (Figure 11).

10. Loosely install the center baffle to the right baffle with 1 carriage bolt (3/8 x 1 inch) and 1 flange nut (small flange) (3/8 inch) (Figure 11).

11. Loosely install the center baffle to the top of the mower deck with 1 bolt (3/8 x 1 inch) and 1 flange nut (small flange) (3/8 inch) (Figure 11).



G010689

**Figure 11**

- |  |                  |                                  |
|--|------------------|----------------------------------|
| 1. Right baffle                          | 3. Left baffle   | 5. Bolt, (3/8 x 1 inch)          |
| 2. Flange nut (small flange), (3/8 inch) | 4. Center baffle | 6. Carriage bolt, (3/8 x 1 inch) |



# 8

## Installing the Kickers on 72 inch Mowers

### Parts needed for this procedure:

2	Kickers
4	Carriage bolt (5/16 x 7/8 inch)
4	Lock nut (5/16 inch)

### Procedure

1. Install the new kickers to the mower in the locations shown in

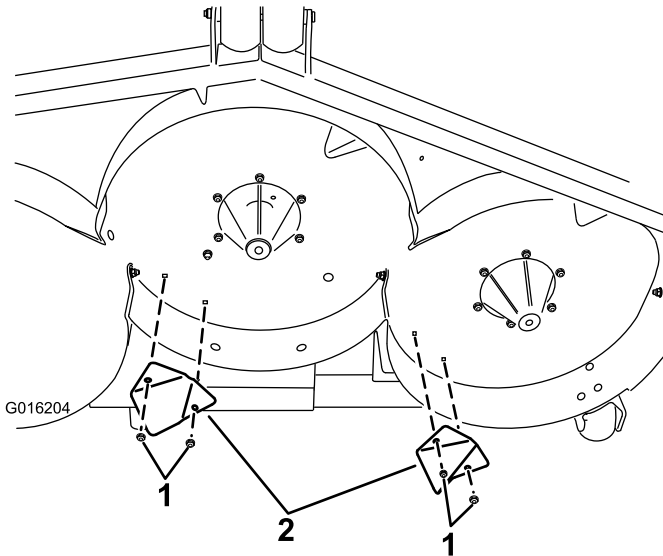


Figure 12

1. Carriage bolts (5/16 x 7/8 inch)
2. Kickers
3. Lock nuts (not shown, secured from top of deck)

2. Secure the kickers with 4 carriage bolts (5/16 x 7/8 inch).

# 9

## Installing the New Blades

### Parts needed for this procedure:

3	Recycler blades
---	-----------------

### Procedure

**Important:** The sail part of the blade (i.e., the turned up section) must face the inside of the mower (Figure 13).

1. Install the new blades to the spindles with curved washers and blade bolts that were previously removed (Figure 13).
2. Tighten the blade bolt to 75-80 ft-lb (101-108 N-m).

### ⚠ WARNING

A blade is sharp. Contact with sharp blade can cause serious personal injury.

Wear gloves or wrap sharp edges of the blade with a rag.

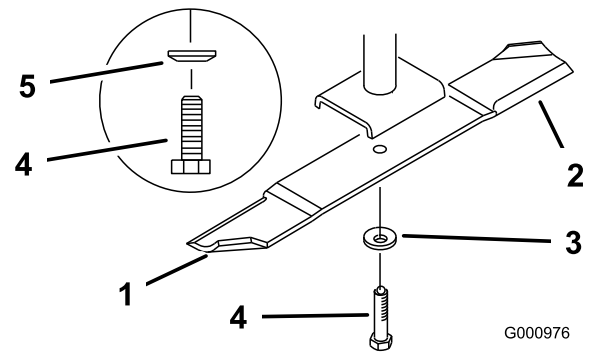


Figure 13

1. Sail area of blade
2. Blade
3. Curved washer
4. Blade bolt
5. Cone towards the bolt head

# 10

## Tightening all Fasteners

### No Parts Required

### Procedure

1. Tighten all nuts and bolts for the baffles (Figure 8, Figure 9, Figure 10 and Figure 11).
2. Rotate the blades and ensure there is clearance between the blades and the baffles. If there is interference, loosen the baffle and reposition it.
3. For GrandStand mowers, lower the machine, remove the plastic from the hydraulic tank, and connect the battery.
4. For GrandStand mowers, place the battery onto the machine.
5. Secure the battery with the hold down plate, j-bolts, and locknuts.
6. First, install the positive (red) battery cable to positive (+) battery terminal with a nut, washer and bolt. Slide the rubber cover over the post.
7. Then install the negative battery cable and ground wire to the negative (-) battery terminal with a nut, washer and bolt. Slide the rubber cover over the post.

## Operation

### Selecting the Proper Height-of-Cut

Remove approximately one inch or no more than 1/3 of the grass blade when cutting. In exceptionally lush and dense grass you may need to raise the height-of-cut setting or convert to side discharge or bagging operations.

### Mowing in Extreme Conditions

Air is required to cut and recut grass clippings in the mower housing, so do not set the height-of-cut too low or totally surround the housing by uncut grass. Always try to have one side of the mower housing free from uncut grass, allowing air to be drawn into the housing. When making an initial cut through the center of an uncut area, operate the machine slower and back up if the mower starts to clog.

### Mowing at Proper Intervals

Under most normal conditions you will need to mow every 4–5 days. However, grass grows at different rates at different times. Thus, in order to maintain the same height-of-cut, which is a good practice, you'll need to cut more frequently in early spring; as the grass growth rate slows in mid summer, cut only every 8–10 days. If you are unable to mow for an extended period due to weather conditions or other reasons, convert to side discharge or bagging options or mow first with the height-of-cut at a high level; then mow again 2–3 days later with a lower height setting.

### Mowing with Sharp Blades

A sharp blade cuts cleanly and without tearing or shredding the grass. A dull blade will tear and shred the grass. Tearing and shredding causes the grass to turn brown at the edges which impairs growth and increases susceptibility to disease.

### After Operating

To ensure optimum performance, clean the underside of the mower housing after each use. If residue is allowed to build up in the mower housing, cutting performance will decrease.

**Notes:**



**Count on it.**