



**Count on it.**

**Parts Catalog**

**36RD Mid-Size Rear-Discharge  
Deck**

**Model No. 02711—Serial No. 311000001 and Up**

# Ordering Replacement Parts

To order replacement parts, please supply the part number, the quantity, and the description of each part desired.

## Understanding Reference Numbers

Each identified part in an illustration has a reference number. The reference number for a part also appears in the parts list, along with other information about the part.

This catalog uses two special reference number formats, one to indicate parts in a service assembly and another to indicate the quantity of a given part in an illustration.

## Service Assembly Reference Numbers

Parts in service assemblies have reference numbers in the form a:b. The a represents the reference number of the entire service assembly and the b represents a sequential number unique to each part within the service assembly.

For example, a wheel assembly might be identified by reference number 6, the tire by 6:1, the valve by 6:2, and the wheel by 6:3. When you order the assembly identified by reference number 6, you receive all parts identified by reference numbers 6:1, 6:2, and 6:3. However, you may also order any part individually. Reference numbers of this type appear in illustration and in parts lists.

## Reference Numbers Indicating Quantity

In an illustration, if a reference number indicates more than one part, the reference number has the form nX y. The n represents the quantity of the part, the X is the multiplication symbol, and the y represents the reference number.

For example, in an illustration, the reference number 2X 37 means that two of the parts identified by reference number 37 are indicated.

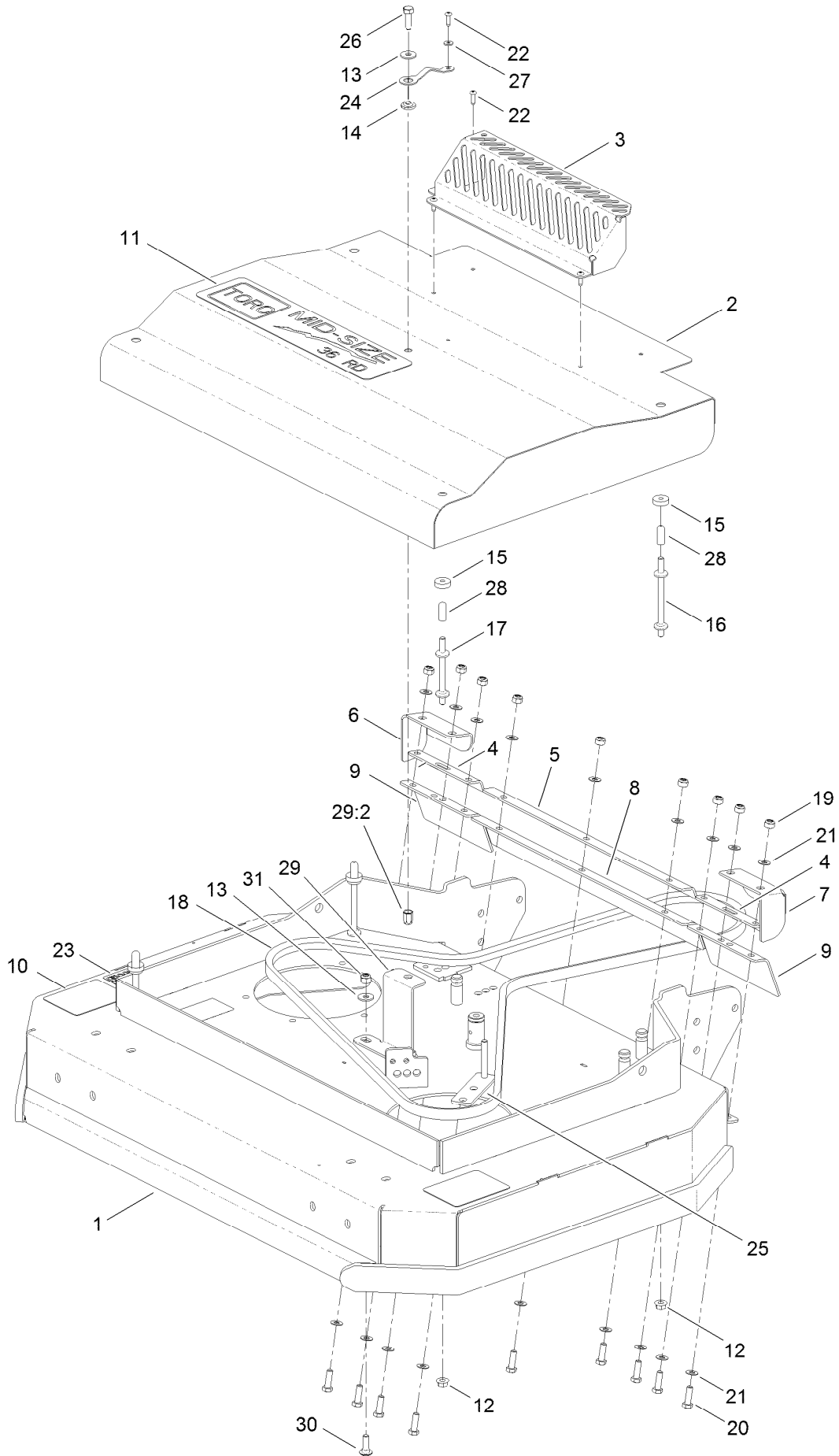
# List of Abbreviations

<b>AR:</b> as required	<b>HOC:</b> height-of-cut	<b>RRB:</b> rear roller brush
<b>ASM:</b> assembly	<b>HSBH:</b> hex socket button head	<b>SFH:</b> slotted fillister head
<b>BBC:</b> blade brake control	<b>HSFH:</b> hex socket flat head	<b>SHH:</b> slotted hex head
<b>BHTF:</b> button head thread forming	<b>HSH:</b> hex socket head	<b>SHWH:</b> slotted hex washer head
<b>CARR:</b> carriage	<b>HWH:</b> hex washer head	<b>SPH:</b> slotted pan head
<b>CCW:</b> counter clockwise	<b>HWTF:</b> hex washer head thread forming	<b>SQH:</b> square head
<b>CW:</b> clockwise	<b>HYD:</b> hydraulic	<b>SRH:</b> slotted round head
<b>DEG:</b> degrees	<b>LH:</b> left hand	<b>STD:</b> standard
<b>DPA:</b> Dual Point Adjustment	<b>LP:</b> Liquid Propane	<b>TAP:</b> self tapping
<b>ECM:</b> electronic control module	<b>NI:</b> nylon insert	<b>TTH:</b> torx truss head
<b>EXT:</b> external	<b>NPTF:</b> national pipe thread fine	
<b>FH:</b> flat head	<b>PFH:</b> phillips flat head	
<b>GA:</b> gauge	<b>PPH:</b> phillips pan head	
<b>HD:</b> heavy-duty	<b>PPHTF:</b> phillips pan head thread forming	
<b>HF:</b> hex flange	<b>PRH:</b> phillips round head	
<b>HH:</b> hex head	<b>PTH:</b> phillips truss head	
<b>HHF:</b> hex head flange	<b>PTO:</b> power-take-off	
<b>HHFTF:</b> hex head flange thread forming	<b>RH:</b> right hand	
<b>HJ:</b> hex jam	<b>ROPS:</b> roll-over protection system	
<b>HLH:</b> hex lag head		

# Contents

- Deck, Cover and Guard Assembly ..... 4
- Sheave, Spindle and Blade Assembly ..... 6
- Idler and Brake Assembly ..... 8
- Caster Assembly ..... 9
- Guard and Drag Shield Assembly ..... 10

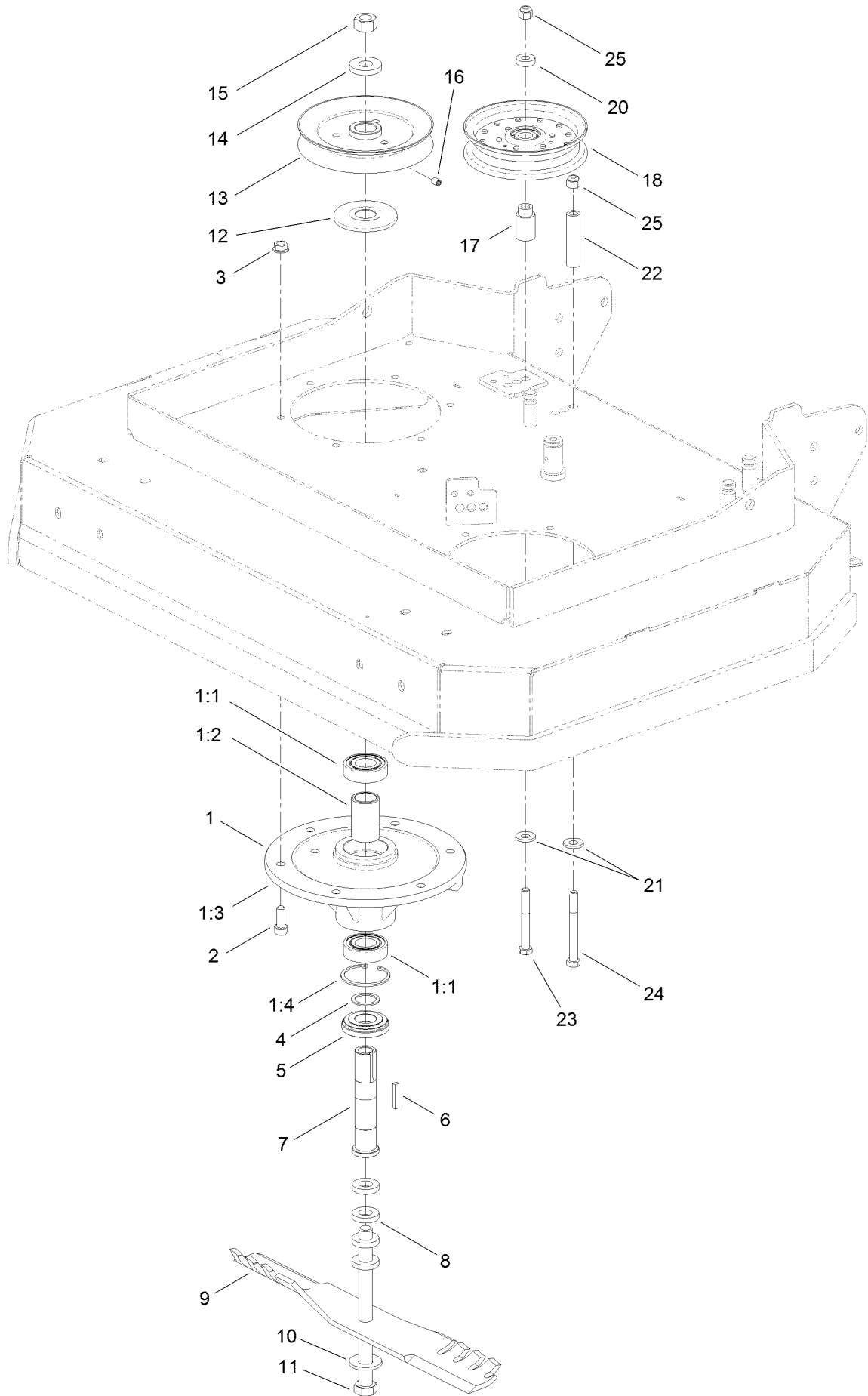
# Deck, Cover and Guard Assembly



## Deck, Cover and Guard Assembly (continued)

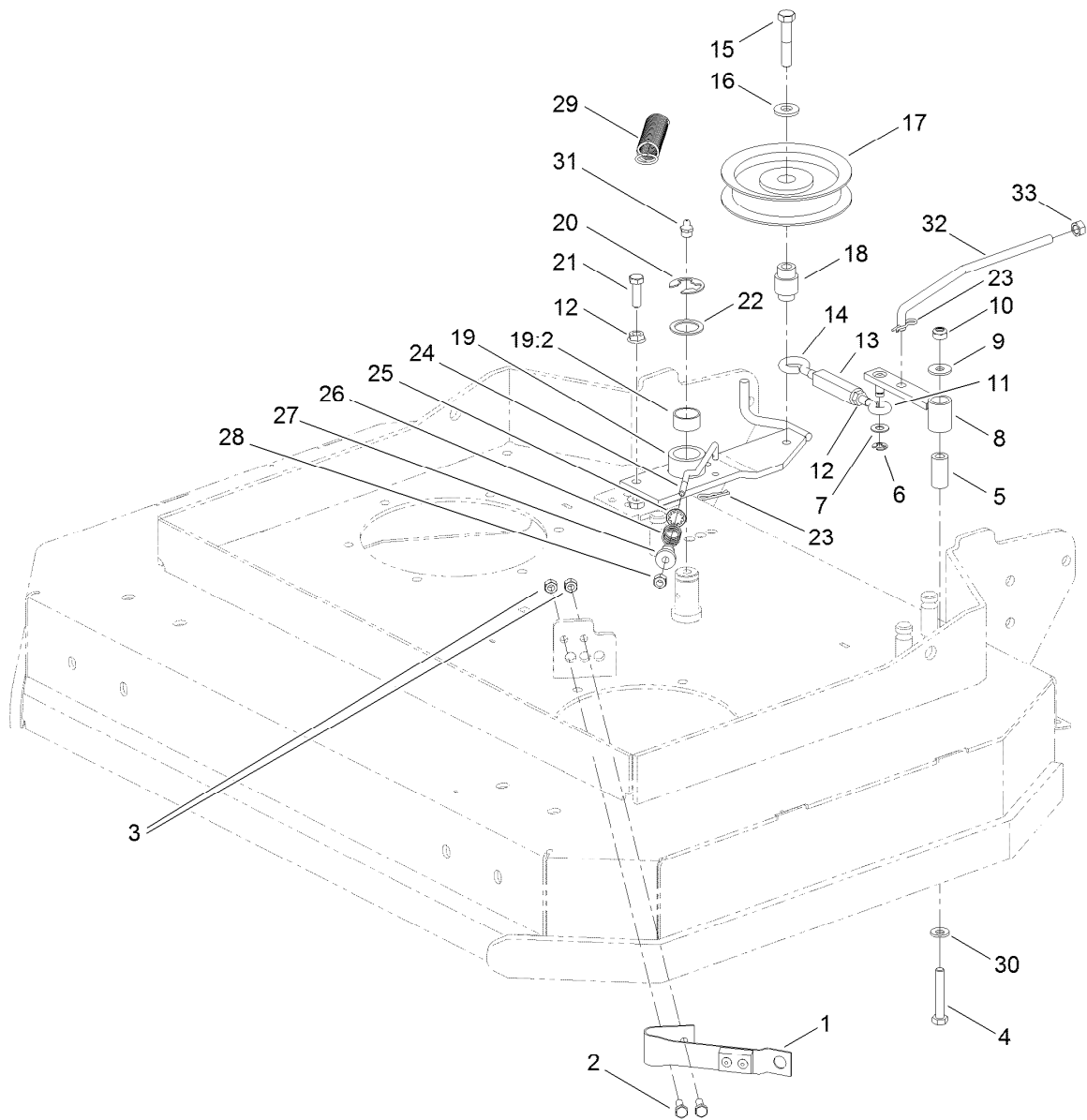
<i>Ref.</i>	<i>Part Number</i>	<i>Qty.</i>	<i>Description</i>	<i>Ref.</i>	<i>Part Number</i>	<i>Qty.</i>	<i>Description</i>
1	111-1330-01	1	36 Inch Deck ASM	17	1-303537	2	Stud-Shield, Belt (Short)
2	111-3923-01	1	Cover-Deck	18	111-2478	1	Belt-V
3	111-1543-01	1	Guard-Exhaust Pipe	19	ZNN3E000U	9	Nut-Nyloc
4	111-1645-01	2	Bracket-Deflector, Side	20	ZDH3E016U	9	Screw-HH
5	111-1545-01	1	Bracket-Deflector, Centre	21	09475	18	Washer
6	111-1643-01	1	Guard-Discharge, RH	22	09320	4	Rivet
7	111-1644-01	1	Guard-Discharge, LH	23	111-1979	1	Decal-Noise, 100 Db
8	111-1547	1	Deflector-Centre, Rubber	24	117-8339	1	Lanyard-3 Inch
9	111-1646	2	Deflector-Side, Rubber	25	111-2470-03	1	Guide-Belt
10	40-13-010	2	Decal-Warning	26	03162	1	Screw-HH
11	111-1765	1	Decal-Toro	27	09257	1	Washer
12	32128-20	4	Nut-HF	28	111-3882	4	Cap-End, Rubber
13	09267	3	Washer	29	111-3887	1	Bracket-Guard
14	111-3697	1	Nut-Retainer	29:2	100.004.493	1	Nut-Rivet
15	1-323417	4	Washer	30	09373	2	Bolt-Coach
16	1-303536	2	Stud-Shield, Belt (Long)	31	09442	2	Nut

# Sheave, Spindle and Blade Assembly



## Sheave, Spindle and Blade Assembly (continued)

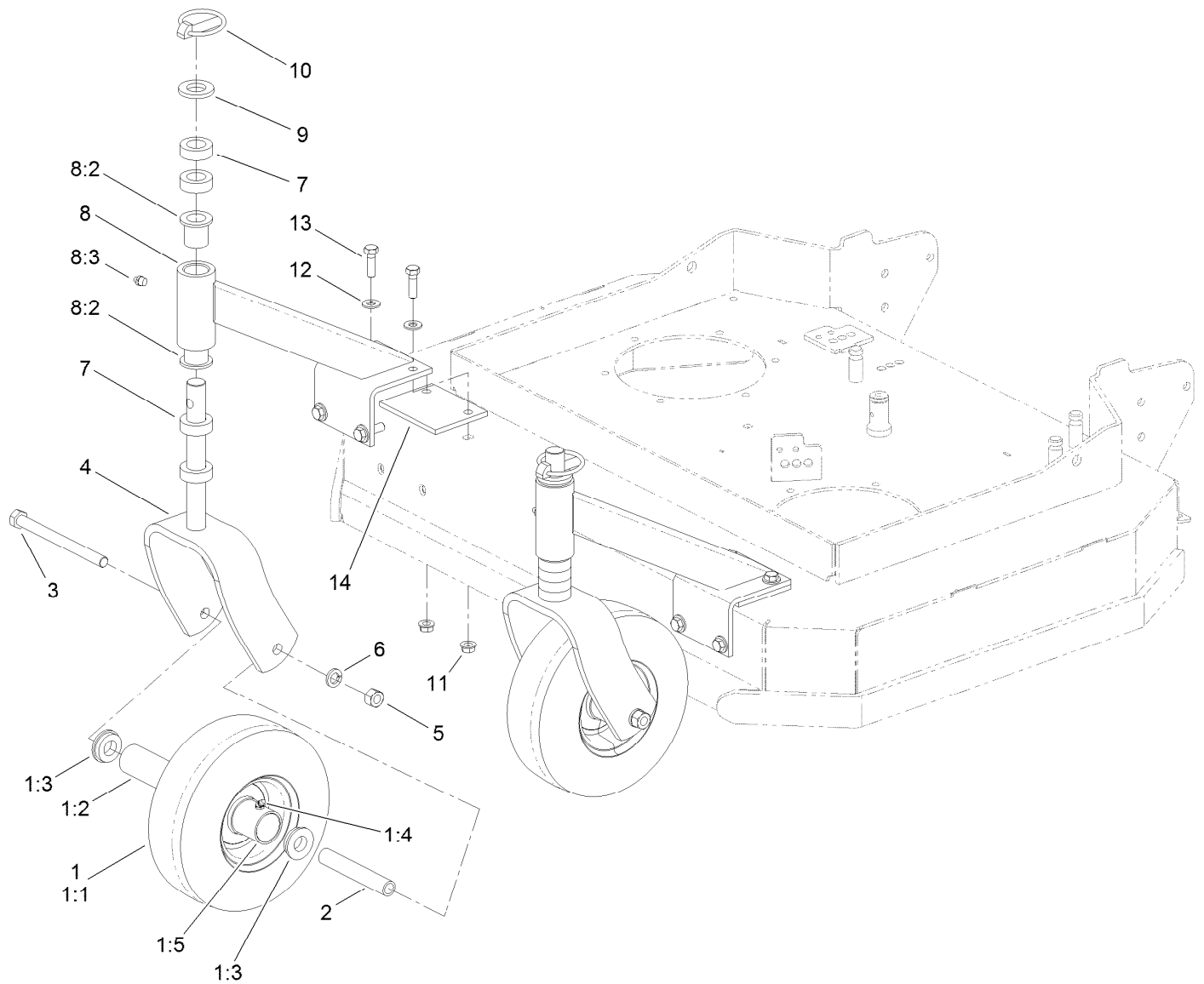
<i>Ref.</i>	<i>Part Number</i>	<i>Qty.</i>	<i>Description</i>	<i>Ref.</i>	<i>Part Number</i>	<i>Qty.</i>	<i>Description</i>
1	108-6697	2	Spindle Housing ASM	11	1-800861	2	Screw-Cap, HH
1:1	110-2118	2	Bearing	12	103-1330	2	Guard-Bearing, Top
1:2	110-2116	1	Spacer-Bearing	13	1-403183	2	Sheave
1:3	108-6694	1	Housing-Spindle	14	1-323339	2	Washer-Retainer, Sheave
1:4	32120-8	1	Ring-Snap	15	3219-6	2	Nut-Hex
2	95-1726	12	Screw-Taptite	16	1-803310	2	Screw-Set
3	3290-357	12	Nut-HHF, Whiz	17	1-413113	1	Bushing-Idler
4	110-4888	2	Washer-Spacer	18	1-403186	1	Idler-Pulley, Flat
5	103-2535	2	Spacer-Guard, Bottom	20	5-0652	1	Spacer
6	1-807267	2	Key	21	98-5975	2	Washer-Belleville
7	1-323529	2	Tube-Spindle, Short	22	1-403188	1	Spacer
8	1-323539	8	Spacer	23	09353	1	Bolt
9	105-7796-03	2	Blade-Atomic	24	323-15	1	Screw-HH
10	1-513208	2	Washer-Spring	25	3296-39	2	Nut-Lock, NI



## Idler and Brake Assembly

<i>Ref.</i>	<i>Part Number</i>	<i>Qty.</i>	<i>Description</i>	<i>Ref.</i>	<i>Part Number</i>	<i>Qty.</i>	<i>Description</i>
1	1-324372	1	Pad And Spring ASM	18	1-303434	1	Bushing-Engagement
2	09821	2	Screw-HH	19	103-3600	1	Idler Arm ASM
3	3296-42	2	Nut-Lock, NI	19:2	1-323729	2	Sleeve-Bearing
4	322-10	1	Screw-HH	20	32151-103	1	Ring-Retaining, EXT
5	1-403179	1	Tube-Pivot	21	ZDH3E016U	1	Screw-HH
6	32120-35	1	Ring-Retaining, EXT	22	1-303352	1	Washer-Spindle
7	09475	1	Washer	23	1-806003	2	Pin-Cotter, Hair
8	1-322235	1	Arm-Assist	24	1-323715	1	Rod-Brake
9	09267	1	Washer	25	1-323748	1	Ring-Push On
10	ZNN3E000U	1	Nut-Nyloc	26	1-323747	1	Spring-Compression
11	1-303238	1	Eyebolt-Thread, RH	27	1-323746	1	Spacer-Flanged
12	32128-20	3	Nut-HF	28	3296-42	1	Nut-Lock, NI
13	1-303236	1	Body-Turnbuckle	29	1-323071	1	Spring-Extension
14	1-303348	1	Eyebolt-Thread, LH	30	1-303334	1	Washer-Spring
15	702809	1	Screw-HH	31	10-11-017	1	Zerk-Grease, Straight
16	98-5975	1	Washer-Belleville	32	111-1629	1	Rod-Linkage, Drive
17	1-603843	1	Pulley-Idler	33	09207	1	Nut



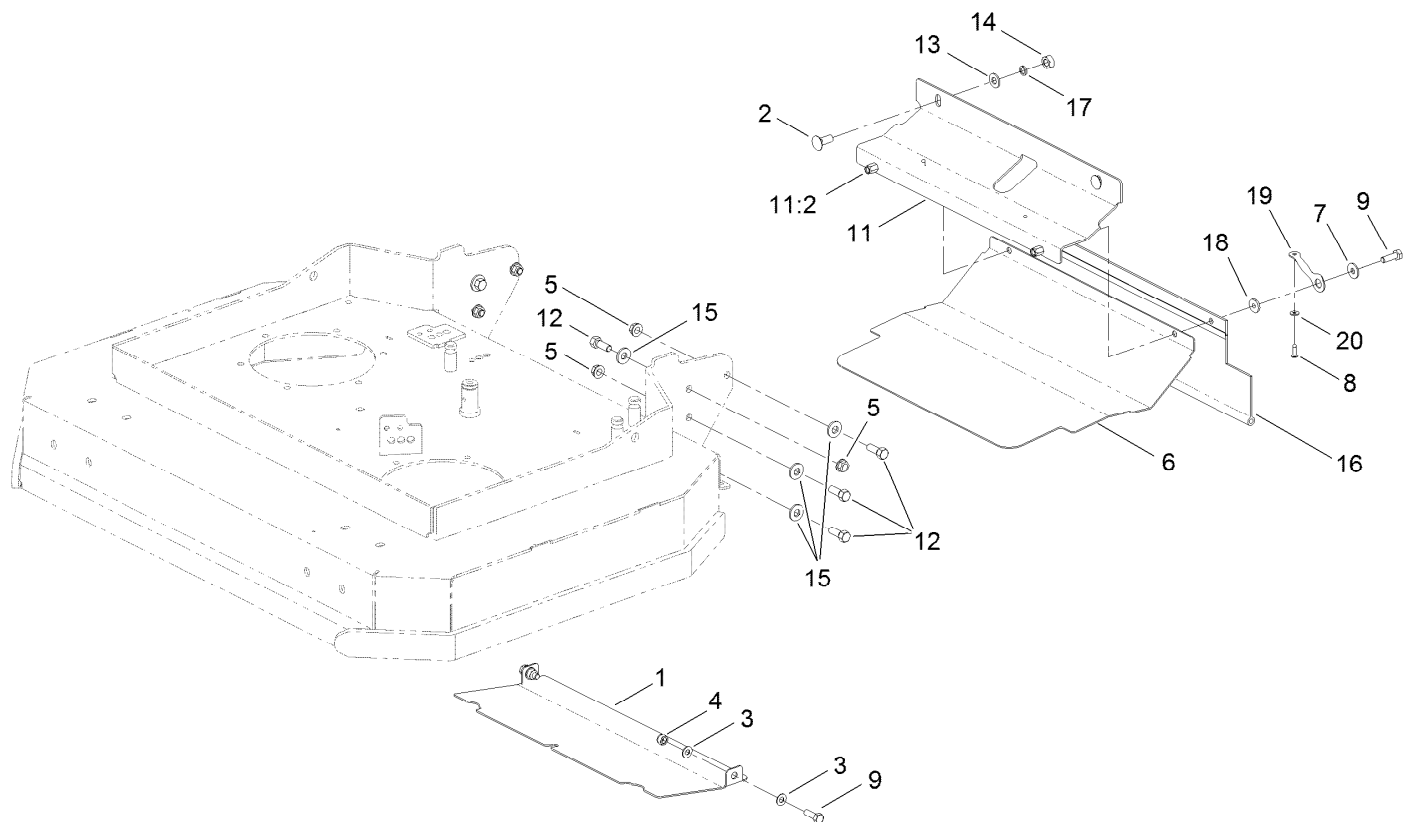


## Caster Assembly

Ref.	Part Number	Qty.	Description
1	110-5023	2	Wheel And Tire ASM
1:1		1	Tire ●
1:2	1-513809	1	Bearing
1:3	1-513810	2	Bushing
1:4	302-61	1	Fitting-Grease
1:5		1	Wheel ●
2	1-513547	2	Spacer
3	325-20	2	Screw-HH
4	1-322145-01	2	Fork
5	3217-9	2	Nut-HH
6	3253-7	2	Washer-Lock

Ref.	Part Number	Qty.	Description
7	1-303314	8	Spacer-Caster
8	110-2130	2	Support ASM
8:2	1-303514	2	Bearing-Flanged
8:3	302-52	1	Fitting-Grease
9	1-513338	2	Washer-Flat
10	1-809020	2	Pin
11	3290-357	8	Nut-HHF, Whiz
12	ZWQ1J000U	8	Washer-Plain
13	323-7	8	Screw-HH
14	111-1900-01	2	Spacer-Caster

● Not serviced separately



## Guard and Drag Shield Assembly

<i>Ref.</i>	<i>Part Number</i>	<i>Qty.</i>	<i>Description</i>
1	111-1408-01	1	Guard-Discharge, Centre
2	15-11-003	2	Bolt-CARR
3	09475	4	Washer
4	09441	2	Nut-Nyloc
5	3290-357	8	Nut-HHF, Whiz
6	111-1655-01	1	Guard-Underside
7	09267	2	Washer
8	09320	2	Rivet
9	03162	4	Screw-HH
11	111-1986	1	Guard-Drive

<i>Ref.</i>	<i>Part Number</i>	<i>Qty.</i>	<i>Description</i>
11:2	100.004.493	2	Nut-Rivet
12	HY103653	8	Screw-HH
13	ZWQ1J000U	2	Washer-Plain
14	09449	2	Nut
15	98-5975	8	Washer-Belleville
16	103-2056	1	Shield-Drag
17	09480	2	Washer-Spring
18	111-3697	2	Nut-Retainer
19	117-8339	2	Lanyard-3 Inch
20	09257	2	Washer

**Notes:**



**Count on it.**