



Count on it.

Parts Catalog

Aerothatch 83

Model No. 44830—Serial No. 200000001 and Up

Ordering Replacement Parts

To order replacement parts, please supply the part number, the quantity, and the description of each part desired.

Understanding Reference Numbers

Each identified part in an illustration has a reference number. The reference number for a part also appears in the parts list, along with other information about the part.

This catalog uses two special reference number formats, one to indicate parts in a service assembly and another to indicate the quantity of a given part in an illustration.

Service Assembly Reference Numbers

Parts in service assemblies have reference numbers in the form a:b. The a represents the reference number of the entire service assembly and the b represents a sequential number unique to each part within the service assembly.

For example, a wheel assembly might be identified by reference number 6, the tire by 6:1, the valve by 6:2, and the wheel by 6:3. When you order the assembly identified by reference number 6, you receive all parts identified by reference numbers 6:1, 6:2, and 6:3. However, you may also order any part individually. Reference numbers of this type appear in illustration and in parts lists.

Reference Numbers Indicating Quantity

In an illustration, if a reference number indicates more than one part, the reference number has the form nX y. The n represents the quantity of the part, the X is the multiplication symbol, and the y represents the reference number.

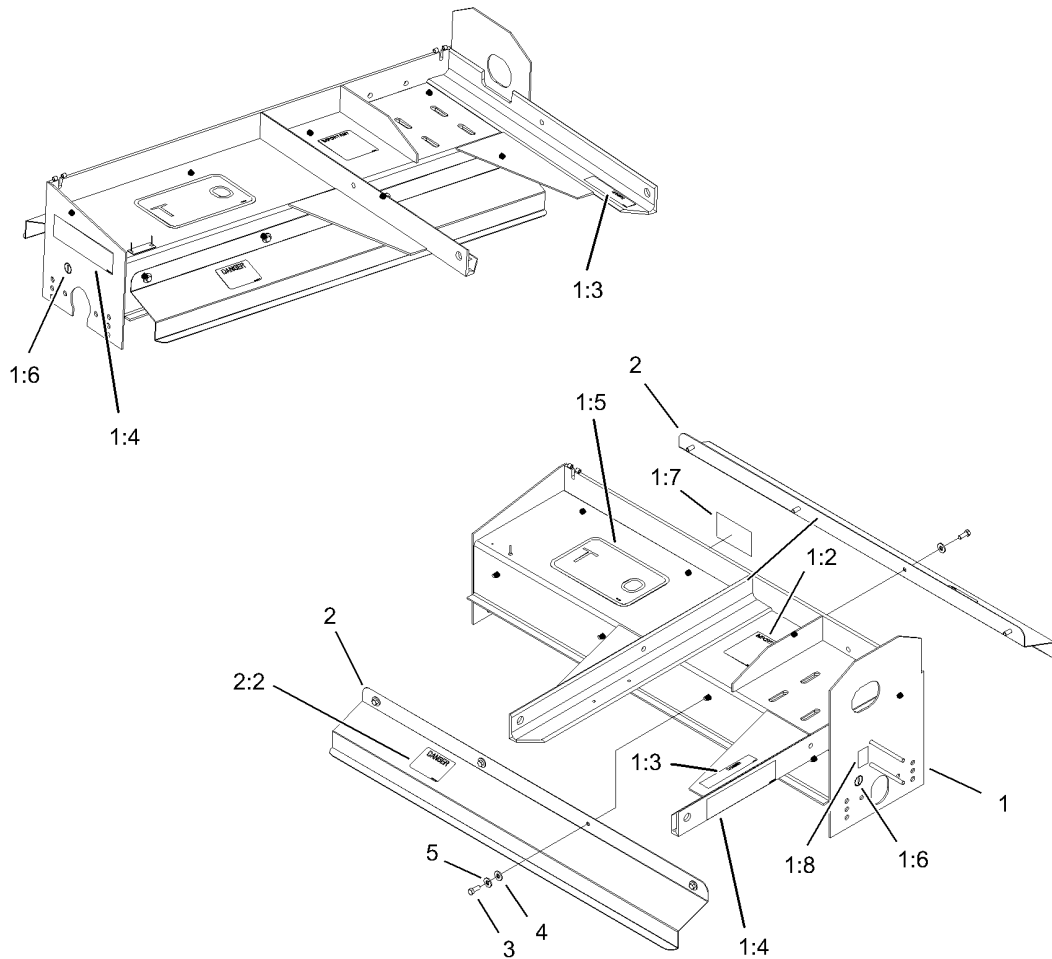
For example, in an illustration, the reference number 2X 37 means that two of the parts identified by reference number 37 are indicated.

List of Abbreviations

AR: as required	HLH: hex lag head	RH: right hand
ASM: assembly	HOC: height-of-cut	ROPS: roll-over protection system
BBC: blade brake control	HSBH: hex socket button head	RRB: rear roller brush
BHTF: button head thread forming	HSFH: hex socket flat head	SFH: slotted fillister head
CARR: carriage	HSH: hex socket head	SHH: slotted hex head
CCW: counter clockwise	HWH: hex washer head	SHWH: slotted hex washer head
CW: clockwise	HWHTF: hex washer head thread forming	SPH: slotted pan head
DEG: degrees	HYD: hydraulic	SQH: square head
ECM: electronic control module	LH: left hand	SRH: slotted round head
EXT: external	NI: nylon insert	STD: standard
FH: flat head	NPTF: national pipe thread fine	TAP: self tapping
GA: gauge	PFH: phillips flat head	TTH: torx truss head
HD: heavy-duty	PPH: phillips pan head	
HF: hex flange	PPHTF: phillips pan head thread forming	
HH: hex head	PRH: phillips round head	
HHF: hex head flange	PTH: phillips truss head	
HHFTF: hex head flange thread forming	PTO: power-take-off	
HJ: hex jam		

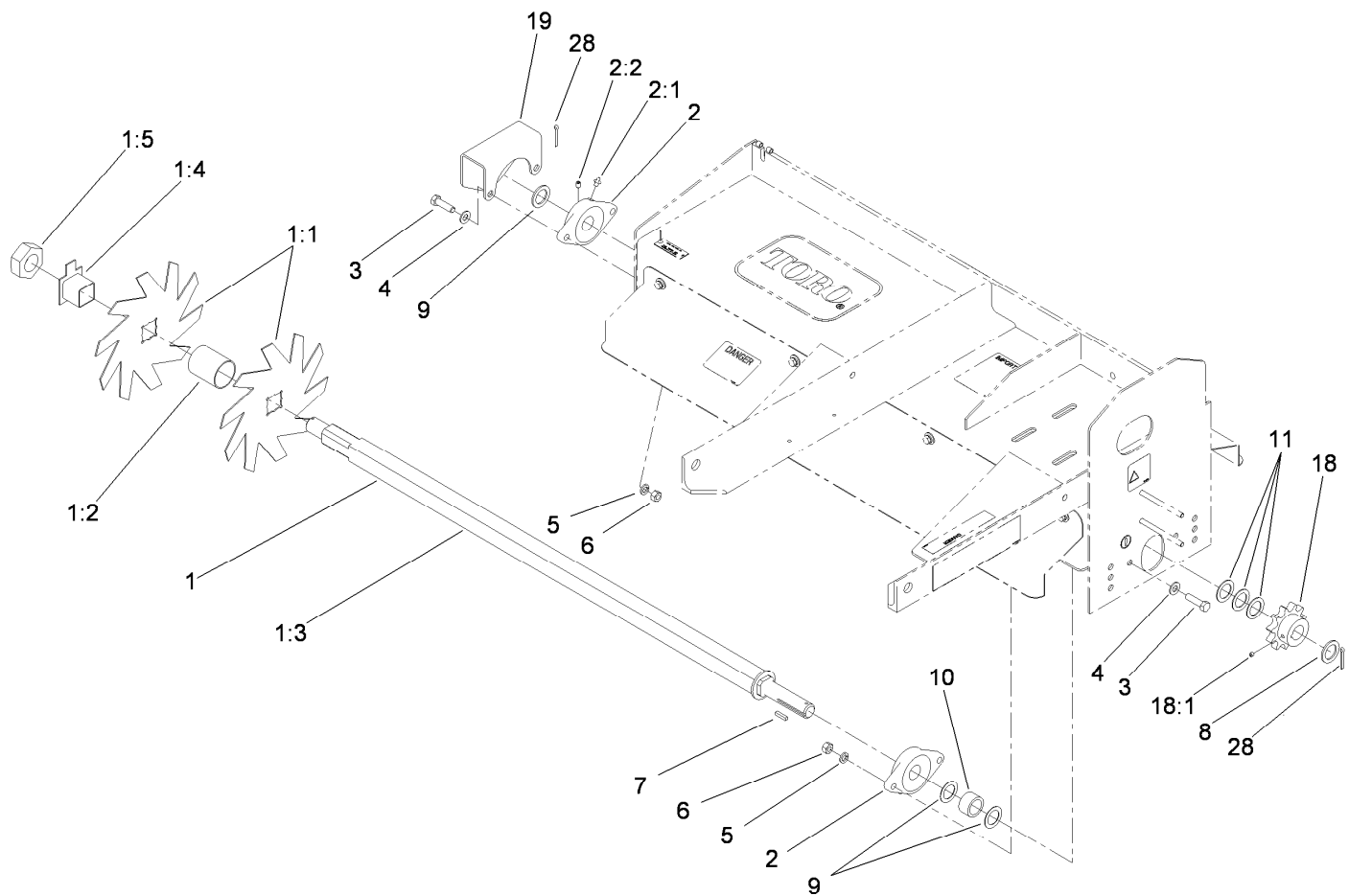
Contents

Main Frame Assembly	4
Blade Shaft Assembly	5
Roller and Scraper Assembly	6
Gearbox Mounting Assembly	7
Driveshaft Assembly No. 104-0590	8
Mounting Assembly	9
Attachments and Accessories	10



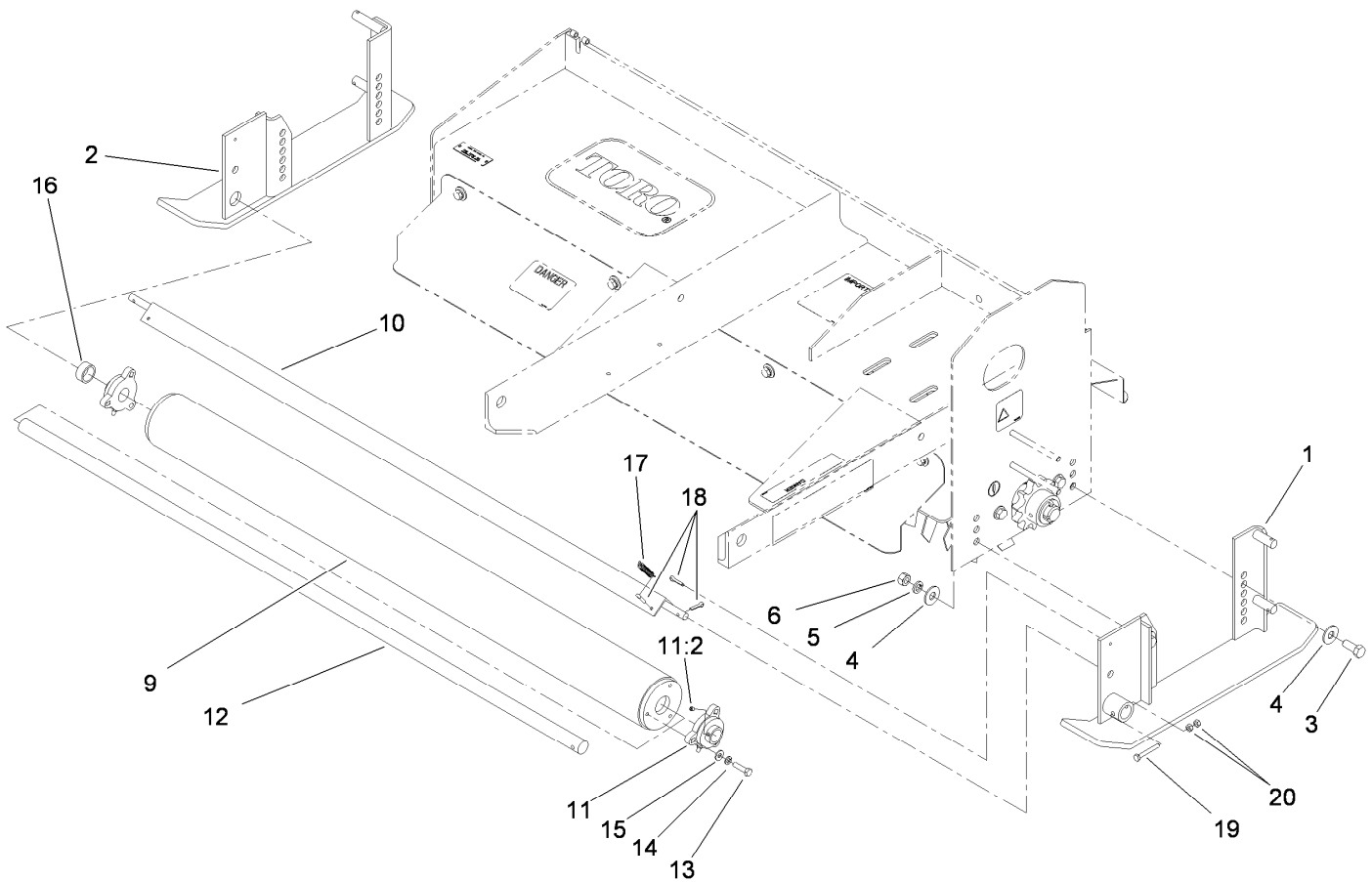
Main Frame Assembly

<i>Ref.</i>	<i>Part Number</i>	<i>Qty.</i>	<i>Description</i>
1	104-2514	1	Main Frame ASM
1:2	01-506-0160	1	Decal-Information, PTO
1:3	01-506-0130	2	Decal-Danger, PTO
1:4	01-506-1010	2	Decal-Aerothatch 83
1:5	66-1210	1	Decal
1:6	58-6520	2	Decal-Grease
1:7	104-0332	1	Decal-Rotating Blade
1:8	99-4486	1	Decal-Warning
2	104-2515	2	Roller And Blade Shield ASM
2:2	104-0332	1	Decal-Rotating Blade
3	323-6	8	Screw-HH
4	3256-4	16	Washer-Flat
5	3253-21	8	Washer-Lock



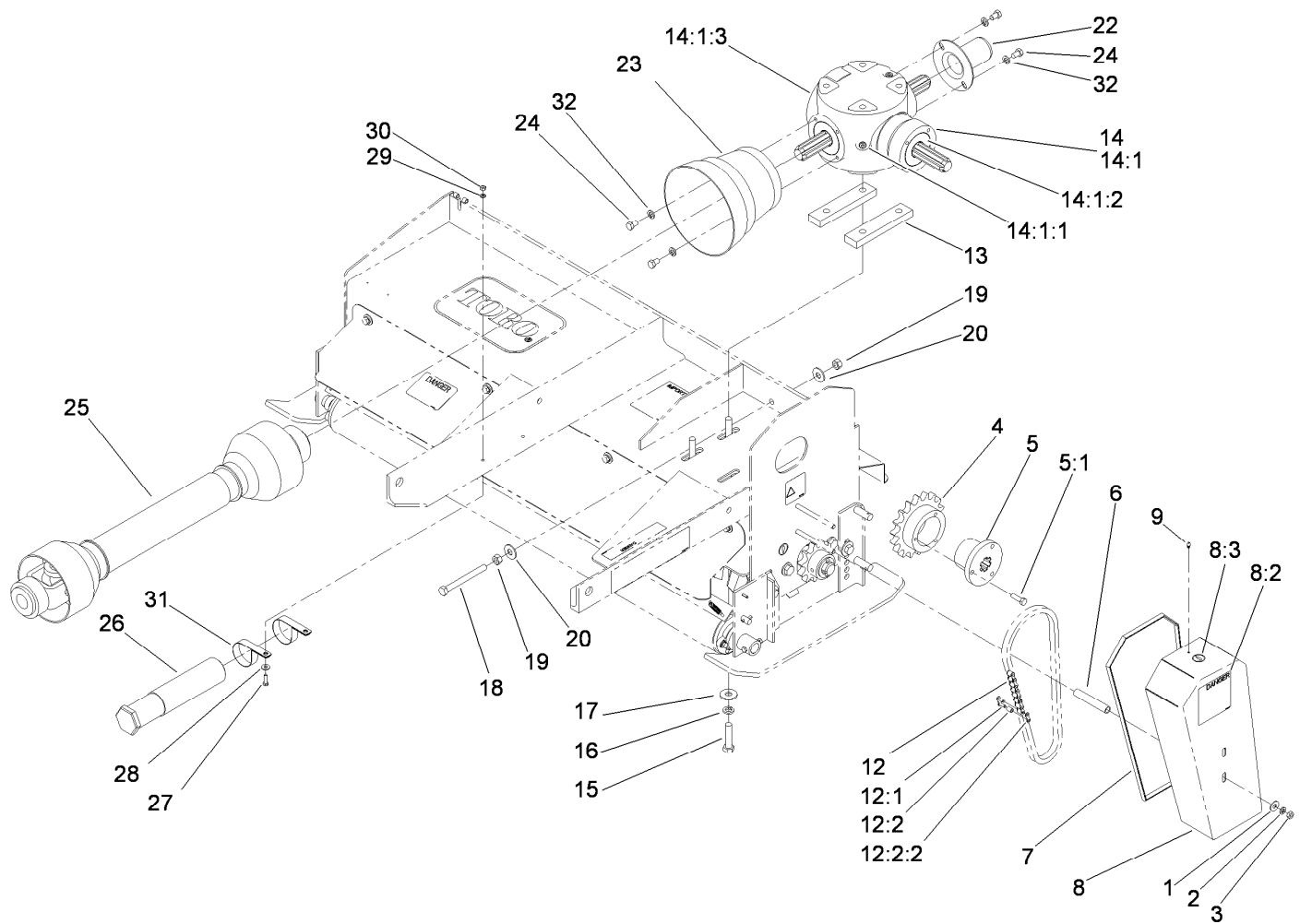
Blade Shaft Assembly

Ref.	Part Number	Qty.	Description	Ref.	Part Number	Qty.	Description
1	104-1288	1	Blade Shaft ASM	5	3253-7	4	Washer-Lock
1:1	01-283-0090	16	Thatcher-Blade	6	3217-9	4	Nut-HH
1:2	83-004-0311	15	Spacer-Blade	7	5-0698	1	Key
1:3	104-0580-01	1	Shaft-Blade, Square	8	01-168-2010	2	Bushing
1:4	83-005-1011	1	Locking Spacer ASM	9	01-168-2018	4	Bushing
1:5	01-191-2805	1	Nut-Jam	10	104-0596	1	Spacer-Shaft
2	01-100-0170	2	Bearing-Flange	11	01-168-2014	3	Bushing
2:1	302-2	1	Fitting-Grease	18	01-262-0190	1	Sprocket-Tooth, 11
2:2	3246-17	1	Setscrew-HSH	18:1	3246-2	1	Screw-Set, HSH
3	325-7	4	Screw-HH	19	100-7732-01	1	Guard-Shaft
4	3256-26	4	Washer-Flat	28	3272-23	2	Pin-Cotter



Roller and Scraper Assembly

<i>Ref.</i>	<i>Part Number</i>	<i>Qty.</i>	<i>Description</i>	<i>Ref.</i>	<i>Part Number</i>	<i>Qty.</i>	<i>Description</i>
1	104-2536-01	1	Skid-LH	12	83-004-0841-01	1	Shaft-Roller
2	104-2534-01	1	Skid-RH	13	322-6	6	Screw-HH
3	325-5	4	Screw-HH	14	3253-4	6	Washer-Lock
4	3256-6	8	Washer-Flat	15	3256-2	6	Washer-Flat
5	3253-7	4	Washer-Lock	16	83-004-0371	2	Spacer-Roller
6	3217-9	4	Nut-HH	17	01-261-0130	2	Spring-Expansion
9	83-005-0042-01	1	Roller	18	3272-48	6	Pin-Cotter
10	83-005-0072-01	1	Wiper	19	321-11	1	Screw-HH
11	01-100-0260	2	Bearing-Flange	20	3217-5	2	Nut-Hex
11:2	3245-35	1	Screw-Set				

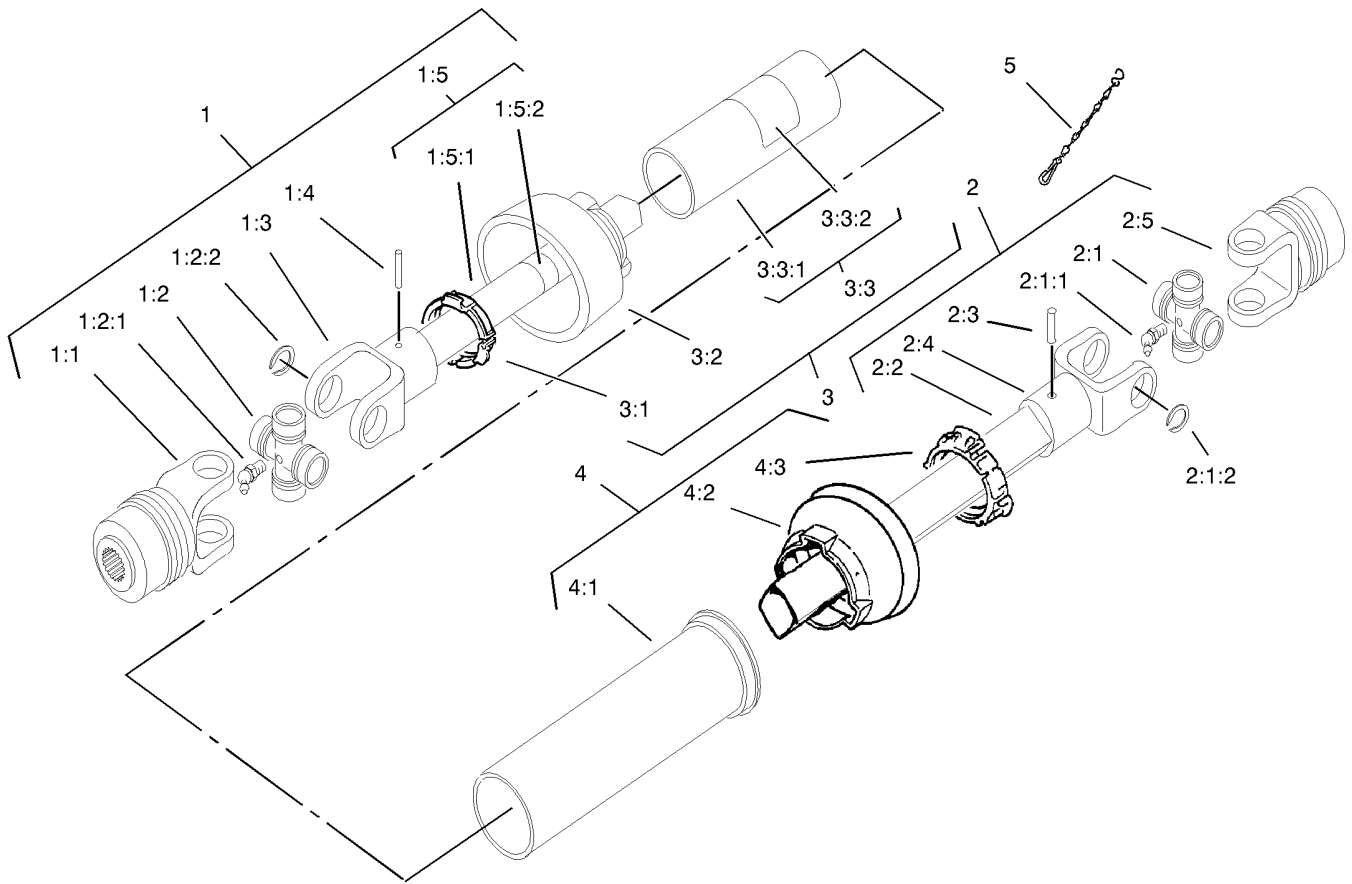


Gearbox Mounting Assembly

Ref.	Part Number	Qty.	Description	Ref.	Part Number	Qty.	Description
1	3256-4	2	Washer-Flat	14:1:2	104-2549	3	Seal-Oil
2	3253-21	2	Washer-Lock	14:1:3	104-4201	1	Cover-Access, Gearbox
3	3217-7	2	Nut-Hex	15	104-1284	4	Screw-Cap HH
4	01-262-0060	1	Sprocket-18 Tooth	16	104-0599	4	Washer-Lock, Split
5	104-0595	1	Bushing-Taper	17	104-0598	4	Washer-Flat
5:1	323-44	3	Screw-HH	18	104-0597	2	Screw-HH
6	83-004-0871	2	Spacer-Guard	19	3217-9	4	Nut-HH
7	83-004-0601	1	Seal-Guard, Edge	20	3256-6	4	Washer-Flat
8	104-2516	1	Chain Guard Cover ASM	22	104-0591	1	Cover-Shaft, Gearbox
8:2	01-506-0050	1	Decal-Guard, Chain	23	104-0592	1	Cone-Shield, PTO
8:3	58-6520	1	Decal-Grease	24	33115-016	4	Screw-HH
9	302-22	1	Fitting-Grease	25	104-0590	1	Driveshaft-PTO
12	114-4106	1	Roller Chain Kit	26	74-0720	1	Tube-Manual
12:1	01-251-0170	1	Link-Offset ●	27	321-5	2	Screw-HH
12:2	83-004-0511	1	Roller-Chain ●	28	3256-2	2	Washer-Flat
12:2:2	01-251-0180	1	Link-Connector, H80 ●	29	3253-3	2	Washer-Lock
13	104-0586	2	Spacer-Gearbox	30	3217-5	2	Nut-Hex
14	104-0589-03	1	Gearbox ASM	31	2412-133	2	R-Clamp
14:1		1	Gearbox ■	32	3253-6	4	Washer-Lock
14:1:1	285-21	3	Plug-Pipe				

● Not illustrated

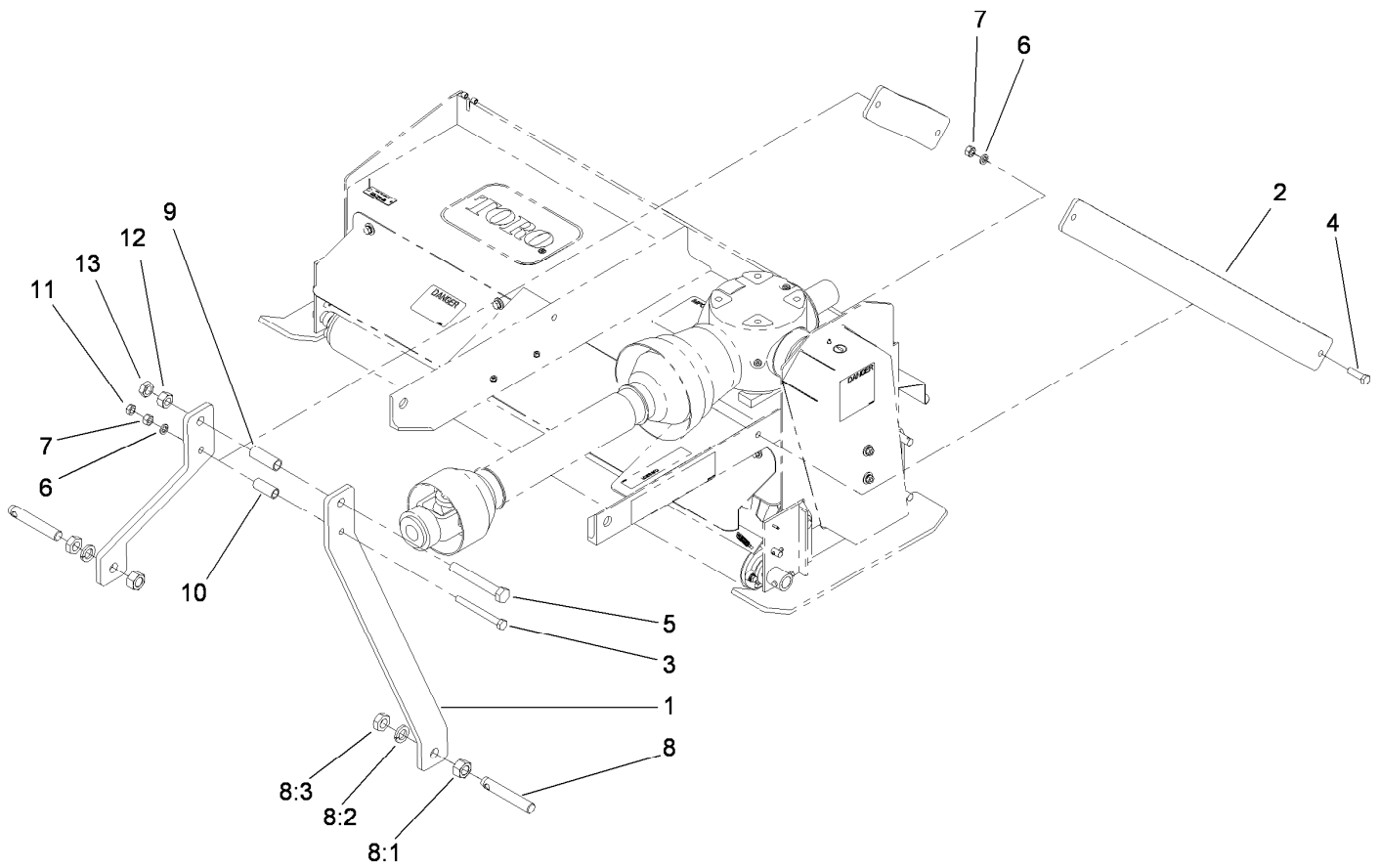
■ Not serviced separately



Driveshaft Assembly No. 104-0590

<i>Ref.</i>	<i>Part Number</i>	<i>Qty.</i>	<i>Description</i>
1	104-0339	1	Half Shaft
1:1	01-282-0830	1	Yoke
1:2	01-282-0300	1	Joint-Cross, PTO
1:2:1	01-282-0320	1	Fitting-Grease
1:2:2	01-282-1550	4	Circlip
1:3	01-282-2050	1	Yoke-Tube, Outer
1:4	01-282-2060	1	Pin-Flexible
1:5	104-0345	1	Cardan Tube ASM
1:5:1	104-0333	1	Tube-Cardan
1:5:2	104-0335	1	Decal
2	104-0340	1	Shaft-Half
2:1	01-282-0300	1	Joint-Cross, PTO
2:1:1	01-282-0320	1	Fitting-Grease
2:1:2	01-282-1550	4	Circlip
2:2	104-0334	1	Tube-Cardan

<i>Ref.</i>	<i>Part Number</i>	<i>Qty.</i>	<i>Description</i>
2:3	01-282-2090	1	Pin-Flexible
2:4	01-282-2100	1	Yoke-Tube, Inner
2:5	104-2509	1	Yoke-Twist Lock
3	104-0341	1	Shield-Half, Safety
3:1	01-282-0370	1	Bearing-Sheild
3:2	01-282-0390	1	Cone-Tube, Outer
3:3	104-0344	1	Safety Tube ASM
3:3:1	104-0337	1	Tube-Safety
3:3:2	104-0336	1	Decal
4	104-0342	1	Shield-Half, Safety
4:1	104-0338	1	Tube-Safety
4:2	01-282-0400	1	Cone-Tube, Inner
4:3	01-282-0380	1	Bearing-Shield
5	77-4760	1	Chain-Safety



Mounting Assembly

Ref.	Part Number	Qty.	Description
1	83-004-0291-01	2	Mount-Arm
2	83-004-0302-01	2	Arm-Stabilizer
3	325-19	1	Screw-HH
4	325-7	2	Screw-HH
5	328-12	1	Screw-HH
6	3253-7	3	Washer-Lock
7	3217-9	3	Nut-HH
8	01-252-0010	2	Lift Arm Pin Adjustment ASM
8:1	3219-18	1	Nut-Hex
8:2	3253-28	1	Washer-Lock/Sp
8:3	3219-8	1	Nut-Hex
9	83-004-0381	1	Spacer-3 Pt Hitch, Top
10	83-004-0391	1	Spacer-3 Pt Hitch, Bottom
11	3218-5	1	Nut-Jam
12	3217-12	1	Nut-Hex
13	3218-7	1	Nut-Jam

Attachments and Accessories

For 44830 Aerothatch 83

Product Name	Model/Part
12 Ga Thatcher Blade Shaft Asm.....	100-7734
10 Ga Thatcher Blade Shaft Asm.....	104-1285
7 Ga Thatcher Blade Shaft Asm	104-1286
1 Inch Spa Thatcher Blade Shaft Asm	104-1287
Blade Shaft Asm	104-1288

Notes:



Count on it.