



**Count on it.**

**Parts Catalog**

**MH-400EH2 Material Delivery Unit**

Model No. 44934—Serial No. 311000001 and Up

# Ordering Replacement Parts

To order replacement parts, please supply the part number, the quantity, and the description of each part desired.

## Understanding Reference Numbers

Each identified part in an illustration has a reference number. The reference number for a part also appears in the parts list, along with other information about the part.

This catalog uses two special reference number formats, one to indicate parts in a service assembly and another to indicate the quantity of a given part in an illustration.

## Service Assembly Reference Numbers

Parts in service assemblies have reference numbers in the form a:b. The a represents the reference number of the entire service assembly and the b represents a sequential number unique to each part within the service assembly.

For example, a wheel assembly might be identified by reference number 6, the tire by 6:1, the valve by 6:2, and the wheel by 6:3. When you order the assembly identified by reference number 6, you receive all parts identified by reference numbers 6:1, 6:2, and 6:3. However, you may also order any part individually. Reference numbers of this type appear in illustration and in parts lists.

## Reference Numbers Indicating Quantity

In an illustration, if a reference number indicates more than one part, the reference number has the form nX y. The n represents the quantity of the part, the X is the multiplication symbol, and the y represents the reference number.

For example, in an illustration, the reference number 2X 37 means that two of the parts identified by reference number 37 are indicated.

# List of Abbreviations

**AR:** as required

**ASM:** assembly

**BBC:** blade brake control

**BHTF:** button head thread forming

**CARR:** carriage

**CCW:** counter clockwise

**CW:** clockwise

**DEG:** degrees

**DPA:** Dual Point Adjustment

**ECM:** electronic control module

**EXT:** external

**FH:** flat head

**GA:** gauge

**HD:** heavy-duty

**HF:** hex flange

**HH:** hex head

**HHF:** hex head flange

**HHFTF:** hex head flange thread forming

**HJ:** hex jam

**HLH:** hex lag head

**HOC:** height-of-cut

**HSBH:** hex socket button head

**HSFH:** hex socket flat head

**HSH:** hex socket head

**HWH:** hex washer head

**HWTF:** hex washer head thread forming

**HYD:** hydraulic

**LH:** left hand

**LP:** Liquid Propane

**NI:** nylon insert

**NPTF:** national pipe thread fine

**PFH:** phillips flat head

**PPH:** phillips pan head

**PPHTF:** phillips pan head thread forming

**PRH:** phillips round head

**PTH:** phillips truss head

**PTO:** power-take-off

**RH:** right hand

**ROPS:** roll-over protection system

**RRB:** rear roller brush

**SFH:** slotted fillister head

**SHH:** slotted hex head

**SHWH:** slotted hex washer head

**SPH:** slotted pan head

**SQH:** square head

**SRH:** slotted round head

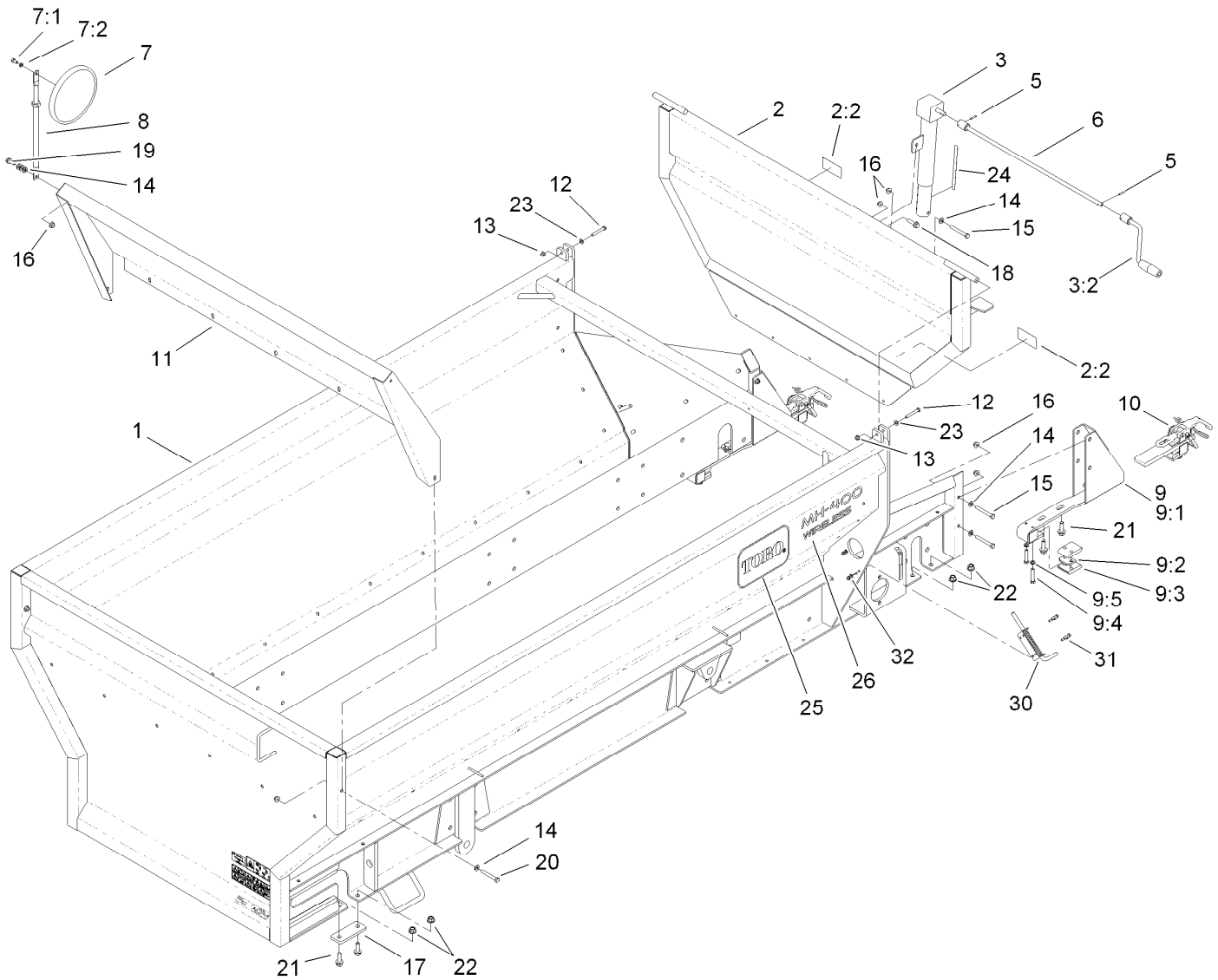
**STD:** standard

**TAP:** self tapping

**TTH:** torx truss head

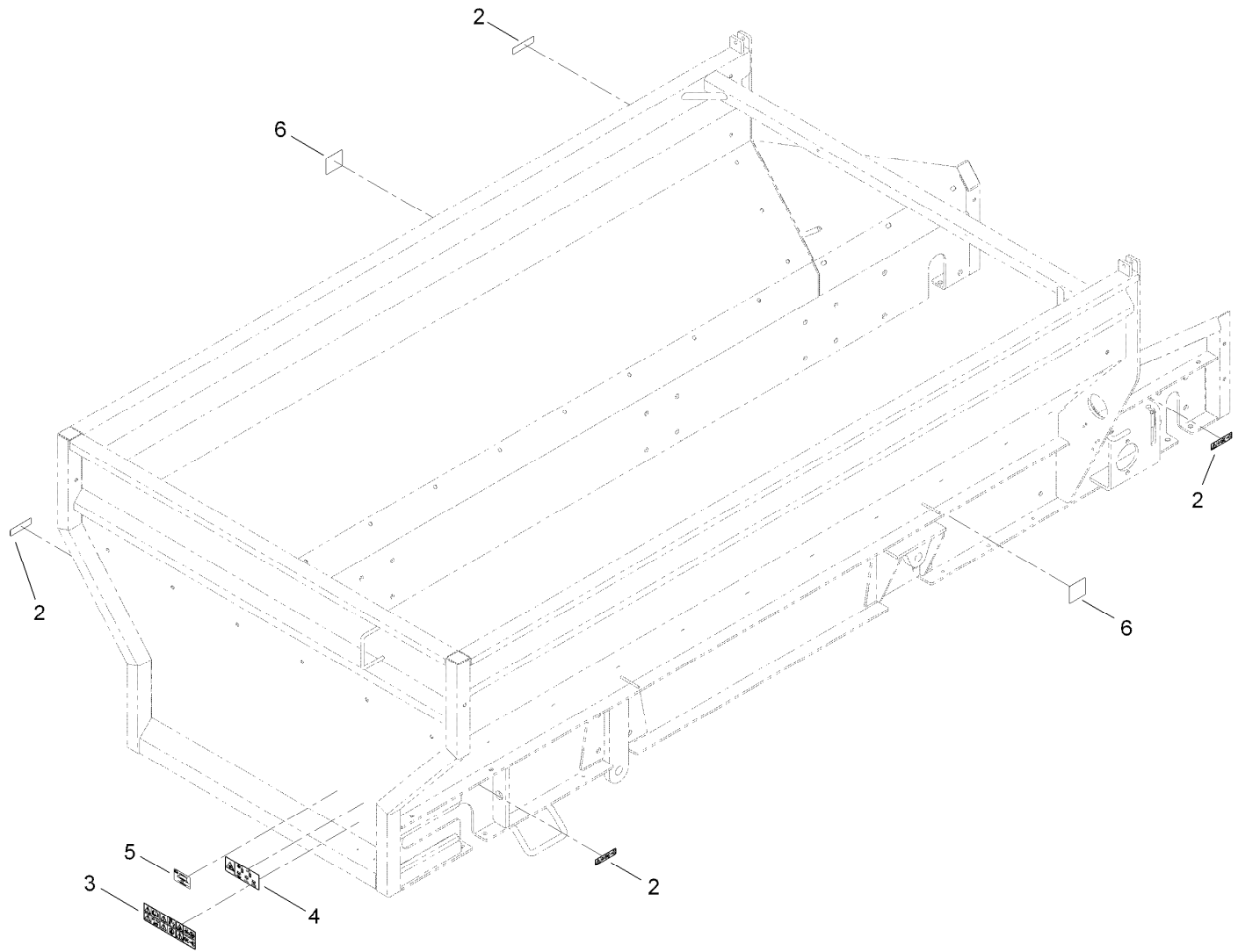
# Contents

Box Frame Assembly .....	4
Box Frame Decal Assembly No. 120-0890 .....	5
Attachment Clamp Assembly No. T36015800.....	6
Guard Assembly .....	7
Hitch Assembly .....	8
Belt and Skirting Assembly .....	9
Skirting Assembly.....	10
Conveyor Assembly .....	11
Chain Drive Assembly .....	12
Chain and Sprocket Assembly .....	13
Wheel Assembly .....	14
RH Shaft Assembly No. 120-0942 .....	15
Hub Assembly No. T54031039 .....	16
LH Brake Assembly No. 120-0818 .....	17
LH Shaft Assembly No. 120-0943 .....	18
RH Brake Assembly No. 120-0819 .....	19
Hydraulic Manifold Block and Fitting Assembly .....	20
Hydraulic Motor and Hose Assembly .....	21
Hydraulic Motor Assembly No. T0000-5303 .....	22
Hydraulic Cylinder and Manifold Block Assembly .....	23
Block Guard and Hose Assembly .....	24
Wireless Base and Emergency Stop Assembly.....	25
Wireless Remote Mounting Assembly .....	26
Brake Assembly .....	27



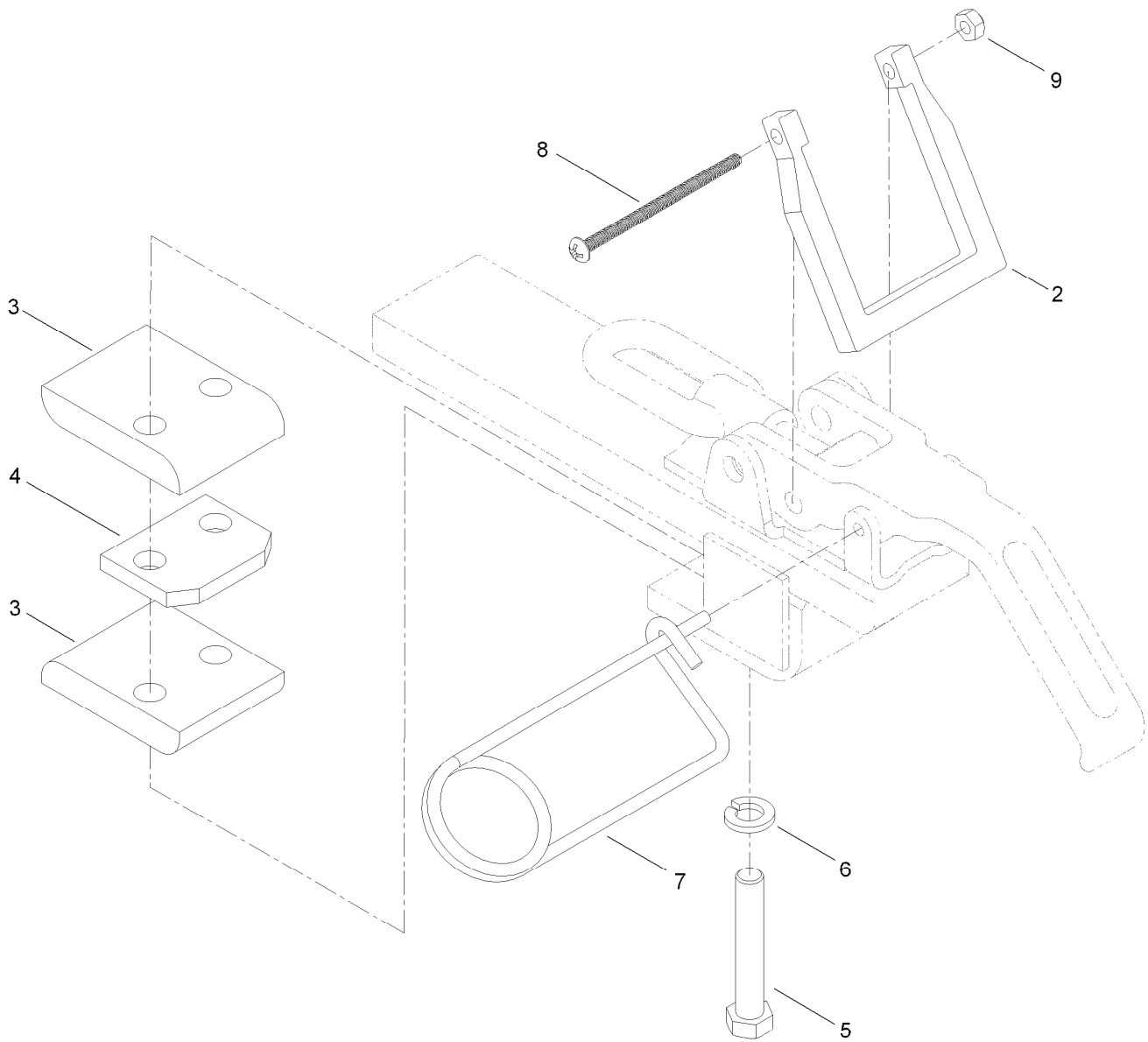
## Box Frame Assembly

Ref.	Part Number	Qty.	Description	Ref.	Part Number	Qty.	Description
1	120-0890	1	Box Frame ASM	12	322-11	2	Screw-HH
2	120-0891	1	Tailgate ASM	13	104-8300	2	Nut-Flange, NI
2:2	119-6838	2	Decal-Warning, Conveyor	14	3256-24	10	Washer-Flat
3	T36031200	1	Jack-Tailgate	15	323-14	5	Screw-HH
3:2	T36031210	1	Handle-Crank	16	104-8301	14	Nut-Flange, NI
5	32121-45	2	Pin-Spring	17	T36011650	2	Bar-Bridge
6	T36011220-01	1	Jack Crank ASM	18	114-4681	1	Screw-HHF
7	92-2678	1	Mirror-Convex	19	3234-42	6	Screw-HHF
7:1	322-2	1	Screw-HH	20	323-13	2	Screw-HH
7:2	3253-4	1	Washer-Lock	21	100-6116	8	Screw-HHF
8	T36011560	1	Arm-Mirror	22	99-5107	8	Nut-Lock
9	T36015790	2	Attachment Bracket ASM	23	3256-23	2	Washer-Flat
9:1	119-6872-01	1	Bracket-Attachment	24	119-6869	1	Decal-Tailgate Adjustment
9:2	T01-13489B	1	Tab-Spacer	25	66-6140	3	Decal
9:3	T36015200	2	Bar-Bearing	26	119-6803	3	Decal-Mh 400, Wireless
9:4	323-10	2	Screw-HH	30	T62021030	2	Latch-Spring
9:5	3253-21	2	Washer-Lock	31	321-6	8	Screw-HH
10	T36015800	2	Attachment Clamp ASM	32	104-7201	8	Nut-HF
11	T36011550-01	1	Sloped Panel ASM				



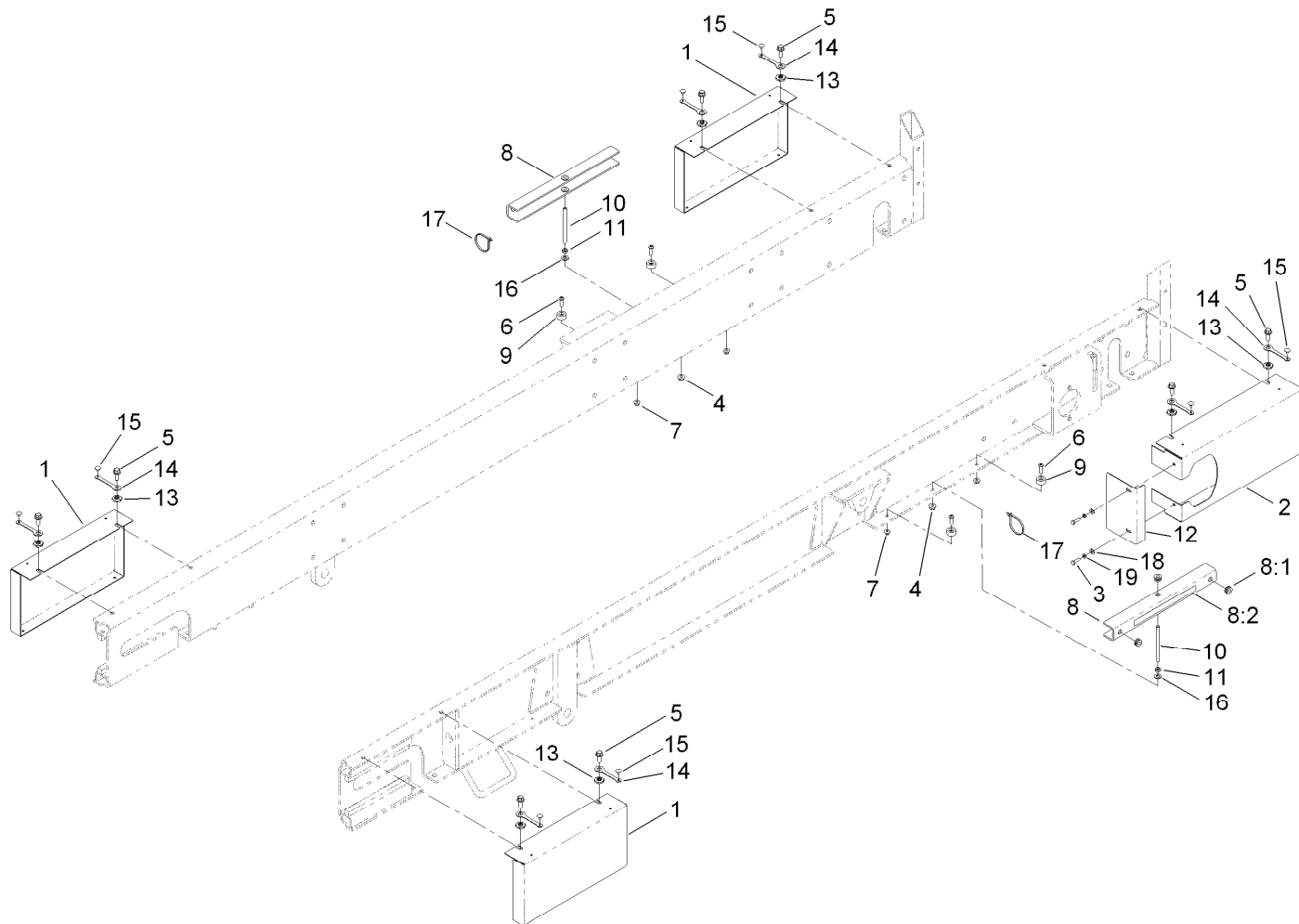
## Box Frame Decal Assembly No. 120-0890

<i>Ref.</i>	<i>Part Number</i>	<i>Qty.</i>	<i>Description</i>
2	119-0217	4	Decal-Danger
3	119-6806	1	Decal-Danger, Propass
4	119-6812	1	Decal-Warning, Tipping Hazard
5	119-6833	1	Decal-Max Load
6	93-9899	2	Decal-Warning



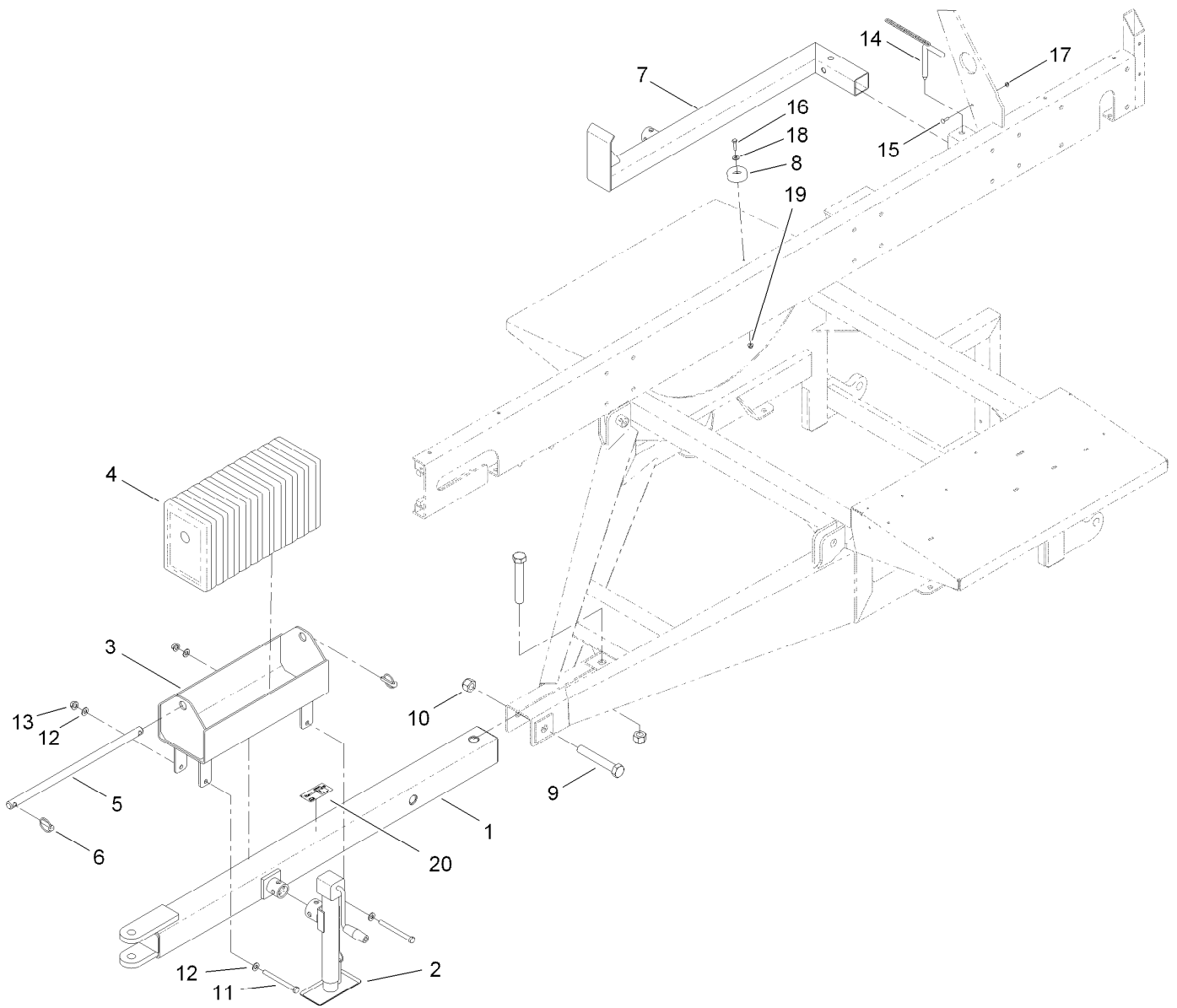
## Attachment Clamp Assembly No. T36015800

<i>Ref.</i>	<i>Part Number</i>	<i>Qty.</i>	<i>Description</i>
2	T36015794	1	Lock-Attachment Clamp
3	T36015200	2	Bar-Bearing
4	T01-13489B	1	Tab-Spacer
5	323-11	2	Screw-HH
6	3253-21	2	Washer-Lock
7	T0000-3247	1	Pin-Lock
8	120-0884	1	Screw-PRH
9	3296-2	1	Nut-Lock, NI



## Guard Assembly

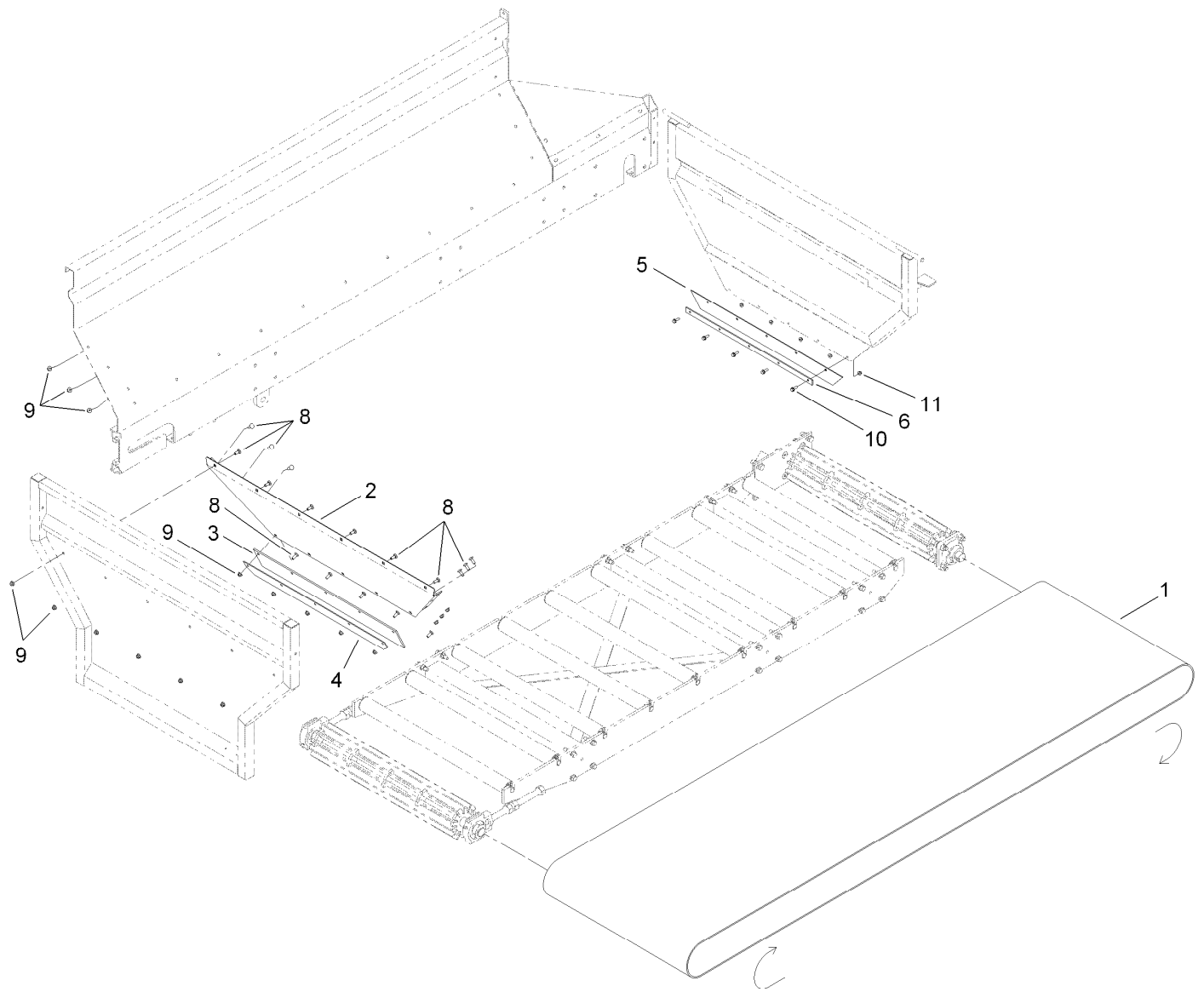
<i>Ref.</i>	<i>Part Number</i>	<i>Qty.</i>	<i>Description</i>	<i>Ref.</i>	<i>Part Number</i>	<i>Qty.</i>	<i>Description</i>
1	T36011630-03	3	Guard-Idler	10	T36011590	2	Pin-Lift Cylinder Stop
2	T36011640-03	1	Drive Guard ASM	11	3218-3	2	Nut-Jam
3	321-5	2	Screw-HH	12	T0000-5529-03	1	Guard-Motor, Drive
4	104-8301	2	Nut-Flange, NI	13	117-8347	8	Nut-Shoulder
5	3234-42	8	Screw-HHF	14	117-8339	8	Lanyard-3 Inch
6	3274-104	4	Screw-HSBH	15	146489	8	Rivet
7	104-8300	4	Nut-Flange, NI	16	3256-24	2	Washer-Flat
8	T36011580	2	Lift Cylinder Stop ASM	17	3290-379	2	Tie-Cable
8:1	92-5972	4	Grommet-Rubber	18	3256-22	2	Washer-Flat
8:2	93-9852	1	Decal-Warning	19	3253-3	2	Washer-Lock
9	T0001-3570	4	Spacer-Stop, Lift Cylinder				



## Hitch Assembly

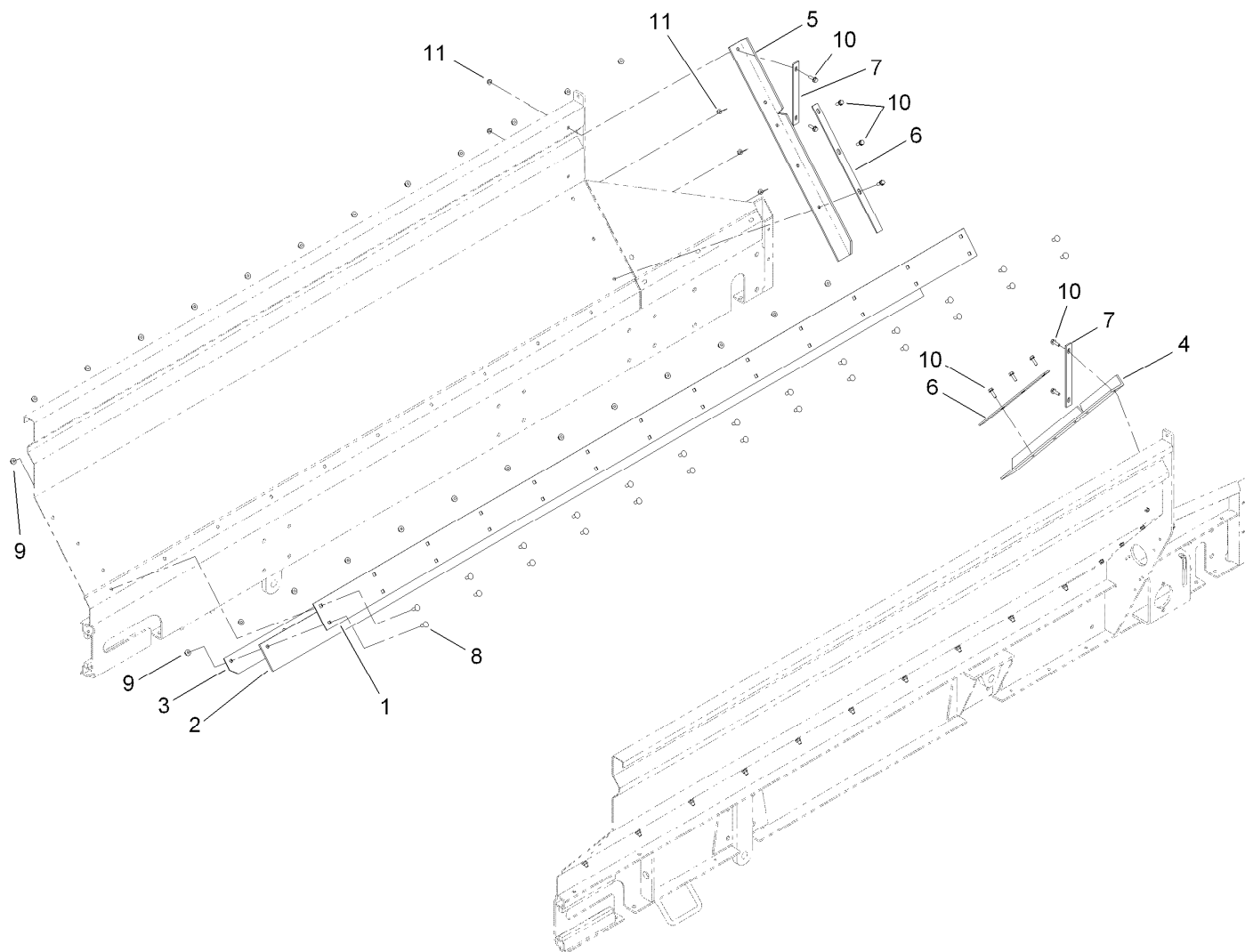
<i>Ref.</i>	<i>Part Number</i>	<i>Qty.</i>	<i>Description</i>	<i>Ref.</i>	<i>Part Number</i>	<i>Qty.</i>	<i>Description</i>
1	T36012112-01	1	Tube-Hitch	12	3256-26	4	Washer-Flat
2	T0000-3423	1	Jack-Sidewind	13	99-5107	2	Nut-Lock
3	T36028000-01	1	Weight Box ASM	14	T36011195	1	Pin ASM
4	119-6860-01	10	Casting-Counterweight	15	3229-2	1	Screw-CARR
5	T36028010-01	1	Shaft-Weight Box	16	322-6	1	Screw-HH
6	283-71	2	Pin-Lynch	17	104-7201	1	Nut-HF
7	T36011190-01	1	Jack Leg ASM	18	3256-3	1	Washer-Flat
8	108-1605	1	Bumper-Recess	19	104-8300	1	Nut-Flange, NI
9	120-0887	2	Screw-HH	20	119-6836	1	Decal-Propass, Weight Case
10	120-0888	2	Nut-HH				
11	325-22	2	Screw-HH				





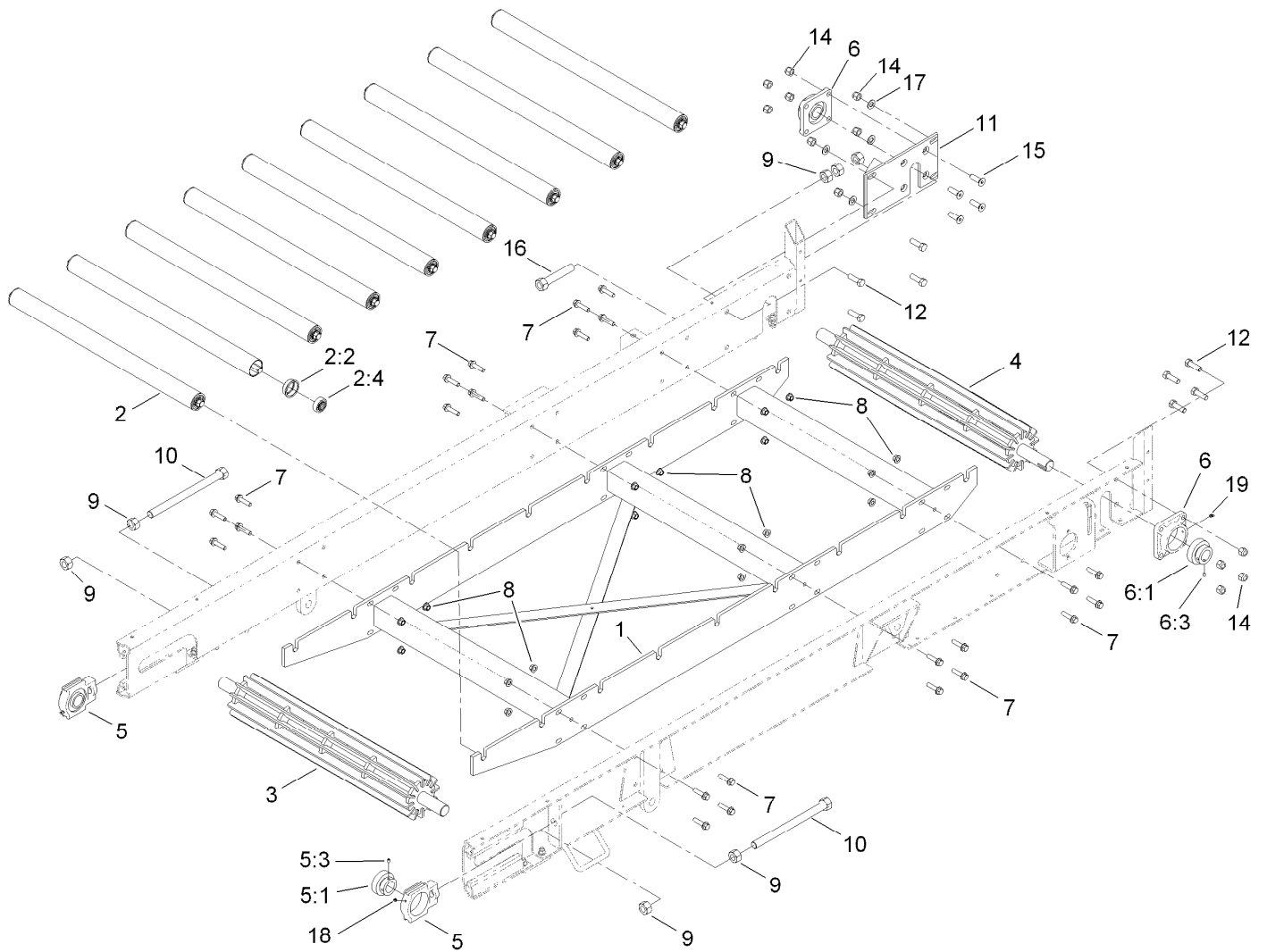
## Belt and Skirting Assembly

<i>Ref.</i>	<i>Part Number</i>	<i>Qty.</i>	<i>Description</i>
1	T60191215	1	Belt-Endless
2	T36011525-01	1	Sloped Panel ASM
3	T01-22002B	1	Skirt-Front Seal, Rubber
4	T36011535-01	1	Bar-Front Seal
5	T36013010	1	Seal-Belt
6	T36011230-01	1	Retainer-Belt Seal
8	3231-22	17	Screw-CARR
9	104-8301	17	Nut-Flange, NI
10	3234-29	5	Screw-HHF
11	104-8300	5	Nut-Flange, NI



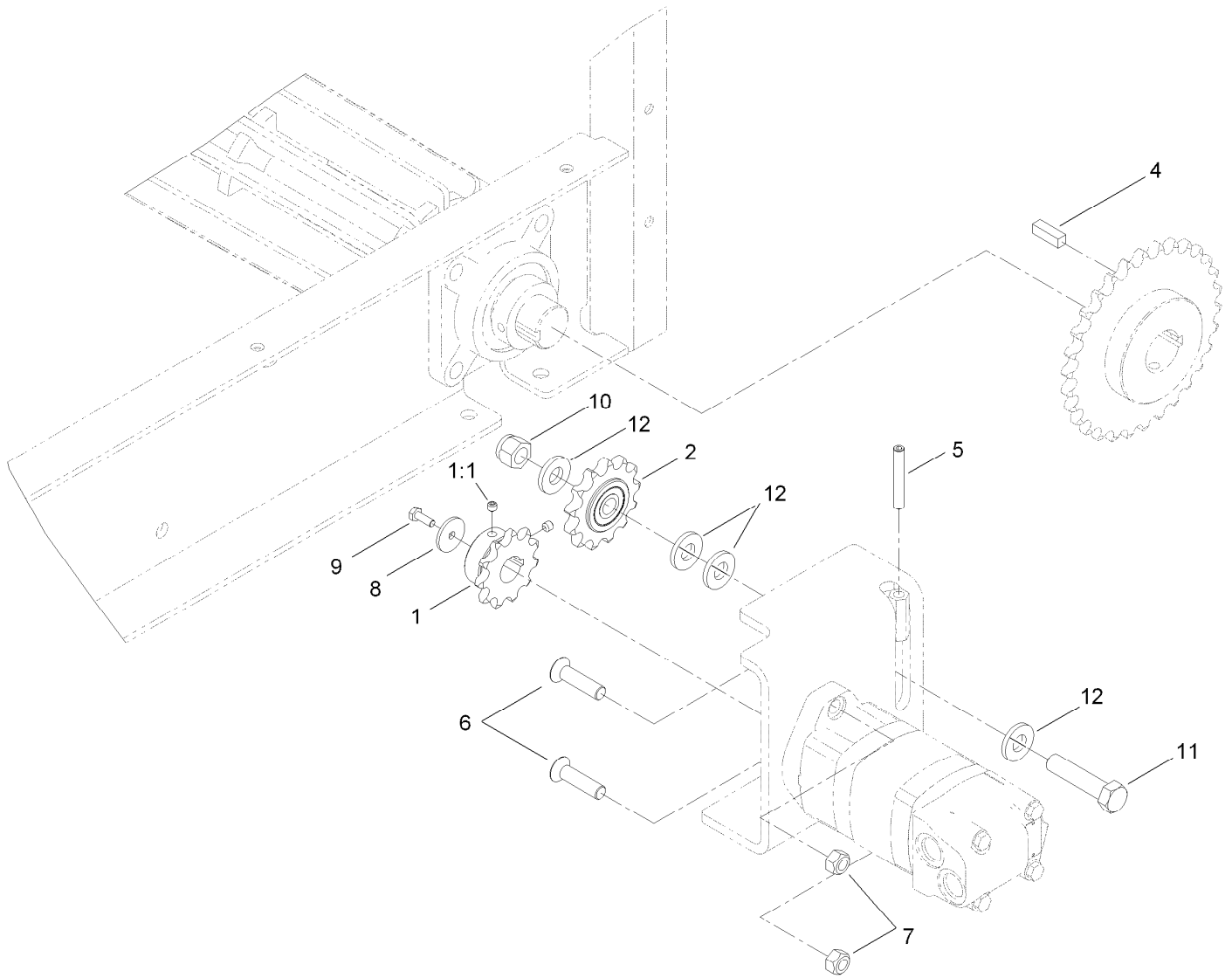
## Skirting Assembly

<b>Ref.</b>	<b>Part Number</b>	<b>Qty.</b>	<b>Description</b>
1	T36011520-01	2	Panel-Side Seal
2	T01-22000B	2	Seal-Rubber, Side
3	T36011530-01	2	Bar-Side Seal
4	T36011260	1	Seal-Tailgate, LH
5	T36011270	1	Seal-Tailgate, RH
6	T36011280-01	2	Bar-Seal, Lower
7	T36011290-01	2	Bar-Seal, Upper
8	3231-22	52	Screw-CARR
9	104-8301	52	Nut-Flange, NI
10	3234-29	10	Screw-HHF
11	104-8300	10	Nut-Flange, NI



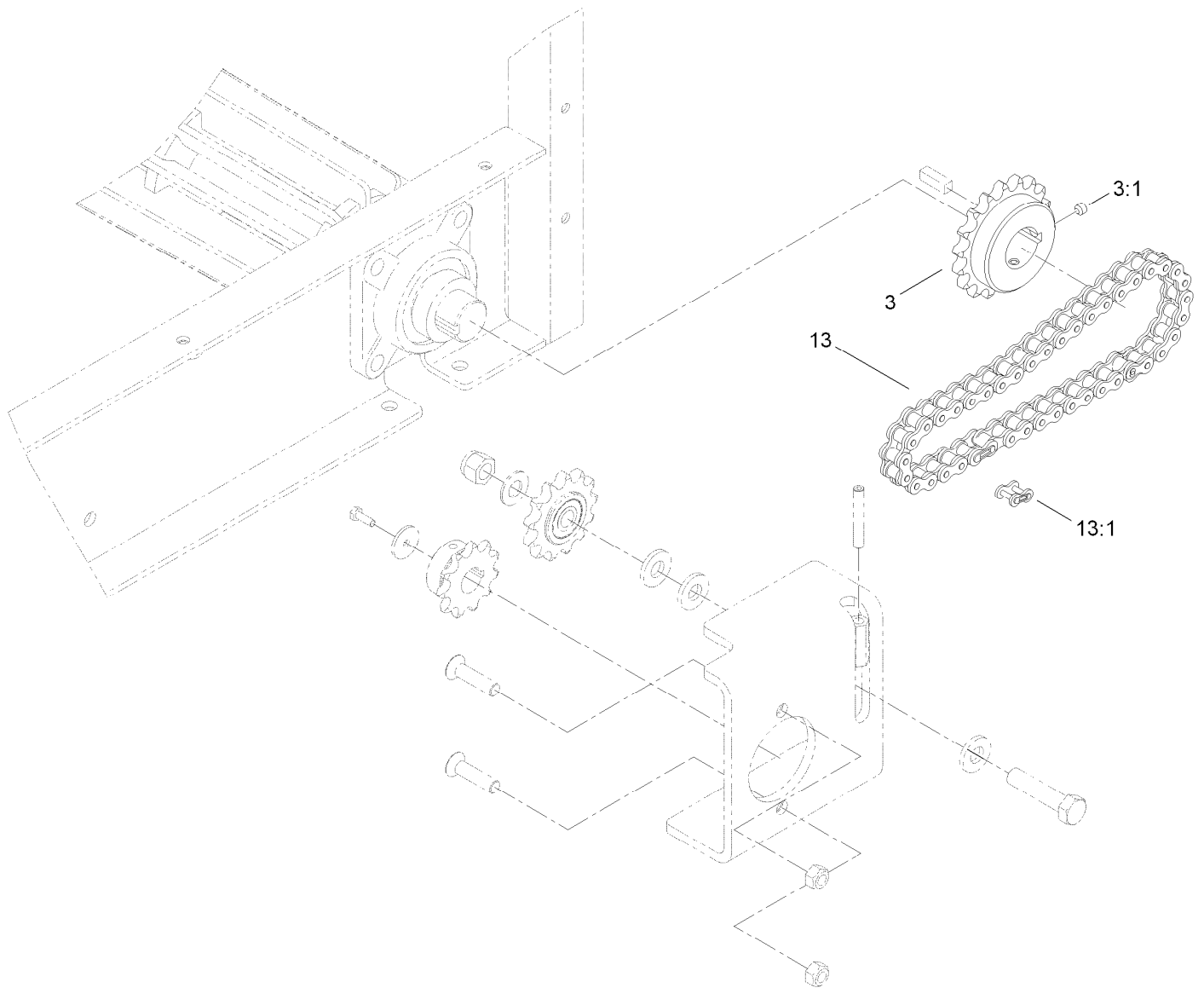
## Conveyor Assembly

Ref.	Part Number	Qty.	Description	Ref.	Part Number	Qty.	Description
1	T36011600-01	1	Roller Frame ASM	7	3234-27	24	Screw-HHF
2	T36011680	9	Belt Roller ASM	8	99-5107	24	Nut-Lock
2:2	T36011685	2	Insert-Roller	9	SG330081	7	Nut-Hex
2:4	T60111000	2	Bearing-Ball	10	T36011670	2	Tensioner Rod ASM
3	T36011620-03	1	Idler Roller ASM	11	T36011690	1	Mounting Plate ASM
4	119-6892-03	1	Drive Roller ASM	12	327-6	8	Screw-HH
5	T60114305	2	Take-Up Bearing ASM	14	3296-53	12	Nut-Lock, NI
5:1	120-0817	1	Bearing-Collar, Lock	15	120-0904	4	Screw-HSH
5:3	3246-17	1	Setscrew-HSH	16	T36011675	1	Lock Rod ASM
6	T60116355	2	4-Bolt Bearing ASM	17	3256-27	4	Washer-Flat
6:1	120-0817	1	Bearing-Collar, Lock	18	302-61	2	Fitting-Grease
6:3	3246-17	1	Setscrew-HSH	19	302-10	2	Fitting-Grease



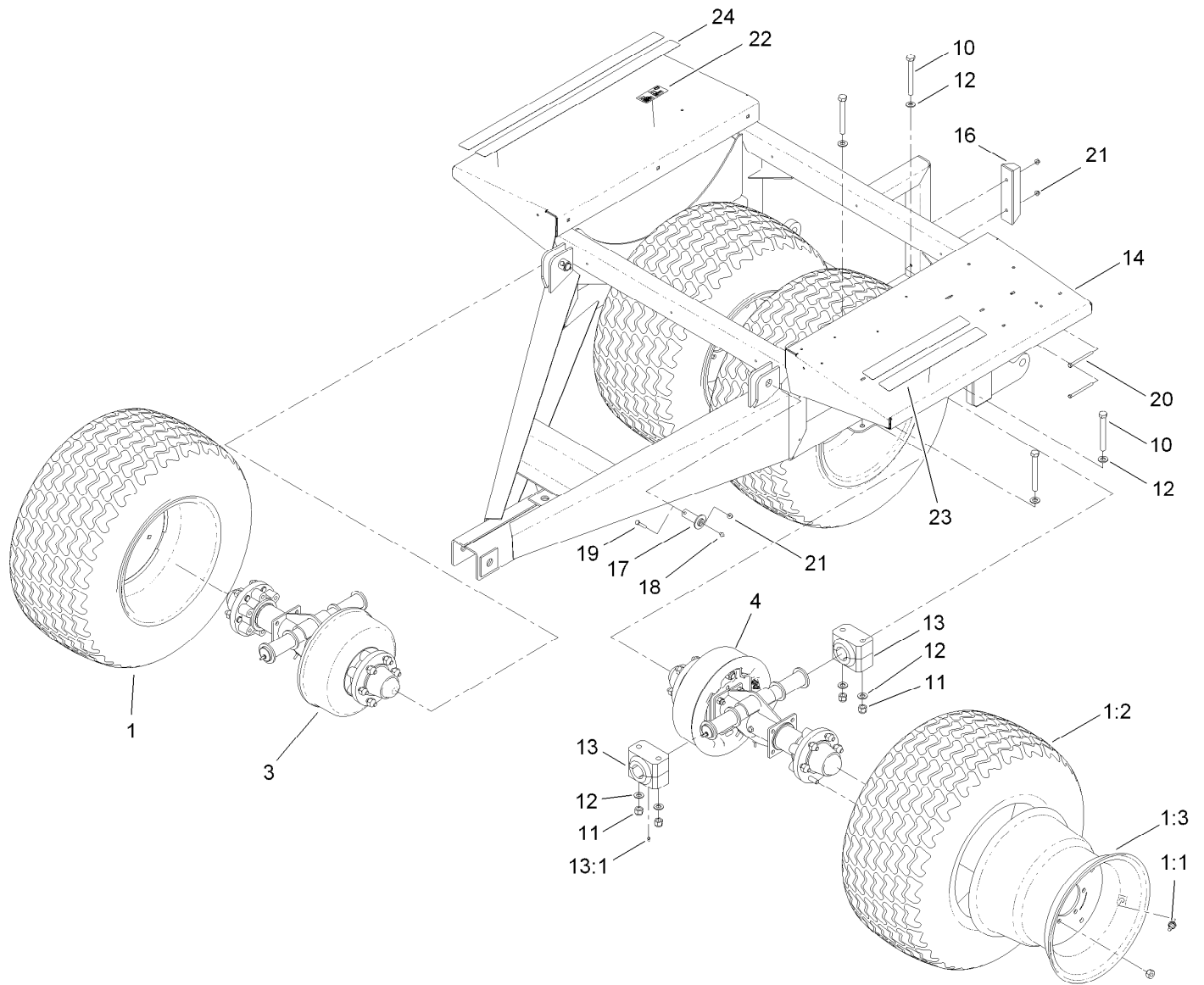
## Chain Drive Assembly

<i>Ref.</i>	<i>Part Number</i>	<i>Qty.</i>	<i>Description</i>
1	T60135010	1	Sprocket
1:1	3246-2	2	Screw-Set, HSH
2	T60134090	1	Sprocket
4	T36011810	1	Key
5	120-0909	1	Screw-HSH
6	120-0898	2	Screw-Fhhs
7	97-1206	2	Locknut
8	103995	1	Washer
9	321-4	1	Screw-HH
10	3296-53	1	Nut-Lock, NI
11	327-8	1	Screw-HH
12	99-7667	4	Washer-Flat



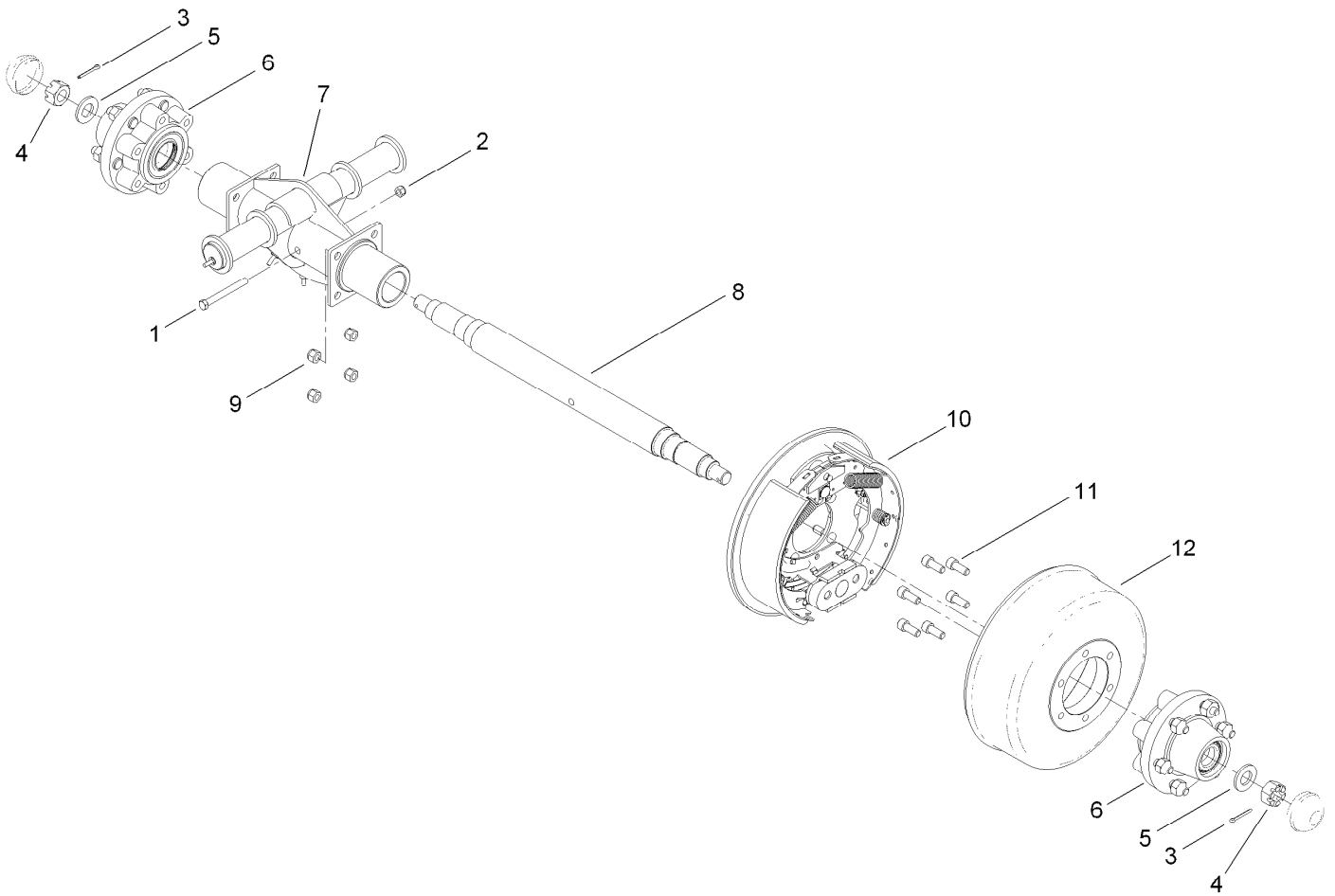
## Chain and Sprocket Assembly

<i>Ref.</i>	<i>Part Number</i>	<i>Qty.</i>	<i>Description</i>
3	T0000-8137	1	Sprocket
3:1	3247-2	2	Screw-Set, HSH
13	T36011805	1	Chain-Drive, 33 Inch
13:1	T60151016	1	Link-Connecting, #60



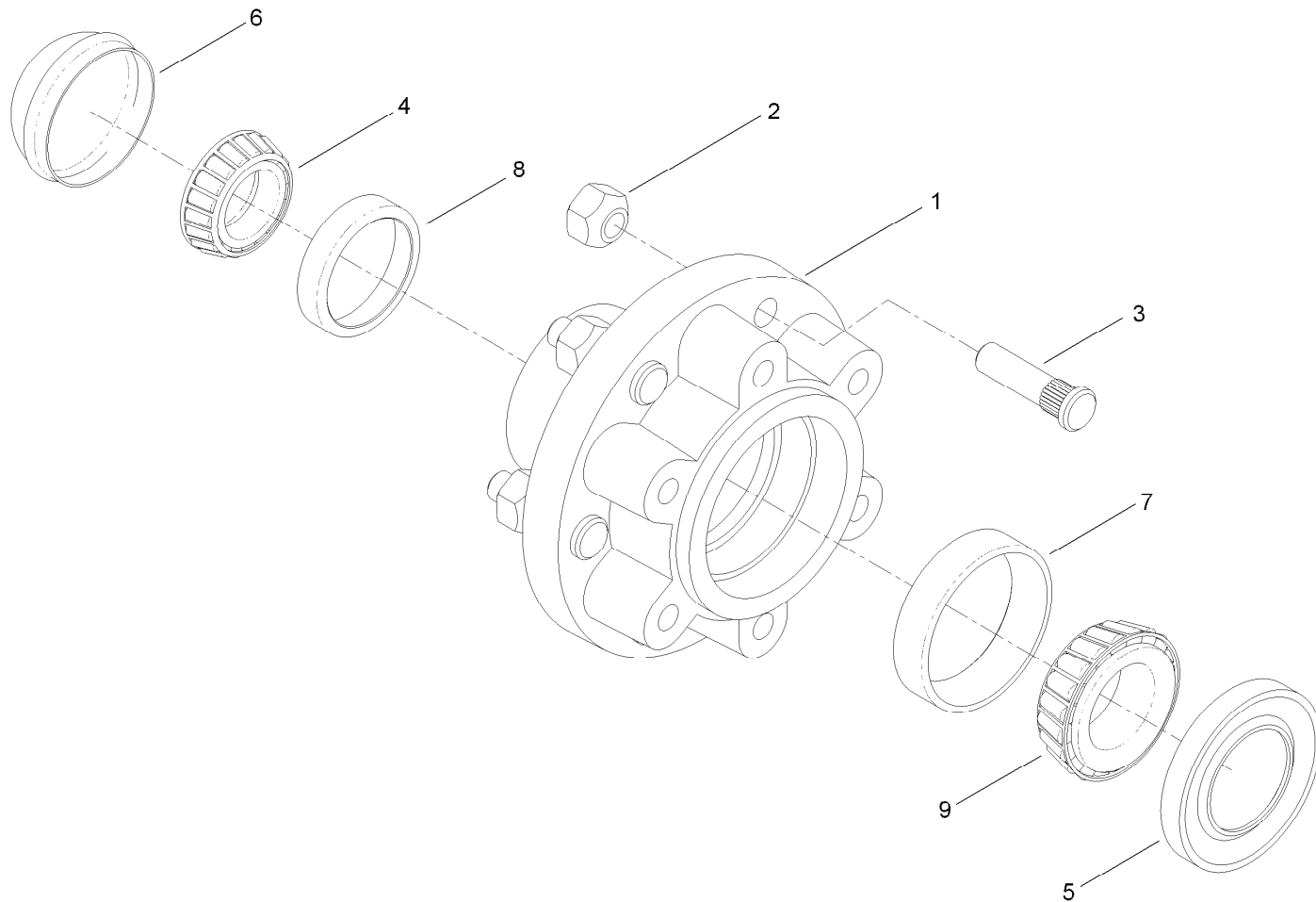
## Wheel Assembly

Ref.	Part Number	Qty.	Description	Ref.	Part Number	Qty.	Description
1	T0000-6872	4	Wheel And Tire ASM	14	T01-43164D-01	1	Frame ASM
1:1	T54011022	1	Wheel-Turf	16	T62011021	1	Bumper-Rubber
1:2	T68021100	1	Tire-Turf	17	T36012070-01	2	Pin-Hinge
1:3	232-24	1	Stem-Valve	18	302-2	2	Fitting-Grease
3	120-0942	1	RH Shaft ASM	19	322-10	2	Screw-HH
4	120-0943	1	LH Shaft ASM	20	322-19	2	Screw-HH
10	120-0923	8	Screw-HH	21	104-8300	4	Nut-Flange, NI
11	120-0924	8	Nut-Lock, NI	22	119-6835	1	Decal-Jack
12	119-1868	16	Washer	23	T36013050	2	Thread-Walk, Safety
13	T60111196	4	Bearing-Polyurethane	24	T36013052	2	Thread-Walk, Safety
13:1	302-19	1	Fitting-Grease				



## RH Shaft Assembly No. 120-0942

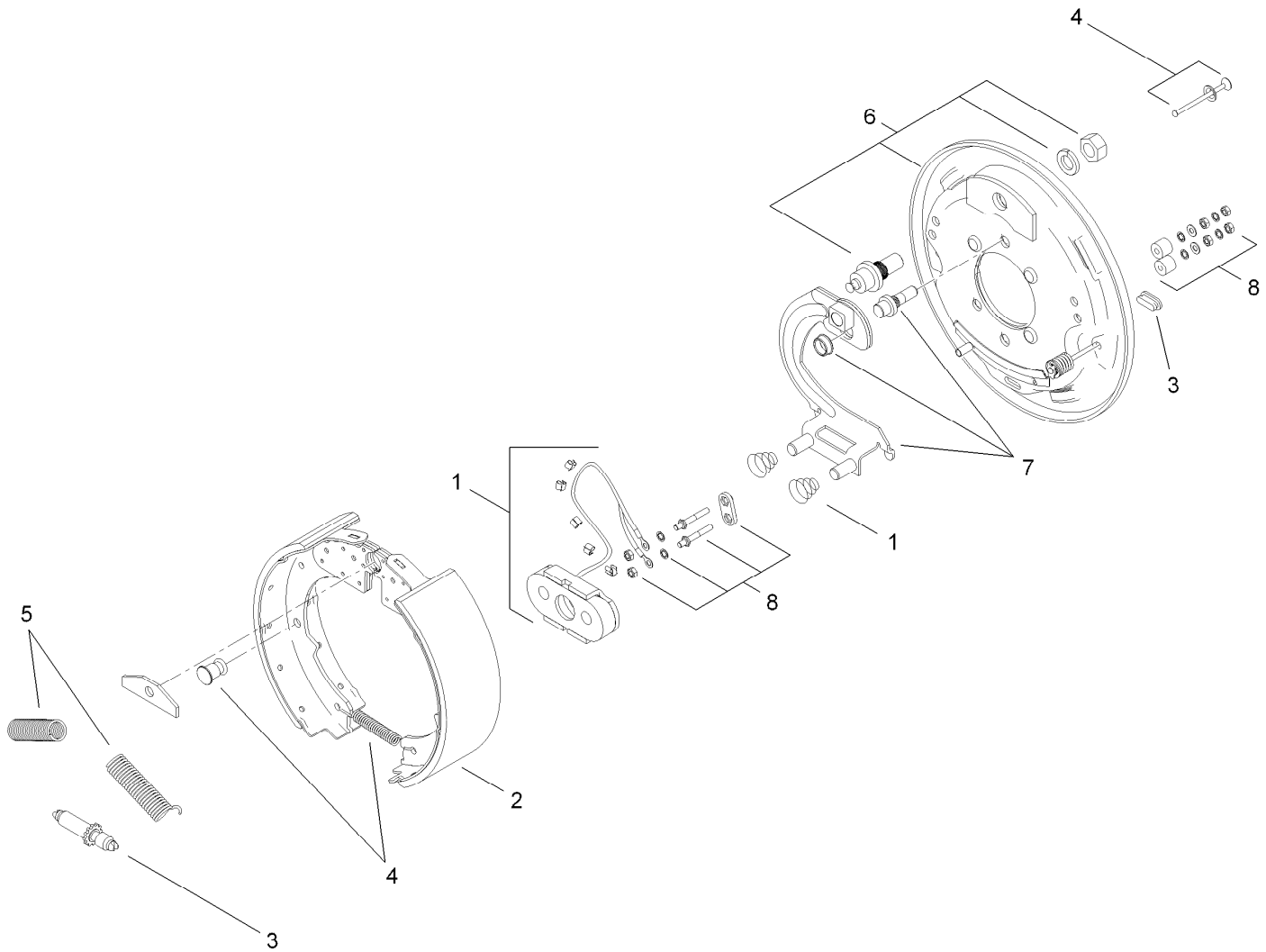
Ref.	Part Number	Qty.	Description
1	120-0922	1	Screw-HH
2	3296-76	1	Nut-Lock, NI
3	3272-23	2	Pin-Cotter
4	32136-11	2	Nut-Hex, Slot
5	T54051068	2	Washer-Spindle
6	T54031039	2	Hub ASM
7	T36012020-03	1	Walking Beam ASM
8	T54031102	1	Spindle-Double End
9	3296-19	4	Nut-Hex
10	120-0818	1	LH Brake ASM
11	120-0940	6	Screw-HSH
12	119-6871	1	Drum-Brake



## Hub Assembly No. T54031039

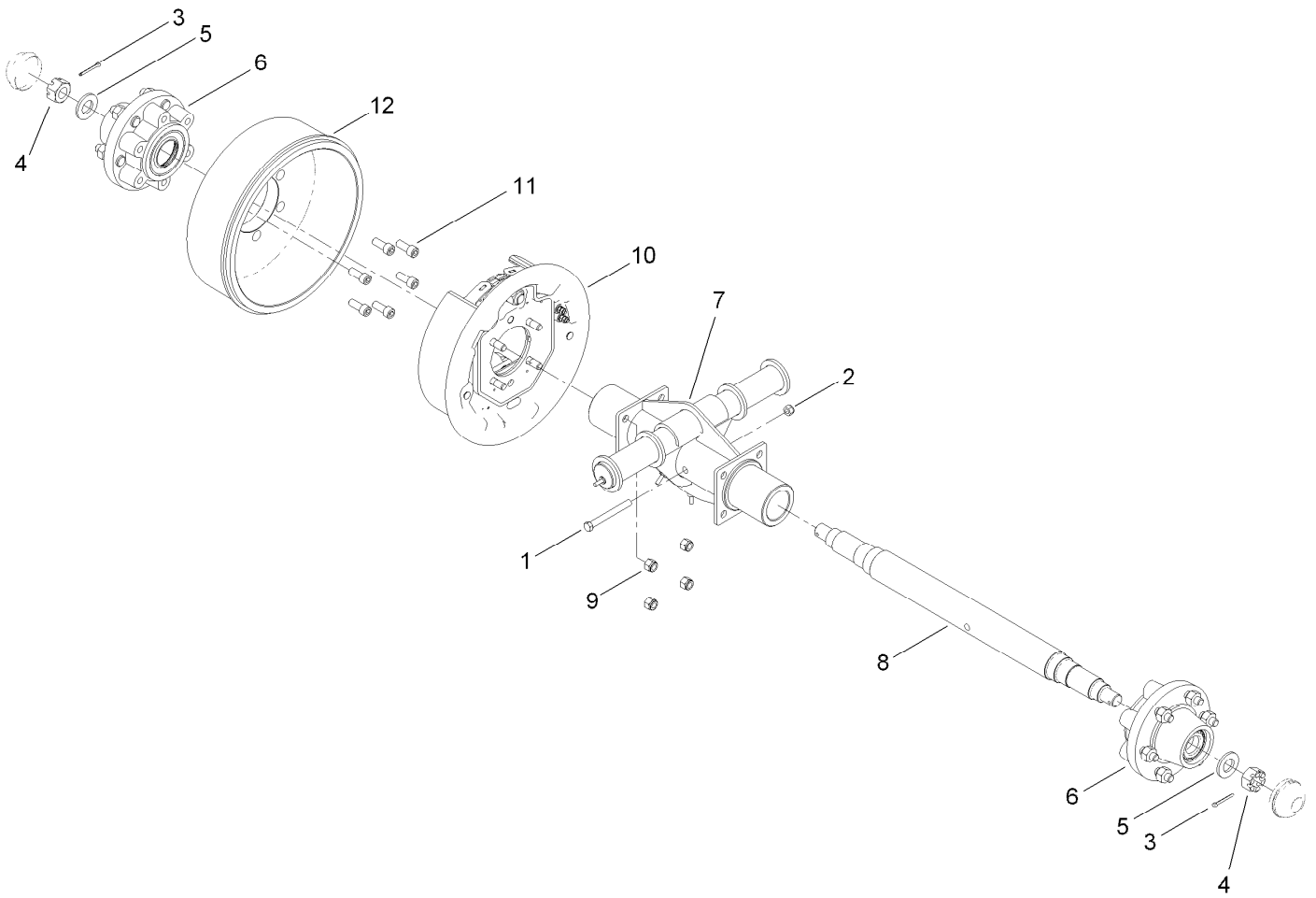
<i>Ref.</i>	<i>Part Number</i>	<i>Qty.</i>	<i>Description</i>
1	120-0911	1	Hub-Wheel
2	T54031040	6	Nut-Wheel
3	T54031042	6	Bolt-Stud, Hub ASM
4	T54051010	1	Bearing-Hub Out
5	T54051019	1	Seal-Bearing
6	T54051026	1	Cap-Hub (5000/6000 Lb.)
7	T54051037	1	Race-Bearing, Inner
8	T54051042	1	Races-Bearing, Out
9	T54051100	1	Bearing-Hub In





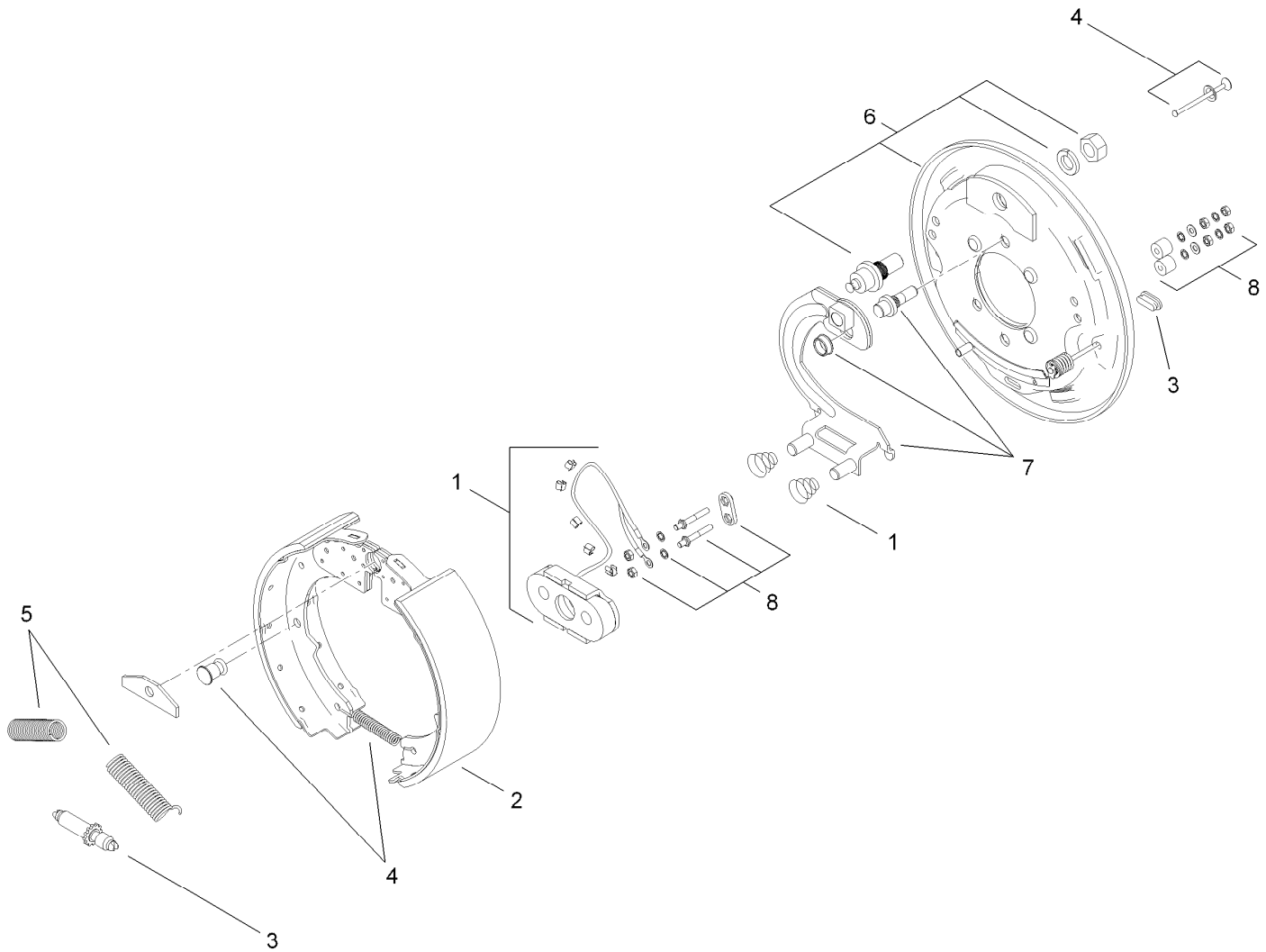
## LH Brake Assembly No. 120-0818

<i>Ref.</i>	<i>Part Number</i>	<i>Qty.</i>	<i>Description</i>
1	120-0822	1	Magnet Kit
2	120-0823	1	Shoe And Lining Kit
3	120-0824	1	Adjuster Kit
4	120-0825	1	Hold Down Kit
5	120-0826	1	Shoe Return Spring Kit
6	120-0827	1	Backing Plate Kit
7	120-0829	1	LH Lever Arm Kit
8	120-0830	1	Terminal Assembly Kit



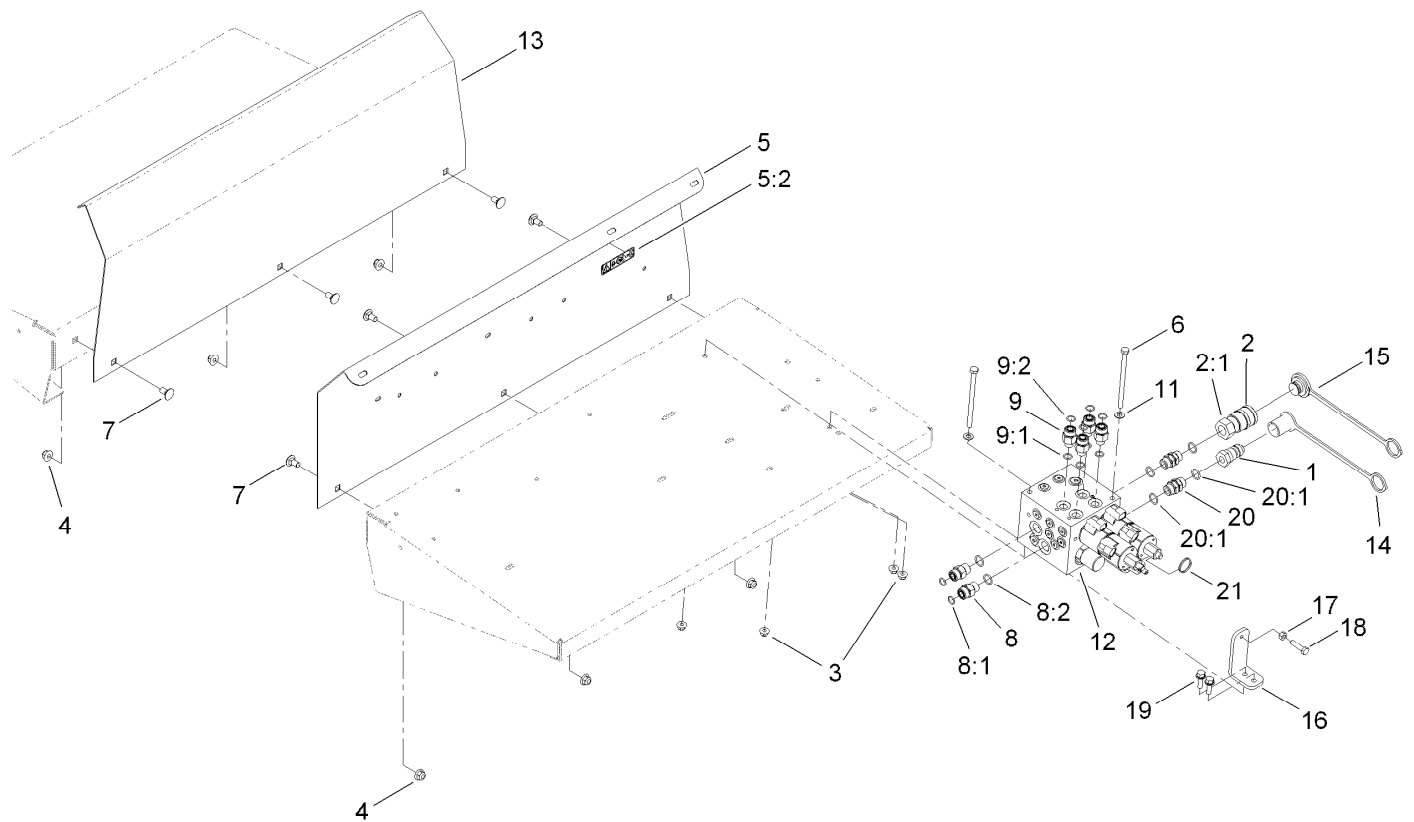
## LH Shaft Assembly No. 120-0943

<i>Ref.</i>	<i>Part Number</i>	<i>Qty.</i>	<i>Description</i>
1	120-0922	1	Screw-HH
2	3296-76	1	Nut-Lock, NI
3	3272-23	2	Pin-Cotter
4	32136-11	2	Nut-Hex, Slot
5	T54051068	2	Washer-Spindle
6	T54031039	2	Hub ASM
7	T36012020-03	1	Walking Beam ASM
8	T54031102	1	Spindle-Double End
9	3296-19	4	Nut-Hex
10	120-0819	1	RH Brake ASM
11	120-0940	6	Screw-HSH
12	119-6871	1	Drum-Brake



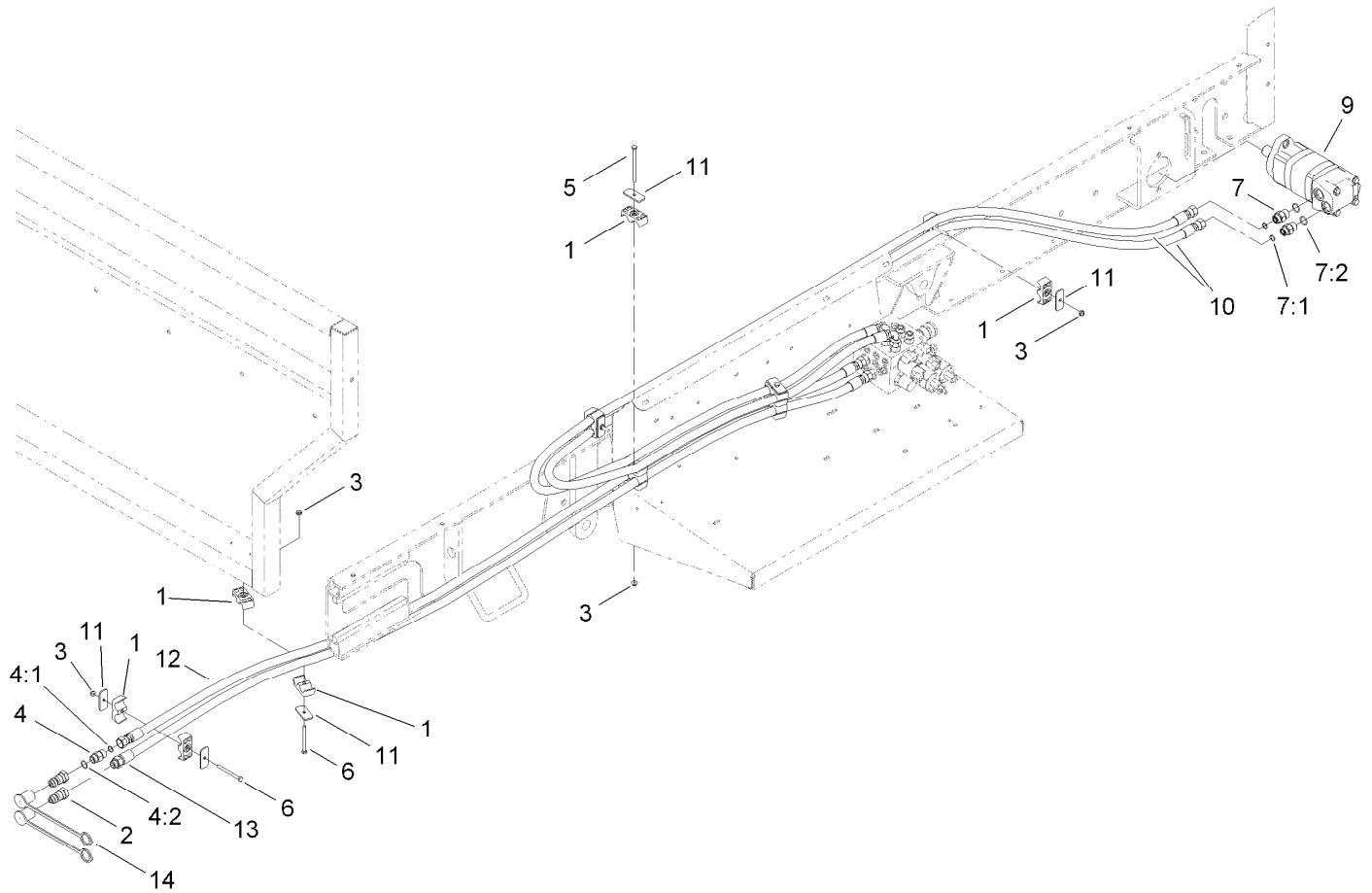
## RH Brake Assembly No. 120-0819

<i>Ref.</i>	<i>Part Number</i>	<i>Qty.</i>	<i>Description</i>
1	120-0822	1	Magnet Kit
2	120-0823	1	Shoe And Lining Kit
3	120-0824	1	Adjuster Kit
4	120-0825	1	Hold Down Kit
5	120-0826	1	Shoe Return Spring Kit
6	120-0827	1	Backing Plate Kit
7	120-0828	1	RH Lever Arm Kit
8	120-0830	1	Terminal Assembly Kit



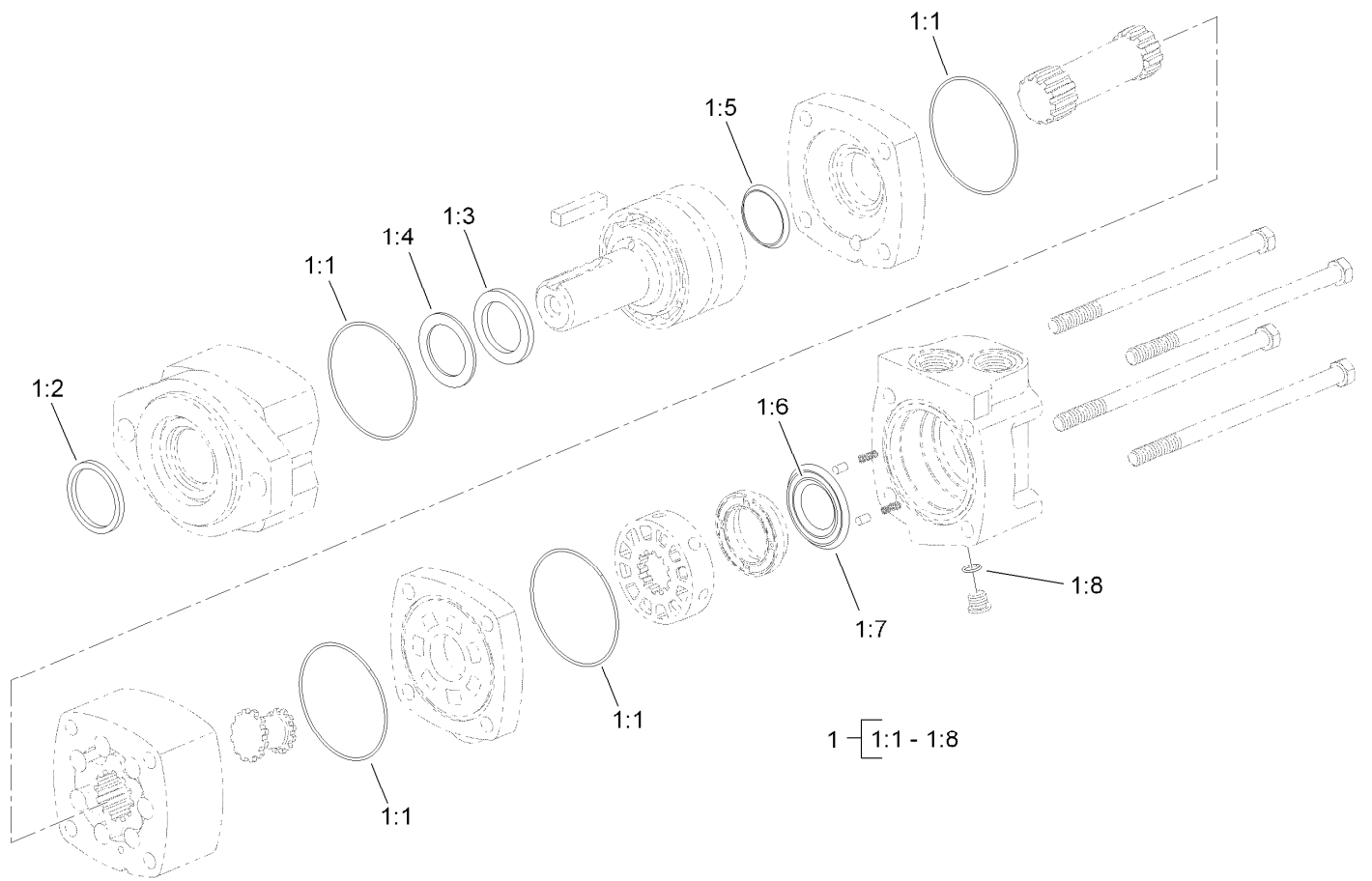
## Hydraulic Manifold Block and Fitting Assembly

<i>Ref.</i>	<i>Part Number</i>	<i>Qty.</i>	<i>Description</i>
1	98-4698	1	Male-Disconnect, Quick
2	98-4699	1	Female-Disconnect, Quick
2:1	100-4165	1	Seal Kit
3	104-8300	4	Nut-Flange, NI
4	104-8301	6	Nut-Flange, NI
5	120-0921	1	LH Fender Guard Service ASM
5:2	119-0217	1	Decal-Danger
6	322-29	2	Screw-HH
7	3231-1	6	Screw-CARR
8	340-4	2	Fitting-HYD, Straight
8:1	237-30	1	O-Ring
8:2	237-79	1	O-Ring
9	340-5	4	Fitting-Straight
9:1	237-42	1	O-Ring
9:2	237-30	1	O-Ring
11	3256-23	2	Washer-Flat
12	T0000-7792	1	HYD Block ASM
13	T36011720-01	1	Guard-Fender, RH
14	T56152152	1	Cap-Quick Connect, 1/2 Inch
15	T56152150	1	Plug-Quick Connect, 1/2 Inch
16	T0002-4579-01	1	Bracket-Override Manual
17	3217-6	1	Nut-Hex
18	322-6	1	Screw-HH
19	3234-29	2	Screw-HHF
20	95-3209	2	Fitting-Thread, Straight
20:1	237-79	2	O-Ring
21	106-1392	1	Ring-Retaining, Spiral (EXT)



## Hydraulic Motor and Hose Assembly

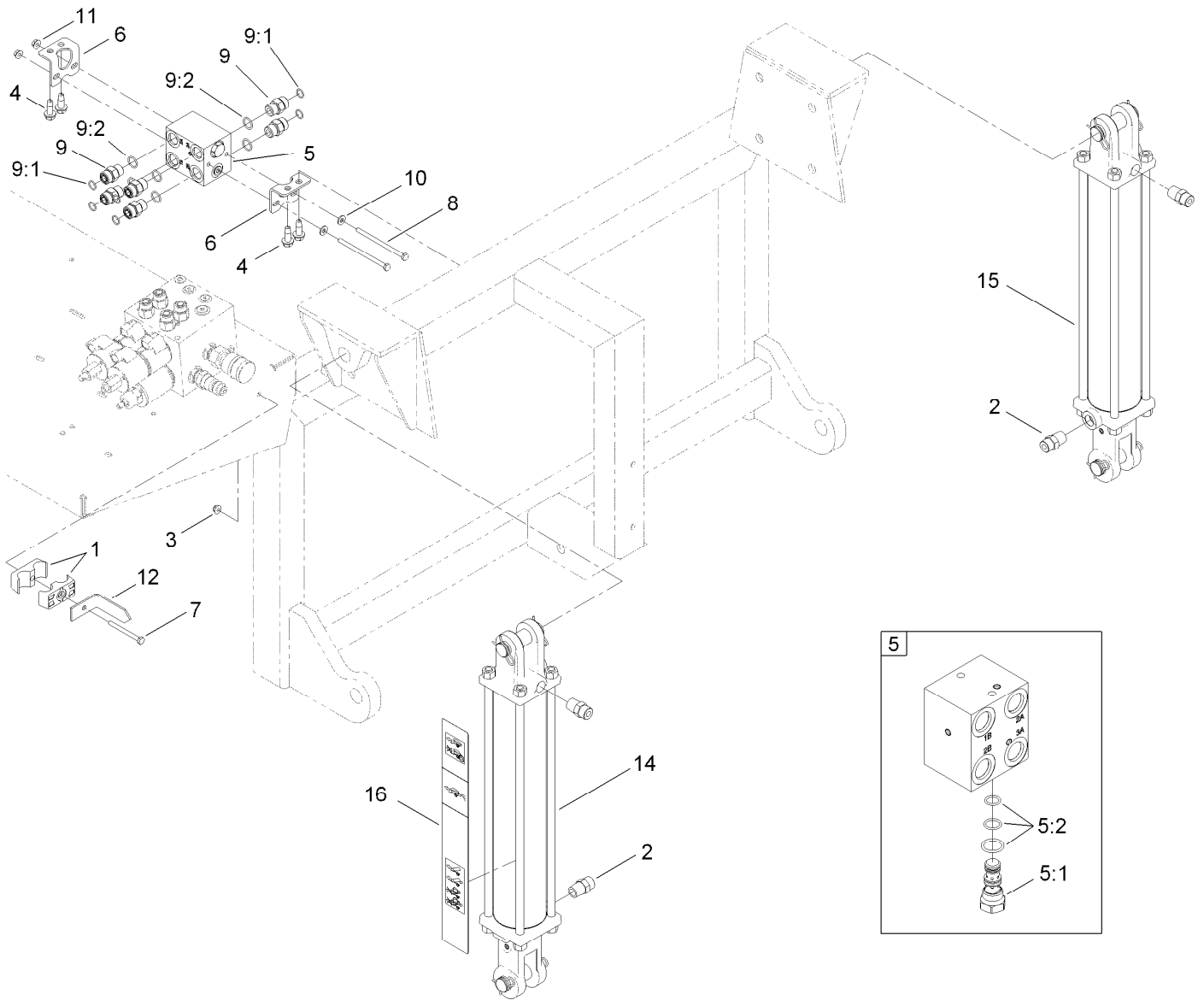
<i>Ref.</i>	<i>Part Number</i>	<i>Qty.</i>	<i>Description</i>	<i>Ref.</i>	<i>Part Number</i>	<i>Qty.</i>	<i>Description</i>
1	56-7974	16	Clamp-Tube	7:1	237-30	1	O-Ring
2	98-4698	2	Male-Disconnect, Quick	7:2	237-80	1	O-Ring
3	104-7201	6	Nut-HF	9	T0000-5303	1	HYD Motor ASM
4	119-6898	1	Valve-Check, HYD	10	120-0865	2	HYD Hose ASM
4:1	237-30	1	O-Ring	11	T36033040	7	Plate-Clamp
4:2	237-79	1	O-Ring	12	120-0866	1	HYD Hose ASM
5	321-19	2	Screw-HH	13	120-0867	1	HYD Hose ASM
6	321-23	2	Screw-HH	14	T56152152	2	Cap-Quick Connect, 1/2 Inch
7	340-6	2	Fitting-HYD, Straight				



## Hydraulic Motor Assembly No. T0000-5303

Ref.	Part Number	Qty.	Description
1	56-6890	1	Seal Kit
1:1		4	O-Ring ●
1:2		1	Seal-Exclusion, Shaft ●
1:3		1	Seal-Shaft ●
1:4		1	Ring-Back-Up ●
1:5		1	Seal-Face, Shaft ●
1:6		1	Seal-Face, Inner ●
1:7		1	Seal-Face, Outer ●
1:8		1	O-Ring ●

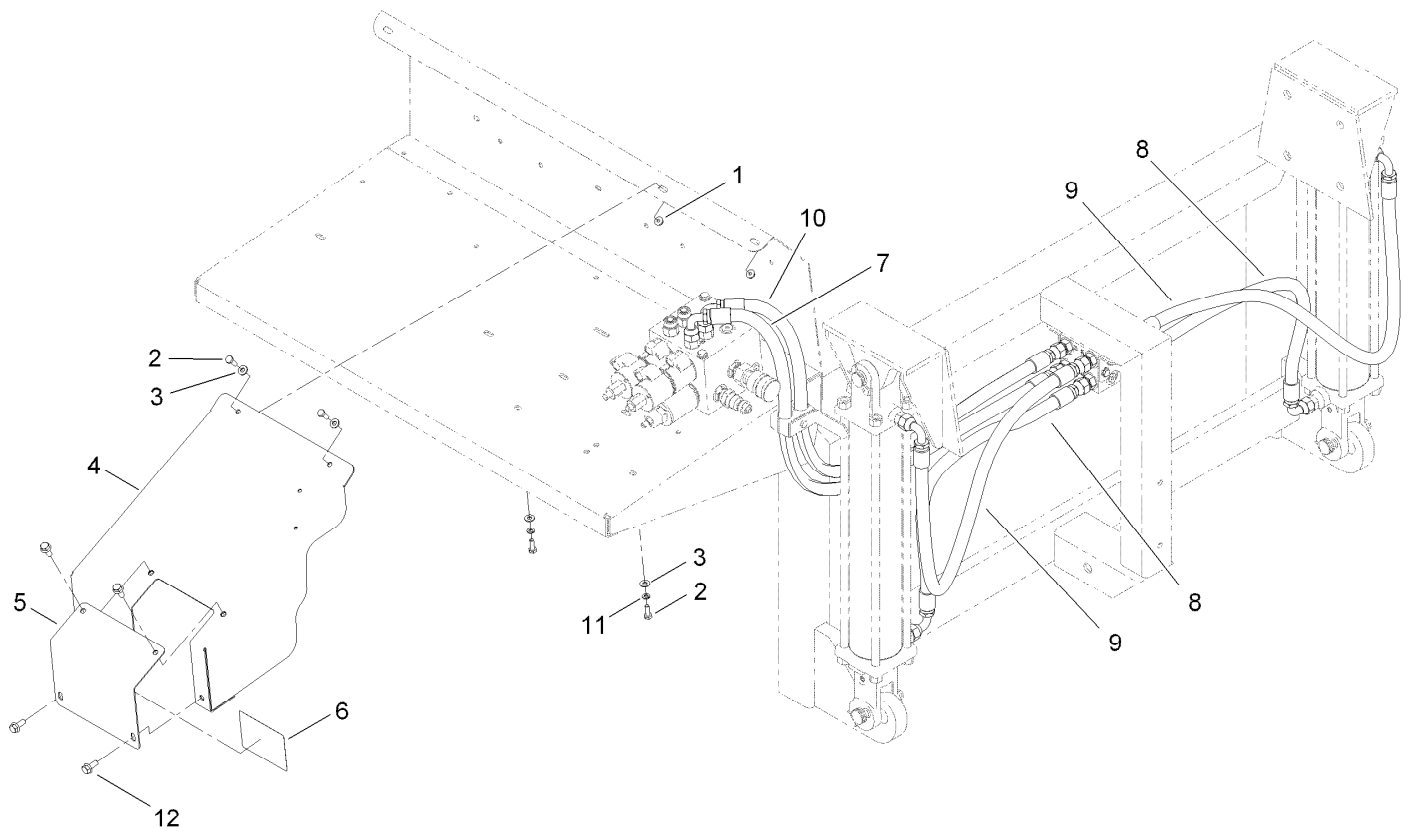
● Not serviced separately



## Hydraulic Cylinder and Manifold Block Assembly

Ref.	Part Number	Qty.	Description
1	56-7974	2	Clamp-Tube
2	93-5107	4	Fitting-Adapter
3	104-7201	1	Nut-HF
4	105-6245	2	Screw-Tapping
5	120-0849	1	Block-Manifold,Po Check
5:1	120-0873	1	Valve-Po Check
5:2	120-0886	1	Seal Kit
6	120-0875-03	2	Bracket-Mounting, Manifold
7	321-14	1	Screw-HH
8	321-34	2	Screw-HH

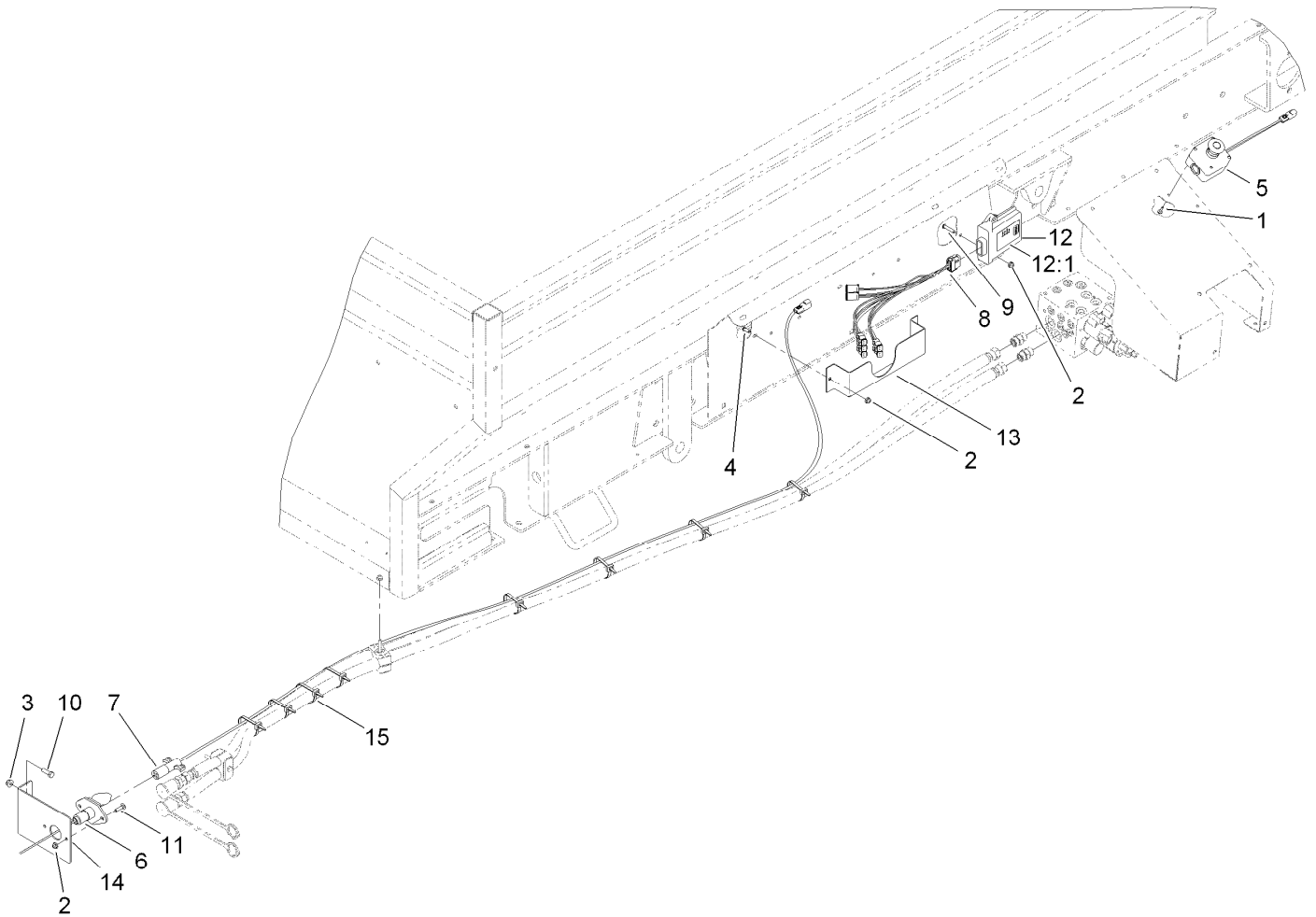
Ref.	Part Number	Qty.	Description
9	340-4	6	Fitting-HYD, Straight
9:1	237-30	1	O-Ring
9:2	237-79	1	O-Ring
10	3256-22	2	Washer-Flat
11	32128-33	2	Nut-HF
12	T36011570	1	Bar-Indicator, Lift
14	T56071160	1	HYD Cylinder ASM
15	T56071170	1	HYD Cylinder ASM
16	119-6863	1	Decal-Load Range



## Block Guard and Hose Assembly

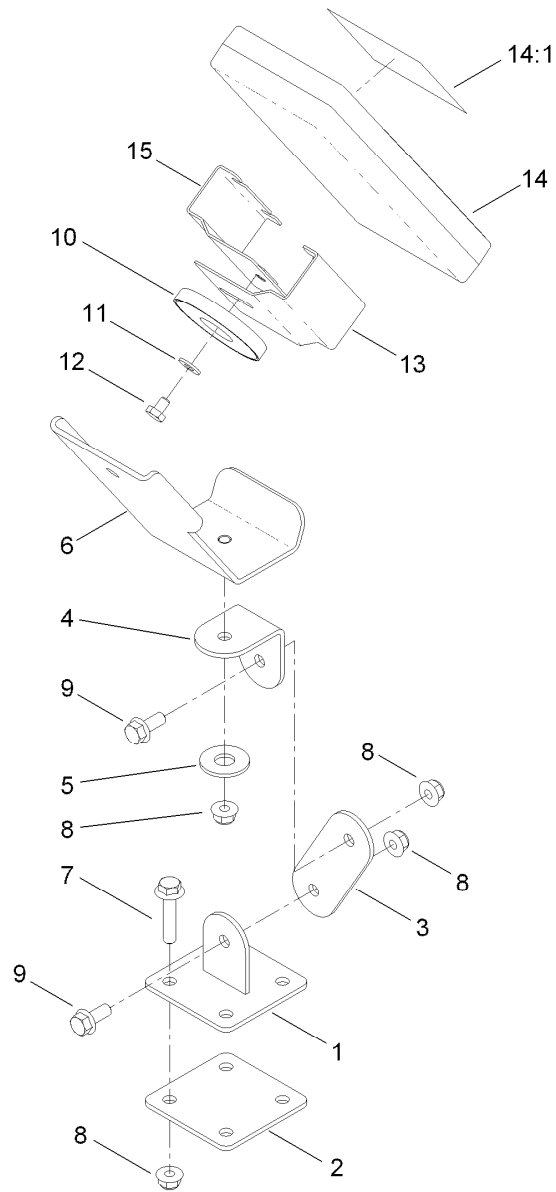
<i>Ref.</i>	<i>Part Number</i>	<i>Qty.</i>	<i>Description</i>
1	104-7201	2	Nut-HF
2	321-4	4	Screw-HH
3	3256-22	7	Washer-Flat
4	T0002-4581	1	Block Guard ASM
5	T0002-4578-01	1	Plate-Cover, Override
6	119-6832	1	Decal-Adjustment
7	120-0868	1	HYD Hose ASM
8	120-0869	2	HYD Hose ASM
9	120-0870	2	HYD Hose ASM
10	120-0872	1	HYD Hose ASM
11	3253-3	2	Washer-Lock
12	3234-47	4	Screw-HHF





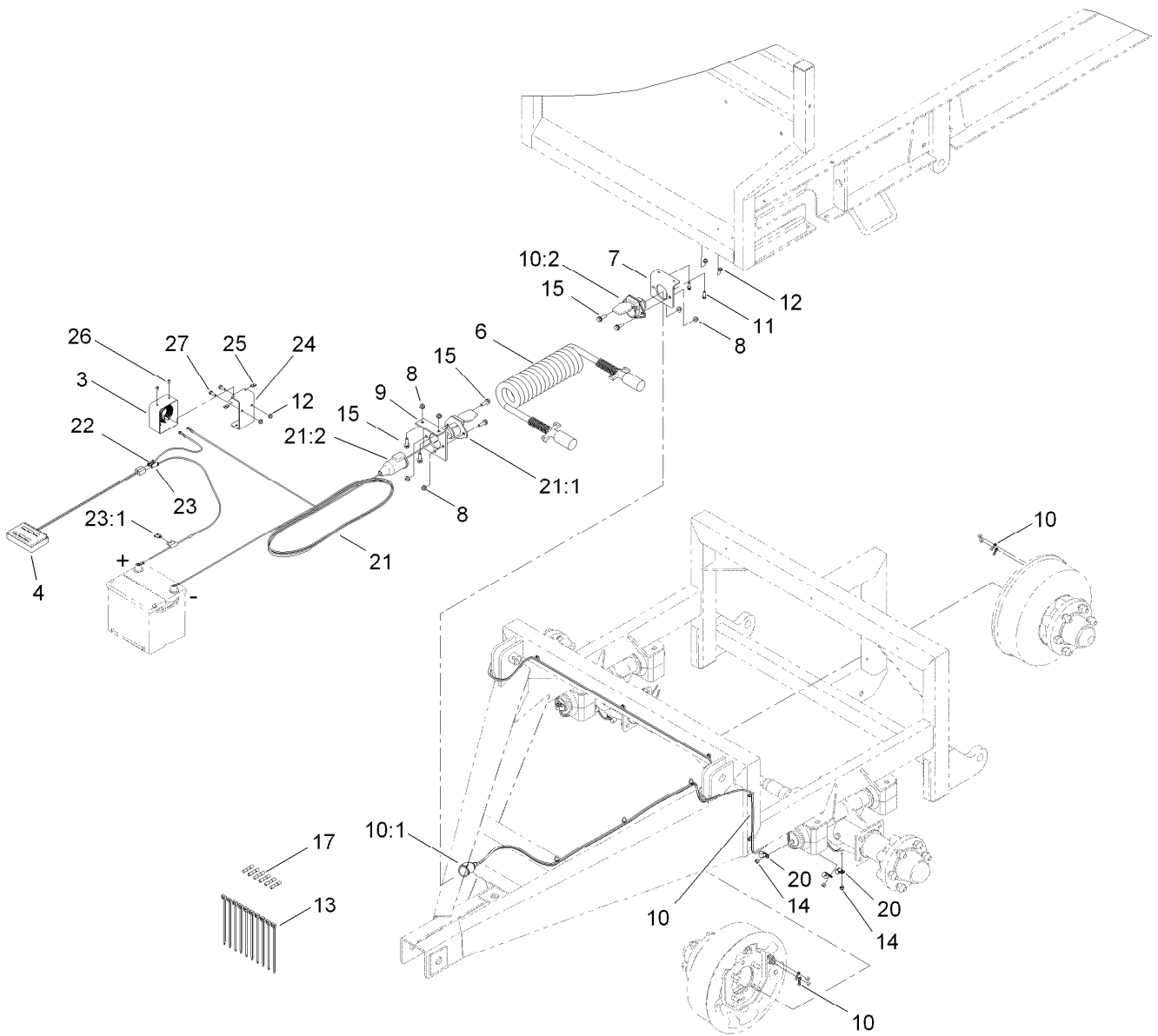
## Wireless Base and Emergency Stop Assembly

<i>Ref.</i>	<i>Part Number</i>	<i>Qty.</i>	<i>Description</i>	<i>Ref.</i>	<i>Part Number</i>	<i>Qty.</i>	<i>Description</i>
1	98-1375	2	Screw-HWH	9	120-0834	2	Screw-HSBH
2	104-7201	6	Nut-HF	10	322-5	2	Screw-HH
3	104-8300	2	Nut-Flange, NI	11	3229-2	2	Screw-CARR
4	119-6906	2	Screw-HSBH	12	T0002-1762	1	Wireless Base Unit
5	119-6909	1	Emergency Stop ASM	12:1	119-6830	1	Decal-Base Unit
6	120-0976	1	Harness-Wire, Power Lead	13	T36016084	1	Pocket-Control, Wireless
7	120-0926	1	Harness-Wire, Intermediate Power	14	T36054020	1	Bracket-Socket
8	119-6912	1	Harness-Wire Bulkhead	15	3290-378	8	Tie-Cable



## Wireless Remote Mounting Assembly

<i>Ref.</i>	<i>Part Number</i>	<i>Qty.</i>	<i>Description</i>	<i>Ref.</i>	<i>Part Number</i>	<i>Qty.</i>	<i>Description</i>
1	T0002-8707-01	1	Swivel Base ASM	9	3234-47	2	Screw-HHF
2	T0002-8704-01	1	Plate-Base, Swivel	10	T0002-8729	1	Magnet-Ceramic, Encased
3	T0002-8710-01	1	Plate-Mount, Wireless	11	3256-22	1	Washer-Flat
4	T0002-8712-01	1	Angle-Mount, Wireless	12	321-1	1	Screw-HH
5	T0000-2623	1	Washer-Poly, Ultra High Molecular Weight	13	T0002-9249-01	1	Sleeve-Half
6	T0002-8685-01	1	Controler Mount ASM	14	T0002-1761	1	Remote-Wireless
7	115-1794	4	Screw-HHF	14:1	119-6837	1	Decal-Wireless Console
8	104-8300	7	Nut-Flange, NI	15	T0002-9252-01	1	Half Sleeve ASM



## Brake Assembly

Ref.	Part Number	Qty.	Description	Ref.	Part Number	Qty.	Description
3	T54085020	1	Control-Load, Electric Brakes	15	3234-29	6	Screw-HHF
4	T54085030	1	Control-Foot, Electric Brakes	17	32180-046	6	Splice-Heatshrink Covered
6	T58071132	1	Cable-Coil, 12 Ft.	20	2412-73	6	Clamp-R
7	120-0892	1	Bracket-Connector	21	120-0958	1	Harness-Wire, Brake (Trailer Battery)
8	104-8300	6	Nut-Flange, NI	21:1	32160-322	1	Connector-Trailer, 7M
9	T36016080	1	Bracket-Tractor	21:2	120-0876	1	Boot-Socket
10	120-0802	1	Harness-Wire, Electric Brakes	22	120-0959	1	Harness-Wire, Brake (Rheostat-Pedal)
10:1	120-0876	1	Boot-Socket	23	120-0960	1	Wire-Brake, Pedal (Battery)
10:2	32160-322	1	Connector-Trailer, 7M	23:1	218-578	1	Fuse-Blade, 10 Amp
11	115-5103	2	Screw-HHF	24	120-0938-03	1	Bracket-Controller, Load
12	104-7201	4	Nut-HF	25	701493	2	Nut-Speed
13	3290-378	10	Tie-Cable	26	3251-1	2	Screw-PPH
14	3296-42	6	Nut-Lock, NI	27	321-4	2	Screw-HH



**Count on it.**