



Count on it.

Parts Catalog

Greensmaster® Flex™ 21

Traction Unit

Model No. 04024—Serial No. 310002001 and Up

Ordering Replacement Parts

To order replacement parts, please supply the part number, the quantity, and the description of each part desired.

Understanding Reference Numbers

Each identified part in an illustration has a reference number. The reference number for a part also appears in the parts list, along with other information about the part.

This catalog uses two special reference number formats, one to indicate parts in a service assembly and another to indicate the quantity of a given part in an illustration.

Service Assembly Reference Numbers

Parts in service assemblies have reference numbers in the form a:b. The a represents the reference number of the entire service assembly and the b represents a sequential number unique to each part within the service assembly.

For example, a wheel assembly might be identified by reference number 6, the tire by 6:1, the valve by 6:2, and the wheel by 6:3. When you order the assembly identified by reference number 6, you receive all parts identified by reference numbers 6:1, 6:2, and 6:3. However, you may also order any part individually. Reference numbers of this type appear in illustration and in parts lists.

Reference Numbers Indicating Quantity

In an illustration, if a reference number indicates more than one part, the reference number has the form nX y. The n represents the quantity of the part, the X is the multiplication symbol, and the y represents the reference number.

For example, in an illustration, the reference number 2X 37 means that two of the parts identified by reference number 37 are indicated.

List of Abbreviations

AR: as required

ASM: assembly

BBC: blade brake control

BHTF: button head thread forming

CARR: carriage

CCW: counter clockwise

CW: clockwise

DEG: degrees

ECM: electronic control module

EXT: external

FH: flat head

GA: gauge

HD: heavy-duty

HF: hex flange

HH: hex head

HHF: hex head flange

HHFTF: hex head flange thread forming

HJ: hex jam

HLH: hex lag head

HOC: height-of-cut

HSBH: hex socket button head

HSFH: hex socket flat head

HSH: hex socket head

HWH: hex washer head

HWHTF: hex washer head thread forming

HYD: hydraulic

LH: left hand

NI: nylon insert

NPTF: national pipe thread fine

PFH: phillips flat head

PPH: phillips pan head

PPHTF: phillips pan head thread forming

PRH: phillips round head

PTH: phillips truss head

PTO: power-take-off

RH: right hand

ROPS: roll-over protection system

RRB: rear roller brush

SFH: slotted fillister head

SHH: slotted hex head

SHWH: slotted hex washer head

SPH: slotted pan head

SQH: square head

SRH: slotted round head

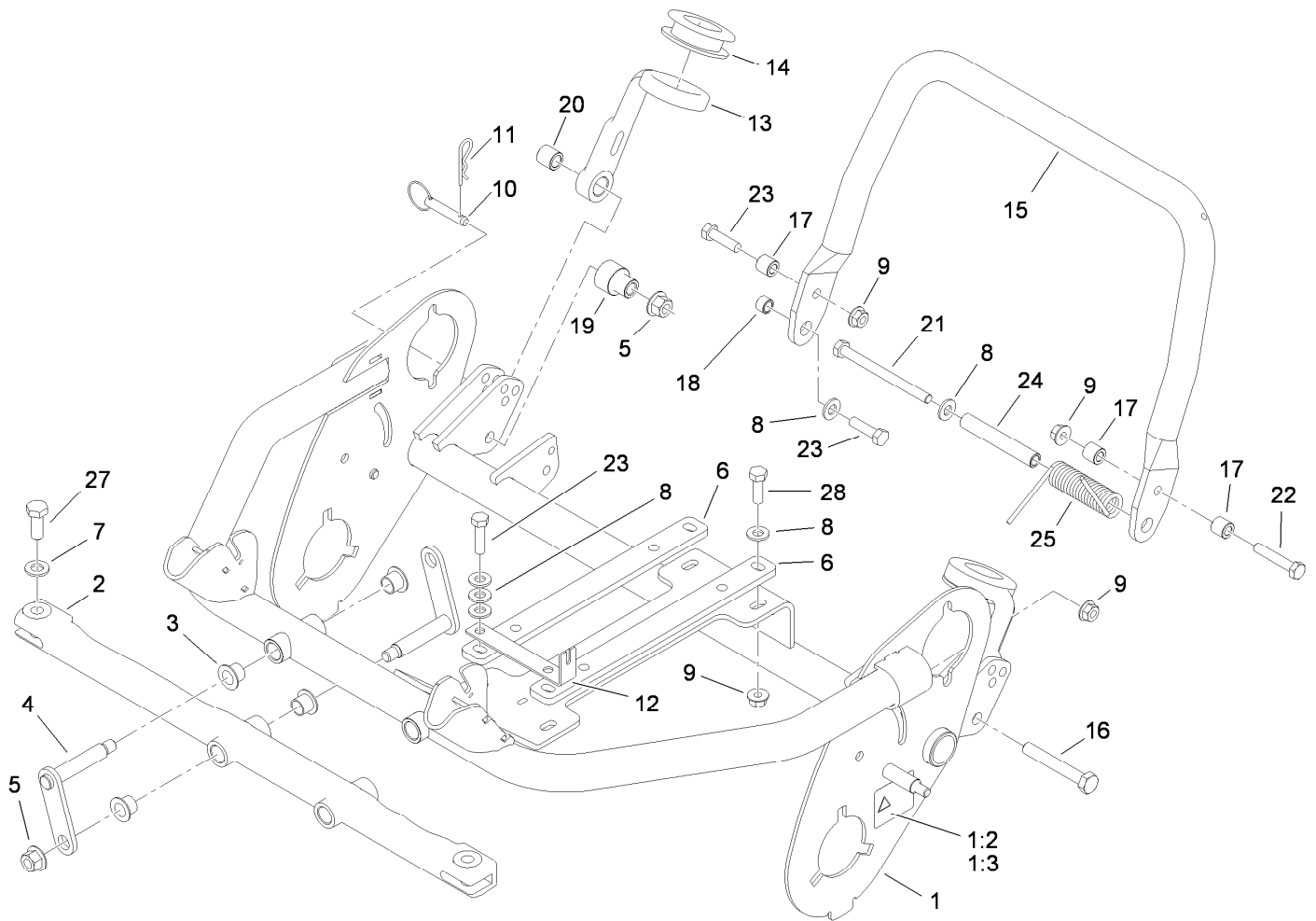
STD: standard

TAP: self tapping

TTH: torx truss head

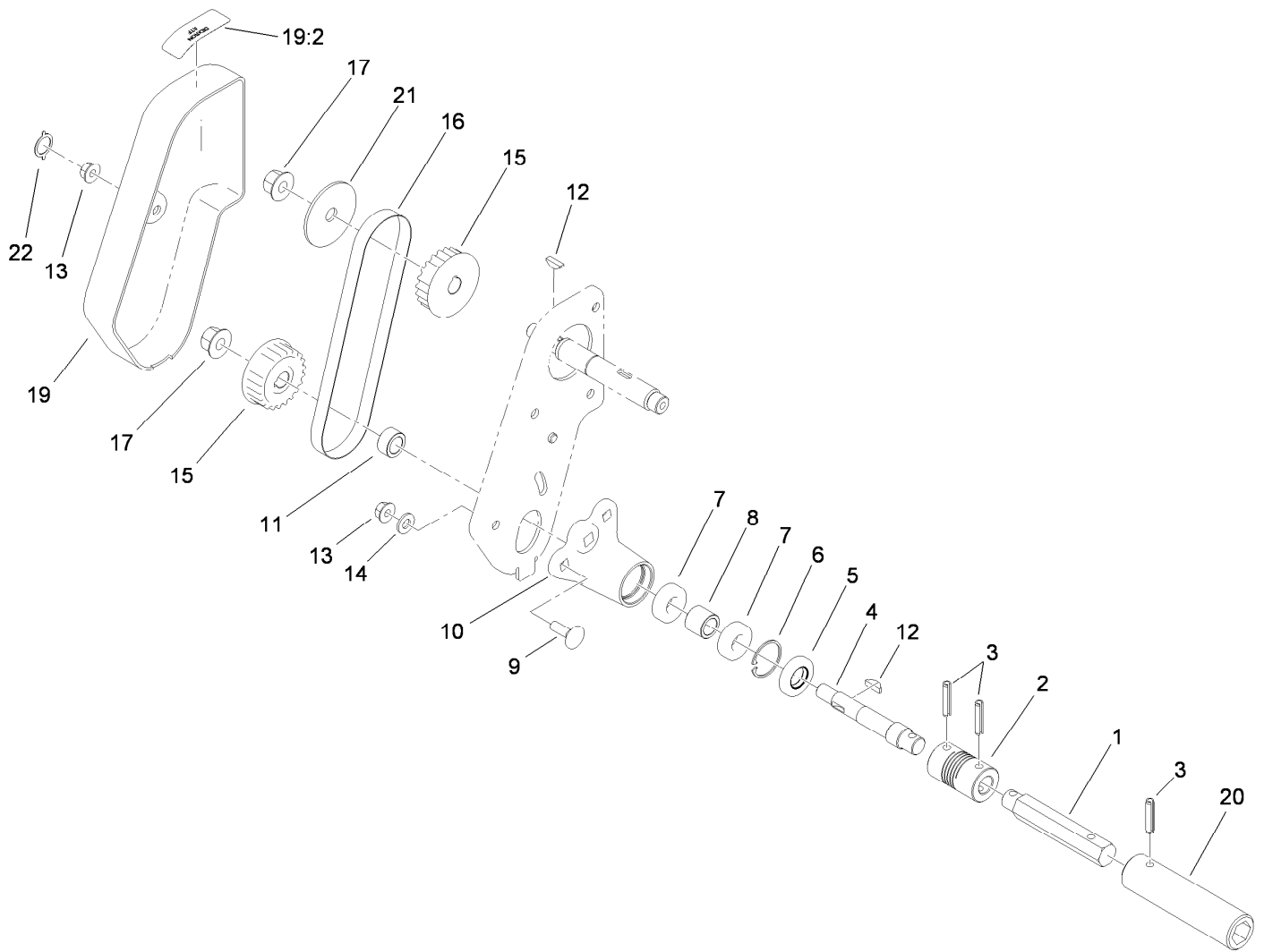
Contents

Frame Assembly.....	4
Reel Drive Assembly.....	5
Drum Drive and Basket Assembly.....	6
Gearbox and Engine Assembly.....	8
Gearbox Assembly.....	9
Differential Assembly No. 99-2038.....	11
Handle Assembly.....	12
Cylinder and Crankcase Assembly.....	14
Piston and Crankshaft Assembly.....	15
Valve and Camshaft Assembly.....	16
Lubrication Equipment Assembly.....	17
Cooling Equipment Assembly.....	18
Electric Equipment Assembly.....	19
Control Equipment Assembly.....	20
Carburetor Assembly.....	21
Air Filter and Muffler Assembly.....	22
Fuel Tank and Valve Assembly.....	23
Starter Assembly.....	24
Label Set.....	25
Attachments and Accessories.....	26



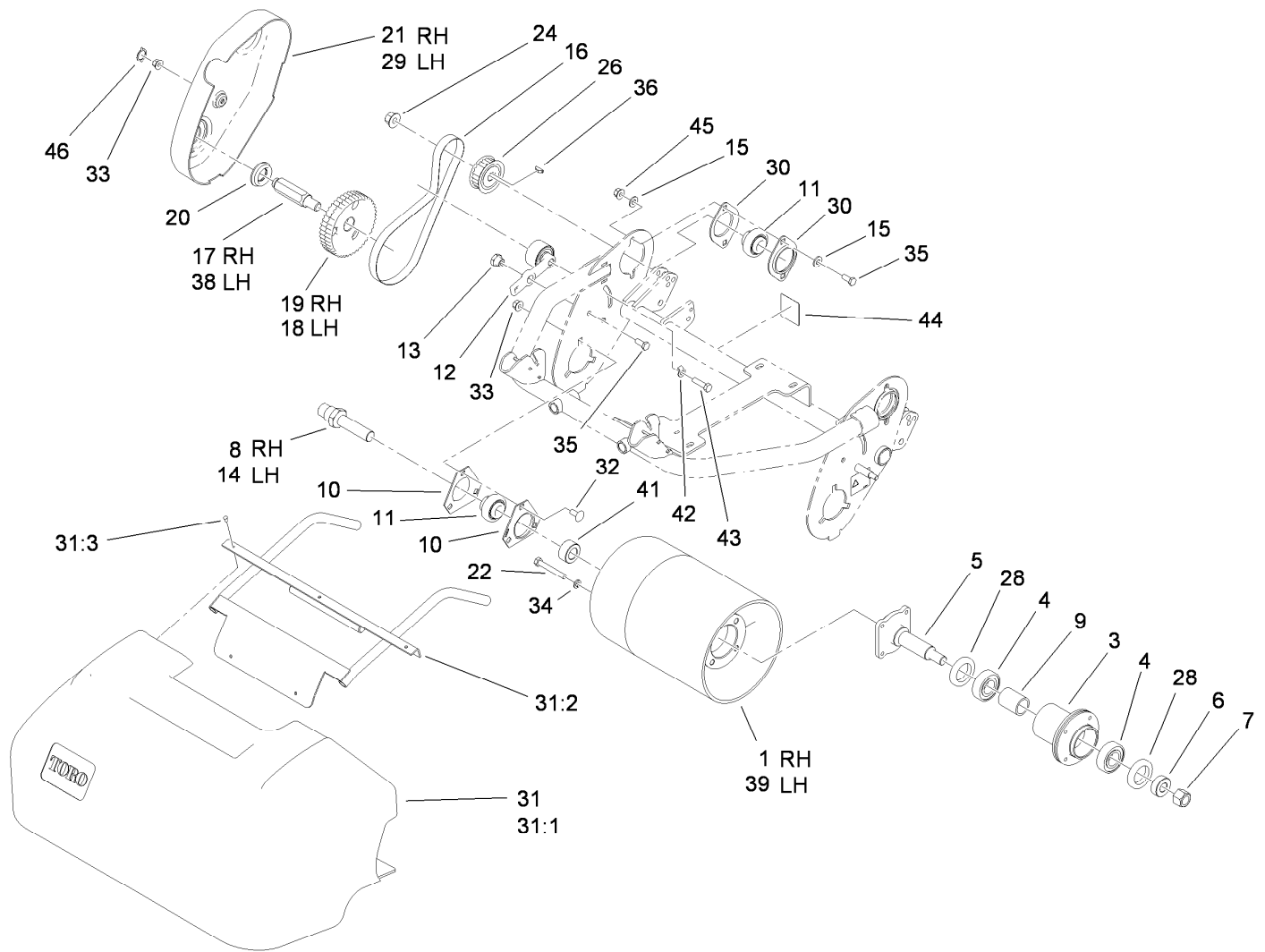
Frame Assembly

<i>Ref.</i>	<i>Part Number</i>	<i>Qty.</i>	<i>Description</i>	<i>Ref.</i>	<i>Part Number</i>	<i>Qty.</i>	<i>Description</i>
1	110-2401	1	Frame ASM	14	65-7510	2	Grommet-Handle
1:2	93-9356	2	Decal-Warning, Belt	15	99-3778-03	1	Kickstand
1:3	93-9389	2	Decal-Warning, Belt (Japan)	16	33115-070	2	Screw-HH
2	104-9798-01	1	Front Frame ASM	17	93-6024	3	Bushing-Support, Handle
3	93-2561	8	Bushing-Flange	18	65-7910	1	Spacer
4	99-2063	4	Link ASM	19	108-3177	2	Spacer-Hub
5	104-2611	6	Nut-HF	20	99-2058	2	Spacer-Support, Handle
6	99-2070-01	2	Base-Engine	21	33114-100	1	Screw-HH
7	33095-00	2	Washer-Flat	22	33114-045	1	Screw-HH
8	33094-00	8	Washer-Plain	23	33114-030	3	Screw-HH
9	117-1350	8	Nut-HF, Lock	24	104-0502	1	Spacer-Kickstand, Long
10	93-6029	2	Pin-Clevis, Ring	25	99-2011	1	Spring-Torsion
11	3290-467	2	Pin-Hair	27	33115-025	2	Screw-HH
12	105-9939	1	Strap-Support, Cable	28	33114-025	3	Screw-HH
13	99-3774-03	2	Arm-Handle				



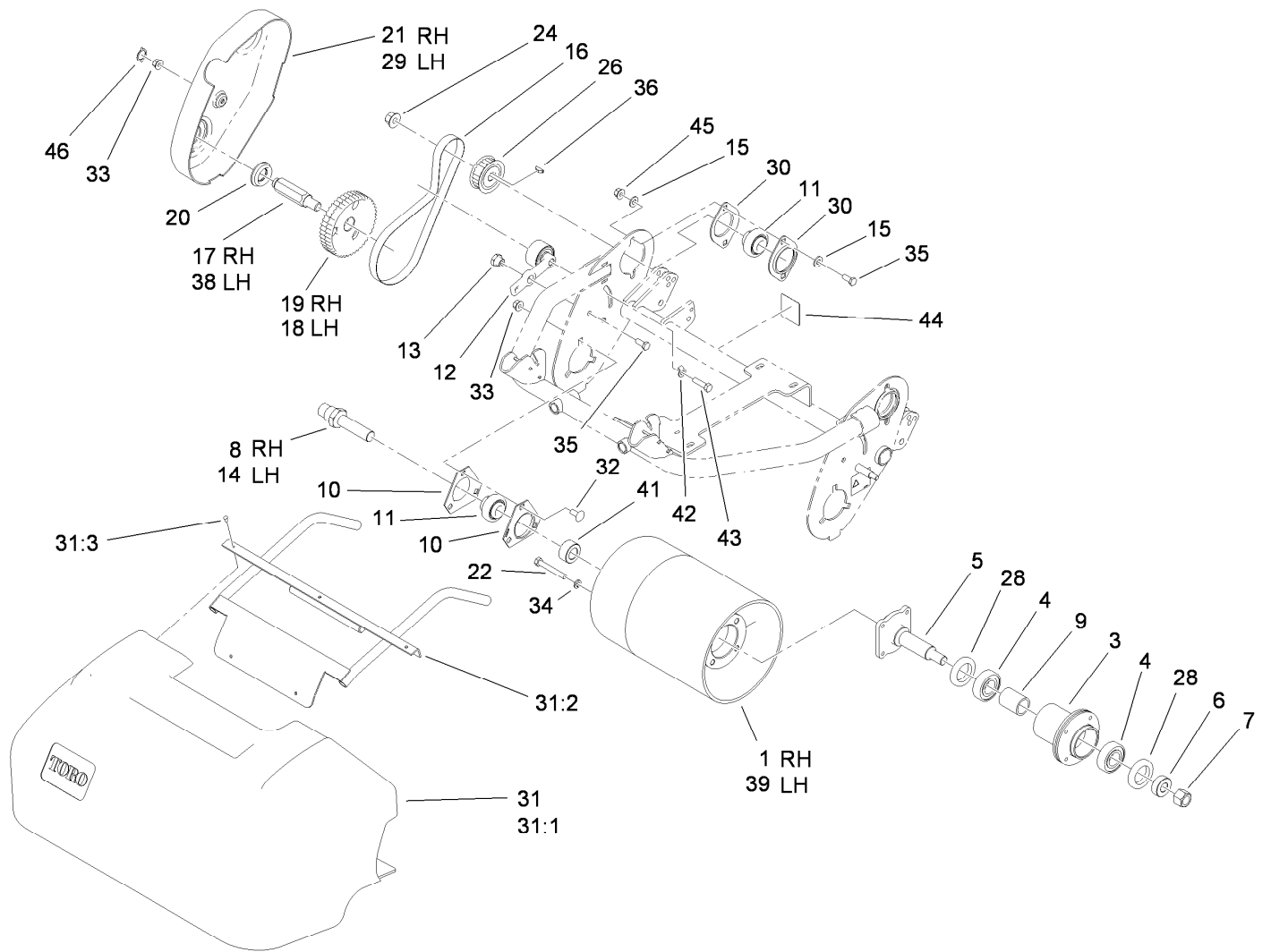
Reel Drive Assembly

<i>Ref.</i>	<i>Part Number</i>	<i>Qty.</i>	<i>Description</i>	<i>Ref.</i>	<i>Part Number</i>	<i>Qty.</i>	<i>Description</i>
1	110-2389	1	Shaft-Hex	12	3257-30	2	Key-Woodruff
2	99-3757	1	Coupling-Flex	13	117-1350	3	Nut-HF, Lock
3	32121-69	3	Pin-Spring	14	33094-00	2	Washer-Plain
4	110-2382	1	Shaft-Drive, Reel	15	107-9044	2	Pulley-22 Tooth
5	107-3205	1	Seal-Oil	16	99-2022	1	Belt
6	32151-51	1	Ring-Retaining	17	115-1115	2	Nut-HHF, Lock
7	251-336	2	Bearing-Ball	19	110-2286	1	Belt Cover ASM
8	99-2079	1	Spacer	19:2	105-2411	1	Decal-Oil, HYD
9	33124-025	2	Screw-CARR	20	110-2390	1	Tube-Hex
10	99-2083	1	Housing-Bearing	21	104-0532	1	Washer-Pulley
11	110-2381	1	Spacer	22	119-4140	1	Tab-Retainer



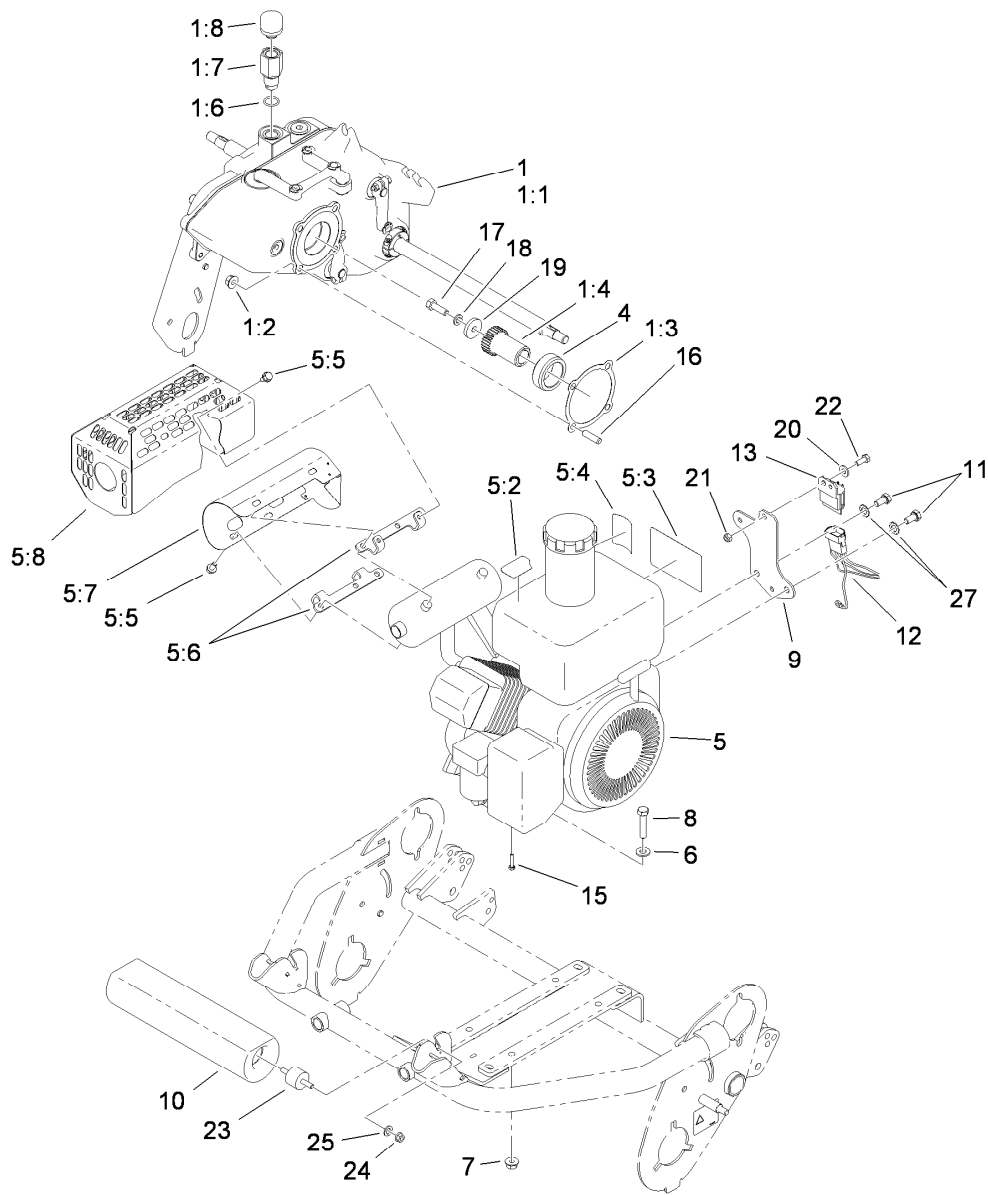
Drum Drive and Basket Assembly

Ref.	Part Number	Qty.	Description	Ref.	Part Number	Qty.	Description
1	107-3210	1	Drum-Traction, RH	22	33114-060	8	Screw-HH
3	107-3214	1	Hub-Drum	24	115-1115	2	Nut-HHF, Lock
4	251-82	2	Bearing-Ball	26	110-2315	2	Pulley-Driver, 22 Tooth
5	107-3215	1	Spindle-Drum	28	253-159	2	Seal
6	65-6530	1	Spacer	29	105-5327	1	Cover-Drum, LH
7	33028-00	1	Nut-Lock, NI	30	700083	4	Flangette-Bearing
8	107-3206	1	Shaft-Drum, RH	31	110-2380	1	Basket With Frame ASM
9	65-6520	1	Spacer	31:1	105-2439	1	Basket-Grass
10	108-8626	4	Flange-Triangular	31:2	112-9462-03	1	Basket Frame ASM
11	106-8448	4	Bearing-Race, Extended	31:3	3269-28	5	Rivet-Pop
12	117-1434	2	Idler ASM	32	33124-020	6	Screw-CARR
13	105-5770	2	Nut-Shoulder	33	117-1350	8	Nut-HF, Lock
14	107-3207	1	Shaft-Drum, LH	34	3253-4	8	Washer-Lock
15	33094-00	8	Washer-Plain	35	33114-020	6	Screw-HH
16	117-1353	2	Belt-Traction	36	3257-30	2	Key-Woodruff
17	107-3216	1	Shaft-Wheel, Transport (RH)	38	107-3224	1	Shaft-Wheel, Transport (LH)
18	110-2290	1	Pulley-Driven, Traction (LH)	39	107-3211	1	Drum-Traction, LH
19	110-2289	1	Pulley-Driven, Traction (RH)	41	106-8417	2	Spacer-Shaft, Drum
20	104-0533	2	Seal-Cover, Drum	42	107-8180	2	Washer-Tab
21	105-5326	1	Cover-Drum, RH	43	33114-030	2	Screw-HH
				44	117-1406	1	Decal-Europe Noise, 97Db



Drum Drive and Basket Assembly (continued)

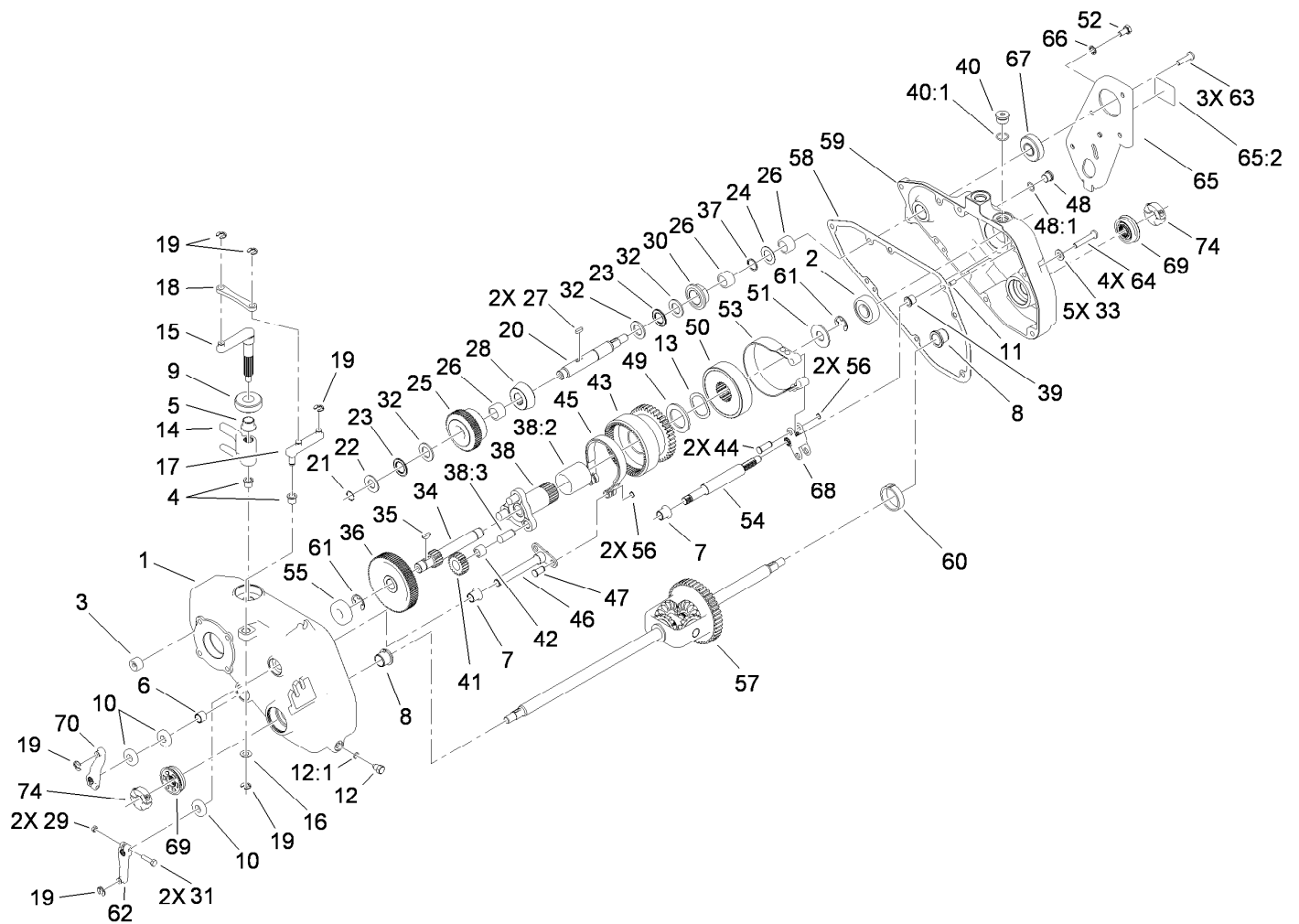
Ref.	Part Number	Qty.	Description
45	98-0668	4	Nut
46	119-4047	2	Tab-Retainer



Gearbox and Engine Assembly

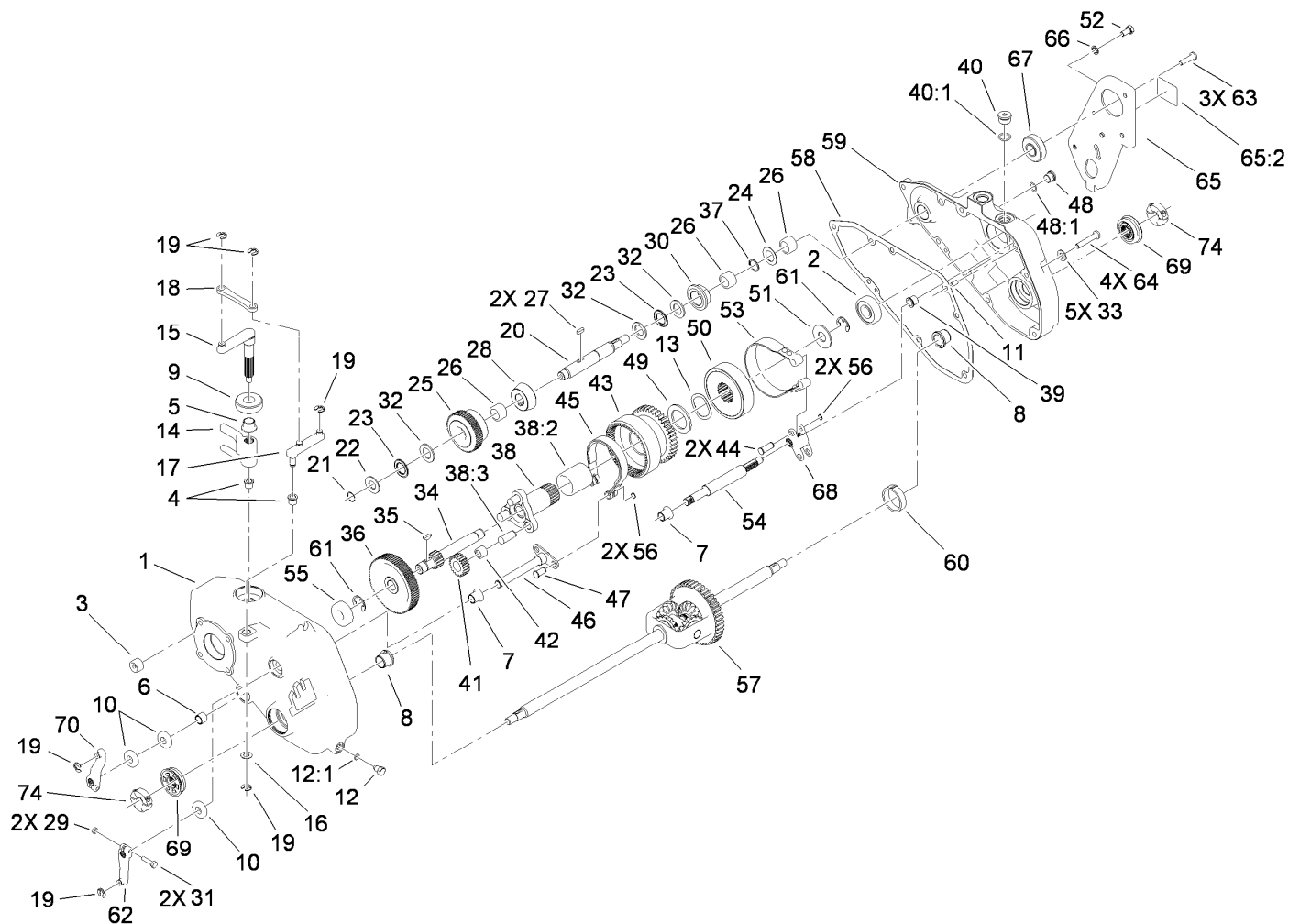
Ref.	Part Number	Qty.	Description	Ref.	Part Number	Qty.	Description
1	117-1457	1	Gearbox Service ASM	8	33114-040	4	Screw-HH
1:1		1	Gearbox ASM ●	9	117-1365-03	1	Plate-Harness, Wire
1:2	117-1350	4	Nut-HF, Lock	10	117-1459-01	1	Damper-13Lbs
1:3	99-2052	1	Gasket-Flange	11	33114-016	2	Screw-HH
1:4	110-2445	1	Gear-Engine, 28 Tooth	12	117-1410	1	Harness-Wire
1:6	237-79	1	O-Ring	13	1-323430	1	Module-Interlock
1:7	117-1453	1	Adapter-Vent	15	94-9015	1	Screw-HH
1:8	117-1446	1	Vent-Breather	16	108-9446	4	Screw-Set
4	99-2001	1	Adapter-Engine	17	3210-5	1	Screw-HH
5	115-1064	1	Engine ASM	18	3253-4	1	Washer-Lock
5:2	115-1615	1	Decal-Surface, Hot	19	65-8270	1	Washer
5:3	115-1613	1	Decal-Danger	20	3256-22	1	Washer-Flat
5:4	93-9886	1	Decal-Fuel	21	33023-00	1	Nut-Lock
5:5	104-2628	8	Screw-HWH	22	33113-016	1	Screw-HH
5:6	104-9771	2	Bracket-Guard, Muffler	23	110-2259	2	Mount-Isolator
5:7	110-7359	1	Muffler Shield ASM	24	33003-00	2	Nut-HF
5:8	110-7361-03	1	Guard-Muffler	25	107-7601	2	Washer-Tab
6	33094-00	4	Washer-Plain	27	3255-9	2	Washer-Lock
7	117-1350	8	Nut-HF, Lock				

● Not serviced separately



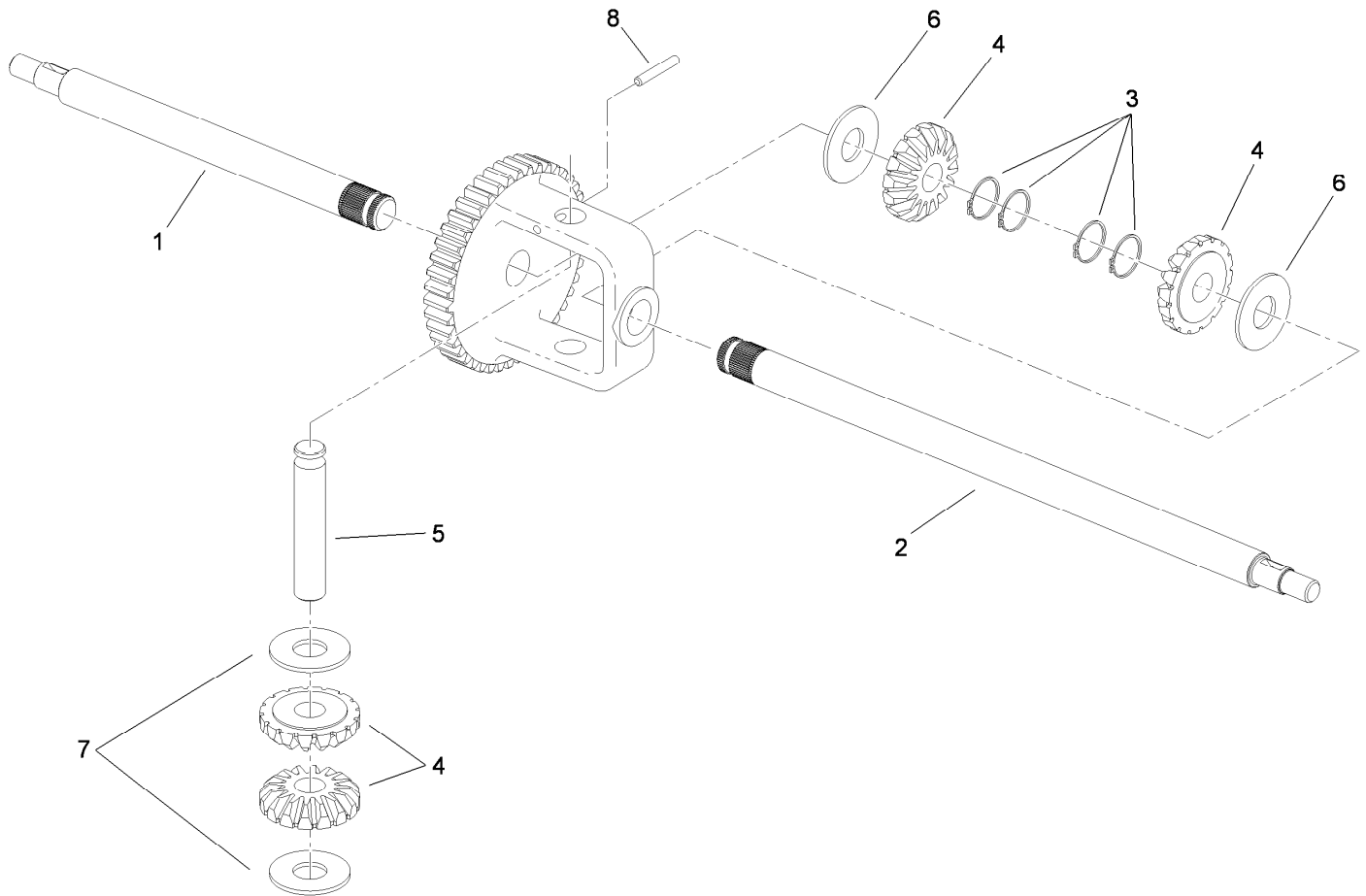
Gearbox Assembly

Ref.	Part Number	Qty.	Description	Ref.	Part Number	Qty.	Description
1	117-1450	1	Housing-Gearbox	20	115-1117	1	Shaft-Clutch, Reel
2	110-7339	1	Bearing-Ball	21	99-3805	1	Ring-Retaining
3	98-4194	1	Bearing-Needle, Caged	22	99-3806	1	Washer-Thrust
4	256-316	2	Bushing	23	99-3836	2	Bearing-Thrust
5	256-287	1	Bushing	24	99-3837	1	Washer-Thrust
6	256-1	1	Bushing	25	110-2444	1	Gear-Clutch, 55 Tooth (Reel Crowned)
7	256-219	2	Bushing	26	1523	3	Bearing-Needle
8	99-2062	2	Bushing-Keyed, Flanged	27	99-2059	2	Key
9	99-3842	1	Seal-Oil, Non-Vented Gearbox	28	107-3232	1	Cone ASM
10	99-2056	3	Seal-Oil	29	33023-00	2	Nut-Lock
11	95-0715	2	Pin-Dowel	30	110-2459	1	Hub-Plunger
12	110-2455	1	Fitting-Plug, Magnetic	31	33113-025	2	Screw-HH
12:1	237-118	1	O-Ring	32	99-3807	3	Washer-Thrust
13	105-9944	1	Washer-Wave, Spring	33	33094-00	5	Washer-Plain
14	99-2014	1	Fork-Clutch	34	107-8128	1	Shaft-Sun
15	99-2015	1	Shaft-Fork	35	3257-30	1	Key-Woodruff
16	37-8080	1	Washer-Thrust	36	110-2442	1	Gear-Traction, 78 Tooth (Crowned)
17	110-2450	1	Lever-Bellcrank	37	32120-72	1	Ring-Snap
18	99-3780	1	Link	38	110-2439	1	Carrier ASM
19	32151-47	6	Ring-Retaining				



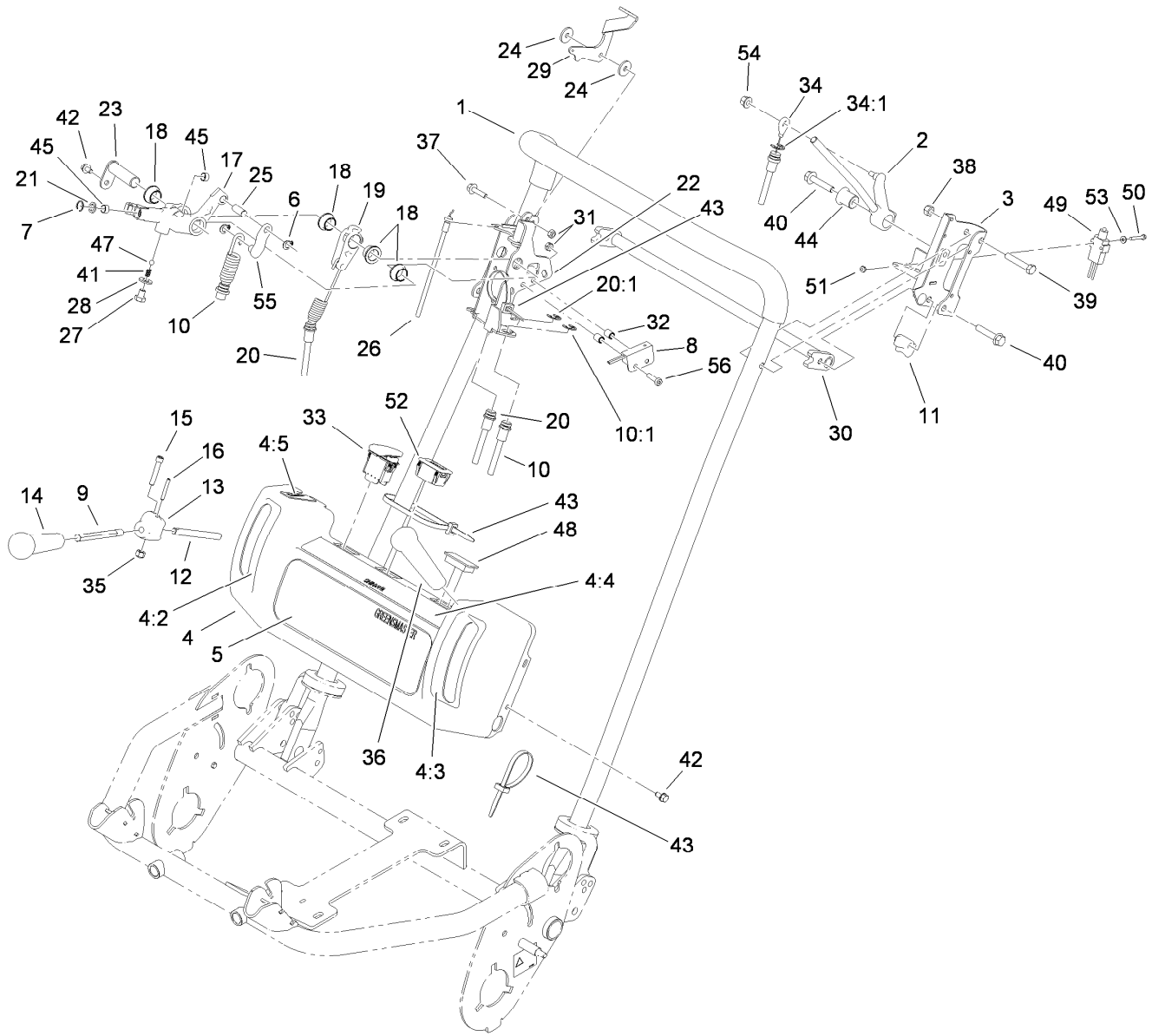
Gearbox Assembly (continued)

<i>Ref.</i>	<i>Part Number</i>	<i>Qty.</i>	<i>Description</i>	<i>Ref.</i>	<i>Part Number</i>	<i>Qty.</i>	<i>Description</i>
38:2	104-0524	1	Bushing-Carrier	55	251-6	1	Bearing-Ball
38:3	107-9031	3	Pin-Dowel	56	32120-46	4	Ring-Retaining
39	104-9776	1	Bushing-Flanged	57	99-2038	1	Differential ASM
40	353-988	1	Plug-Hex	58	117-1452	1	Gasket-Gearbox
40:1	237-79	1	O-Ring	59	117-1451	1	Cover-Gearbox
41	106-4694	3	Gear-Spur	60	99-2061	1	Bushing-Keyed
42	48-2060	3	Bearing-Roller	61	32151-48	2	E-Ring
43	110-2451	1	Gear-Ring, Planetary	62	99-3761	1	Lever-Gearbox
44	106-8444	2	Pin-Clevis, Long	63	99-6208	3	Screw-HSH
45	99-2049	1	Band-Brake	64	99-6207	4	Screw-HSBH
46	99-2020	1	Shaft-Brake	65	110-2293	1	Drive Plate ASM
47	106-8445	2	Pin-Clevis, Short	65:2	93-9389	1	Decal-Warning, Belt (Japan)
48	353-989	1	Plug-Hex, Hollow	65:2	93-9356	1	Decal-Warning, Belt
48:1	237-42	1	O-Ring	66	3254-2	1	Washer-Lock, Internal
49	99-2054	1	Washer-Thrust	67	105-2429	1	Seal-Oil
50	110-2452	1	Drum-Clutch, Traction	68	105-9938	1	Hub-Clutch, Traction
51	99-2055	1	Washer-Thrust	69	117-1443	2	Seal-Oil, Vented Gearbox
52	33114-016	1	Screw-HH	70	110-3451	1	Lever-Gearbox
53	107-9042	1	Clutch Band ASM	74	117-1388	2	Collar Assembly
54	105-9937	1	Shaft-Clutch, Traction				



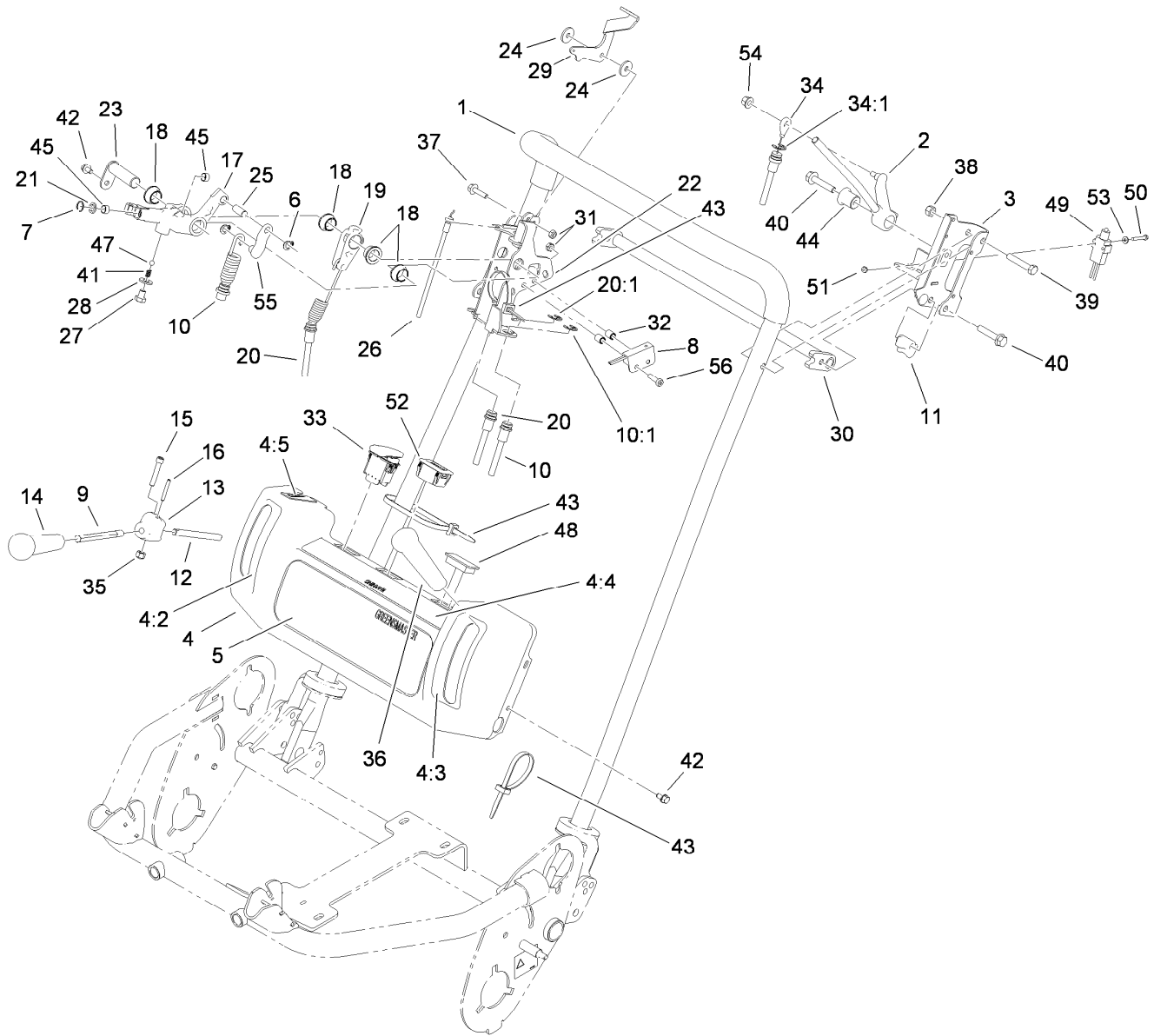
Differential Assembly No. 99-2038

<i>Ref.</i>	<i>Part Number</i>	<i>Qty.</i>	<i>Description</i>
1	105-2402	1	Axle (Short)
2	105-2403	1	Axle (Long)
3	95-5746	2	Ring-Retaining
4	105-2405	1	Gear Set-Differential
5	105-2404	1	Pin-Drive
6	95-5745	2	Washer
7	105-2406	2	Washer-Thrust
8	32121-79	1	Pin-Roll



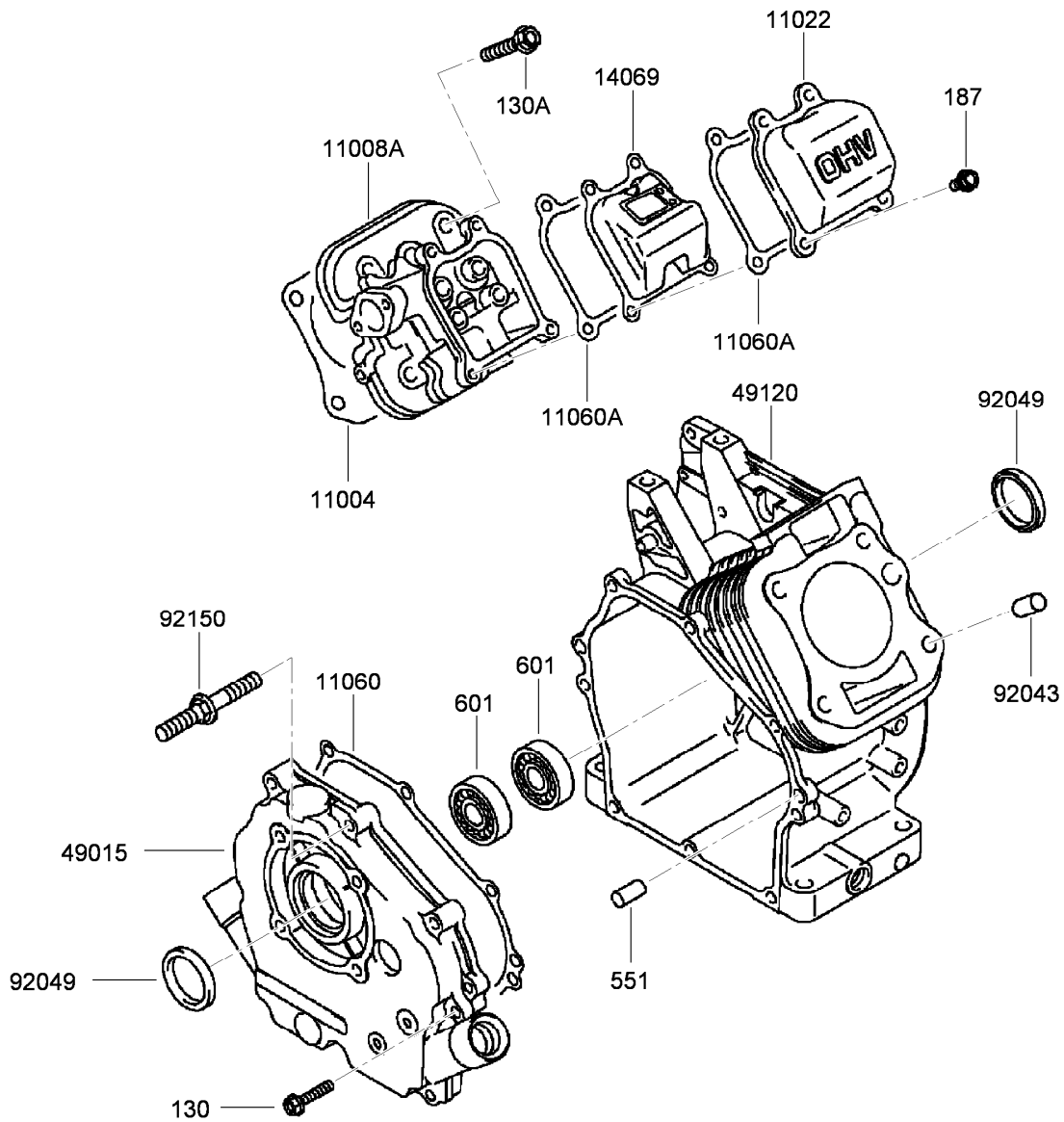
Handle Assembly

Ref.	Part Number	Qty.	Description	Ref.	Part Number	Qty.	Description
1	110-2414	1	Handle	17	104-9758	1	Lever-Control, Traction
2	117-1361	1	Lever-Brake, Console	18	80-1290	4	Bushing
3	117-1363-03	1	Brake Bracket ASM	19	99-3830	1	Lever-Reel
4	115-1123	1	Console ASM	20	99-3765	1	Cable-Clutch, Reel
4:2	104-2617	1	Decal-Lever, Traction	20:1	32120-47	1	Ring-Retaining, External
4:3	104-2618	1	Decal-Lever, Brake	21	105-2407	1	Wiper
4:4	115-1614	1	Decal-Warning	22	110-7334-03	1	Control Bracket ASM
4:5	93-6085	1	Decal-Throttle	23	99-3833	1	Pin-Lever, Reel
5	105-9916	1	Decal-Console, Main	24	66-2921	2	Washer-Friction
6	105-2410	2	Ring-Retaining	25	104-9782	1	Pin-Dowel
7	105-5324	1	Ring-Retaining	26	104-2620	1	Cable-Throttle
8	100-1270	1	Switch-Proximity	27	108-8646	1	Screw-HH, Lock
9	105-5319	1	Rod-Handle	28	33094-00	1	Washer-Plain
10	117-1435	1	Cable-Traction	29	108-3179	1	Lever-Throttle
10:1	32120-47	1	Ring-Retaining, External	30	112-9425	1	Handle-Crossmember
11	110-2415	2	Clamp-Handle	31	33023-00	3	Nut-Lock
12	99-3835	1	Pin	32	105-2401	2	Spacer-Cable, Brake
13	104-9761	1	Hub-Mount, Handle	33	112-9420	1	Switch-Engine
14	104-9760	1	Knob-Black	34	99-6214	1	Cable-Brake
15	105-5349	1	Screw-HSH, Special	34:1	32120-47	1	Ring-Retaining, External
16	32121-51	1	Pin-Roll	35	3296-42	1	Nut-Lock, NI



Handle Assembly (continued)

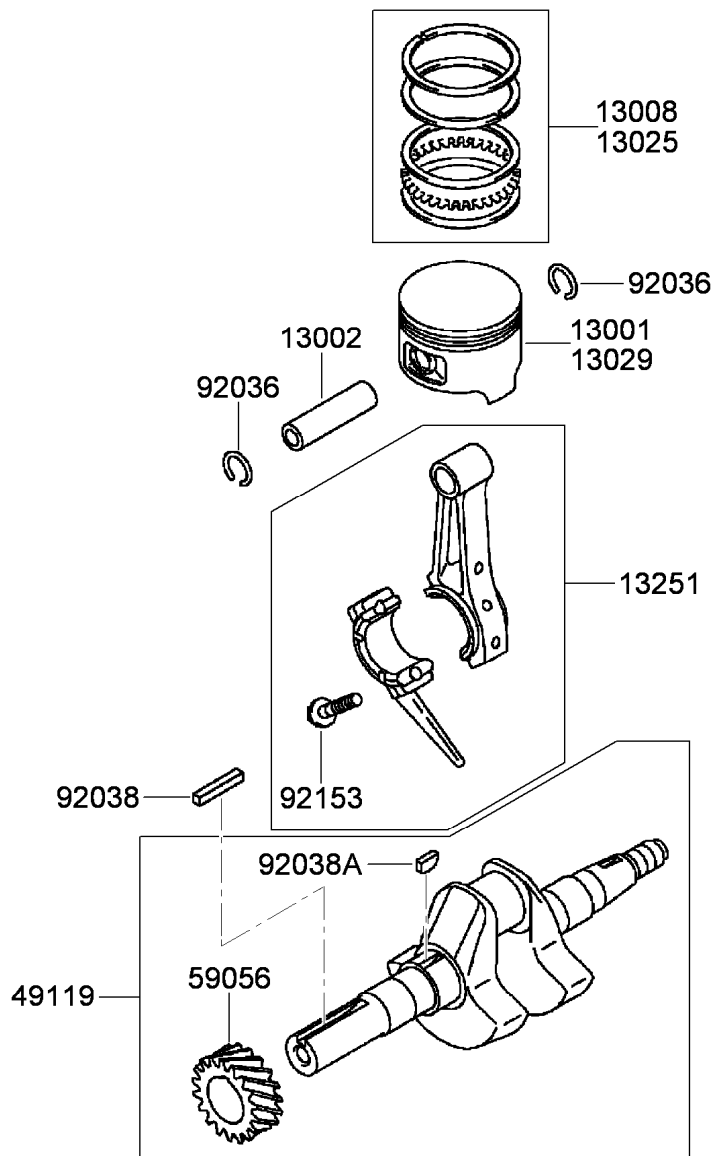
Ref.	Part Number	Qty.	Description	Ref.	Part Number	Qty.	Description
36	104-9774	1	Knob-Red	47	105-2442	1	Ball-Detent
37	33103-025	1	Screw-HHF	48	99-7420	1	Plug-Hole
38	33024-00	2	Nut-Lock	49	95-8900	1	Switch
39	33114-045	2	Screw-HH	50	32105-9	2	Screw
40	112-9419	3	Screw-HHF, W/Lock	51	3296-9	2	Nut-Lock
41	105-2443	1	Spring-Detent	52	119-1347	1	Meter-Hour
42	104-2628	5	Screw-HWH	53	3269-6	2	Washer-Flat
43	3290-378	5	Tie-Cable	54	81-0130	1	Nut-Flange, NI
44	112-9317	1	Bushing-Flanged	55	117-1428	1	Link-Traction
45	99-6247	2	Bushing-Bronze	56	112-9356	2	Screw-HSBH



Cylinder and Crankcase Assembly

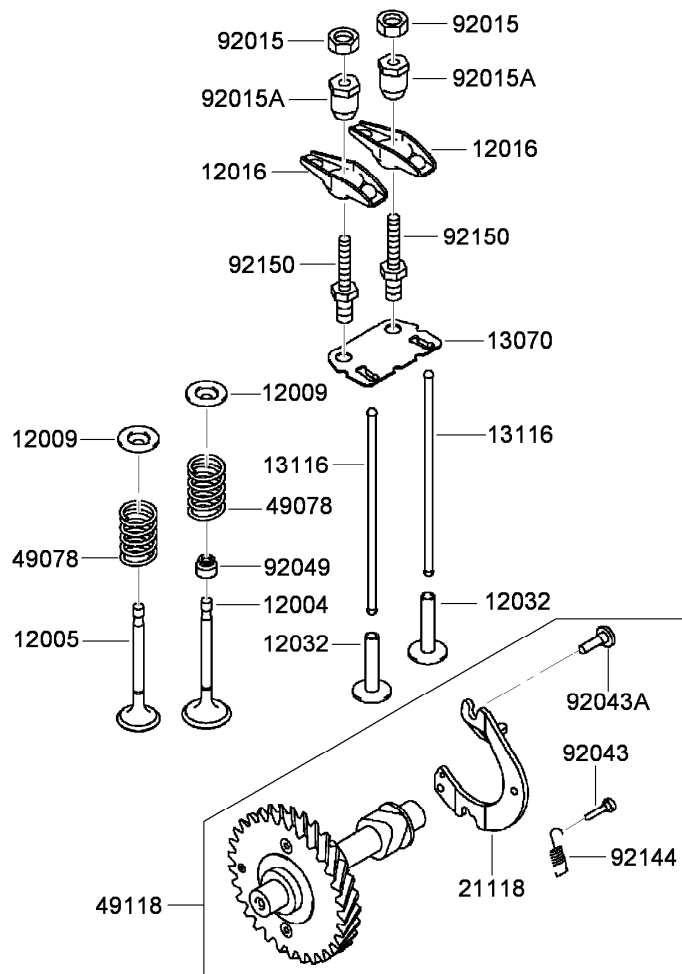
Ref.	Part Number	Qty.	Description
130	108-2522	7	Bolt-Flanged (6X30)
130A	115-1759	4	Bolt-Flanged (8X45)
187	115-1760	4	Bolt-Upset, Wsp (6X16)
551	93-8516	2	Pin-Dowel (6X12)
601	93-8517	2	Bearing-Ball
11004	93-8504	1	Gasket-Head
11008A	115-1757	1	Head-Cylinder
11022	93-8508	1	Case-Rocker

Ref.	Part Number	Qty.	Description
11060	93-8525	1	Gasket-Cover, Crankcase
11060A	93-8509	2	Gasket-Case, Rocker
14069	93-8510	1	Breather
49015	93-8697	1	Cover-Crankcase
49120	93-8515	1	Crankcase
92043	93-8512	2	Pin
92049	93-8511	2	Seal-Oil
92150	93-8524	1	Stud



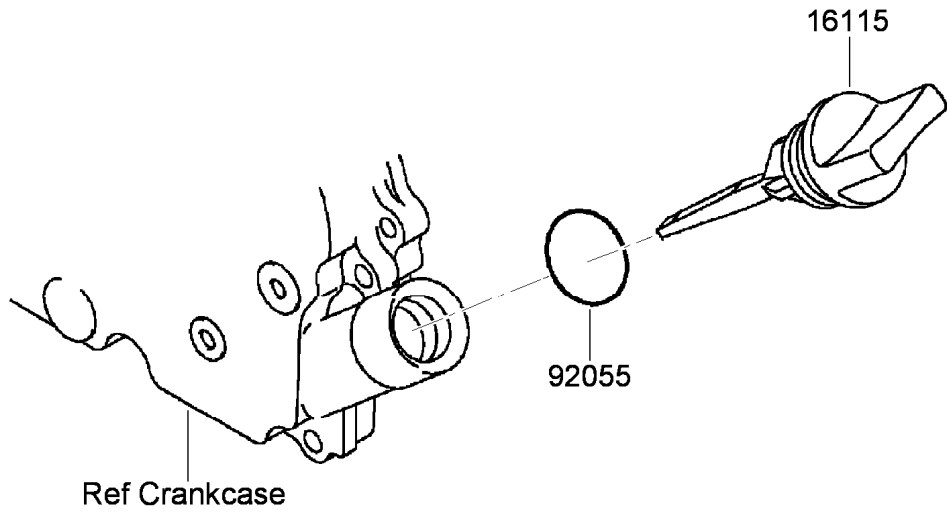
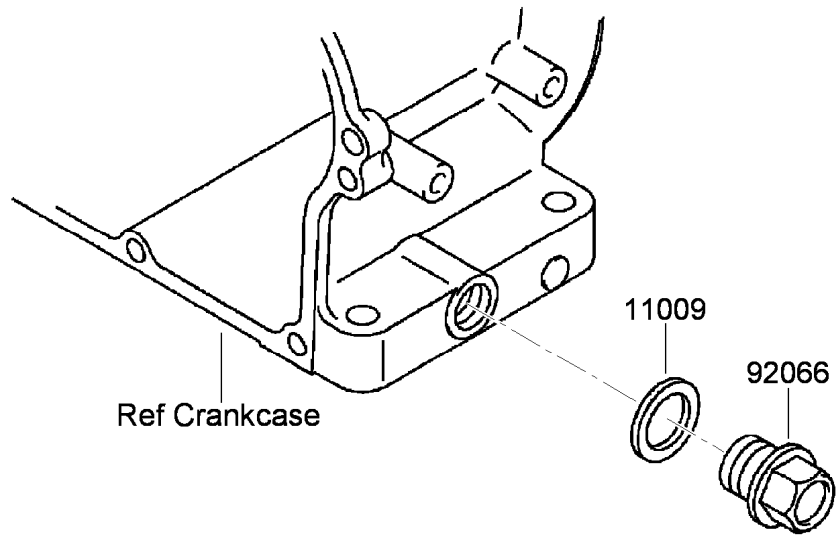
Piston and Crankshaft Assembly

<i>Ref.</i>	<i>Part Number</i>	<i>Qty.</i>	<i>Description</i>
13001	93-8502	1	Piston
13002	93-8501	1	Pin-Piston
13008	93-8503	1	Set-Ring, Piston
13025	94-6837	1	Piston Ring Set (.05Mm)
13029	94-6836	1	Piston (0.5 O S)
13251	93-8528	1	Connecting Rod ASM
49119	93-8696	1	Crankshaft ASM
59056	94-9043	1	Gear-Helical
92036	93-8500	2	Ring-Retaining
92038	93-8526	1	Key
92038A	93-8698	1	Key
92153	115-1805	2	Bolt (6X30)



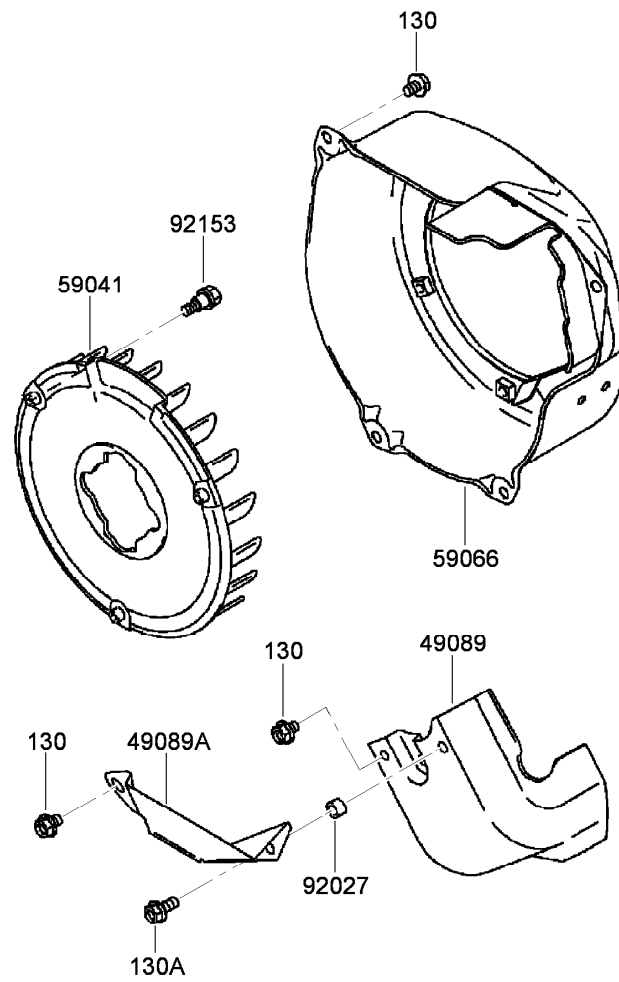
Valve and Camshaft Assembly

<i>Ref.</i>	<i>Part Number</i>	<i>Qty.</i>	<i>Description</i>
12004	93-8532	1	Valve-Intake
12005	93-8529	1	Valve-Exhaust
12009	93-8531	2	Retainer-Spring, Valve
12016	93-8535	2	Arm-Rocker
12032	93-8539	2	Tappet
13070	115-1758	1	Guide
13116	93-8538	2	Rod-Push
21118	93-8543	1	Decompressor
49078	115-1763	2	Spring-Valve, Engine
49118	93-8699	1	Camshaft ASM
92015	93-8533	2	Nut
92015A	93-8534	2	Nut
92043	93-8542	1	Pin
92043A	93-8540	2	Pin
92049	115-1762	1	Seal-Oil
92144	93-8541	1	Spring
92150	93-8536	2	Bolt



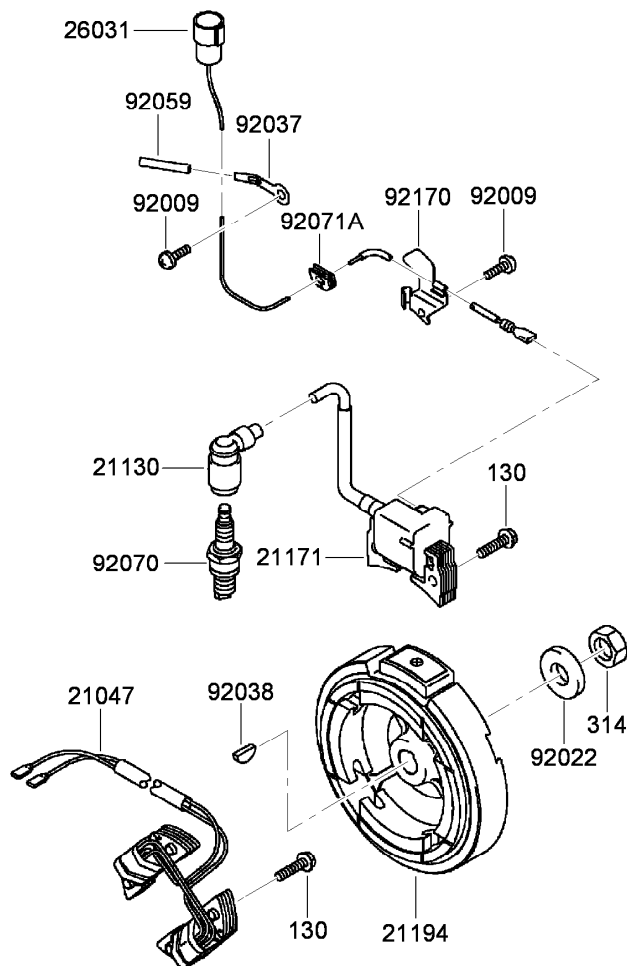
Lubrication Equipment Assembly

<i>Ref.</i>	<i>Part Number</i>	<i>Qty.</i>	<i>Description</i>
11009	93-8514	2	Gasket-Plug, Drain (14.2X19X2)
16115	93-8523	2	Cap-Filler, Oil
92055	94-9041	2	O-Ring (20Mm)
92066	115-1761	2	Plug (14X12)



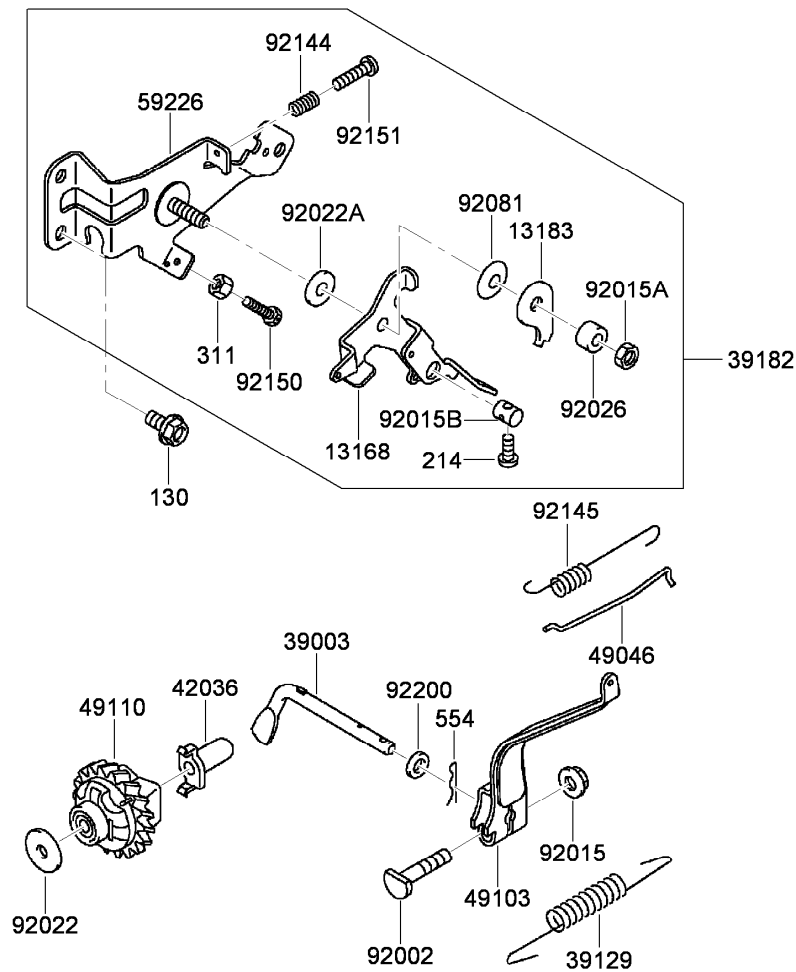
Cooling Equipment Assembly

<i>Ref.</i>	<i>Part Number</i>	<i>Qty.</i>	<i>Description</i>
130	115-1765	7	Bolt-Flanged (6X8)
130A	115-1764	1	Bolt-Flanged (6X14)
49089	93-8563	1	Shroud-Engine
49089A	93-8565	1	Shroud-Engine
59041	93-8572	1	Fan
59066	115-1804	1	Housing-Fan
92027	93-8564	1	Collar (6.8X10X6)
92153	115-1766	3	Bolt



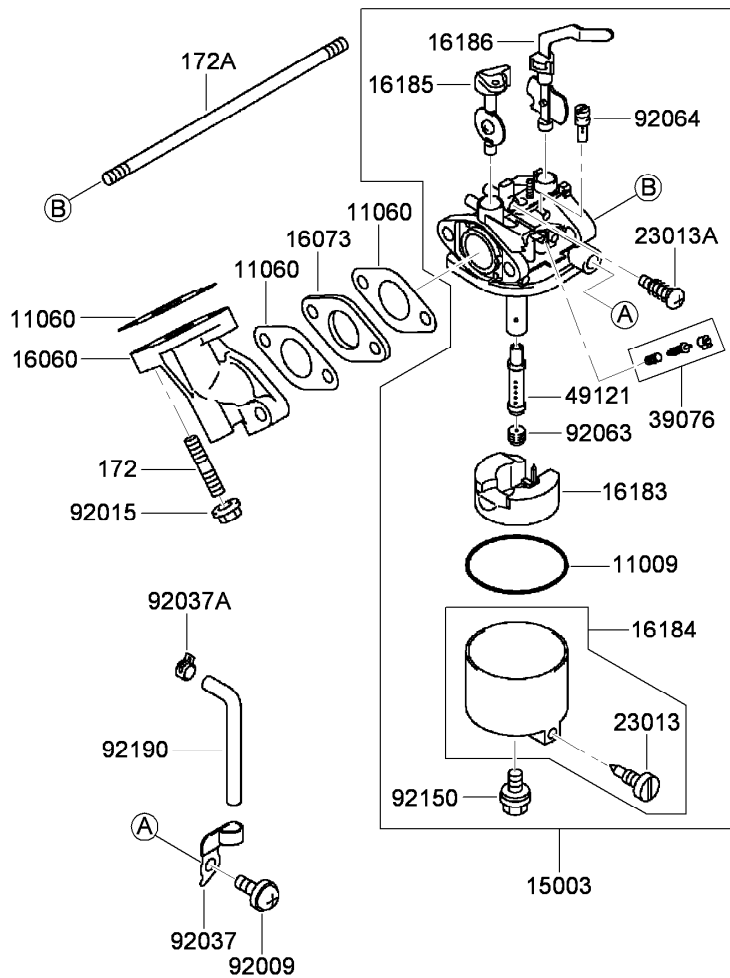
Electric Equipment Assembly

<i>Ref.</i>	<i>Part Number</i>	<i>Qty.</i>	<i>Description</i>
130	100-2610	6	Bolt-Flanged (6X25)
314	93-8568	1	Nut-Hex, Fine (14Mm)
21047	99-4267	1	Coil-Lighting
21130	KW10087	1	Cap-Sparkplug
21171	94-9031	1	Ignition Coil ASM
21194	99-6237	1	Flywheel ASM
26031	115-1767	1	Harness
92009	95-9716	2	Screw
92022	93-8569	1	Washer
92037	115-1771	1	Clamp
92038	93-8571	1	Key
92059	115-1768	1	Tube (5X6X75)
92070	108-2557	1	Sparkplug (Bpr5Es) (Ngk) Solid
92071A	115-1772	1	Grommet
92170	93-8583	1	Clamp



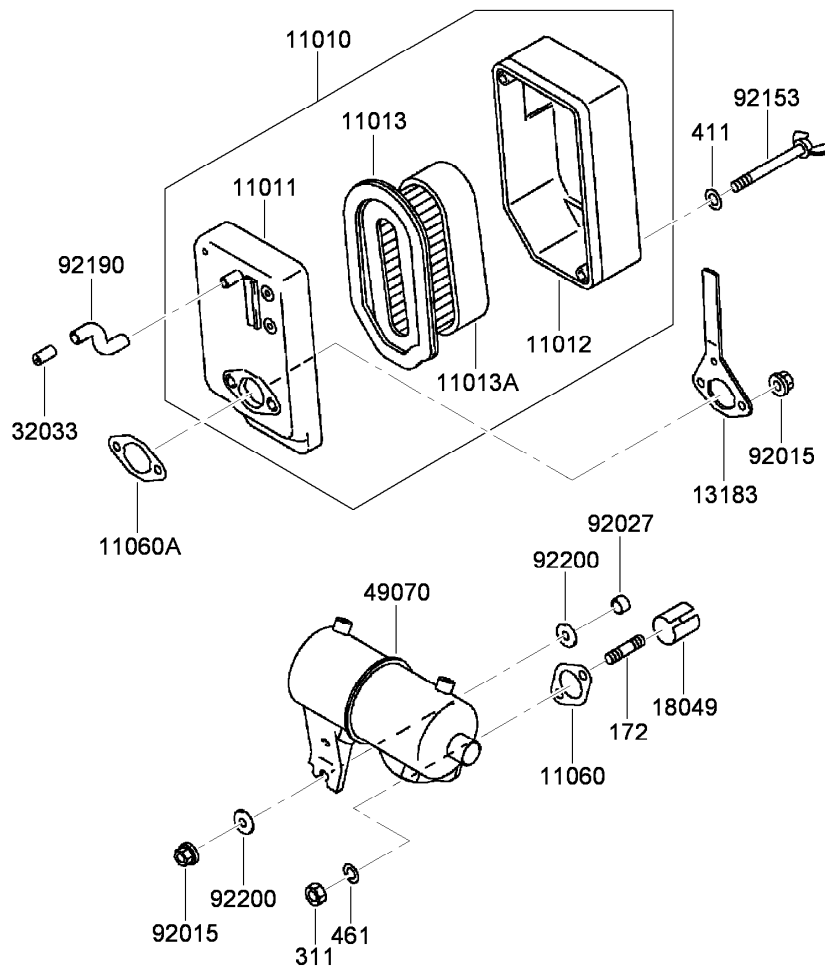
Control Equipment Assembly

<i>Ref.</i>	<i>Part Number</i>	<i>Qty.</i>	<i>Description</i>	<i>Ref.</i>	<i>Part Number</i>	<i>Qty.</i>	<i>Description</i>
130	115-1809	2	Bolt-Flanged (6X12)	92002	93-8606	1	Bolt (6X28)
214	115-1778	1	Screw-Pan (4X14)	92015	93-8631	1	Nut
311	100-2668	1	Nut-Hex (4Mm)	92015A	93-8595	1	Nut
554	93-8607	1	Pin-Snap (1.2X21.2)	92015B	93-8597	1	Nut
13168	93-8598	1	Lever	92022	94-6842	1	Washer (6.2X20X0.5)
13183	93-8592	1	Plate	92022A	93-8590	1	Washer
39003	93-8609	1	Arm-Pivot	92026	115-1776	1	Spacer
39129	94-9030	1	Spring-Governor	92081	115-1775	1	Spring
39182	115-1754	1	Control Panel ASM	92144	93-8588	1	Spring
42036	108-2567	1	Sleeve	92145	115-1810	1	Spring
49046	115-1811	1	Rod-Governor	92150	115-1813	1	Bolt
49103	93-8603	1	Arm-Governor	92151	115-1774	1	Bolt (4X22)
49110	115-1812	1	Governor ASM	92200	93-8608	1	Washer (6.5X11.5X2.0)
59226	115-1773	1	Panel-Control				



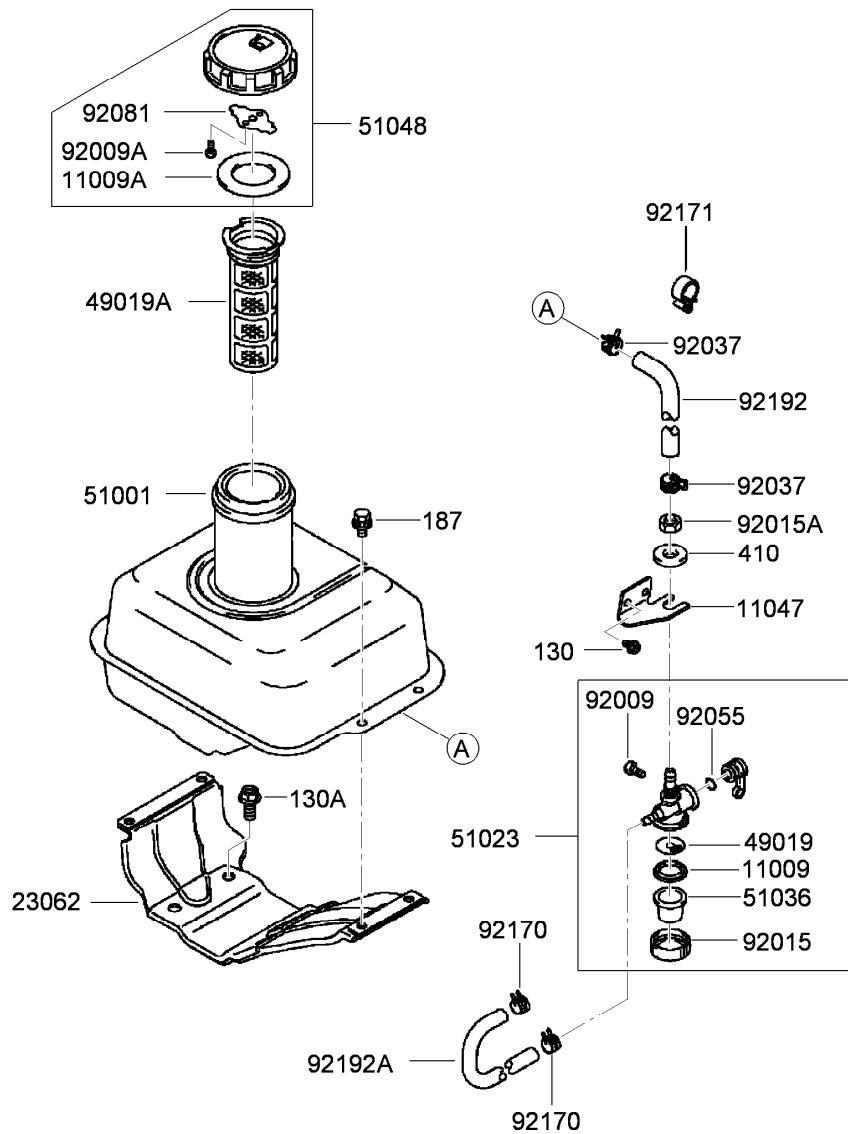
Carburetor Assembly

Ref.	Part Number	Qty.	Description
172	93-8632	2	Bolt-Stud (6X18)
172A	115-1814	1	Bolt-Stud (6X73)
11009	93-8624	1	Gasket
11060	93-8613	3	Gasket
15003	94-9032	1	Carburetor ASM
16060	93-8633	1	Pipe-Intake
16073	94-9048	1	Insulator
16183	94-6844	1	Float ASM
16184	93-8625	1	Float Chamber ASM
16185	94-9033	1	Throttle Valve ASM
16186	93-8617	1	Choke Valve ASM
23013	93-8626	1	Screw ASM
23013A	93-8619	1	Screw ASM
39076	94-9034	1	Limitor
49121	94-9035	1	Nozzle-Main
92009	94-6845	1	Screw
92015	93-8631	2	Nut
92037	94-6846	1	Clamp
92037A	93-8629	1	Clamp
92063	94-9036	1	Jet-Main (No.65)
92064	94-9037	1	Jet-Pilot (No.40)
92150	93-8627	1	Bolt
92190	93-8630	1	Tube



Air Filter and Muffler Assembly

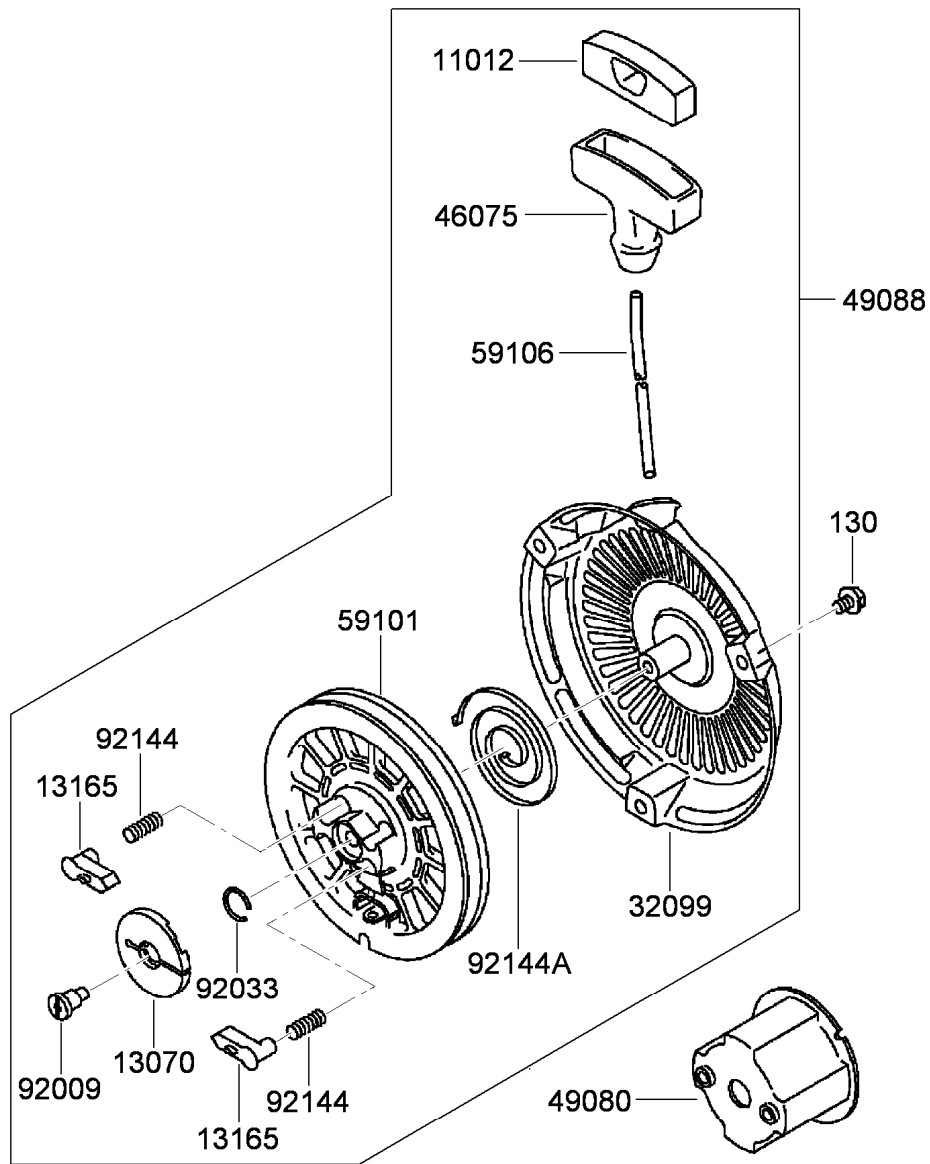
<i>Ref.</i>	<i>Part Number</i>	<i>Qty.</i>	<i>Description</i>
172	115-1819	2	Bolt-Stud (6X16)
311	93-8656	2	Nut-Hex (6Mm)
411	115-1816	2	Washer-Plain (5Mm)
461	93-8655	2	Washer-Spring (6Mm)
11010	93-8634	1	Air Filter ASM
11011	93-8635	1	Case Filter ASM
11012	93-8638	1	Cap-Filter, Air
11013	93-8636	1	Element-Filter, Air
11013A	93-8637	1	Element-Filter, Air
11060	93-8654	1	Gasket-Muffler
11060A	93-8657	1	Gasket-Filter, Air
13183	93-8642	1	Plate-Filter, Air
18049	93-8652	1	Pipe-Exhaust
32033	93-8658	1	Pipe
49070	115-1817	1	Muffler
92015	93-8631	3	Nut
92027	93-8651	1	Collar
92153	93-8640	2	Bolt
92190	93-8659	1	Tube
92200	93-8650	2	Washer (.5X18X2.0)



Fuel Tank and Valve Assembly

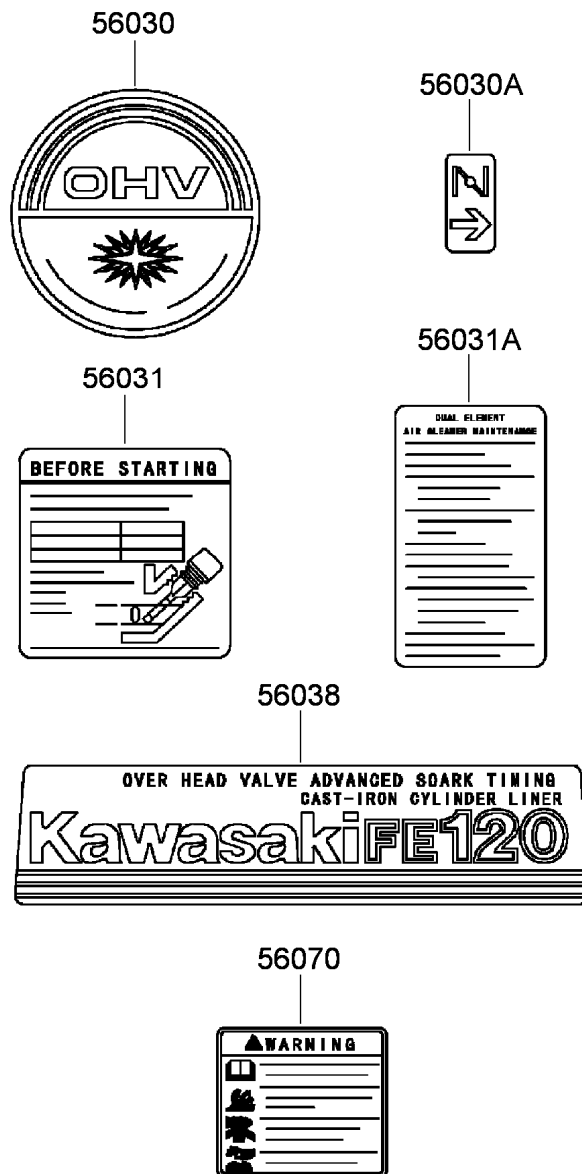
Ref.	Part Number	Qty.	Description
130	115-1864	2	Bolt-Flanged (5X8)
130A	115-1867	4	Bolt-Flanged (8X18)
187	115-1760	4	Bolt-Upset, Wsp (6X16)
410	93-8668	1	Washer-Plain (10Mm)
11009	93-8673	1	Gasket
11009A	93-8662	1	Gasket
11047	93-8681	1	Bracket
23062	104-2383	1	Bracket-Tank
49019	94-6849	1	Filter-Tapper, Fuel
49019A	94-6826	1	Filter-Fuel
51001	119-4132	1	Fuel Tank ASM
51023	93-8669	1	Fuel Tapper ASM
51036	93-8674	1	Cup-Tapper, Fuel

Ref.	Part Number	Qty.	Description
51048	93-8660	1	Fuel Cap ASM
92009	93-8670	1	Screw
92009A	93-8661	2	Screw
92015	93-8675	1	Nut
92015A	94-9042	1	Nut
92037	115-1861	2	Clamp-Clip, Hose
92055	93-8671	1	O-Ring
92081	93-8663	1	Spring
92170	115-1865	2	Clamp
92171	115-1862	1	Clamp
92192	115-1863	1	Tube (6.2X13.2X200)
92192A	115-1866	1	Tube (4X11X160)



Starter Assembly

Ref.	Part Number	Qty.	Description
130	115-1765	3	Bolt-Flanged (6X8)
11012	94-9044	1	Cap-Grip
13070	93-8562	1	Guide-Pawl
13165	93-8554	2	Pawl-Starter, Recoil
32099	94-9046	1	Case-Starter, Recoil
46075	94-9045	1	Grip-Starter, Recoil
49080	93-8567	1	Pulley-Recoil
49088	93-8552	1	Recoil Starter ASM
59101	93-8556	1	Reel-Starter, Recoil
59106	93-8560	1	Rope (4X1500)
92009	93-8553	1	Screw
92033	93-8561	1	Ring-Retaining
92144	93-8555	2	Spring-Return
92144A	93-8557	1	Spring



Label Set

Ref.	Part Number	Qty.	Description
56030	94-9027	1	Label-Recoil
56030A	93-8687	1	Decal-Choke
56031	93-8689	1	Decal-Instructions
56031A	93-8690	1	Decal-Maintenance
56038	94-9028	1	Label-Kawasaki
56070	93-8692	1	Decal-Warning

Attachments and Accessories

For 04024 Greensmaster Flex 21 Traction Unit

Product Name	Model/Part
Light Kit.....	04061
Out Front Brush Kit.....	04119
Wheel Kit.....	04123
11-Blade Cutting Unit.....	04202
14-Blade Cutting Unit.....	04208
Operator Presence Kit.....	112-9282
Spark Arrestor Kit.....	117-1441
MVP Filter and Spark Plug Kit.....	30065
Jet-Main, No. 62 (High Altitude).....	98-8735
Jet-Main, No. 60 (High Altitude).....	98-8736

Notes:



Count on it.