



Operator-Controlled Discharge Chute Kit with Bag

GrandStand® Mower with 36-inch or 40-inch Cutting Unit

Model No. 117-8565

Installation Instructions

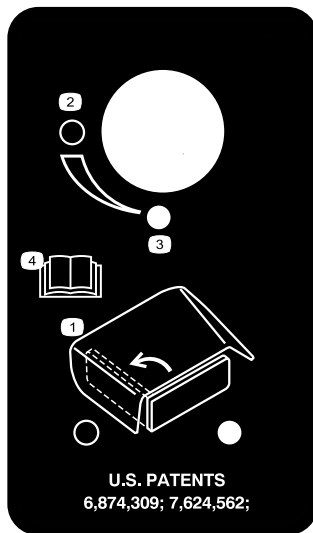
Note: Determine the left and right sides of the machine from the normal operating position.

Safety

Safety and Instructional Decals



Safety decals and instructions are easily visible to the operator and are located near any area of potential danger. Replace any decal that is damaged or lost.



117-8569

- | | |
|-------------------------------|--|
| 1. Operator discharge control | 3. Closed |
| 2. Open | 4. Read the <i>Operator's Manual</i> . |

Installation

Loose Parts

Use the chart below to verify that all parts have been shipped.

Procedure	Description	Qty.	Use
1	No parts required	–	Remove the existing side discharge chute.
2	Side discharge chute Bolt, (5/16 x 7–1/2 inches) Locknut, (5/16 inch) Plastic spacer Spring	1 1 1 1 1	Install the side discharge chute with gate.
3	No parts required	–	Drill the holes.
4	Handle assembly Bolt, (3/8 x 1 inch) (Self tapping) Plastic cable tie Plastic mount with adhesive Locknut	1 2 2 2 1	Install the handle and cables.
5	Trash bag	1	Install the trash bag.

1

Removing the Existing Side Discharge Chute

No Parts Required

Procedure

1. Disengage the PTO, set the parking brake, and chock or block the drive wheels.
2. Turn off the engine, remove the key, and wait for all moving parts to stop before leaving the operating position.
3. Remove the locknut, bolt, spring and spacer holding the deflector to the pivot brackets (Figure 1). Remove the grass deflector.

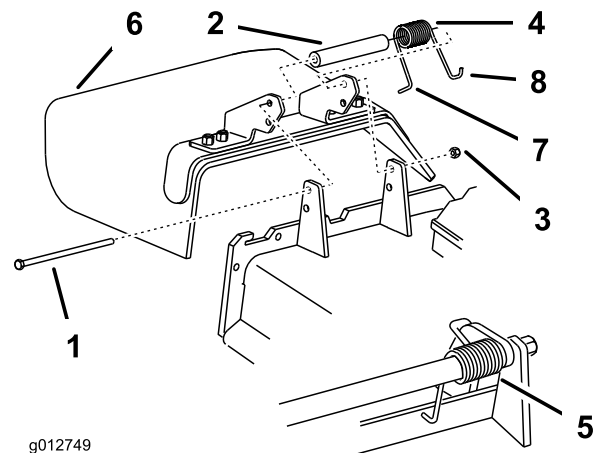


Figure 1

- | | |
|------------|---|
| 1. Bolt | 5. Spring installed |
| 2. Spacer | 6. Grass Deflector |
| 3. Locknut | 7. L end of spring, place behind deck edge before installing bolt |
| 4. Spring | 8. J hook end of spring |

2

Installing the Side Discharge Chute with Gate

Parts needed for this procedure:

1	Side discharge chute
1	Bolt, (5/16 x 7-1/2 inches)
1	Locknut, (5/16 inch)
1	Plastic spacer
1	Spring

Procedure

⚠ WARNING

An uncovered discharge opening could allow the lawn mower to throw objects in the operator's or bystander's direction and result in serious injury. Also, contact with the blade could occur.

- Never operate the lawn mower unless you install a cover plate, a mulch plate, or a grass chute and catcher.
- Make sure the grass deflector is in the down position.

Note: Ensure the grass deflector is installed in the lower holes in the mower deck brackets.

1. Place the new spacer and spring onto grass deflector. Place one end of spring behind deck edge.

Note: Make sure the end of the spring is installed behind the deck edge before installing the bolt as shown in Figure 2.

2. Install bolt and nut in the lower hole. Place the end of the spring around the grass deflector (Figure 2).
3. Tighten the nut until the end of the bolt is flush with the end of the nut. Do not over tighten.

Important: The grass deflector must be able to lower down into position. Lift the deflector up to test that it lowers into the full down position.

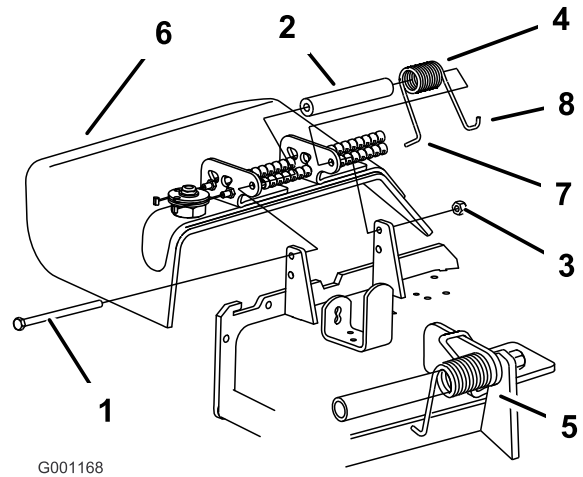


Figure 2

1. Bolt
2. Spacer
3. Locknut
4. Spring
5. Spring installed
6. Grass Deflector

3

Drilling the Holes

No Parts Required

Procedure

1. Before drilling the holes, check if the holes already exist (Figure 5). Proceed to procedure 4 if the holes exist.

⚠ DANGER

In certain conditions, gasoline is extremely flammable and highly explosive. A fire or explosion from gasoline can burn you and others and can damage property.

- Place a piece of metal between the fuel tank and the left side of the machine before drilling the holes.
 - Never drill into the side of the fuel tank.
 - A fuel tank leak may result in a fire or explosion from gasoline.
2. Place a piece of metal between the fuel tank and the left side of the machine. This will prevent the drill bit from drilling into the fuel tank (Figure 3).

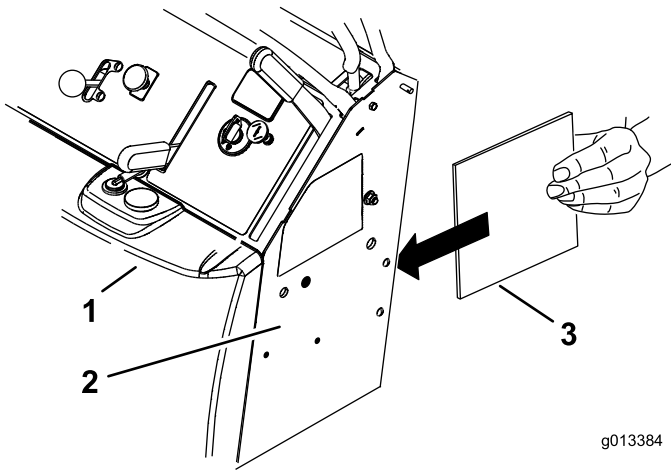


Figure 3

- 1. Fuel tank
- 2. Left side of machine
- 3. Steel plate

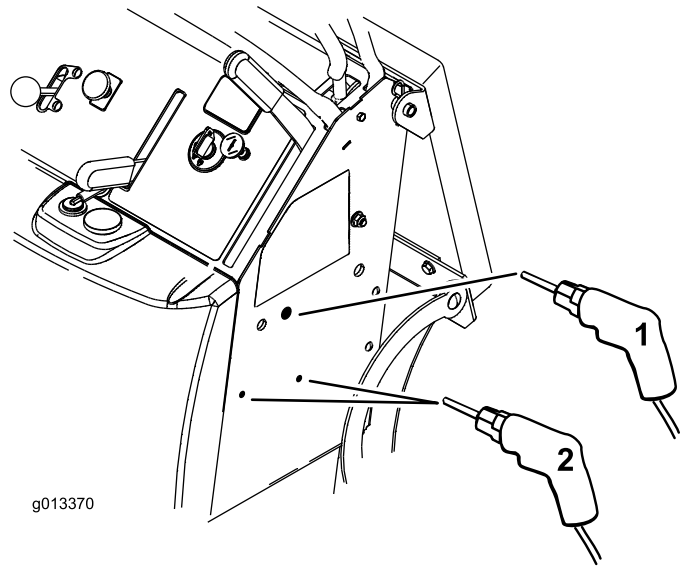


Figure 5

- 1. Drill one 11/32 inch diameter hole
- 2. Drill two 11/64 inch diameter holes

- 3. Locate the paper template at the back of this instruction sheet and cut it out.
- 4. Locate the two existing holes and place the template on the left side of the machine (Figure 4).
- 5. Mark the location for the holes. The small holes do not need to be drilled if the manual tube is mounted horizontal to the ground (Figure 4).

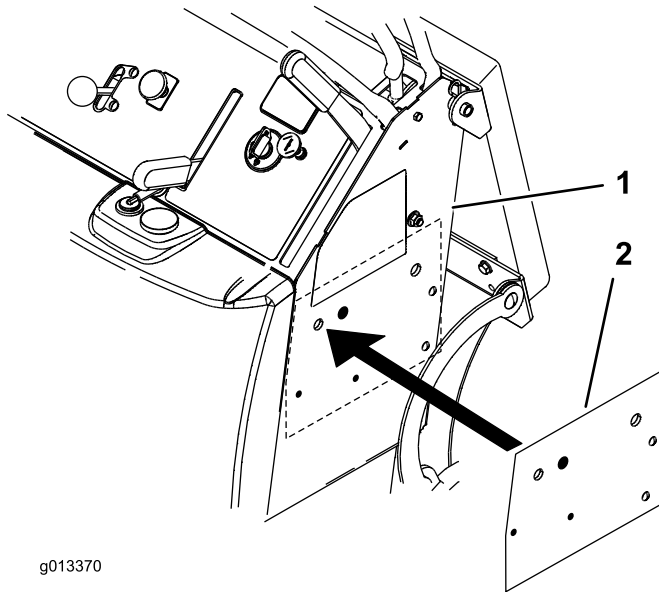


Figure 4

- 6. Drill one 11/32 inch diameter hole into the side of the machine for the handle (Figure 5).
- 7. Drill two 11/64 inch diameter holes into the side of the machine for the manual tube (Figure 5).

4

Installing the Handle and Cables

Parts needed for this procedure:

1	Handle assembly
2	Bolt, (3/8 x 1 inch) (Self tapping)
2	Plastic cable tie
2	Plastic mount with adhesive
1	Locknut

Procedure

Note: Determine the left and right sides of the machine from the normal operating position.

- 1. Install the handle assembly to the left side of the machine with 2 bolts (3/8 x 1 inch) (Figure 6). The bolts are thread forming bolts. The holes do not require tapping.

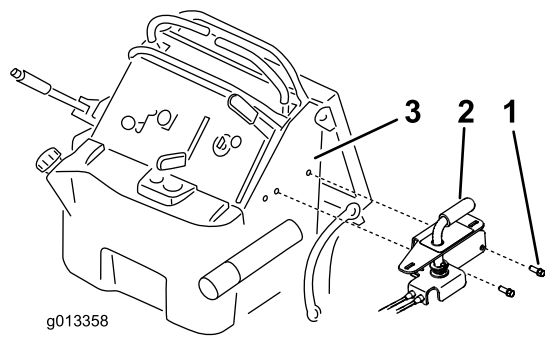
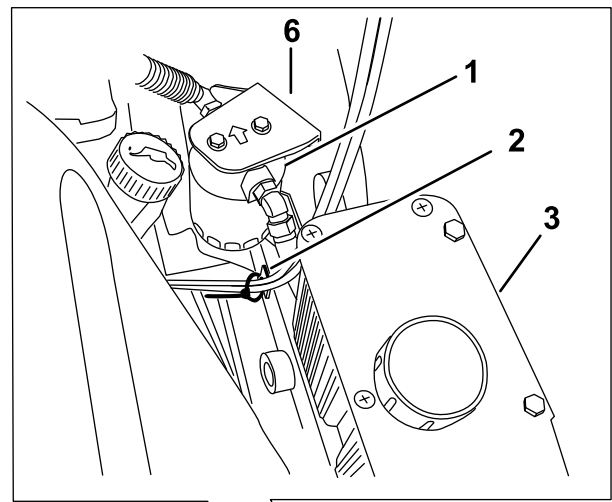


Figure 6

1. Bolt, (3/8 x 1 inch) (self tapping)
2. Handle assembly
3. Left side of machine tapping



2. Route the cables through the rectangular opening on the left side of the engine base and between the engine base and deck on the right side of the machine (Figure 7 and Figure 8).
3. Install an adhesive back plastic mount on the vertical part of the frame tube just in front of the hydraulic oil filter. See Figure 8. Thread the cable tie through the plastic mount and secure the cables with the cable tie.
4. Install an adhesive back plastic mount on the top of the mower deck on the right side so the cables do not contact the clutch or belt drive. See Figure 8. Thread the cable tie through the plastic mount and secure the cables with the cable tie.

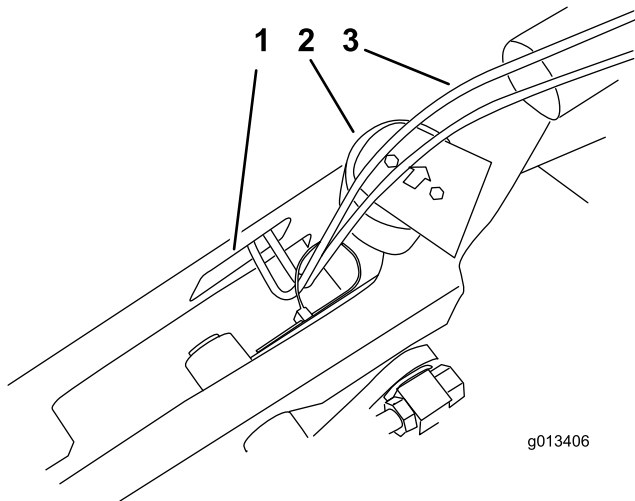


Figure 7

1. Rectangular opening on the left side of the engine base
2. Hydraulic oil filter
3. Cables

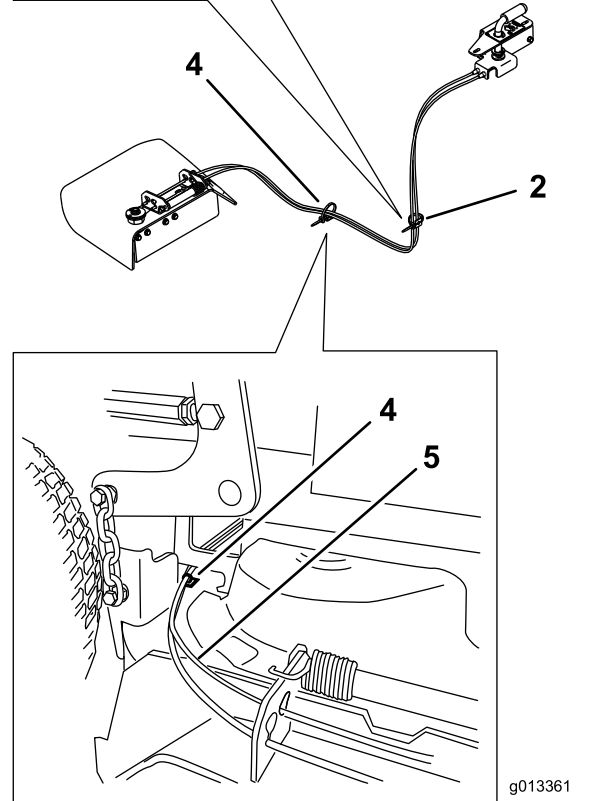


Figure 8

1. Hydraulic oil filter
2. Cable tie and plastic mount on side of frame
3. Hydraulic tank
4. Cable tie and plastic mount on top of mower deck on the right side
5. Cables
6. Left side of the machine

5. Remove the jam nuts from the thread ends of the cables (Figure 10).
6. Locate the cable that is attached to the outside of the handle assembly and install this cable into the outside hole in the side discharge chute (Figure 9).

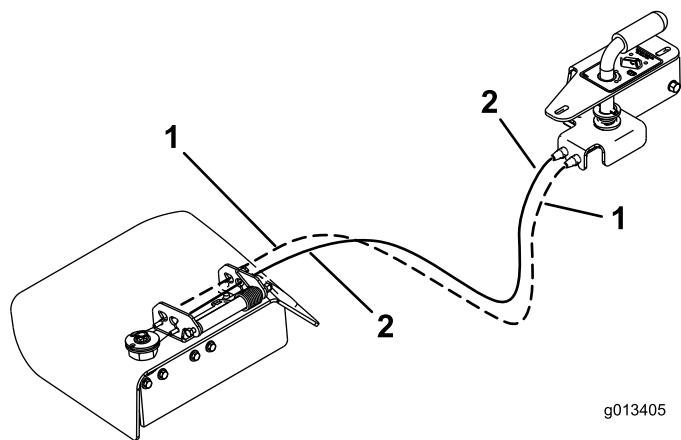


Figure 9

1. Outside cable installed into the outside hole in the side discharge chute
2. Inside cable installed into the inside hole in the side discharge chute

g013405

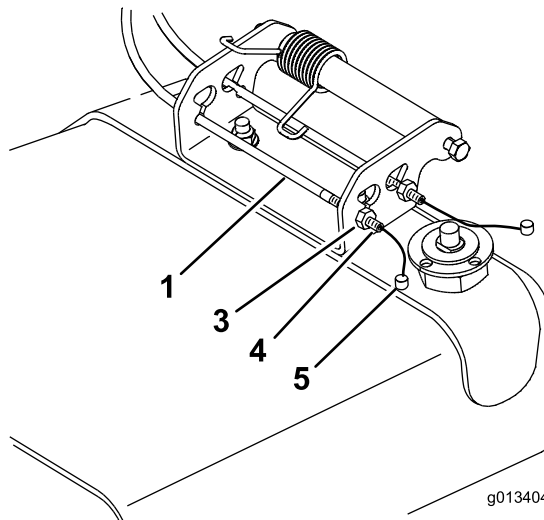
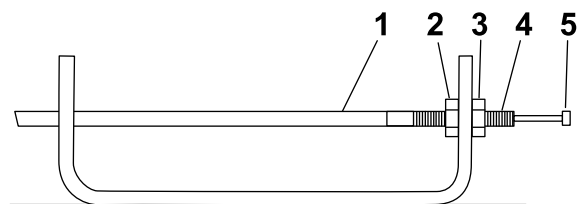


Figure 11

1. Outside cable
2. Jam nut threaded 1/2 onto cable end
3. Jam nut
4. Threaded end of the cable
5. Cable end barrel

g013404

7. Install the jam nuts and cable barrel end through the large hole (Figure 10).
8. Install the cable into the smallest diameter hole in the side discharge chute (Figure 10).

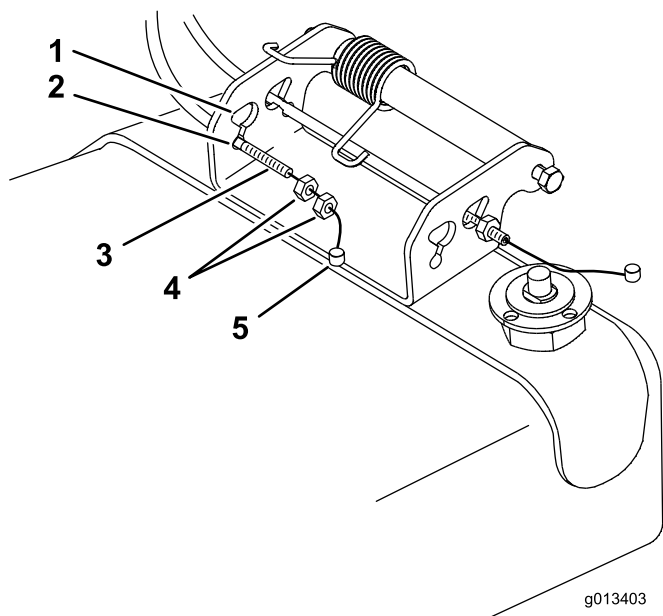


Figure 10

1. Large hole
2. Small hole
3. Threaded end of cable
4. Jam nuts
5. Cable end barrel

g013403

9. Install one jam nut onto the threaded end of the cable 1/2 way down the threads (Figure 11).
10. Install the cable through the smallest diameter hole in the side discharge chute and install the other jam nut to secure the cable (Figure 11).

11. While holding onto the gate assembly, remove the jam nut and discard (Figure 12).

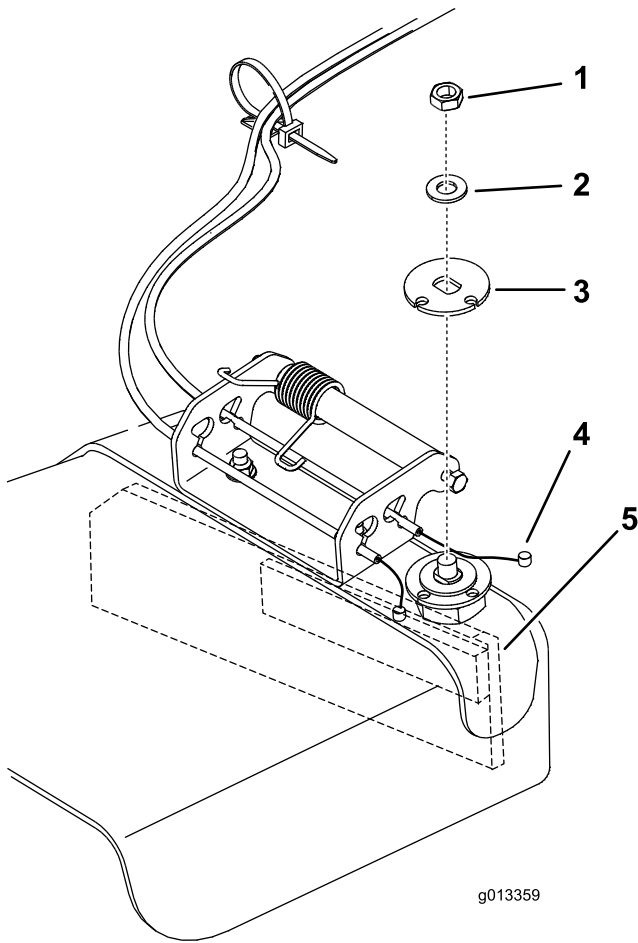


Figure 12

- | | |
|-------------------------------|---|
| 1. Remove jam nut and discard | 4. Cable end barrel |
| 2. Washer | 5. Hold gate while removing the jam nut |
| 3. Upper cable plate | |

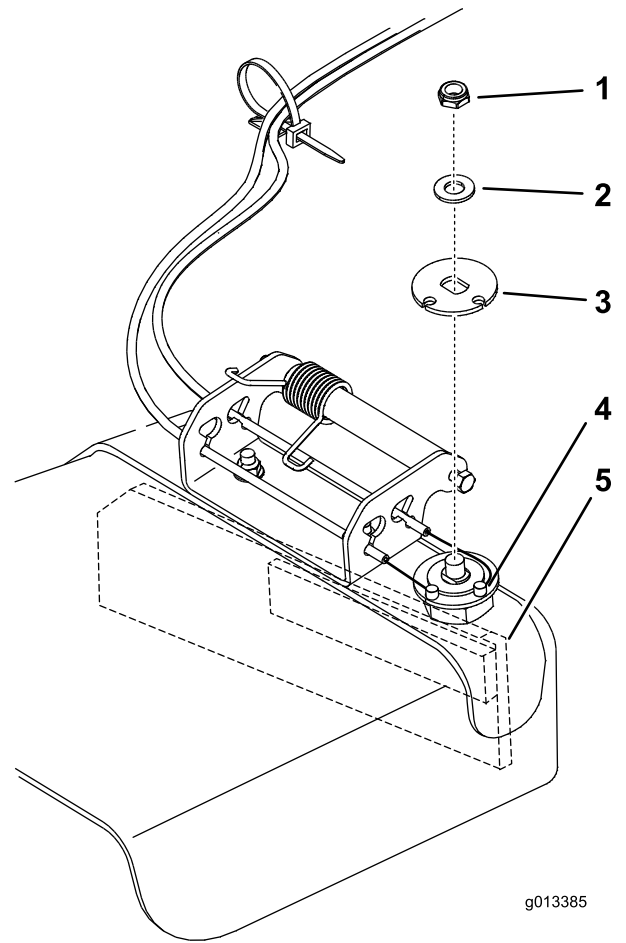


Figure 13

- | | |
|----------------------|---|
| 1. Lock nut | 4. Cable end barrels installed in lower cable plate |
| 2. Washer | 5. Hold gate while installing the lock nut (Make sure the cables are not pinched) |
| 3. Upper cable plate | |

12. Install the cable end barrels into the lower cable plate and secure them with the upper cable plate, a washer and locknut (Figure 13)

Note: Make sure the cables are not pinched before tightening the locknut.

5

Installing the Trash Bag

Parts needed for this procedure:

1	Trash bag
---	-----------

Procedure

Install the trash bag into the slots in the handle assembly (Figure 14).

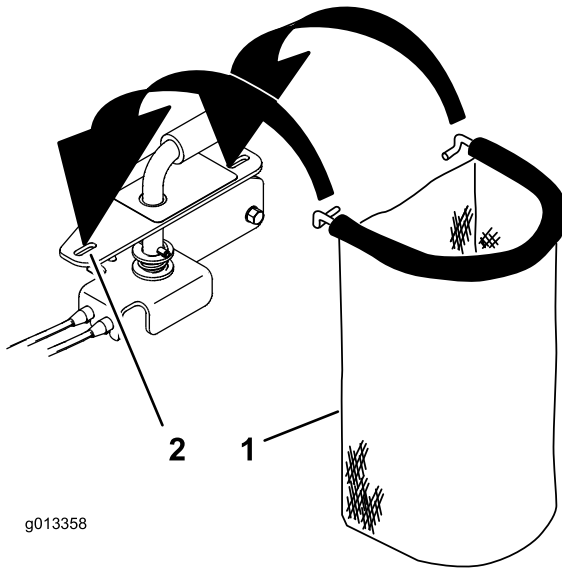


Figure 14

1. Trash bag

2. Slot in handle assembly

Operation

Using the Chute Gate

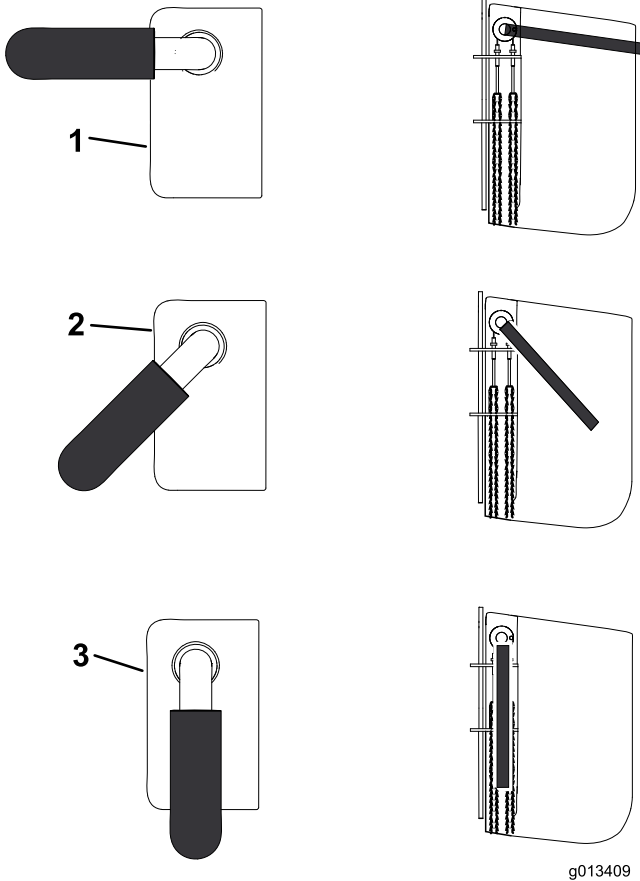
⚠ CAUTION

The chute gate does not seal the discharge opening. Grass and objects may be thrown in a bystander's direction and result in serious injury.

- Be aware of the mower discharge direction and do not point it at anyone.
- Remove obstacles such as rocks, tree limbs, etc. from the mowing area.
- Never put your hands or feet under the mower or discharge area.
- Never try to clear the discharge area or mower blades unless the engine is off and the key is removed.

Use the chute gate to temporarily stop or deflect grass clippings away from sidewalks, parking lots, patios, or anywhere you do not want grass clippings to land. The chute gate has 3 positions: open, 45 degree angle, and closed.

- Rotate the chute gate handle to the open position to allow grass clippings to discharge (FigureFigure 15).
- Rotate the chute gate handle to the 45 degree angle to deflect the grass clippings (FigureFigure 15).
- Rotate the chute gate handle to the closed position to stop the grass clippings (FigureFigure 15).

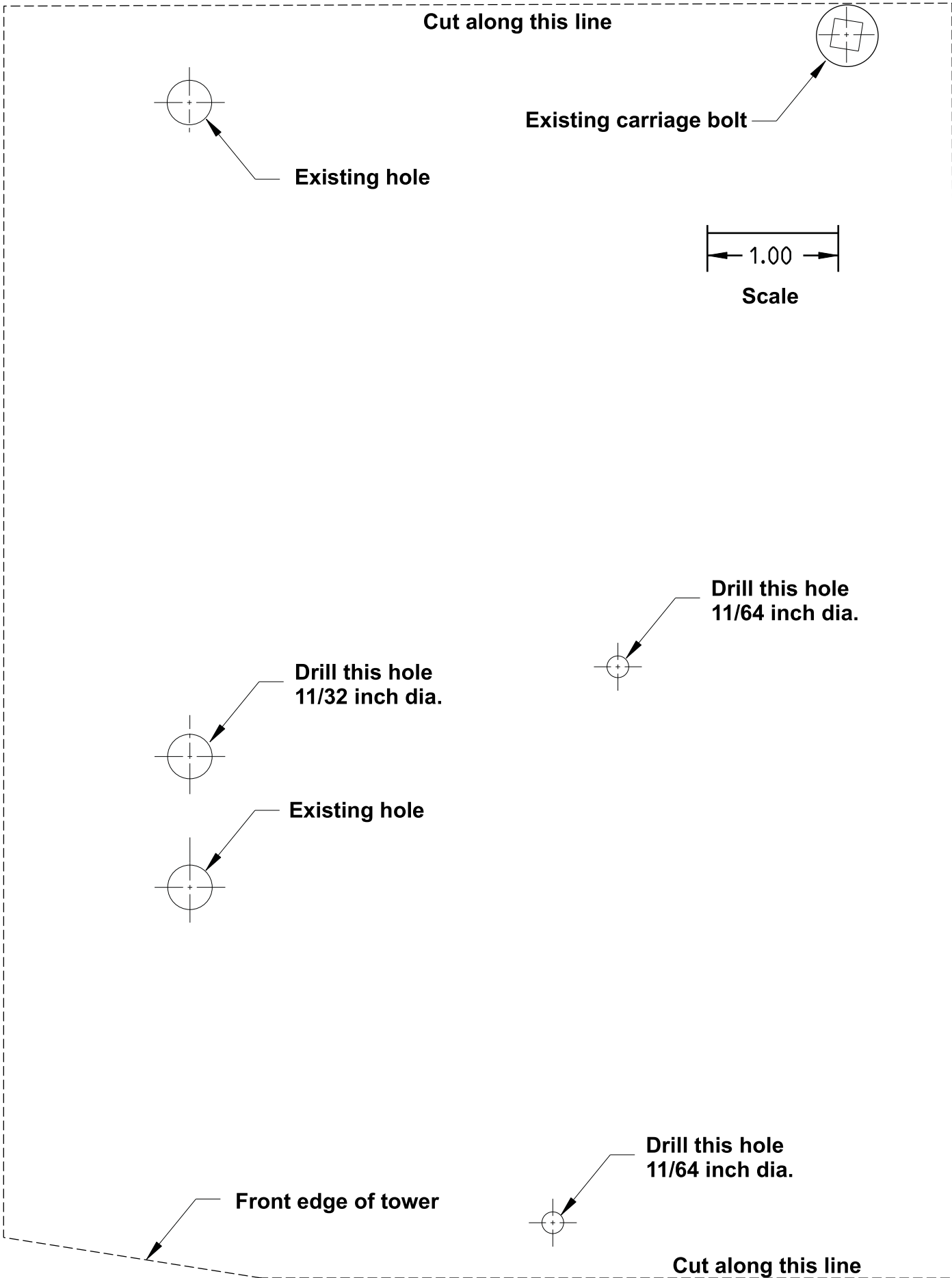


g013409

Figure 15

1. Chute gate open
2. Chute gate at 45 degree angle
3. Chute gate closed

Notes:



g013371



Count on it.